

Missouri Public Service Commission

Staff's Incident Report

APPENDIX B

FIGURES

Spire Missouri Inc.
(Formerly known as “Laclede Gas Company”)
and
Gateway Infrastructure, LLC

*Industry Analysis Division
Safety Engineering Department
Jefferson City, Missouri*

APPENDIX B

FIGURES

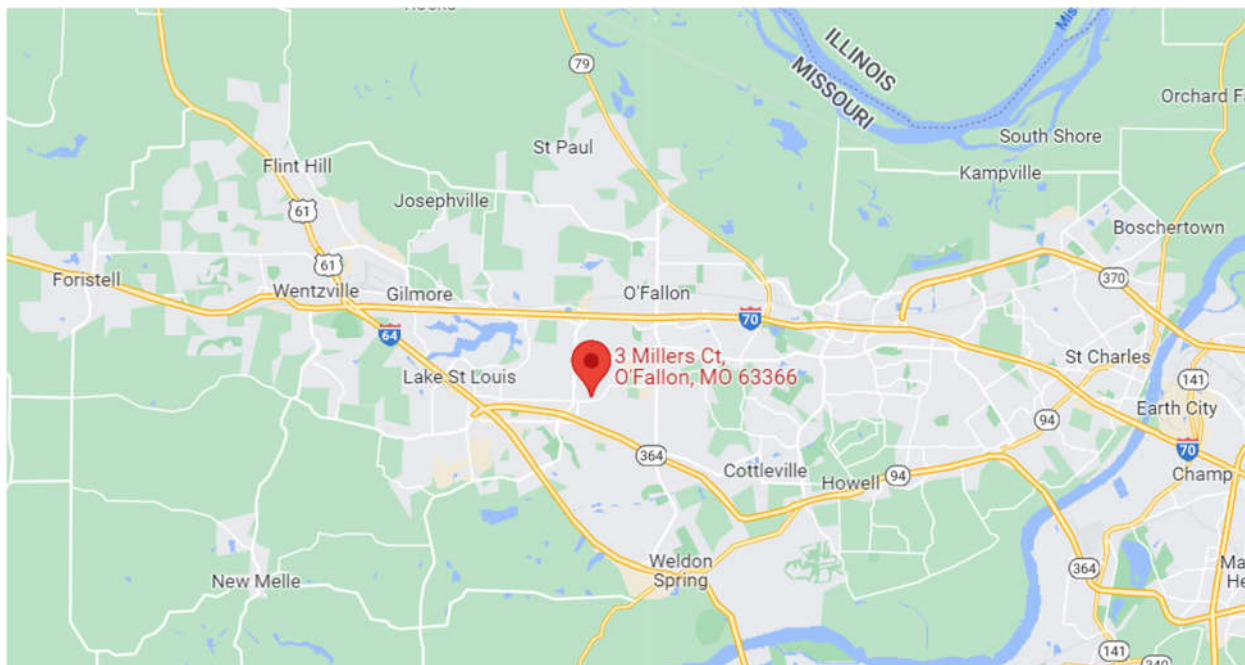


Figure 1: General Location of Incident (Source: Google Maps)

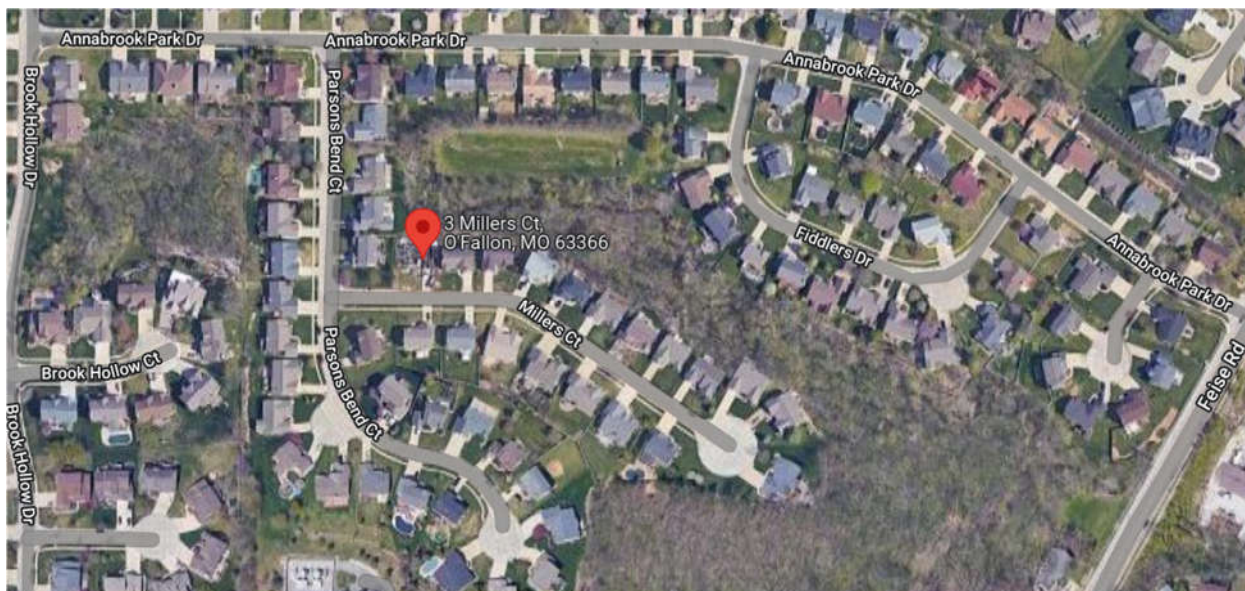
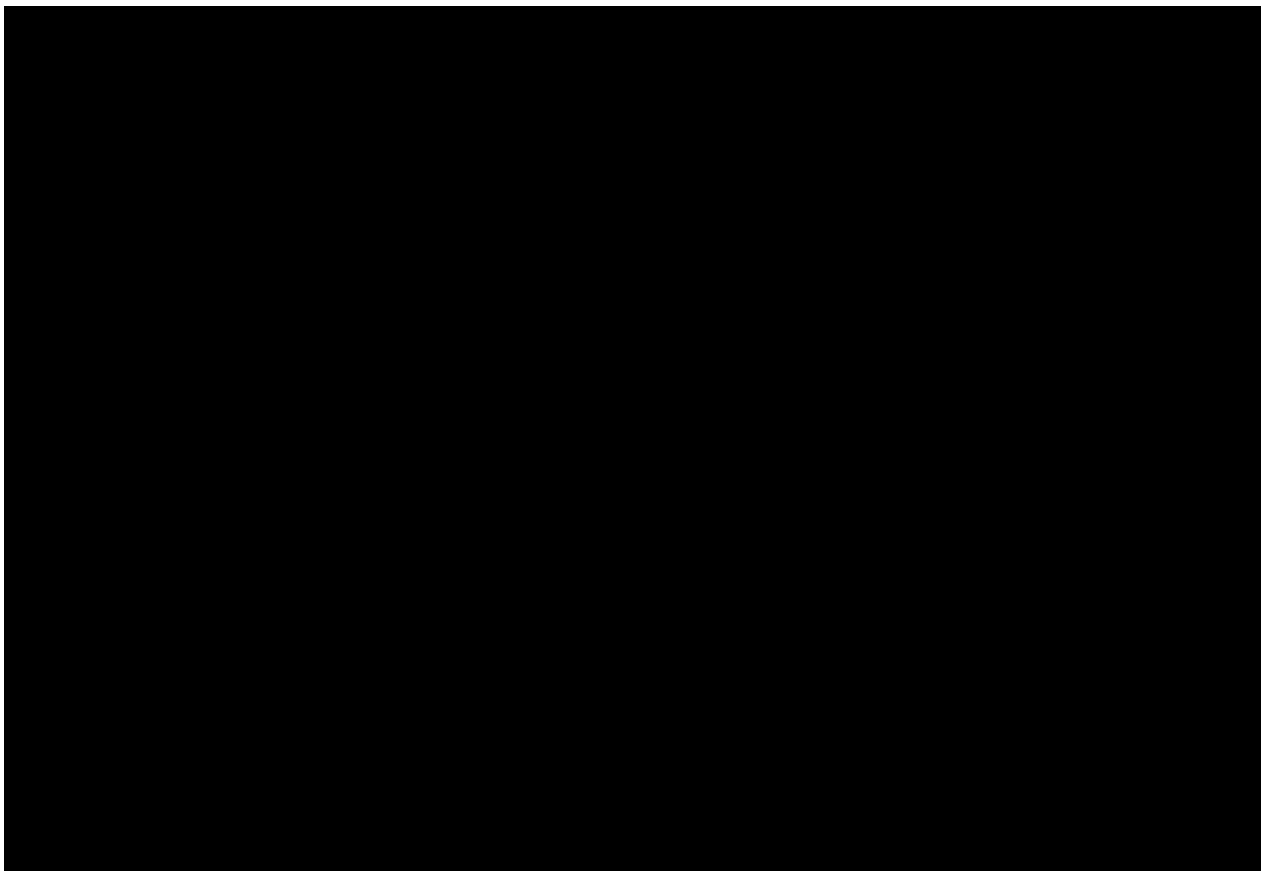


Figure 2: Location of 3 Millers Ct (Source: Google Maps)

**



**

Figure 3: Confidential Plan View of Natural Gas Mains and Service Pipelines (Source: Spire)



Figure 4: View of 3 Millers Ct. Driveway taken from Millers Ct on March 2, 2022, Following the Incident (Source: Staff Photograph)



Figure 5: West Side View of 3 Millers Ct. taken on March 2, 2022 following the Incident (Source: Staff Photograph)



*Figure 6: View of Damages to 5 Millers Ct. Residence on March 2, 2022 Following the Incident
(Source: Staff Photograph)*



Figure 7: View of Property Damage at 1528 Parsons Bend Court on March 2, 2022, Following the Incident (Source: Staff Photograph)