

P.S.C. MO No. 2  
Canceling P.S.C. MO No. 2

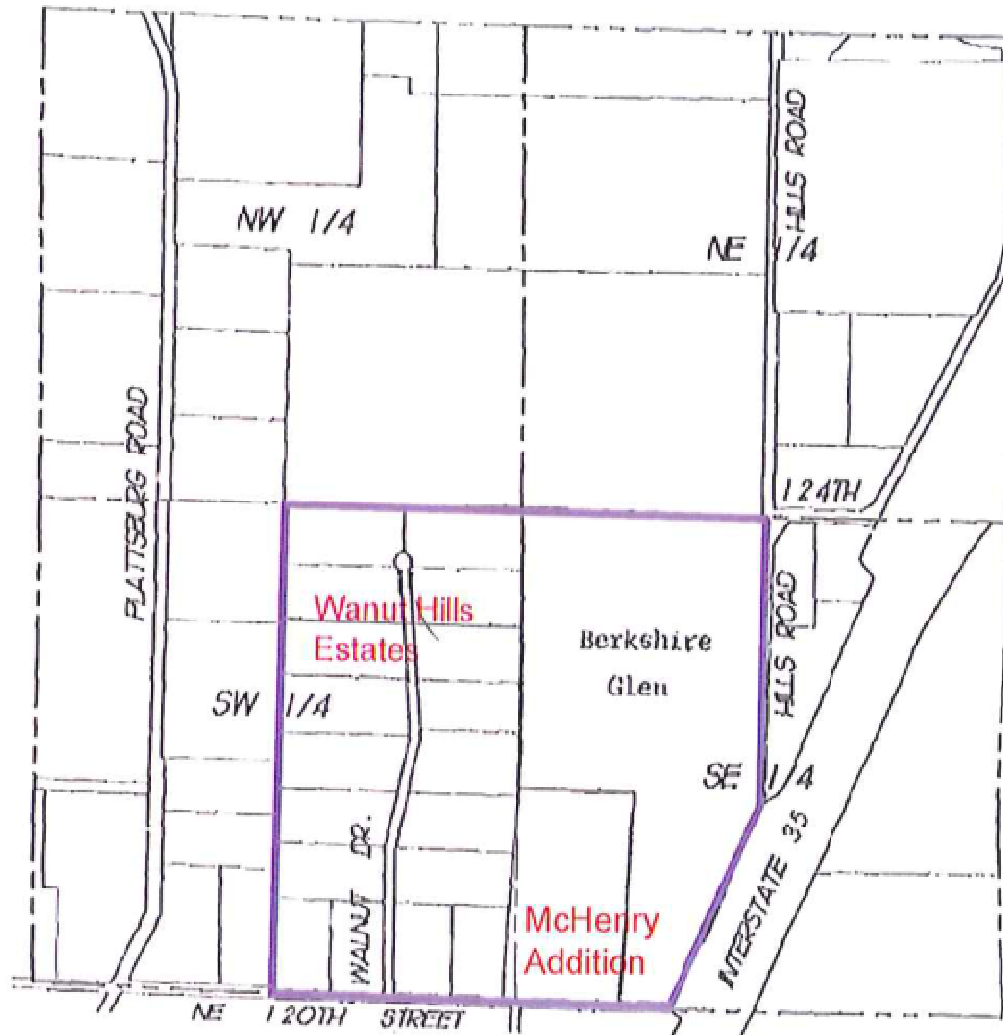
First Revised  
Original

Sheet No. 2  
Sheet No. 2

Name of Utility: Central Rivers Wastewater Utility, Inc.  
Service Area: Missouri Service Areas

**Map of Berkshire Glen/Walnut Hills Estates Service Area**

As modified in Case No. SA-2017-0013



Location Map  
SEC. 17-52-31

\*indicates new rate or text  
+indicates change

DATE OF ISSUE: September 29, 2016 DATE EFFECTIVE October 29, 2016

ISSUED BY: Mark Geisinger, President, P.O. Box 459, Kearney, MO 64060

P.S.C. MO No. 2  
Canceling P.S.C. MO No. 2

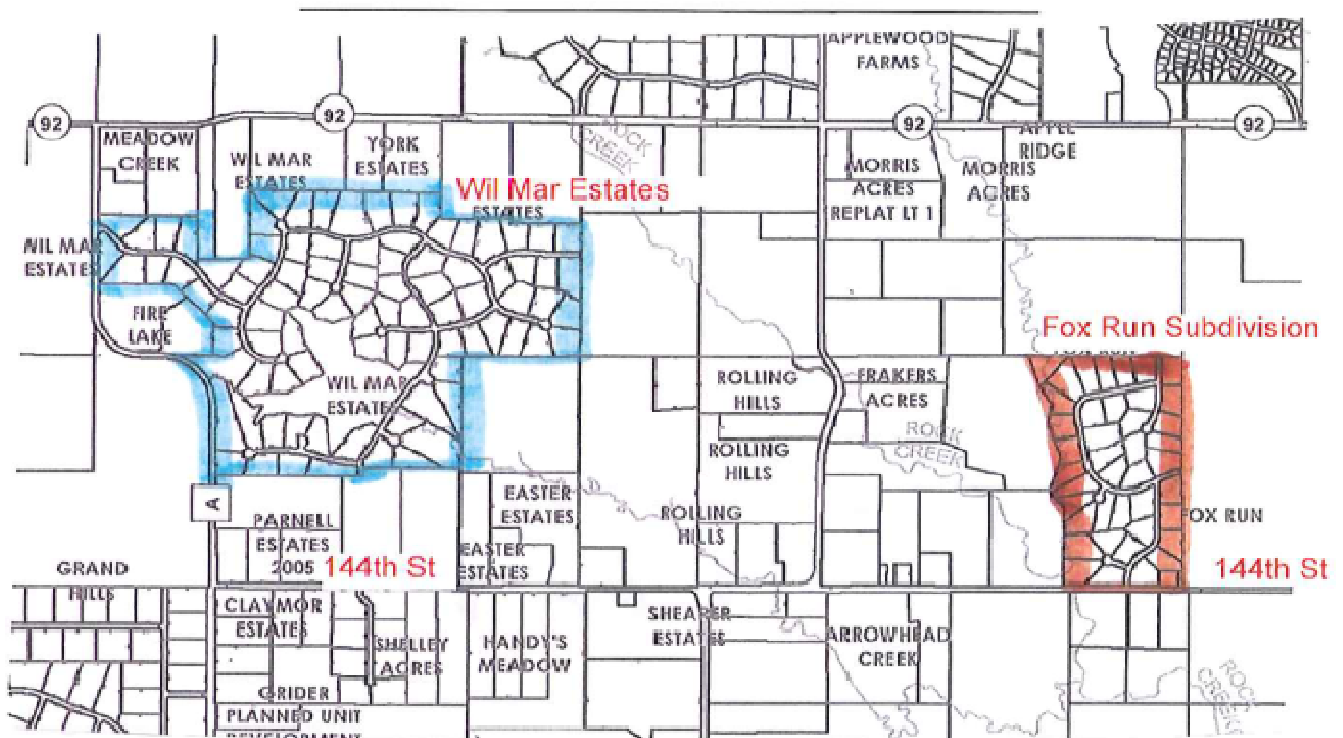
First Revised  
Original

Sheet No. 5  
Sheet No. 5

Name of Utility: Central Rivers Wastewater Utility, Inc.  
Service Area: Missouri Service Areas

### Map of Wil-Mar Estates and Fox Run Subdivision Service Areas

As modified in Case No. SA-2017-0013



\*indicates new rate or text  
+indicates change

DATE OF ISSUE: September 29, 2016 DATE EFFECTIVE October 29, 2016

ISSUED BY: Mark Geisinger, President, P.O. Box 459, Kearney, MO 64060

P.S.C. MO No. 2  
Canceling P.S.C. MO No. 2

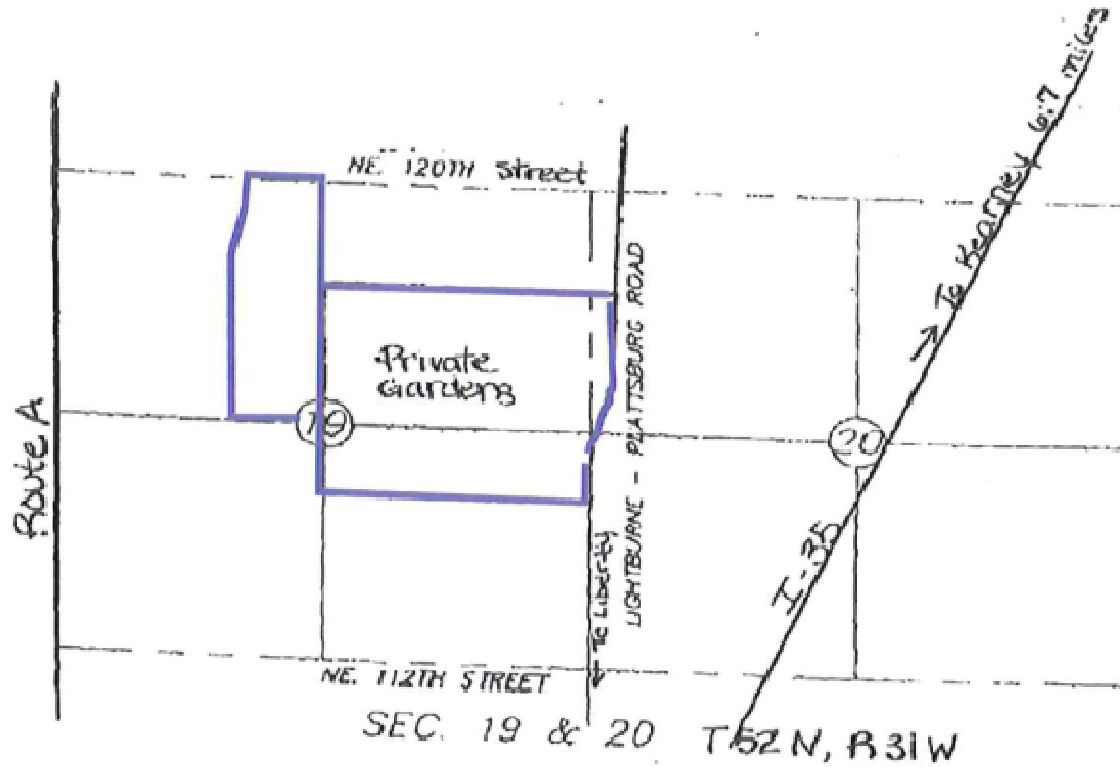
First Revised  
Original

Sheet No. 7  
Sheet No. 7

Name of Utility: Central Rivers Wastewater Utility, Inc.  
Service Area: Missouri Service Areas

### Map of Private Gardens Service Area

As modified in Case No. SA-2017-0013



\*indicates new rate or text  
+indicates change

DATE OF ISSUE: September 29, 2016 DATE EFFECTIVE October 29, 2016

ISSUED BY: Mark Geisinger, President, P.O. Box 459, Kearney, MO 64060