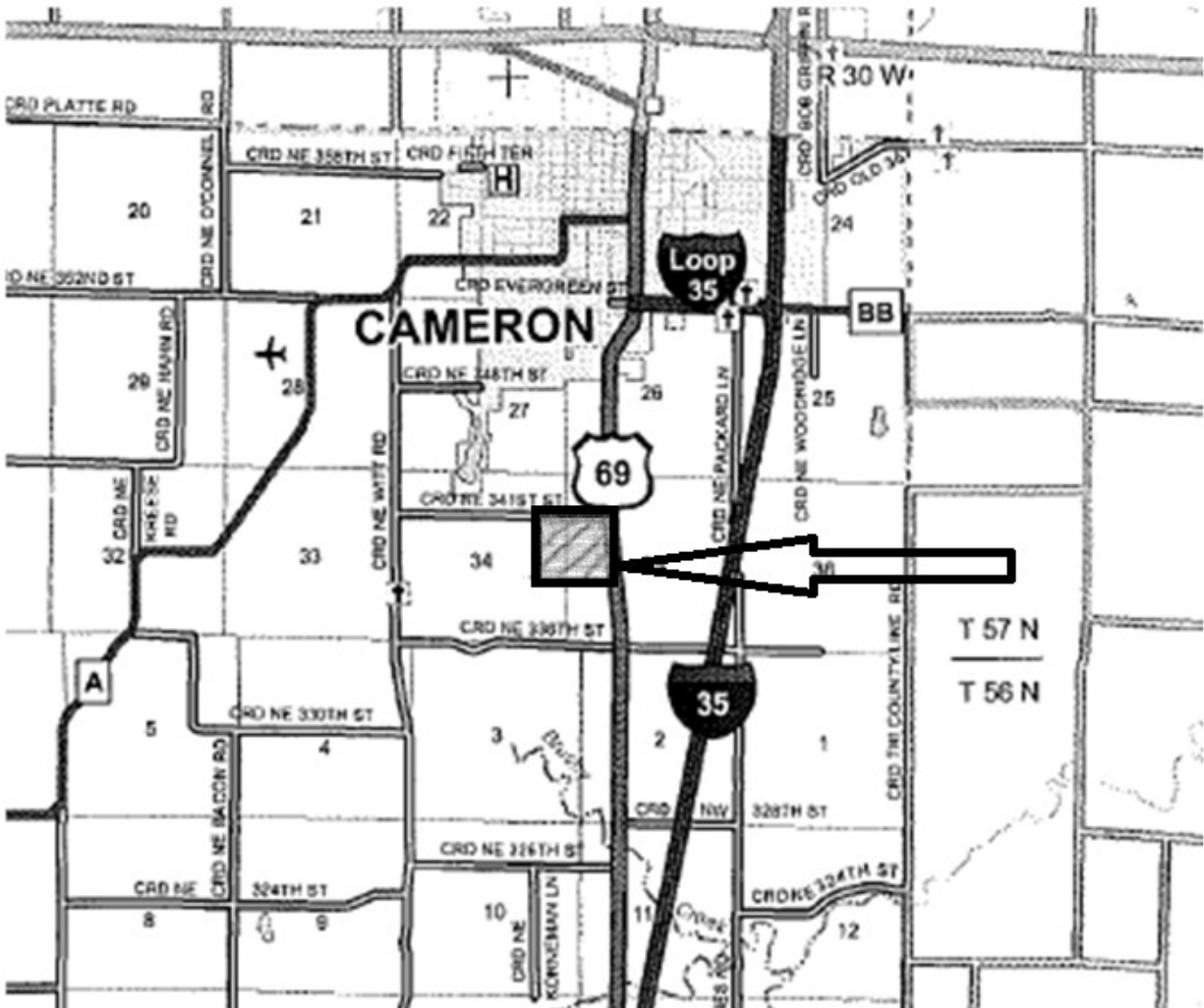


Name of Utility: **Central Rivers Wastewater Utility, Inc.**
For Service Areas in the State of Missouri

Rules Governing Rendering of **Sewer** Service

*

Map of Country Hills service area



*indicates new rate or text

+indicates change

DATE OF ISSUE: November 27, 2013

DATE EFFECTIVE: December 31, 2013

ISSUED BY: Mark Geisinger: President: P.O. Box 528, Kearney, MO 64060