

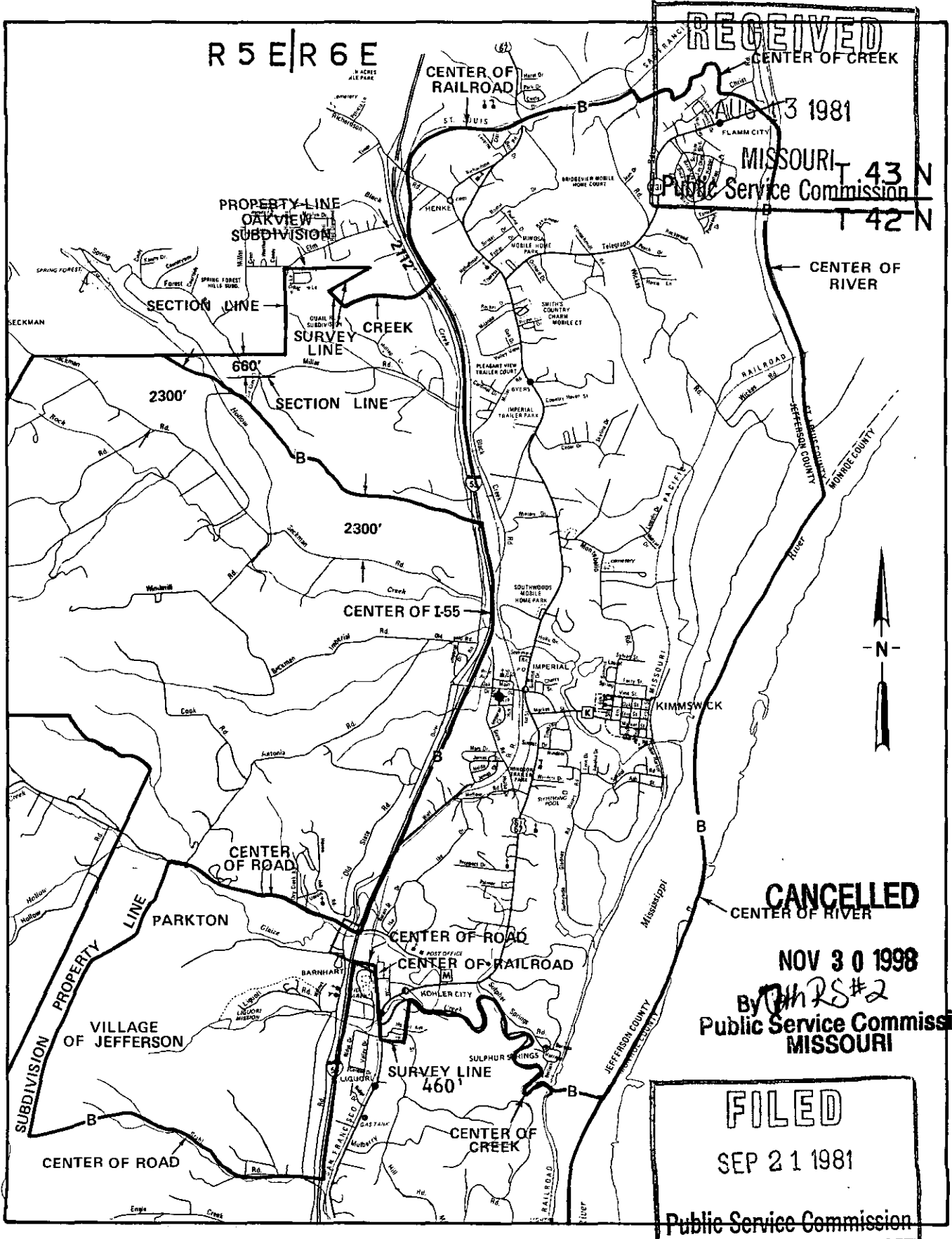
NO SUPPLEMENT TO THIS TARIFF WILL BE ISSUED EXCEPT FOR THE PURPOSE OF CANCELING THIS TARIFF.

P. S. C. Mo. No. 17

Imperial, Missouri

BASE RATE AREA MAP

6th REVISED SHEET 2 REPLACING 5th REVISED SHEET 2



RECEIVED
 CENTER OF CREEK
 AUG 13 1981
 MISSOURI T 43 N
 Public Service Commission T 42 N

CANCELLED
 CENTER OF RIVER

NOV 30 1998
 By *PHRS#2*
 Public Service Commission
 MISSOURI

FILED
 SEP 21 1981
 Public Service Commission

AUG 21 1981

By R. R. SHOCKLEY, Vice President, Missouri

SEP 21 1981

Issued: _____

Southwestern Bell Telephone
St. Louis, Missouri

Effective: _____

NO SUPPLEMENT TO THIS TARIFF WILL BE ISSUED EXCEPT FOR THE PURPOSE OF CANCELING THIS TARIFF.

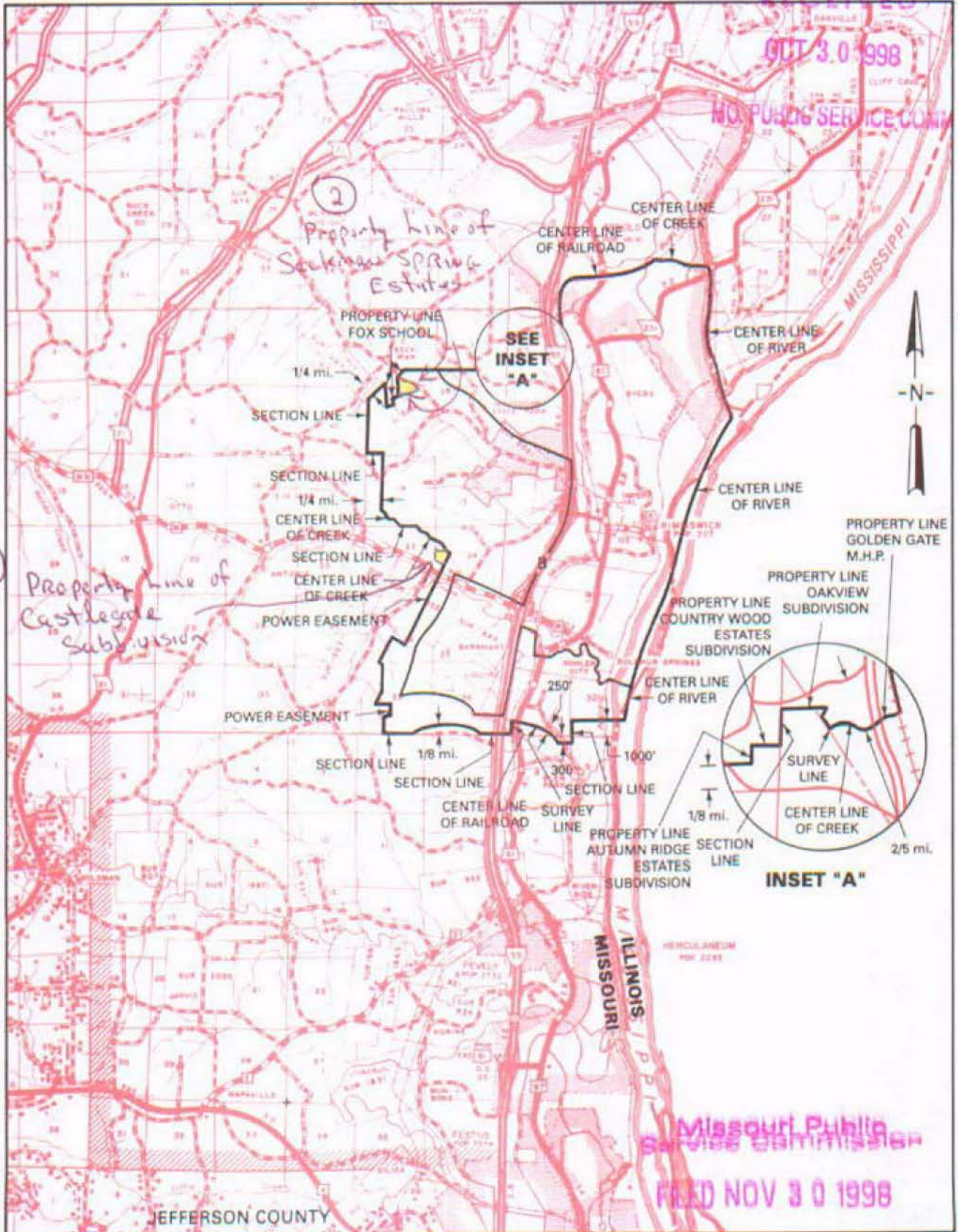
P. S. C. Mo. No. 17

Imperial, Missouri
Should be 6th Revised Sheet 3

REPLACING 4th REVISED SHEET 3
Replacing 5th Revised Sheet 3

EXCHANGE AREA MAP

RECEIVED
OCT 30 1998
MO. PUBLIC SERVICE COM.



Missouri Public Service Commission
FILED NOV 30 1998

Cancelled
December 17, 2008
Missouri Public
Service Commission
JI-2009-0374

Priscilla Hill-Ardoin

By HORACE WILKING, JR. President - Missouri
Southwestern Bell Telephone Company

NOV 30 1998

OCT 30 1998

Effective: September 15, 1996

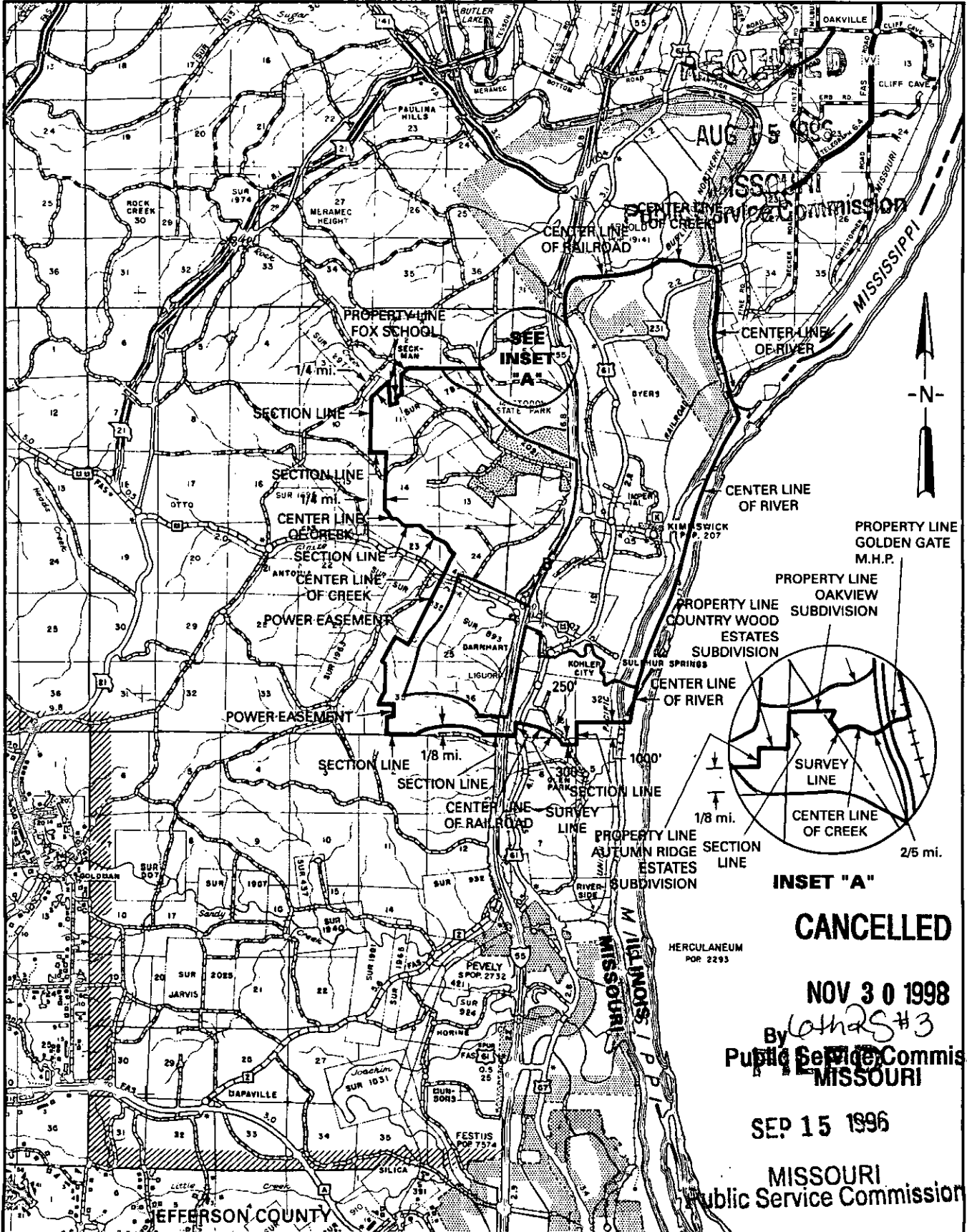
NO SUPPLEMENT TO THIS TARIFF WILL BE ISSUED EXCEPT FOR THE PURPOSE OF CANCELING THIS TARIFF.

P. S. C. Mo. No. 17

Imperial, Missouri

5th REVISED SHEET 3
REPLACING 4th REVISED SHEET 3

EXCHANGE AREA MAP



R4E | R5E

R5E | R6E

By HORACE WILKINS, JR. President - Missouri
Southwestern Bell Telephone Company
St. Louis, Missouri

Issued: August 15, 1996

Effective: September 15, 1996

CANCELLED

NOV 30 1998

By *W. S. #3*
Public Service Commission
MISSOURI

SEP 15 1996

MISSOURI
Public Service Commission

T41N
T40N

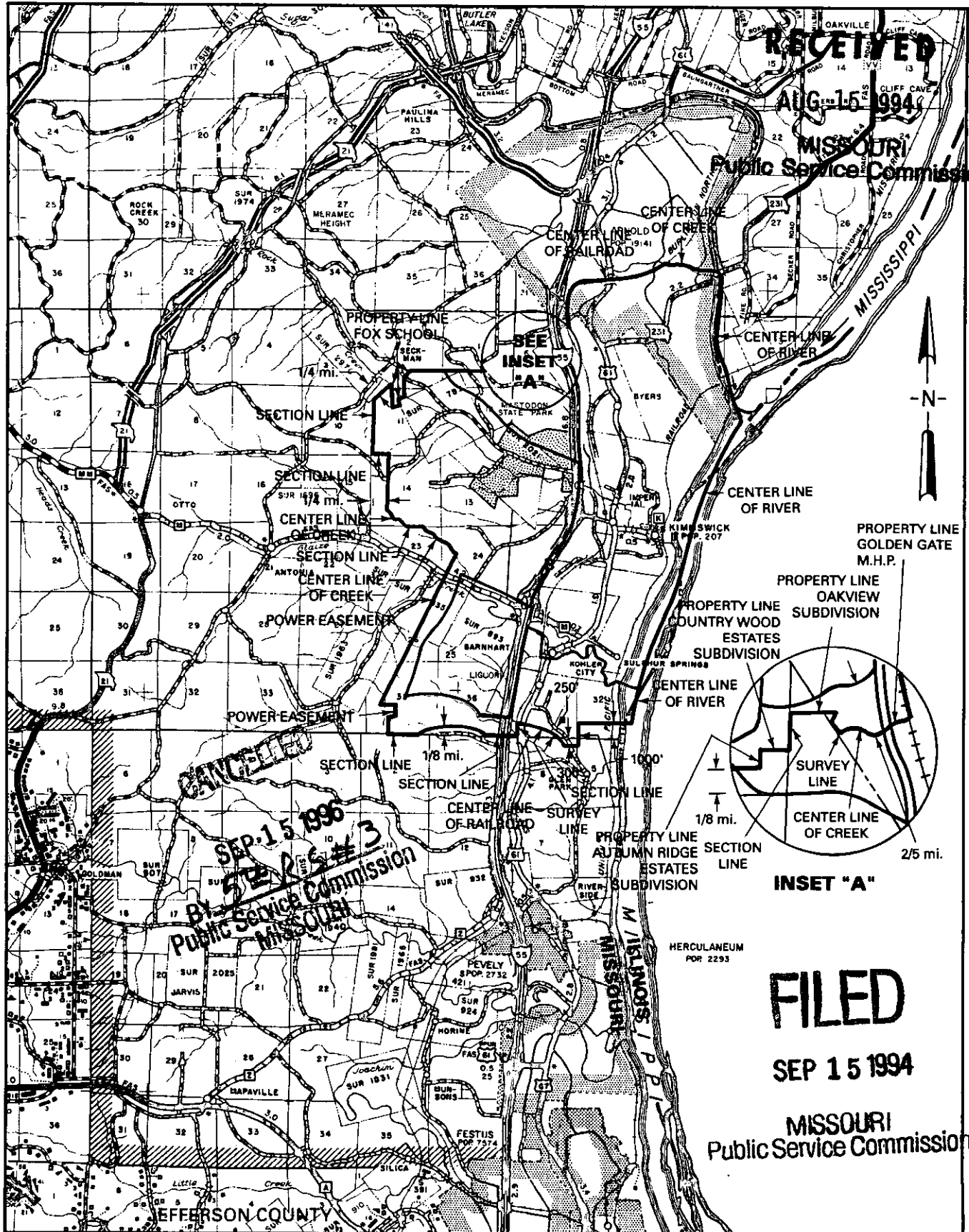
NO SUPPLEMENT TO THIS TARIFF WILL
BE ISSUED EXCEPT FOR THE PURPOSE OF
CANCELING THIS TARIFF.

P. S. C. Mo. No. 17

Imperial, Missouri

4th REVISED SHEET 3
REPLACING 3rd REVISED SHEET 3

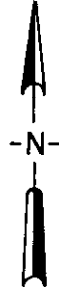
EXCHANGE AREA MAP



RECEIVED
AUG 15 1994

MISSOURI
Public Service Commission

T43N
T42N

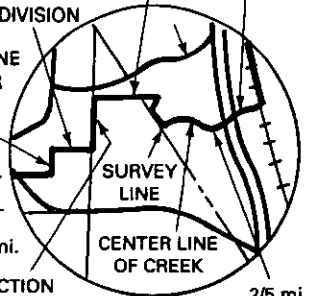


PROPERTY LINE
GOLDEN GATE
M.H.P.

PROPERTY LINE
OAKVIEW
SUBDIVISION

PROPERTY LINE
COUNTRY WOOD
ESTATES
SUBDIVISION

PROPERTY LINE
AUTUMN RIDGE
ESTATES
SUBDIVISION



T42N
T41N

INSET "A"

FILED

SEP 15 1994

MISSOURI
Public Service Commission

T41N
T40N

R4E | R5E

R5E | R6E

By M. H. SCHULTEIS, Executive Director - External Affairs
Southwestern Bell Telephone Company
St. Louis, Missouri

Issued: August 15, 1994

Effective: September 15, 1994

No supplement to this tariff will be issued except for the purpose of canceling this tariff.

MISSOURI PORTION-HAMBURG
IOWA, EXCHANGE
21st Revised Sheet 1
Replacing 20th Revised Sheet 1

SOUTHWESTERN BELL TELEPHONE COMPANY
LOCAL EXCHANGE TARIFF

Missouri Public
Service Commission

RECD NOV 12 1998

(RT)

Missouri Public
Service Commission

FILED DEC 30 1998

(RT)

Issued: NOV 13 1998

Effective: 

DEC 30 1998

CANCELLED
May 1, 2014
Missouri Public
Service Commission
JL-2014-0379

By PRISCILLA HILL-ARDOIN, President-Missouri
Southwestern Bell Telephone Company
St. Louis, Missouri

No supplement to this tariff will be issued except for the purpose of canceling this tariff.

MISSOURI PORTION-HAMBURG, IOWA, EXCHANGE
 20th Revised Sheet 1
 Replacing 19th Revised Sheet 1

RECEIVED

SOUTHWESTERN BELL TELEPHONE COMPANY
 LOCAL EXCHANGE TARIFF

JAN 17 1995

1.1 GENERAL

This Tariff is governed, except as otherwise specified herein, by all General Tariffs of the Southwestern Bell Telephone Company on file in the State of Missouri, which are hereby made a part of this Tariff. Unless otherwise specified, the charges quoted in this Tariff or in any other Missouri Tariff are for periods of one month, are payable monthly in advance and entitle the customer to Exchange Telephone Service within the Hamburg Exchange Area.

MO. PUBLIC SERVICE COMM.

This exchange area includes, in addition to the Missouri portion, certain territory in the State of Iowa comprising the cities of Hamburg, Riverton and vicinities, as shown on the Exchange Area Map for this exchange.

1.2 RATES

CANCELLED

1.2.1 Within the Missouri portion of the exchange area:

1. Monthly Rates

DEC 30 1998
 By *2154RS #1*
 Public Service Commission
 MISSOURI

	<u>Monthly Rate</u>	<u>Allowance</u>
Business		
One-Party Flat (CR)	\$23.70	N/A
Option 1 (Measured) ↓	17.15	0
Option 2 (Measured) (CR)	22.70	6 Hrs
Residence		
One-Party Flat	11.45	N/A
Basic (Measured)	7.50	0
Budget (Measured)	9.25	\$3.00

(RT)
 (RT)

a. The following exchange usage rates apply in addition to the Residence Measured Service Line rates:

<u>Call Area</u>	<u>Distance in Miles</u>	<u>Dial Station-to-Station</u>	
		<u>Initial Minute Rate</u>	<u>Each Additional Minute Rate</u>
A	0-10	\$.05	\$.01
B	11-15	.07	.013
C	16-20	.09	.015
D	Over 20	.11	.017

b. Business exchange usage rates - \$.03 per minute.

FILED

Issued: **JAN 17 1995**

Effective: **FEB 17 1995**

FEB 17 1995

By HORACE WILKINS, JR., President-Missouri
 Southwestern Bell Telephone Company
 St. Louis, Missouri

MISSOURI
 Public Service Commission

No supplement to this tariff will be issued except for the purpose of canceling this tariff.

MISSOURI PORTION-HAMBURG, IOWA, EXCHANGE
19th Revised Sheet 1
Replacing 18th Revised Sheet 1

SOUTHWESTERN BELL TELEPHONE COMPANY
LOCAL EXCHANGE TARIFF

RECEIVED

1.1 GENERAL

This Tariff is governed, except as otherwise specified herein by all other Tariffs of the Southwestern Bell Telephone Company on file in the State of Missouri, which are hereby made a part of this Tariff. ^{OCT 25 1993} ^{MISSOURI Public Service Commission} Otherwise specified, the charges quoted in this Tariff or in any other Missouri Tariff are for periods of one month, are payable monthly in advance and entitle the customer to Exchange Telephone Service within the Hamburg Exchange Area.

This exchange area includes, in addition to the Missouri portion, certain territory in the State of Iowa comprising the cities of Hamburg, Riverton and vicinities, as shown on the Exchange Area Map for this exchange.

1.2 RATES

CANCELLED

1.2.1 Within the Missouri portion of the exchange area:

1. Monthly Rates

FEB 17 1995
BY 204 R.S. #1
MISSOURI Public Service Commission

Monthly Rate

(AT)	Business			
(CT)	One-Party Flat	\$28.95		N/A
(AT)	Option 1 (Measured)	(NR) 21.00		0
(AT)	Option 2 (Measured)	(NR) 27.75		6 Hrs
(MT)	Public Access Line	28.95		0
(MT)	Public Carrier Access Line	23.00		0
(AT)	Residence			
(CT)	One-Party Flat	11.45		N/A
(RT)				
(AT)	Basic (Measured)	(NR) 7.50		0
(AT)	Budget (Measured)	(NR) 9.25	(AT)(NR) \$3.00	

(AT) a. The following exchange usage rates apply in addition to the Residence Measured Service Line rates:

Call Area	Distance in Miles	Dial Station-to-Station	
		Initial Minute Rate	Each Additional Minute Rate
A	0-10	(NR) \$.05	(NR) \$.01
B	11-15	.07	.013
C	16-20	.09	.015
D	Over 20	(NR) .11	(NR) .017

(AT)(NR) b. Business exchange usage rates - \$.03 per minute

FILED
NOV 26 1993

Issued: **OCT 26 1993**

Effective: **NOV 26 1993**

MISSOURI

By M. H. SCHULTEIS, Division Manager-Regulatory & Industry Relations
Southwestern Bell Telephone Company
St. Louis, Missouri

Public Service Commission

No supplement to this tariff will be issued except for the purpose of canceling this tariff.

MISSOURI PORTION-HAMBURG
IOWA, EXCHANGE
1st Revised Sheet 1.01
Replacing Original Sheet 1.01

SOUTHWESTERN BELL TELEPHONE COMPANY
LOCAL EXCHANGE TARIFF

Missouri Public
Service Commission

REC'D NOV 12 1998

(RT)

(RT)

Missouri Public
Service Commission

FILED DEC 30 1998

Issued: NOV 13 1998

Effective:

DEC 30 1998

CANCELLED
May 1, 2014
Missouri Public
Service Commission
JL-2014-0379

By PRISCILLA HILL-ARDOIN, President-Missouri
Southwestern Bell Telephone Company
St. Louis, Missouri

No supplement to this tariff will be issued except for the purpose of canceling this tariff.

MISSOURI PORTION-HAMBURG,
IOWA, EXCHANGE
Original Sheet 1.01

SOUTHWESTERN BELL TELEPHONE COMPANY
LOCAL EXCHANGE TARIFF

RECEIVED

1.2 RATES (Continued)

OCT 25 1993

(MT)

2. Coin Rates

MISSOURI
Public Service Commission

(MT)

Local messages originating at semi-public and public telephones are charged at \$.35 each.

(RT)

CANCELLED

DEC 30 1998
By *LSRS#1.01*
Public Service Commission
MISSOURI

FILED

NOV 26 1993

MISSOURI
Public Service Commission

Issued:

OCT 26 1993

Effective:

NOV 26 1993

By M. H. SCHULTEIS, Division Manager-Regulatory & Industry Relations
Southwestern Bell Telephone Company
St. Louis, Missouri