

SBC PSC MO #17
Fayette, Missouri
1st Revised Sheet 2
Replacing Original Sheet 2

Non-Scannable Map

(Is viewable in the Data Center
200 Madison Street, 1st Floor
Jefferson City MO)

NO SUPPLEMENT TO THIS TARIFF WILL BE ISSUED EXCEPT FOR THE PURPOSE OF CANCELING THIS TARIFF.

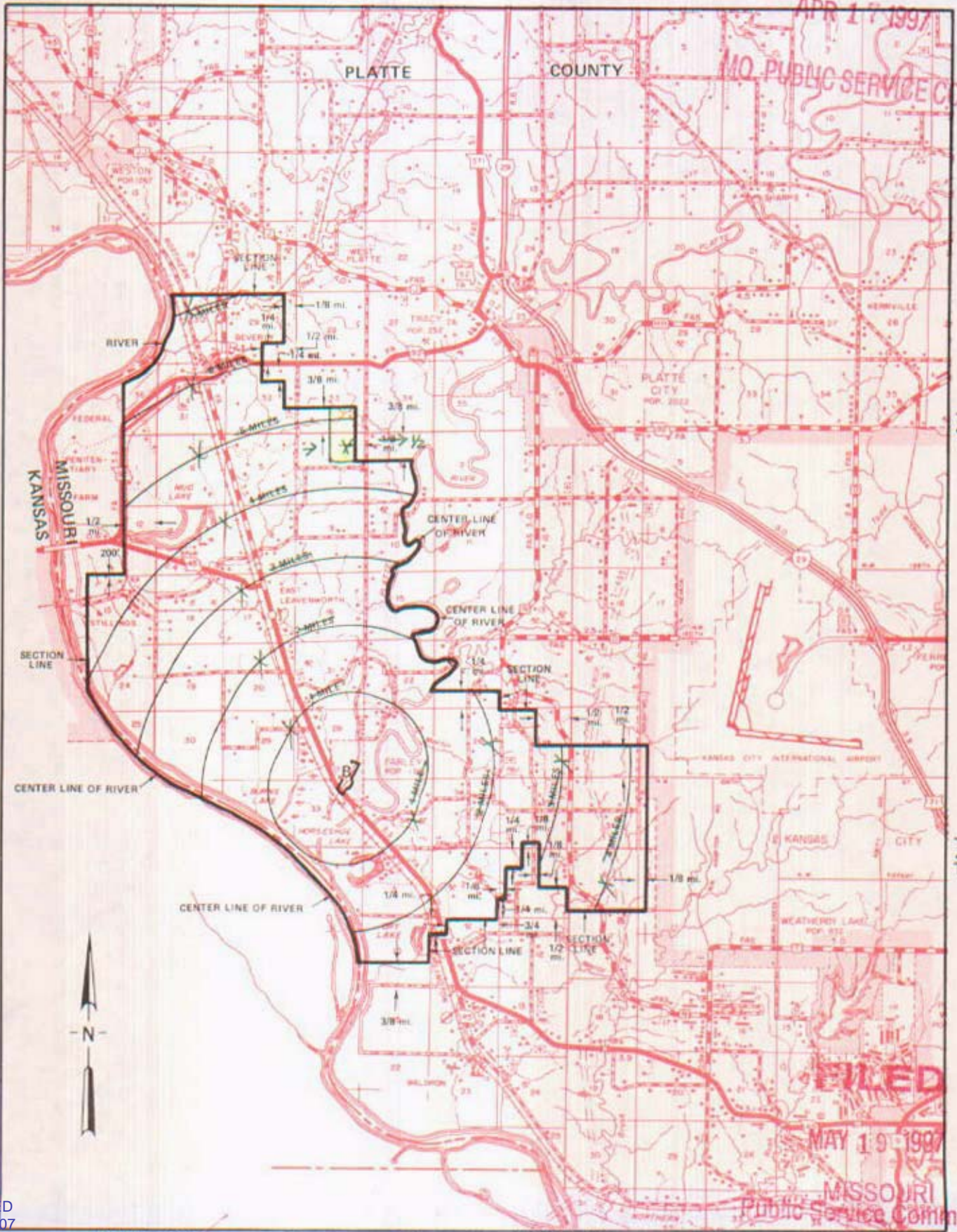
P. S. C. Mo. No. 17
EXCHANGE AREA MAP

7 Farley, Missouri
REPLACING 6th REVISED SHEET 3
4th REVISED SHEET 3

RECEIVED
6

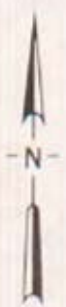
APR 17 1997

MO. PUBLIC SERVICE COMMISSION



T53N
T52N

T52N
T51N



FILED

MAY 19 1997

MISSOURI Public Service Commission

CANCELLED
June 29, 2007
TO-2002-185
Missouri Public
Service Commission

R36W | R35W
APR 16 1997

By *Karen Jennings*, R35W | R34W
By R. R. SHOCKLEY, Vice President, Missouri
Southwestern Bell Telephone Company
St. Louis, Missouri

MAY 19 1997

Effective: JUL 02 1997

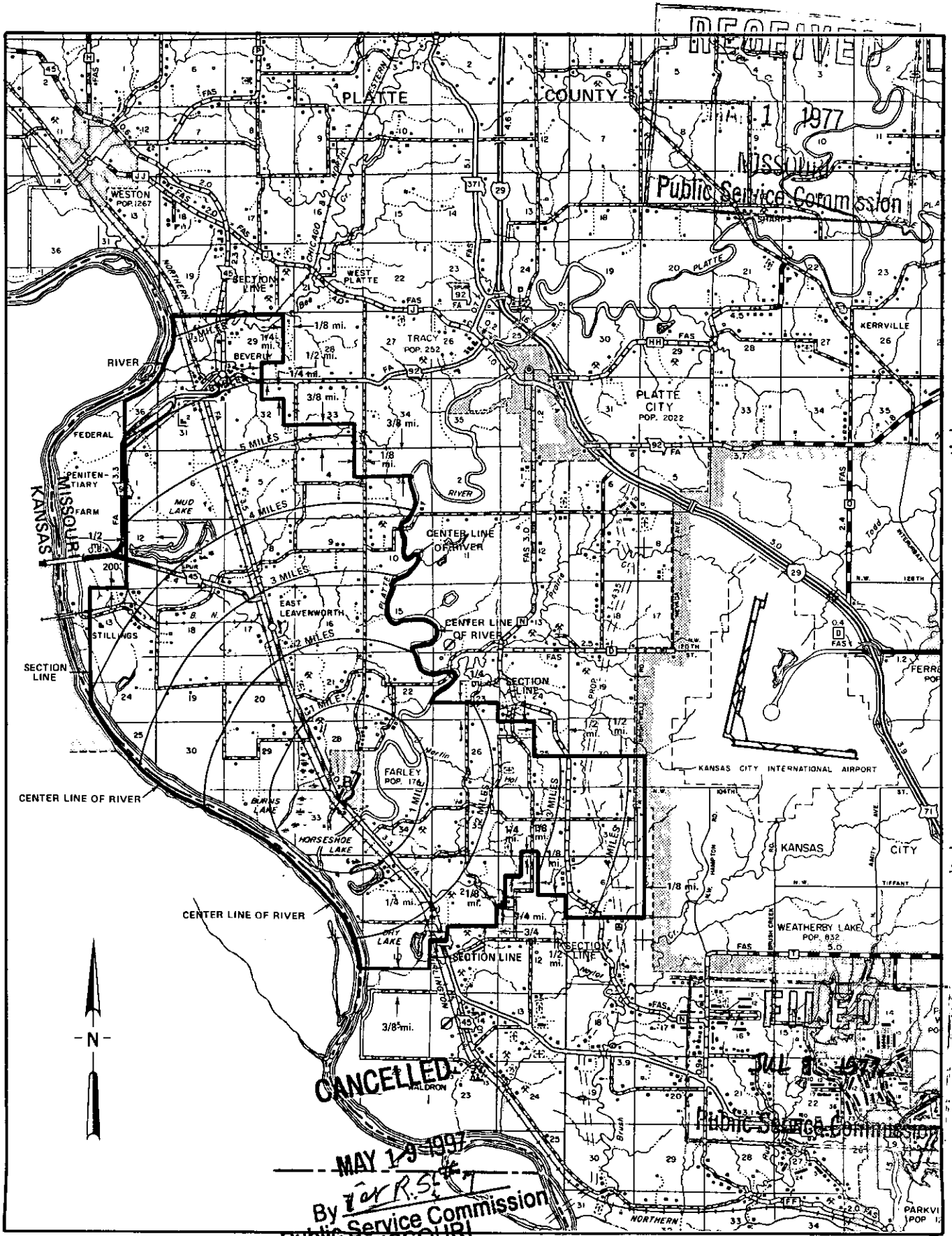
Issued: March 1, 1972

NO SUPPLEMENT TO THIS TARIFF WILL BE ISSUED EXCEPT FOR THE PURPOSE OF CANCELING THIS TARIFF.

P. S. C. Mo. No. 17
EXCHANGE AREA MAP

Farley, Missouri

6th REVISED SHEET 3
REPLACING 5th REVISED SHEET 3



T53N
T52N

T52N
T51N

R36W | R35W

R35W | R34W

By R. R. SHOCKLEY, Vice President, Missouri
Southwestern Bell Telephone Company
St. Louis, Missouri

Issued: March 1, 1977

Effective: JUL 8 1977

NO SUPPLEMENT TO THIS TARIFF WILL BE ISSUED EXCEPT FOR THE PURPOSE OF CANCELING THIS TARIFF.

Farley, Missouri

ORIGINAL SHEET 2

REPLACING FARLEY TELEPHONE COMPANY

P. S. C. Mo. No. 2

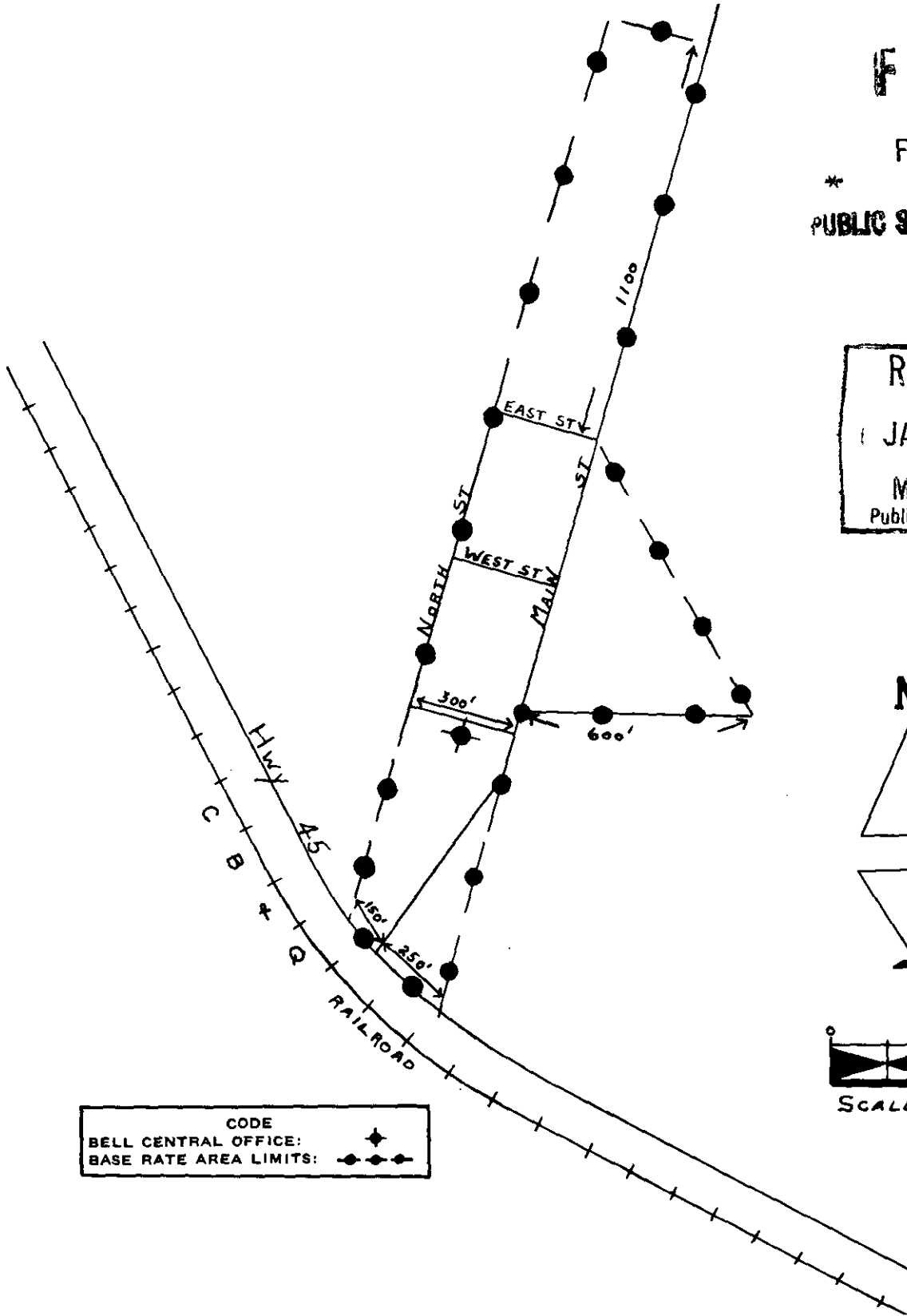
P. S. C. Mo. No. 17 BASE RATE AREA MAP

FILED

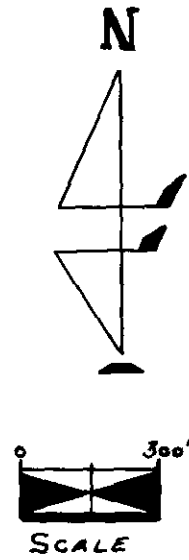
FEB-1-1955

*
PUBLIC SERVICE COMMISSION

RECEIVED
JAN 25 1955
MISSOURI
Public Service Comm.



CODE	
BELL CENTRAL OFFICE:	◆
BASE RATE AREA LIMITS:	- - - ◆ - - -



* Issued under Order of the Public Service Commission in Case No. 12805.

Issued: January 27, 1955

Effective: February 1, 1955

By J. R. PETERSON, General Manager
Southwestern Bell Telephone Company
St. Louis, Missouri

CANCELLED
June 29, 2007
TO-2002-185
Missouri Public
Service Commission

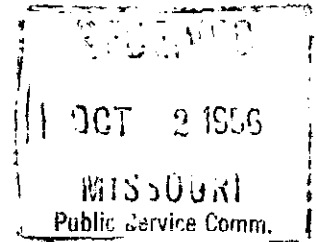
FARLEY Mo

NO SUPPLEMENT TO THIS TARIFF WILL
BE ISSUED EXCEPT FOR THE PURPOSE
OF CANCELING THIS TARIFF.

P. S. C. Mo.-No. 17

FARLEY, MISSOURI
1ST REVISED SHEET 4
(CANCELING ORIGINAL SHEET 4)

This sheet is canceled. For local and general exchange rates applicable to Farley, please refer to the Local Exchange Tariff Sheet 1 and 1-B, and the General Exchange Tariff.



NOV 4 1956

MISSOURI PUBLIC SERVICE COMMISSION

Issued: October 4, 1956

Effective: November 4, 1956

By J. R. PETERSON, General Manager
Southwestern Bell Telephone Co.
St. Louis, Missouri

CANCELLED
June 29, 2007
TO-2002-185
Missouri Public
Service Commission

SBC PSC MO #17
Farmington, Missouri
2nd Revised Sheet 2
Replacing 1st Revised Sheet 2

Non-Scannable Map

(Is viewable in the Data Center
200 Madison Street, 1st Floor
Jefferson City MO)

CANCELLED
June 29, 2007
TO-2002-185
Missouri Public
Service Commission

Missouri Public

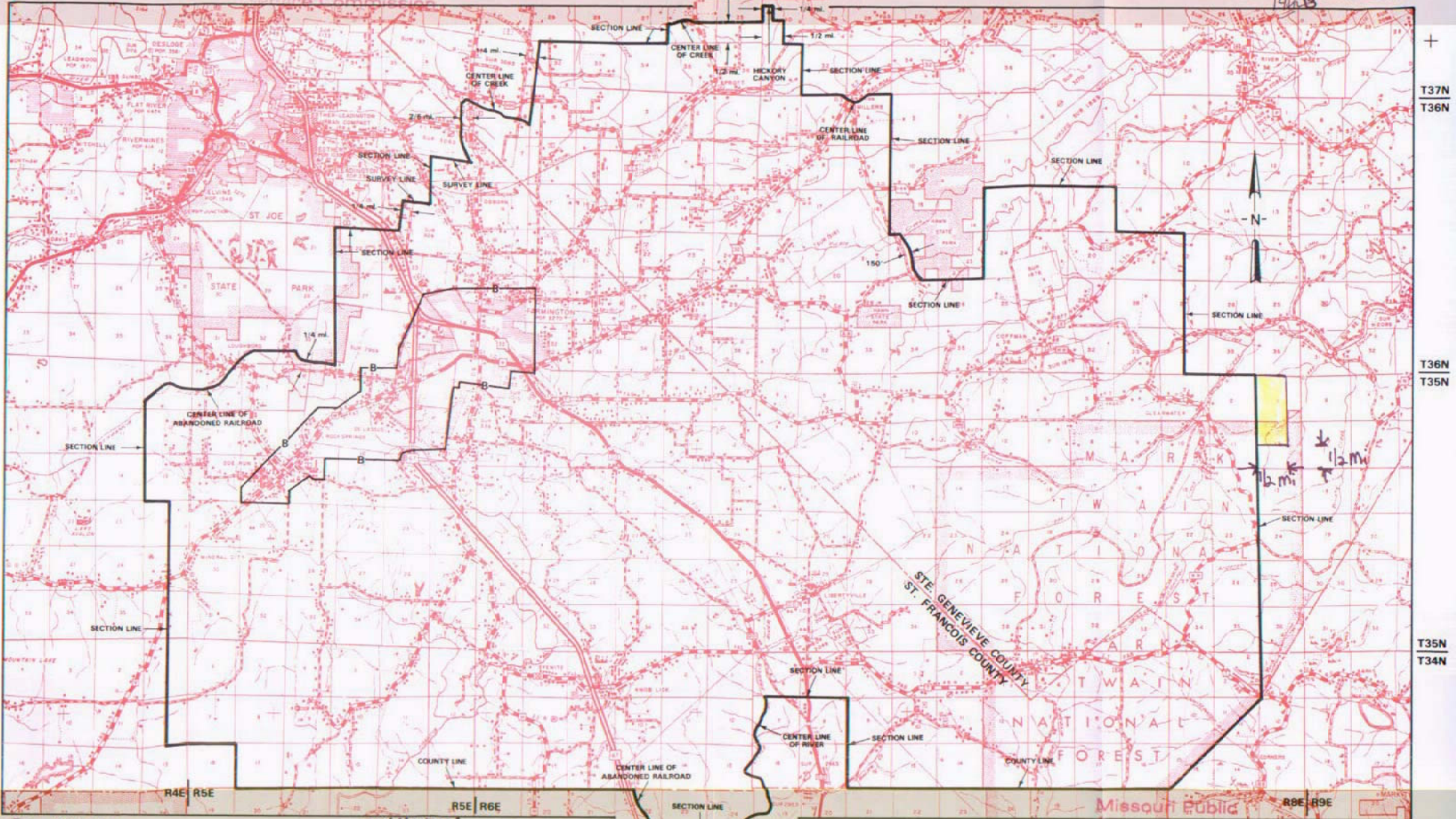
NO SUPPLEMENT TO THIS TARIFF WILL
BE ISSUED EXCEPT FOR THE PURPOSE OF
CANCELING THIS TARIFF.

REC'D JUN 10 2002

P. S. C. Mo. No. 17
EXCHANGE AREA MAP

Farmington, Missouri

15th REVISED SHEET 3
REPLACING 14th REVISED SHEET 3
14th 13



June 10, 2002
MAY 01 1992
Issued:

JAN NEWTON
By R. D. BARRON, President, Missouri Division
Southwestern Bell Telephone Company L.P., d/b/a Southwestern Bell Telephone Company
St. Louis, Missouri

R7E R8E

FILED JUL 10 2002

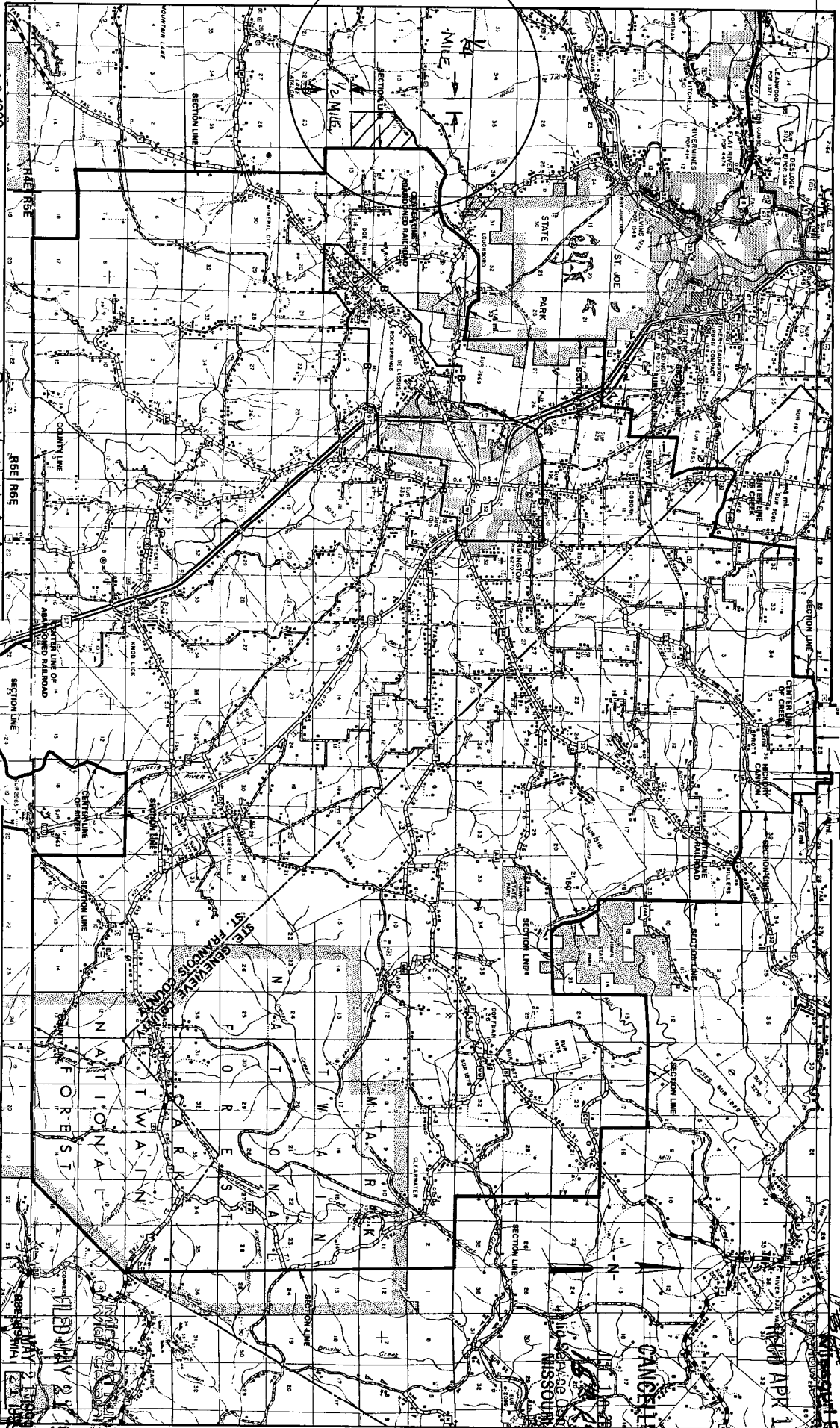
July 10, 2002
Effective: JUN 01 1992

Service Commission

NO SUPPLEMENT TO THIS TARIFF WILL BE ISSUED EXCEPT FOR THE PURPOSE OF CANCELING THIS TARIFF.

P. S. C. Mo. No. 17
EXCHANGE AREA MAP

Farmington, Missouri
REPLACING 12th REVISED SHEET 3
APR 19 1939



APR 19 1939
MAY 01 1939

Prud'homme Hill Ardoin
By Prud'homme Hill Ardoin
Southwestern Bell Telephone Company
St. Louis, Missouri

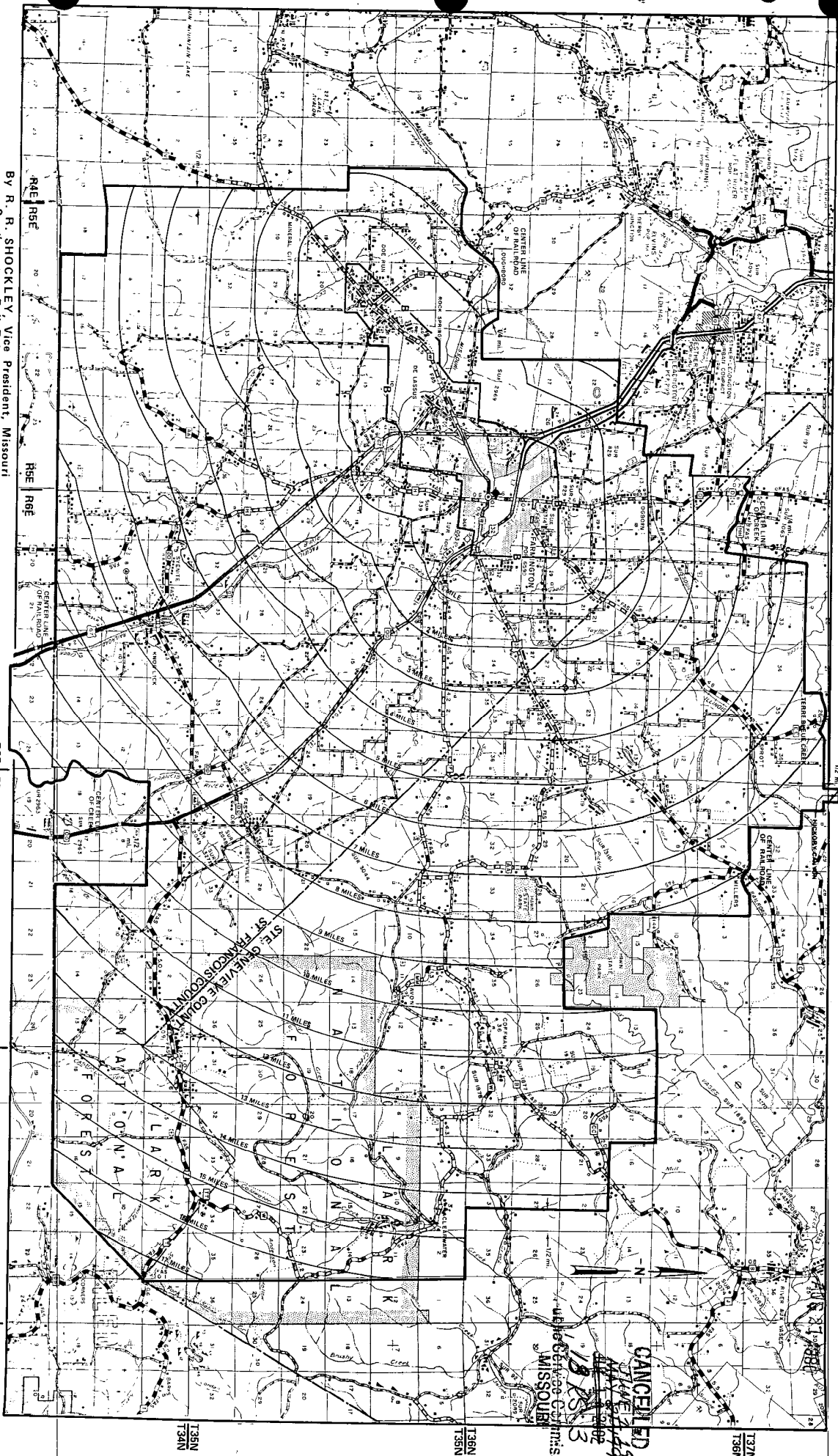
Effective: JUN 01 1939

Public Utility Commission
APR 19 1939

NO SUPPLEMENT TO THIS TARIFF WILL
BE ISSUED EXCEPT FOR THE PURPOSE OF
CANCELING THIS TARIFF.

P. S. C. Mo. No. 17
EXCHANGE AREA MAP

Farmington, Missouri
12th REVISED SHEET 3
REPLACING 11th REVISED SHEET 3



Issued: AUG 21, 1980

By R. R. SHOCKLEY, Vice President, Missouri
Southwestern Bell Telephone
St. Louis, Missouri

Effective: SEPT 22, 1980

No supplement to this
tariff will be issued
except for the purpose
of canceling this tariff

FAIR GROVE, MISSOURI
3rd Revised Sheet 2
Replacing 2nd Revised Sheet 2

BASE RATE AREA MAP

THIS AREA IS INCLUDED IN THE SPRINGFIELD METROPOLITAN EXCHANGE.

RECEIVED

MAY 25 1993

MO. PUBLIC SERVICE COMM.

FILED

JUL 07 1993
72-306

MO. PUBLIC SERVICE COMM.

Issued: MAY 25 1993

Effective: JUL 07 1993

By A. D. ROBERTSON, Assistant Vice President-External Affairs
Southwestern Bell Telephone Company
St. Louis, Missouri

NO SUPPLEMENT TO THIS TARIFF WILL BE ISSUED EXCEPT FOR THE PURPOSE OF CANCELING THIS TARIFF.

P. S. C. Mo. No. 17

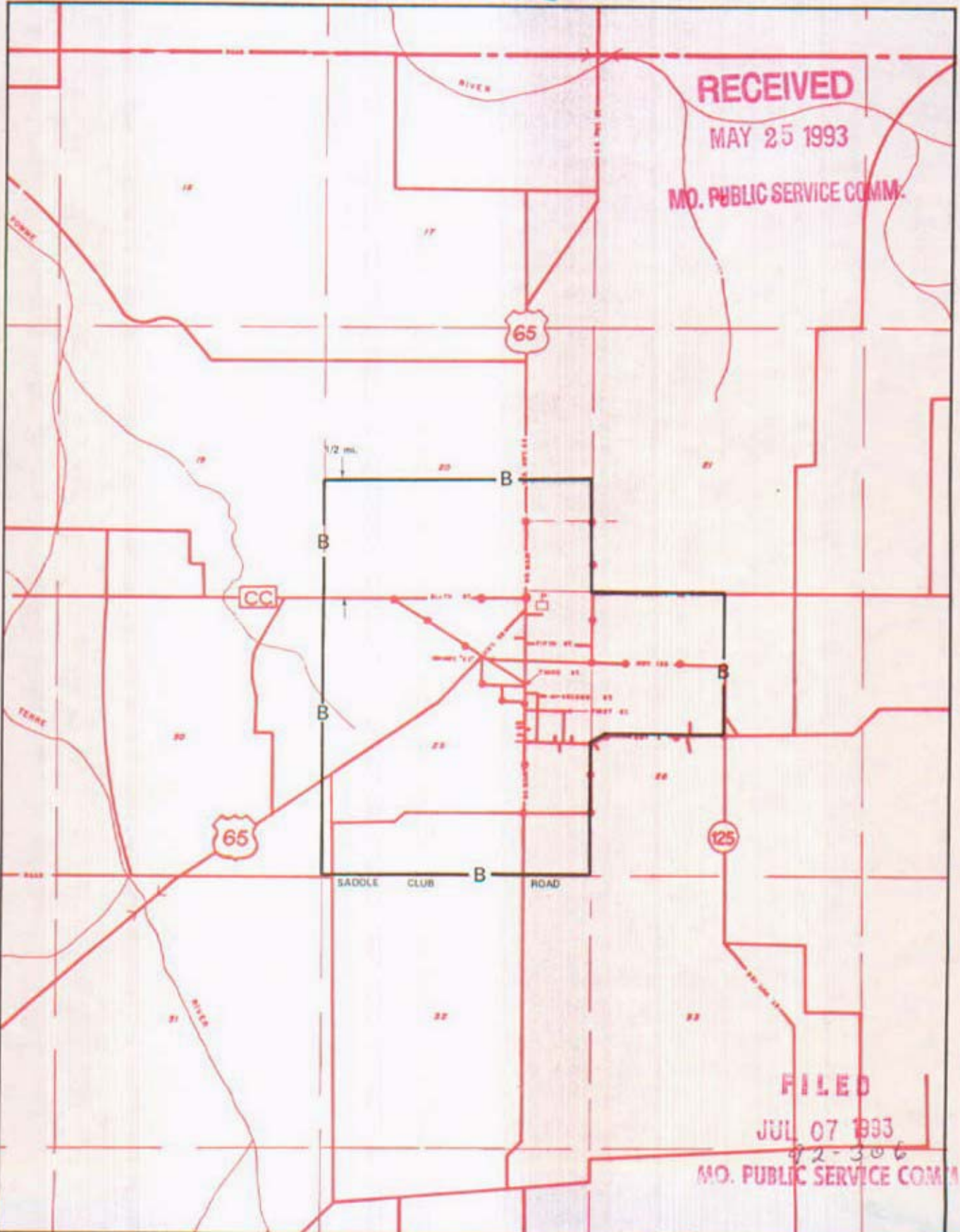
Springfield Metropolitan Exchange

Fair Grove, Missouri
FAIR GROVE ZONE

2nd REVISED SHEET 2
REPLACING 1st REVISED SHEET 2
Original Sheet 2-A

BASE RATE AREA MAP

— DENOTES PROPOSED REVISIONS



By A. D. ROBERTSON, Assistant Vice President - External Affairs

By R. D. BARRON, Vice President, Missouri
Southwestern Bell Telephone Company

MAY 25, 1993

JULY 7, 1993

Issued: MARCH 17, 1983

CANCELLED
June 29, 2007
TO-2002-185
Missouri Public
Service Commission

NO SUPPLEMENT TO THIS TARIFF WILL BE ISSUED EXCEPT FOR THE PURPOSE OF CANCELING THIS TARIFF.

Springfield Metropolitan Exchange

P. S. C. Mo. No. 17
ZONE
EXCHANGE AREA MAP

Fair Grove, Missouri
FAIR GROVE ZONE
~~REVISED SHEET~~
~~REPLACING 818 REVISED SHEET~~
Original Sheet 2-B

DENOTES PROPOSED REVISIONS

RECEIVED

MAY 25 1993

MO. PUBLIC SERVICE COMM.

T33N
T32N

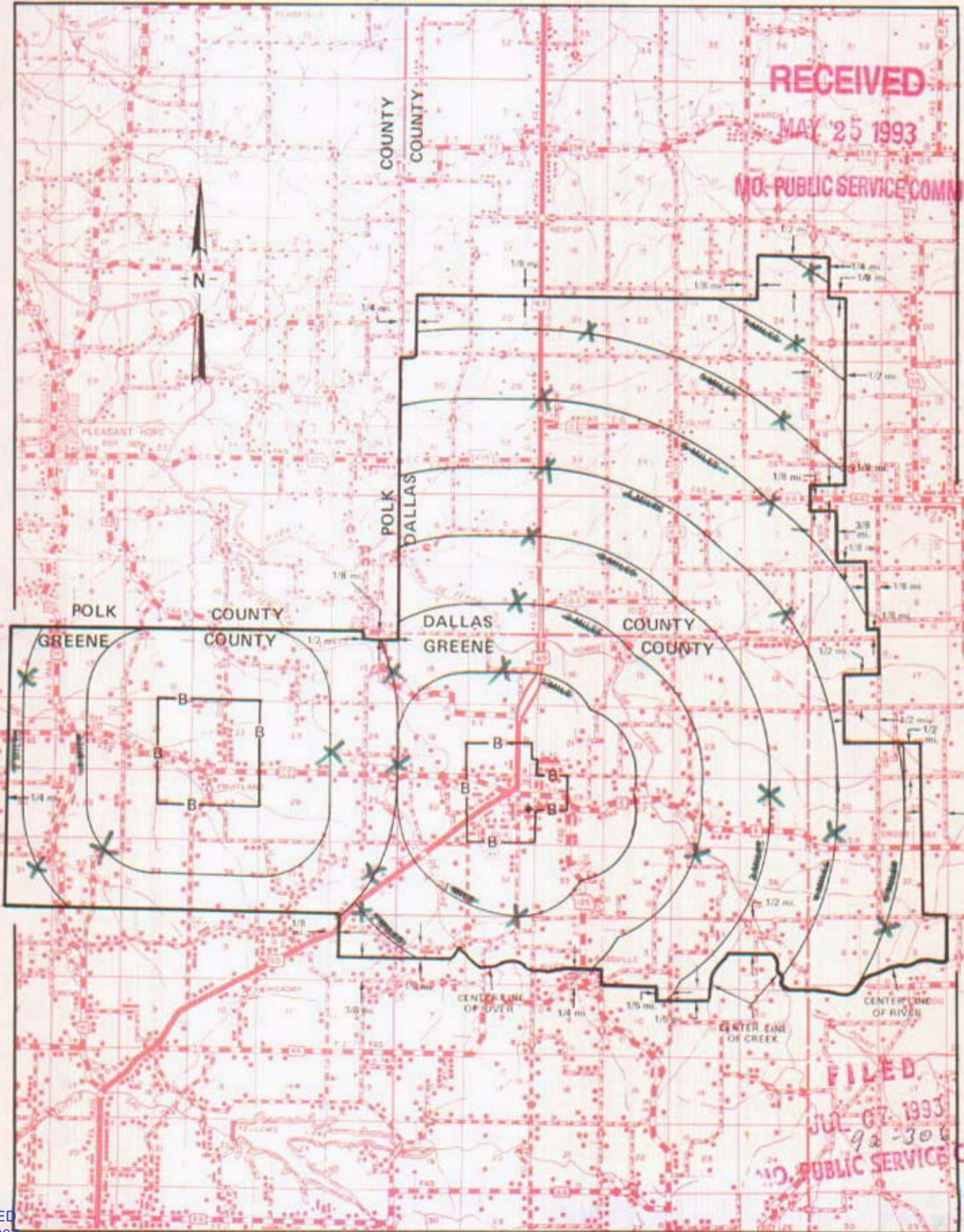
T32N
T31N

T31N
T30N

FILED

JUL 07 1993

92-306
MO. PUBLIC SERVICE COMM.



CANCELLED
June 29, 2007
TO-2002-185
Missouri Public
Service Commission

By **A. D. ROBERTSON,**

R21W | R20W Assistant Vice President R20W | R19W

By **R. D. BARRON,** Vice President, Missouri
Southwestern Bell Telephone Company

External Affairs

MAY 25, 1993

JULY 7, 1993

Issued: MARCH 17, 1983

APRIL 21, 1983

NO SUPPLEMENT TO THIS TARIFF WILL BE ISSUED EXCEPT FOR THE PURPOSE OF CANCELING THIS TARIFF.

P. S. C. Mo. No. 17

Fair Grove, Missouri

EXCHANGE AREA MAP

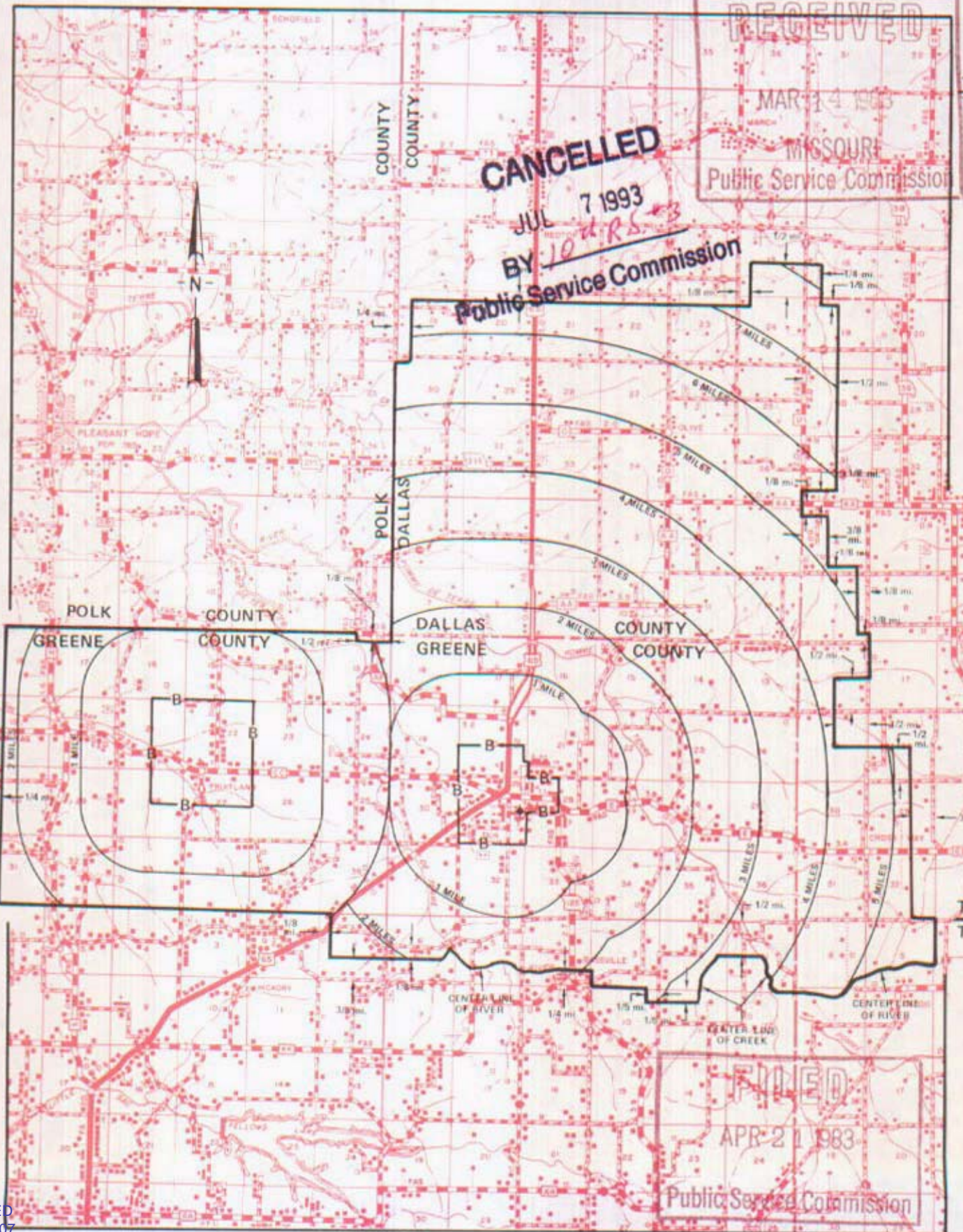
REPLACING 9th REVISED SHEET 3
8th REVISED SHEET 3

RECEIVED
MAR 14 1983
MISSOURI
Public Service Commission

CANCELLED

JUL 7 1993

BY 10 DRS-3
Public Service Commission



T33N
T32N

T32N
T31N

T31N
T30N

FILED
APR 21 1983
Public Service Commission

CANCELLED
June 29, 2007
TO-2002-185
Missouri Public
Service Commission

R21W | R20W
By R. D. BARRON, Vice President, Missouri
Southwestern Bell Telephone Company

R20W | R19W

No supplement to this tariff will be issued except for the purpose of canceling this tariff

FAIR GROVE, MISSOURI
10th Revised Sheet 3
Replacing 9th Revised Sheet 3

EXCHANGE AREA MAP

THIS AREA IS INCLUDED IN THE SPRINGFIELD METROPOLITAN EXCHANGE.

RECEIVED

MAY 25 1993

MO. PUBLIC SERVICE COMM.

FILED

JUL 07 1993

92-306

MO. PUBLIC SERVICE COMM.

Issued: MAY 25 1993

Effective: JUL 07 1993

By A. D. ROBERTSON, Assistant Vice President-External Affairs
Southwestern Bell Telephone Company
St. Louis, Missouri

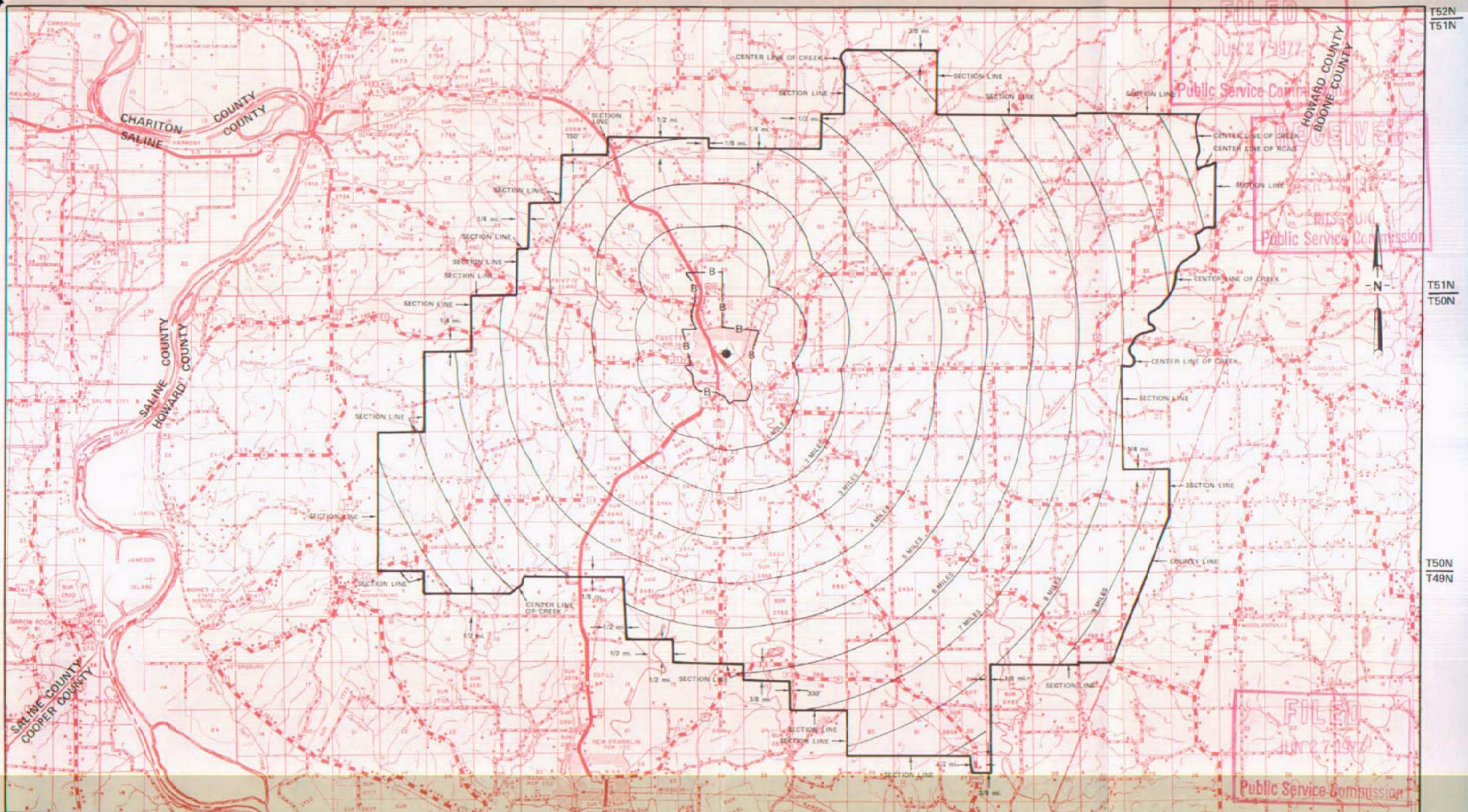
CANCELLED
June 29, 2007
TO-2002-185
Missouri Public
Service Commission

NO SUPPLEMENT TO THIS TARIFF WILL
BE ISSUED EXCEPT FOR THE PURPOSE OF
CANCELING THIS TARIFF.

P. S. C. Mo. No. 17
EXCHANGE AREA MAP

Fayette, Missouri

11th REVISED SHEET 3
REPLACING 10th REVISED SHEET 3



T52N
T51N

T51N
T50N

T50N
T49N

R18W | R17W

By R. R. SHOCKLEY, Vice President, Missouri
Southwestern Bell Telephone Company
St. Louis, Missouri

R17W | R16W

R16W | R15W

R15W | R14W

R14W | R13W

Issued: April 11, 1977

Effective: June 27, 1977

CANCELLED
June 29, 2007
TO-2002-185
Missouri Public
Service Commission

SBC PSC MO #17
Fenton, Missouri
15th Revised Sheet 2
Replacing 14th Revised Sheet 2

Non-Scannable Map

(Is viewable in the Data Center
200 Madison Street, 1st Floor
Jefferson City MO)

SBC Missouri
Exchange Area Map
Fenton
PSC MO No. 17
14th Revised Sheet 2

Non-Scannable Map

(Viewable in the Data Center
located at:
200 Madison Street, 1st Floor
Jefferson City MO)

CANCELLED
June 29, 2007
TO-2002-185
Missouri Public
Service Commission

FERGUSON

see

St. Louis District Exchange RATES

under

"St. Louis"

June 1, 1937

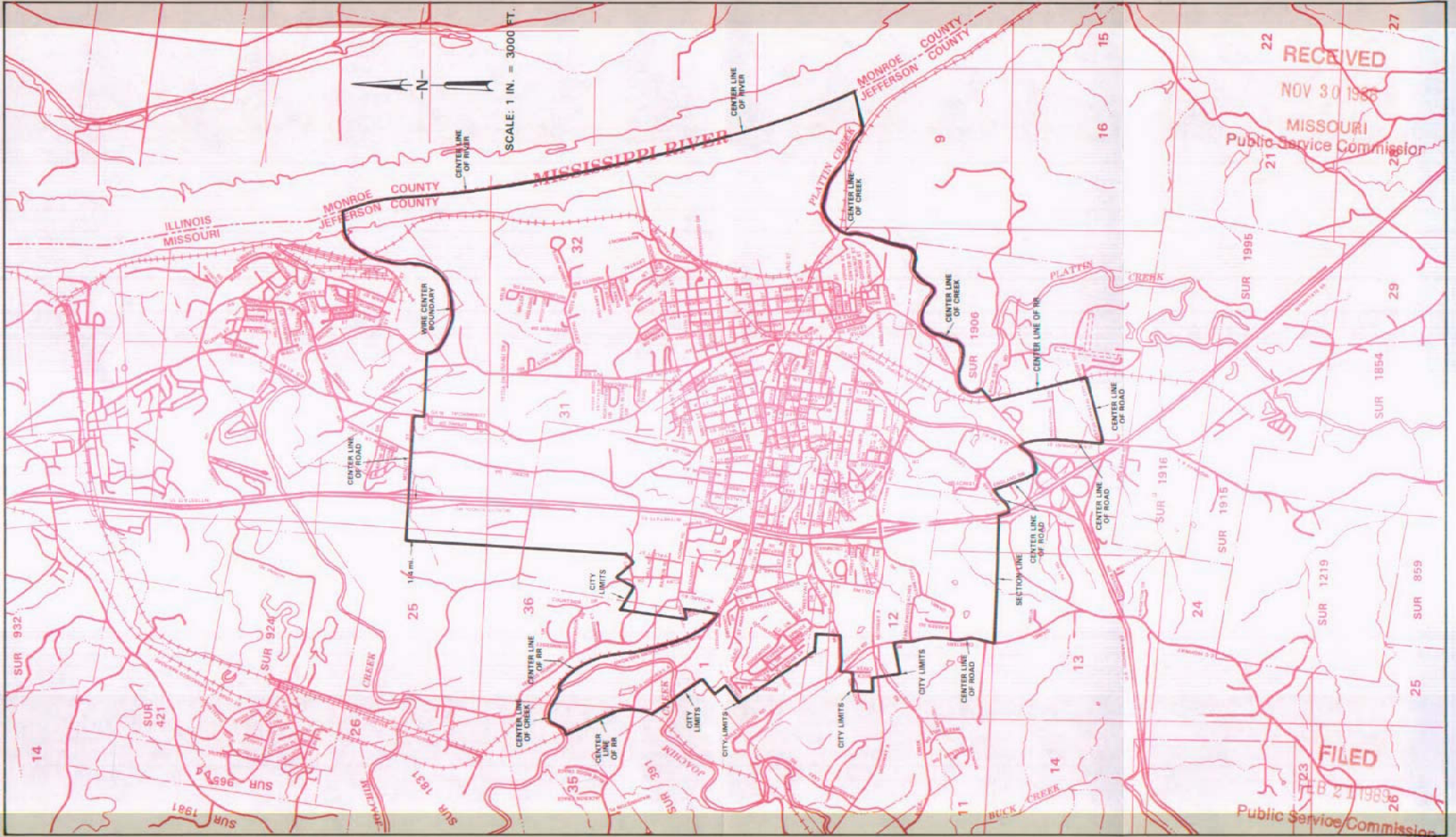
CANCELLED
June 29, 2007
TO-2002-185
Missouri Public
Service Commission

P. S. C. Mo. No. 17
BASE RATE AREA MAP

Festus - Crystal City, Missouri

NO SUPPLEMENT TO THIS TARIFF WILL
BE ISSUED EXCEPT FOR THE PURPOSE OF
CANCELING THIS TARIFF.

3rd REVISED SHEET 2
REPLACING 2nd REVISED SHEET 2



Issued: DEC 5 1988

By R. D. BARRON, President, Missouri Division
Southwestern Bell Telephone Company
St. Louis, Missouri

Effective: FEB 21 1989

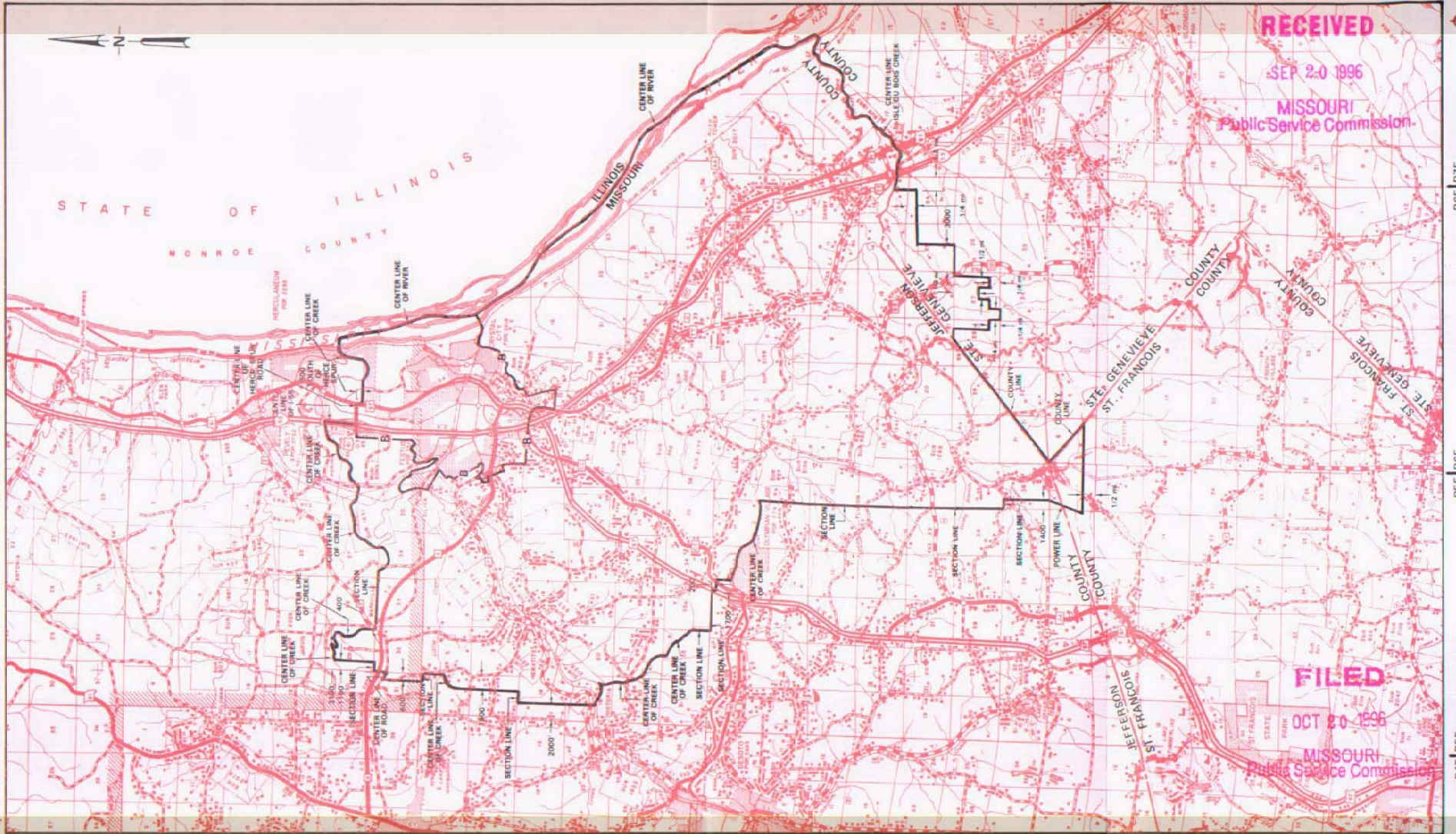
CANCELLED
June 29, 2007
TO-2002-185
Missouri Public
Service Commission

P. S. C. Mo. No. 17
EXCHANGE AREA MAP

Festus-Crystal City, Missouri

9th REVISED SHEET 3
REPLACING 8th REVISED SHEET 3

NO SUPPLEMENT TO THIS TARIFF WILL
BE ISSUED EXCEPT FOR THE PURPOSE OF
CANCELING THIS TARIFF.



RECEIVED
SEP 20 1996
MISSOURI
Public Service Commission

FILED
OCT 20 1996
MISSOURI
Public Service Commission

By KAREN JENNINGS, President - Missouri
Southwestern Bell Telephone Company
St. Louis, Missouri

T41N
T40N

T40N
T39N

T39N
T38N

T38N
T37N

Issued: September 20, 1996

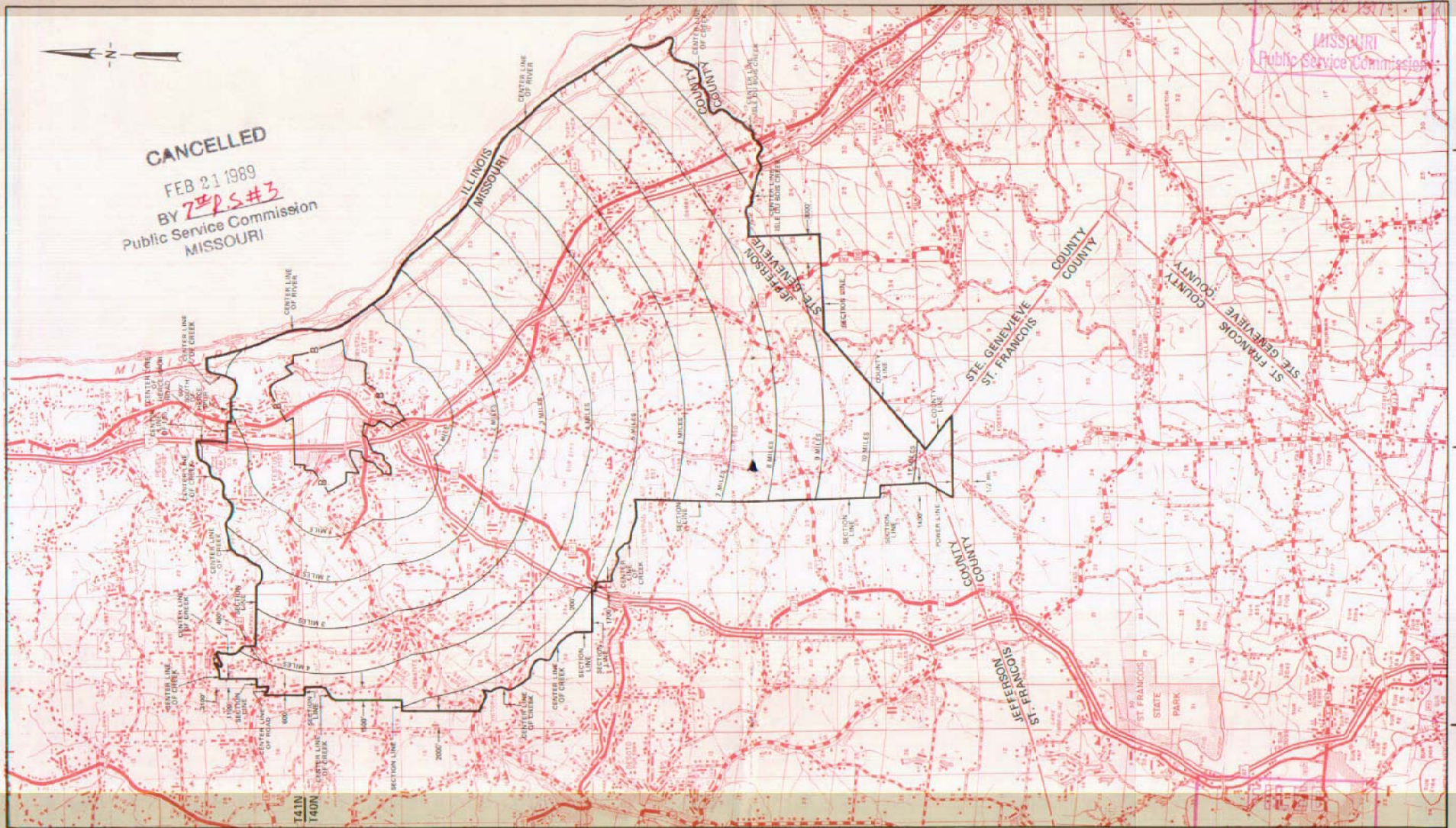
Effective: October 20, 1996

CANCELLED
June 29, 2007
TO-2002-185
Missouri Public
Service Commission

NO SUPPLEMENT TO THIS TARIFF WILL
BE ISSUED EXCEPT FOR THE PURPOSE OF
CANCELING THIS TARIFF.

P. S. C. Mo. No. 17
EXCHANGE AREA MAP

Eastus Crystal City, Missouri
RECEIVED
5th REVISED SHEET 3
REPLACING 5th REVISED SHEET 3



CANCELLED
FEB 21 1969
BY 7th P.S.#3
Public Service Commission
MISSOURI

MISSOURI
Public Service Commission

By R. R. SHOCKLEY, Vice President, Missouri
Southwestern Bell Telephone Company
St. Louis, Missouri

Issued: May 23, 1977

DEC 1 1977
Public Service Commission
Effective: DEC 1 1977

No supplement to this tariff will be issued except for the purpose of cancelling this tariff.

P.S.C. Mo.—No. 17

FISK, MISSOURI
1st Revised Sheet 1
Replacing Original Sheet 1

SOUTHWESTERN BELL TELEPHONE COMPANY
LOCAL EXCHANGE TARIFF
SUPERSEDING ALL TARIFFS PREVIOUSLY ISSUED

RECEIVED
FEB 15 1962
MISSOURI
Public Service Comm.

CANCELLED
June 29, 2007
TO-2002-185
Missouri Public
Service Commission

For local rates applicable to Fisk please refer to the local exchange tariff Sheet 1 and Sheet 1-B.

FILED

MAR 18 1962

PUBLIC SERVICE COMMISSION

Issued: February 16, 1962

Effective: March 18, 1962

By F. B. HUNT, Vice President and General Manager
Southwestern Bell Telephone Company
St. Louis, Missouri

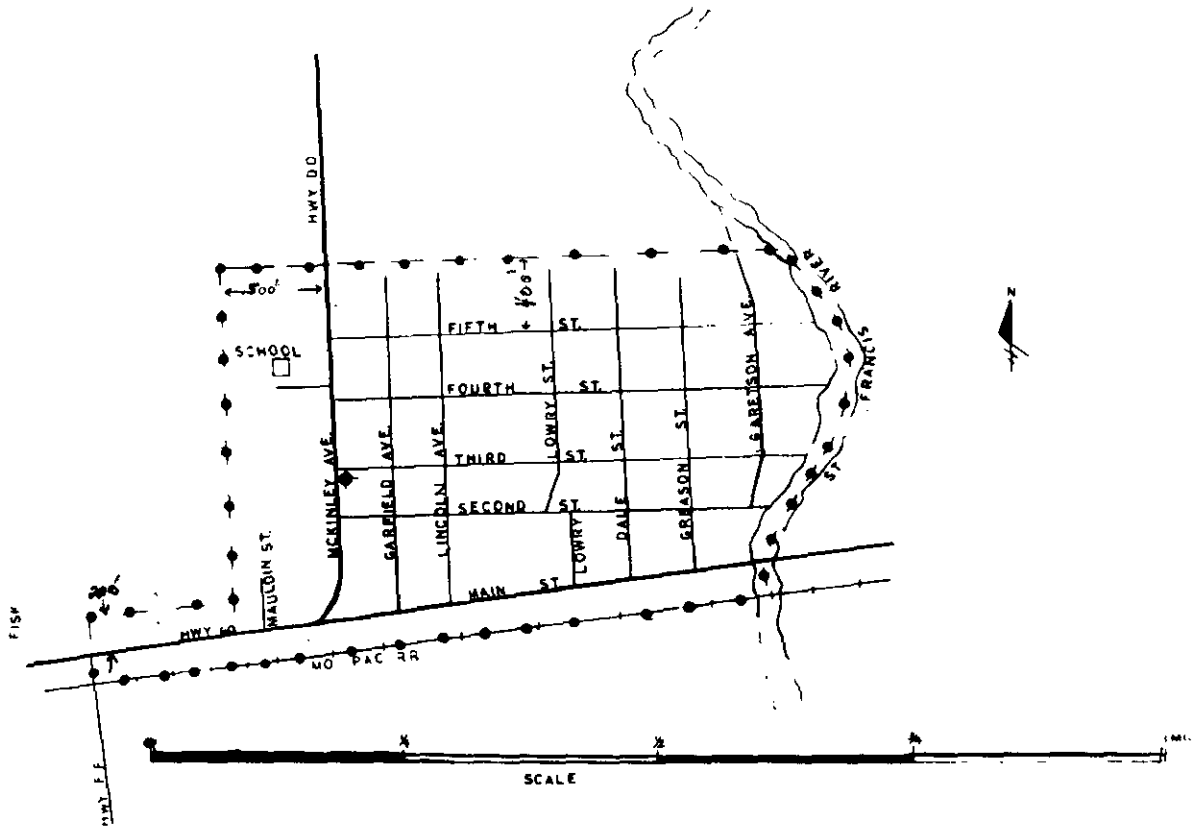
NO SUPPLEMENT TO THIS TARIFF WILL BE ISSUED EXCEPT FOR THE PURPOSE OF CANCELING THIS TARIFF.

Fisk, Misso... ORIGINAL SHEET

P. S. C. Mo. No. 17 BASE RATE AREA MAP

CANCELLED
June 29, 2007
TO-2002-185
Missouri Public
Service Commission

RECEIVED
MAR 7 - 1960
MISSOURI
Public Service Comm.



FISK, MO

FILED

MAR 11 1960

Case No 14,296
PUBLIC SERVICE COMMISSION

CODE
BELL CENTRAL OFFICE: 
BASE RATE AREA LIMITS: 

ISSUED UNDER ORDER OF THE PUBLIC SERVICE COMMISSION IN CASE No. 14296.

Issued: March 11, 1960

Effective: March 11, 1960

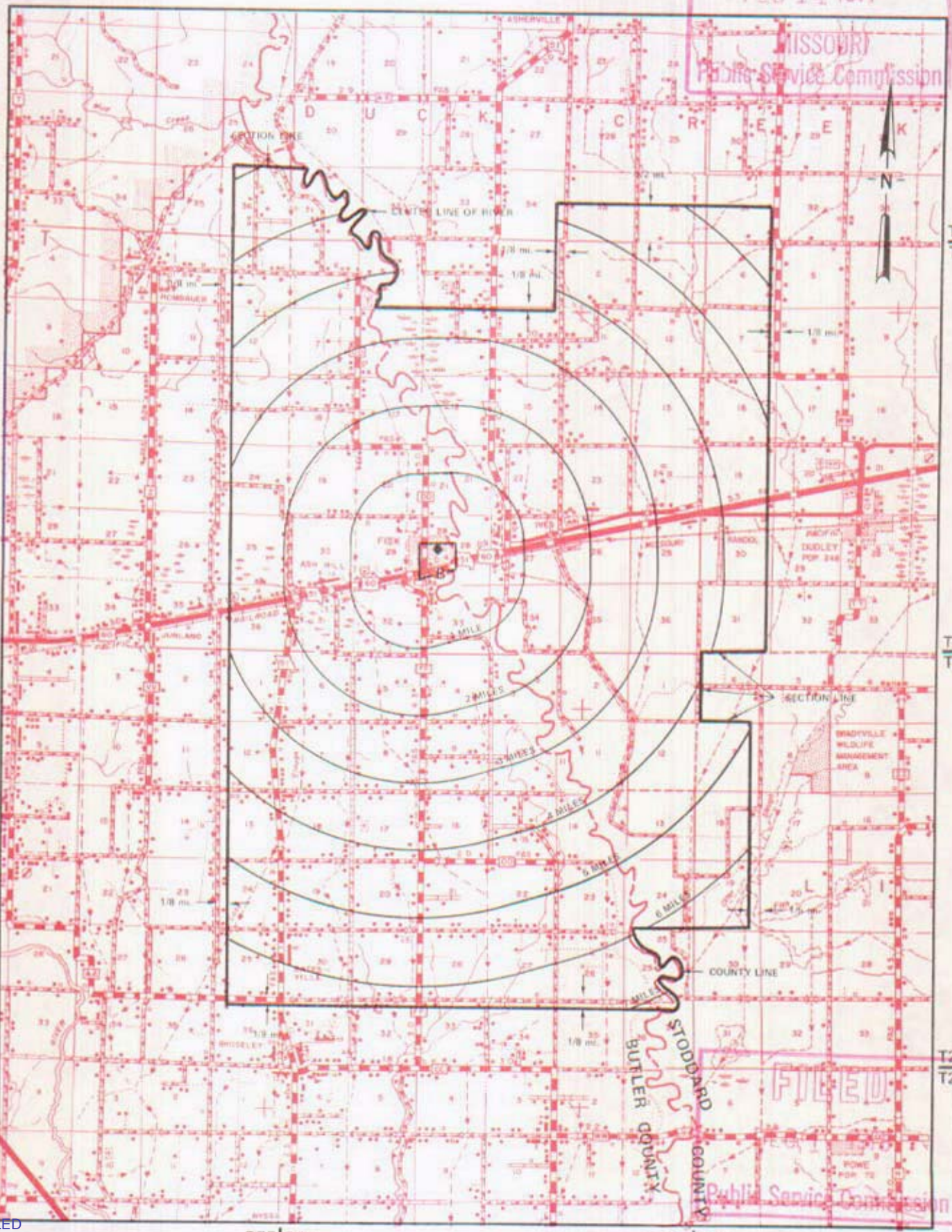
By F. B. HUNT, Vice President and General Manager
Southwestern Bell Telephone Company
St. Louis, Missouri

NO SUPPLEMENT TO THIS TARIFF WILL BE ISSUED EXCEPT FOR THE PURPOSE OF CANCELING THIS TARIFF.

P. S. C. Mo. No. 17
EXCHANGE AREA MAP

Fisk, Missouri
5th REVISED SHEET 3
REPLACING 4th REVISED SHEET 3
FEB 14 1977

MISSOURI
Public Service Commission



T26N
T25N

T25N
T24N

T24N
T23N

R7E | R8E

R8E | R9E

By R. R. SHOCKLEY, Vice President, Missouri
Southwestern Bell Telephone Company
St. Louis, Missouri

FILED
Public Service Commission

CANCELLED
June 29, 2007
TO-2002-185
Missouri Public
Service Commission

Issued: February 15, 1977

Effective: DEC 1 1978

SBC PSC MO #17
Flat River, Missouri
1st Revised Sheet 2
Replacing Original Sheet 2

Non-Scannable Map

(Is viewable in the Data Center
200 Madison Street, 1st Floor
Jefferson City MO)

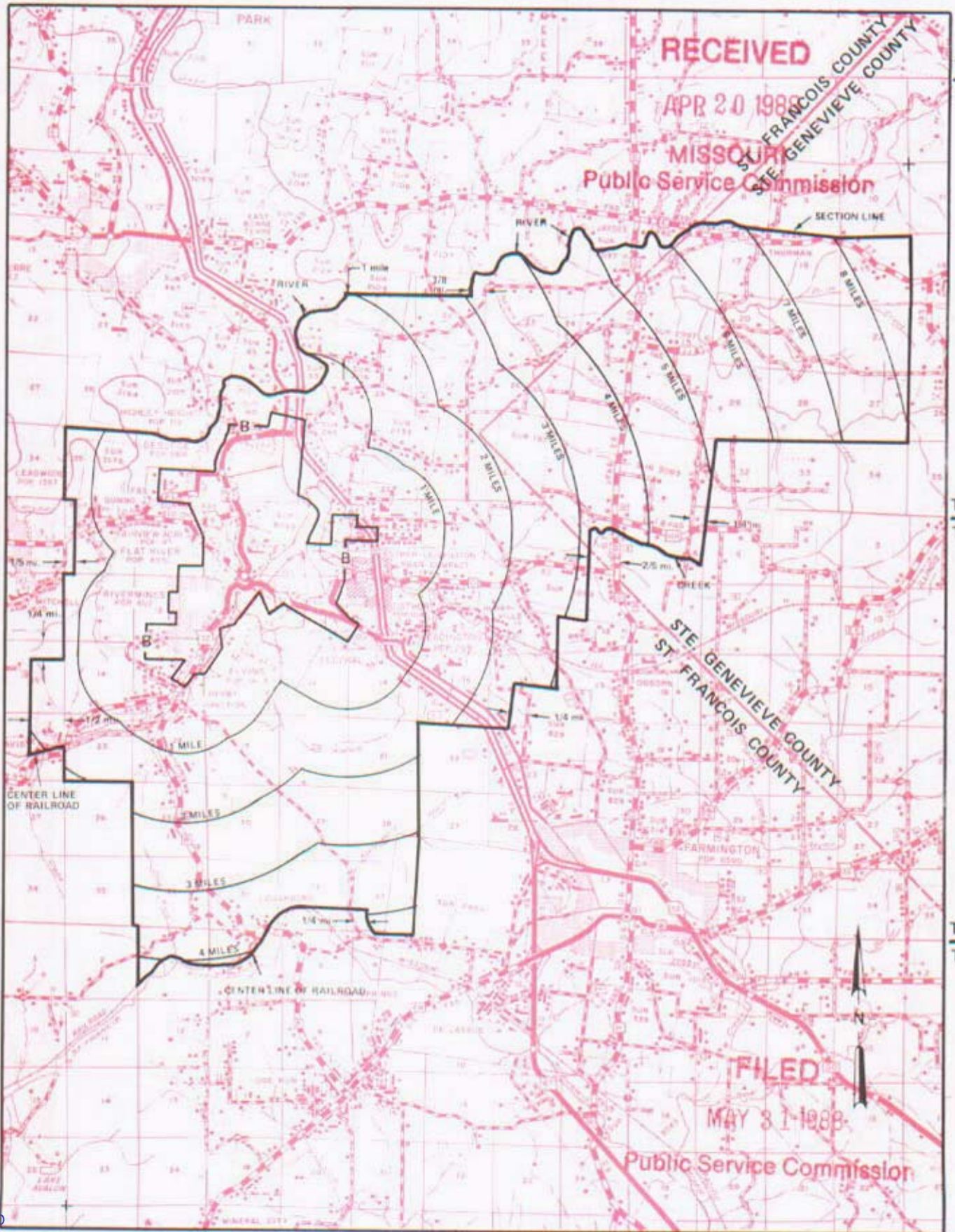
NO SUPPLEMENT TO THIS TARIFF WILL BE ISSUED EXCEPT FOR THE PURPOSE OF CANCELING THIS TARIFF.

Flat River, Missouri

P. S. C. Mo. No. 17

7th REVISED SHEET 3
REPLACING 6th REVISED SHEET 3

EXCHANGE AREA MAP



T38N
T37N

T37N
T36N

T36N
T35N

R4E | R5E

R5E | R6E

By R. D. BARRON, President, Missouri Division
Southwestern Bell Telephone Company
St. Louis, Missouri

Issued: APRIL 29, 1988

Effective: MAY 31, 1988

CANCELLED
June 29, 2007
TO-2002-185
Missouri Public
Service Commission

No Supplement to this tariff will be issued except for the purpose of canceling this tariff.

Missouri Portion-
Fort Scott, Kansas Exchange
30th Revised Sheet 1
Replacing 29th Revised Sheet 1

LOCAL EXCHANGE TARIFF

I. GENERAL

This Tariff is governed, except as otherwise specified herein, by all other Tariffs of the Southwestern Bell Telephone Company on file in the State of Missouri, which are hereby made a part of this Tariff. Unless otherwise specified, the charges quoted in this Tariff or in any other Missouri Tariff are for periods of one month, are payable monthly in advance and entitle the customer to exchange telephone service within the Fort Scott Exchange Area. This Exchange Area includes, in addition to the Missouri Portion, certain territory in the State of Kansas comprising the City of Fort Scott and vicinity, as shown on the Exchange Area Map for this exchange

II. RATES

- A. The rates for main service do not include a Telephone Company-provided instrument, except for Semi-Public Service, which includes one station equipped with a coin-collecting device.
- B. Within the Missouri portion of the exchange, rates will be frozen until March 1, 1995. Urban mileage charges as set forth in Paragraph C. and D. following, apply as applicable, in addition to exchange rates when service is provided outside the Base Rate Area. Exchange rates are as follows:

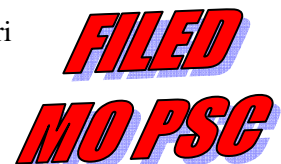
1. Flat Rate Service	Current Rates(1)	
	<u>Business</u>	<u>Residence</u>
One-Party	\$17.56(CR)	\$ 9.51(CR)
Lifeline	N/A	(2)
One-Party Multiline	20.60	N/A
PBX Trunk	29.20	14.70

- (1) See Sheet 1.02 for maximum allowable rates.
- (2) A customer eligible under established criteria can receive a discount from his or her bill for residential essential local telecommunications services, in accordance with P.S.C. Mo. – No. 24, Local Exchange Tariff, Section 1.2.2.E, regarding Lifeline Service.

Issued: October 17, 2005

Effective: December 1, 2005

By CINDY BRINKLEY, President-SBC Missouri
Southwestern Bell Telephone, L.P., d/b/a SBC Missouri
St. Louis, Missouri



No Supplement to this tariff will be issued except for the purpose of canceling this tariff.

Missouri Portion-
Fort Scott, Kansas Exchange
29th Revised Sheet 1
Replacing 28th Revised Sheet 1

(RT)

LOCAL EXCHANGE TARIFF

I. GENERAL

This Tariff is governed, except as otherwise specified herein, by all other Tariffs of the Southwestern Bell Telephone Company on file in the State of Missouri, which are hereby made a part of this Tariff. Unless otherwise specified, the charges quoted in this Tariff or in any other Missouri Tariff are for periods of one month, are payable monthly in advance and entitle the customer to exchange telephone service within the Fort Scott Exchange Area. This Exchange Area includes, in addition to the Missouri Portion, certain territory in the State of Kansas comprising the City of Fort Scott and vicinity, as shown on the Exchange Area Map for this exchange

II. RATES

- A. The rates for main service do not include a Telephone Company-provided instrument, except for Semi-Public Service, which includes one station equipped with a coin-collecting device.
- B. Within the Missouri portion of the exchange, rates will be frozen until March 1, 1995. Urban mileage charges as set forth in Paragraph C. and D. following, apply as applicable, in addition to exchange rates when service is provided outside the Base Rate Area. Exchange rates are as follows:

	Current Rates(1)	
	Business	Residence
1. Flat Rate Service		
One-Party	\$17.91	\$ 9.70
Lifeline	N/A	(2)
One-Party Multiline	20.60	N/A
PBX Trunk	29.20	14.70

(CT)(CR)

CANCELLED

DEC 01 2005

By 30th RS 1
Public Service Commission
MISSOURI

- (1) See Sheet 1.02 for maximum allowable rates.
- (AT) (2) A customer eligible under established criteria can receive a discount from his or her bill for residential essential local telecommunications services, in accordance with P.S.C. Mo. – No. 24, Local Exchange Tariff, Section 1.2.2.E, regarding Lifeline Service.

(AT)

Issued: April 1, 2005

Effective: May 1, 2005

By CINDY BRINKLEY, President-SBC Missouri
Southwestern Bell Telephone, L.P., d/b/a SBC Missouri
St. Louis, Missouri

TO-1998-0329

**FILED
MO PSC**

No Supplement to this tariff will be issued except for the purpose of canceling this tariff.

Missouri Portion-
Fort Scott, Kansas, Exchange
28th Revised Sheet 1
Replacing 27th Revised Sheet 1

SOUTHWESTERN BELL TELEPHONE COMPANY
LOCAL EXCHANGE TARIFF

I. GENERAL

This Tariff is governed, except as otherwise specified herein, by all other Tariffs of the Southwestern Bell Telephone Company on file in the State of Missouri, which are hereby made a part of this Tariff. Unless otherwise specified, the charges quoted in this Tariff or in any other Missouri Tariff are for periods of one month, are payable monthly in advance and entitle the customer to exchange telephone service within the Fort Scott Exchange Area. This Exchange Area includes, in addition to the Missouri Portion, certain territory in the State of Kansas comprising the City of Fort Scott and vicinity, as shown on the Exchange Area Map for this exchange

II. RATES

- A. The rates for main service do not include a Telephone Company-provided instrument, except for Semi-Public Service, which includes one station equipped with a coin-collecting device.
- B. Within the Missouri portion of the exchange, rates will be frozen until March 1, 1995. Urban mileage charges as set forth in Paragraph C. and D. following, apply as applicable, in addition to exchange rates when service is provided outside the Base Rate Area. Exchange rates are as follows:

1. Flat Rate Service	Current Rates(1)	
	Business	Residence
One-Party Lifeline(2)	\$17.91(CR)	\$ 9.70(CR)
One-Party Multiline	N/A	6.20(CR)
PBX Trunk	20.60	N/A
	29.20	14.70

CANCELLED

MAY 01 2005

294hrs 1

**Public Service Commission
MISSOURI**

- (1) See Sheet 1.02 for maximum allowable rates.
- (2) See P.S.C. Mo. – No. 24, Local Exchange Tariff, Section 1.2.2.E, for description, terms and conditions related to Lifeline Service.

Issued: October 15, 2004

Effective: December 1, 2004

By CINDY BRINKLEY, President-SBC Missouri
Southwestern Bell Telephone, L.P., d/b/a SBC Missouri
St. Louis, Missouri

**FILED
MO PSC**

No Supplement to this tariff will be issued except for the purpose of canceling this tariff.

Missouri Portion-
Fort Scott, Kansas, Exchange
27th Revised Sheet 1
Replacing 26th Revised Sheet 1
Missouri Public

SOUTHWESTERN BELL TELEPHONE COMPANY Service Commission
LOCAL EXCHANGE TARIFF

REC'D MAY 10 2004

I. GENERAL

This Tariff is governed, except as otherwise specified herein, by all other Tariffs of the Southwestern Bell Telephone Company on file in the State of Missouri, which are hereby made a part of this Tariff. Unless otherwise specified, the charges quoted in this Tariff or in any other Missouri Tariff are for periods of one month, are payable monthly in advance and entitle the customer to exchange telephone service within the Fort Scott Exchange Area. This Exchange Area includes, in addition to the Missouri Portion, certain territory in the State of Kansas comprising the City of Fort Scott and vicinity, as shown on the Exchange Area Map for this exchange

II. RATES

- A. The rates for main service do not include a Telephone Company-provided instrument, except for Semi-Public Service, which includes one station equipped with a coin-collecting device.
- B. Within the Missouri portion of the exchange, rates will be frozen until March 1, 1995. Urban mileage charges as set forth in Paragraph C. and D. following, apply as applicable, in addition to exchange rates when service is provided outside the Base Rate Area. Exchange rates are as follows:

		Current Rates(1)	
		Business	Residence
1.	Flat Rate Service		
	One-Party	\$18.40	\$ 9.97
(AT)	Lifeline(2)	N/A	6.47(NR)
	One-Party Multiline	20.60	N/A
	PBX Trunk	29.20	14.70

CANCELLED

DEC 01 2004
By *284RSI*
Public Service Commission
MISSOURI

- (1) See Sheet 1.02 for maximum allowable rates.
- (AT) (2) See P.S.C. Mo. – No. 24, Local Exchange Tariff, Section 1.2.2.E, for description, terms and conditions related to Lifeline Service.

Issued: May 10, 2004

Effective: June 9, 2004

By CINDY BRINKLEY, President-SBC Missouri
Southwestern Bell Telephone, L.P., d/b/a SBC Missouri
St. Louis, Missouri

Missouri Public
Service Commission

FILED JUN 09 2004

No Supplement to this tariff will be issued except for the purpose of canceling this tariff.

Missouri Portion-
Fort Scott, Kansas, Exchange
26th Revised Sheet 1
Replacing 25th Revised Sheet 1

SOUTHWESTERN BELL TELEPHONE COMPANY
LOCAL EXCHANGE TARIFF

REC'D OCT 15 2003

I. GENERAL

Service Commission

This Tariff is governed, except as otherwise specified herein, by all other Tariffs of the Southwestern Bell Telephone Company on file in the State of Missouri, which are hereby made a part of this Tariff. Unless otherwise specified, the charges quoted in this Tariff or in any other Missouri Tariff are for periods of one month, are payable monthly in advance and entitle the customer to exchange telephone service within the Fort Scott Exchange Area. This Exchange Area includes, in addition to the Missouri Portion, certain territory in the State of Kansas comprising the City of Fort Scott and vicinity, as shown on the Exchange Area Map for this exchange

II. RATES

- A. The rates for main service do not include a Telephone Company-provided instrument, except for Semi-Public Service, which includes one station equipped with a coin-collecting device.
- B. Within the Missouri portion of the exchange, rates will be frozen until March 1, 1995. Urban mileage charges as set forth in Paragraph C. and D. following, apply as applicable, in addition to exchange rates when service is provided outside the Base Rate Area. Exchange rates are as follows:

	Current Rates(1)	
	Business	Residence
1. Flat Rate Service		
One-Party	\$18.40(CR)	\$ 9.97
One-Party Multiline	20.60	N/A
PBX Trunk	29.20	14.70

CANCELLED
JUN 09 2004
By *[Signature]*
Public Service Commission
MISSOURI

(1) See Sheet 1.02 for maximum allowable rates.

Issued: October 15, 2003

Effective: December 1, 2003

By CINDY BRINKLEY, President-SBC Missouri
Southwestern Bell Telephone, L.P., d/b/a SBC Missouri
St. Louis, Missouri

Missouri Public
Service Commission

FILED DEC 01 2003

No Supplement to this tariff will be issued except for the purpose of canceling this tariff.

Missouri Portion-
Fort Scott, Kansas, Exchange
25th Revised Sheet 1
Replacing 24th Revised Sheet 1

SOUTHWESTERN BELL TELEPHONE COMPANY
LOCAL EXCHANGE TARIFF

Missouri Public
Service Commission

I. GENERAL

REC'D OCT 15 2002

This Tariff is governed, except as otherwise specified herein, by all other Tariffs of the Southwestern Bell Telephone Company on file in the State of Missouri, which are hereby made a part of this Tariff. Unless otherwise specified, the charges quoted in this Tariff or in any other Missouri Tariff are for periods of one month, are payable monthly in advance and entitle the customer to exchange telephone service within the Fort Scott Exchange Area. This Exchange Area includes, in addition to the Missouri Portion, certain territory in the State of Kansas comprising the City of Fort Scott and vicinity, as shown on the Exchange Area Map for this exchange

II. RATES

- A. The rates for main service do not include a Telephone Company-provided instrument, except for Semi-Public Service, which includes one station equipped with a coin-collecting device.
- B. Within the Missouri portion of the exchange, rates will be frozen until March 1, 1995. Urban mileage charges as set forth in Paragraph C. and D. following, apply as applicable, in addition to exchange rates when service is provided outside the Base Rate Area. Exchange rates are as follows:

1. Flat Rate Service	Current Rates(1)	
	Business	Residence
One-Party	\$18.41(CR)	\$9.97(CR)
One-Party Multiline	20.60	N/A
PBX Trunk	29.20	14.70

CANCELLED

DEC 01 2003

By *26th RS 1*
Public Service Commission
MISSOURI

Missouri Public
Service Commission

FILED DEC 01 2002

(MT)

(MT)

(CT)

(1) See Sheet 1.02 for maximum allowable rates.

Issued: October 15, 2002

Effective: December 1, 2002

By CINDY BRINKLEY, President-Missouri
Southwestern Bell Telephone, L.P., d/b/a Southwestern Bell Telephone Company
St. Louis, Missouri

No supplement to this tariff will be issued except for the purpose of canceling this tariff.

MISSOURI PORTION-FORT SCOTT, KANSAS, EXCHANGE

24th Revised Sheet 1

Replacing 23rd Revised Sheet

Missouri Public

SOUTHWESTERN BELL TELEPHONE COMPANY LOCAL EXCHANGE TARIFF

REC'D OCT 01 2001

I. GENERAL

Service Commission

This Tariff is governed, except as otherwise specified herein, by all other Tariffs of the Southwestern Bell Telephone Company on file in the State of Missouri, which are hereby made a part of this Tariff. Unless otherwise specified, the charges quoted in this Tariff or in any other Missouri Tariff are for periods of one month, are payable monthly in advance and entitle the customer to exchange telephone service within the Fort Scott Exchange Area. This Exchange Area includes, in addition to the Missouri Portion, certain territory in the State of Kansas comprising the City of Fort Scott and vicinity, as shown on the Exchange Area Map for this exchange.

II. RATES

- A. The rates for main service do not include a Telephone Company-provided instrument, except for Semi-Public Service, which includes one station equipped with a coin-collecting device.
- B. Within the Missouri portion of the exchange, rates will be frozen until March 1, 1995. Urban mileage charges as set forth in Paragraph C. and D. following, apply as applicable, in addition to exchange rates when service is provided outside the Base Rate Area. Exchange rates are as follows:

Current rates (1)

1. Flat Rate Service

CANCELLED

Business

Residence

One-Party

\$18.24(CR)

\$9.89(CR)

One-Party Multiline

20.60

N/A

PBX Trunk

29.20

14.70

DEC 01 2002
264KRS1
Public Service Commission
MISSOURI

- C. The following urban mileage charge applies to those customers provided exchange service located outside the base rate area:

Current rates (1)

Urban Mileage Charge, per line

USOC
ILS1H

Monthly Rate
\$4.53(CR)

- D. The following urban mileage charge applies to former two-party customers who were located two miles beyond the Suburban Service Area boundary prior to the conversion of the exchange to one-party service. The charge applies to "existing installations, at existing locations, for existing customers:"

Current rates (1)

Urban Mileage Charge, per line

USOC
XUDV3

Monthly Rate
\$3.39(CR)

(1) See Sheet 1.01 for maximum allowable rates.

Issued: October 1, 2001

Effective: December 1, 2001

By JAN NEWTON, President-Missouri
Southwestern Bell Telephone Company
St. Louis, Missouri

Missouri Public

FILED DEC 01 2001

Service Commission

No supplement to this tariff will be issued except for the purpose of canceling this tariff.

MISSOURI PORTION-FORT SCOTT, KANSAS, EXCHANGE
23rd Revised Sheet 1
Replacing 22nd Revised Sheet 1

SOUTHWESTERN BELL TELEPHONE COMPANY
LOCAL EXCHANGE TARIFF

Missouri Public Service Commission

REC'D OCT 02 2000

I. GENERAL

This Tariff is governed, except as otherwise specified herein, by all other Tariffs of the Southwestern Bell Telephone Company on file in the State of Missouri, which are hereby made a part of this Tariff. Unless otherwise specified, the charges quoted in this Tariff or in any other Missouri Tariff are for periods of one month, are payable monthly in advance and entitle the customer to exchange telephone service within the Fort Scott Exchange Area. This Exchange Area includes, in addition to the Missouri Portion, certain territory in the State of Kansas comprising the City of Fort Scott and vicinity, as shown on the Exchange Area Map for this exchange.

II. RATES

- A. The rates for main service do not include a Telephone Company-provided instrument, except for Semi-Public Service, which includes one station equipped with a coin-collecting device.
- B. Within the Missouri portion of the exchange, rates will be frozen until March 1, 1995. Urban mileage charges as set forth in Paragraph C. and D. following, apply as applicable, in addition to exchange rates when service is provided outside the Base Rate Area. Exchange rates are as follows:

(AT)

CURRENT RATES (1)

1. Flat Rate Service	<u>Business</u>	<u>Residence</u>
One-Party	\$18.38(CR)	\$9.96(CR)
One-Party Multiline	20.60	N/A
PBX Trunk	29.20	14.70

(AT)

- C. The following urban mileage charge applies to those customers provided exchange service located outside the base rate area:

(AT)

CURRENT RATES (1)

	<u>USOC</u>	<u>Monthly Rate</u>
Urban Mileage Charge, per line	ILS1H	\$4.56(CR)

- D. The following urban mileage charge applies to former two-party customers who were located two miles beyond the Suburban Service Area boundary prior to the conversion of the exchange to one-party service. The charge applies to "existing installations, at existing locations, for existing customers:"

(AT)

CANCELLED

CURRENT RATES (1)

	<u>USOC</u>	<u>Monthly Rate</u>
Urban Mileage Charge, per line	XUDV3	\$3.42(CR)

DEC 01 2001

Missouri Public Service Commission
MISSOURI

FILED DEC 01 2000

(AT)

(1) See Sheet 1.01 for maximum allowable rates.

No supplement to this tariff will be issued except for the purpose of canceling this tariff.

MISSOURI PORTION-FORT SCOTT, KANSAS, EXCHANGE
22nd Revised Sheet 1
Replacing 21st Revised Sheet 1

RECEIVED

SOUTHWESTERN BELL TELEPHONE COMPANY
LOCAL EXCHANGE TARIFF

JUL 31 1996

I. GENERAL

This Tariff is governed, except as otherwise specified hereon, by the Missouri Tariffs of the Southwestern Bell Telephone Company on file in the State of Missouri, which are hereby made a part of this Tariff. Unless otherwise specified, the charges quoted in this Tariff or in any other Missouri Tariff are for periods of one month, are payable monthly in advance and entitle the customer to exchange telephone service within the Fort Scott Exchange Area. This Exchange Area includes, in addition to the Missouri Portion, certain territory in the State of Kansas comprising the City of Fort Scott and vicinity, as shown on the Exchange Area Map for this exchange.

**MISSOURI
Public Service Commission**

II. RATES

- A. The rates for main service do not include a Telephone Company-provided instrument, except for Semi-Public Service, which includes one station equipped with a coin-collecting device.
- B. Within the Missouri portion of the exchange, rates will be frozen until March 1, 1995. Urban mileage charges as set forth in Paragraph C. and D. following, apply as applicable, in addition to exchange rates when service is provided outside the Base Rate Area. Exchange rates are as follows:

1. Flat Rate Service	<u>Business</u>	<u>Residence</u>
One-Party	(CR) \$18.55	\$10.05
Semi-Public	(C) 23.00	N/A
One-Party Multiline	(CR) 20.60	N/A
PBX Trunk	(CR) 29.20	14.70

- C. The following urban mileage charge applies to those customers provided exchange service located outside the base rate area:

	<u>USOC</u>	<u>Monthly Rate</u>
Urban Mileage Charge, per line	1LS1H	\$4.60

- D. The following urban mileage charge applies to former two-party customers who were located two miles beyond the Suburban Service Area boundary prior to the conversion of the exchange to one-party service. The charge applies to "existing installations, at existing locations, for existing customers:"

	<u>USOC</u>	<u>Monthly Rate</u>
Urban Mileage Charge, per line	XUDV3	\$3.45

CANCELLED

Issued:

JUL 31 1996

DEC 01 2000

Effective:

AUG 30 1996

FILED

By *23ra RSI*
HORACE WILKINS, JR., President-Missouri
Southwestern Bell Telephone Company
St. Louis, Missouri

AUG 30 1996

MO. PUBLIC SERVICE COMM

No supplement to this tariff will be issued except for the purpose of canceling this tariff.

MISSOURI PORTION-FORT SCOTT, KANSAS EXCHANGE
21st Revised Sheet 1
Replacing 20th Revised Sheet 1

RECEIVED

SOUTHWESTERN BELL TELEPHONE COMPANY
LOCAL EXCHANGE TARIFF

DEC 4 1992

I. GENERAL

MO. PUBLIC SERVICE COMM.

This Tariff is governed, except as otherwise specified herein, by all other Tariffs of the Southwestern Bell Telephone Company on file in the State of Missouri, which are hereby made a part of this Tariff. Unless otherwise specified, the charges quoted in this Tariff or in any other Missouri Tariff are for periods of one month, are payable monthly in advance and entitle the customer to exchange telephone service within the Fort Scott Exchange Area. This Exchange Area includes, in addition to the Missouri Portion territory in the State of Kansas comprising the City of Fort Scott and vicinity, as shown on the Exchange Area Map for this exchange.

CANCELLED

II. RATES

A. The rates for main service do not include a Telephone Company provided equipment, except for Semi-Public Service, which includes one station with a coin-collecting device. *BY Public Service Commission MISSOURI*

AUG 30 1996
BY *Public Service Commission MISSOURI*

(CP) B. Within the Missouri portion of the exchange, rates will be frozen until March 1, 1995. Urban mileage charges as set forth in Paragraph C. and D. following, apply as applicable, in addition to exchange rates when service is provided outside the Base Rate Area. Exchange rates are as follows:

	1. Flat Rate Service		<u>Business</u>		<u>Residence</u>
(RT)	One-Party		\$16.80	(DR)	\$ 9.80
	Semi-Public		7.98		N/A
	One-Party Multiline		18.60		N/A
(RT)	PBX Trunk		26.10	(DR)	14.30

(AT) C. The following urban mileage charge applies to those customers provided exchange service located outside the base rate area:

		<u>USOC</u>		<u>Monthly Rate</u>
	Urban Mileage Charge, per line	1LS1H	(NR)	\$4.60

D. The following urban mileage charge applies to former two-party customers who were located two miles beyond the Suburban Service Area boundary prior to the conversion of the exchange to one-party service. The charge applies to "existing installations, at existing locations, for existing customers":

(AT)	Urban Mileage Charge, per line	<u>USOC</u>		<u>Monthly Rate</u>
		XUDV3	(NR)	\$3.45

FILED

JAN 21 1993

Issued: DEC 07 1992

Effective: ~~JAN 21 1993~~ MO. PUBLIC SERVICE COMM. JAN 21 1993

By A. D. ROBERTSON, Assistant Vice President-External Affairs
Southwestern Bell Telephone Company
St. Louis, Missouri

(RT) No Supplement to this
tariff will be issued
except for the purpose
of canceling this tariff.

LOCAL EXCHANGE TARIFF

II. RATES (cont'd)

- C. The following urban mileage charge applies to those customers provided exchange service located outside the base rate area:

	Current Rates(1)	
	<u>USOC</u>	<u>Monthly Rate</u>
Urban Mileage Charge, per line	1LS1H	\$4.36(CR)

- D. The following urban mileage charge applies to former two-party customers who were located two miles beyond the Suburban Service Area boundary prior to the conversion of the exchange to one-party service. The charge applies to "existing installations, at existing locations, for existing customers":

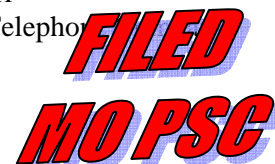
	Current Rates(1)	
	<u>USOC</u>	<u>Monthly Rate</u>
Urban Mileage Charge, per line	XUDV3	\$3.26(CR)

(1) See Sheet 1.02 for maximum allowable rates.

Issued: October 17, 2005

Effective: December 1, 2005

By CINDY BRINKLEY, President-Missouri
Southwestern Bell Telephone, L.P., d/b/a Southwestern Bell Telephone
St. Louis, Missouri



No Supplement to this tariff will be issued except for the purpose of canceling this tariff.

Missouri Portion-
Fort Scott, Kansas, Exchange
10th Revised Sheet 1.01
Replacing 9th Revised Sheet 1.01

SOUTHWESTERN BELL TELEPHONE COMPANY
LOCAL EXCHANGE TARIFF

II. RATES (cont'd)

C. The following urban mileage charge applies to those customers provided exchange service located outside the base rate area:

	Current Rates(1)	
	USOC	Monthly Rate
Urban Mileage Charge, per line	1LS1H	\$4.45(CR)

D. The following urban mileage charge applies to former two-party customers who were located two miles beyond the Suburban Service Area boundary prior to the conversion of the exchange to one-party service. The charge applies to "existing installations, at existing locations, for existing customers:"

	Current Rates(1)	
	USOC	Monthly Rate
Urban Mileage Charge, per line	XUDV3	\$3.33(CR)

CANCELLED

DEC 01 2005

By *11/24/05 RS 1.01*
Public Service Commission
MISSOURI

(1) See Sheet 1.02 for maximum allowable rates.

Issued: October 15, 2004

Effective: December 1, 2004

By CINDY BRINKLEY, President-Missouri
Southwestern Bell Telephone, L.P., d/b/a Southwestern Bell Telephone Company
St. Louis, Missouri

FILED
MO PSC

No Supplement to this tariff will be issued except for the purpose of canceling this tariff.

Missouri Portion-
Fort Scott, Kansas, Exchange
9th Revised Sheet 1.01
Replacing 8th Revised Sheet 1.01

SOUTHWESTERN BELL TELEPHONE COMPANY
LOCAL EXCHANGE TARIFF

Missouri Public
Service Commission

REC'D OCT 15 2002

(MT) II. RATES (cont'd)

C. The following urban mileage charge applies to those customers provided exchange service located outside the base rate area:

	Current Rates(1)	
	<u>USOC</u>	<u>Monthly Rate</u>
Urban Mileage Charge, per line	ILS1H	\$4.57(CR)

D. The following urban mileage charge applies to former two-party customers who were located two miles beyond the Suburban Service Area boundary prior to the conversion of the exchange to one-party service. The charge applies to "existing installations, at existing locations, for existing customers:"

	Current Rates(1)	
	<u>USOC</u>	<u>Monthly Rate</u>
Urban Mileage Charge, per line	XUDV3	\$3.42(CR)

CANCELLED

DEC 01 2004
By *JARS 1.01*
Public Service Commission
MISSOURI

Missouri Public
Service Commission

FILED DEC 01 2002

(MT) (1) See Sheet 1.02 for maximum allowable rates.

Issued: October 15, 2002

Effective: December 1, 2002

By CINDY BRINKLEY, President-Missouri
Southwestern Bell Telephone, L.P., d/b/a Southwestern Bell Telephone Company
St. Louis, Missouri

No supplement to this tariff will be issued except for the purpose of canceling this tariff.

MISSOURI PORTION-FORT SCOTT, KANSAS, EXCHANGE
8th Revised Sheet 1.01
Replacing 7th Revised Sheet 1.01

Missouri Public

SOUTHWESTERN BELL TELEPHONE COMPANY
LOCAL EXCHANGE TARIFF

REC'D OCT 01 2001

MAXIMUM rates Service Commission

1. Flat Rate Service

Business

Residence

One-Party

\$18.24 (CR)

\$9.89 (CR)

MAXIMUM rates

Urban Mileage Charge, per line

USOC
1LS1H

Monthly Rate
\$4.53 (CR)

MAXIMUM rates

Urban Mileage Charge, per line

USOC
XUDV3

Monthly Rate
\$3.39 (CR)

CANCELLED

DEC 01 2002

944RS 1.01
Missouri Public Service Commission
MISSOURI

Issued: October 1, 2001

Effective: December 1, 2001

By JAN NEWTON, President-Missouri
Southwestern Bell Telephone Company
St. Louis, Missouri

Missouri Public

FILED DEC 01 2001

Service Commission

No supplement to this tariff will be issued except for the purpose of canceling this tariff.

MISSOURI PORTION-FORT SCOTT, KANSAS, EXCHANGE
7th Revised Sheet 1.01
Replacing 6th Revised Sheet 1.01

SOUTHWESTERN BELL TELEPHONE COMPANY
LOCAL EXCHANGE TARIFF

Missouri Public
Service Commission

REC'D OCT 02 2000

MAXIMUM RATES

1. Flat Rate Service	<u>Business</u>	<u>Residence</u>
One-Party	\$18.38	\$9.96

MAXIMUM RATES

Urban Mileage Charge, per line	<u>USOC</u> ILSIH	<u>Monthly Rate</u> \$4.56
--------------------------------	----------------------	-------------------------------

MAXIMUM RATES

Urban Mileage Charge, per line	<u>USOC</u> XUDV3	<u>Monthly Rate</u> \$3.42
--------------------------------	----------------------	-------------------------------

CANCELLED

DEC 01 2001
84HRS1.01
Public Service Commission
MISSOURI

Missouri Public
Service Commission

FILED DEC 01 2000

Issued: October 2, 2000

Effective: December 1, 2000

By JAN NEWTON, President-Missouri
Southwestern Bell Telephone Company
St. Louis, Missouri

No supplement to this tariff will be issued except for the purpose of canceling this tariff.

MISSOURI PORTION-FORT SCOTT, KANSAS, EXCHANGE
6th Revised Sheet 1.01
Replacing 5th Revised Sheet 1.01

SOUTHWESTERN BELL TELEPHONE COMPANY
LOCAL EXCHANGE TARIFF

RECEIVED

DEC 4 1992

MO. PUBLIC SERVICE COMM.

II. RATES-(Continued)

RT)

CANCELLED

DEC 01 2000

By *Jm Qs 1.01*
Public Service Commission
MISSOURI

FILED

JAN 21 1993

~~MO. PUBLIC SERVICE COMM.~~

Issued: DEC 07 1992

Effective: ~~JAN 07 1993~~
JAN 21 1993

By A. D. ROBERTSON, Assistant Vice President-External Affairs
Southwestern Bell Telephone Company
St. Louis, Missouri

P.S.C. Mo. - No. 17

Missouri Portion-

Southwestern Bell Telephone, L.P.
d/b/a AT&T Missouri

Fort Scott, Kansas Exchange
6th Revised Sheet 1.02
Replacing 5th Revised Sheet 1.02

LOCAL EXCHANGE TARIFF

II. RATES (cont'd)

	Maximum Rates	
	<u>Business</u>	<u>Residence</u>
1. Flat Rate Service		
One-Party	\$17.60(CR)	\$9.53(CR)
Lifeline	N/A	(1)
	<u>USOC</u>	<u>Monthly Rate</u>
Urban Mileage Charge, per line	1LS1H	\$4.36
	<u>USOC</u>	<u>Monthly Rate</u>
Urban Mileage Charge, per line	XUDV3	\$3.26

- (1) A customer eligible under established criteria can receive a discount from his or her bill for residential essential local telecommunications services, in accordance with P.S.C. Mo. – No. 24, Local Exchange Tariff, Section 1.2.2.E, regarding Lifeline Service.

Issued: October 17, 2006

Effective: December 1, 2006

By CINDY BRINKLEY, President – Missouri
St. Louis, Missouri

No Supplement to this tariff will be issued except for the purpose of canceling this tariff.

Missouri Portion-
Fort Scott, Kansas Exchange
5th Revised Sheet 1.02
Replacing 4th Revised Sheet 1.02

LOCAL EXCHANGE TARIFF

II. RATES (cont'd)

	Maximum Rates	
	<u>Business</u>	<u>Residence</u>
1. Flat Rate Service		
One-Party Lifeline	\$17.56(CR) N/A	\$9.51(CR) (1)
	<u>USOC</u>	<u>Monthly Rate</u>
Urban Mileage Charge, per line	1LS1H	\$4.36(CR)
	<u>USOC</u>	<u>Monthly Rate</u>
Urban Mileage Charge, per line	XUDV3	\$3.26(CR)

(1) A customer eligible under established criteria can receive a discount from his or her bill for residential essential local telecommunications services, in accordance with P.S.C. Mo. – No. 24, Local Exchange Tariff, Section 1.2.2.E, regarding Lifeline Service.

Issued: October 17, 2005

Effective: December 1, 2005

By CINDY BRINKLEY, President-SBC Missouri
Southwestern Bell Telephone, L.P., d/b/a SBC Missouri
St. Louis, Missouri

Cancelled

December 1, 2006

Missouri Public
Service Commission

Filed

Missouri Public
Service Commission

No Supplement to this tariff will be issued except for the purpose of canceling this tariff.

Missouri Portion-
Fort Scott, Kansas Exchange
4th Revised Sheet 1.02
Replacing 3rd Revised Sheet 1.02

(RT)

LOCAL EXCHANGE TARIFF

II. RATES (cont'd)

		Maximum Rates	
		<u>Business</u>	<u>Residence</u>
(CT)(CR)	1. Flat Rate Service		
	One-Party Lifeline	\$17.91 N/A	\$9.70 (1)
		<u>USOC</u>	<u>Monthly Rate</u>
	Urban Mileage Charge, per line	1LS1H	\$4.45
		<u>USOC</u>	<u>Monthly Rate</u>
	Urban Mileage Charge, per line	XUDV3	\$3.33

CANCELLED

DEC 01 2005

By *547 RG 1.02*
Public Service Commission
MISSOURI

- (AT) (1) A customer eligible under established criteria can receive a discount from his or her bill for residential essential local telecommunications services, in accordance with P.S.C. Mo. – No. 24, Local Exchange Tariff, Section 1.2.2.E, regarding Lifeline Service.

Issued: April 1, 2005

Effective: May 1, 2005

By CINDY BRINKLEY, President-SBC Missouri
Southwestern Bell Telephone, L.P., d/b/a SBC Missouri
St. Louis, Missouri

TO-1998-0329

**FILED
MO PSC**

No Supplement to this tariff will be issued except for the purpose of canceling this tariff.

Missouri Portion-
Fort Scott, Kansas, Exchange
3rd Revised Sheet 1.02
Replacing 2nd Revised Sheet 1.02

SOUTHWESTERN BELL TELEPHONE COMPANY
LOCAL EXCHANGE TARIFF

II. RATES (cont'd)

	Maximum Rates	
	<u>Business</u>	<u>Residence</u>
1. Flat Rate Service		
One-Party Lifeline(1)	\$17.91(CR) N/A	\$9.70(CR) 6.20(CR)
	<u>USOC</u>	<u>Monthly Rate</u>
Urban Mileage Charge, per line	1LS1H	\$4.45(CR)
	<u>USOC</u>	<u>Monthly Rate</u>
Urban Mileage Charge, per line	XUDV3	\$3.33(CR)

CANCELLED

MAY 01 2005
By 44hRS 1.02
Public Service Commission
MISSOURI

(1) See P.S.C. Mo. – No. 24, Local Exchange Tariff, Section 1.2.2.E, for description, terms and conditions related to Lifeline Service.

Issued: October 15, 2004

Effective: December 1, 2004

By CINDY BRINKLEY, President-SBC Missouri
Southwestern Bell Telephone, L.P., d/b/a SBC Missouri
St. Louis, Missouri

**FILED
MO PSC**

No Supplement to this tariff will be issued except for the purpose of canceling this tariff.

Missouri Portion-
Fort Scott, Kansas, Exchange
2nd Revised Sheet 1.02
Replacing 1st Revised Sheet 1.02
Missouri Public

SOUTHWESTERN BELL TELEPHONE COMPANY Service Commission
LOCAL EXCHANGE TARIFF

REC'D MAY 10 2004

II. RATES (cont'd)

		Maximum Rates	
		Business	Residence
(AT)	1. Flat Rate Service		
	One-Party Lifeline(1)	\$18.40 N/A	\$9.97 6.47
		<u>USOC</u>	<u>Monthly Rate</u>
	Urban Mileage Charge, per line	1LS1H	\$4.57
		<u>USOC</u>	<u>Monthly Rate</u>
	Urban Mileage Charge, per line	XUDV3	\$3.42

CANCELLED

DEC 01 2004
By *3rd RSI.02*
Public Service Commission
MISSOURI

(AT) (1) See P.S.C. Mo. – No. 24, Local Exchange Tariff, Section 1.2.2.E, for description, terms and conditions related to Lifeline Service.

Issued: May 10, 2004 Effective: June 9, 2004

By CINDY BRINKLEY, President-SBC Missouri
Southwestern Bell Telephone, L.P., d/b/a SBC Missouri St. Louis, Missouri
Missouri Public Service Commission

FILED JUN 09 2004

No Supplement to this tariff will be issued except for the purpose of canceling this tariff.

Missouri Portion-
Fort Scott, Kansas, Exchange
1st Revised Sheet 1.02
Replacing Original Revised Sheet 1.02

SOUTHWESTERN BELL TELEPHONE COMPANY
LOCAL EXCHANGE TARIFF

Missouri Public

REC'D OCT 15 2003

II. RATES (cont'd)

	<u>Maximum Rates</u>		<u>Commission</u>
	<u>Business</u>	<u>Residence</u>	
1. Flat Rate Service			
One-Party	\$18.40(CR)	\$9.97	
	<u>USOC</u>	<u>Monthly Rate</u>	
Urban Mileage Charge, per line	1LS1H	\$4.57	
	<u>USOC</u>	<u>Monthly Rate</u>	
Urban Mileage Charge, per line	XUDV3	\$3.42	

CANCELLED

JUN 09 2004
By *Cindy Brinkley*
Public Service Commission
MISSOURI

Issued: October 15, 2003

Effective: December 1, 2003

By CINDY BRINKLEY, President-SBC Missouri
Southwestern Bell Telephone, L.P., d/b/a SBC Missouri
St. Louis, Missouri

Missouri Public
Service Commission

FILED DEC 01 2003

No Supplement to this tariff will be issued except for the purpose of canceling this tariff.

Missouri Portion-
Fort Scott, Kansas, Exchange
Original Sheet 1.02

SOUTHWESTERN BELL TELEPHONE COMPANY
LOCAL EXCHANGE TARIFF

Missouri Public
Service Commission

REC'D OCT 15 2002

(MT) II. RATES (cont'd)

	Maximum Rates	
	<u>Business</u>	<u>Residence</u>
1. Flat Rate Service		
One-Party	\$18.41(CR)	\$9.97(CR)
	<u>USOC</u>	<u>Monthly Rate</u>
Urban Mileage Charge, per line	1LS1H	\$4.57(CR)
	<u>USOC</u>	<u>Monthly Rate</u>
(MT) Urban Mileage Charge, per line	XUDV3	\$3.42(CR)

CANCELLED

DEC 01 2003
15 + R 51.02
Missouri Public Service Commission
MISSOURI

Missouri Public
Service Commission

FILED DEC 01 2002

Issued: October 15, 2002

Effective: December 1, 2002

By CINDY BRINKLEY, President-Missouri
Southwestern Bell Telephone, L.P., d/b/a Southwestern Bell Telephone Company
St. Louis, Missouri

LEGEND

N

CITY

EXCHANGE AREA BOUNDARY

BASE RATE AREA BOUNDARY

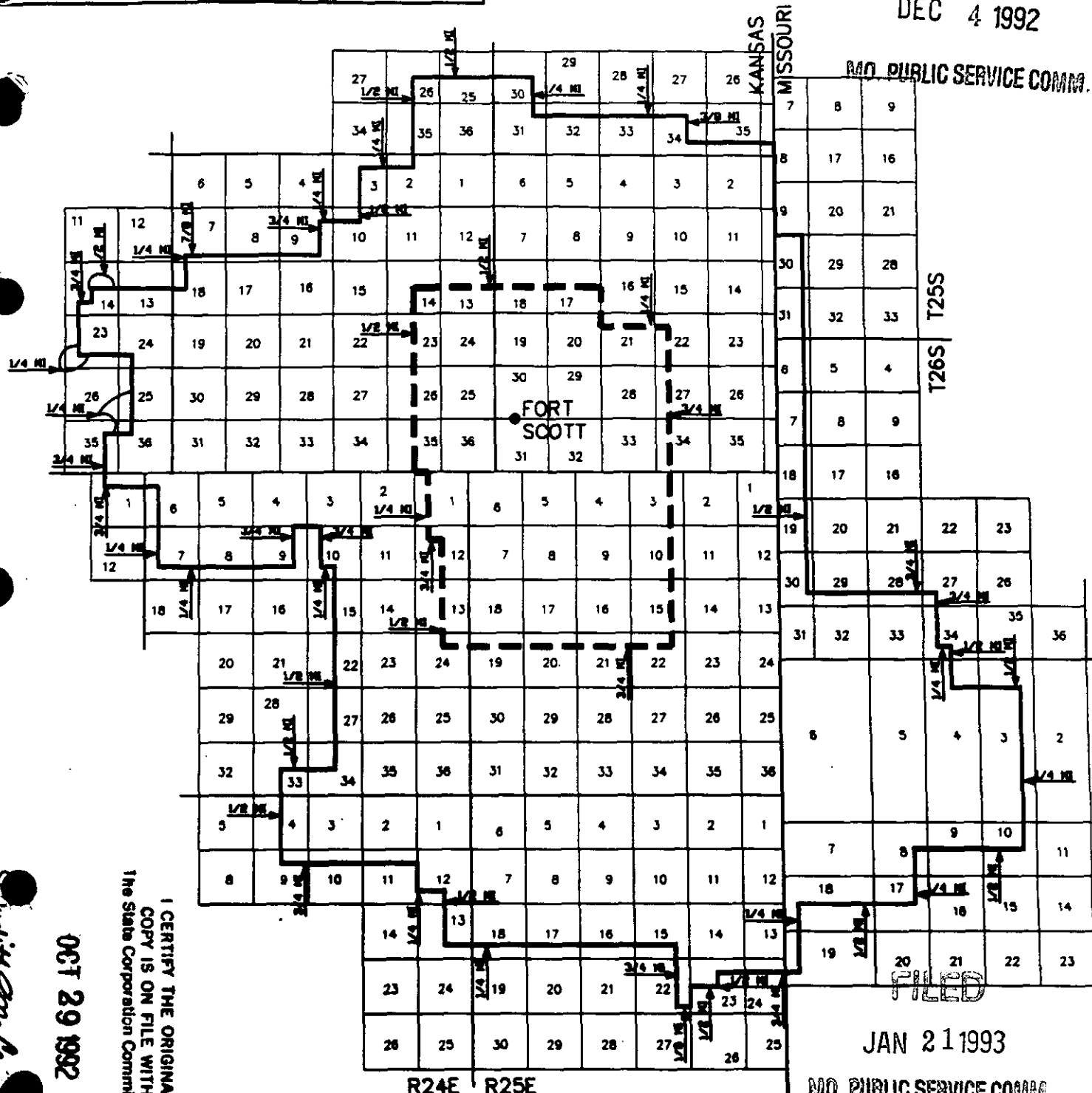
SCALE: 3/8" = 1 MILE

EXCHANGE AREA MAP

RECEIVED

DEC 4 1992

MO. PUBLIC SERVICE COMM.



I CERTIFY THE ORIGINAL COPY IS ON FILE WITH The State Corporation Commission

OCT 29 1992

Quill McComel
 EXECUTIVE DIRECTOR

JAN 21 1993
 MO. PUBLIC SERVICE COMM.
 JAN 21 1993

EFFECTIVE SEPT. 16, 1992 THE ONLY GRADE OF SERVICE AVAILABLE IS ONE PARTY

ISSUED: AUG 18 1992

EFFECTIVE: SEP 16 1992

BY: J.W. CALLAWAY, President - Kansas Division
 Southwestern Bell Telephone Company
 Topeka, Kansas

SVE1317

Commission Docket Number **166856-U**

FILED AUG 20 1992

THE STATE CORPORATION COMMISSION
 OF KANSAS

Quill McComel
 SECRETARY

CANCELLED
 June 29, 2007
 TO-2002-185
 Missouri Public
 Service Commission

NO SUPPLEMENT TO THIS TARIFF WILL BE ISSUED EXCEPT FOR THE PURPOSE OF CANCELING THIS TARIFF.

P. S. C. Mo. No. 17

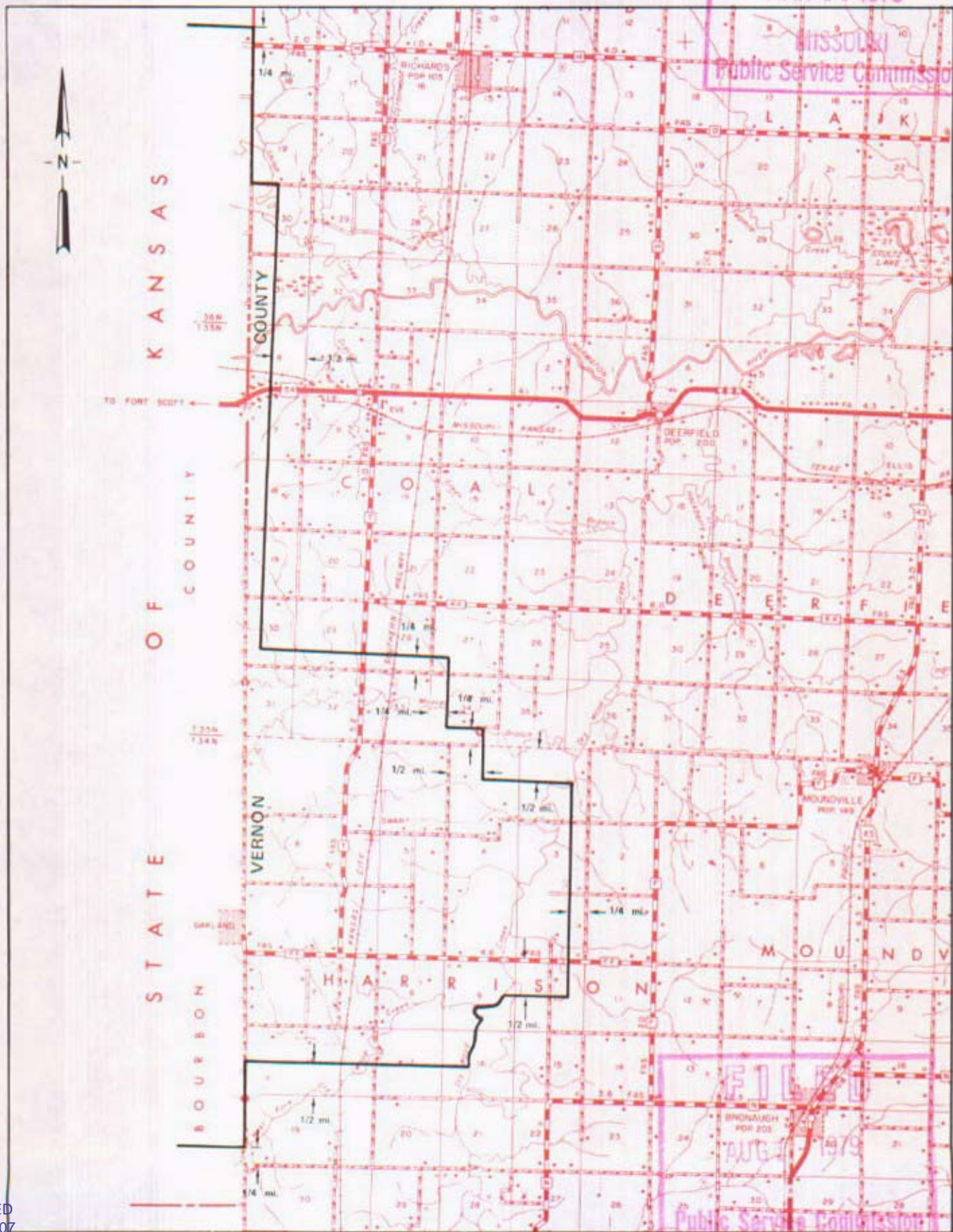
Missouri Portion
Ft. Scott, Kansas

RECEIVED
1st REVISED SHEET 2
REPLACING ORIGINAL SHEET 2

EXCHANGE AND BASE RATE AREA MAP

MAR 30 1979

MISSOURI
Public Service Commission



T36N
T35N

T35N
T34N

R34W | R33W

R33W | R32W

By R. R. SHOCKLEY, Vice President, Missouri
Southwestern Bell Telephone Company

AUG 1 - 1979

CANCELLED
June 29, 2007
TO-2002-185
Missouri Public
Service Commission

SBC PSC MO #17
Frankford, Missouri
Original Sheet 2
Replacing Western Light & Telephone
Company's P.S.C. Mo. No. 6
Original Sheet 5
Pike County

Non-Scannable Map

(Is viewable in the Data Center
200 Madison Street, 1st Floor
Jefferson City MO)

NO SUPPLEMENT TO THIS TARIFF WILL BE ISSUED EXCEPT FOR THE PURPOSE OF CANCELING THIS TARIFF.

P. S. C. Mo. No. 17

EXCHANGE AREA MAP

Frankford, Missouri
7th REVISED SHEET 3
REPLACING 6th REVISED SHEET 3

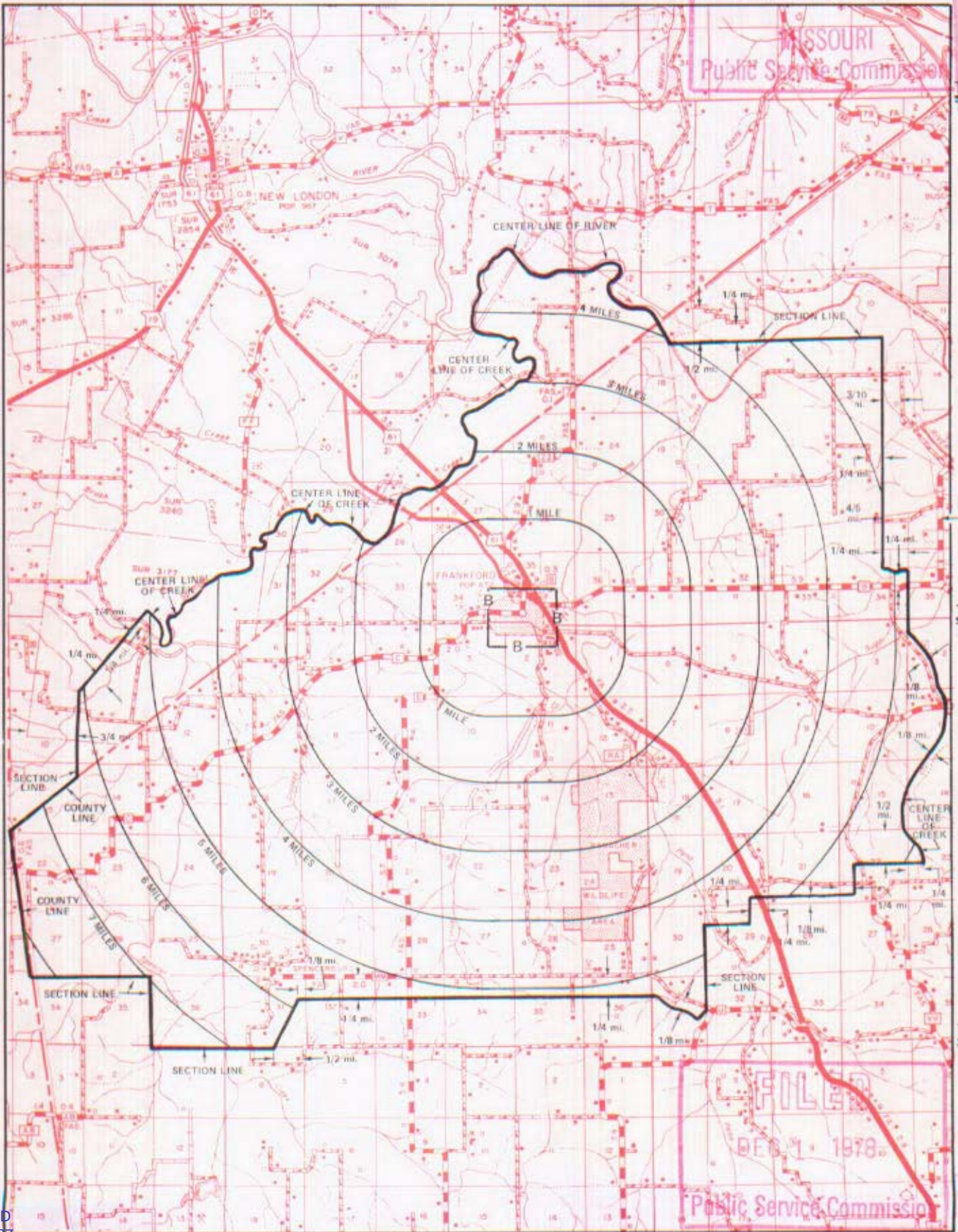
FEB 14 1977

MISSOURI
Public Service Commission

T56N
T55N

T55N
T54N

T54N
T53N



FILED
DEC 1 1978
Public Service Commission

R5W|R4W

R4W|R3W

By R. R. SHOCKLEY, Vice President, Missouri
Southwestern Bell Telephone Company

DEC 1 1978

CANCELLED
June 29, 2007
TO-2002-185
Missouri Public
Service Commission

February 15, 1977

Effective

SBC PSC MO #17
Fredericktown, Missouri
2nd Revised Sheet 2
Replacing 1st Revised Sheet 2

Non-Scannable Map

(Is viewable in the Data Center
200 Madison Street, 1st Floor
Jefferson City MO)

SBC PSC MO #17
Fredericktown, Missouri
18th Revised Sheet 3
Replacing 17th Revised Sheet 3

Non-Scannable Map

(Is viewable in the Data Center
200 Madison Street, 1st Floor
Jefferson City MO)

SBC PSC MO #17
Freeburg, Missouri
Original Sheet 2
Replacing Original Sheet 2
Of the Ozark Central Telephone Company
P.S.C. Mo. No. 1

Non-Scannable Map

(Is viewable in the Data Center
200 Madison Street, 1st Floor
Jefferson City MO)

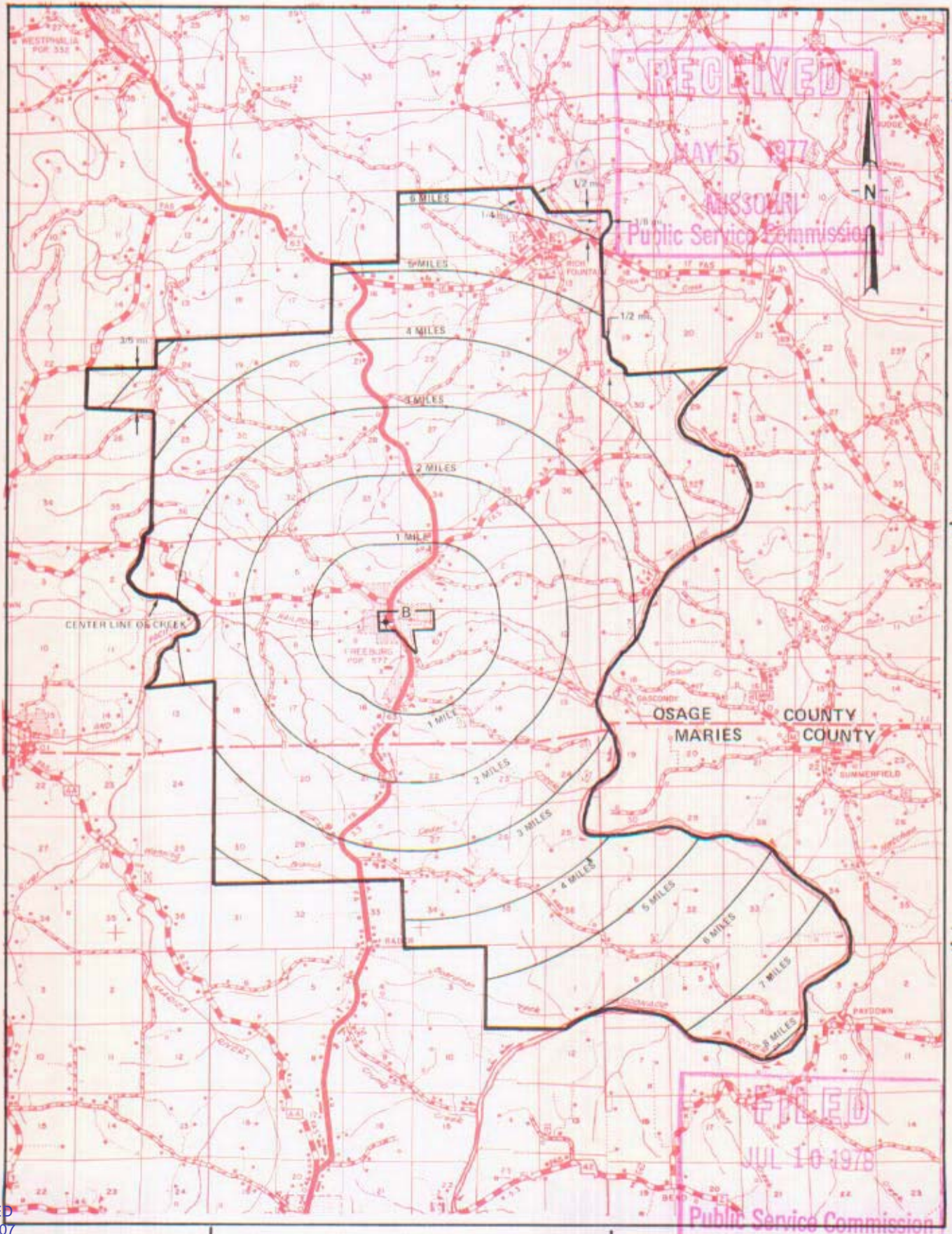
NO SUPPLEMENT TO THIS TARIFF WILL BE ISSUED EXCEPT FOR THE PURPOSE OF CANCELING THIS TARIFF.

P. S. C. Mo. No. 17

Freeburg, Missouri

EXCHANGE AREA MAP

7th REVISED SHEET 3 REPLACING 6th REVISED SHEET 3



T43N
T42N

T42N
T41N

T41N
T40N

R11W | R10W

R10W | R9W

By R. R. SHOCKLEY, Vice President, Missouri
Southwestern Bell Telephone Company
St. Louis, Missouri

CANCELLED
June 29, 2007
TO-2002-185
Missouri Public
Service Commission

Issued: MAY 10 1977

Effective: JUL 10 1978

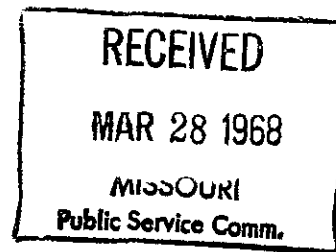
No supplement to this tariff will be issued except for the purpose of canceling this tariff.

P. S. C. Mo.-No. 17

FRUITLAND, MISSOURI
1ST REVISED SHEET 2
(REPLACING ORIGINAL SHEET 2)

This exchange is included in the Fair Grove Exchange.

For all rates and charges refer to the Fair Grove Exchange.



FILED

APR 30 1968

PUBLIC SERVICE COMMISSION

Issued: March 30, 1968

Effective: April 30, 1968

By R. R. SHOCKLEY, Vice President and General Manager
Southwestern Bell Telephone Company
St. Louis, Missouri

CANCELLED
June 29, 2007
TO-2002-185
Missouri Public
Service Commission

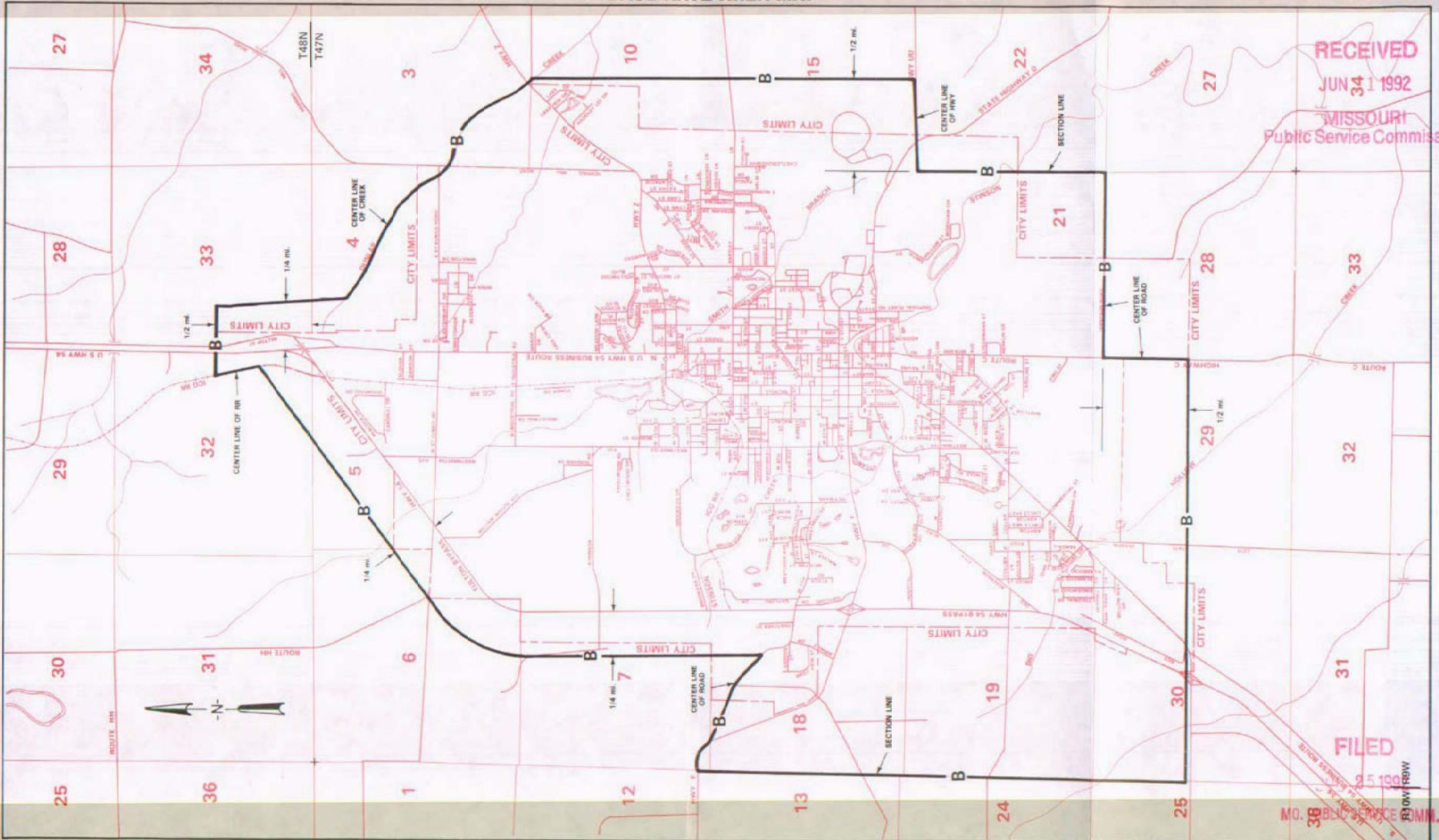
CANCELLED
June 29, 2007
TO-2002-185
Missouri Public
Service Commission

NO SUPPLEMENT TO THIS TARIFF WILL
BE ISSUED EXCEPT FOR THE PURPOSE OF
CANCELING THIS TARIFF.

P. S. C. Mo. No. 17
BASE RATE AREA MAP

Fulton, Missouri

4th REVISED SHEET 2
REPLACING 3rd REVISED SHEET 2



RECEIVED
JUN 30 1992
MISSOURI
Public Service Commission

FILED
JUN 25 1992
MO. PUBLIC SERVICE COMMISSION

Issued: JUN 05 1992

By R. D. BARRON, PRESIDENT, MISSOURI DIVISION
Southwestern Bell Telephone Company
St. Louis, Missouri

Effective: JUL 25 1992

SBC Missouri
Base Rate Area Map
Fulton
PSC MO No. 17
3rd Revised Sheet 2

Non-Scannable Map

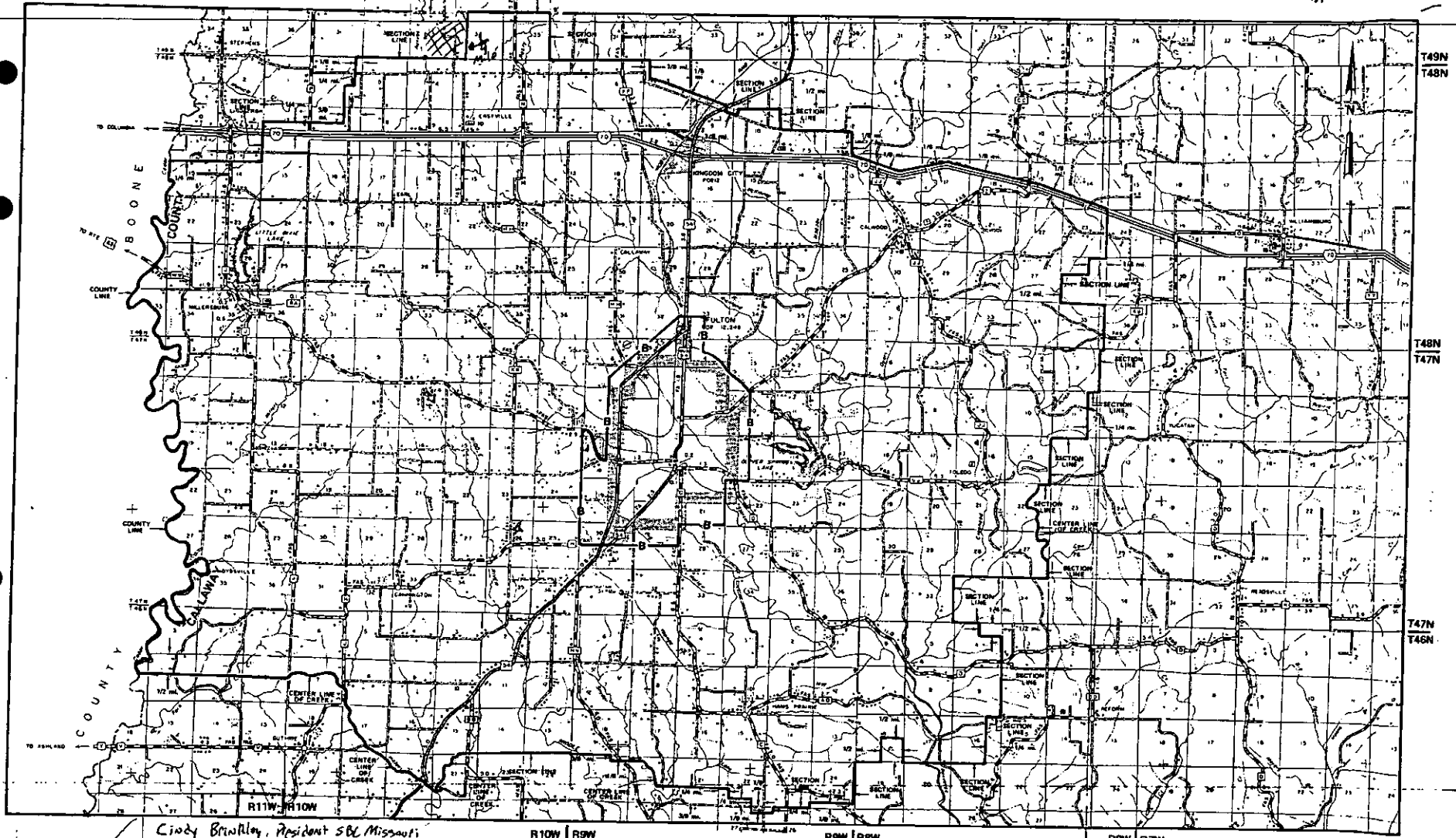
(Viewable in the Data Center
located at:
200 Madison Street, 1st Floor
Jefferson City MO)

CANCELLED
June 29, 2007
TO-2002-185
Missouri Public
Service Commission

NO SUPPLEMENT TO THIS TARIFF WILL
BE ISSUED EXCEPT FOR THE PURPOSE OF
CANCELING THIS TARIFF.

P. S. C. Mo. No. 17
EXCHANGE AREA MAP

Fulton, Missouri
7th REVISED SHEET 3
REPLACING 1st REVISED SHEET 3



Issued: 4-1-05

Cindy Brinkley, Resident SBC Missouri
Southwestern Bell Telephone, L.P. d/b/a SBC Missouri
St. Louis, Missouri

FILED
Effective: 5-1-05
NO PSC

CANCELLED

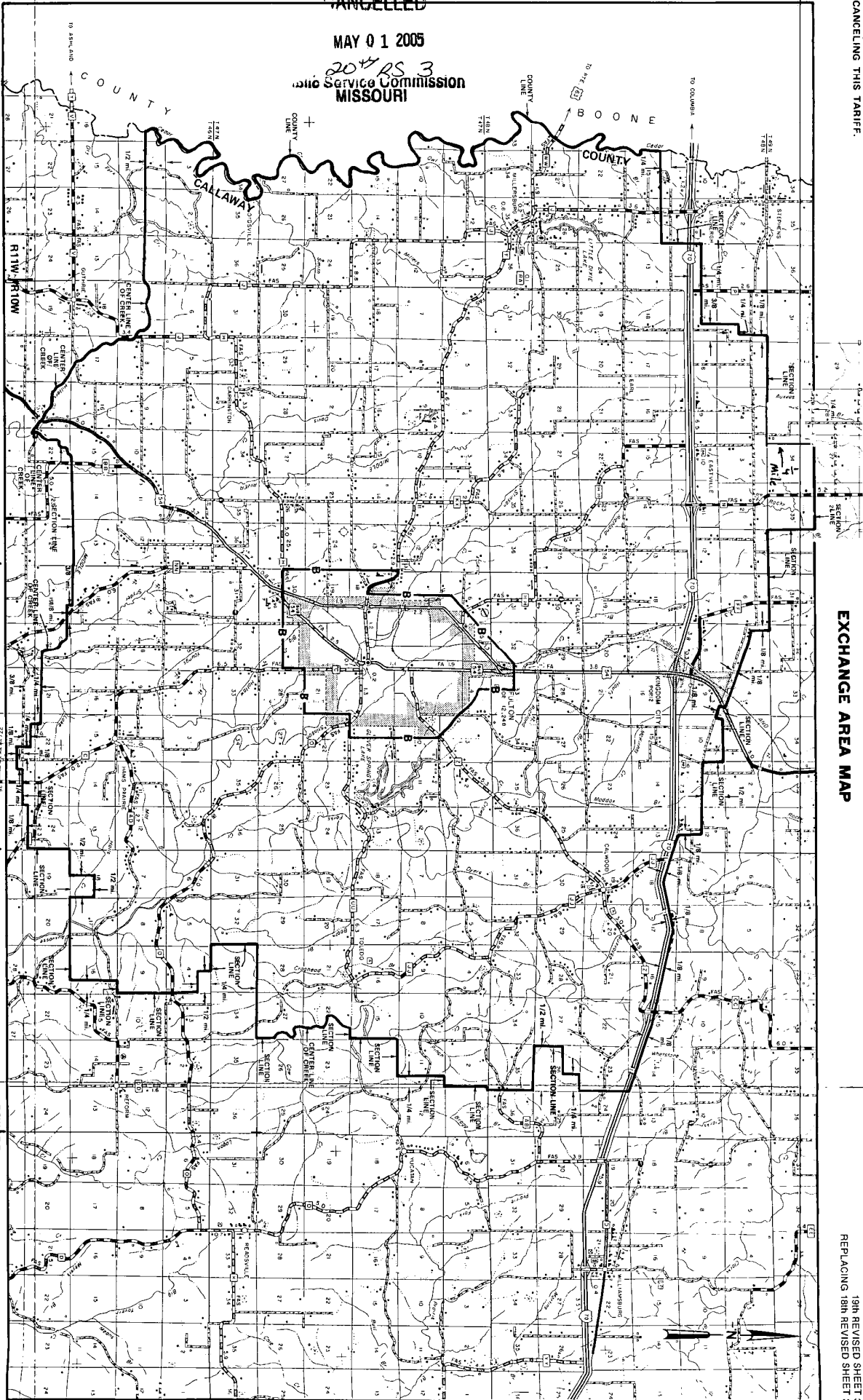
MAY 01 2005

204 RS 3
Public Service Commission
MISSOURI

NO SUPPLEMENT TO THIS TARIFF WILL
BE ISSUED EXCEPT FOR THE PURPOSE OF
CANCELING THIS TARIFF.

P. S. C. Mo. No. 17
EXCHANGE AREA MAP

Fulton, Missouri
19th REVISED SHEET 3
REPLACING 18th REVISED SHEET 3



Issued: December 24, 1997

By PRISCILLA HILL-ARDON, President - Missouri
Southwestern Bell Telephone Company
St. Louis, Missouri

R10W R9W

R9W R8W

R8W R7W

Effective: March 6, 1998

T47N
T46N

T48N
T47N

T49N
T48N

NO SUPPLEMENT TO THIS TARIFF WILL BE PERMITTED FOR THE PURPOSE OF CANCELING THIS TARIFF.

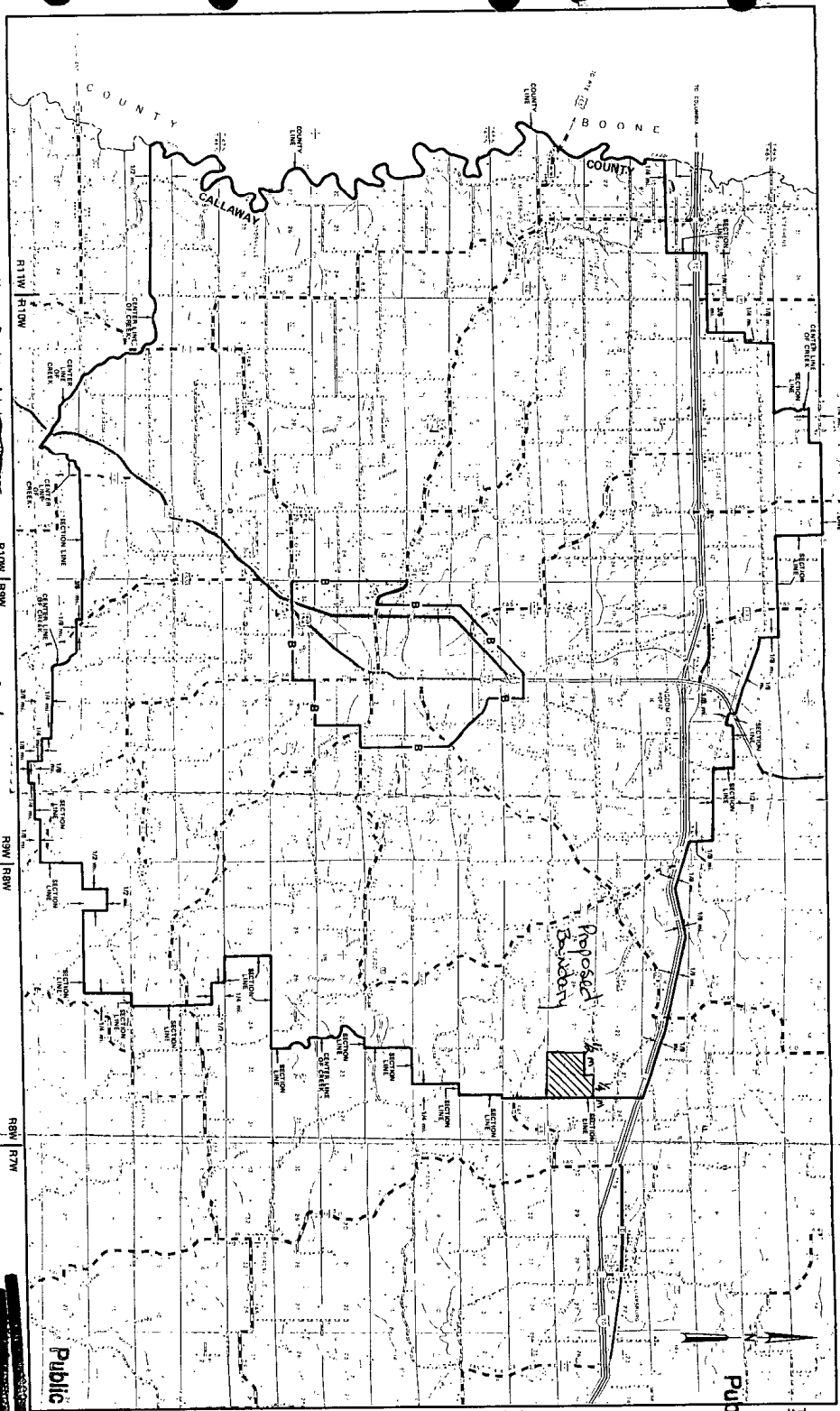
P. S. C. Mo. No. 17
EXCHANGE AREA MAP

Fulton, Missouri
19
REPLACING SHEET 3
17

RECEIVED

DEC 24 1997

MISSOURI
Public Service Commission



CANCELLED

MAY 01 2005
By *JKRS*
Public Service Commission
MISSOURI

FILED

MAR 06 1998

MISSOURI
Public Service Commission

MAR 06 1998

DEC 06 1997
DEC 24 1997

Southwestern Bell Telephone Company
St. Louis, Missouri

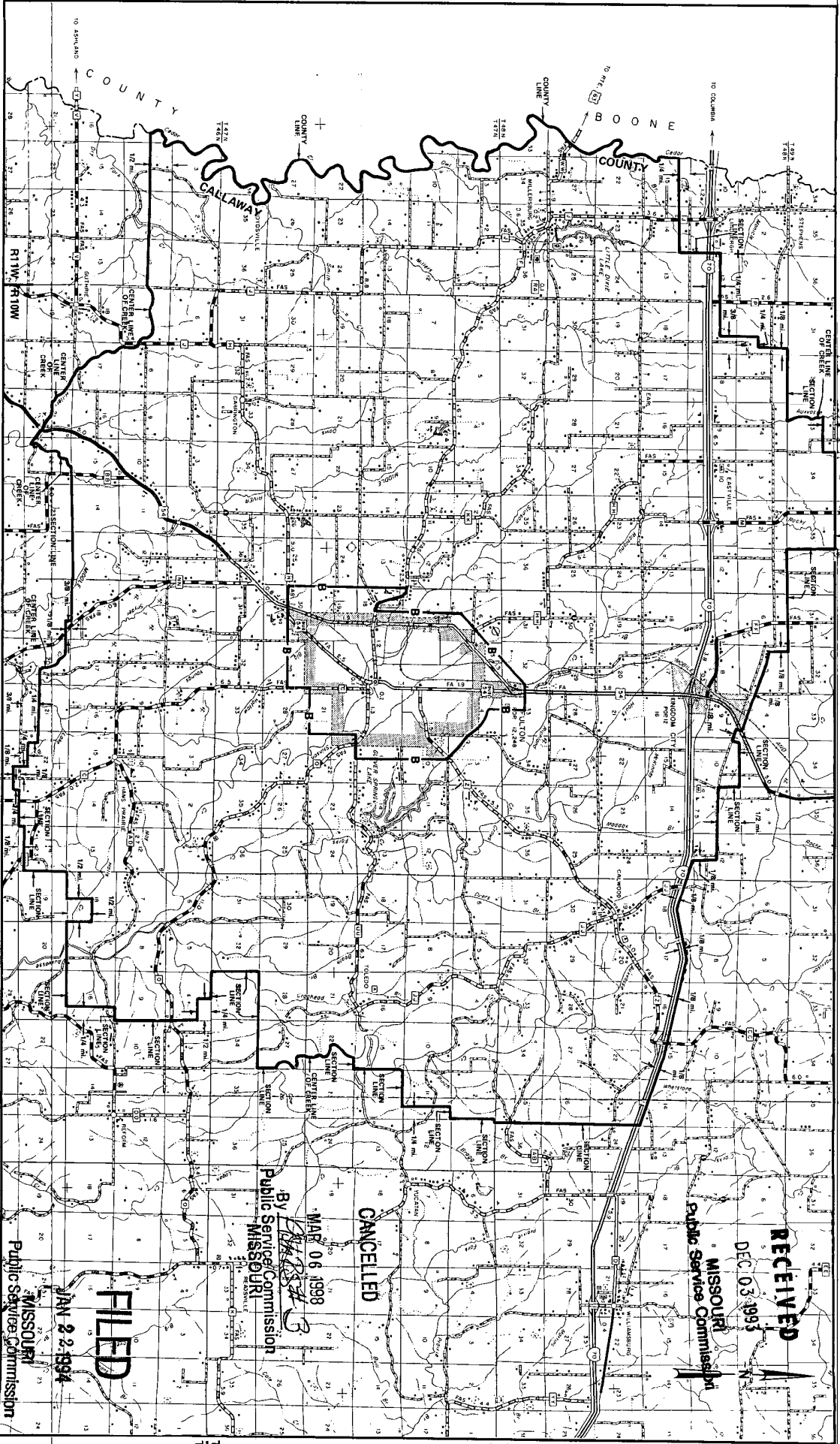
Priscilla Hill Ardon

Effective:

NO SUPPLEMENT TO THIS TARIFF WILL BE ISSUED EXCEPT FOR THE PURPOSE OF CANCELING THIS TARIFF.

P. S. C. Mo. No. 17
EXCHANGE AREA MAP

Fulton, Missouri
18th REVISED SHEET 3
REPLACING 17th REVISED SHEET 3



By M. H. SCHULTZ, Division Manager-Regulatory & Industry Relations
Southwestern Bell Telephone Company
St. Louis, Missouri

R10W R9W

R9W R8W

R8W R7W

Effective: JAN 22 1994

SBC Missouri
Exchange Area Map
Fredericktown
PSC MO No. 17
17th Revised Sheet 3

Non-Scannable Map

(Viewable in the Data Center
located at:
200 Madison Street, 1st Floor
Jefferson City MO)