

No supplement to this tariff will be issued except for the purpose of canceling this tariff.

P.S.C. Mo. No. 17

RAYVILLE, MISSOURI
1ST REVISED SHEET 1
REPLACING ORIGINAL SHEET 1

SOUTHWESTERN BELL TELEPHONE COMPANY
LOCAL EXCHANGE TARIFF
SUPERSEDING ALL TARIFFS PREVIOUSLY ISSUED

RECEIVED
DEC 18 1961
MISSOURI
Public Service Comm.

This exchange is included in the Excelsior Springs and Richmond exchanges. For all rates and charges refer to the Excelsior Springs and Richmond exchanges.

FILED

DEC 31 1961

PUBLIC SERVICE COMMISSION

Issued under order of Missouri Public Service Commission in Telephone Authority No. 357.

Issued: December 14, 1961

Effective: December 31, 1961

By F. B. HUNT, Vice President and General Manager
Southwestern Bell Telephone Company
St. Louis, Missouri

CANCELLED
June 29, 2007
TO-2002-185
Missouri Public
Service Commission

No supplement to this tariff will be issued except for the purpose of canceling this tariff

REPUBLIC, MISSOURI
4th Revised Sheet 2
Replacing 3rd Revised Sheet 2

BASE RATE AREA MAP

THIS AREA IS INCLUDED IN THE SPRINGFIELD METROPOLITAN EXCHANGE.

RECEIVED

MAY 25 1993

MO. PUBLIC SERVICE COMM.

FILED

JUL 07 1993

MO. PUBLIC SERVICE COMM.

Issued: **MAY 25 1993**

Effective: **JUL 07 1993**

By A. D. ROBERTSON, Assistant Vice President-External Affairs
Southwestern Bell Telephone Company
St. Louis, Missouri

No supplement to this
tariff will be issued
except for the purpose
of canceling this tariff

REPUBLIC, MISSOURI
19th Revised Sheet 3
Replacing 18th Revised Sheet 3

EXCHANGE AREA MAP

THIS AREA IS INCLUDED IN THE SPRINGFIELD METROPOLITAN EXCHANGE.

RECEIVED

MAY 25 1993

MO. PUBLIC SERVICE COMM.

FILED

JUL 07 1993

MO. PUBLIC SERVICE COMM.

Issued: **MAY 25 1993**

Effective: **JUL 07 1993**

By A. D. ROBERTSON, Assistant Vice President-External Affairs
Southwestern Bell Telephone Company
St. Louis, Missouri

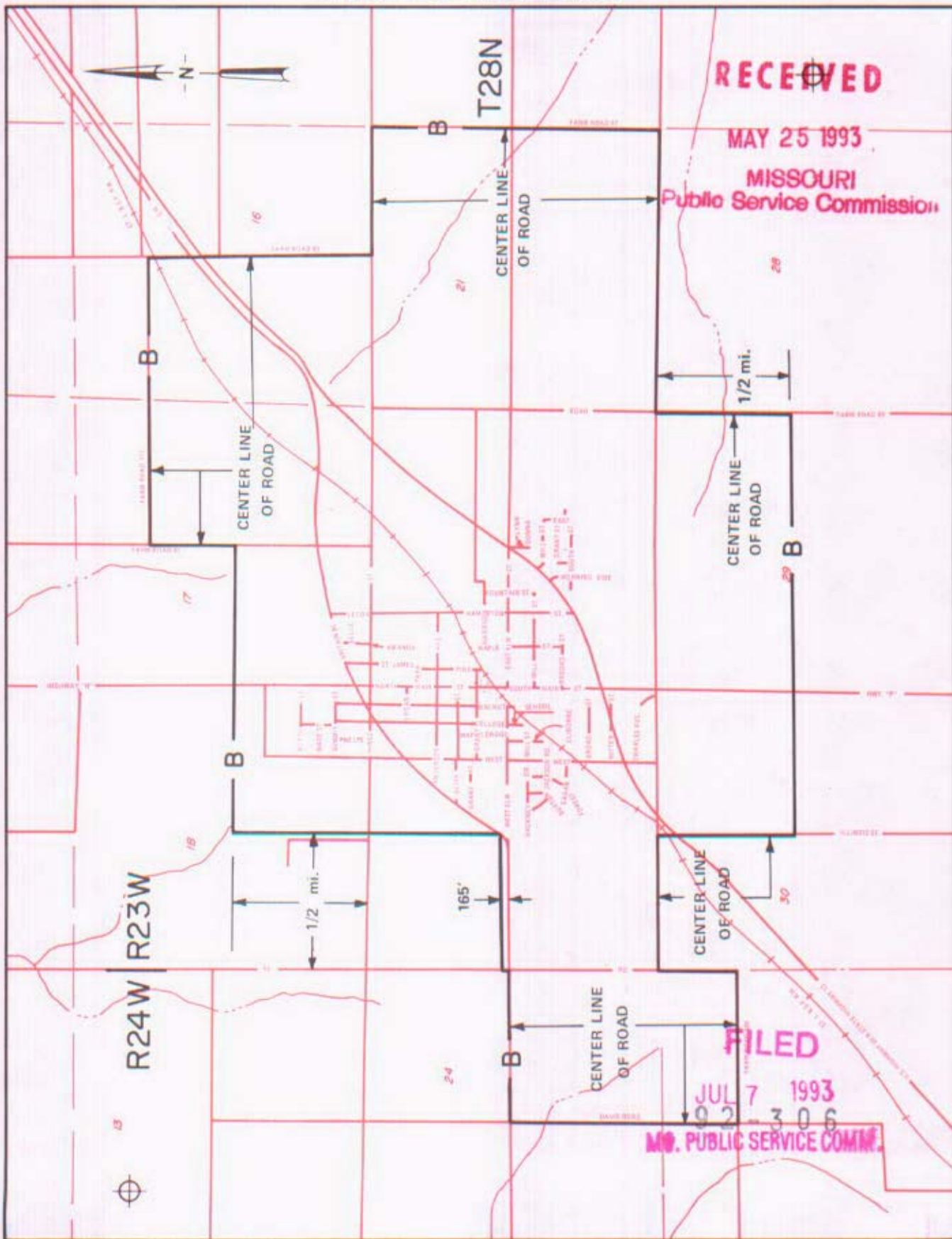
NO SUPPLEMENT TO THIS TARIFF WILL BE ISSUED EXCEPT FOR THE PURPOSE OF CANCELING THIS TARIFF.

SPRINGFIELD METROPOLITAN EXCHANGE

Republic Zone

ORIGINAL SHEET 4-A

P. S. C. Mo. No. 17 BASE RATE AREA MAP



By A. D. ROBERTSON, Assistant Vice President - External Affairs
Southwestern Bell Telephone Company
St. Louis, Missouri

Issued: MAY 25, 1993

Effective: JULY 7, 1993

CANCELLED
June 29, 2007
TO-2002-185
Missouri Public
Service Commission

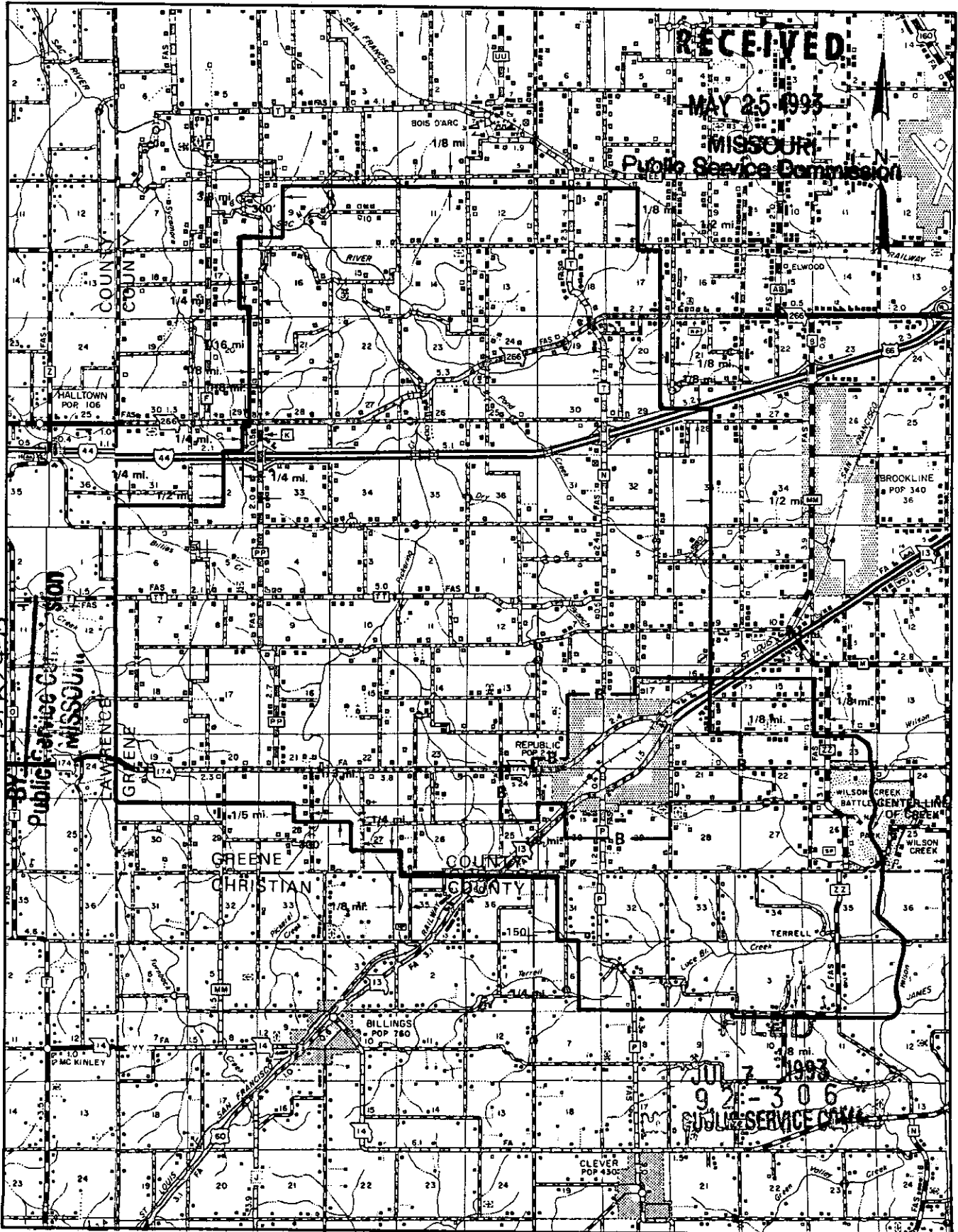
NO SUPPLEMENT TO THIS TARIFF WILL BE ISSUED EXCEPT FOR THE PURPOSE OF CANCELING THIS TARIFF.

SPRINGFIELD METROPOLITAN EXCHANGE

Republic Zone

ORIGINAL SHEET 4-B

P. S. C. Mo. No. 17 ZONE AREA MAP



RECEIVED

MAY 25 1993

MISSOURI
Public Service Commission

CANCELLED

DEC 04 20 1993

T29N
T28N

T28N
T27N

FILED

JUL 7 1993

92-306
PUBLIC SERVICE COMMISSION

R25W | R24W

R24W | R23W

R23W | R22W

By A. D. ROBERTSON, Assistant Vice President - External Affairs
Southwestern Bell Telephone Company
St. Louis, Missouri

Issued: MAY 25, 1993

Effective: JULY 7, 1993

SBC PSC MO #17
Richmond, Missouri
1st Revised Sheet 2
Replacing Original Sheet 2

Non-Scannable Map

(Is viewable in the Data Center
200 Madison Street, 1st Floor
Jefferson City MO)

CANCELLED
June 29, 2007
TO-2002-185
Missouri Public
Service Commission

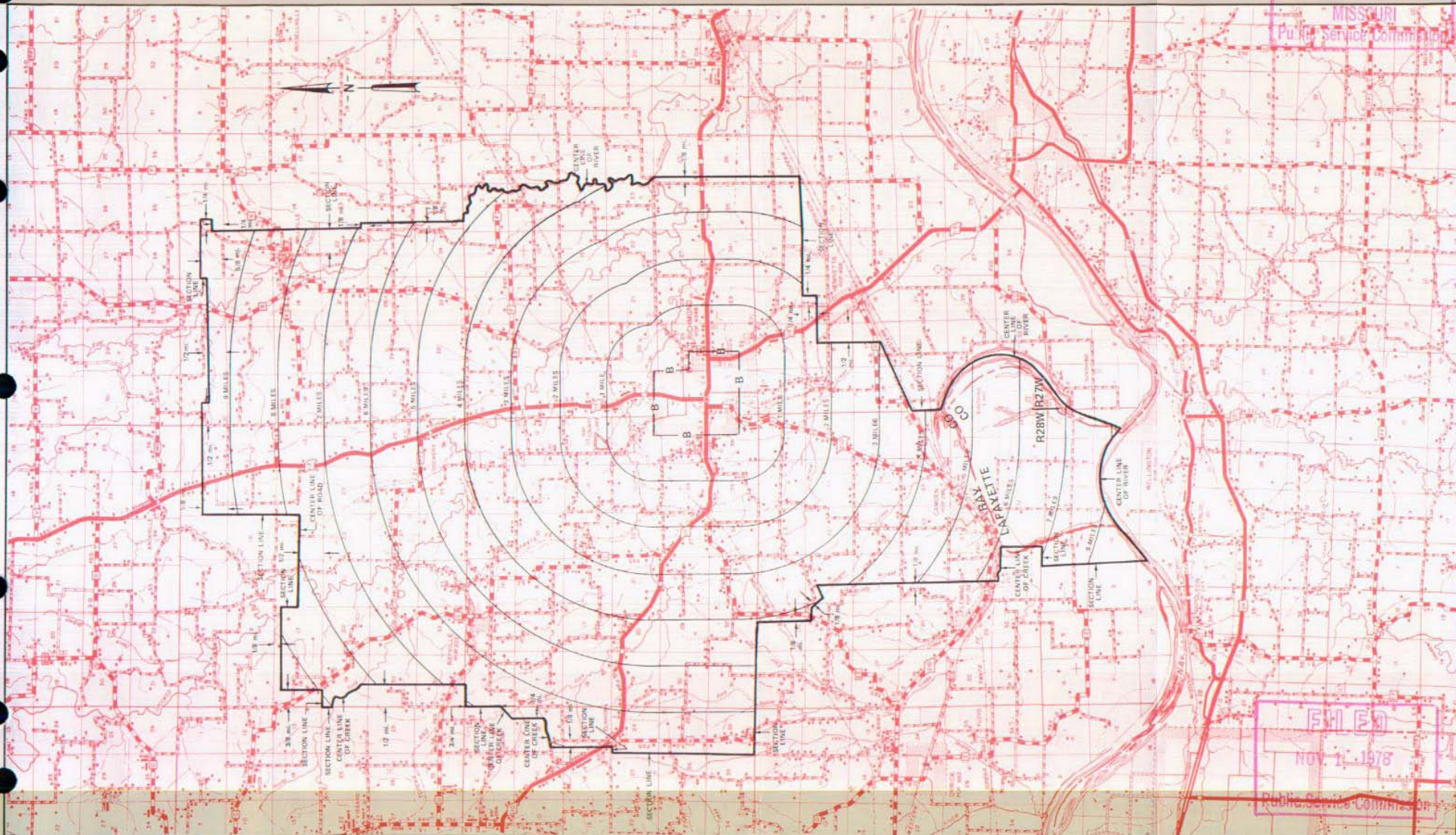
NO SUPPLEMENT TO THIS TARIFF WILL
BE ISSUED EXCEPT FOR THE PURPOSE OF
CANCELING THIS TARIFF.

P. S. C. Mo. No. 17
EXCHANGE AREA MAP

RECEIVED
Richmond, Missouri

9th REVISED SHEET 3
REPLACING 8th REVISED SHEET 3
JUL 11 1977

MISSOURI
Public Service Commission



R27W

R27W

R28W

R28W

T54N
T53N
By R. R. SHOCKLEY, Vice President, Missouri
Southwestern Bell Telephone Company
St. Louis, Missouri

T53N
T52N

T52N
T51N

T51N
T50N

T50N
T49N

NOV 1 - 1978
Effective: _____

Issued: July 11, 1977

FILED
NOV 1 1978
Public Service Commission

NO SUPPLEMENT TO THIS TARIFF WILL BE ISSUED EXCEPT FOR THE PURPOSE OF CANCELING THIS TARIFF.

P. S. C. Mo. No. 17

BASE RATE AREA MAP

Richwoods, Missouri
RECEIVED

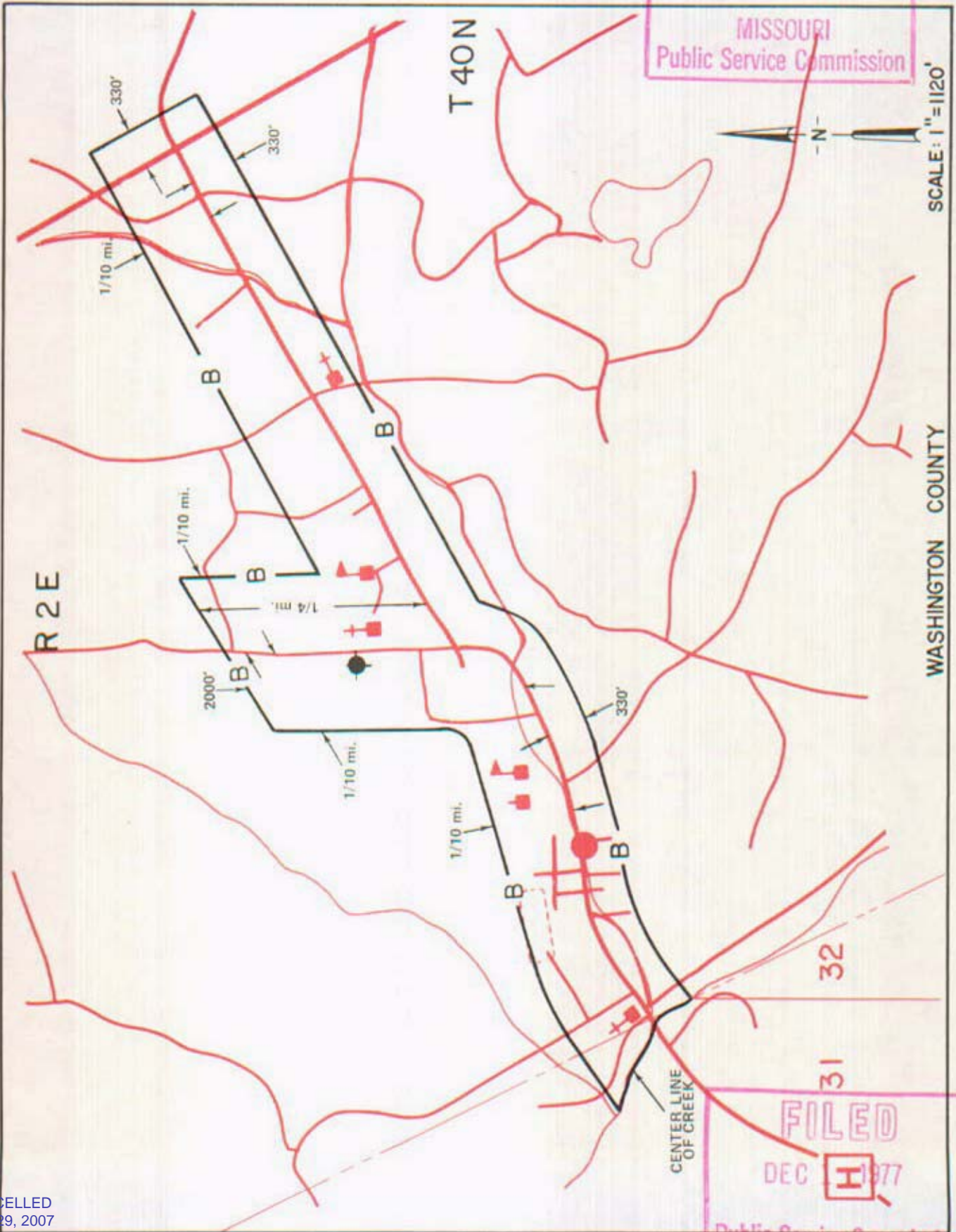
1st REVISED SHEET 2
REPLACING ORIGINAL SHEET 2

MAY 20 1977

MISSOURI
Public Service Commission

SCALE: 1" = 1120'

WASHINGTON COUNTY



CANCELLED
June 29, 2007
TO-2002-185
Missouri Public
Service Commission

By R. R. SHOCKLEY, Vice President, Missouri

Southwestern Bell Telephone

FILED

DEC 1 1977

Public Service Commission

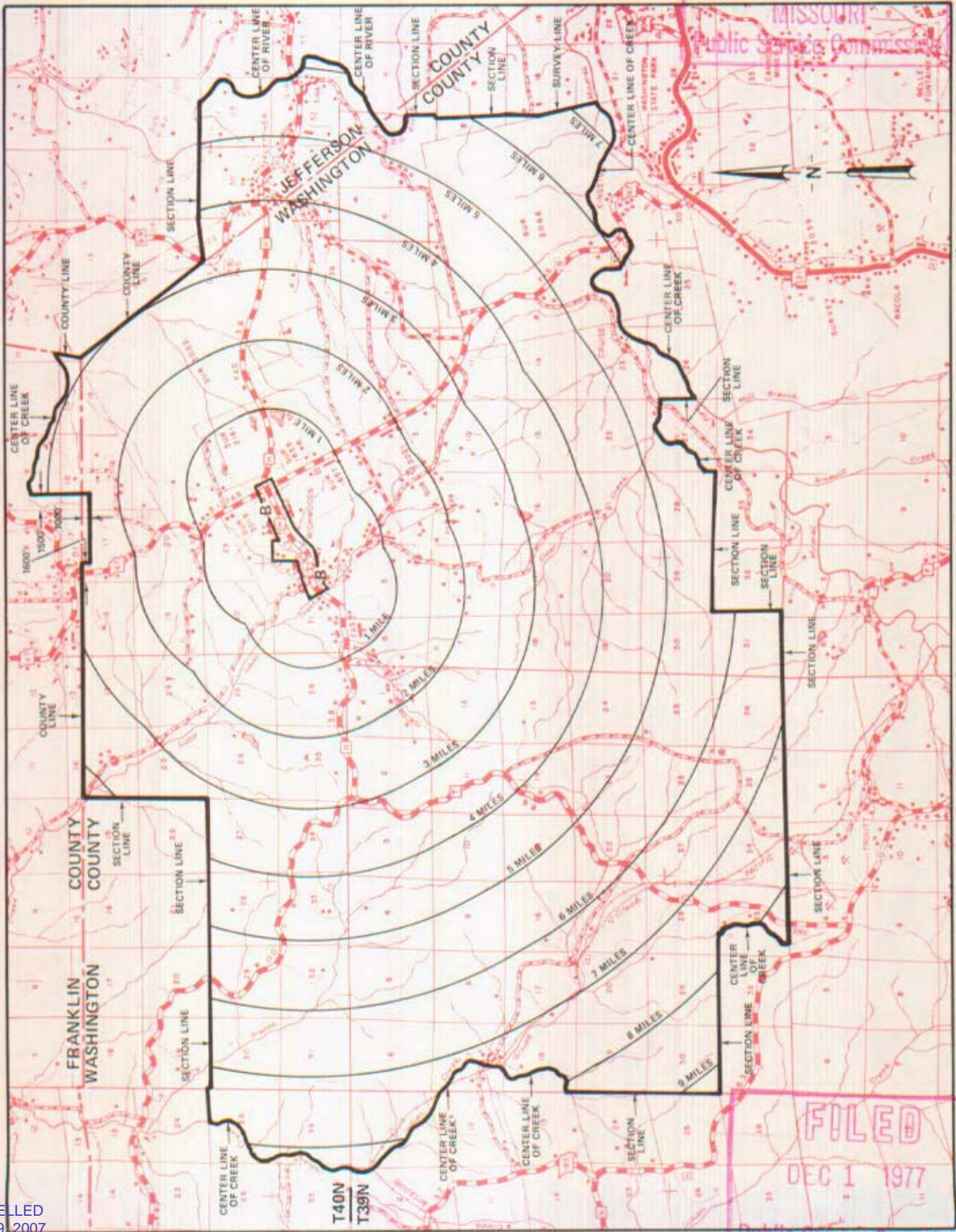
MAY 23 1977

DEC 1 1977

NO SUPPLEMENT TO THIS TARIFF WILL BE ISSUED EXCEPT FOR THE PURPOSE OF CANCELING THIS TARIFF.

P. S. C. Mo. No. 17 EXCHANGE AREA MAP

RECEIVED
Richwoods, Missouri
5th REVISED SHEET 3
REPLACING 4th REVISED SHEET 3
MAY 20 1977



FILED
DEC 1 1977
Public Service Commission

CANCELLED
June 29, 2007
TO-202-185
Missouri Public
Service Commission

By R. R. SHOCKLEY, Vice President, Missouri
Southwestern Bell Telephone
St. Louis, Missouri

Issued: MAY 23 1977

Effective: DEC 1 1977

SBC PSC MO #17

Risco, Missouri

Original Sheet 2

Replacing Southeast Missouri Telephone Company

P.S.C. Mo. No. 2

Original Sheet 1-A

Non-Scannable Map

**(Is viewable in the Data Center
200 Madison Street, 1st Floor
Jefferson City MO)**

NO SUPPLEMENT TO THIS TARIFF WILL BE ISSUED EXCEPT FOR THE PURPOSE OF CANCELING THIS TARIFF.

P. S. C. Mo. No. 17

EXCHANGE AREA MAP

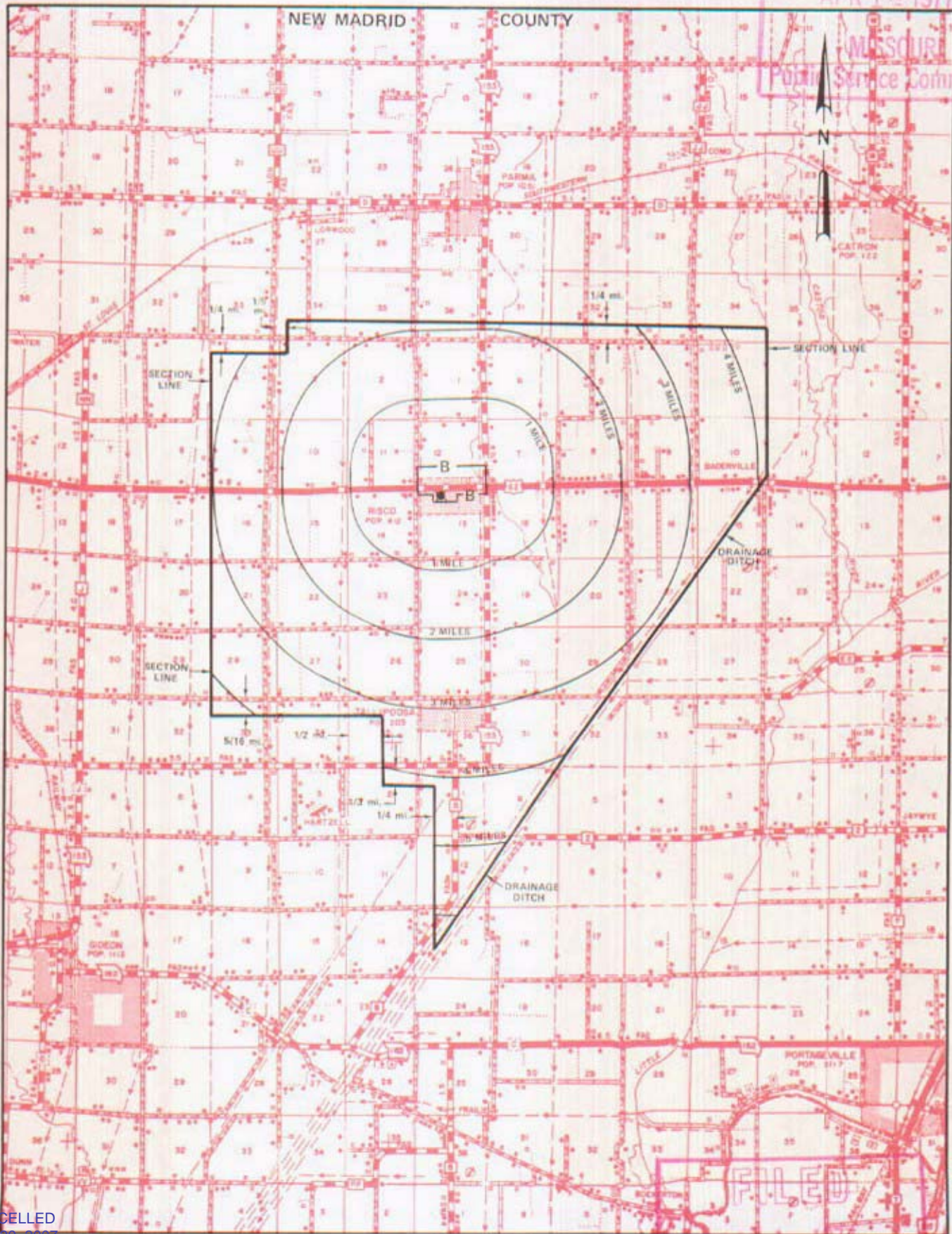
REPLACING 1st REVISED SHEET 3

Risco, Missouri

2nd REVISED SHEET 3

APR 1 1977

MISSOURI
Public Service Commission



T23N
T22N

T22N
T21N

T21N
T20N

FILED

OCT 1 1977

Public Service Commission
Effective: Oct 1, 1977

CANCELLED
June 29, 2007
TO-202-188
Missouri Public
Service Commission

Issued: April 15, 1977

By R. R. SHOCKLEY, Vice President, Missouri
Southwestern Bell Telephone Company
St. Louis, Missouri

No supplement to this
tariff will be issued
except for the purpose
of canceling this tariff

ROGERSVILLE, MISSOURI
1st Revised Sheet 2
Replacing Original Sheet 2

BASE RATE AREA MAP

THIS AREA IS INCLUDED IN THE SPRINGFIELD METROPOLITAN EXCHANGE.

FILED

JUL 07 1993

MO. PUBLIC SERVICE COMM.

Issued: **MAY 25 1993**

Effective: **JUL 07 1993**

By A. D. ROBERTSON, Assistant Vice President-External Affairs
Southwestern Bell Telephone Company
St. Louis, Missouri

No supplement to this
tariff will be issued
except for the purpose
of canceling this tariff

ROGERSVILLE, MISSOURI
9th Revised Sheet 3
Replacing 8th Revised Sheet 3

EXCHANGE AREA MAP

THIS AREA IS INCLUDED IN THE SPRINGFIELD METROPOLITAN EXCHANGE.

RECEIVED

MAY 25 1993

MO. PUBLIC SERVICE COMM.

FILED

JUL 07 1993

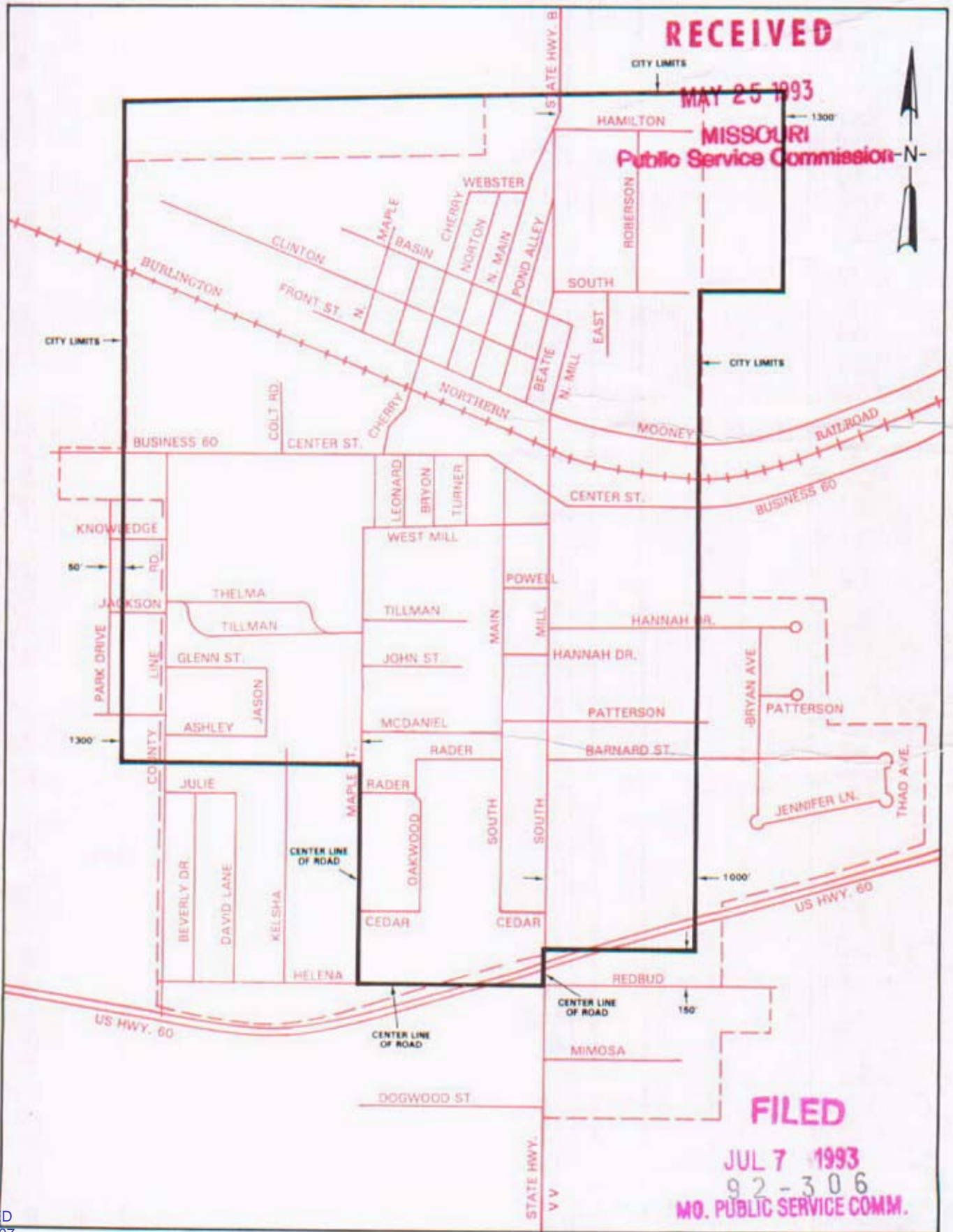
MO. PUBLIC SERVICE COMM.

Issued: **MAY 25 1993**

Effective: **JUL 07 1993**

By A. D. ROBERTSON, Assistant Vice President-External Affairs
Southwestern Bell Telephone Company
St. Louis, Missouri

P. S. C. Mo. No. 17 BASE RATE AREA MAP



RECEIVED

MAY 25 1993

MISSOURI
Public Service Commission

FILED

JUL 7 1993

92-306

MO. PUBLIC SERVICE COMM.

CANCELLED
June 29, 2007
TO-2002-185
Missouri Public
Service Commission

By A. D. ROBERTSON, Assistant Vice President - External Affairs
Southwestern Bell Telephone Company
St. Louis, Missouri

Issued: MAY 25, 1993

Effective: JULY 7, 1993

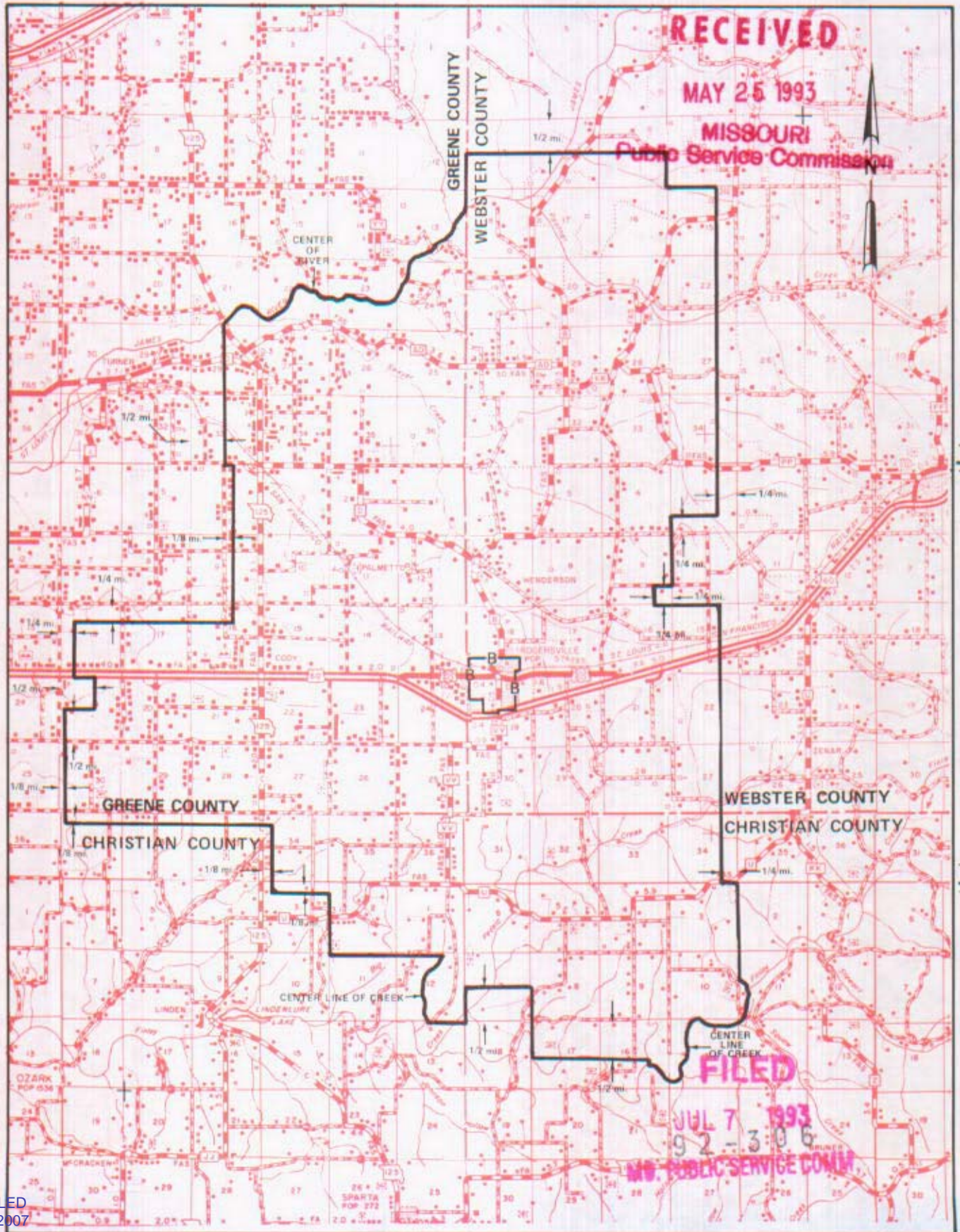
NO SUPPLEMENT TO THIS TARIFF WILL BE ISSUED EXCEPT FOR THE PURPOSE OF CANCELING THIS TARIFF.

SPRINGFIELD METROPOLITAN EXCHANGE

Rogersville Zone

ORIGINAL SHEET 5-B

P. S. C. Mo. No. 17 ZONE AREA MAP



CANCELLED
June 29, 2007
TO-2002-185
Missouri Public
Service Commission

By A. D. ROBERTSON, Assistant Vice President - External Affairs
Southwestern Bell Telephone Company
St. Louis, Missouri

Issued: MAY 25, 1993

Effective: JULY 7, 1993

SBC PSC MO #17
Rushville, Missouri
Original Sheet 2

Non-Scannable Map

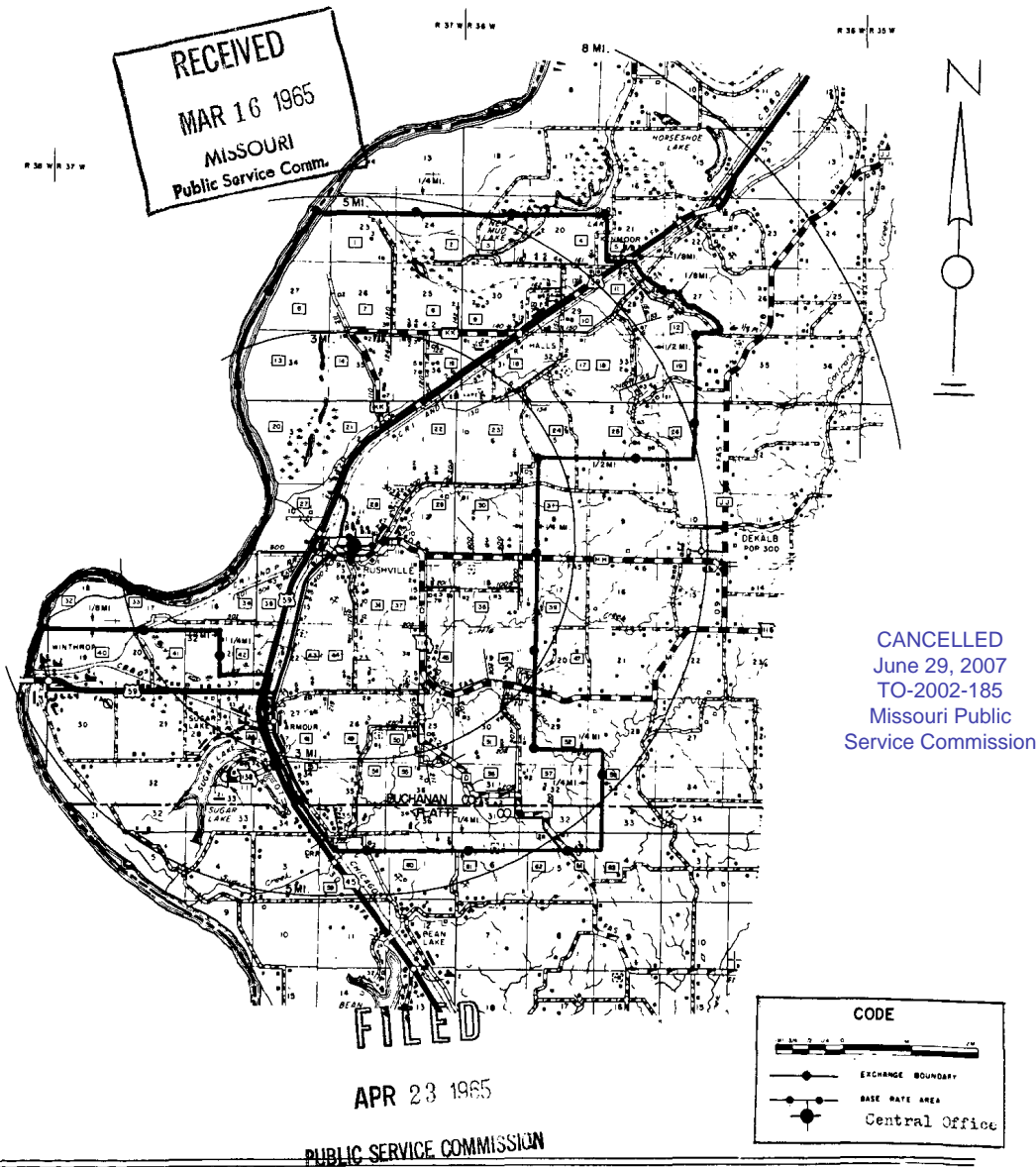
(Is viewable in the Data Center
200 Madison Street, 1st Floor
Jefferson City MO)

NO SUPPLEMENT TO THIS TARIFF WILL
BE ISSUED EXCEPT FOR THE PURPOSE OF
CANCELING THIS TARIFF.

Rushville, Missouri
3rd REVISED SHEET 3
REPLACING 2nd REVISED SHEET 3

P. S. C. Mo. No. 17
EXCHANGE AREA MAP

RUSHVILLE, Mo.



CANCELLED
June 29, 2007
TO-2002-185
Missouri Public
Service Commission

Issued: March 23, 1965

Effective: April 23, 1965

By R. R. SHOCKLEY, Vice President and General Manager
Southwestern Bell Telephone Company
St. Louis, Missouri