

NO SUPPLEMENT TO THIS TARIFF WILL BE ISSUED EXCEPT FOR THE PURPOSE OF CANCELING THIS TARIFF.

P. S. C. Mo. No. 17

BASE RATE AREA MAP

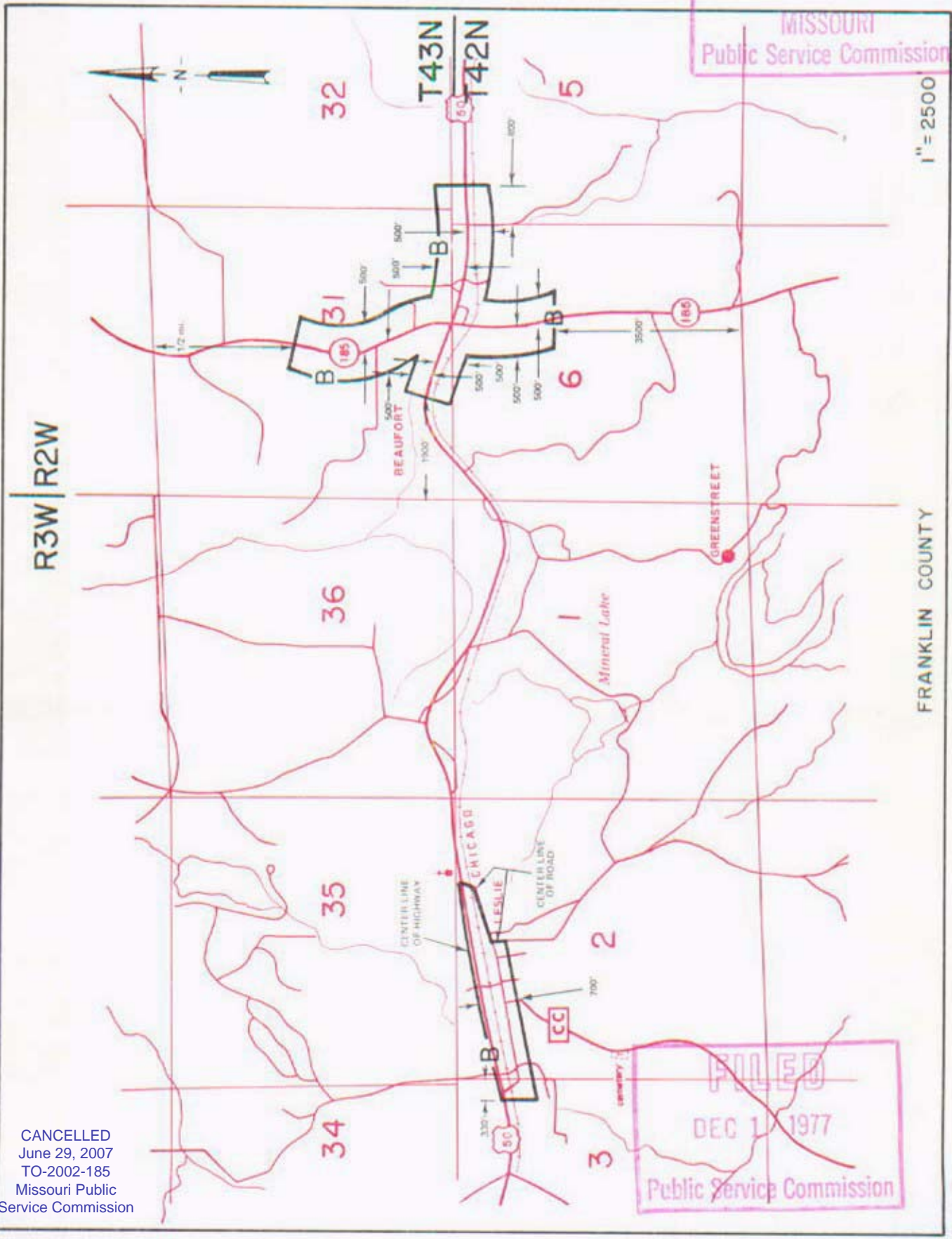
Beaufort, Missouri

RECEIVED
1st REVISED SHEET 2,
REPLACING ORIGINAL SHEET 2

MAY 20 1977

MISSOURI
Public Service Commission

1" = 2500'



CANCELLED
June 29, 2007
TO-2002-185
Missouri Public
Service Commission

FILED
DEC 1 1977
Public Service Commission

By R. R. SHOCKLEY, Vice President, Missouri
Southwestern Bell Telephone

DEC 1 1977

NO SUPPLEMENT TO THIS TARIFF WILL BE ISSUED EXCEPT FOR THE PURPOSE OF CANCELING THIS TARIFF.

Beaufort, Missouri

P. S. C. Mo. No. 17

EXCHANGE AREA MAP

REPLACING

8th Revised Sheet 3
7th Revised Sheet 3



CANCELLED
June 29, 2007
TO-2002-185
Missouri Public
Service Commission

FILED
Missouri Public
Service Commission

Issued: January 30, 2006

By CINDY BRINKLEY, President-Missouri
Southwestern Bell Telephone, L.P., d/b/a AT&T Missouri
St. Louis, Missouri

Effective: March 1, 2006

NO SUPPLEMENT TO THIS TARIFF WILL BE ISSUED EXCEPT FOR THE PURPOSE OF CANCELING THIS TARIFF.

P. S. C. Mo. No. 17

EXCHANGE AREA MAP

REPLACING 6th REVISED SHEET 3

Beaufort, Missouri

7th REVISED SHEET 3

6th REVISED SHEET 3

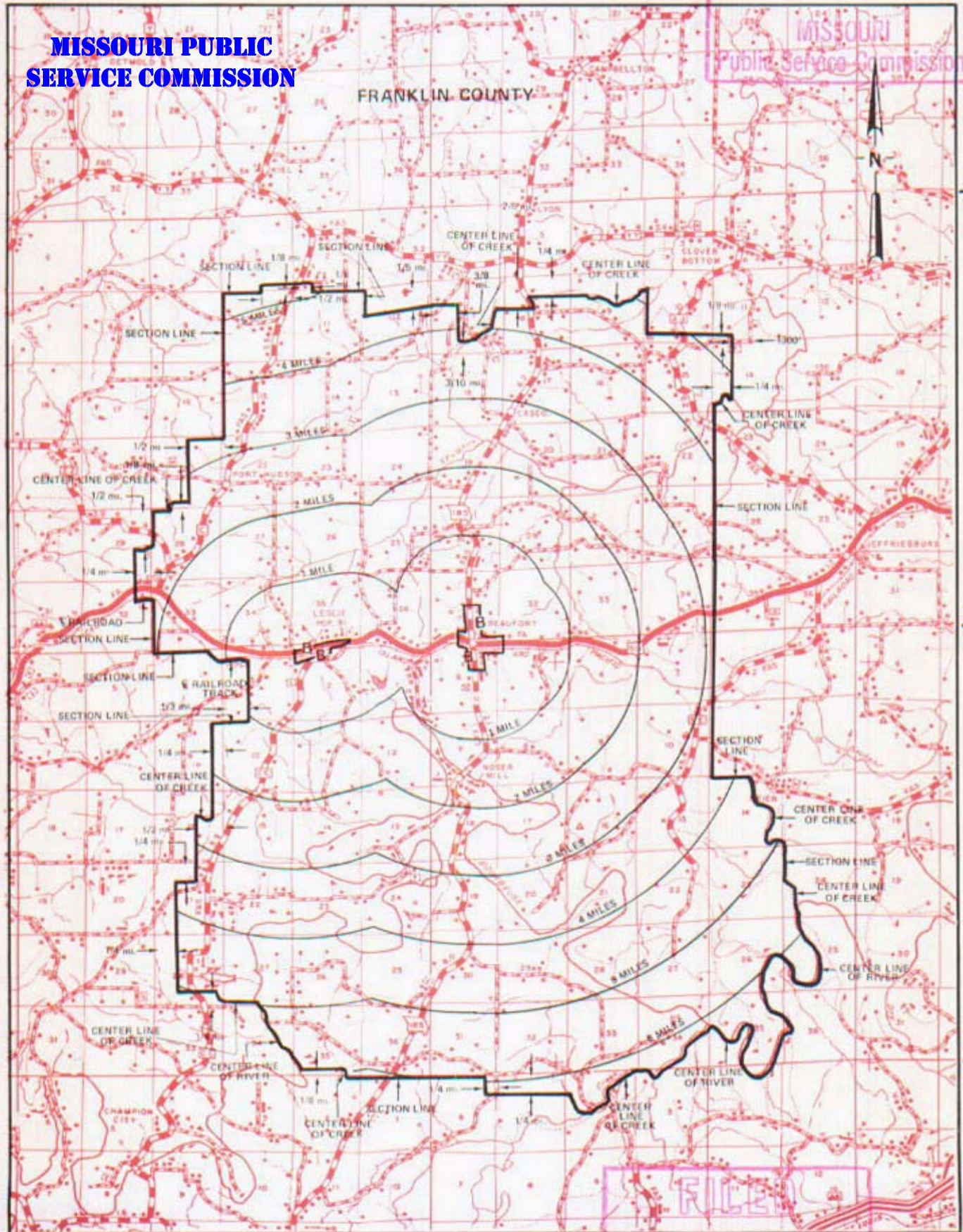
MAY 20 1977

CANCELLED

March 1, 2006

MISSOURI PUBLIC SERVICE COMMISSION

MISSOURI Public Service Commission



T44N
T43N

T43N
T42N

T42N
T41N

R4W | R3W

R3W | R2W

DEC 1 1977 R2W | R1W

By R. R. SHOCKLEY, Vice President, Missouri Southwestern Bell Telephone Company

May 23, 1977

Public Service Commission DEC 1 1977

NO SUPPLEMENT TO THIS TARIFF WILL BE ISSUED EXCEPT FOR THE PURPOSE OF CANCELING THIS TARIFF.

P. S. C. Mo. No. 17
BASE RATE AREA MAP

Bell City, Missouri
ORIGINAL SHEET 2
REPLACING SOUTHEAST MISSOURI
TELEPHONE COMPANY P. S. C. Mo. No. 2
2nd REVISED SHEET 2

BELL CITY, MO.



RECEIVED
DEC 7 1955
MISSOURI
Public Service Comm.

FILED
JAN 8 1956
PUBLIC SERVICE COMMISSION

CODE
BELL CENTRAL OFFICE: ◆
BASE RATE AREA LIMITS: ◆◆◆◆

Issued: December 8, 1955

CANCELLED
June 29, 2007
TO-2002-185
Missouri Public
Service Commission

By J. R. PETERSON, General Manager
Southwestern Bell Telephone Company
St. Louis, Missouri

Effective: January 8, 1956

NO SUPPLEMENT TO THIS TARIFF WILL BE ISSUED EXCEPT FOR THE PURPOSE OF CANCELING THIS TARIFF.

P. S. C. Mo. No. 17

EXCHANGE AREA MAP

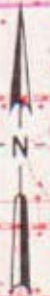
Bell City, Missouri

RECEIVED
4th REVISED SHEET 3
REPLACING 3rd REVISED SHEET 3

FEB 14 1977

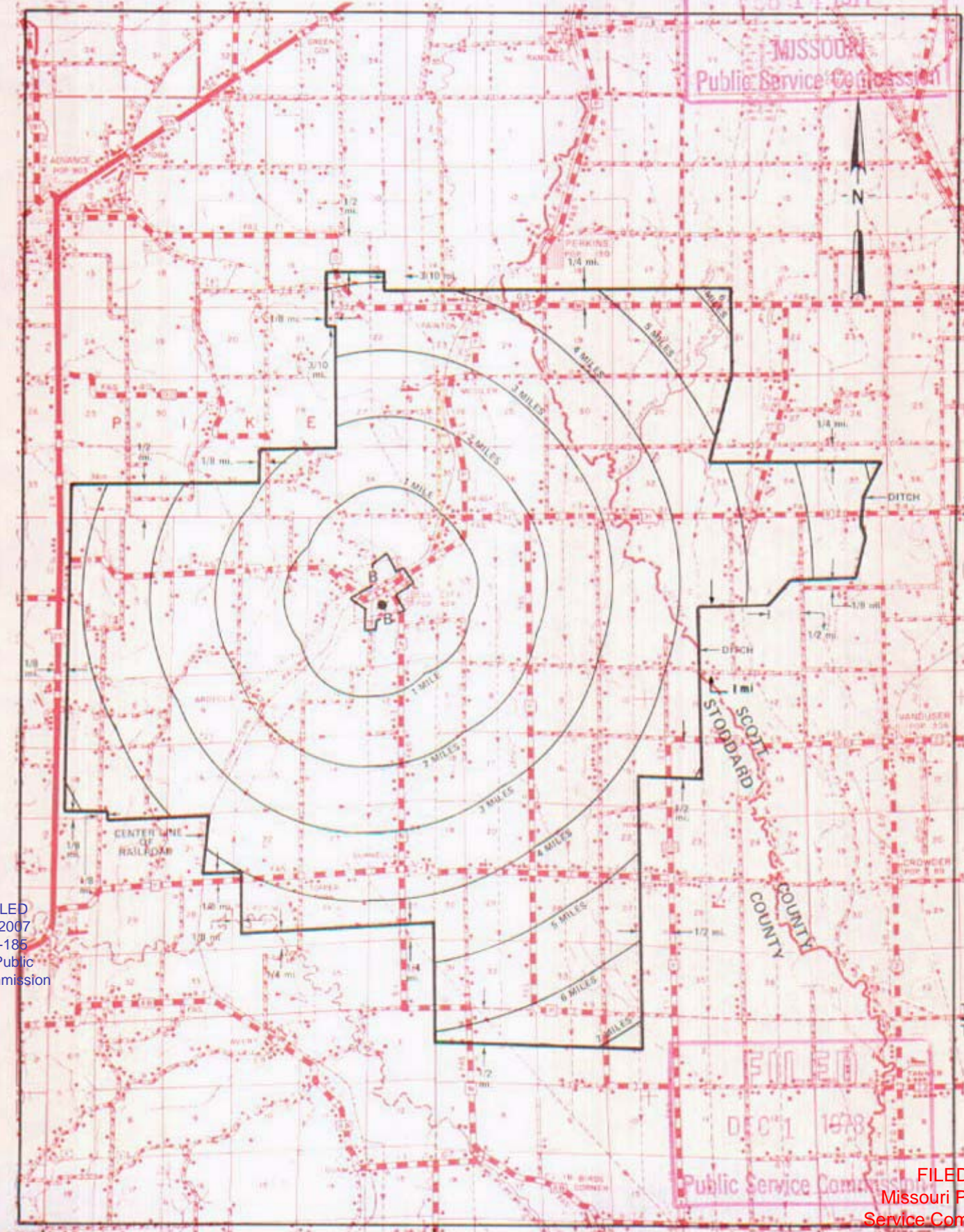
MISSOURI
Public Service Commission

T29N
T28N



T28N
T27N

T27N
T26N



CANCELLED
June 29, 2007
TO-2002-185
Missouri Public
Service Commission

FILED
DEC 1 1978
Public Service Commission

FILED
Missouri Public
Service Commission

R9E | R10E

R10E | R11E

R11E | R12E

By R. R. SHOCKLEY, Vice President, Missouri
Southwestern Bell Telephone Company

DEC 1 1978

SBC PSC MO #17

Benton, Missouri

Original Sheet 2

Replacing 1st Revised Sheet 1-A

Southeast Missouri Tele. Company

P.S.C. Mo. No. 2

Non-Scannable Map

(Is viewable in the Data Center
200 Madison Street, 1st Floor
Jefferson City MO)

NO SUPPLEMENT TO THIS TARIFF WILL BE ISSUED EXCEPT FOR THE PURPOSE OF CANCELING THIS TARIFF.

P. S. C. Mo. No. 17

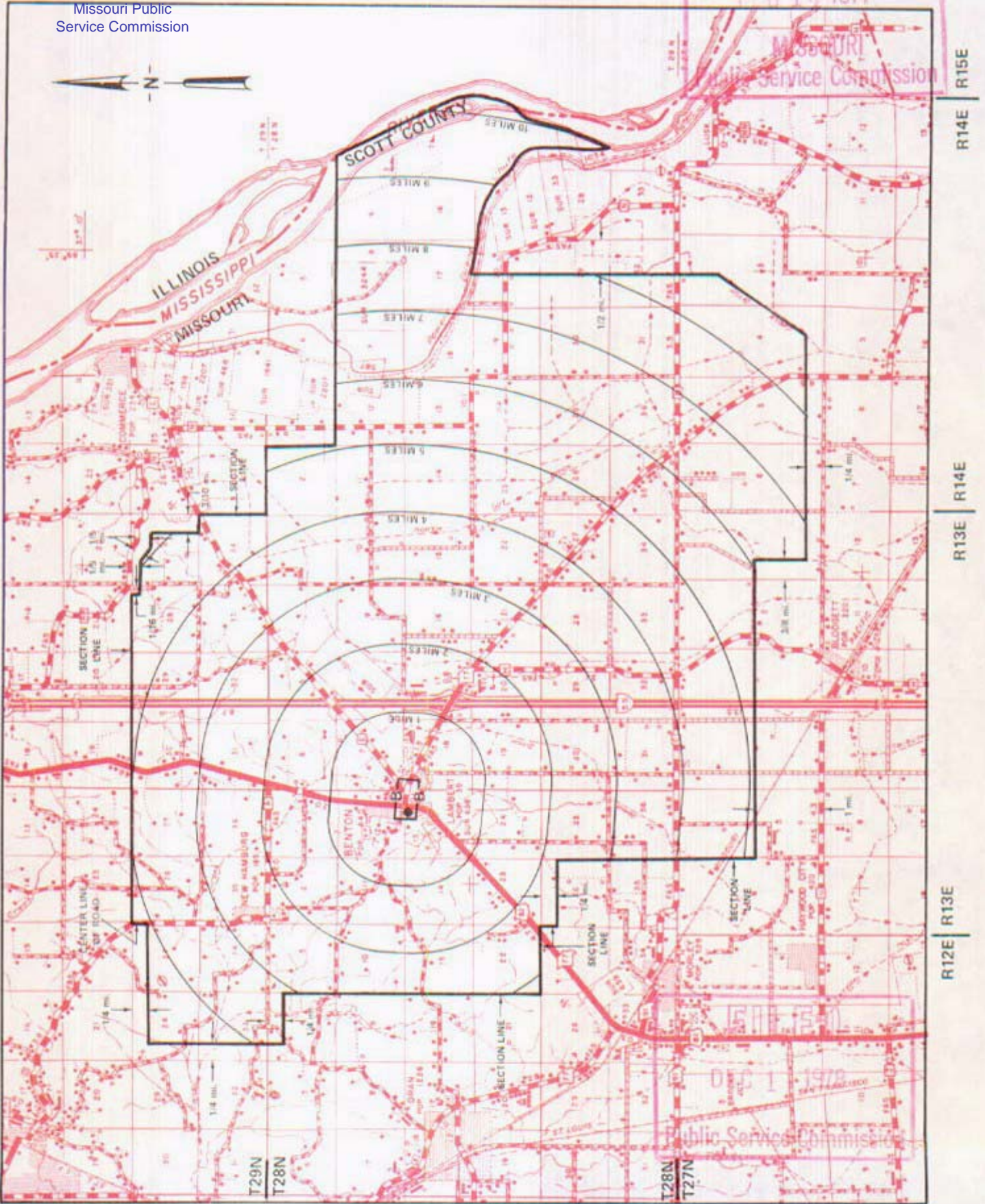
EXCHANGE AREA MAP

Benton, Missouri
RECEIVED
3rd REVISED SHEET 3
REPLACING 2nd REVISED SHEET 3

CANCELLED
June 29, 2007
TO-2002-185
Missouri Public
Service Commission

FEB 14 1977

MISSOURI
Public Service Commission



By R. R. SHOCKLEY, Vice President, Missouri
Southwestern Bell Telephone Company

DEC 1 1978

SBC PSC MO #17
Billings, Missouri
2nd Revised Sheet 2
Replacing 1st Revised Sheet 2

Non-Scannable Map

(Is viewable in the Data Center
200 Madison Street, 1st Floor
Jefferson City MO)

RECEIVED

Billings, Missouri

NO SUPPLEMENT TO THIS TARIFF WILL BE ISSUED EXCEPT FOR THE PURPOSE OF CANCELING THIS TARIFF.

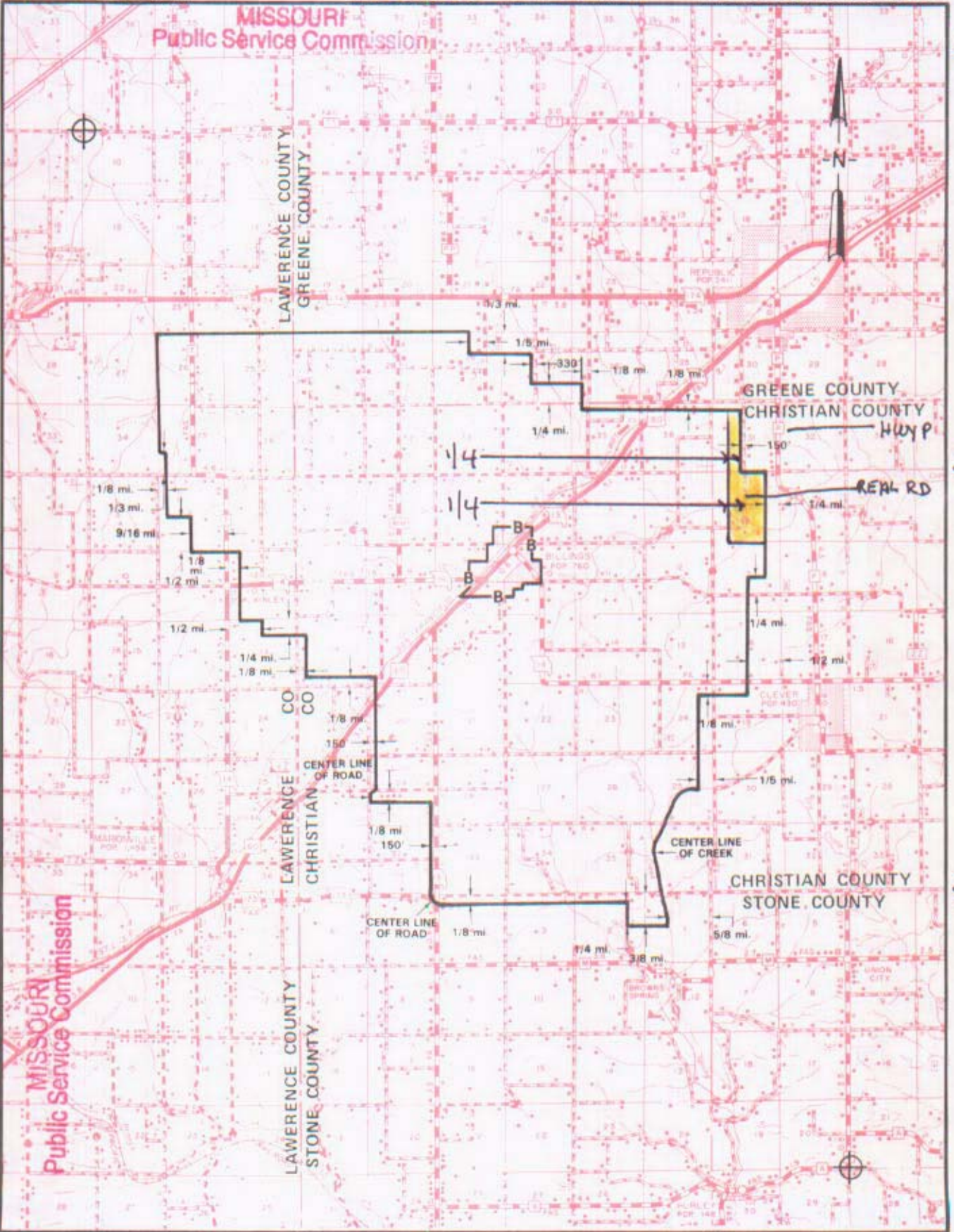
P. S. C. Mo. No. 17 EXCHANGE AREA MAP

7th REVISED SHEET 3 REPLACING 8th REVISED SHEET 3

T29N
T28N

T28N
T27N

T27N
T26N



FILED
DEC 04 2000

CANCELLED
June 29, 2007
TO-2002-185
Missouri Public
Service Commission

November 3, 2000 By **PAN NEWTON**
R. D. BARRON, PRESIDENT, MISSOURI DIVISION
 Southwestern Bell Telephone Company
 St. Louis, Missouri

December 4, 2000
 Effective: March 25, 1994

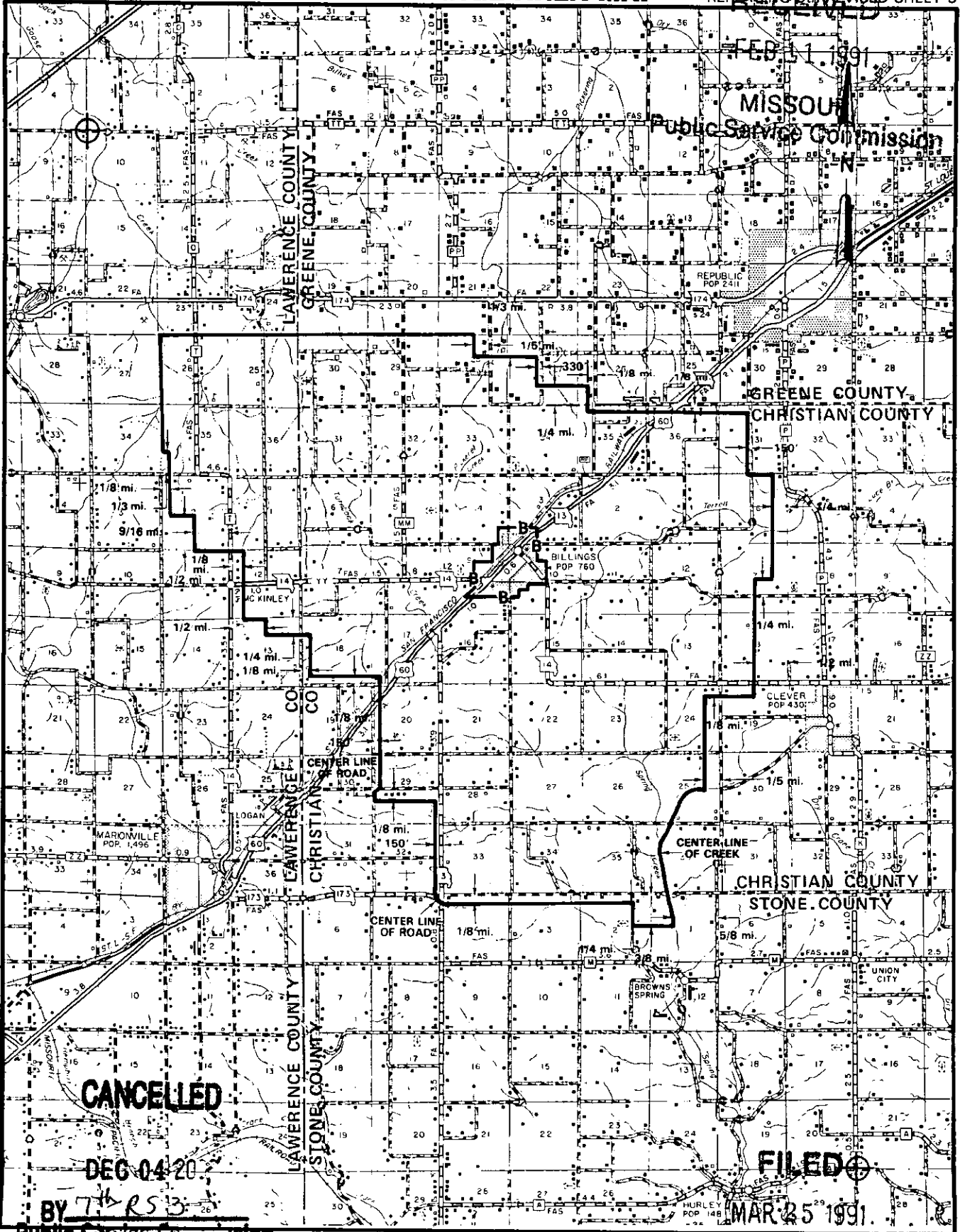
Issued: February 19, 1991

Effective: March 25, 1994

NO SUPPLEMENT TO THIS TARIFF WILL BE ISSUED EXCEPT FOR THE PURPOSE OF CANCELING THIS TARIFF.

P. S. C. Mo. No. 17 EXCHANGE AREA MAP

6th REVISED SHEET 3
REPLACING 5th REVISED SHEET 3



T29N
T28N

T28N
T27N

T27N
T26N

CANCELLED

DEC 04 20

BY 74 RS 3

FILED

MAR 25 1991

Public Service Commission
MISSOURI
R25W | R24W

By R. D. BARRON, PRESIDENT, MISSOURI DIVISION
Southwestern Bell Telephone Company
St. Louis, Missouri

Public Service Commission
R24W | R23W

Issued: February 19, 1991

Effective: March 25, 1991

SBC PSC MO #17
Bismarck, Missouri
1st Revised Sheet 2
Replacing Original Sheet 2

Non-Scannable Map

(Is viewable in the Data Center
200 Madison Street, 1st Floor
Jefferson City MO)

NO SUPPLEMENT TO THIS TARIFF WILL BE ISSUED EXCEPT FOR THE PURPOSE OF CANCELING THIS TARIFF.

P. S. C. Mo. No. 17
EXCHANGE AREA MAP

Bismarck, Missouri

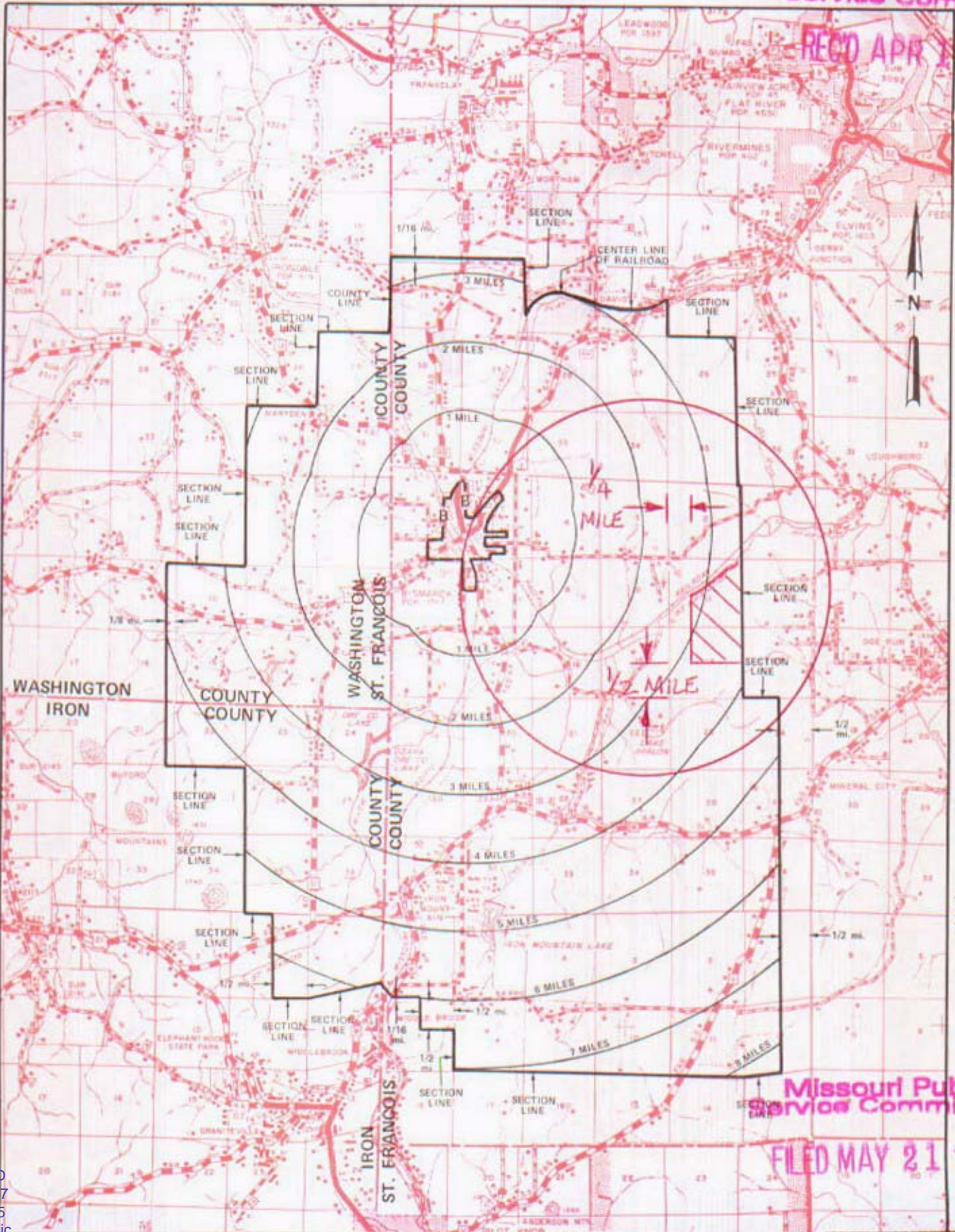
7th REVISED SHEET 3
REPLACING 5th REVISED SHEET 3

Missouri Public Service Commission

T37N

T36N

REC'D APR 19 1999



T36N

T35N

T35N

T34N

Missouri Public Service Commission

FILED MAY 21 1999

APR 19 1999

R3E | R4E Priscilla Hill-Ardoin
By R. R. SHOCKLEY, Vice President, Missouri
Southwestern Bell Telephone Company

R4E | R3E MAY 19 1999

JUL 1 MAY 21 1999

May 10, 1977

CANCELLED
June 29, 2007
TO-2002-185
Missouri Public
Service Commission

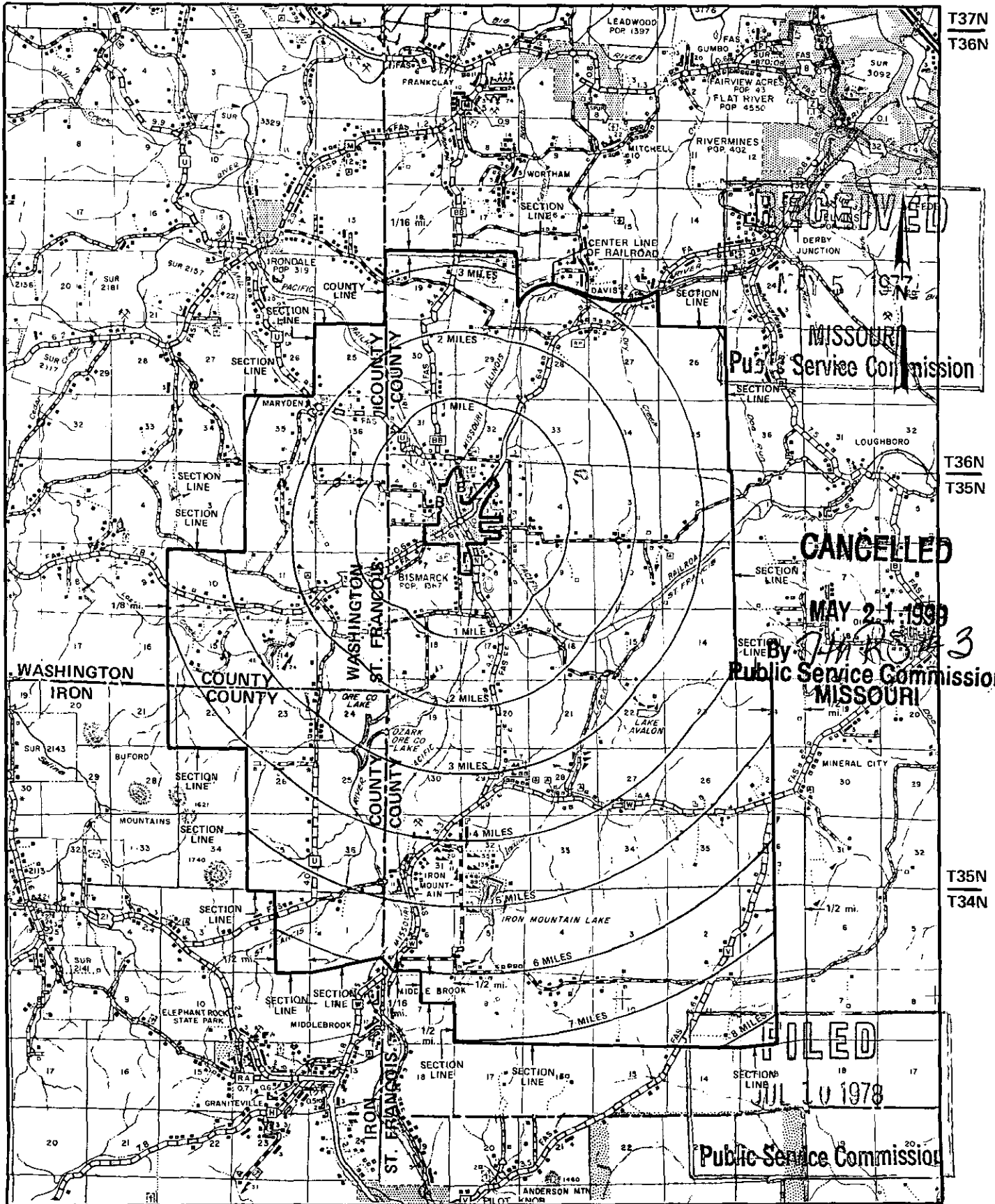
NO SUPPLEMENT TO THIS TARIFF WILL BE ISSUED EXCEPT FOR THE PURPOSE OF CANCELING THIS TARIFF.

P. S. C. Mo. No. 17

Bismarck, Missouri

6th REVISED SHEET 3
REPLACING 5th REVISED SHEET 3

EXCHANGE AREA MAP



T37N
T36N

T36N
T35N

T35N
T34N

RECEIVED
MAY 15 1977
MISSOURI
Public Service Commission

CANCELLED
MAY 21 1999
By *JHR/3*
Public Service Commission
MISSOURI

FILED
JUL 10 1978
Public Service Commission

R3E | R4E

R4E | R5E

By R. R. SHOCKLEY, Vice President, Missouri
Southwestern Bell Telephone Company
St. Louis, Missouri

Issued: May 10, 1977

Effective: JUL 10 1978

SBC PSC MO #17
Bloomfield, Missouri
Original Sheet 2
Replacing 1st Revised Sheet 1-A

Non-Scannable Map

(Is viewable in the Data Center
200 Madison Street, 1st Floor
Jefferson City MO)

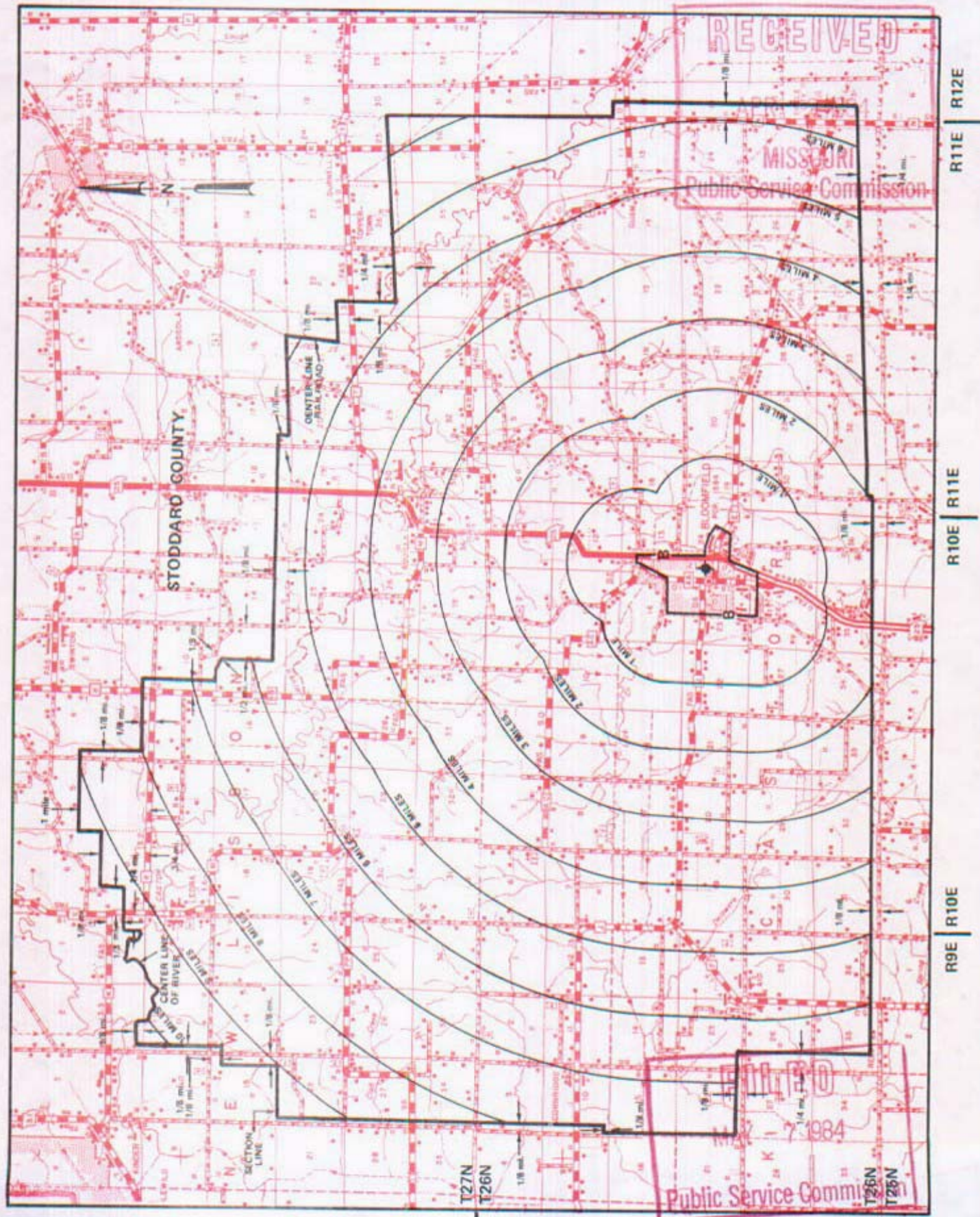
NO SUPPLEMENT TO THIS TARIFF WILL BE ISSUED EXCEPT FOR THE PURPOSE OF CANCELING THIS TARIFF.

P. S. C. Mo. No. 17

Bloomfield, Missouri

EXCHANGE AREA MAP

8th REVISED SHEET 3 REPLACING 7th REVISED SHEET 3



CANCELLED
June 29, 2007
TO-2002-185
Missouri Public
Service Commission

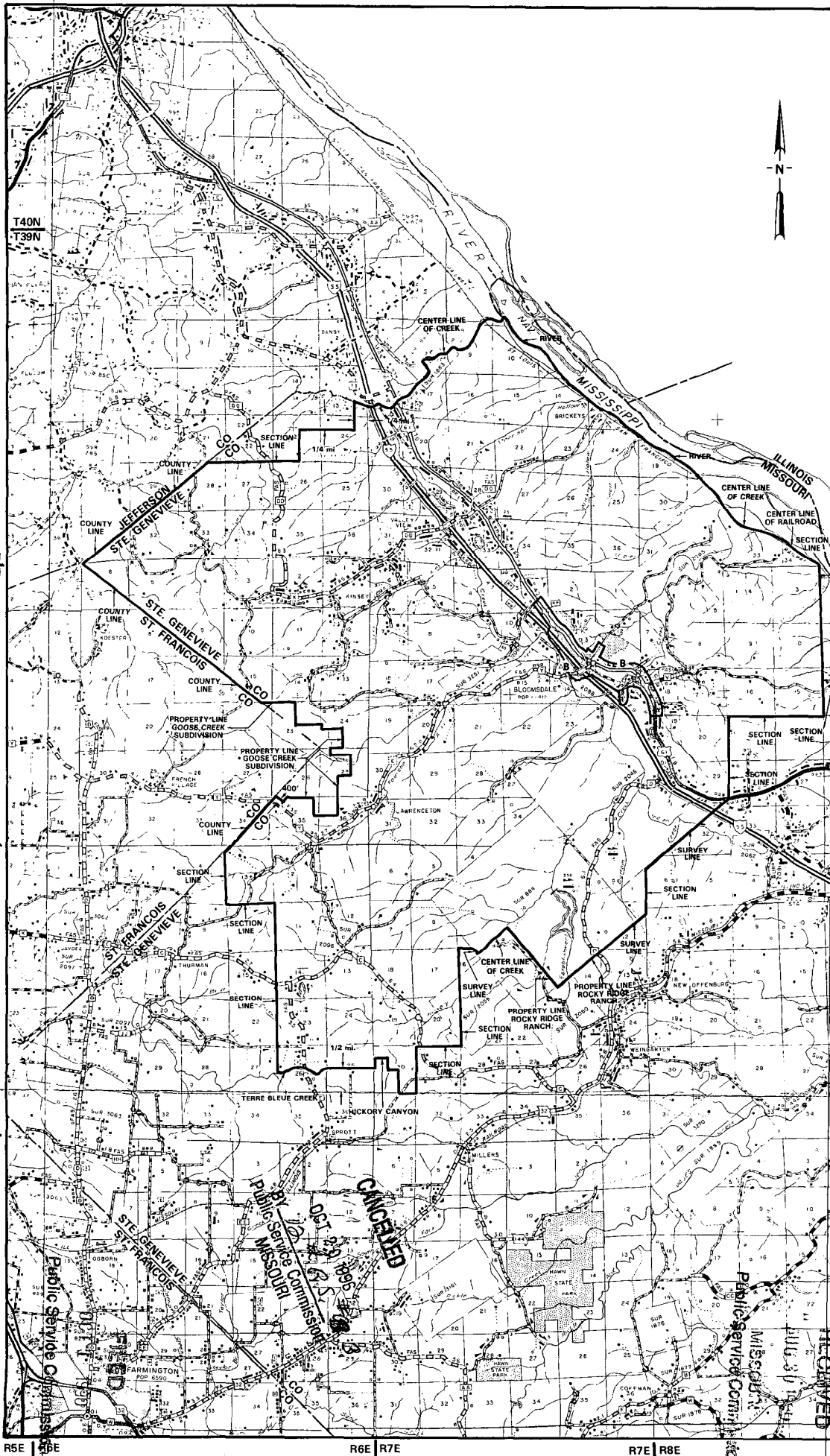
By R. D. BARRON, President, Missouri DIVISION
Southwestern Bell Telephone Company

Issued: APRIL 6, 1984

NO SUPPLEMENT TO THIS TARIFF WILL BE ISSUED EXCEPT FOR THE PURPOSE OF CANCELING THIS TARIFF.

P. S. C. Mo. No. 17
EXCHANGE AREA MAP

Bloomdsdale, Missouri
11th REVISED SHEET 3
REPLACING 10th REVISED SHEET 3



Issued: August 30, 1890

By R. D. BARRON, PRESIDENT, MISSOURI DIVISION
Southwestern Bell Telephone Company
St. Louis, Missouri

Effective: October 1, 1890

RECEIVED
JUL 30 1895

NO SUPPLEMENT TO THIS TARIFF WILL BE ISSUED EXCEPT FOR THE PURPOSE OF CANCELING THIS TARIFF.

P. S. C. Mo. No. 17

Bloomdsdale, Missouri

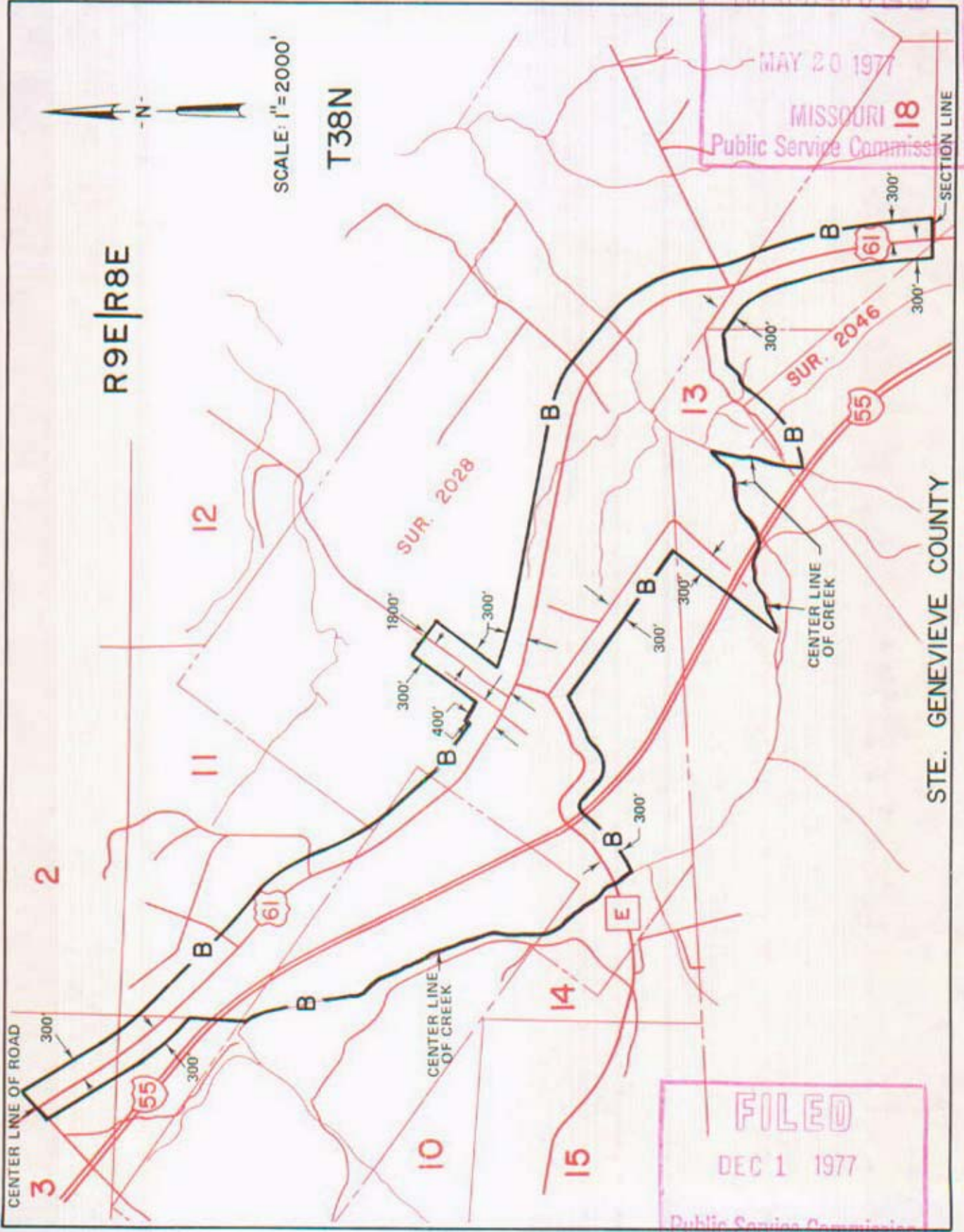
BASE RATE AREA MAP

2nd REVISED SHEET 2 REPLACING 1st REVISED SHEET 2

RECEIVED

MAY 20 1977

MISSOURI 18 Public Service Commission



STE. GENEVIEVE COUNTY

FILED DEC 1 1977 Public Service Commission

CANCELLED June 29, 2007 TO-2002-185 Missouri Public Service Commission

By R. R. SHOCKLEY, Vice President, Missouri

Southwestern Bell Telephone St. Louis, Missouri

Issued MAY 23 1977

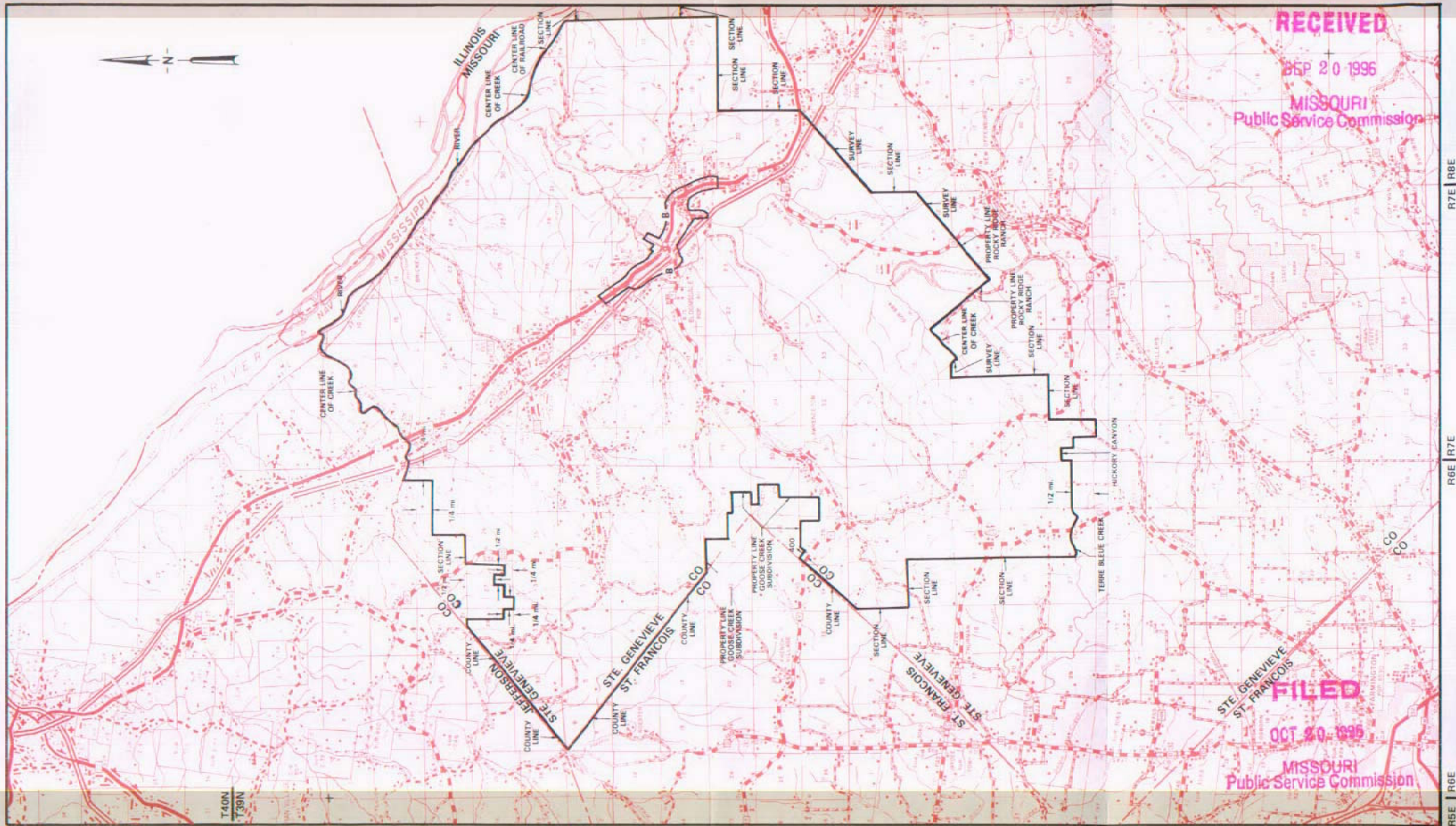
Effective: DEC 1 1977

NO SUPPLEMENT TO THIS TARIFF WILL
BE ISSUED EXCEPT FOR THE PURPOSE OF
CANCELING THIS TARIFF.

P. S. C. Mo. No. 17
EXCHANGE AREA MAP

Bloomdsdale, Missouri

12th REVISED SHEET 3
REPLACING 11th REVISED SHEET 3



RECEIVED

SEP 20 1996

MISSOURI
Public Service Commission

FILED

OCT 20 1996

MISSOURI
Public Service Commission

By KAREN JENNINGS, President - Missouri
Southwestern Bell Telephone Company
St. Louis, Missouri

Issued: September 20, 1996

Effective: October 20, 1996

No Supplement to this tariff will be issued except for the purpose of canceling this tariff.

Missouri Portion- Blytheville, Arkansas Exchange 24th Revised Sheet 1 Replacing 23rd Revised Sheet 1

(RT)

LOCAL EXCHANGE TARIFF

1.1. GENERAL

This Tariff is governed, except as otherwise specified herein, by all other Tariffs of the Southwestern Bell Telephone Company on file in the State of Missouri, which are hereby made a part of this Tariff. Unless otherwise specified, the charges quoted in this Tariff or in any other Missouri Tariff are for periods of one month, are payable monthly in advance and entitle the customer to exchange telephone service within the Blytheville Exchange Area and Extended Area Service to the Dell, Arkansas, Exchange.

This exchange area includes, in addition in the Missouri portion, certain territory in the State of Arkansas comprising the City of Blytheville and vicinity, as shown on the exchange area map for this exchange.

1.2 RATES

The rates for main and extension service do not include a Telephone Company-provided instrument, except for Semi-Public Service, which includes one station equipped with a coin-collecting device.

1.2.1 Within the Base Rate Area, As shown on The Related Exchange Area Map:

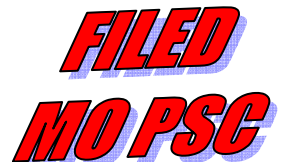
<u>Class of Service</u>	<u>Current Monthly Rates(1)</u>
Urban Service	
Business	
Flat Rate -	
One-Party Line	\$24.71(CR)
Multiline	31.32
PBX Trunk	31.32

(1) See Sheet 2 for maximum allowable rates.

Issued: October 17, 2005

Effective: December 1, 2005

By CINDY BRINKLEY, President-SBC Missouri
Southwestern Bell Telephone, L.P., d/b/a SBC Missouri
St. Louis, Missouri



No Supplement to this tariff will be issued except for the purpose of canceling this tariff.

Missouri Portion-
Blytheville, Arkansas, Exchange
23rd Revised Sheet 1
Replacing 22nd Revised Sheet 1

SOUTHWESTERN BELL TELEPHONE COMPANY
LOCAL EXCHANGE TARIFF

1.1. GENERAL

This Tariff is governed, except as otherwise specified herein, by all other Tariffs of the Southwestern Bell Telephone Company on file in the State of Missouri, which are hereby made a part of this Tariff. Unless otherwise specified, the charges quoted in this Tariff or in any other Missouri Tariff are for periods of one month, are payable monthly in advance and entitle the customer to exchange telephone service within the Blytheville Exchange Area and Extended Area Service to the Dell, Arkansas, Exchange.

This exchange area includes, in addition in the Missouri portion, certain territory in the State of Arkansas comprising the City of Blytheville and vicinity, as shown on the exchange area map for this exchange.

1.2 RATES

The rates for main and extension service do not include a Telephone Company-provided instrument, except for Semi-Public Service, which includes one station equipped with a coin-collecting device.

1.2.1 Within the Base Rate Area, As shown on The Related Exchange Area Map:

<u>Class of Service</u>	<u>Current Monthly Rates(1)</u>
Urban Service	
Business	
Flat Rate -	
One-Party Line	\$25.21(CR)
Multiline	31.32
PBX Trunk	31.32

CANCELLED

DEC 01 2005

By 24th RS 1
Public Service Commission
MISSOURI

(1) See Sheet 2 for maximum allowable rates.

Issued: October 15, 2004

Effective: December 1, 2004

By CINDY BRINKLEY, President-SBC Missouri
Southwestern Bell Telephone, L.P., d/b/a SBC Missouri
St. Louis, Missouri

**FILED
MO PSC**

No Supplement to this tariff will be issued except for the purpose of canceling this tariff.

Missouri Portion-
Blytheville, Arkansas, Exchange
22nd Revised Sheet 1
Replacing 21st Revised Sheet 1
Missouri Public

SOUTHWESTERN BELL TELEPHONE COMPANY
LOCAL EXCHANGE TARIFF

REC'D OCT 15 2003

1.1. GENERAL

This Tariff is governed, except as otherwise specified herein, by all other Tariffs of the **Service Commission** Southwestern Bell Telephone Company on file in the State of Missouri, which are hereby made a part of this Tariff. Unless otherwise specified, the charges quoted in this Tariff or in any other Missouri Tariff are for periods of one month, are payable monthly in advance and entitle the customer to exchange telephone service within the Blytheville Exchange Area and Extended Area Service to the Dell, Arkansas, Exchange.

This exchange area includes, in addition in the Missouri portion, certain territory in the State of Arkansas comprising the City of Blytheville and vicinity, as shown on the exchange area map for this exchange.

1.2 RATES

The rates for main and extension service do not include a Telephone Company-provided instrument, except for Semi-Public Service, which includes one station equipped with a coin-collecting device.

1.2.1 Within the Base Rate Area, As shown on The Related Exchange Area Map:

<u>Class of Service</u>	<u>Current Monthly Rates(1)</u>
Urban Service	
Business	
Flat Rate -	
One-Party Line	\$25.90(CR)
Multiline	31.32
PBX Trunk	31.32

CANCELLED

DEC 01 2004
By *23rd RSI*
Public Service Commission
MISSOURI

(1) See Sheet 2 for maximum allowable rates.

Issued: October 15, 2003

Effective: December 1, 2003

By CINDY BRINKLEY, President-SBC Missouri
Southwestern Bell Telephone, L.P., d/b/a SBC Missouri
St. Louis, Missouri

Missouri Public
Service Commission

FILED DEC 01 2003

No Supplement to this tariff will be issued except for the purpose of canceling this tariff.

Missouri Portion-
Blytheville Arkansas, Exchange
21st Revised Sheet 1
Replacing 20th Revised Sheet 1

SOUTHWESTERN BELL TELEPHONE COMPANY
LOCAL EXCHANGE TARIFF

Missouri Public
Service Commission

REC'D OCT 15 2002

1.1. GENERAL

This Tariff is governed, except as otherwise specified herein, by all other Tariffs of the Southwestern Bell Telephone Company on file in the State of Missouri, which are hereby made a part of this Tariff. Unless otherwise specified, the charges quoted in this Tariff or in any other Missouri Tariff are for periods of one month, are payable monthly in advance and entitle the customer to exchange telephone service within the Blytheville Exchange Area and Extended Area Service to the Dell, Arkansas, Exchange.

This exchange area includes, in addition in the Missouri portion, certain territory in the State of Arkansas comprising the City of Blytheville and vicinity, as shown on the exchange area map for this exchange.

1.2 RATES

The rates for main and extension service do not include a Telephone Company-provided instrument, except for Semi-Public Service, which includes one station equipped with a coin-collecting device.

1.2.1 Within the Base Rate Area, As shown on The Related Exchange Area Map:

<u>Class of Service</u>	<u>Current Monthly Rates(1)</u>
Urban Service Business Flat Rate - One-Party Line	\$25.91(CR)
Multiline	31.32
PBX Trunk	31.32

CANCELLED

DEC 01 2003

2nd fl
Missouri Public Service Commission
MISSOURI

Missouri Public
Service Commission

FILED DEC 01 2002

(1) See Sheet 2 for maximum allowable rates.

Issued: October 15, 2002

Effective: December 1, 2002

By CINDY BRINKLEY, President-Missouri
Southwestern Bell Telephone, L.P., d/b/a Southwestern Bell Telephone Company
St. Louis, Missouri

No supplement to this tariff will be issued except for the purpose of canceling this tariff.

MISSOURI PORTION- BLYTHEVILLE,
ARKANSAS, EXCHANGE
20th Revised Sheet 1
Replacing 19th Revised Sheet 1

SOUTHWESTERN BELL TELEPHONE COMPANY
LOCAL EXCHANGE TARIFF

Missouri Public

REC'D OCT 01 2001

1.1 GENERAL

Service Commission

This Tariff is governed, except as otherwise specified herein, by all other Tariffs of the Southwestern Bell Telephone Company on file in the State of Missouri, which are hereby made a part of this Tariff. Unless otherwise specified, the charges quoted in this Tariff or in any other Missouri Tariff are for periods of one month, are payable monthly in advance and entitle the customer to exchange telephone service within the Blytheville Exchange Area and Extended Area Service to the Dell, Arkansas, Exchange.

This exchange area includes, in addition in the Missouri portion, certain territory in the State of Arkansas comprising the City of Blytheville and vicinity, as shown on the exchange area map for this exchange.

1.2 RATES

The rates for main and extension service do not include a Telephone Company-provided instrument, except for Semi-Public Service, which includes one station equipped with a coin-collecting device.

1.2.1 Within the Base Rate Area, As shown on The Related Exchange Area Map:

<u>CLASS OF SERVICE</u>	<u>CURRENT MONTHLY RATES (1)</u>
Urban Service	
Business	
Flat Rate -	
One-Party Line	\$25.68(CR)
Multiline	31.32
PBX Trunk	31.32

CANCELLED

DEC 01 2002
219RS1
Public Service Commission
MISSOURI

(1) See Sheet 2 for maximum allowable rates.

Issued: October 1, 2001

Effective: December 1, 2001

By JAN NEWTON, President-Missouri
Southwestern Bell Telephone Company
St. Louis, Missouri

Missouri Public

FILED DEC 01 2001

Service Commission

No supplement to this tariff will be issued except for the purpose of canceling this tariff.

MISSOURI PORTION- BLYTHEVILLE,
 ARKANSAS, EXCHANGE
 19th Revised Sheet 1
 Replacing 18th Revised Sheet 1

SOUTHWESTERN BELL TELEPHONE COMPANY
 LOCAL EXCHANGE TARIFF

Missouri Public Service Commission

1.1 GENERAL

REC'D OCT 02 2000

This Tariff is governed, except as otherwise specified herein, by all other Tariffs of the Southwestern Bell Telephone Company on file in the State of Missouri, which are hereby made a part of this Tariff. Unless otherwise specified, the charges quoted in this Tariff or in any other Missouri Tariff are for periods of one month, are payable monthly in advance and entitle the customer to exchange telephone service within the Blytheville Exchange Area and Extended Area Service to the Dell, Arkansas, Exchange.

This exchange area includes, in addition in the Missouri portion, certain territory in the State of Arkansas comprising the City of Blytheville and vicinity, as shown on the exchange area map for this exchange.

1.2 RATES

The rates for main and extension service do not include a Telephone Company-provided instrument, except for Semi-Public Service, which includes one station equipped with a coin-collecting device.

1.2.1 Within the Base Rate Area, As shown on The Related Exchange Area Map:

(AT)

<u>Class Of Service</u>	<u>Current Monthly Rates (1)</u>
Urban Service	
Business	
Flat Rate -	
One-Party Line	\$25.87(CR)
Multiline	31.32
PBX Trunk	31.32

CANCELLED

DEC 01 2001
 JOHNS
 Public Service Commission
 MISSOURI

Missouri Public Service Commission

FILED DEC 01 2000

(AT)

(1) See Sheet 2 for maximum allowable rates.

Issued: October 2, 2000

Effective: December 1, 2000

By JAN NEWTON, President-Missouri
 Southwestern Bell Telephone Company
 St. Louis, Missouri

No supplement to this tariff will be issued except for the purpose of canceling this tariff.

MISSOURI PORTION-BLYTHEVILLE, ARKANSAS, EXCHANGE
18th Revised Sheet 1
Replacing 17th Revised Sheet 1

SOUTHWESTERN BELL TELEPHONE COMPANY
LOCAL EXCHANGE TARIFF

1.1 GENERAL

This Tariff is governed, except as otherwise specified herein, by all other Tariffs of the Southwestern Bell Telephone Company on file in the State of Missouri, which are hereby made a part of this Tariff. Unless otherwise specified, the charges quoted in this Tariff or in any other Missouri Tariff are for periods of one month, are payable monthly in advance and entitle the customer to exchange telephone service within the Blytheville Exchange Area and Extended Area Service to the Dell, Arkansas, Exchange.

This exchange area includes, in addition in the Missouri portion, certain territory in the State of Arkansas comprising the City of Blytheville and vicinity, as shown on the exchange area map for this exchange.

1.2 RATES

The rates for main and extension service do not include a Telephone Company-provided instrument except for Semi-Public Service, which includes one station equipped with a coin-collecting device.

(RT)
(RT)
(RT)

(RT)

[Faint, illegible text or stamp]

1.2.1 Within The Base Rate Area, As Shown On The Related Exchange Area Map:

<u>Class of Service</u>	<u>Monthly Rates</u>
Urban Service	
Business	
Flat Rate -	
One-Party Line	(CR) \$26.11
Multiline.	(CR) 31.32
PBX Trunk	31.32

CANCELLED

DEC 01 2000

By *[Signature]*
Public Service Commission
MISSOURI

(DR)
(MR)

FILED

Issued: AUG 25 1988

Effective: ~~SEP 06 1988~~
DEC 1 1988

DEC 1 1988

By R. D. BARRON, President-Missouri Division
Southwestern Bell Telephone Company
St. Louis, Missouri

Public Service Commission

No Supplement to this tariff will be issued except for the purpose of canceling this tariff.

Missouri Portion-
Blytheville, Arkansas Exchange
17th Revised Sheet 1.01
Replacing 16th Revised Sheet 1.01

LOCAL EXCHANGE TARIFF

1.2 RATES (cont'd)

1.2.1 Within the Base Rate Area, As shown on The Related Exchange Area Map: (cont'd)

<u>Class of Service</u>	<u>Current Monthly Rates(1)</u>
Urban Service (cont'd)	
Residence	
Flat Rate -	
One-Party Line	\$11.83(CR)
Lifeline	(2)
Multiline	15.00
PBX Trunk	15.00

- (1) See Sheet 2 for maximum allowable rates.
- (2) A customer eligible under established criteria can receive a discount from his or her bill for residential essential local telecommunications services, in accordance with P.S.C. Mo. – No. 24, Local Exchange Tariff, Section 1.2.2.E, regarding Lifeline Service.

Issued: October 17, 2005

Effective: December 1, 2005

By CINDY BRINKLEY, President-SBC Missouri
Southwestern Bell Telephone, L.P., d/b/a SBC Missouri
St. Louis, Missouri



No Supplement to this tariff will be issued except for the purpose of canceling this tariff.

Missouri Portion-
Blytheville, Arkansas Exchange
16th Revised Sheet 1.01
Replacing 15th Revised Sheet 1.01

(RT)

LOCAL EXCHANGE TARIFF

1.2 RATES (cont'd)

1.2.1 Within the Base Rate Area, As shown on The Related Exchange Area Map: (cont'd)

<u>Class of Service</u>	<u>Current Monthly Rates(1)</u>
Urban Service (cont'd)	
Residence	
Flat Rate -	
One-Party Line	\$12.07
Lifeline	(2)
Multiline	15.00
PBX Trunk	15.00

(CT)(CR)

CANCELLED

DEC 01 2005

By *17th RS 1.01*
Public Service Commission
MISSOURI

(1) See Sheet 2 for maximum allowable rates.

(AT) (2) A customer eligible under established criteria can receive a discount from his or her bill for residential essential local telecommunications services, in accordance with P.S.C. Mo. - No. 24, Local Exchange Tariff, Section 1.2.2.E, regarding Lifeline Service.

Issued: April 1, 2005

Effective: May 1, 2005

By CINDY BRINKLEY, President-SBC Missouri
Southwestern Bell Telephone, L.P., d/b/a SBC Missouri
St. Louis, Missouri

TO-1998-0329

FILED
MO PSC

No Supplement to this tariff will be issued except for the purpose of canceling this tariff.

Missouri Portion-
Blytheville, Arkansas, Exchange
15th Revised Sheet 1.01
Replacing 14th Revised Sheet 1.01

SOUTHWESTERN BELL TELEPHONE COMPANY
LOCAL EXCHANGE TARIFF

1.2 RATES (cont'd)

1.2.1 Within the Base Rate Area, As shown on The Related Exchange Area Map: (cont'd)

<u>Class of Service</u>	<u>Current Monthly Rates(1)</u>
Urban Service (cont'd)	
Residence	
Flat Rate -	
One-Party Line	\$12.07(CR)
Lifeline(2)	8.57(CR)
Multiline	15.00
PBX Trunk	15.00

CANCELLED

MAY 01 2003
By *Walters 1.01*
Public Service Commission
MISSOURI

- (1) See Sheet 2 for maximum allowable rates.
- (2) See P.S.C. Mo. - No. 24, Local Exchange Tariff, Section 1.2.2.E, for description, terms and conditions related to Lifeline Service.

Issued: October 15, 2004

Effective: December 1, 2004

By CINDY BRINKLEY, President-SBC Missouri
Southwestern Bell Telephone, L.P., d/b/a SBC Missouri
St. Louis, Missouri

**FILED
MO PSC**

No Supplement to this tariff will be issued except for the purpose of canceling this tariff.

Missouri Portion-
Blytheville, Arkansas, Exchange
14th Revised Sheet 1.01
Replacing 13th Revised Sheet 1.01
Missouri Public

SOUTHWESTERN BELL TELEPHONE COMPANY Service Commission
LOCAL EXCHANGE TARIFF

REC'D MAY 10 2004

1.2 RATES (cont'd)

1.2.1 Within the Base Rate Area, As shown on The Related Exchange Area Map: (cont'd)

	<u>Class of Service</u>	<u>Current Monthly Rates(1)</u>
	Urban Service (cont'd)	
	Residence	
	Flat Rate -	
(AT)	One-Party Line	\$12.40
	Lifeline(2)	8.90(NR)
	Multiline	15.00
	PBX Trunk	15.00

CANCELLED

DEC 01 2004
By *SWRS 1.01*
Public Service Commission
MISSOURI

- (1) See Sheet 2 for maximum allowable rates.
- (AT) (2) See P.S.C. Mo. – No. 24, Local Exchange Tariff, Section 1.2.2.E, for description, terms and conditions related to Lifeline Service.

Issued: May 10, 2004

Effective: June 9, 2004

By CINDY BRINKLEY, President-SBC Missouri
Southwestern Bell Telephone, L.P., d/b/a SBC Missouri
St. Louis, Missouri

Missouri Public
Service Commission

FILED JUN 09 2004

No Supplement to this tariff will be issued except for the purpose of canceling this tariff.

Missouri Portion-
Blytheville, Arkansas, Exchange
13th Revised Sheet 1.01
Replacing 12th Revised Sheet 1.01

SOUTHWESTERN BELL TELEPHONE COMPANY
LOCAL EXCHANGE TARIFF

Missouri Public

1.2 RATES (cont'd)

1.2.1 Within the Base Rate Area, As shown on The Related Exchange Area Map: (cont'd)

REC'D OCT 15 2003

Class of Service

Current Monthly Rates (1) Service Commission

Urban Service (cont'd)

Residence

Flat Rate -

One-Party Line

\$12.40(CR)

Multiline

15.00

PBX Trunk

15.00

CANCELLED

JUN 09 2004
1,144/251.01
Public Service Commission
MISSOURI

(1) See Sheet 2 for maximum allowable rates.

Issued: October 15, 2003

Effective: December 1, 2003

By CINDY BRINKLEY, President-SBC Missouri
Southwestern Bell Telephone, L.P., d/b/a SBC Missouri
St. Louis, Missouri

Missouri Public
Service Commission

FILED DEC 01 2003

No Supplement to this tariff will be issued except for the purpose of canceling this tariff.

Missouri Portion-
Blytheville, Arkansas, Exchange
12th Revised Sheet 1.01
Replacing 11th Revised Sheet 1.01

SOUTHWESTERN BELL TELEPHONE COMPANY
LOCAL EXCHANGE TARIFF

Missouri Public
Service Commission

1.2 RATES (cont'd)

REC'D OCT 15 2002

1.2.1 Within the Base Rate Area, As shown on The Related Exchange Area Map: (cont'd)

<u>Class of Service</u>	<u>Current Monthly Rates(1)</u>
Urban Service (cont'd)	
Residence	
Flat Rate -	
One-Party Line	\$12.41(CR)
Multiline	15.00
PBX Trunk	15.00

CANCELLED

DEC 01 2003
by 134RS1.01
Public Service Commission
MISSOURI

Missouri Public
Service Commission

(1) See Sheet 2 for maximum allowable rates.

FILED DEC 01 2002

Issued: October 15, 2002

Effective: December 1, 2002

By CINDY BRINKLEY, President-Missouri
Southwestern Bell Telephone, L.P., d/b/a Southwestern Bell Telephone Company
St. Louis, Missouri

No supplement to this tariff will be issued except for the purpose of canceling this tariff.

MISSOURI PORTION- BLYTHEVILLE,
ARKANSAS, EXCHANGE
11th Revised Sheet 1.01
Replacing 10th Revised Sheet 1.01

SOUTHWESTERN BELL TELEPHONE COMPANY
LOCAL EXCHANGE TARIFF

Missouri Public

REC'D OCT 01 2001

1.2 RATES-(Continued)

1.2.1 Within the Base Rate Area, As shown on The Related Exchange Area Map-(Continued):

Service Commission

CLASS OF SERVICE

CURRENT MONTHLY RATES (1)

Urban Service-(Continued)

Residence

Flat Rate -

One-Party Line

\$12.30(CR)

Multiline

15.00

PBX Trunk

15.00

CANCELLED

DEC 01 2002

124NRS 1.01
Public Service Commission
MISSOURI

(1) See Sheet 2 for maximum allowable rates.

Issued: October 1, 2001

Effective: December 1, 2001

By JAN NEWTON, President-Missouri
Southwestern Bell Telephone Company
St. Louis, Missouri

Missouri Public

FILED DEC 01 2001

Service Commission

No supplement to this tariff will be issued except for the purpose of canceling this tariff.

MISSOURI PORTION- BLYTHEVILLE, ARKANSAS, EXCHANGE
10th Revised Sheet 1.01
Replacing 9th Revised Sheet 1.01

SOUTHWESTERN BELL TELEPHONE COMPANY **Missouri Public Service Commission**
LOCAL EXCHANGE TARIFF

1.2 RATES-(Continued)

REC'D OCT 02 2000

1.2.1 Within the Base Rate Area, As shown on The Related Exchange Area Map-(Continued):

(AT) CLASS OF SERVICE CURRENT MONTHLY RATES (1)

Urban Service-(Continued)

(RT)
|
(RT)

(DR)
|
(DR)

Residence	
Flat Rate -	
One-Party Line	\$12.39(CR)
Multiline	15.00
PBX Trunk	15.00

CANCELLED

DEC 01 2001

By *11/4/RS* #1.01
Public Service Commission
MISSOURI

Missouri Public Service Commission

FILED DEC 01 2000

(RT)
(RT)
(CT)

(1) See Sheet 2 for maximum allowable rates.

Issued: October 2, 2000

Effective: December 1, 2000

By JAN NEWTON, President-Missouri
Southwestern Bell Telephone Company
St. Louis, Missouri

No supplement to this tariff will be issued except for the purpose of canceling this tariff.

RECEIVED
 MISSOURI PORTION-BLYTHEVILLE,
 ARKANSAS, EXCHANGE
 9th Revised Sheet 1.01
 Replacing 8th Revised Sheet 1.01

SOUTHWESTERN BELL TELEPHONE COMPANY
 LOCAL EXCHANGE TARIFF

MISSOURI
Public Service Commission

1.2 RATES-(Continued)

1.2.1 Within The Base Rate Area, As Shown On The Related Exchange Area Map:-
 (Continued)

Class of Service	Monthly Rates
Urban Service-(Continued)	
Semi-Public Rate -	
One-Party Line (1)	\$15.43
Extension Line (2), each	
Regular	
Rotary Dial	1.90
TOUCH-TONE Dial	3.45
With Coin-Collecting Device (2)	
Rotary Dial	4.05
TOUCH-TONE Dial	4.80
Residence	
Flat Rate -	
One-Party Line	12.51
	(DR)
Multiline	15.00
PBX Trunk	15.00

(RT)

CANCELLED

DEC 01 2000
 By 10th RSI.01
 Public Service Commission
 MISSOURI

- (1) Local messages originating at semi-public and public telephone are charged at 10 cents each.
- (2) Obsolete-applicable to existing installations at existing locations for existing customers.

FILED

Issued: FEB 07 1997

Effective: ~~MAR 17 1997~~ MAR 17 1997

By KAREN JENNINGS, President-Missouri
 Southwestern Bell Telephone Company
 St. Louis, Missouri

MO.PUBLICSERVICECOMM

No supplement to this tariff will be issued except for the purpose of canceling this tariff.

MISSOURI PORTION-BLYTHEVILLE,
 ARKANSAS, EXCHANGE
 8th Revised Sheet 1.01
 Replacing 7th Revised Sheet 1.01

SOUTHWESTERN BELL TELEPHONE COMPANY
 LOCAL EXCHANGE TARIFF

1.2 RATES-(Continued)

1.2.1 Within The Base Rate Area, As Shown On The Related Exchange Area Map:-
 (Continued)

<u>Class of Service</u>	<u>Monthly Rates</u>
Urban Service-(Continued)	
Semi-Public Rate -	
One-Party Line(1)	(CR) \$15.43
Extension Line(2), each	
Regular	
Rotary Dial	(CR) 1.90
TOUCH-TONE Dial	(CR) 3.45
With Coin-Collecting Device(2)	
Rotary Dial	(CR) 4.05
TOUCH-TONE Dial	(CR) 4.80
Residence	
Flat Rate -	
One-Party Line	(CR) 12.51
Two-Party Line	(CR) 10.00
Multiline.	(CR) 15.00
(DR) PBX Trunk.	15.00
(NR)	

CANCELLED

MAR 17 1987
 9th P.S. # 1.01
 Public Service Commission
 MISSOURI

- (1) Local messages originating at semi-public and public telephones are charged at 10 cents each.
- (2) Obsolete-applicable to existing installations at existing locations for existing customers.

Issued: AUG 25 1988

Effective: ~~SEP 20 1988~~ **FILED**
 DEC 1 1988

By R. D. Barron, President-Missouri Division
 Southwestern Bell Telephone Company
 St. Louis, Missouri

DEC 1 1988

Public Service Commission

No Supplement to this tariff will be issued except for the purpose of canceling this tariff.

Missouri Portion-
Blytheville, Arkansas, Exchange
11th Revised Sheet 1.02
Replacing 10th Revised Sheet 1.02

(RT)

LOCAL EXCHANGE TARIFF

1.2. RATES (cont'd)

1.2.1 Within the Base Rate Area, As shown on The Related Exchange Area Map: (cont'd)

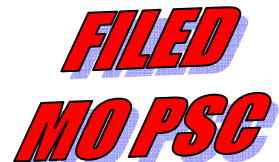
<u>Class of Service</u>	<u>Current Monthly Rates(4)</u>
Suburban Service (1)	
Flat Rate -	
Business – 4-Party (3)	\$19.68(CR)
Residence – 4-Party (3)	8.94(CR)
Rural Service (1)	
Flat Rate -	
Business – 4-Party (2)	22.35(CR)
Residence – 4-Party (2)	11.64(CR)

- (1) Applicable where service offered.
- (2) Rate applicable only in an area six to nine miles beyond the base rate area. Beyond nine miles, but not more than 12 miles beyond the base rate area, an additional 24 cent monthly charge applies. Beyond 12 miles from the base rate area, an additional 24 cent monthly charge applies.
- (3) Beyond three miles airline distance of the base rate area boundary, additional monthly charges apply per main suburban telephone—24 cents per one-half mile or fraction thereof airline distance.
- (4) See Sheet 2 for maximum allowable rates.

Issued: October 17, 2005

Effective: December 1, 2005

By CINDY BRINKLEY, President-SBC Missouri
Southwestern Bell Telephone, L.P., d/b/a SBC Missouri
St. Louis, Missouri



No Supplement to this tariff will be issued except for the purpose of canceling this tariff.

Missouri Portion-
Blytheville, Arkansas, Exchange
10th Revised Sheet 1.02
Replacing 9th Revised Sheet 1.02

SOUTHWESTERN BELL TELEPHONE COMPANY
LOCAL EXCHANGE TARIFF

1.2. RATES (cont'd)

1.2.1 Within the Base Rate Area, As shown on The Related Exchange Area Map: (cont'd)

<u>Class of Service</u>	<u>Current Monthly Rates(4)</u>
Suburban Service (1)	
Flat Rate -	
Business - 4-Party (3)	\$20.08(CR)
Residence - 4-Party (3)	9.12(CR)
Rural Service (1)	
Flat Rate -	
Business - 4-Party (2)	22.79(CR)
Residence - 4-Party (2)	11.87(CR)

CANCELLED

DEC 01 2005

By 114th RS 1.02
Public Service Commission
MISSOURI

- (1) Applicable where service offered.
- (2) Rate applicable only in an area six to nine miles beyond the base rate area. Beyond nine miles, but not more than 12 miles beyond the base rate area, an additional 24 (CR) cent monthly charge applies. Beyond 12 miles from the base rate area, an additional 24 (CR) cent monthly charge applies.
- (3) Beyond three miles airline distance of the base rate area boundary, additional monthly charges apply per main suburban telephone—24(CR) cents per one-half mile or fraction thereof airline distance.
- (4) See Sheet 2 for maximum allowable rates.

Issued: October 15, 2004

Effective: December 1, 2004

By CINDY BRINKLEY, President-SBC Missouri
Southwestern Bell Telephone, L.P., d/b/a SBC Missouri
St. Louis, Missouri

**FILED
MO PSC**

No Supplement to this tariff will be issued except for the purpose of canceling this tariff.

Missouri Portion-
Blytheville, Arkansas, Exchange
9th Revised Sheet 1.02
Replacing 8th Revised Sheet 1.02
Missouri Public

SOUTHWESTERN BELL TELEPHONE COMPANY
LOCAL EXCHANGE TARIFF

REC'D OCT 15 2003

1.2. RATES (cont'd)

1.2.1 Within the Base Rate Area, As shown on The Related Exchange Area Map: (cont'd) *Services Commission*

<u>Class of Service</u>	<u>Current Monthly Rates(4)</u>
Suburban Service (1)	
Flat Rate -	
Business - 4-Party (3)	\$20.63(CR)
Residence - 4-Party (3)	9.37
Rural Service (1)	
Flat Rate -	
Business - 4-Party (2)	23.42(CR)
Residence - 4-Party (2)	12.20(CR)

CANCELLED

DEC 01 2004
By *law* S1.02
Public Service Commission
MISSOURI

- (1) Applicable where service offered.
- (2) Rate applicable only in an area six to nine miles beyond the base rate area. Beyond nine miles, but not more than 12 miles beyond the base rate area, an additional 25 cent monthly charge applies. Beyond 12 miles from the base rate area, an additional 25 cent monthly charge applies.
- (3) Beyond three miles airline distance of the base rate area boundary, additional monthly charges apply per main suburban telephone—25 cents per one-half mile or fraction thereof airline distance.
- (4) See Sheet 2 for maximum allowable rates.

Issued: October 15, 2003

Effective: December 1, 2003

By CINDY BRINKLEY, President-SBC Missouri
Southwestern Bell Telephone, L.P., d/b/a SBC Missouri
St. Louis, Missouri

Missouri Public
Service Commission

FILED DEC 01 2003

No Supplement to this tariff will be issued except for the purpose of canceling this tariff.

Missouri Portion-
Blytheville, Arkansas, Exchange
8th Revised Sheet 1.02
Replacing 7th Revised Sheet 1.02

SOUTHWESTERN BELL TELEPHONE COMPANY **Missouri Public Service Commission**
LOCAL EXCHANGE TARIFF

1.2. RATES (cont'd)

REC'D OCT 15 2002

1.2.1 Within the Base Rate Area, As shown on The Related Exchange Area Map: (cont'd)

(AT)

<u>Class of Service</u>	<u>Current Monthly Rates(4)</u>
Suburban Service (1)	
Flat Rate -	
Business - 4-Party (3)	\$20.64(CR)
Residence - 4-Party (3)	9.37(CR)
Rural Service (1)	
Flat Rate -	
Business - 4-Party (2)	23.43(CR)
Residence - 4-Party (2)	12.21(CR)

CANCELLED

DEC 01 2003
9th BSI.02
Public Service Commission

Missouri Public Service Commission

FILED DEC 01 2002

- (1) Applicable where service offered.
- (2) Rate applicable only in an area six to nine miles beyond the base rate area. Beyond nine miles, but not more than 12 miles beyond the base rate area, an additional 25 cent monthly charge applies. Beyond 12 miles from the base rate area, an additional 25 cent monthly charge applies.
- (3) Beyond three miles airline distance of the base rate area boundary, additional monthly charges apply per main suburban telephone—25 cents per one-half mile or fraction thereof airline distance.
- (4) See Sheet 2 for maximum allowable rates.

Issued: October 15, 2002

Effective: December 1, 2002

By CINDY BRINKLEY, President-Missouri
Southwestern Bell Telephone, L.P., d/b/a Southwestern Bell Telephone Company
St. Louis, Missouri

No supplement to this tariff will be issued except for the purpose of canceling this tariff.

MISSOURI PORTION- BLYTHEVILLE,
ARKANSAS, EXCHANGE
7th Revised Sheet 1.02
Replacing 6th Revised Sheet 1.02

SOUTHWESTERN BELL TELEPHONE COMPANY
LOCAL EXCHANGE TARIFF

Missouri Public

REC'D OCT 01 2001

1.2 RATES-(Continued)

Service Commission

1.2.2 Outside The Base Rate Area, But Within The Exchange Area:

Current Monthly Rates (4)

Suburban Service (1)

Flat Rate -

Business - 4-Party (3)
Residence - 4-Party (3)

\$20.46(CR)
9.29(CR)

Rural Service (1)

Flat Rate -

Business - 4-Party (2)
Residence - 4-Party (2)

23.22(CR)
12.10(CR)

CANCELLED

DEC 01 2002
8:41 RSI.02
Missouri Service Commission
MISSOURI

- (1) Applicable where service offered.
- (2) Rate applicable only in an area six to nine miles beyond the base rate area. Beyond nine miles, but not more than 12 miles beyond the base rate area, an additional 25 cent monthly charge applies. Beyond 12 miles from the base rate area, an additional 25 cent monthly charge applies.
- (3) Beyond three miles airline distance of the base rate area boundary, additional monthly charges apply per main suburban telephone—25 cents per one-half mile or fraction thereof airline distance.
- (4) See Sheet 2 for maximum allowable rates.

Issued: October 1, 2001

Effective: December 1, 2001

By JAN NEWTON, President-Missouri
Southwestern Bell Telephone Company
St. Louis, Missouri

Missouri Public

FILED DEC 01 2001

Service Commission

No supplement to this tariff will be issued except for the purpose of canceling this tariff.

MISSOURI PORTION- BLYTHEVILLE, ARKANSAS, EXCHANGE
6th Revised Sheet 1.02
Replacing 5th Revised Sheet 1.02

SOUTHWESTERN BELL TELEPHONE COMPANY LOCAL EXCHANGE TARIFF
Missouri Public Service Commission

1.2 RATES-(Continued)

REC'D OCT 02 2000

1.2.2 Outside The Base Rate Area, But Within The Exchange Area:

(AT)

Current Monthly Rates (4)

Suburban Service (1)

Flat Rate -

Business - 4-Party (3)	\$20.61(CR)
Residence - 4-Party (3)	9.36(CR)

Rural Service (1)

Flat Rate -

Business - 4-Party (2)	23.40(CR)
Residence - 4-Party (2)	12.19(CR)

CANCELLED

DEC 01 2001
By THRS 1.02
Public Service Commission
MISSOURI

- (1) Applicable where service offered.
- (2) Rate applicable only in an area six to nine miles beyond the base rate area. Beyond nine miles, but not more than 12 miles beyond the base rate area, an additional 25 cent monthly charge applies. Beyond 12 miles from the base rate area, an additional 25 cent monthly charge applies.
- (3) Beyond three miles airline distance of the base rate area boundary, additional monthly charges apply per main suburban telephone—25 cents per one-half mile or fraction thereof airline distance.
- (4) See Sheet 2 for maximum allowable rates.

(AT)

Issued: October 2, 2000

Effective: December 1, 2000

By JAN NEWTON, President-Missouri
Southwestern Bell Telephone Company
St. Louis, Missouri

Missouri Public Service Commission

FILED DEC 01 2000

No supplement to this tariff will be issued except for the purpose of canceling this tariff.

MISSOURI PORTION-BLYTHEVILLE, ARKANSAS, EXCHANGE
5th Revised Sheet 1.02
Replacing 4th Revised Sheet 1.02

SOUTHWESTERN BELL TELEPHONE COMPANY
LOCAL EXCHANGE TARIFF

1.2 RATES--(Continued)

1.2.2 Outside The Base Rate Area, But Within The Exchange Area:

<u>Class of Service</u>	<u>Monthly Rates</u>
Suburban Service(1)	
Flat Rate -	
Business - 4-Party(3)	(CR) \$20.80
Residence - 4-Party(3).	(CR) 9.45
Rural Service(1)	
Flat Rate -	
Business - 4-Party(2)	(CR) 23.62
Residence - 4-Party(2).	(CR) 12.30

CANCELLED

DEC 01 2000

By 6th RSI.02
Public Service Commission
MISSOURI

(RT)

- (FC) (1) Applicable where service is offered.
- (FC) (2) Rate applicable only in an area six to nine miles beyond the base rate area. Beyond nine miles, but not more than 12 miles beyond the base rate area, an additional 25-cent monthly charge applies. Beyond 12 miles from the base rate area, an additional 25-cent monthly charge applies.
- (FC) (3) Beyond three miles airline distance of the base rate area boundary, additional monthly charges apply per main suburban telephone--25 cents per one-half mile or fraction thereof airline distance.

Issued: AUG 25 1988

Effective: ~~SEP 01 1988~~
DEC 1 1988

FILED

DEC 1 1988

By R. D. BARRON, President-Missouri Division
Southwestern Bell Telephone Company
St. Louis, Missouri

Public Service Commission

P.S.C. Mo. - No. 17

Missouri Portion-

Southwestern Bell Telephone, L.P.
d/b/a AT&T Missouri

Blytheville, Arkansas Exchange
7th Revised Sheet 2
Replacing 6th Revised Sheet 2

LOCAL EXCHANGE TARIFF

1.2. RATES (cont'd)

1.2.1 Within the Base Rate Area, As shown on The Related Exchange Area Map: (cont'd)

<u>Class of Service</u>	<u>Maximum Rates</u>
Urban Service	
Business	
Flat Rate -	
One-Party Line	\$24.77(CR)
Residence	
Flat Rate -	
One-Party Line	11.86(CR)
Lifeline(1)	8.57
Suburban Service	
Flat Rate -	
Business – 4-Party	19.72(CR)
Residence – 4-Party	8.96(CR)
Rural Service	
Flat Rate -	
Business – 4-Party	22.40(CR)
Residence – 4-Party	11.67(CR)

(1) See P.S.C. Mo. – No. 24, Local Exchange Tariff, Section 1.2.2.E, for description, terms and conditions related to Lifeline Service.

Issued: October 17, 2006

Effective: December 1, 2006

By CINDY BRINKLEY, President – Missouri
St. Louis, Missouri

No Supplement to this tariff will be issued except for the purpose of canceling this tariff.

Missouri Portion-
Blytheville, Arkansas, Exchange
6th Revised Sheet 2
Replacing 5th Revised Sheet 2

(RT)

LOCAL EXCHANGE TARIFF

1.2. RATES (cont'd)

1.2.1 Within the Base Rate Area, As shown on The Related Exchange Area Map: (cont'd)

<u>Class of Service</u>	<u>Maximum Rates</u>
Urban Service	
Business	
Flat Rate -	
One-Party Line	\$24.71(CR)
Residence	
Flat Rate -	
One-Party Line	11.83(CR)
Lifeline(1)	8.57
Suburban Service	
Flat Rate -	
Business – 4-Party	19.68(CR)
Residence – 4-Party	8.94(CR)
Rural Service	
Flat Rate -	
Business – 4-Party	22.35(CR)
Residence – 4-Party	11.64(CR)

(1) See P.S.C. Mo. – No. 24, Local Exchange Tariff, Section 1.2.2.E, for description, terms and conditions related to Lifeline Service.

Issued: October 17, 2005

Effective: December 1, 2005

By CINDY BRINKLEY, President-SBC Missouri
Southwestern Bell Telephone, L.P., d/b/a SBC Missouri
St. Louis, Missouri

Cancelled

December 1, 2006

Missouri Public
Service Commission

Filed

Missouri Public
Service Commission

No Supplement to this tariff will be issued except for the purpose of canceling this tariff.

Missouri Portion-
Blytheville, Arkansas, Exchange
5th Revised Sheet 2
Replacing 4th Revised Sheet 2

SOUTHWESTERN BELL TELEPHONE COMPANY
LOCAL EXCHANGE TARIFF

1.2. RATES (cont'd)

1.2.1 Within the Base Rate Area, As shown on The Related Exchange Area Map: (cont'd)

<u>Class of Service</u>	<u>Maximum Rates</u>
Urban Service	
Business	
Flat Rate -	
One-Party Line	\$25.21(CR)
Residence	
Flat Rate -	
One-Party Line	12.07
Lifeline(1)	8.57
Suburban Service	
Flat Rate -	
Business - 4-Party	20.08
Residence - 4-Party	9.12
Rural Service	
Flat Rate -	
Business - 4-Party	22.79
Residence - 4-Party	11.87(CR)

CANCELLED

DEC 01 2005
By *67 RS 2*
Public Service Commission
MISSOURI

(1) See P.S.C. Mo. - No. 24, Local Exchange Tariff, Section 1.2.2.E, for description, terms and conditions related to Lifeline Service.

Issued: October 15, 2004

Effective: December 1, 2004

By CINDY BRINKLEY, President-SBC Missouri
Southwestern Bell Telephone, L.P., d/b/a SBC Missouri
St. Louis, Missouri

**FILED
MO PSC**

No Supplement to this tariff will be issued except for the purpose of canceling this tariff.

Missouri Portion-
Blytheville, Arkansas, Exchange
4th Revised Sheet 2
Replacing 3rd Revised Sheet 2
Missouri Public

SOUTHWESTERN BELL TELEPHONE COMPANY Service Commission
LOCAL EXCHANGE TARIFF

REC'D MAY 10 2004

1.2. RATES (cont'd)

1.2.1 Within the Base Rate Area, As shown on The Related Exchange Area Map: (cont'd)

(CT)	<u>Class of Service</u>	<u>Maximum Rates</u>
	Urban Service	
	Business	
	Flat Rate -	
	One-Party Line	\$25.90
	Residence	
	Flat Rate -	
	One-Party Line	12.40
(AT)	Lifeline(1)	8.90(NR)
	Suburban Service	
	Flat Rate -	
	Business - 4-Party	20.63
	Residence - 4-Party	9.37
	Rural Service	
	Flat Rate -	
	Business - 4-Party	23.42
	Residence - 4-Party	12.20

CANCELLED

DEC 01 2004
By *SHRS2*
Public Service Commission
MISSOURI

(RT)
(FC)(AT) (1) See P.S.C. Mo. - No. 24, Local Exchange Tariff, Section 1.2.2.E, for description, terms and conditions related to Lifeline Service.

Issued: May 10, 2004

Effective: June 9, 2004

By CINDY BRINKLEY, President-SBC Missouri
Southwestern Bell Telephone, L.P., d/b/a SBC Missouri
St. Louis, Missouri

Missouri Public
Service Commission

FILED JUN 09 2004

No Supplement to this tariff will be issued except for the purpose of canceling this tariff.

Missouri Portion-
Blytheville, Arkansas, Exchange
3rd Revised Sheet 2
Replacing 2nd Revised Sheet 2
MISSOURI Public

SOUTHWESTERN BELL TELEPHONE COMPANY
LOCAL EXCHANGE TARIFF

REC'D OCT 15 2003

1.2. RATES (cont'd)

1.2.1 Within the Base Rate Area, As shown on The Related Exchange Area Map: (cont'd)

Service Commission

<u>Class of Service</u>	<u>Current Monthly Rates(1)</u>
Urban Service	
Business	
Flat Rate -	
One-Party Line	\$25.90(CR)
Residence	
Flat Rate -	
One-Party Line	12.40(CR)
Suburban Service	
Flat Rate -	
Business - 4-Party	20.63(CR)
Residence - 4-Party	9.37
Rural Service	
Flat Rate -	
Business - 4-Party	23.42(CR)
Residence - 4-Party	12.20(CR)

CANCELLED

JUN 09 2004
by YMS
Public Service Commission
MISSOURI

(AT) (1) See Sheet 2 for maximum allowable rates.

Issued: October 15, 2003

Effective: December 1, 2003

By CINDY BRINKLEY, President-SBC Missouri
Southwestern Bell Telephone, L.P., d/b/a SBC Missouri
St. Louis, Missouri

Missouri Public
Service Commission

FILED DEC 01 2003

No Supplement to this tariff will be issued except for the purpose of canceling this tariff.

Missouri Portion-
Blytheville, Arkansas, Exchange
2nd Revised Sheet 2
Replacing 1st Revised Sheet 2

SOUTHWESTERN BELL TELEPHONE COMPANY
LOCAL EXCHANGE TARIFF

Missouri Public
Service Commission

1.2 RATES (cont'd)

REC'D OCT 15 2002

1.2.1 Within the Base Rate Area, As shown on The Related Exchange Area Map: (cont'd)

<u>Class of Service</u>	<u>Current Monthly Rates(1)</u>
Urban Service	
Business	
Flat Rate -	
One-Party Line	\$25.91(CR)
Residence	
Flat Rate -	
One-Party Line	12.41(CR)
Suburban Service	
Flat Rate -	
Business - 4-Party	20.64(CR)
Residence - 4-Party	9.37(CR)
Rural Service	
Flat Rate -	
Business - 4-Party	23.43(CR)
Residence - 4-Party	12.21(CR)

CANCELLED

DEC 01 2003
3rd RS 2
Missouri Public Service Commission
MISSOURI

Missouri Public
Service Commission

FILED DEC 01 2002

Issued: October 15, 2002

Effective: December 1, 2002

By CINDY BRINKLEY, President-Missouri
Southwestern Bell Telephone, L.P., d/b/a Southwestern Bell Telephone Company
St. Louis, Missouri

No supplement to this tariff will be issued except for the purpose of canceling this tariff.

MISSOURI PORTION- BLYTHEVILLE,
ARKANSAS, EXCHANGE
1st Revised Sheet 2
Replacing Original Sheet 2

Missouri Public

SOUTHWESTERN BELL TELEPHONE COMPANY
LOCAL EXCHANGE TARIFF

REC'D OCT 01 2001

1.2 RATES-(Continued)

Service Commission

Class of Service

Maximum Monthly Rates

Urban Service

Business

Flat Rate -

One-Party Line

\$25.68 (CR)

Residence

Flat Rate -

One-Party Line

12.30 (CR)

(RT)

Suburban Service

Flat Rate -

Business - 4-Party

20.46 (CR)

Residence - 4-Party

9.29 (CR)

Rural Service

Flat Rate -

Business - 4-Party

23.22 (CR)

Residence - 4-Party

12.10 (CR)

CANCELLED

DEC 01 2002

2nd RS 2
Missouri Public Service Commission
MISSOURI

Issued: October 1, 2001

Effective: December 1, 2001

By JAN NEWTON, President-Missouri
Southwestern Bell Telephone Company
St. Louis, Missouri

Missouri Public

FILED DEC 01 2001

Service Commission

No supplement to this tariff will be issued except for the purpose of canceling this tariff.

MISSOURI PORTION- BLYTHEVILLE, ARKANSAS, EXCHANGE
Original Sheet 2

SOUTHWESTERN BELL TELEPHONE COMPANY
LOCAL EXCHANGE TARIFF

Missouri Public Service Commission

REC'D OCT 02 2000

1.2 RATES-(Continued)

<u>Class of Service</u>	<u>Maximum Monthly Rates</u>
Urban Service	
Business	
Flat Rate -	
One-Party Line	\$25.87
Residence	
Flat Rate -	
One-Party Line	12.39
Two-Party Line	9.91
Suburban Service	
Flat Rate -	
Business - 4-Party	20.61
Residence - 4-Party	9.36
Rural Service	
Flat Rate -	
Business - 4-Party	23.40
Residence - 4-Party	12.19

CANCELLED

DEC 01 2000

by 15252
Public Service Commission
MISSOURI

Missouri Public Service Commission

FILED DEC 01 2000

Issued: October 2, 2000

Effective: December 1, 2000

By JAN NEWTON, President-Missouri
Southwestern Bell Telephone Company
St. Louis, Missouri

NO SUPPLEMENT TO THIS TARIFF WILL BE ISSUED EXCEPT FOR THE PURPOSE OF CANCELING THIS TARIFF.

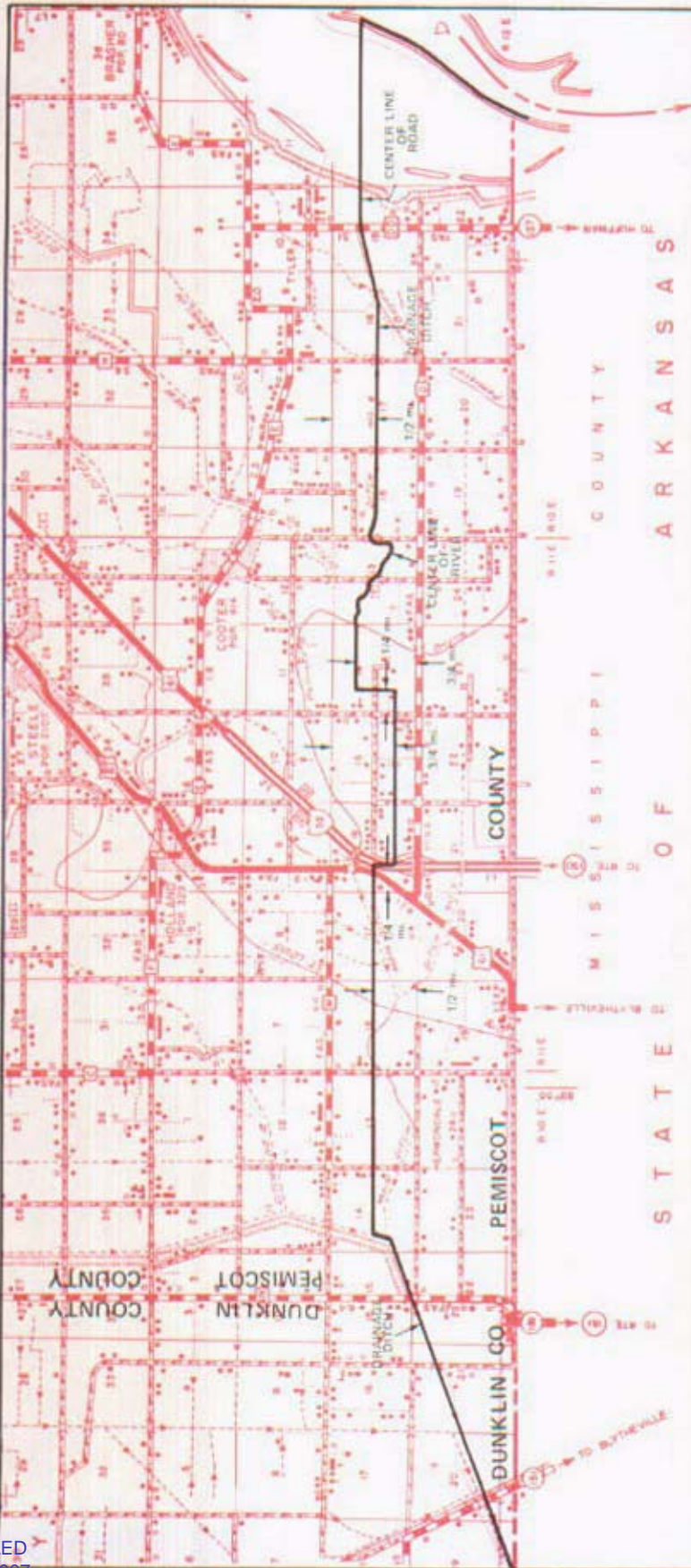
Missouri Portion Blytheville, Arkansas

P. S. C. Mo. No. 17 EXCHANGE AREA MAP

RECEIVED
10th REVISED SHEET 2
REPLACING 9th REVISED SHEET 2

SEP 25 1978

MISSOURI
Public Service Commission



R11E | R12E

R10E | R11E

FILED
APR 1 - 1979

Public Service Commission

CANCELLED
June 29, 2007
TO-2002-185
Missouri Public
Service Commission

T17N
T16N

By R. R. SHOCKLEY, Vice President, Missouri
Southwestern Bell Telephone Company

APR 1 - 1979

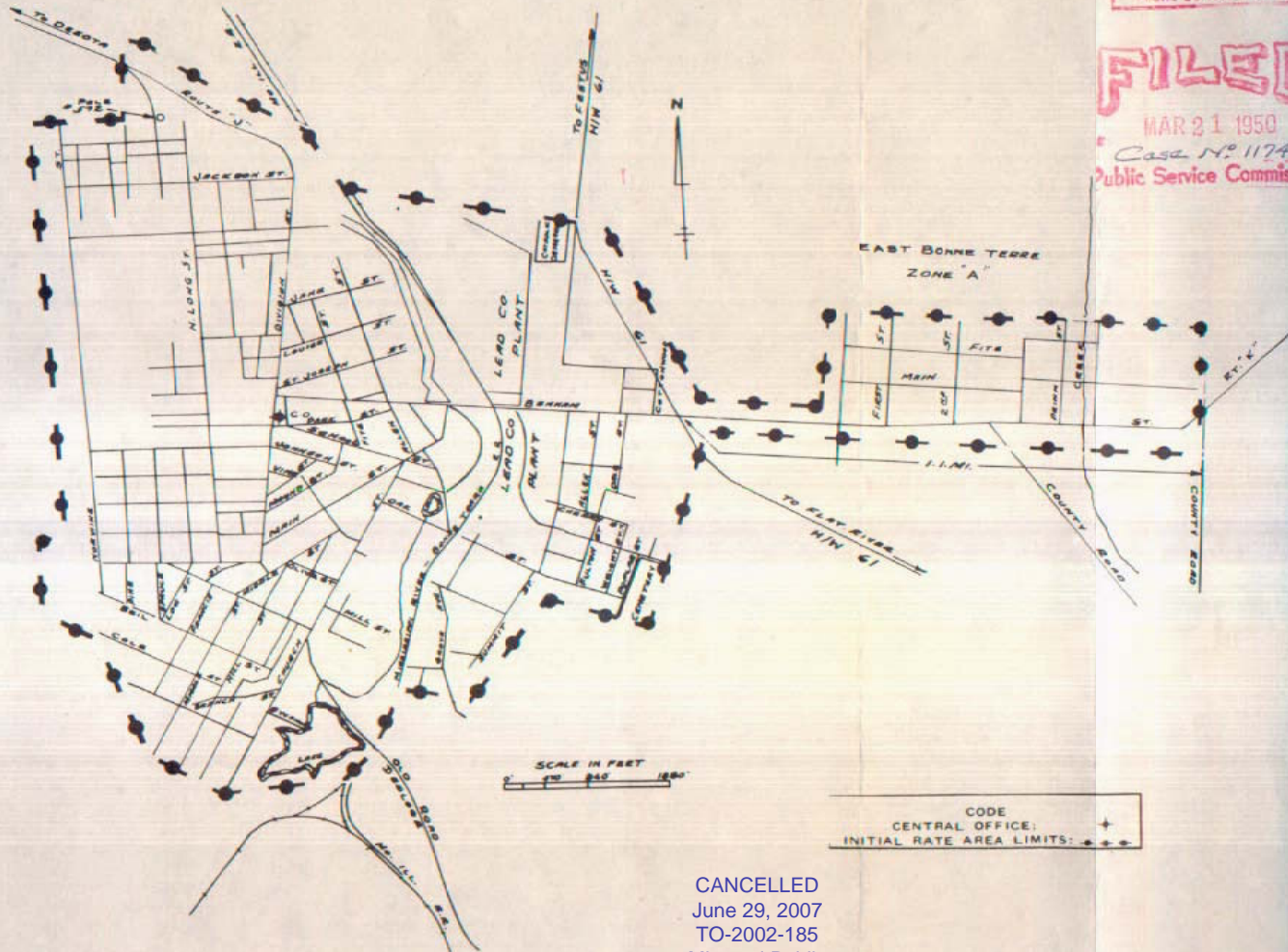
NO SUPPLEMENT TO THIS TARIFF WILL BE ISSUED EXCEPT FOR THE PURPOSE OF CANCELING THIS TARIFF.

Bonne Terre, Mo.
FIRST REVISED SHEET 1-A
REPLACING ORIGINAL SHEET 1-A

P. S. C. Mo. No. 2
SOUTHEAST MISSOURI TELEPHONE COMPANY
INITIAL RATE AREA MAP

RECEIVED
MAR 21 1950
MISSOURI
Public Service Comm.

FILED
MAR 21 1950
Case No. 11742
Public Service Commission



CANCELLED
June 29, 2007
TO-2002-185
Missouri Public
Service Commission

CANCELLED
June 29, 2007
TO-2002-185
Missouri Public
Service Commission

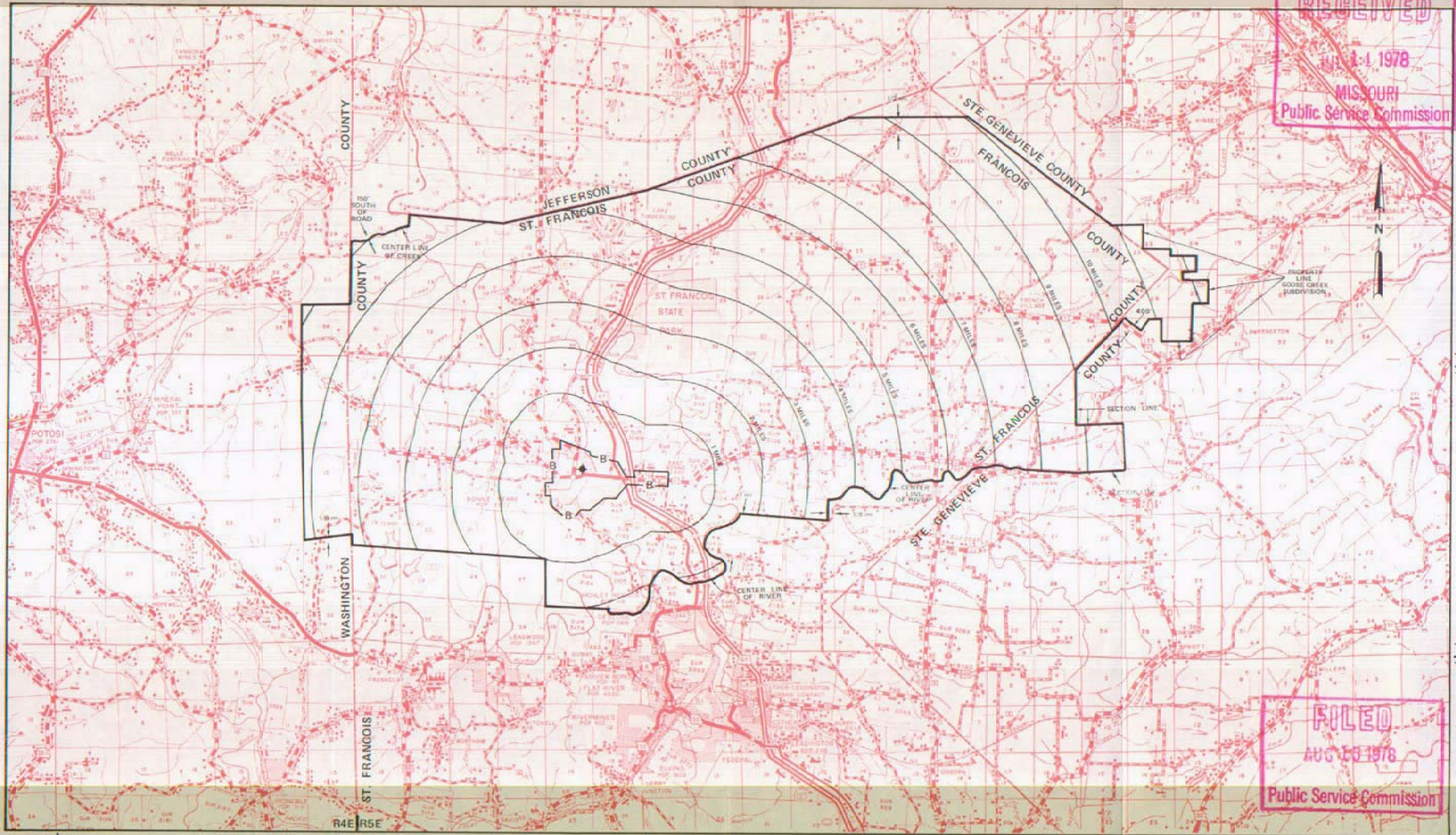
NO SUPPLEMENT TO THIS TARIFF WILL
BE ISSUED EXCEPT FOR THE PURPOSE OF
CANCELING THIS TARIFF.

P. S. C. Mo. No. 17
EXCHANGE AREA MAP

Bonne Terre, Missouri

8th REVISED SHEET 3
REPLACING 7th REVISED SHEET 3

RECEIVED
JUL 14 1978
MISSOURI
Public Service Commission



T39N
T38N

T38N
T37N

T37N
T36N

FILED
AUG 15 1978
Public Service Commission

R3E R4E

By R. R. SHOCKLEY, Vice President, Missouri
Southwestern Bell Telephone
St. Louis, Missouri

R5E R6E

R6E R7E

R7E R8E

Issued: JULY 14, 1978

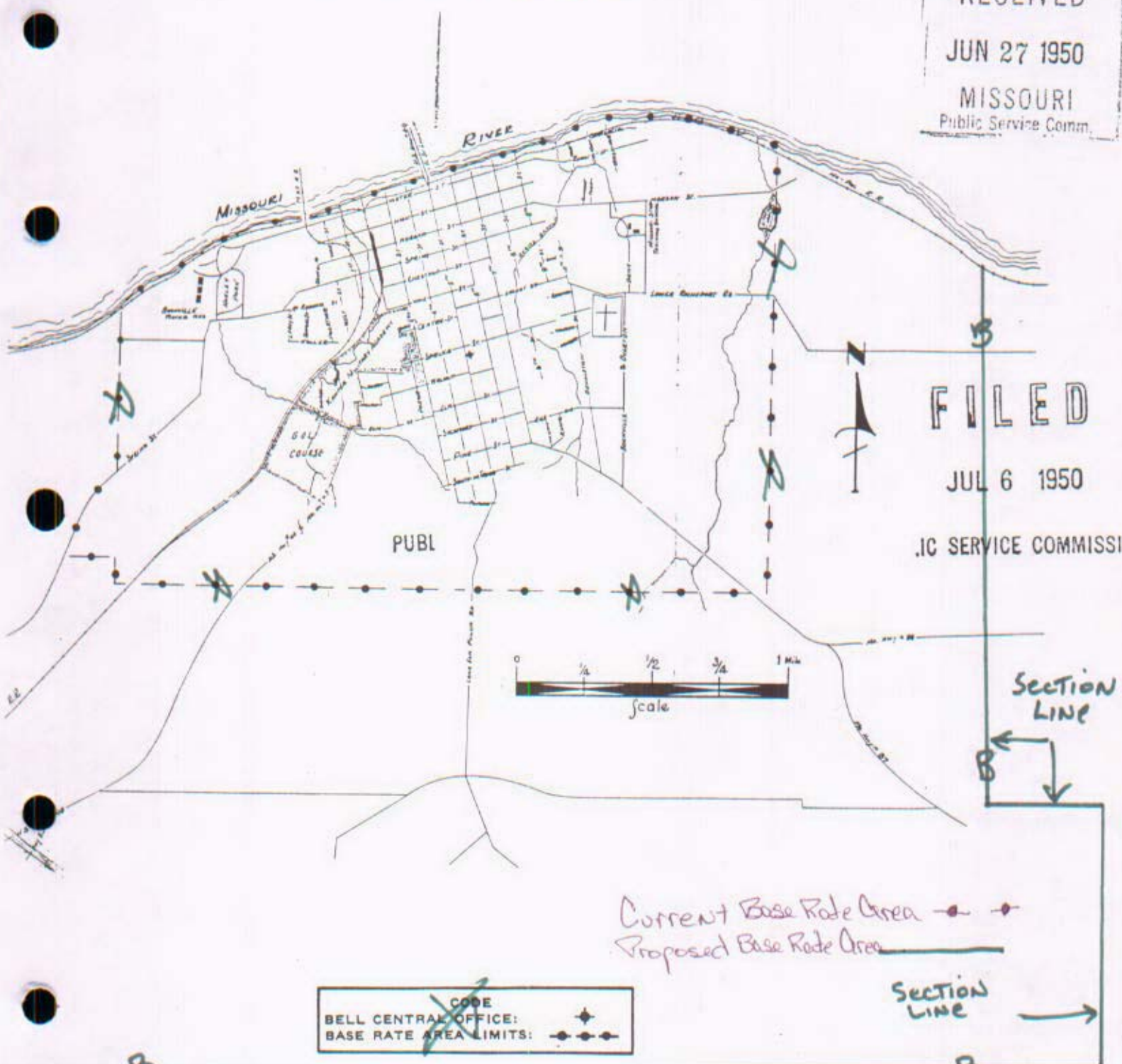
Effective: AUGUST 15, 1978

THIS TARIFF WILL
BE FOR THE PURPOSE OF
PUBLIC SERVICE COMMISSION

2nd Boonville, Missouri
FIRST REVISED SHEET 2
REPLACING ORIGINAL SHEET 2
1ST Revised

P. S. C.-Mo. No. 17
BASE RATE AREA MAP

RECEIVED
JUN 27 1950
MISSOURI
Public Service Comm.



FILED
JUL 6 1950
PUBLIC SERVICE COMMISSION

Current Base Rate Area —••—
Proposed Base Rate Area ———

CODE
BELL CENTRAL OFFICE: —◆—
BASE RATE AREA LIMITS: —••—

B 1/2 mile from Center of I-70 B

SEP 12 1998

Priscilla Hill-Arbin, President-Missouri
By H. R. TOWLES, General Manager
Southwestern Bell Telephone Company
St. Louis, Missouri

Effective: July 6, 1950
~~SEP 26 1998~~
OCT 12 1998

CANCELLED
June 29, 2007
TO-2002-185
Missouri Public
Service Commission

CANCELLED
June 29, 2007
TO-2002-185
Missouri Public
Service Commission

NO SUPPLEMENT TO THIS TARIFF WILL
BE ISSUED EXCEPT FOR THE PURPOSE OF
CANCELING THIS TARIFF.

P. S. C. Mo. No. 17
EXCHANGE AREA MAP

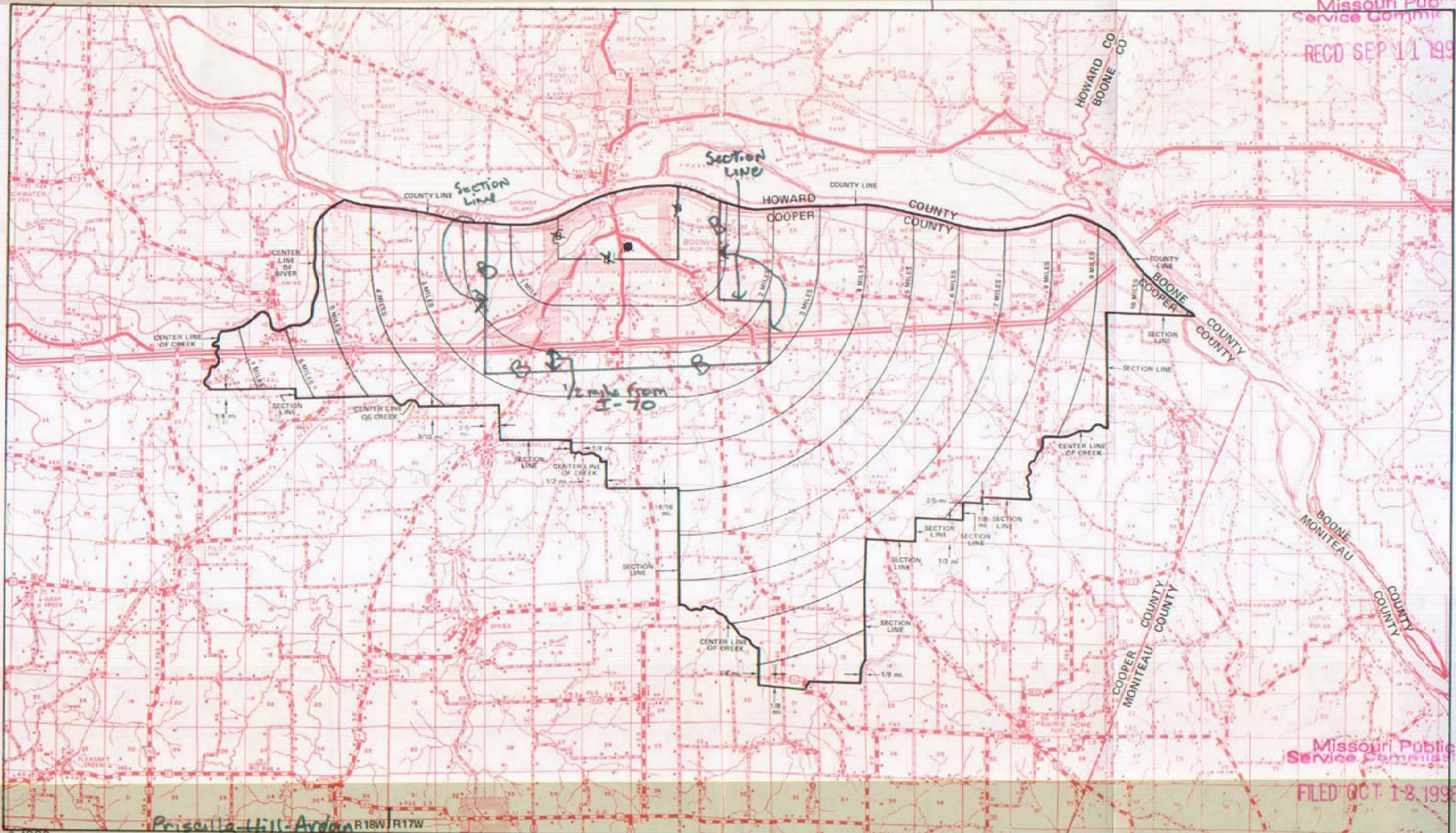
Current Base Rate Area — B —
Proposed Base Rate Area — 8 —

Boonville, Missouri

7th REVISED SHEET 3
REPLACING 7th REVISED SHEET 3

Missouri Public
Service Commission

RECD SEP 11 1998



T49N
T48N

T48N
T47N

Missouri Public
Service Commission

FILED OCT 1 8 1998

SEP 12 1998 R14W R18W

By R. R. SHOCKLEY, Vice President, Missouri
Southwestern Bell Telephone Company
St. Louis, Missouri

R17W R16W

R16W R15W

R15W R14W

OCT 1 8 1998
DEC 01 1998

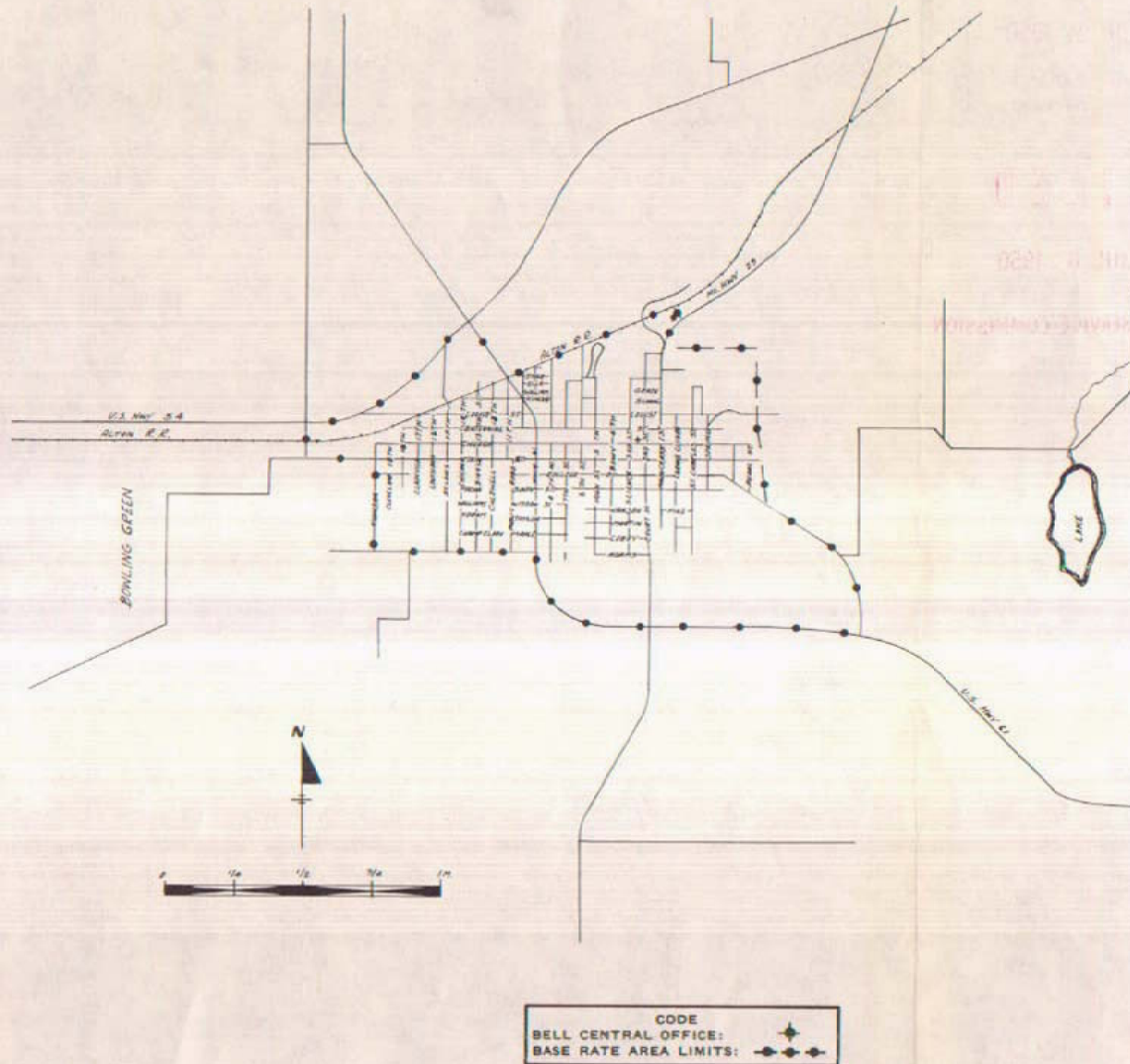
Effective: _____

Issued: August 26, 1997

NO SUPPLEMENT TO THIS TARIFF WILL
BE ISSUED EXCEPT FOR THE PURPOSE OF
CANCELING THIS TARIFF.

Bowling Green, Missouri
ORIGINAL SHEET 2
REPLACING ORIGINAL SHEET 1-A

P. S. C.-Mo. No. 17
BASE RATE AREA MAP



CANCELLED
June 29, 2007
TO-2002-185
Missouri Public
Service Commission

Issued: June 27, 1950

By H. R. TOWLES, General Manager
Southwestern Bell Telephone Company
St. Louis, Missouri

Effective: July 6, 1950

CANCELLED
June 29, 2007
TO-2002-185
Missouri Public
Service Commission

NO SUPPLEMENT TO THIS TARIFF WILL
BE ISSUED EXCEPT FOR THE PURPOSE OF
CANCELING THIS TARIFF.

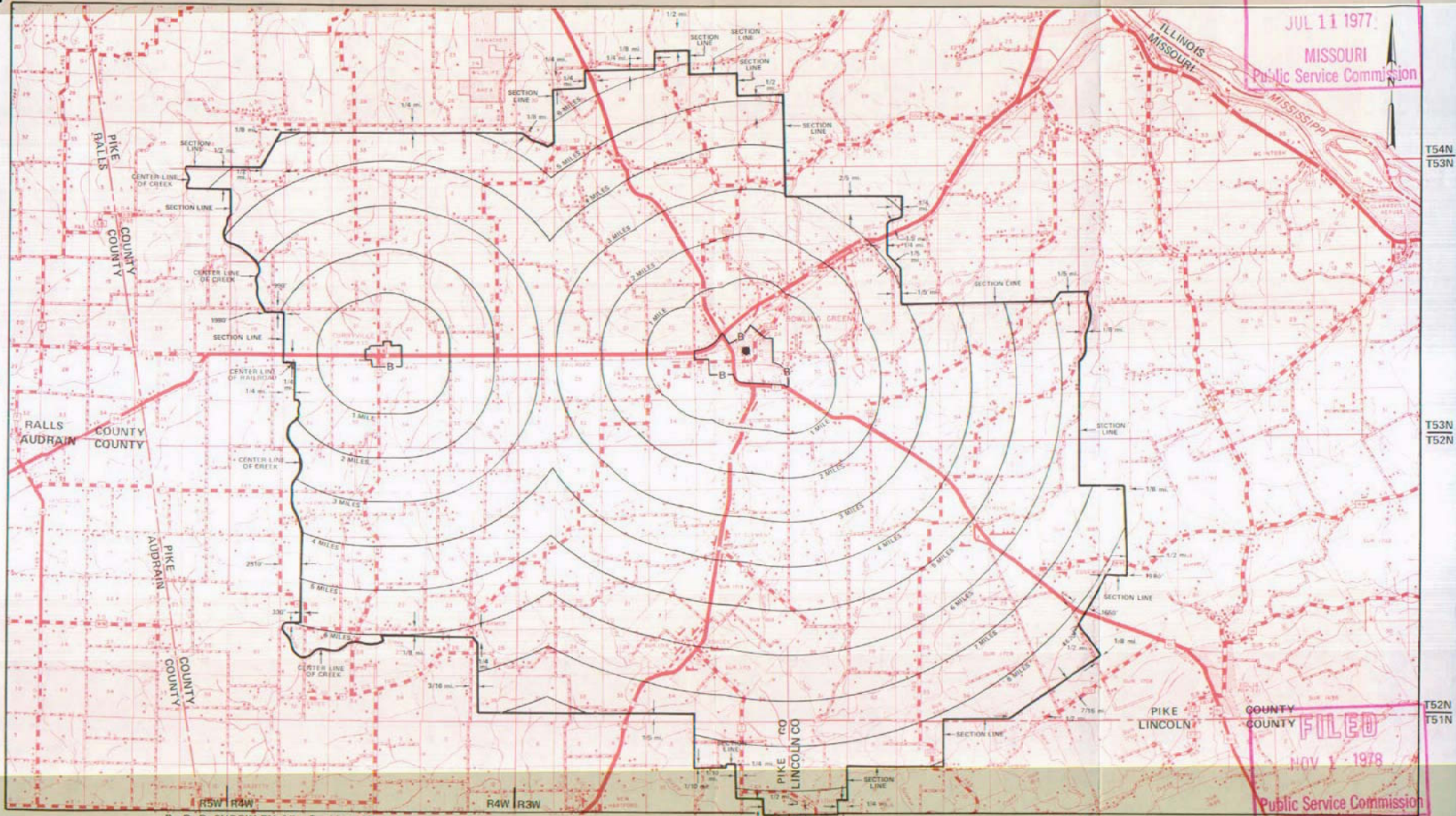
P. S. C. Mo. No. 17
EXCHANGE AREA MAP

Bowling Green, Missouri

RECEIVED
BIM REVISED SHEET
REPLACES BIM REVISED SHEET

JUL 11 1977

MISSOURI
Public Service Commission



By R. R. SHOCKLEY, Vice President, Missouri
Southwestern Bell Telephone Company
St. Louis, Missouri

Issued: July 11, 1977

FILED

NOV 1 1978

Public Service Commission

R1W R1E

Effective: NOV 1 - 1978

SBC PSC MO #17
Brookfield, Missouri
2nd Revised Sheet 2
Replacing 1st Sheet 2

Non-Scannable Map

(Is viewable in the Data Center
200 Madison Street, 1st Floor
Jefferson City MO)

NO SUPPLEMENT TO THIS TARIFF WILL BE ISSUED EXCEPT FOR THE PURPOSE OF CANCELING THIS TARIFF.

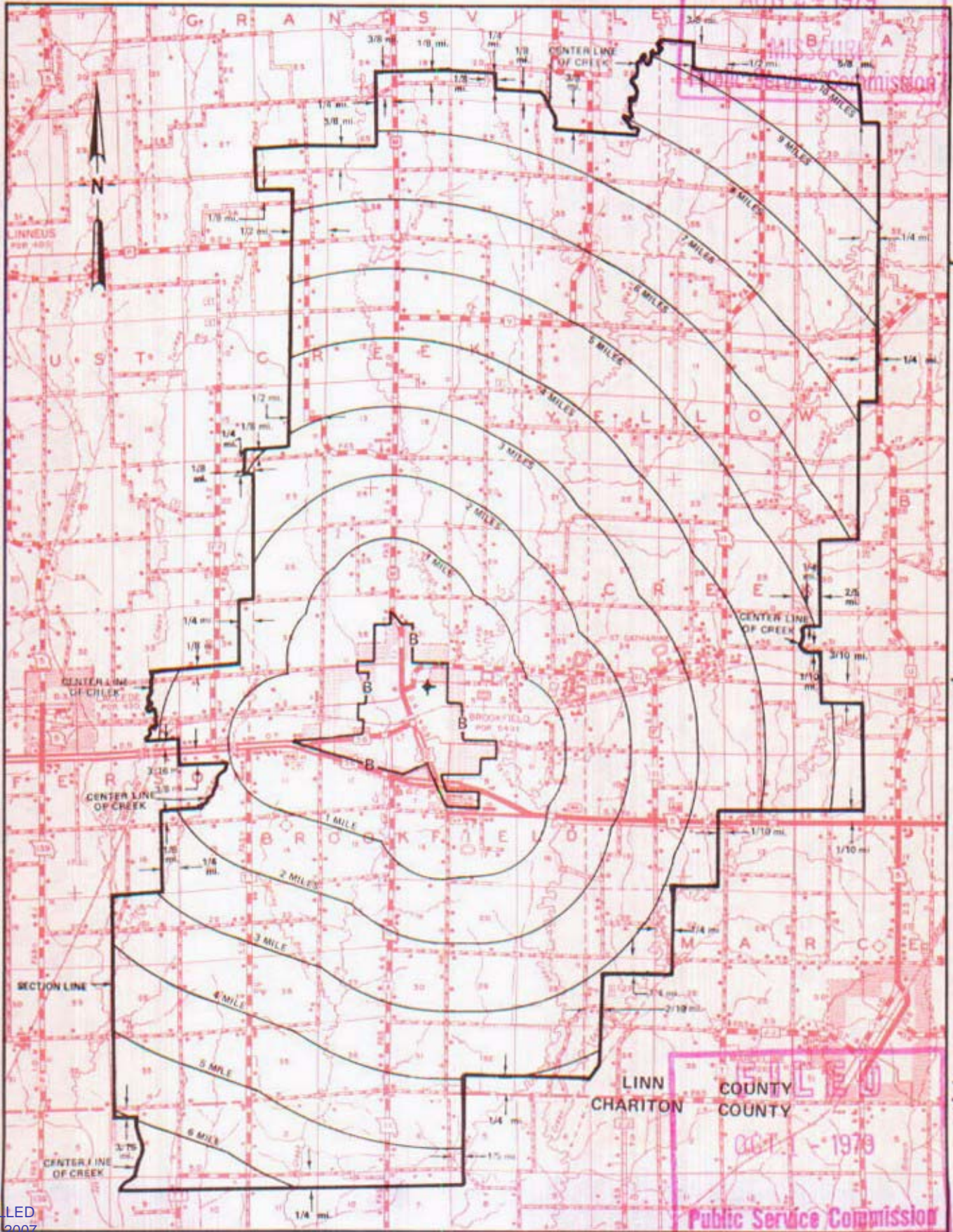
P. S. C. Mo. No. 17

EXCHANGE AREA MAP

Brookfield, Missouri

REPLACING 14th REVISED SHEET 3
16th REVISED SHEET 3

AUG 24 1979



CANCELLED
June 29, 2007
TO-202-185
Missouri Public
Service Commission

R20W | R19W
By R. R. SHOCKLEY, Vice President, Missouri
Southwestern Bell Telephone Company

R19W | R18W

OCT 1 1979