

No supplement to this tariff will be issued except for the purpose of canceling this tariff.

KANSAS CITY METROPOLITAN EXCHANGE
5th Revised Sheet 1
Replacing 4th Revised Sheet 1

RECEIVED

SOUTHWESTERN BELL TELEPHONE COMPANY
METROPOLITAN EXCHANGE TARIFF
Superseding All Tariffs Previously Issued

SEP 30 1993

I. Kansas City Metropolitan Exchange Service

MO. PUBLIC SERVICE COMM.

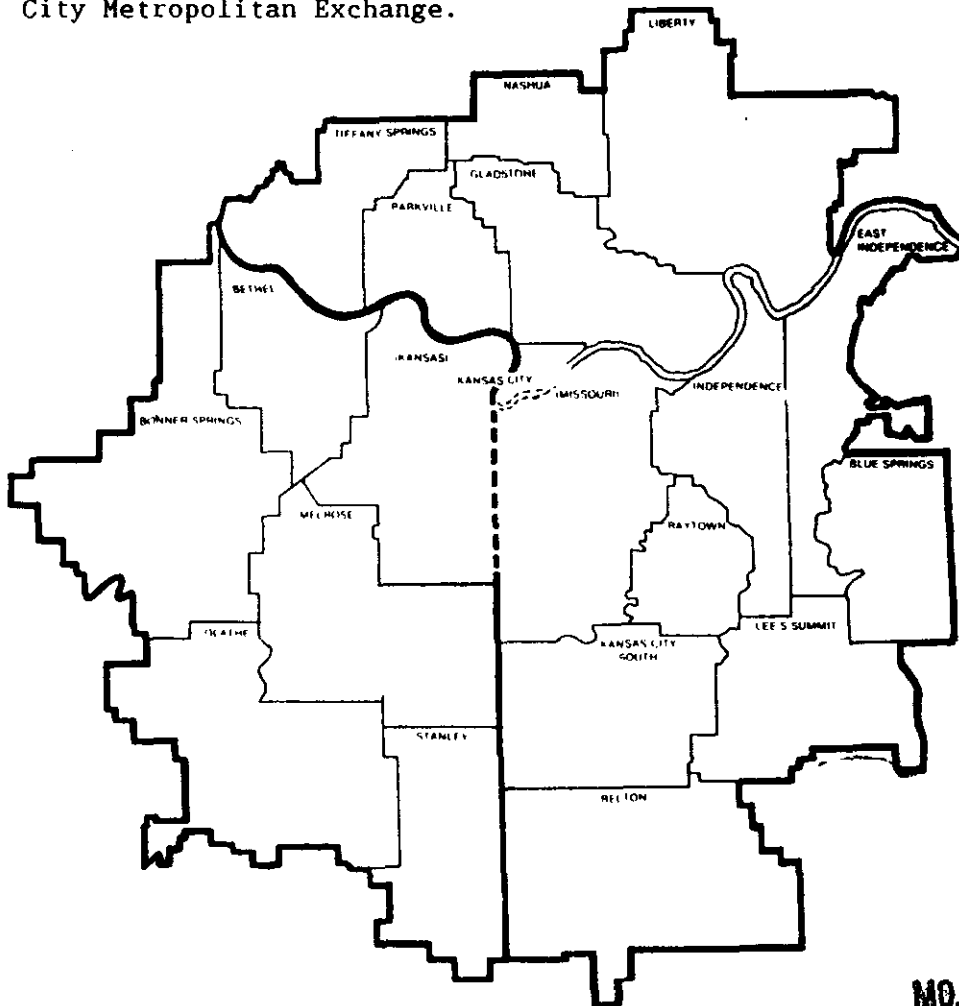
A. General

In the Kansas City Metropolitan Exchange there is a Principal Kansas City Zone, a group of Metropolitan Calling Area-1 (MCA-1) Zones and a group of Metropolitan Calling Area-2 (MCA-2) Zones. The rates specified for each zone in the Metropolitan Exchange entitle the customer to local service within the primary service area specified for that zone.

(CT)(RT)
(C)(CT)(RT)

B. Zones Included in the Metropolitan Exchange

The following schematic diagram shows the zones included in the Kansas City Metropolitan Exchange.



FILED

NOV 2 1993
92-306
MO. PUBLIC SERVICE COMM.

Issued: OCT 01 1993

Effective: NOV 02 1993

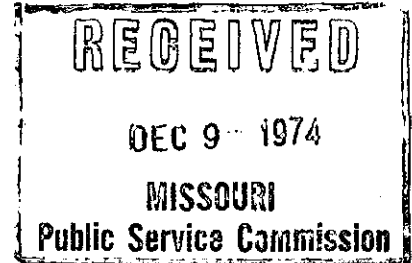
By D. R. KAESHOFER, Division Manager-Regulatory & Industry Relations
Southwestern Bell Telephone Company
St. Louis, Missouri

CANCELLED
June 29, 2007
TO-2002-185
Missouri Public
Service Commission

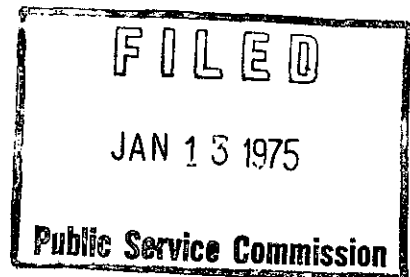
No supplement to this tariff will be issued except for the purpose of canceling this tariff.

Kansas City Metropolitan Exchange
13th Revised Sheet 2
Canceling 12th Revised Sheet 2
5th Revised Sheet 2-A
5th Revised Sheet 3-A
6th Revised Sheet 3-AA

METROPOLITAN EXCHANGE TARIFF



These sheets are withdrawn and are no longer in effect.



Issued: DEC 13 1974

Effective: JAN 13 1975

BY R. R. SHOCKLEY, Vice President, Missouri-Illinois
Southwestern Bell Telephone Company
St. Louis, Missouri

No supplement to this tariff will be issued except for the purpose of canceling this tariff.

SOUTHWESTERN BELL TELEPHONE COMPANY
METROPOLITAN EXCHANGE TARIFF
SUPERSEDING ALL TARIFFS PREVIOUSLY ISSUED

RECEIVED
OCT 14 1968
MISSOURI
Public Service Commission

Note: This sheet is canceled with the introduction of the wide area service plan.

FILED
JAN 11 1969
Public Service Commission

○ *Indicates removal of text.*

Issued: October 14, 1968

Effective: January 11, 1969

By R. R. SHOCKLEY, Vice President and General Manager

St. Louis, Missouri

No supplement to this tariff will be issued except for the purpose of canceling this tariff.

**SOUTHWESTERN BELL TELEPHONE COMPANY
METROPOLITAN EXCHANGE TARIFF**

SUPERSEDING ALL TARIFFS PREVIOUSLY ISSUED

○

RECEIVED
OCT 14 1968
MISSOURI
Public Service Commission

Note: This sheet is canceled with the introduction of the wide area service plan.

FILED
JAN 11 1969
Public Service Commission

○ *Indicates removal of text.*

Issued: October 14, 1968

Effective: January 11, 1969

By R. R. SHOCKLEY, Vice President and General Manager
St. Louis, Missouri

No supplement to this tariff will be issued except for the purpose of canceling this tariff.

SOUTHWESTERN BELL TELEPHONE COMPANY
METROPOLITAN EXCHANGE TARIFF
SUPERSEDING ALL TARIFFS PREVIOUSLY ISSUED

○

RECEIVED
OCT 14 1968
MISSOURI
Public Service Commission

Note: This sheet is canceled with the introduction of the wide area service plan.

FILED
JAN 11 1969
Public Service Commission

○ *Indicates removal of text.*

Issued: October 14, 1968

Effective: January 11, 1969

By R. R. SHOCKLEY, Vice President and General Manager

St. Louis, Missouri

No supplement to this tariff will be issued except for the purpose of canceling this tariff.

P.S.C. Mo.—No.17

KANSAS CITY METROPOLITAN EXCHANGE

4th Revised Sheet 4-A

Replacing 3rd Revised Sheet 4-A

RECEIVED

DEC 10 1968

MISSOURI

Public Service Commission

The information previously contained on this sheet is now reflected in the "Message Toll Telephone Service" section of the General Toll Tariff.

For any rates or practices relating to two-point exception services, refer to the General Toll Tariff.

FILED

JAN 11 1969

Public Service Commission

Issued: December 11, 1968

Effective: January 11, 1969

By R. R. SHOCKLEY, Vice President and General Manager
Southwestern Bell Telephone Company
St. Louis, Missouri

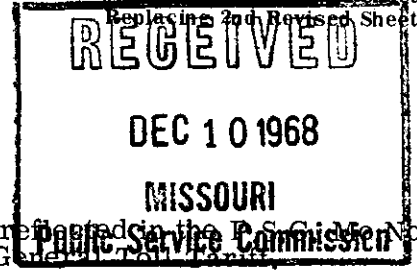
No supplement to this tariff will be issued except for the purpose of canceling this tariff.

P.S.C. Mo.—No.17

KANSAS CITY METROPOLITAN EXCHANGE

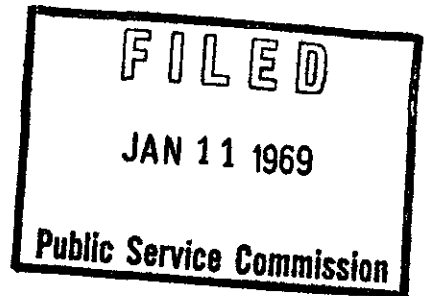
3rd Revised Sheet 4-B

Replacing 2nd Revised Sheet 4-B



The information previously contained on this sheet is now reflected in the P.S.C. Mo. No. 3, of the "Message Toll Telephone Service" section of the General Tariff.

For any rates or practices relating to two-point exception services, refer to the General Toll Tariff.



Issued: December 11, 1968

Effective: January 11, 1969

By R. R. SHOCKLEY, Vice President and General Manager
Southwestern Bell Telephone Company
St. Louis, Missouri

No supplement to this tariff will be issued except for the purpose of canceling this tariff.

KANSAS CITY METROPOLITAN EXCHANGE

2ND REVISED SHEET 5.
REPLACING 1ST REVISED SHEET 5

SOUTHWESTERN BELL TELEPHONE COMPANY
METROPOLITAN EXCHANGE TARIFF
SUPERSEDING ALL TARIFFS PREVIOUSLY ISSUED

RECEIVED
OCT 14 1968
MISSOURI
Public Service Commission

Note: This sheet is canceled with the introduction of the wide area service plan.

FILED
JAN 11 1969
Public Service Commission

○ Indicates removal of text.

Issued: October 14, 1968

Effective: January 11, 1969

By R. R. SHOCKLEY, Vice President and General Manager

St. Louis, Missouri

No supplement to this tariff will be issued except for the purpose of cancelling this tariff.

P.S.C. Mo.—No.17

KANSAS CITY METROPOLITAN EXCHANGE

2nd Revised Sheet 5-A

Replacing 1st Revised Sheet 5-A
RECEIVED
DEC 10 1968
MISSOURI
Public Service Commission

The information previously contained on this sheet is now reflected in the P.S.C. Mo. No. 3, of the "Message Toll Telephone Service" section of the General Toll Tariff.

For any rates or practices relating to two-point exception services, refer to the General Toll Tariff.

FILED
JAN 11 1969
Public Service Commission

Issued: December 11, 1968

Effective: January 11, 1969

By R. R. SHOCKLEY, Vice President and General Manager
Southwestern Bell Telephone Company
St. Louis, Missouri

SBC PSC MO #17
Kansas City
Metropolitan Exchange
Belton Zone
7th Revised Sheet 6
Replacing 6th Revised Sheet 6

Non-Scannable Map

(Is viewable in the Data Center
200 Madison Street, 1st Floor
Jefferson City MO)

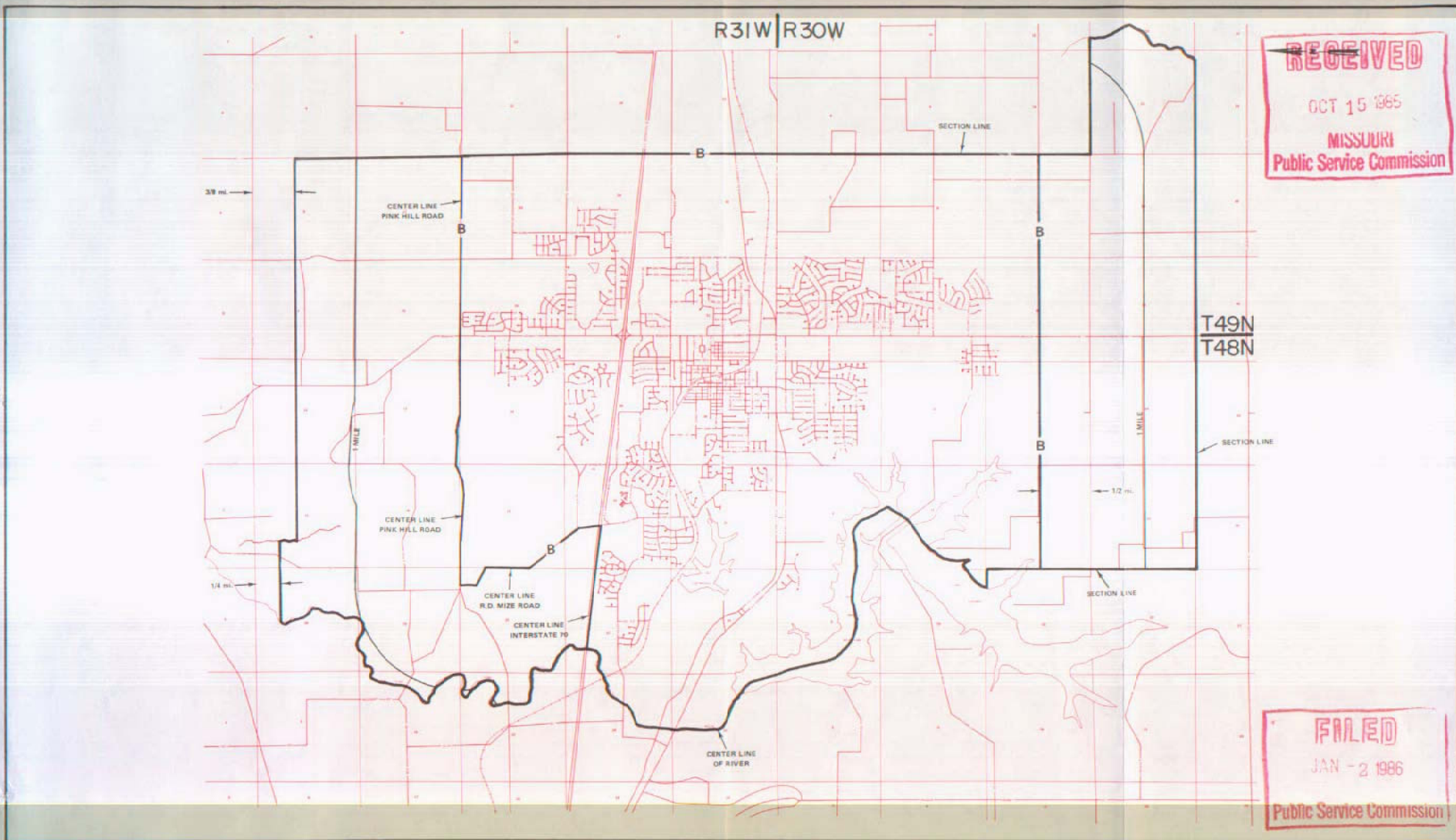
CANCELLED
June 29, 2007
TO-2002-185
Missouri Public
Service Commission

NO SUPPLEMENT TO THIS TARIFF WILL
BE ISSUED EXCEPT FOR THE PURPOSE OF
CANCELING THIS TARIFF.

P. S. C. Mo. No. 17

ZONE AND BASE RATE AREA MAP

Kansas City Metropolitan Exchange
BLUE SPRINGS ZONE & BASE RATE AREA
1ST REVISED SHEET 6A
REPLACING ORIGINAL SHEET 6A



By R.D. BARRON, PRESIDENT—MISSOURI DIVISION
Southwestern Bell Telephone Company
St. Louis, Missouri

Issued: October 14, 1985

Effective: January 2, 1986

SBC PSC MO #17
Kansas City
Metropolitan Exchange
East Independence Zone
6th Revised Sheet 7
Replacing 5th Revised Sheet 7

Non-Scannable Map

(Is viewable in the Data Center
200 Madison Street, 1st Floor
Jefferson City MO)

SBC Missouri
Exchange Area Map
Kansas City Metropolitan
East Independence Zone
PSC MO No. 17
5th Revised Sheet 7

Non-Scannable Map

(Viewable in the Data Center
located at:
200 Madison Street, 1st Floor
Jefferson City MO)

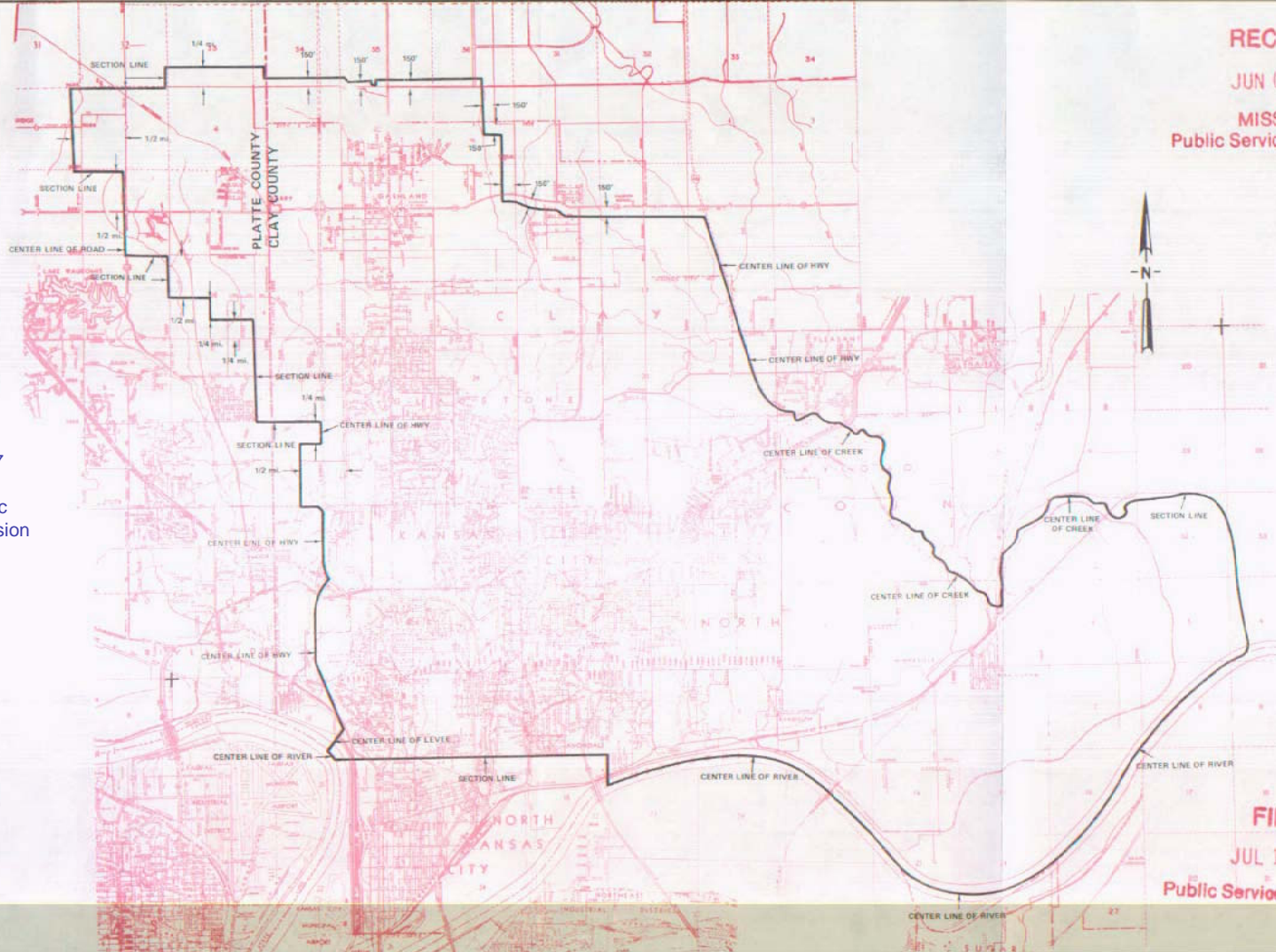
NO SUPPLEMENT TO THIS TARIFF WILL
BE ISSUED EXCEPT FOR THE PURPOSE OF
CANCELING THIS TARIFF.

P. S. C. Mo. No. 17
ZONE AREA MAP

Kansas City Metropolitan Exchange
GLADSTONE ZONE
12th REVISED SHEET 8
REPLACING 11th REVISED SHEET 8

RECEIVED
JUN 06 1988
MISSOURI
Public Service Commission

CANCELLED
June 29, 2007
TO-2002-185
Missouri Public
Service Commission



FILED
JUL 11 1988
Public Service Commission

SBC PSC MO #17
Kansas City
Metropolitan Exchange
Independence Zone
9th Revised Sheet 9
Replacing 8th Revised Sheet 9

Non-Scannable
Map

(Is viewable in the Data Center
200 Madison Street, 1st Floor
Jefferson City MO)

CANCELLED
June 29, 2007
TO-2002-185
Missouri Public
Service Commission

SBC PSC MO #17
Kansas City
Metropolitan Exchange
Kansas City Zone Area
2nd Revised Sheet 10
Replacing 1st Revised Sheet 10

Non-Scannable
Map

(Is viewable in the Data Center
200 Madison Street, 1st Floor
Jefferson City MO)

CANCELLED
June 29, 2007
TO-2002-185
Missouri Public
Service Commission

SBC Missouri
Exchange Area Map
Kansas City Metropolitan
Kansas City Zone Area
PSC MO No. 17
1st Revised Sheet 10

Non-Scannable Map

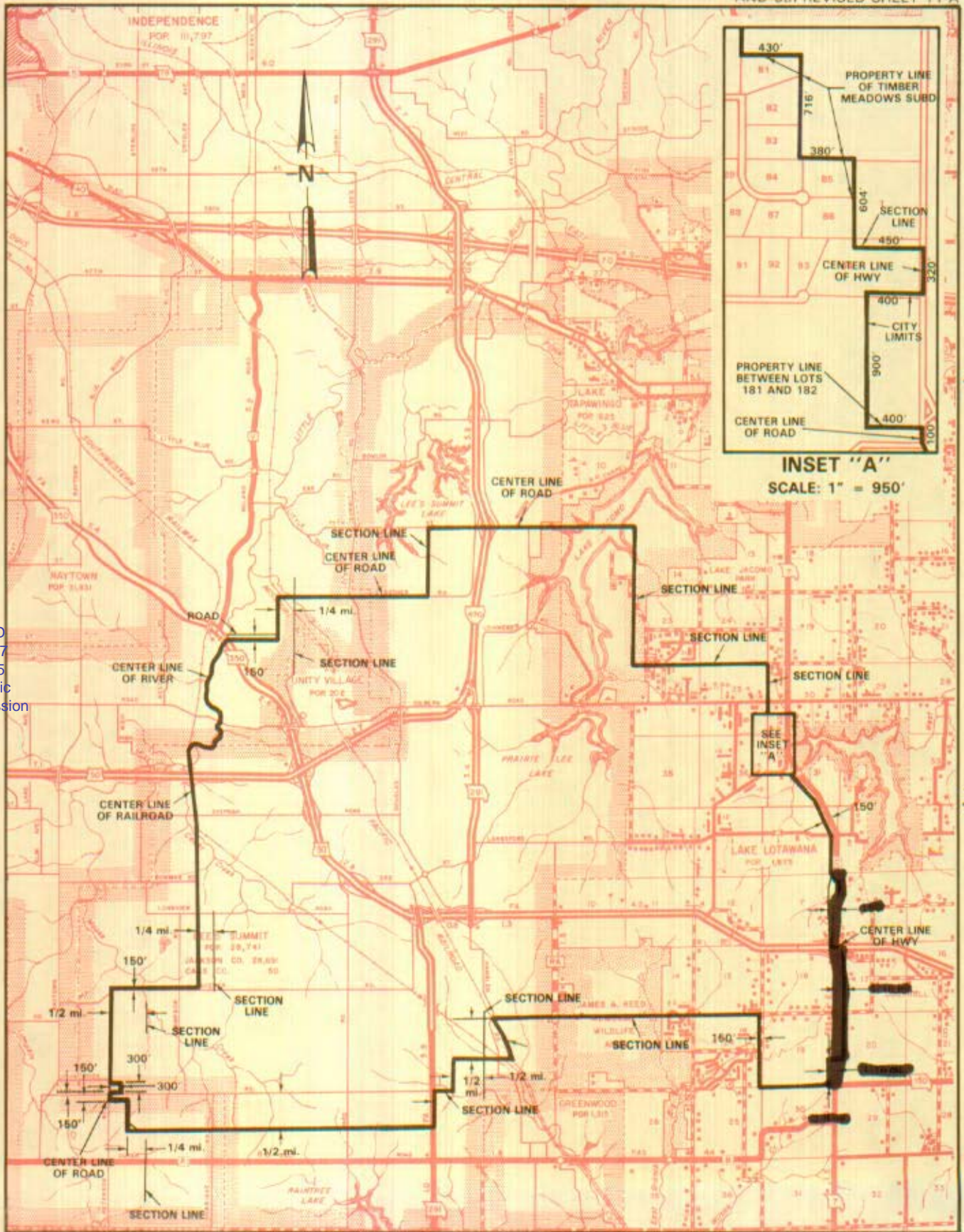
(Viewable in the Data Center
located at:
200 Madison Street, 1st Floor
Jefferson City MO)

NO SUPPLEMENT TO THIS TARIFF WILL BE ISSUED EXCEPT FOR THE PURPOSE OF CANCELING THIS TARIFF.

Kansas City Metropolitan Exchange LEE'S SUMMIT ZONE

P. S. C. Mo. No. 17 ZONE AREA MAP

Should be 10th
9th
REPLACING 7th REVISSED SHEET 11-B
AND 5th REVISSED SHEET 11-A



T49N
T48N

T48N
T47N

R32W|R31W R31W|R30W

Issued: January 19, 2007

Effective: February 18, 2007

By CINDY BRINKLEY, President - Missouri

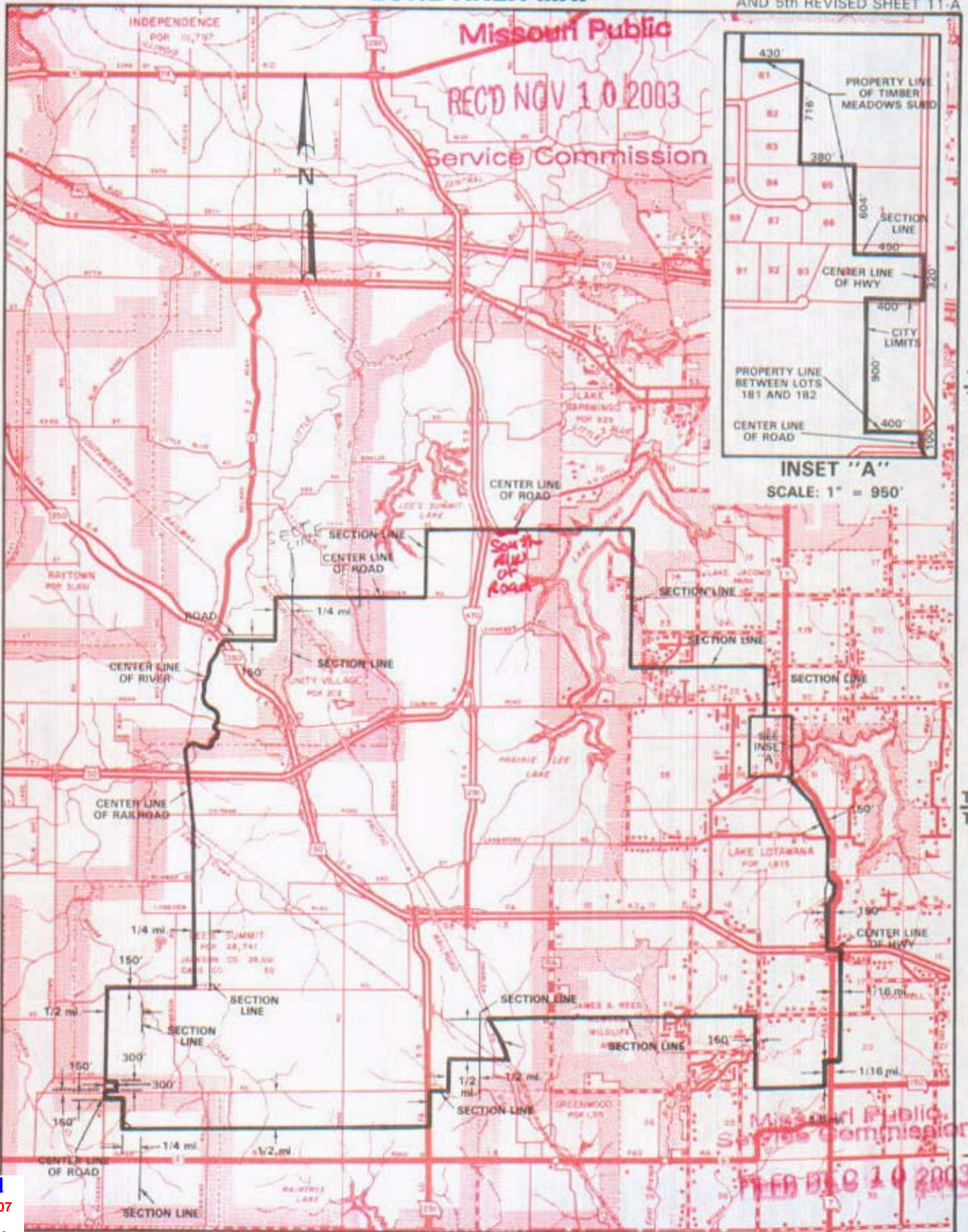
CANCELLED
June 29, 2007
TO-2002-185
Missouri Public
Service Commission

NO SUPPLEMENT TO THIS TARIFF WILL BE ISSUED EXCEPT FOR THE PURPOSE OF CANCELING THIS TARIFF.

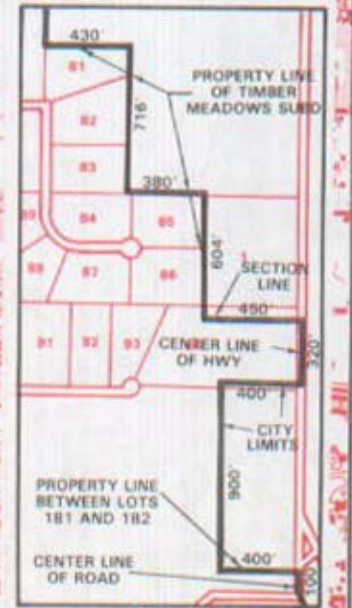
Kansas City Metropolitan Exchange LEE'S SUMMIT ZONE

REPLACING 9th REVISED SHEET 11-B
8th REVISED SHEET 11-B
AND 5th REVISED SHEET 11-A

P. S. C. Mo. No. 17 ZONE AREA MAP



Missouri Public
Service Commission
REC'D NOV 10 2003



INSET "A"
SCALE: 1" = 950'

T49N
T48N

T48N
T47N

Cancelled
February 18, 2007
Missouri Public
Service Commission

R32W/R31W
By *Cindy Bonible*
H. D. BARRON, PRESIDENT, MISSOURI DIVISION
Southwestern Bell Telephone Company, d/b/a SBC Missouri
St. Louis, Missouri

R31W/R30W
Effective: October 22, 1990
December 10, 2003

November 10, 2003
Issued: August 27, 1990

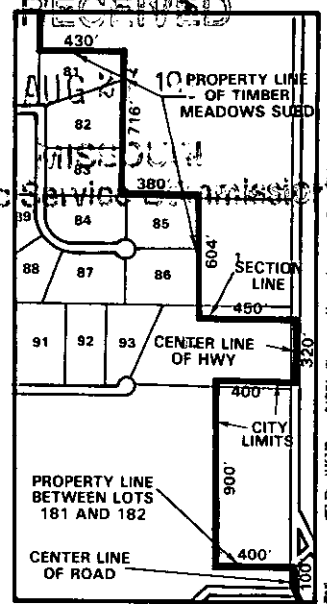
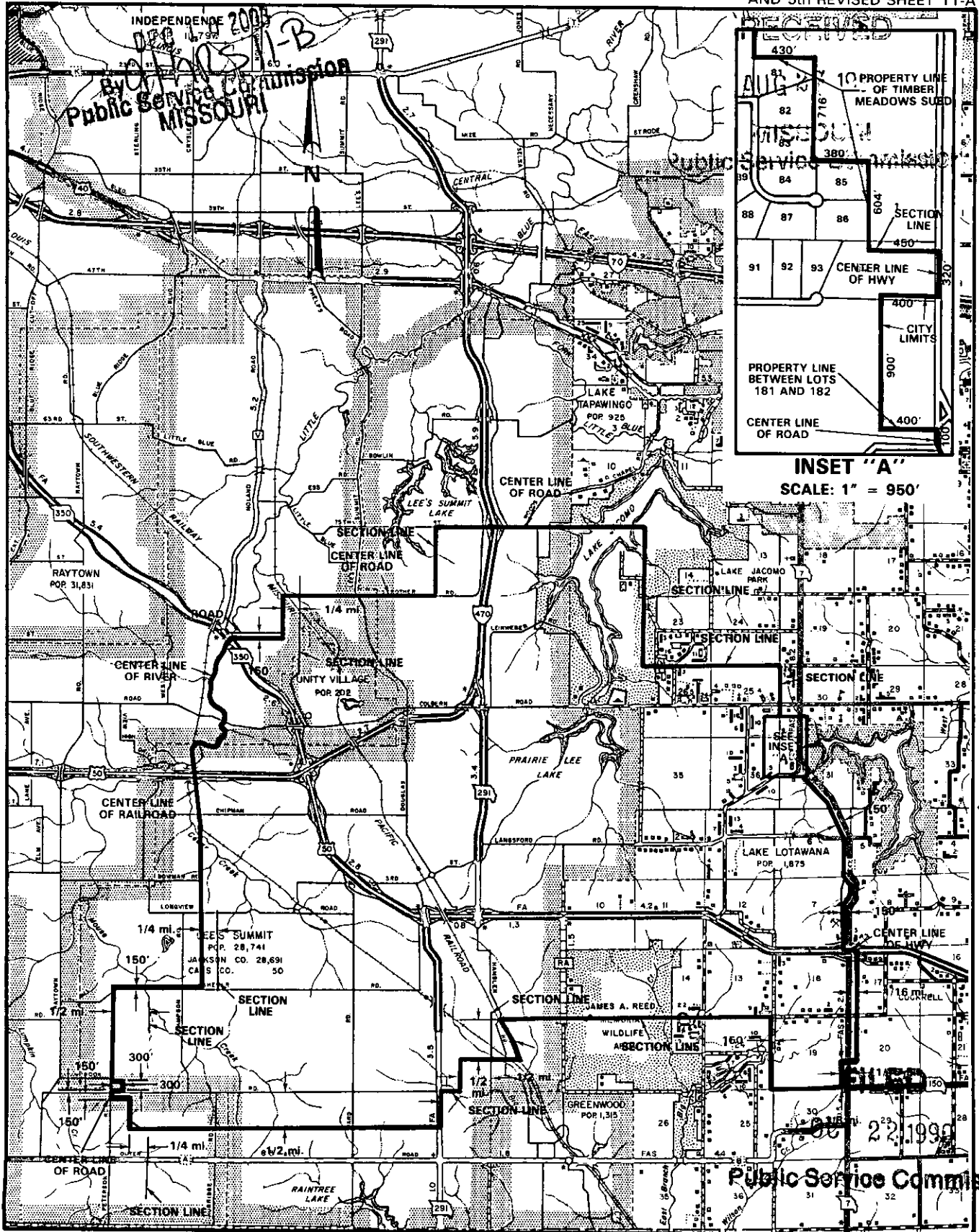
NO SUPPLEMENT TO THIS TARIFF WILL BE ISSUED EXCEPT FOR THE PURPOSE OF CANCELING THIS TARIFF.

CANCELLED

**P. S. C. Mo. No. 17
ZONE AREA MAP**

**Kansas City
Metropolitan Exchange
LEE'S SUMMIT ZONE**

8th REVISED SHEET 11-B
REPLACING 7th REVISED SHEET 11-B
AND 5th REVISED SHEET 11-A



INSET "A"
SCALE: 1" = 950'

T49N
T48N

T48N
T47N

R32W/R31W

R31W/R30W

By R. D. BARRON, PRESIDENT, MISSOURI DIVISION
Southwestern Bell Telephone Company
St. Louis, Missouri

Issued: August 27, 1990

Effective: October 22, 1990

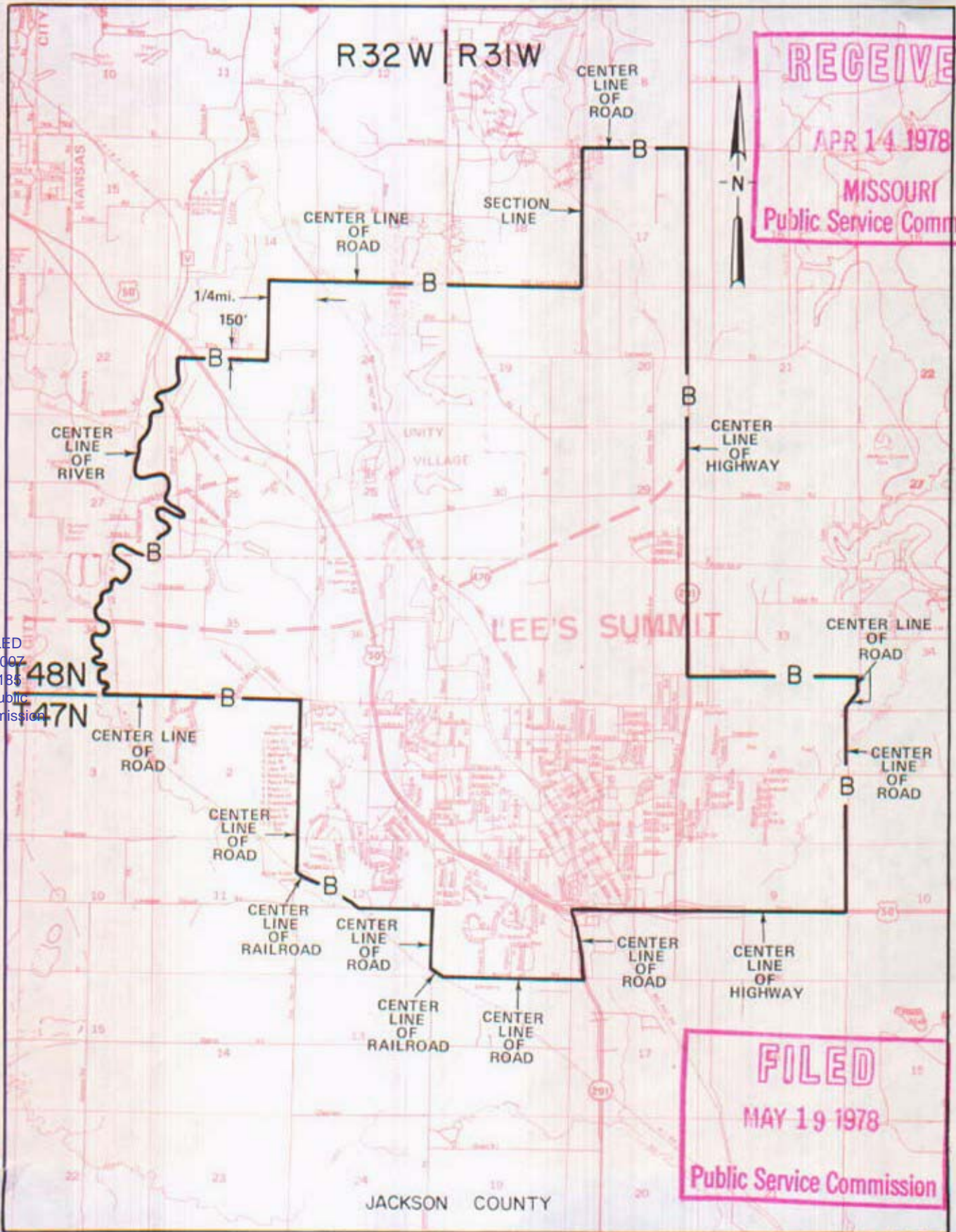
NO SUPPLEMENT TO THIS TARIFF WILL BE ISSUED EXCEPT FOR THE PURPOSE OF CANCELING THIS TARIFF.

P. S. C. Mo. No. 17

Kansas City Metropolitan Exchange
LEE'S SUMMIT ZONE

BASE RATE AREA MAP

5th REVISED SHEET 11-A
REPLACING 4th REVISED SHEET 11-A



RECEIVED
 APR 14 1978
 MISSOURI
 Public Service Commission

FILED
 MAY 19 1978
 Public Service Commission

CANCELLED
 June 29, 2007
 TO-2002-185
 Missouri Public
 Service Commission

By R. R. SHOCKLEY, Vice President, Missouri
 Southwestern Bell Telephone Company
 St. Louis, Missouri

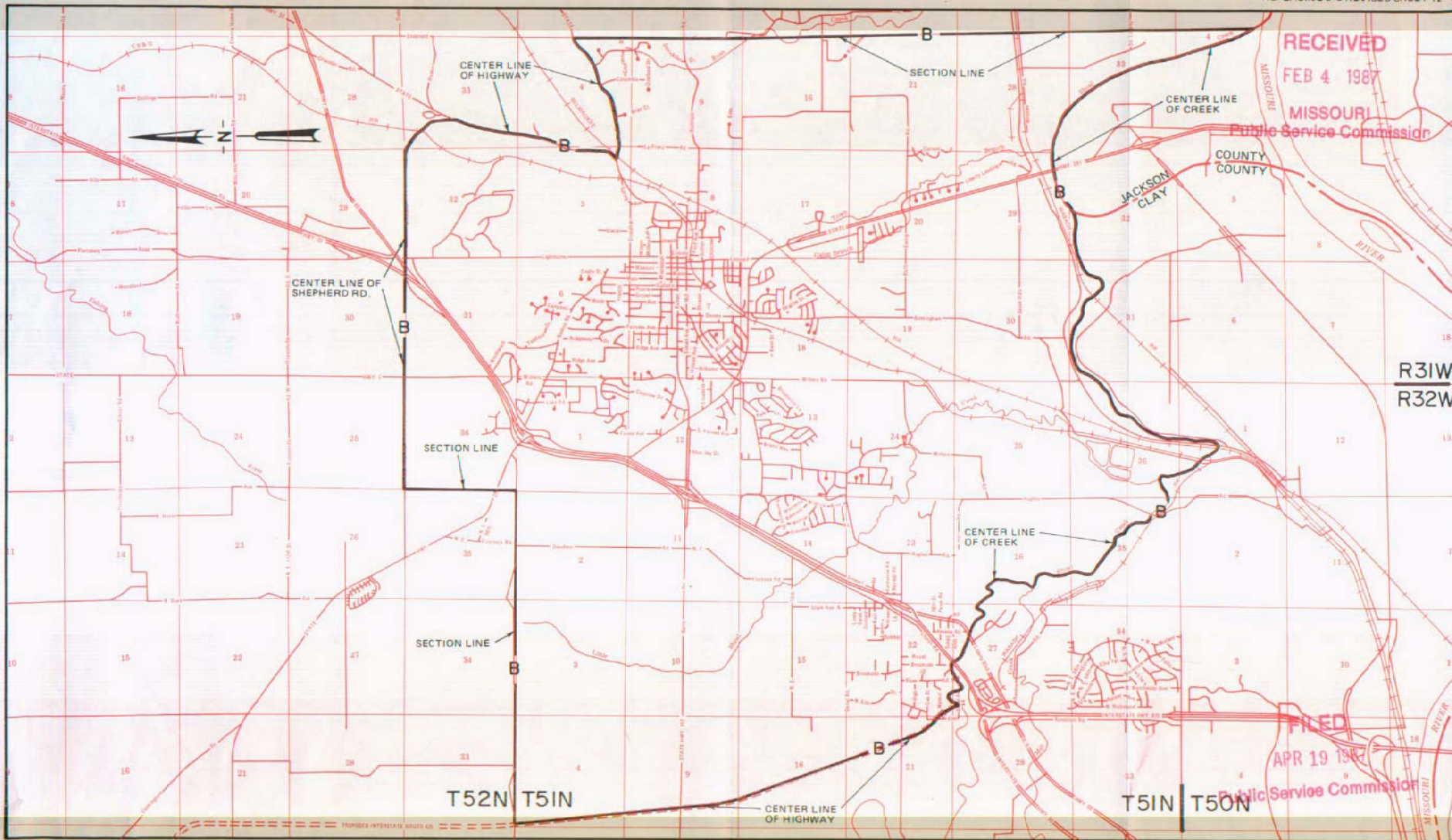
FILE # 7800 ⁰³³

CANCELLED
June 29, 2007
TO-2002-185
Missouri Public
Service Commission

NO SUPPLEMENT TO THIS TARIFF WILL
BE ISSUED EXCEPT FOR THE PURPOSE OF
CANCELING THIS TARIFF.

P. S. C. Mo. No. 17
BASE RATE AREA MAP

Kansas City
Metropolitan Exchange
LIBERTY ZONE
4th REVISED SHEET 12-A
REPLACING 3rd REVISED SHEET 12-A



By R.D. BARRON, PRESIDENT—MISSOURI DIVISION
Southwestern Bell Telephone Company
St. Louis, Missouri

Issued: February 6, 1987

Effective: April 19, 1987

CANCELLED
June 29, 2007
TO-2002-185
Missouri Public
Service Commission

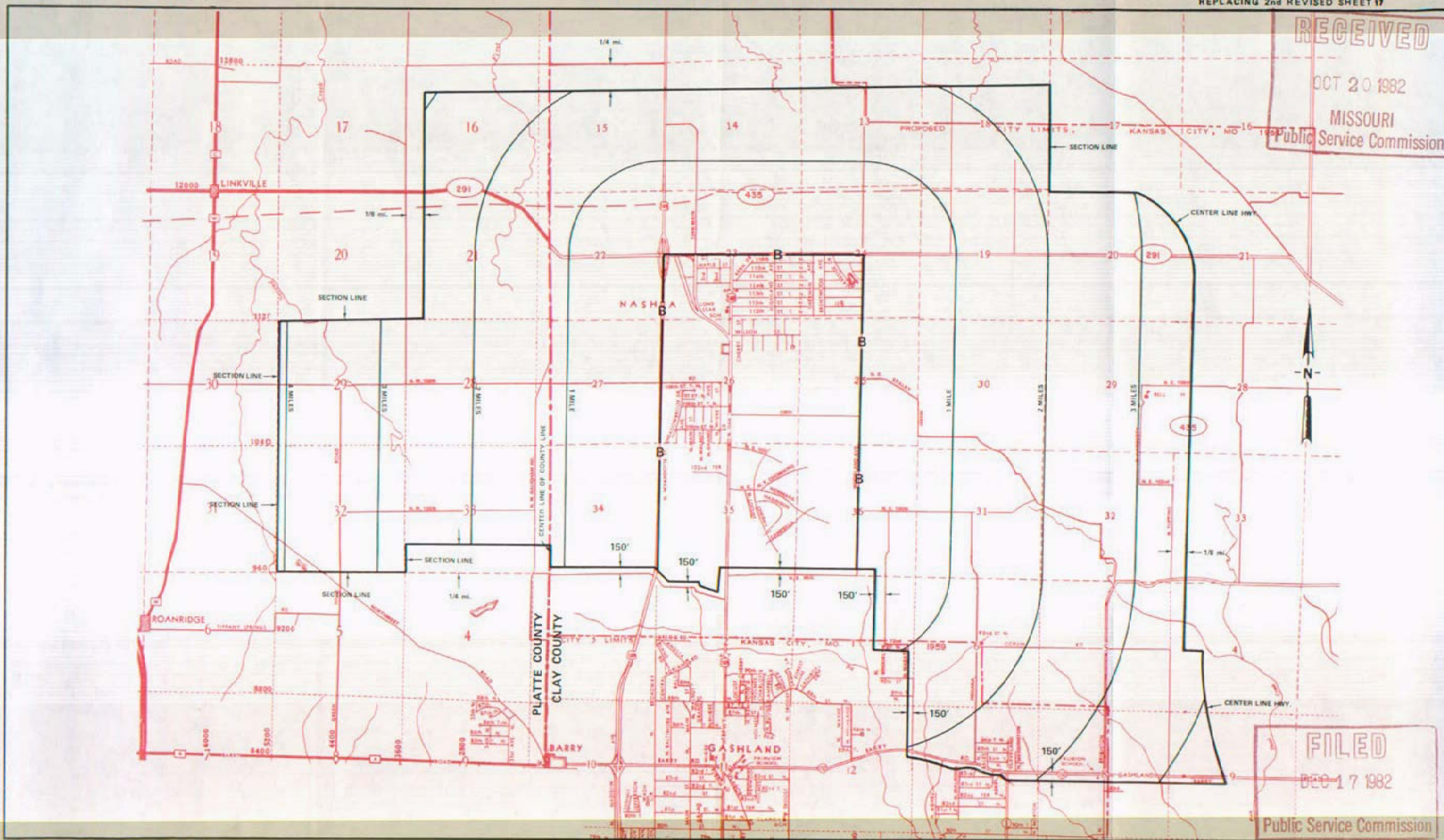
P. S. C. Mo. No. 17

Kansas City Metropolitan Exchange

NASHUA ZONE AND BASE RATE AREA
3rd REVISED SHEET 17
REPLACING 2nd REVISED SHEET 17

NO SUPPLEMENT TO THIS TARIFF WILL
BE ISSUED EXCEPT FOR THE PURPOSE OF
CANCELING THIS TARIFF.

ZONE AND BASE RATE AREA MAP



RECEIVED
OCT 20 1982
MISSOURI
Public Service Commission

FILED
DEC 17 1982
Public Service Commission

Issued: OCTOBER 22, 1982

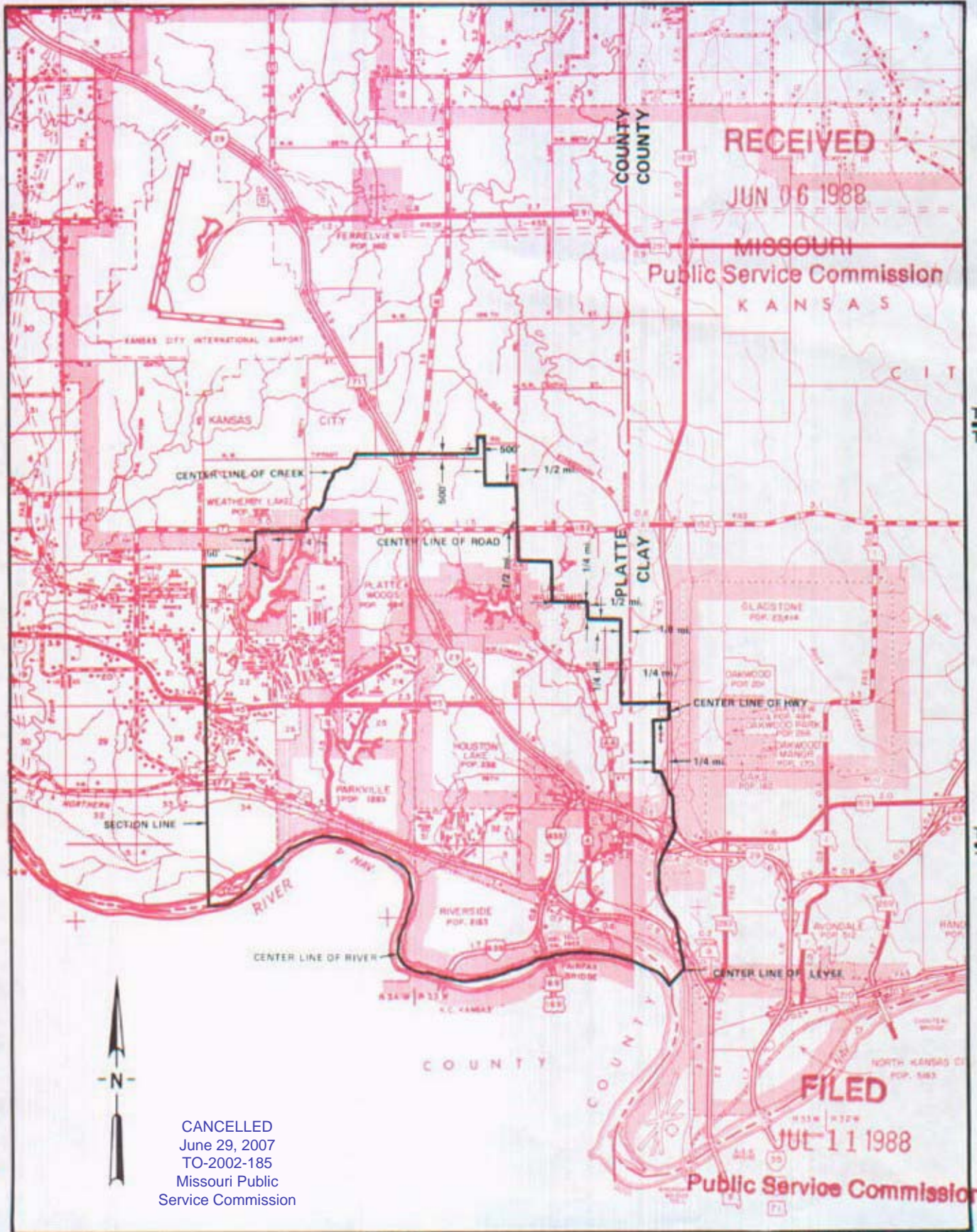
By R. D. BARRON, Vice President, Missouri
Southwestern Bell Telephone Company
St. Louis, Missouri

Effective: DECEMBER 17, 1982

NO SUPPLEMENT TO THIS TARIFF WILL BE ISSUED EXCEPT FOR THE PURPOSE OF CANCELING THIS TARIFF.

P. S. C. Mo. No. 17
ZONE AREA MAP

Kansas City Metropolitan Exchange
PARKVILLE ZONE
11th REVISED SHEET 13
REPLACING 10th REVISED SHEET 13



CANCELLED
June 29, 2007
TO-2002-185
Missouri Public
Service Commission

R34W | R33W

R33W | R32W

By R. D. BARRON, President, Missouri Division
Southwestern Bell Telephone Company
St. Louis, Missouri

Issued: JUNE 10, 1988

Effective: JULY 11, 1988

CANCELLED
June 29, 2007
TO-2002-185
Missouri Public
Service Commission

NO SUPPLEMENT TO THIS TARIFF WILL
BE ISSUED EXCEPT FOR THE PURPOSE OF
CANCELING THIS TARIFF.

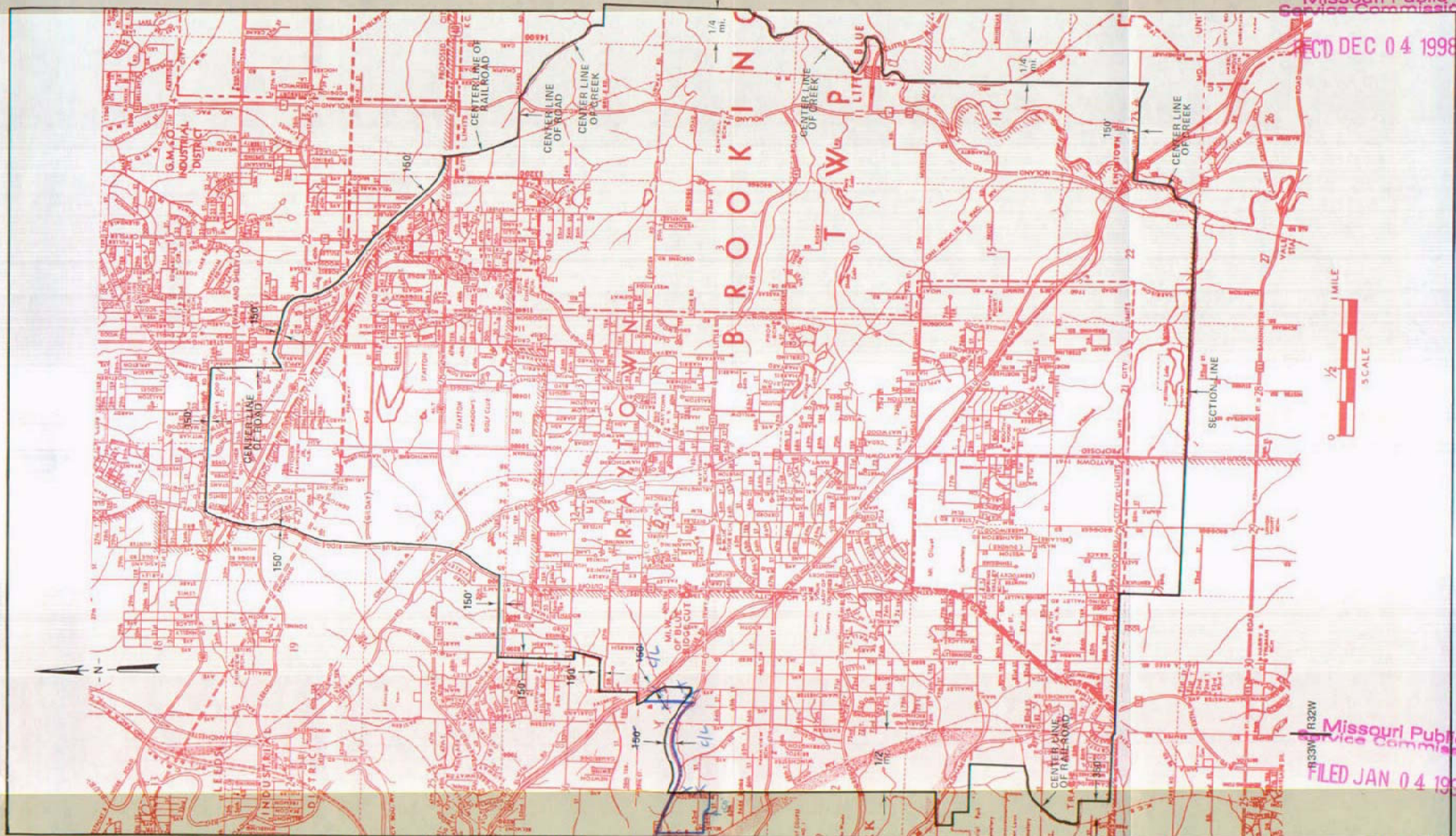
P. S. C. Mo. No. 17

ZONE AND BASE RATE AREA MAP

Kansas City
Metropolitan Exchange
RAY TOWN ZONE
REPLACING ~~REVISED SHEET 14~~
REPLACING ~~REVISED SHEET 14~~

Missouri Public
Service Commission

REC'D DEC 04 1998



Missouri Public
Service Commission
FILED JAN 04 1999

DEC 04 1998

Issued: FEBRUARY 7, 1980

By ~~RAY SHOCKLEY~~ President, Missouri
Southwestern Bell Telephone Company
St. Louis, Missouri

Priscilla Hill-Ardoin

T49N
T48N

JAN 04 1999

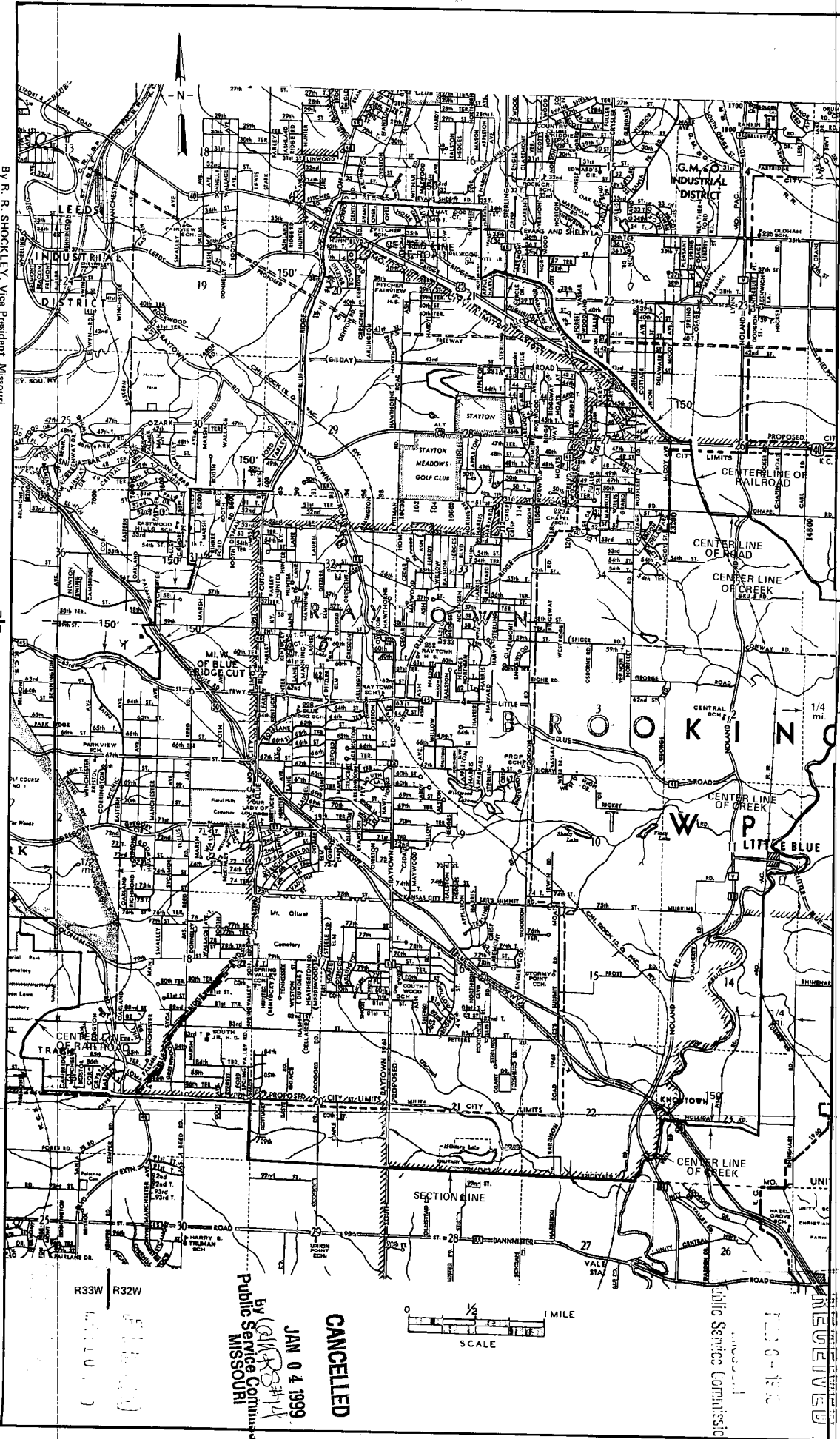
Effective: ~~MAY 10 1980~~

NO SUPPLEMENT TO THIS TARIFF WILL BE ISSUED EXCEPT FOR THE PURPOSE OF CANCELING THIS TARIFF.

P. S. C. Mo. No. 17

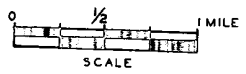
ZONE AND BASE RATE AREA MAP

Kansas City
Metropolitan Exchange
RAYTOWN ZONE
5th REVISED SHEET 14
REPLACING 4th REVISED SHEET 14



CANCELLED

JAN 04 1999
By (S) R. SHU
Public Service Commission
MISSOURI



Issued FEBRUARY 7, 1980

By R. R. SHOCKLEY, Vice President, Missouri
Southwestern Bell Telephone Company
St. Louis, Missouri

T49N
T48N

R33W R32W

Effective: MAR 13 1980

SBC PSC MO #17
Kansas City
Metropolitan Exchange
South Kansas City Base Rate Area
6th Revised Sheet 15
Replacing 5th Revised Sheet 15

Non-Scannable
Map

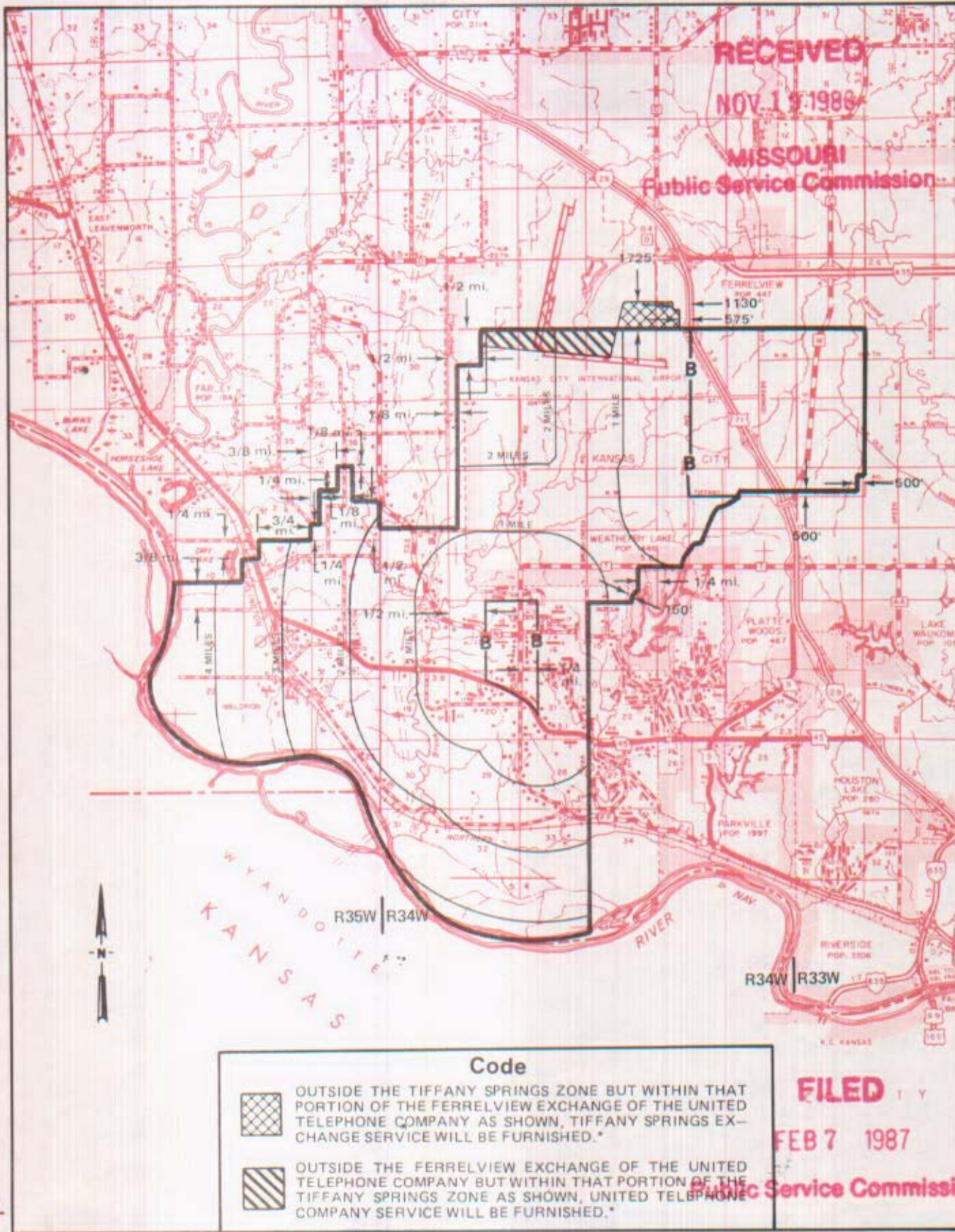
(Is viewable in the Data Center
200 Madison Street, 1st Floor
Jefferson City MO)

NO SUPPLEMENT TO THIS TARIFF WILL BE ISSUED EXCEPT FOR THE PURPOSE OF CANCELING THIS TARIFF.

P. S. C. Mo. No. 17 ZONE AND BASE RATE AREA

Kansas City Metropolitan Exchange
TIFFANY SPRINGS ZONE

6th REVISED SHEET 16
REPLACING 5th REVISED SHEET 16



Issued: November 19, 1986

By **R. D. BARRON**, President, Missouri Division
Southwestern Bell Telephone Company
St. Louis, Missouri

Effective: February 7, 1987

CANCELLED
June 29, 2007
TO-2002-185
Missouri Public
Service Commission

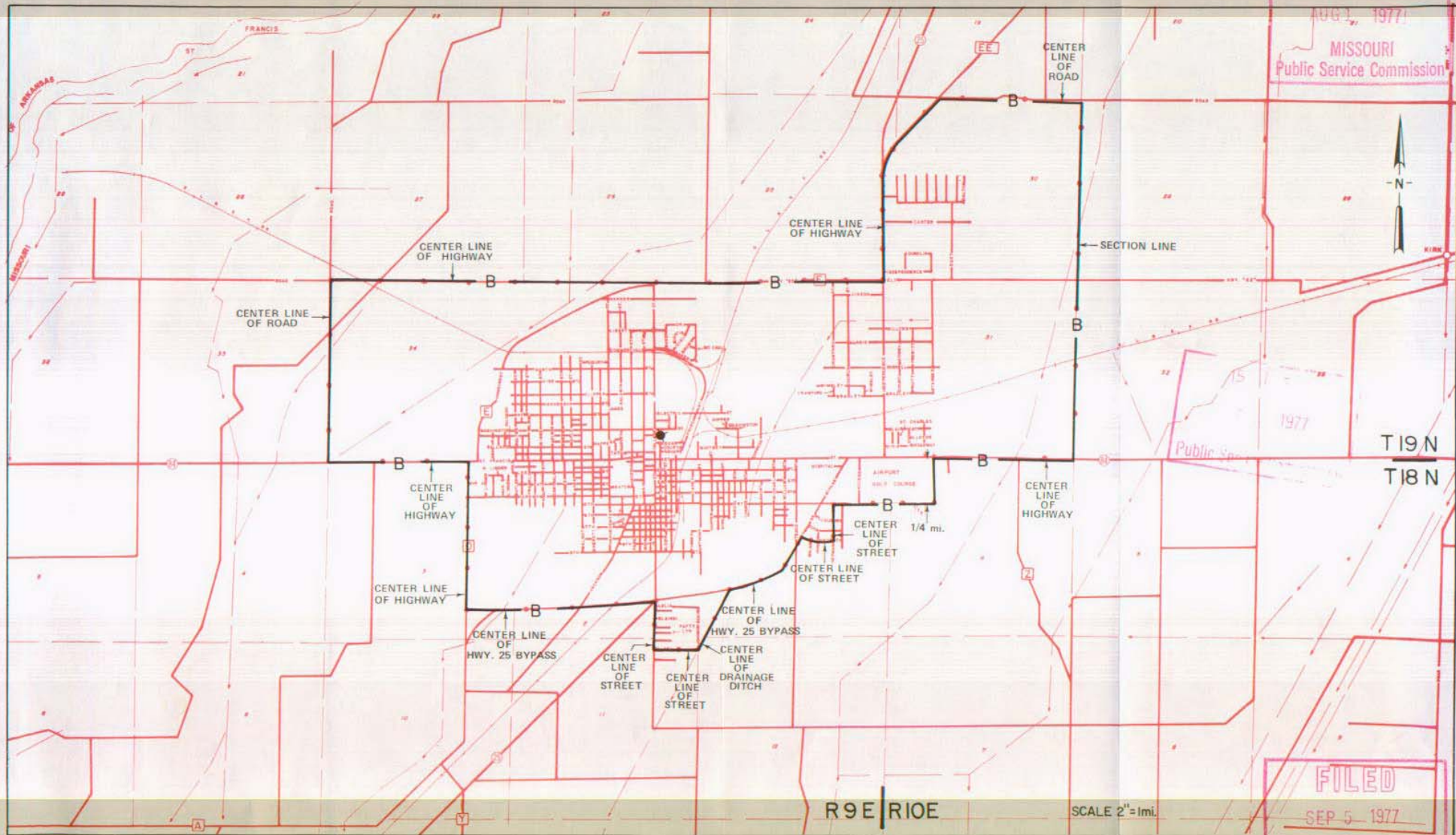
NO SUPPLEMENT TO THIS TARIFF WILL
BE ISSUED EXCEPT FOR THE PURPOSE OF
CANCELING THIS TARIFF.

P. S. C. Mo. No. 17
BASE RATE AREA MAP

Kennett, Missouri
RECEIVED
PUBLIC SERVICE COMMISSION
REPLACING 2ND REVISED SHEET 2

AUG 1, 1977

MISSOURI
Public Service Commission



By R. R. SHOCKLEY, Vice President, Missouri
Southwestern Bell Telephone Company
St. Louis, Missouri

Issued: August 5, 1977

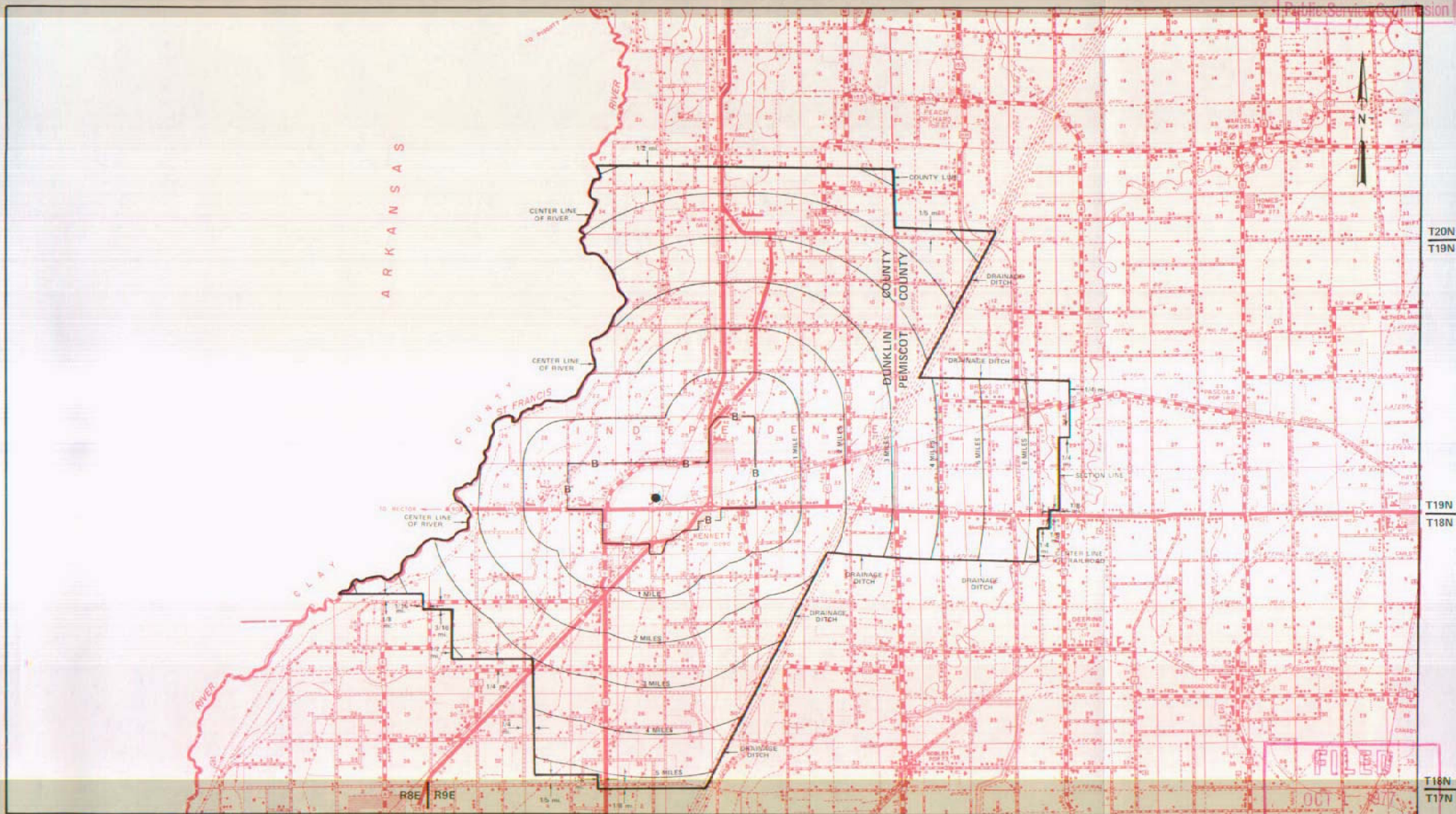
FILED
SEP 5 1977
Public Service Commission
Effective: September 5, 1977

CANCELLED
June 29, 2007
TO-2002-185
Missouri Public
Service Commission

NO SUPPLEMENT TO THIS TARIFF WILL
BE ISSUED EXCEPT FOR THE PURPOSE OF
CANCELING THIS TARIFF.

P. S. C. Mo. No. 17
EXCHANGE AREA MAP

RECEIVED
Kennett, Missouri
APR 15 1977
2nd REVISED SHEET 3
REPLACING 1st REVISED SHEET 3
MISSOURI
Public Service Commission



By R. R. SHOCKLEY, Vice President, Missouri
Southwestern Bell Telephone Company
St. Louis, Missouri

Issued: April 15, 1977

FILED
OCT 1 1977
Public Service Commission
Effective: Oct 1, 1977

SBC PSC MO #17
Kirksville, Missouri
3rd Revised Sheet 2
Replacing 2nd Revised Sheet 2

Non-Scannable Map

(Is viewable in the Data Center
200 Madison Street, 1st Floor
Jefferson City MO)

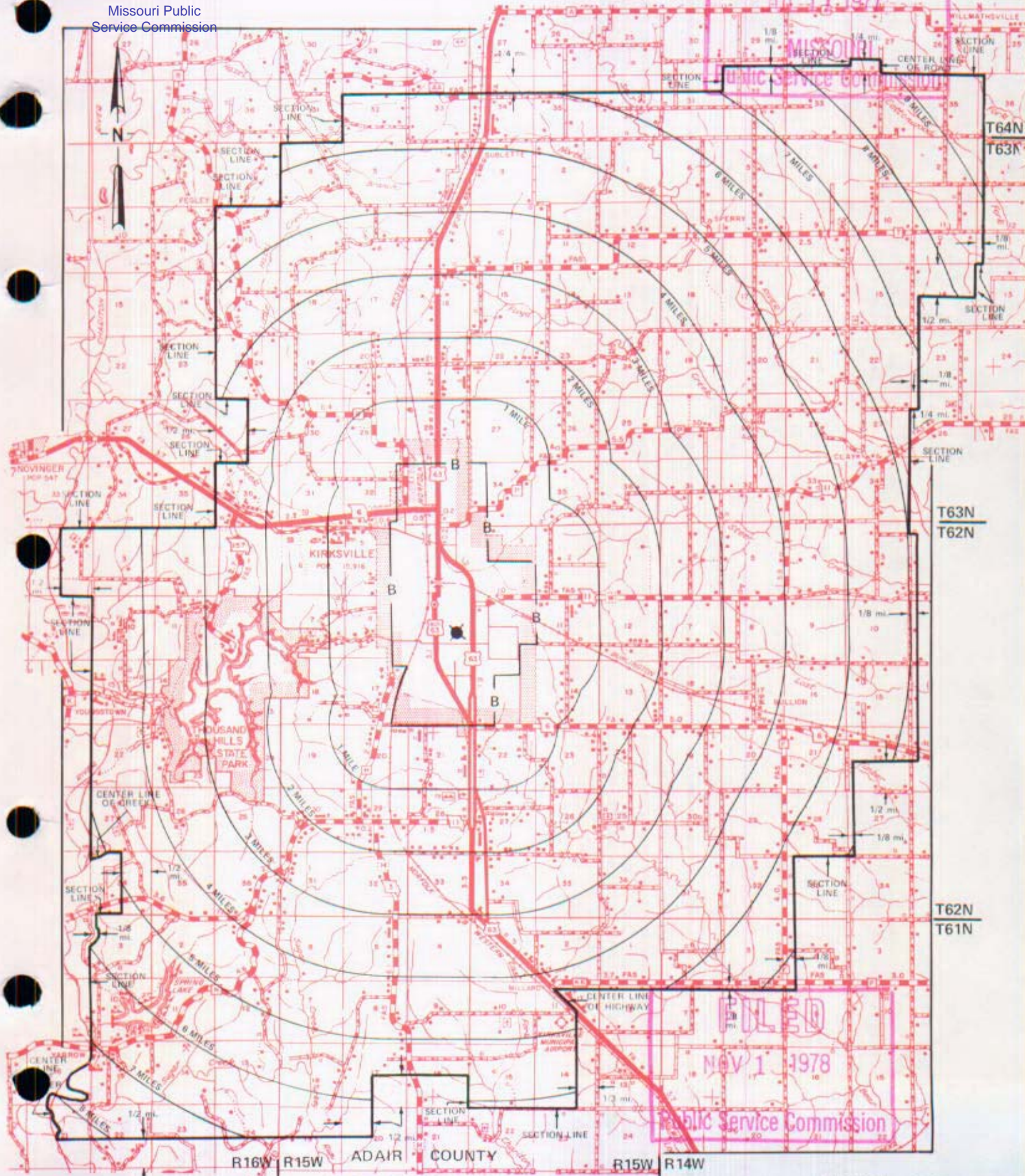
NO SUPPLEMENT TO THIS TARIFF WILL BE ISSUED EXCEPT FOR THE PURPOSE OF CANCELING THIS TARIFF.

CANCELLED
June 29, 2007
TO-2002-185
Missouri Public
Service Commission

P. S. C. Mo. No. 17 EXCHANGE AREA MAP

Kirkville, Missouri
16th REVISED SHEET 3
REPLACING 15th REVISED SHEET 3

411 11 1977



NOV 1 1978

By R. R. SHOCKLEY, Vice President, Missouri
Southwestern Bell Telephone Company
St. Louis, Missouri

NOV 1 - 1978

Issued: July 11, 1977

Effective: _____

CANCELLED
June 29, 2007
TO-2002-185
Missouri Public
Service Commission

KIRKWOOD

see

St. Louis District Exchange Rates

under

"St. Louis"

June 1, 1937

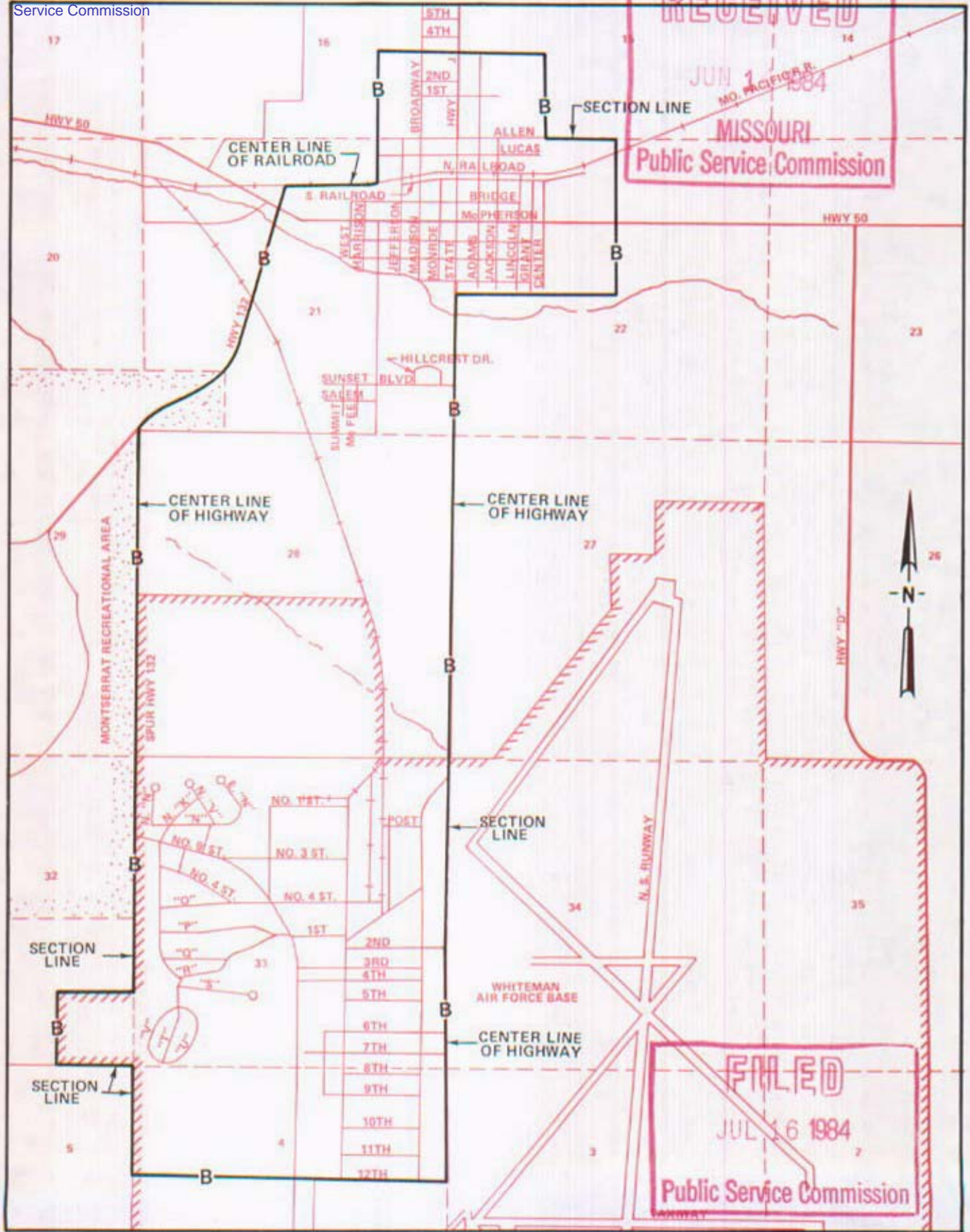
NO SUPPLEMENT TO THIS TARIFF WILL BE ISSUED EXCEPT FOR THE PURPOSE OF CANCELING THIS TARIFF.

P. S. C. Mo. No. 17

Knob Noster, Missouri
5th REVISED SHEET 2
REPLACING 4th REVISED SHEET 2

CANCELLED
June 29, 2007
TO-2002-185
Missouri Public
Service Commission

BASE RATE AREA MAP



Issued: JUN 15 1984

By R.D. BARRON, President, Missouri Division
Southwestern Bell Telephone Company
St. Louis, Missouri

Effective: JUL 16 1984

CANCELLED
June 29, 2007
TO-2002-185
Missouri Public
Service Commission

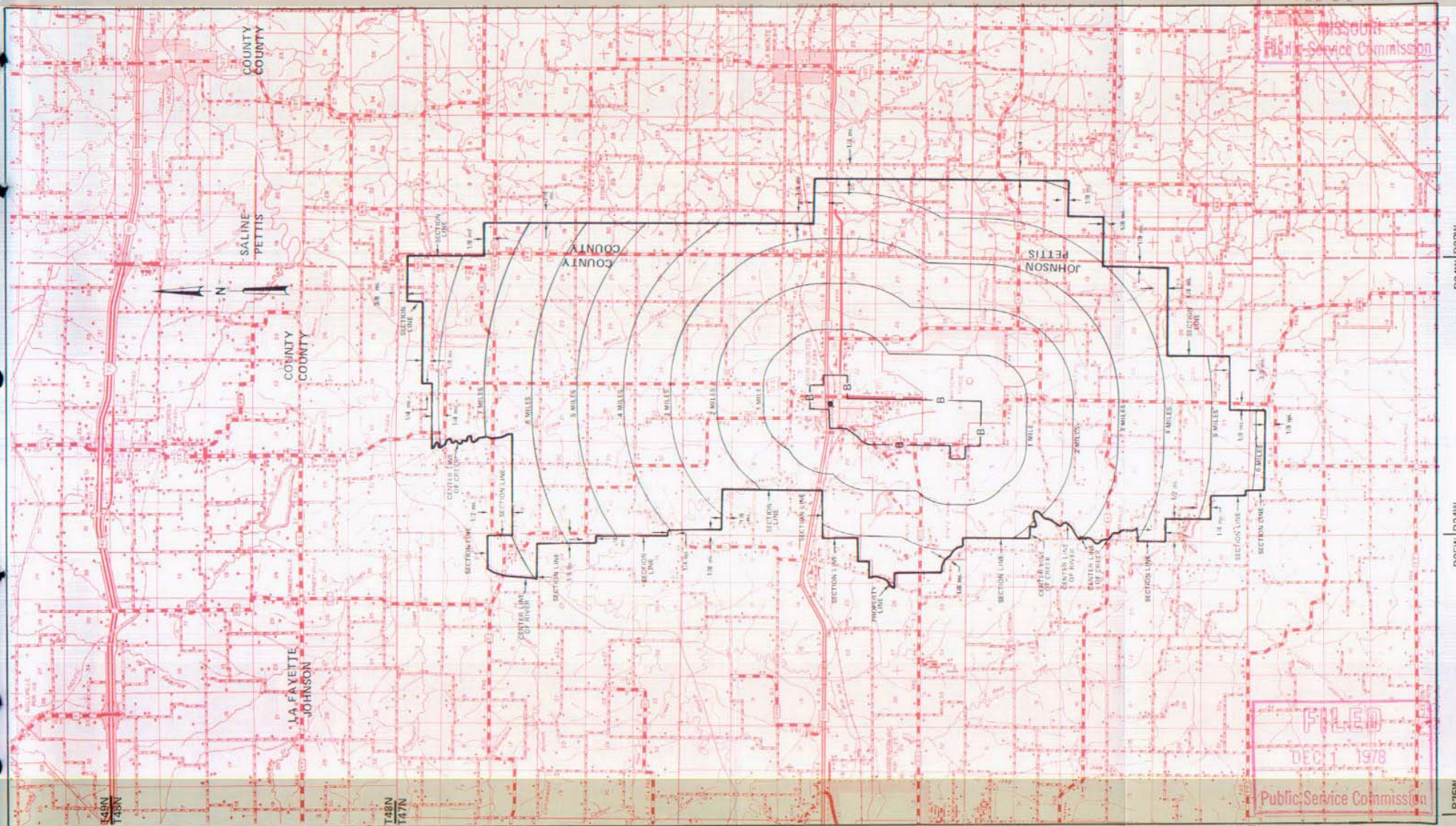
NO SUPPLEMENT TO THIS TARIFF WILL
BE ISSUED EXCEPT FOR THE PURPOSE OF
CANCELING THIS TARIFF.

P. S. C. Mo. No. 17
EXCHANGE AREA MAP

Knob Noster, Missouri
7th REVISED SHEET 3
REPLACING 6th REVISED SHEET 3

FEB 14 1977

Missouri
Public Service Commission



R24W R23W

R26W R24W

R25W

FILED
DEC 1 1978

Public Service Commission

By R. R. SHOCKLEY, Vice President, Missouri
Southwestern Bell Telephone Company
St. Louis, Missouri

Issued: February 15, 1977

Effective: DEC 1 1978