

NO SUPPLEMENT TO THIS TARIFF WILL BE ISSUED EXCEPT FOR THE PURPOSE OF CANCELING THIS TARIFF.

P. S. C. Mo. No. 17

Imperial, Missouri

6th REVISED SHEET 2
REPLACING 5th REVISED SHEET 2

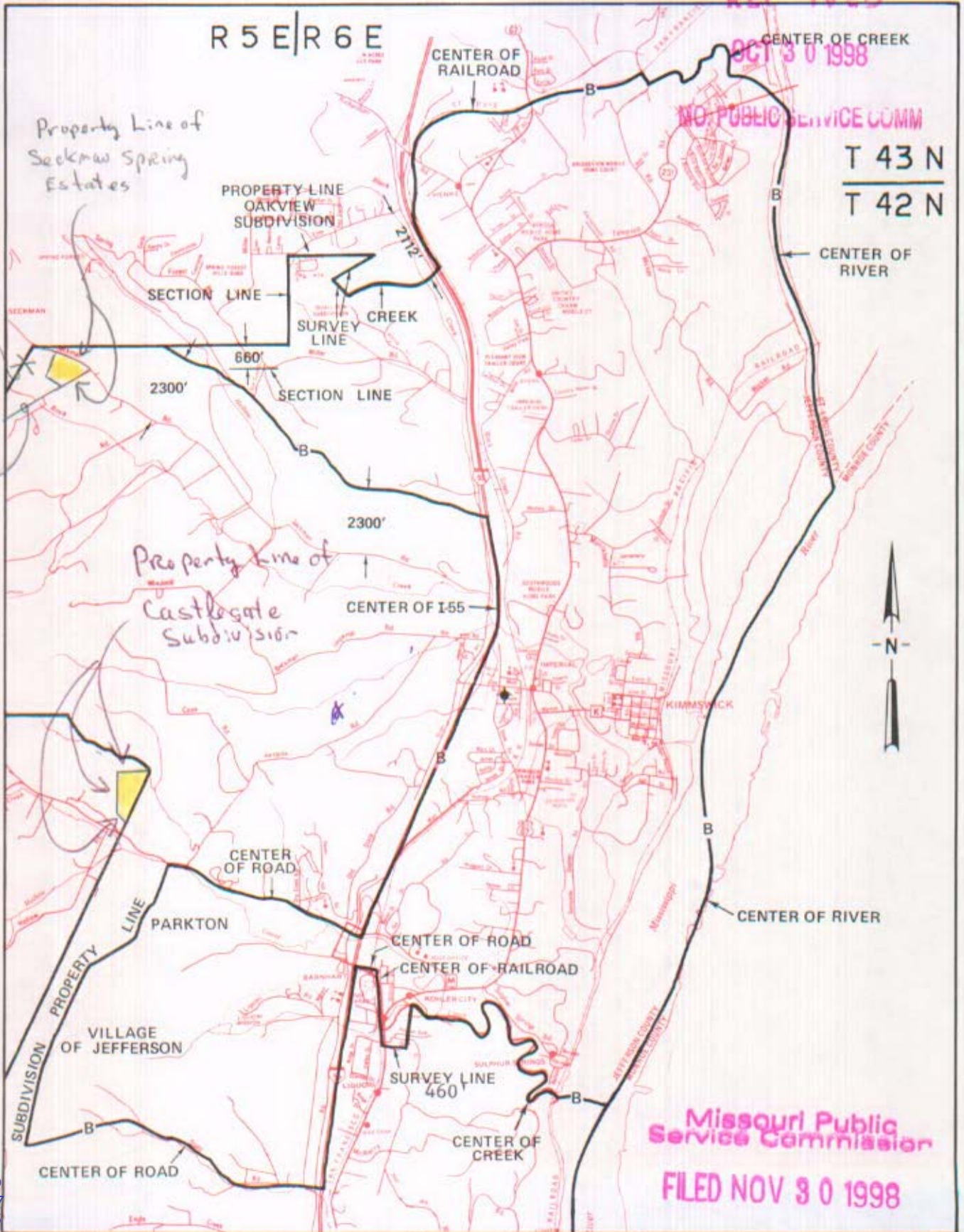
BASE RATE AREA MAP

RECEIVED

OCT 30 1998

NO PUBLIC SERVICE COMM

T 43 N
T 42 N



Missouri Public Service Commission

FILED NOV 30 1998

CANCELLED
June 29, 2007
TO-2002-185
Missouri Public
Service Commission

OCT 30 1998

~~AUG 21 1981~~

Priscilla Hilla-Ardoin

By R. R. SHOOKLEY, Vice President, Missouri

NOV 30 1998

~~SEP 21 1981~~

Issued: _____

Southwestern Bell Telephone
St. Louis, Missouri

Effective: _____

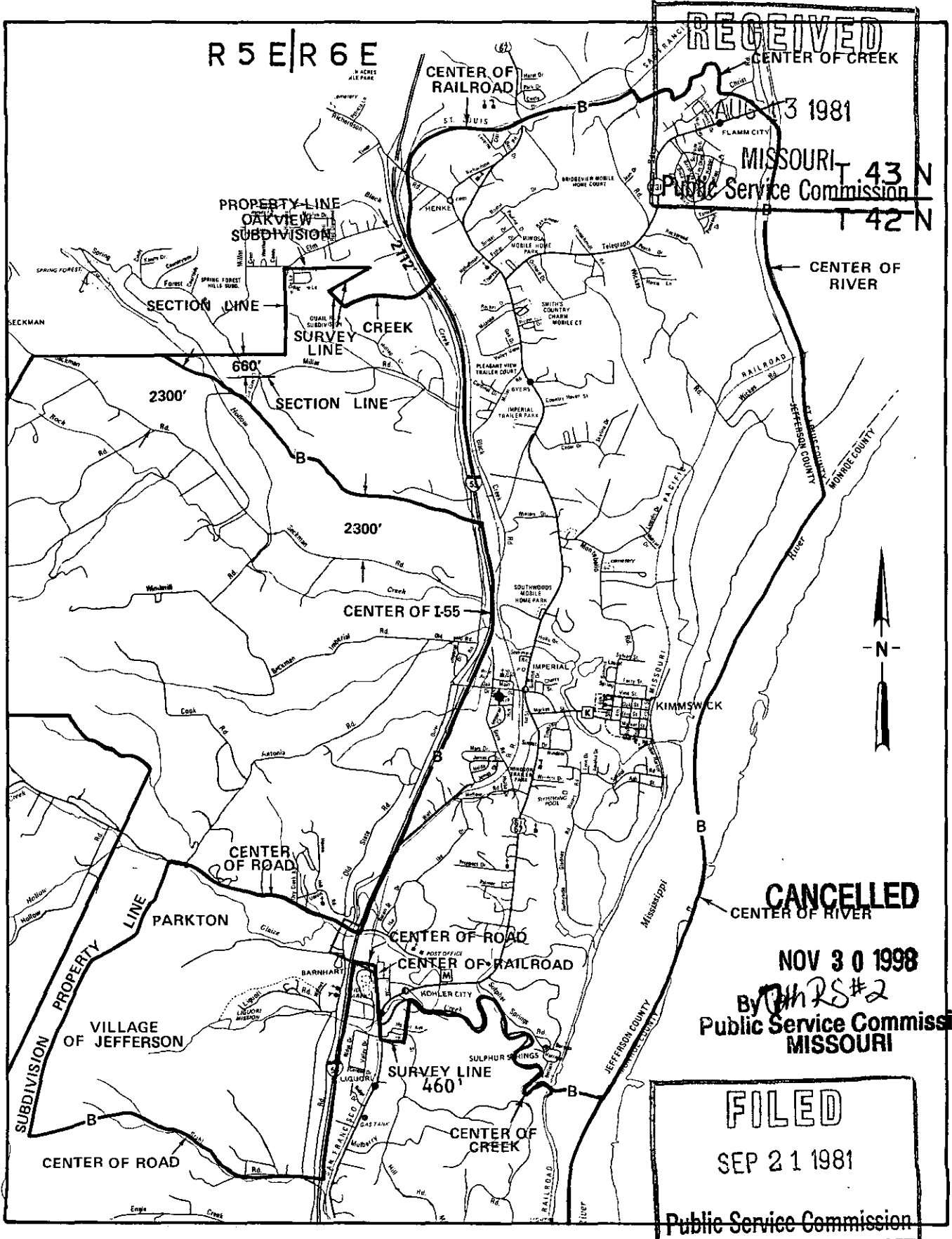
NO SUPPLEMENT TO THIS TARIFF WILL BE ISSUED EXCEPT FOR THE PURPOSE OF CANCELING THIS TARIFF.

P. S. C. Mo. No. 17

Imperial, Missouri

BASE RATE AREA MAP

6th REVISED SHEET 2 REPLACING 5th REVISED SHEET 2



AUG 21 1981

By R. R. SHOCKLEY, Vice President, Missouri

SEP 21 1981

Issued:

Southwestern Bell Telephone
St. Louis, Missouri

Effective:

NO SUPPLEMENT TO THIS TARIFF WILL BE ISSUED EXCEPT FOR THE PURPOSE OF CANCELING THIS TARIFF.

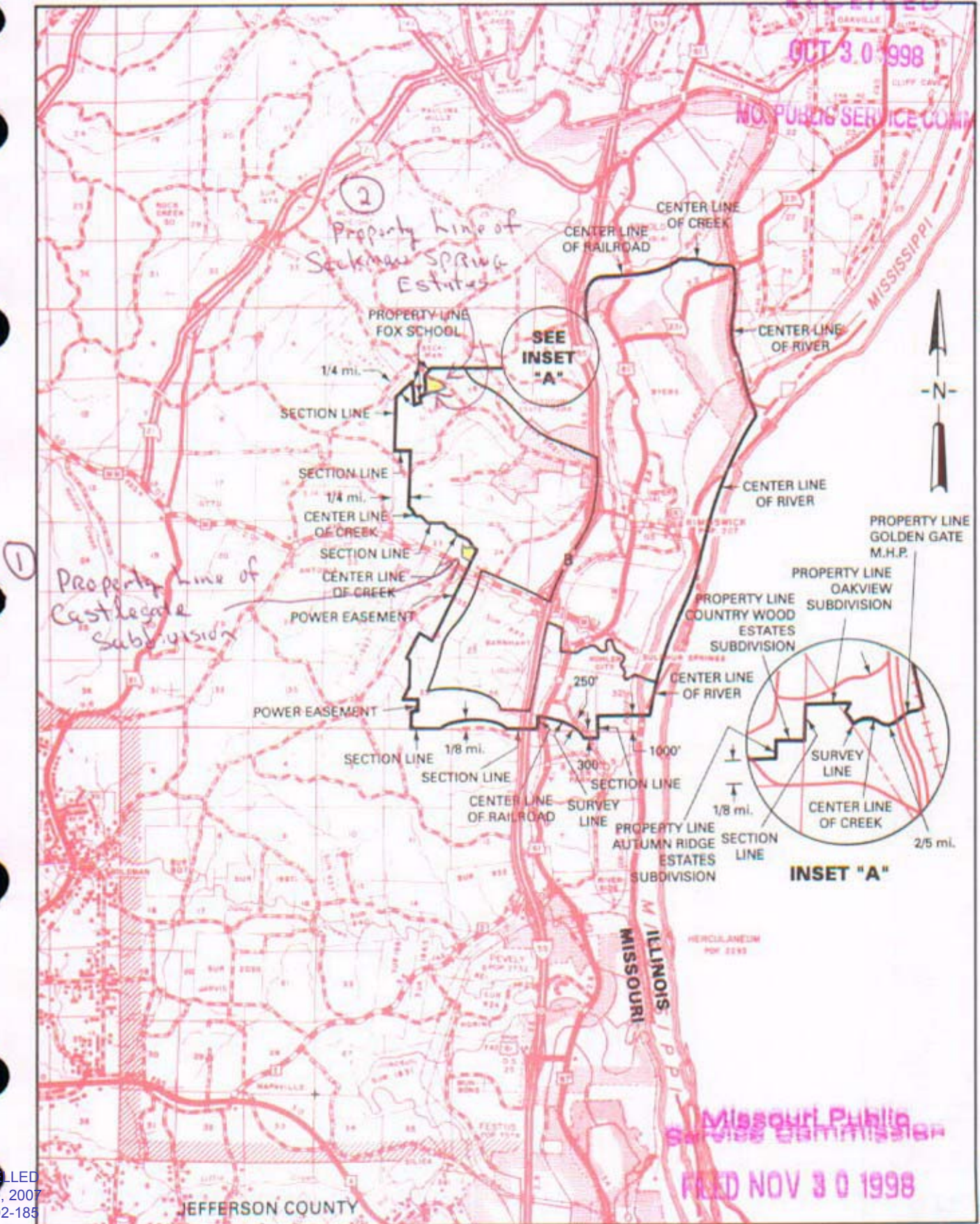
P. S. C. Mo. No. 17

Imperial, Missouri

5th REVISED SHEET 3
REPLACING 4th REVISED SHEET 3

EXCHANGE AREA MAP

RECEIVED
OCT 30 1998



T43N
T42N

T42N
T41N

T41N
T40N

①

②

SEE
INSET
"A"

INSET "A"

Missouri Public
Service Commission
FILED NOV 30 1998

CANCELLED
June 29, 2007
TO-2002-185
Missouri Public
Service Commission

R4E | R5E

Priscilla Hill-Ardoin

R5E | R6E

By HORACE WILKING, JR. President - Missouri
Southwestern Bell Telephone Company

NOV 30 1998

OCT 30 1998

Effective: September 15, 1996

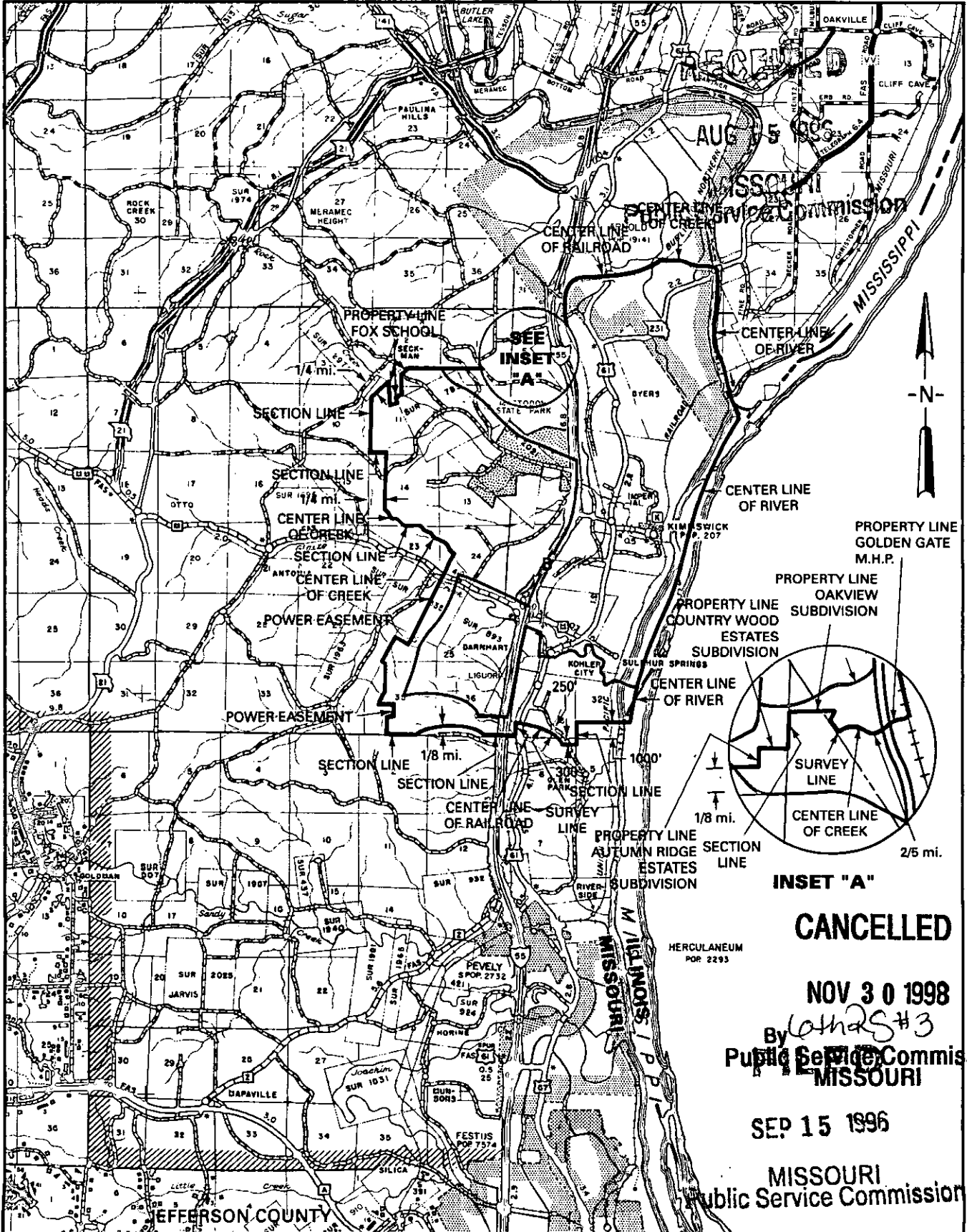
NO SUPPLEMENT TO THIS TARIFF WILL BE ISSUED EXCEPT FOR THE PURPOSE OF CANCELING THIS TARIFF.

Imperial, Missouri

P. S. C. Mo. No. 17

5th REVISED SHEET 3
REPLACING 4th REVISED SHEET 3

EXCHANGE AREA MAP



T43N
T42N

T42N
T41N

CANCELLED

NOV 30 1998

By *[Signature]* #3
Public Service Commission
MISSOURI

SEP 15 1996

MISSOURI
Public Service Commission

T41N
T40N

R4E | R5E

R5E | R6E

By HORACE WILKINS, JR. President - Missouri
Southwestern Bell Telephone Company
St. Louis, Missouri

Issued: August 15, 1996

Effective: September 15, 1996

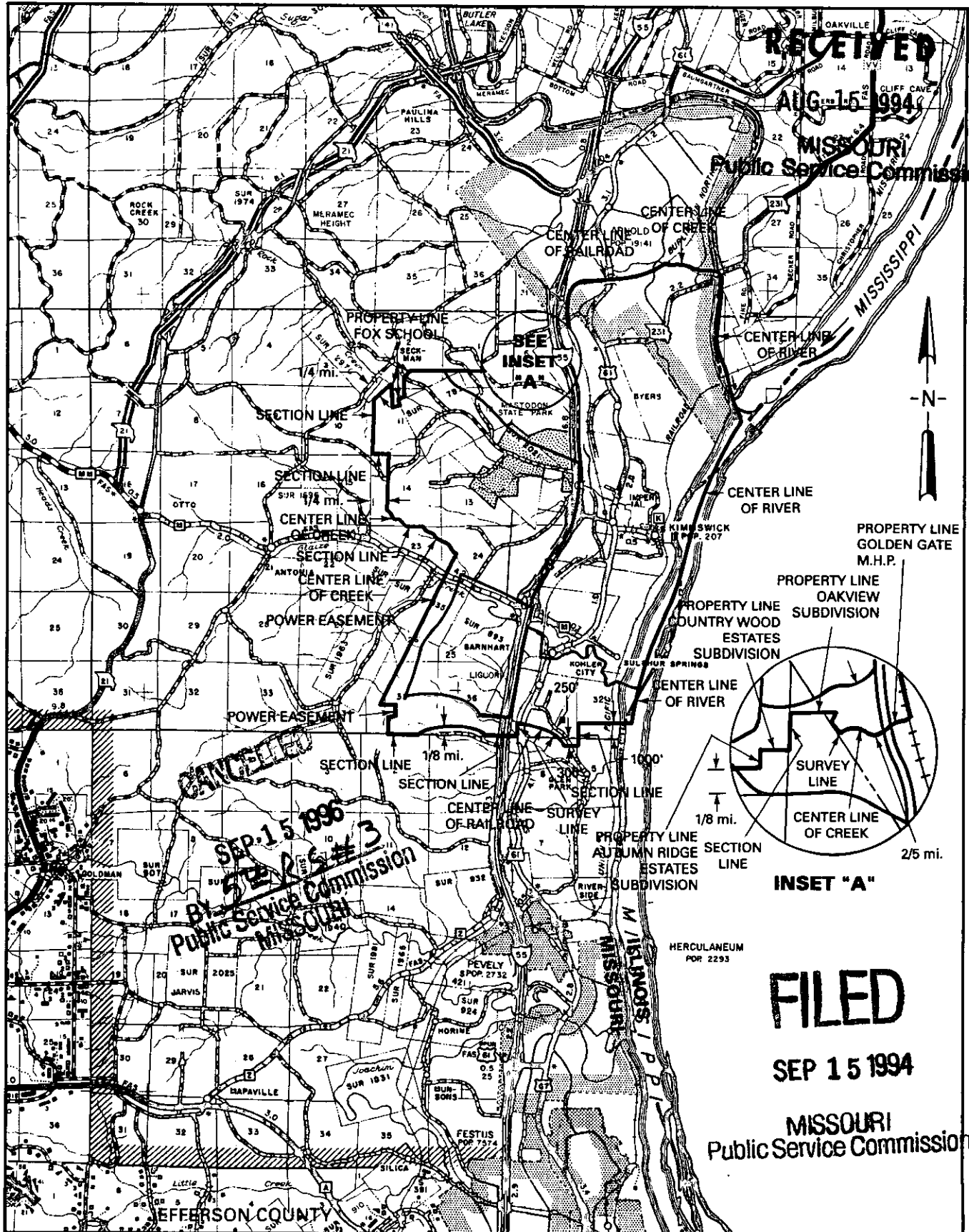
NO SUPPLEMENT TO THIS TARIFF WILL
BE ISSUED EXCEPT FOR THE PURPOSE OF
CANCELING THIS TARIFF.

P. S. C. Mo. No. 17

Imperial, Missouri

4th REVISED SHEET 3
REPLACING 3rd REVISED SHEET 3

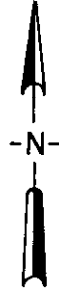
EXCHANGE AREA MAP



RECEIVED
AUG 15 1994

MISSOURI
Public Service Commission

T43N
T42N

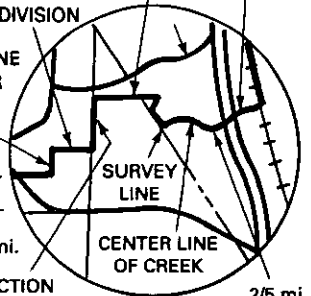


PROPERTY LINE
GOLDEN GATE
M.H.P.

PROPERTY LINE
OAKVIEW
SUBDIVISION

PROPERTY LINE
COUNTRY WOOD
ESTATES
SUBDIVISION

PROPERTY LINE
AUTUMN RIDGE
ESTATES
SUBDIVISION



T42N
T41N

INSET "A"

FILED

SEP 15 1994

MISSOURI
Public Service Commission

T41N
T40N

R4E | R5E

R5E | R6E

By M. H. SCHULTEIS, Executive Director - External Affairs
Southwestern Bell Telephone Company
St. Louis, Missouri

Issued: August 15, 1994

Effective: September 15, 1994

INDEPENDENCE

SEE

KANSAS CITY DISTRICT EXCHANGE

under Kansas City

Effective July 1, 1938

No supplement to this tariff will be issued except for the purpose of canceling this tariff.

MISSOURI PORTION-HAMBURG, IOWA, EXCHANGE
20th Revised Sheet 1
Replacing 19th Revised Sheet 1

RECEIVED

SOUTHWESTERN BELL TELEPHONE COMPANY
LOCAL EXCHANGE TARIFF

JAN 17 1995

1.1 GENERAL

This Tariff is governed, except as otherwise specified herein, by all General Tariffs of the Southwestern Bell Telephone Company on file in the State of Missouri, which are hereby made a part of this Tariff. Unless otherwise specified, the charges quoted in this Tariff or in any other Missouri Tariff are for periods of one month, are payable monthly in advance and entitle the customer to Exchange Telephone Service within the Hamburg Exchange Area.

MO. PUBLIC SERVICE COMM.

This exchange area includes, in addition to the Missouri portion, certain territory in the State of Iowa comprising the cities of Hamburg, Riverton and vicinities, as shown on the Exchange Area Map for this exchange.

1.2 RATES

CANCELLED

1.2.1 Within the Missouri portion of the exchange area:

1. Monthly Rates

DEC 30 1998
By *2154RS #1*
Public Service Commission
MISSOURI

	<u>Monthly Rate</u>	<u>Allowance</u>
Business		
One-Party Flat	(CR) \$23.70	N/A
Option 1 (Measured)	↓ 17.15	0
Option 2 (Measured)	(CR) 22.70	6 Hrs
Residence		
One-Party Flat	11.45	N/A
Basic (Measured)	7.50	0
Budget (Measured)	9.25	\$3.00

(RT)
(RT)

a. The following exchange usage rates apply in addition to the Residence Measured Service Line rates:

<u>Call Area</u>	<u>Distance in Miles</u>	<u>Dial Station-to-Station</u>	
		<u>Initial Minute Rate</u>	<u>Each Additional Minute Rate</u>
A	0-10	\$.05	\$.01
B	11-15	.07	.013
C	16-20	.09	.015
D	Over 20	.11	.017

b. Business exchange usage rates - \$.03 per minute.

FILED

Issued: **JAN 17 1995**

Effective: **FEB 17 1995**

FEB 17 1995

By HORACE WILKINS, JR., President-Missouri
Southwestern Bell Telephone Company
St. Louis, Missouri

MISSOURI
Public Service Commission

No supplement to this tariff will be issued except for the purpose of canceling this tariff.

MISSOURI PORTION-HAMBURG, IOWA, EXCHANGE
19th Revised Sheet 1
Replacing 18th Revised Sheet 1

SOUTHWESTERN BELL TELEPHONE COMPANY
LOCAL EXCHANGE TARIFF

RECEIVED

1.1 GENERAL

This Tariff is governed, except as otherwise specified herein by all other Tariffs of the Southwestern Bell Telephone Company on file in the State of Missouri, which are hereby made a part of this Tariff. ^{OCT 25 1993} ^{MISSOURI Public Service Commission} Otherwise specified, the charges quoted in this Tariff or in any other Missouri Tariff are for periods of one month, are payable monthly in advance and entitle the customer to Exchange Telephone Service within the Hamburg Exchange Area.

This exchange area includes, in addition to the Missouri portion, certain territory in the State of Iowa comprising the cities of Hamburg, Riverton and vicinities, as shown on the Exchange Area Map for this exchange.

1.2 RATES

CANCELLED

1.2.1 Within the Missouri portion of the exchange area:

1. Monthly Rates

Monthly Rate

FEB 17 1995
BY 204 R.S. #1
MISSOURI Public Service Commission

(AT)	Business			
(CT)	One-Party Flat	\$28.95		N/A
(AT)	Option 1 (Measured)	(NR) 21.00		0
(AT)	Option 2 (Measured)	(NR) 27.75		6 Hrs
(MT)	Public Access Line	28.95		0
(MT)	Public Carrier Access Line	23.00		0
(AT)	Residence			
(CT)	One-Party Flat	11.45		N/A
(RT)				
(AT)	Basic (Measured)	(NR) 7.50		0
(AT)	Budget (Measured)	(NR) 9.25	(AT)(NR) \$3.00	

a. The following exchange usage rates apply in addition to the Residence Measured Service Line rates:

Call Area	Distance in Miles	Dial Station-to-Station	
		Initial Minute Rate	Each Additional Minute Rate
A	0-10	(NR) \$.05	(NR) \$.01
B	11-15	.07	.013
C	16-20	.09	.015
D	Over 20	(NR) .11	(NR) .017

FILED

(AT)

(AT)(NR)

b. Business exchange usage rates - \$.03 per minute

NOV 26 1993

Issued: **OCT 26 1993**

Effective: **NOV 26 1993**

MISSOURI

By M. H. SCHULTEIS, Division Manager-Regulatory & Industry Relations
Southwestern Bell Telephone Company
St. Louis, Missouri

Public Service Commission

No supplement to this tariff will be issued except for the purpose of canceling this tariff.

MISSOURI PORTION-HAMBURG,
IOWA, EXCHANGE
Original Sheet 1.01

SOUTHWESTERN BELL TELEPHONE COMPANY
LOCAL EXCHANGE TARIFF

RECEIVED

1.2 RATES (Continued)

OCT 25 1993

(MT)

2. Coin Rates

MISSOURI
Public Service Commission

(MT)

Local messages originating at semi-public and public telephones are charged at \$.35 each.

(RT)

CANCELLED

DEC 30 1998
By *LSRS#1.01*
Public Service Commission
MISSOURI

FILED

NOV 26 1993

MISSOURI
Public Service Commission

Issued:

OCT 26 1993

Effective:

NOV 26 1993

By M. H. SCHULTEIS, Division Manager-Regulatory & Industry Relations
Southwestern Bell Telephone Company
St. Louis, Missouri