

No Supplement to this tariff will be issued except for the purpose of canceling this tariff.

Missouri Portion-
Cross-Boundary Exchange
Adoption Notice
2nd Revised Sheet 1
Replacing 1st Revised Sheet 1

ADOPTION NOTICE

- (CT) Southwestern Bell Telephone, L.P., d/b/a AT&T Missouri, hereby adopts, ratifies, and makes its own, in every respect as if the same had been originally filed by it, all schedules, rules, notices, concurrences, schedule agreements, divisions, authorities, or other instruments whatsoever filed with the Public
- (RT) Service Commission, State of Missouri, by Southwestern Bell Telephone Company prior to December 30, 2001, the beginning of Southwestern Bell Telephone, L.P.'s possession. By this notice,
- (CT) Southwestern Bell Telephone, L.P., d/b/a AT&T Missouri, also adopts and ratifies all supplements or amendments to any of the above schedules, etc., which Southwestern Bell Telephone, L.P., d/b/a
- (AT) Southwestern Bell Telephone Company and d/b/a SBC Missouri, has heretofore filed with said Commission.

Issued: November 29, 2005

Effective: December 29, 2005

By CINDY BRINKLEY, President-Missouri
Southwestern Bell Telephone, L.P., d/b/a AT&T Missouri
St. Louis, Missouri

P.S.C. Mo.- No. 17

REC'D JAN 17 2003

No Supplement to this
tariff will be issued
except for the purpose
of canceling this tariff.

Missouri Portion-
Cross-Boundary Exchange
Adoption Notice
1st Revised Sheet
Replacing Original Sheet

ADOPTION NOTICE

(CT)

Southwestern Bell Telephone, L.P., d/b/a SBC Missouri, hereby adopts, ratifies, and makes its own, in every respect as if the same had been originally filed by it, all schedules, rules, notices, concurrences, schedule agreements, divisions, authorities, or other instruments whatsoever filed with the Public Service Commission, State of Missouri, by Southwestern Bell Telephone, L.P., d/b/a Southwestern Bell Telephone Company prior to December 30, 2001, the beginning of Southwestern Bell Telephone, L.P.'s possession. By this notice, Southwestern Bell Telephone, L.P., d/b/a SBC Missouri, also adopts and ratifies all supplements or amendments to any of the above schedules, etc., which Southwestern Bell Telephone, L.P., d/b/a Southwestern Bell Telephone Company, has heretofore filed with said Commission.

(CT)

CANCELLED

DEC 16 2005

2nd RS 1

Public Service Commission
MISSOURI

Issued: January 17, 2003

Effective: February 16, 2003

By CINDY BRINKLEY, President-Missouri
Southwestern Bell Telephone, L.P., d/b/a SBC Missouri
St. Louis, Missouri

Missouri Public
Service Commission

FILED FEB 16 2003

No Supplement to this tariff will be issued except for the purpose of canceling this tariff.

Missouri Portion of Cross-Boundary Exchanges
Adoption Notice
Original Sheet 1

Missouri Public
Service Commission

ADOPTION NOTICE

REC'D DEC 27 2001

Southwestern Bell Telephone, L.P. hereby adopts, ratifies, and makes its own, in every respect as if the same had been originally filed by it, all schedules, rules, notices, concurrences, schedule agreements, divisions, authorities or other instruments whatsoever filed with the Public Service Commission, State of Missouri, by Southwestern Bell Telephone Company prior to December 30, 2001, the beginning of Southwestern Bell Telephone, L.P.'s possession. By this notice, Southwestern Bell Telephone, L.P. also adopts and ratifies all supplements or amendments to any of the above schedules, etc., which Southwestern Bell Telephone Company has heretofore filed with said Commission.

CANCELLED

FEB 16 2003
by ISTR Adoption
Public Service Commission
MISSOURI

Issued: December 27, 2001

Effective: ~~January 2, 2002~~

By: JAN NEWTON, President-Missouri Division
Southwestern Bell Telephone Company
St. Louis, Missouri

JAN 09 2002
Missouri Public

FILED JAN 09 2002
02 - 185

Service Commission

No Supplement to this tariff will be issued except for the purpose of canceling this tariff.

P.S.C. Mo.- No. 17

Missouri Portion-of Cross-Boundary Exchanges

Title Sheet

2nd Revised Sheet 1

Replacing 1st Revised Sheet 1

SOUTHWESTERN BELL TELEPHONE, L.P. d/b/a

(CT)

AT&T MISSOURI

SCHEDULE OF RATES

FOR

TELEPHONE SERVICE

(CT)

Southwestern Bell Telephone, L.P., d/b/a
AT&T Missouri hereby adopts this tariff.

Applying to its authorized territories within the State of Missouri.

Issued: November 29, 2005

Effective: December 29, 2005

By CINDY BRINKLEY, President-Missouri
Southwestern Bell Telephone, L.P., d/b/a AT&T Missouri
St. Louis, Missouri

REC'D JAN 17 2003

P.S.C. Mo.- No. 17

Missouri Portion-of Cross-Boundary Exchanges

Title Sheet

1st Revised Sheet 1

Replacing Original Sheet 1

No Supplement to this
tariff will be issued
except for the purpose
of canceling this tariff.

SOUTHWESTERN BELL TELEPHONE, L.P. d/b/a

(CT)

SBC MISSOURI

SCHEDULE OF RATES

FOR

TELEPHONE SERVICE

CANCELLED

DEC 16 2005

by 2nd RS 1
Public Service Commission
MISSOURI

(CT)

Southwestern Bell Telephone, L.P., d/b/a
SBC Missouri hereby adopts this tariff.

Applying to its authorized territories within the State of Missouri.

Issued: January 17, 2003

Effective: February 16, 2003

By CINDY BRINKLEY, President-SBC Missouri
Southwestern Bell Telephone, L.P., d/b/a SBC Missouri
St. Louis, Missouri

Missouri Public
Service Commission

FILED FEB 16 2003

No supplement to this tariff will be issued except for the purpose of canceling this tariff.

Missouri Portion of Cross-Boundary Exchanges
Title Sheet
Original Sheet 1

Missouri Public
Service Commission

REC'D DEC 27 2001

SOUTHWESTERN BELL TELEPHONE, L.P. d/b/a

SOUTHWESTERN BELL TELEPHONE COMPANY

SCHEDULE OF RATES

FOR

TELEPHONE SERVICE

CANCELLED

FEB 16 2003

LEFTHES
Public Service Commission
MISSOURI

Southwestern Bell Telephone, L.P., d/b/a
Southwestern Bell Telephone Company hereby adopts this tariff.

Missouri Public

FILED JAN 09 2002

02-185
Service Commission

Applying to its authorized territories within the State of Missouri.

Issued: December 27, 2001

Effective

By JAN NEWTON, President-Missouri
Southwestern Bell Telephone Company
St. Louis, Missouri

JAN 09 2002

CANCELLED
June 29, 2007
TO-2002-185
Missouri Public
Service Commission

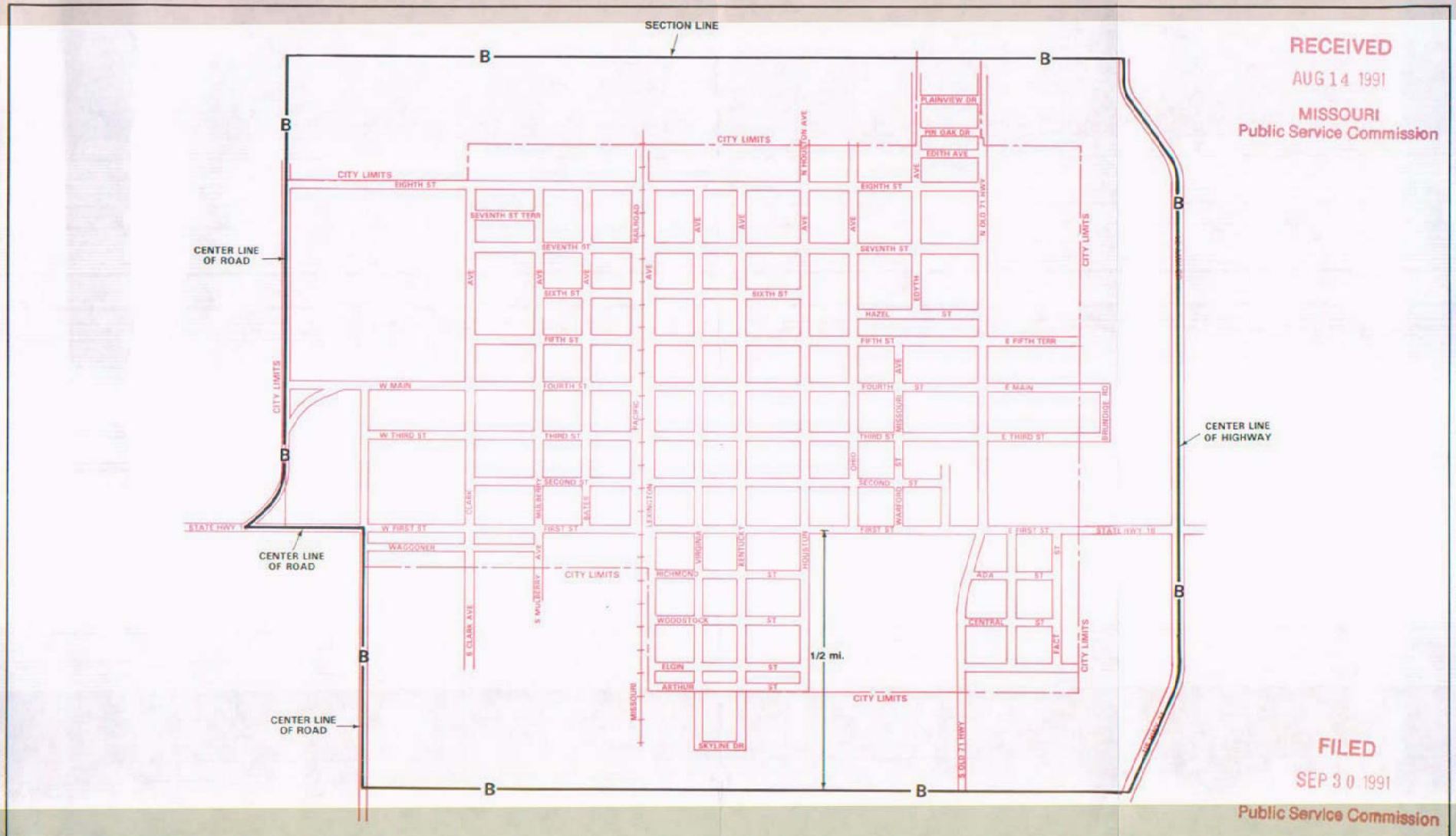
P. S. C. Mo. No. 17
BASE RATE AREA MAP

Adrian, Missouri

1st REVISED SHEET 2
REPLACING ORIGINAL SHEET 2

NO SUPPLEMENT TO THIS TARIFF WILL
BE ISSUED EXCEPT FOR THE PURPOSE OF
CANCELING THIS TARIFF.

RECEIVED
AUG 14 1991
MISSOURI
Public Service Commission



FILED
SEP 3 0 1991
Public Service Commission

Issued: AUG 23 1991

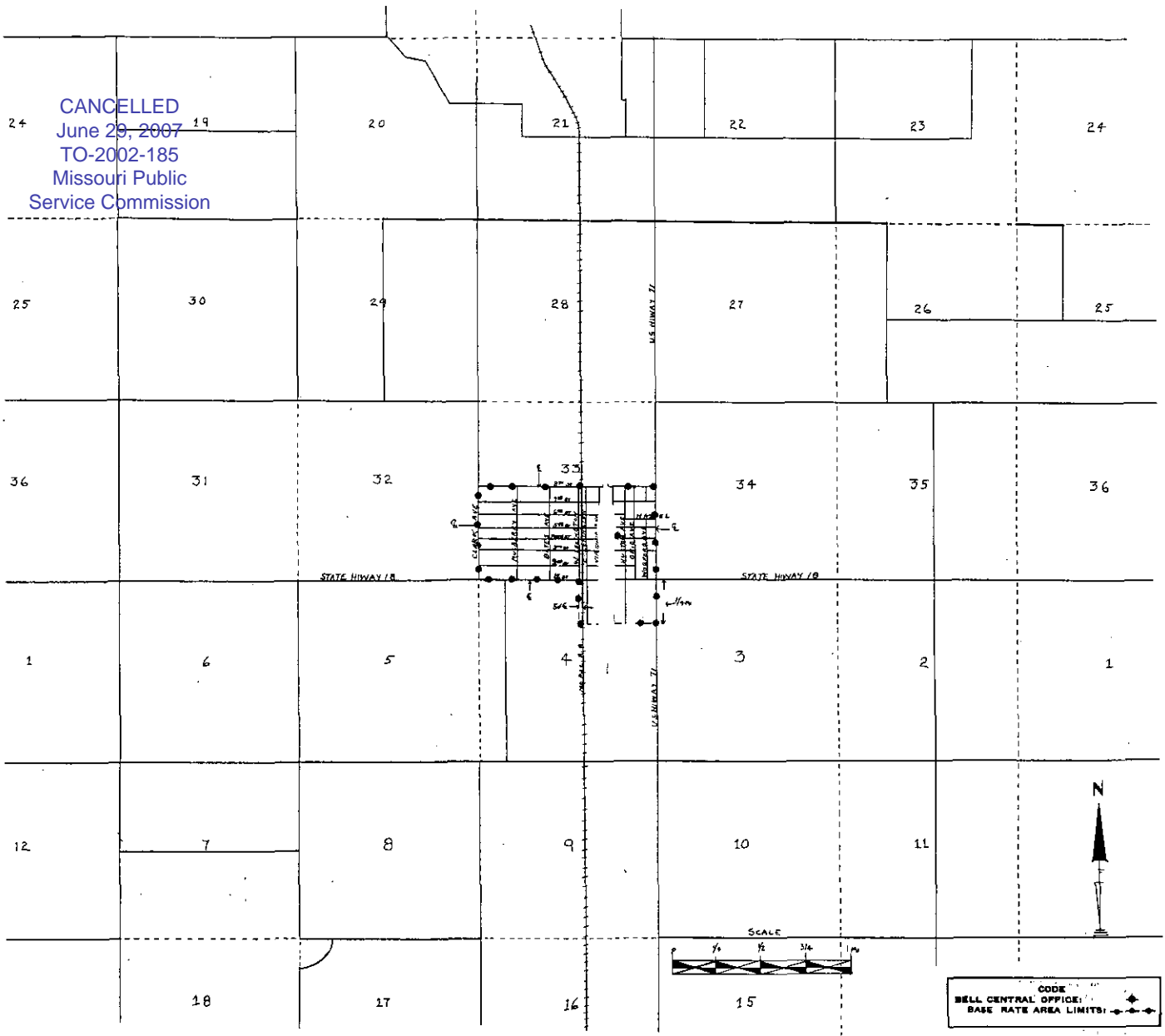
By R. D. BARRON, PRESIDENT, MISSOURI DIVISION
Southwestern Bell Telephone Company
St. Louis, Missouri

Effective: SEP 3 0 1991

NO SUPPLEMENT TO THIS TARIFF WILL BE ISSUED EXCEPT FOR THE PURPOSE OF CANCELING THIS TARIFF.

ST. LOUIS, MISSOURI
ORIGINAL SHEET 2
REPLACING WESTERN LIGHT & TELEPHONE
COMPANY'S P. S. C. No. 3
INITIAL RATE AREA MAP

P. S. C. Mo. No. 17
BASE RATE AREA MAP



CANCELLED
June 29, 2007
TO-2002-185
Missouri Public
Service Commission

Issued: June 1, 1955

By J. R. PETERSO: General Manager
Southwestern Bell Telephone Company
St. Louis, Missouri

Effective: July 1, 1955

CANCELLED
June 29, 2007
TO-2002-185
Missouri Public
Service Commission

P. S. C. Mo. No. 17
EXCHANGE AREA MAP

Adrian, Missouri

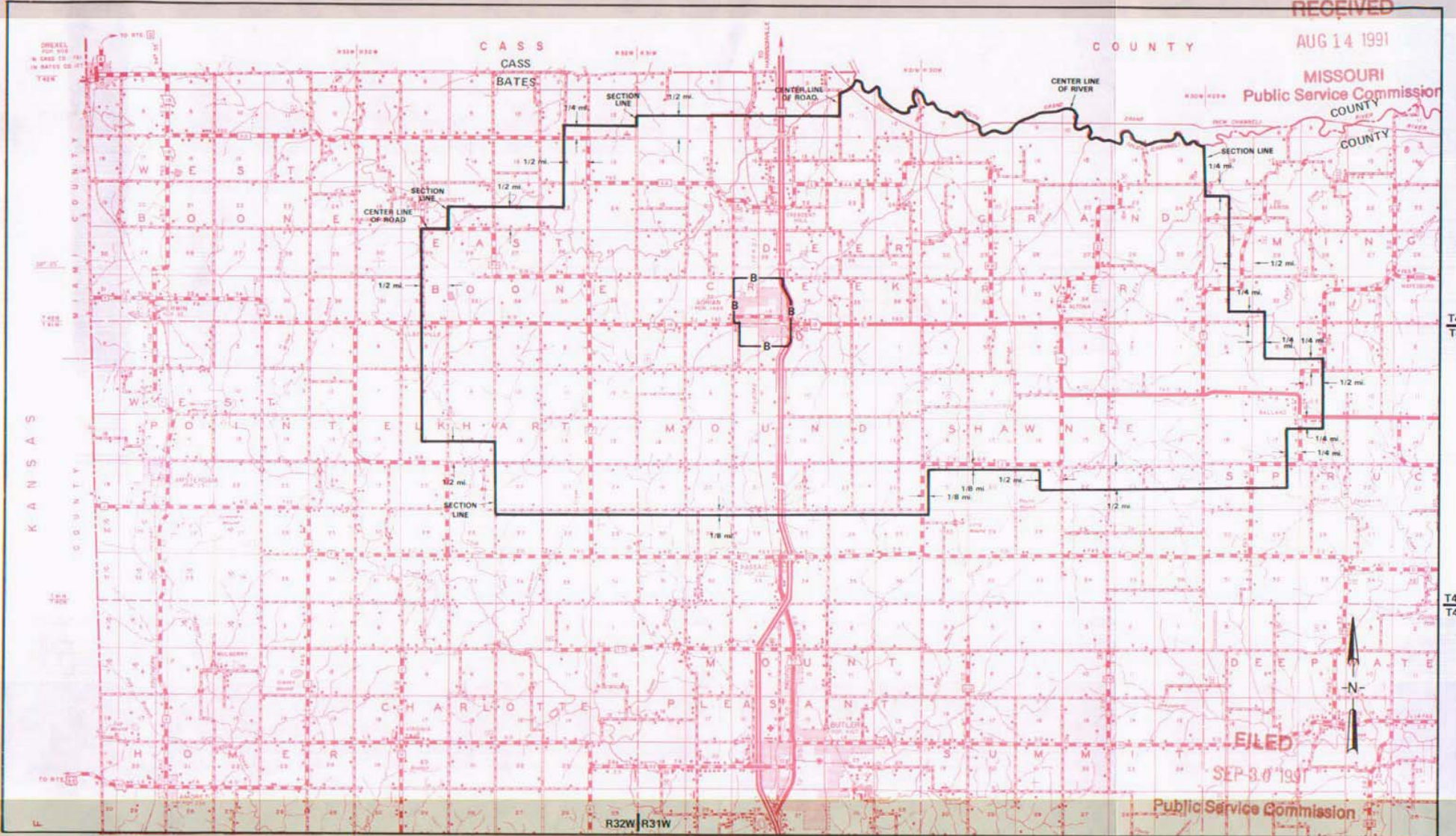
9th REVISED SHEET 3
REPLACING 8th REVISED SHEET 3

NO SUPPLEMENT TO THIS TARIFF WILL
BE ISSUED EXCEPT FOR THE PURPOSE OF
CANCELING THIS TARIFF.

RECEIVED

AUG 14 1991

MISSOURI
Public Service Commission



T42N
T41N

T41N
T40N

FILED

SEP 3 0 1991

Public Service Commission

ISSUED: AUG 23 1991

By R. D. BARRON, PRESIDENT, MISSOURI DIVISION
Southwestern Bell Telephone Company
St. Louis, Missouri

EFFECTIVE: SEP 3 0 1991

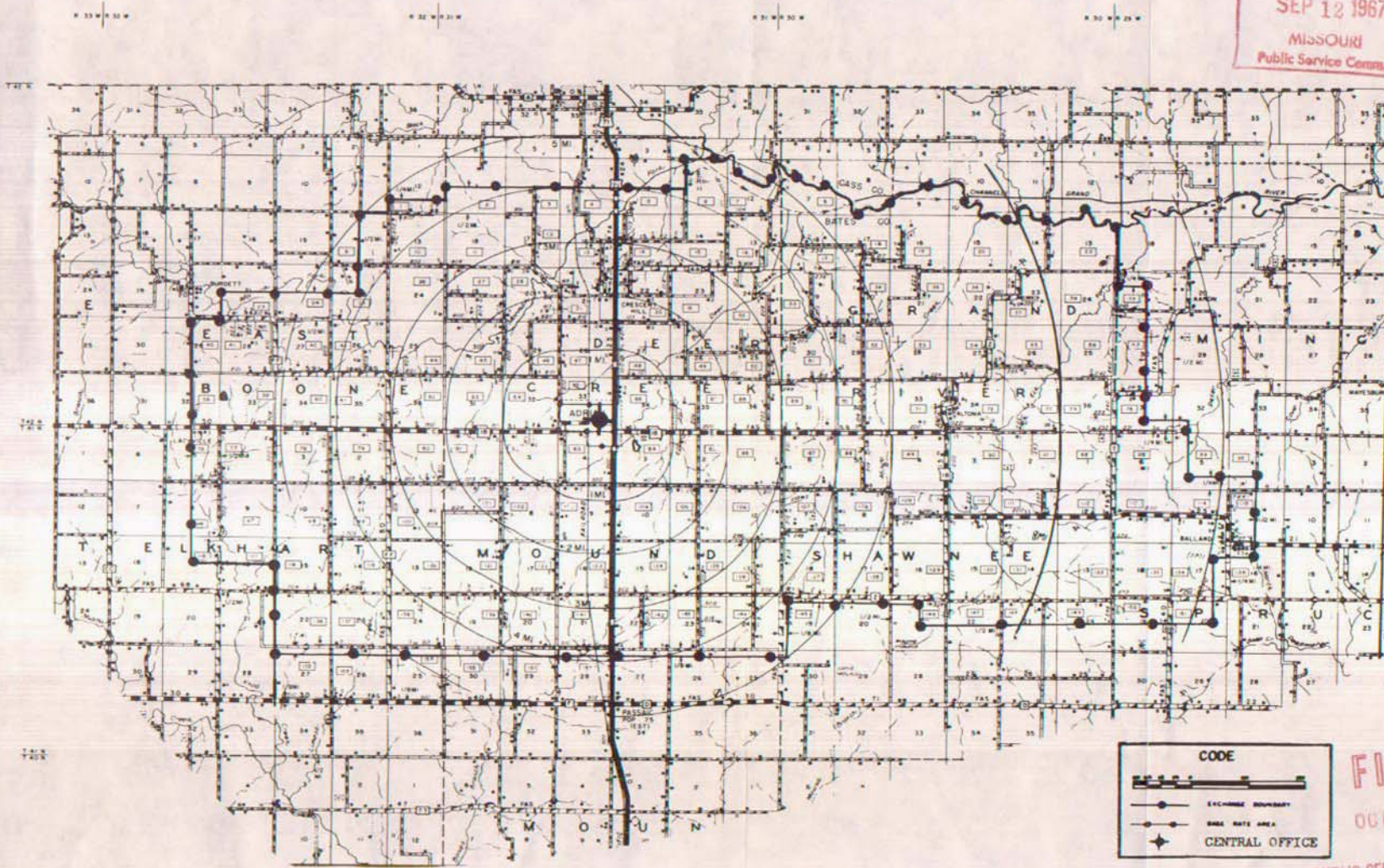
NO SUPPLEMENT TO THIS TARIFF WILL BE ISSUED EXCEPT FOR THE PURPOSE OF CANCELING THIS TARIFF.

P. S. C. Mo. No. 17 EXCHANGE AREA MAP

Adrian, Missouri
8th REVISED SHEET 3
REPLACING 7th REVISED SHEET 3

RECEIVED
SEP 12 1967
Missouri
Public Service Comm.

ADRIAN, MO.



CODE

— — — — — EXCHANGE BOUNDARY

— — — — — RATE AREA

★ CENTRAL OFFICE

FILED
OCT 14 1967
PUBLIC SERVICE COMMISSION

Issued: September 14, 1967

By R. R. SHOCKLEY, Vice President and General Manager
Southwestern Bell Telephone Company
St. Louis, Missouri

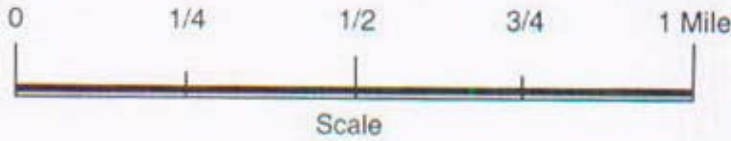
Effective: October 14, 1967

CANCELLED
June 29, 2007
Missouri Public
Service Commission

NO SUPPLEMENT TO THIS TARIFF WILL BE ISSUED EXCEPT FOR THE PURPOSE OF CANCELLING THIS TARIFF.

P. S. C. Mo. No. 17 BASE RATE AREA MAP

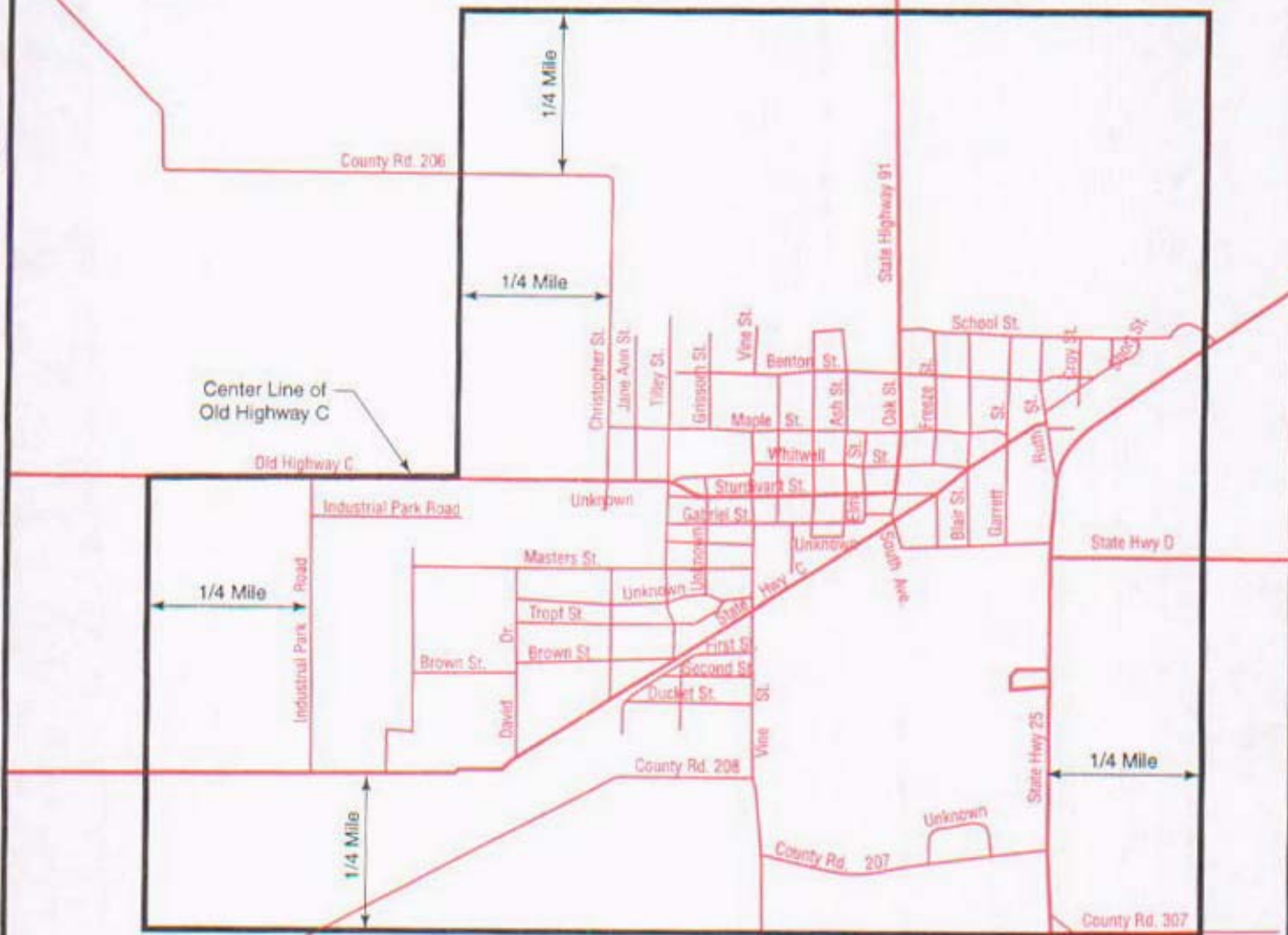
Advance, Missouri
2nd REVISED SHEET 1-A
REPLACING 1st REVISED SHEET 1-A



RECEIVED

APR 18 1997

MO. PUBLIC SERVICE COMM



CANCELLED
June 29, 2007
TO-2002-185
Missouri Public
Service Commission

FILED

JUN -2 1997

**MISSOURI
Public Service Commission**

Issued: April 18, 1997

By Karen E. Jennings, President Missouri
Southwestern Bell Telephone Company
St. Louis, Missouri

Effective: June 2, 1997

NO SUPPLEMENT TO THIS TARIFF WILL
BE ISSUED EXCEPT FOR THE PURPOSE OF
CANCELING THIS TARIFF.

P. S. C. Mo. No. 17
EXCHANGE AREA MAP

RECEIVED

Advance, Missouri

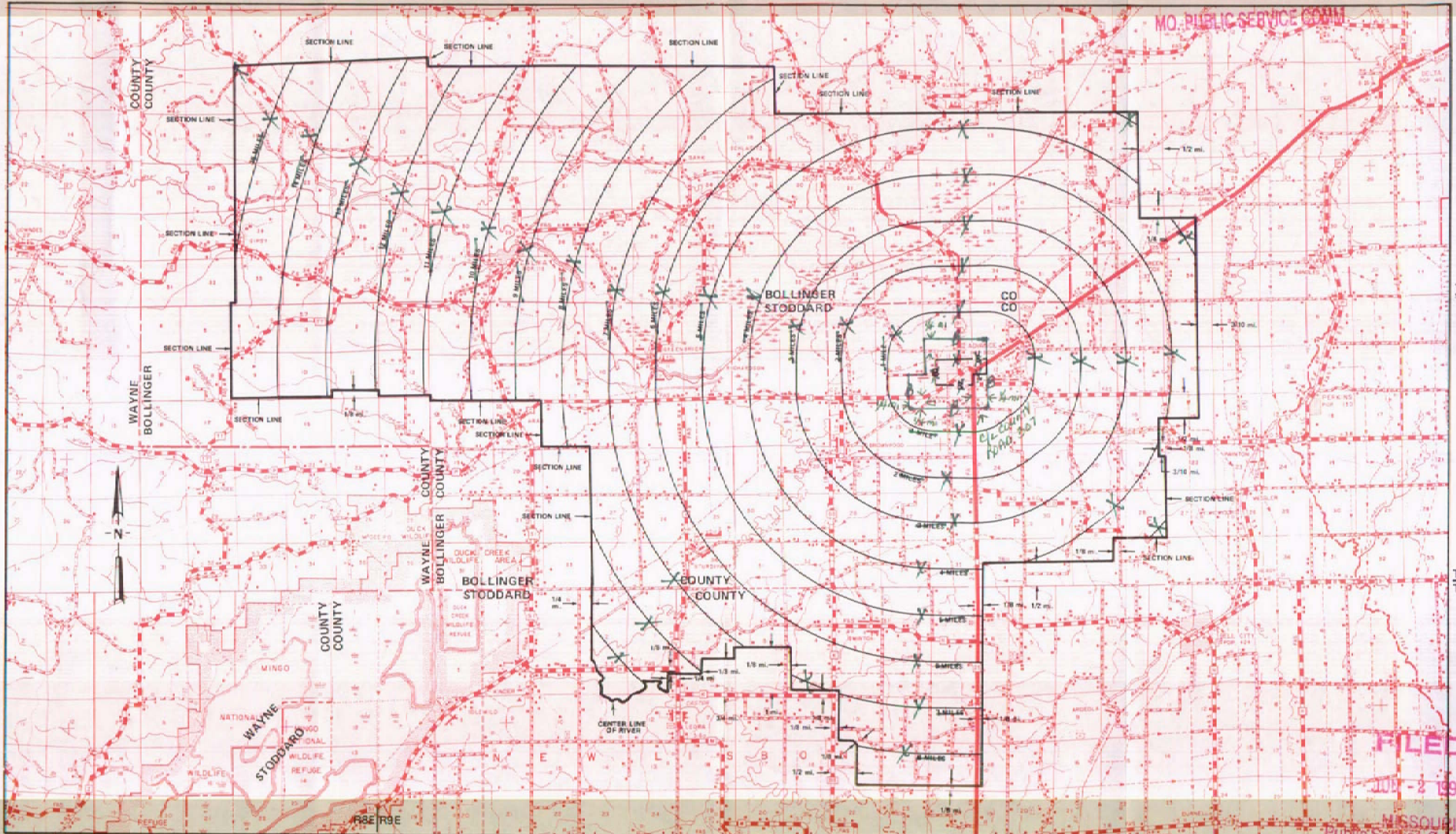
APR 18 1997

11
11th REVISED SHEET 3

12
12th REVISED SHEET 3

10

MO. PUBLIC SERVICE COM.



R7E|R8E

By R. D. BARRON, President, Missouri DIVISION
Southwestern Bell Telephone Company
St. Louis, Missouri

R9E|R10E

R10E|R11E

R11E|R12E

Issued: APRIL 6 1997
April 18, 1997

Effective: MAY 7 1994

June 2, 1997

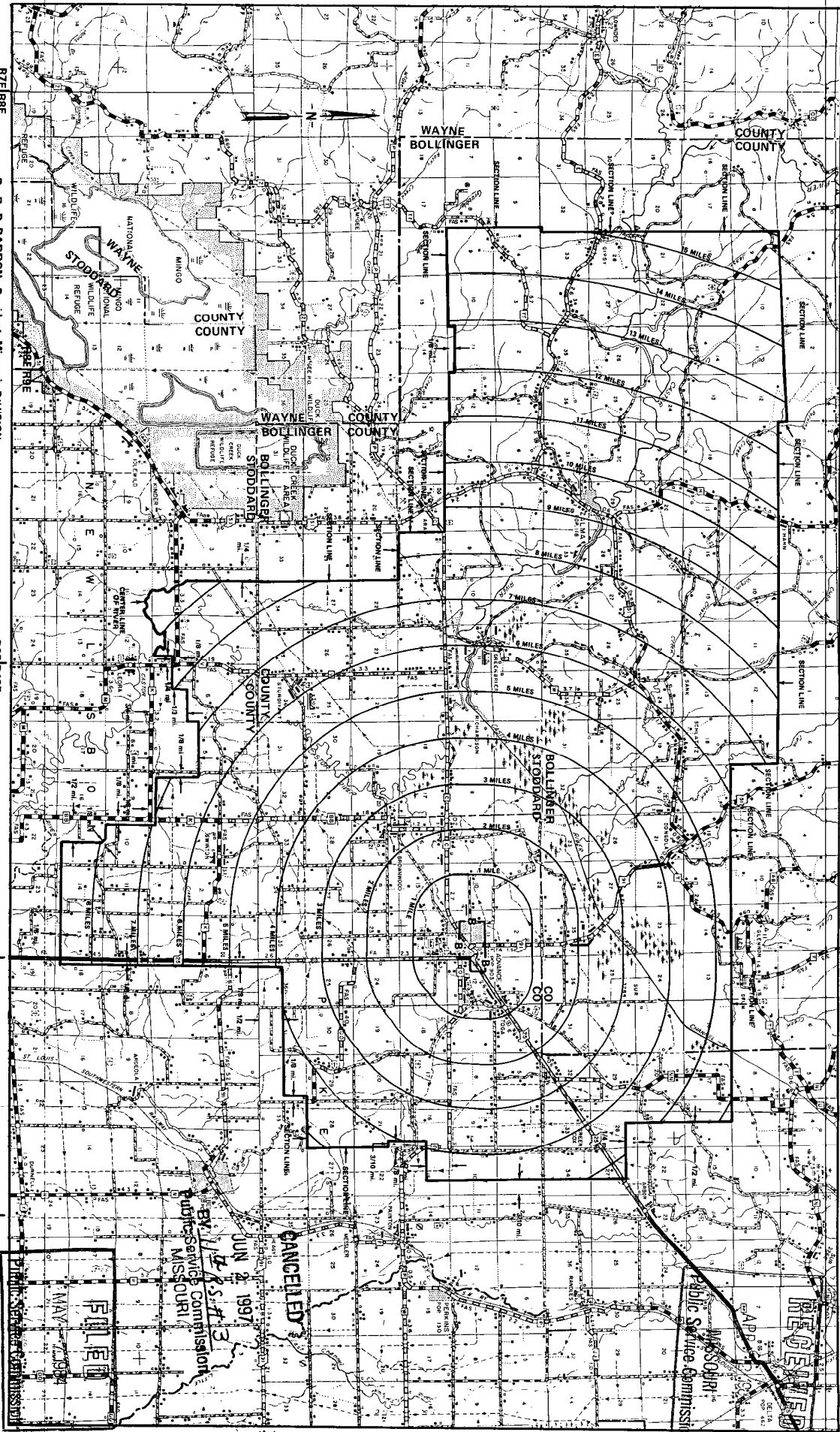
FILED
100-2-1997

MISSOURI
Public Service Commission

NO SUPPLEMENT TO THIS TARIFF WILL BE ISSUED EXCEPT FOR THE PURPOSE OF CANCELING THIS TARIFF.

P. S. C. Mo. No. 17
EXCHANGE AREA MAP

Advance, Missouri
10th REVISED SHEET 3
REPLACING 9th REVISED SHEET 3



Issued: APRIL 6, 1984

By R. D. BARON, President, Missouri Division
Southwestern Bell Telephone Company
St. Louis, Missouri

Effective: MAY 7, 1984

CANCELLED
JUN 2, 1997
BY P. S. C. MO.
Public Service Commission
MISSOURI

RECEIVED
Missouri
Public Service Commission

178N
177N

178N
178N

R7E|R8E

R9E|R10E

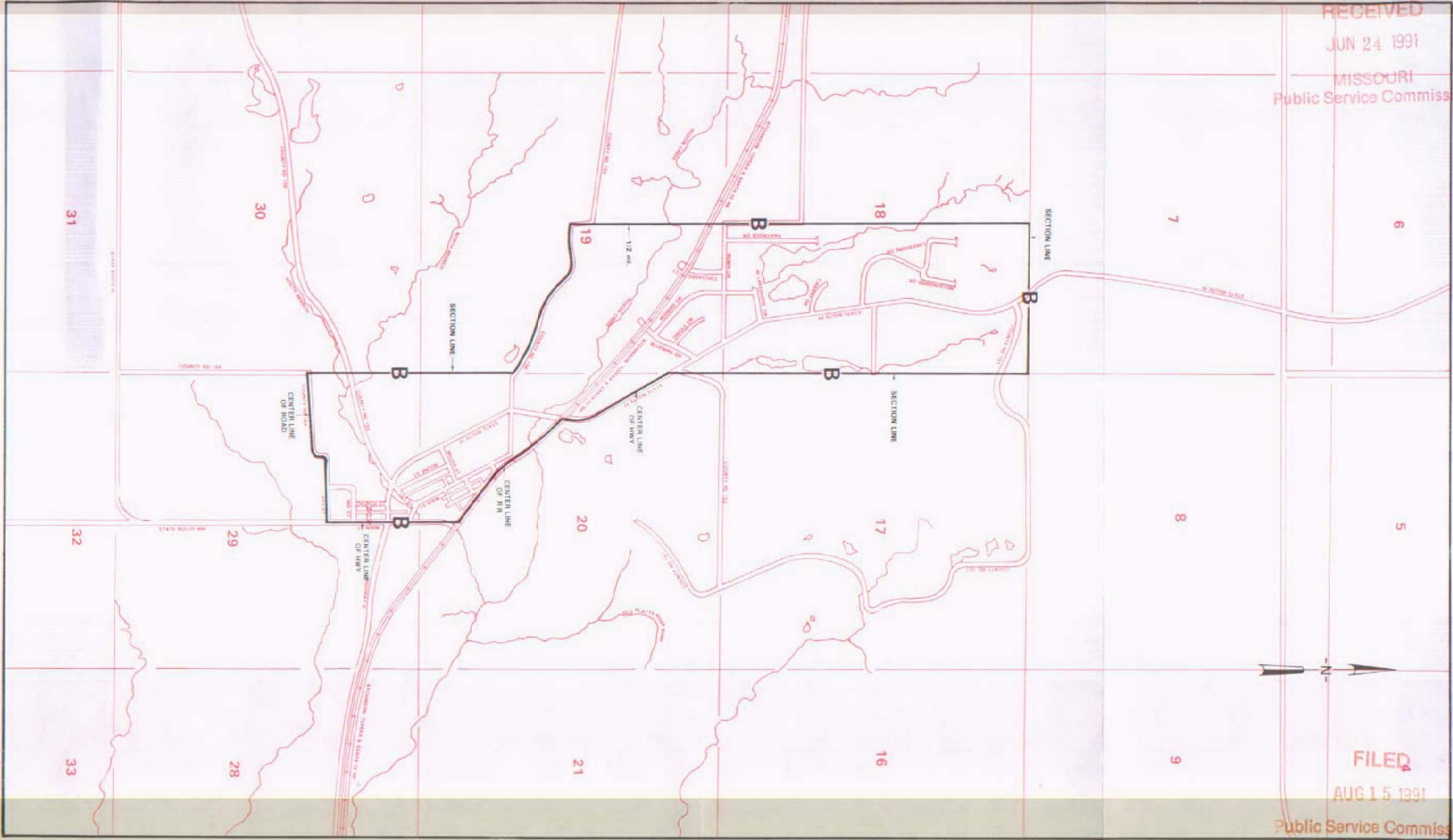
R10E|R11E

R11E|R12E

NO SUPPLEMENT TO THIS TARIFF WILL
BE ISSUED EXCEPT FOR THE PURPOSE OF
CANCELING THIS TARIFF.

P. S. C. Mo. No. 17
BASE RATE AREA MAP

Agency, Missouri
1st REVISED SHEET 2
REPLACING ORIGINAL SHEET 2



RECEIVED
JUN 24 1991
MISSOURI
Public Service Commission

FILED
AUG 15 1991
Public Service Commission

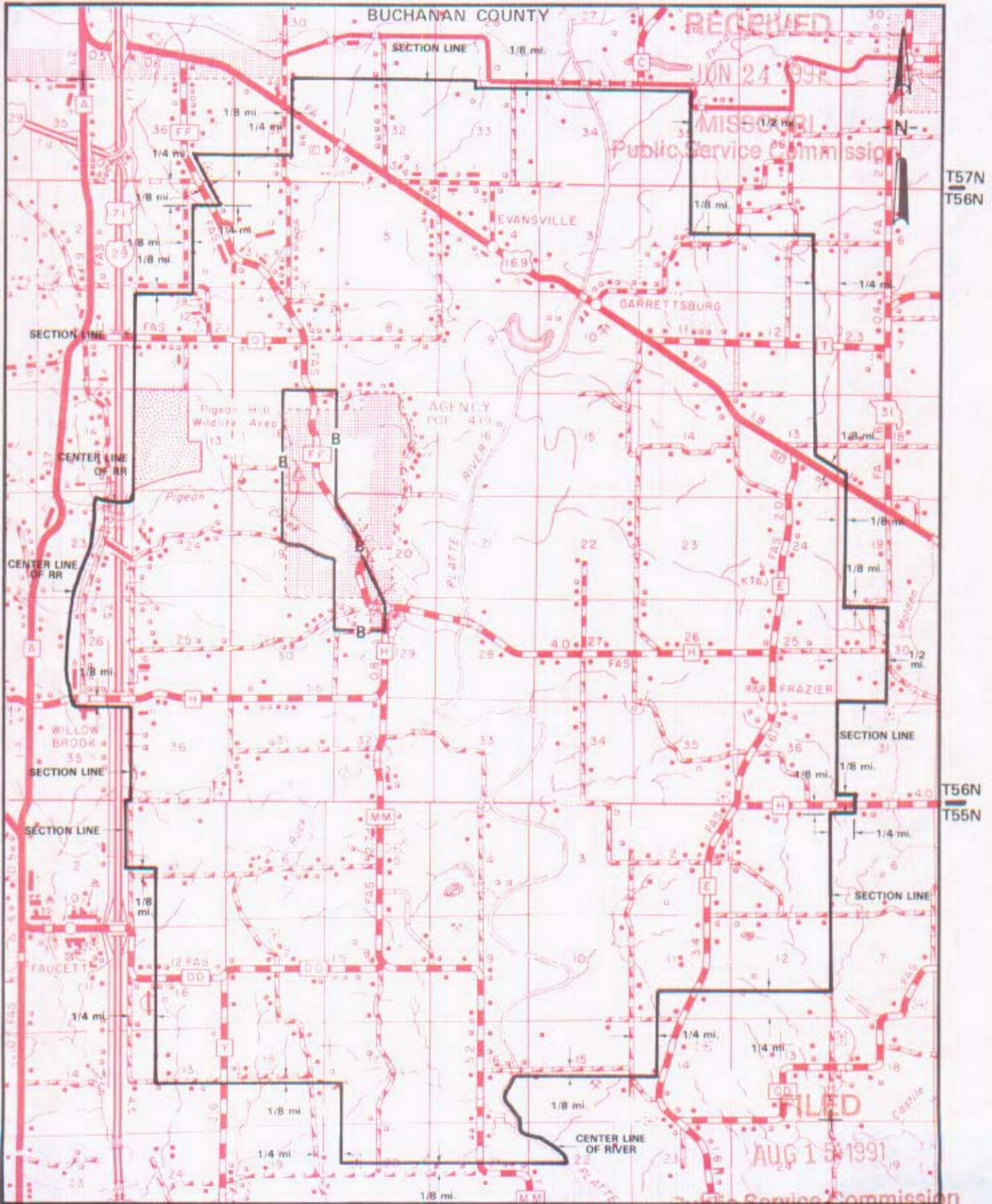
By R. D. BARRON, PRESIDENT, MISSOURI DIVISION
Southwestern Bell Telephone Company
St. Louis, Missouri

JUN 24 1991
Issued: _____

Effective: AUG 15 1991

NO SUPPLEMENT TO THIS TARIFF WILL
BE ISSUED EXCEPT FOR THE PURPOSE OF
CANCELING THIS TARIFF.

P. S. C. Mo. No. 17 EXCHANGE AREA MAP



CANCELLED
June 29, 2007
TO-2002-185
Missouri Public
Service Commission

Issued: JUN 24 1991

By R. D. BARRON, PRESIDENT, MISSOURI DIVISION
Southwestern Bell Telephone Company
St. Louis, Missouri

Effective: AUG 15 1991

SBC PSC MO #17
Altenburg – Frohna, Missouri
Original Sheet 2

Non-Scannable
Map

(Is viewable in the Data Center
200 Madison Street, 1st Floor
Jefferson City MO)

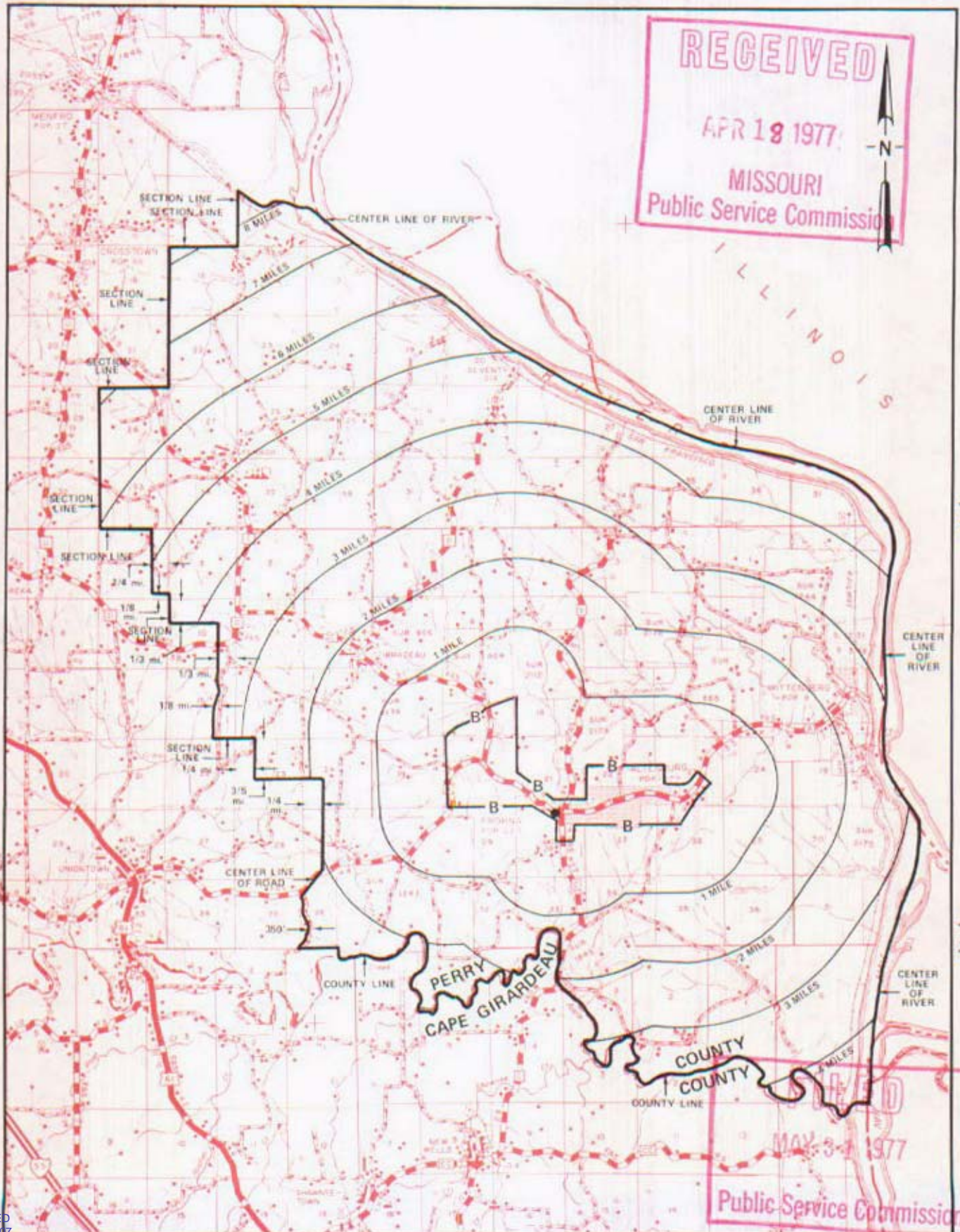
NO SUPPLEMENT TO THIS TARIFF WILL BE ISSUED EXCEPT FOR THE PURPOSE OF CANCELING THIS TARIFF.

P. S. C. Mo. No. 17

Altenburg-Frohna, Missouri

EXCHANGE AREA MAP

2nd REVISED SHEET 3
REPLACING 1st REVISED SHEET 3



CANCELLED
June 29, 2007
TO-2002-185
Missouri Public
Service Commission

By R. R. SHOCKLEY, Vice President, Missouri
Southwestern Bell Telephone Company

SOUTHWESTERN BELL TELEPHONE COMPANY
LOCAL EXCHANGE TARIFF

This exchange was sold to the South Missouri Telephone Company, effective August 1, 1961, and, therefore, all rates contained in Sheet 1-A of the Local Exchange Tariff and rate practices formerly authorized for this exchange are withdrawn.

RECEIVED
JUN 30 1961
MISSOURI
Public Service Comm.

FILED
AUG 1 - 1961

PUBLIC SERVICE COMMISSION

Issued under Order of the Public Service Commission Case No. 14208

Issued: July 1, 1961

Effective: August 1, 1961

By F. B. HUNT, Vice President and General Manager
St. Louis, Missouri

NO SUPPLEMENT TO THIS TARIFF WILL
BE ISSUED EXCEPT FOR THE PURPOSE
OF CANCELING THIS TARIFF.

P. S. C. Mo.-No. 17

ALTON, MISSOURI
1ST REVISED SHEET 3
CANCELING ORIGINAL SHEET 3

SOUTHWESTERN BELL TELEPHONE COMPANY
LOCAL EXCHANGE TARIFF

This exchange was sold to the South Missouri Telephone Company, effective August 1, 1961, and, therefore, all rates contained in Sheet 1-A of the Local Exchange Tariff and rate practices formerly authorized for this exchange are withdrawn.

RECEIVED
JUN 30 1961
MISSOURI
Public Service Comm.

FILED

AUG 1 - 1961

PUBLIC SERVICE COMMISSION

Issued under Order of the Public Service Commission Case No. 14208

Issued: July 1, 1961

Effective: August 1, 1961

By F. B. HUNT, Vice President and General Manager
St. Louis, Missouri

NO SUPPLEMENT TO THIS TARIFF WILL BE ISSUED EXCEPT FOR THE PURPOSE OF CANCELING THIS TARIFF.

P. S. C. Mo. No. 17

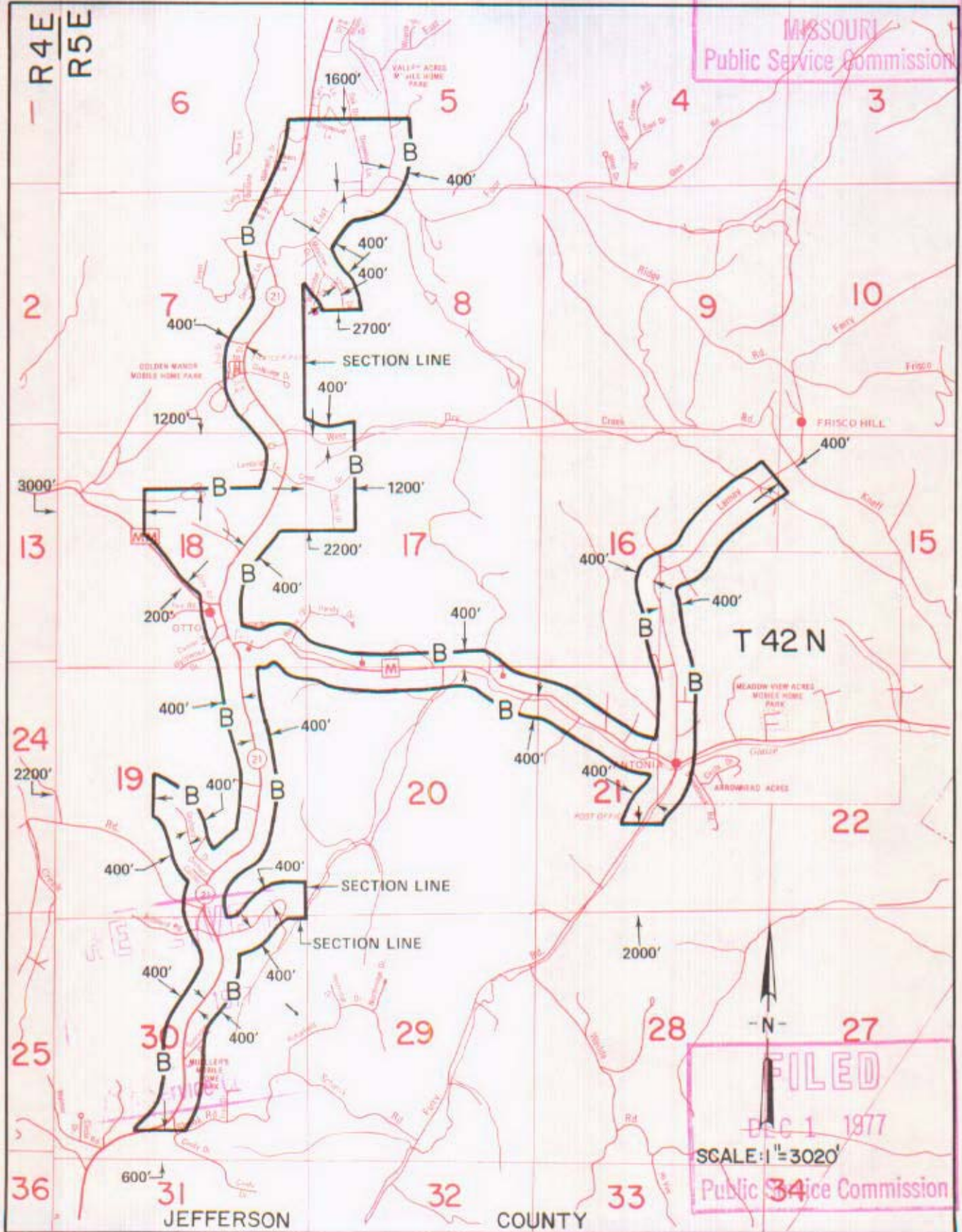
BASE RATE AREA MAP

Antonia, Missouri

1st REVISED SHEET 2
REPLACING ORIGINAL SHEET 2

MAY 20 1977

MISSOURI
Public Service Commission



FILED
DEC 1 1977
SCALE: 1" = 3020'
Public Service Commission

By R. R. SHOCKLEY, Vice President, Missouri
Southwestern Bell Telephone
St. Louis, Missouri

Effective: DEC 1 1977

CANCELLED
June 29, 2007
TO-2002-185
Missouri Public
Service Commission
Issued: MAY 23 1977

NO SUPPLEMENT TO THIS TARIFF WILL BE ISSUED EXCEPT FOR THE PURPOSE OF CANCELING THIS TARIFF.

P. S. C. Mo. No. 17

Antonia, Missouri

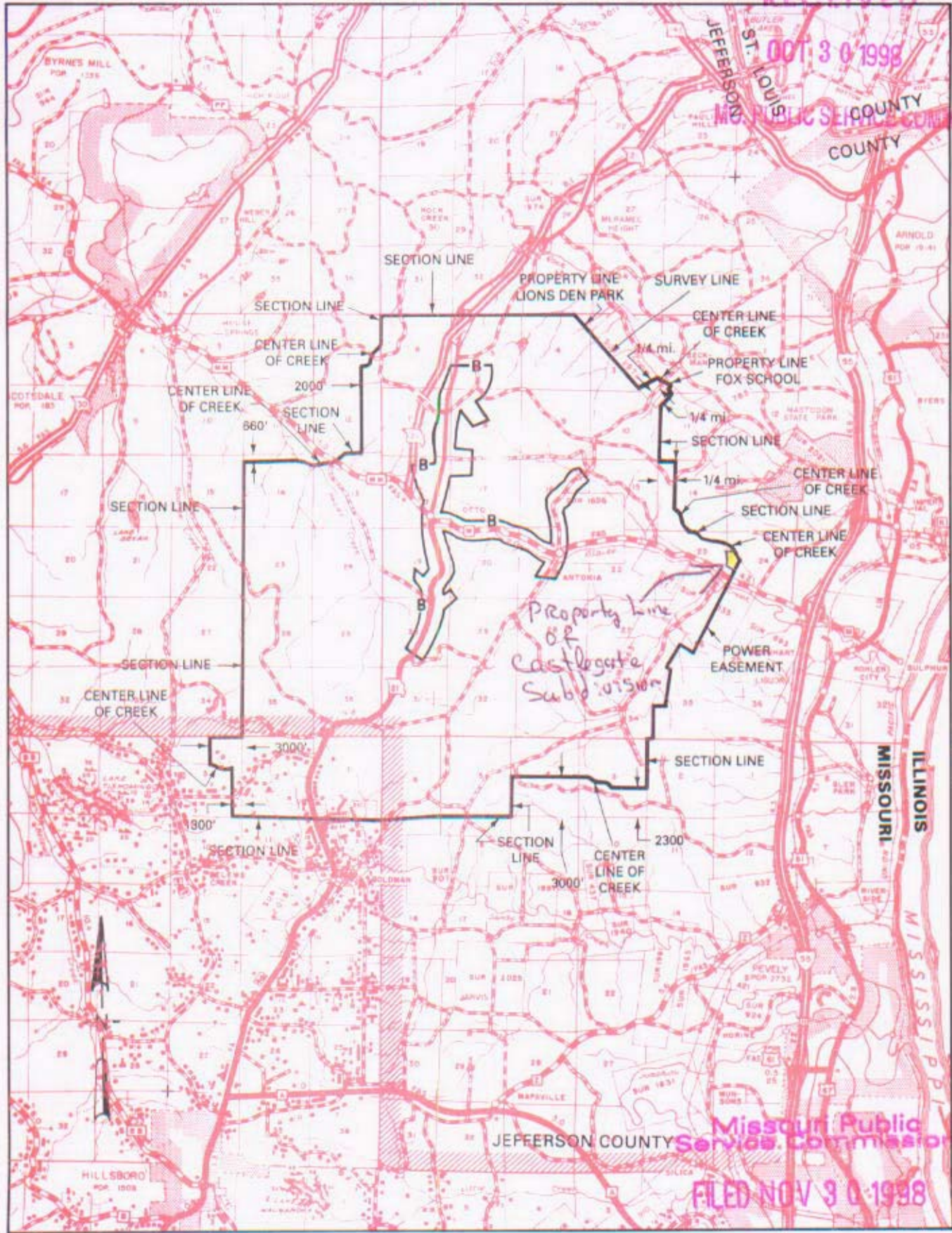
7th REVISED SHEET 3
REPLACING 6th REVISED SHEET 3

EXCHANGE AREA MAP

RECEIVED

OCT 3 0 1998

MISSOURI PUBLIC SERVICE COMMISSION



T43N
T42N

T42N
T41N

T41N
T40N

CANCELLED
June 29, 2007
TO-2002-185
Missouri Public
Service Commission

OCT 3 0 1998

R4E | R5E
Priscilla Hill-Ardoin
 By HORACE WILKINS, JR. President - Missouri
 Southwestern Bell Telephone Company
 St. Louis, Missouri

R5E | R6E
 NOV 3 0 1998

Issued: ~~August 15, 1996~~

Effective: ~~September 15, 1996~~

Missouri Public Service Commission

FILED NOV 3 0 1998

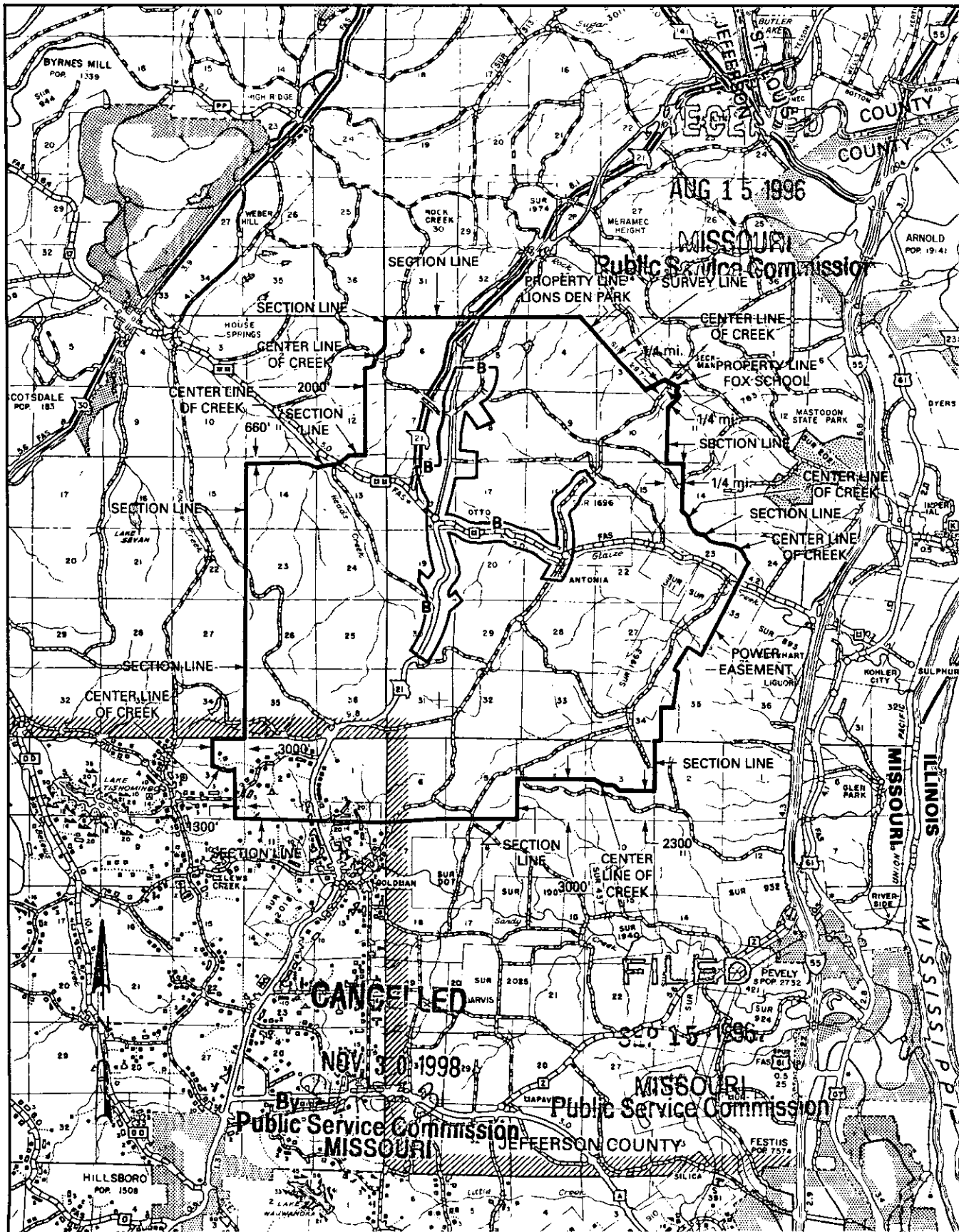
NO SUPPLEMENT TO THIS TARIFF WILL BE ISSUED EXCEPT FOR THE PURPOSE OF CANCELING THIS TARIFF.

P. S. C. Mo. No. 17

Antonia, Missouri

7th REVISED SHEET 3
REPLACING 6th REVISED SHEET 3

EXCHANGE AREA MAP



T43N
T42N

T42N
T41N

T41N
T40N

R4E | R5E

R5E | R6E

By HORACE WILKINS, JR. President - Missouri
Southwestern Bell Telephone Company
St. Louis, Missouri

Issued: August 15, 1996

Effective: September 15, 1996

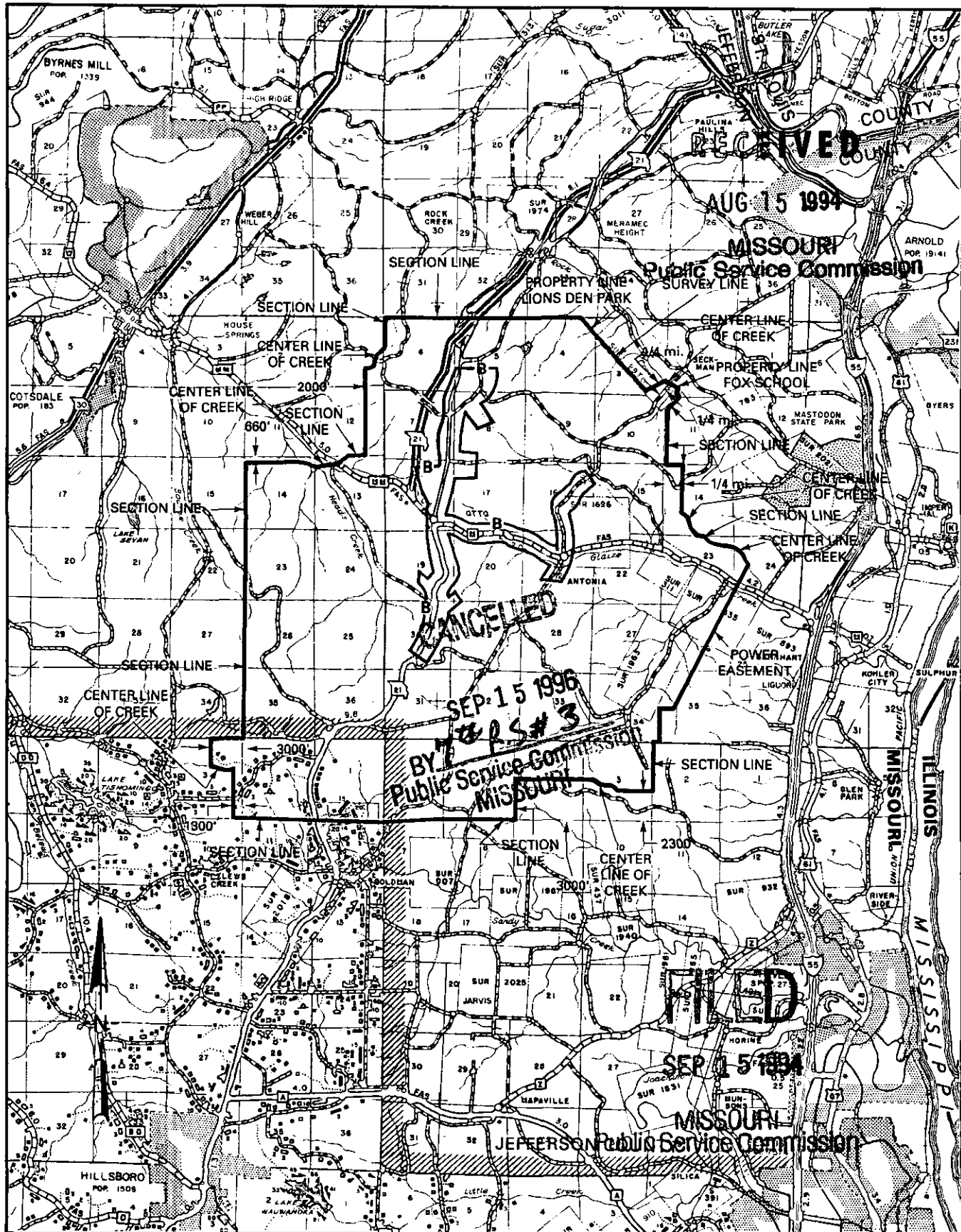
NO SUPPLEMENT TO THIS TARIFF WILL BE ISSUED EXCEPT FOR THE PURPOSE OF CANCELING THIS TARIFF.

Antonia, Missouri

P. S. C. Mo. No. 17

6th REVISED SHEET 3
REPLACING 5th REVISED SHEET 3

EXCHANGE AREA MAP



T43N
T42N

T42N
T41N

T41N
T40N

R4E | R5E

R5E | R6E

By M. H. SCHULTEIS, Executive Director - External Affairs
Southwestern Bell Telephone Company
St. Louis, Missouri

Issued: August 15, 1994

Effective: September 15, 1994

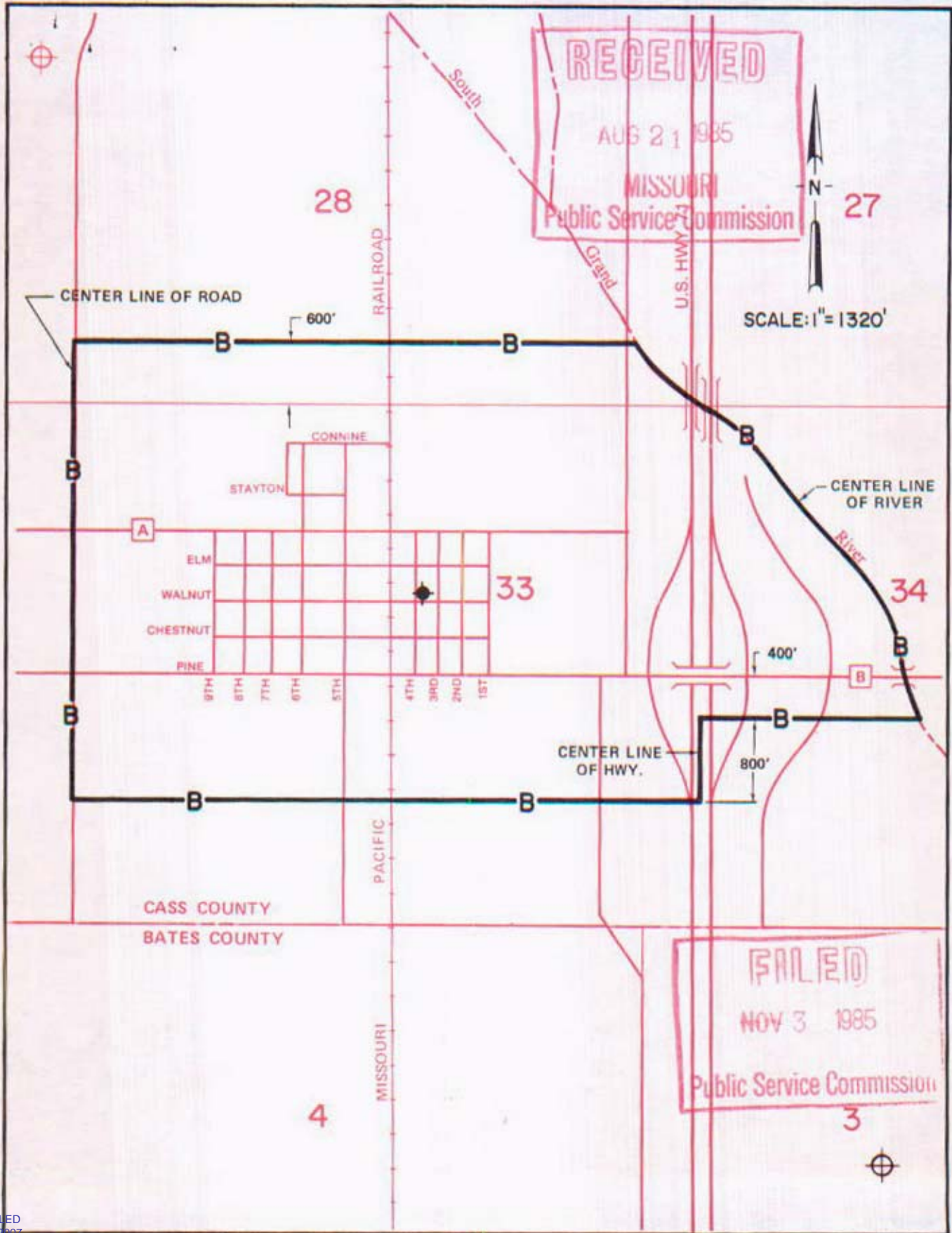
NO SUPPLEMENT TO THIS TARIFF WILL BE ISSUED EXCEPT FOR THE PURPOSE OF CANCELING THIS TARIFF.

P. S. C. Mo. No. 17

Archie, Missouri

BASE RATE AREA MAP

1st REVISED SHEET 2
REPLACING ORIGINAL SHEET 2



CANCELLED
June 29, 2007
TO-2002-185
Missouri Public
Service Commission

By R. D. BARRON, PRESIDENT - MISSOURI DIVISION
Southwestern Bell Telephone Company

AUG 26 1985

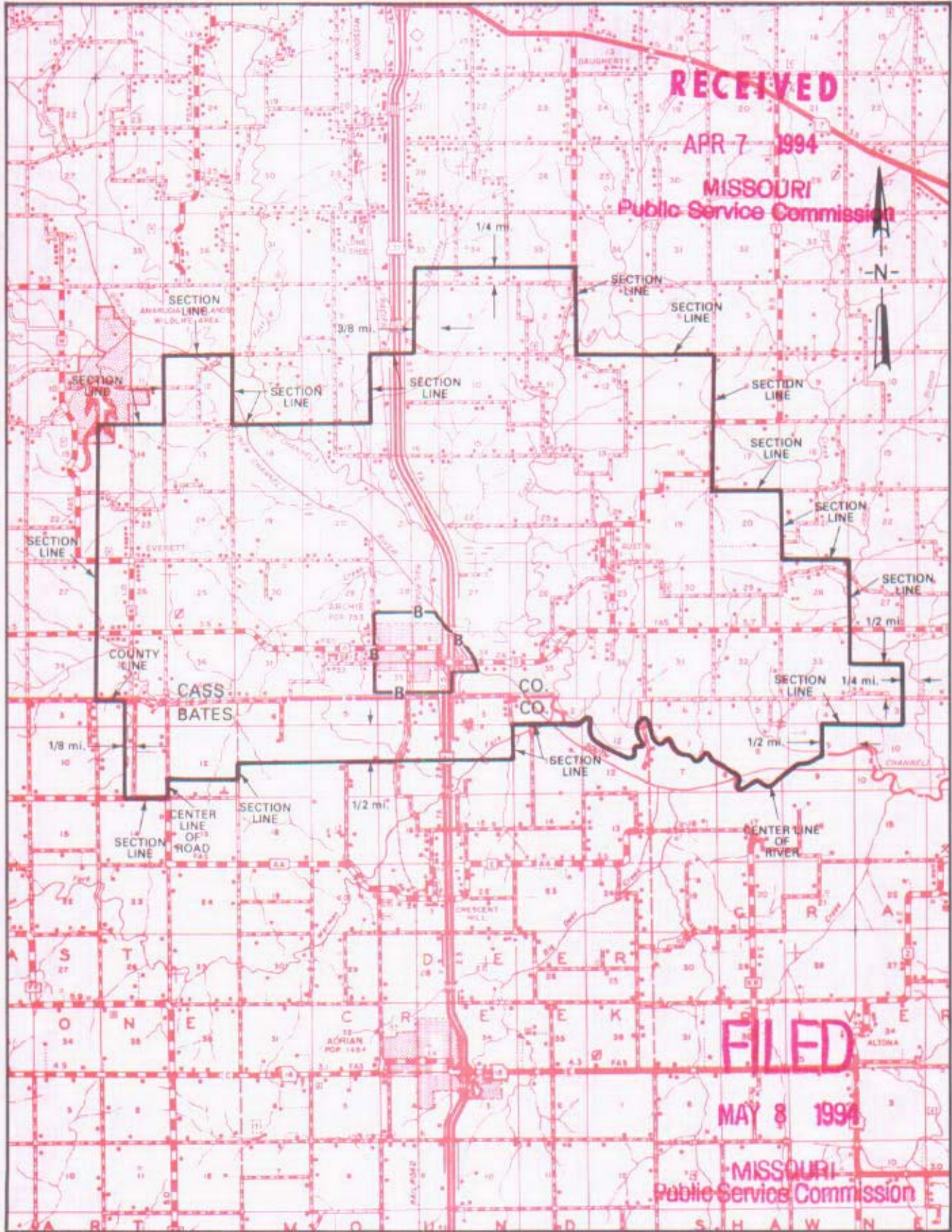
NO SUPPLEMENT TO THIS TARIFF WILL BE ISSUED EXCEPT FOR THE PURPOSE OF CANCELING THIS TARIFF.

P. S. C. Mo. No. 17

Archie, Missouri

8th REVISED SHEET 3
REPLACING 7th REVISED SHEET 3

EXCHANGE AREA MAP



R32W | R31W

R31W | R30W

By M. H. SCHULTEIS, Executive Director - External Affairs
Southwestern Bell Telephone Company
St. Louis, Missouri

Issued: April 8, 1994

Effective: May 8, 1994

CANCELLED
June 29, 2007
TO-2002-185
Missouri Public
Service Commission

SBC PSC MO #17
Argyle, Missouri
Original Sheet 2
Replacing Ozark Central
Telephone Company
P.S.C. Mo. No. 1
Original Sheet 2

Non-Scannable Map

(Is viewable in the Data Center
200 Madison Street, 1st Floor
Jefferson City MO)

NO SUPPLEMENT TO THIS TARIFF WILL BE ISSUED EXCEPT FOR THE PURPOSE OF CANCELING THIS TARIFF.

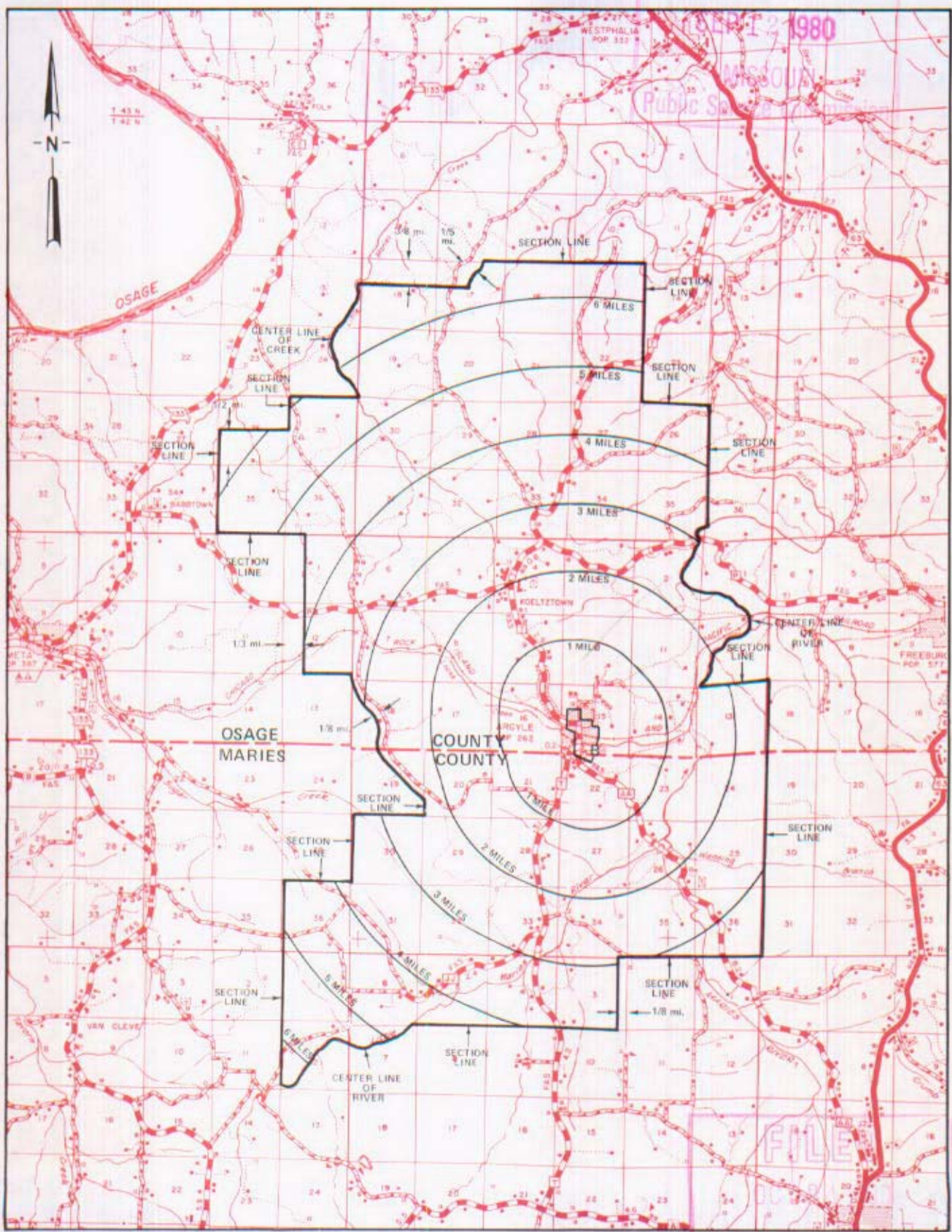
P. S. C. Mo. No. 17

Argyle, Missouri

EXCHANGE AREA MAP

REPLACING 5th REVISED SHEET 3
4th REVISED SHEET 3

RECEIVED
 SEP 12 1980
 Missouri
 Public Service Commission
 FILE



T43N
T42N

T42N
T41N

T41N
T40N

R11W | R10W

By R. R. SHOCKLEY, Vice President, Missouri
Southwestern Bell Telephone Company

R10W | R9W

Public Service Commission

Issued: SEPT 23, 1980

Effective: OCT 24, 1980

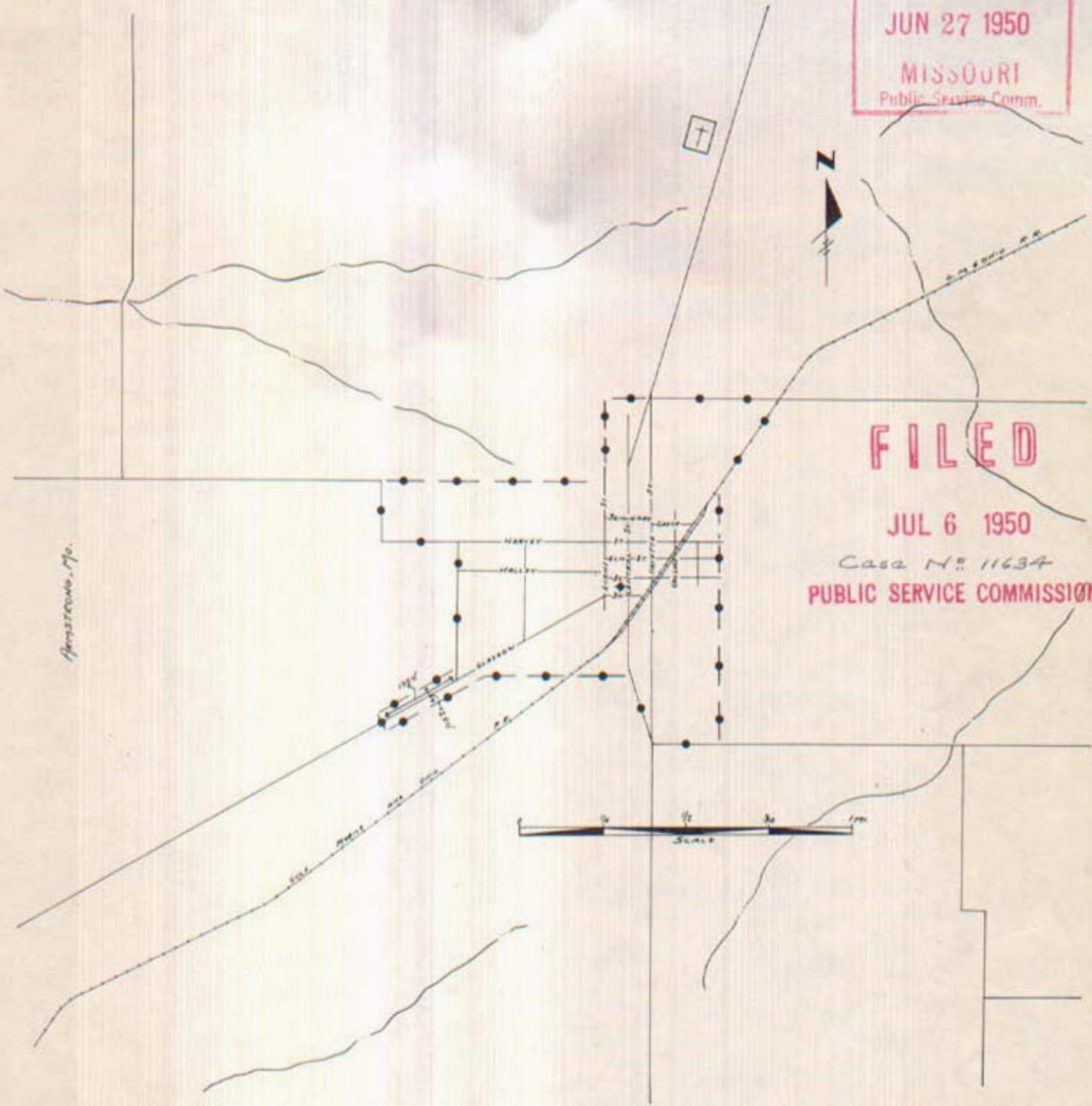
CANCELLED
June 29, 2007
TO-2002-185
Missouri Public
Service Commission

NO SUPPLEMENT TO THIS TARIFF WILL BE ISSUED EXCEPT FOR THE PURPOSE OF CANCELING THIS TARIFF.



Armstrong, Missouri
ORIGINAL SHEET 2
REPLACING ORIGINAL SHEET 1-A

P. S. C.-Mo. No. 17
BASE RATE AREA MAP

RECEIVED
JUN 27 1950
MISSOURI
Public Service Comm.



FILED
JUL 6 1950
Case No. 11634
PUBLIC SERVICE COMMISSION

CODE
BELL CENTRAL OFFICE: 
BASE RATE AREA LIMITS: 

Issued: June 27, 1950

Effective: July 6, 1950

By H. R. TOWLES, General Manager
Southwestern Bell Telephone Company
St. Louis, Missouri

CANCELLED
June 29, 2007
TO-2002-185
Missouri Public
Service Commission

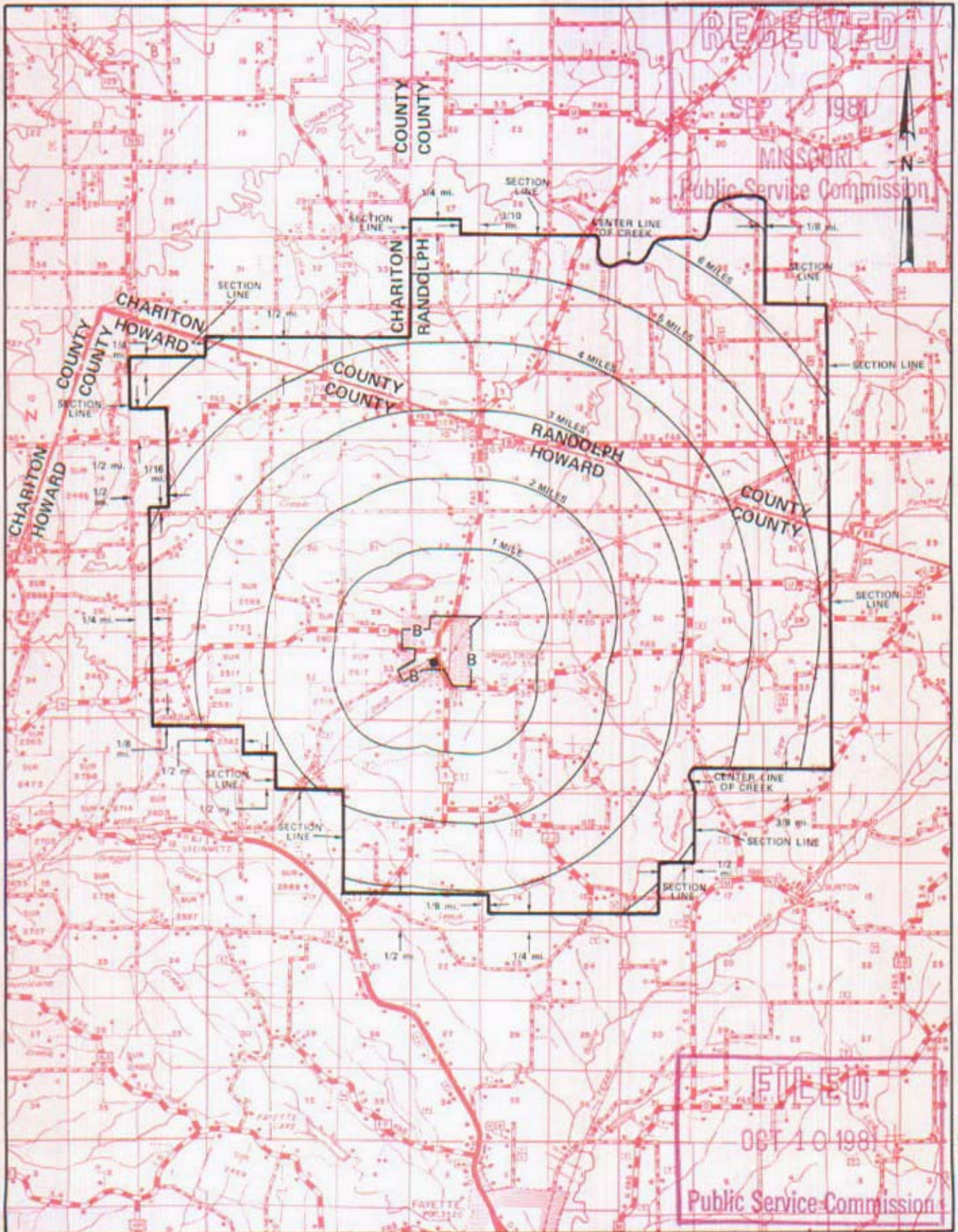
NO SUPPLEMENT TO THIS TARIFF WILL BE ISSUED EXCEPT FOR THE PURPOSE OF CANCELING THIS TARIFF.

P. S. C. Mo. No. 17

Armstrong, Missouri

EXCHANGE AREA MAP

8th REVISED SHEET 3
REPLACING 7th REVISED SHEET 3



T54N
T53N

T53N
T52N

T52N
T51N

R17W | R16W

R16W | R15W

By R. R. SHOCKLEY, Vice President, Missouri
Southwestern Bell Telephone Company

CANCELLED
June 29, 2007
TO-2002-185
Missouri Public
Service Commission

SEPT 10 1981

OCT 10 1981

SBC PSC MO #17
Ash Grove, Missouri
Original Sheet 2
Replacing Western Light
& Telephone Company's
P.S.C. Mo. No. 6
Initial Rate Area Map
Greene County

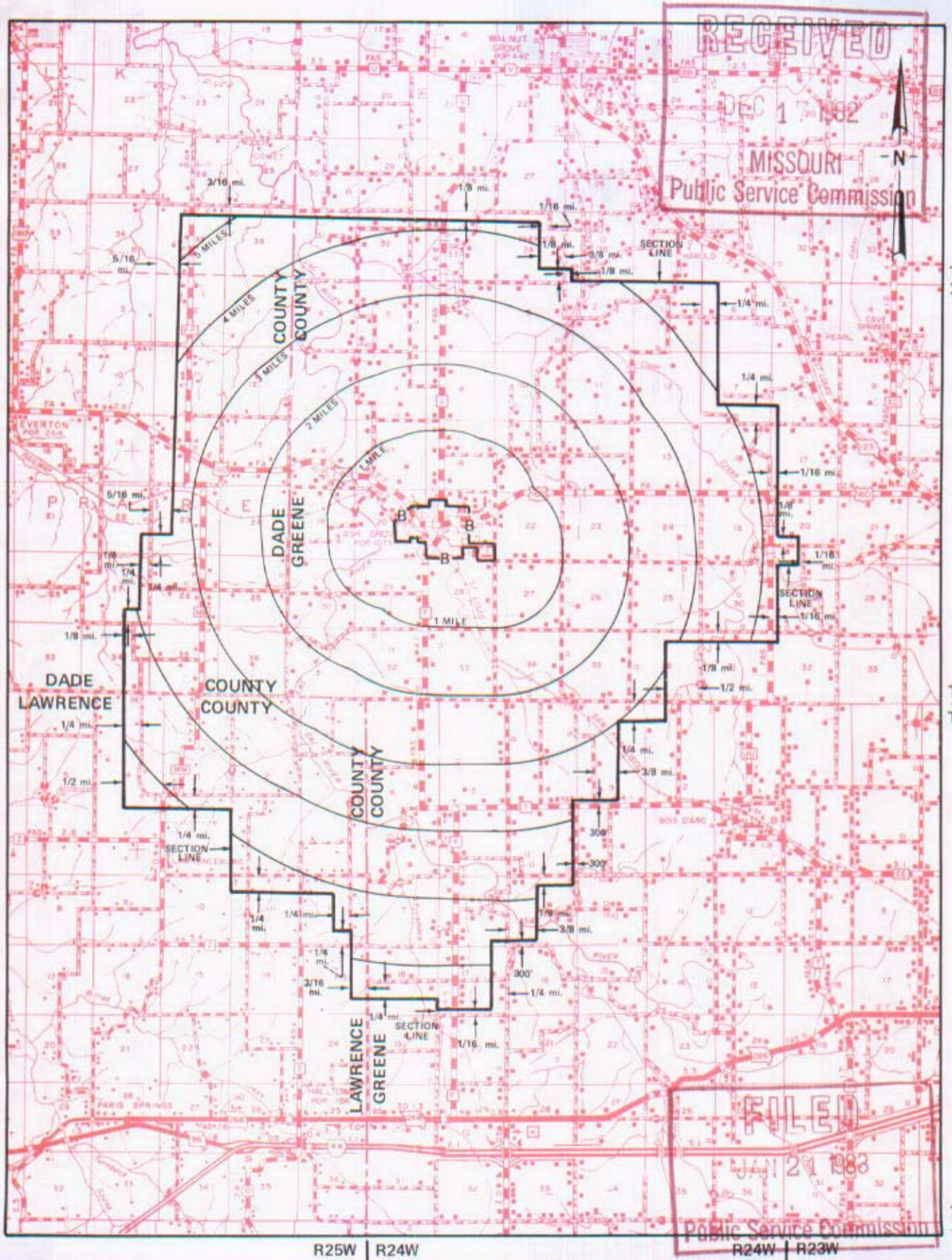
Non-Scannable Map

(Is viewable in the Data Center
200 Madison Street, 1st Floor
Jefferson City MO)

NO SUPPLEMENT TO THIS TARIFF WILL BE ISSUED EXCEPT FOR THE PURPOSE OF CANCELING THIS TARIFF.

P. S. C. Mo. No. 17 EXCHANGE AREA MAP

Ash Grove, Missouri
8th REVISED SHEET 3
REPLACING 7th REVISED SHEET 3



T31N
T30N

T30N
T29N

T29N
T28N

R25W | R24W

R24W | R23W

By R. D. BARRON, Vice President, Missouri
Southwestern Bell Telephone Company

St. Louis, Missouri

Issued: DECEMBER 20, 1982

Effective: JANUARY 21, 1983

CANCELLED
June 29, 2007
TO-2002-185
Missouri Public
Service Commission

No Supplement to this tariff will be issued except for the purpose of canceling this tariff.

Missouri Portion-
Atchison, Kansas Exchange
33rd Revised Sheet 1
Replacing 32nd Revised Sheet 1

LOCAL EXCHANGE TARIFF

I. GENERAL

This Tariff is governed, except as otherwise specified herein, by all other Tariffs of the Southwestern Bell Telephone Company on file in the State of Missouri, which are hereby made a part of this Tariff. Unless otherwise specified, the charges quoted in this Tariff or in any other Missouri Tariff are for periods of one month, are payable monthly in advance and entitle the customer to exchange telephone service within the Atchison Exchange Area. This Exchange Area includes, in addition to the Missouri Portion, certain territory in the State of Kansas comprising the City of Atchison and vicinity, as shown on the Exchange Area Map for this exchange.

II. RATES

- A. The rates for main service do not include a Telephone Company-provided instrument, except for Semi-Public Service, which includes one station equipped with a coin-collecting device.
- B. Within the Missouri portion of the exchange, rates will be frozen until March 1, 1995. Urban mileage charges as set forth in Paragraph C. and D. following, apply as applicable, in addition to exchange rates when service is provided outside the Base Rate Area. Exchange rates are as follows:

		<u>Current Rates(1)</u>	
		<u>Business</u>	<u>Residence</u>
1.	Flat Rate Service		
	One-Party	\$17.56(CR)	\$ 9.51(CR)
	Lifeline	N/A	(2)
	One-Party Multiline	20.60	N/A
	PBX Trunk	29.20	14.70
		<u>Local Message</u>	<u>Additional Local</u>
2.	Message Rate Service	<u>Allowance</u>	<u>Allowance</u>
	Business One-Party	\$12.78(CR)	85
			\$.06

- (1) See Sheet 2 for maximum allowable rates.
- (2) A customer eligible under established criteria can receive a discount from his or her bill for residential essential local telecommunications services, in accordance with P.S.C. Mo. – No. 24, Local Exchange Tariff, Section 1.2.2.E, regarding Lifeline Service.

Issued: October 17, 2005

Effective: December 1, 2005

By CINDY BRINKLEY, President-SBC Missouri
Southwestern Bell Telephone, L.P., d/b/a SBC Missouri
St. Louis, Missouri

FILED
Missouri Public
Service Commission

No Supplement to this tariff will be issued except for the purpose of canceling this tariff.

Missouri Portion-
Atchison, Kansas Exchange
32nd Revised Sheet 1
Replacing 31st Revised Sheet 1

(RT)

LOCAL EXCHANGE TARIFF

I. GENERAL

This Tariff is governed, except as otherwise specified herein, by all other Tariffs of the Southwestern Bell Telephone Company on file in the State of Missouri, which are hereby made a part of this Tariff. Unless otherwise specified, the charges quoted in this Tariff or in any other Missouri Tariff are for periods of one month, are payable monthly in advance and entitle the customer to exchange telephone service within the Atchison Exchange Area. This Exchange Area includes, in addition to the Missouri Portion, certain territory in the State of Kansas comprising the City of Atchison and vicinity, as shown on the Exchange Area Map for this exchange.

II. RATES

- A. The rates for main service do not include a Telephone Company-provided instrument, except for Semi-Public Service, which includes one station equipped with a coin-collecting device.
- B. Within the Missouri portion of the exchange, rates will be frozen until March 1, 1995. Urban mileage charges as set forth in Paragraph C. and D. following, apply as applicable, in addition to exchange rates when service is provided outside the Base Rate Area. Exchange rates are as follows:

		<u>Current Rates(1)</u>	
		<u>Business</u>	<u>Residence</u>
(CT)(CR)	1. Flat Rate Service		
	One-Party	\$17.91	\$ 9.70
	Lifeline	N/A	(2)
	One-Party Multiline PBX Trunk	20.60 29.20	N/A 14.70
		<u>Local Message Allowance</u>	<u>Additional Local Allowance</u>
	2. Message Rate Service	<u>Rate</u>	
	Business One-Party	\$13.03	85 \$.06

- (1) See Sheet 2 for maximum allowable rates.
- (AT) (2) A customer eligible under established criteria can receive a discount from his or her bill for residential essential local telecommunications services, in accordance with P.S.C. Mo. - No. 24, Local Exchange Tariff, Section 1.2.2.E, regarding Lifeline Service.

Issued: April 1, 2005

Effective: May 1, 2005

CANCELLED

By CINDY BRINKLEY, President-SBC Missouri
Southwestern Bell Telephone, L.P., d/b/a SBC Missouri
St. Louis, Missouri

DEC 01 2005
By 33rd RS 1
Public Service Commission
MISSOURI

TO-1998-0329

**FILED
MO PSC**

No Supplement to this tariff will be issued except for the purpose of canceling this tariff.

Missouri Portion-
Atchison, Kansas, Exchange
31st Revised Sheet 1
Replacing 30th Revised Sheet 1

SOUTHWESTERN BELL TELEPHONE COMPANY
LOCAL EXCHANGE TARIFF

I. GENERAL

This Tariff is governed, except as otherwise specified herein, by all other Tariffs of the Southwestern Bell Telephone Company on file in the State of Missouri, which are hereby made a part of this Tariff. Unless otherwise specified, the charges quoted in this Tariff or in any other Missouri Tariff are for periods of one month, are payable monthly in advance and entitle the customer to exchange telephone service within the Atchison Exchange Area. This Exchange Area includes, in addition to the Missouri Portion, certain territory in the State of Kansas comprising the City of Atchison and vicinity, as shown on the Exchange Area Map for this exchange.

II. RATES

- A. The rates for main service do not include a Telephone Company-provided instrument, except for Semi-Public Service, which includes one station equipped with a coin-collecting device.
- B. Within the Missouri portion of the exchange, rates will be frozen until March 1, 1995. Urban mileage charges as set forth in Paragraph C. and D. following, apply as applicable, in addition to exchange rates when service is provided outside the Base Rate Area. Exchange rates are as follows:

		Current Rates(1)	
		Business	Residence
1. Flat Rate Service	<p>CANCELLED</p> <p>MAY 01 2005</p> <p>32nd RS 1</p> <p>Public Service Commission</p> <p>MISSOURI</p>		
One-Party Lifeline(2)		\$17.91(CR)	\$ 9.70(CR)
One-Party Multiline		N/A	6.20(CR)
PBX Trunk		20.60	N/A
		29.20	14.70
2. Message Rate Service	Rate	Local Message Allowance	Additional Local Allowance
Business One-Party	\$13.03(CR)	85	\$.06

- (1) See Sheet 2 for maximum allowable rates.
- (2) See P.S.C. Mo. – No. 24, Local Exchange Tariff, Section 1.2.2.E, for description, terms and conditions related to Lifeline Service.

Issued: October 15, 2004

Effective: December 1, 2004

By CINDY BRINKLEY, President-SBC Missouri
Southwestern Bell Telephone, L.P., d/b/a SBC Missouri
St. Louis, Missouri

FILED
MO PSC

(C) No Supplement to this tariff will be issued except for the purpose of canceling this tariff.

Missouri Portion-
Atchison, Kansas, Exchange
30th Revised Sheet 1
Replacing 29th Revised Sheet 1
Missouri Public

SOUTHWESTERN BELL TELEPHONE COMPANY Service Commission
LOCAL EXCHANGE TARIFF

REC'D MAY 10 2004

I. GENERAL

This Tariff is governed, except as otherwise specified herein, by all other Tariffs of the Southwestern Bell Telephone Company on file in the State of Missouri, which are hereby made a part of this Tariff. Unless otherwise specified, the charges quoted in this Tariff or in any other Missouri Tariff are for periods of one month, are payable monthly in advance and entitle the customer to exchange telephone service within the Atchison Exchange Area. This Exchange Area includes, in addition to the Missouri Portion, certain territory in the State of Kansas comprising the City of Atchison and vicinity, as shown on the Exchange Area Map for this exchange.

II. RATES

- A. The rates for main service do not include a Telephone Company-provided instrument, except for Semi-Public Service, which includes one station equipped with a coin-collecting device.
- B. Within the Missouri portion of the exchange, rates will be frozen until March 1, 1995. Urban mileage charges as set forth in Paragraph C. and D. following, apply as applicable, in addition to exchange rates when service is provided outside the Base Rate Area. Exchange rates are as follows:

		Current Rates(1)	
		<u>Business</u>	<u>Residence</u>
(AT)	1. Flat Rate Service		
	One-Party Lifeline(2)	\$18.40	\$ 9.97
	One-Party Multiline	N/A	6.47(NR)
	PBX Trunk	20.60	N/A
		29.20	14.70
	2. Message Rate Service	<u>Local Message Allowance</u>	<u>Additional Local Allowance</u>
	Business One-Party	Rate \$13.39	85 \$.06

CANCELLED
DEC 01 2004
316 RSI
Public Service Commission
MISSOURI

- (1) See Sheet 2 for maximum allowable rates.
- (AT) (2) See P.S.C. Mo. – No. 24, Local Exchange Tariff, Section 1.2.2.E, for description, terms and conditions related to Lifeline Service.

Issued: May 10, 2004

Effective: June 9, 2004

By CINDY BRINKLEY, President-SBC Missouri
Southwestern Bell Telephone, L.P., d/b/a SBC Missouri
St. Louis, Missouri

Missouri Public
Service Commission

FILED JUN 09 2004

No Supplement to this tariff will be issued except for the purpose of canceling this tariff.

Missouri Portion-
Atchinson, Kansas, Exchange
29th Revised Sheet 1
Replacing 28th Revised Sheet 1
Missouri Public

SOUTHWESTERN BELL TELEPHONE COMPANY
LOCAL EXCHANGE TARIFF

REC'D OCT 15 2003

I. GENERAL

This Tariff is governed, except as otherwise specified herein, by all other Tariffs of the *Service Commission* Southwestern Bell Telephone Company on file in the State of Missouri, which are hereby made a part of this Tariff. Unless otherwise specified, the charges quoted in this Tariff or in any other Missouri Tariff are for periods of one month, are payable monthly in advance and entitle the customer to exchange telephone service within the Atchison Exchange Area. This Exchange Area includes, in addition to the Missouri Portion, certain territory in the State of Kansas comprising the City of Atchison and vicinity, as shown on the Exchange Area Map for this exchange.

II. RATES

- A. The rates for main service do not include a Telephone Company-provided instrument, except for Semi-Public Service, which includes one station equipped with a coin-collecting device.
- B. Within the Missouri portion of the exchange, rates will be frozen until March 1, 1995. Urban mileage charges as set forth in Paragraph C. and D. following, apply as applicable, in addition to exchange rates when service is provided outside the Base Rate Area. Exchange rates are as follows:

		<u>Current Rates(1)</u>	
		<u>Business</u>	<u>Residence</u>
1.	Flat Rate Service		
	One-Party	\$18.40(CR)	\$ 9.97
	One-Party Multiline	20.60	N/A
	PBX Trunk	29.20	14.70
(CT)			
2.	Message Rate Service	<u>Rate</u>	<u>Local Message Allowance</u>
	Business One-Party	\$13.39(CR)	85
			<u>Additional Local Allowance</u>
			\$0.06

(1) See Sheet 2 for maximum allowable rates.

Issued: October 15, 2003

Effective: December 1, 2003

By CINDY BRINKLEY, President-SBC Missouri
Southwestern Bell Telephone, L.P., d/b/a SBC Missouri
St. Louis, Missouri

CANCELLED
JUN 09 2004
L. BOHRER
Public Service Commission
MISSOURI

Missouri Public
Service Commission

FILED DEC 01 2003

No Supplement to this tariff will be issued except for the purpose of canceling this tariff.

Missouri Portion-
Atchison, Kansas, Exchange
28th Revised Sheet 1
Replacing 27th Revised Sheet 1

SOUTHWESTERN BELL TELEPHONE COMPANY
LOCAL EXCHANGE TARIFF

Missouri Public
Service Commission

REC'D OCT 15 2002

I. GENERAL

This Tariff is governed, except as otherwise specified herein, by all other Tariffs of the Southwestern Bell Telephone Company on file in the State of Missouri, which are hereby made a part of this Tariff. Unless otherwise specified, the charges quoted in this Tariff or in any other Missouri Tariff are for periods of one month, are payable monthly in advance and entitle the customer to exchange telephone service within the Atchison Exchange Area. This Exchange Area includes, in addition to the Missouri Portion, certain territory in the State of Kansas comprising the City of Atchison and vicinity, as shown on the Exchange Area Map for this exchange.

II. RATES

- A. The rates for main service do not include a Telephone Company-provided instrument, except for Semi-Public Service, which includes one station equipped with a coin-collecting device.
- B. Within the Missouri portion of the exchange, rates will be frozen until March 1, 1995. Urban mileage charges as set forth in Paragraph C. and D. following, apply as applicable, in addition to exchange rates when service is provided outside the Base Rate Area. Exchange rates are as follows:

		Current Rates(1)	
		<u>Business</u>	<u>Residence</u>
1. Flat Rate Service	CANCELLED		
One-Party	DEC 01 2003	\$18.41(CR)	\$9.97(CR)
One-Party Multiline	by 29th RS 1	20.60	N/A
PBX Trunk	Public Service Commission MISSOURI	29.20	14.70
2. Message Rate Service	<u>Rate</u>	<u>Local Message Allowance</u>	<u>Add'l Local Allowance</u>
Business One-Party	\$13.40(CR)	85	\$.06

Missouri Public
Service Commission

(1) See Sheet 2 for maximum allowable rates.

FILED DEC 01 2002

Issued: October 15, 2002

Effective: December 1, 2002

By CINDY BRINKLEY, President-Missouri
Southwestern Bell Telephone, L.P., d/b/a Southwestern Bell Telephone Company
St. Louis, Missouri

No supplement to this tariff will be issued except for the purpose of canceling this tariff.

MISSOURI PORTION-ATCHISON, KANSAS, EXCHANGE
 27th Revised Sheet 1
 Replacing 26th Revised Sheet 1

SOUTHWESTERN BELL TELEPHONE COMPANY
 LOCAL EXCHANGE TARIFF

Missouri Public
 REC'D OCT 01 2001

I. GENERAL

This Tariff is governed, except as otherwise specified herein, by all other Tariffs of the Southwestern Bell Telephone Company on file in the State of Missouri, which are hereby made a part of this Tariff. Unless otherwise specified, the charges quoted in this Tariff or in any other Missouri Tariff are for periods of one month, are payable monthly in advance and entitle the customer to exchange telephone service within the Atchison Exchange Area. This Exchange Area includes, in addition to the Missouri Portion, certain territory in the State of Kansas comprising the City of Atchison and vicinity, as shown on the Exchange Area Map for this exchange.

Service Commission

II. RATES

A. The rates for main service do not include a Telephone Company-provided instrument, except for Semi-Public Service, which includes one station equipped with a coin-collecting device.

B. Within the Missouri portion of the exchange, rates will be frozen until March 1, 1995. Urban mileage charges as set forth in Paragraph C. and D. following, apply as applicable, in addition to exchange rates when service is provided outside the Base Rate Area. Exchange rates are as follows:

CANCELLED

Current rates (1)

1. Flat Rate Service		<u>Business</u>	<u>Residence</u>
One-Party		\$18.24 (CR)	\$9.89(CR)
One-Party Multi		20.60	N/A
PBX Trunk		29.20	14.70
2. Message Rate Service		<u>Local Message Allowance</u>	<u>Add'l. Local Allowance</u>
	<u>Rate</u>		
Business One-Party	\$13.28(CR)	85	\$.06

DEC 01 2002
 28 WRSI
 Missouri Public Service Commission
 MISSOURI

(1) See Sheet 2 for maximum allowable rates.

Issued: October 1, 2001

Effective: December 1, 2001

By JAN NEWTON, President-Missouri
 Southwestern Bell Telephone Company
 St. Louis, Missouri

Missouri Public
 FILED DEC 01 2001

Service Commission

No supplement to this tariff will be issued except for the purpose of canceling this tariff.

MISSOURI PORTION-ATCHISON, KANSAS, EXCHANGE
 26th Revised Sheet 1
 Replacing 25th Revised Sheet 1

SOUTHWESTERN BELL TELEPHONE COMPANY **Missouri Public Service Commission**
 LOCAL EXCHANGE TARIFF

REC'D OCT 02 2000

I. GENERAL

This Tariff is governed, except as otherwise specified herein, by all other Tariffs of the Southwestern Bell Telephone Company on file in the State of Missouri, which are hereby made a part of this Tariff. Unless otherwise specified, the charges quoted in this Tariff or in any other Missouri Tariff are for periods of one month, are payable monthly in advance and entitle the customer to exchange telephone service within the Atchison Exchange Area. This Exchange Area includes, in addition to the Missouri Portion, certain territory in the State of Kansas comprising the City of Atchison and vicinity, as shown on the Exchange Area Map for this exchange.

II. RATES

A. The rates for main service do not include a Telephone Company-provided instrument, except for Semi-Public Service, which includes one station equipped with a coin-collecting device.

B. Within the Missouri portion of the exchange, rates will be frozen until March 1, 1995. Urban mileage charges as set forth in Paragraph C. and D. following, apply as applicable, in addition to exchange rates when service is provided outside the Base Rate Area. Exchange rates are as follows:

CANCELLED

Current rates (1)

1. Flat Rate Service		<u>Business</u>	<u>Residence</u>
One-Party		\$18.38(CR)	\$9.96(CR)
One-Party Multiline		20.60	N/A
PBX Trunk		29.20	14.70
2. Message Rate Service		<u>Local Message Allowance</u>	<u>Add'l. Local Allowance</u>
Business One-Party	<u>Rate</u>	85	\$.06
	\$13.38(CR)		

DEC 01 2001
27 MRS 1
Public Service Commission
MISSOURI

Missouri Public Service Commission

(RT)

(AT) (1) See Sheet 2 for maximum allowable rates.

FILED DEC 01 2000

Issued: October 2, 2000

Effective: December 1, 2000

By JAN NEWTON, President-Missouri
 Southwestern Bell Telephone Company
 St. Louis, Missouri

No supplement to this tariff will be issued except for the purpose of canceling this tariff.

MISSOURI PORTION-ATCHISON, KANSAS, EXCHANGE
25th Revised Sheet 1
Replacing 24th Revised Sheet 1

RECEIVED

SOUTHWESTERN BELL TELEPHONE COMPANY
LOCAL EXCHANGE TARIFF

DEC 4 1992

I. GENERAL

MO. PUBLIC SERVICE COMM.

This Tariff is governed, except as otherwise specified herein, by all other Tariffs of the Southwestern Bell Telephone Company on file in the State of Missouri, which are hereby made a part of this Tariff. Unless otherwise specified, the charges quoted in this Tariff or in any other Missouri Tariff are for periods of one month, are payable monthly in advance and entitle the customer to exchange telephone service within the Atchison Exchange Area. This Exchange Area includes, in addition to the Missouri Portion, certain territory in the State of Kansas comprising the City of Atchison and vicinity, as shown on the Exchange Area Map for this exchange.

II. RATES

A. The rates for main service do not include a Telephone Company-provided instrument, except for Semi-Public Service, which includes one station equipped with a coin-collecting device.

(CP) B. Within the Missouri portion of the exchange, rates will be frozen until March 1, 1995. Urban mileage charges as set forth in Paragraph C. and D. following, apply as applicable, in addition to exchange rates when service is provided outside the Base Rate Area. Exchange rates are as follows:

		<u>Business</u>	<u>Residence</u>
1. Flat Rate Service			
(RT) One-Party		\$18.55 (DR)	\$10.05 (DR)
(RT) Semi-Public		7.98 (DR)	N/A (DR)
One-Party Multiline		20.60	N/A
PBX Trunk		29.20	14.70

2. Message Rate Service	<u>Rate</u>	<u>Local Message Allowance</u>	<u>Add'l Local Message</u>
Business One-Party	\$13.50	85	\$.06

CANCELLED

(RT) (DR) (DR) (DR) (DR)

DEC 01 2000

By *26th RSI*
Public Service Commission (DR) (DR) (DR) (DR)
MISSOURI

Issued: DEC 07 1992

Effective: ~~JAN 01 1993~~ JAN 21 1993 FILED

By A. D. ROBERTSON, Assistant Vice President-External Affairs, JAN 21 1993
Southwestern Bell Telephone Company
St. Louis, Missouri

MO. PUBLIC SERVICE COMM.

No Supplement to this
tariff will be issued
except for the purpose
of canceling this tariff.

(RT)

LOCAL EXCHANGE TARIFF

II. RATES (cont'd)

- C. The following urban mileage charge applies to those customers provided exchange service located outside the base rate area:

	Current Rates(1)	
	<u>USOC</u>	<u>Monthly Rate</u>
Urban Mileage Charge, per line	1LS1H	\$4.36(CR)

- D. The following urban mileage charge applies to former two-party customers who were located two miles beyond the Suburban Service Area boundary prior to the conversion of the exchange to one-party service. The charge applies to “existing installations, at existing locations, for existing customer”.

	<u>USOC</u>	<u>Monthly Rate</u>
Urban Mileage Charge, per line	XUDV3	\$3.26(CR)

(1) See Sheet 2 for maximum allowable rates.

Issued: October 17, 2005

Effective: December 1, 2005

By CINDY BRINKLEY, President-Missouri
Southwestern Bell Telephone, L.P., d/b/a Southwestern Bell Telephone Company
St. Louis, Missouri

No Supplement to this tariff will be issued except for the purpose of canceling this tariff.

Missouri Portion-
Atchison, Kansas, Exchange
9th Revised Sheet 1.01
Replacing 8th Revised Sheet 1.01

SOUTHWESTERN BELL TELEPHONE COMPANY
LOCAL EXCHANGE TARIFF

II. RATES (cont'd)

- C. The following urban mileage charge applies to those customers provided exchange service located outside the base rate area:

	Current Rates(1)	
	<u>USOC</u>	<u>Monthly Rate</u>
Urban Mileage Charge, per line	1LS1H	\$4.45(CR)

- D. The following urban mileage charge applies to former two-party customers who were located two miles beyond the Suburban Service Area boundary prior to the conversion of the exchange to one-party service. The charge applies to "existing installations, at existing locations, for existing customer".

	<u>USOC</u>	<u>Monthly Rate</u>
	Urban Mileage Charge, per line	XUDV3

CANCELLED
DEC 01 2005
By 1047 RS 1.01
Public Service Commission
MISSOURI

(1) See Sheet 2 for maximum allowable rates.

Issued: October 15, 2004

Effective: December 1, 2004

By CINDY BRINKLEY, President-Missouri
Southwestern Bell Telephone, L.P., d/b/a Southwestern Bell Telephone Company
St. Louis, Missouri

FILED
MO PSC

No Supplement to this tariff will be issued except for the purpose of canceling this tariff.

Missouri Portion-
Atchison, Kansas, Exchange
8th Revised Sheet 1.01
Replacing 7th Revised Sheet 1.01

SOUTHWESTERN BELL TELEPHONE COMPANY
LOCAL EXCHANGE TARIFF

Missouri Public
Service Commission

II. RATES (cont'd)

REC'D OCT 15 2002

- C. The following urban mileage charge applies to those customers provided exchange service located outside the base rate area:

	Current Rates(1)	
	<u>USOC</u>	<u>Monthly Rate</u>
Urban Mileage Charge, per line	1LS1H	\$4.57(CR)

- D. The following urban mileage charge applies to former two-party customers who were located two miles beyond the Suburban Service Area boundary prior to the conversion of the exchange to one-party service. The charge applies to "existing installations, at existing locations, for existing customer".

	<u>USOC</u>	<u>Monthly Rate</u>
Urban Mileage Charge, per line	XUDV3	\$3.42(CR)

CANCELLED

DEC 01 2004
944RS 1.01
Public Service Commission
MISSOURI

Missouri Public
Service Commission

(1) See Sheet 2 for maximum allowable rates.

FILED DEC 01 2002

Issued: October 15, 2002

Effective: December 1, 2002

By CINDY BRINKLEY, President-Missouri
Southwestern Bell Telephone, L.P., d/b/a Southwestern Bell Telephone Company
St. Louis, Missouri

No supplement to this tariff will be issued except for the purpose of canceling this tariff.

MISSOURI PORTION-ATCHISON, KANSAS, EXCHANGE
7th Revised Sheet 1.01

Replacing 6th Revised Sheet 1.01

Missouri Public

SOUTHWESTERN BELL TELEPHONE COMPANY
LOCAL EXCHANGE TARIFF

REC'D OCT 01 2001

II. RATES-(Continued)

Service Commission

C. The following urban mileage charge applies to those customers provided exchange service located outside the base rate area:

	<u>Current rates (1)</u>	
	<u>USOC</u>	<u>Monthly Rate</u>
Urban Mileage Charge, per line	ILSIH	\$4.53(CR)

D. The following urban mileage charge applies to former two-party customers who were located two miles beyond the Suburban Service Area boundary prior to the conversion of the exchange to one-party service. The charge applies to "existing installations, at existing locations, for existing customer":

	<u>USOC</u>	<u>Monthly Rate</u>
Urban Mileage Charge, per line	XUDV3	\$3.39(CR)

CANCELLED

DEC 01 2002

SHRS 1.01

Public Service Commission
MISSOURI

(1) See Sheet 2 for maximum allowable rates.

Issued: October 1, 2001

Effective: December 1, 2001

By JAN NEWTON, President-Missouri
Southwestern Bell Telephone Company
St. Louis, Missouri

Missouri Public

FILED DEC 01 2001

Service Commission

No supplement to this tariff will be issued except for the purpose of canceling this tariff.

MISSOURI PORTION-ATCHISON, KANSAS, EXCHANGE
6th Revised Sheet 1.01
Replacing 5th Revised Sheet 1.01

SOUTHWESTERN BELL TELEPHONE COMPANY
LOCAL EXCHANGE TARIFF

Missouri Public
Service Commission

II. RATES-(Continued)

REC'D OCT 02 2000

C. The following urban mileage charge applies to those customers provided exchange service located outside the base rate area:

(AT)

	<u>CURRENT RATES (1)</u>	
	<u>USOC</u>	<u>Monthly Rate</u>
Urban Mileage Charge, per line	ILSIH	\$4.56(CR)

D. The following urban mileage charge applies to former two-party customers who were located two miles beyond the Suburban Service Area boundary prior to the conversion of the exchange to one-party service. The charge applies to "existing installations, at existing locations, for existing customer":

	<u>USOC</u>	<u>Monthly Rate</u>
Urban Mileage Charge, per line	XUDV3	\$3.42(CR)

CANCELLED

DEC 01 2001
174RS1.01
Public Service Commission
MISSOURI

Missouri Public
Service Commission

FILED DEC 01 2000

(AT)

(1) See Sheet 2 for maximum allowable rates.

Issued: October 2, 2000

Effective: December 1, 2000

By JAN NEWTON, President-Missouri
Southwestern Bell Telephone Company
St. Louis, Missouri

No supplement to this tariff will be issued except for the purpose of canceling this tariff.

MISSOURI PORTION-ATCHISON, KANSAS, EXCHANGE
5th Revised Sheet 1.01
Replacing 4th Revised Sheet 1.01

SOUTHWESTERN BELL TELEPHONE COMPANY
LOCAL EXCHANGE TARIFF

RECEIVED
DEC 4 1992

II. RATES--(Continued)

(RT) Footnotes:--(Continued)

MO. PUBLIC SERVICE COMM.

(RT)

(AT) C. The following urban mileage charge applies to those customers provided exchange service located outside the base rate area:

	<u>USOC</u>		<u>Monthly Rate</u>
Urban Mileage Charge, per line	1LS1H	(NR)	\$4.60

D. The following urban mileage charge applies to former two-party customers who were located two miles beyond the Suburban Service Area boundary prior to the conversion of the exchange to one-party service. The charge applies to "existing installations, at existing locations, for existing customers":

	<u>USOC</u>		<u>Monthly Rate</u>
(AT) Urban Mileage Charge, per line	XUDV3	(NR)	\$3.45

CANCELLED

FILED

DEC 01 2000
By *lth RSI*
Public Service Commission
MISSOURI

JAN 21 1993
MO. PUBLIC SERVICE COMM.

JAN 21 1993

Issued: DEC 07 1992

Effective: ~~JAN 07 1993~~
JAN 21 1993

By A. D. ROBERTSON, Assistant Vice President-External Affairs
Southwestern Bell Telephone Company
St. Louis, Missouri

**P.S.C. Mo. - No. 17
Missouri Portion-**

Southwestern Bell Telephone, L.P.
d/b/a AT&T Missouri

Atchison, Kansas Exchange
8th Revised Sheet 2
Replacing 7th Revised Sheet 2

LOCAL EXCHANGE TARIFF

II. RATES (cont'd)

		<u>Maximum Rates</u>	
		<u>Business</u>	<u>Residence</u>
1.	Flat Rate Service		
	One-Party Lifeline	\$17.60(CR) N/A	\$9.53(CR) (1)
		<u>USOC</u>	<u>Monthly Rate</u>
	Urban Mileage Charge, per line	1LS1H	\$4.36
		<u>USOC</u>	<u>Monthly Rate</u>
	Urban Mileage Charge, per line	XUDV3	\$3.26
2.	Message Rate Service	<u>Rate</u>	<u>Local Message Allowance</u>
	Business One-Party	\$12.78	85
			<u>Additional Local Allowance</u>
			\$.06

(1) A customer eligible under established criteria can receive a discount from his or her bill for residential essential local telecommunications services, in accordance with P.S.C. Mo. – No. 24, Local Exchange Tariff, Section 1.2.2.E, regarding Lifeline Service.

Issued: October 17, 2006

Effective: December 1, 2006

By CINDY BRINKLEY, President – Missouri
St. Louis, Missouri

No Supplement to this tariff will be issued except for the purpose of canceling this tariff.

Missouri Portion-
Atchison, Kansas Exchange
7th Revised Sheet 2
Replacing 6th Revised Sheet 2

LOCAL EXCHANGE TARIFF

II. RATES (cont'd)

		<u>Maximum Rates</u>	
		<u>Business</u>	<u>Residence</u>
1.	Flat Rate Service		
	One-Party	\$17.56(CR)	\$9.51(CR)
	Lifeline	N/A	(1)
		<u>USOC</u>	<u>Monthly Rate</u>
	Urban Mileage Charge, per line	1LS1H	\$4.36(CR)
		<u>USOC</u>	<u>Monthly Rate</u>
	Urban Mileage Charge, per line	XUDV3	\$3.26(CR)
2.	Message Rate Service	<u>Rate</u>	<u>Local Message Allowance</u>
	Business One-Party	\$12.78(CR)	85
			<u>Additional Local Allowance</u>
			\$0.06

(1) A customer eligible under established criteria can receive a discount from his or her bill for residential essential local telecommunications services, in accordance with P.S.C. Mo. – No. 24, Local Exchange Tariff, Section 1.2.2.E, regarding Lifeline Service.

Issued: October 17, 2005

Effective: December 1, 2005

By CINDY BRINKLEY, President-SBC Missouri
Southwestern Bell Telephone, L.P., d/b/a SBC Missouri
St. Louis, Missouri

Cancelled

December 1, 2006

Missouri Public
Service Commission

Filed

Missouri Public
Service Commission

No Supplement to this tariff will be issued except for the purpose of canceling this tariff.

Missouri Portion-
Atchison, Kansas Exchange
6th Revised Sheet 2
Replacing 5th Revised Sheet 2

(RT)

LOCAL EXCHANGE TARIFF

II. RATES (cont'd)

		Maximum Rates	
		<u>Business</u>	<u>Residence</u>
(CT)(CR)	1. Flat Rate Service		
	One-Party Lifeline	\$17.91 N/A	\$9.70 (1)
		<u>USOC</u>	<u>Monthly Rate</u>
	Urban Mileage Charge, per line	1LS1H	\$4.45
		<u>USOC</u>	<u>Monthly Rate</u>
	Urban Mileage Charge, per line	XUDV3	\$3.33
		<u>Local Message Allowance</u>	<u>Additional Local Allowance</u>
	2. Message Rate Service		
	Business One-Party	<u>Rate</u> \$13.03	85 \$.06

CANCELLED

DEC 01 2005

By *74 RS 2*
Public Service Commission
MISSOURI

- (AT) (1) A customer eligible under established criteria can receive a discount from his or her bill for residential essential local telecommunications services, in accordance with P.S.C. Mo. – No. 24, Local Exchange Tariff, Section 1.2.2.E, regarding Lifeline Service.

Issued: April 1, 2005

Effective: May 1, 2005

By CINDY BRINKLEY, President-SBC Missouri
Southwestern Bell Telephone, L.P., d/b/a SBC Missouri
St. Louis, Missouri

TO-1998-0329

**FILED
MO PSC**

No Supplement to this tariff will be issued except for the purpose of canceling this tariff.

Missouri Portion-
Atchison, Kansas, Exchange
5th Revised Sheet 2
Replacing 4th Revised Sheet 2

SOUTHWESTERN BELL TELEPHONE COMPANY
LOCAL EXCHANGE TARIFF

II. RATES (cont'd)

		<u>Maximum Rates</u>	
		<u>Business</u>	<u>Residence</u>
1.	Flat Rate Service		
	One-Party Lifeline(1)	\$17.91(CR) N/A	\$9.70(CR) 6.20(CR)
		<u>USOC</u>	<u>Monthly Rate</u>
	Urban Mileage Charge, per line	1LS1H	\$4.45(CR)
		<u>USOC</u>	<u>Monthly Rate</u>
	Urban Mileage Charge, per line	XUDV3	\$3.33(CR)
		<u>Local Message Allowance</u>	<u>Additional Local Allowance</u>
2.	Message Rate Service		
	Business One-Party	<u>Rate</u> \$13.03(CR)	85 \$.06

CANCELLED

MAY 01 2005
by *WARS 2*
Public Service Commission
MISSOURI

(1) See P.S.C. Mo. – No. 24, Local Exchange Tariff, Section 1.2.2.E, for description, terms and conditions related to Lifeline Service.

Issued: October 15, 2004

Effective: December 1, 2004

By CINDY BRINKLEY, President-SBC Missouri
Southwestern Bell Telephone, L.P., d/b/a SBC Missouri
St. Louis, Missouri

**FILED
MO PSC**

(C) No Supplement to this tariff will be issued except for the purpose of canceling this tariff.

Missouri Portion-
Atchison, Kansas, Exchange
4th Revised Sheet 2
Replacing 3rd Revised Sheet 2
Missouri Public

SOUTHWESTERN BELL TELEPHONE COMPANY Service Commission
LOCAL EXCHANGE TARIFF

REC'D MAY 10 2004

II. RATES (cont'd)

		Maximum Rates	
		<u>Business</u>	<u>Residence</u>
(AT)	1. Flat Rate Service		
	One-Party Lifeline(1)	\$18.40 N/A	\$9.97 6.47(NR)
		<u>USOC</u>	<u>Monthly Rate</u>
	Urban Mileage Charge, per line	1LS1H	\$4.57
		<u>USOC</u>	<u>Monthly Rate</u>
	Urban Mileage Charge, per line	XUDV3	\$3.42
		<u>Local Message Allowance</u>	<u>Additional Local Allowance</u>
	2. Message Rate Service		
	Business One-Party	\$13.39	85 \$0.06

CANCELLED

DEC 01 2004
by SMRS2
Public Service Commission
MISSOURI

(AT) (1) See P.S.C. Mo. - No. 24, Local Exchange Tariff, Section 1.2.2.E, for description, terms and conditions related to Lifeline Service.

Issued: May 10, 2004

Effective: June 9, 2004

By CINDY BRINKLEY, President-SBC Missouri
Southwestern Bell Telephone, L.P., d/b/a SBC Missouri
St. Louis, Missouri

Missouri Public
Service Commission

FILED JUN 09 2004

No Supplement to this tariff will be issued except for the purpose of canceling this tariff.

Missouri Portion-
Atchinson, Kansas, Exchange
3rd Revised Sheet 2
Replacing 2nd Revised Sheet 2

SOUTHWESTERN BELL TELEPHONE COMPANY
LOCAL EXCHANGE TARIFF

Missouri Public

II. RATES (cont'd)

REC'D OCT 15 2003

Maximum Rates

	<u>Business</u>	<u>Residence</u>	
1. Flat Rate Service			Service Commission
One-Party	\$18.40(CR)	\$9.97	
	<u>USOC</u>	<u>Monthly Rate</u>	
Urban Mileage Charge, per line	1LS1H	\$4.57	
	<u>USOC</u>	<u>Monthly Rate</u>	
Urban Mileage Charge, per line	XUDV3	\$3.42	
2. Message Rate Service	<u>Rate</u>	<u>Local Message Allowance</u>	<u>Additional Local Allowance</u>
Business One-Party	\$13.39(CR)	85	\$0.06

CANCELLED
JUN 09 2004
by *YHRS 2*
Public Service Commission
MISSOURI

Issued: October 15, 2003

Effective: December 1, 2003

By CINDY BRINKLEY, President-SBC Missouri
Southwestern Bell Telephone, L.P., d/b/a SBC Missouri
St. Louis, Missouri

Missouri Public
Service Commission

FILED DEC 01 2003

No Supplement to this tariff will be issued except for the purpose of canceling this tariff.

Missouri Portion-
Atchison, Kansas, Exchange
2nd Revised Sheet 2
Replacing 1st Revised Sheet 2

SOUTHWESTERN BELL TELEPHONE COMPANY
LOCAL EXCHANGE TARIFF

Missouri Public
Service Commission

II. RATES

REC'D OCT 15 2002

		Maximum Rates	
		<u>Business</u>	<u>Residence</u>
1. Flat Rate Service			
One-Party		\$18.41(CR)	\$9.97(CR)
		<u>USOC</u>	<u>Monthly Rate</u>
Urban Mileage Charge, per line		1LS1H	\$4.57(CR)
		<u>USOC</u>	<u>Monthly Rate</u>
Urban Mileage Charge, per line		XUDV3	\$3.42(CR)
		<u>Local Message Allowance</u>	<u>Add'l Local Allowance</u>
2. Message Rate Service	<u>Rate</u>		
Business One-Party	\$13.40(CR)	85	\$.06

CANCELLED
DEC 01 2003
3rd RSZ
Missouri Public Service Commission
MISSOURI

Missouri Public
Service Commission

FILED DEC 01 2002

Issued: October 15, 2002

Effective: December 1, 2002

By CINDY BRINKLEY, President-Missouri
Southwestern Bell Telephone, L.P., d/b/a Southwestern Bell Telephone Company
St. Louis, Missouri

No supplement to this tariff will be issued except for the purpose of canceling this tariff.

MISSOURI PORTION-ATCHISON, KANSAS, EXCHANGE
1st Revised Sheet 2
Replacing Original Sheet 2

Missouri Public

SOUTHWESTERN BELL TELEPHONE COMPANY
LOCAL EXCHANGE TARIFF

REC'D OCT 01 2001

Service Commission

MAXIMUM Rates

1. Flat Rate Service	<u>Business</u>	<u>Residence</u>
One-Party	\$18.24 (CR)	\$9.89 (CR)

Urban Mileage Charge, per line	<u>USOC</u> ILSIH	<u>Monthly Rate</u> \$4.53 (CR)
--------------------------------	----------------------	------------------------------------

Urban Mileage Charge, per line	<u>USOC</u> XUDV3	<u>Monthly Rate</u> \$3.39 (CR)
--------------------------------	----------------------	------------------------------------

2. Message Rate Service	<u>Rate</u>	<u>Local Message Allowance</u>	<u>Add'l. Local Allowance</u>
Business One-Party	\$13.28 (CR)	85	\$0.06

CANCELLED

DEC 01 2002

2nd RSZ
Public Service Commission
MISSOURI

Issued: October 1, 2001

Effective: December 1, 2001

By JAN NEWTON, President-Missouri
Southwestern Bell Telephone Company
St. Louis, Missouri

Missouri Public

FILED DEC 01 2001

Service Commission

No supplement to this tariff will be issued except for the purpose of canceling this tariff.

MISSOURI PORTION-ATCHISON, KANSAS, EXCHANGE
Original Sheet 2

Missouri Public Service Commission

SOUTHWESTERN BELL TELEPHONE COMPANY LOCAL EXCHANGE TARIFF
REC'D OCT 02 2000

MAXIMUM rates

1. Flat Rate Service		<u>Business</u>	<u>Residence</u>
One-Party		\$18.38	\$9.96
		<u>USOC</u>	<u>Monthly Rate</u>
Urban Mileage Charge, per line		ILSIH	\$4.56
		<u>USOC</u>	<u>Monthly Rate</u>
Urban Mileage Charge, per line		XUDV3	\$3.42
2. Message Rate Service		<u>Local Message Allowance</u>	<u>Add'l. Local Allowance</u>
	<u>Rate</u>		
Business One-Party	\$13.38	85	\$0.06

CANCELLED

DEC 01 2001
By ISTRS2
Public Service Commission
MISSOURI

Missouri Public Service Commission


FILED DEC 01 2000


Issued: October 2, 2000


Effective: December 1, 2000


By JAN NEWTON, President-Missouri
Southwestern Bell Telephone Company
St. Louis, Missouri

LEGEND

 **N**

 **CITY**

 **EXCHANGE AREA BOUNDARY**

 **BASE RATE AREA BOUNDARY**

SCALE: 3/8" = 1 MILE

ATCHISON, KANSAS
 11th Revised Sheet 1-B
 Replacing 10th Revised Sheet 1-B

RECEIVED

DEC 4 1992

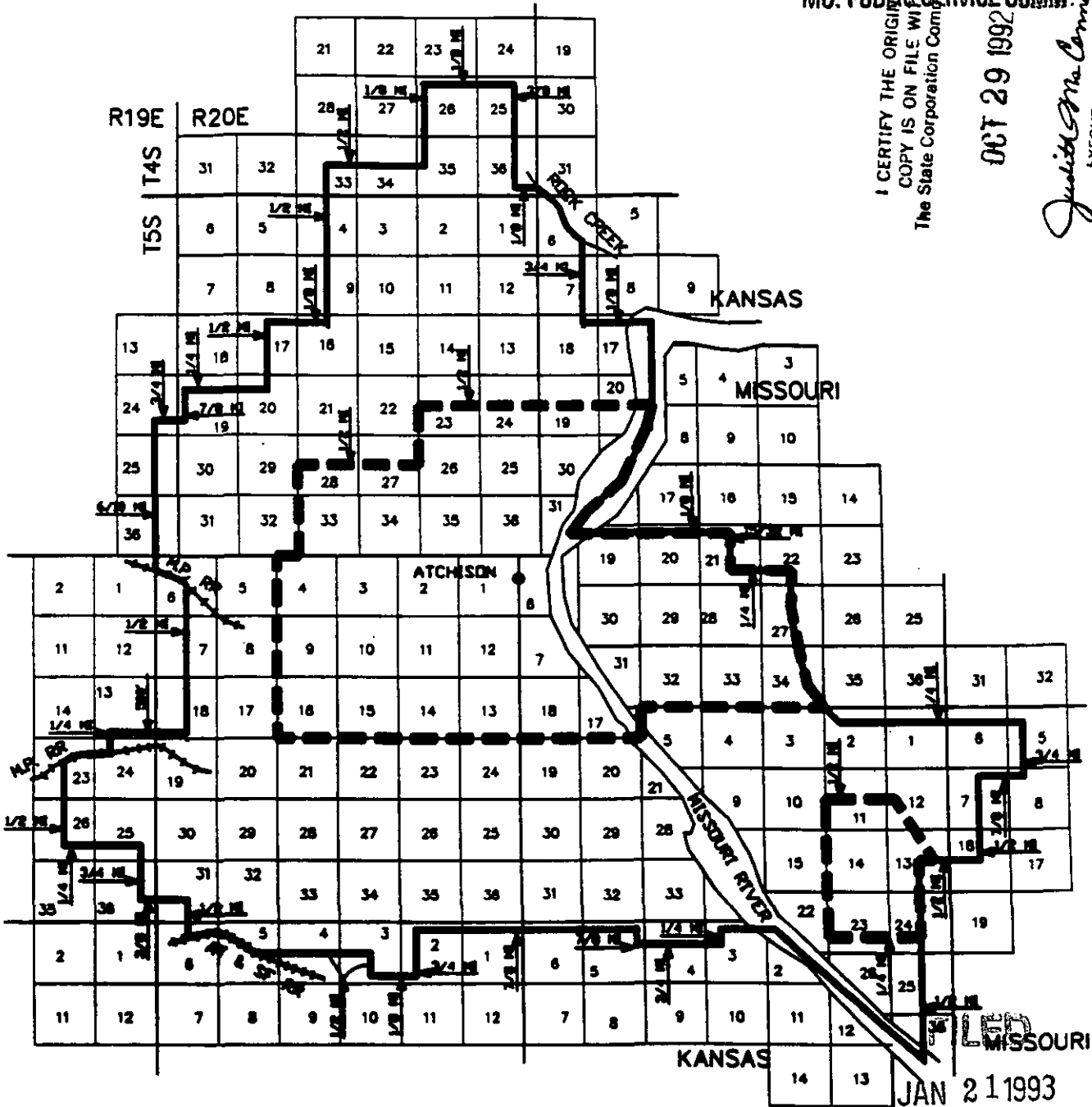
EXCHANGE AREA MAP

MO. PUBLIC SERVICE COMM.

I CERTIFY THE ORIGINAL COPY IS ON FILE WITH The State Corporation Commission.

OCT 29 1992

Judith M. Connell
 EXECUTIVE DIRECTOR



JAN 21 1993

MO. PUBLIC SERVICE COMM.
 JAN 22 1993

EFFECTIVE APR 8, 1992 THE ONLY GRADE OF SERVICE AVAILABLE IS ONE PARTY

ISSUED: MAR 18 1992 EFFECTIVE: APR 08 1992

**BY: J.W. CALLAWAY, President - Kansas Division
 Southwestern Bell Telephone Company
 Topeka, Kansas**

Commission Docket Number **166856**

FILED MAR 19 1992

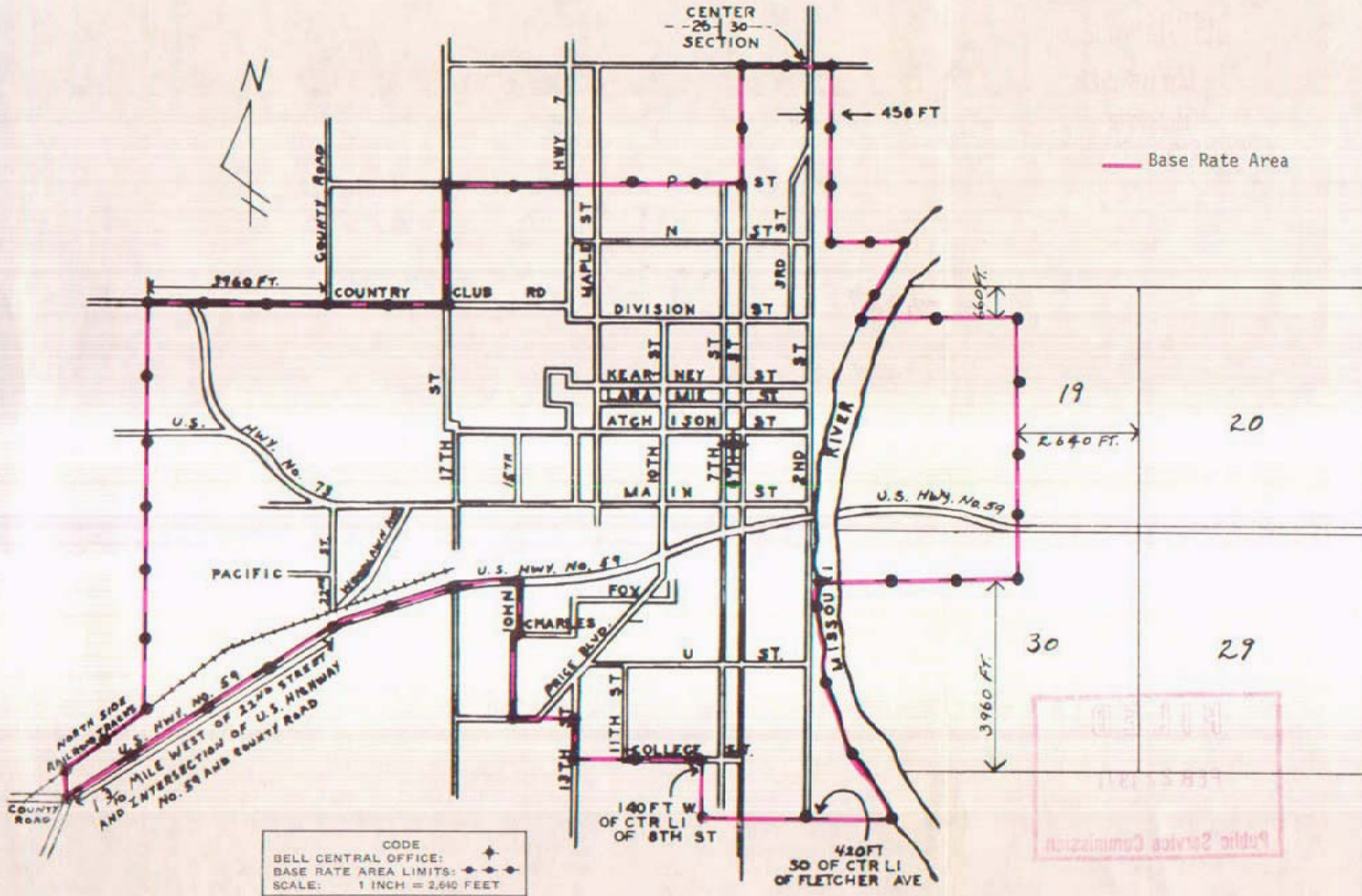
**THE STATE CORPORATION COMMISSION
 OF KANSAS**

CANCELLED
 June 29, 2007
 TO-2002-185
 Missouri Public
 Service Commission

NO SUPPLEMENT TO THIS TARIFF WILL BE ISSUED EXCEPT FOR THE PURPOSE OF CANCELLING THIS TARIFF.

Missouri Portion - Atehison, Kansas Exchange
ORIGINAL SHEET 2

P. S. C. Mo. No. 17
BASE RATE AREA MAP



Issued: JAN 28 1971

Effective: FEB 27 1971

CANCELLED
June 29, 2007
TO-2002-185
Missouri Public
Service Commission

By R. R. SHOCKLEY, Vice President, Missouri-Illinois
Southwestern Bell Telephone Company
St. Louis, Missouri

NO SUPPLEMENT TO THIS TARIFF WILL BE ISSUED EXCEPT FOR THE PURPOSE OF CANCELLING THIS TARIFF.

Missouri Portion - Atchison, Kansas Exchange

5th REVISED SHEET 3
REPLACING 4th REVISED SHEET 3

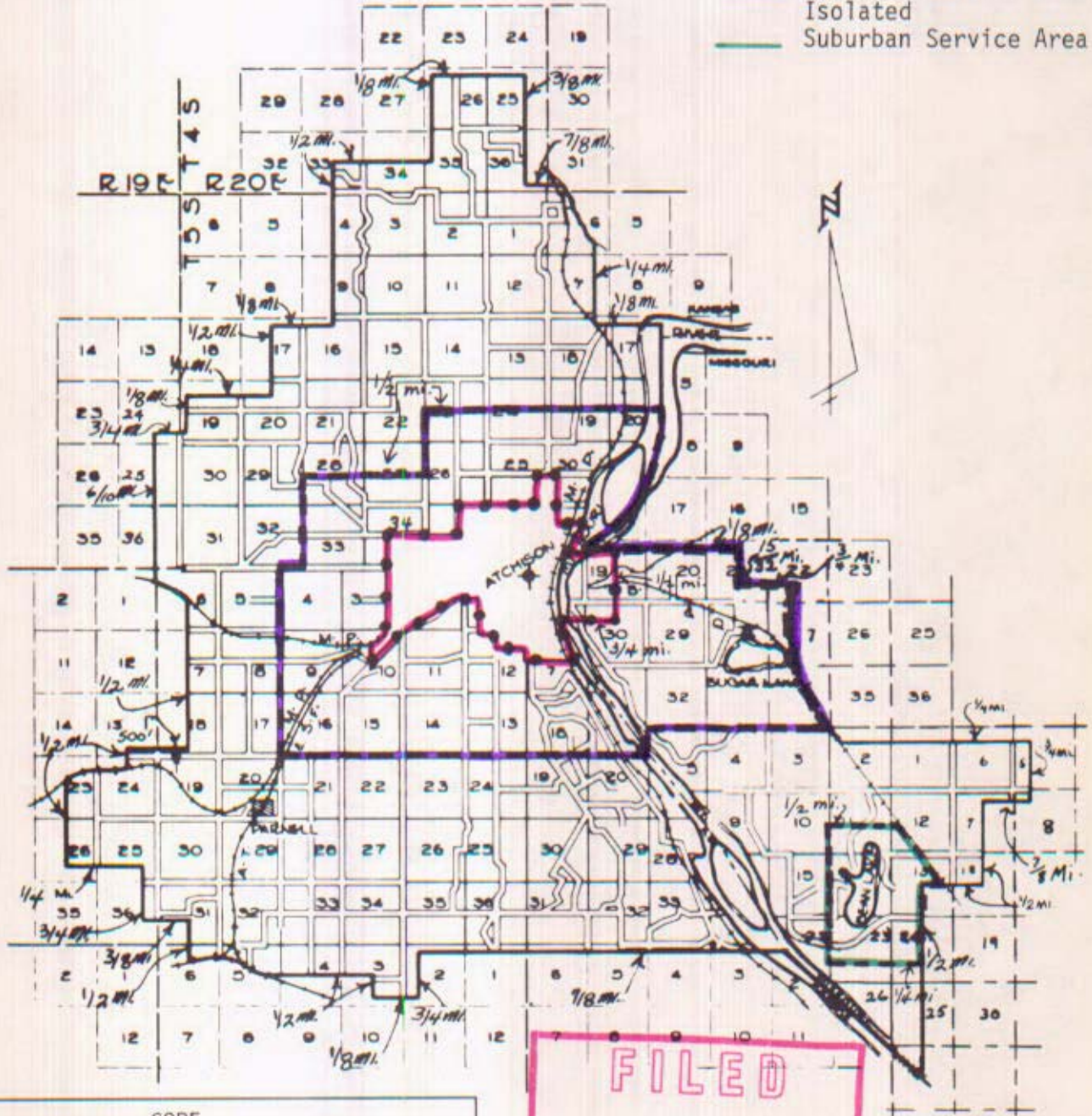
RECEIVED






JAN 25 1971

MISSOURI
Public Service Commission

P. S. C. Mo. No. 17
EXCHANGE AREA MAP

- Base Rate Area
- Suburban Service Area
- Isolated
- Suburban Service Area



CODE
 BELL CENTRAL OFFICE: 
 BASE RATE AREA LIMITS: 
 SUBURBAN SERVICE AREA LIMITS: 
 ISOLATED SUBURBAN SERVICE AREA LIMITS: 
 EXCHANGE AREA LIMITS: 
 SCALE: 3/8 INCH = 1 MILE

FILED
 FEB 27 1971
 Public Service Commission

Issued: JAN 28 1971

Effective: FEB 27 1971

CANCELLED
 June 29, 2007
 TO-2002-185
 Missouri Public
 Service Commission

By R. R. SHOCKLEY, Vice President, Missouri-Illinois
 Southwestern Bell Telephone Company
 St. Louis, Missouri