

SBC PSC MO #17  
Neosho, Missouri  
5<sup>th</sup> Revised Sheet 2  
Replacing 4<sup>th</sup> Revised Sheet 2

# Non-Scannable Map

(Is viewable in the Data Center  
200 Madison Street, 1<sup>st</sup> Floor  
Jefferson City MO)

NO SUPPLEMENT TO THIS TARIFF WILL BE ISSUED EXCEPT FOR THE PURPOSE OF CANCELING THIS TARIFF.

P. S. C. Mo. No. 17

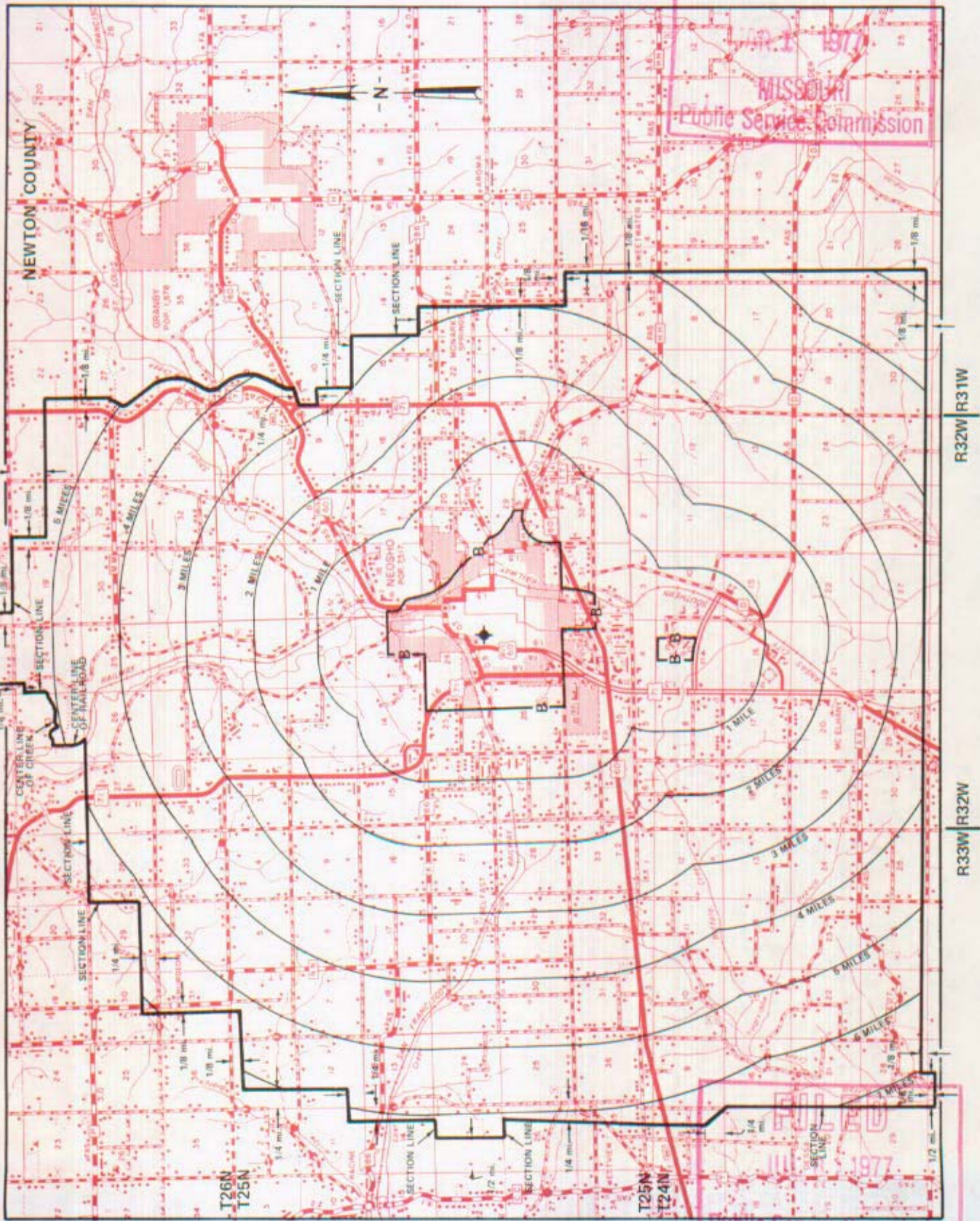
Neosho, Missouri

# EXCHANGE AREA MAP

14th REVISED SHEET 3  
REPLACING 13th REVISED SHEET 3

RECEIVED

MARCH 2 1977  
MISSOURI  
Public Service Commission



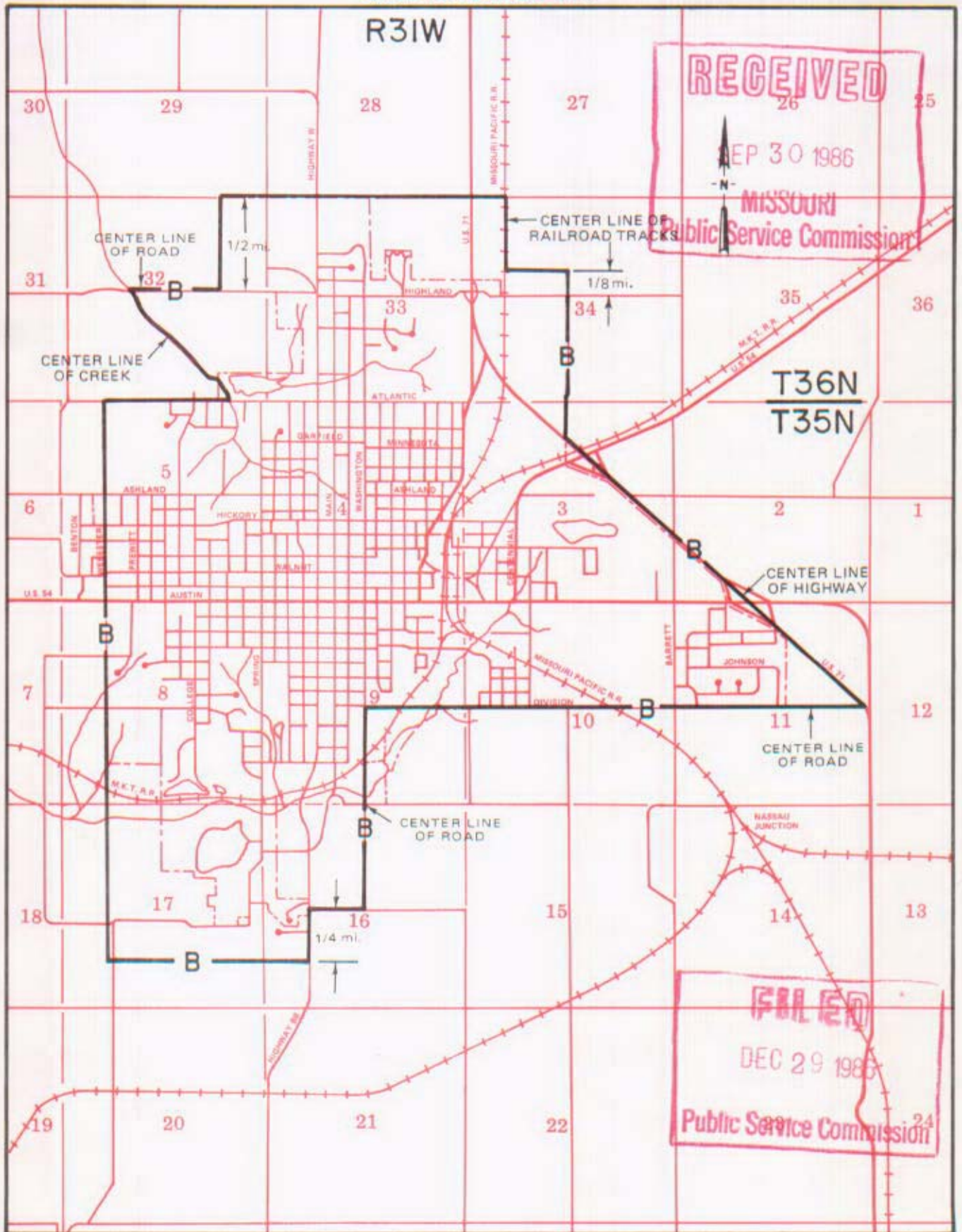
FILED  
JUL 8 1977  
Public Service Commission

By R. R. SHOCKLEY, Vice President, Missouri  
Southwestern Bell Telephone Company  
St. Louis, Missouri

Issued: March 1, 1977

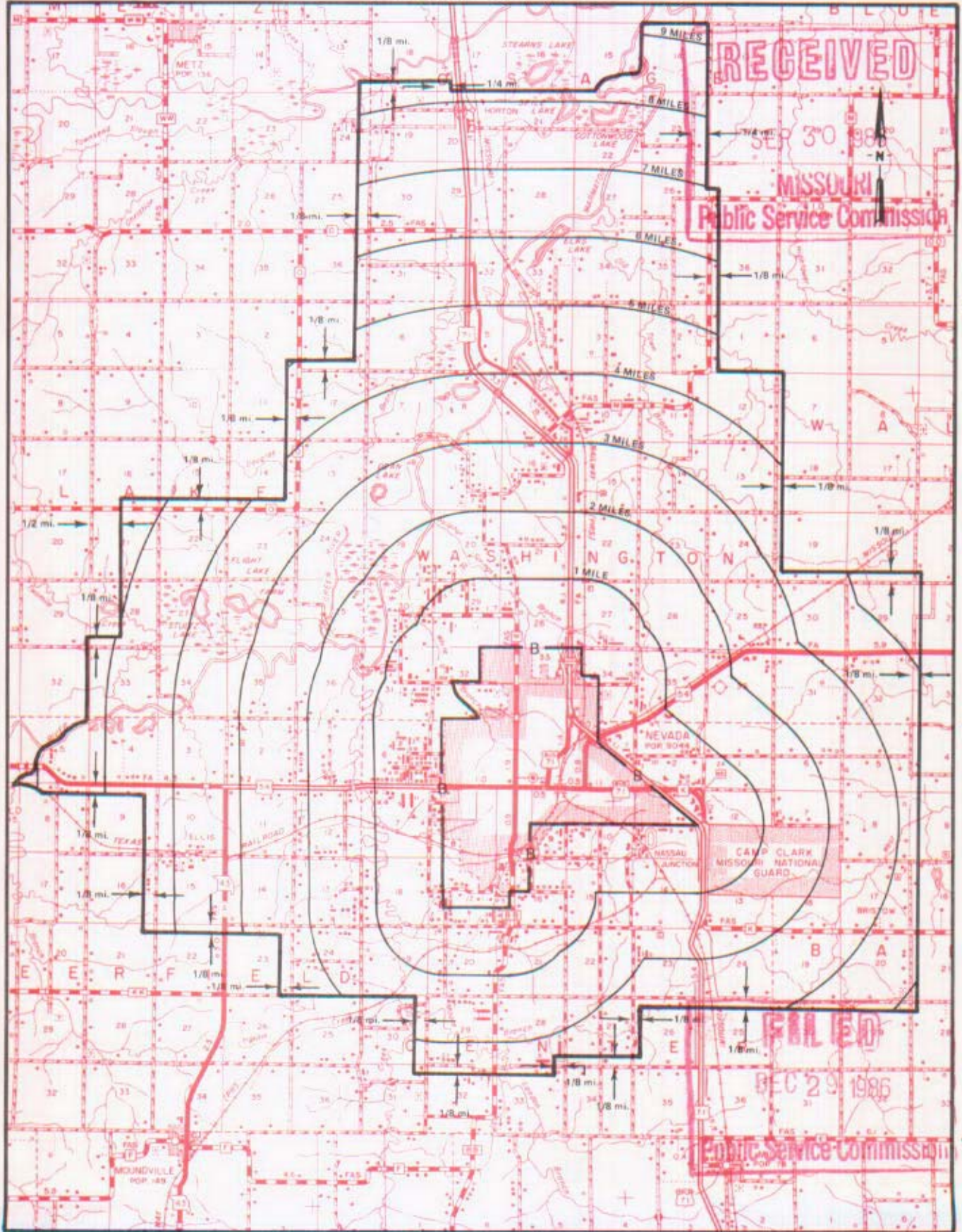
Effective: JUL 8 1977

BASE RATE AREA MAP



By R.D. BARRON, PRESIDENT—MISSOURI DIVISION  
Southwestern Bell Telephone Company  
St. Louis, Missouri

EXCHANGE AREA MAP



R33W | R32W

R32W | R31W

R31W | R30W

By R.D. BARRON, PRESIDENT—MISSOURI DIVISION  
Southwestern Bell Telephone Company  
St. Louis, Missouri

Issued: SEPTEMBER 30, 1986

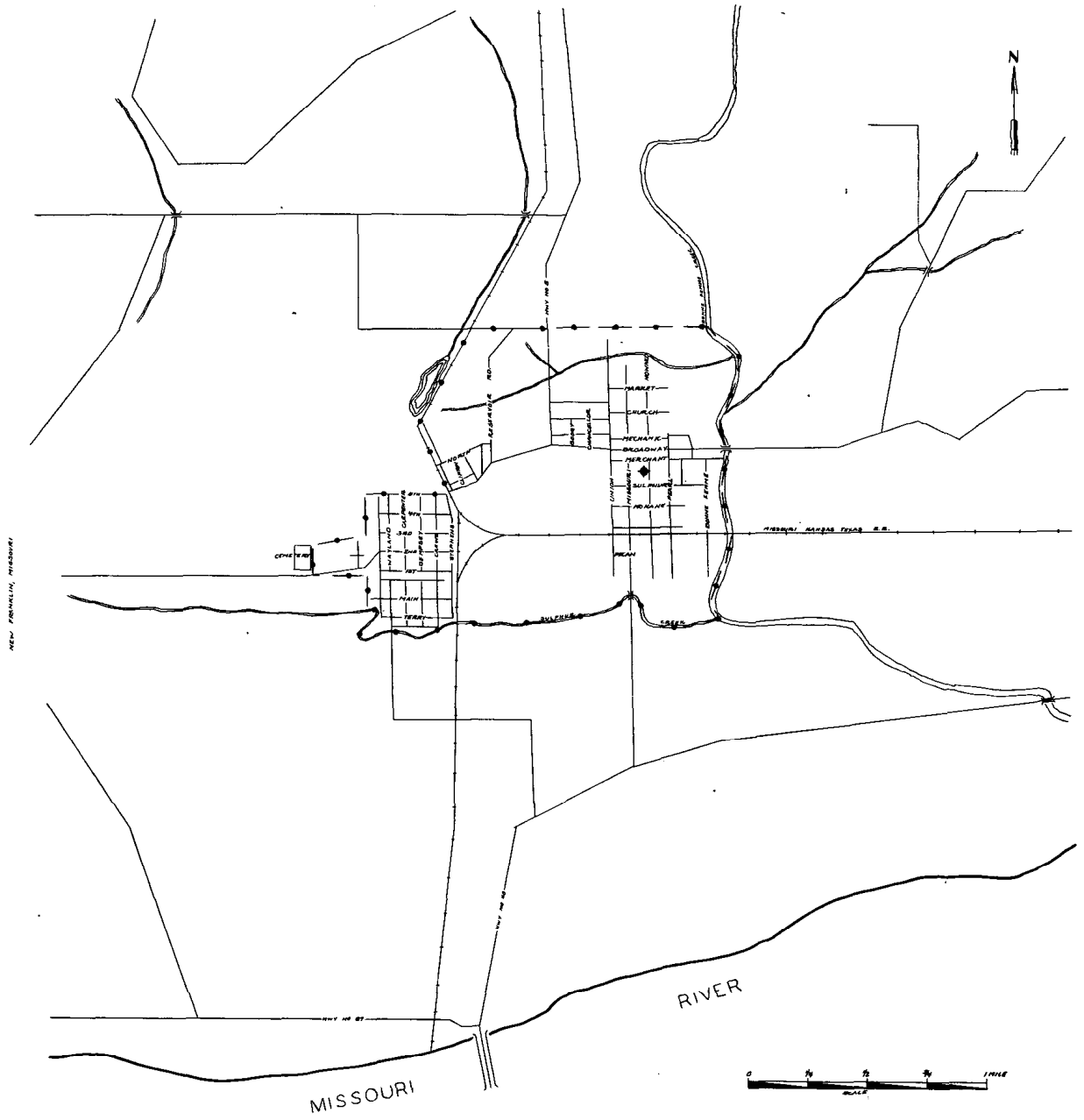
Effective: DECEMBER 29, 1986

NO SUPPLEMENT TO THIS TARIFF WILL BE ISSUED EXCEPT FOR THE PURPOSE OF CANCELING THIS TARIFF.

P. S. C.-Mo. No. 17

New Franklin, Missouri  
ORIGINAL SHEET 2  
REPLACING ORIGINAL SHEET 1-A

BASE RATE AREA MAP



Issued: June 27, 1950

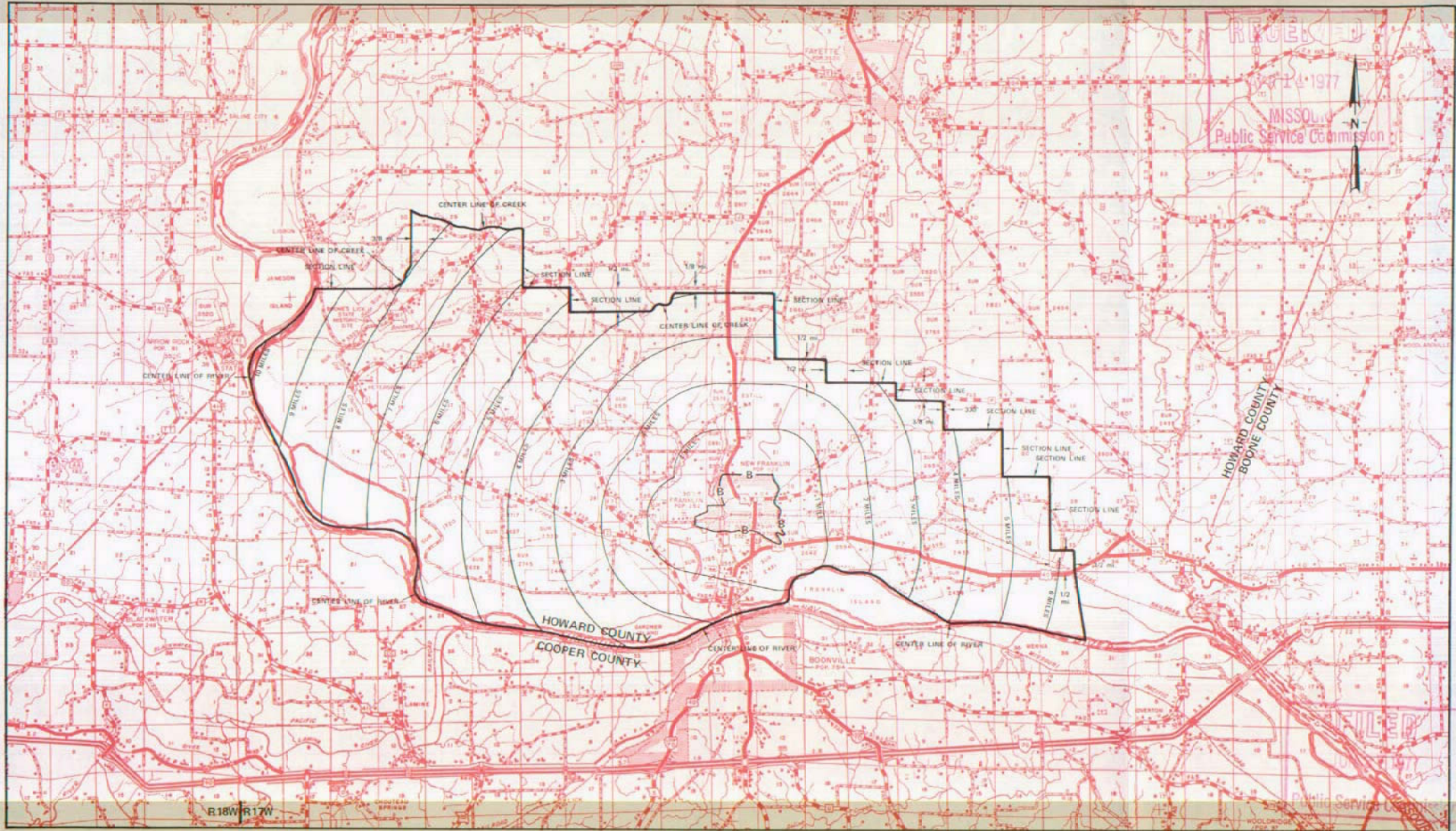
By H. R. TOWLES, General Manager  
Southwestern Bell Telephone Company  
St. Louis, Missouri

Effective: July 6, 1950

NO SUPPLEMENT TO THIS TARIFF WILL BE ISSUED EXCEPT FOR THE PURPOSE OF CANCELING THIS TARIFF.

P. S. C. Mo. No. 17  
EXCHANGE AREA MAP

New Franklin, Missouri  
6th REVISED SHEET 3  
REPLACING 5th REVISED SHEET 3



By R. R. SHOCKLEY, Vice President, Missouri  
Southwestern Bell Telephone Company  
St. Louis, Missouri

R17W | R16W

R16W | R15W

R15W | R14W

Issued: April 11, 1977

Effective: June 27, 1977

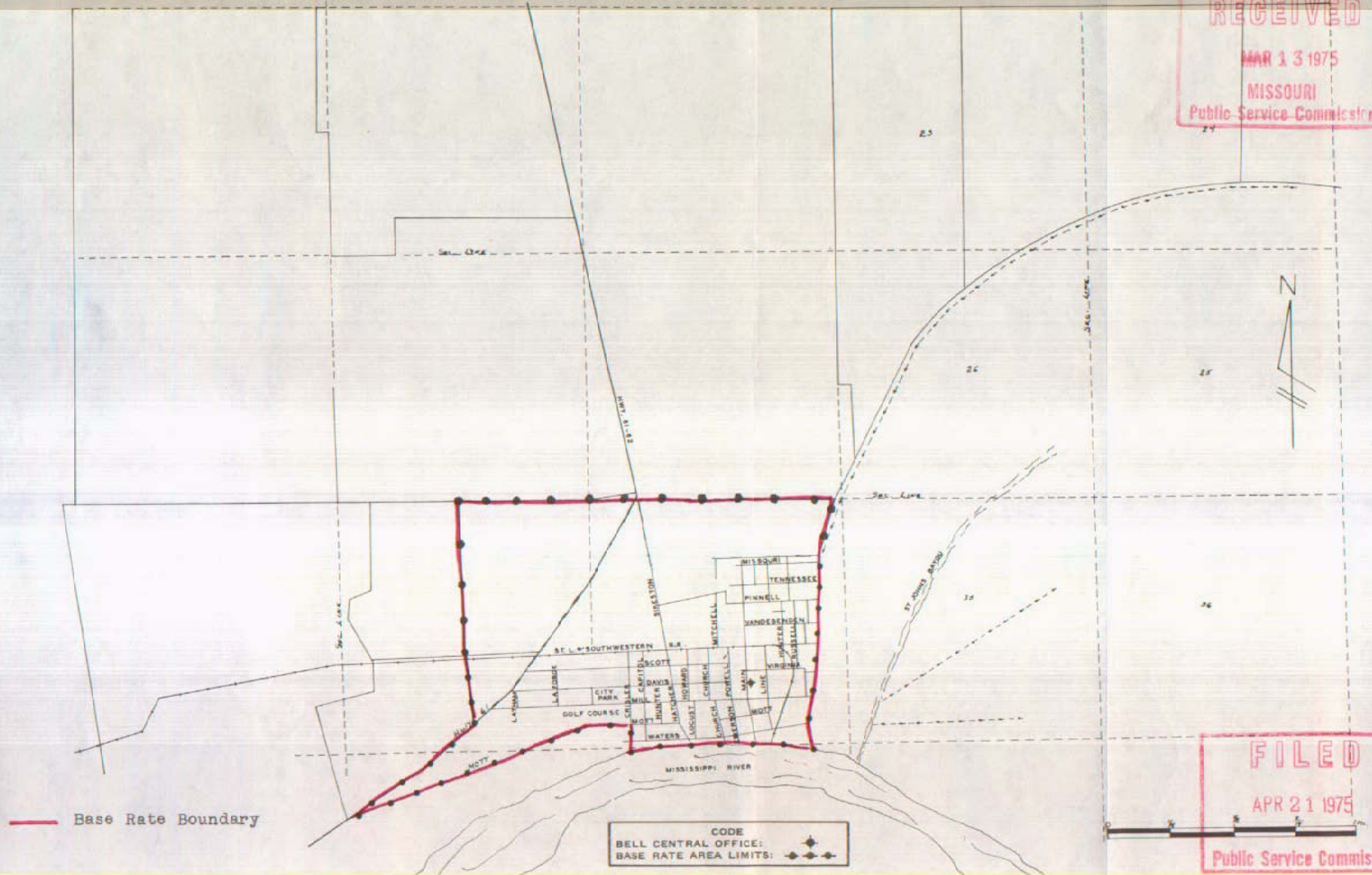
NO SUPPLEMENT TO THIS TARIFF WILL BE ISSUED EXCEPT FOR THE PURPOSE OF CANCELING THIS TARIFF.

New Madrid, Missouri  
1st REVISED SHEET 2  
REPLACING REVISED ORIGINAL SHEET 2

P. S. C. Mo. No. 17  
BASE RATE AREA MAP

RECEIVED  
MAR 13 1975  
MISSOURI  
Public Service Commission

NEW MADRID, MO.



FILED  
APR 21 1975  
Public Service Commission

Issued: March 21, 1975

Effective: April 21, 1975

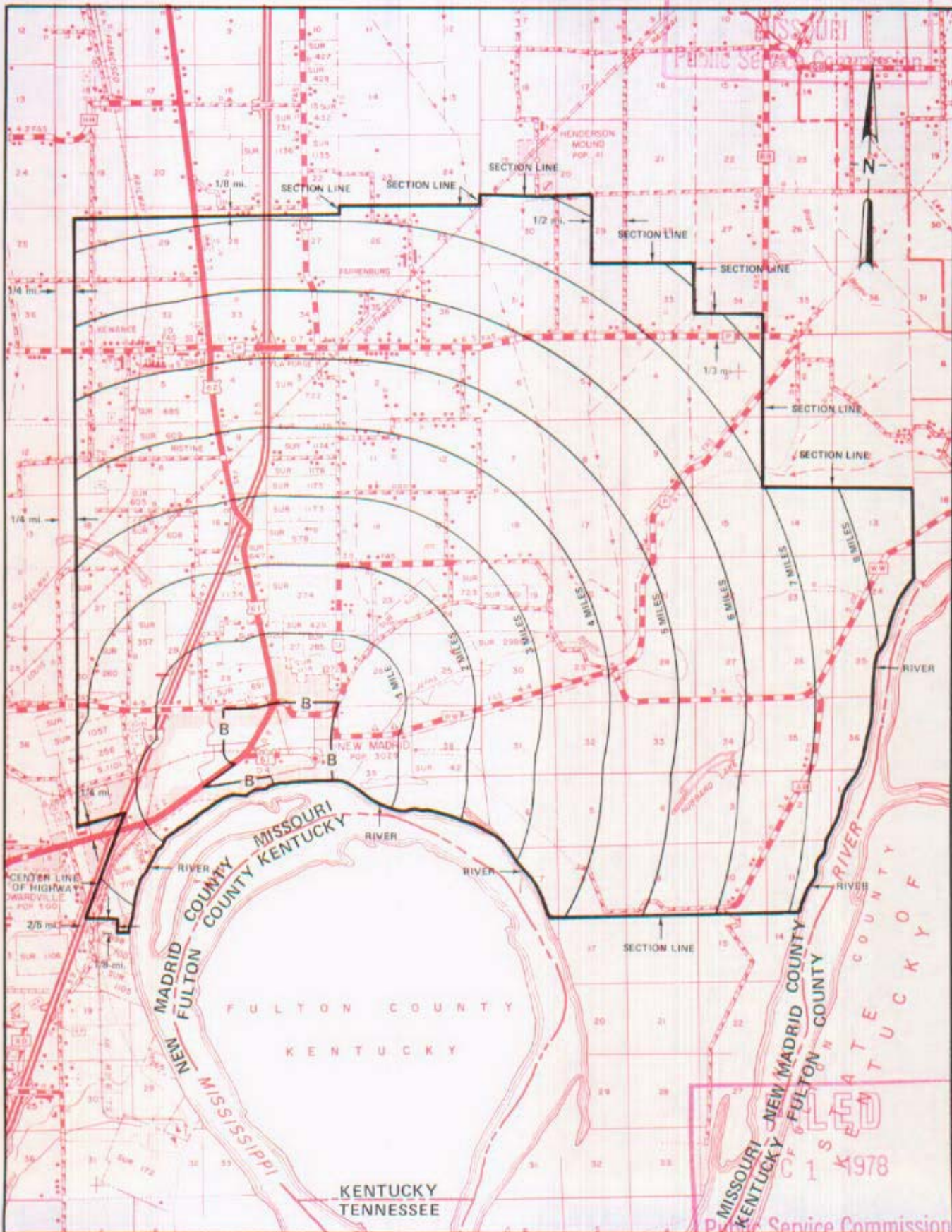
By R. R. SHOCKLEY, Vice President, Missouri  
Southwestern Bell Telephone Company  
St. Louis, Missouri

NO SUPPLEMENT TO THIS TARIFF WILL BE ISSUED EXCEPT FOR THE PURPOSE OF CANCELING THIS TARIFF.

P. S. C. Mo. No. 17

# EXCHANGE AREA MAP

**RECEIVED**  
New Madrid, Missouri  
4th REVISED SHEET 3  
REPLACING 3rd REVISED SHEET 3  
FEB 14 1977



T24N  
T23N

T23N  
T22N

T22N  
T21N

R13E | R14E

R14E | R15E

R15E | R16E

By R. R. SHOCKLEY, Vice President, Missouri  
Southwestern Bell Telephone Company

DEC 1 1978

Issued: February 15, 1977

St. Louis, Missouri

Effective: April 15, 1977

**FILED**  
C 1 1978  
Public Service Commission



No supplement to this tariff will be issued except for the purpose of canceling this tariff.

P.S.C. Mo. No. 17

NIXA, MISSOURI  
2ND REVISED SHEET 1  
REPLACING 1ST REVISED SHEET 1

RECEIVED  
DEC 20 1961  
MISSOURI  
Public Service Comm.

For local and general exchange rates applicable to Nixa, please refer to the Local Exchange Tariff Sheet 1, Sheet 1.1, Sheet 1.2, Sheet 1-D and the General Tariffs.

FILED

JAN 19 1962

PUBLIC SERVICE COMMISSION

Issued: December 19, 1961

Effective: January 19, 1962

By F. B. HUNT, Vice President and General Manager  
Southwestern Bell Telephone Company  
St. Louis, Missouri

No supplement to this  
tariff will be issued  
except for the purpose  
of canceling this tariff

NIXA, MISSOURI  
5th Revised Sheet 2  
Replacing 4th Revised Sheet 2

BASE RATE AREA MAP

THIS AREA IS INCLUDED IN THE SPRINGFIELD METROPOLITAN EXCHANGE.

**RECEIVED**

MAY 25 1993

MO. PUBLIC SERVICE COMM

FILED

JUL 07 1993

92-306

MO. PUBLIC SERVICE COMM

Issued: MAY 25 1993

Effective: JUL 07 1993

By A. D. ROBERTSON, Assistant Vice President-External Affairs  
Southwestern Bell Telephone Company  
St. Louis, Missouri

No supplement to this  
tariff will be issued  
except for the purpose  
of canceling this tariff

NIXA, MISSOURI  
11th Revised Sheet 3  
Replacing 10th Revised Sheet 3

EXCHANGE AREA MAP

THIS AREA IS INCLUDED IN THE SPRINGFIELD METROPOLITAN EXCHANGE.

**RECEIVED**

MAY 25 1993

MO. PUBLIC SERVICE COMM.

FILED

JUL 07 1993  
92-306

MO. PUBLIC SERVICE COMM.

Issued: **MAY 25 1993**

Effective: **JUL 07 1993**

By A. D. ROBERTSON, Assistant Vice President-External Affairs  
Southwestern Bell Telephone Company  
St. Louis, Missouri

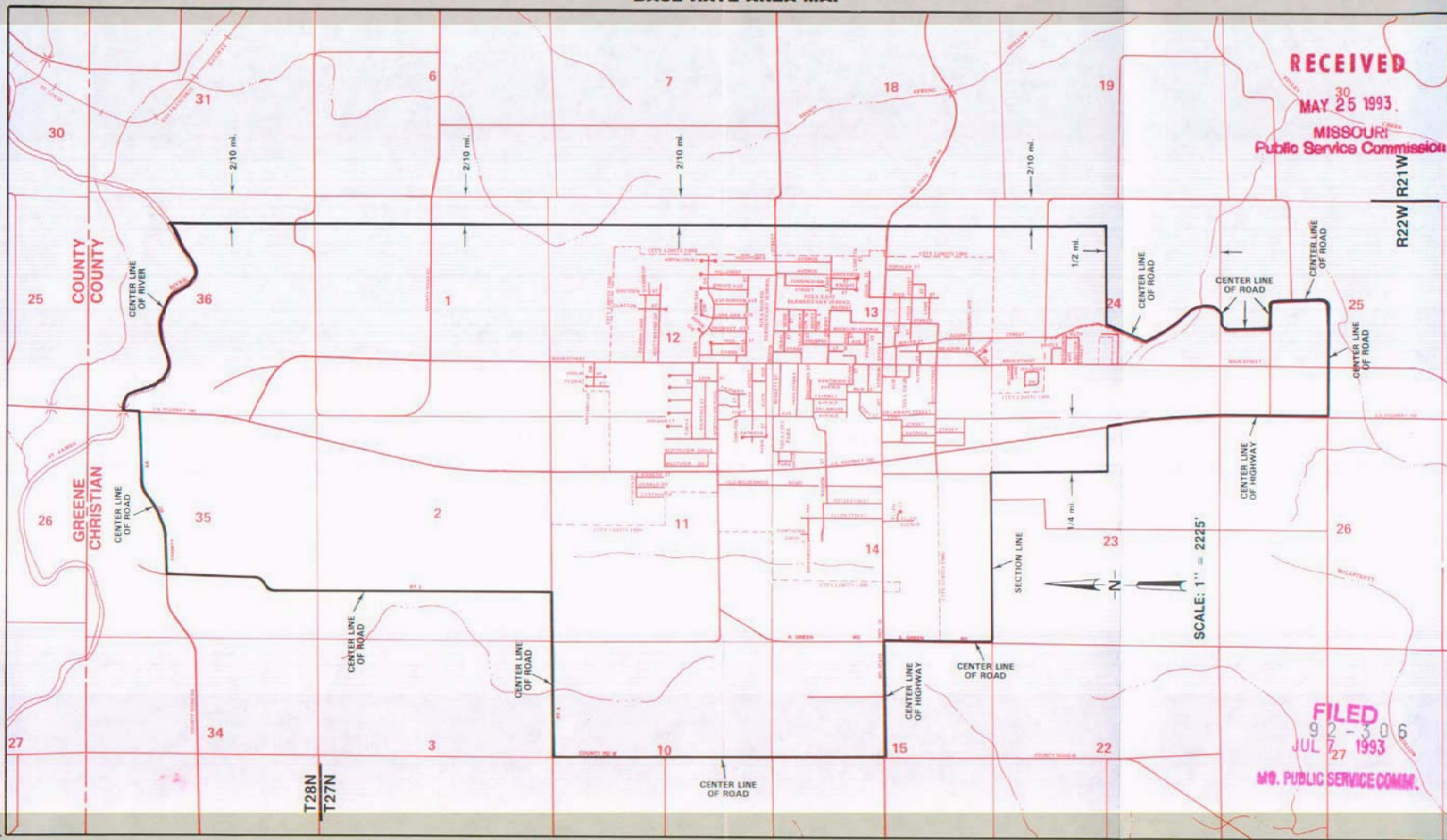
NO SUPPLEMENT TO THIS TARIFF WILL BE ISSUED EXCEPT FOR THE PURPOSE OF CANCELING THIS TARIFF.

P. S. C. Mo. No. 17  
BASE RATE AREA MAP

SPRINGFIELD METROPOLITAN EXCHANGE

Nixa Zone

ORIGINAL SHEET 3-A



Issued: MAY 25, 1993

By A. D. ROBERTSON, Assistant Vice President - External Affairs  
Southwestern Bell Telephone Company  
St. Louis, Missouri

Effective: JULY 7, 1993

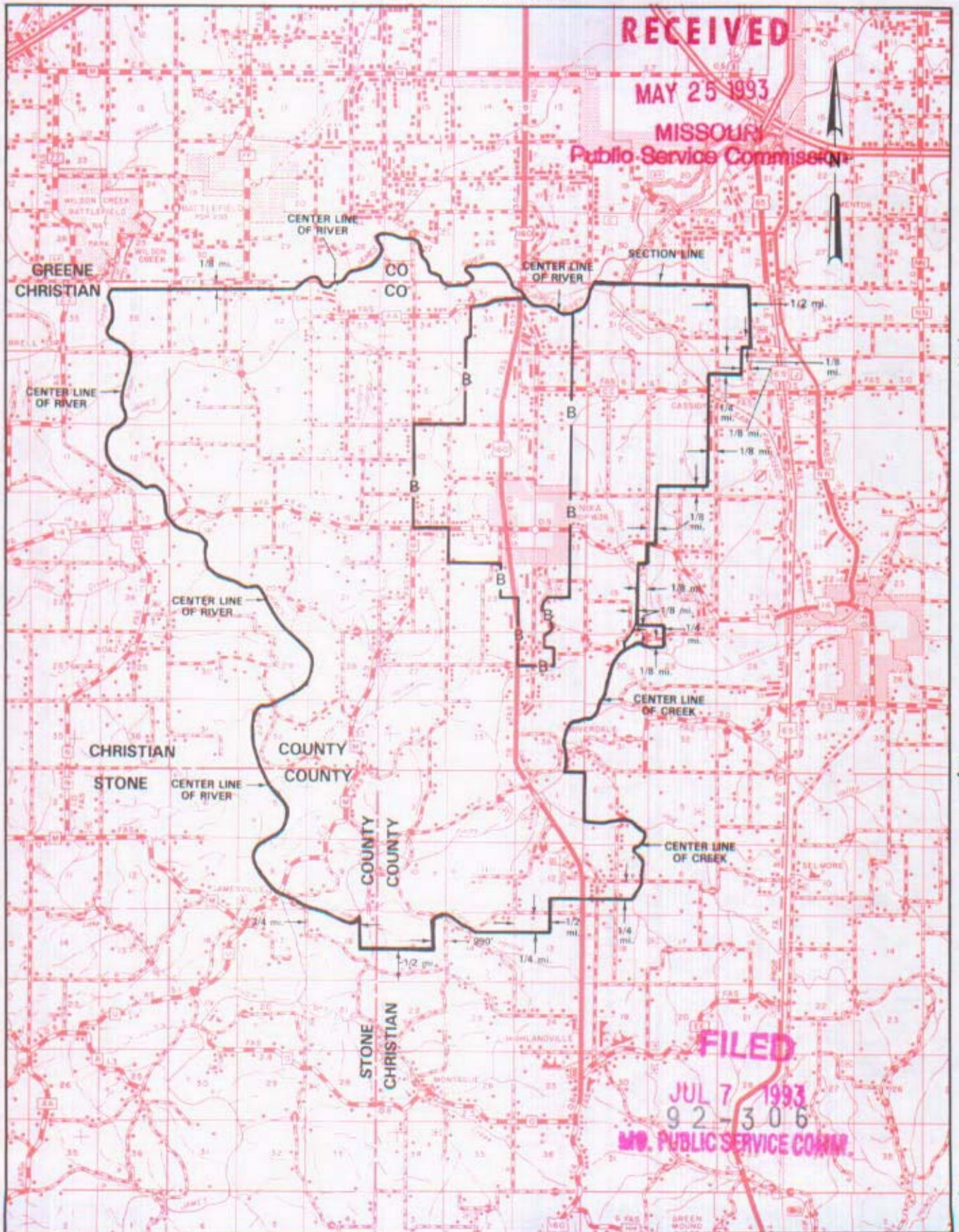
NO SUPPLEMENT TO THIS TARIFF WILL BE ISSUED EXCEPT FOR THE PURPOSE OF CANCELING THIS TARIFF.

SPRINGFIELD METROPOLITAN EXCHANGE

Nixa Zone

ORIGINAL SHEET 3-B

# P. S. C. Mo. No. 17 ZONE AREA MAP



RECEIVED

MAY 25 1993

MISSOURI  
Public Service Commission

T28N  
T27N

T27N  
T26N

T26N  
T25N

R23W | R22W

R22W | R21W

By A. D. ROBERTSON, Assistant Vice President - External Affairs  
Southwestern Bell Telephone Company  
St. Louis, Missouri

Issued: MAY 25, 1993

Effective: JULY 7, 1993

NO SUPPLEMENT TO THIS TARIFF WILL  
BE ISSUED EXCEPT FOR THE PURPOSE OF  
CANCELING THIS TARIFF.

P. S. C. Mo. No. 17  
**BASE RATE AREA MAP**

South Nixa, Missouri

1st REVISED SHEET 2  
REPLACING ORIGINAL SHEET 2

**RECEIVED**  
DEC - 7 1981  
MISSOURI  
Public Service Commission

**THIS BASE RATE AREA IS INCLUDED IN THE NIXA EXCHANGE**

**FILED**  
DEC - 9 1981  
81 - 208  
Public Service Commission

DEC 07 1981

Issued:

By R. R. SHOCKLEY, Vice President, Missouri  
Southwestern Bell Telephone Company  
St. Louis, Missouri

Effective: DEC 9, 1981

NO SUPPLEMENT TO THIS TARIFF WILL  
BE ISSUED EXCEPT FOR THE PURPOSE OF  
CANCELING THIS TARIFF.

P. S. C. Mo. No. 17  
**EXCHANGE AREA MAP**

South Nixa, Missouri

5th REVISED SHEET 3  
REPLACING 4th REVISED SHEET 3

**RECEIVED**  
DEC - 7 1981  
MISSOURI  
Public Service Commission

T28N  
T27N

**THIS EXCHANGE IS INCLUDED IN THE NIXA EXCHANGE**

T27N  
T26N

**FILED**  
DEC - 9 1981  
81 - 208  
Public Service Commission

T26N  
T25N

R23W | R22W

R22W | R21W

DEC 07 1981

By R. R. SHOCKLEY, Vice President, Missouri  
Southwestern Bell Telephone Company  
St. Louis, Missouri

Effective: DEC 09 1981

Issued: \_\_\_\_\_