

No Supplement to this tariff will be issued except for the purpose of canceling this tariff.

Long Distance Message Telecommunications Service Tariff
7th Revised Sheet 16
Replacing 6th Revised Sheet 16

LONG DISTANCE MESSAGE TELECOMMUNICATIONS SERVICE

1.4 TWO-POINT SERVICE

1.4.1 Classes of Service

Service is offered on a Dial Station-to-Station and Person-to-Person basis. Day, Evening, Night and Weekend rates apply to all classes of service.

(CT) A. Residence Class of Service

	MON	TUE	WED	THU	FRI	SAT	SUN
8:00 AM to 5:00 PM	Day Rate Period					Night Rate & Weekend Rate Period	
5:00 PM to 11:00 PM	Evening Rate Period						Eve. Rate
11:00 PM to 8:00 AM	Night Rate & Weekend Rate Period						

B. The time of day at the location of the calling service point governs.

Issued: July 2, 2004

Effective: July 15, 2004

By CINDY BRINKLEY, President-SBC Missouri
Southwestern Bell Telephone, L.P., d/b/a SBC Missouri
St. Louis, Missouri

No Supplement to this tariff will be issued except for the purpose of canceling this tariff.

Long Distance Message
Telecommunications Service Tariff
6th Revised Sheet 16
Replacing 5th Revised Sheet 16

LONG DISTANCE MESSAGE TELECOMMUNICATIONS SERVICE

Missouri Public

1.4 TWO-POINT SERVICE

REC'D MAR 26 2002

1.4.1 Classes of Service

Service Commission

Service is offered on a Dial Station-to-Station and Person-to-Person basis. Day, Evening, Night and Weekend rates apply to all classes of service.

(RT)

A. All Classes of Service

	MON	TUE	WED	THU	FRI	SAT	SUN
(RT) 8:00 AM to 5:00 PM	Day Rate Period					Night Rate & Weekend Rate Period	
(RT) 5:00 PM to 11:00 PM	Evening Rate Period						Eve. Rate
(RT) 11:00 PM to 8:00 AM	Night Rate & Weekend Rate Period						

B. The time of day at the location of the calling service point governs.

CANCELLED

Missouri Public

JUL 15 2004

74 R S 16

Public Service Commission
MISSOURI

FILED APR 02 2002

Service Commission

Issued: March 26, 2002

Effective: April 2, 2002

By JAN NEWTON, President-Missouri
Southwestern Bell Telephone, L.P., d/b/a Southwestern Bell Telephone Company
St. Louis, Missouri

No supplement to this tariff will be issued except for the purpose of canceling this tariff.

Long Distance Message
Telecommunications Service Tariff
5th Revised Sheet 16
Replacing 4th Revised Sheet 16

LONG DISTANCE MESSAGE TELECOMMUNICATIONS SERVICE

RECEIVED

1.4 TWO-POINT SERVICE

SEP 30 1996

1.4.1 Classes of Service

(RT) (AT)
(RT)
(AT)

Service is offered on a Dial Station-to-Station and Person-to-Person basis. Day, Evening, Night and Weekend rates apply to all classes of service. Discounts, as specified in Paragraph 1.4.1, A., following, do not apply to Operator service charges.

MISSOURI
Public Service Commission

A. All Classes of Service.

	Mon.	Tue.	Wed.	Thu.	Fri.	Sat.	Sun.
8:00 AM to 5:00 PM	Day Rate Period Full Rate						
5:00 PM to 11:00 PM	Evening Rate Period 20% Discount						Eve. Rate 20%
11:00 PM to 8:00 AM	Night Rate & Weekend Rate Period 35% Discount						

B. The time of day at the location of the calling service point governs.

CANCELLED

APR 02 2002
Public Service Commission
MISSOURI

Issued: SEP 30 1996

Effective: ~~SEP 30 1996~~

By KAREN E. JENNINGS, President-Missouri
Southwestern Bell Telephone Company
St. Louis, Missouri

DEC 7 1996
FILED

DEC 7 1996

No supplement to this tariff will be issued except for the purpose of canceling this tariff.

Long Distance Message Telecommunications Service Tariff
4th Revised Sheet 16
Replacing 3rd Revised Sheet 16

LONG DISTANCE MESSAGE TELECOMMUNICATIONS SERVICE

RECEIVED

JAN 22 1991

1.4 TWO-POINT SERVICE

1.4.1 Classes of Service

MISSOURI

Public Service Commission

(CT)
(AT)
|
(AT)

Service is offered on a Dial Station-to-Station, Fully-Automated Calling Card Station-to-Station, Semi-Automated Calling Card Station-to-Station, Fully-Automated Station-to-Station, Semi-Automated Station-to-Station, Operator Station-to-Station, Semi-Automated Person-to-Person or on an Operator Person-to-Person basis. Day, Evening, Night and Weekend rates apply to all classes of service. Discounts, as specified in Paragraph 1.4.1, A., following, do not apply to service charges.

A. All Classes of Service

	Mon.	Tue.	Wed.	Thu.	Fri.	Sat.	Sun.	
8:00 AM to 5:00 PM	Day Rate Period Full Rate							
5:00 PM to 11:00 PM	Evening Rate Period 20% Discount							Eve. Rate 20%
11:00 PM to 8:00 AM	Night Rate & Weekend Rate Period 35% Discount							

B. The time of day at the location of the calling service point governs.

CANCELLED

DEC 7 1995
BY 5th P.S. #16
Public Service Commission
MISSOURI

Issued: JAN 22 1991

Effective: ~~MAR 13 1991~~
JAN 13 1992

By R. D. BARRON, President-Missouri
Southwestern Bell Telephone Company
St. Louis, Missouri

JAN 13 1992

91-278

PUBLIC SERVICE COMMISSION

FILED

No supplement to this tariff will be issued except for the purpose of canceling this tariff.

Long Distance Message Telecommunications Service Tariff
 3rd Revised Sheet 16
 Replacing 2nd Revised Sheet 16

LONG DISTANCE MESSAGE TELECOMMUNICATIONS SERVICE DEC 29 1983

MISSOURI
 Public Service Commission

1.4 TWO-POINT SERVICE

1.4.1 Classes of Service

(CT) Service is offered on a Dial Station-to-Station, Dial Calling Card Station-to-Station, Operator Station-to-Station or on a Person-to-Person basis. Day, Evening, Night and Weekend rates apply to all classes of service. Discounts, as specified in 1.4.1, A. do not apply to service charges.

A. All Classes of Service

	Mon.	Tue.	Wed.	Thu.	Fri.	Sat.	Sun.
8:00 AM to 5:00 PM	Day Rate Period Full Rate						
5:00 PM to 11:00 PM	Evening Rate Period 20% Discount						Eve. Rate 20%
11:00 PM to 8:00 AM	Night Rate & Weekend Rate Period 35% Discount						

(CT) B. The time of day at the location of the calling service point governs.

CANCELLED

JAN 13 1992

BY 4th R.S. #16

Public Service Commission
 MISSOURI

FILED
 JAN - 1 1984
 83 - 253
 Public Service Commission

Issued: DEC 29 1983

Effective: JAN 01 1984

By R. D. BARRON, Vice President-Missouri
 Southwestern Bell Telephone Company
 St. Louis, Missouri

No supplement to this tariff will be issued except for the purpose of canceling this tariff.

Long Distance Message
Telecommunications Service Tariff
2nd Revised Sheet 16
Replacing 1st Revised Sheet 16

LONG DISTANCE MESSAGE TELECOMMUNICATIONS SERVICE

RECEIVED

DEC 7 1981

1.4 TWO-POINT SERVICE

(CT) 1.4.1 Classes of Service

Service is offered on a Dial Station-to-Station, Dial Credit Card Station-to-Station, Operator Station-to-Station or on a Person-to-Person basis. Commission Day, Evening, Night and Weekend rates apply to all classes of service. Discounts, as specified in 1.4.1 A. do not apply to service charges.

(CP) A. All Classes of Service

	Mon.	Tue.	Wed.	Thu.	Fri.	Sat.	Sun.
8:00 AM to 5:00 PM	Day Rate Period Full Rate						
5:00 PM to 11:00 PM	Evening Rate Period 20% Discount						Eve. Rate 20%
11:00 PM to 8:00 AM	Night Rate & Weekend Rate Period 35% Discount						

(RT)

(AT) B. The time of day at the location of the calling station governs.

CANCELLED

JAN - 1 1984
BY 3rd RS 16
PUBLIC SERVICE COMMISSION
OF MISSOURI

Issued:

DEC 07 1981

Effective:

BY R. R. SHOCKLEY, Vice President-Missouri
Southwestern Bell Telephone Company
St. Louis, Missouri

DEC 09 1981
FILED
DEC - 9 1981
81 - 208
Public Service Commission

No supplement to this tariff will be issued except for the purpose of canceling this tariff.

Long Distance Message Telecommunications Service Tariff
1st Revised Sheet 16
Replacing Original Sheet 16

LONG DISTANCE MESSAGE TELECOMMUNICATIONS SERVICE

RECEIVED
MAY 28 1975
MISSOURI
PUBLIC SERVICE COMMISSION

1.4 TWO-POINT SERVICE

1.4.1 Classes of Service

Service is offered on a Dial Station-to-Station, Operator Station-to-Station or on Person-to-Station or Person-to-Station basis. Day, Evening, Night and Weekend rates apply to Dial Station-to-Station and All Days-All Hours rates apply to Operator Station-to-Station and Person-to-Station service as follows:

CANCELLED
DEC - 9 1981
BY 2 RS 16
PUBLIC SERVICE COMMISSION
OF MISSOURI

A. Dial Station-to-Station

(CT)

	Mon.	Tue.	Wed.	Thu.	Fri.	Sat.	Sun.
8:00 AM to 5:00 PM	Day Rate Period Full Rate						
5:00 PM to 11:00 PM	Evening Rate Period 20% Discount						Eve. Rate 20%
11:00 PM to 8:00 AM	Night Rate & Weekend Rate Period 35% Discount						

(CT)

B. Operator Station-to-Station and Person-to-Station

	Mon.	Tue.	Wed.	Thu.	Fri.	Sat.	Sun.
8:00 AM to 8:00 AM	All Days-All Hours Rate						

C. The time (at the calling station) at which connection is established governs.

FILED
JUN 4 1975
Case # 17898
PUBLIC SERVICE COMMISSION

Issued: May 30, 1975

Effective: June 4, 1975

BY R. R. SHOCKLEY, Vice President-Missouri
Southwestern Bell Telephone Company
St. Louis, Missouri

614

No supplement to this tariff will be issued except for the purpose of canceling this tariff.

LONG DISTANCE MESSAGE TELECOMMUNICATIONS SERVICE

RECEIVED
APR 26 1973
MISSOURI
Public Service Commission

1.4 TWO-POINT SERVICE

1.4.1 Classes of Service

Service is offered on a Dial Station-to-Station, Operator Station-to-Station or on a Person-to-Person basis. Day, Evening, Night and Weekend rates apply to Dial Station-to-Station service and All Days-All Hours rates apply to Operator Station-to-Station and Person-to-Person service as follows:

A. Dial Station-to-Station

	MON.	TUES.	WED.	THURS.	FRI.	SAT.	SUN.
8:00 AM TO 5:00 PM	DAY RATE					WEEKEND RATE	
5:00 PM TO 11:00 PM	EVENING RATE					EVL. RATE	
11:00 PM TO 8:00 AM	NIGHT RATE						

B. Operator Station-to-Station and Person-to-Person

	MON.	TUES.	WED.	THURS.	FRI.	SAT.	SUN.
8:00 AM TO 8:00 AM	ALL DAYS-ALL HOURS RATE						

C. The time (at the calling station) at which connection is established governs.

CANCELLED

JUN 4 1975

BY lot R.S. 16

PUBLIC SERVICE COMMISSION

OF MISSOURI

FILED
JUN 1 1973
Public Service Commission

Issued: MAY 1 1973

Effective: JUN 1 1973

BY R. R. SHOCKLEY, Vice President, Missouri-Illinois Southwestern Bell Telephone Company St. Louis, Missouri

No Supplement to this tariff will be issued except for the purpose of canceling this tariff.

Long Distance Message
Telecommunications Service Tariff
Original Sheet 16.01

LONG DISTANCE MESSAGE TELECOMMUNICATIONS SERVICE

1.4 TWO-POINT SERVICE

1.4.1 Classes of Service (continued)

C. Business Class of Service

	MON	TUE	WED	THU	FRI	SAT	SUN
7:00 AM to 7:00 PM	Day Rate Period					Night Rate & Weekend Rate Period	
7:00 PM to 7:00 AM	Evening Rate Period						

D. The time of day at the location of the calling service point governs.

Issued: July 2, 2004

Effective: July 15, 2004

By CINDY BRINKLEY, President-SBC Missouri
Southwestern Bell Telephone, L.P., d/b/a SBC Missouri
St. Louis, Missouri

No supplement to this tariff will be issued except for the purpose of canceling this tariff.

Long Distance Message
Telecommunications Service Tariff
6th Revised Sheet 17
Replacing 5th Revised Sheet 17

RECEIVED

LONG DISTANCE MESSAGE TELECOMMUNICATIONS SERVICE

NOV 21 1997

1.4 TWO-POINT SERVICE-(Continued)

1.4.2 Station-to-Station Service

MO. PUBLIC SERVICE COM.

A. The term "Station-to-Station" denotes that service where the person originating the call:

- dials the telephone number desired or
- gives to the Telephone Company operator the telephone number of the desired service point, Mobile Telephone Service connecting circuit, PBX or PBX service point which is reached directly, rather than through a PBX attendant, or gives only the name and address under which the number of the desired service point, Mobile Telephone Service connecting circuit, or PBX is listed, and does not specify a particular person to be reached, nor a particular mobile service point to be reached through a Mobile Telephone Service attendant, nor a particular service point, department or office to be reached through a PBX attendant.

B. Station-to-Station services are offered as follows:

1. Dial Station-to-Station

"Dial Station-to-Station" is that Station-to-Station service where the person originating the call from other than a pay telephone dials the telephone number desired and the call is completed without the assistance of a Telephone Company operator, and the call is not billed to a number other than the originating telephone number. The dial station-to-station rate also applies in the following situations: 1) when an operator records the originating telephone number where no automatic recording equipment is available; 2) when an operator records a special identification number, issued by the Telephone Company for its billing purposes to students who reside at dormitories of colleges or universities equipped for Dormitory Centrex or PBX Service or equipped with a customer-provided PBX equipped with Direct Inward Dial (DID) and Identified Outward Dial (IOD) Service, for a call placed from a Dormitory Centrex or PBX service point; 3) when a call is forwarded by call forwarding equipment; 4) when an operator reaches the called telephone number where service components are not available for dial completion; 5) when an operator places a Sent-Paid call for a calling party who identifies himself as being disabled and unable to dial the call because of his handicap; 6) when an operator re-establishes a call which has been interrupted due to a problem on the network after the called number has been reached; and 7) when an operator places a call for the calling party who declares that he has attempted to complete the call but has been unable to do so due to technical difficulties.

(CT)

DEC 24 1997

MISSOURI
Public Service Commission

Issued: NOV 24 1997

Effective: DEC 24 1997

No supplement to this tariff will be issued except for the purpose of canceling this tariff.

Long Distance Message Telecommunications Service Tariff 5th Revised Sheet 17 Replacing 4th Revised Sheet 17

LONG DISTANCE MESSAGE TELECOMMUNICATIONS SERVICE

RECEIVED

1.4 TWO-POINT SERVICE- (Continued)

SEP 30 1996

1.4.2 Station-to-Station Service

A. The term "Station-to-Station" denotes that service where the person originating the call:

MISSOURI Public Service Commission

- dials the telephone number desired or
- gives to the Telephone Company operator the telephone number of the desired service point, Mobile Telephone Service connecting circuit, PBX or PBX service point which is reached directly, rather than through a PBX attendant, or gives only the name and address under which the number of the desired service point, Mobile Telephone Service connecting circuit, or PBX is listed, and does not specify a particular person to be reached, nor a particular mobile service point to be reached through a Mobile Telephone Service attendant, nor a particular service point, department or office to be reached through a PBX attendant.

(RT) B. Station-to-Station services are offered as follows:

DEC 24 1997

1. Dial Station-to-Station

By Letn RS #17

Public Service Commission MISSOURI

"Dial Station-to-Station" is that Station-to-Station service where the person originating the call from other than a public or semi-public coin telephone dials the telephone number desired and the call is completed without the assistance of a Telephone Company operator, and the call is not billed to a number other than the originating telephone number. The dial station-to-station rate also applies in the following situations: 1) when an operator records the originating telephone number where no automatic recording equipment is available; 2) when an operator records a special identification number, issued by the Telephone Company for its billing purposes to students who reside at dormitories of colleges or universities equipped for Dormitory Centrex or PBX Service or equipped with a customer-provided PBX equipped with Direct Inward Dial (DID) and Identified Outward Dial (IOD) Service, for a call placed from a Dormitory Centrex or PBX service point; 3) when a call is forwarded by call forwarding equipment; 4) when an operator reaches the called telephone number where service components are not available for dial completion; 5) when an operator places a Sent-Paid call for a calling party who identifies himself as being disabled and unable to dial the call because of his handicap; 6) when an operator re-establishes a call which has been interrupted due to a problem on the network after the called number has been reached; and 7) when an operator places a call for the calling party who declares that he has attempted to complete the call but has been unable to do so due to technical difficulties.

(AT)
(AT)

(AT)
(AT)
(AT)

(CT)
(AT)

(AT)
(AT)

Issued:

SEP 30 1996

Effective:

~~OCT 20 1996~~

By KAREN E. JENNINGS, President-Missouri Southwestern Bell Telephone Company St. Louis, Missouri

DEC 7 1997

FILED

DEC 7 1996

No supplement to this tariff will be issued except for the purpose of canceling this tariff.

Long Distance Message Telecommunications Service Tariff 4th Revised Sheet 17 Replacing 3rd Revised Sheet 17

LONG DISTANCE MESSAGE TELECOMMUNICATIONS SERVICE RECEIVED

1.4 TWO-POINT SERVICE--(Continued)

JAN 22 1991

1.4.2 Station-to-Station Service

MISSOURI

A. The term "Station-to-Station" denotes that service where the person originating the call:

- dials the telephone number desired or
- gives to the Telephone Company operator the telephone number of the desired service point, Mobile Telephone Service connecting circuit, PBX or PBX service point which is reached directly, rather than through a PBX attendant, or gives only the name and address under which the number of the desired service point, Mobile Telephone Service connecting circuit, or PBX is listed, and does not specify a particular person to be reached, nor a particular mobile service point to be reached through a Mobile Telephone Service attendant, nor a particular service point, department or office to be reached through a PBX attendant.

CANCELLED

(CT) B. Six classes of Station-to-Station services are offered as follows: 7 1995

(AT) 1. Dial Station-to-Station

"Dial Station-to-Station" is that Station-to-Station service where the person originating the call from other than a public or semi-public coin telephone dials the telephone number desired and the call is completed without the assistance of a Telephone Company operator, and the call is not billed to a number other than the originating telephone number. The dial station-to-station rate also applies in the following situations: when an operator records the originating telephone number where no automatic recording equipment is available; when an operator records a special identification number, issued by the Telephone Company for its billing purposes to students who reside at dormitories of colleges or universities equipped for Dormitory Centrex or PBX Service or equipped with a customer-provided PBX equipped with Direct Inward Dial (DID) and Identified Outward Dial (IOD) Service, for a call placed from a Dormitory Centrex or PBX service point; when a call is forwarded by call forwarding equipment; when an operator reaches the called telephone number where service components are not available for dial completion; when an operator places a Sent-Paid call for a calling party who identifies himself as being handicapped and unable to dial the call because of his handicap; and when an operator re-establishes a call which has been interrupted due to a problem on the network after the called number has been reached.

DEC 7 1995 #17 BY 5th R.S. PUBLIC SERVICE COMMISSION

(AT) (AT)

(AT)

(AT)

Issued: JAN 22 1991

Effective: JAN 13 1992

By R. D. BARRON, President-Missouri Southwestern Bell Telephone Company St. Louis, Missouri

JAN 13 1992 91-278

PUBLIC SERVICE COMMISSION

FILED

No supplement to this tariff will be issued except for the purpose of canceling this tariff.

Long Distance Message Telecommunications Service Tariff 3rd Revised Sheet 17 Replacing 2nd Revised Sheet 17

LONG DISTANCE MESSAGE TELECOMMUNICATIONS SERVICE

DEC 29 1983

1.4 TWO-POINT SERVICE-(Continued)

CANCELLED

MISSOURI Public Service Commission

1.4.2 Station-to-Station Service

JAN 13 1992

A. The term "Station-to-Station" denotes that service where the person originating the call:

Public Service Commission MISSOURI

- dials the telephone number desired or
- gives to the Telephone Company operator the telephone number of the desired service point, Mobile Telephone Service connecting circuit, PBX or PBX service point which is reached directly, rather than through a PBX attendant, or gives only the name and address under which the number of the desired service point, Mobile Telephone Service connecting circuit or PBX is listed, and does not specify a particular person to be reached, nor a particular mobile service point to be reached through a Mobile Telephone Service attendant, nor a particular service point, department or office to be reached through a PBX attendant.

(CT)

B. Three classes of Station-to-Station services are offered as follows:

"Dial Station-to-Station" is that Station-to-Station service where the person originating the call from other than a public or semi-public coin telephone dials the telephone number desired and the call is completed without the assistance of a Telephone Company operator, and the call is not billed to a number other than the originating number except: when an operator records the originating telephone number where no automatic recording equipment is available; when an operator records a special identification number, issued by the Telephone Company for its billing purposes to students who reside at dormitories of colleges or universities equipped for Dormitory Centrex or PBX Service or equipped with a customer-provided PBX equipped with Direct Inward Dial (DID) and Identified Outward Dial (IOD) Service, for a call placed from a Dormitory Centrex or PBX service point; for a call forwarded by call forwarding equipment; when an operator reaches the called telephone number where service components are not available for dial completion; when an operator places a call for a calling party who identifies himself as being handicapped and unable to dial the call because of his handicap; and when an operator re-establishes a call which has been interrupted after the called number has been reached, then the Dial Station-to-Station rate shall apply.

(CP)

FILED JAN - 1 1984 83 - 253 Public Service Commission

Issued: DEC 29 1983

Effective: JAN 01 1984

By R. D. BARRON, Vice President-Missouri Southwestern Bell Telephone Company St. Louis, Missouri

No supplement to this tariff will be issued except for the purpose of canceling this tariff.

Long Distance Message Telecommunications Service Tariff 2nd Revised Sheet 17 Replacing 1st Revised Sheet 17

LONG DISTANCE MESSAGE TELECOMMUNICATIONS SERVICE

1.4 TWO-POINT SERVICE-(Continued)

1.4.2 Station-to-Station Service

A. The term "Station-to-Station" denotes that service where the person originating the call

- dials the telephone number desired or

- gives to the Telephone Company operator the telephone number of the desired station, Miscellaneous Common Carrier connecting circuit, PBX or PBX station which is reached directly, rather than through a PBX attendant, or gives only the name and address under which the number of the desired station, Miscellaneous Common Carrier connecting circuit or PBX is listed, and does not specify a particular person to be reached, nor a particular mobile station to be reached through a Miscellaneous Common Carrier attendant, nor a particular station, department or office to be reached through a PBX attendant.

(CT) B. Three classes of Station-to-Station services are offered as follows:

"Dial Station-to-Station" is that Station-to-Station service where the person originating the call from other than a public or semi-public coin telephone dials the telephone number desired and the call is completed without the assistance of a Telephone Company operator, and the call is not billed to a number other than the originating number except: when an operator records the originating telephone number where no automatic recording equipment is available; when an operator records a special identification number, issued by the Telephone Company for its billing purposes to students who reside at dormitories of colleges or universities equipped for Dormitory Centrex or PBX Service or equipped with a Telephone Company or customer-provided PBX equipped with Direct Inward Dial (DID) and Identified Outward Dial (IOD) Service, for a call placed from a Dormitory Centrex or PBX Station; for a call forwarded by call forwarding equipment; when an operator reaches the called telephone number where facilities are not available for dial completion; when an operator places a call for a calling party who identifies himself as being handicapped and unable to dial the call because of his handicap; and when an operator re-establishes a call which has been interrupted after the called number has been reached, then the Dial Station-to-Station rate shall apply.

RECEIVED
DEC 7 1981
MISSOURI
Public Service Commission

CANCELLED
JAN - 1 1984
BY 3rd RS 17
PUBLIC SERVICE COMMISSION
OF MISSOURI

Issued:

DEC 07 1981

Effective:

BY R. R. SHOCKLEY, Vice President-Missouri
Southwestern Bell Telephone Company
St. Louis, Missouri

DEC 09 1981
FILED
DEC - 9 1981
81 - 208
Public Service Commission

No supplement to this tariff will be issued except for the purpose of canceling this tariff.

Long Distance Message
Telecommunications Service Tariff
1st Revised Sheet 17
Replacing Original Sheet 17

LONG DISTANCE MESSAGE TELECOMMUNICATIONS SERVICE

1.4 TWO-POINT SERVICE-(Continued)

1.4.2 Station-to-Station Service

A. The term "Station-to-Station" denotes that service where the person originating the call

- dials the telephone number desired, or

- gives to the Telephone Company operator the telephone number of the desired station, Miscellaneous Common Carrier connecting circuit, PBX, or PBX station which is reached directly rather than through a PBX attendant, or gives only the name and address under which the number of the desired station, Miscellaneous Common Carrier connecting circuit or PBX is listed, and does not specify a particular person to be reached, nor a particular mobile station to be reached through a Miscellaneous Common Carrier attendant, nor a particular station, department or office to be reached through a PBX attendant.

RECEIVED
JUN 09 1980
MISSOURI
Public Service Commission

(AT) B. Two classes of Station-to-Station services are offered as follows:

"Dial Station-to-Station" is that Station-to-Station service where the person originating the call from other than a public or semi-public coin telephone dials the telephone number desired and the call is completed without the assistance of a Telephone Company operator, except: when an operator records the originating telephone number where no automatic recording equipment is available; when an operator records a special identification number, issued by the Telephone Company for its billing purposes to students who reside at dormitories of colleges or universities equipped for Dormitory Centrex or PBX Service or equipped with a Telephone Company or customer-provided PBX equipped with Direct Inward Dial (DID) and Identified Outward Dial (IOD) Service, for a call placed from a Dormitory Centrex or PBX Station; for a call forwarded by call forwarding equipment; when an operator reaches the called telephone number where facilities are not available for dial completion; when an operator places a call for a calling party who identifies himself as being handicapped and unable to dial the call because of his handicap; and when an operator reestablishes a call which has been interrupted after the called number has been reached, then the Dial Station-to-Station rate shall apply.

CANCELLED
DEC - 9 1981
BY *RS* 17
PUBLIC SERVICE COMMISSION
OF MISSOURI

JUL 20 1980

Issued: JUN 20 1980

Effective: JUL 20 1980

BY R. R. SHOCKLEY, Vice President-Missouri
Southwestern Bell Telephone Company
St. Louis, Missouri

No supplement to this tariff will be issued except for the purpose of canceling this tariff.

Long Distance Message Telecommunications Service Tariff Original Sheet 17

LONG DISTANCE MESSAGE TELECOMMUNICATIONS SERVICE

RECEIVED
APR 26 1973
MISSOURI
Public Service Commission

1.4 TWO-POINT SERVICE-(Continued)

1.4.2 Station-to-Station Service

- A. The term "Station-to-Station" denotes that service where the person originating the call
 - dials the telephone number desired, or
 - gives to the Telephone Company operator the telephone number of the desired station, Miscellaneous Common Carrier connecting circuit, PBX, or PBX station which is reached directly rather than through a PBX attendant, or gives only the name and address under which the number of the desired station, Miscellaneous Common Carrier connecting circuit or PBX is listed, and does not specify a particular person to be reached, nor a particular mobile station to be reached through a Miscellaneous Common Carrier attendant, nor a particular station, department or office to be reached through a PBX attendant.
- B. Two classes of Station-to-Station services are offered as follows:

"Dial Station-to-Station" is that Station-to-Station service where the person originating the call from other than a public or semi-public coin telephone dials the telephone number desired and the call is completed without the assistance of a Telephone Company operator, except: when an operator records the originating telephone number where no automatic recording equipment is available; when an operator records a special identification number, issued by the Telephone Company for its billing purposes to students who reside at dormitories of colleges or universities equipped for Dormitory Centrex Service, for a call placed from a Dormitory Centrex station; when an operator reaches the called telephone number where facilities are not available for dial completion; when an operator places a call for a calling party who identifies himself as being handicapped and unable to dial the call because of his handicap; and when an operator reestablishes a call which has been interrupted after the called number has been reached.

CANCELLED

FILED
JUN 1 1973
Public Service Commission

Issued: MAY 1 1973 BY 1st R.S. # 17 PUBLIC SERVICE COMMISSION OF MISSOURI

Effective: JUN 1 1973

BY R. R. SHOCKLEY, Vice President, Missouri-Illinois Southwestern Bell Telephone Company St. Louis, Missouri

No Supplement to this tariff will be issued except for the purpose of canceling this tariff.

Long Distance Message Telecommunications Service Tariff
6th Revised Sheet 18
Replacing 5th Revised Sheet 18

LONG DISTANCE MESSAGE TELECOMMUNICATIONS SERVICE

1.4 TWO-POINT SERVICE-(Continued)

1.4.2 Station-to-Station Service-(Continued)

B. Station-to-Station services are offered as follows:-(Continued)

2. Operator Station-to-Station

Station-to Station calls may be dialed direct, or completed with the assistance of a Telephone Company operator. If the customer utilizes an operator, there are three levels of Operator Assistance service. They are:

- a. Non-Automated: Non-automated service is where the person originating the call dials zero or a special access number (e.g., an 800/888 number), and the operator dials the number and collects billing information for completion of the call. Non-automated service includes service that is not fully automated or semi-automated. When an operator re-establishes a non-automated call which has been interrupted due to a problem on the network after the called number has been reached, no additional operator service charge shall apply.
- b. Semi-Automated: Semi-automated service is where the person originating the call dials zero or a special access number (e.g., an 800/888 number), (or 1+ calls from pay telephones), then dials the desired telephone number, and the operator collects billing information for completion of the call. When an operator re-establishes a semi-automated call which has been interrupted due to a problem on the network after the called number has been reached, no additional operator service charge shall apply.
- c. Fully Automated: Fully automated service applies to calling card calls where the person originating the call dials zero, then dials the desired telephone number, and then dials the calling card number and the call is completed without the assistance of an operator. This service also includes the situations described under "Dial Station-to-Station" in 1.4.2 B. 1. above.

(CT)
|
(CT)

Issued: June 28, 2005

Effective: July 28, 2005

By CINDY BRINKLEY, President-SBC Missouri
Southwestern Bell Telephone, L.P., d/b/a SBC Missouri
St. Louis, Missouri

No supplement to this tariff will be issued except for the purpose of canceling this tariff.

Long Distance Message
Telecommunications Service Tariff
5th Revised Sheet 18
Replacing 4th Revised Sheet 18

LONG DISTANCE MESSAGE TELECOMMUNICATIONS SERVICE

RECEIVED

1.4 TWO-POINT SERVICE-(Continued)

JAN 26 1998

1.4.2 Station-to-Station Service-(Continued)

**MISSOURI
Public Service Commission**

B. Station-to-Station services are offered as follows:-(Continued)

2. Operator Station-to-Station

Station-to Station calls may be dialed direct, or completed with the assistance of a Telephone Company operator. If the customer utilizes an operator, there are three levels of Operator Assistance service. They are:

(AT)

a. Non-Automated: Non-automated service is where the person originating the call dials zero or a special access number (e.g., an 800/888 number), and the operator dials the number and collects billing information for completion of the call. Non-automated service includes service that is not fully automated or semi-automated. When an operator re-establishes a non-automated call which has been interrupted due to a problem on the network after the called number has been reached, no additional operator service charge shall apply.

(AT)

b. Semi-Automated: Semi-automated service is where the person originating the call dials zero or a special access number (e.g., an 800/888 number), (or 1+ calls from pay telephones), then dials the desired telephone number, and the operator collects billing information for completion of the call. When an operator re-establishes a semi-automated call which has been interrupted due to a problem on the network after the called number has been reached, no additional operator service charge shall apply.

(RT)

(AT)

c. Fully Automated: Fully automated service is where the person originating the call dials zero or a special access number (e.g., an 800/888 number), then dials the desired telephone number, and then dials the service selection codes as instructed by the automated billing equipment, and the call is completed without the assistance of an operator. This service also includes the situations described under "Dial Station-to-Station" in 1.4.2 B. 1. above.

CANCELLED

FILED

JUL 28 2005

FEB 25 1998

By *Wth RS: 18*
**Public Service Commission
MISSOURI**

**MISSOURI
Public Service Commission**

Issued: JAN 26 1998

Effective: FEB 25 1998

By PRISCILLA HILL-ARDOIN, President-Missouri
Southwestern Bell Telephone Company
St. Louis, Missouri

No supplement to this tariff will be issued except for the purpose of canceling this tariff.

Long Distance Message Telecommunications Service Tariff 4th Revised Sheet 18 Replacing 3rd Revised Sheet 18

LONG DISTANCE MESSAGE TELECOMMUNICATIONS SERVICE

RECEIVED

1.4 TWO-POINT SERVICE- (Continued)

1.4.2 Station-to-Station Service- (Continued)

SEP 30 1996

(RT) B. Station-to-Station services are offered as follows:- (Continued)

MISSOURI Public Service Commission

(RT)

CANCELLED

FEB 25 1998

By 54125#18
Public Service Commission
MISSOURI

(RT)

(AT)

2. Operator Station-to-Station

Station-to Station calls may be dialed direct, or completed with the assistance of a Telephone Company operator. If the customer utilizes an operator, there are three levels of Operator Assistance service. They are:

- a. Non-Automated: Non-automated service is where the person originating the call dials zero and the operator dials the number and collects billing information for completion of the call. Non-automated service includes service that is not fully automated or semi-automated. When an operator re-establishes a non-automated call which has been interrupted due to a problem on the network after the called number has been reached, no additional operator service charge shall apply.
- b. Semi-Automated: Semi-automated service is where the person originating the call dials zero (or 1+ calls from pay telephones), then dials the desired telephone number, and the operator collects billing information for completion of the call. When an operator re-establishes a semi-automated call which has been interrupted due to a problem on the network after the called number has been reached, no additional operator service charge shall apply.
- c. Fully Automated: Fully automated service is where the person originating the calls dials zero, then dials the desired telephone number, and then dials the service selection codes as instructed by the automated billing equipment, and the call is completed without the assistance of an operator. This service also includes the situations described under "Dial Station-to-Station" in 1.4.2 B. 1. above.

(AT)

Issued:

SEP 30 1996

By KAREN E. JENNINGS, President-Missouri
Southwestern Bell Telephone Company
St. Louis, Missouri

Effective:

~~SEP 30 1996~~

DEC 7 1996 FILED

DEC 7 1996

No supplement to this tariff will be issued except for the purpose of canceling this tariff.

Long Distance Message Telecommunications Service Tariff 3rd Revised Sheet 18 Replacing 2nd Revised Sheet 18

LONG DISTANCE MESSAGE TELECOMMUNICATIONS SERVICE

RECEIVED

JAN 22 1991

1.4 TWO-POINT SERVICE--(Continued)

1.4.2 Station-to-Station Service--(Continued)

MISSOURI Public Service Commission

(CT) B. Six classes of Station-to-Station services are offered as follows:- (Continued)

(AT) 2. Fully-Automated Calling Card Station-to-Station

(CT) "Fully-Automated Calling Card Station-to-Station" is that station-to-station service where the person originating the call, dials zero, then the telephone number desired, then service selection codes and/or a telecommunications company calling card number as instructed by automated billing equipment, and the call is completed without the assistance of a Telephone Company operator and is billed to a telecommunications company calling card. The Fully-Automated Calling Card Station-to-Station rate also applies in the following situations: when a Telephone Company operator records the telecommunications company calling card when automated billing equipment is not available; when a Telephone Company operator reaches the called telephone number and records the telecommunications company calling card where service components are not available for dial completion; when a Telephone Company operator records the telecommunications company calling card where no automatic recording equipment is available; and when a Telephone Company operator places a calling card call for a calling party who identifies himself as being handicapped and unable to dial the call because of his handicap. This class of service involves no operator services except those necessary to complete the above described calls. When a Telephone Company operator re-establishes a fully-automated calling card call which has been interrupted due to a problem on the network after the called party has been reached, no additional operator service charge shall apply.

CANCELLED

DEC 7 1996 BY HTR R.S. #18 Public Service Commission MISSOURI

(MT)

(AT) 3. Semi-Automated Calling Card Station-to-Station

(AT) "Semi-Automated Calling Card Station-to-Station" is that station-to-station service where the person originating the call, dials zero, then the telephone number desired, and the call is completed with the assistance of a Telephone Company operator and is billed to a telecommunications company calling card. Semi-Automated Calling Card Station-to-Station includes that station-to-station service where the person originating the call does not dial a 0 prior to dialing the number desired from a public or semi-public telephone or from a telephone where the call is routed directly to a Telephone Company operator, and the call is billed to a telecommunications company calling card. When a Telephone Company operator re-establishes a semi-automated calling card call which has been interrupted due to a problem on the network after the called number has been reached, no additional operator service charge shall apply.

FILED

Issued:

JAN 22 1991

Effective: JAN 13 1992

By R. D. BARRON, President-Missouri Southwestern Bell Telephone Company St. Louis, Missouri

JAN 13 1992

91 - 278

PUBLIC SERVICE COMMISSION

No supplement to this tariff will be issued except for the purpose of canceling this tariff.

Long Distance Message Telecommunications Service Tariff
2nd Revised Sheet 18
Replacing 1st Revised Sheet 18

LONG DISTANCE MESSAGE TELECOMMUNICATIONS SERVICE

DEC 29 1983

MISSOURI
Public Service Commission

1.4 TWO-POINT SERVICE-(Continued)

1.4.2 Station-to-Station Service-(Continued)

B. Three classes of Station-to-Station services are offered as follows:-
(Continued)

(CT) "Dial Calling Card Station-to-Station" is that station-to-station service where the person originating the call, including from a public or semi-public telephone, dials zero, then the telephone number desired and the call is completed either with or without the assistance of a Telephone Company operator and is billed, where automatic billing equipment is available, to a Telephone Company calling card, except when an operator records the Telephone Company calling card where no automatic recording equipment is available; when a Telephone Company operator reaches the called telephone number and records the Telephone Company calling card where service components are not available for dial completion; when a Telephone Company operator places a calling card call for a calling party who identifies himself as being handicapped and unable to dial the call because of his handicap; and when a Telephone Company operator re-establishes a dial calling card call which has been interrupted after the called number has been reached. This class of service involves no other operator services except those necessary to complete the above described call.

(CT) "Operator Station-to-Station" is that station-to-station service other than Dial Station-to-Station and Dial Calling Card Station-to-Station. Operator Station-to-Station includes station-to-station service originating at a public or semi-public coin telephone, except for those public or semi-public telephone calls that are Dial Calling Card Station-to-Station as described above.

1.4.3 Person-to-Person Service

(CT) A. Person-to-Person Service is that service where the person originating the call specifies to the Telephone Company operator a particular person to be reached, a particular mobile service point to be reached through a Mobile Telephone Service attendant or a particular service point, department or office to be reached through a private branch exchange attendant.

CANCELLED

JAN 13 1992
BY 3rd R.S. #18
Public Service Commission
MISSOURI

FILED
JAN - 1 1984
83 - 253
Public Service Commission

Issued: DEC 29 1983

Effective: JAN 01 1984

By R. D. BARRON, Vice President-Missouri
Southwestern Bell Telephone Company
St. Louis, Missouri

No supplement to this tariff will be issued except for the purpose of canceling this tariff.

Long Distance Message Telecommunications Service Tariff 1st Revised Sheet 18 Replacing Original Sheet 18

LONG DISTANCE MESSAGE TELECOMMUNICATIONS SERVICE

RECEIVED

1.4 TWO-POINT SERVICE-(Continued)

1.4.2 Station-to-Station Service-(Continued)

DEC 7 1981

- (CT) B. Three classes of Station-to-Station services are offered as follows:-
(Continued)

MISSOURI Public Service Commission

"Dial Credit Card Station-to-Station" is that Station-to-Station service where the person originating the call, including from a public or semi-public telephone, dials zero, then the telephone number desired and the call is completed either with or without the assistance of a Telephone Company operator and is billed, where automatic billing equipment is available, to a Telephone Company credit card or Special Billing Number, except: when an operator records the Telephone Company credit card or Special Billing Number where no automatic recording equipment is available; when a Telephone Company operator reaches the called telephone number and records the Telephone Company credit card or Special Billing Number where facilities are not available for dial completion; when a Telephone Company operator places a credit card or Special Billing Number call for a calling party who identifies himself as being handicapped and unable to dial the call because of his handicap; and when a Telephone Company operator re-establishes a dial credit card or dial Special Billing Number call which has been interrupted after the called number has been reached. This class of service involves no other operator services except those necessary to complete the above described call.

"Operator Station-to-Station" is that Station-to-Station service other than Dial Station-to-Station and Dial Credit Card Station-to-Station. Operator Station-to-Station includes Station-to-Station service originating at a public or semi-public coin telephone, except for those public or semi-public telephone calls that are Dial Credit Card Station-to-Station as described above.

1.4.3 Person-to-Person Service

- A. Person-to-Person service is that service where the person originating the call specifies to the Telephone Company operator a particular person to be reached, a particular mobile station to be reached through a Miscellaneous Common Carrier attendant or a particular station, department or office to be reached through a private branch exchange attendant.

(MT)

CANCELLED

JAN - 1 1984
2nd RS 18

Issued:

DEC 07 1981

BY R. R. SHOCKLEY, Vice President-Missouri
Southwestern Bell Telephone Company
St. Louis, Missouri

BY PUBLIC SERVICE COMMISSION
Effective: MISSOURI

DEC 09 1981

DEC - 9 1981
81-208

Public Service Commission

No supplement to this tariff will be issued except for the purpose of canceling this tariff.

LONG DISTANCE MESSAGE TELECOMMUNICATIONS SERVICE

RECEIVED
APR 26 1973
MISSOURI
Public Service Commission

1.4 TWO-POINT SERVICE-(Continued)

1.4.2 Station-to-Station Service-(Continued)

B. Two classes of Station-to-Station services are offered as follows:-(Continued)

CANCELLED

"Operator Station-to-Station" is that Station-to-Station service other than Dial Station-to-Station. Operator Station-to-Station includes Station-to-Station service originating at a public or semi-public coin telephone.

DEC 9 1981

BY 1 25 18
PUBLIC SERVICE COMMISSION
OF MISSOURI

1.4.3 Person-to-Person Service

A. Person-to-Person service is that service where the person originating the call specifies to the Telephone Company operator a particular person to be reached, a particular mobile station to be reached through a Miscellaneous Common Carrier attendant, or a particular station, department or office to be reached through a private branch exchange attendant.

B. When, after the telephone, Miscellaneous Common Carrier mobile radio system, or private branch exchange system called has been reached and while the connection remains established, the person originating the call requests or agrees to talk to any person other than the person specified, or to any other person or mobile unit to be reached through a Miscellaneous Common Carrier attendant, or to any other station, department or office to be reached through a private branch exchange attendant, the classification of the call remains Person-to-Person.

C. When the person originating the call wishes arrangements made in advance with a particular party on station for the establishment of a connection at a specified time (appointment call), the call is classified as Person-to-Person.

FILED
JUN 1 1973
Public Service Commission

D. The Telephone Company does not undertake in connection with Person-to-Person service to bring to a telephone a called person who cannot be reached at a telephone in the Bell System. However, at the request of the calling party, the Telephone Company, when possible, will arrange on behalf of the calling party, for messenger service; that is a messenger or other means to notify the called party of the call. The Telephone Company shall be reimbursed

Issued: MAY 1 1973

Effective: JUN 1 1973

BY R. R. SHOCKLEY, Vice President, Missouri-Illinois
Southwestern Bell Telephone Company
St. Louis, Missouri

No supplement to this tariff will be issued except for the purpose of canceling this tariff.

Long Distance Message
Telecommunications Service Tariff
2nd Revised Sheet 18.01
Replacing 1st Revised Sheet 18.01
Replacing 1st Revised Sheet 18.02
Replacing 1st Revised Sheet 18.03

LONG DISTANCE MESSAGE TELECOMMUNICATIONS SERVICE

1.4 TWO-POINT SERVICE-(Continued)

1.4.3 Person-to-Person Service

A. Person-to-Person Service is that service where the person originating the call specifies to the Telephone Company operator a particular person to be reached, a particular mobile service point to be reached through a Mobile Telephone Service attendant, or a particular service point, department or office to be reached through a private branch exchange attendant.

B. There are two levels of Person-to-Person service. They are:

(AT) 1) Non-Automated: Non-automated service is where the person originating the call dials zero, or a special access number (e.g., an 800/888 number), and the operator dials the number and collects necessary information for completion of the call. Non-automated service includes service that is not semi-automated. When an operator re-establishes a non-automated call which has been interrupted due to a problem on the network after the called number has been reached, no additional operator service charge shall apply.

(AT) 2) Semi-Automated: Semi-automated service is where the person originating the call dials zero, or a special access number (e.g., an 800/888 number), then dials the desired telephone number, and the operator collects necessary information for completion of the call. When an operator re-establishes a semi-automated call which has been interrupted due to a problem on the network after the called number has been reached, no additional operator service charge shall apply. Semi-automated service also includes the situation when an operator places a call for a party who identifies himself as being disabled and unable to dial the call because of his disability.

Issued: Jan. 26, 1998

Effective: Feb. 25, 1998

By PRISCILLA HILL-ARDOIN, President-Missouri
Southwestern Bell Telephone Company
St. Louis, Missouri

No supplement to this tariff will be issued except for the purpose of canceling this tariff.

Long Distance Message Telecommunications Service Tariff 1st Revised Sheet 18.01 Replacing Original Sheet 18.01

LONG DISTANCE MESSAGE TELECOMMUNICATIONS SERVICE

RECEIVED

1.4 TWO-POINT SERVICE-(Continued)

SEP 30 1996

1.4.2 Station-to-Station Service-(Continued)

MISSOURI

(RT) B. Station-to-Station services are offered as follows:-(Continued) Public Service Commission

(RT)

CANCELLED

FEB 25 1998
By And RS #18.01
Public Service Commission
MISSOURI

(RT)

Issued: SEP 30 1996

Effective: ~~SEP 30 1996~~

By KAREN E. JENNINGS, President-Missouri
Southwestern Bell Telephone Company
St. Louis, Missouri

DEC 7 1996

FILED

DEC 7 1996

MO.PUBLICSERVICECOMM

No supplement to this tariff will be issued except for the purpose of canceling this tariff.

Long Distance Message Telecommunications Service Tariff Original Sheet 18.01

RECEIVED

LONG DISTANCE MESSAGE TELECOMMUNICATIONS SERVICE

JAN 22 1991

1.4 TWO-POINT SERVICE-(Continued)

1.4.2 Station-to-Station Service-(Continued)

MISSOURI Public Service Commission

(CT) B. Six classes of Station-to-Station services are offered as follows:- (Continued)

4. Fully-Automated Station-to-Station

"Fully-Automated Station-to-Station" is that station-to-station service, other than Fully-Automated Calling Card Station-to-Station, where the person originating the call, dials zero, then the telephone number desired, then service selection codes and/or billing information as instructed by automated billing equipment, and the call is completed without the assistance of a Telephone Company operator. The Fully-Automated Station-to-Station rate also applies in the following situations: when a Telephone Company operator reaches the called number and records the billing information where service components are not available for dial completion; when a Telephone Company operator records the billing information when automated billing equipment is not available; when a Telephone Company operator places a call which is neither Sent-Paid nor billed to a calling card for a calling party who identifies himself as being handicapped and unable to dial the call because of his handicap. This class of service involves no operator services except those necessary to complete the above described calls. When a Telephone Company operator re-establishes a fully-automated station-to-station call which has been interrupted due to a problem on the network after the called number has been reached no additional operator service charge shall apply.

5. Semi-Automated Station-to-Station

"Semi-Automated Station-to-Station" is that station-to-station service, other than Semi-Automated Calling Card Station-to-Station, where the person originating the call, dials zero, then the telephone number desired, and the call is completed with the assistance of a Telephone Company operator. Semi-Automated Station-to-Station includes that station-to-station service where the person originating the call does not dial the zero prior to dialing the number desired from a public or semi-public telephone or from a telephone where the call is routed directly to a Telephone Company operator, and the call is not billed to a telecommunications company calling card. When a Telephone Company operator re-establishes a semi-automated station-to-station call which has been interrupted due to a problem on the network after the called number has been reached, no additional operator service charge shall apply.

DEC 7 1996
BY 1st B.S. # 18.01
Public Service Commission
MISSOURI

Issued: JAN 22 1991

Effective: JAN 13 1992

By R. D. BARRON, President-Missouri Southwestern Bell Telephone Company St. Louis, Missouri

FILED

JAN 13 1992
91-278

PUBLIC SERVICE COMMISSION

No supplement to this tariff will be issued except for the purpose of canceling this tariff.

Long Distance Message Telecommunications Service Tariff 1st Revised Sheet 18.02 Replacing Original Sheet 18.02

LONG DISTANCE MESSAGE TELECOMMUNICATIONS SERVICE **RECEIVED**

SEP 30 1996

1.4 TWO-POINT SERVICE-(Continued)

1.4.2 Station-to-Station Service-(Continued)

(RT) B. Station-to-Station services are offered as follows:- (Continued) MISSOURI Public Service Commission

(RT)

(MT)

(MT)

(RT)

(RT)

CANCELLED

FEB 25 1998

By 2nd RS #18.01
Public Service Commission
MISSOURI

Issued: SEP 30 1996

Effective: ~~SEP 30 1996~~

By KAREN E. JENNINGS, President-Missouri
Southwestern Bell Telephone Company
St. Louis, Missouri

DEC 7 1996 **FILED**

DEC 7 1996

No supplement to this tariff will be issued except for the purpose of canceling this tariff.

Long Distance Message Telecommunications Service Tariff Original Sheet 18.02

RECEIVED

JAN 22 1991

LONG DISTANCE MESSAGE TELECOMMUNICATIONS SERVICE

1.4 TWO-POINT SERVICE--(Continued)

1.4.2 Station-to-Station Service--(Continued)

MISSOURI! Public Service Commission

(CT) B. Six classes of Station-to-Station services are offered as follows:- (Continued)

(AT) 6. Operator Station-to-Station

(MT) (AT) "Operator Station-to-Station" is that station-to-station service other than Dial Station-to-Station, Fully-Automated Calling Card Station-to-Station, Semi-Automated Calling Card Station-to-Station, Fully-Automated Station-to-Station and Semi-Automated Station-to-Station. Operator Station-to-Station includes Station-to-Station service originating at a public or semi-public coin telephone, except for those public or semi-public calls that are Fully-Automated Calling Card Station-to-Station, Semi-Automated Calling Card Station-to-Station, Fully-Automated Station-to-Station or Semi-Automated Station-to-Station as described above. When a Telephone Company operator re-establishes an Operator Station-to-Station call which has been interrupted due to a problem on the network after the called number has been reached, no additional operator service charge will apply.

1.4.3 Person-to-Person Service

A. Person-to-Person Service is that service where the person originating the call specifies to the Telephone Company operator a particular person to be reached, a particular mobile service point to be reached through a Mobile Telephone Service attendant, or a particular service department or office to be reached through a private branch exchange attendant.

(AT) B. Two classes of Person-to-Person services are offered as follows:

1. Semi-Automated Person-to-Person

"Semi-Automated Person-to-Person" is that person-to-person service where the person originating the call dials zero, then the telephone number desired, and the call is completed with the assistance of a Telephone Company operator. Semi-Automated Person-to-Person includes that person-to-person service where the person originating the call does not dial a zero prior to dialing the number desired from a public or semi-public telephone, or from a telephone where the call is routed directly to a telephone company operator. When a telephone company operator re-establishes a semi-automated person-to-person call which has been interrupted due to a problem on the network after the call party has been reached, no additional operator service charge shall apply.

DEC 7 1996 BY Let R.S. # 18.02 Public Service Commission MISSOURI

Issued:

JAN 22 1991

Effective:

JAN 13 1992

By R. D. Barron, President-Missouri Division Southwestern Bell Telephone Company St. Louis, Missouri

FILED

JAN 13 1992

91-278

PUBLIC SERVICE COMMISSION

No supplement to this tariff will be issued except for the purpose of canceling this tariff.

Long Distance Message Telecommunications Service Tariff 1st Revised Sheet 18.03 Replacing Original Sheet 18.03

RECEIVED

LONG DISTANCE MESSAGE TELECOMMUNICATIONS SERVICE

1.4 TWO-POINT SERVICE- (Continued)

SEP 30 1996

1.4.3 Person-to-Person Service

MISSOURI Public Service Commission

(MT) A. Person-to-Person Service is that service where the person originating the call specifies to the Telephone Company operator a particular person to be reached, a particular mobile service point to be reached through a Mobile Telephone Service attendant, or a particular service point, department or office to be reached through a private branch exchange attendant.

(AT) B. There are two levels of Person-to-Person service. They are:

1) Non-Automated: Non-automated service is where the person originating the call dials zero, and the operator dials the number and collects necessary information for completion of the call. Non-automated service includes service that is not semi-automated. When an operator re-establishes a non-automated call which has been interrupted due to a problem on the network after the called number has been reached, no additional operator service charge shall apply.

2) Semi-Automated: Semi-automated service is where the person originating the call dials zero, then dials the desired telephone number, and the operator collects necessary information for completion of the call. When an operator re-establishes a semi-automated call which has been interrupted due to a problem on the network after the called number has been reached, no additional operator service charge shall apply. Semi-automated service also includes the situation when an operator places a call for a party who identifies himself as being disabled and unable to dial the call because of his disability.

(AT)

(RT)

(RT)

CANCELLED

FEB 25 1993 By 2nd RS #18.01 Public Service Commission MISSOURI

Issued: SEP 30 1996

Effective: ~~_____~~ OCT 30 1996

By KAREN E. JENNINGS, President-Missouri Southwestern Bell Telephone Company St. Louis, Missouri

DEC. 7 FILED

DEC 7 1996

MO.PUBLICSERVICECOMM

No supplement to this tariff will be issued except for the purpose of canceling this tariff.

Long Distance Message
Telecommunications Service Tariff
Original Sheet 18.03

LONG DISTANCE MESSAGE TELECOMMUNICATIONS SERVICE

RECEIVED

JAN 22 1991

1.4 TWO-POINT SERVICE--(Continued)

1.4.3 Person-to-Person Service--(Continued)

MISSOURI
Public Service Commission

B. Two classes of Person-to-Person services are offered as follows:-
(Continued)

2. Operator Person-to-Person

"Operator Person-to-Person" is that person-to-person service other than Semi-Automated Person-to-Person. Operator Person-to-Person includes person-to-person service originating at a public or semi-public coin telephone, except for those public or semi-public calls that are Semi-Automated Person-to-Person, as described above. When a Telephone Company operator re-establishes an Operator Person-to-Person call which has been interrupted due to a problem on the network after the called party has been reached, no additional Operator service charge shall apply.

CANCELLED

DEC 7 1995
BY lat R.S. #18.03
Public Service Commission
MISSOURI

Issued: JAN 22 1991

Effective: ~~MAR 1 1991~~

JAN 13 1992

By R. D. Barron, President-Missouri
Southwestern Bell Telephone Company
St. Louis, Missouri

FILED

JAN 13 1992
91 - 278

PUBLIC SERVICE COMMISSION

No supplement to this tariff will be issued except for the purpose of canceling this tariff.

Long Distance Message
Telecommunications Service Tariff
5th Revised Sheet 19
Replacing 4th Revised Sheet 19

LONG DISTANCE MESSAGE TELECOMMUNICATIONS SERVICE

1.4 TWO-POINT SERVICE-(Continued)

1.4.3 Person-to-Person Service-(Continued)

- C. When, after the telephone, mobile radio system or private branch exchange system called has been reached and while the connection remains established, the person originating the call requests or agrees to talk to any person other than the person specified or to any other person or mobile unit to be reached through a Mobile Telephone Service attendant, or to any other service point, department or office to be reached through a private branch exchange attendant, the classification of the call remains Person-to-Person.
- D. When the person originating the call wishes arrangements made in advance with a particular party or service point for the establishment of a connection at a specified time (appointment call), the call is classified as Person-to-Person.
- E. The Telephone Company does not undertake in connection with Person-to-Person service to bring to a telephone a called person who cannot be reached at a telephone connected to the telecommunications network.

1.4.4 Reversal of Charges (Collect Calls)

- (RT) Charges for Station-to-Station and Person-to-Person telephone calls may, upon request, be reversed, that is, charged against the called telephone, provided the charges are acceptable at the called telephone.
- (RT) The regularly established Operator Station-to-Station and Operator Person-to-Person rates apply.

1.4.5 Time of Day

The time when connection is established, as provided in 1.4.6, following, determined in accordance with the time-standard or daylight saving - legally or commonly in use at the location of the rate center at the point of call origination - determines whether Day, Evening, Night or Weekend rates apply. This rule applies whether the call is sent-paid or collect.

Issued: Sept. 30, 1996

Effective: Dec. 7, 1996

By KAREN E. JENNINGS, President-Missouri
Southwestern Bell Telephone Company
St. Louis, Missouri

No supplement to this tariff will be issued except for the purpose of canceling this tariff.

Long Distance Message Telecommunications Service Tariff 4th Revised Sheet 19 Replacing 3rd Revised Sheet 19

LONG DISTANCE MESSAGE TELECOMMUNICATIONS SERVICE

RECEIVED

JAN 22 1991

1.4 TWO-POINT SERVICE-(Continued)

1.4.3 Person-to-Person Service-(Continued)

MISSOURI Public Service Commission

- (FC) C. When, after the telephone, mobile radio system or private branch exchange system called has been reached and while the connection remains established, the person originating the call requests or agrees to talk to any person other than the person specified or to any other person or mobile unit to be reached through a Mobile Telephone Service attendant, or to any other service point, department or office to be reached through a private branch exchange attendant, the classification of the call remains Person-to-Person.
- (FC) D. When the person originating the call wishes arrangements made in advance with a particular party or service point for the establishment of a connection at a specified time (appointment call), the call is classified as Person-to-Person.
- (FC) E. The Telephone Company does not undertake in connection with Person-to-Person service to bring to a telephone a called person who cannot be reached at a telephone connected to the telecommunications network.

CANCELLED

DEC 7 1996 BY 5th R.S. # 19 Public Service Commission MISSOURI

(RT)

(RT)

1.4.4 Reversal of Charges (Collect Calls)

- (RT) (AT) Charges for Fully-Automated Station-to-Station, Semi-Automated Station-to-Station, Operator Station-to-Station, Semi-Automated Person-to-Person and Operator Person-to-Person telephone calls may, upon request, be reversed, that is, charged against the called telephone, provided the charges are acceptable at the called telephone.
- (AT) (RT) The regularly established Fully-Automated Station-to-Station, (AT) Semi-Automated Station-to-Station, Operator Station-to-Station, (AT) (RT) Semi-Automated Person-to-Person and Operator Person-to-Person rates apply.

1.4.5 Time of Day

The time when connection is established, as provided in 1.4.6, following, determined in accordance with the time-standard or daylight saving - legally or commonly in use at the location of the rate center at the point of call origination - determines whether Day, Evening, Night or Weekend rates apply. This rule applies whether the call is sent-paid or collect.

Issued: JAN 22 1991

Effective: ~~1991-1-28~~ JAN 13 1992

By R. D. BARRON, Vice President-Missouri Southwestern Bell Telephone Company St. Louis, Missouri

FILED

JAN 13 1992

91-278

PUBLIC SERVICE COMMISSION

No supplement to this tariff will be issued except for the purpose of canceling this tariff.

Long Distance Message Telecommunications Service Tariff 3rd Revised Sheet 19 Replacing 2nd Revised Sheet 19

LONG DISTANCE MESSAGE TELECOMMUNICATIONS SERVICE

DEC 29 1983 MISSOURI Public Service Commission

1.4 TWO-POINT SERVICE-(Continued)

1.4.3 Person-to-Person Service-(Continued)

- (RT) B. When, after the telephone, mobile radio system or private branch exchange system called has been reached and while the connection remains established, the person originating the call requests or agrees to talk to any person other than the person specified or to any other person or mobile unit to be reached through a Mobile Telephone Service attendant, or to any other service point, department or office to be reached through a private branch exchange attendant, the classification of the call remains Person-to-Person.
- (CT) C. When the person originating the call wishes arrangements made in advance with a particular party or service point for the establishment of a connection at a specified time (appointment call), the call is classified as Person-to-Person.
- (CT) D. The Telephone Company does not undertake in connection with Person-to-Person service to bring to a telephone a called person who cannot be reached at a telephone connected to the telecommunications network. However, at the request of the calling party, the Telephone Company, when possible, will arrange on behalf of the calling party for messenger service; that is a messenger or other means to notify the called party of the call. The Telephone Company shall be reimbursed by the calling party for the amount expended for such messenger service, such charges being subject to prior authorization by the calling party to the extent that they can be determined in advance. Such charges for messenger service are in addition to the Tariff charges for the message.

CANCELLED

1.4.4 Reversal of Charges (Collect Calls)

Charges (including messenger charges) for Operator Person-to-Person telephone calls may, upon request, be reversed, that is, charged against the called telephone, provided the charges are acceptable at the called telephone.

JAN 13 1992 BY 4th R.S. #19 MISSOURI Public Service Commission

The regularly established Operator Station-to-Station and Person-to-Person rates (including messenger charges, if any) apply.

1.4.5 Time of Day

The time when connection is established, as provided in 1.4.6, following, determined in accordance with the time-standard or daylight saving - legally or commonly in use at the location of the rate center at the point of call origination - determines whether Day, Evening, Night, or Weekend rates apply. This rule applies whether the call is sent paid or collect.

FILED JAN - 1 1984 83 - 253 MISSOURI Public Service Commission

Issued: DEC 29 1983

Effective: JAN 0 1 1984

By R. D. BARRON, Vice President-Missouri Southwestern Bell Telephone Company St. Louis, Missouri

No supplement to this tariff will be issued except for the purpose of canceling this tariff.

Long Distance Message Telecommunications Service Tariff - 2nd Revised Sheet 19 Replacing 1st Revised Sheet 19

LONG DISTANCE MESSAGE TELECOMMUNICATIONS SERVICE

RECEIVED

DEC 7 1981

1.4 TWO-POINT SERVICE-(Continued)

(MT) 1.4.3 Person-to-Person Service-(Continued)

- B. When, after the telephone, Miscellaneous Common Carrier mobile radio system or private branch exchange system called has been reached and while the connection remains established, the person originating the call requests or agrees to talk to any person other than the person specified or to any other person or mobile unit to be reached through a Miscellaneous Common Carrier attendant, or to any other station, department or office to be reached through a private branch exchange attendant, the classification of the call remains Person-to-Person.
- C. When the person originating the call wishes arrangements made in advance with a particular party or station for the establishment of a connection at a specified time (appointment call), the call is classified as Person-to-Person.
- D. The Telephone Company does not undertake in connection with Person-to-Person service to bring to a telephone a called person who cannot be reached at a telephone connected to the Bell System. However, at the request of the calling party, the Telephone Company, when possible, will arrange on behalf of the calling party for messenger service; that is a messenger or other means to notify the called party of the call. The Telephone Company shall be reimbursed by the calling party for the amount expended for such messenger service, such charges being subject to prior authorization by the calling party to the extent that they can be determined in advance. Such charges for messenger service are in addition to the Tariff charges for the message.

1.4.4 Reversal of Charges (Collect Calls)

(CT) Charges (including messenger charges) for Operator Station-to-Station and Person-to-Person telephone calls may, upon request, be reversed, that is, charged against the called telephone, provided the charges are acceptable at the called telephone.

The regularly established Operator Station-to-Station and Person-to-Person rates (including messenger charges, if any) apply.

1.4.5 Time of Day

(CT) The time when connection is established, as provided in 1.4.6, following, determined in accordance with the time standard or daylight saving - legally or commonly in use at the location of the rate center of the calling station - determines whether Day, Evening, Night, or Weekend rates apply. This rule applies whether the call is sent paid or collect.

CANCELLED

JAN - 1 1984

3rd RS 19

MISSOURI PUBLIC SERVICE COMMISSION

Issued:

DEC 07 1981

Effective:

BY R. R. SHOCKLEY, Vice President-Missouri Southwestern Bell Telephone Company St. Louis, Missouri

DEC 09 1981

DEC - 9 1981

81 - 208 Public Service Commission

FILED

No supplement to this tariff will be issued except for the purpose of canceling this tariff.

Long Distance Message Telecommunications Service Tariff 1st Revised Sheet 19 Replacing Original Sheet 19

LONG DISTANCE MESSAGE TELECOMMUNICATIONS SERVICE

1.4 TWO-POINT SERVICE-(Continued)

1.4.3 Person-to-Person Service-(Continued)

D. (Continued)

by the calling party for the amount expended for such messenger service, such charges being subject to prior authorization by the calling party to the extent that they can be determined in advance. Such charges for messenger service are in addition to the tariff charges for the message.

1.4.4 Reversal of Charges (Collect Calls)

Charges (including messenger charges) for all classes of telephone calls, except calls to which Dial Station-to-Station rates apply, may, upon request, be reversed, that is, charged against the called telephone, provided the charges are acceptable at the time the call is made.

The regularly established Operator Station-to-Station and Person-to-Person rates (including messenger charges, if any) apply.

1.4.5 Time of Day

The time when connection is established, as provided in 1.4.6 following, determined in accordance with the time-standard or daylight saving - legally or commonly in use at the location of the rate center of the calling station, determines whether Day, Evening, Night, Weekend or All Days-All Hours rates apply. This rule applies whether the call is sent paid or collect.

In cases where a message begins in one rate period and ends in another, the rate in effect at the time the connection is established applies.

(CT) 1.4.6 Rates

The following rates apply to Intrastate business between all points within the State of Missouri.

A. Dial Station-to-Station

- 1. Initial Period rates indicated in the Rate Table in 1.4.8, following, are for connections of one minute or any fraction thereof.

RECEIVED

MAY 28 1975

CANCELLED

BY 2 RS 19 PUBLIC SERVICE COMMISSION OF MISSOURI

FILED

JUN 4 1975 Case # 17, 898

Issued: May 30, 1975

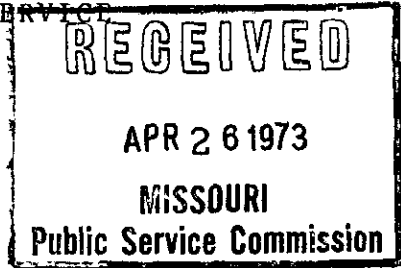
Effective: June 4, 1975

BY R. R. SHOCKLEY, Vice President-Missouri Southwestern Bell Telephone Company St. Louis, Missouri

No supplement to this tariff will be issued except for the purpose of canceling this tariff.

Long Distance Message Telecommunications Service Tariff Original Sheet 19.

LONG DISTANCE MESSAGE TELECOMMUNICATIONS SERVICE



1.4 TWO-POINT SERVICE-(Continued)

1.4.3 Person-to-Person Service-(Continued)

D. (Continued)

by the calling party for the amount expended for such messenger service, such charges being subject to prior authorization by the calling party to the extent that they can be determined in advance. Such charges for messenger service are in addition to the tariff charges for the message.

1.4.4 Reversal of Charges (Collect Calls)

Charges (including messenger charges) for all classes of telephone calls, except calls to which Dial Station-to-Station rates apply, may, upon request, be reversed, that is, charged against the called telephone, provided the charges are acceptable at the called telephone.

The regularly established Operation Station-to-Station and Person-to-Person rates (including messenger charges, if any) apply.



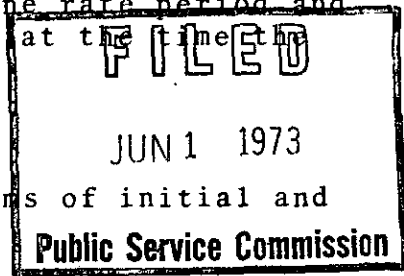
JUN 4 1975

1.4.5 Time of Day

The time when connection is established in 1.4.6 following, determined in accordance with Missouri time-standard or daylight saving - legally or commonly in use at the location of the rate center of the calling station, determines whether Day, Evening, Night, Weekend or All Days-All Hours rates apply. This rule applies whether the call is sent paid or collect.

BY *1st R.S. 19*
PUBLIC SERVICE COMMISSION

In cases where a message begins in one rate period and ends in another, the rate in effect at the time the connection is established applies.



1.4.6 Initial and Additional Periods

A. Message toll rates are quoted in terms of initial and additional periods.

1. The initial period is the interval of time allowed at the rate quoted for a Long Distance connection between given points. Initial period rates are shown in 1.4.8A and 1.4.8B following.

Issued: MAY 1 1973

Effective: JUN 1 1973

BY R. R. SHOCKLEY, Vice President, Missouri-Illinois Southwestern Bell Telephone Company St. Louis, Missouri

No Supplement to this tariff will be issued except for the purpose of canceling this tariff.

Long Distance Message
Telecommunications Service Tariff
8th Revised Sheet 20
Replacing 7th Revised Sheet 20

LONG DISTANCE MESSAGE TELECOMMUNICATIONS SERVICE

Missouri Public

1.4 TWO-POINT SERVICE-(Continued)

REC'D MAR 26 2002

1.4.6 Rates

Service Commission

A. Usage - All Classes of Service

- (CT) 1. Initial Period rates indicated in the Rate Tables in 1.4.7, following, are for connections of one minute or any fraction thereof.
- (CT) 2. All additional minute rates indicated in the Rate Tables in 1.4.7, following, are for each additional minute or any fraction thereof that the connection continues beyond the initial period.
- 3. When the connection is established in one rate period and ends in another, the rate for each rate period applies to the portion of the connection occurring within that rate period. In the event that a minute of use is split between two rate periods, the rate in effect at the start of that minute applies.
- (RT) 4. Evening, night and weekend reduced rates are applied to message connection established during the periods indicated in 1.4.1, preceding.
- (RT) 5. When application of the rates indicated in the Rate Tables in 1.4.7, following, results in a fractional charge, the amount will be rounded to the nearest cent.

B. Operator Service Charges

- (RT) 1. The rates in following, will apply on Station-to-Station and Person-to-Person service in addition to the rates specified in 1.4.6.A., preceding. Only one service charge per call will apply.

Missouri Public

FILED APR 02 2002

Service Commission

Issued: March 26, 2002

Effective: April 2, 2002

By JAN NEWTON, President-Missouri
Southwestern Bell Telephone, L.P., d/b/a Southwestern Bell Telephone Company
St. Louis, Missouri

No supplement to this tariff will be issued except for the purpose of canceling this tariff.

Long Distance Message
Telecommunications Service Tariff
7th Revised Sheet 20
Replacing 6th Revised Sheet 20

LONG DISTANCE MESSAGE TELECOMMUNICATIONS SERVICE

RECEIVED

1.4 TWO-POINT SERVICE-(Continued)

FEB 26 1997

1.4.6 Rates

**MISSOURI
Public Service Commission**

A. Usage - All Classes of Service

1. Initial Period rates indicated in the Rate Table in 1.4.8, following, are for connections of one minute or any fraction thereof.
2. All additional minute rates indicated in the Rate Table in 1.4.8, following, are for each additional minute or any fraction thereof that the connection continues beyond the initial period.
3. When the connection is established in one rate period and ends in another, the rate for each rate period applies to the portion of the connection occurring within that rate period. In the event that a minute of use is split between two rate periods, the rate in effect at the start of that minute applies.
4. Discounts for the evening, night and weekend reduced rate periods indicated in the Table in 1.4.1, preceding, are expressed as a percent reduction of the charge calculated at the rates indicated in the table in 1.4.8 and are applied to message connection established during the periods indicated in 1.4.1, preceding.
5. Discounts apply to the charge for the initial minute occurring within the discount rate period and to all additional minutes occurring within each discount rate period. The discount is computed separately for charges in each rate period and the results are then totaled. When application of the discount results in a fractional charge, the amount will be rounded to the nearest cent.

B. Operator Service Charges

1. The rates in following, will apply on Station-to-Station and Person-to-Person service in addition to the rates specified in 1.4.6, A., preceding, and in 1.12.3. Discounts, as specified in 1.4.1, A., do not apply to operator service charges. Only one service charge per call will apply.

(AT)

CANCELLED

APR 02 2002
84hRS 20

Public Service Commission
MISSOURI

FILED

MAR 28 1997

MO. PUBLIC SERVICE COMM

Issued: **FEB 26 1997**

Effective: **MAR 28 1997**

By KAREN E. JENNINGS, President-Missouri Division
Southwestern Bell Telephone
St. Louis, Missouri

No supplement to this tariff will be issued except for the purpose of canceling this tariff.

Long Distance Message Telecommunications Service Tariff 6th Revised Sheet 20 Replacing 5th Revised Sheet 20

LONG DISTANCE MESSAGE TELECOMMUNICATIONS SERVICE

RECEIVED

1.4 TWO-POINT SERVICE- (Continued)

1.4.6 Rates

SEP 30 1996

A. Usage - All Classes of Service

MISSOURI

1. Initial Period rates indicated in the Rate Table in Public Service Commission are for connections of one minute or any fraction thereof.
2. All additional minute rates indicated in the Rate Table in 1.4.8, following, are for each additional minute or any fraction thereof that the connection continues beyond the initial period.
3. When the connection is established in one rate period and ends in another, the rate for each rate period applies to the portion of the connection occurring within that rate period. In the event that a minute of use is split between two rate periods, the rate in effect at the start of that minute applies.
4. Discounts for the evening, night and weekend reduced rate periods indicated in the Table in 1.4.1, preceding, are expressed as a percent reduction of the charge calculated at the rates indicated in the table in 1.4.8 and are applied to message connection established during the periods indicated in 1.4.1, preceding.
5. Discounts apply to the charge for the initial minute occurring within the discount rate period and to all additional minutes occurring within each discount rate period. The discount is computed separately for charges in each rate period and the results are then totaled. When application of the discount results in a fractional charge, the amount will be rounded to the nearest cent.

(AT) B. Operator Service Charges

- (RT) 1. The rates in following, will apply on Station-to-Station and
 (RT) Person-to-Person service in addition to the rates specified in 1.4.6,
 (AT) A., preceding. Discounts, as specified in 1.4.1, A., do not apply to
 (RT) operator service charges. Only one service charge per call will apply.

CANCELLED

MAR 28 1997
BY 7th P.S. # 20
Public Service Commission
MISSOURI

Issued: SEP 30 1996

Effective: ~~SEP 30 1996~~

By KAREN E. JENNINGS, Vice President-Missouri
Southwestern Bell Telephone Company
St. Louis, Missouri

DEC 7 1996 FILED

DEC 7 1996

MO.PUBLICSERVICECOMM

No supplement to this tariff will be issued except for the purpose of canceling this tariff.

Long Distance Message Telecommunications Service Tariff 5th Revised Sheet 20 Replacing 4th Revised Sheet 20

LONG DISTANCE MESSAGE TELECOMMUNICATIONS SERVICE RECEIVED

1.4 TWO-POINT SERVICE-(Continued)

JAN 22 1991

1.4.6 Rates

MO. PUBLIC SERVICE COMM.

A. Usage - All Classes of Service

1. Initial Period rates indicated in the Rate Table in 1.4.8, following, are for connections of one minute or any fraction thereof.
2. All additional minute rates indicated in the Rate Table in 1.4.8, following, are for each additional minute or any fraction thereof that the connection continues beyond the initial period.
3. When the connection is established in one rate period and ends in another, the rate for each rate period applies to the portion of the connection occurring within that rate period. In the event that a minute of use is split between two rate periods, the rate in effect at the start of that minute applies.
4. Discounts for the evening, night and weekend reduced rate periods indicated in the Table in 1.4.1, preceding, are expressed as a percent reduction of the charge calculated at the rates indicated in the table in 1.4.8 and are applied to message connection established during the periods indicated in 1.4.1, preceding.
5. Discounts apply to the charge for the initial minute occurring within the discount rate period and to all additional minutes occurring within each discount rate period. The discount is computed separately for charges in each rate period and the results are then totaled. When application of the discount results in a fractional charge, the amount will be rounded to the nearest cent.

B. Service Charges

- (AT) (RT) 1. The rates in 2., 3., 4., 5., 6., 7. and 8., following, will apply to Fully-Automated Calling Card Station-to-Station, Semi-Automated Calling Card Station-to-Station, Fully Automated Station-to-Station, Semi-Automated Station-to-Station, Operator Station-to-Station, Semi-Automated Person-to-Person and Operator Person-to-Person service in addition to the rates specified in 1.4.6, A., preceding. Discounts, as specified in 1.4.1, A., do not apply to service charges. Only one service charge per call will apply.
- (CT) | 2. Fully-Automated Calling Card Station-to-Station - For fully-automated calling card station-to-station calls, a charge of \$.35 per call applies where Southwestern Bell Telephone is the operator service provider.
- (CT) (AT) |
- (AT) (AT) |

DEC 7 1986
6th R.S. # 20
Missouri Public Service Commission

Issued: JAN 22 1991

Effective: JAN 13 1992

FILED

By R. D. BARRON, Vice President-Missouri Southwestern Bell Telephone Company St. Louis, Missouri

JAN 13 1992
91-278
Public Service Commission

No supplement to this tariff will be issued except for the purpose of canceling this tariff.

Long Distance Message Telecommunications Service Tariff
4th Revised Sheet 20
Replacing 3rd Revised Sheet 20

RECEIVED

LONG DISTANCE MESSAGE TELECOMMUNICATIONS SERVICE

CANCELLED

DEC 29 1983

1.4 TWO-POINT SERVICE-(Continued)

1.4.6 Rates

JAN 13 1992

BY S*RS #20

MISSOURI

A. Usage - All Classes of Service

Public Service Commission Missouri

1. Initial Period rates indicated in the Rate Table in 1.4.8, following, are for connections of one minute or any fraction thereof.
2. All additional minute rates indicated in the Rate Table in 1.4.8, following, are for each additional minute or any fraction thereof that the connection continues beyond the initial period.
3. When the connection is established in one rate period and ends in another, the rate for each rate period applies to the portion of the connection occurring within that rate period. In the event that a minute of use is split between two rate periods, the rate in effect at the start of that minute applies.
4. Discounts for the evening, night and weekend reduced rate periods indicated in the Table in 1.4.1, preceding, are expressed as a percent reduction of the charge calculated at the rates indicated in the table in 1.4.8 and are applied to message connection established during the periods indicated in 1.4.1, preceding.
5. Discounts apply to the charge for the initial minute occurring within the discount rate period and to all additional minutes occurring within each discount rate period. The discount is computed separately for charges in each rate period and the results are then totaled. When application of the discount results in a fractional charge, the amount will be rounded to the nearest cent.

(AT)

(FC)

(RT)

(CP)

B. Service Charges

(CT)

1. The rates in 2., 3. and 4., following, will apply on Dial Calling Card Station-to-Station, Operator Station-to-Station and Person-to-Person service in addition to the rates as specified in 1.4.6, A., preceding. Discounts, as specified in 1.4.1, A., do not apply to service charges. Only one service charge per call will apply.

(CT)

2. Dial Calling Card Station-to-Station - For calls charged to a Telephone Company calling card and involving no other operator services, a charge of \$.30 per call applies where automatic recording equipment is available and the person originating the call dials zero, then the telephone number desired, and the call is billed to a Telephone Company calling card. Where no automatic recording equipment exists, this rate will also apply for a Telephone Company calling card call.

JAN - 1 1992

83-253

Issued: DEC 29 1983

Effective: JAN 0 1 1984 Public Service Commission

By R. D. BARRON, Vice President-Missouri
Southwestern Bell Telephone Company
St. Louis, Missouri

No supplement to this tariff will be issued except for the purpose of canceling this tariff.

Long Distance Message Telecommunications Service Tariff 3rd Revised Sheet 20 Replacing 2nd Revised Sheet 20

LONG DISTANCE MESSAGE TELECOMMUNICATIONS SERVICE

1.4 TWO-POINT SERVICE-(Continued)

1.4.6 Rates

(CP) A. Usage - All Classes of Service

1. Initial Period rates indicated in the Rate Table in 1.4.8, following, are for connections of one minute or any fraction thereof.
2. All additional minute rates indicated in the Rate Table in 1.4.8, following, are for each additional minute or any fraction thereof that the connection continues beyond the initial period.
3. Discounts for the evening, and night and weekend reduced rate periods indicated in the Table in 1.4.1, preceding, are expressed as a percent reduction of the charge calculated at the rates indicated in the table in 1.4.8 and are applied to message connection established during the periods indicated in 1.4.1, preceding.
4. Discounts are applied to the sum of the initial period and additional minute charges determined from the rate table in 1.4.8, following.
5. When the application of the discount results in a fractional charge, the amount will be rounded to the nearest cent.

(RT)

(NR)

B. Service Charges

1. The rates in 2., 3. and 4., following, will apply on Dial Credit Card Station-to-Station, Operator Station-to-Station and Person-to-Person service in addition to the rates as specified in 1.4.6 A., preceding. Discounts, as specified in 1.4.1 A., do not apply to Service Charges. Only one service charge per call will apply.
2. Dial Credit Card Station-to-Station - For calls charged to a Telephone Company credit card or Special Billing Number and involving no other operator services, a charge of \$0.30 per call applies where automatic recording equipment is available and the person originating the call dials zero, then the telephone number desired, and the call is billed to a Telephone Company credit card or Special Billing Number. Where no automatic recording equipment is available, this rate will also apply for a Telephone Company credit card or Special Billing Number call.
3. Operator Station-to-Station - For operator station-to-station calls, a charge of \$1.05 per call applies.

RECEIVED

DEC 7 1981

MISSOURI Public Service Commission

CANCELLED

JAN 1 1984
BY *[Signature]*
PUBLIC SERVICE COMMISSION OF MISSOURI

Issued:

DEC 07 1981

Effective:

DEC 09 1981

BY R. R. SHOCKLEY, Vice President-Missouri Southwestern Bell Telephone Company St. Louis, Missouri

DEC -9 1981
81-208

Public Service Commission

No supplement to this tariff will be issued except for the purpose of canceling this tariff.

Long Distance Message Telecommunications Service Tariff
2nd Revised Sheet 20
Replacing 1st Revised Sheet 20

LONG DISTANCE MESSAGE TELECOMMUNICATIONS SERVICE

1.4 TWO-POINT SERVICE-(Continued)

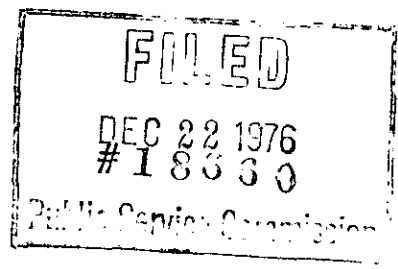
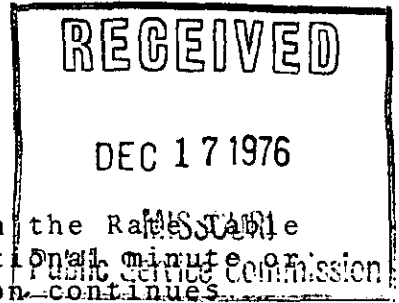
1.4.6 Rates-(Continued)

A. Dial Station-to-Station-(Continued)

2. All additional minute rates indicated in the Rate Table in 1.4.8, following, are for each additional minute or any fraction thereof that the connection continues beyond the initial period.
3. Discounts for the evening, and night and weekend reduced rate periods indicated in the Table in 1.4.1, preceeding, are expressed as a percent reduction of the charge calculated at the rates indicated in the table in 1.4.8, and are applied to message connection established during the periods indicated in 1.4.1, preceeding.
4. Discounts are applied to the sum of the initial period and additional minute charges determined from the rate table in 1.4.8, following.
- (AT) 5. When the application of the discount results in a fractional charge, the amount will be rounded to the nearest cent.

B. Operator Station-to-Station and Operator Person-to-Person

1. Initial Period rates indicated in the Rate Table in 1.4.8, following, are for a connection of three minutes or any fraction thereof.
2. All additional minute rates indicated in the Rate Table in 1.4.8, following, are for each additional minute or any fraction thereof that the connection extends beyond the initial period.
3. Initial Period and additional minute rates indicated in the Rate Table in 1.4.8, following, apply for all days, all hours.



Issued: December 17, 1976

Effective: December 22, 1976

BY R.R. SHOCKLEY, Vice President-Missouri
Southwestern Bell Telephone Company
St. Louis, Missouri

No supplement to this tariff will be issued except for the purpose of canceling this tariff.

Long Distance Message Telecommunications Service Tariff 1st Revised Sheet 20 Replacing Original Sheet 20

LONG DISTANCE MESSAGE TELECOMMUNICATIONS SERVICE

1.4 TWO-POINT SERVICE-(Continued)

RECEIVED

(CT) 1.4.6 Rates-(Continued)

MAY 28 1975

(CT) A. Dial Station-to-Station-(Continued)

MISSOURI

- 2. All additional minute rates indicated in the Rate Table in 1.4.8, following, are for each additional minute or any fraction thereof that the connection continues beyond the initial period.
- 3. Discounts for the evening, and night and weekend reduced rate periods indicated in the Table in 1.4.1, preceeding, are expressed as a percent reduction of the charge calculated at the rates indicated in the table in 1.4.8, and are applied to message connection established during the periods indicated in 1.4.1, preceeding.
- 4. Discounts are applied to the sum of the initial period and additional minute charges determined from the rate table in 1.4.8, following.
- 5. When the discount results in a fractional charge, the amount will be rounded to the nearest cent.

B. Operator Station-to-Station and Operator Person-to-Person

- 1. Initial Period rates indicated in the Rate Table in 1.4.8, following, are for a connection of three minutes or any fraction thereof.
- 2. All additional minute rates indicated in the Rate Table in 1.4.8, following, are for each additional minute or any fraction thereof that the connection extends beyond the initial period.
- 3. Initial Period and additional minute rates indicated in the Rate Table, following, apply for all days, all hours.

(CT)

CANCELLED

DEC 22 1976

BY 2nd. RS 20
PUBLIC SERVICE COMMISSION
OF MISSOURI

FILED

JUN 4 1975

Case # 17,898
Public Service Commission

Issued: May 30, 1975

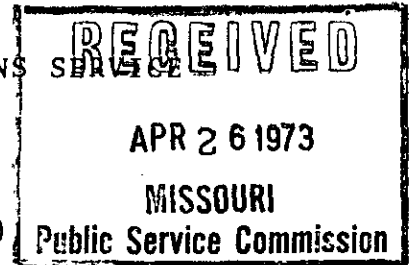
Effective: June 4, 1975

BY R. R. SHOCKLEY, Vice President-Missouri
Southwestern Bell Telephone Company
St. Louis, Missouri

No supplement to this tariff will be issued except for the purpose of canceling this tariff.

Long Distance Message Telecommunications Service Tariff Original Sheet 20

LONG DISTANCE MESSAGE TELECOMMUNICATIONS SERVICE



1.4 TWO-POINT SERVICE-(Continued)

1.4.6 Initial and Additional Periods-(Continued)

A. Message toll rates are quoted in terms of initial and additional periods.-(Continued)

1. (Continued)

All initial period rates are for telephone connections of three minutes or any fraction thereof, except as indicated in the rate tables in 1.4.8 following for Night Dial Station-to-Station calls.

- 2. The additional period is the unit of time used for measuring and charging for time in excess of the initial period. Additional period rates are shown in 1.4.8A and 1.4.8B following.

All additional period rates are for each additional minute or any fraction thereof that the telephone connection continues beyond the initial period.

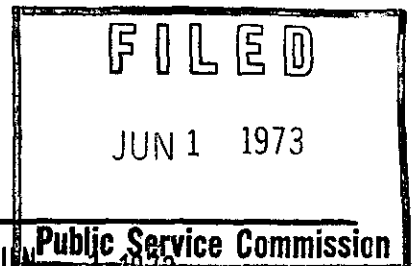
B. Timing of Messages

- 1. On Dial Station-to-Station or Operator Station-to-Station calls, chargeable time begins when connection is established between the calling telephone and the called telephone, Miscellaneous Common Carrier mobile telephone system or private branch exchange system.
- 2. On Person-to-Person calls, chargeable time begins when connection is established between the calling person and the particular person or station specified or an agreed alternate.
- 3. Chargeable time ends when the connection is terminated at any point.
- 4. Chargeable time does not include time lost because of faults or defects in service.

CANCELLED

JUN 4 1975

BY lat R.S. 20
PUBLIC SERVICE COMMISSION



Issued: MAY 1 1973

Effective: JUN 1 1973 Public Service Commission

BY R. R. SHOCKLEY, Vice President, Missouri-Illinois Southwestern Bell Telephone Company St. Louis, Missouri

LONG DISTANCE MESSAGE TELECOMMUNICATIONS SERVICE TARIFF

Southwestern Bell Telephone, L.P.
d/b/a AT&T Missouri17th Revised Sheet 20.01
Replacing 16th Revised Sheet 20.01

LONG DISTANCE MESSAGE TELECOMMUNICATIONS SERVICE

1.4 Two-Point Service (cont'd)

1.4.6 Rates (cont'd)

B. Operator Service Charges (cont'd)

2. Rates

Description	Non-Coin(2) Rate	Coin(2) Rate
<u>Station-to-Station Service</u>		
<u>Calling Card</u>		
Non-Automated	\$1.70(CR)	\$1.70(CR)
Semi-Automated	1.01(CR)	1.01(CR)
Fully Automated	.50(CR)	.50(CR)
<u>Collect Non-Inmate</u>		
Non-Automated	1.70(CR)	1.70(CR)
Semi-Automated	1.11(CR)	1.11(CR)
Collect Inmate	.81	.81
<u>Billed to a Third Number</u>		
Non-Automated	1.70(CR)	1.70(CR)
Semi-Automated	1.11(CR)	1.11(CR)
<u>Sent Paid</u>		
Non-Automated	1.70(CR)	1.15
Semi-Automated	1.41(CR)	.95

- (1) Person-to-Person service may be billed to a calling card, billed to a third number or billed as collect at no additional charge.
- (2) Coin includes all pay type telephones that accept coins, or are coinless, or have a card reader, or a combination of a coin accepting/card reader telephone. For the purposes of applying operator service charges, all telephones that are not defined as "coin" will be treated as "non-coin."

Issued: September 1, 2006

Effective: October 1, 2006

By CINDY BRINKLEY, President – Missouri
St. Louis, Missouri

No Supplement to this tariff will be issued except for the purpose of canceling this tariff.

Long Distance Message
Telecommunications Service Tariff
16th Revised Sheet 20.01
Replacing 15th Revised Sheet 20.01

LONG DISTANCE MESSAGE TELECOMMUNICATIONS SERVICE

1.4 TWO-POINT SERVICE (cont'd)

1.4.6 Rates (cont'd)

B. Operator Service Charges (cont'd)

2. Rates

Description	Non-Coin(2) Rate	Coin(2) Rate
<u>Station-to-Station Service</u>		
<u>Calling Card</u>		
Non-Automated	\$ 1.62	\$ 1.62
Semi-Automated	.97	.97
Fully Automated	.48	.48
<u>Collect Non-Inmate</u>		
Non-Automated	1.62	1.62
Semi-Automated	1.06(NR)	1.06(NR)
(RT)(DR) Collect Inmate	.81	.81
<u>Billed to a Third Number</u>		
Non-Automated	1.62	1.62
Semi-Automated	1.06(NR)	1.06(NR)
(RT)(DR)		
<u>Sent Paid</u>		
Non-Automated	1.62	1.15
Semi-Automated	1.35	.95

- (1) Person-to-Person service may be billed to a calling card, billed to a third number or billed as collect at no additional charge.
- (2) Coin includes all pay type telephones that accept coins, or are coinless, or have a card reader, or a combination of a coin accepting/card reader telephone. For the purposes of applying operator service charges, all telephones that are not defined as "coin" will be treated as "non-coin."

Issued: June 28, 2005

Effective: July 28, 2005

By CINDY BRINKLEY, President-SBC Missouri
Southwestern Bell Telephone, L.P., d/b/a SBC Missouri
St. Louis, Missouri

Cancelled

October 1, 2006

Missouri Public
Service Commission

Filed

Missouri Public
Service Commission

No Supplement to this tariff will be issued except for the purpose of canceling this tariff.

Long Distance Message
Telecommunications Service Tariff
15th Revised Sheet 20.01
Replacing 14th Revised Sheet 20.01

LONG DISTANCE MESSAGE TELECOMMUNICATIONS SERVICE

1.4 TWO-POINT SERVICE (cont'd)

Missouri Public
Service Commission

1.4.6 Rates (cont'd)

REC'D JUN 30 2004

B. Operator Service Charges (cont'd)

2. Rates

Description	Non-Coin(2) Rate	Coin(2) Rate
<u>Station-to-Station Service</u>		
<u>Calling Card</u>		
Non-Automated	\$ 1.62(CR)	\$ 1.62(CR)
Semi-Automated	.97(CR)	.97(CR)
Fully Automated	.48(CR)	.48(CR)
<u>Collect Non-Inmate</u>		
Non-Automated	1.62(CR)	1.62(CR)
Semi-Automated	1.35(CR)	1.35(CR)
Fully Automated	1.06(CR)	1.06(CR)
Collect Inmate	.81	.81
<u>Billed to a Third Number</u>		
Non-Automated	1.62(CR)	1.62(CR)
Semi-Automated	1.35(CR)	1.35(CR)
Fully Automated	1.06(CR)	1.06(CR)
<u>Sent Paid</u>		
Non-Automated	1.62(CR)	1.15
Semi-Automated	1.35(CR)	.95

CANCELLED

JUL 28 2005
By 16th RS. 20.01
Public Service Commission
MISSOURI

- (1) Person-to-Person service may be billed to a calling card, billed to a third number or billed as collect at no additional charge.
- (2) Coin includes all pay type telephones that accept coins, or are coinless, or have a card reader, or a combination of a coin accepting/card reader telephone. For the purposes of applying operator service charges, all telephones that are not defined as "coin" will be treated as "non-coin."

Issued: June 30, 2004

Effective: July 10, 2004

By CINDY BRINKLEY, President-SBC Missouri
Southwestern Bell Telephone, L.P., d/b/a SBC Missouri
St. Louis, Missouri

Missouri Public
Service Commission

FILED JUL 10 2004

No Supplement to this tariff will be issued except for the purpose of canceling this tariff.

Long Distance Message
Telecommunications Service Tariff
14th Revised Sheet 20.01
Replacing 13th Revised Sheet 20.01

LONG DISTANCE MESSAGE TELECOMMUNICATIONS SERVICE

- (CT) 1.4 TWO-POINT SERVICE (cont'd)
- (CT) 1.4.6 Rates (cont'd)
- (CT) B. Operator Service Charges (cont'd)
 - 2. Rates

CANCELLED

JUL 10 2004
By 15th RS 20.01
Public Service Commission
MISSOURI

Description	Non-Coin(2) Rate	Coin(2) Rate
<u>Station-to-Station Service</u>		
<u>Calling Card</u>		
Non-Automated	\$ 1.50(CR)	\$ 1.50(CR)
Semi-Automated	.90(CR)	.90(CR)
Fully Automated	.45(CR)	.45(CR)
<u>Collect Non-Inmate</u>		
Non-Automated	1.50(CR)	1.50(CR)
Semi-Automated	1.25(CR)	1.25(CR)
Fully Automated	.99(CR)	.99(CR)
Collect Inmate	.81	.81
<u>Billed to a Third Number</u>		
Non-Automated	1.50(CR)	1.50(CR)
Semi-Automated	1.25(CR)	1.25(CR)
Fully Automated	.99(CR)	.99(CR)
<u>Sent Paid</u>		
Non-Automated	1.50(CR)	1.15
Semi-Automated	1.25(CR)	.95

(MT)
(MT)

- (1) Person-to-Person service may be billed to a calling card, billed to a third number or billed as collect at no additional charge.
- (2) Coin includes all pay type telephones that accept coins, or are coinless, or have a card reader, or a combination of a coin accepting/card reader telephone. For the purposes of applying operator service charges, all telephones that are not defined as "coin" will be treated as "non-coin."

Issued: May 9, 2003

Effective: ~~May 21, 2003~~
May 30, 2003

By CINDY BRINKLEY, President-SBC Missouri
Southwestern Bell Telephone, L.P., d/b/a SBC Missouri
St. Louis, Missouri

Filed

MO PSC

No Supplement to this tariff will be issued except for the purpose of canceling this tariff.

Long Distance Message Telecommunications Service Tariff
13th Revised Sheet 20.01
Replacing 12th Revised Sheet 20.01

LONG DISTANCE MESSAGE TELECOMMUNICATIONS SERVICE

1.4 TWO-POINT SERVICE-(Continued)

Missouri Public

1.4.6 Rates-(Continued)

REC'D JUN 10 2002

B. Operator Service Charges-(Continued)

Service Commission

2. Rates

Description	Non-Coin(2) Rate	Coin(2) Rate
<u>Station-to-Station Service</u>		
<u>Calling Card</u>		
Non-Automated	\$1.35	\$1.35
Semi-Automated	.80	.80
Fully Automated	.40	.40
<u>Collect Non-Inmate</u>		
Non-Automated	\$1.35	\$1.35
Semi-Automated	1.15	1.15
Fully Automated	.90	.90
Collect Inmate	.81	.81
<u>Billed to a Third Number</u>		
Non-Automated	\$1.35	\$1.35
Semi-Automated	1.15	1.15
Fully Automated	.90	.90
<u>Sent Paid</u>		
Non-Automated	\$1.35	\$1.15
Semi-Automated	1.15	.95
<u>Person-to-Person Service(1)</u>		
Non-Automated	\$3.00	\$3.00
Semi-Automated	2.55	2.55
<u>Other Services</u>		
Line Status Verification	\$1.50(CR)	\$1.50(
Busy Interrupt	2.31(CR)	2.31(CR)

- (1) Person-to-Person service may be billed to a calling card, billed to a third number or billed as collect at no additional charge.
- (2) Coin includes all pay type telephones that accept coins, or are coinless, or have a card reader, or a combination of a coin accepting/card reader telephone. For the purposes of applying operator service charges, all telephones that are not defined as "coin" will be treated as "non-coin."

Issued: June 10, 2002

Effective: July 10, 2002
Missouri Public

By JAN NEWTON, President-Missouri
Southwestern Bell Telephone, L.P., d/b/a Southwestern Bell Telephone Company
St. Louis, Missouri

Service Commission

CANCELLED
MAY 30 2003
JUL 10 2004 ek
By 14 HRS 20.01
Public Service Commission
MISSOURI

FILED JUL 10 2002

No Supplement to this tariff will be issued except for the purpose of canceling this tariff.

Long Distance Message
Telecommunications Service Tariff
12th Revised Sheet 20.01
Replacing 11th Revised Sheet 20.01

LONG DISTANCE MESSAGE TELECOMMUNICATIONS SERVICE

Missouri Public

1.4 TWO-POINT SERVICE-(Continued)

1.4.6 Rates-(Continued)

REC'D APR 02 2002

B. Operator Service Charges-(Continued)

Service Commission

2. Rates

CANCELLED

JUL 10 2002

BY 134725 20.01
Public Service Commission
MISSOURI

(CT)

(AT)

<u>Description</u>	<u>Non-Coin(2) Rate</u>	<u>Coin(2) Rate</u>
<u>Station-to-Station Service</u>		
<u>Calling Card</u>		
Non-Automated	\$1.35(CR)	\$1.35(CR)
Semi-Automated	.80(CR)	.80(CR)
Fully Automated	.40(CR)	.40(CR)
<u>Collect Non-Inmate</u>		
Non-Automated	\$1.35(CR)	\$1.35(CR)
Semi-Automated	1.15(CR)	1.15(CR)
Fully Automated	.90(CR)	.90(CR)
Collect Inmate	.81	.81
<u>Billed to a Third Number</u>		
Non-Automated	\$1.35(CR)	\$1.35(CR)
Semi-Automated	1.15(CR)	1.15(CR)
Fully Automated	.90(CR)	.90(CR)
<u>Sent Paid</u>		
Non-Automated	\$1.35(CR)	\$1.15
Semi-Automated	1.15(CR)	.95
<u>Person-to-Person Service(1)</u>		
Non-Automated	\$3.00(CR)	\$3.00(CR)
Semi-Automated	2.55(CR)	2.55(CR)
<u>Other Services</u>		
Line Status Verification	\$1.39	\$1.39
Busy Interrupt	2.14	2.14

- (1) Person-to-Person service may be billed to a calling card, billed to a third number or billed as collect at no additional charge.
- (2) Coin includes all pay type telephones that accept coins, or are coinless, or have a card reader, or a combination of a coin accepting/card reader telephone. For the purposes of applying operator service charges, all telephones that are not defined as "coin" will be treated as "non-coin."

Issued: April 2, 2002

Effective: May 2, 2002

Missouri Public

By JAN NEWTON, President-Missouri
Southwestern Bell Telephone, L.P., d/b/a Southwestern Bell Telephone Company
St. Louis, Missouri

FILED MAY 02 2002
02 -10 57

Service Commission

No supplement to this tariff will be issued except for the purpose of canceling this tariff.
20.01

Long Distance Message Telecommunications Service Tariff
11th Revised Sheet 20.01
Replacing 10th Revised Sheet
Missouri Public

LONG DISTANCE MESSAGE TELECOMMUNICATIONS SERVICE

REC'D JUN 05 2001

1.4 TWO-POINT SERVICE-(Continued)

1.4.6 Rates-(Continued)

Service Commission

B. Operator Service Charges-(Continued)

2. Rates

CANCELLED

<u>Description</u>	<u>Non-Coin(2)</u> <u>Rate</u>	<u>Coin(2)</u> <u>Rate</u>
MAY 02 2002		
<i>By 124MRS 20.01</i>		
Public Service Commission		
MISSOURI		
<u>Station-to-Station Service</u>		
<u>Calling Card</u>		
Non-Automated	\$1.24 (CR)	\$1.24 (CR)
Semi-Automated	.75 (CR)	.75 (CR)
Fully Automated	.37 (CR)	.37 (CR)
<u>Collect</u>		
Non-Automated	\$1.24 (CR)	\$1.24 (CR)
Semi-Automated	1.02 (CR)	1.02 (CR)
Fully Automated	.81 (CR)	.81 (CR)
<u>Billed to a Third Number</u>		
Non-Automated	\$1.24 (CR)	\$1.24 (CR)
Semi-Automated	1.02 (CR)	1.02 (CR)
Fully Automated	.81 (CR)	.81 (CR)
<u>Sent Paid</u>		
Non-Automated	\$1.24 (CR)	\$1.15
Semi-Automated	1.02 (CR)	.95
<u>Person-to-Person Service(1)</u>		
Non-Automated	\$2.75 (CR)	\$2.75 (CR)
Semi-Automated	2.32 (CR)	2.32 (CR)
<u>Other Services</u>		
Line Status Verification	\$1.39 (CR)	\$1.39 (CR)
Busy Interrupt	2.14 (CR)	2.14 (CR)

- (1) Person-to-Person service may be billed to a calling card, billed to a third number or billed as collect at no additional charge.
- (2) Coin includes all pay type telephones that accept coins, or are coinless, or have a card reader, or a combination of a coin accepting/card reader telephone. For the purposes of applying operator service charges, all telephones that are not defined as "coin" will be treated as "non-coin."

Issued: June 5, 2001

Effective:

Missouri Public
July 5, 2001

By Jan Newton, President-Missouri
Southwestern Bell Telephone Company
St. Louis, Missouri

FILED JUL 05 2001

Service Commission

No supplement to this tariff will be issued except for the purpose of canceling this tariff.

Long Distance Message Telecommunications Service Tariff 10th Revised Sheet 20.01 Replacing 9th Revised Sheet 20.01

LONG DISTANCE MESSAGE TELECOMMUNICATIONS SERVICE

1.4 TWO-POINT SERVICE-(Continued)

Missouri Public Service Commission

1.4.6 Rates-(Continued)

REC'D MAY 31 2000

B. Operator Service Charges-(Continued)

2. Rates

<u>Description</u>	<u>Non-Coin(2) Rate</u>	<u>Coin(2) Rate</u>
<u>Station-to-Station Service</u>		
<u>Calling Card</u>		
Non-Automated	\$1.15 (CR)	\$1.15 (CR)
Semi-Automated	.70 (CR)	.70 (CR)
Fully Automated	.35	.35
<u>Collect</u>		
Non-Automated	\$1.15 (CR)	\$1.15 (CR)
Semi-Automated	.95 (CR)	.95 (CR)
Fully Automated	.75 (CR)	.75 (CR)
<u>Billed to a Third Number</u>		
Non-Automated	\$1.15 (CR)	\$1.15 (CR)
Semi-Automated	.95 (CR)	.95 (CR)
Fully Automated	.75 (CR)	.75 (CR)
<u>Sent Paid</u>		
Non-Automated	\$1.15 (CR)	\$1.15 (CR)
Semi-Automated	.95 (CR)	.95 (CR)
<u>Person-to-Person Service(1)</u>		
Non-Automated	\$2.55 (CR)	\$2.55 (CR)
Semi-Automated	2.15 (CR)	2.15 (CR)
<u>Other Services</u>		
Line Status Verification	\$1.29 (CR)	\$1.29 (CR)
Busy Interrupt	1.99 (CR)	1.99 (CR)

CANCELLED
 JUL 05 2001
 11th RS 20.01
 Missouri Public Service Commission
 MISSOURI

- (1) Person-to-Person service may be billed to a calling card, billed to a third number or billed as collect at no additional charge.
- (2) Coin includes all pay type telephones that accept coins, or are coinless, or have a card reader, or a combination of a coin accepting/card reader telephone. For the purposes of applying operator service charges, all telephones that are not defined as "coin" will be treated as "non-coin."

Missouri Public Service Commission

Issued: June 1, 2000

Effective:

FILED JUL 01 2000
 July 1, 2000

By Jan Newton, President-Missouri Southwestern Bell Telephone Company St. Louis, Missouri

No supplement to this tariff will be issued except for the purpose of canceling this tariff.

Long Distance Message
Telecommunications Service Tariff
9th Revised Sheet 20.01
Replacing 8th Revised Sheet 20.01

RECEIVED

LONG DISTANCE MESSAGE TELECOMMUNICATIONS SERVICE

SEP 30 1996

1.4 TWO-POINT SERVICE-(Continued)

1.4.6 Rates-(Continued)

**MISSOURI
Public Service Commission**

(AT) B. Operator Service Charges-(Continued)

2. Rates	Non-payphone (2) Rate	Payphone (2) Rate
<u>Description</u>		
<u>Station-to-Station Service</u>		
<u>Calling Card</u>		
Non-Automated	\$1.10	\$1.10
Semi-Automated	.65	.65
Fully Automated	.35	.35
<u>Collect</u>		
Non-Automated	\$1.10	\$1.10
Semi-Automated	.90	.90
Fully Automated	.70	.70
<u>Billed to a Third Number</u>		
Non-Automated	\$1.10	\$1.10
Semi-Automated	.90	.90
Fully Automated	.70	.70
<u>Sent Paid</u>		
Non-Automated	\$1.10	\$1.10
Semi-Automated	.90	.90
<u>Person-to-Person Service (1)</u>		
Non-Automated	\$2.40	\$2.40
Semi-Automated	2.00	2.00
<u>Other Services</u>		
Line Status Verification	\$1.20	\$1.20
Busy Interrupt	1.85	1.85

CANCELLED

JUL 01 2000

By 10th RS 20.01

**Public Service Commission
MISSOURI**

FILED

DEC 7 1996

MO.PUBLICSERVICECOMM

- (AT) (1) Person-to-Person service may be billed to a calling card, billed to a third number or billed as collect at no additional charge.
- (AT) (2) Payphone rates apply to all pay type telephones that accept coins, or are coinless, or have a card reader, or a combination of a coin accepting/card reader telephone. Non-payphone rates apply to all other types of calls. This operator services offering will comply with the Commission's decision in Case No. TA-88-218.

Issued:

SEP 30 1996

Effective:

~~SEP 30 1996~~

By KAREN E. JENNINGS, President-Missouri
Southwestern Bell Telephone Company
St. Louis, Missouri

DEC 7 1996

No supplement to this tariff will be issued except for the purpose of canceling this tariff.

Long Distance Message Telecommunications Service Tariff 8th Revised Sheet 20.01 Replacing 7th Revised Sheet 20.01

LONG DISTANCE MESSAGE TELECOMMUNICATIONS SERVICE

FILED

AUG 26 1992

1.4 TWO-POINT SERVICE-(Continued)

1.4.6 Rates-(Continued)

B. Service Charges-(Continued)

Missouri Public Service Commission

- 3. Semi-Automated Calling Card Station-to-Station - For Semi-Automated Calling Card Station-to-Station calls, a charge of \$.65 per call applies.
- 4. Fully-Automated Station-to-Station - For Fully-Automated Station-to-Station calls, a charge of \$.70 per call applies.
- 5. Semi-Automated Station-to-Station - For Semi-Automated Station-to-Station calls, a charge of \$.90 per call applies.
- 6. Operator Station-to-Station - For Operator Station-to-Station calls, a charge of \$1.10 per call applies.
- 7. Semi-Automated Person-to-Person - For Semi-Automated Person-to-Person calls, a charge of \$2.00 per call applies.
- 8. Operator Person-to-Person - For Operator Person-to-Person calls, a charge of \$2.40 per call applies.
- 9. Line Status Verification - For Line Status Verification requests, a charge of \$1.20 per request applies as described in the Local Exchange Tariff.
- 10. Busy Interrupt - For Busy Interrupt requests, a charge of \$1.85 per request applies as described in the Local Exchange Tariff.

(AT)

During the period from October 1, 1992, through January 1, 1993, randomly selected existing Southwestern Bell Telephone Company Calling Card customers will be invited to participate in a special incentive promotion. This special incentive offer will be limited to residence customers in the St. Louis metropolitan area and will apply to intraLATA Calling Card calls made during the promotional period. Selected customers will receive promotional information through the

(AT)

(MT)

(MT)

DEC 7 1995
BY 9th R.S. # 20.01
Public Service Commission
MISSOURI

FILED

SEP 23 1992

MO. PUBLIC SERVICE COMM.

Issued: AUG 26 1992

Effective: SEP 26 1992

By A. D. ROBERTSON, Assistant Vice President-External Affairs
Southwestern Bell Telephone Company
St. Louis, Missouri

No supplement to this tariff will be issued except for the purpose of canceling this tariff.

Long Distance Message Telecommunications Service Tariff 7th Revised Sheet 20.01 Replacing 6th Revised Sheet 20.01

LONG DISTANCE MESSAGE TELECOMMUNICATIONS SERVICE

RECEIVED

JAN 22 1991

1.4 TWO-POINT SERVICE--(Continued)

1.4.6 Rates--(Continued)

MO. PUBLIC SERVICE COMM.

B. Service Charges--(Continued)

- (AT) (NR) 3. Semi-Automated Calling Card Station-to-Station - For Semi-Automated Calling Card Station-to-Station calls, a charge of \$.65 per call applies.
- (AT) (NR) 4. Fully-Automated Station-to-Station - For Fully-Automated Station-to-Station calls, a charge of \$.70 per call applies.
- (AT) (NR) 5. Semi-Automated Station-to-Station - For Semi-Automated Station-to-Station calls, a charge of \$.90 per call applies.
- (FC) (RT) (CR) 6. Operator Station-to-Station - For Operator Station-to-Station calls, a charge of \$1.10 per call applies.
- (AT) (AT) (NR) 7. Semi-Automated Person-to-Person - For Semi-Automated Person-to-Person calls, a charge of \$2.00 per call applies.
- (FC) (AT) 8. Operator Person-to-Person - For Operator Person-to-Person calls, a charge of \$2.40 per call applies.
- (FC) 9. Line Status Verification - For Line Status Verification requests, a charge of \$1.20 per request applies as described in the Local Exchange Tariff.
- (FC) 10. Busy Interrupt - For Busy Interrupt requests, a charge of \$1.85 per request applies as described in the Local Exchange Tariff.

CANCELLED
SEP 26 1992
BY 8th RS # 20.01
Public Service Commission

C. Timing of Messages

- (CT) (RT) 1. On all classes of Station-to-Station calls, chargeable time begins when connection is established between the calling telephone and the called telephone, mobile telephone system or other customer premises equipment.
- (AT) 2. On all classes of Person-to-Person messages, chargeable time begins when connection is established between the calling person and the particular person or service point specified or an agreed-upon alternate.

Issued: JAN 22 1991

Effective: JAN 13 1992

FILED

By R. D. BARRON, President-Missouri Division
Southwestern Bell Telephone Company
St. Louis, Missouri

JAN 13 1992
91-278
Public Service Commission

No supplement to this tariff will be issued except for the purpose of canceling this tariff.

Long Distance Message Telecommunications Service Tariff
6th Revised Sheet 20.01
Replacing 5th Revised Sheet 20.01

LONG DISTANCE MESSAGE TELECOMMUNICATIONS SERVICE

RECEIVED
JUN 27 1986
MISSOURI
Public Service Commission

1.4 TWO-POINT SERVICE-(Continued)

1.4.6 Rates-(Continued)

B. Service Charges-(Continued)

- 3. Operator Station-to-Station - For operator station-to-station calls or calls to a Special Billing number, a charge of \$1.05 per call applies.
- 4. Person-to-Person - For person-to-person calls, a charge of \$2.40 per call applies.
- (CR) 5. Line Status Verification - For Line Status Verification requests, a charge of \$1.20 per request applies as described in the Local Exchange Tariff.
- (CR) 6. Busy Interrupt - For Busy Interrupt requests, a charge of \$1.85 per request applies as described in the Local Exchange Tariff.

C. Timing of Messages

- 1. On Dial Station-to-Station, Dial Calling Card Station-to-Station or Operator Station-to-Station calls, chargeable time begins when connection is established between the calling telephone and the called telephone, mobile telephone system or other customer premises equipment.
- 2. On Person-to-Person messages, chargeable time begins when connection is established between the calling person and the particular person or service point specified or an agreed-upon alternate.

CANCELLED

JAN 13 1992
BY 7th R.S. #20.01

Public Service Commission
MISSOURI

FILED
JUL 1 1986
86-84
Public Service Commission

Issued: JUN 27 1986

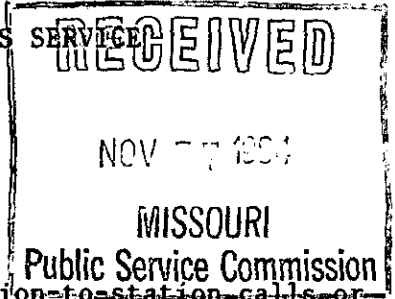
Effective: JUL 1 1986

By R. D. BARRON, President-Missouri Division
Southwestern Bell Telephone Company
St. Louis, Missouri

No supplement to this tariff will be issued except for the purpose of canceling this tariff.

Long Distance Message Telecommunications Service Tariff 5th Revised Sheet 20.01 Replacing 4th Revised Sheet 20.01

LONG DISTANCE MESSAGE TELECOMMUNICATIONS SERVICE



1.4 TWO-POINT SERVICE-(Continued)

1.4.6 Rates-(Continued)

B. Service Charges-(Continued)

- 3. Operator Station-to-Station - For operator station-to-station calls or calls to a Special Billing number, a charge of \$1.05 per call applies.
- 4. Person-to-Person - For person-to-person calls, a charge of \$2.40 per call applies.
- (NR) 5. Line Status Verification - For Line Status Verification requests, a charge of \$.40 per request applies as described in the Local Exchange Tariff.
- (NR) 6. Busy Interrupt - For Busy Interrupt requests, a charge of \$.75 per request applies as described in the Local Exchange Tariff.

C. Timing of Messages

- 1. On Dial Station-to-Station, Dial Calling Card Station-to-Station or Operator Station-to-Station calls, chargeable time begins when connection is established between the calling telephone and the called telephone, mobile telephone system or other customer premises equipment.
- 2. On Person-to-Person messages, chargeable time begins when connection is established between the calling person and the particular person or service point specified or an agreed-upon alternate.

(MT)

CANCELLED

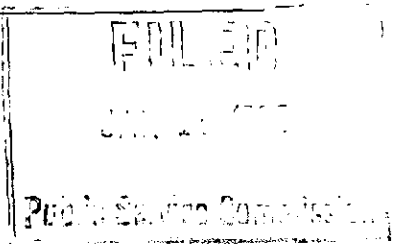
JUL 1 1986

BY 6th R.S.# 20.01
PUBLIC SERVICE COMMISSION
OF MISSOURI

Issued: NOV 5 1984

Effective: JAN 15 1985

By R. D. BARRON, President-Missouri Division
Southwestern Bell Telephone Company
St. Louis, Missouri



No supplement to this tariff will be issued except for the purpose of canceling this tariff.

Long Distance Message Telecommunications Service Tariff 4th Revised Sheet 20.01 Replacing 3rd Revised Sheet 20.01

LONG DISTANCE MESSAGE TELECOMMUNICATIONS SERVICE

RECEIVED
DEC 29 1983
MISSOURI
Public Service Commission

1.4 TWO-POINT SERVICE-(Continued)

1.4.6 Rates-(Continued)

B. Service Charges-(Continued)

- (MT) 3. Operator Station-to-Station - For operator station-to-station calls or calls to a Special Billing number, a charge of \$1.05 per call applies.
- 4. Person-to-Person - For person-to-person calls, a charge of \$2.40 per call applies.

C. Timing of Messages

- (CT) 1. On Dial Station-to-Station, Dial Calling Card Station-to-Station or Operator Station-to-Station calls, chargeable time begins when connection is established between the calling telephone and the called telephone, mobile telephone system or other customer premises equipment.
- (CT) 2. On Person-to-Person messages, chargeable time begins when connection is established between the calling person and the particular person or service point specified or an agreed-upon alternate.
- (CT) 3. Chargeable time ends when the calling service point "hangs up" thereby releasing the network connection. If the called service point "hangs up" but the calling service point does not, chargeable time ends when the network connection is released either by automatic timing equipment in the telephone network or by the Telephone Company operator.
- 4. Chargeable time does not include time lost because of faults or defects in service.
- 5. When exchange telephone service used for Long Distance Message Telecommunications Service is directly connected (i.e., not connected through a Multiline Terminating System) at a customer's premises to a communication's system, chargeable time for all classes of calls begins when a call from the telecommunications network terminates in or passes through the first multiline terminating system or terminal equipment on that communications system. It is the customer's responsibility to furnish appropriate answer supervision to the point of connection with the exchange telephone service so that chargeable time may begin.

JAN 15 1985
BY: *50 RS 20.01*
PUBLIC SERVICE COMMISSION

JAN - 1 1984
83 - 253
Public Service Commission

Issued: DEC 29 1983

Effective: JAN 01 1984

By R. D. BARRON, Vice President-Missouri
Southwestern Bell Telephone Company
St. Louis, Missouri

No supplement to this tariff will be issued except for the purpose of canceling this tariff.

Long Distance Message Telecommunications Service Tariff 3rd Revised Sheet 20.01 Replacing 2nd Revised Sheet 20.01

LONG DISTANCE MESSAGE TELECOMMUNICATIONS SERVICE

RECEIVED
DEC 7 1981
MISSOURI
Public Service Commission

1.4 TWO-POINT SERVICE-(Continued)

1.4.6 Rates-(Continued)

B. Service Charges-(Continued)

4. Person-to-Person - For person-to-person calls, a charge of \$2.40 per call applies.

C. Timing of Messages

(CT)

1. On Dial Station-to-Station, Dial Credit Card Station-to-Station or Operator Station-to-Station calls, chargeable time begins when connection is established between the calling telephone and the called telephone, Miscellaneous Common Carrier mobile telephone system or private branch exchange system.
2. On Person-to-Person messages, chargeable time begins when connection is established between the calling person and the particular person or station specified or an agreed alternate.
3. Chargeable time ends when the calling station "hangs up" thereby releasing the network connection. If the called station "hangs up" but the calling station does not, chargeable time ends when the network connection is released either by automatic timing equipment in the telephone network or by the Telephone Company operator.
4. Chargeable time does not include time lost because of faults or defects in service.
5. When exchange telephone service used for Long Distance Message Telecommunications Service is directly connected (i.e., not connected through a Multiline Terminating System) at a customer's premises to a communication's system, chargeable time for all classes of calls begins when a call from the telecommunications network terminates in or passes through the first multiline terminating system or terminal equipment on that communications system. It is the customer's responsibility to furnish appropriate answer supervision to the point of connection to the exchange telephone service so that chargeable time may be avoided.

~~CANCELLED~~
JAN - 1 1984
BY *H. R. S.* 20.01
PUBLIC SERVICE COMMISSION
OF MISSOURI

Issued:

DEC 07 1981

Effective:

DEC 09 1981

BY R. R. SHOCKLEY, Vice President-Missouri
Southwestern Bell Telephone Company
St. Louis, Missouri

FILED
DEC - 9 1981
81-208
Public Service Commission

No supplement to this tariff will be issued except for the purpose of canceling this tariff.

Long Distance Message Telecommunications Service Tariff
2nd Revised Sheet 20.01
Replacing 1st Revised Sheet 20.01

LONG DISTANCE MESSAGE TELECOMMUNICATIONS SERVICE

RECEIVED

1.4 TWO-POINT SERVICE-(Continued)

1.4.6 Rates-(Continued)

OCT 23 1980

C. Timing of Messages

1. On Dial Station-to-Station or Operator Station-to-Station messages, chargeable time begins when connection is established between the calling station and the called station, Miscellaneous Common Carrier, mobile telephone system or private branch exchange system.
2. On Person-to-Person messages, chargeable time begins when connection is established between the calling person and the particular person or station specified or an agreed alternate.
3. Chargeable time ends when the calling station "hangs up" thereby releasing the network connection. If the called station "hangs up" but the calling station does not, chargeable time ends when the network connection is released either by automatic timing equipment in the telephone network or by the Telephone Company operator.
4. Chargeable time does not include time lost because of faults or defects in service.
5. When exchange telephone service used for Long Distance Message Telecommunications Service is directly connected (i.e., not connected through a Multiline Terminating System) at a customer's premises to a communication's system, chargeable time for all classes of calls begins when a call from the telecommunications network terminates in or passes through the first multiline terminating system or terminal equipment on that communications system. It is the customer's responsibility to furnish appropriate answer supervision to the point of connection with the exchange telephone service so that chargeable time may begin.

(CT)

CANCELLED

DEC - 9 1981
BY 3 RS 20.01
PUBLIC SERVICE COMMISSION
OF MISSOURI

FILED

NOV 23 1980

Issued: OCT 24 1980

Effective: NOV 24 1980

BY R. R. SHOCKLEY, Vice President-Missouri
Southwestern Bell Telephone Company
St. Louis, Missouri

No supplement to this tariff will be issued except for the purpose of canceling this tariff.

Long Distance Message
Telecommunications Service Tariff
1st Revised Sheet 20.01
Replacing Original Sheet 20.01

LONG DISTANCE MESSAGE TELECOMMUNICATIONS SERVICE

1.4 TWO-POINT SERVICE-(Continued)

1.4.6 Rates-(Continued)

C. Timing of Messages

- (CT) 1. On Dial Station-to-Station and Operator Station-to-Station messages, chargeable time begins when connection is established between the calling station and the called station, Miscellaneous Common Carrier, mobile telephone system or private branch exchange system.
- (CT) 2. On Person-to-Person messages, chargeable time begins when connection is established between the calling person and the particular person or station specified or an agreed alternate.
- (CT) 3. Chargeable time ends when the calling station "hangs up" thereby releasing the network connection. If the called station "hangs up" but the calling station does not, chargeable time ends when the network connection is released either by automatic timing equipment in the telephone network or by the Telephone Company operator.
- 4. Chargeable time does not include time lost because of faults or defects in service.
- (AT) 5. When exchange telephone service used for Long Distance Message Telecommunications Service is connected through a Service Terminating Arrangement or Connecting Arrangement (i.e., not connected through a Multiline Terminating System or Terminal Equipment) at a customer's premises to a communications system, chargeable time for all classes of calls begins when a call from the telecommunications network terminates in or passes through the first multiline terminating system or terminal equipment on that communications system. It is the customer's responsibility to furnish appropriate answer supervision to the point of connection with the exchange telephone service so that chargeable time may begin.

RECEIVED

JUN 09 1980

CANCELLED

NOV 23 1980

BY 2nd RS# 20.01
PUBLIC SERVICE COMMISSION
OF MISSOURI

JUL 20 1980

Issued: JUN 20 1980

Effective: JUL 20 1980

BY R. R. SHOCKLEY, Vice President-Missouri
Southwestern Bell Telephone Company
St. Louis, Missouri

No supplement to this tariff will be issued except for the purpose of canceling this tariff.

Long Distance Message Telecommunications Service Tariff Original Sheet 20.01

LONG DISTANCE MESSAGE TELECOMMUNICATIONS SERVICE

1.4 TWO-POINT SERVICE-(Continued)

(CT)1.4.6 Rates-(Continued)

(CT) C. Timing of Messages

1. On Dial Station-to-Station or Operator Station-to-Station calls, chargeable time begins when connection is established between the calling telephone and the called telephone, Miscellaneous Common Carrier mobile telephone system or private branch exchange system.
2. On Person-to-Person calls, chargeable time begins when connection is established between the calling person and the particular person or station specified or an agreed alternate.
3. Chargeable time ends when the connection is terminated at any point.
4. Chargeable time does not include time lost because of faults or defects in service.

RECEIVED

JULY 28 1975

MISSOURI

Public Service Commission

CANCELLED

JUL 20 1980
BY Just R.S. # 20.01
PUBLIC SERVICE COMMISSION
OF MISSOURI

FILED
JUN 4 1975
Case # 17898
Public Service Commission

Issued: May 30, 1975

Effective: June 4, 1975

BY R. R. SHOCKLEY, Vice President-Missouri
Southwestern Bell Telephone Company
St. Louis, Missouri

LONG DISTANCE MESSAGE TELECOMMUNICATIONS SERVICE TARIFF

Southwestern Bell Telephone, L.P.
d/b/a AT&T Missouri

3rd Revised Sheet 20.0101
Replacing 2nd Revised Sheet 20.0101

LONG DISTANCE MESSAGE TELECOMMUNICATIONS SERVICE

1.4 Two-Point Service (cont'd)

1.4.6 Rates (cont'd)

B. Operator Service Charges (cont'd)

2. Rates (cont'd)

<u>Description</u>	<u>Non-Coin(2) Rate</u>	<u>Coin(2) Rate</u>
<u>Person-to-Person Service(1)</u>		
Non-Automated	\$3.73(CR)	\$3.73(CR)
Semi-Automated	3.17(CR)	3.17(CR)
<u>Other Services</u>		
Line Status Verification	1.62	1.62
Busy Interrupt	2.49	2.49

- (1) Person-to-Person service may be billed to a calling card, billed to a third number or billed as collect at no additional charge.
- (2) Coin includes all pay type telephones that accept coins, or are coinless, or have a card reader, or a combination of a coin accepting/card reader telephone. For the purposes of applying operator service charges, all telephones that are not defined as "coin" will be treated as "non-coin".

Issued: September 1, 2006

Effective: October 1, 2006

By CINDY BRINKLEY, President – Missouri
St. Louis, Missouri

No Supplement to this tariff will be issued except for the purpose of canceling this tariff.

Long Distance Message Telecommunications Service Tariff
2nd Revised Sheet 20.0101
Replacing 1st Revised Sheet 20.0101

LONG DISTANCE MESSAGE TELECOMMUNICATIONS SERVICE

1.4 TWO-POINT SERVICE (cont'd)

1.4.6 Rates (cont'd)

B. Operator Service Charges (cont'd)

2. Rates (cont'd)

Description	Non-Coin(2) Rate	Coin(2) Rate
<u>Person-to-Person Service(1)</u>		
Non-Automated	\$3.56(CR)	\$3.56(CR)
Semi-Automated	3.02(CR)	3.02(CR)
<u>Other Services</u>		
Line Status Verification	1.62	1.62
Busy Interrupt	2.49	2.49

- (1) Person-to-Person service may be billed to a calling card, billed to a third number or billed as collect at no additional charge.
- (2) Coin includes all pay type telephones that accept coins, or are coinless, or have a card reader, or a combination of a coin accepting/card reader telephone. For the purposes of applying operator service charges, all telephones that are not defined as "coin" will be treated as "non-coin".

Issued: June 30, 2004

Effective: July 10, 2004

By CINDY BRINKLEY, President-SBC Missouri
Southwestern Bell Telephone, L.P., d/b/a SBC Missouri
St. Louis, Missouri

Cancelled

October 1, 2006

Missouri Public Service Commission

Filed

Missouri Public Service Commission

REC'D JUN 10 2003

No Supplement to this
tariff will be issued
except for the purpose
of canceling this tariff.

Long Distance Message
Telecommunications Service Tariff
1st Revised Sheet 20.0101
Replacing Original Sheet 20.0101

LONG DISTANCE MESSAGE TELECOMMUNICATIONS SERVICE

1.4 TWO-POINT SERVICE (cont'd)

1.4.6 Rates (cont'd)

B. Operator Service Charges (cont'd)

2. Rates (cont'd)

Description	Non-Coin(2) Rate	Coin(2) Rate
<u>Person-to-Person Service(1)</u>		
Non-Automated	\$3.30	\$3.30
Semi-Automated	2.80	2.80
<u>Other Services</u>		
Line Status Verification	1.62(CR)	1.62(CR)
Busy Interrupt	2.49(CR)	2.49(CR)

CANCELLED

JUL 10 2004
By 2nd ps 20.0101
Public Service Commission
MISSOURI

- (1) Person-to-Person service may be billed to a calling card, billed to a third number or billed as collect at no additional charge.
- (2) Coin includes all pay type telephones that accept coins, or are coinless, or have a card reader, or a combination of a coin accepting/card reader telephone. For the purposes of applying operator service charges, all telephones that are not defined as "coin" will be treated as "non-coin".

Issued: June 10, 2003

Effective: July 10, 2003

By CINDY BRINKLEY, President-SBC Missouri
Southwestern Bell Telephone, L.P., d/b/a SBC Missouri
St. Louis, Missouri

Missouri Public
Service Commission

FILED JUL 10 2003

No Supplement to this tariff will be issued except for the purpose of canceling this tariff.

Long Distance Message
Telecommunications Service Tariff
Original Sheet 20.0101

LONG DISTANCE MESSAGE TELECOMMUNICATIONS SERVICE

(MT) 1.4 TWO-POINT SERVICE (cont'd)

1.4.6 Rates (cont'd)

B. Operator Service Charges (cont'd)

2. Rates (cont'd)

Description	Non-Coin(2) Rate	Coin(2) Rate
<u>Person-to-Person Service(1)</u>		
Non-Automated	\$ 3.30(CR)	\$ 3.30(CR)
Semi-Automated	2.80(CR)	2.80(CR)
<u>Other Services</u>		
Line Status Verification	1.50	1.50
Busy Interrupt	2.31	2.31

CANCELLED

JUL 1 '0 2003
by 1st RS 20.0101
Public Service Commission
MISSOURI

- (1) Person-to-Person service may be billed to a calling card, billed to a third number or billed as collect at no additional charge.
- (2) Coin includes all pay type telephones that accept coins, or are coinless, or have a card reader, or a combination of a coin accepting/card reader telephone. For the purposes of applying operator service charges, all telephones that are not defined as "coin" will be treated as "non-coin."

(MT)

Issued: May 9, 2003

Effective: ~~May 21, 2003~~
May 30, 2003

By CINDY BRINKLEY, President-SBC Missouri
Southwestern Bell Telephone, L.P., d/b/a SBC Missouri
St. Louis, Missouri

Filed

MO PSC

No supplement to this tariff will be issued except for the purpose of canceling this tariff.

Long Distance Message Telecommunications Service Tariff
1st Revised Sheet 20.02
Replacing Original Sheet 20.02

LONG DISTANCE MESSAGE TELECOMMUNICATIONS SERVICE

1.4 TWO-POINT SERVICE-(Continued)

1.4.6 Rates

(MT)

C. Timing of Messages

1. On all classes of Station-to-Station calls, chargeable time begins when connection is established between the calling telephone and the called telephone, mobile telephone system or other customer premises equipment.
2. On all classes of Person-to-Person messages, chargeable time begins when connection is established between the calling person and the particular person or service point specified or an agreed-upon alternate.
3. Chargeable time ends when the calling service point "hands up" thereby releasing the network connection. If the called service point "hangs up" but the calling service point does not, chargeable time ends when the network connection is released either by automatic timing equipment in the telephone network or by the Telephone Company operator.
4. Chargeable time does not include time lost because of faults or defects in service.
5. When exchange telephone service used for Long Distance Message Telecommunications Service is directly connected (i.e., not connected through a Multiline Terminating System) at a customer's premises to a communication's system, chargeable time for all classes of calls begins when a call from the telecommunications network terminates in or passes through the first multiline terminating system or terminal equipment on that communications system. It is the customer's responsibility to furnish appropriate answer supervision to the point of connection with the exchange telephone service so that chargeable time may begin.

(MT)

Issued: August 26, 1992

Effective: September 26, 1992

By A.D. ROBERTSON, Assistant Vice President-External Affairs
Southwestern Bell Telephone Company
St. Louis, Missouri

No supplement to this tariff will be issued except for the purpose of canceling this tariff.

Long Distance Message Telecommunications Service Tariff Original Sheet 20.02

LONG DISTANCE MESSAGE TELECOMMUNICATIONS SERVICE

RECEIVED
NOV - 7 1984
MISSOURI
Public Service Commission

1.4 TWO-POINT SERVICE-(Continued)

1.4.6 Rates-(Continued)

C. Timing of Messages-(Continued)

- (MT) 3. Chargeable time ends when the calling service point "hangs up" thereby releasing the network connection. If the called service point "hangs up" but the calling service point does not, chargeable time ends when the network connection is released either by automatic timing equipment in the telephone network or by the Telephone Company operator.
- 4. Chargeable time does not include time lost because of faults or defects in service.
- 5. When exchange telephone service used for Long Distance Message Telecommunications Service is directly connected (i.e., not connected through a Multiline Terminating System) at a customer's premises to a communication's system, chargeable time for all classes of calls begins when a call from the telecommunications network terminates in or passes through the first multiline terminating system or terminal equipment on that communications system. It is the customer's responsibility to furnish appropriate answer supervision to the point of connection with the exchange telephone service so that chargeable time may begin.

CANCELLED

SEP 26 1992
BY *let RS # 20.02*
Public Service Commission
MISSOURI

Issued: NOV 5 1984

Effective: JAN 15 1985

By R. D. BARRON, President-Missouri Division
Southwestern Bell Telephone Company
St. Louis, Missouri

FILED
JAN 15 1985
Public Service Commission

LONG DISTANCE MESSAGE TELECOMMUNICATIONS SERVICE TARIFF

Southwestern Bell Telephone, L.P.
d/b/a AT&T Missouri

25th Revised Sheet 21
Replacing 24th Revised Sheet 21

LONG DISTANCE MESSAGE TELECOMMUNICATIONS SERVICE

1.4 TWO-POINT SERVICE (cont'd)

1.4.7 Rate Table

- A. Rates shown in the following tables are applicable to intrastate, intraLATA business between all points within the State of Missouri.

	Day Period 1 Minute(1)	Evening Period 1 Minute(1)	Night and Weekend Period 1 Minute(1)
Residence	\$0.27	\$0.22	\$0.17
Business	0.317(CR)	0.219(CR)	0.219(CR)

(1) Initial period rates and additional minute rates are identical.

Issued: December 1, 2006

Effective: January 1, 2007

By CINDY BRINKLEY, President – Missouri
St. Louis, Missouri

No Supplement to this tariff will be issued except for the purpose of canceling this tariff.

Long Distance Message Telecommunications Service Tariff
24th Revised Sheet 21
Replacing 23rd Revised Sheet 21

LONG DISTANCE MESSAGE TELECOMMUNICATIONS SERVICE

1.4 TWO-POINT SERVICE (cont'd)

1.4.7 Rate Table

- A. Rates shown in the following tables are applicable to intrastate, intraLATA business between all points within the State of Missouri.

	<u>Day Period</u> <u>1 Minute(1)</u>	<u>Evening Period</u> <u>1 Minute(1)</u>	<u>Night and Weekend Period</u> <u>1 Minute(1)</u>
Residence	\$0.27(CR)	\$0.22(CR)	\$0.17(CR)
Business	0.302(CR)	0.209(CR)	0.209(CR)

(1) Initial period rates and additional minute rates are identical.

Issued: July 2, 2004

Effective: July 15, 2004

By CINDY BRINKLEY, President-SBC Missouri
Southwestern Bell Telephone, L.P., d/b/a SBC Missouri
St. Louis, Missouri

Filed
MO PSC

Cancelled

January 1, 2007

No Supplement to this tariff will be issued except for the purpose of canceling this tariff.

Long Distance Message Telecommunications Service Tariff 23rd Revised Sheet 21 Replacing 22nd Revised Sheet 21

LONG DISTANCE MESSAGE TELECOMMUNICATIONS SERVICE

(CT) 1.4 TWO-POINT SERVICE (cont'd)

1.4.7 Rate Table

A. Rates shown in the following tables are applicable to intrastate, intraLATA business between all points within the State of Missouri.

(CT)		Day Period 1 Minute(1)	Evening Period 1 Minute(1)	Night and Weekend Period 1 Minute(1)
	Residence	\$0.25(CR)	\$0.20(CR)	\$0.15(CR)
	Business	0.28(CR)	0.194(CR)	0.194(CR)

CANCELLED

JUL 1 5 2004
By JAH/RS 21
Public Service Commission
MISSOURI

(CT) (1) Initial period rates and additional minute rates are identical.

Issued: May 9, 2003

Effective: ~~May 21, 2003~~

May 30, 2003

By CINDY BRINKLEY, President-SBC Missouri
Southwestern Bell Telephone, L.P., d/b/a SBC Missouri
St. Louis, Missouri

Filed

MO PSC

No Supplement to this tariff will be issued except for the purpose of canceling this tariff.

Long Distance Message Telecommunications Service Tariff
22nd Revised Sheet 21
Replacing 21st Revised Sheet 21

LONG DISTANCE MESSAGE TELECOMMUNICATIONS SERVICE **Missouri Public**

1.4 TWO-POINT SERVICE-(Continued)

REC'D APR 02 2002

1.4.7 Rate Table

Service Commission

A. Rates shown in the following tables are applicable to intrastate, intraLATA business between all points within the State of Missouri.

(CT)		Day Period	Evening Period	Night and Weekend Period
(CT)		<u>1 Minute /1/</u>	<u>1 Minute /1/</u>	<u>1 Minute /1/</u>
(CR)	Residence	\$0.24	\$0.17	\$0.14
(CR)	Business	\$0.26	\$0.18	\$0.18

(RT)

CANCELLED
MAY 30, 2003
~~AUG 01 2004~~
By *29* **RS 21**
Public Service Commission
MISSOURI

(RT)

(CT) /1/ Initial period rates and additional minute rates are identical

Issued: April 2, 2002

Effective: May 2, 2002

By JAN NEWTON, President-Missouri
Southwestern Bell Telephone, L.P., d/b/a Southwestern Bell Telephone Company
St. Louis, Missouri

Missouri Public

FILED MAY 02 2002

02-1057
Service Commission

No Supplement to this tariff will be issued except for the purpose of canceling this tariff.

Long Distance Message
Telecommunications Service Tariff
21st Revised Sheet 21
Replacing 20th Revised Sheet 21

LONG DISTANCE MESSAGE TELECOMMUNICATIONS SERVICE **Missouri Public**

1.4 TWO-POINT SERVICE-(Continued)

REC'D MAR 26 2002

1.4.7 Rate Table

Service Commission

A. Rates shown in the following tables are applicable to intrastate, intraLATA business between all points within the State of Missouri.

(RT)

Mileage	Initial 1 Minute (1)		Each Additional Minute (1)	
	Minimum	Maximum	Minimum	Maximum
1 - 10	\$.0825	\$.1166	\$.0650	\$.0928
11 - 14	.1175	.1393	.0925	.1166
15 - 18	.1425	.1749	.1175	.1512
19 - 23	.1700	.2332	.1375	.1749
24 - 28	.1975	.2797	.1575	.1857
29 - 33	.1975	.3142	.1575	.1976
34 - 40	.1975	.3499	.1575	.2095
41 - 50	.2225	.3963	.1900	.2332
51 - 60	.2225	.4309	.1900	.2678
61 - 80	.2225	.4665	.1900	.2916
81 - 100	.2500	.4665	.2225	.2916
101 - 125	.2500	.4892	.2225	.3142
126 - 150	.2500	.4892	.2225	.3142
151 - 190	.2500	.5011	.2225	.3726
191 - 300	.2500	.5130	.2225	.3844
301 - 430	.2500	.5356	.2225	.4082

CANCELLED

MAY 02 2002
22nd RS 21
Public Service Commission
MISSOURI

Missouri Public

FILED APR 02 2002

(1) See Supplemental Schedule for current effective rates.

Service Commission

Issued: March 26, 2002

Effective: April 2, 2002

By JAN NEWTON, President-Missouri
Southwestern Bell Telephone, L.P., d/b/a Southwestern Bell Telephone Company
St. Louis, Missouri

No Supplement to this tariff will be issued except for the purpose of canceling this tariff.

Long Distance Message
Telecommunications Service Tariff
20th Revised Sheet 21
Replacing 19th Revised Sheet 21

LONG DISTANCE MESSAGE TELECOMMUNICATIONS SERVICE Missouri Public

1.4 TWO-POINT SERVICE-(Continued)

REC'D MAR 30 2001

1.4.7 Rate Table

A. Rates shown in the following tables are applicable to intrastate, intraLATA business between all points within the State of Missouri. Service Commission

Mileage	Day Initial 1 Minute (1)		Day Each Additional Minute (1)	
	Minimum	Maximum	Minimum	Maximum
1 - 10	\$.0825	\$.1166 (CR)	\$.0650	\$.0928 (CR)
11 - 14	.1175	.1393	.0925	.1166
15 - 18	.1425	.1749	.1175	.1512
19 - 23	.1700	.2332	.1375	.1749
24 - 28	.1975	.2797	.1575	.1857
29 - 33	.1975	.3142	.1575	.1976
34 - 40	.1975	.3499	.1575	.2095
41 - 50	.2225	.3963	.1900	.2332
51 - 60	.2225	.4309	.1900	.2678
61 - 80	.2225	.4665	.1900	.2916
81 - 100	.2500	.4665	.2225	.2916
101 - 125	.2500	.4892	.2225	.3142
126 - 150	.2500	.4892	.2225	.3142
151 - 190	.2500	.5011	.2225	.3726
191 - 300	.2500	.5130	.2225	.3844
301 - 430	.2500	.5356 (CR)	.2225	.4082 (CR)

CANCELLED

APR 02 2002
Public Service Commission
MISSOURI

Missouri Public

FILED MAY 01 2001

Service Commission

(1) See Supplemental Schedule for current effective rates.

Issued: March 30, 2001

Effective: May 1, 2001

By JAN NEWTON, President-Missouri
Southwestern Bell Telephone Company
St. Louis, Missouri

No supplement to this tariff will be issued except for the purpose of canceling this tariff.

Long Distance Message
Telecommunications Service Tariff
19th Revised Sheet 21
Replacing 18th Revised Sheet 21

RECEIVED

LONG DISTANCE MESSAGE TELECOMMUNICATIONS SERVICE

1.4 TWO-POINT SERVICE-(Continued)

MAR 30 2000

1.4.7 Rate Table

**MISSOURI
Public Service Commission**

A. Rates shown in the following table are applicable to intrastate, intraLATA business between all points within the State of Missouri.

Mileage	Day Initial 1 Minute (1)		Day Each Additional Minute (1)	
	Minimum	Maximum	Minimum	Maximum
1 - 10	\$.0825	\$.1080 (CR)	\$.0650	\$.0860 (CR)
11 - 14	.1175	.1290	.0925	.1080
15 - 18	.1425	.1620	.1175	.1400
19 - 23	.1700	.2160	.1375	.1620
24 - 28	.1975	.2590	.1575	.1720
29 - 33	.1975	.2910	.1575	.1830
34 - 40	.1975	.3240	.1575	.1940
41 - 50	.2225	.3670	.1900	.2160
51 - 60	.2225	.3990	.1900	.2480
61 - 80	.2225	.4320	.1900	.2700
81 - 100	.2500	.4320	.2225	.2700
101 - 125	.2500	.4530	.2225	.2910
126 - 150	.2500	.4530	.2225	.2910
151 - 190	.2500	.4640	.2225	.3450
191 - 300	.2500	.4750	.2225	.3560
301 - 430	.2500	.4960 (CR)	.2225	.3780 (CR)

CANCELLED

MAY 01 2001
20th RS 21
Public Service Commission
MISSOURI

FILED

MAY 01 2000

**MISSOURI
Public Service Commission**

(1) See Supplemental Schedule for current effective rates.

Issued: MARCH 30, 2000

Effective: MAY 1, 2000

By JAN NEWTON, President-Missouri
Southwestern Bell Telephone Company
St. Louis, Missouri

No supplement to this tariff will be issued except for the purpose of canceling this tariff.

Long Distance Message
Telecommunications Service Tariff
18th Revised Sheet 21
Replacing 17th Revised Sheet 21

LONG DISTANCE MESSAGE TELECOMMUNICATIONS SERVICE **RECEIVED**

1.4 TWO-POINT SERVICE-(Continued)

NOV 21 1997

CANCELLED

MO. PUBLIC SERVICE COMM

(RT)

(RT)

(FC)

1.4.7 Rate Table

MAY 01 2000
By 195 R S 21
Public Service Commission
MISSOURI

A. Rates shown in the following table are applicable to intrastate, intraLATA business between all points within the State of Missouri.

Mileage	Day Initial 1 Minute (1)		Day Each Additional Minute (1)	
	Minimum	Maximum	Minimum	Maximum
1 - 10	\$.0825	\$.1000	\$.0650	\$.0800
11 - 14	.1175	.1200	.0925	.1000
15 - 18	.1425	.1500	.1175	.1300
19 - 23	.1700	.2000	.1375	.1500
24 - 28	.1975	.2400	.1575	.1600
29 - 33	.1975	.2700	.1575	.1700
34 - 40	.1975	.3000	.1575	.1800
41 - 50	.2225	.3400	.1900	.2000
51 - 60	.2225	.3700	.1900	.2300
61 - 80	.2225	.4000	.1900	.2500
81 - 100	.2500	.4000	.2225	.2500
101 - 125	.2500	.4200	.2225	.2700
126 - 150	.2500	.4200	.2225	.2700
151 - 190	.2500	.4300	.2225	.3200
191 - 300	.2500	.4400	.2225	.3300
301 - 430	.2500	.4600	.2225	.3500

FILED

DEC 24 1997

(1) See Supplemental Schedule for current effective rates.

Issued: NOV 24 1997

MISSOURI
Public Service Commission
Effective: DEC 24 1997

No supplement to this tariff will be issued except for the purpose of canceling this tariff.

Long Distance Message Telecommunications Service Tariff
17th Revised Sheet 21
Replacing 16th Revised Sheet 21

RECEIVED

LONG DISTANCE MESSAGE TELECOMMUNICATIONS SERVICE

SEP 30 1996

1.4 TWO-POINT SERVICE-(Continued)

1.4.7 Charges Paid for by Coin Deposits in a Public or Semi-Public Telephone. **MISSOURI Public Service Commission**

The charge for a call paid for by coin deposit in a public or semi-public coin telephone is the sum, rounded to the nearer multiple of \$.05, of the appropriate initial period rate, additional period rates and service charges. In addition, applicable taxes, fees and charges as specified in Paragraph 1.2.14, preceding, will apply.

1.4.8 Rate Table

A. Rates shown in the following table are applicable to intrastate, intra-LATA business between all points within the State of Missouri.

CANCELLED

(RT)

(RT)

DEC 24 1997

By 18th RS # 21

Public Service Commission
Day MISSOURI

Mileage	Initial 1 Minute (1)		Day Each Additional Minute (1)	
	Minimum	Maximum	Minimum	Maximum
1 - 10	\$.0825	\$.1000	\$.0650	\$.0800
11- 14	.1175	.1200	.0925	.1000
15- 18	.1425	.1500	.1175	.1300
19- 23	.1700	.2000	.1375	.1500
24- 28	.1975	.2400	.1575	.1600
29- 33	.1975	.2700	.1575	.1700
34- 40	.1975	.3000	.1575	.1800
41- 50	.2225	.3400	.1900	.2000
51- 60	.2225	.3700	.1900	.2300
61- 80	.2225	.4000	.1900	.2500
81-100	.2500	.4000	.2225	.2500
101-125	.2500	.4200	.2225	.2700
126-150	.2500	.4200	.2225	.2700
151-190	.2500	.4300	.2225	.3200
191-300	.2500	.4400	.2225	.3200
301-430	.2500	.4600	.2225	.3500

FILED

DEC 7 1996

(1) See Supplemental Schedule for current effective rates.

MO. PUBLIC SERVICE COMM

Issued: **SEP 30 1996**

Effective: ~~SEP 30 1996~~

By KAREN E. JENNINGS, President-Missouri
Southwestern Bell Telephone Company
St. Louis, Missouri **DEC 7 1996**

No supplement to this tariff will be issued except for the purpose of canceling this tariff.

Long Distance Message Telecommunications Service Tariff
16th Revised Sheet 21
Replacing 15th Revised Sheet 21

LONG DISTANCE MESSAGE TELECOMMUNICATIONS SERVICE **RECEIVED**

1.4 TWO-POINT SERVICE--(Continued)

MAY 6 1994

1.4.7 Charges Paid for by Coin Deposits in a Public or Semi-Public Coin Telephone.

MISSOURI
Public Service Commission

The charge for a call paid for by coin deposit in a public or semi-public coin telephone is the sum, rounded to the nearer multiple of \$.05, of the appropriate initial period rate, additional period rates and service charges. In addition, applicable taxes, fees and charges as specified in Paragraph 1.2.14, preceding, will apply.

1.4.8 Rate Table

A. Rates shown in the following table are applicable to intrastate, intra-LATA business between all points within the State of Missouri.

Dial Station-to-Station, Fully-Automated Calling Card
Station-to-Station, Semi-Automated Calling Card Station-to-Station,
Fully-Automated Station-to-Station, Semi-Automated Station-to-Station,
Operator Station-to-Station, Semi-Automated Person-to-Person and
Operator Person-to-Person.

(AT) (AT)	Mileage	Day Initial 1 Minute (1)		Day Each Additional Minute (1)	
		Minimum	Maximum	Minimum	Maximum
	1 - 10	(NR)\$.0825	\$.1000	(NR)\$.0650	\$.0800
	11- 14	.1175	.1200	.0925	.1000
	15- 18	.1425	.1500	.1175	.1300
	19- 23	.1700	.2000	.1375	.1500
	24- 28	.1975	.2400	.1575	.1600
	29- 33	.1975	.2700	.1575	.1700
	34- 40	.1975	.3000	.1575	.1800
	41- 50	.2225	.3400	.1900	.2000
	51- 60	.2225	.3700	.1900	.2300
	61- 80	.2225	.4000	.1900	.2500
	81-100	.2500	.4000	.2225	.2500
	101-125	.2500	.4200	.2225	.2700
	126-150	.2500	.4200	.2225	.2700
	151-190	.2500	.4300	.2225	.2700
	191-300	.2500	.4400	.2225	.3300
	301-430	(NR) .2500	.4600	(NR) .2225	.3500

CANCELLED

DEC 7 1995
BY 17th R.S. # 21
Public Service Commission
MISSOURI

(AT) (1) See Supplemental Schedule for current effective rates.

Issued: **APR 10 1995** Effective: **APR 11 1995** FILED

By HORACE WILKINS, JR., President-Missouri
Southwestern Bell Telephone Company
St. Louis, Missouri

APR 11 1995
94 - 364
MO. PUBLIC SERVICE COMM

No supplement to this tariff will be issued except for the purpose of canceling this tariff.

Long Distance Message Telecommunications Service Tariff
15th Revised Sheet 21
Replacing 14th Revised Sheet 21

LONG DISTANCE MESSAGE TELECOMMUNICATIONS SERVICE

RECEIVED

1.4 TWO-POINT SERVICE--(Continued)

SEP 22 1994

1.4.7 Charges Paid for by Coin Deposits in a Public or Semi-Public Coin Telephone.

MO. PUBLIC SERVICE COMM.

The charge for a call paid for by coin deposit in a public or semi-public coin telephone is the sum, rounded to the nearer multiple of \$.05, of the appropriate initial period rate, additional period rates and service charges. In addition, applicable taxes, fees and charges as specified in Paragraph 1.2.14, preceding, will apply.

1.4.8 Rate Table

A. Rates shown in the following table are applicable to intrastate, intra-LATA business between all points within the State of Missouri.

Dial Station-to-Station, Fully-Automated Calling Card
Station-to-Station, Semi-Automated Calling Card Station-to-Station, Fully-Automated Station-to-Station, Semi-Automated Station-to-Station, Operator Station-to-Station, Semi-Automated Person-to-Person and Operator Person-to-Person.

<u>Mileage</u>	<u>Day Initial 1-Minute</u>	<u>Day Each Additional Minute</u>
1- 10	\$.10	\$.08
11- 14	(CR) .12	(CR) .10
15- 18	.15	.13
19- 23	.20	.15
24- 28	.24	.16
29- 33	.27	.17
34- 40	.30	.18
41- 50	.34	.20
51- 60	.37	.23
61- 80	.40	.25
81-100	.40	.25
101-125	.42	.27
126-150	.42	.27
151-190	.43	.32
191-300	.44	.33
301-430	(CR) .46	(CR) .35

CANCELLED

APR 11 1995
BY 167 P.S.#21
Public Service Commission
MISSOURI

FILED

OCT 1 1994
95 - 85

MISSOURI
Public Service Commission

Issued: SEP 22 1994

Effective: ~~SEP 22 1994~~

By HORACE WILKINS, JR., President-Missouri OCT 01 1994
Southwestern Bell Telephone
St. Louis, Missouri

No supplement to this tariff will be issued except for the purpose of canceling this tariff.

Long Distance Message
Telecommunications Service Tariff
15th Revised Sheet 21
Replacing 14th Revised Sheet 21

LONG DISTANCE MESSAGE TELECOMMUNICATIONS SERVICE

RECEIVED

1.4 TWO-POINT SERVICE-(Continued)

1.4.7 Charges Paid for by Coin Deposits in a Public or Semi-Public Coin Telephone.

DEC 23 1993

MISSOURI
Public Service Commission

The charge for a call paid for by coin deposit in a public or semi-public coin telephone is the sum, rounded to the nearer multiple of \$.05, of the appropriate initial period rate, additional period rates and service charges. In addition, applicable taxes, fees and charges as specified in Paragraph 1.2.14, preceding, will apply.

1.4.8 Rate Table

A. Rates shown in the following table are applicable to intrastate, intra-LATA business between all points within the State of Missouri.

Dial Station-to-Station, Fully-Automated Calling Card
Station-to-Station, Semi-Automated Calling Card Station-to-Station,
Fully-Automated Station-to-Station, Semi-Automated Station-to-Station,
Operator Station-to-Station, Semi-Automated Person-to-Person and
Operator Person-to-Person.

<u>Mileage</u>	<u>Day Initial 1-Minute</u>	<u>Day Each Additional Minute</u>
1- 10	(CR) \$.08	(CR) \$.07
11- 14	.12	.10
15- 18	.15	.13
19- 23	.20	.15
24- 28	.22	.17
29- 33	.27	.18
34- 40	.31	.20
41- 50	.31	.20
51- 60	.34	.21
61- 80	.34	.21
81-100	.34	.21
101-125	.36	.23
126-150	.36	.23
151-190	.38	.25
191-300	.40	.27
301-430	(CR) .40	(CR) .27

CANCELLED

FILED

OCT 1 1994
BY TR-95-ARS
Public Service Commission
MISSOURI

JAN 1 1994
93 - 224
MISSOURI

Issued: **DEC 23 1993**

Effective: **JAN 0 1 1994** Public Service Commission

No supplement to this tariff will be issued except for the purpose of canceling this tariff.

Long Distance Message
Telecommunications Service Tariff
14th Revised Sheet 21
Replacing 13th Revised Sheet 21

RECEIVED

LONG DISTANCE MESSAGE TELECOMMUNICATIONS SERVICE

JAN 22 1991

1.4 TWO-POINT SERVICE-(Continued)

1.4.7 Charges Paid for by Coin Deposits in a Public or Semi-Public Coin Telephone. MO. PUBLIC SERVICE COMM.

The charge for a call paid for by coin deposit in a public or semi-public coin telephone is the sum, rounded to the nearer multiple of \$.05, of the appropriate initial period rate, additional period rates and service charges. In addition, applicable taxes, fees and charges as specified in Paragraph 1.2.14, preceding, will apply.

1.4.8 Rate Table

A. Rates shown in the following table are applicable to intrastate, intra-LATA business between all points within the State of Missouri.

Dial Station-to-Station, Fully-Automated Calling Card
Station-to-Station, Semi-Automated Calling Card Station-to-Station,
Fully-Automated Station-to-Station, Semi-Automated Station-to-Station,
Operator Station-to-Station, Semi-Automated Person-to-Person and
Operator Person-to-Person.

(CT)
(AT)
|
(AT)

<u>Mileage</u>	<u>Day Initial 1-Minute</u>	<u>Day Each Additional Minute</u>
1- 10	\$.10	\$.08
11- 14	.14	.11
15- 18	.17	.14
19- 23	.22	.16
24- 28	.33	.19
29- 33	.36	.20
34- 40	.38	.22
41- 50	.41	.24
51- 60	.43	.25
61- 80	.45	.27
81-100	.46	.29
101-125	.47	.31
126-150	.49	.34
151-190	.51	.36
191-300	.53	.38
301-430	.55	.40

CANCELLED
OCT 01 1994
BY 15TH R.S. # 21
Public Service Commission
MISSOURI

Issued: JAN 22 1991

Effective: JAN 13 1992

FILED

By R. D. BARRON, President-Missouri Division
Southwestern Bell Telephone Company
St. Louis, Missouri

JAN 13 1992
91 - 278
Public Service Commission

No supplement to this tariff will be issued except for the purpose of canceling this tariff.

Long Distance Message
Telecommunications Service Tariff
13th Revised Sheet 21
Replacing 12th Revised Sheet 21

LONG DISTANCE MESSAGE TELECOMMUNICATIONS SERVICE

RECEIVED

1.4 TWO-POINT SERVICE--(Continued)

SEP 5 1990

1.4.7 Charges Paid for by Coin Deposits in a Public or Semi-Public Coin Telephone.

MISSOURI

Public Service Commission

The charge for a call paid for by coin deposit in a public or semi-public coin telephone is the sum, rounded to the nearer multiple of \$.05, of the appropriate initial period rate, additional period rates and service charges. In addition, applicable taxes, fees and charges as specified in Paragraph 1.2.14, preceding, will apply.

1.4.8 Rate Table

A. Rates shown in the following table are applicable to intrastate, intra-LATA business between all points within the State of Missouri. (1)(2)

Dial Station-to-Station, Dial Calling Card Station-to-Station, Operator Station-to-Station and Operator Person-to-Person.

<u>Mileage</u>	<u>Day Initial 1-Minute</u>	<u>Day Each Additional Minute</u>
1- 10	(C) \$.10	\$.08
11- 14	.14	(C) .11
15- 18	.17	.14
19- 23	.22	.16
24- 28	.33	.19
29- 33	.36	.20
34- 40	.38	.22
41- 50	.41	.24
51- 60	.43	.25
61- 80	.45	.27
81-100	.46	.29
101-125	.47	.31
126-150	.49	.34
151-190	.51	.36
191-300	.53	.38
301-430	(C) .55	(C) .40

CANCELLED

FILED

JAN 13 1992

BY 14th R.S. #21

SEP 8 1990

91 - 85

Public Service Commission Public Service Commission
MISSOURI

(1)(2) See Paragraph 1.4.8, B.

Issued: SEP 07 1990

Effective: SEP 8 1990

By R. D. BARRON, President-Missouri Division
Southwestern Bell Telephone Company
St. Louis, Missouri

No supplement to this tariff will be issued except for the purpose of canceling this tariff.

Long Distance Message Telecommunications Service Tariff
12th Revised Sheet 21
Replacing 11th Revised Sheet 21

LONG DISTANCE MESSAGE TELECOMMUNICATIONS SERVICE

RECEIVED

1.4 TWO-POINT SERVICE-(Continued)

JUN 15 1990

1.4.7 Charges Paid for by Coin Deposits in a Public or Semi-Public Coin Telephone. Public Service Commission

The charge for a call paid for by coin deposit in a public or semi-public coin telephone is the sum, rounded to the nearer multiple of \$.05, of the appropriate initial period rate, additional period rates and service charges. In addition, applicable taxes, fees and charges as specified in Paragraph 1.2.14, preceding, will apply.

1.4.8 Rate Table

(CP) A. Rates shown in the following table are applicable to intrastate, intra-LATA business between all points within the State of Missouri. (1)(2)

Dial Station-to-Station, Dial Calling Card Station-to-Station, Operator Station-to-Station and Operator Person-to-Person.

<u>Mileage</u>	<u>Day Initial 1-Minute</u>	<u>Day Each Additional Minute</u>
1- 10	\$.11	\$.08
11- 14	.15	.12
15- 18	.19	.16
19- 23	.24	.18
24- 28	.36	.21
29- 33	.39	.22
34- 40	.42	.24
41- 50	.45	.26
51- 60	.47	.28
61- 80	.49	.30
81-100	.50	.32
101-125	.52	.34
126-150	.54	.37
151-190	.56	.39
191-300	.59	.41
301-430	.61	.43

CANCELLED

SEP 8 1990
BY *[Signature]*
Public Service Commission
MISSOURI

FILED

JUL 15 1990

90-352
Public Service Commission

(AT) (1)(2) See Paragraph 1.4.8, B.

Issued: JUN 15 1990

Effective: JUL 15 1990
~~JUN 15 1990~~

By R. D. BARRON, President-Missouri Division
Southwestern Bell Telephone Company
St. Louis, Missouri

No supplement to this tariff will be issued except for the purpose of canceling this tariff.

Long Distance Message
Telecommunications Service Tariff
11th Revised Sheet 21
Replacing 10th Revised Sheet 21

LONG DISTANCE MESSAGE TELECOMMUNICATIONS SERVICE RECEIVED

1.4 TWO-POINT SERVICE-(Continued)

SEP 25 1989

1.4.7 Charges Paid for by Coin Deposits in a Public or Semi-Public Coin Telephone.

MISSOURI

Public Service Commission

The charge for a call paid for by coin deposit in a public or semi-public coin telephone is the sum, rounded to the nearer multiple of \$.05, of the appropriate initial period rate, additional period rates and service charges. In addition, applicable taxes, fees and charges as specified in Paragraph 1.2.14, preceding, will apply.

1.4.8 Rate Table

A. Rates shown in the following table are applicable to intrastate, intra-LATA business between all points within the State of Missouri.

Dial Station-to-Station, Dial Calling Card Station-to-Station, Operator Station-to-Station and Operator Person-to-Person.

<u>Mileage</u>	<u>Day Initial 1-Minute</u>	<u>Day Each Additional Minute</u>
1- 10	(CR) \$.10	(CR) \$.08
11- 14	.14	.11
15- 18	.17	.14
19- 23	.22	.16
24- 28	.33	.19
29- 33	.36	.20
34- 40	.38	.22
41- 50	.41	.24
51- 60	.43	.25
61- 80	.45	.27
81-100	.46	.29
101-125	.47	.31
126-150	.49	.34
151-190	.51	.36
191-300	.53	.38
301-430	(CR) .55	(CR) .40

CANCELLED
JUL 15 1990
BY *[Signature]* R.S.#21
Public Service Commission
MISSOURI

FILED

OCT 1 1989
89-14
Public Service Commission

Issued: SEP 25 1989

Effective: OCT 01 1989

By R. D. BARRON, President-Missouri Division
Southwestern Bell Telephone Company
St. Louis, Missouri

No supplement to this tariff will be issued except for the purpose of canceling this tariff.

Long Distance Message Telecommunications Service Tariff
10th Revised Sheet 21
Replacing 9th Revised Sheet 21

LONG DISTANCE MESSAGE TELECOMMUNICATIONS SERVICE

RECEIVED

1.4 TWO-POINT SERVICE-(Continued)

MAY 2 1988

1.4.7 Charges Paid for by Coin Deposits in a Public or Semi-Public Coin Telephone.

MISSOURI

The charge for a call paid for by coin deposit in a public or semi-public coin telephone is the sum, rounded to the nearer multiple of \$.05, of the appropriate initial period rate, additional period rates and service charges. In addition, applicable taxes, fees and charges as specified in Paragraph 1.2.14, preceding, will apply.

1.4.8 Rate Table

A. Rates shown in the following table are applicable to intrastate, intra-LATA business between all points within the State of Missouri.

Dial Station-to-Station, Dial Calling Card Station-to-Station, Operator Station-to-Station and Operator Person-to-Person.

Mileage	Day Initial 1-Minute	Day Each Additional Minute
1- 10	\$.12	(CR) \$.09
11- 14	.16	.13
15- 18	(CR) .20	.17
19- 23	.26	.19
24- 28	.39	.22
29- 33	.43	.24
34- 40	.45	.26
41- 50	.48	.27
51- 60	.51	.30
61- 80	.53	.33
81-100	.54	.34
101-125	.56	.37
126-150	.57	.40
151-190	.60	.42
191-300	.63	.44
301-430	(CR) .64	(CR) .46

(RT)

CANCELLED

OCT 1 1989

BY H & R S. #21

Public Service Commission

MISSOURI

Issued: MAY 2 1988

Effective: JUL 1 1988

FILED

By R. D. BARRON, President-Missouri Division
Southwestern Bell Telephone Company
St. Louis, Missouri

JUL 1 1988
84-222 et al.

Public Service Commission

No supplement to this tariff will be issued except for the purpose of canceling this tariff.

Long Distance Message Telecommunications Service Tariff
9th Revised Sheet 21
Replacing 8th Revised Sheet 21

LONG DISTANCE MESSAGE TELECOMMUNICATIONS SERVICE

RECEIVED

1.4 TWO-POINT SERVICE-(Continued)

DEC 29 1983

1.4.7 Charges Paid for by Coin Deposits in a Public or Semi-Public Coin Telephone

MISSOURI
Public Service Commission

The charge for a call paid for by coin deposit in a public or semi-public coin telephone is the sum, rounded to the nearer multiple of \$.05, of the appropriate initial period rate, additional period rates and service charges. In addition, applicable taxes, fees and charges as specified in Paragraph 1.2.14, preceding, will apply.

1.4.8 Rate Table

(CP) A. Rates shown in the following table are applicable to intrastate, intra-LATA business between all points within the State of Missouri.

(CT) Dial Station-to-Station, Dial Calling Card Station-to-Station, Operator Station-to-Station and Operator Person-to-Person.

<u>Mileage</u>	<u>Day Initial 1-Minute</u>	<u>Day Each Additional Minute</u>
1- 10	(CR) \$.12	(CR) \$.10
11- 14	.16	.14
15- 18	.21	.18
19- 23	.27	.20
24- 28	.42	.23
29- 33	.46	.25
34- 40	.48	.27
41- 50	.50	.29
51- 60	.54	.32
61- 80	.56	.35
81-100	.57	.36
101-125	.58	.39
126-150	.61	.42
151-190	.64	.44
191-300	.67	.47
301-430	.68	.49
Over 430	(CR) .70	(CR) .51

CANCELLED
JUL 1 1988
BY LOTH B.S.F.
Public Service Commission
MISSOURI

Issued: DEC 29 1983

Effective: JAN 01 1984

By R. D. BARRON, Vice President-Missouri
Southwestern Bell Telephone Company
St. Louis, Missouri

FILED
JAN - 1 1984
83 - 253
Public Service Commission

No supplement to this tariff will be issued except for the purpose of canceling this tariff.

Long Distance Message
Telecommunications Service Tariff
8th Revised Sheet 21
Replacing 7th Revised Sheet 21

RECEIVED

LONG DISTANCE MESSAGE TELECOMMUNICATIONS SERVICE

JAN 12 1983

1.4 TWO-POINT SERVICE--(Continued)

1.4.7 Charges paid for by Coin Deposits in a Public or Semi-Public Coin Telephone

MISSOURI
Public Service Commission

The charge for a call paid for by coin deposit in a public or semi-public coin telephone is the sum, rounded to the nearer multiple of \$.05, of the appropriate initial period rate, additional period rates and service charges.

1.4.8 Rate Table

Rates shown in the following table are applicable to intrastate business between all points within the State of Missouri.

Dial Station-to-Station, Dial Credit Card Station-to-Station, Operator Station-to-Station and Operator Person-to-Person.

<u>Mileage</u>	<u>Day Initial 1-Minute</u>	<u>Day Each Additional Minute</u>
1- 10	(CR) .11	(CR) .09
11- 14	.15	.13
15- 18	.20	.17
19- 23	.26	.19
24- 28	.41	.22
29- 33	.43	.24
34- 40	.45	.26
41- 50	.47	.28
51- 60	.50	.31
61- 80	.52	.33
81-100	.54	.35
101-125	.56	.37
126-150	.59	.40
151-190	.61	.42
191-300	.63	.44
301-430	.65	.46
Over 430	(CR) .68	(CR) .48

CANCELLED

JAN - 1 1984
BY *[Signature]*
PUBLIC SERVICE COMMISSION
OF MISSOURI

FILED

Issued: JAN 12 1983

Effective: JAN 14 1983

By R. D. BARRON, Vice President-Missouri
Southwestern Bell Telephone Company
St. Louis, Missouri

JAN 14 1983
82-199
Public Service Commission

No supplement to this tariff will be issued except for the purpose of canceling this tariff.

Long Distance Message
Telecommunications Service Tariff
7th Revised Sheet 21
Replacing 6th Revised Sheet 21

LONG DISTANCE MESSAGE TELECOMMUNICATIONS SERVICE

1.4 TWO-POINT SERVICE-(Continued)

OCT - 7 1982

1.4.7 Charges Paid for by Coin Deposits in a Public or Semi-Public Coin Telephone.

The charge for a call paid for by coin deposit in a public or semi-public coin telephone is the sum, rounded to the nearer multiple of \$.05, of the appropriate initial period rate, additional period rates and service charges.

1.4.8 Rate Table

Rates shown in the following table are applicable to intrastate business between all points within the State of Missouri.

Dial Station-to-Station, Dial Credit Card Station-to-Station, Operator Station-to-Station and Operator Person-to-Person.

<u>Mileage</u>	<u>Day Initial 1-Minute</u>	<u>Day Each Additional Minute</u>
1- 10	.10	(CR) .08
11- 14	.13	.11
15- 18	.18	.15
19- 23	.23	.17
24- 28	.36	.19
29- 33	.38	.21
34- 40	.40	.23
41- 50	.42	.25
51- 60	.44	.27
61- 80	.46	.29
81-100	.48	.31
101-125	.50	.33
126-150	.52	.35
151-190	.54	.37
191-300	.56	.39
301-430	.58	.41
Over 430	.60	(CR) .43

CANCELLED
BY *JH RS 21*
JAN 14 1983
PUBLIC SERVICE COMMISSION
OF MISSOURI

Issued: October 4, 1982

Effective: October 7, 1982

BY R. D. BARRON, Vice President-Missouri
Southwestern Bell Telephone Company
St. Louis, Missouri

OCT - 7 1982
82-3

No supplement to this tariff will be issued except for the purpose of canceling this tariff.

Long Distance Message
Telecommunications Service Tariff
6th Revised Sheet 21
Replacing 5th Revised Sheet 21

LONG DISTANCE MESSAGE TELECOMMUNICATIONS SERVICE

RECEIVED

1.4 TWO-POINT SERVICE-(Continued)

1.4.7 Charges Paid for by Coin Deposits in a Public or Semi-Public Coin Telephone

DEC 7 1981

The charge for a call paid for by coin deposit in a public or semi-public coin telephone is the sum, rounded to the nearer multiple of \$.05, of (AT) the appropriate initial period rate, additional period rates and service charges.

1.4.8 Rate Table

Rates shown in the following table are applicable to intrastate business between all points within the State of Missouri.

(CR) Dial Station-to-Station, Dial Credit Card Station-to-Station, Operator Station-to-Station and Operator Person-to-Person.

<u>Mileage</u>	<u>Day Initial 1-Minute</u>	<u>Day Each Additional Minute</u>
1- 10	(CR) .10	(CR) .07
11- 14	.13	.10
15- 18	.18	.14
19- 23	.23	.16
24- 28	.36	.18
29- 33	.38	.20
34- 40	.40	.22
41- 50	.42	.24
51- 60	.44	.26
61- 80	.46	(CR) .28
81-100	.48	.30
101-125	.50	.32
126-150	.52	.34
151-190	.54	.36
191-300	.56	.38
301-430	.58	.40
Over 430	(CR) .60	.42

CANCELLED
OCT - 7 1982
BY RS 21
PUBLIC SERVICE COMMISSION
OF MISSOURI

(RT)

Issued:

DEC 07 1981

Effective:

BY R. R. SHOCKLEY, Vice President-Missouri
Southwestern Bell Telephone Company
St. Louis, Missouri

DEC 09 1981
DEC - 9 1981
Public Service Commission

No supplement to this tariff will be issued except for the purpose of canceling this tariff.

Long Distance Message
Telecommunications Service Tariff
5th Revised Sheet 21
Replacing 4th Revised Sheet 21

LONG DISTANCE MESSAGE TELECOMMUNICATIONS SERVICE

1.4 TWO-POINT SERVICE-(Continued)

DEC - 4 1980

1.4.7 Charges Paid for by Coin Deposits in a Public or Semi-Public Coin Telephone

(C) The charge for a call paid for by coin deposit in a public or semi-public coin telephone is the sum, rounded to the nearer multiple of \$.05, of the appropriate initial period rate and additional period charges.

1.4.8 Rate Tables

Rates shown in the following table are applicable to intrastate business between all points within the State of Missouri.

Dial Station-to-Station, Operator Station-to-Station, and Operator Person-to-Person.

Rate Mileage	Initial Period			Additional Minutes
	Day	All Days-All Hours		Day*
	Dial S-S	Operator S-S	Operator P-P	All Classes of Service
	Initial 1-Minute	Initial 3-Minutes	Initial 3-Minutes	Each Additional Minute
1- 10	.08	(CR) .50	(CR) 1.50	(CR) .05
11- 14	.10	.60	1.60	.07
15- 18	.13	.70	1.70	.10
19- 23	.15	.85	1.85	.12
24- 28	(CR) .21	.95	1.95	.15
29- 33	.26	1.05	2.05	.18
34- 40	.30	1.15	2.15	.21
41- 50	.32	1.25	2.25	.23
51- 60	(CR) .34	1.35	2.35	.25
61- 80	.36	1.45	2.45	.30
81-100	.39	1.55	2.55	.32
101-125	(CR) .42	1.65	2.65	.34
126-150	.44	1.75	2.75	.36
151-190	.46	1.85	2.85	.38
191-300	.48	1.95	2.95	.40
301-430	.50	2.05	3.05	.42
Over 430	.52	(CR) 2.15	(CR) 3.15	

CANCELLED
DEC - 9 1981
6 RS 2/25
PUBLIC SERVICE COMMISSION
OF MISSOURI

F I L E S

* Day Additional Minute charges apply to Operator Station-To-Station and Operator Person-To-Person messages All Days, All Hours.

DEC 10 1980

80-256

Issued: December 1, 1980

Effective:

December 15, 1980

BY R. R. SHOCKLEY, Vice President-Missouri
Southwestern Bell Telephone Company
St. Louis, Missouri

No supplement to this tariff will be issued except for the purpose of canceling this tariff.

Long Distance Message Telecommunications Service Tariff
 14th Revised Sheet 21
 Replacing 3rd Revised Sheet 21

LONG DISTANCE MESSAGE TELECOMMUNICATIONS SERVICE **MAR 10 1980**

1.4 TWO-POINT SERVICE-(Continued)

1.4.7 Charges Paid for by Coin Deposits in a Public or Semi-Public Coin Telephone

The charge for call paid for by coin deposit in a public or semi-public coin telephone is the sum, rounded to the nearer multiple of \$.05, of the appropriate initial period rate and additional period charges.

1.4.8 Rate Tables

Rates shown in the following table are applicable to intrastate business between all points within the State of Missouri.

CANCELLED
 DEC 15 1980
 BY *508 PS21*
 PUBLIC SERVICE COMMISSION OF MISSOURI

Dial Station-to-Station, Operator Station-to-Station, and Operator Person-to-Person.

Rate Mileage	Initial Period			Additional Minutes Day* All Classes of Service Each Additional Minute
	Day	All Days-All Hours		
	Dial S-S	Operator S-S	Operator P-P	
	Initial 1-Minute	Initial 3-Minutes	Initial 3-Minutes	
1- 10	.08	.35	(CR) 1.40	.04
11- 14	.10	.45	1.50	.06
15- 18	.13	.55	1.60	.09
19- 23	.15	.70	1.70	.10
24- 28	.20	.80	1.80	.14
29- 33	.25	.90	1.90	.17
34- 40	.28	1.00	2.00	.20
41- 50	.30	1.10	2.10	.22
51- 60	.32	1.20	2.20	.24
61- 80	.36	1.30	2.30	.26
81-100	.39	1.40	2.40	.29
101-125	.41	1.50	2.50	.32
126-150	.44	1.60	2.60	.34
151-190	.46	1.70	2.70	.36
191-300	.48	1.80	2.80	.38
301-430	.50	1.90	2.90	.40
Over 430	.52	2.00	(CR) 3.00	.42

* Day Additional Minute charges apply to Operator Station-To-Station and Operator Person-To-Person messages All Days, All Hours.

FILED
MAR 13 1980
 79-213

Issued: March 10, 1980

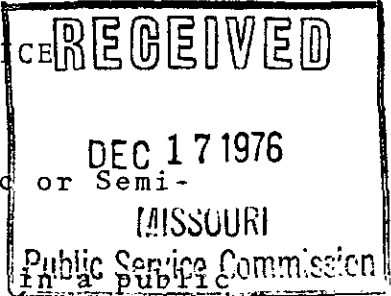
Effective: March 13, 1980

BY R. R. SHOCKLEY, Vice President-Missouri
 Southwestern Bell Telephone Company
 St. Louis, Missouri

No supplement to this tariff will be issued except for the purpose of canceling this tariff.

Long Distance Message Telecommunications Service Tariff
3rd Revised Sheet 21
Replacing 2nd Revised Sheet 21

LONG DISTANCE MESSAGE TELECOMMUNICATIONS SERVICE



1.4 TWO-POINT SERVICE-(Continued)

1.4.7 Charges Paid for by Coin Deposits in a Public or Semi-Public Coin Telephone

The charge for call paid for by coin deposit in a public or semi-public coin telephone is the sum, rounded to the nearer multiple of \$.05, of the appropriate initial period rate and additional period charges.

1.4.8 Rate Tables

Rates shown in the following table are applicable to intrastate business between all points within the State of Missouri.

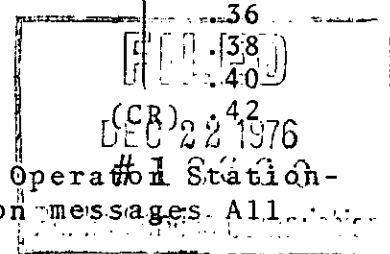
Dial Station-to-Station, Operator Station-to-Station, and Operator Person-to-Person.

Rate Mileage	Initial Period			Additional Minutes
	Day	All Days-All Hours		Day*
	Dial S-S	Operator S-S	Operator P-P	All Classes of Service
	Initial 1 Minute	Initial 3 Minutes	Initial 3 Minutes	Each Additional Minute
1- 10	.08	(CR) .35	(CR) 1.00	.04
11- 14	.10	.45	1.10	.06
15- 18	.13	.55	1.20	.09
19- 23	.15	.70	1.35	.10
24- 28	.20	.80	1.45	.14
29- 33	.25	.90	1.55	.17
34- 40	.28	1.00	1.65	.20
41- 50	.30	1.10	1.80	.22
51- 60	.32	1.20	1.90	.24
61- 80	(CR) .36	1.30	2.00	.26
81-100	.39	1.40	2.10	.29
101-125	.41	1.50	2.20	.32
126-150	.44	1.60	2.30	.34
151-190	.46	1.70	2.40	.36
191-300	.48	1.80	2.50	.38
301-430	.50	1.90	2.60	.40
Over 430	(CR) .52	(CR) 2.00	(CR) 2.70	(CR) .42

CANCELLED

MAR 13 1980

BY 4th R.S. # 21
PUBLIC SERVICE COMMISSION OF MISSOURI



* Day Additional Minute charges apply to Operator Station-To-Station and Operator Person-To-Person messages. All Days, All Hours.

Issued: December 17, 1976 Effective: December 22, 1976

BY R.R. SHOCKLEY, Vice President-Missouri
Southwestern Bell Telephone Company
St. Louis, Missouri

No supplement to this tariff will be issued except for the purpose of canceling this tariff.

Long Distance Message Telecommunications Service Tariff
2nd Revised Sheet 21
Replacing 1st Revised Sheet 21

LONG DISTANCE MESSAGE TELECOMMUNICATIONS SERVICE

RECEIVED

1.4 TWO-POINT SERVICE-(Continued)

1.4.7 Charges Paid for by Coin Deposits in a Public or Semi-Public Coin Telephone

The charge for call paid for by coin deposit in a public or semi-public coin telephone is the sum, rounded to the nearer multiple of \$.05, of the appropriate initial period rate and additional period charges.

1.4.8 Rate Tables

Rates shown in the following table are applicable to intrastate business between all points within the State of Missouri.

Dial Station-to-Station, Operator Station-to-Station, and Operator Person-to-Person.

Rate Mileage	Initial Period			Additional Minutes
	Day	All Days-All Hours		Day*
	Dial S-S	Operator S-S	Operator P-P	All Classes of Service
	Initial 1 Minute	Initial 3 Minutes	Initial 3 Minutes	Each Additional Minute
1- 10	.08	.25	.90	.04
11- 14	.10	.35	1.00	.06
15- 18	.13	.50	1.10	.09
19- 23	.15	.60	1.20	.10
24- 28	.20	.70	1.30	.14
29- 33	.25	.80	1.40	.17
34- 40	.28	.90	1.50	.20
41- 50	.30	1.00	1.60	.22
51- 60	.32	1.10	1.75	.24
61- 80	.35	1.20	1.85	.26
81-100	.38	1.30	2.00	.29
101-125	.40		2.10	.31
126-150	.43		2.20	.33
151-190	.45	1.60	2.35	.35
191-300	.47	1.70	2.45	.37
301-430	.49	1.80	2.55	.39
(CR) Over 430	.51	1.90	2.65	.41

CANCELLED

DEC 22 1976

By 3rd RS 21

FILED

JUNE 1976

Case # 17898

* Day Additional Minutes apply to Operator Station-To-Station and Operator Person-To-Person messages All Days, All Hours.

Issued: May 30, 1975

Effective: June 4, 1975

BY R. R. SHOCKLEY, Vice President-Missouri
Southwestern Bell Telephone Company
St. Louis, Missouri

No supplement to this tariff will be issued except for the purpose of canceling this tariff.

Long Distance Message
Telecommunications Service Tariff
1st Revised Sheet 21
Replacing Original Sheet 21

LONG DISTANCE MESSAGE TELECOMMUNICATIONS SERVICE

FEB 28 1975

1.4 TWO-POINT SERVICE-(Continued)

1.4.7 Charges Paid for by Coin Deposits in a Public or Semi-Public Coin Telephone

The charge for call paid for by coin deposit in a public or semi-public coin telephone is the amount rounded to the nearer multiple of \$.05, of the applicable intrastate period rate and additional period charges.

CANCELLED

1.4.8 Rate Tables

JUN 4 1975

2nd R.S. 21

Rates shown in the following tables are applicable to intrastate business between all points within the State of Missouri.

PUBLIC SERVICE COMMISSION
OF MISSOURI

A. Dial Station-to-Station

Rate Area Mileage	DAY		EVENING		NIGHT		WEEKEND	
	Initial Period 3 Minutes Paid	Each Addi- tional Min.	Initial Period 3 Minutes Paid	Each Addi- tional Min.	Initial Period 1 Minute Paid	Each Addi- tional Min.	Initial Period 3 Minutes Paid	Each Addi- tional Min.
1- 10	\$.15	\$.05	\$.13	\$.04	\$.11*	\$.03	\$.11	\$.03
11- 14	.20	.07	.18	.07	.15*	.05	.15	.05
15- 18	.30	.10	.27	.09	.24*	.08	.24	.08
19- 23	.35	.11	.30	.10	.11	.09	.27	.09
24- 28	.40	.13	.34	.11	.12	(CR).09	.30	.10
29- 33	(CR).46	.15	.39	.13	(CR).13	.11	(CR).35	.11
34- 40	.52	(CR).17	.43	.14	(CR).13	.13	.39	.13
41- 50	.57	.19	.48	.16	.16	.14	(CR).44	.14
51- 60	.63	.21	(CR).52	.17	.17	.15	.47	.15
61- 80	.69	.23	.57	(CR).19	.18	.16	.50	.16
81-100	.75	.25	.62	.20	(CR).19	(CR).18	.55	(CR).18
101-125	.80	.26	.66	(CR).22	.21	.19	.59	.19
126-150	.85	.28	.71	.23	.23	.22	.62	.20
151-190	.90	.30	.75	(CR).25	.23	(CR).22	.67	(CR).22
191-300	.95	.31	.80	.26	(CR).23	.23	.71	.23
301-430	1.00	.33	.83	.27	.25	.25	.75	.25
Over-430	(CR)1.05	(CR).35	(CR).87	(CR).29	(CR).26	(CR).26	(CR).78	(CR).26

FILED
MAR 4 1975
181328
Public Service Commission

* 3 Minutes

Issued: February 28, 1975

Effective: March 4, 1975

BY R. R. SHOCKLEY, Vice President - Missouri
Southwestern Bell Telephone Company
St. Louis, Missouri

No supplement to this tariff will be issued except for the purpose of canceling this tariff.

LONG DISTANCE MESSAGE TELECOMMUNICATIONS SERVICE

RECEIVED
APR 26 1973
MISSOURI
Public Service Commission

1.4 TWO-POINT SERVICE-(Continued)

1.4.7 Charges Paid for by Coin Deposits in a Public Coin Telephone

The charge for call paid for by coin deposit in a public or semi-public coin telephone is the sum, rounded to the nearer multiple of \$.05, of the appropriate initial period rate and additional period charges.

CANCELLED

1.4.8 Rate Tables

Rates shown in the following table are applicable to intrastate business between all points within the State of Missouri.

MAR 4 1975
1st R.S. 21
MISSOURI
PUBLIC SERVICE COMMISSION

A. Dial Station-to-Station

Rate	DAY		EVENING		NIGHT		WEEKEND	
	Initial Period 3 Minutes Paid	Each Addi- tional Min.	Initial Period 3 Minutes Paid	Each Addi- tional Min.	Initial Period 1 Minute Paid	Each Addi- tional Min.	Initial Period 3 Minutes Paid	Each Addi- tional Min.
Airline Mileage								
1- 10	\$.15	\$.05	\$.13	\$.04	\$.11*	\$.03	\$.11.	\$.03
11- 14	.20	.07	.18	.07	.15*	.05	.15	.05
15- 18	.30	.10	.27	.09	.24*	.08	.24	.08
19- 23	.35	.11	.30	.10	.11	.09	.27	.09
24- 28	.40	.13	.34	.11	.12	.10	.30	.10
29- 33	.45	.15	.39	.13	.14	.11	.34	.11
34- 40	.50	.16	.43	.14	.15	.13	.39	.13
41- 50	.55	.18	.48	.16	.16	.14	.42	.14
51- 60	.60	.20	.51	.17	.17	.15	.45	.15
61- 80	.65	.21	.55	.18	.18	.16	.49	.16
81-100	.70	.23	.60	.20	.20	.17	.53	.17
101-125	.75	.25	.64	.21	.21	.19	.57	.19
126-150	.80	.26	.69	.22	.22	.20	.60	.20
151-190	.85	.28	.72	.23	.23	.21	.63	.21
191-300	.90	.30	.78	.24	.24	.22	.67	.22
301-430	.95	.31	.81	.25	.25	.24	.72	.24
Over-430	1.00	.33	.85	.26	.26	.24	.75	.25

FILED
JUN 1 1973
Public Service Commission

* 3 Minutes

Issued: MAY 1 1973.

Effective: JUN 1 1973

BY R. R. SHOCKLEY, Vice President, Missouri-Illinois
Southwestern Bell Telephone Company
St. Louis, Missouri

No Supplement to this tariff will be issued except for the purpose of canceling this tariff.

Long Distance Message
Telecommunications Service Tariff
4th Revised Sheet 21.01
Replacing 3rd Revised Sheet 21.01

Missouri Public

LONG DISTANCE MESSAGE TELECOMMUNICATIONS SERVICE

REC'D APR 02 2002

Service Commission

(RT)

(RT)

Missouri Public

FILED MAY 02 2002
02 -10 57
Service Commission

Issued: April 2, 2002

Effective: May 2, 2002

By JAN NEWTON, President-Missouri
Southwestern Bell Telephone, L.P., d/b/a Southwestern Bell Telephone Company
St. Louis, Missouri

No Supplement to this tariff will be issued except for the purpose of canceling this tariff.

Long Distance Message Telecommunications Service Tariff
3rd Revised Sheet 21.01
Replacing 2nd Revised Sheet 21.01

Missouri Public

LONG DISTANCE MESSAGE TELECOMMUNICATIONS SERVICE

REC'D MAR 26 2002

(CT)

Long Distance Day Rates

(CT)

(CT)

Mileage	Business		Residence	
	Initial 1-Minute	Residence Initial 1-Minute	Each Additional 1-Minute	Each Additional 1-Minute
1 - 10	\$.1166	\$.1166	\$.0928	\$.0928
11 - 14	.1393	.1393	.1166	.1166
15 - 18	.1749	.1749	.1512	.1512
19 - 23	.2332	.2332	.1749	.1749
24 - 28	.2797	.2797	.1857	.1857
29 - 33	.2900	.3100(CR)	.1976	.1976
34 - 40	.2900	.3100	.2095	.2095
41 - 50	.2900	.3100	.2332	.2332
51 - 60	.2900	.3100	.2678	.2678
61 - 80	.2900	.3100	.2900	.2916
81 - 100	.2900	.3100	.2900	.2916
101 - 125	.2900	.3100	.2900	.3100(CR)
126 - 150	.2900	.3100	.2900	.3100
151 - 190	.2900	.3100	.2900	.3100
191 - 300	.2900	.3100	.2900	.3100
301 - 430	.2900	.3100(CR)	.2900	.3100(CR)

CANCELLED

MAY 02 2002
By *LHR* 21.01
Public Service Commission
MISSOURI

CANCELLED

MAY 02 2002
By *NS*
Public Service Commission
MISSOURI

Missouri Public

FILED APR 02 2002

Service Commission

Pursuant to Section 392.510.3, R.S.Mo. 1994

Issued: March 26, 2002

Effective: April 2, 2002

By JAN NEWTON, President-Missouri
Southwestern Bell Telephone, L.P., d/b/a Southwestern Bell Telephone Company
St. Louis, Missouri

P.S.C. Mo.- No. 26
Missouri Public

No Supplement to this
tariff will be issued
except for the purpose
of canceling this tariff.

REC'D MAR 30 2001

Long Distance Message
Telecommunications Service Tariff
2nd Revised Sheet 21.01
Replacing 1st Revised Sheet 21.01

Service Commission
LONG DISTANCE MESSAGE TELECOMMUNICATIONS SERVICE

Long Distance Rates

<u>Mileage</u>	<u>Day Initial 1-Minute</u>	<u>Day Each Additional Minute</u>
1 - 10	\$.1166 (CR)	\$.0928 (CR)
11 - 14	.1393	.1166
15 - 18	.1749	.1512
19 - 23	.2332	.1749
24 - 28	.2797	.1857
29 - 33	.3142	.1976
34 - 40	.3499	.2095
41 - 50	.3963	.2332
51 - 60	.4309	.2678
61 - 80	.4665	.2916
81 - 100	.4665	.2916
101 - 125	.4892	.3142
126 - 150	.4892	.3142
151 - 190	.5011	.3726
191 - 300	.5130	.3840
301 - 430	.5356 (CR)	.4082 (CR)

CANCELLED

APR 02 2002
3rd RS 21.01
Public Service Commission
MISSOURI

Missouri Public

FILED MAY 01 2001

Pursuant to Section 392.510.3, R.S.Mo. 1994

Service Commission

Issued: March 30, 2001

Effective: May 1, 2001

By JAN NEWTON, President-Missouri
Southwestern Bell Telephone Company
St. Louis, Missouri

No supplement to this tariff will be issued except for the purpose of canceling this tariff.

Long Distance Message Telecommunications Service Tariff Supplemental Schedule 1st Revised Sheet 21.01 Replacing Original Sheet 21.01

RECEIVED

LONG DISTANCE MESSAGE TELECOMMUNICATIONS SERVICE

MAR 30 2000

Long Distance Rates

MISSOURI Public Service Commission
Each Additional Minute

<u>Mileage</u>	<u>Day Initial 1-Minute</u>	<u>Each Additional Minute</u>
1 - 10	\$.1080 (CR)	\$.0860 (CR)
11 - 14	.1290	.1080
15 - 18	.1620	.1400
19 - 23	.2160	.1620
24 - 28	.2590	.1720
29 - 33	.2910	.1830
34 - 40	.3240	.1940
41 - 50	.3670	.2160
51 - 60	.3990	.2480
61 - 80	.4320	.2700
81 - 100	.4320	.2700
101 - 125	.4530	.2910
126 - 150	.4530	.2910
151 - 190	.4640	.3450
191 - 300	.4750	.3560
301 - 430	.4960 (CR)	.3780 (CR)

CANCELLED

MAY 01 2001

By *2nd RS 21.01*
Public Service Commission
MISSOURI

FILED

MAY 01 2000

MISSOURI Public Service Commission

Pursuant to Section 392.510.3, R.S.Mo. 1994

Issued: MARCH 30, 2000

Effective: MAY 1, 2000

By JAN NEWTON, President-Missouri
Southwestern Bell Telephone
St. Louis, Missouri

No supplement to this tariff will be issued except for the purpose of canceling this tariff.

Long Distance Message Telecommunications Service Tariff Supplemental Schedule Original Sheet 21.01

LONG DISTANCE MESSAGE TELECOMMUNICATIONS SERVICE

Long Distance Rates

<u>Mileage</u>	<u>Day Initial 1-Minute</u>	<u>Day Each Additional Minute</u>
1- 10	\$.10	\$.08
11- 14	.12	.10
15- 18	.15	.13
19- 23	.20	.15
24- 28	.24	.16
29- 33	.27	.17
34- 40	.30	.18
41- 50	.34	.20
51- 60	.37	.23
61- 80	.40	.25
81-100	.40	.25
101-125	.42	.27
126-150	.42	.27
151-190	.43	.32
191-300	.44	.33
301-430	.46	.35

RECEIVED
MAY 6 1994
MISSOURI
Public Service Commission

CANCELLED

MAY 01 2000
By *JS RS 21.01*
Public Service Commission
MISSOURI

Pursuant to Section 392.510.3, R.S.Mo. 1994

Issued: APR 10 1995

Effective: APR 11 1995

By HORACE WILKINS, JR., President-Missouri
Southwestern Bell Telephone
St. Louis, Missouri

FILED
APR 11 1995
94-364
MO. PUBLIC SERVICE COMM