

LADUE

see

St. Louis District Exchange Rates

under

"St. Louis"

June 1, 1937

SBC PSC MO #17
Lake Ozark-Osage Beach, Missouri
Osage Beach Base Rate Area
Original Sheet 2-A
Replacing 2nd Revised Sheet 2
Of the Ozark Central Telephone Company
P.S.C. Mo. No. 1

Non-Scannable
Map

(Is viewable in the Data Center
200 Madison Street, 1st Floor
Jefferson City MO)

SBC PSC MO #17
Lake Ozark-Osage Beach, Missouri
Lake Ozark- Base Rate Area
Original Sheet 2
Replacing Original Sheet 3
Of the Ozark Central Telephone Company
P.S.C. Mo. No. 1

Non-Scannable
Map

(Is viewable in the Data Center
200 Madison Street, 1st Floor
Jefferson City MO)

SBC PSC MO #17
Lake Ozark-Osage Beach, Missouri
7th Revised Sheet 3
Replacing 6th Revised Sheet 3

Non-Scannable Map

(Is viewable in the Data Center
200 Madison Street, 1st Floor
Jefferson City MO)

SBC PSC MO #17
Lamar, Missouri
2nd Revised Sheet 2
Replacing 1st Revised Sheet 2

Non-Scannable Map

(Is viewable in the Data Center
200 Madison Street, 1st Floor
Jefferson City MO)

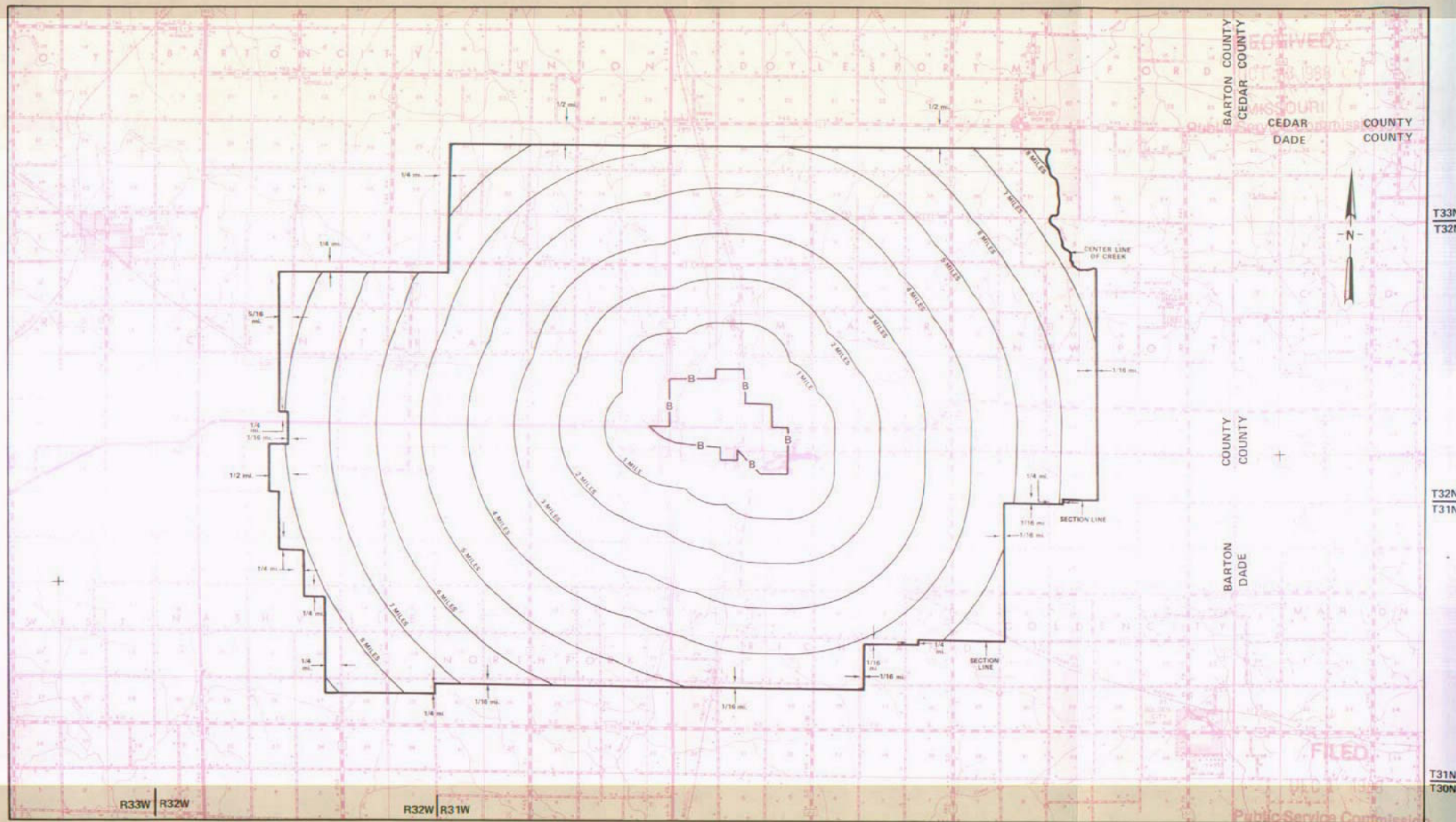
CANCELLED
June 29, 2007
TO-2002-185
Missouri Public
Service Commission

NO SUPPLEMENT TO THIS TARIFF WILL
BE ISSUED EXCEPT FOR THE PURPOSE OF
CANCELING THIS TARIFF.

Lamar, Missouri

P. S. C. Mo. No. 17
EXCHANGE AREA MAP

10th REVISED SHEET 3
REPLACING 9th REVISED SHEET 3



Issued: November 1, 1988

By R. D. BARRON, President, Missouri Division
Southwestern Bell Telephone Company
St. Louis, Missouri

R31W | R30W

R30W | R29W

R29W | R28W

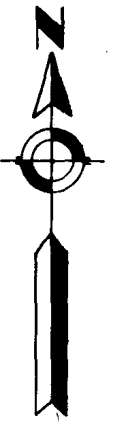
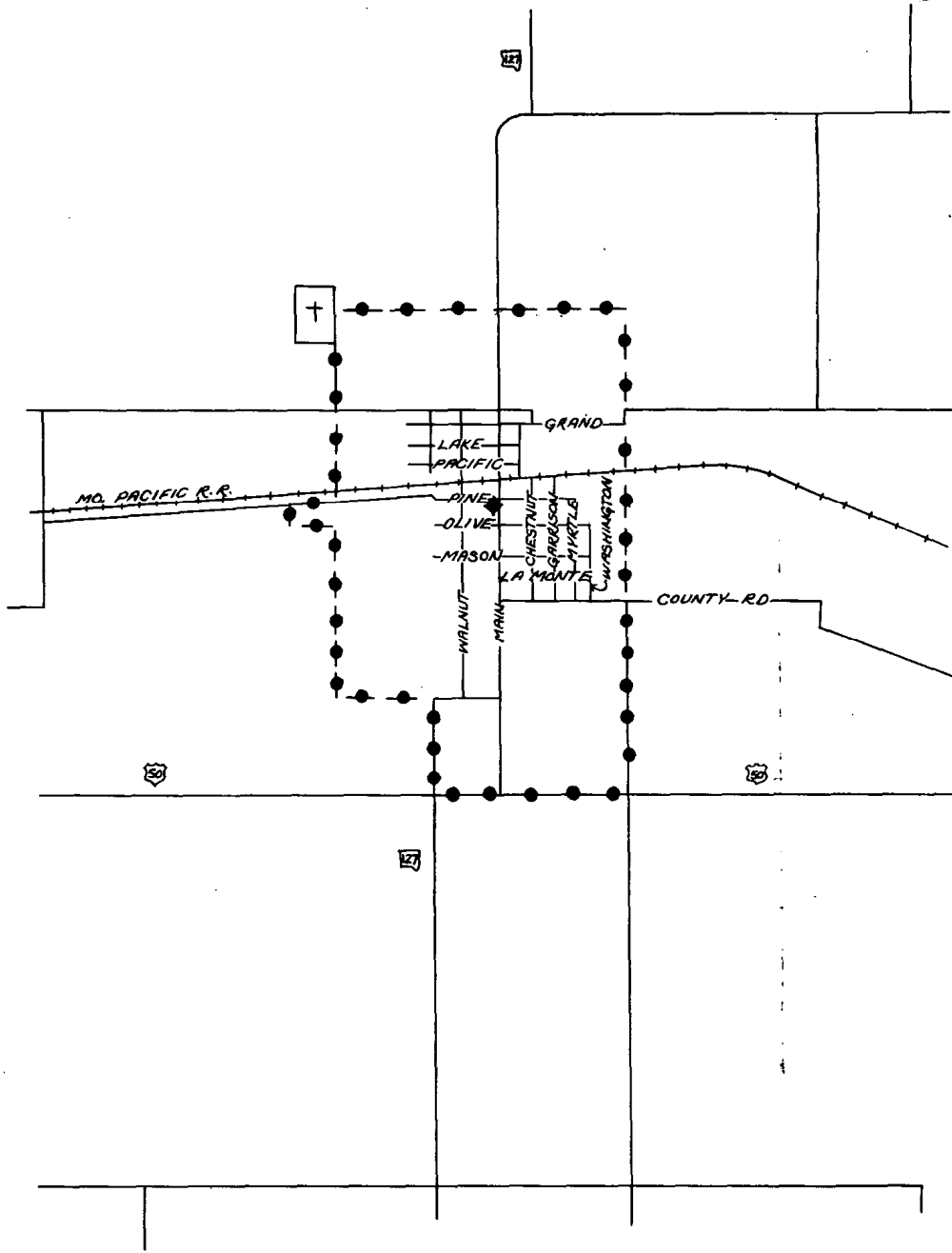
Effective: December 1, 1988

NO SUPPLEMENT TO THIS TARIFF WILL BE ISSUED EXCEPT FOR THE PURPOSE OF CANCELING THIS TARIFF.

P. S. C. Mo. No. 17
BASE RATE AREA MAP

La Monte, Missouri
ORIGINAL SHEET 2

LA MONTE, MO.



CODE
 BELL CENTRAL OFFICE: 
 BASE RATE AREA LIMITS: 

Issued: March 19, 1952

Effective: April 18, 1952

By H. R. TOWLES, General Manager
Southwestern Bell Telephone Company
St. Louis, Missouri

CANCELLED
June 29, 2007
TO-2002-185
Missouri Public
Service Commission

NO SUPPLEMENT TO THIS TARIFF WILL BE ISSUED EXCEPT FOR THE PURPOSE OF CANCELING THIS TARIFF.

P. S. C. Mo. No. 17 EXCHANGE AREA MAP

La Monte, Missouri

5 4th REVISED SHEET 3
REPLACING 3rd REVISED SHEET 3

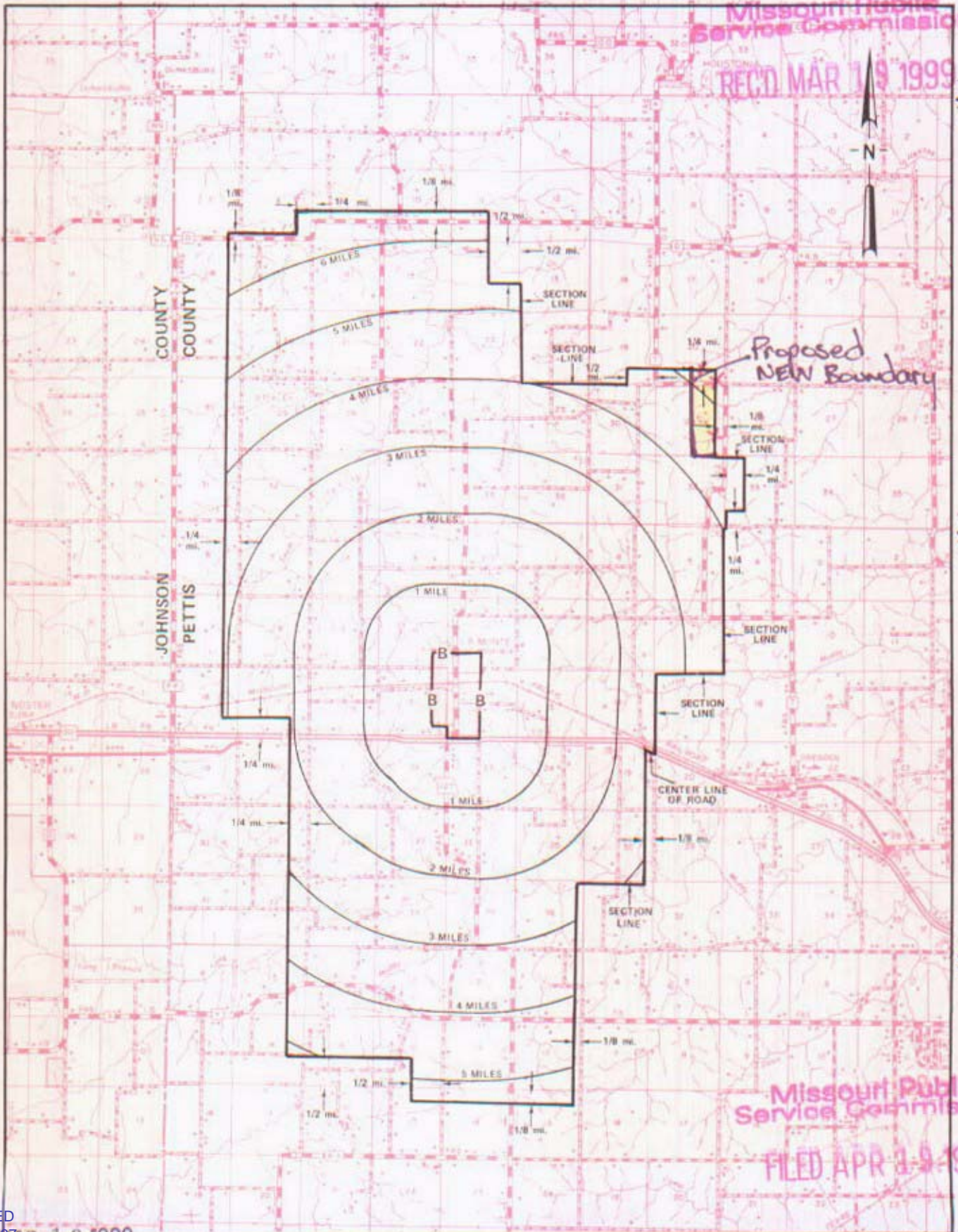
Missouri Public Service Commission
REC'D MAR 19 1999

T48N
T47N

T47N
T46N

T46N
T45N

Missouri Public Service Commission
FILED APR 19 1999



CANCELLED
June 29, 2007
TO-2002-185
Missouri Public Service Commission

MAR 19 1999

By Priscilla Hill-Ardoin

R23W | R22W

By R. R. SHOCKLEY, Vice President, Missouri
Southwestern Bell Telephone Company

APR 19 1999

JUL 10 1978

May 10 1977

Effective:

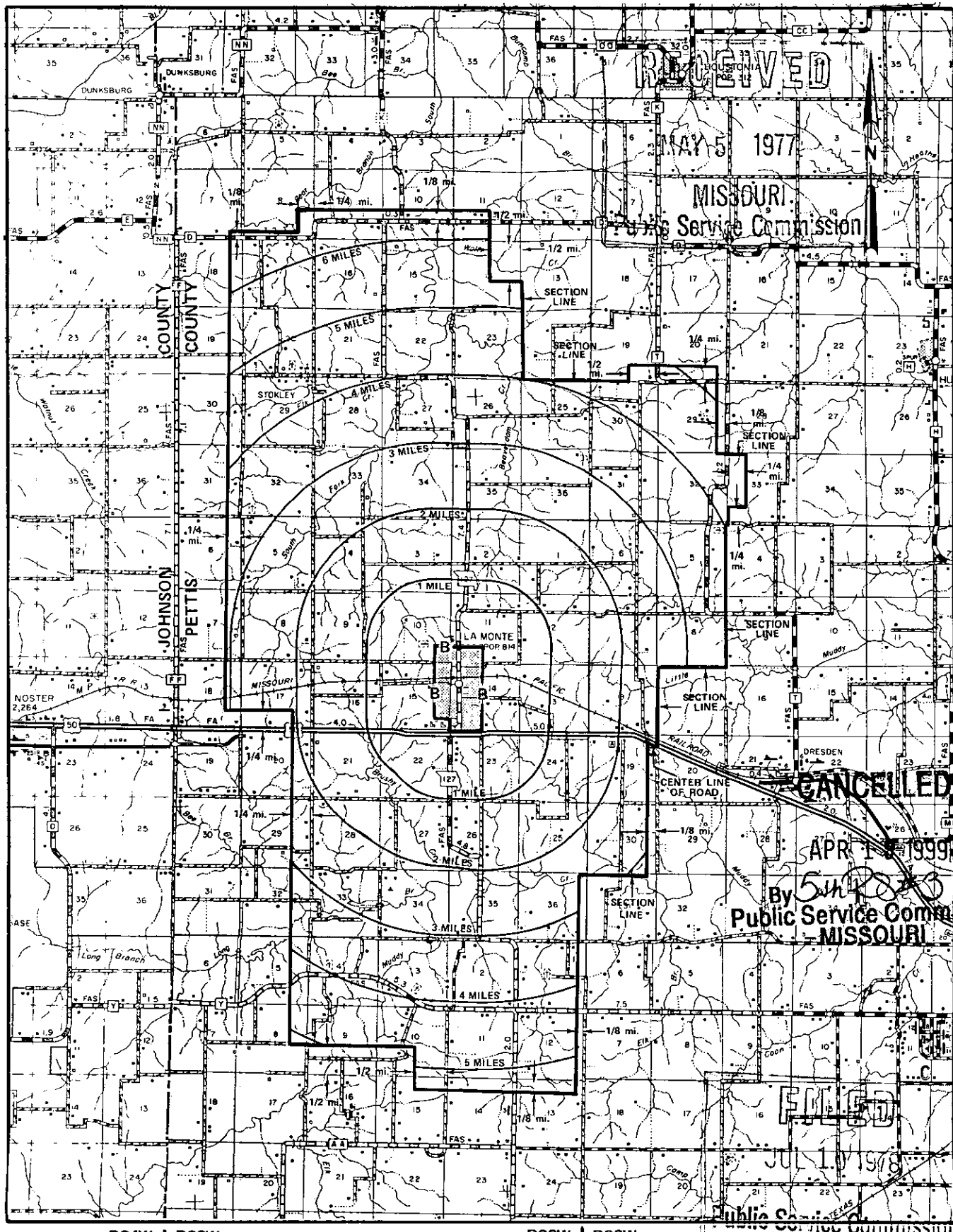
NO SUPPLEMENT TO THIS TARIFF WILL BE ISSUED EXCEPT FOR THE PURPOSE OF CANCELING THIS TARIFF.

P. S. C. Mo. No. 17

La Monte, Missouri

4th REVISED SHEET 3
REPLACING 3rd REVISED SHEET 3

EXCHANGE AREA MAP



R24W | R23W

R23W | R22W

By R. R. SHOCKLEY, Vice President, Missouri
Southwestern Bell Telephone Company
St. Louis, Missouri

Issued: May 10, 1977

Effective: JUL 10 1978

SBC PSC MO #17
Lancaster, Missouri
1st Revised Sheet 2
Replacing Original Sheet 2

Non-Scannable Map

(Is viewable in the Data Center
200 Madison Street, 1st Floor
Jefferson City MO)

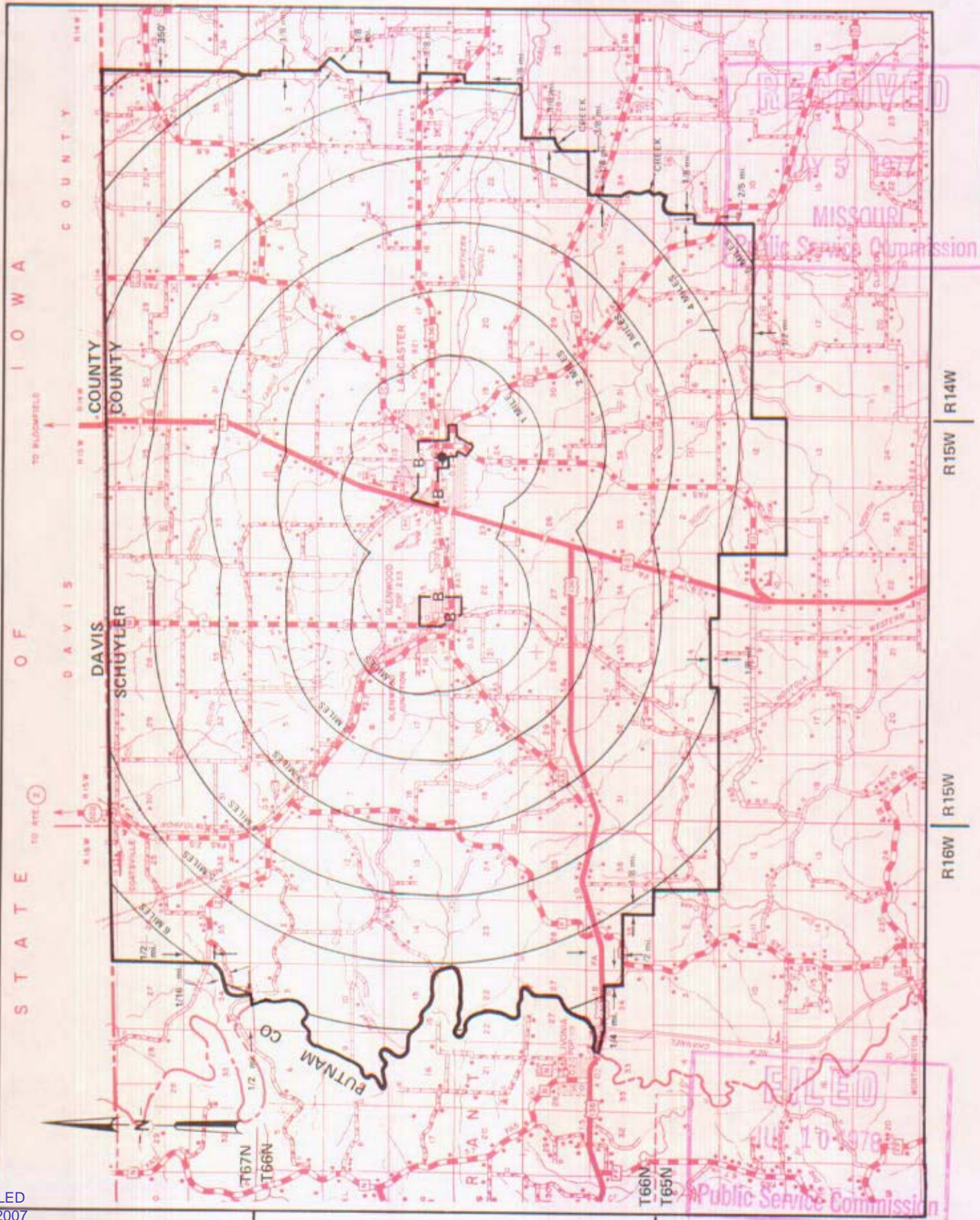
NO SUPPLEMENT TO THIS TARIFF WILL BE ISSUED EXCEPT FOR THE PURPOSE OF CANCELING THIS TARIFF.

P. S. C. Mo. No. 17

Lancaster, Missouri

EXCHANGE AREA MAP

6th REVISED SHEET 3
REPLACING 5th REVISED SHEET 3



CANCELLED
June 29, 2007
TO-2002-185
Missouri Public
Service Commission

By R. R. SHOCKLEY, Vice President, Missouri
Southwestern Bell Telephone Company
St. Louis, Missouri

Issued: May 10, 1977

JUL 10 1978

SBC PSC MO #17
Leadwood, Missouri
2nd Revised Sheet 2
Replacing 1st Revised Sheet 2

Non-Scannable Map

(Is viewable in the Data Center
200 Madison Street, 1st Floor
Jefferson City MO)

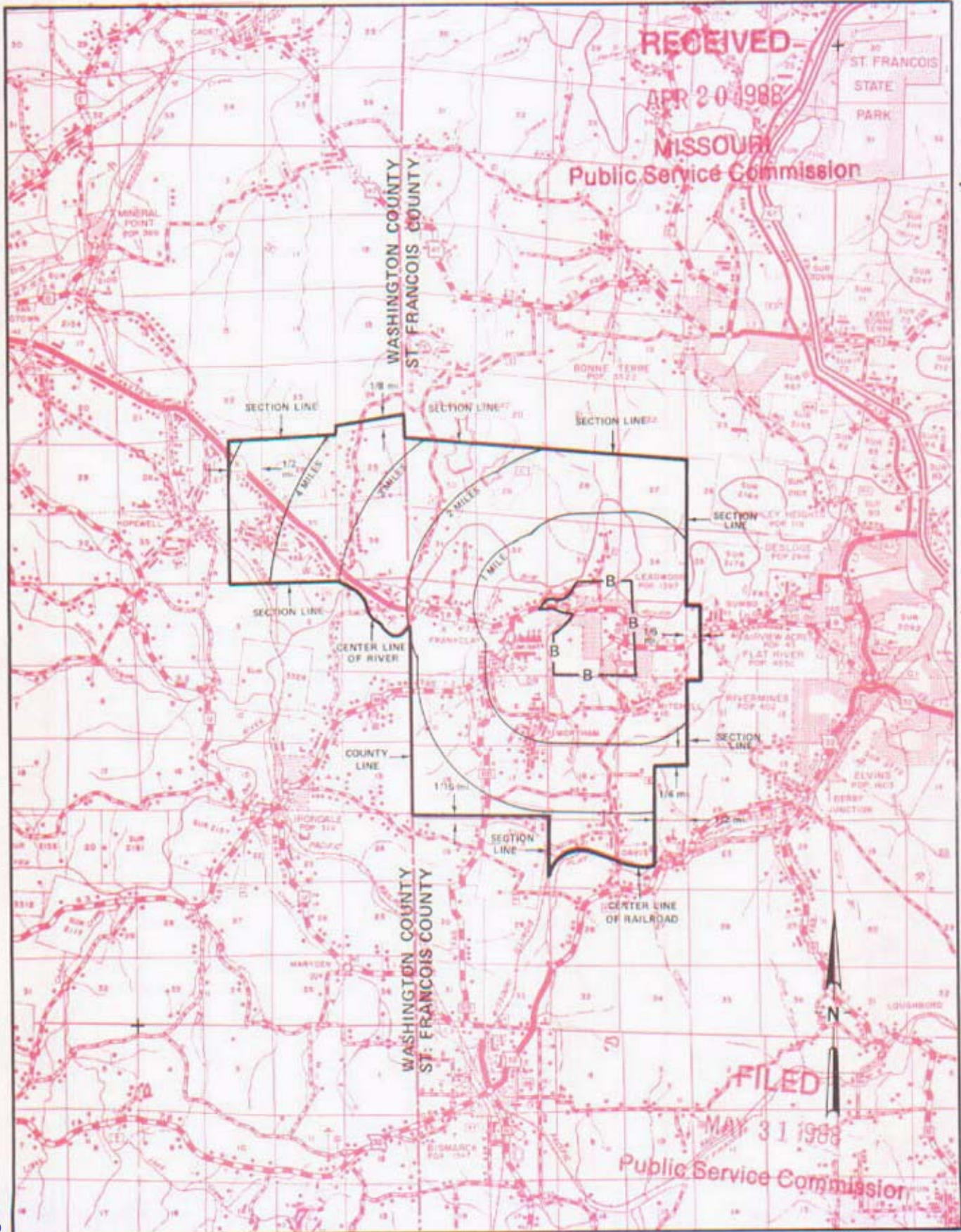
NO SUPPLEMENT TO THIS TARIFF WILL BE ISSUED EXCEPT FOR THE PURPOSE OF CANCELING THIS TARIFF.

Leadwood, Missouri

P. S. C. Mo. No. 17

7th REVISED SHEET 3
REPLACING 6th REVISED SHEET 3

EXCHANGE AREA MAP



CANCELLED
June 29, 2007
TO-2002-185
Missouri Public
Service Commission

Issued: APRIL 29, 1988

By R. D. BARRON, President, Missouri Division
Southwestern Bell Telephone Company
St. Louis, Missouri

Effective: MAY 31, 1988

No Supplement to this tariff will be issued except for the purpose of canceling this tariff.

Missouri Portion-
Leavenworth-Lansing, Kansas Exchange
34th Revised Sheet 1
Replacing 33rd Revised Sheet 1

LOCAL EXCHANGE TARIFF

I. GENERAL

This Tariff is governed, except as otherwise specified herein, by all other Tariffs of the Southwestern Bell Telephone Company on file in the State of Missouri, which are hereby made a part of this Tariff. Unless otherwise specified, the charges quoted in this Tariff or in any other Missouri Tariff are for periods of one month, are payable monthly in advance and entitle the customer to exchange telephone service within the Leavenworth-Lansing, Exchange Area.

II. RATES

- A. The rates for main service do not include a Telephone Company-provided instrument, except for Semi-Public Service, which includes one station equipped with a coin-collecting device.
- B. Within the Missouri portion of the Exchange Area:

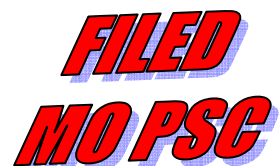
1. Flat Rate Service	Current Rates(1)	
	<u>Business</u>	<u>Residence</u>
One-Party	\$19.88(CR)	\$10.12(CR)
Two-Party	N/A	7.00(CR)
Lifeline	N/A	(2)
One-Party Multiline	23.40	N/A
PBX Trunk	33.45	15.85

- (1) See Sheet 2 for maximum allowable rates.
- (2) A customer eligible under established criteria can receive a discount from his or her bill for residential essential local telecommunications services, in accordance with P.S.C. Mo. – No. 24, Local Exchange Tariff, Section 1.2.2.E, regarding Lifeline Service.

Issued: October 17, 2005

Effective: December 1, 2005

By CINDY BRINKLEY, President-SBC Missouri
Southwestern Bell Telephone, L.P., d/b/a SBC Missouri
St. Louis, Missouri



No. Supplement to this tariff will be issued except for the purpose of canceling this tariff.

Missouri Portion-
Leavenworth-Lansing, Kansas Exchange
33rd Revised Sheet 1
Replacing 32nd Revised Sheet 1

(RT)

LOCAL EXCHANGE TARIFF

I. GENERAL

This Tariff is governed, except as otherwise specified herein, by all other Tariffs of the Southwestern Bell Telephone Company on file in the State of Missouri, which are hereby made a part of this Tariff. Unless otherwise specified, the charges quoted in this Tariff or in any other Missouri Tariff are for periods of one month, are payable monthly in advance and entitle the customer to exchange telephone service within the Leavenworth-Lansing, Exchange Area.

II. RATES

- A. The rates for main service do not include a Telephone Company-provided instrument, except for Semi-Public Service, which includes one station equipped with a coin-collecting device.
- B. Within the Missouri portion of the Exchange Area:

1. Flat Rate Service	Current Rates(1)	
	Business	Residence
One-Party	\$20.27	\$10.33
Two-Party	N/A	7.14
Lifeline	N/A	(2)
One-Party Multiline	23.40	N/A
PBX Trunk	33.45	15.85

(CT)(CR)

CANCELLED

DEC 01 2005

By *34th RS 1*
Public Service Commission
MISSOURI

- (1) See Sheet 2 for maximum allowable rates.
- (2) A customer eligible under established criteria can receive a discount from his or her bill for residential essential local telecommunications services, in accordance with P.S.C. Mo. – No. 24, Local Exchange Tariff, Section 1.2.2.E, regarding Lifeline Service.

(CT)
|
(CT)

Issued: April 1, 2005

Effective: May 1, 2005

By CINDY BRINKLEY, President-SBC Missouri
Southwestern Bell Telephone, L.P., d/b/a SBC Missouri
St. Louis, Missouri

TO-1998-0329

**FILED
MO PSC**

No Supplement to this tariff will be issued except for the purpose of canceling this tariff.

Missouri Portion-
Leavenworth-Lansing, Kansas, Exchange
32nd Revised Sheet 1
Replacing 31st Revised Sheet 1

SOUTHWESTERN BELL TELEPHONE COMPANY
LOCAL EXCHANGE TARIFF

I. GENERAL

This Tariff is governed, except as otherwise specified herein, by all other Tariffs of the Southwestern Bell Telephone Company on file in the State of Missouri, which are hereby made a part of this Tariff. Unless otherwise specified, the charges quoted in this Tariff or in any other Missouri Tariff are for periods of one month, are payable monthly in advance and entitle the customer to exchange telephone service within the Leavenworth-Lansing, Exchange Area.

II. RATES

- A. The rates for main service do not include a Telephone Company-provided instrument, except for Semi-Public Service, which includes one station equipped with a coin-collecting device.
- B. Within the Missouri portion of the Exchange Area:

1. Flat Rate Service	Current Rates(1)	
	Business	Residence
One-Party	\$20.27(CR)	\$10.33(CR)
Two-Party	N/A	7.14
Lifeline(2)	N/A	6.83(CR)
One-Party Multiline	23.40	N/A
PBX Trunk	33.45	15.85

CANCELLED

MAY 01 2005
BY 33rd RS 1
Public Service Commission
MISSOURI

- (1) See Sheet 2 for maximum allowable rates.
- (2) See P.S.C. Mo. – No. 24, Local Exchange Tariff, Section 1.2.2.E, for description, terms and conditions related to Lifeline Service.

Issued: October 15, 2004

Effective: December 1, 2004

By CINDY BRINKLEY, President-SBC Missouri
Southwestern Bell Telephone, L.P., d/b/a SBC Missouri
St. Louis, Missouri

**FILED
MO PSC**

No Supplement to this tariff will be issued except for the purpose of canceling this tariff.

Missouri Portion-
Leavenworth-Lansing, Kansas, Exchange
31st Revised Sheet 1
Replacing 30th Revised Sheet 1
Missouri Public

SOUTHWESTERN BELL TELEPHONE COMPANY Service Commission
LOCAL EXCHANGE TARIFF

REC'D MAY 10 2004

I. GENERAL

This Tariff is governed, except as otherwise specified herein, by all other Tariffs of the Southwestern Bell Telephone Company on file in the State of Missouri, which are hereby made a part of this Tariff. Unless otherwise specified, the charges quoted in this Tariff or in any other Missouri Tariff are for periods of one month, are payable monthly in advance and entitle the customer to exchange telephone service within the Leavenworth-Lansing, Exchange Area.

II. RATES

- A. The rates for main service do not include a Telephone Company-provided instrument, except for Semi-Public Service, which includes one station equipped with a coin-collecting device.
- B. Within the Missouri portion of the Exchange Area:

		Current Rates(1)	
		Business	Residence
1.	Flat Rate Service		
	One-Party	\$20.83	\$10.61
	Two-Party	N/A	7.34
(AT)	Lifeline(2)	N/A	7.11(NR)
	One-Party Multiline	23.40	N/A
	PBX Trunk	33.45	15.85

CANCELLED

DEC 01 2004
By 32ndRS 1
Public Service Commission
MISSOURI

- (RT)
- (FC) (1) See Sheet 2 for maximum allowable rates.
- (FC)(AT) (2) See P.S.C. Mo. - No. 24, Local Exchange Tariff, Section 1.2.2.E, for description, terms and conditions related to Lifeline Service.

Issued: May 10, 2004

Effective: June 9, 2004

By CINDY BRINKLEY, President-SBC Missouri
Southwestern Bell Telephone, L.P., d/b/a SBC Missouri
St. Louis, Missouri

Missouri Public
Service Commission

FILED JUN 09 2004

No Supplement to this tariff will be issued except for the purpose of canceling this tariff.

Missouri Portion-
Leavenworth-Lansing, Kansas, Exchange
30th Revised Sheet 1
Replacing 29th Revised Sheet 1
Missouri Public

SOUTHWESTERN BELL TELEPHONE COMPANY
LOCAL EXCHANGE TARIFF

REC'D OCT 15 2003

I. GENERAL

This Tariff is governed, except as otherwise specified herein, by all other Tariffs of the Missouri Service Commission Southwestern Bell Telephone Company on file in the State of Missouri, which are hereby made a part of this Tariff. Unless otherwise specified, the charges quoted in this Tariff or in any other Missouri Tariff are for periods of one month, are payable monthly in advance and entitle the customer to exchange telephone service within the Leavenworth-Lansing, Exchange Area.

II. RATES

- A. The rates for main service do not include a Telephone Company-provided instrument, except for Semi-Public Service, which includes one station equipped with a coin-collecting device.
- B. Within the Missouri portion of the Exchange Area:

1. Flat Rate Service	Current Rates(1)	
	Business	Residence
One-Party	\$20.83(CR)	\$10.61(CR)
Two-Party	NA	7.34
One-Party Multiline	23.40	NA
PBX Trunk	33.45	15.85

CANCELLED

JUN 09 2004

By 3/56 RS/
Public Service Commission
MISSOURI

- (1) See Sheet 1.01 for Footnotes.
- (2) See Sheet 2 for maximum allowable rates.

Issued: October 15, 2003

Effective: December 1, 2003

By CINDY BRINKLEY, President-SBC Missouri
Southwestern Bell Telephone, L.P., d/b/a SBC Missouri
St. Louis, Missouri

Missouri Public
Service Commission

FILED DEC 01 2003

No Supplement to this tariff will be issued except for the purpose of canceling this tariff.

Missouri Portion-
Leavenworth-Lansing, Kansas, Exchange
29th Revised Sheet 1
Replacing 28th Revised Sheet 1

SOUTHWESTERN BELL TELEPHONE COMPANY
LOCAL EXCHANGE TARIFF

Missouri Public
Service Commission

I. GENERAL

REC'D OCT 15 2002

This Tariff is governed, except as otherwise specified herein, by all other Tariffs of the Southwestern Bell Telephone Company on file in the State of Missouri, which are hereby made a part of this Tariff. Unless otherwise specified, the charges quoted in this Tariff or in any other Missouri Tariff are for periods of one month, are payable monthly in advance and entitle the customer to exchange telephone service within the Leavenworth-Lansing, Exchange Area.

II. RATES

- A. The rates for main service do not include a Telephone Company-provided instrument, except for Semi-Public Service, which includes one station equipped with a coin-collecting device.
- B. Within the Missouri portion of the Exchange Area:

1. Flat Rate Service	Current Rates(1)	
	Business	Residence
One-Party	\$20.84(CR)	\$10.62(CR)
Two-Party	NA	7.34(CR)
One-Party Multiline	23.40	NA
PBX Trunk	33.45	15.85

CANCELLED

DEC 01 2003

30th RS
Public Service Commission
MISSOURI

Missouri Public
Service Commission

- (1) See Sheet 1.01 for Footnotes.
- (2) See Sheet 2 for maximum allowable rates.

FILED DEC 01 2002

Issued: October 15, 2002

Effective: December 1, 2002

By CINDY BRINKLEY, President-Missouri
Southwestern Bell Telephone, L.P., d/b/a Southwestern Bell Telephone Company
St. Louis, Missouri

No supplement to this tariff will be issued except for the purpose of canceling this tariff.

MISSOURI PORTION-
LEAVENWORTH-LANSING, KANSAS, EXCHANGE
28th Revised Sheet 1
Replacing 27th Revised Sheet 1

SOUTHWESTERN BELL TELEPHONE COMPANY
LOCAL EXCHANGE TARIFF

Missouri Public

REC'D OCT 01 2001

I. GENERAL

Service Commission

This Tariff is governed, except as otherwise specified herein, by all other Tariffs of the Southwestern Bell Telephone Company on file in the State of Missouri, which are hereby made a part of this Tariff. Unless otherwise specified, the charges quoted in this Tariff or in any other Missouri Tariff are for periods of one month, are payable monthly in advance and entitle the customer to exchange telephone service within the Leavenworth-Lansing, Exchange Area.

II. RATES

A. The rates for main service do not include a Telephone Company-provided instrument, except for Semi-Public Service, which includes one station equipped with a coin-collecting device.

B. Within the Missouri portion of the Exchange Area:

1. Flat Rate Service	CURRENT RATES (1)	
	Business	Residence
One-Party	\$20.65 (CR)	\$10.52 (CR)
Two-Party	N/A	7.28 (CR)
One-Party Multiline	23.40	N/A
PBX Trunk	33.45	15.85

CANCELLED

DEC 01 2002

JANRSI
Missouri Service Commission
2002

(1) See Sheet 1.01 for Footnotes.
(2) See Sheet 2 for maximum allowable rates.

Issued: October 1, 2001

Effective: December 1, 2001

By JAN NEWTON, President-Missouri
Southwestern Bell Telephone Company
St. Louis, Missouri

Missouri Public

FILED DEC 01 2001

Service Commission

No supplement to this tariff will be issued except for the purpose of canceling this tariff.

MISSOURI PORTION-
LEAVENWORTH-LANSING, KANSAS, EXCHANGE

27th Revised Sheet 1

Replacing 26th Revised Sheet 1

Missouri Public
Service Commission

SOUTHWESTERN BELL TELEPHONE COMPANY
LOCAL EXCHANGE TARIFF

REC'D OCT 02 2000

I. GENERAL

This Tariff is governed, except as otherwise specified herein, by all other Tariffs of the Southwestern Bell Telephone Company on file in the State of Missouri, which are hereby made a part of this Tariff. Unless otherwise specified, the charges quoted in this Tariff or in any other Missouri Tariff are for periods of one month, are payable monthly in advance and entitle the customer to exchange telephone service within the Leavenworth-Lansing, Exchange Area.

II. RATES

A. The rates for main service do not include a Telephone Company-provided instrument, except for Semi-Public Service, which includes one station equipped with a coin-collecting device.

B. Within the Missouri portion of the Exchange Area:

(AT)

1. Flat Rate Service

CURRENT RATES (1)

Business Residence

One-Party

\$20.81(CR)

\$10.60(CR)

Two-Party

N/A

7.33(CR)

(RT)

One-Party Multiline

23.40

N/A

PBX Trunk

33.45

15.85

CANCELLED

DEC 01 2000
JRS #1
Public Service Commission
MISSOURI

Missouri Public
Service Commission

FILED DEC 01 2000

(1) See Sheet 1.01 for Footnotes.

(AT) (2) See Sheet 2 for maximum allowable rates.

Issued: October 2, 2000

Effective: December 1, 2000

By JAN NEWTON, President-Missouri
Southwestern Bell Telephone Company
St. Louis, Missouri

RECEIVED

No supplement to this tariff will be issued except for the purpose of canceling this tariff.

MISSOURI PORTION-LEAVENWORTH-LANSING, KANSAS, EXCHANGE
26th Revised Sheet 1
Replacing 25th Revised Sheet 1

MISSOURI
Public Service Commission

SOUTHWESTERN BELL TELEPHONE COMPANY
LOCAL EXCHANGE TARIFF

I. GENERAL

This Tariff is governed, except as otherwise specified herein, by all other Tariffs of the Southwestern Bell Telephone Company on file in the State of Missouri, which are hereby made a part of this Tariff. Unless otherwise specified, the charges quoted in this Tariff or in any other Missouri Tariff are for periods of one month, are payable monthly in advance and entitle the customer to exchange telephone service within the Leavenworth-Lansing Exchange Area.

II. RATES

- A. The rates for main service do not include a Telephone Company-provided instrument, except for Semi-Public Service, which includes one station equipped with a coin-collecting device.
- B. Within the Missouri Portion of the Exchange Area:

1. Flat Rate Service	<u>Business</u>	<u>Residence</u>
One-Party	\$21.00(1)	\$10.70(1) (DR)
Semi-Public	9.68	N/A
One-Party Multiline	23.40	N/A
PBX Trunk	33.45	15.85

(RT)

CANCELLED

DEC 01 2000
By 27hrs 1
Public Service Commission
MISSOURI

See Sheet 1.01 for Footnotes.

FILED

Issued: FEB 07 1997

Effective: ~~MAR 10 1997~~ MAR 17 1997

By KAREN JENNINGS, President-Missouri
Southwestern Bell Telephone Company
St. Louis, Missouri

MO. PUBLIC SERVICE COMM

No supplement to this tariff will be issued except for the purpose of canceling this tariff.

MISSOURI PORTION-
LEAVENWORTH-LANSING, KANSAS, EXCHANGE
25th Revised Sheet 1
Replacing 24th Revised Sheet 1

RECEIVED

MAR 20 1989

SOUTHWESTERN BELL TELEPHONE COMPANY
LOCAL EXCHANGE TARIFF

I. GENERAL

MISSOURI

This Tariff is governed, except as otherwise specified herein, by the Missouri Tariffs of the Southwestern Bell Telephone Company on file in the State of Missouri, which are hereby made a part of this Tariff. Unless otherwise specified, the charges quoted in this Tariff or in any other Missouri Tariff are for periods of one month, are payable monthly in advance and entitle the customer to exchange telephone service within the Leavenworth-Lansing Exchange Area.

Public Service Commission

II. RATES

A. The rates for main service do not include a Telephone Company-provided instrument, except for Semi-Public Service, which includes one station equipped with a coin-collecting device.

B. Within the Missouri Portion of the Exchange Area:

1. Flat Rate Service

	<u>Business</u>	<u>Residence</u>
One-Party	(RT) \$21.00(1)	(RT) \$10.70(1)
Two-Party	N/A	(RT) 7.40(1)
Semi-Public	(RT) 9.68	N/A
One-Party Multiline	23.40	N/A
PBX Trunk	(RT) 33.45	(RT) 15.85

CANCELLED

MAR 17 1989
BY *26* *th* *R.S.* #
Public Service Commission
MISSOURI

FILED

MAY 27 1989

See Sheet 1.01 for Footnotes.

Public Service Commission

Issued: ~~MAR 27 1989~~

Effective: **MAY 27 1989**

By R. D. BARRON, President-Missouri Division
Southwestern Bell Telephone Company
St. Louis, Missouri

No Supplement to this
tariff will be issued
except for the purpose
of canceling this tariff.

(RT)

LOCAL EXCHANGE TARIFF

II. RATES (cont'd)

Footnotes:

Urban service applicable within the Base Rate Area; where urban service is furnished outside, urban mileage charges are applicable as set forth below:

	<u>Current Rates(1)</u>
(C) One-party line stations and Private Branch Exchange Trunks	\$1.09(CR)
Party line Stations, each	.80(CR)

Urban mileage charges, as shown above, apply to customers having urban service who are located within the suburban service area. In those cases where the Base Rate Area boundary follows the center line of a street or highway, all dwellings or structures facing or adjoining this street or highway and within 150 feet of the center line of the street or highway shall be considered within the Base Rate Area and shall be given urban service without the application of urban mileage.

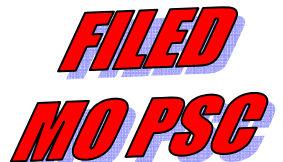
Area between the Base Rate Area boundary and suburban service area boundary.

(1) See Sheet 2 for maximum allowable rates.

Issued: October 17, 2005

Effective: December 1, 2005

By CINDY BRINKLEY, President-SBC Missouri
Southwestern Bell Telephone, L.P., d/b/a SBC Missouri
St. Louis, Missouri



No Supplement to this tariff will be issued except for the purpose of canceling this tariff.

Missouri Portion-
Leavenworth-Lansing, Kansas, Exchange
6th Revised Sheet 1.01
Replacing 5th Revised Sheet 1.01

SOUTHWESTERN BELL TELEPHONE COMPANY
LOCAL EXCHANGE TARIFF

II. RATES (cont'd)

Footnotes:

Urban service applicable within the Base Rate Area; where urban service is furnished outside, urban mileage charges are applicable as set forth below:

	<u>Current Rates(1)</u>
One-party line stations & Private Branch Exchange Trunks	\$1.11(CR)
Party line Stations, each	.82(CR)

Urban mileage charges, as shown above, apply to customers having urban service who are located within the suburban service area. In those cases where the Base Rate Area boundary follows the center line of a street or highway, all dwellings or structures facing or adjoining this street or highway and within 150 feet of the center line of the street or highway shall be considered within the Base Rate Area and shall be given urban service without the application of urban mileage.

Area between the Base Rate Area boundary and suburban service area boundary.

CANCELLED

DEC 01 2005

By *7th RS 1.01*
Public Service Commission
MISSOURI

(1) See Sheet 2 for maximum allowable rates.

Issued: October 15, 2004

Effective: December 1, 2004

By CINDY BRINKLEY, President-Missouri
Southwestern Bell Telephone, L.P., d/b/a Southwestern Bell Telephone Company
St. Louis, Missouri

FILED
MO PSC

No Supplement to this tariff will be issued except for the purpose of canceling this tariff.

Missouri Portion-
Leavenworth-Lansing, Kansas, Exchange
5th Revised Sheet 1.01
Replacing 4th Revised Sheet 1.01

SOUTHWESTERN BELL TELEPHONE COMPANY
LOCAL EXCHANGE TARIFF

Missouri Public
Service Commission

II. RATES (cont'd)

REC'D OCT 15 2002

Footnotes:

Urban service applicable within the Base Rate Area; where urban service is furnished outside, urban mileage charges are applicable as set forth below:

	Current Rates(1)
One-party line stations & Private Branch Exchange Trunks	\$1.14(CR)
Party line Stations, each	.84(CR)

Urban mileage charges, as shown above, apply to customers having urban service who are located within the suburban service area. In those cases where the Base Rate Area boundary follows the center line of a street or highway, all dwellings or structures facing or adjoining this street or highway and within 150 feet of the center line of the street or highway shall be considered within the Base Rate Area and shall be given urban service without the application of urban mileage.

Area between the Base Rate Area boundary and suburban service area boundary.

CANCELLED
DEC 01 2004
By *LAHRSI.01*
Public Service Commission
MISSOURI

Missouri Public
Service Commission

FILED DEC 01 2002

(1) See Sheet 2 for maximum allowable rates.

No supplement to this tariff will be issued except for the purpose of canceling this tariff.

MISSOURI PORTION-
LEAVENWORTH-LANSING, KANSAS, EXCHANGE
4th Revised Sheet 1.01
Replacing 3rd Revised Sheet 1.01

SOUTHWESTERN BELL TELEPHONE COMPANY
LOCAL EXCHANGE TARIFF

Missouri Public

REC'D OCT 01 2001

II. RATES-(Continued)

Service Commission

Footnotes:

- (1) Urban service applicable within the Base Rate Area; where urban service is furnished outside, urban mileage charges are applicable as set forth below:

CURRENT RATES (1)

One-party line stations & Private Branch Exchange Trunks	\$1.13(CR)
Party lines Stations, each	.83(CR)

Urban mileage charges, as shown above, apply to customers having urban service who are located within the suburban service area. In those cases where the Base Rate Area boundary follows the center line of a street or highway, all dwellings or structures facing or adjoining this street or highway and within 150 feet of the center line of the street or highway shall be considered within the Base Rate Area and shall be given urban service without the application of urban mileage.

- (2) Area between the Base Rate Area boundary and suburban service area boundary.

CANCELLED

DEC 01 2002

SMRS 1.01
Missouri Public Service Commission
MISSOURI

- (1) See Sheet 2 for maximum allowable rates.

Issued: October 1, 2001

Effective: December 1, 2001

By JAN NEWTON, President-Missouri
Southwestern Bell Telephone Company
St. Louis, Missouri

Missouri Public

FILED DEC 01 2001

Service Commission

No supplement to this tariff will be issued except for the purpose of canceling this tariff.

MISSOURI PORTION-
LEAVENWORTH-LANSING, KANSAS, EXCHANGE
3rd Revised Sheet 1.01
Replacing 2nd Revised Sheet 1.01

SOUTHWESTERN BELL TELEPHONE COMPANY
LOCAL EXCHANGE TARIFF

Missouri Public
Service Commission

REC'D OCT 02 2000

II. RATES-(Continued)

Footnotes:

- (1) Urban service applicable within the Base Rate Area; where urban service is furnished outside, urban mileage charges are applicable as set forth below:

(AT)

CURRENT RATES (1)

One-party line stations & Private Branch Exchange Trunks	\$1.14(CR)
Party lines Stations, each	.84(CR)

Urban mileage charges, as shown above, apply to customers having urban service who are located within the suburban service area. In those cases where the Base Rate Area boundary follows the center line of a street or highway, all dwellings or structures facing or adjoining this street or highway and within 150 feet of the center line of the street or highway shall be considered within the Base Rate Area and shall be given urban service without the application of urban mileage.

- (2) Area between the Base Rate Area boundary and suburban service area boundary.

CANCELLED

DEC 01 2001
By 442RS/01
Public Service Commission
MISSOURI

Missouri Public
Service Commission

FILED DEC 01 2000

- (AT) (1) See Sheet 2 for maximum allowable rates.

Issued: October 2, 2000

Effective: December 1, 2000

By JAN NEWTON, President-Missouri
Southwestern Bell Telephone Company
St. Louis, Missouri

No supplement to this tariff will be issued except for the purpose of canceling this tariff.

MISSOURI PORTION-
LEAVENWORTH-LANSING, KANSAS, EXCHANGE
2nd Revised Sheet 1.01
Replacing 1st Revised Sheet 1.01

SOUTHWESTERN BELL TELEPHONE COMPANY
LOCAL EXCHANGE TARIFF

RECEIVED

MAR 20 1989

II. RATES-(Continued)

Footnotes:

MISSOURI
Public Service Commission

- (1) Urban service applicable within the Base Rate Area; where urban service is furnished outside, urban mileage charges are applicable as set forth below:

Within Suburban Service Area(2):	<u>Monthly Rate</u>
One-party line stations and Private Branch Exchange trunks. .	\$1.15
Party line stations, each85

Urban mileage charges, as shown above, apply to customers having urban service who are located within the suburban service area. In those cases where the Base Rate Area boundary follows the center line of a street or highway, all dwellings or structures facing or adjoining this street or highway and within 150 feet of the center line of the street or highway shall be considered within the Base Rate Area and shall be given urban service without the application of urban mileage.

- (2) Area between the Base Rate Area boundary and suburban service area boundary.

(RT)

(T)

CANCELLED

DEC 01 2000
By 3rd RS 1.01
Public Service Commission
MISSOURI

Issued: MAR 27 1989

Effective: MAY 27 1989

FILED

By R. D. BARRON, President-Missouri Division.
Southwestern Bell Telephone Company
St. Louis, Missouri

MAY 27 1989

Public Service Commission

P.S.C. Mo. - No. 17
Missouri Portion-

Southwestern Bell Telephone, L.P.
d/b/a AT&T Missouri

Leavenworth-Lansing, Kansas Exchange
8th Revised Sheet 2
Replacing 7th Revised Sheet 2

LOCAL EXCHANGE TARIFF

II. RATES (cont'd)

	Maximum Rates	
	<u>Business</u>	<u>Residence</u>
1. Flat Rate Service		
One-Party	\$19.93(CR)	\$10.14(CR)
Two-Party	N/A	7.02(CR)
Lifeline	N/A	(1)
2. Urban Mileage		
	Maximum Rates	
One-party line stations and Private Branch Exchange Trunks		\$1.09
Party line Stations, each		.80

- (1) A customer eligible under established criteria can receive a discount from his or her bill for residential essential local telecommunications services, in accordance with P.S.C. Mo. – No. 24, Local Exchange Tariff, Section 1.2.2.E, regarding Lifeline Service.

Issued: October 17, 2006

Effective: December 1, 2006

By CINDY BRINKLEY, President – Missouri
St. Louis, Missouri

No Supplement to this tariff will be issued except for the purpose of canceling this tariff.

Missouri Portion-
Leavenworth-Lansing, Kansas Exchange
7th Revised Sheet 2
Replacing 6th Revised Sheet 2

LOCAL EXCHANGE TARIFF

II. RATES (cont'd)

		<u>Maximum Rates</u>	
		<u>Business</u>	<u>Residence</u>
1.	Flat Rate Service		
	One-Party	\$19.88(CR)	\$10.12(CR)
	Two-Party	N/A	7.00(CR)
	Lifeline	N/A	(1)
2.	Urban Mileage	Maximum Rates	
	One-party line stations and Private Branch Exchange Trunks		\$1.09(CR)
	Party line Stations, each		.80(CR)

(1) A customer eligible under established criteria can receive a discount from his or her bill for residential essential local telecommunications services, in accordance with P.S.C. Mo. – No. 24, Local Exchange Tariff, Section 1.2.2.E, regarding Lifeline Service.

Issued: October 17, 2005

Effective: December 1, 2005

By CINDY BRINKLEY, President-SBC Missouri
Southwestern Bell Telephone, L.P., d/b/a SBC Missouri
St. Louis, Missouri

Cancelled

December 1, 2006

Missouri Public
Service Commission

Filed

Missouri Public
Service Commission

No Supplement to this tariff will be issued except for the purpose of canceling this tariff.

Missouri Portion-
Leavenworth-Lansing, Kansas Exchange
6th Revised Sheet 2
Replacing 5th Revised Sheet 2

(RT)

LOCAL EXCHANGE TARIFF

II. RATES (cont'd)

		Maximum Rates	
		<u>Business</u>	<u>Residence</u>
1.	Flat Rate Service		
	One-Party	\$20.27	\$10.33
	Two-Party	N/A	7.14
(CT)(CR)	Lifeline	N/A	(1)
2.	Urban Mileage		
		Maximum Rates	
(CT)	One-party line stations and Private Branch Exchange Trunks		\$1.11
	Party line Stations, each		.82

CANCELLED

DEC 01 2005

By *746 RS 2*
Public Service Commission
MISSOURI

- (AT) (1) A customer eligible under established criteria can receive a discount from his or her bill for residential essential local telecommunications services, in accordance with P.S.C. Mo. – No. 24, Local Exchange Tariff, Section 1.2.2.E, regarding Lifeline Service.
- (AT)

Issued: April 1, 2005

Effective: May 1, 2005

By CINDY BRINKLEY, President-SBC Missouri
Southwestern Bell Telephone, L.P., d/b/a SBC Missouri
St. Louis, Missouri

TO-1998-0329

FILED
MO PSC

No Supplement to this tariff will be issued except for the purpose of canceling this tariff.

Missouri Portion-
Leavenworth-Lansing, Kansas, Exchange
5th Revised Sheet 2
Replacing 4th Revised Sheet 2

SOUTHWESTERN BELL TELEPHONE COMPANY
LOCAL EXCHANGE TARIFF

II. RATES (cont'd)

	Maximum Rates	
	<u>Business</u>	<u>Residence</u>
1. Flat Rate Service		
One-Party	\$20.27(CR)	\$10.33(CR)
Two-Party	N/A	7.14
Lifeline(1)	N/A	6.83(CR)
2. Urban Mileage	Maximum Rates	
One-party line stations & Private Branch Exchange Trunks		\$1.11(CR)
Party line Stations, each		.82(CR)

CANCELLED

MAY 01 2005
letnRS 2
Public Service Commission
MISSOURI

(1) See P.S.C. Mo. – No. 24, Local Exchange Tariff, Section 1.2.2.E, for description, terms and conditions related to Lifeline Service.

Issued: October 15, 2004

Effective: December 1, 2004

By CINDY BRINKLEY, President-SBC Missouri
Southwestern Bell Telephone, L.P., d/b/a SBC Missouri
St. Louis, Missouri

**FILED
MO PSC**

No Supplement to this tariff will be issued except for the purpose of canceling this tariff.

Missouri Portion-
Leavenworth-Lansing, Kansas, Exchange
4th Revised Sheet 2
Replacing 3rd Revised Sheet 2
Missouri Public

SOUTHWESTERN BELL TELEPHONE COMPANY Service Commission
LOCAL EXCHANGE TARIFF

REC'D **MAY 10 2004**

II. RATES (cont'd)

		<u>Maximum Rates</u>	
		<u>Business</u>	<u>Residence</u>
1.	Flat Rate Service		
	One-Party	\$20.83	\$10.61
	Two-Party	N/A	7.34
(AT)	Lifeline(1)	N/A	7.11(NR)
2.	Urban Mileage		
	One-party line stations & Private Branch Exchange Trunks		\$1.14
	Party line Stations, each		.84

CANCELLED

DEC 01 2004
By *54hRS2*
Public Service Commission
MISSOURI

(AT) (1) See P.S.C. Mo. - No. 24, Local Exchange Tariff, Section 1.2.2.E, for description, terms and conditions related to Lifeline Service.

Issued: May 10, 2004

Effective: June 9, 2004

By CINDY BRINKLEY, President-SBC Missouri
Southwestern Bell Telephone, L.P., d/b/a SBC Missouri
St. Louis, Missouri

Missouri Public
Service Commission

FILED JUN 09 2004

No Supplement to this tariff will be issued except for the purpose of canceling this tariff.

Missouri Portion-
Leavenworth-Lansing, Kansas, Exchange
3rd Revised Sheet 2
Replacing 2nd Revised Sheet 2

SOUTHWESTERN BELL TELEPHONE COMPANY
LOCAL EXCHANGE TARIFF

REC'D OCT 15 2003

II. RATES (cont'd)

	Service Commission Maximum Rates	
	Business	Residence
1. Flat Rate Service		
One-Party	\$20.83(CR)	\$10.61(CR)
Two-Party	NA	7.34
2. Urban Mileage	Maximum Rates	
One-party line stations & Private Branch Exchange Trunks		\$1.14
Party line Stations, each		.84

CANCELLED
JUN 09 2004
By *4HRS*
Public Service Commission
MISSOURI

Issued: October 15, 2003

Effective: December 1, 2003

By CINDY BRINKLEY, President-SBC Missouri
Southwestern Bell Telephone, L.P., d/b/a SBC Missouri
St. Louis, Missouri

Missouri Public
Service Commission

FILED DEC 01 2003

No Supplement to this tariff will be issued except for the purpose of canceling this tariff.

Missouri Portion-
Leavenworth-Lansing, Kansas, Exchange
2nd Revised Sheet 2
Replacing 1st Revised Sheet 2

SOUTHWESTERN BELL TELEPHONE COMPANY LOCAL EXCHANGE TARIFF

II. RATES (cont'd)

1. Flat Rate Service	Maximum Rates	
	Business	Residence
One-Party	\$20.84(CR)	\$10.62(CR)
Two-Party	NA	7.34(CR)

2. Urban Mileage	Maximum Rates
One-party line stations & Private Branch Exchange Trunks	\$1.14(CR)
Party line Stations, each	.84(CR)

Missouri Public Service Commission

REC'D OCT 15 2002

CANCELLED

DEC 01 2003

3rd R 52
Missouri Public Service Commission
MISSOURI

Missouri Public Service Commission

FILED DEC 01 2002

Issued: October 15, 2002

Effective: December 1, 2002

By CINDY BRINKLEY, President-Missouri
Southwestern Bell Telephone, L.P., d/b/a Southwestern Bell Telephone Company
St. Louis, Missouri

No supplement to this tariff will be issued except for the purpose of canceling this tariff.

MISSOURI PORTION-
LEAVENWORTH-LANSING, KANSAS, EXCHANGE

1st Revised Sheet 2
Replacing Original Sheet 2
Missouri Public

SOUTHWESTERN BELL TELEPHONE COMPANY
LOCAL EXCHANGE TARIFF

REC'D OCT 01 2001

Service Commission

1. Flat Rate Service

MAXIMUM RATES

	<u>Business</u>	<u>Residence</u>
One-Party	\$20.65 (CR)	\$10.52 (CR)
Two-Party	N/A	7.28 (CR)

2. Urban Mileage

MAXIMUM RATES

One-party line stations & Private Branch Exchange Trunks	\$1.13 (CR)
Party lines Stations, each	.83 (CR)

CANCELLED

DEC 01 2002

2nd RS 2
Public Service Commission
MISSOURI

Issued: October 1, 2001

Effective: December 1, 2001

By JAN NEWTON, President-Missouri
Southwestern Bell Telephone Company
St. Louis, Missouri

Missouri Public

FILED DEC 01 2001

Service Commission

No supplement to this tariff will be issued except for the purpose of canceling this tariff.

MISSOURI PORTION-
LEAVENWORTH-LANSING, KANSAS, EXCHANGE
Original Sheet 2

SOUTHWESTERN BELL TELEPHONE COMPANY
LOCAL EXCHANGE TARIFF

Missouri Public
Service Commission

REC'D OCT 02 2000

1. Flat Rate Service	<u>MAXIMUM RATES</u>	
	<u>Business</u>	<u>Residence</u>
One-Party	\$20.81	\$10.60
Two-Party	N/A	7.33

2. Urban Mileage	<u>MAXIMUM RATES</u>	
One-party line stations & Private Branch Exchange Trunks	\$1.14	
Party lines Stations, each		.84

CANCELLED
DEC 01 2001
By *ERS 2*
Public Service Commission
MISSOURI

Missouri Public
Service Commission

FILED DEC 01 2000

Issued: October 2, 2000

Effective: December 1, 2000

By JAN NEWTON, President-Missouri
Southwestern Bell Telephone Company
St. Louis, Missouri



**Southwestern Bell
Telephone**

100 North Tucker Boulevard
St. Louis, Missouri 63101
Phone (314) 247-9800

May 4, 1987

RECEIVED

MAY 6 1987

Mr. Ralph Gladden
Rate and Tariff Examiner
Missouri Public Service Commission
P.O. Box 360
Jefferson City, Missouri 65102

**MISSOURI
Public Service Commission**

Dear Mr. Gladden:

This concerns our previous discussions regarding the boundary discrepancy between the Farley Exchange, located in Missouri and the Missouri Portion of the Leavenworth-Lansing, Kansas Exchange. I have attached copies of both of these exchange area maps depicting the location of the discrepancy.

Our Kansas coordinates have agreed that the Farley, Missouri Exchange Map is correct and the Missouri Portion of the Leavenworth-Lansing, Kansas Exchange Area Map will require revisions. The Kansas Rate Administration office will take responsibility for correcting this map.

As soon as we receive these revised maps, I will file a corrected copy with the Commission.

If you have any questions concerning this matter, please contact me on (314) 247-5765.

Very truly yours,

Staff Manager
Rate Administration

Attachments

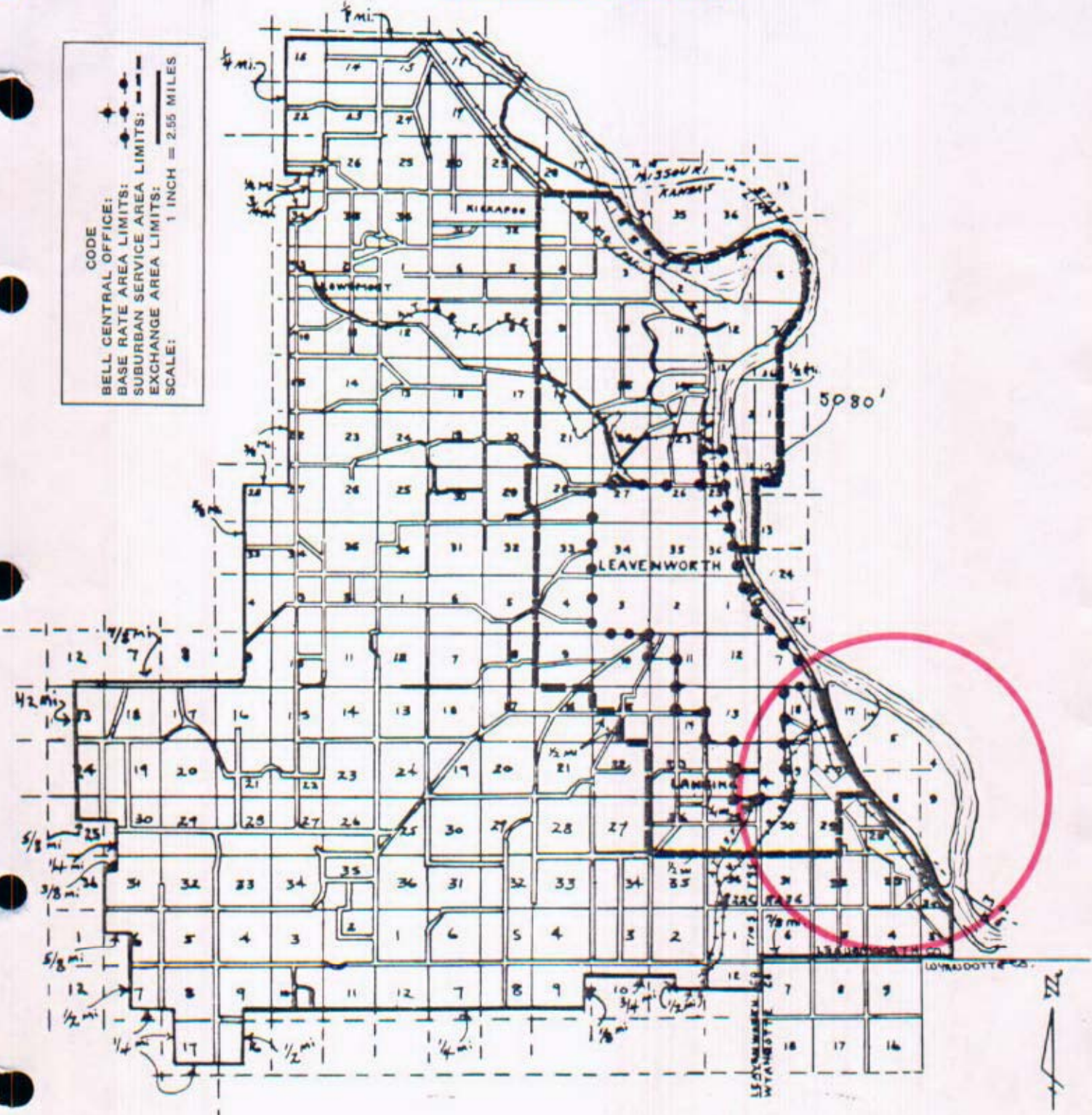
NO SUPPLEMENT TO THIS TARIFF WILL BE ISSUED EXCEPT FOR THE PURPOSE OF CANCELING THIS TARIFF.

Missouri Portion-Leavenworth-Lansing, Kansas Exchange

1st REVISED SHEET 2
REPLACING ORIGINAL SHEET 2

EXCHANGE AREA MAP

CODE
BELL CENTRAL OFFICE:
BASE RATE AREA LIMITS:
SUBURBAN SERVICE AREA LIMITS:
EXCHANGE AREA LIMITS:
SCALE: 1 INCH = 2.55 MILES



Issued: June 6, 1973

Effective: July 6, 1973

CANCELLED
June 29, 2007
TO-2002-185
Missouri Public
Service Commission

By R. R. SHOCKLEY, Vice President, Missouri-Illinois
Southwestern Bell Telephone Company
St. Louis, Missouri

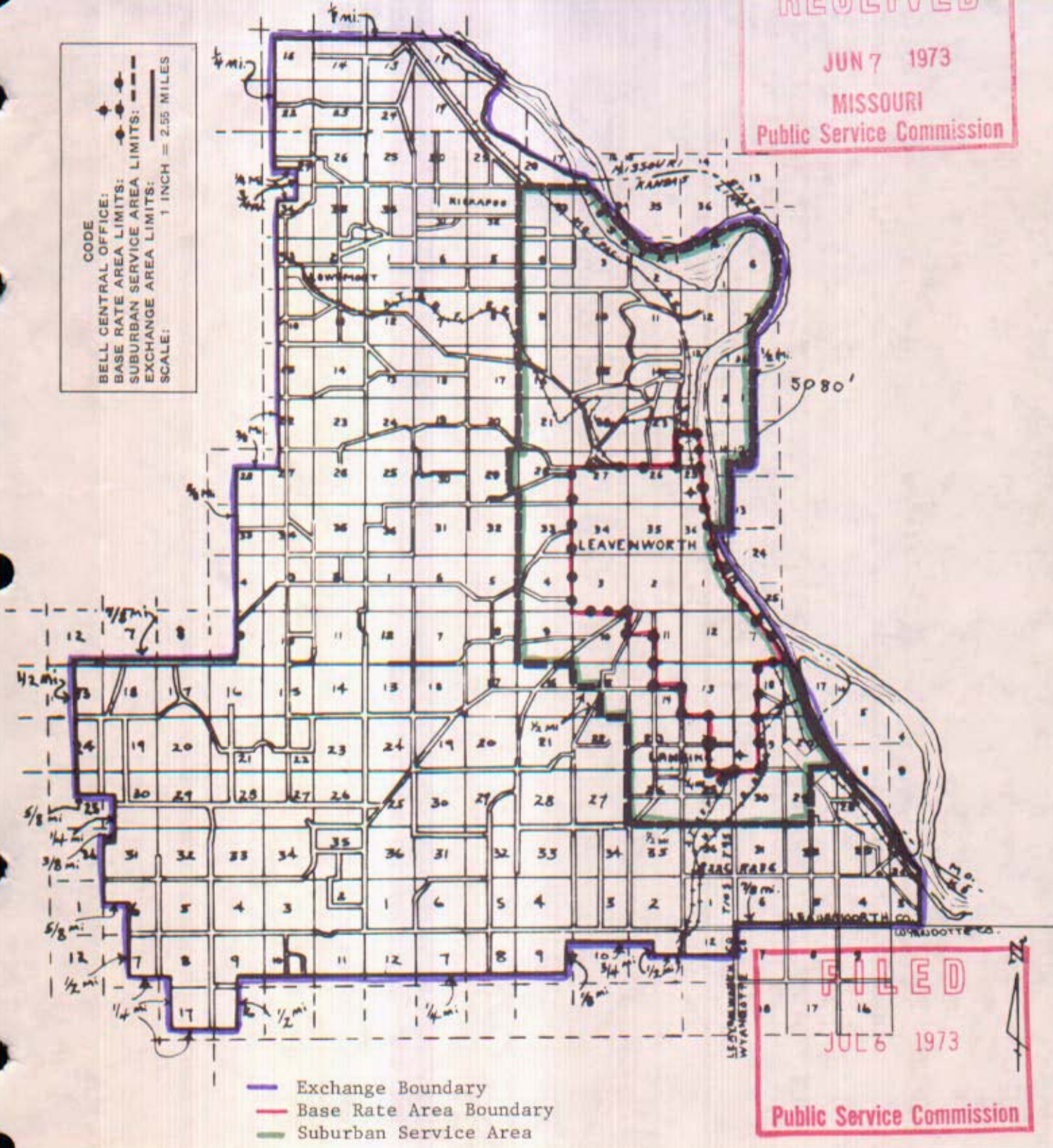
NO SUPPLEMENT TO THIS TARIFF WILL
 BE ISSUED EXCEPT FOR THE PURPOSE OF
 CANCELING THIS TARIFF.

Missouri Portion-Leavenworth-Lansing, Kansas Exchange
 1st REVISED SHEET 2
 REPLACING ORIGINAL SHEET 2

EXCHANGE AREA MAP

RECEIVED
 JUN 7 1973
 MISSOURI
 Public Service Commission

CODE
 BELL CENTRAL OFFICE:
 ---●---
 BASE RATE AREA LIMITS:
 ---●---
 SUBURBAN SERVICE AREA LIMITS:
 ---●---
 EXCHANGE AREA LIMITS:
 ---●---
 SCALE:
 1 INCH = 2.55 MILES



FILED
 JUL 6 1973
 Public Service Commission

Issued: June 6, 1973

Effective: July 6, 1973

CANCELLED
 June 29, 2007
 TO-2002-185
 Missouri Public
 Service Commission

By R. R. SHOCKLEY, Vice President, Missouri-Illinois
 Southwestern Bell Telephone Company
 St. Louis, Missouri

SBC PSC MO #17
Lilbourn, Missouri
1st Revised Sheet 2
Replacing Original Sheet 2

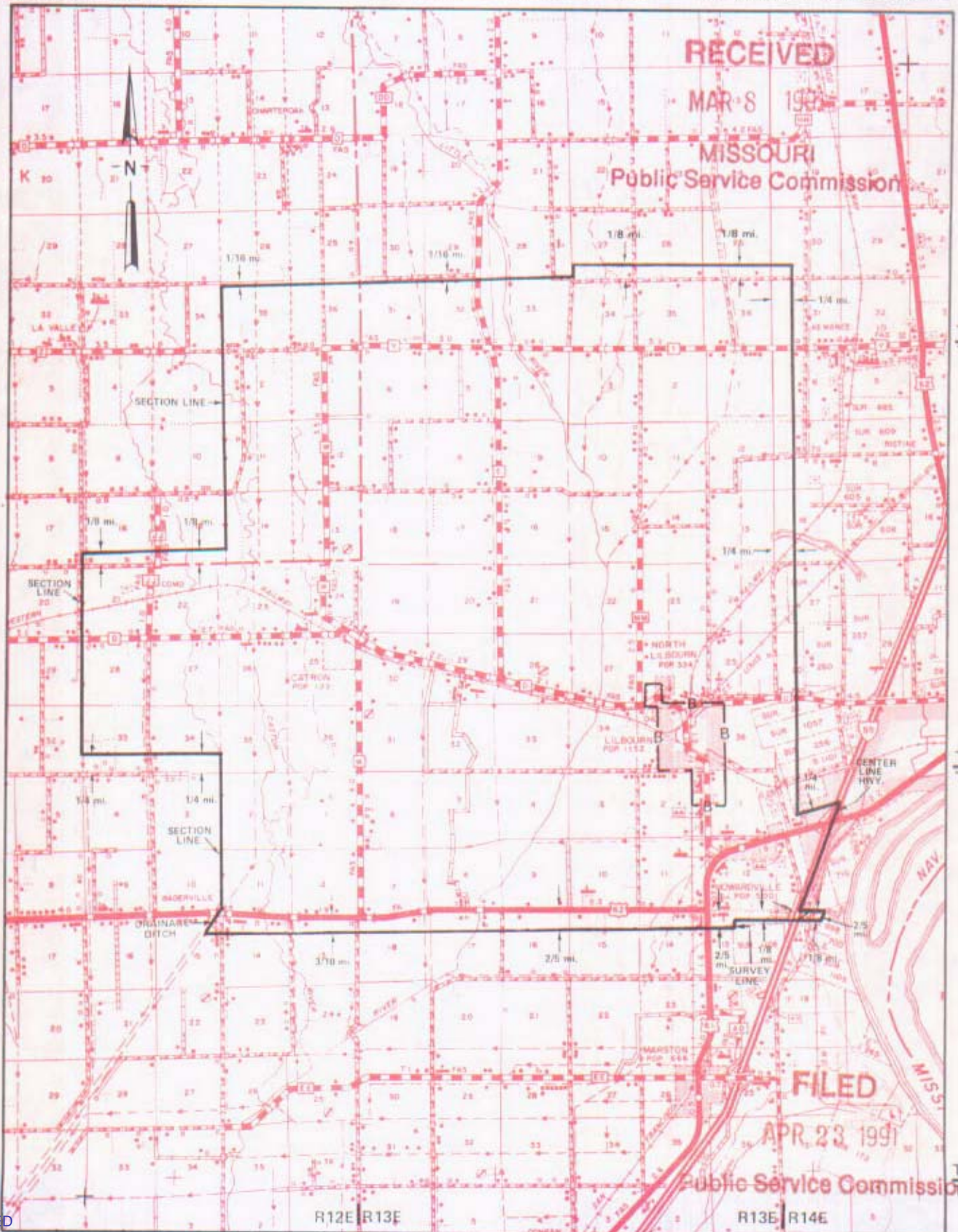
Non-Scannable Map

(Is viewable in the Data Center
200 Madison Street, 1st Floor
Jefferson City MO)

NO SUPPLEMENT TO THIS TARIFF WILL BE ISSUED EXCEPT FOR THE PURPOSE OF CANCELING THIS TARIFF.

P. S. C. Mo. No. 17
EXCHANGE AREA MAP

10th REVISED SHEET 3
REPLACING 9th REVISED SHEET 3



CANCELLED
June 29, 2007
TO-2002-185
Missouri Public
Service Commission

Issued: March 8, 1991

By R. D. BARRON, PRESIDENT, MISSOURI DIVISION
Southwestern Bell Telephone Company
St. Louis, Missouri

Effective: April 23, 1991

NO SUPPLEMENT TO THIS TARIFF WILL
BE ISSUED EXCEPT FOR THE PURPOSE OF
CANCELING THIS TARIFF.

P. S. C. Mo. No. 17
BASE RATE AREA MAP

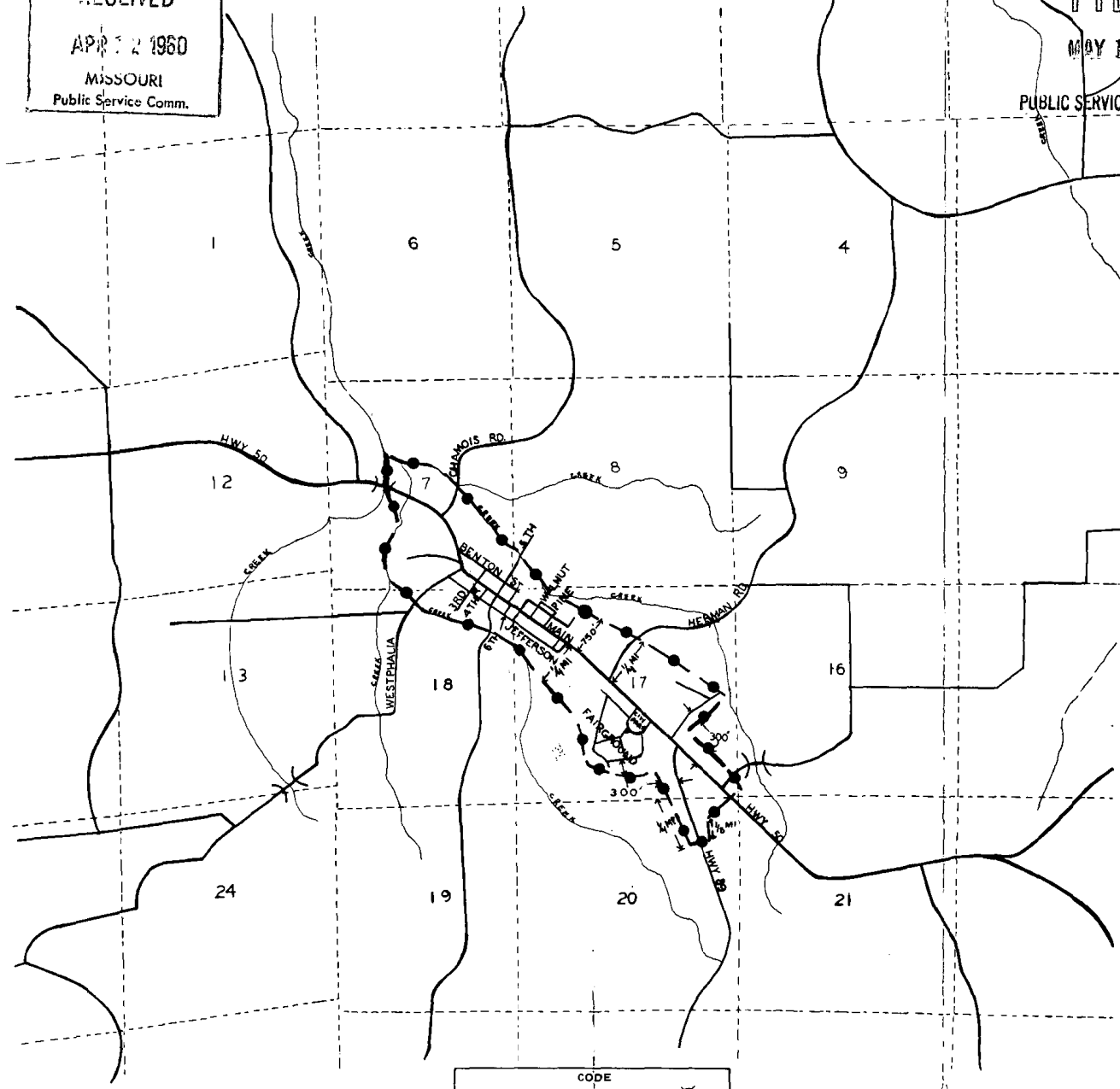
Linn, Missouri
1st REVISED SHEET 2
REPLACING ORIGINAL SHEET 2

CANCELLED
June 29, 2007
TO-2002-185
Missouri Public
Service Commission

RECEIVED
APR 12 1960
MISSOURI
Public Service Comm.

FILED
MAY 15 1960
PUBLIC SERVICE COMMISSION

LINN, MO.



CODE
BELL CENTRAL OFFICE: *
BASE RATE AREA LIMITS: -o-o-o-



Issued: April 15, 1960

By F. B. HUNT, Vice President and General Manager
Southwestern Bell Telephone Company
St. Louis, Missouri

Effective: May 15, 1960

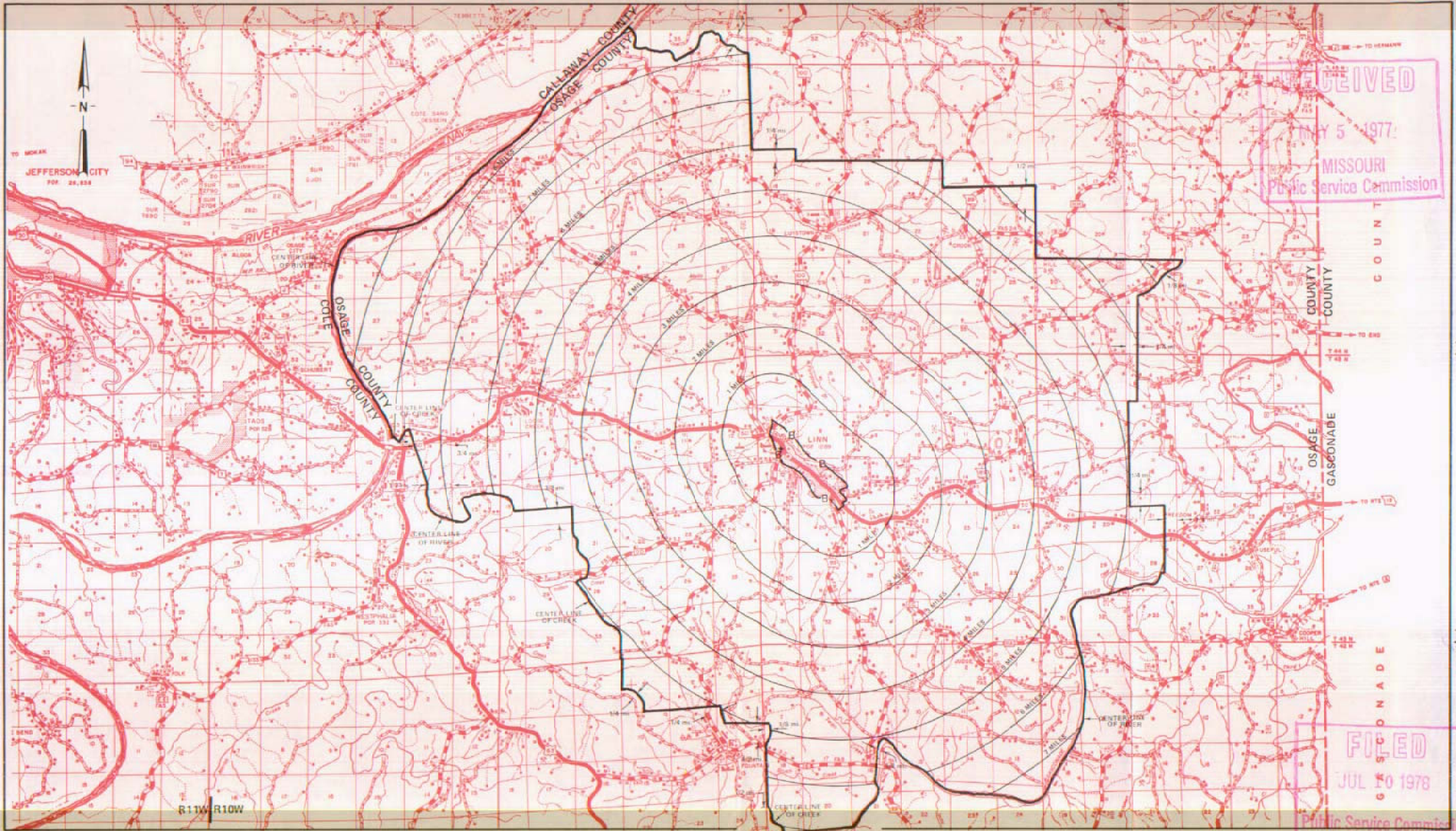
CANCELLED
June 29, 2007
TO-2002-185
Missouri Public
Service Commission

NO SUPPLEMENT TO THIS TARIFF WILL
BE ISSUED EXCEPT FOR THE PURPOSE OF
CANCELING THIS TARIFF.

P. S. C. Mo. No. 17
EXCHANGE AREA MAP

Linn, Missouri

6th REVISED SHEET 3
REPLACING 5th REVISED SHEET 3



RECEIVED
MAY 5 1977
MISSOURI
Public Service Commission

FILED
JUL 10 1978
MISSOURI
Public Service Commission

Issued: MAY 10 1977

By, R. R. SHOCKLEY, Vice President, Missouri
Southwestern Bell Telephone
St. Louis, Missouri

R9W | R8W

R8W | R7W

R7W | R6W

Effective: JUL 10 1978

NO SUPPLEMENT TO THIS TARIFF WILL BE ISSUED EXCEPT FOR THE PURPOSE OF CANCELING THIS TARIFF.

✓ LINN CREEK, MISSOURI
OSAGE BEACH-LINN CREEK
First Revised Sheet 3
Replacing Original Sheet 3

P.S.C. Mo. 1
(Canceling all Previous Schedules)
EXCHANGE AND INITIAL RATE AREA MAP



LINN CREEK, MO. - SCALE 1/2" = 1 MILE

FILED
JAN 17 1948
Missouri Public Service Commission

CODE
CENTRAL OFFICE: ◆
INITIAL RATE AREA LIMITS: ◆◆◆◆
EXCHANGE AREA LIMITS: ————
SCALE: 1/2 INCH = 1 MILE

Issued: December 17, 1947

Effective: January 17, 1948

By T. L. LEONARD, President
Ozark Central Telephone Company
St. Louis, Missouri

CANCELLED
June 29, 2007
TO-2002-185
Missouri Public
Service Commission

NO SUPPLEMENT TO THIS TARIFF WILL
BE ISSUED EXCEPT FOR THE PURPOSE
OF CANCELING THIS TARIFF.

LINN CREEK, MISSOURI
Linn Creek Zone
2ND REVISED SHEET 1
CANCELING 1ST REVISED SHEET 1

RECEIVED
AUG 29 1950
MISSOURI
Public Service Comm.

For rates and practices relating to Linn Creek, please refer to the Camdenton,
Missouri Local Exchange Tariff.

FILED

OCT 1 1950

PUBLIC SERVICE COMMISSION

Issued: August 28, 1950

Effective: October 1, 1950

By T. L. LEONARD, President
Ozark Central Telephone Company
St. Louis, Missouri

No supplement to this tariff will be issued except for the purpose of canceling this tariff.

P. S. C. Mo. - No. 17

LOCKWOOD, MISSOURI

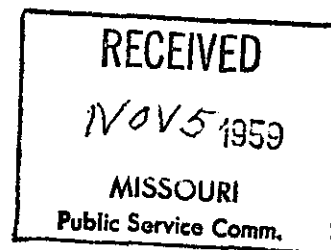
Original Sheet 1
Canceling Western Light and Telephone Company's
Local Exchange Tariffs P.S. C. MO. No. 3
4th Revised Sheet 1
4th Revised Sheet 2
1st Revised Sheet 3.01

For local rates applicable to Lockwood please refer to the local exchange tariff Sheet 1 and Sheet 1-C.

FILED

DEC 17 1959

PUBLIC SERVICE COMMISSION



Issued: November 17, 1959

Effective: December 17, 1959

By E. G. GREBER, Vice President and General Manager
Southwestern Bell Telephone Company
St. Louis, Missouri

CANCELLED
June 29, 2007
TO-2002-185
Missouri Public
Service Commission

**SBC PSC MO #17
Lockwood, Missouri**

Original Sheet 2

Replacing Western Light and Telephone Company

P.S.C. Mo. No. 3

Original Sheet 5

**Non-Scannable
Map**

**(Is viewable in the Data Center
200 Madison Street, 1st Floor
Jefferson City MO)**

NO SUPPLEMENT TO THIS TARIFF WILL BE ISSUED EXCEPT FOR THE PURPOSE OF CANCELING THIS TARIFF.

P. S. C. Mo. No. 17

EXCHANGE AREA MAP

Lockwood, Missouri
4th REVISED SHEET
REPLACING 3rd REVISED SHEET

JUL 11 1977

MISSOURI
Public Service Commission

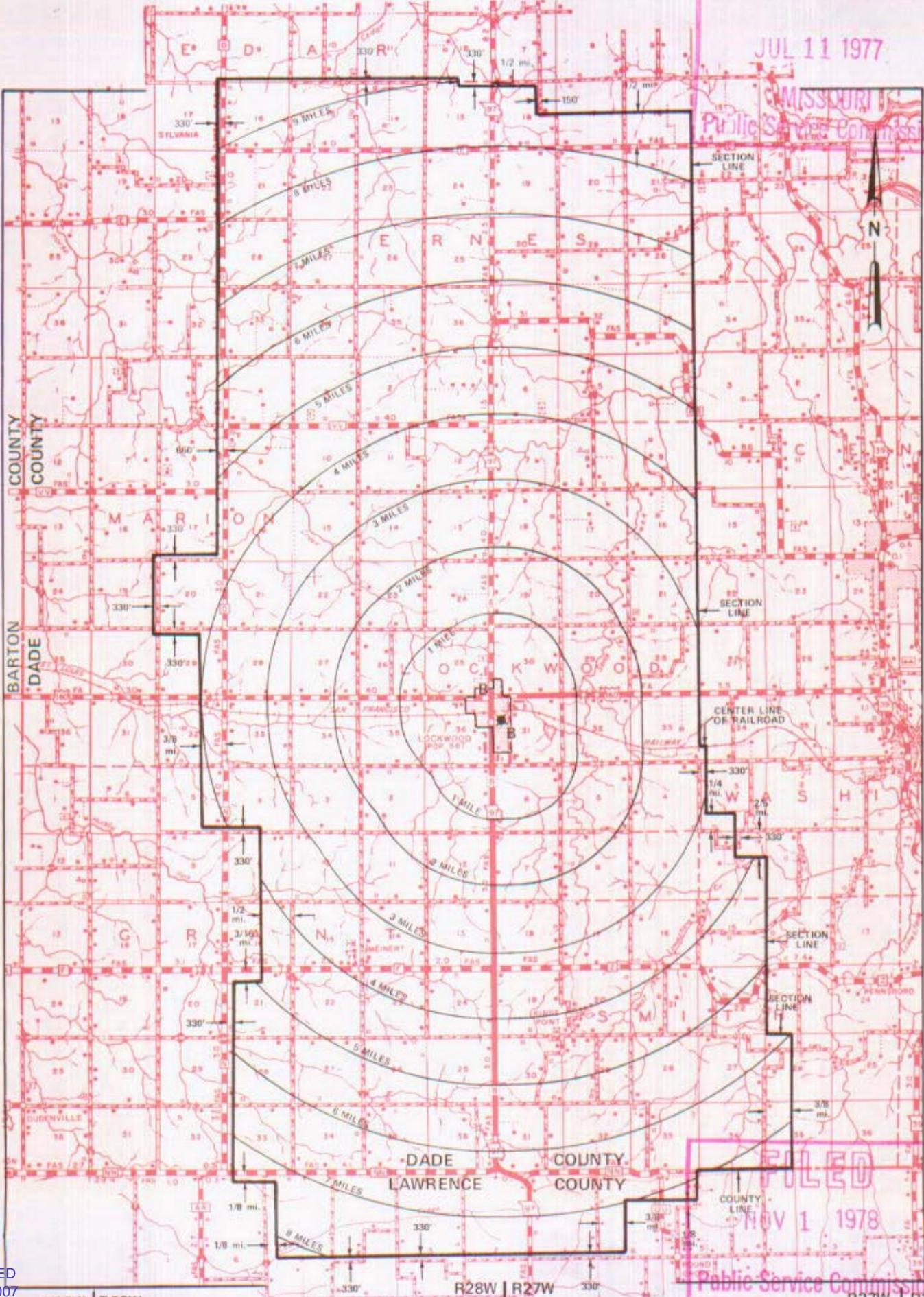
T32N
T31N

T31N
T30N

T30N
T29N

FILED
NOV 1 1978
Public Service Commission

NOV 1 - 1978



CANCELLED
June 29, 2007
TO-2002-185
Missouri Public
Service Commission

By R. R. SHOCKLEY, Vice President, Missouri
Southwestern Bell Telephone Company

NO SUPPLEMENT TO THIS TARIFF WILL
BE ISSUED EXCEPT FOR THE PURPOSE OF
CANCELING THIS TARIFF.

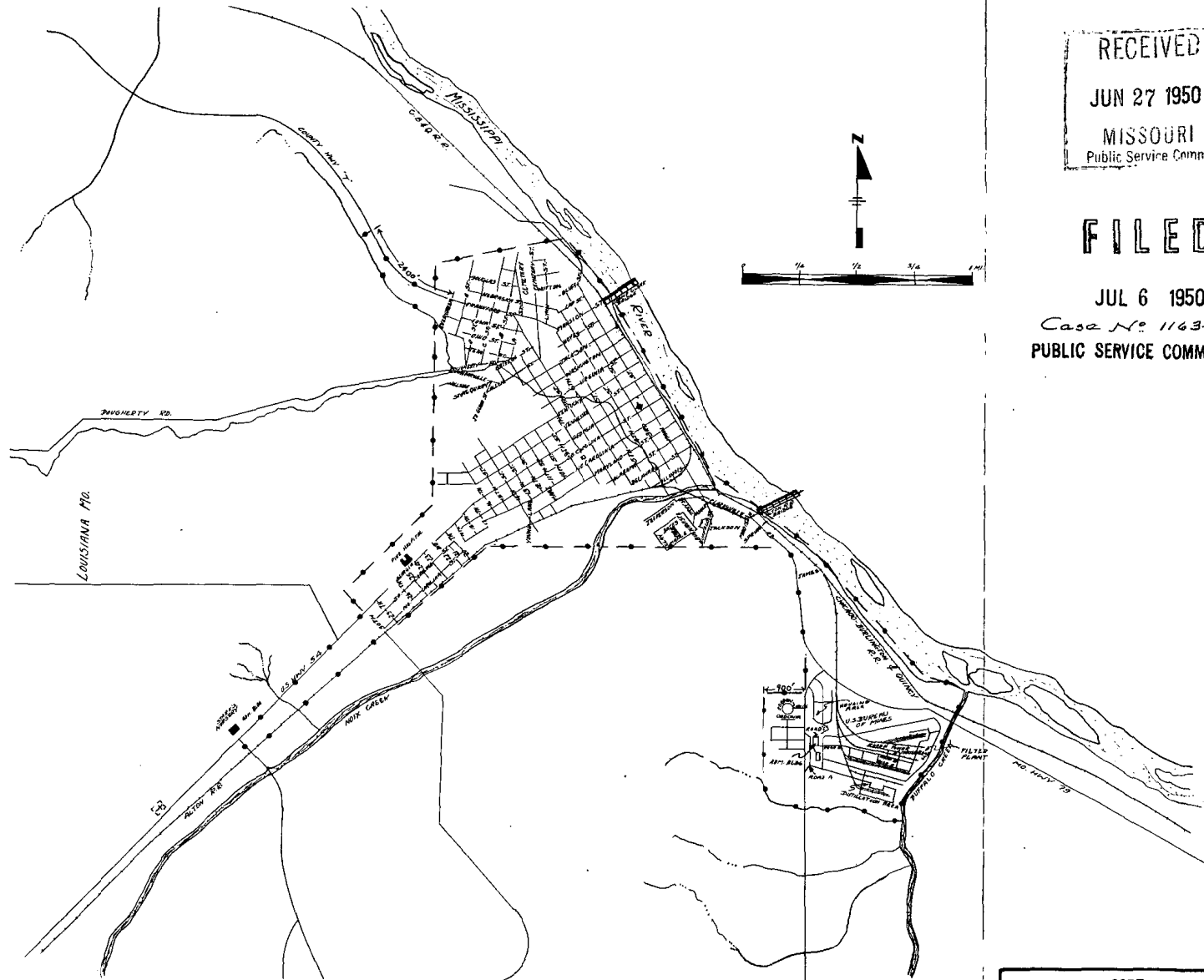
P. S. C.-Mo. No. 17
BASE RATE AREA MAP

Louisiana, Missouri
ORIGINAL SHEET 2
REPLACING ORIGINAL SHEET 1-A

RECEIVED
JUN 27 1950
MISSOURI
Public Service Comm.

FILED

JUL 6 1950
Case No 11634
PUBLIC SERVICE COMMISSION



CANCELLED
June 29, 2007
TO-2002-185
Missouri Public
Service Commission

Issued: June 27, 1950

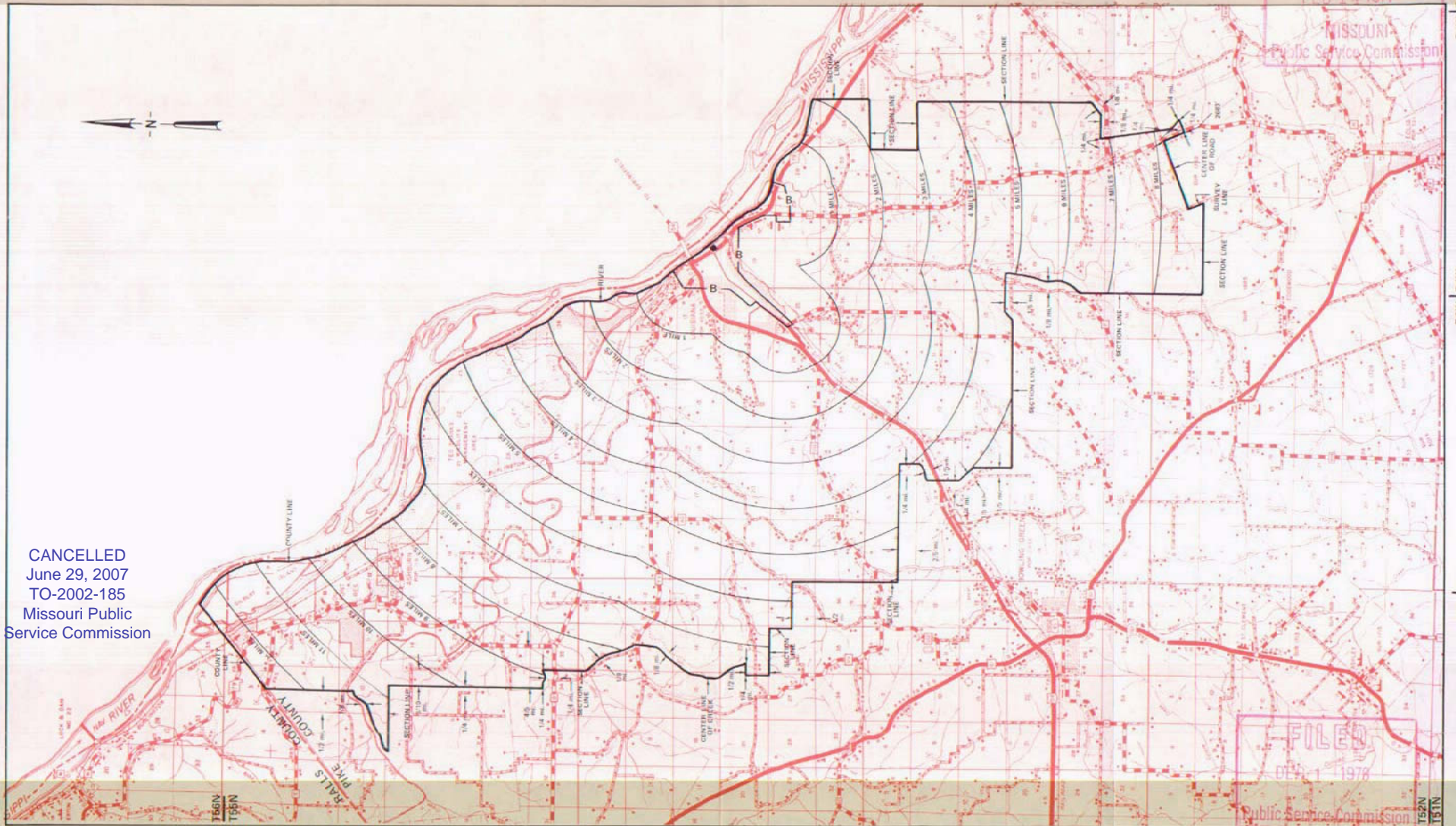
By H. R. TOWLES, General Manager
Southwestern Bell Telephone Company
St. Louis, Missouri

Effective: July 6, 1950

NO SUPPLEMENT TO THIS TARIFF WILL BE ISSUED EXCEPT FOR THE PURPOSE OF CANCELING THIS TARIFF.

P. S. C. Mo. No. 17
EXCHANGE AREA MAP

RECEIVED
Louisiana, Missouri
11th REVISED SHEET 3
REPLACING 10th REVISED SHEET 3
FEB 14 1977
MISSOURI
Public Service Commission



CANCELLED
June 29, 2007
TO-2002-185
Missouri Public
Service Commission

FILED
DEC 1 1976
Public Service Commission

By R. R. SHOCKLEY, Vice President, Missouri
Southwestern Bell Telephone Company
St. Louis, Missouri

Issued: February 15, 1977

Effective: DEC 1 1978