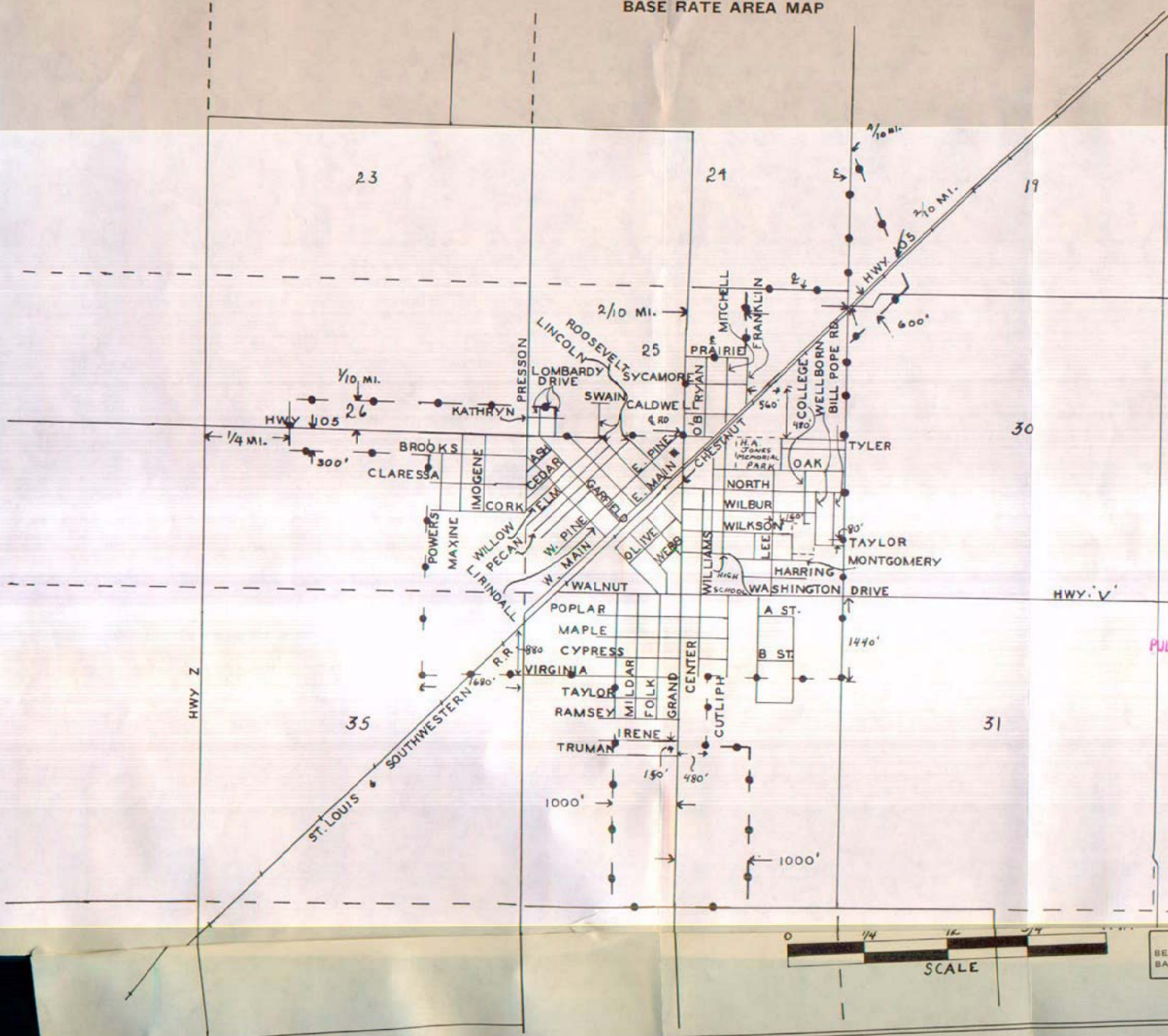


P. S. C. MO. No. 17
BASE RATE AREA MAP

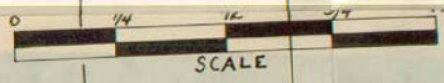
RECEIVED
JAN 2 - 1962
MISSOURI
Public Service Comm.

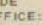

EAST PRAIRIE, MO.



FEB 4 - 1962

PUBLIC SERVICE COMMISSION

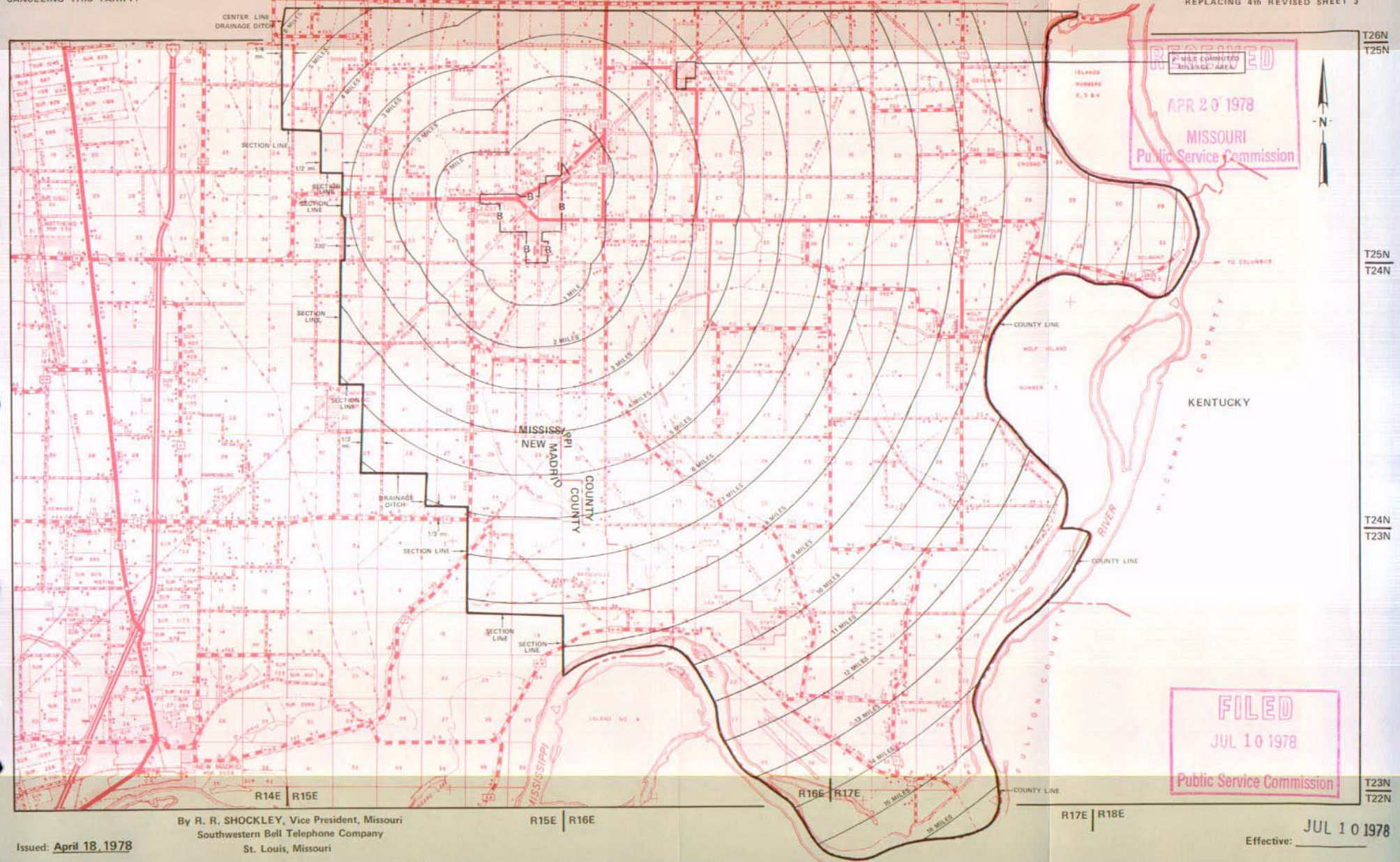


CODE
BELL CENTRAL OFFICE: 
BASE RATE AREA LIMITS: 

NO SUPPLEMENT TO THIS TARIFF WILL
BE ISSUED EXCEPT FOR THE PURPOSE OF
CANCELING THIS TARIFF.

P. S. C. Mo. No. 17
EXCHANGE AREA MAP

East Prairie, Missouri
5th REVISED SHEET 3
REPLACING 4th REVISED SHEET 3



RECEIVED
2 1/2 MILE COMPUTED
EXCHANGE AREA
APR 20 1978
MISSOURI
Public Service Commission



FILED
JUL 10 1978
Public Service Commission

By R. R. SHOCKLEY, Vice President, Missouri
Southwestern Bell Telephone Company
St. Louis, Missouri

Issued: April 18, 1978

Effective: JUL 10 1978

CANCELLED
June 29, 2007
TO-2002-185
Missouri Public
Service Commission

SBC PSC MO #17
Edina, Missouri
1st Revised Sheet 2
Replacing Original Sheet 2

Non-Scannable Map

(Is viewable in the Data Center
200 Madison Street, 1st Floor
Jefferson City MO)

NO SUPPLEMENT TO THIS TARIFF WILL BE ISSUED EXCEPT FOR THE PURPOSE OF CANCELING THIS TARIFF.

CANCELLED
June 29, 2007
TO-2002-185
Missouri Public
Service Commission

P. S. C. Mo. No. 17 EXCHANGE AREA MAP

Edina, Missouri

7th REVISED SHEET 3
REPLACING 6th REVISED SHEET 3

RECEIVED

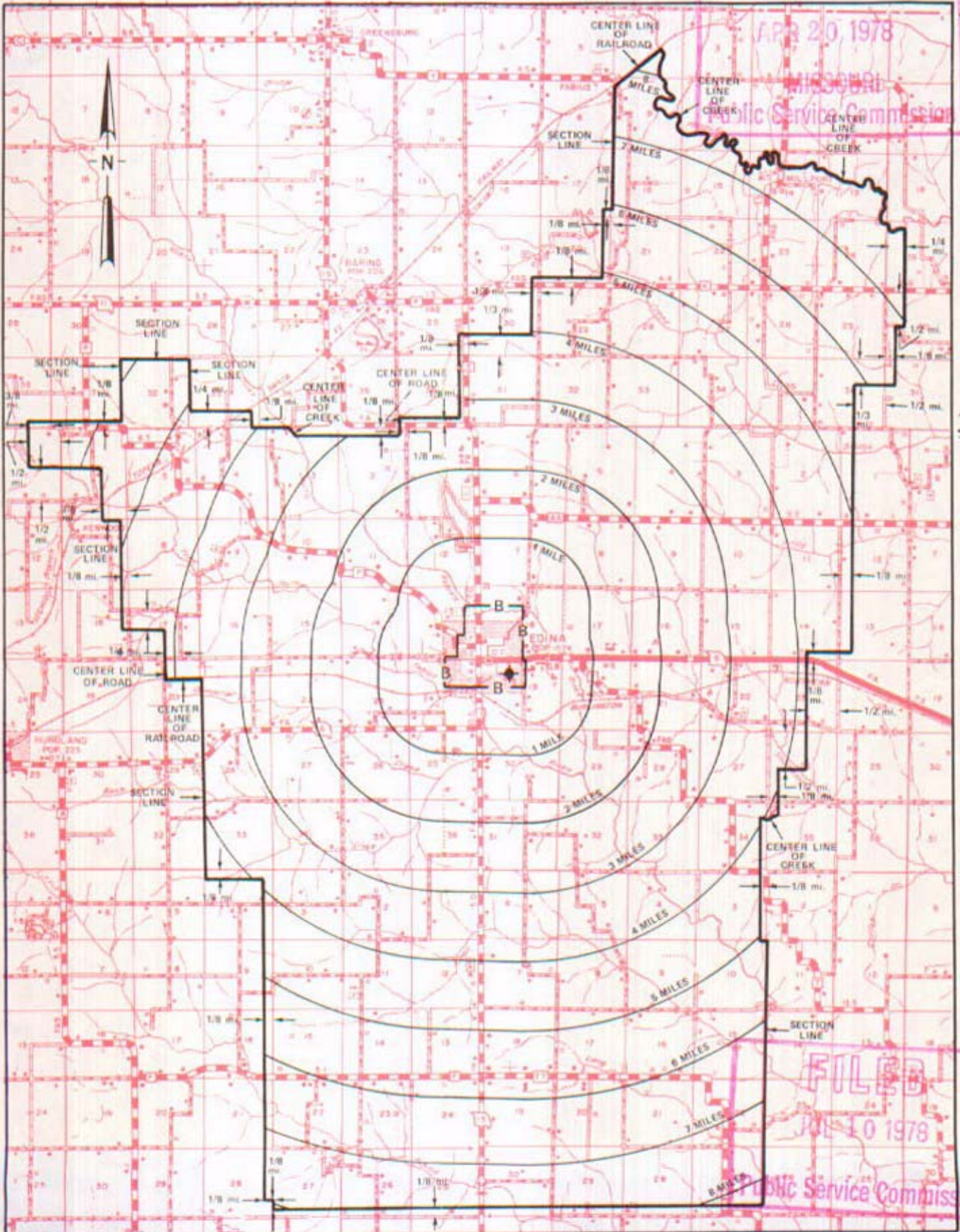
APR 20 1978

MISSOURI
Public Service Commission

T64N
T63N

T63N
T62N

T62N
T61N



R13W | R12W

R12W | R11W

R11W | R10W

By R. R. SHOCKLEY, Vice President, Missouri
Southwestern Bell Telephone Company

JUL 10 1978

FILED
JUL 10 1978
Public Service Commission

SBC PSC MO #17
Eldon, Missouri
1st Revised Sheet 2
Replacing Original Sheet 2

Non-Scannable Map

(Is viewable in the Data Center
200 Madison Street, 1st Floor
Jefferson City MO)

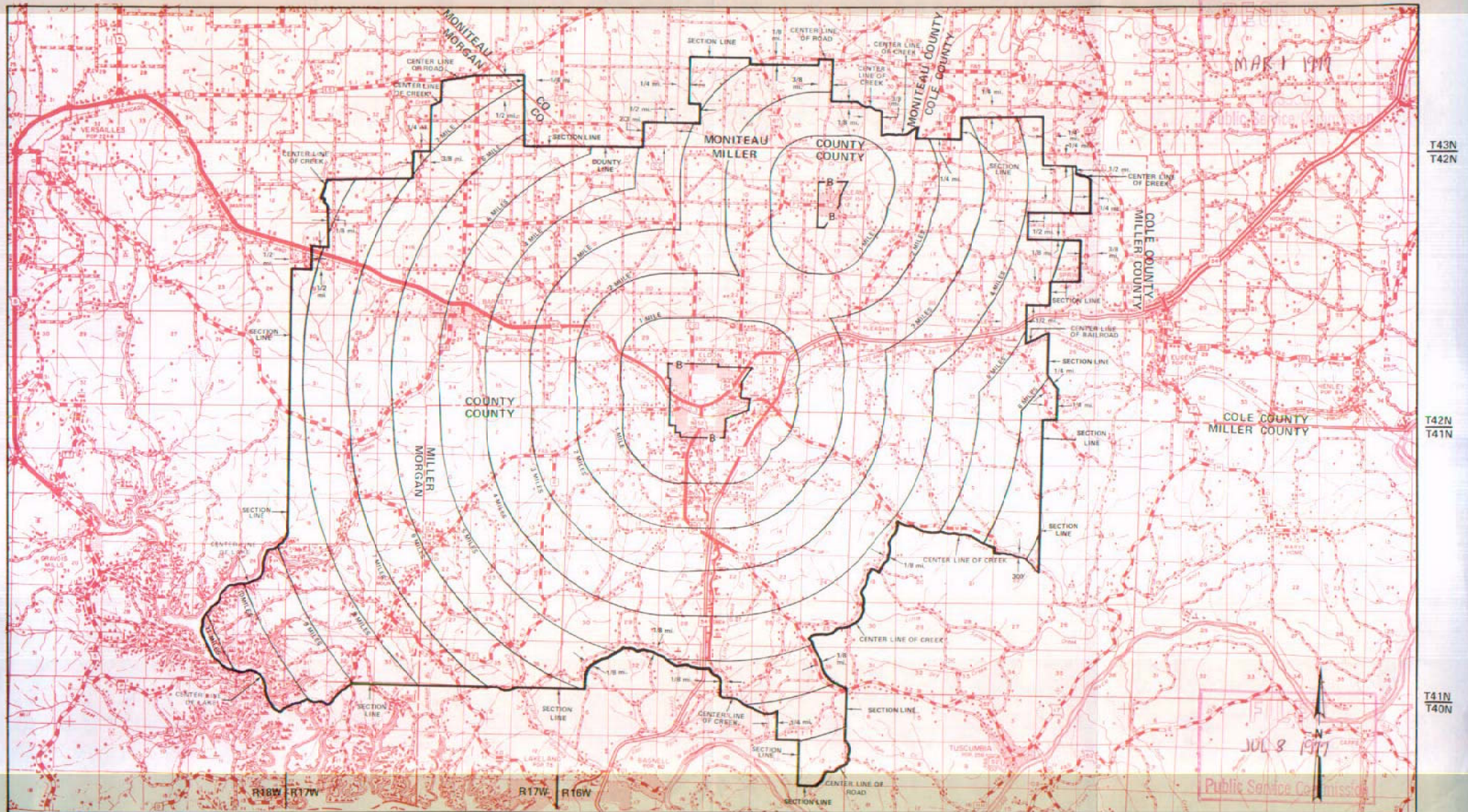
CANCELLED
June 29, 2007
TO-2002-185
Missouri Public
Service Commission

NO SUPPLEMENT TO THIS TARIFF WILL
BE ISSUED EXCEPT FOR THE PURPOSE OF
CANCELING THIS TARIFF.

P. S. C. Mo. No. 17
EXCHANGE AREA MAP

Eldon, Missouri

16th REVISED SHEET 3
REPLACING 15th REVISED SHEET 3



By R. R. SHOCKLEY, Vice President, Missouri
Southwestern Bell Telephone Company
St. Louis, Missouri

Issued: March 1, 1977

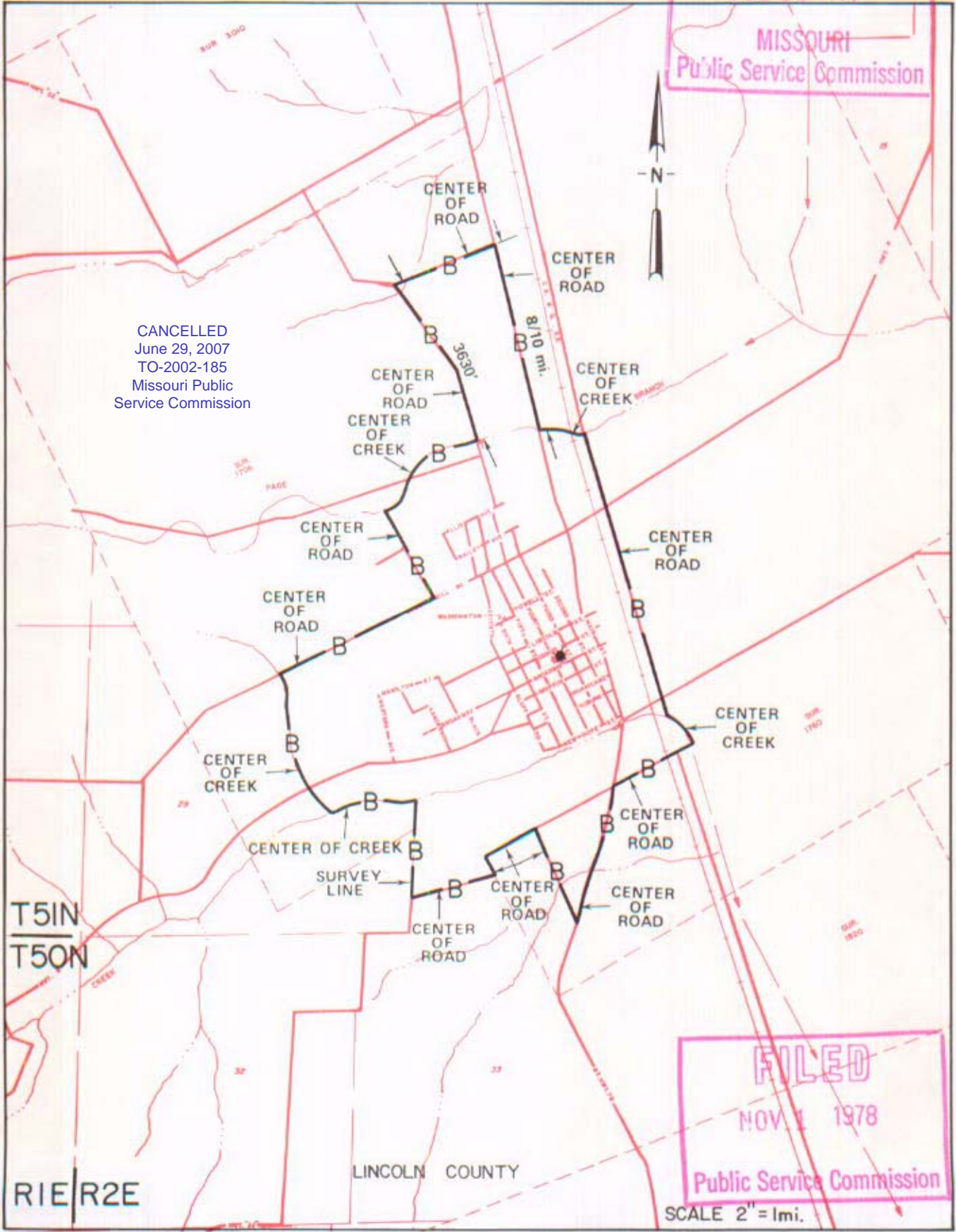
Effective: JUL 8 1977

NO SUPPLEMENT TO THIS TARIFF WILL BE ISSUED EXCEPT FOR THE PURPOSE OF CANCELING THIS TARIFF.

P. S. C. Mo. No. 17

BASE RATE AREA MAP

Elsberry, Missouri
RECEIVED
 1st REVISED SHEET 2
 REPLACING ORIGINAL SHEET 2
 JUL 11 1977
 MISSOURI
 Public Service Commission



CANCELLED
 June 29, 2007
 TO-2002-185
 Missouri Public
 Service Commission

FILED
 NOV 1 1978
 Public Service Commission

T51N
 T50N
 R1E R2E

LINCOLN COUNTY

SCALE 2" = 1mi.

By R. R. SHOCKLEY, Vice President, Missouri
 Southwestern Bell Telephone Company
 St. Louis, Missouri

NOV 1 - 1978

Issued: July 11, 1977

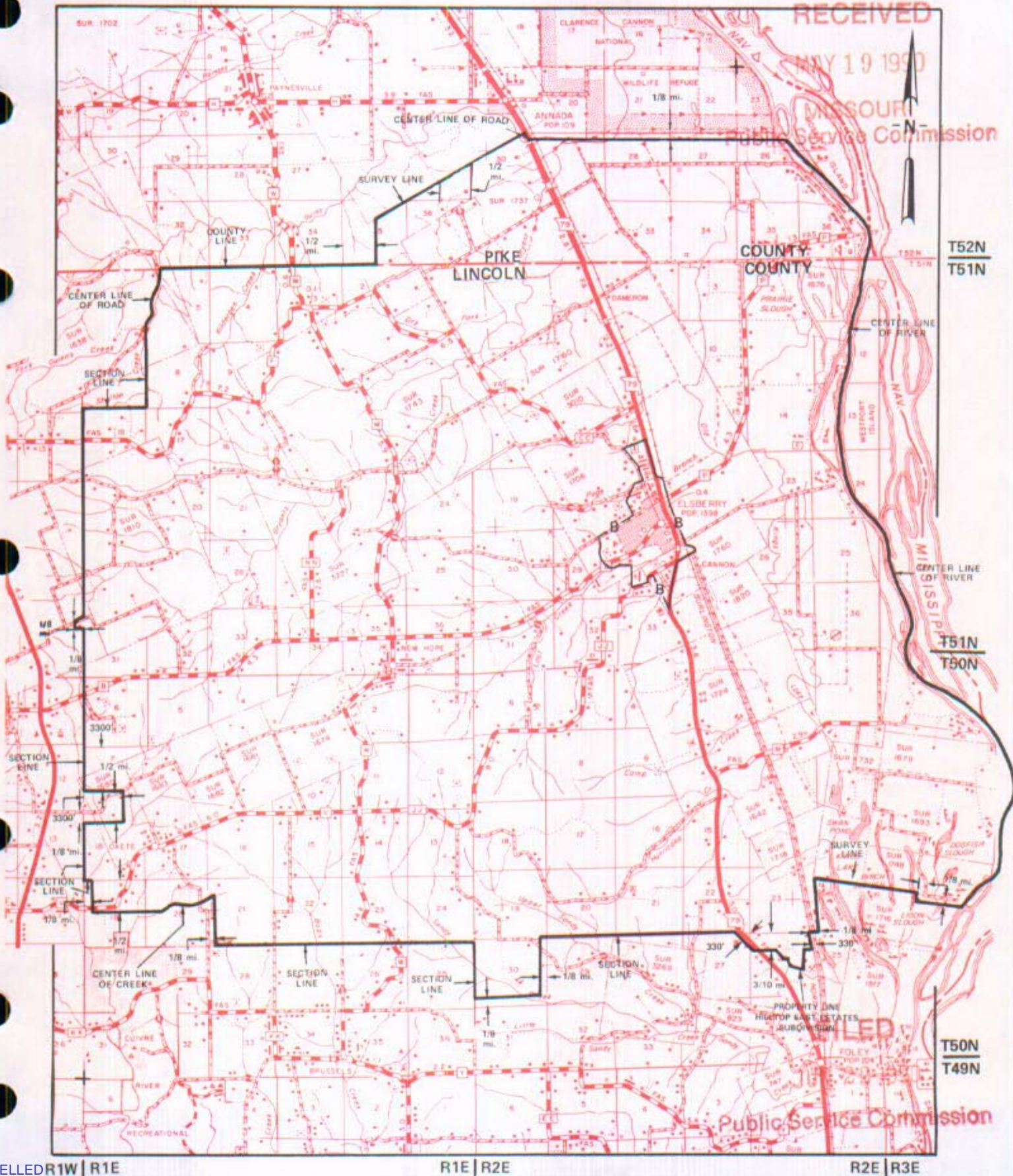
Effective: _____

NO SUPPLEMENT TO THIS TARIFF WILL BE ISSUED EXCEPT FOR THE PURPOSE OF CANCELING THIS TARIFF.

P. S. C. Mo. No. 17 EXCHANGE AREA MAP

Elsberry, Missouri

12th REVISED SHEET 3
REPLACING 11th REVISED SHEET 3



RECEIVED
MAY 19 1990
MISSOURI
Public Service Commission

T52N
T51N

T51N
T50N

T50N
T49N

FILED
Public Service Commission

CANCELLED
June 29, 2007
TO-2002-185
Missouri Public
Service Commission

ISSUED: MAY 2 1 1990

By R. D. BARRON, PRESIDENT, MISSOURI DIVISION
Southwestern Bell Telephone Company
St. Louis, Missouri

Effective: JUN 2 2 1990

No supplement to this tariff will be issued except for the purpose of canceling this tariff.

P. S. C. Mo.—No. 17

EOLIA, MISSOURI
FIFTH REVISED SHEET 1
(REPLACING FOURTH REVISED SHEET 1,
ORIGINAL SHEET 1-A
AND ORIGINAL SHEET 1-B)

SOUTHWESTERN BELL TELEPHONE COMPANY

LOCAL EXCHANGE TARIFF
SUPERSEDING ALL TARIFFS PREVIOUSLY ISSUED

RECEIVED
AUG 22 1940
MISSOURI
Public Service Comm.

This exchange was sold to Mr. J. R. Carter, effective May 25, 1939, and, therefore, all rates and rate practices formerly authorized for this exchange are withdrawn.

Eolia Tel. Exch.

FILED

SEP 19 1940

Public Service Commission.

Issued: August 21, 1940

Effective: May 25, 1939

By S. R. SMITH, General Manager
St. Louis, Mo.

P. S. C. Mo. No. 17
BASE RATE AREA MAP

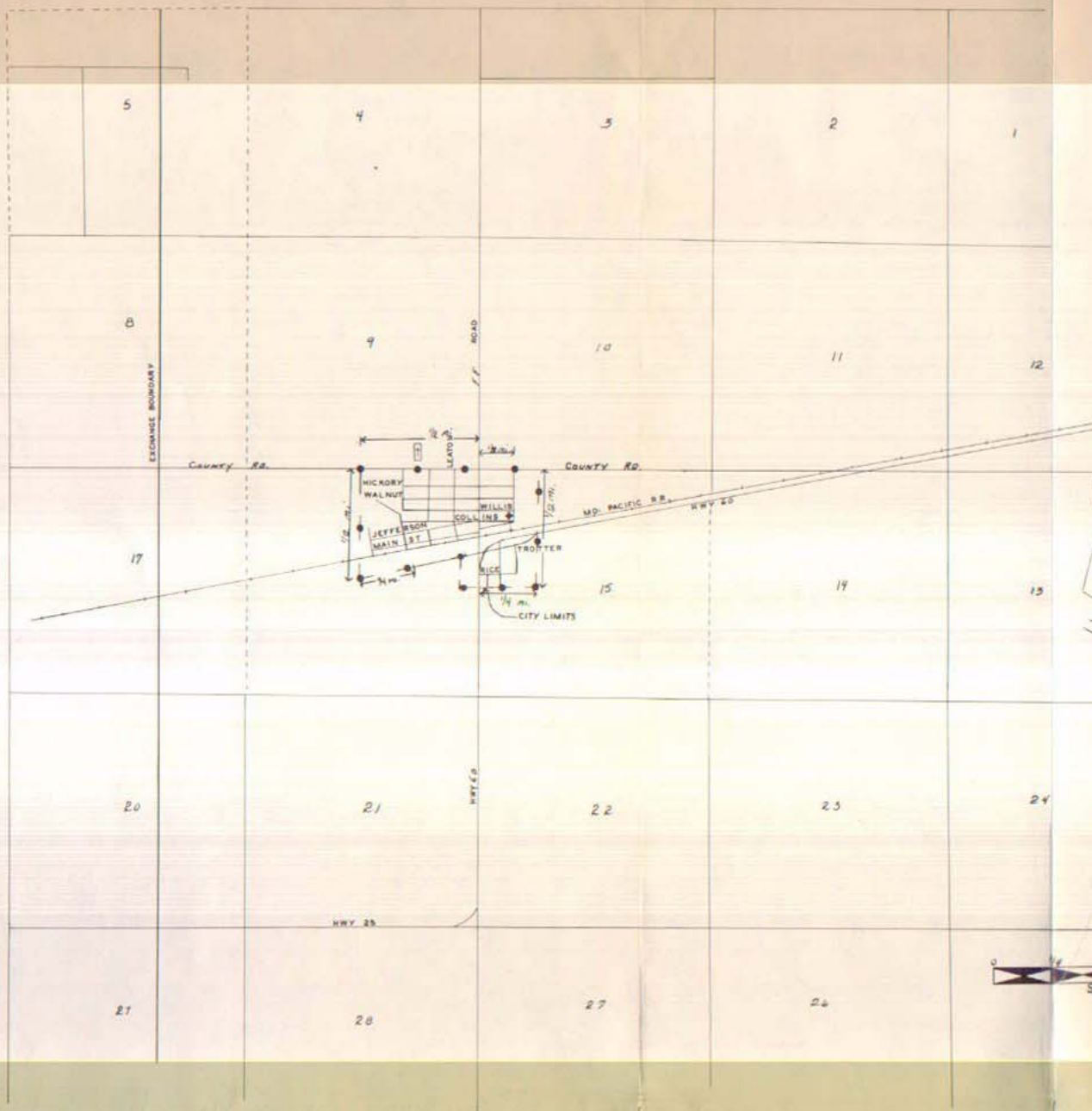
RECEIVED
APR 4 1956
MISSOURI
Public Service Comm.

FILED

MAY 5 1956

PUBLIC SERVICE COMMISSION

ESSEX, MO.



CANCELLED
June 29, 2007
TO-2002-185
Missouri Public
Service Commission



| | |
|------------------------|-----|
| CODE | |
| BELL CENTRAL OFFICE: | ◆ |
| BASE RATE AREA LIMITS: | ◆◆◆ |

NO SUPPLEMENT TO THIS TARIFF WILL BE ISSUED EXCEPT FOR THE PURPOSE OF CANCELING THIS TARIFF.

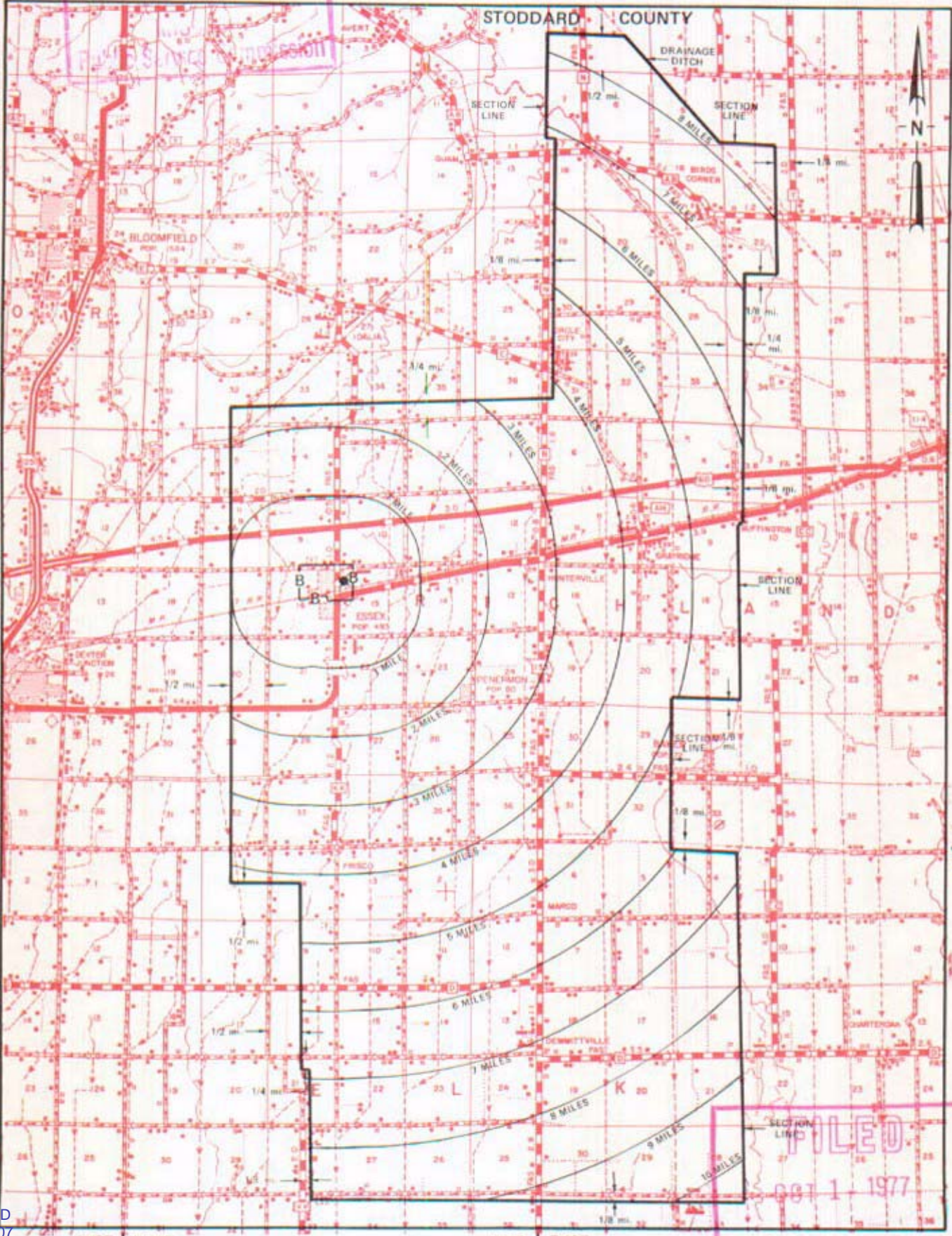
P. S. C. Mo. No. 17

Essex, Missouri

EXCHANGE AREA MAP

3rd REVISED SHEET 3 REPLACING 2nd REVISED SHEET 3

APR 14 1977



T26N
T25N

T25N
T24N

R10E | R11E

R11E | R12E

FILED
 OCT 1 1977
 Public Service Commission

By R. R. SHOCKLEY, Vice President, Missouri
 Southwestern Bell Telephone Company
 St. Louis, Missouri

Issued: April 15, 1977

Effective: OCT 1 1977

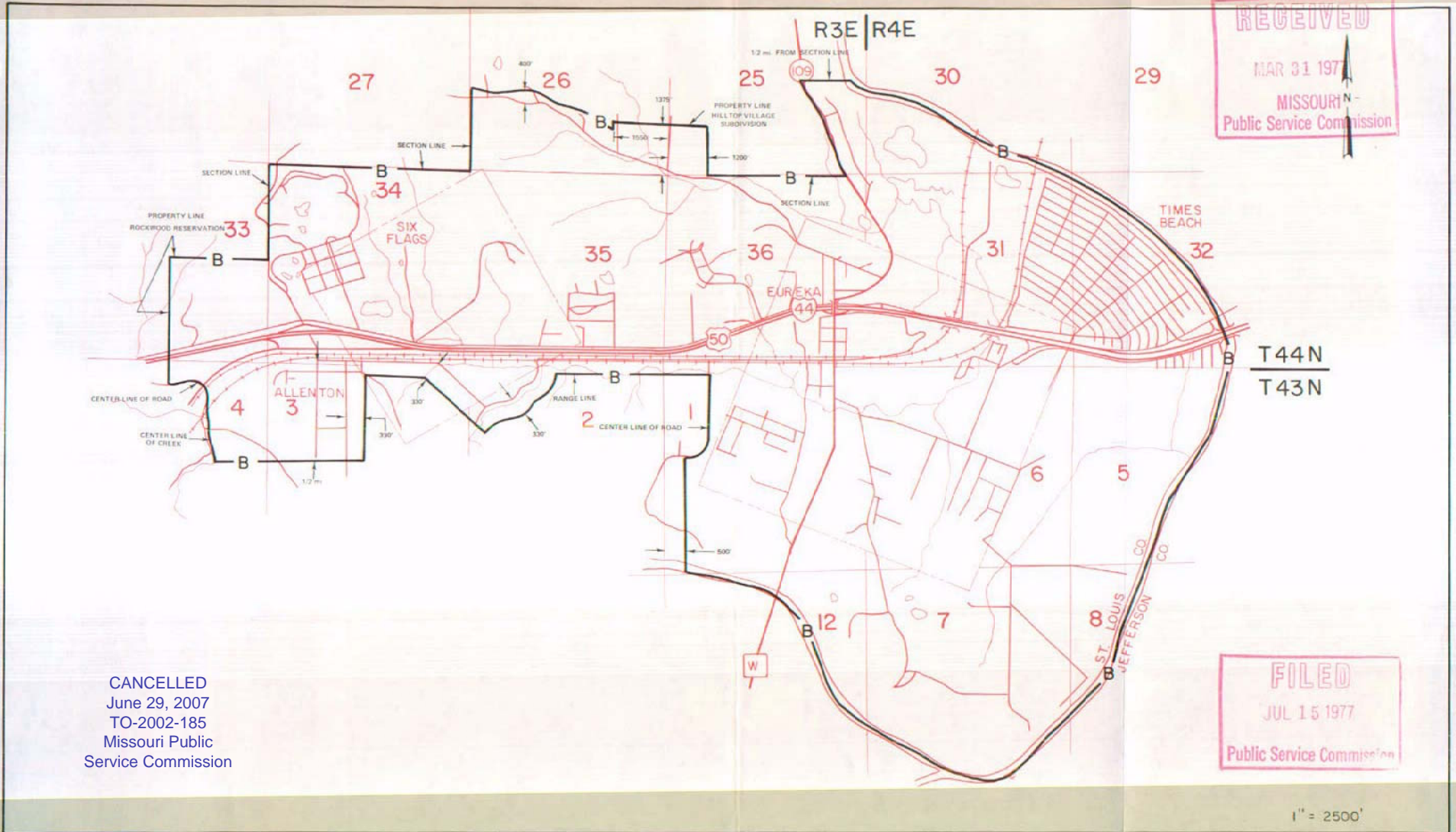
CANCELLED
 June 29, 2007
 TO-2002-185
 Missouri Public
 Service Commission

NO SUPPLEMENT TO THIS TARIFF WILL BE ISSUED EXCEPT FOR THE PURPOSE OF CANCELING THIS TARIFF.

P. S. C. Mo. No. 17
BASE RATE AREA MAP

Eureka, Missouri

6th REVISED SHEET 3
REPLACING 5th REVISED SHEET 2



RECEIVED
MAR 31 1977
MISSOURI
Public Service Commission

FILED
JUL 15 1977
Public Service Commission

CANCELLED
June 29, 2007
TO-2002-185
Missouri Public
Service Commission

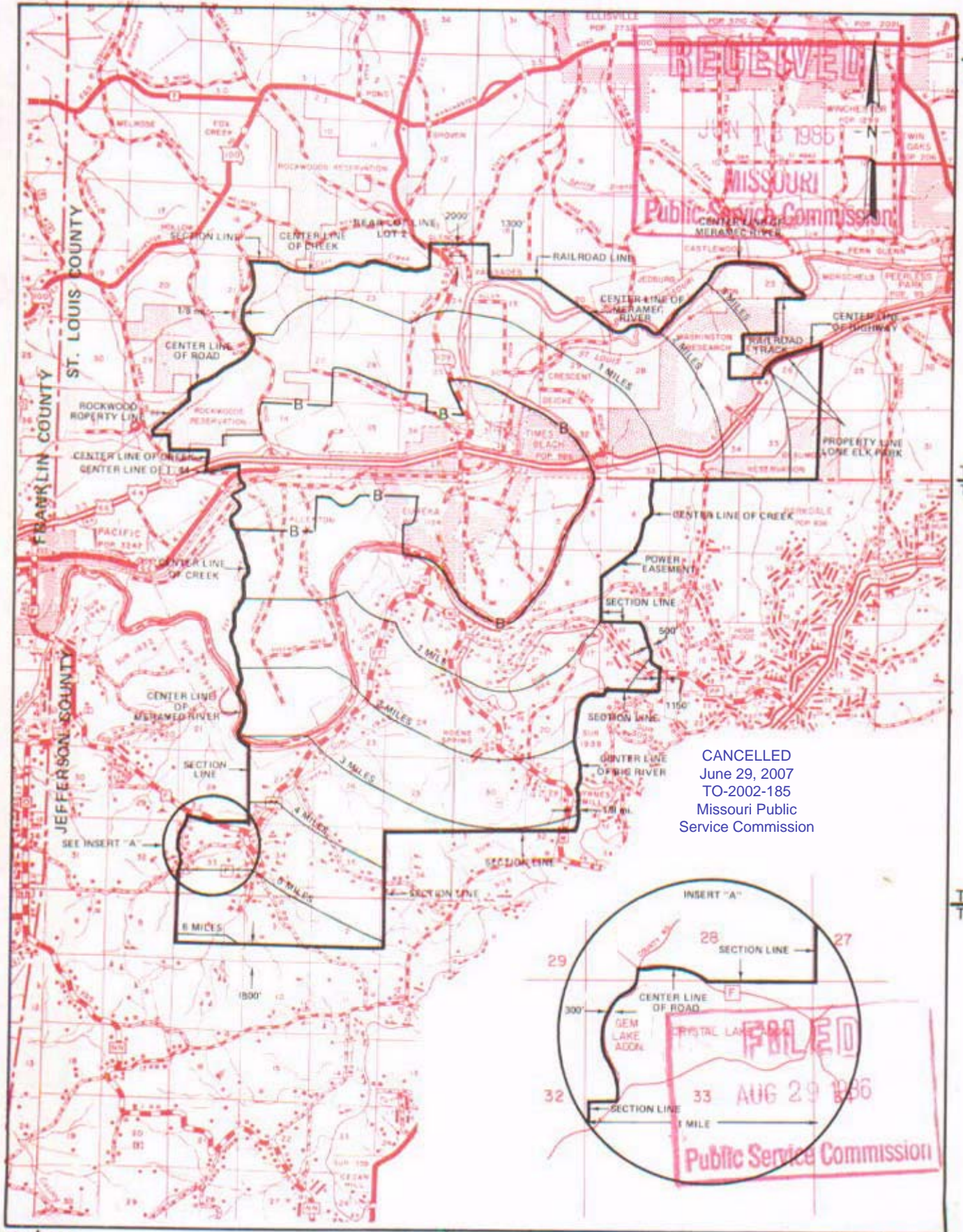
APR 4 1977
Issued: _____

By R. R. SHOCKLEY, Vice President, Missouri
Southwestern Bell Telephone
St. Louis, Missouri

JUL 15 1977
Effective: _____

EXCHANGE AREA MAP

16th REVISED SHEET 3 REPLACING 15th REVISED SHEET 3



CANCELLED
 June 29, 2007
 TO-2002-185
 Missouri Public
 Service Commission

T45N
T44N

T44N
T43N

T43N
T42N

R2E | R3E

R3E | R4E

R4E | R5E

By R. D. BARRON, President, Missouri Division
 Southwestern Bell Telephone Company
 St. Louis, Missouri

Issued: JUNE 27, 1986

Effective: AUGUST 29, 1986

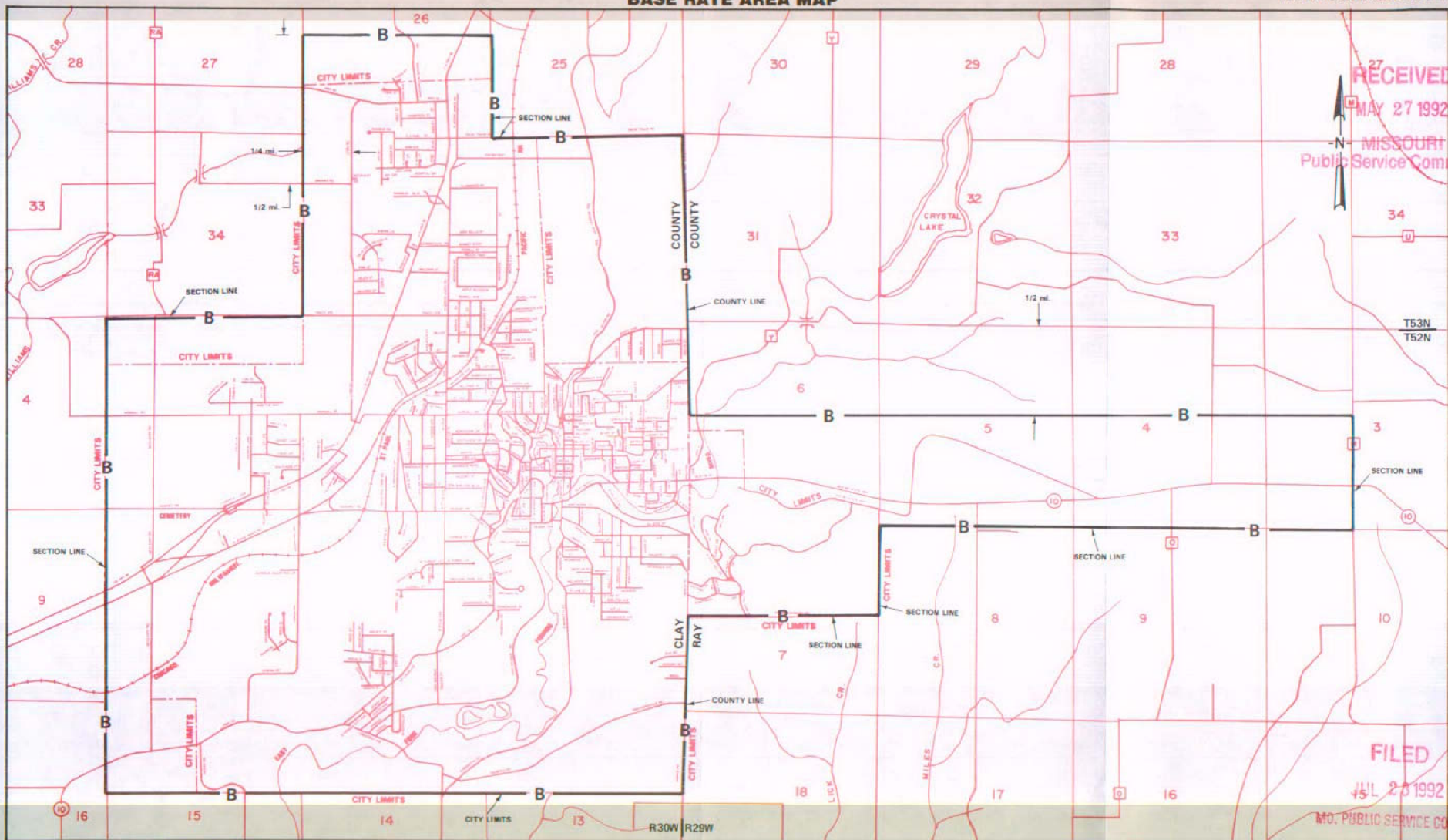
CANCELLED
June 29, 2007
TO-2002-185
Missouri Public
Service Commission

P. S. C. Mo. No. 17
BASE RATE AREA MAP

Excelsior Springs, Missouri

4th REVISED SHEET 2
REPLACING 3rd REVISED SHEET 2

NO SUPPLEMENT TO THIS TARIFF WILL
BE ISSUED EXCEPT FOR THE PURPOSE OF
CANCELING THIS TARIFF.



RECEIVED
MAY 27 1992
MISSOURI
Public Service Commission

FILED

JUL 23 1992

MO. PUBLIC SERVICE COMM.

By R. D. BARRON, PRESIDENT, MISSOURI DIVISION
Southwestern Bell Telephone Company
St. Louis, Missouri

Issued: JUN 02 1992

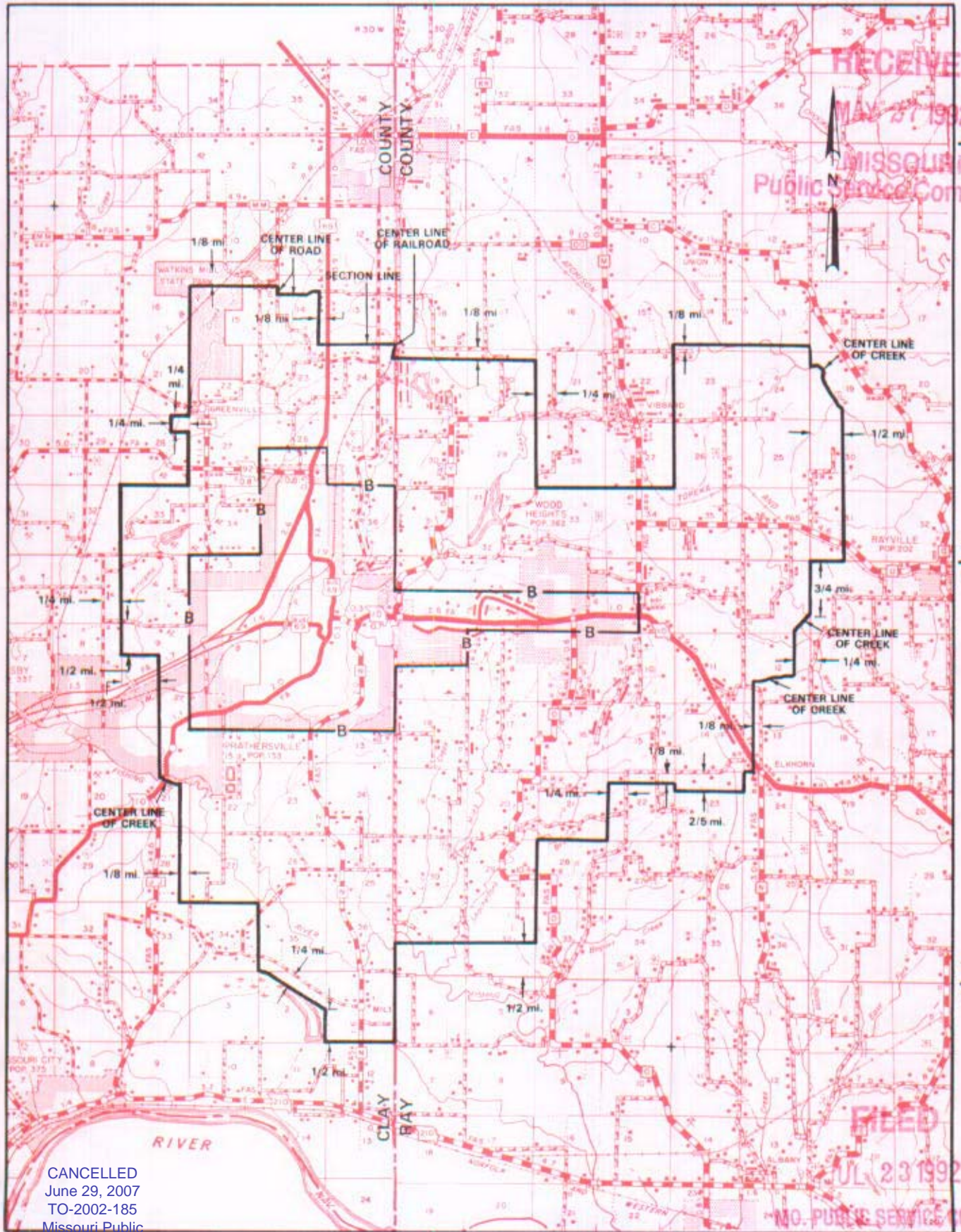
Effective: JUL 23 1992

NO SUPPLEMENT TO THIS TARIFF WILL BE ISSUED EXCEPT FOR THE PURPOSE OF CANCELING THIS TARIFF.

Excelsior Springs, Missouri

P. S. C. Mo. No. 17 EXCHANGE AREA MAP

7th REVISED SHEET 3
REPLACING 6th REVISED SHEET 3



RECEIVED

MAY 27 1992

MISSOURI
Public Service Commission

FILED

JUL 23 1992

MO. PUBLIC SERVICE COMM.

CANCELLED
June 29, 2007
TO-2002-185
Missouri Public

Service Commission

R30W | R29W

R29W | R28W

By R. D. BARRON, PRESIDENT, MISSOURI DIVISION
Southwestern Bell Telephone Company
St. Louis, Missouri

Issued: JUN 02 1992

Effective: JUL 23 1992