

SBC PSC MO #17

Gideon, Missouri

Original Sheet 2

Replacing Gideon, 1st Revised Sheet 1-A

And Clarkton, 1st Revised Sheet 1-A

Non-Scannable Map

(Is viewable in the Data Center
200 Madison Street, 1st Floor
Jefferson City MO)

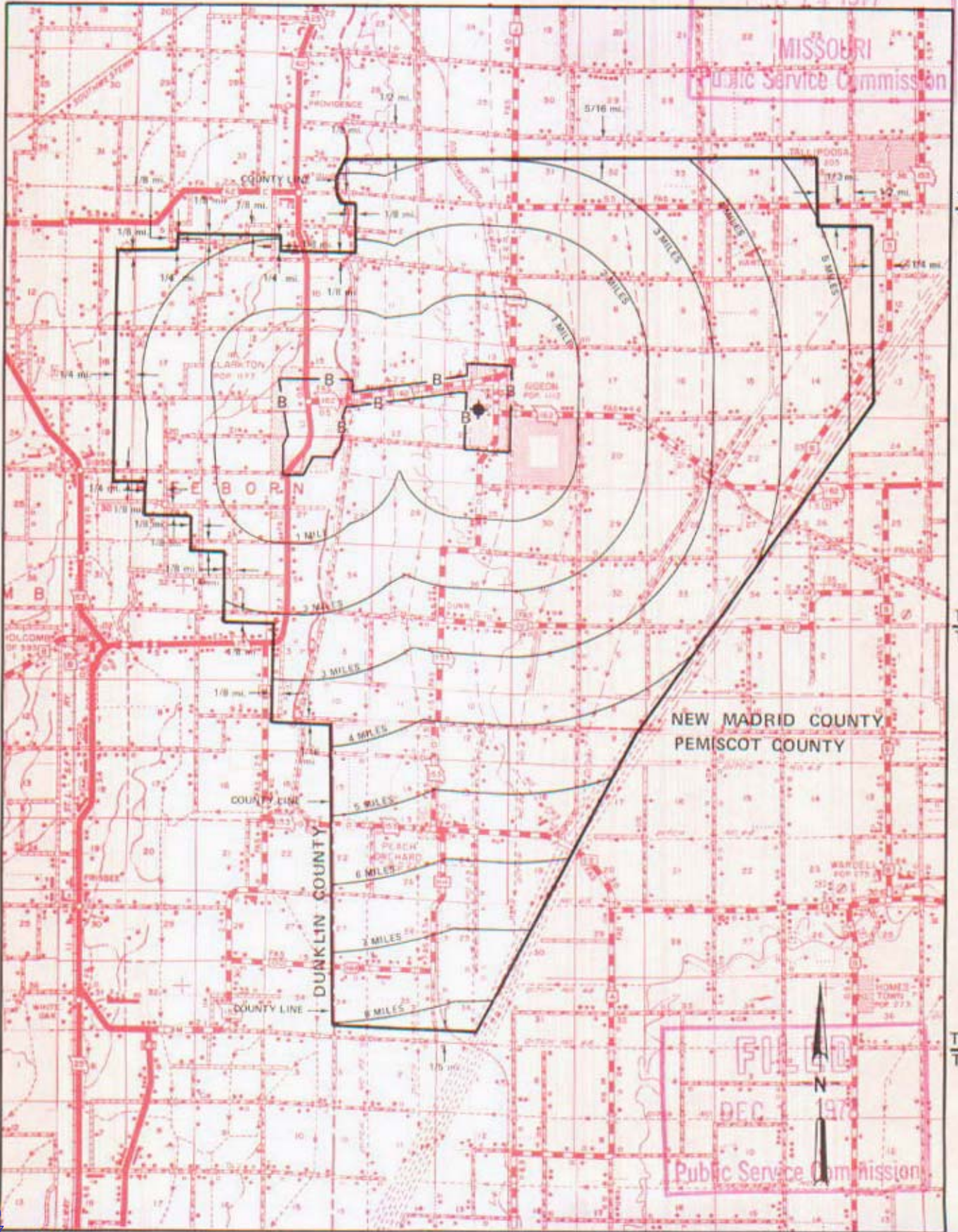
NO SUPPLEMENT TO THIS TARIFF WILL BE ISSUED EXCEPT FOR THE PURPOSE OF CANCELING THIS TARIFF.

P. S. C. Mo. No. 17
EXCHANGE AREA MAP

Gideon, Missouri
RECEIVED
6th REVISED SHEET 3
REPLACING 5th REVISED SHEET 3

FEB 14 1977

MISSOURI
Public Service Commission



T23N
T22N

T22N
T21N

T21N
T20N

NEW MADRID COUNTY
PEMISCOT COUNTY

FILED
DEC 1 1978
Public Service Commission

R9E | R10E

R10E | R11E

R11E | R12E

By R. R. SHOCKLEY, Vice President, Missouri
Southwestern Bell Telephone Company
St. Louis, Missouri

Issued: February 15, 1977

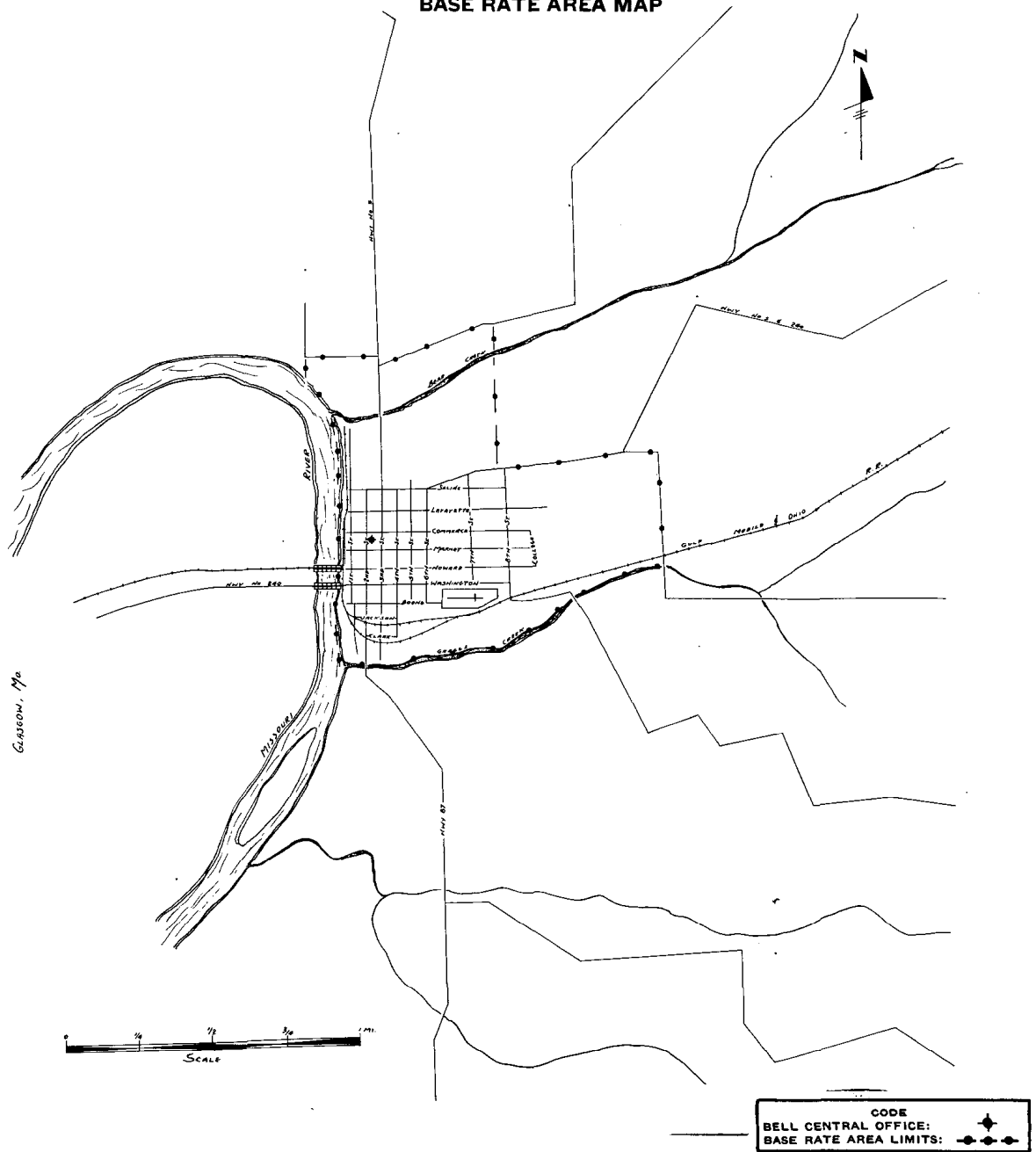
Effective: DEC 1 1978

CANCELLED
June 29, 2007
TO-2002-185
Missouri Public
Service Commission

NO SUPPLEMENT TO THIS TARIFF WILL
BE ISSUED EXCEPT FOR THE PURPOSE OF
CANCELING THIS TARIFF.

Glasgow, Missouri
ORIGINAL SHEET 2
REPLACING ORIGINAL SHEET 1-A

P. S. C.-Mo. No. 17
BASE RATE AREA MAP



Issued: June 27, 1950

Effective: July 6, 1950

By H. R. TOWLES, General Manager
Southwestern Bell Telephone Company
St. Louis, Missouri

NO SUPPLEMENT TO THIS TARIFF WILL BE ISSUED EXCEPT FOR THE PURPOSE OF CANCELING THIS TARIFF.

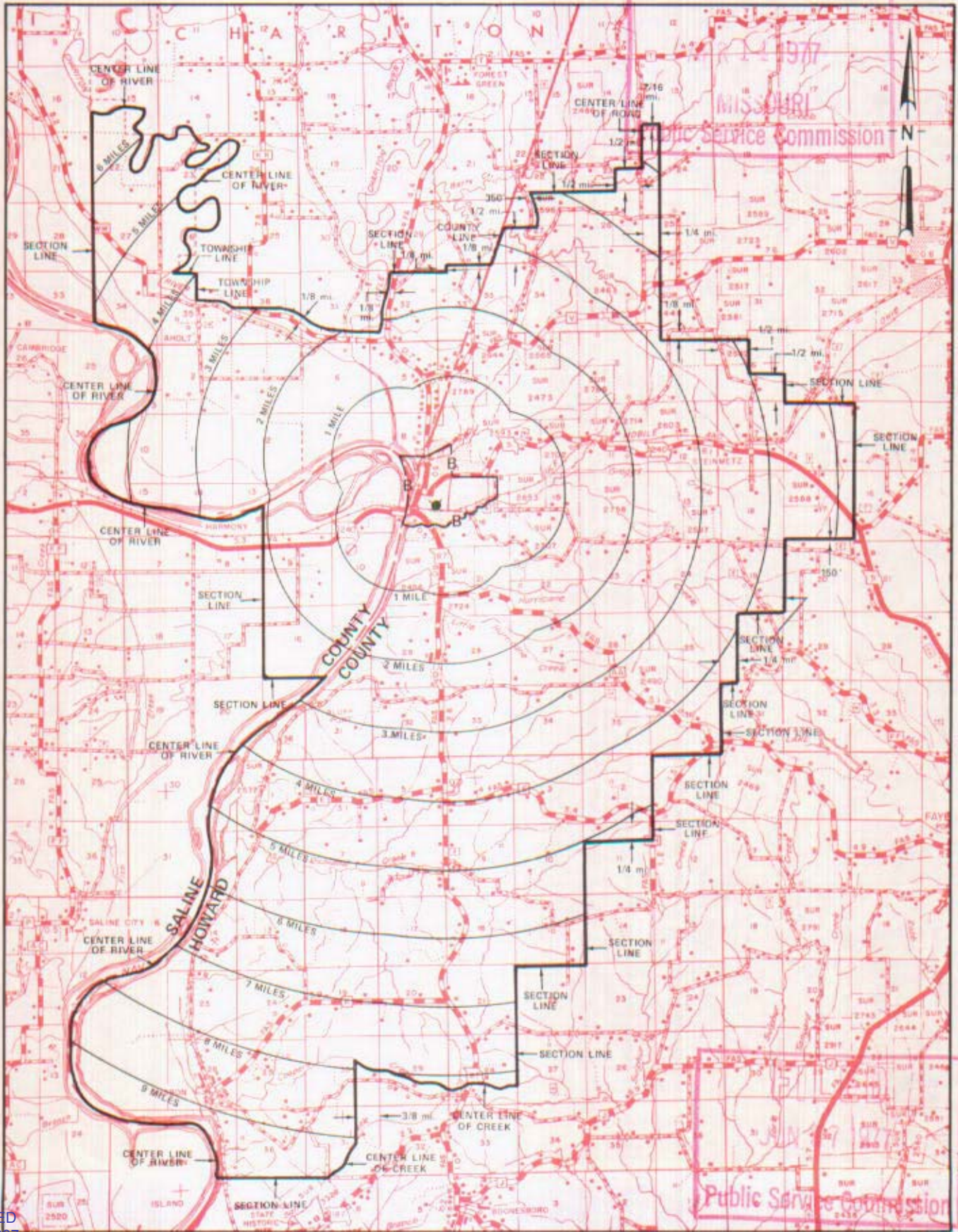
P. S. C. Mo. No. 17

Glasgow, Missouri

EXCHANGE AREA MAP

6th REVISED SHEET 3 REPLACING 5th REVISED SHEET 3

RECEIVED



T52N
T51N

T51N
T50N

T50N
T49N

R18W | R17W

R17W | R16W

By R. R. SHOCKLEY, Vice President, Missouri Southwestern Bell Telephone Company

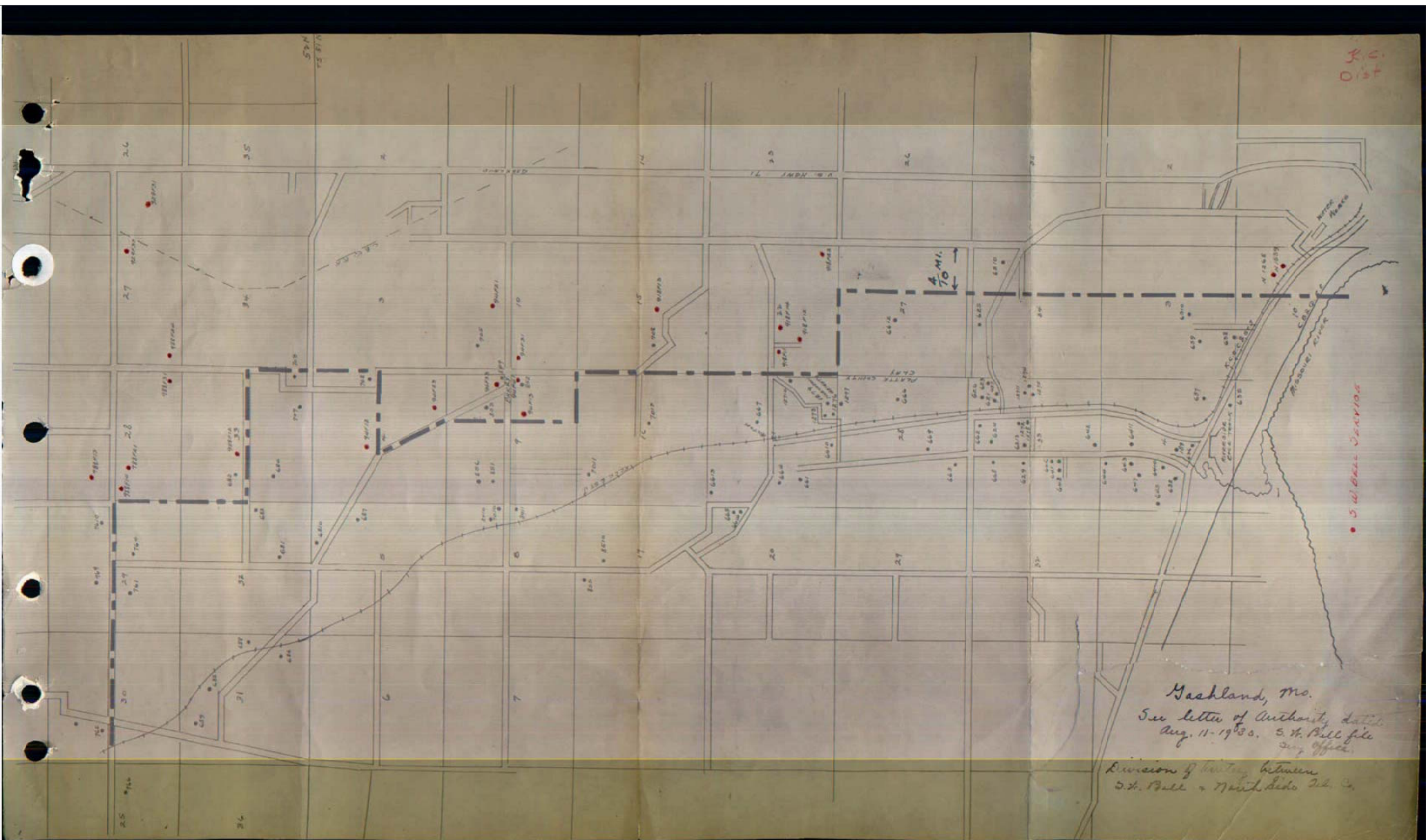
St. Louis, Missouri

Issued: April 11, 1977

Effective: June 27, 1977

CANCELLED
June 29, 2007
TO-2002-185
Missouri Public
Service Commission

CANCELLED
June 29, 2007
TO-2002-185
Missouri Public
Service Commission

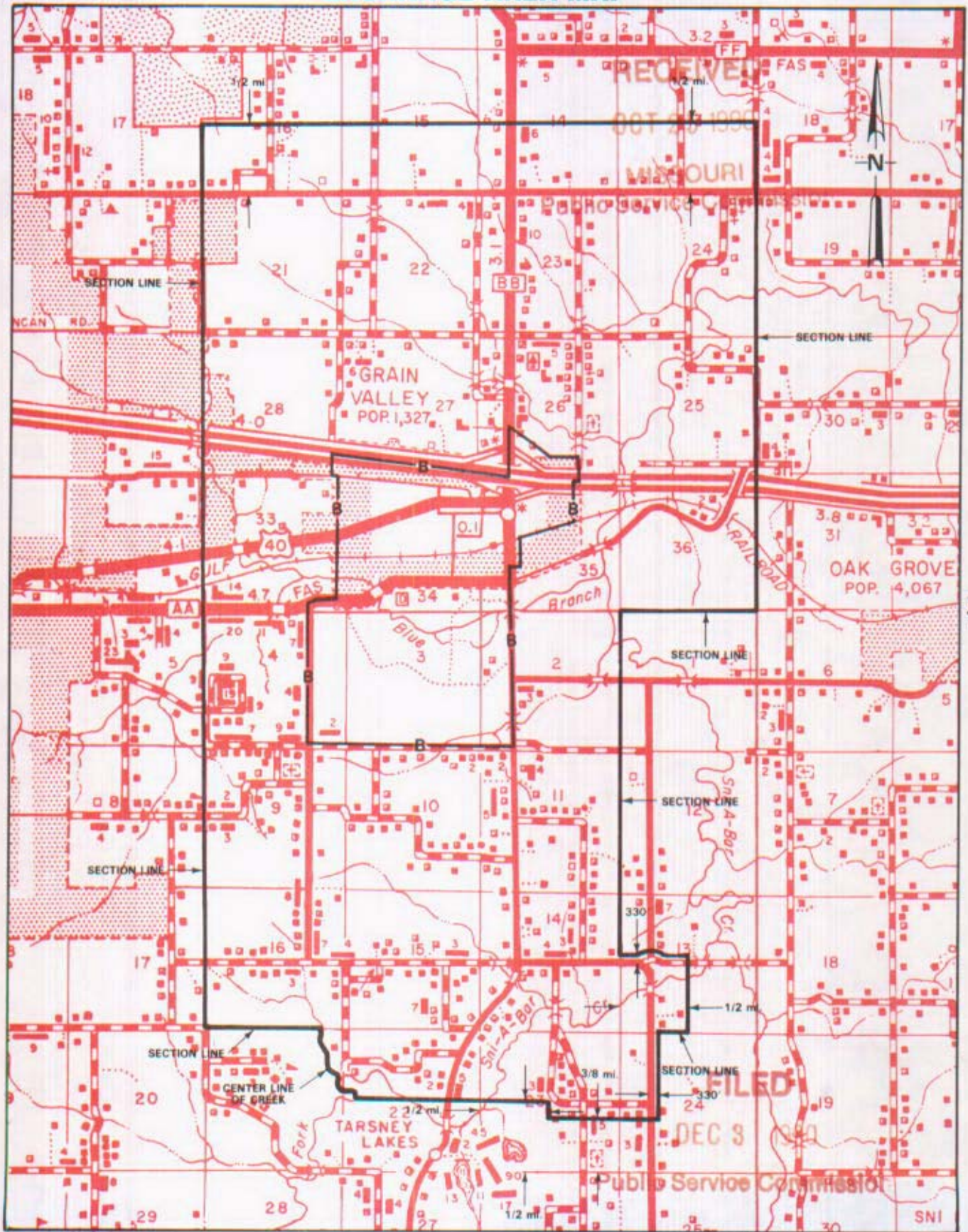


NO SUPPLEMENT TO THIS TARIFF WILL BE ISSUED EXCEPT FOR THE PURPOSE OF CANCELING THIS TARIFF.

Grain Valley, Missouri

6th REVISED SHEET 3
REPLACING 5th REVISED SHEET 3

P. S. C. Mo. No. 17 EXCHANGE AREA MAP



T49N
T48N

CANCELLED
June 29, 2007
TO-2002-185
Missouri Public
Service Commission

NOV 0 1 1990

By R. D. BARRON, PRESIDENT, MISSOURI DIVISION
Southwestern Bell Telephone Company
St. Louis, Missouri

R30W | R29W

DEC 0 3 1990

Effective:

CANCELLED
June 29, 2007
TO-2002-185
Missouri Public
Service Commission

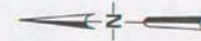
NO SUPPLEMENT TO THIS TARIFF WILL
BE ISSUED EXCEPT FOR THE PURPOSE OF
CANCELING THIS TARIFF.

P. S. C. Mo. No. 17
BASE RATE AREA MAP

Grain Valley, Missouri

2nd REVISED SHEET 2
REPLACING 1st REVISED SHEET 2

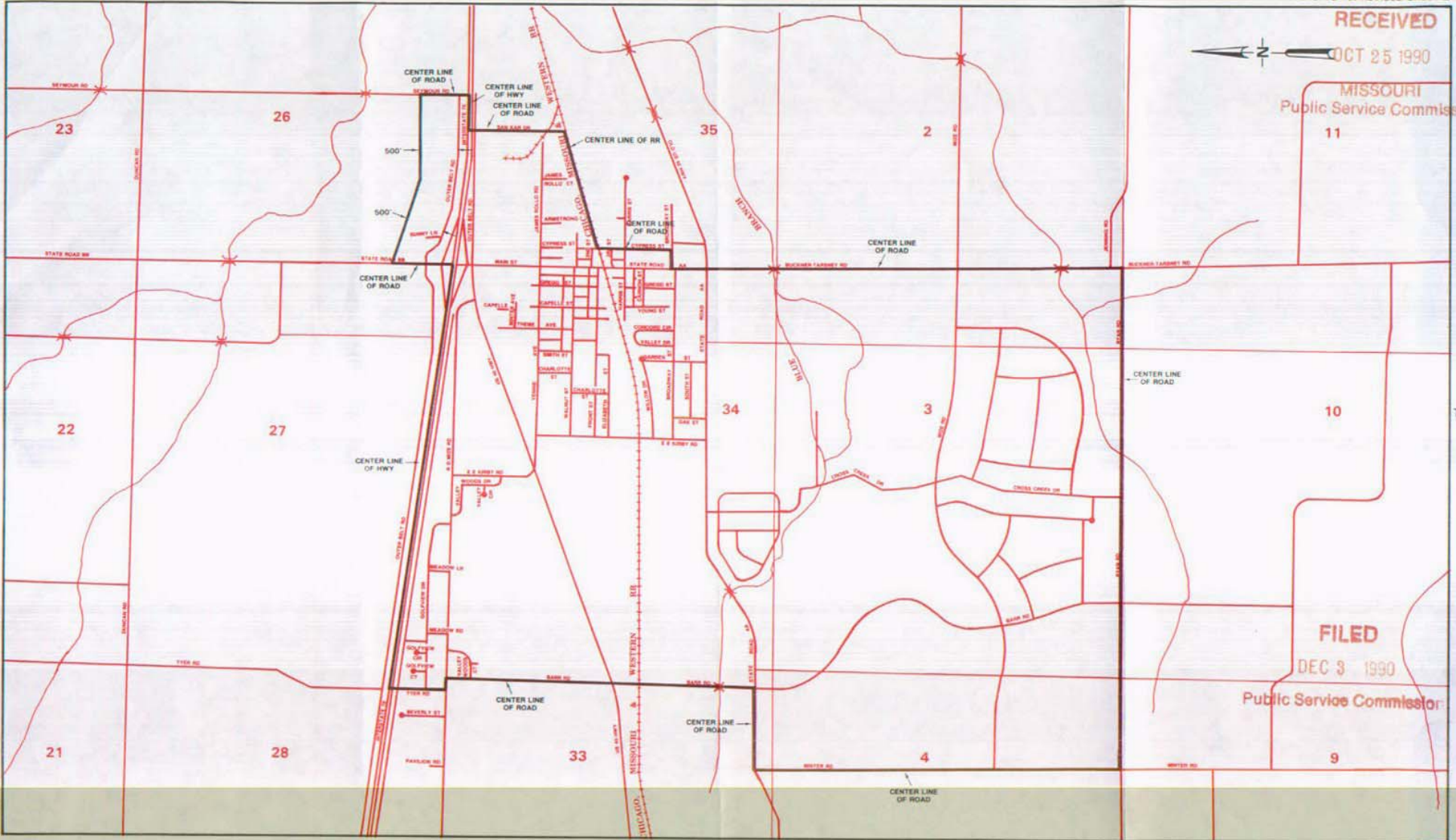
RECEIVED



OCT 25 1990

MISSOURI
Public Service Commission

11



T49N

FILED

DEC 3 1990

Public Service Commission

9

NOV 0 1 1990

Issued: _____

R30W | R29W
By R. D. BARRON, PRESIDENT, MISSOURI DIVISION
Southwestern Bell Telephone Company
St. Louis, Missouri

Effective: DEC 0 3 1990

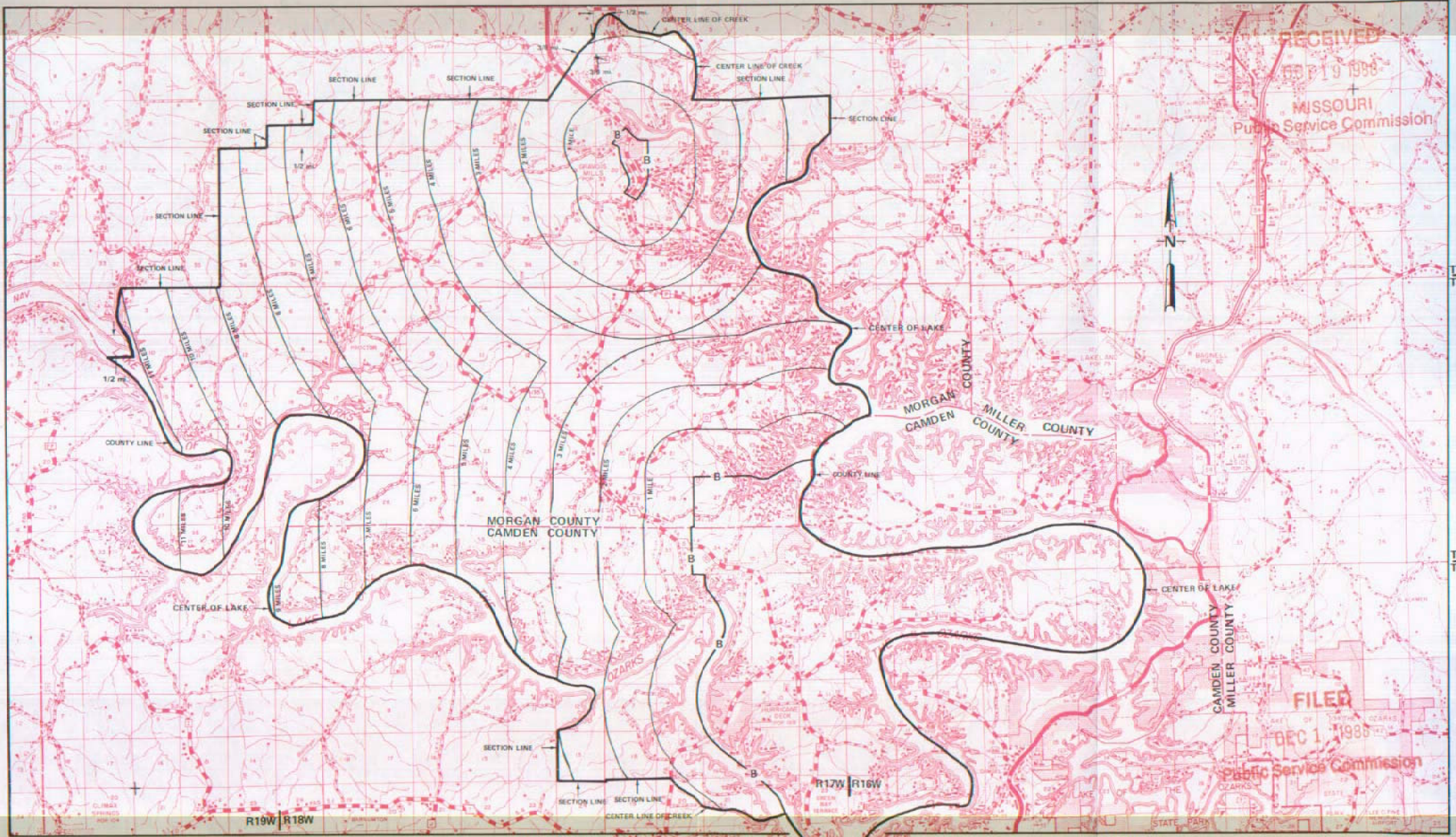
CANCELLED
June 29, 2007
TO-2002-185
Missouri Public
Service Commission

P. S. C. Mo. No. 17
**EXCHANGE & BASE RATE
AREA MAP**

Gravois Mills, Missouri

6th REVISED SHEET 3
REPLACING 5th REVISED SHEET 3

NO SUPPLEMENT TO THIS TARIFF WILL
BE ISSUED EXCEPT FOR THE PURPOSE OF
CANCELING THIS TARIFF.



By R. D. BARRON, President, Missouri Division
Southwestern Bell Telephone Company
St. Louis, Missouri

Issued: November 1, 1988

Effective: December 1, 1988

NO SUPPLEMENT TO THIS TARIFF WILL BE ISSUED EXCEPT FOR THE PURPOSE OF CANCELING THIS TARIFF.

P. S. C. Mo. No. 17

BASE RATE AREA MAP

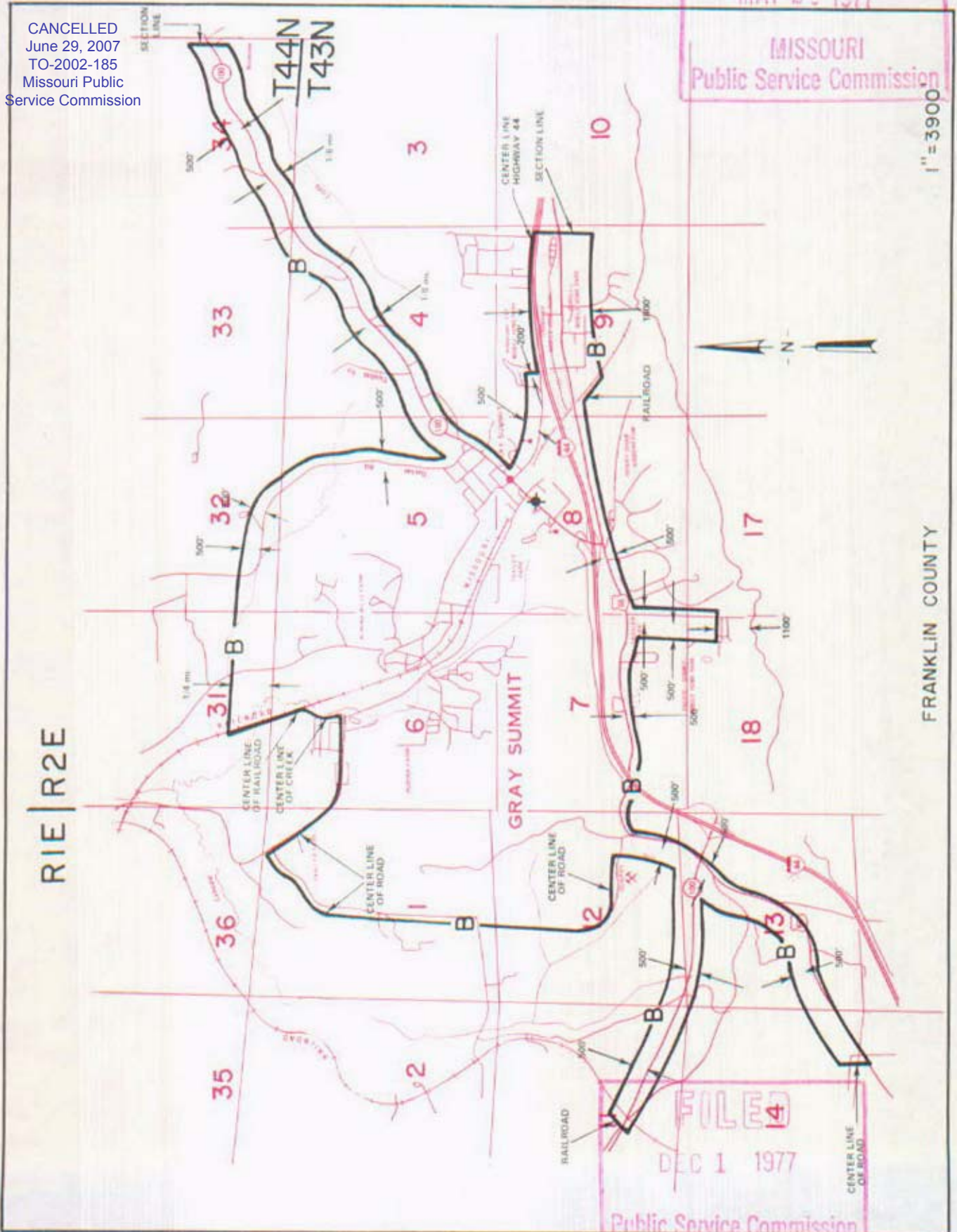
Gray Summit, Missouri
RECEIVED
4th REVISED SHEET 2
REPLACING 3rd REVISED SHEET 2

MAY 20 1977

MISSOURI
Public Service Commission

1" = 3900'

CANCELLED
June 29, 2007
TO-2002-185
Missouri Public
Service Commission



FILED
14
DEC 1 1977
Public Service Commission

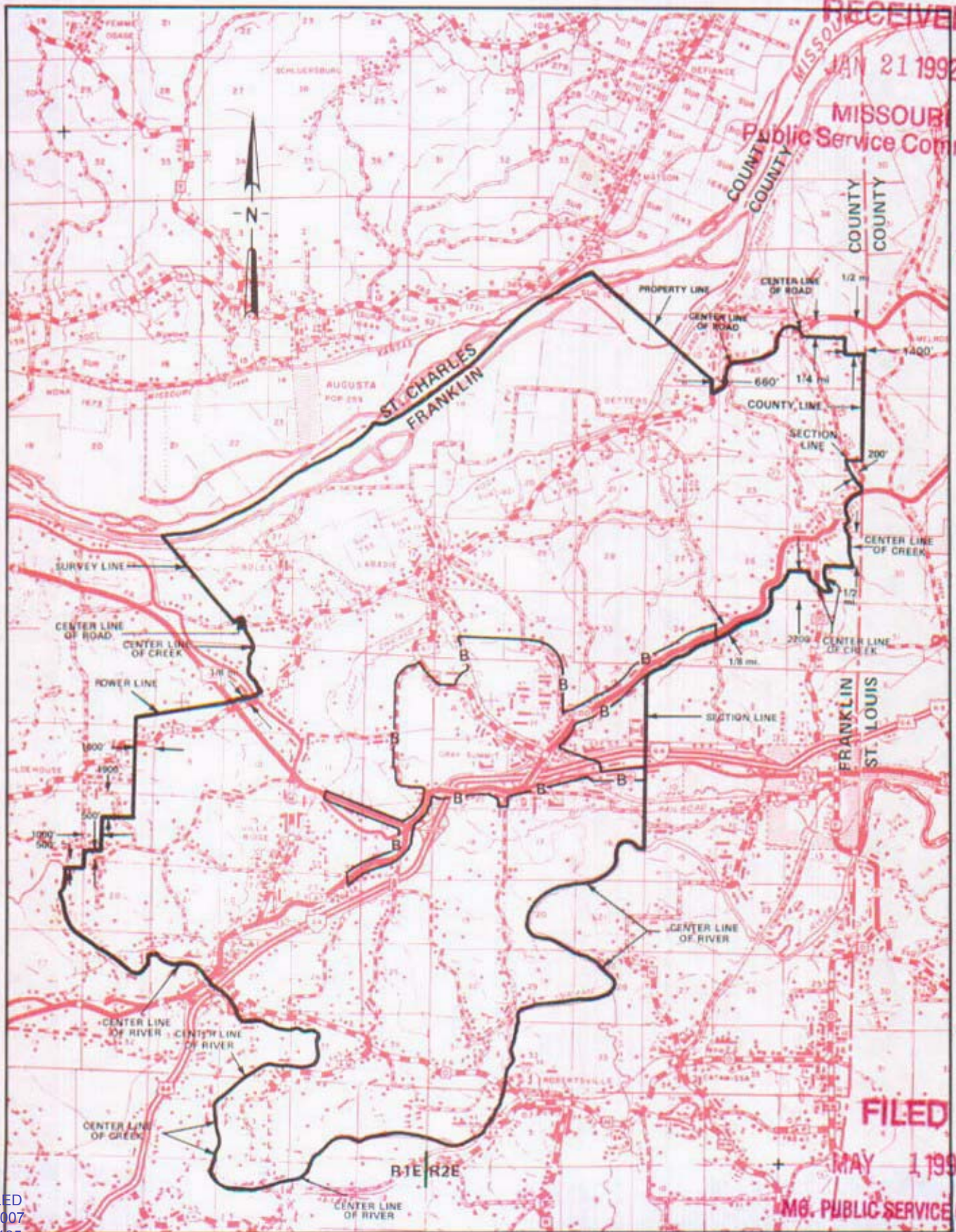
NO SUPPLEMENT TO THIS TARIFF WILL BE ISSUED EXCEPT FOR THE PURPOSE OF CANCELING THIS TARIFF.

P. S. C. Mo. No. 17

Gray Summit, Missouri

EXCHANGE AREA MAP

11th REVISED SHEET 3
REPLACING 10th REVISED SHEET 3



CANCELLED
June 29, 2007
TO-2002-165
Missouri Public
Service Commission

JAN 23 1992

By R. D. BARRON, President, Missouri Division
Southwestern Bell Telephone Company

R2E | R3E
MAY 01 1992

FILED
MAY 1 1992
MO. PUBLIC SERVICE COMM.

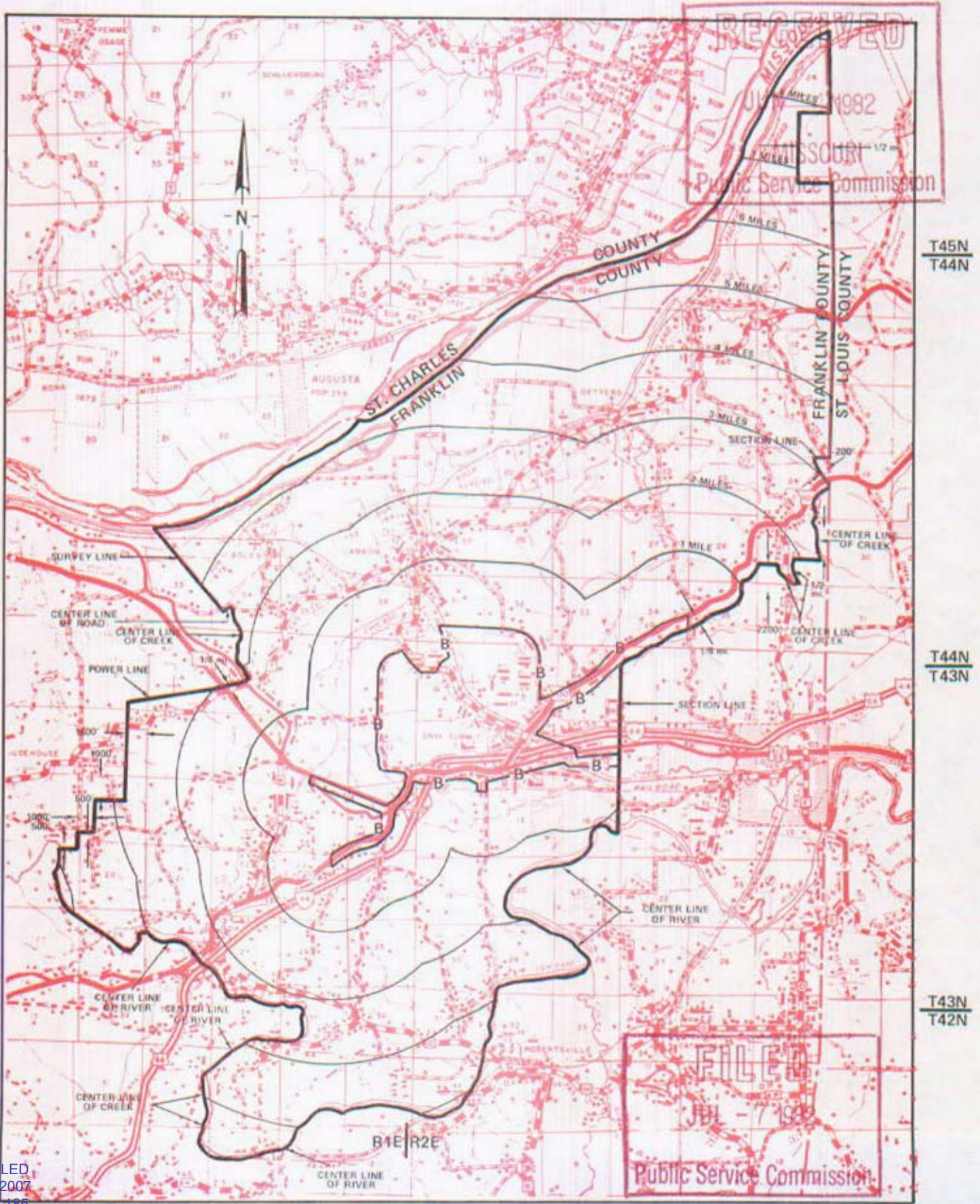
NO SUPPLEMENT TO THIS TARIFF WILL BE ISSUED EXCEPT FOR THE PURPOSE OF CANCELING THIS TARIFF.

P. S. C. Mo. No. 17

Gray Summit, Missouri

EXCHANGE AREA MAP

10th REVISED SHEET 3
REPLACING 9th REVISED SHEET 3



CANCELLED
June 29, 2007
TO-2002-185
Missouri Public
Service Commission

By R. D. BARRON, Vice President, Missouri
Southwestern Bell Telephone Company

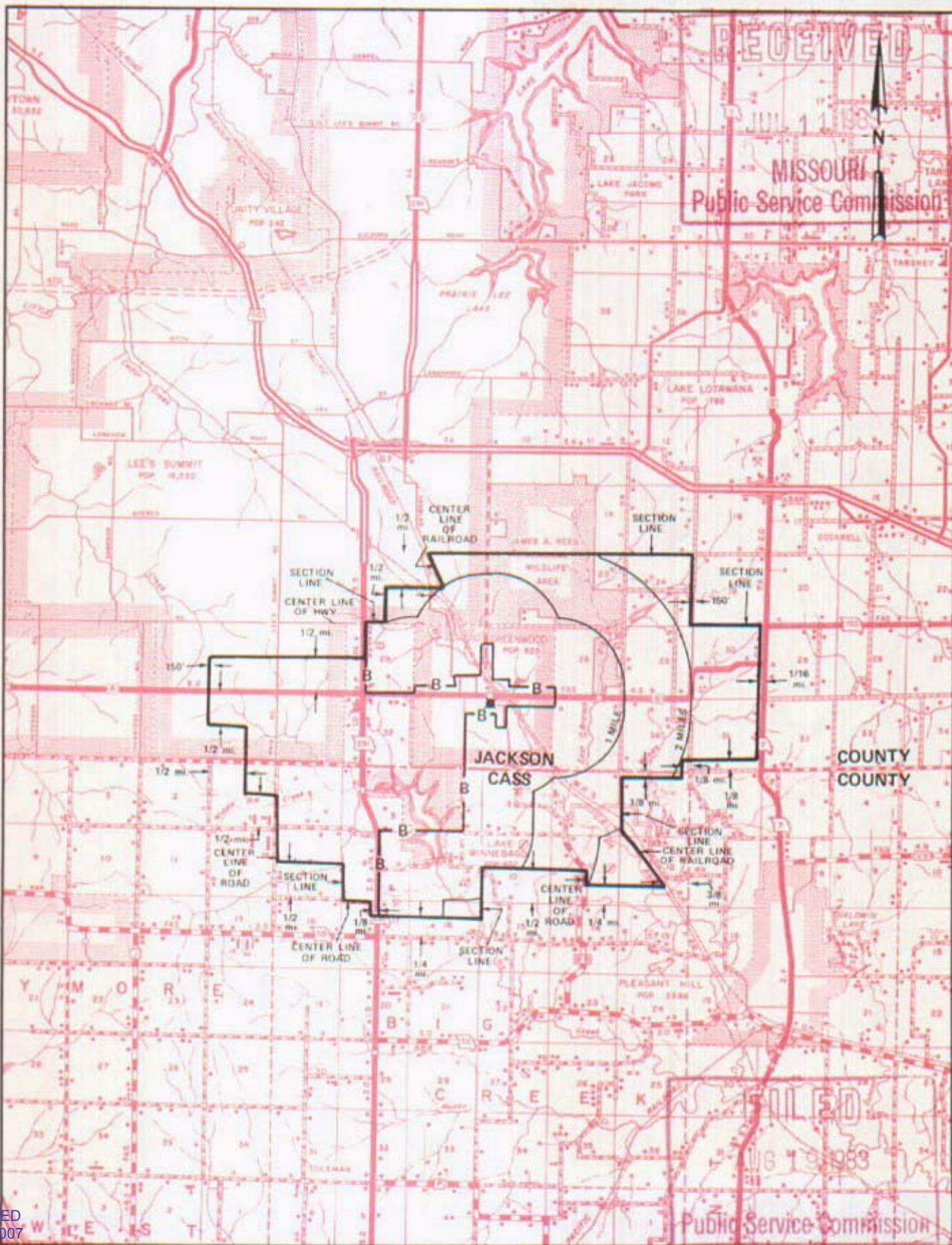
R2E | R3E

JUNE 7 1982

NO SUPPLEMENT TO THIS TARIFF WILL BE ISSUED EXCEPT FOR THE PURPOSE OF CANCELING THIS TARIFF.

P. S. C. Mo. No. 17 EXCHANGE AREA MAP

Greenwood, Missouri
7th REVISED SHEET 3
REPLACING 6th REVISED SHEET 3



T48N
T47N

T47N
T46N

T46N
T45N

R32W | R31W | R31W | R30W

By R. D. BARRON, Vice President, Missouri
Southwestern Bell Telephone Company

CANCELLED
June 29, 2007
TO-2002-185
Missouri Public
Service Commission

Issued: JULY 12, 1983

Effective: AUGUST 19, 1983

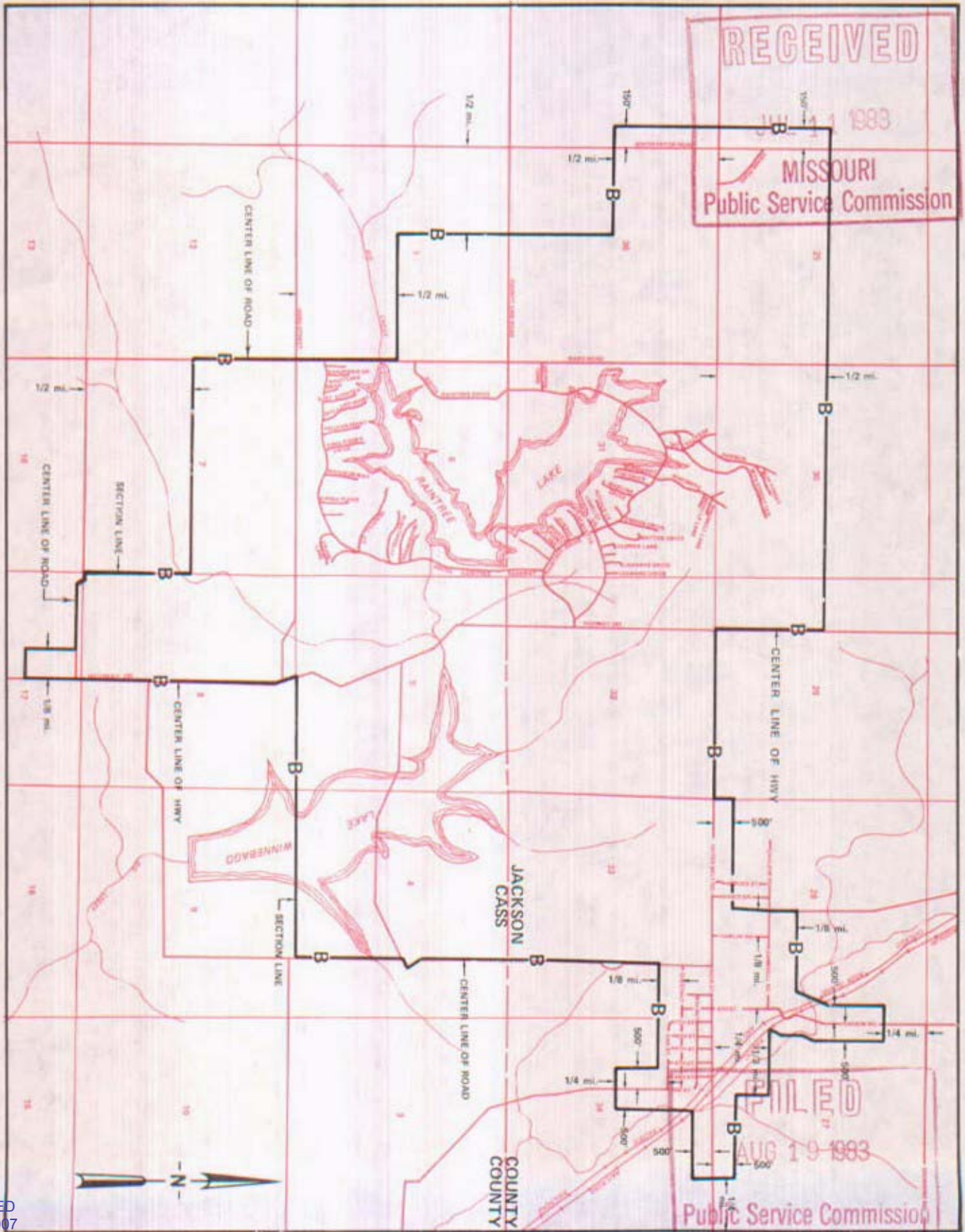
NO SUPPLEMENT TO THIS TARIFF WILL BE ISSUED EXCEPT FOR THE PURPOSE OF CANCELING THIS TARIFF.

P. S. C. Mo. No. 17

Greenwood, Missouri

3rd REVISED SHEET 2
REPLACING 2nd REVISED SHEET 2

BASE RATE AREA MAP



CANCELLED
June 29, 2007
TO-2002-185
Missouri Public
Service Commission

By R. D. BARRON, Vice President, Missouri
Southwestern Bell Telephone Company
St. Louis, Missouri

Issued: JULY 12, 1983

Effective: AUGUST 19, 1983