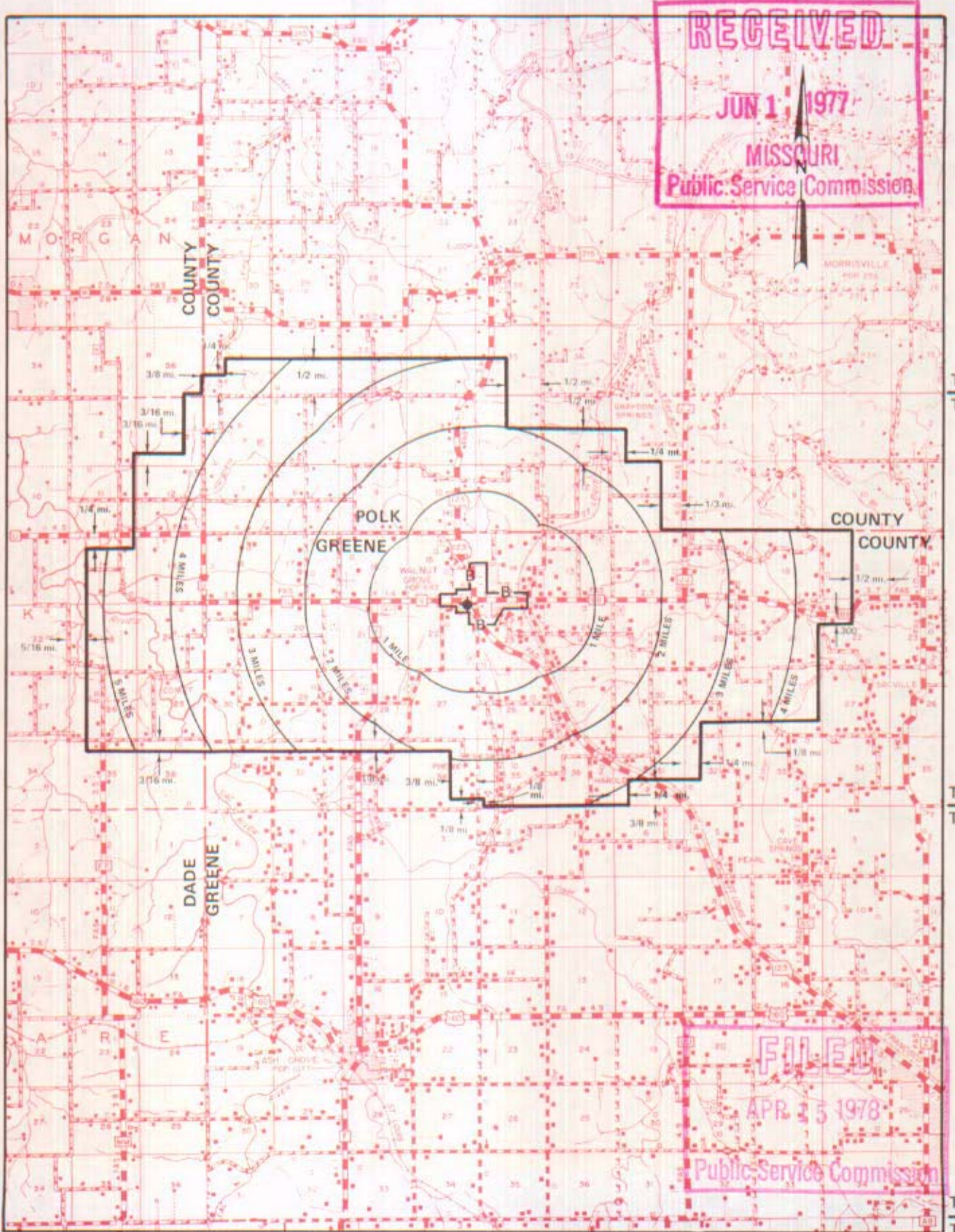


NO SUPPLEMENT TO THIS TARIFF WILL BE ISSUED EXCEPT FOR THE PURPOSE OF CANCELING THIS TARIFF.

P. S. C. Mo. No. 17
EXCHANGE AREA MAP

Walnut Grove, Missouri

6th REVISED SHEET 3
REPLACING 5th REVISED SHEET 3



Issued: June 1, 1977

By R. R. SHOCKLEY, Vice President, Missouri
Southwestern Bell Telephone Company
St. Louis, Missouri

Effective: APR 15 1978

NO SUPPLEMENT TO THIS TARIFF WILL BE ISSUED EXCEPT FOR THE PURPOSE OF CANCELING THIS TARIFF.

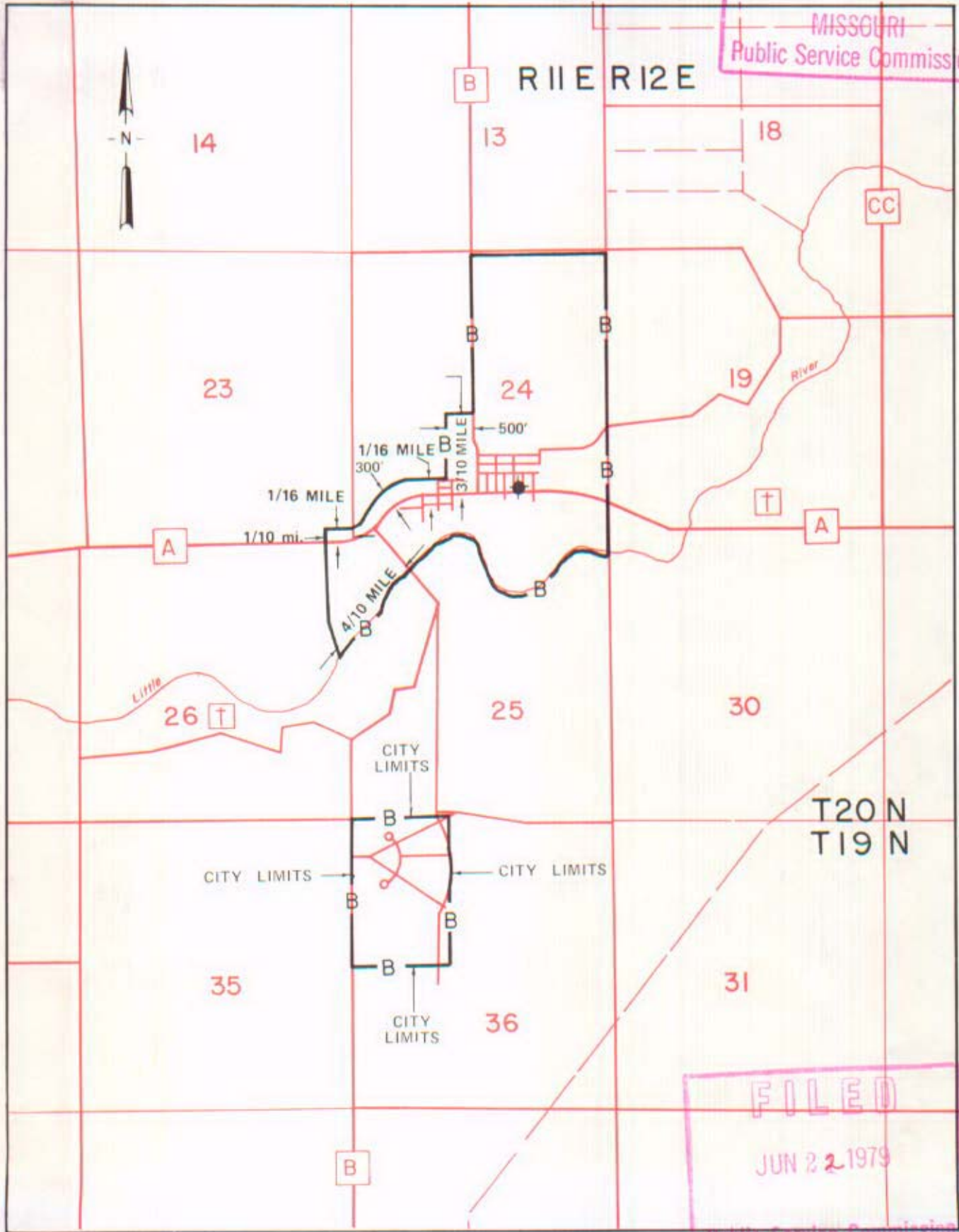
P. S. C. Mo. No. 17

BASE RATE AREA MAP

RECEIVED
Wardell, Missouri
4th REVISED SHEET 2
REPLACING 3rd REVISED SHEET 2

MAY 11 1979

MISSOURI
Public Service Commission



FILED
JUN 22 1979
Public Service Commission

By R. R. SHOCKLEY, Vice President, Missouri
Southwestern Bell Telephone Company
St. Louis, Missouri

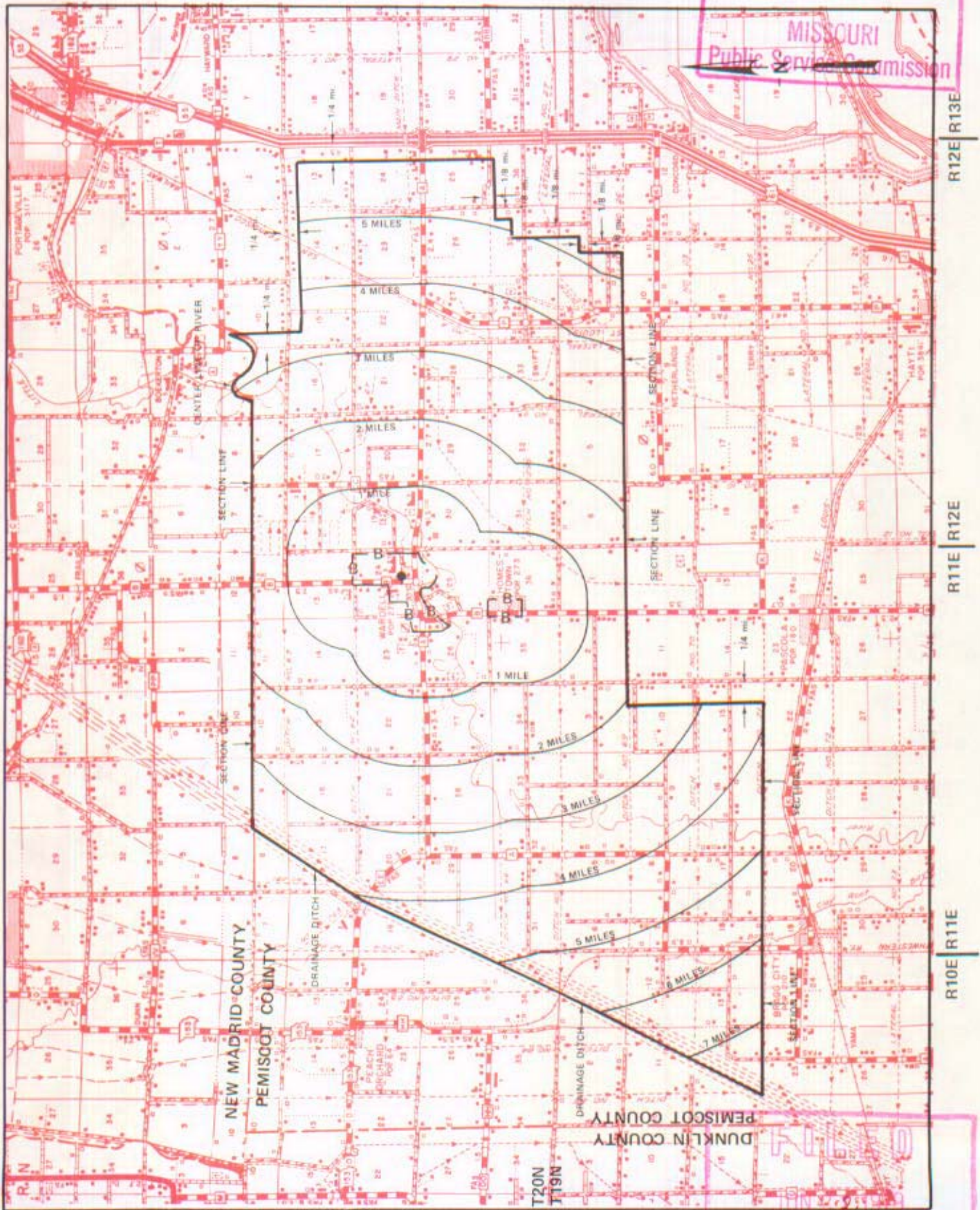
Issued: May 22, 1979

Effective: June 22, 1979

NO SUPPLEMENT TO THIS TARIFF WILL BE ISSUED EXCEPT FOR THE PURPOSE OF CANCELING THIS TARIFF.

P. S. C. Mo. No. 17 EXCHANGE AREA MAP

Wardell, Missouri
RECEIVED
6th REVISED SHEET 3
REPLACING 5th REVISED SHEET 3
MAY 11 1979
MISSOURI
Public Service Commission



T21N
T20N

By R. R. SHOCKLEY, Vice President, Missouri
Southwestern Bell Telephone Company
St. Louis, Missouri

Issued: May 22, 1979

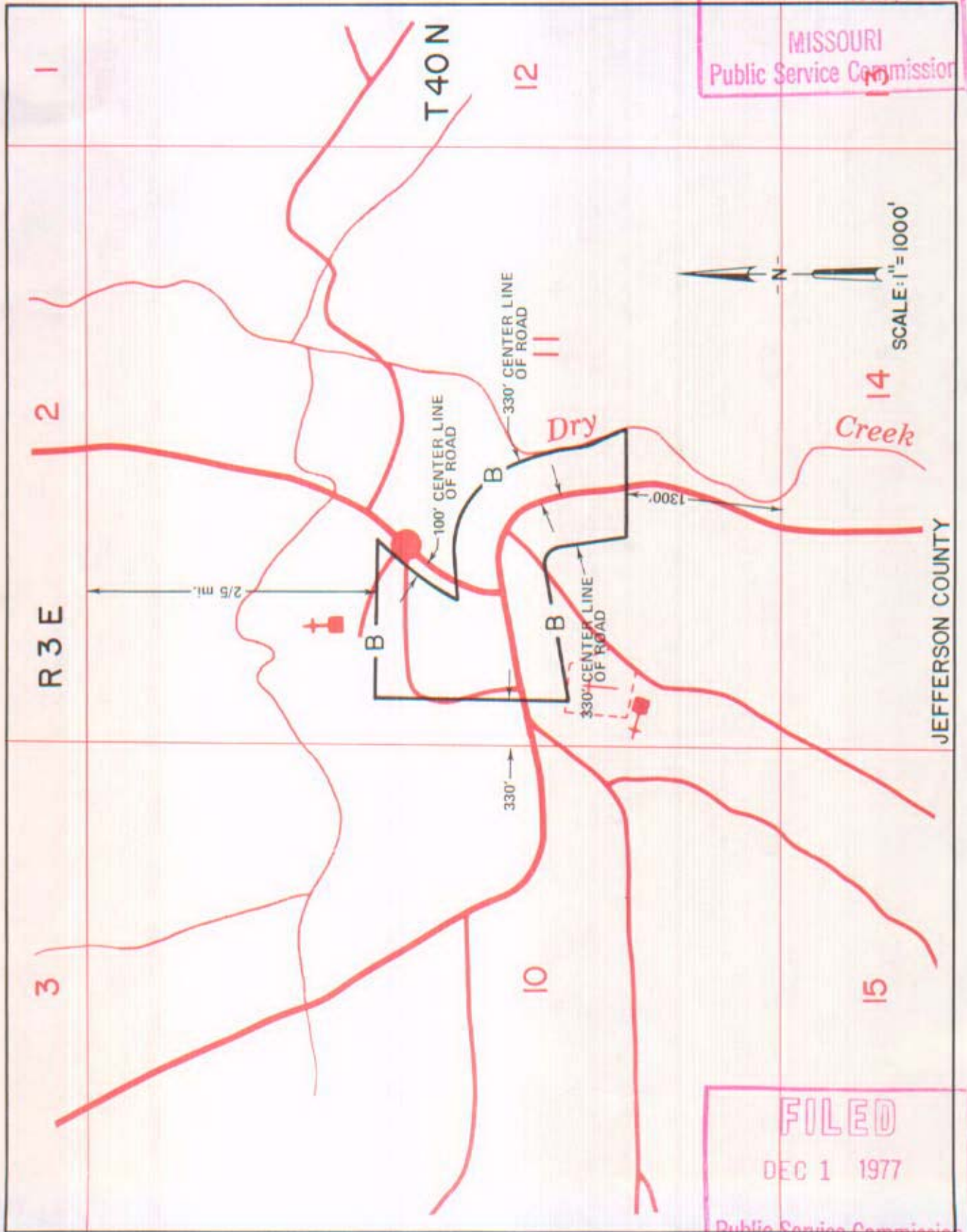
FILED
Public Service Commission
Effective: June 22, 1979

NO SUPPLEMENT TO THIS TARIFF WILL BE ISSUED EXCEPT FOR THE PURPOSE OF CANCELING THIS TARIFF.

P. S. C. Mo. No. 17

BASE RATE AREA MAP

Ware, Missouri
RECEIVED
 1st REVISED SHEET 2
 REPLACING ORIGINAL SHEET 2
 MAY 20 1977
 MISSOURI
 Public Service Commission



FILED
 DEC 1 1977
 Public Service Commission

By R. R. SHOCKLEY, Vice President, Missouri
 Southwestern Bell Telephone
 St. Louis, Missouri

Issued: MAY 23 1977

Effective: DEC 1 1977

NO SUPPLEMENT TO THIS TARIFF WILL BE ISSUED EXCEPT FOR THE PURPOSE OF CANCELING THIS TARIFF.

P. S. C. Mo. No. 17

EXCHANGE AREA MAP

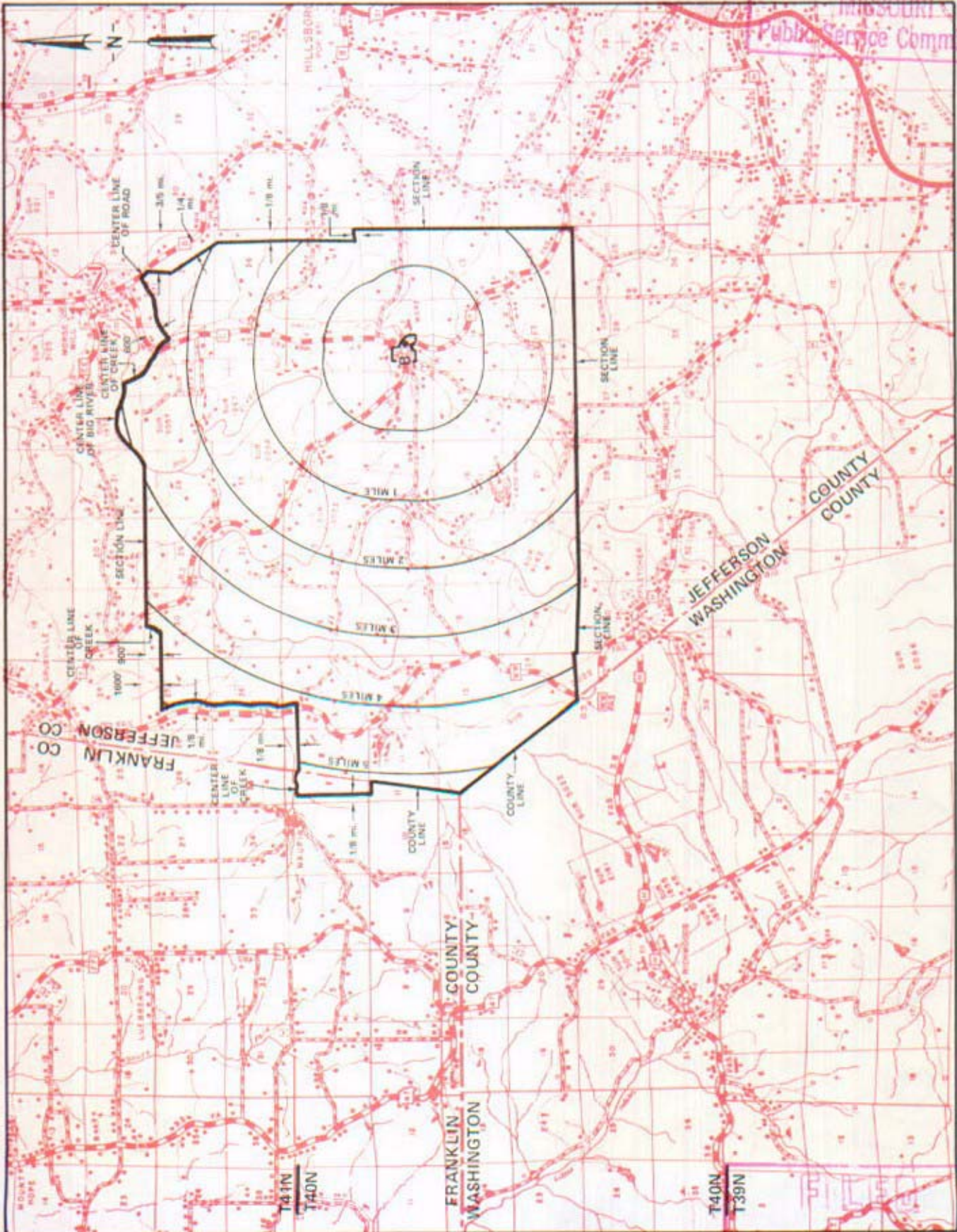
REPLACING 3rd REVISED SHEET 3

4th REVISED SHEET 3

MAY 20 1977

RECEIVED
Ware, Missouri

MISSOURI
Public Service Commission



By R. R. SHOCKLEY, Vice President, Missouri
Southwestern Bell Telephone Company
St. Louis, Missouri

Issued: May 23, 1977

DEC 1 1977

Public Service Commission
DEC 1 1977

NO SUPPLEMENT TO THIS TARIFF WILL BE ISSUED EXCEPT FOR THE PURPOSE OF CANCELING THIS TARIFF.

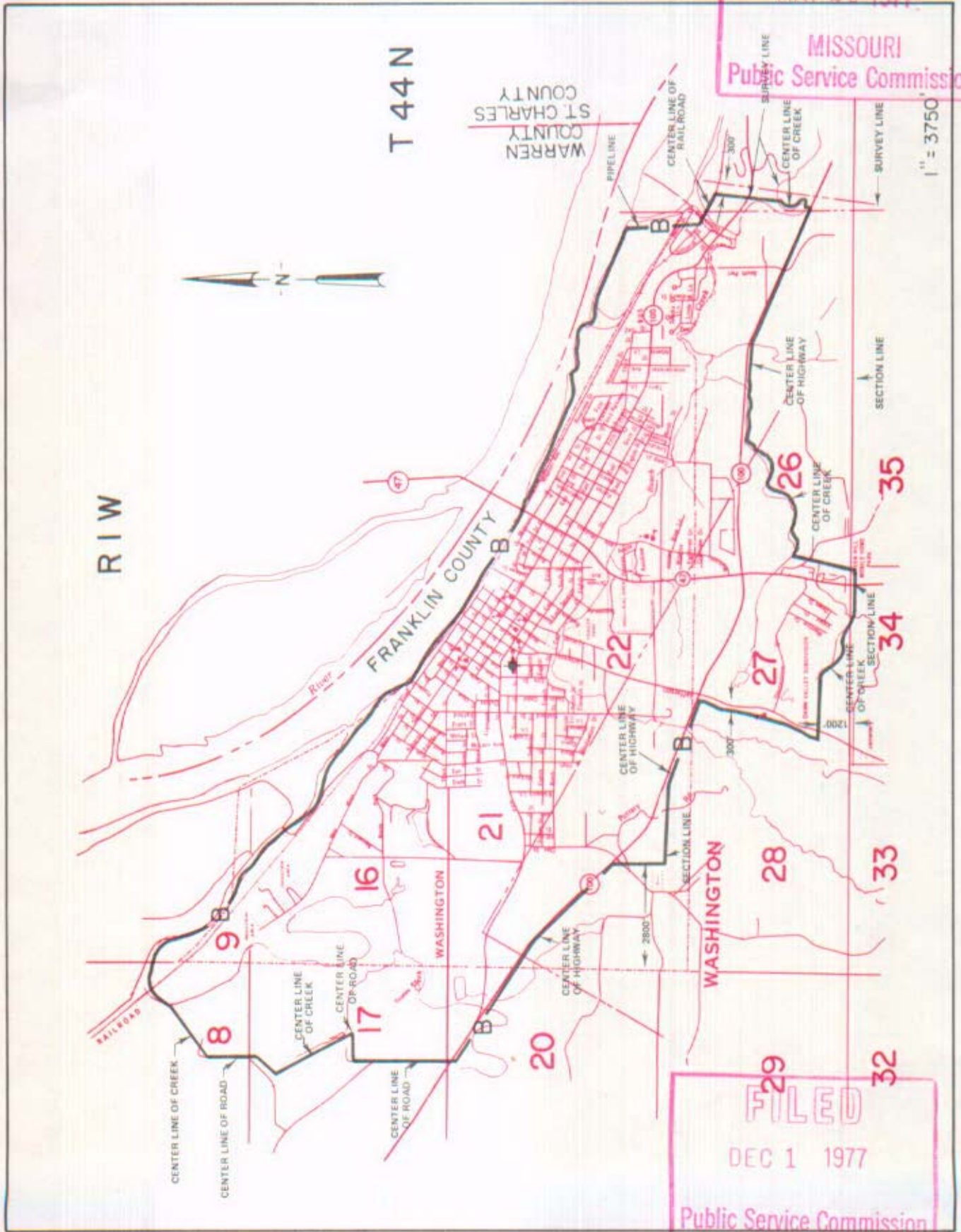
P. S. C. Mo. No. 17

BASE RATE AREA MAP

Washington, Missouri
RECEIVED
2nd REVISED SHEET 2
REPLACING 1st REVISED SHEET 2

MAY 20 1977

MISSOURI
Public Service Commission



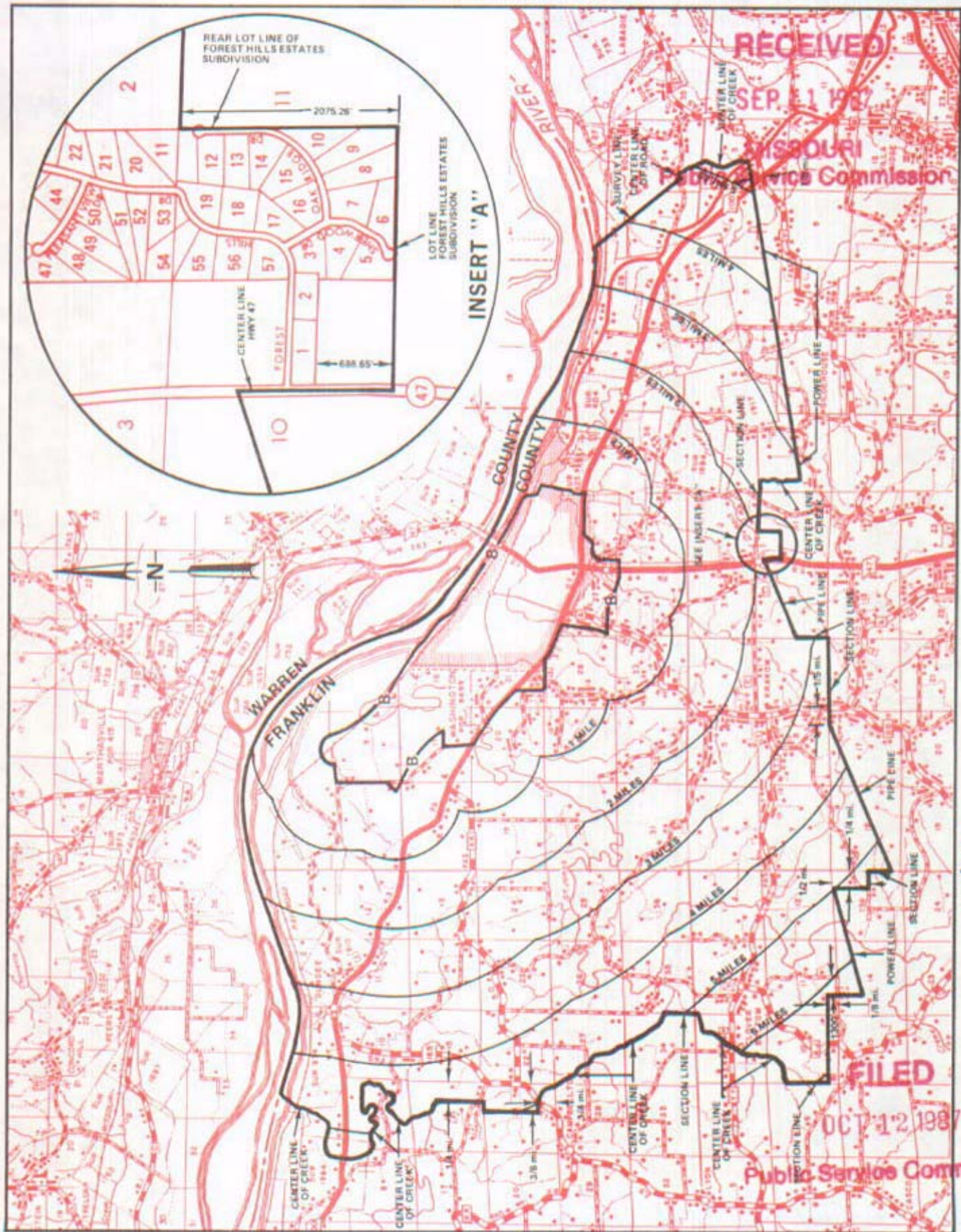
FILED
DEC 1 1977
Public Service Commission

By R. R. SHOCKLEY, Vice President, Missouri
Southwestern Bell Telephone
St. Louis, Missouri

Issued: MAY 23 1977

Effective: DEC 1 1977

EXCHANGE AREA MAP



T45N
T44N

T44N
T43N

By R. D. BARRON, President, Missouri Division
Southwestern Bell Telephone Company
St. Louis, Missouri

Issued: SEP 11 1987

Effective: OCT 12 1987

SBC PSC MO #17
Webb City, Missouri
4th Revised Sheet 2
Replacing 3rd Revised Sheet 2

Non-Scannable Map

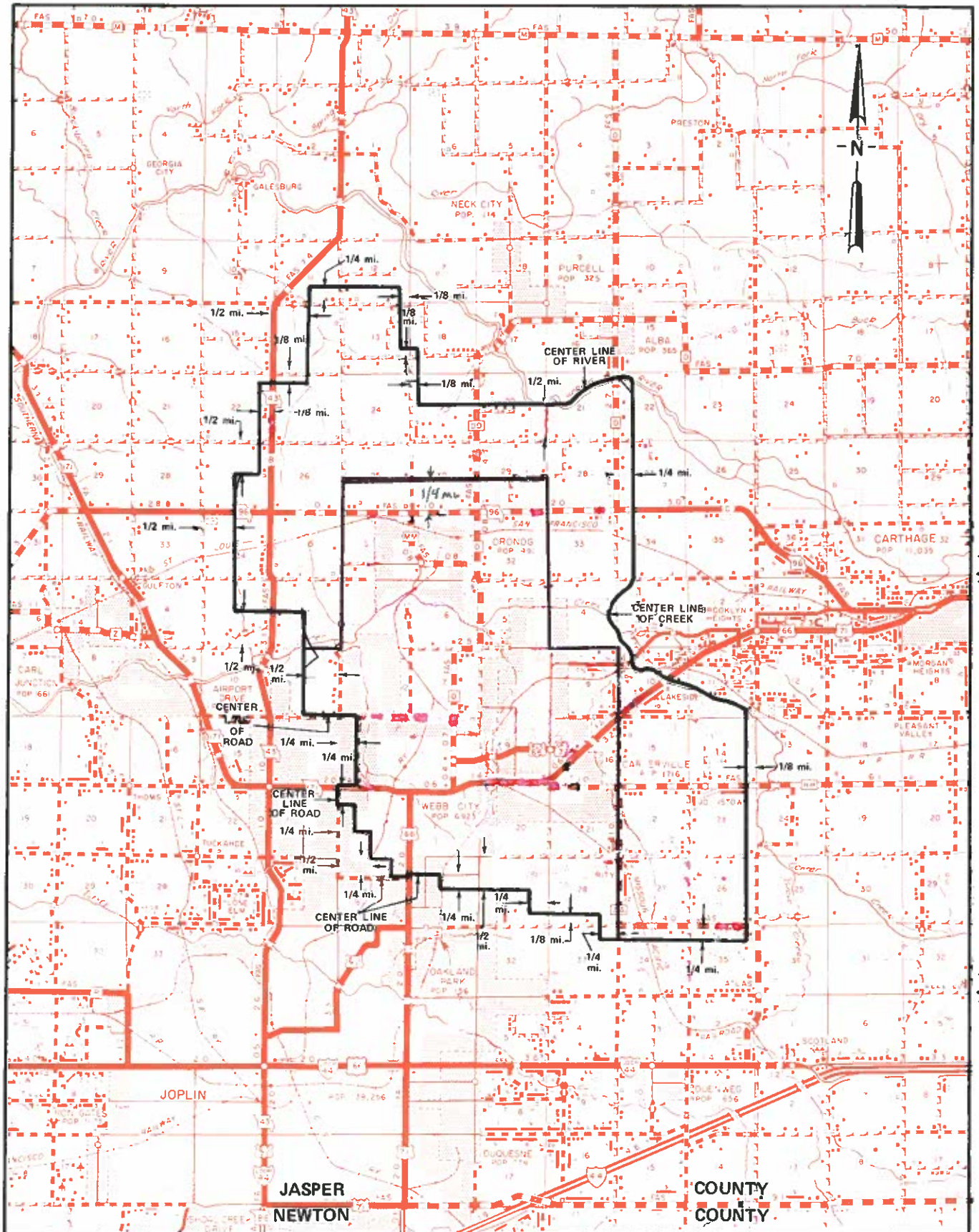
(Is viewable in the Data Center
200 Madison Street, 1st Floor
Jefferson City MO)

NO SUPPLEMENT TO THIS TARIFF WILL BE ISSUED EXCEPT FOR THE PURPOSE OF CANCELING THIS TARIFF.

P. S. C. Mo. No. 17 EXCHANGE AREA MAP

Webb City, Missouri

13th Revised Sheet 3
Replacing 12th Revised Sheet 3



T30N
T29N

T29N
T28N

T28N
T27N

R33W | R32W | R32W | R31W

Filed

By JOHN SONDRAG, President – Missouri
St. Louis, Missouri

Missouri Public
Service Commission
JI-2012-0133

Effective: October 29, 2011

Issued: September 29, 2011

WEBSTER GROVES

see

St. Louis District Exchange Rates

under

St. Louis

June 1, 1937

NO SUPPLEMENT TO THIS TARIFF WILL
BE ISSUED EXCEPT FOR THE PURPOSE OF
CANCELING THIS TARIFF.

P. S. C. Mo. No. 17
BASE RATE AREA MAP

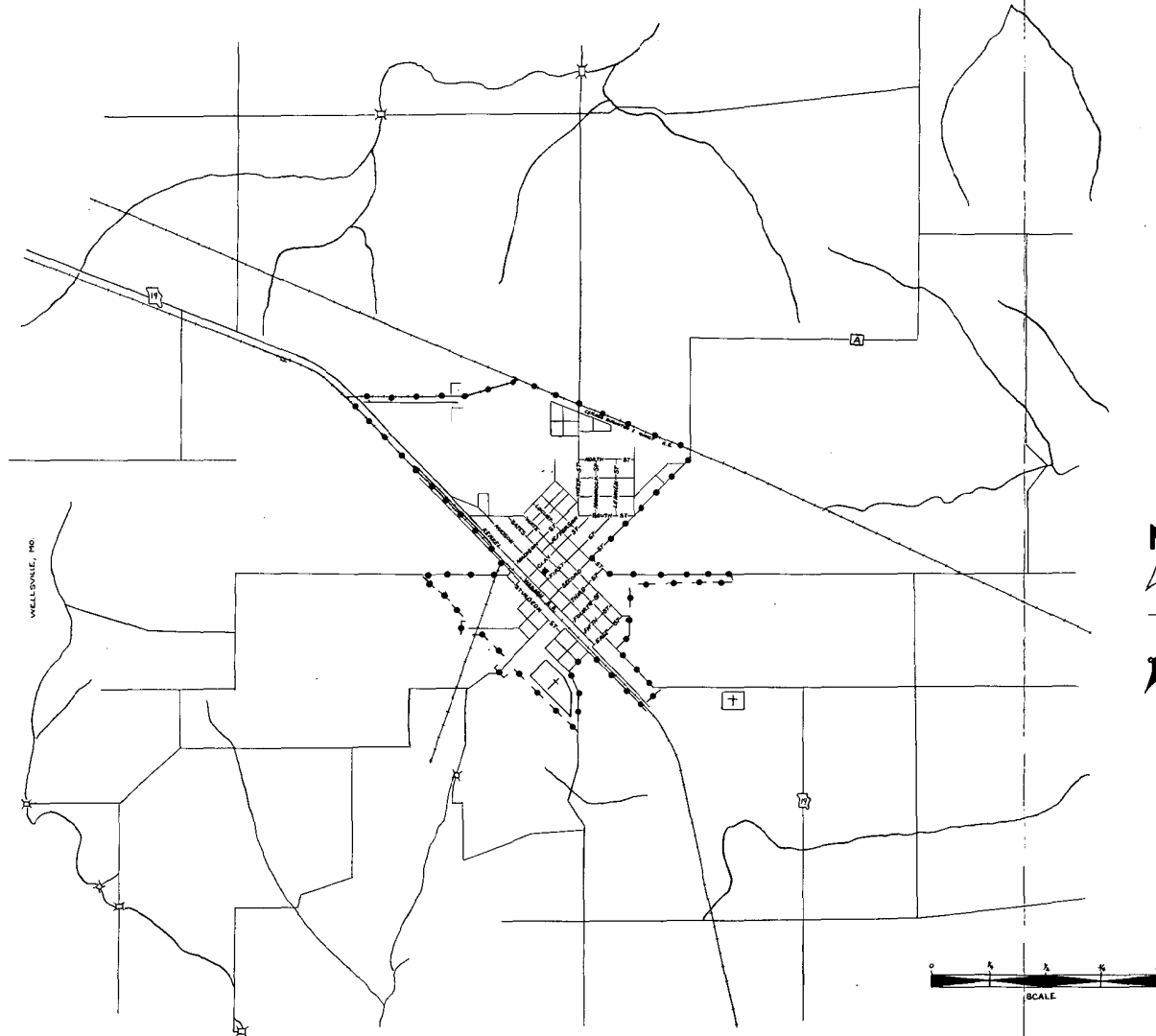
Wellsville, Missouri
ORIGINAL SHEET 2 ✓
REPLACING ORIGINAL SHEET 1-A

RECEIVED
JUL 21 1952
MISSOURI
Public Service Comm.

FILED

AUG 21 1952

PUBLIC SERVICE COMMISSION



Issued: July 21, 1952

By H. R. TOWLES, General Manager
Southwestern Bell Telephone Company
St. Louis, Missouri

Effective: August 21, 1952

CODE
BELL CENTRAL OFFICE: +
BASE RATE AREA LIMITS: ·····

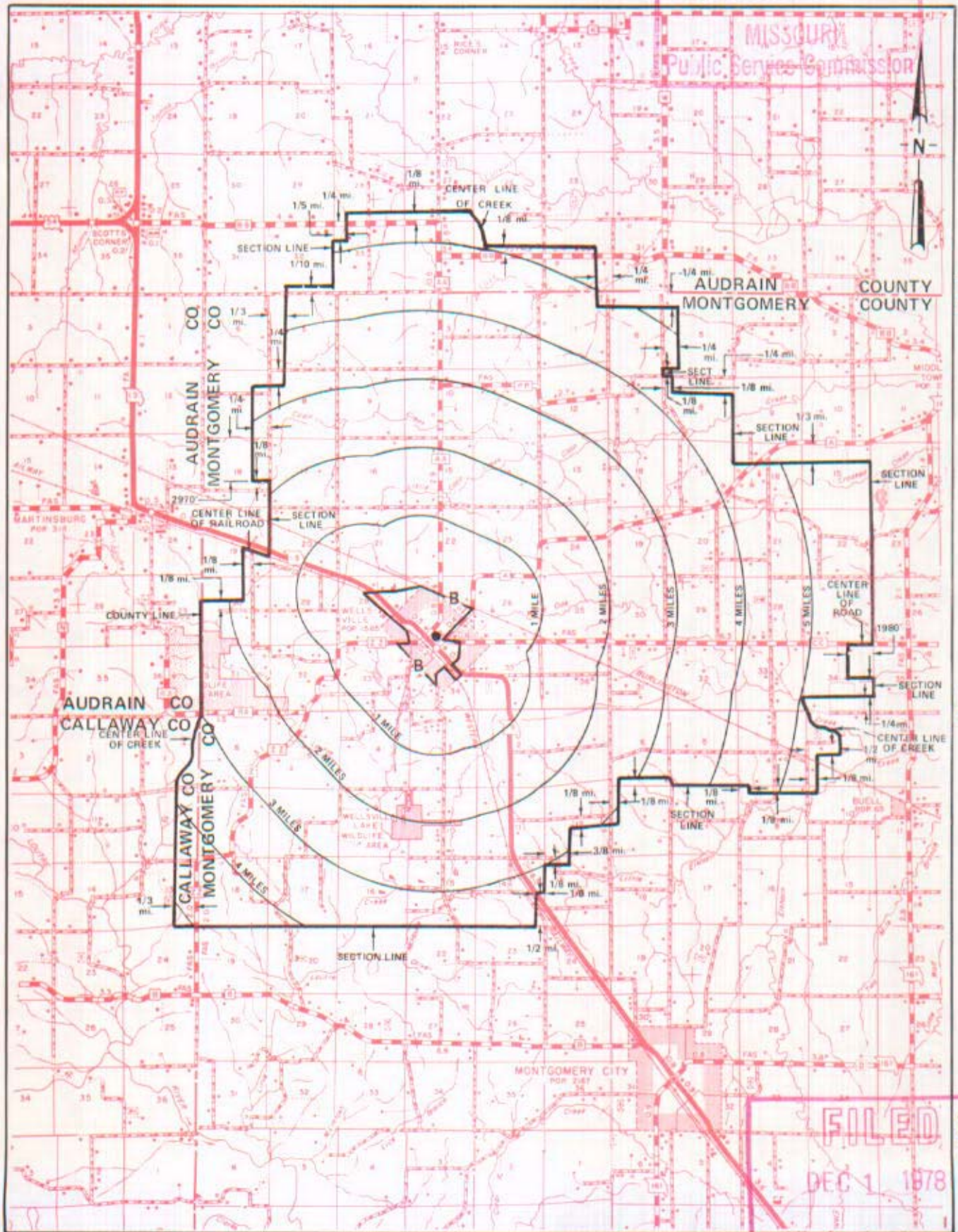
NO SUPPLEMENT TO THIS TARIFF WILL BE ISSUED EXCEPT FOR THE PURPOSE OF CANCELING THIS TARIFF.

P. S. C. Mo. No. 17

EXCHANGE AREA MAP

Wellsville, Missouri
REPLACING 5th REVISED SHEET 3
4th REVISED SHEET 3

FEB 14 1977



MISSOURI
Public Service Commission

FILED
DEC 1 1978
Public Service Commission

By R. R. SHOCKLEY, Vice President, Missouri
Southwestern Bell Telephone Company
St. Louis, Missouri

Issued: February 15, 1977

Effective: DEC 1 1978

SBC PSC MO #17
Westphalia, Missouri
Original Sheet 2
Replacing Ozark Central Tel. Co.
P.S.C. Mo. No. 1
Original Sheet 2

Non-Scannable Map

(Is viewable in the Data Center
200 Madison Street, 1st Floor
Jefferson City MO)

NO SUPPLEMENT TO THIS TARIFF WILL BE ISSUED EXCEPT FOR THE PURPOSE OF CANCELING THIS TARIFF.

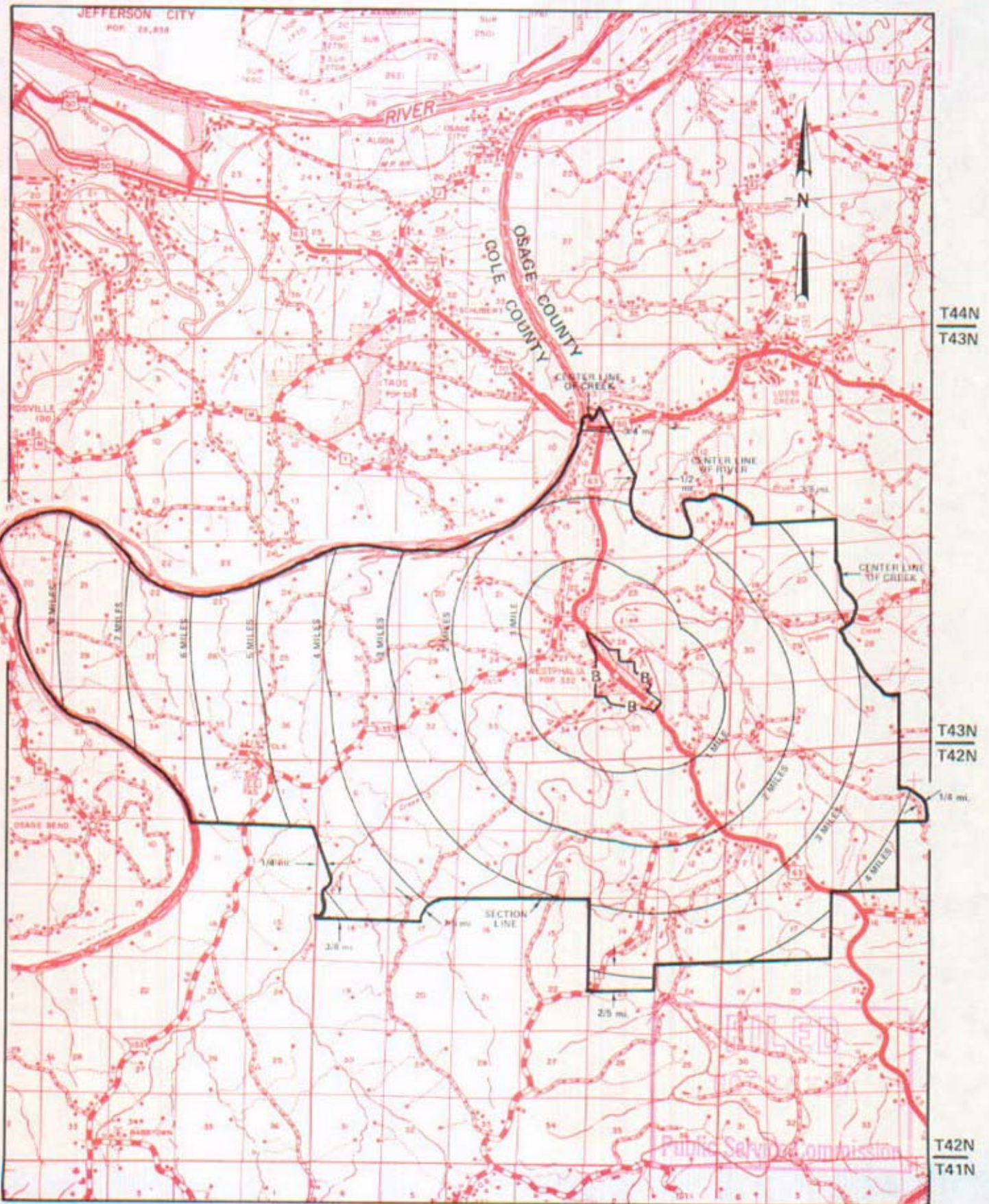
P. S. C. Mo. No. 17

Westphalia, Missouri

7th REVISED SHEET 3
REPLACING 6th REVISED SHEET 3

EXCHANGE AREA MAP

SEP 12 1980



R11W | R10W | R10W | R9W

By R. R. SHOCKLEY, Vice President, Missouri
Southwestern Bell Telephone Company
St. Louis, Missouri

Issued: SEPT 23, 1980

Effective: OCT 24, 1980

No supplement to this
tariff will be issued
except for the purpose
of canceling this tariff

WILLARD, MISSOURI
3rd Revised Sheet 2
Replacing 2nd Revised Sheet 2

BASE RATE AREA MAP

THIS AREA IS INCLUDED IN THE SPRINGFIELD METROPOLITAN EXCHANGE.

RECEIVED

MAY 25 1993

MO. PUBLIC SERVICE COMM.

FILED

JUL 07 1993
92-306

MO. PUBLIC SERVICE COMM.

Issued: **MAY 25 1993**

Effective: **JUL 07 1993**

By A. D. ROBERTSON, Assistant Vice President-External Affairs
Southwestern Bell Telephone Company
St. Louis, Missouri

No supplement to this
tariff will be issued
except for the purpose
of canceling this tariff

WILLARD, MISSOURI
14th Revised Sheet 3
Replacing 13th Revised Sheet 3

EXCHANGE AREA MAP

RECEIVED

THIS AREA IS INCLUDED IN THE SPRINGFIELD METROPOLITAN EXCHANGE. MAY 25 1993

MO. PUBLIC SERVICE COMM.

FILED

JUL 07 1993
92-306

MO. PUBLIC SERVICE COMM.

Issued: MAY 25 1993

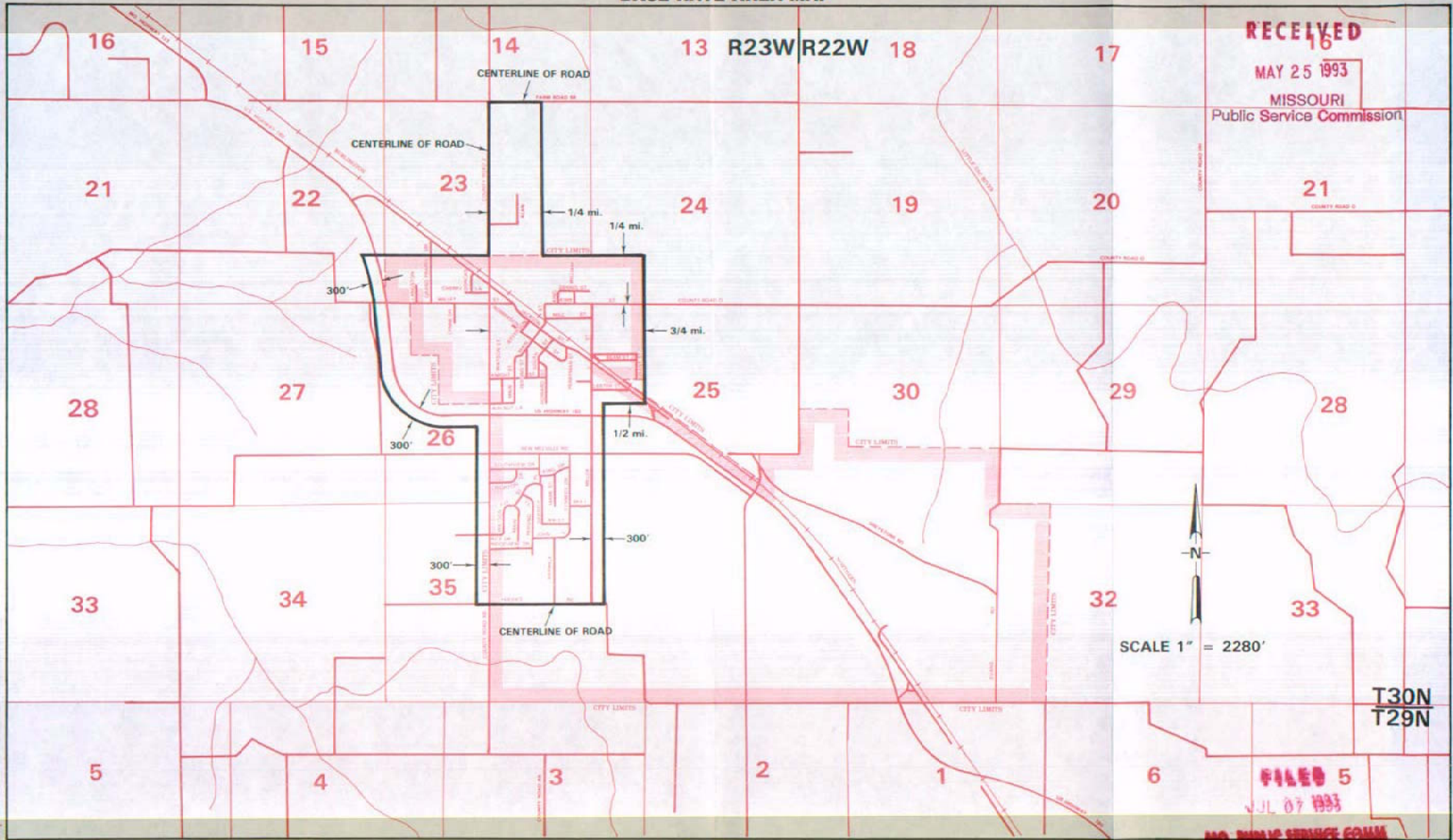
Effective: JUL 07 1993

By A. D. ROBERTSON, Assistant Vice President-External Affairs
Southwestern Bell Telephone Company
St. Louis, Missouri

NO SUPPLEMENT TO THIS TARIFF WILL BE ISSUED EXCEPT FOR THE PURPOSE OF CANCELING THIS TARIFF.

SPRINGFIELD METROPOLITAN EXCHANGE
Willard Zone
ORIGINAL SHEET 8-A

P. S. C. Mo. No. 17
BASE RATE AREA MAP



By A. D. ROBERTSON, Assistant Vice President - External Affairs
Southwestern Bell Telephone Company
St. Louis, Missouri

Issued: MAY 25, 1993

Effective: JULY 7, 1993

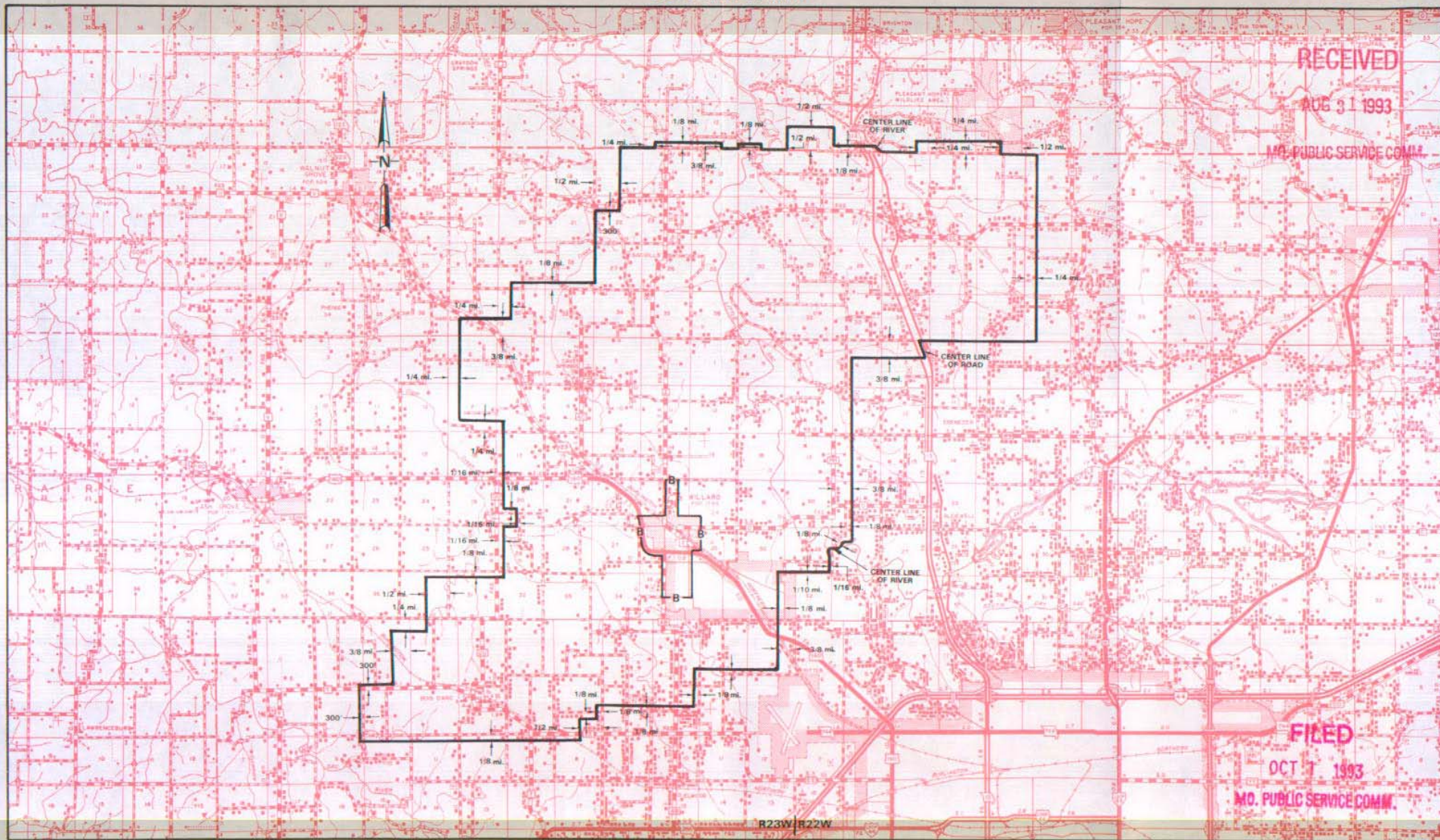
NO SUPPLEMENT TO THIS TARIFF WILL BE ISSUED EXCEPT FOR THE PURPOSE OF CANCELING THIS TARIFF.

SPRINGFIELD METROPOLITAN EXCHANGE

Willard Zone

1st REVISED SHEET 8-B
REPLACING ORIGINAL SHEET 8-B

P. S. C. Mo. No. 17 ZONE AREA MAP



R25W/R24W

R24W/R23W

R22W/R21W

R21W/R20W

By D. R. KAESHOFER, Division Manager-Regulatory & Industry Relations
Southwestern Bell Telephone Company
St. Louis, Missouri

Issued: SEPTEMBER 1, 1993

Effective: OCTOBER 1, 1993

SBC PSC MO #17

Wyatt, Missouri

Original Sheet 2

Replacing Southeast Missouri Telephone Company

P.S.C. Mo. No. 2

1st Revised Sheet 2

Non-Scannable Map

**(Is viewable in the Data Center
200 Madison Street, 1st Floor
Jefferson City MO)**

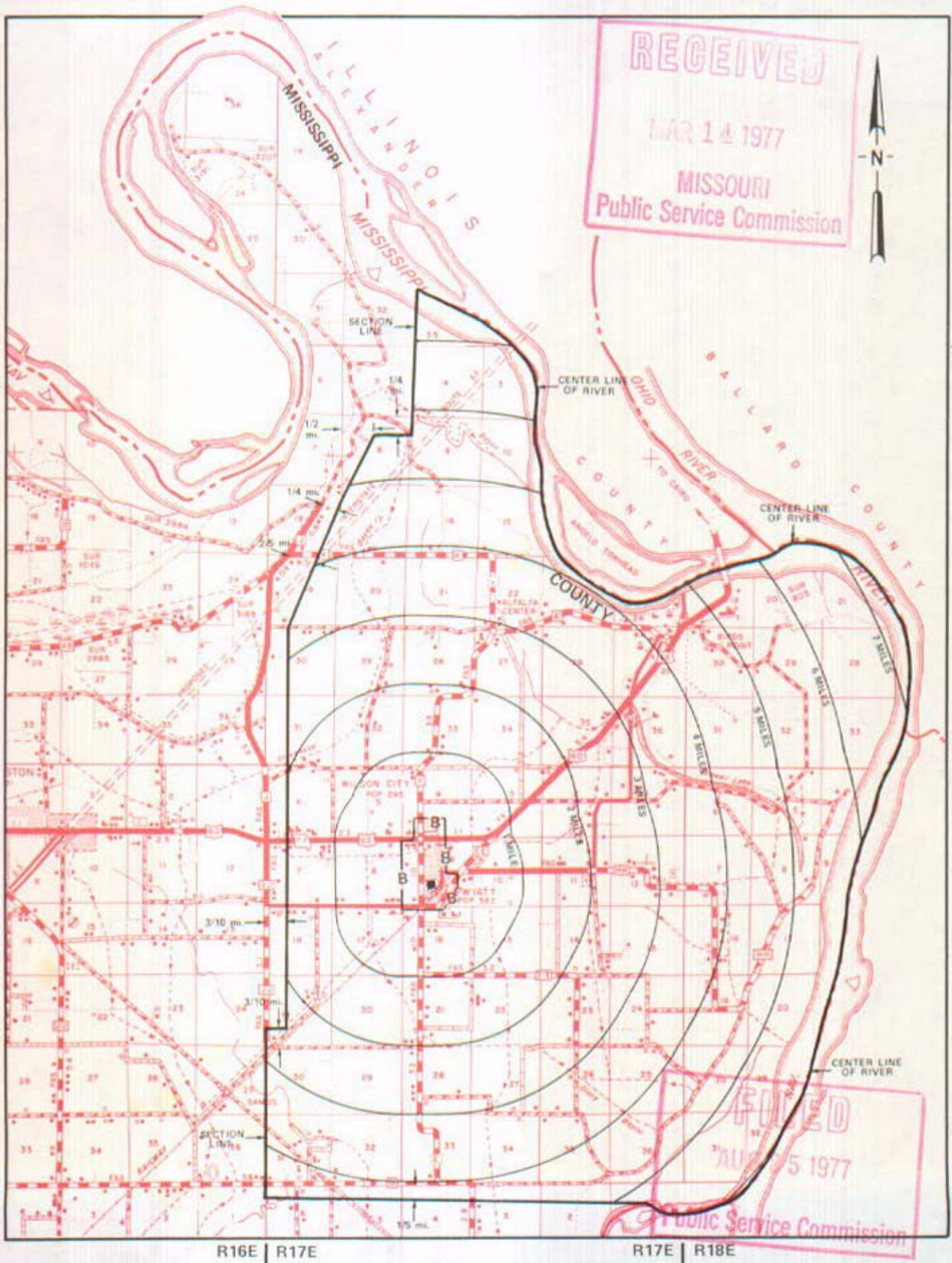
NO SUPPLEMENT TO THIS TARIFF WILL BE ISSUED EXCEPT FOR THE PURPOSE OF CANCELING THIS TARIFF.

P. S. C. Mo. No. 17

Wyatt, Missouri

EXCHANGE AREA MAP

2nd REVISED SHEET 3
REPLACING 1st REVISED SHEET 3



R16E | R17E

R17E | R18E

By R. R. SHOCKLEY, Vice President, Missouri
Southwestern Bell Telephone Company