

CANCELLED
June 29, 2007
TO-2002-185
Missouri Public
Service Commission

NO SUPPLEMENT TO THIS TARIFF WILL
BE ISSUED EXCEPT FOR THE PURPOSE OF
CANCELING THIS TARIFF.

P. S. C. Mo. No. 17
BASE RATE AREA MAP

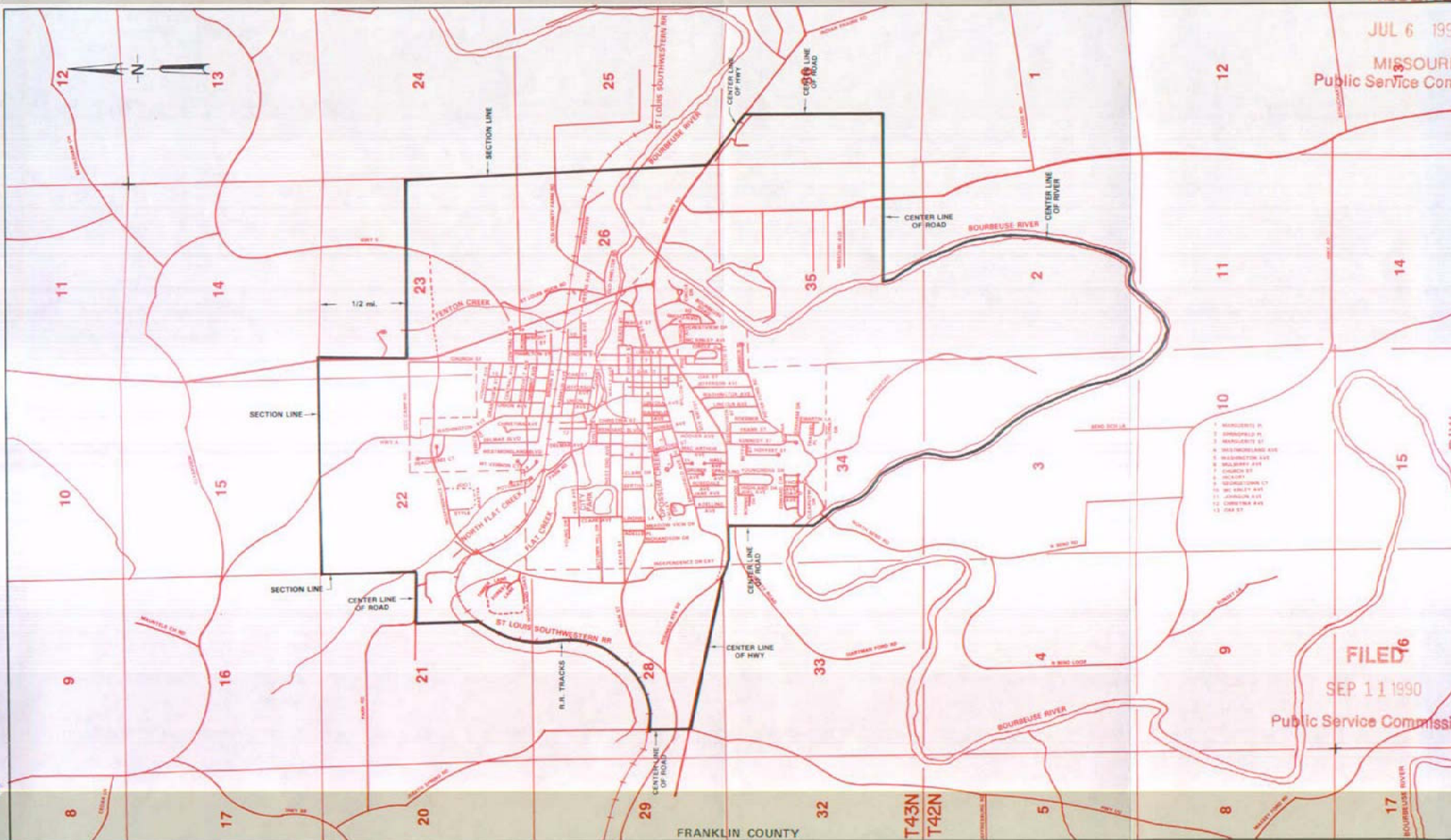
Union, Missouri

4th REVISED SHEET 2
REPLACING 3rd REVISED SHEET 2

RECEIVED

JUL 6 1990

MISSOURI
Public Service Commission



FILED

SEP 11 1990

Public Service Commission

JUL 16 1990

By R. D. BARRON, PRESIDENT, MISSOURI DIVISION
Southwestern Bell Telephone Company
St. Louis, Missouri

Effective: SEP 11 1990

Issued: _____

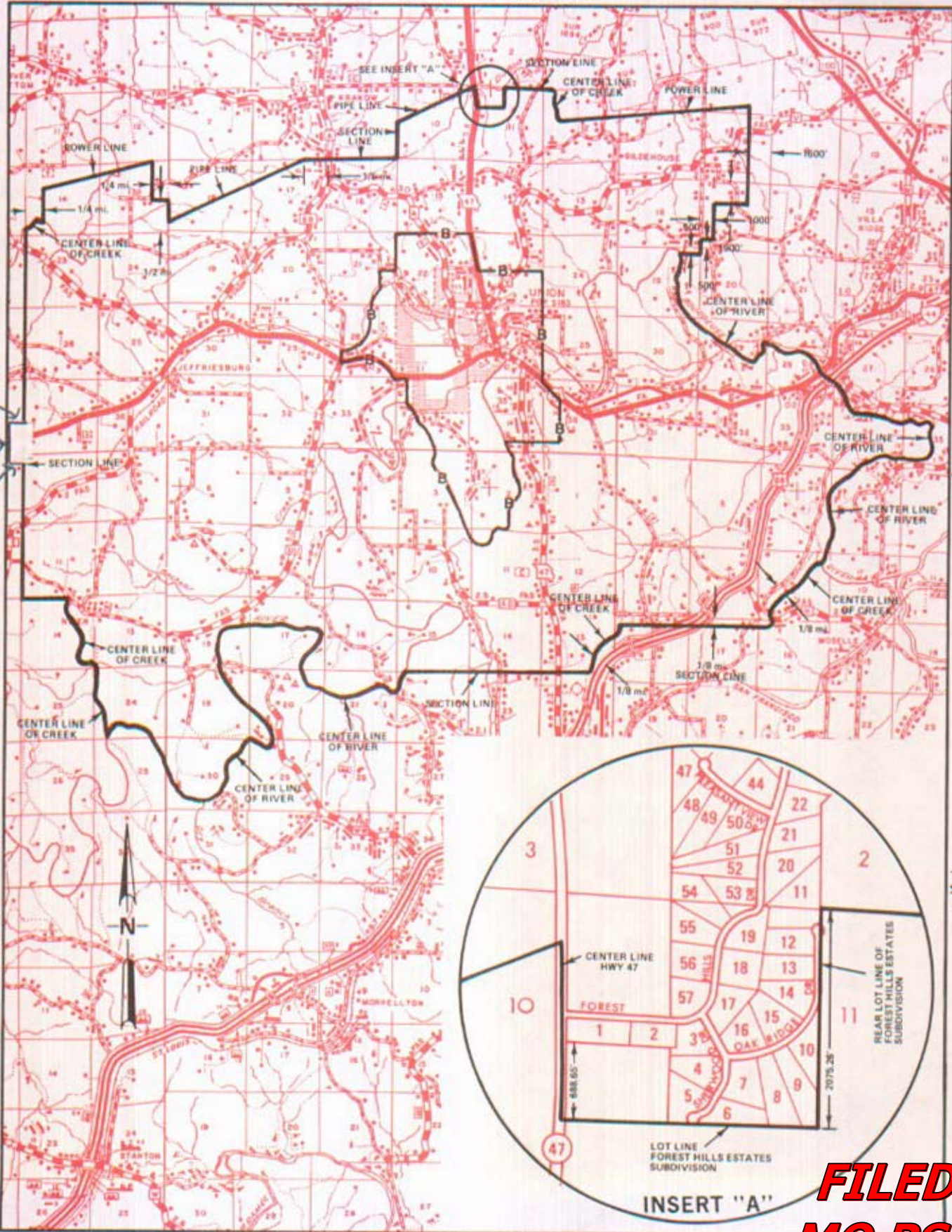
NO SUPPLEMENT TO THIS TARIFF WILL BE ISSUED EXCEPT FOR THE PURPOSE OF CANCELING THIS TARIFF.

P. S. C. Mo. No. 17

Union, Missouri

REPLACING 8th Revised Sheet 3
7th Revised Sheet 3

EXCHANGE AREA MAP



1,500' North
1,300' West
1,500' South

FILED
MO PSC

CANCELLED
June 29, 2007
TO-2002-185
Missouri Public
Service Commission

Issued: January 30, 2006

By CINDY BRINKLEY, President-Missouri
Southwestern Bell Telephone, L.P., d/b/a AT&T Missouri
St. Louis, Missouri

Effective: March 1, 2006

NO SUPPLEMENT TO THIS TARIFF WILL BE ISSUED EXCEPT FOR THE PURPOSE OF CANCELING THIS TARIFF.

P. S. C. Mo. No. 17

Union, Missouri

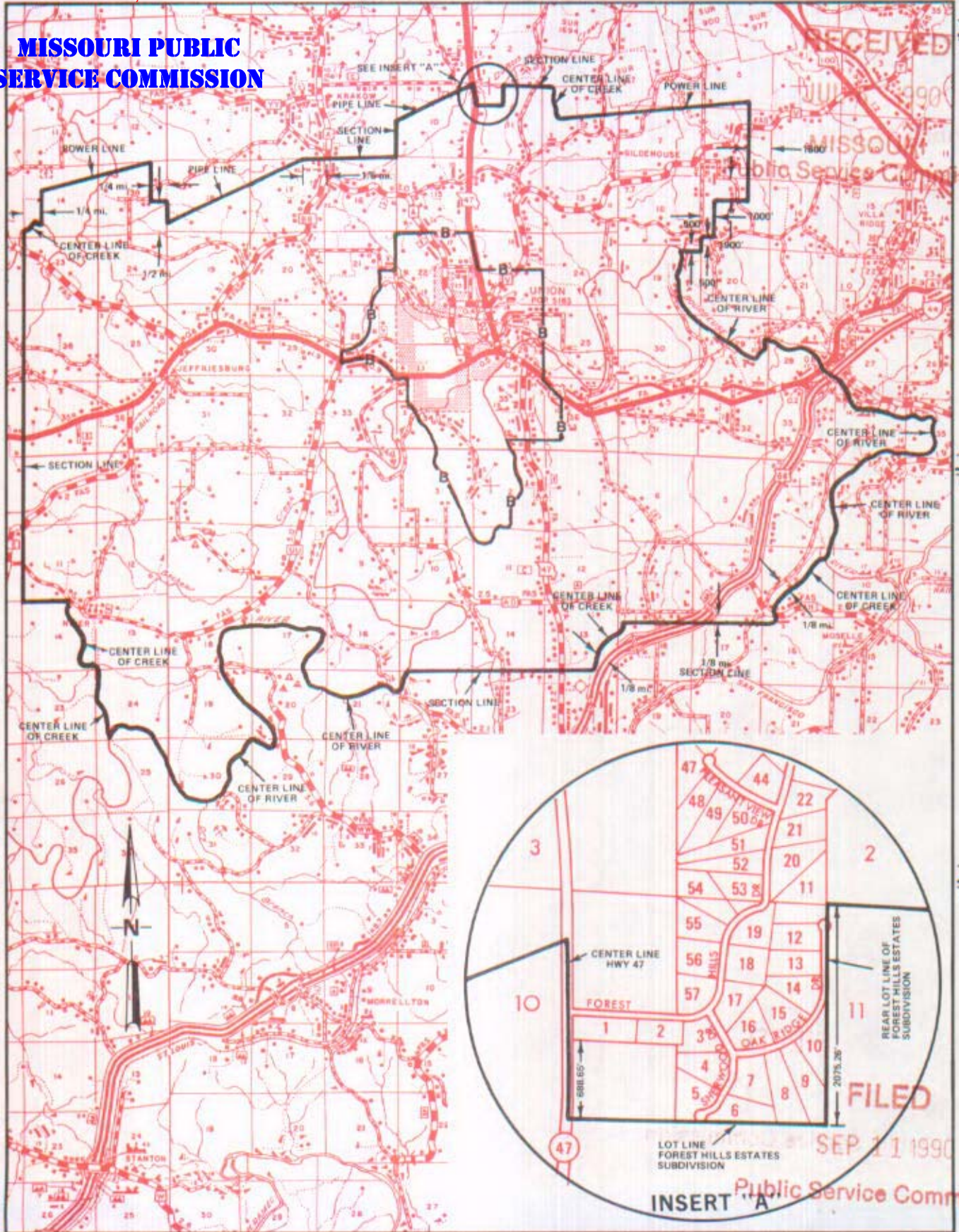
7th REVISED SHEET 3
REPLACING 6th REVISED SHEET 3

CANCELLED

March 1, 2006

EXCHANGE AREA MAP

MISSOURI PUBLIC SERVICE COMMISSION



R2W | R1W

R1W | R2W

Issued: **JUL 16 1990**

By R. D. BARRON, President, Missouri Division
Southwestern Bell Telephone Company
St. Louis, Missouri

Effective: **SEP 11 1990**

UNIONTOWN - SEE OLD APPLETON