

P.S.C. Mo. - No. 17

Southwestern Bell Telephone Company
d/b/a AT&T Missouri

Missouri Portion-Cross-Boundary Exchange
Adoption Notice
3rd Revised Sheet 1
Replacing 2nd Revised Sheet 1

ADOPTION NOTICE

Southwestern Bell Telephone Company d/b/a AT&T Missouri, hereby adopts, ratifies, and makes its own, (CT)
in every respect as if the same had been originally filed by it, all schedules, rules, notices, concurrences,
schedule agreements, divisions, authorities, or other instruments whatsoever filed with the Public Service
Commission, State of Missouri, by Southwestern Bell Telephone, L.P. d/b/a/ AT&T Missouri and its (CT)
predecessors prior to June 29, 2007. By this notice, Southwestern Bell Telephone Company d/b/a AT&T (CT)
Missouri, also adopts and ratifies all supplements or amendments to any of the above schedules, etc.,
which Southwestern Bell Telephone, L.P., d/b/a AT&T Missouri and its predecessors have heretofore filed (CT)
with said Commission.

Issued: June 26, 2007

By CINDY BRINKLEY, President – Missouri
St. Louis, Missouri

Effective: ~~July 26, 2007~~
June 29, 2007

FILED
Missouri Public
Service Commission
TO-2002-185

**P.S.C. Mo. - No. 17
LOCAL EXCHANGE - MISSOURI PORTION TARIFF**

Southwestern Bell Telephone
Company d/b/a AT&T Missouri

Title Page
5th Revised Sheet 1
Replacing 4th Revised Sheet 1

MISSOURI PORTION - CROSS-BOUNDARY EXCHANGE

TITLE SHEET

SOUTHWESTERN BELL TELEPHONE COMPANY d/b/a

AT&T MISSOURI

(RT)

(RT)

(RT)

Southwestern Bell Telephone Company d/b/a AT&T Missouri
operates as a Competitive Telecommunications Company.

Southwestern Bell Telephone Company d/b/a
AT&T Missouri hereby adopts this tariff.

Applying to its authorized territories within the State of Missouri.

Issued: April 1, 2014

By JOHN SONDAG, President - Missouri
St. Louis, Missouri

Effective: May 1, 2014

FILED
Missouri Public
Service Commission
JI-2014-0379

P.S.C. Mo. - No. 17
LOCAL EXCHANGE - MISSOURI PORTION TARIFF

Southwestern Bell Telephone
Company d/b/a AT&T Missouri

Section 1
49th Revised Sheet 1
Replacing 48th Revised Sheet 1

The LOCAL EXCHANGE - MISSOURI PORTION TARIFF, P.S.C. Mo.-No. 17, Sections 1 through 6 have been withdrawn. Information regarding rates, terms and conditions for Sections 1 through 6 now appears in the Missouri Guidebook at att.com/servicepublications.

Boundary Maps for the Company's exchanges and base rate areas remain on file in this tariff at the Missouri Public Service Commission.

TRADEMARKS AND SERVICE MARKS

Telcordia® and Common Language® are registered trademarks and iconectiv, CLCI, CLEI, CLFI, CLLI, USOC, FID, NC, NCI and NC/NCI, are trademarks of Telcordia Technologies, Inc. The Common Language codes identified herein are the proprietary information of Telcordia Technologies, Inc. d/b/a iconectiv ("iconectiv") and are licensed to AT&T Services, Inc. The Common Language codes provided herein, if applicable, are solely for the purpose of this Tariff and may not be reproduced, stored or used for any other purpose without the express, written consent of iconectiv.

(AT)

(AT)

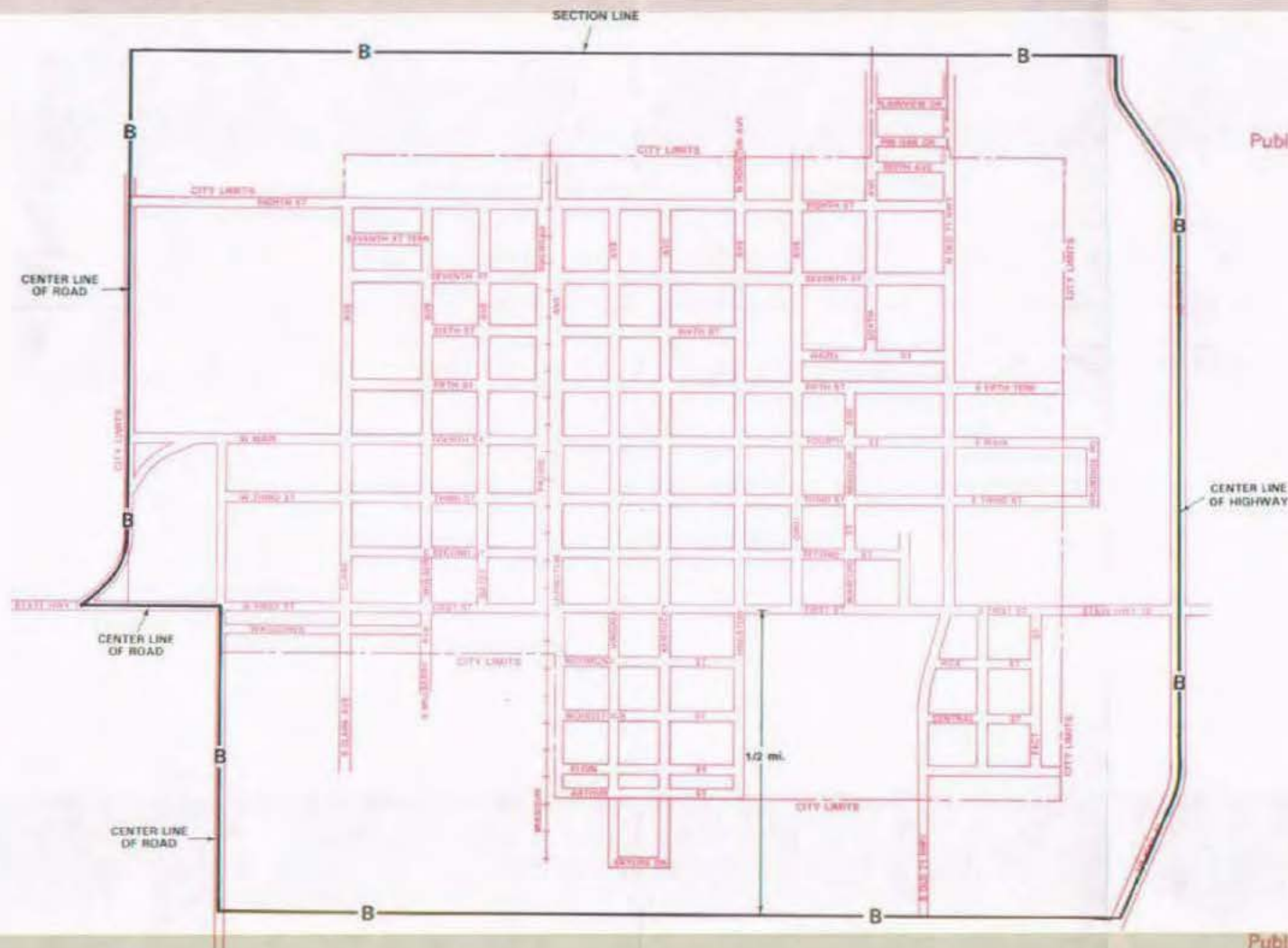
NO SUPPLEMENT TO THIS TARIFF WILL BE ISSUED EXCEPT FOR THE PURPOSE OF CANCELING THIS TARIFF.

P. S. C. Mo. No. 17
BASE RATE AREA MAP

Adrian, Missouri

1st REVISED SHEET 2
REPLACING ORIGINAL SHEET 2

RECEIVED
AUG 14 1991
MISSOURI
Public Service Commission



FILED
SEP 3 0 1991
Public Service Commission

Issued: AUG 23 1991

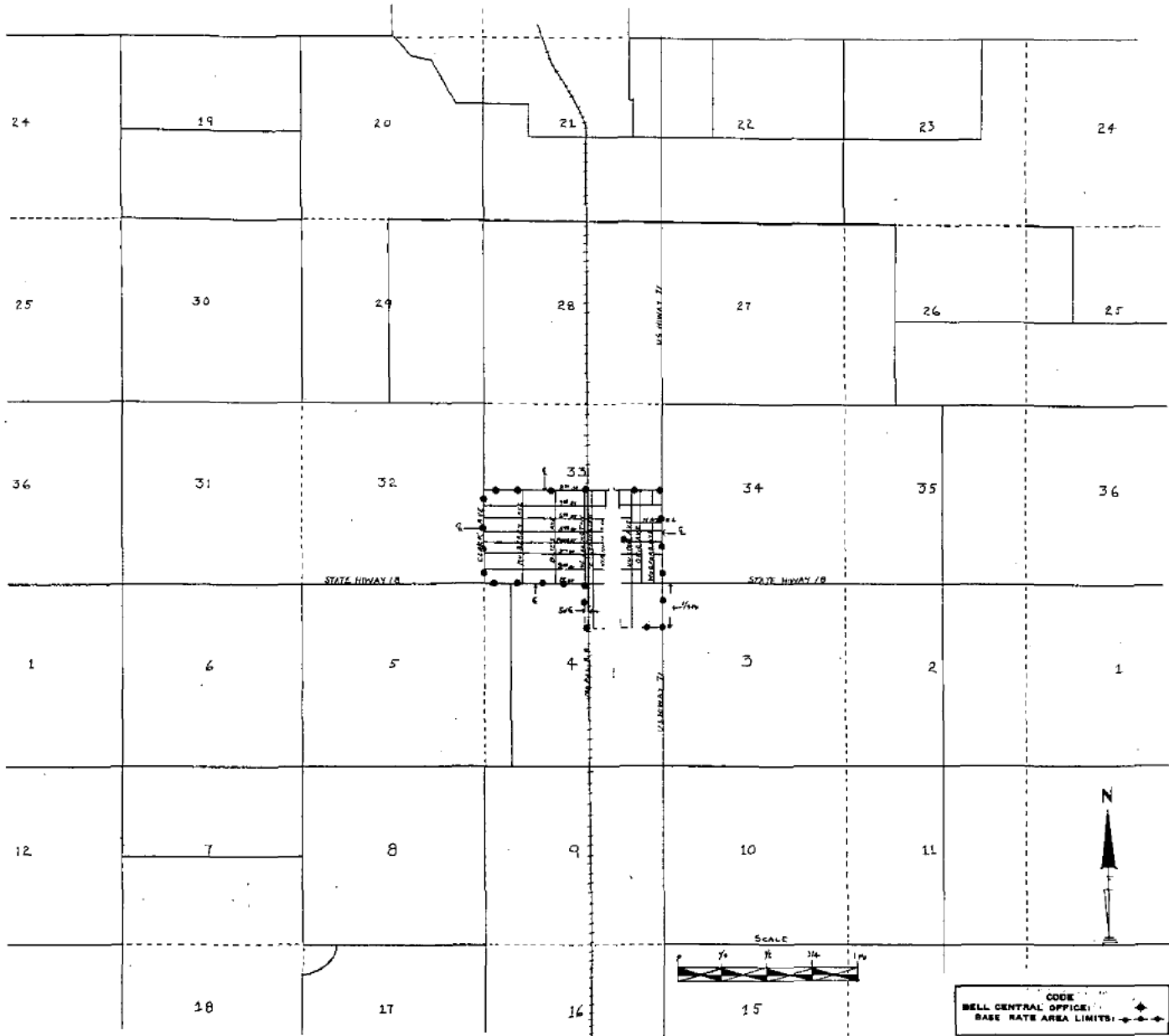
By R. D. BARRON, PRESIDENT, MISSOURI DIVISION
Southwestern Bell Telephone Company
St. Louis, Missouri

Effective: SEP 3 0 1991

NO SUPPLEMENT TO THIS TARIFF WILL BE ISSUED EXCEPT FOR THE PURPOSE OF CANCELING THIS TARIFF.

P. S. C. Mo. No. 17
BASE RATE AREA MAP

ST. LOUIS, MISSOURI
ORIGINAL SHEET 2
REPLACING WESTERN LIGHT & TELEPHONE
COMPANY'S P. S. C. No. 3
INITIAL RATE AREA MAP
REPLACES



Issued: June 1, 1955

By J. P. PETERSON, General Manager
Southwestern Bell Telephone Company
St. Louis, Missouri

Effective: July 1, 1955

NO SUPPLEMENT TO THIS TARIFF WILL BE ISSUED EXCEPT FOR THE PURPOSE OF CANCELING THIS TARIFF.

P. S. C. Mo. No. 17 EXCHANGE AREA MAP

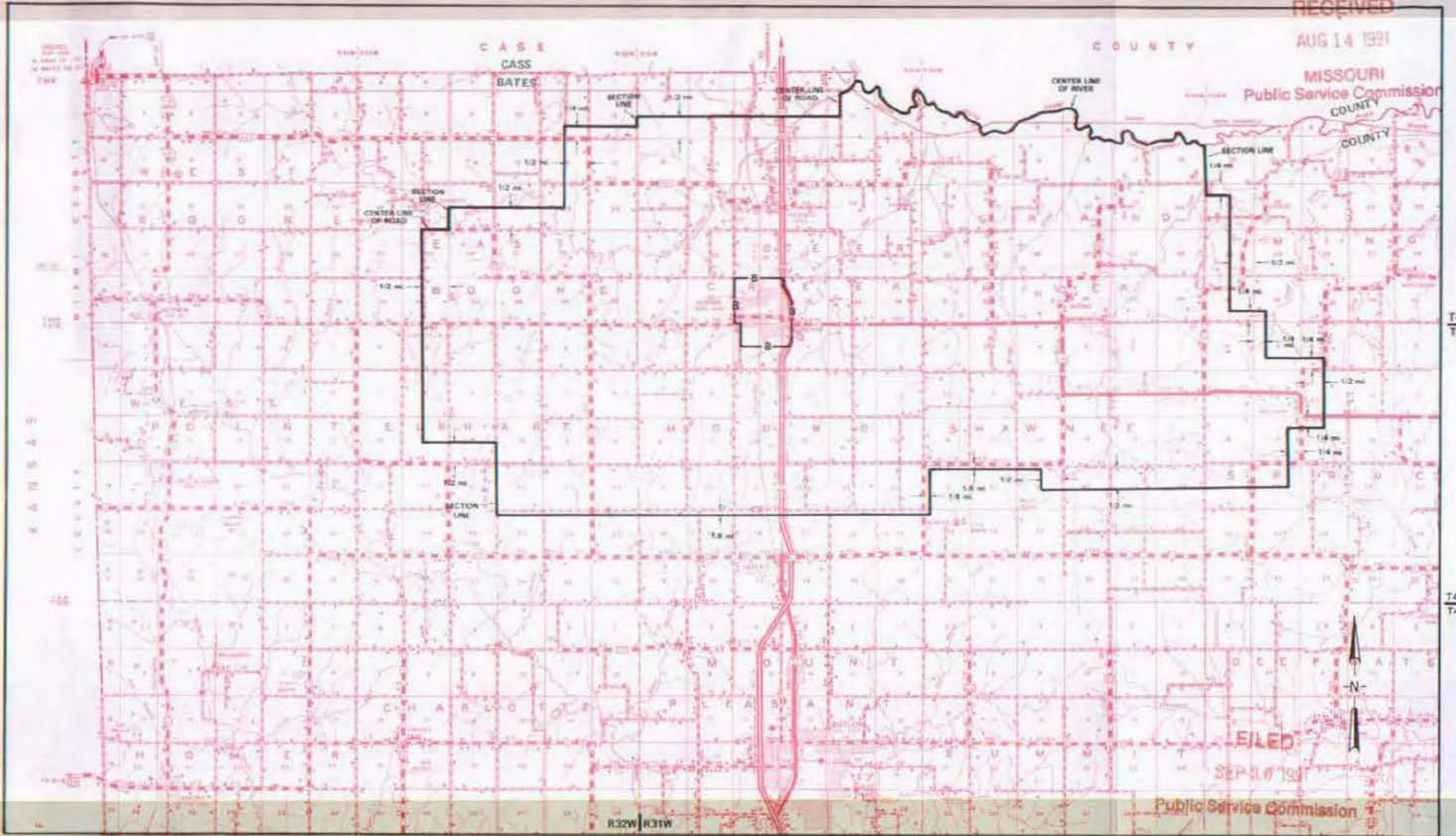
Adrian, Missouri

9th REVISED SHEET 3
REPLACING 8th REVISED SHEET 3

RECEIVED

AUG 14 1991

MISSOURI
Public Service Commission
COUNTY



Issued: AUG 23 1991

By R. D. BARRON, PRESIDENT, MISSOURI DIVISION
Southwestern Bell Telephone Company
St. Louis, Missouri

Effective: SEP 30 1991

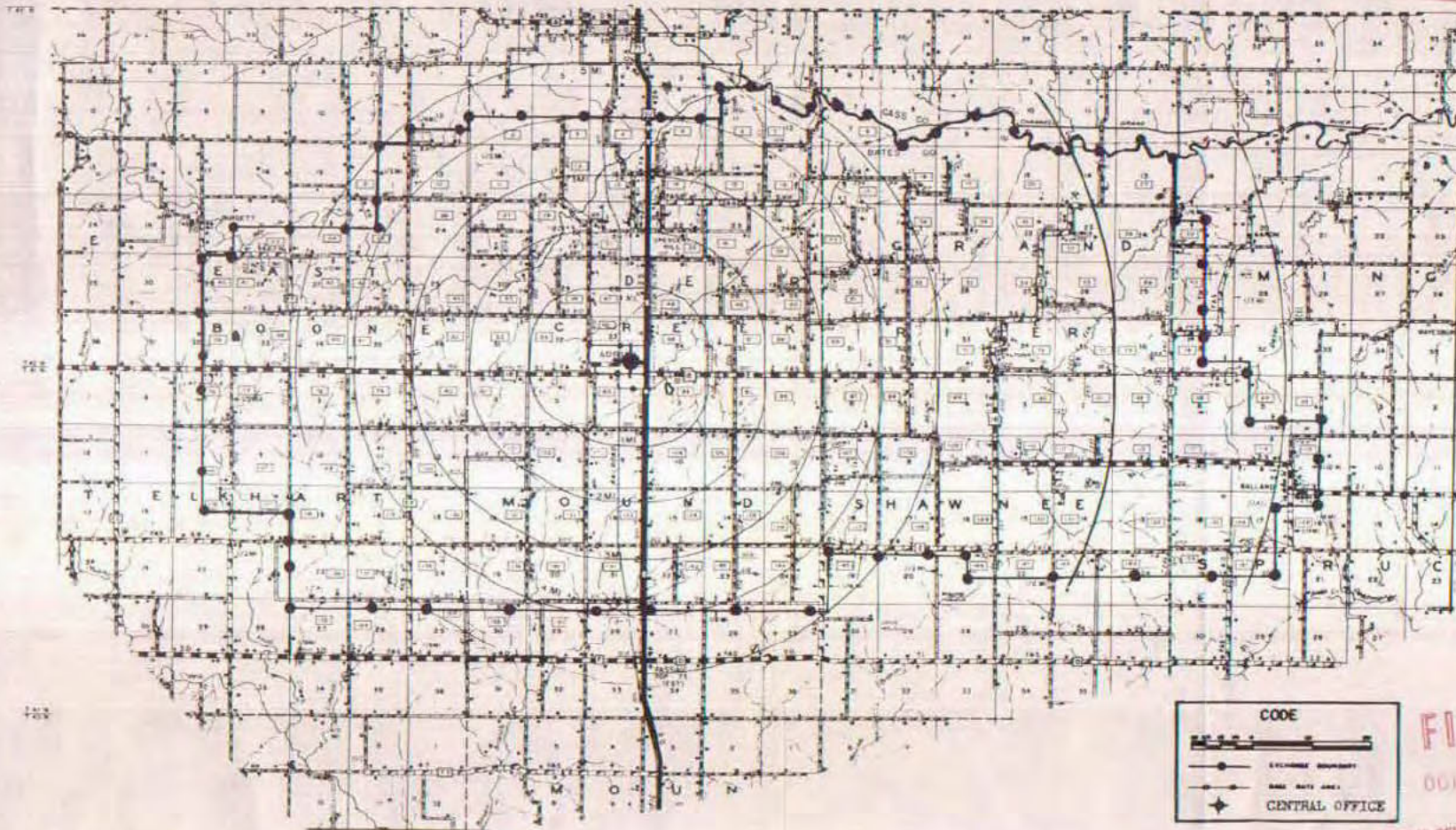
NO SUPPLEMENT TO THIS TARIFF WILL
BE ISSUED EXCEPT FOR THE PURPOSE OF
CANCELING THIS TARIFF.

P. S. C. Mo. No. 17
EXCHANGE AREA MAP

Adrian, Missouri
8th REVISED SHEET 3
REPLACING 7th REVISED SHEET 3

RECEIVED
SEP 18 1967
MISSOURI
Public Service Comm.

ADRIAN, MO.



CODE

EXCHANGE BOUNDARY

BASE RATE AREA

CENTRAL OFFICE

FILED
OCT 14 1967

PUBLIC SERVICE COMMISSION

Issued: September 14, 1967

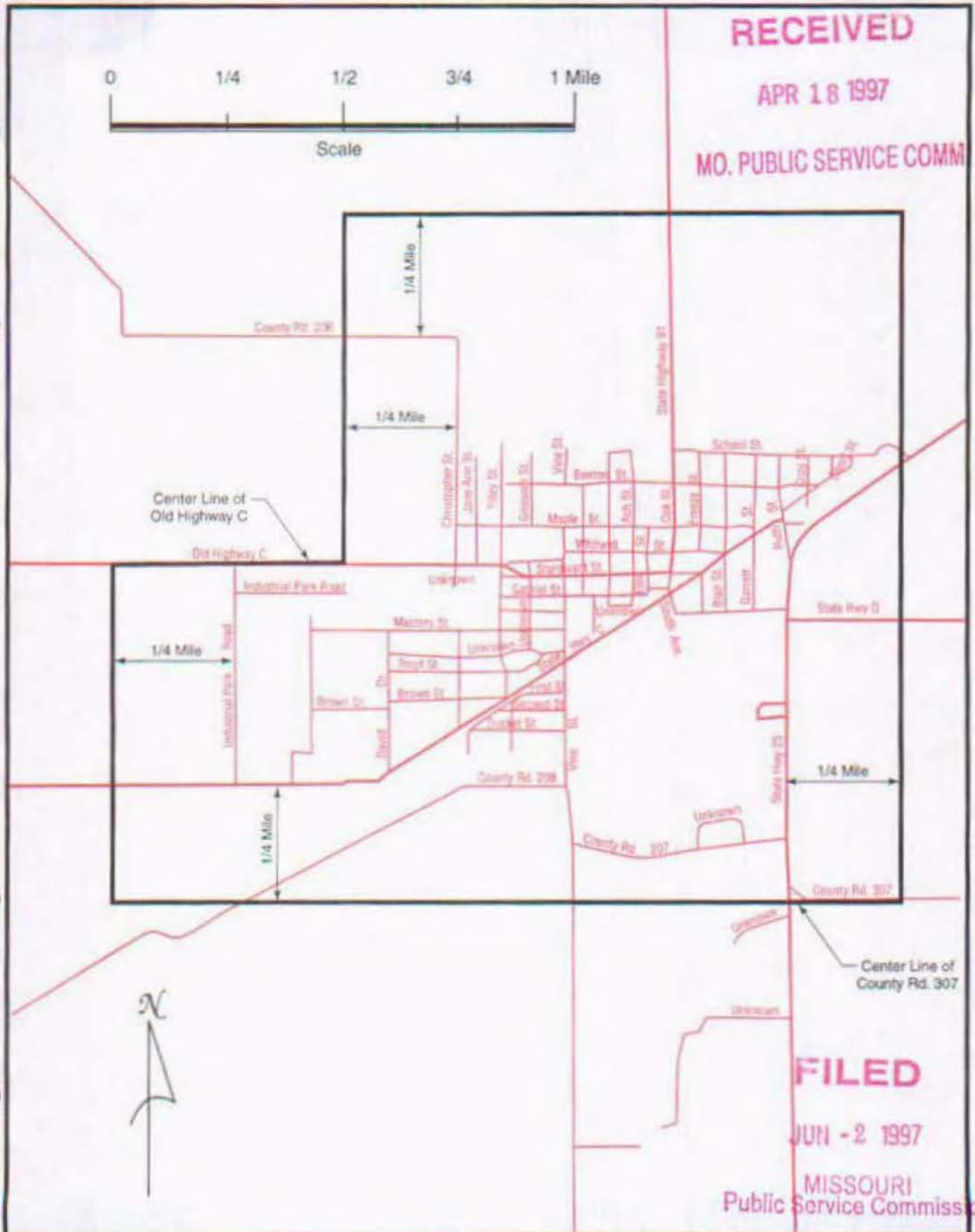
By R. R. SHOCKLEY, Vice President and General Manager
Southwestern Bell Telephone Company
St. Louis, Missouri

Effective: October 14, 1967

NO SUPPLEMENT TO THIS TARIFF WILL BE ISSUED EXCEPT FOR THE PURPOSE OF CANCELLING THIS TARIFF.

P. S. C. Mo. No. 17
BASE RATE AREA MAP

Advance, Missouri
2nd REVISED SHEET 1-4
REPLACING 1st REVISED SHEET 1-4



Issued: April 18, 1997

By Karen E. Jennings, President Missouri
Southwestern Bell Telephone Company
St. Louis, Missouri

Effective: June 2, 1997

NO SUPPLEMENT TO THIS TARIFF WILL BE ISSUED EXCEPT FOR THE PURPOSE OF CANCELING THIS TARIFF.

P. S. C. Mo. No. 17
EXCHANGE AREA MAP

RECEIVED

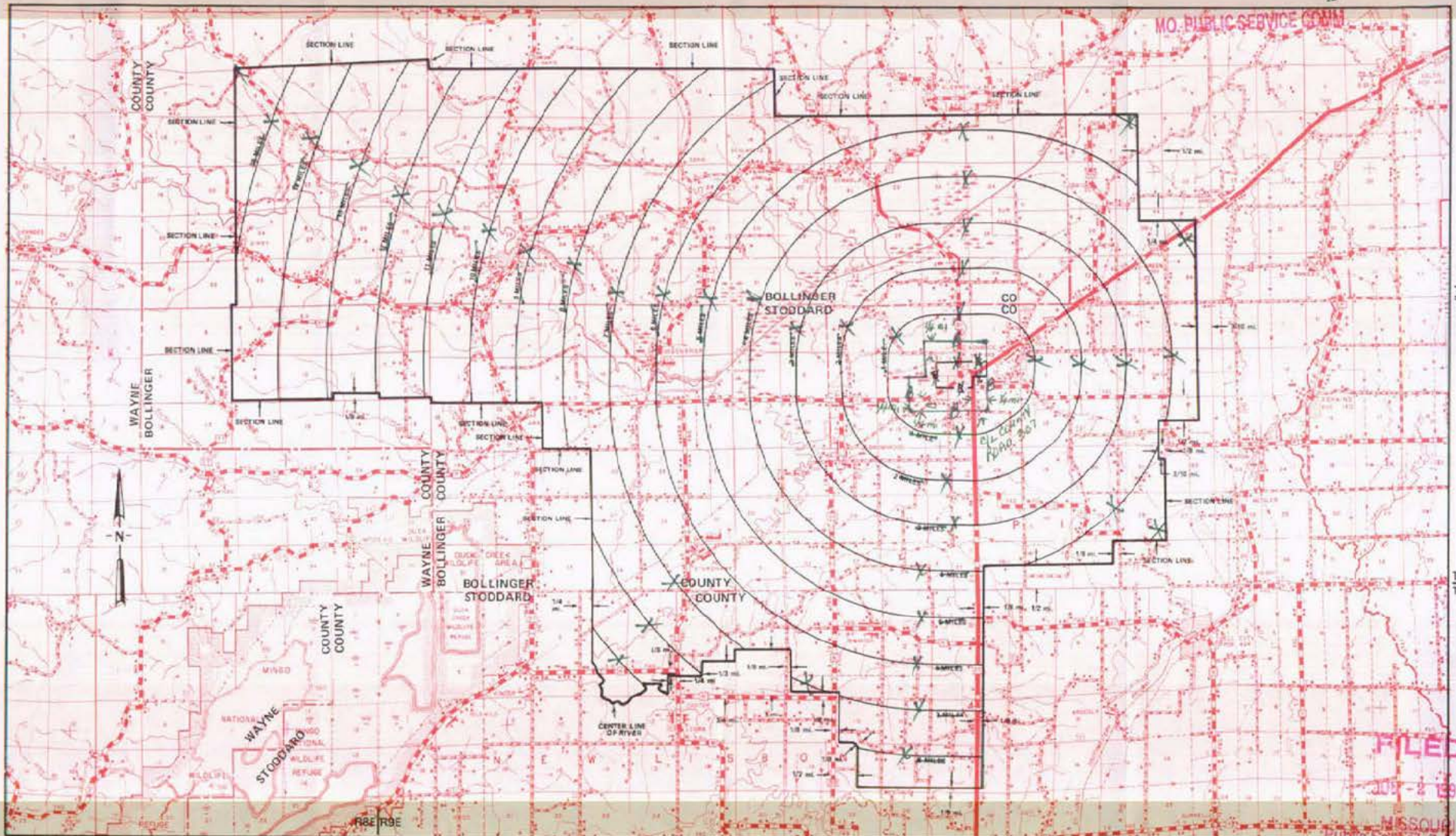
Advance, Missouri

APR 18 1997

11th REVISED SHEET 3
14th REVISED SHEET 3

10

MO. PUBLIC SERVICE COM.



R7E|R8E

By R. D. BARRON, President, Missouri DIVISION
Southwestern Bell Telephone Company
St. Louis, Missouri

R9E|R10E

R10E|R11E

R11E|R12E

Issued: APRIL 6 1997
April 18, 1997

Effective: MAY 7 1994

June 2, 1997

NO SUPPLEMENT TO THIS TARIFF WILL
BE ISSUED EXCEPT FOR THE PURPOSE OF
CANCELING THIS TARIFF.

P. S. C. Mo. No. 17
BASE RATE AREA MAP

Agency, Missouri

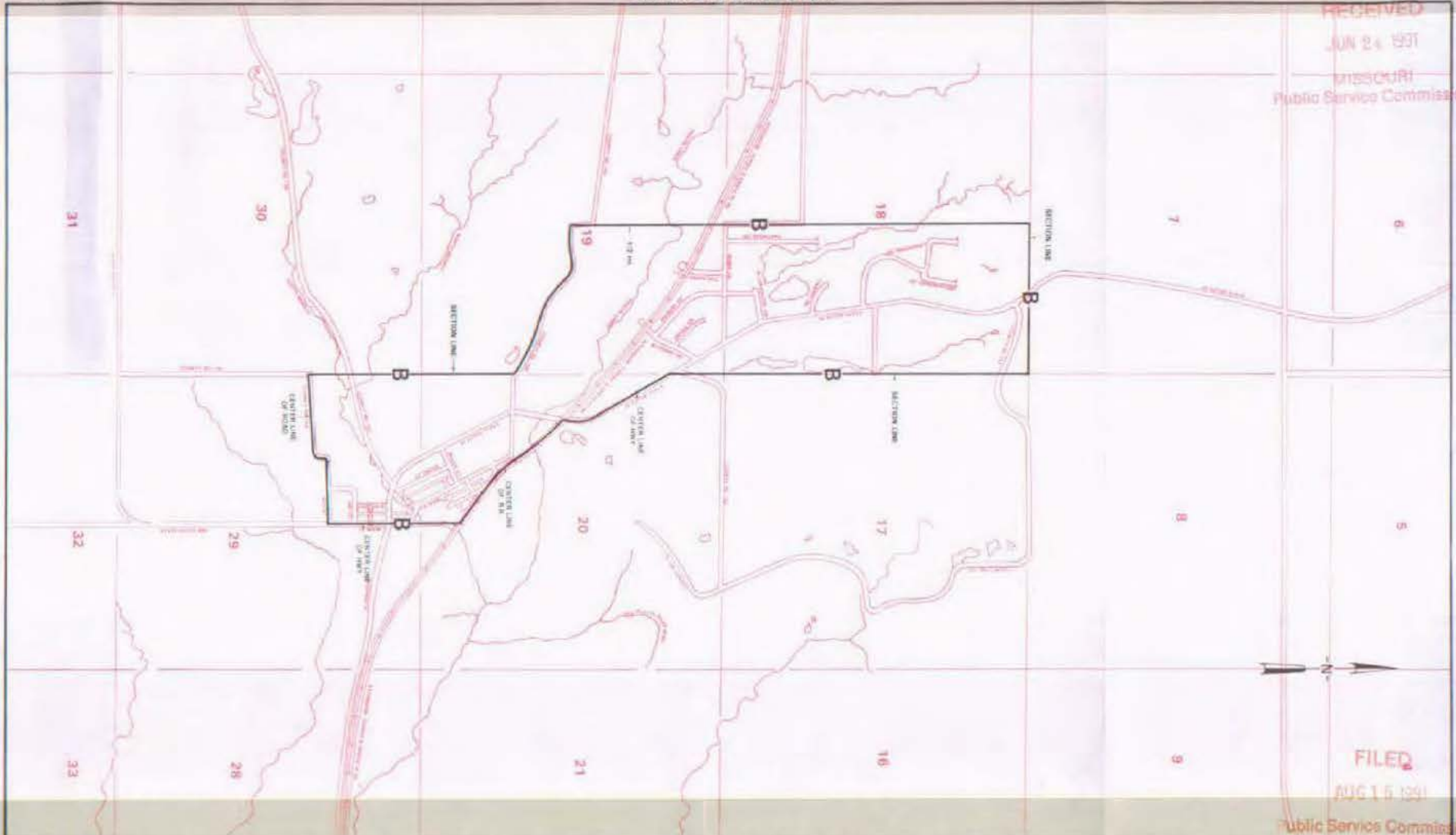
1st REVISED SHEET 2
REPLACING ORIGINAL SHEET 2

RECEIVED

JUN 24 1991

MISSOURI

Public Service Commission



FILED

AUG 15 1991

Public Service Commission

JUN 24 1991

Issued: _____

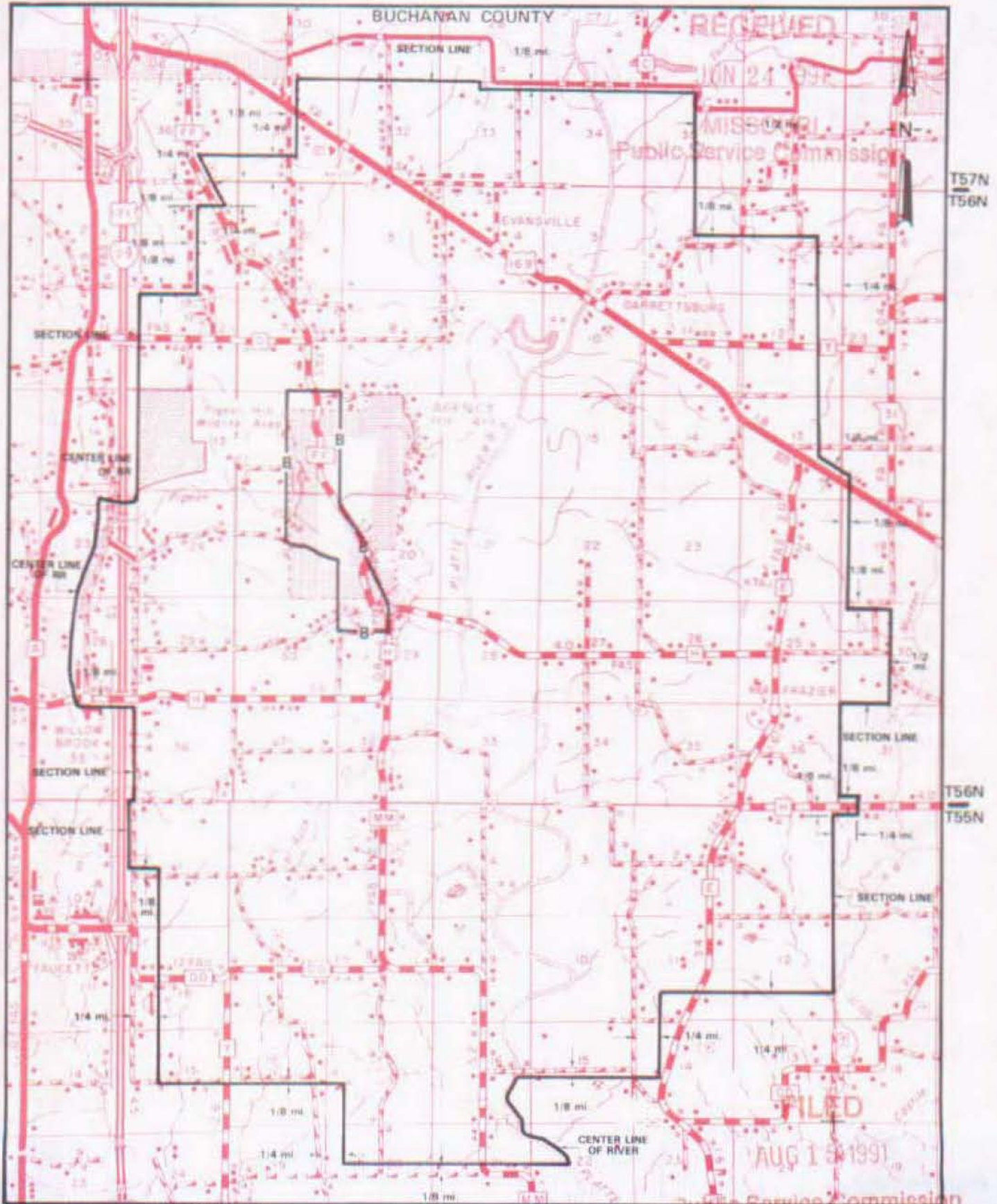
By R. O. BARRON, PRESIDENT, MISSOURI DIVISION
Southwestern Bell Telephone Company
St. Louis, Missouri

Effective: AUG 15 1991

NO SUPPLEMENT TO THIS TARIFF WILL BE ISSUED EXCEPT FOR THE PURPOSE OF CANCELING THIS TARIFF.

9th REVISED SHEET 3
REPLACING 8th REVISED SHEET 3

P. S. C. Mo. No. 17 EXCHANGE AREA MAP



Issued: JUN 24 1991 R35W | R34W

By R. D. BARRON, PRESIDENT, MISSOURI DIVISION
Southwestern Bell Telephone Company
St. Louis, Missouri

Effective: AUG 15 1991 R34W | R33W

SBC PSC MO #17
Altenburg – Frohna, Missouri
Original Sheet 2

Non-Scannable Map

(Is viewable in the Data Center
200 Madison Street, 1st Floor
Jefferson City MO)

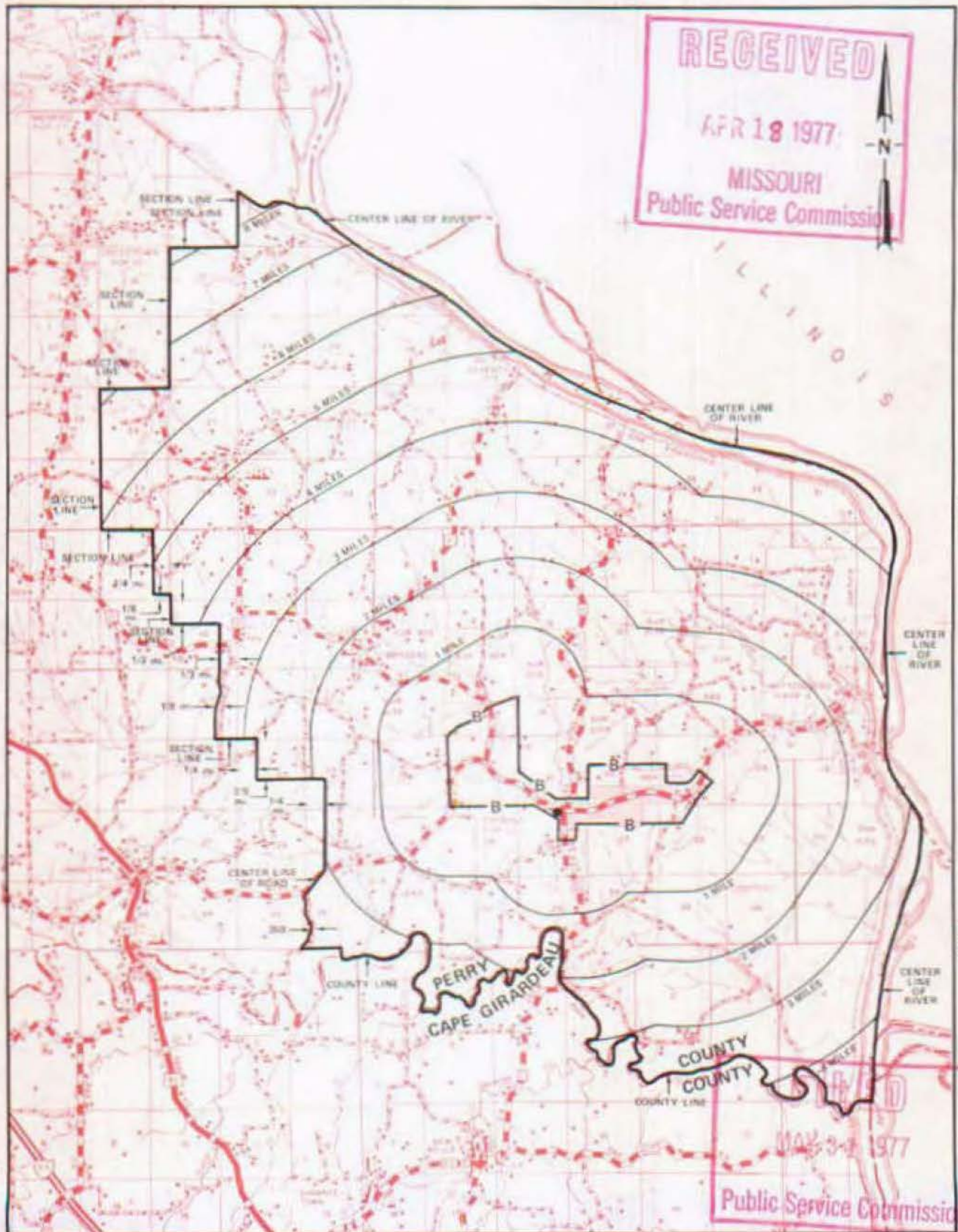
NO SUPPLEMENT TO THIS TARIFF WILL BE ISSUED EXCEPT FOR THE PURPOSE OF CANCELING THIS TARIFF.

P. S. C. Mo. No. 17

Altenburg-Frohna, Missouri

EXCHANGE AREA MAP

2nd REVISED SHEET 2
REPLACING 1st REVISED SHEET 2



T36N
T35N

T35N
T34N

T34N
T33N

R12E | R13E

R13E | R14E

By R. R. SHOCKLEY, Vice President, Missouri
Southwestern Bell Telephone Company

NO SUPPLEMENT TO THIS TARIFF WILL
BE ISSUED EXCEPT FOR THE PURPOSE
OF CANCELING THIS TARIFF.

P. S. C. Mo.-No. 17

ALTON, MISSOURI
1ST REVISED SHEET 2
CANCELING ORIGINAL SHEET 2

SOUTHWESTERN BELL TELEPHONE COMPANY
LOCAL EXCHANGE TARIFF

This exchange was sold to the South Missouri Telephone Company, effective August 1, 1961, and, therefore, all rates contained in Sheet 1-A of the Local Exchange Tariff and rate practices formerly authorized for this exchange are withdrawn.

RECEIVED
JUN 30 1961
MISSOURI
Public Service Comm.

FILED

AUG 1 - 1961

PUBLIC SERVICE COMMISSION

Issued under Order of the Public Service Commission Case No. 14208

Issued: July 1, 1961

Effective: August 1, 1961

By F. B. HUNT, Vice President and General Manager
St. Louis, Missouri

SOUTHWESTERN BELL TELEPHONE COMPANY
LOCAL EXCHANGE TARIFF

This exchange was sold to the South Missouri Telephone Company, effective August 1, 1961, and, therefore, all rates contained in Sheet 1-A of the Local Exchange Tariff and rate practices formerly authorized for this exchange are withdrawn.



FILED
AUG 1 - 1961

PUBLIC SERVICE COMMISSION

Issued under Order of the Public Service Commission Case No. 14208

Issued: July 1, 1961

Effective: August 1, 1961

By F. B. HUNT, Vice President and General Manager
St. Louis, Missouri

NO SUPPLEMENT TO THIS TARIFF WILL BE ISSUED EXCEPT FOR THE PURPOSE OF CANCELING THIS TARIFF.

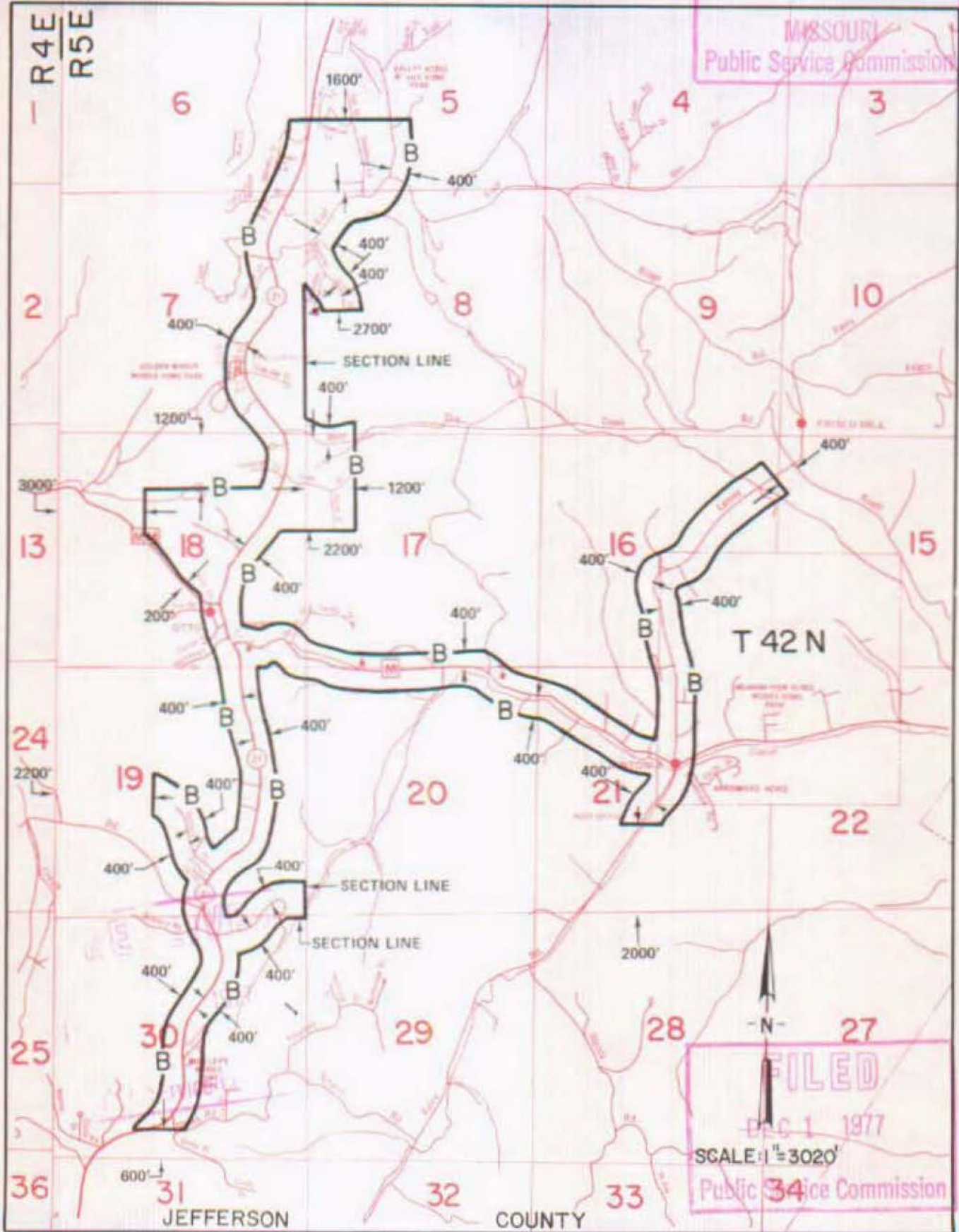
P. S. C. Mo. No. 17

BASE RATE AREA MAP

Antonia, Missouri
1st REVISED SHEET 2
REPLACING ORIGINAL SHEET 2

MAY 20 1977

MISSOURI
Public Service Commission



By R. R. SHOCKLEY, Vice President, Missouri
Southwestern Bell Telephone
St. Louis, Missouri

Issued: MAY 23 1977

Effective: DEC 1 1977

FILED
DEC 1 1977
Public Service Commission

NO SUPPLEMENT TO THIS TARIFF WILL BE ISSUED EXCEPT FOR THE PURPOSE OF CANCELING THIS TARIFF.

P. S. C. Mo. No. 17

Antonia, Missouri

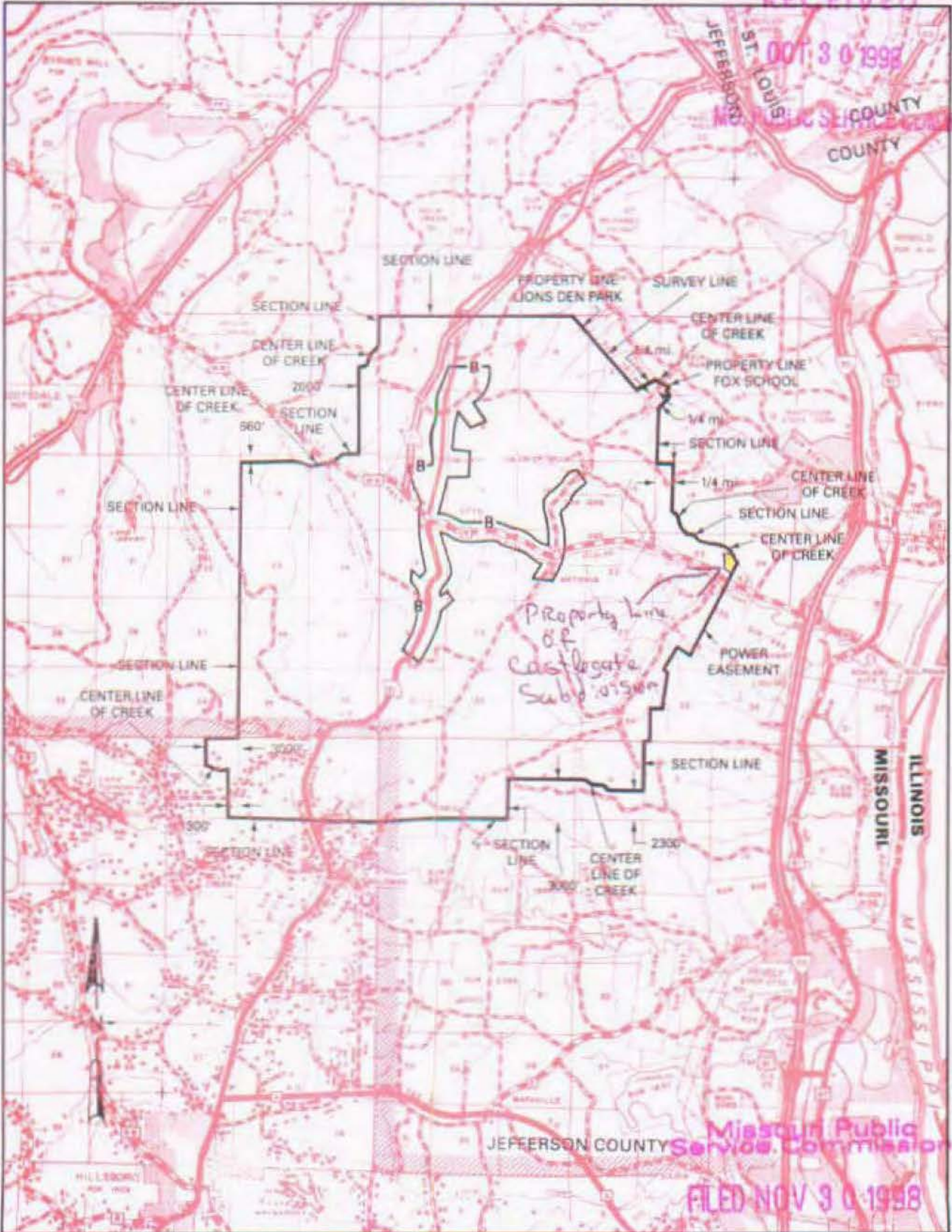
7th REVISED SHEET 3
REPLACING 6th REVISED SHEET 3

EXCHANGE AREA MAP

RECEIVED

OCT 30 1998

MISSOURI PUBLIC SERVICE COMMISSION
JEFFERSON COUNTY
ST. LOUIS COUNTY



T43N
T42N

T42N
T41N

T41N
T40N

OCT 30 1998

R4E | R5E
Priscilla Hill-Ardoin
 By HORACE WILKINS, JR. President - Missouri
 Southwestern Bell Telephone Company
 St. Louis, Missouri

R5E | R6E
 NOV 30 1998

Issued: ~~August 15, 1996~~

Effective: ~~September 15, 1996~~

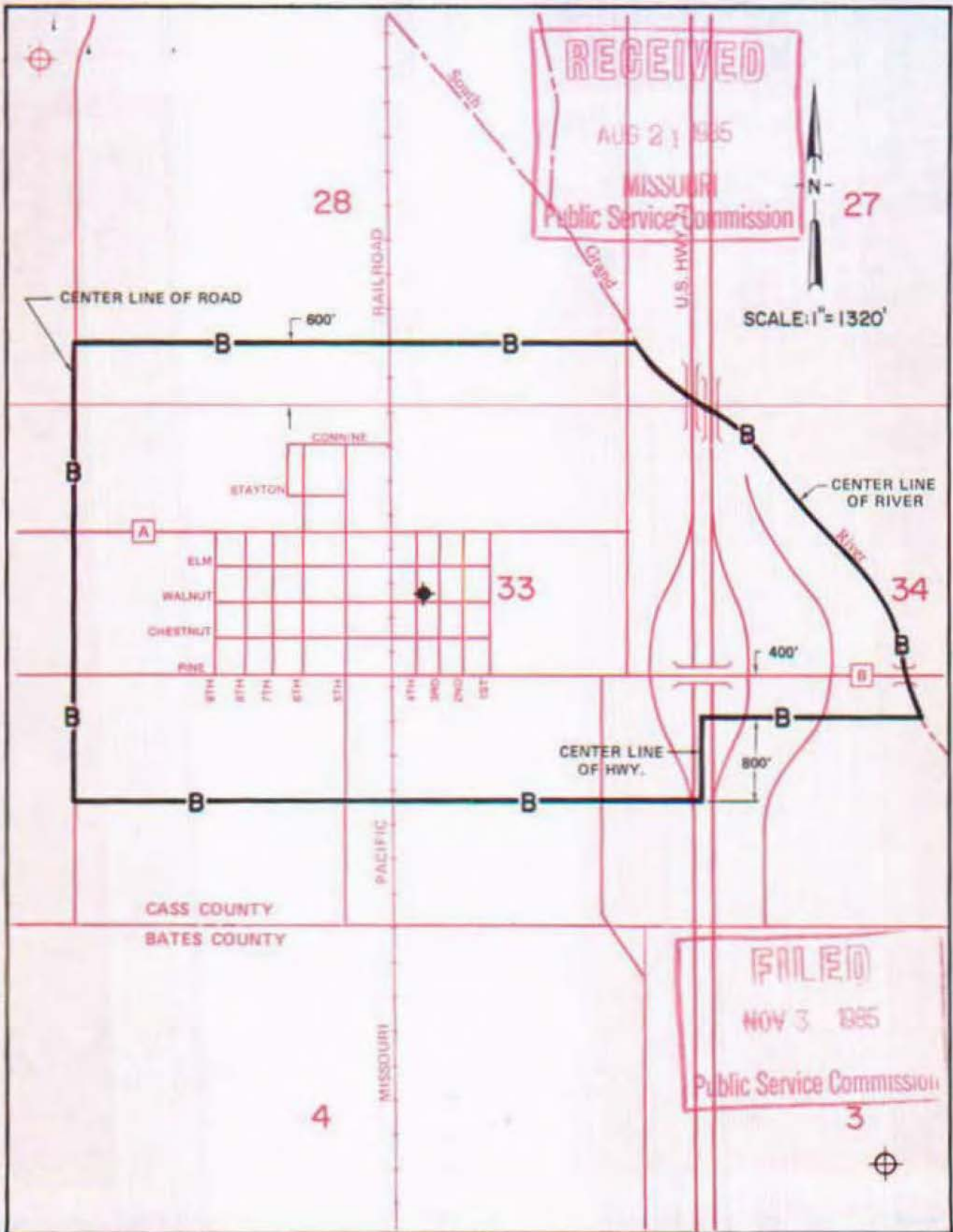
Missouri Public Service Commission
 FILED NOV 30 1998

NO SUPPLEMENT TO THIS TARIFF WILL BE ISSUED EXCEPT FOR THE PURPOSE OF CANCELING THIS TARIFF.

P. S. C. Mo. No. 17 BASE RATE AREA MAP

Archie, Missouri

1st REVISED SHEET 2
REPLACING ORIGINAL SHEET 2



By R. D. BARRON, PRESIDENT - MISSOURI DIVISION
Southwestern Bell Telephone Company

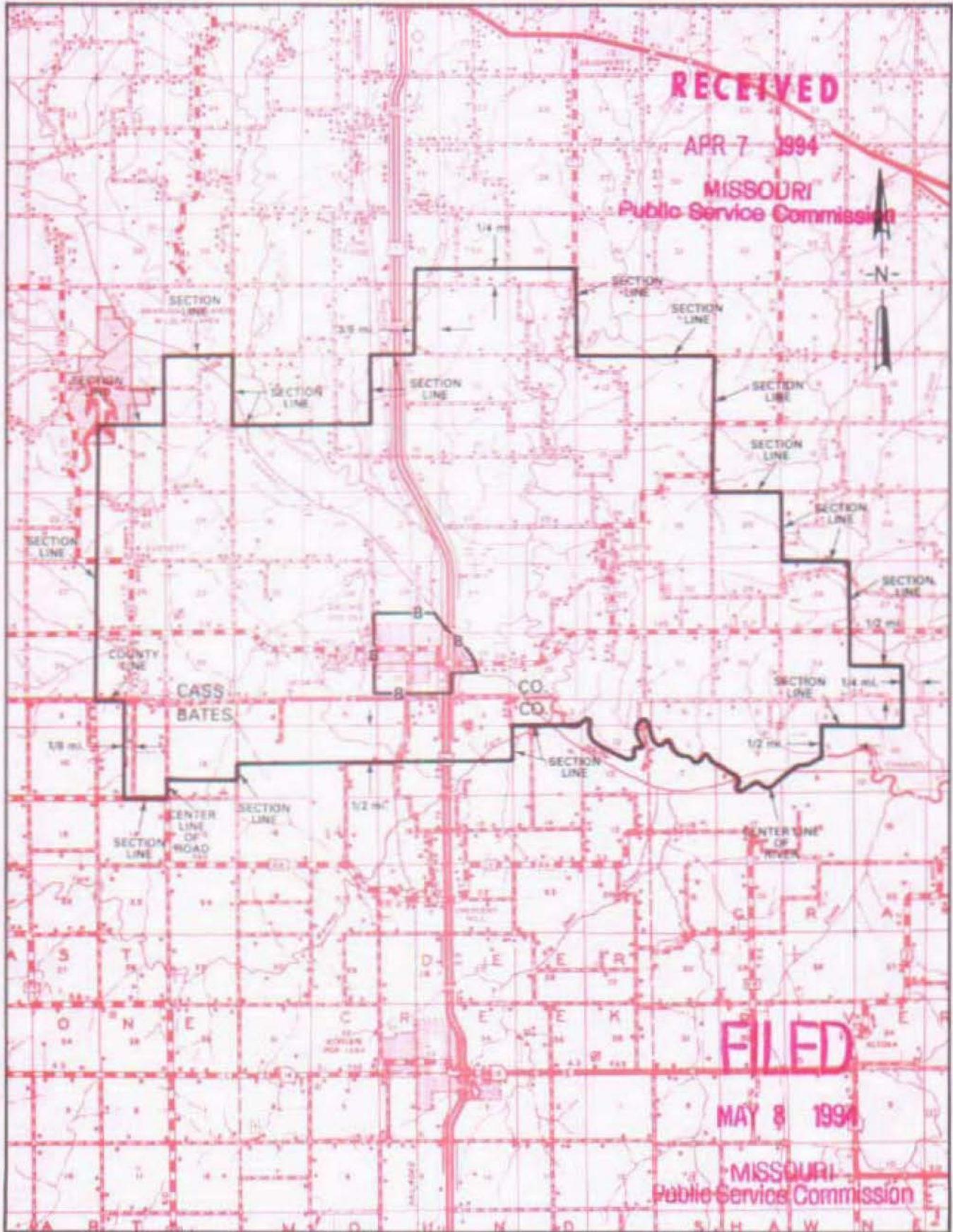
NO SUPPLEMENT TO THIS TARIFF WILL
BE ISSUED EXCEPT FOR THE PURPOSE OF
CANCELING THIS TARIFF.

P. S. C. Mo. No. 17

Archie, Missouri

8th REVISED SHEET 3
REPLACING 7th REVISED SHEET 3

EXCHANGE AREA MAP



R32W | R31W

R31W | R30W

By M. H. SCHULTEIS, Executive Director - External Affairs
Southwestern Bell Telephone Company
St. Louis, Missouri

Issued: April 8, 1994

Effective: May 8, 1994

SBC PSC MO #17
Argyle, Missouri
Original Sheet 2
Replacing Ozark Central
Telephone Company
P.S.C. Mo. No. 1
Original Sheet 2

Non-Scannable Map

(Is viewable in the Data Center
200 Madison Street, 1st Floor
Jefferson City MO)

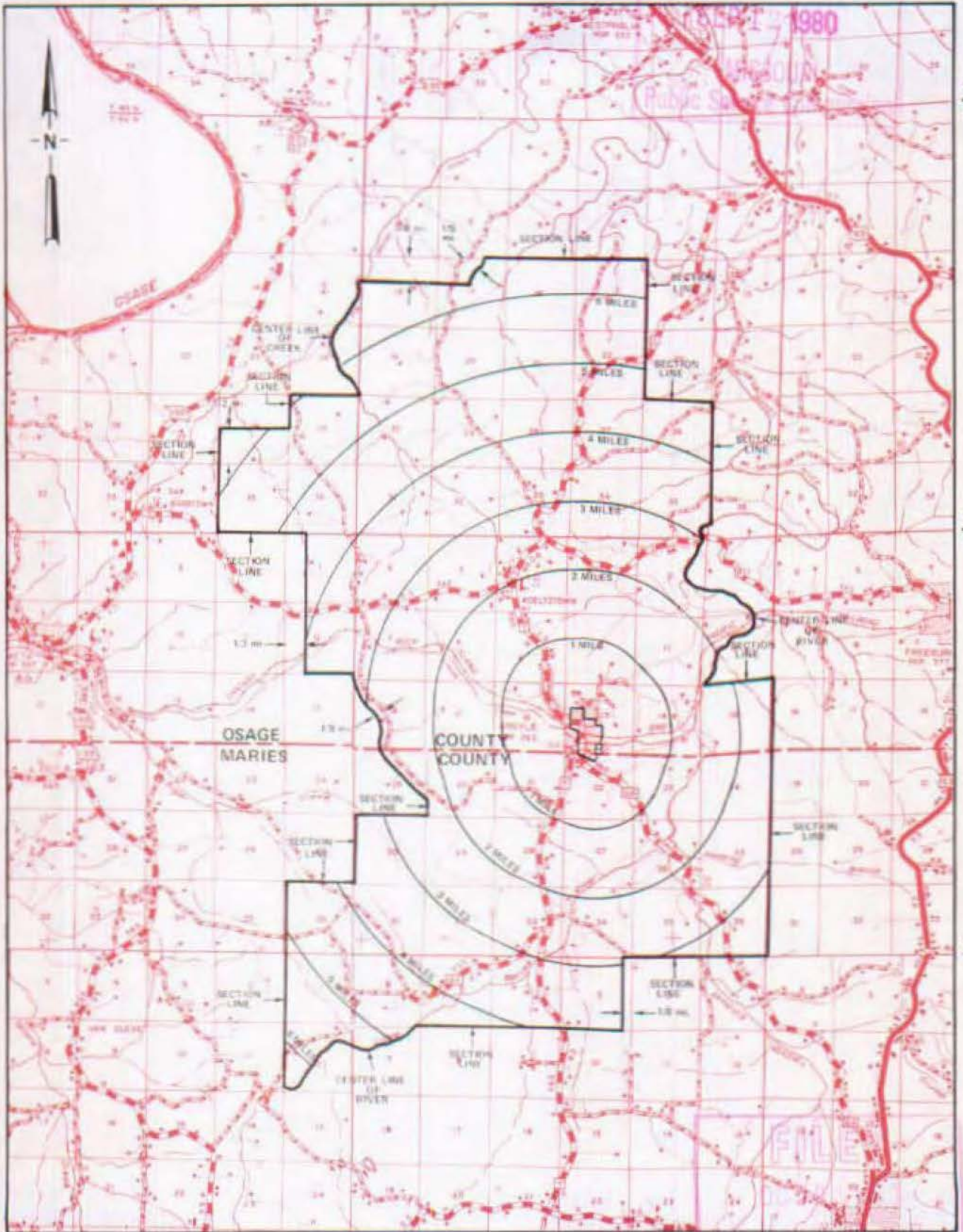
NO SUPPLEMENT TO THIS TARIFF WILL BE ISSUED EXCEPT FOR THE PURPOSE OF CANCELING THIS TARIFF.

P. S. C. Mo. No. 17

Argyle, Missouri

EXCHANGE AREA MAP

5th REVISED SHEET 3
REPLACING 4th REVISED SHEET 3



T43N
T42N

T42N
T41N

T41N
T40N

R11W | R10W

By R. R. SHOCKLEY, Vice President, Missouri
Southwestern Bell Telephone Company
St. Louis, Missouri

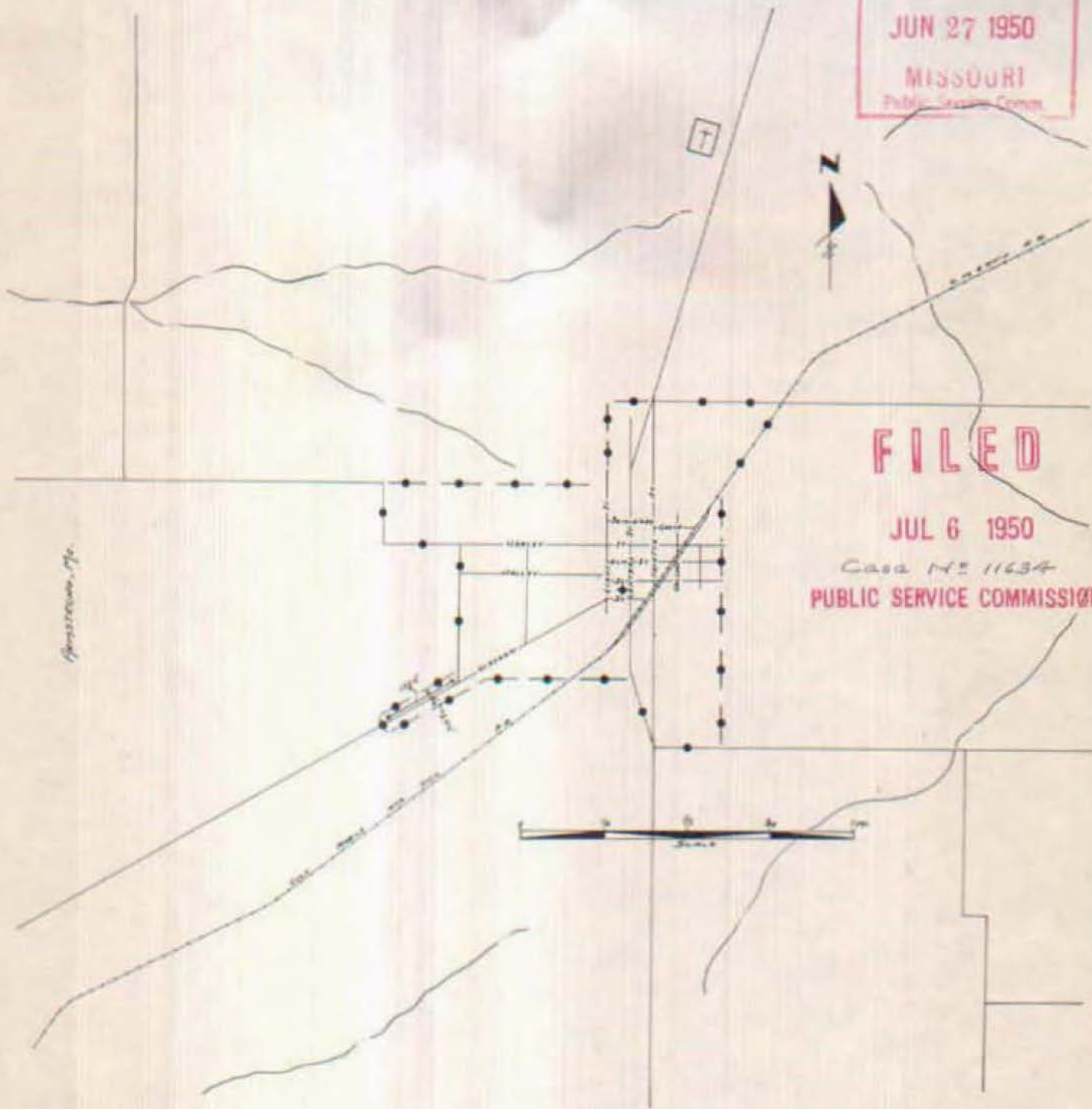
R10W | R9W
Public Service Commission

NO SUPPLEMENT TO THIS TARIFF WILL
BE ISSUED EXCEPT FOR THE PURPOSE OF
CANCELING THIS TARIFF.



Armstrong, Missouri
ORIGINAL SHEET 2
REPLACING ORIGINAL SHEET 1-A

P. S. C.-Mo. No. 17
BASE RATE AREA MAP

RECEIVED
JUN 27 1950
MISSOURI
Public Service Commission



FILED
JUL 6 1950
Case No 11634
PUBLIC SERVICE COMMISSION

CODE
BELL CENTRAL OFFICE: 
BASE RATE AREA LIMITS: 

Issued: June 27, 1950

Effective: July 6, 1950

By H. R. TOWLES, General Manager
Southwestern Bell Telephone Company
St. Louis, Missouri

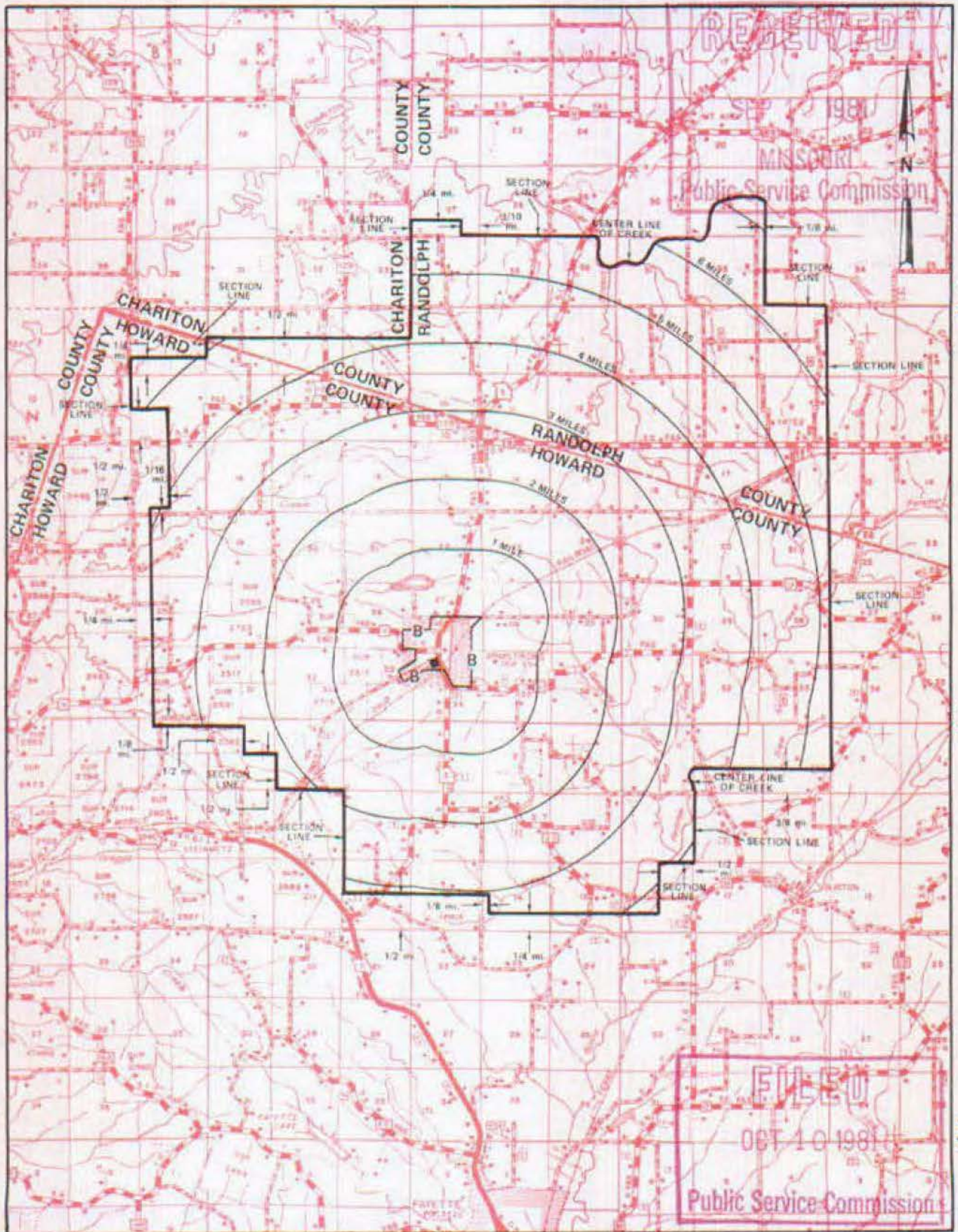
NO SUPPLEMENT TO THIS TARIFF WILL BE ISSUED EXCEPT FOR THE PURPOSE OF CANCELING THIS TARIFF.

P. S. C. Mo. No. 17

Armstrong, Missouri

EXCHANGE AREA MAP

8th REVISED SHEET 3
REPLACING 7th REVISED SHEET 3



R17W | R16W

R16W | R15W

By R. R. SHOCKLEY, Vice President, Missouri
Southwestern Bell Telephone Company

SBC PSC MO #17
Ash Grove, Missouri
Original Sheet 2
Replacing Western Light
& Telephone Company's
P.S.C. Mo. No. 6
Initial Rate Area Map
Greene County

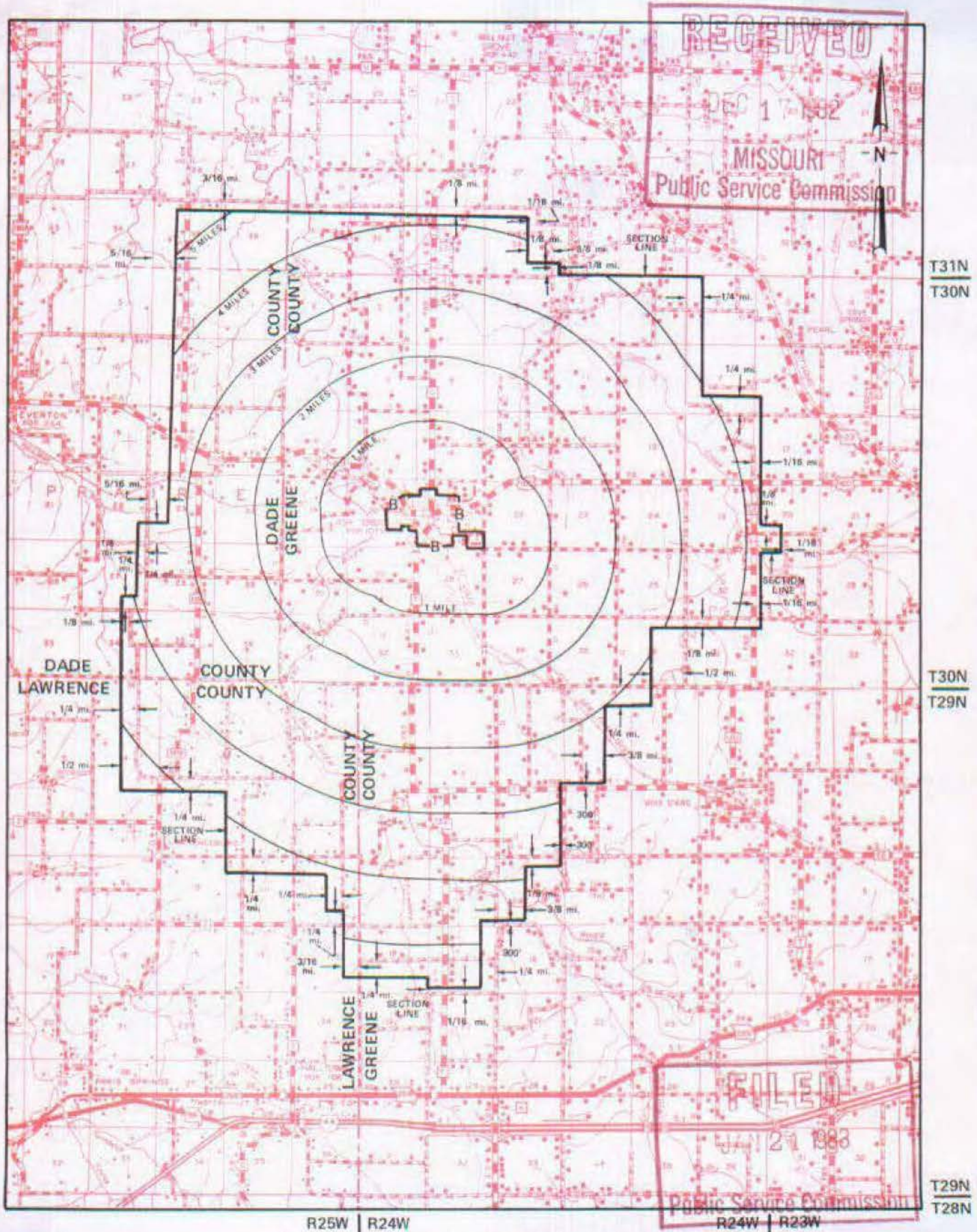
Non-Scannable Map

(Is viewable in the Data Center
200 Madison Street, 1st Floor
Jefferson City MO)

NO SUPPLEMENT TO THIS TARIFF WILL BE ISSUED EXCEPT FOR THE PURPOSE OF CANCELING THIS TARIFF.

P. S. C. Mo. No. 17 EXCHANGE AREA MAP

Ash Grove, Missouri
8th REVISED SHEET 3
REPLACING 7th REVISED SHEET 3



R25W | R24W

By R. D. BARRON, Vice President, Missouri
Southwestern Bell Telephone Company
St. Louis, Missouri

Issued: DECEMBER 20, 1982

Effective: JANUARY 21, 1983

LEGEND

N

CITY

EXCHANGE AREA BOUNDARY

BASE RATE AREA BOUNDARY

SCALE: 3/8" = 1 MILE

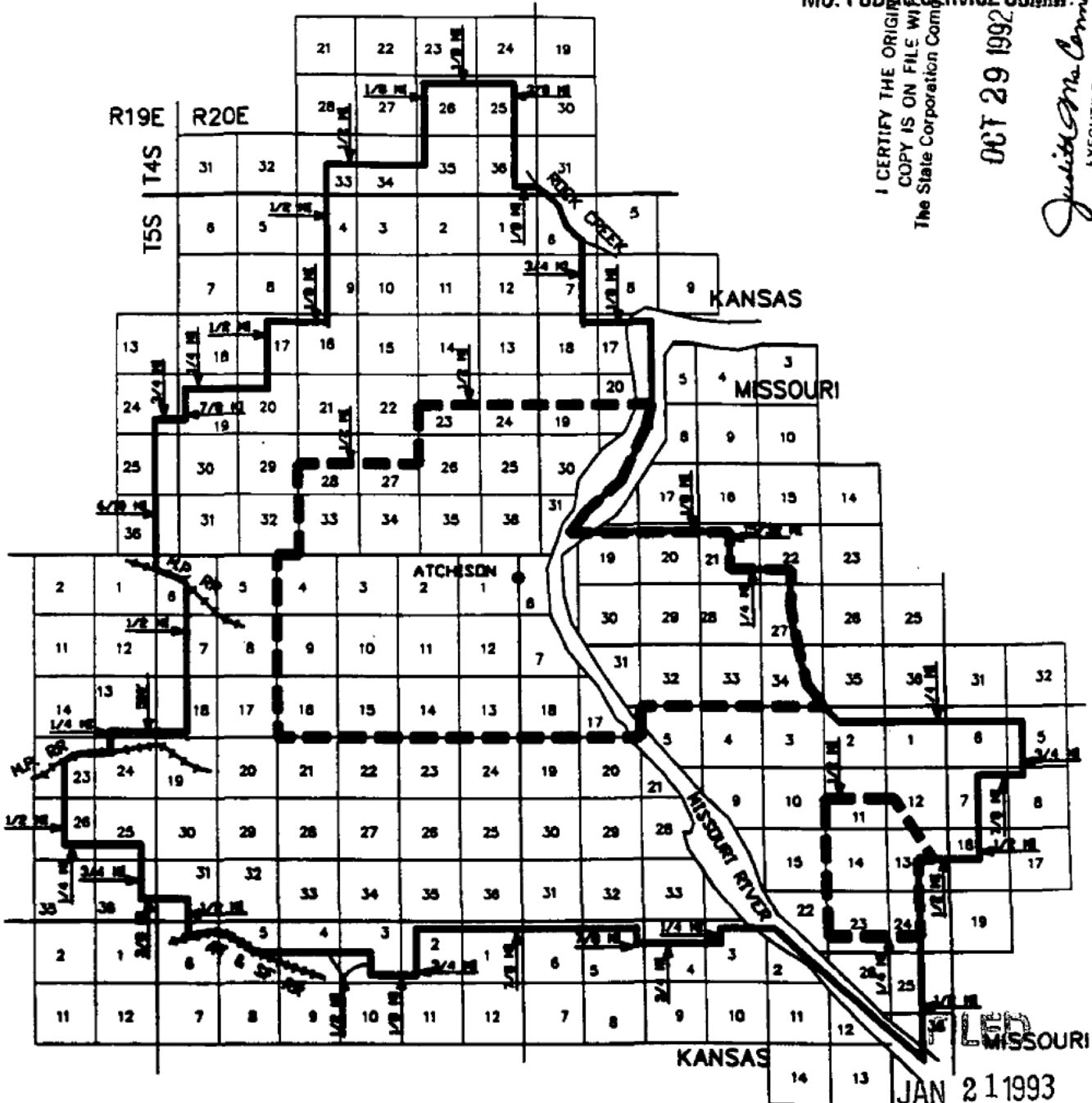
ATCHISON, KANSAS
 11th Revised Sheet 1-B
 Replacing 10th Revised Sheet 1-B

RECEIVED

DEC 4 1992

EXCHANGE AREA MAP

MO. PUBLIC SERVICE COMM.
 I CERTIFY THE ORIGINAL COPY IS ON FILE WITH The State Corporation Commission
 OCT 29 1992
Judith M. Connell
 EXECUTIVE DIRECTOR



FILED
 JAN 21 1993

MO. PUBLIC SERVICE COMM.
 JAN 22 1993

EFFECTIVE APR 8, 1992 THE ONLY GRADE OF SERVICE AVAILABLE IS ONE PARTY

ISSUED: MAR 18 1992 EFFECTIVE: APR 08 1992

BY: J.W. CALLAWAY, President - Kansas Division
 Southwestern Bell Telephone Company
 Topeka, Kansas

Commission Docket Number 166856

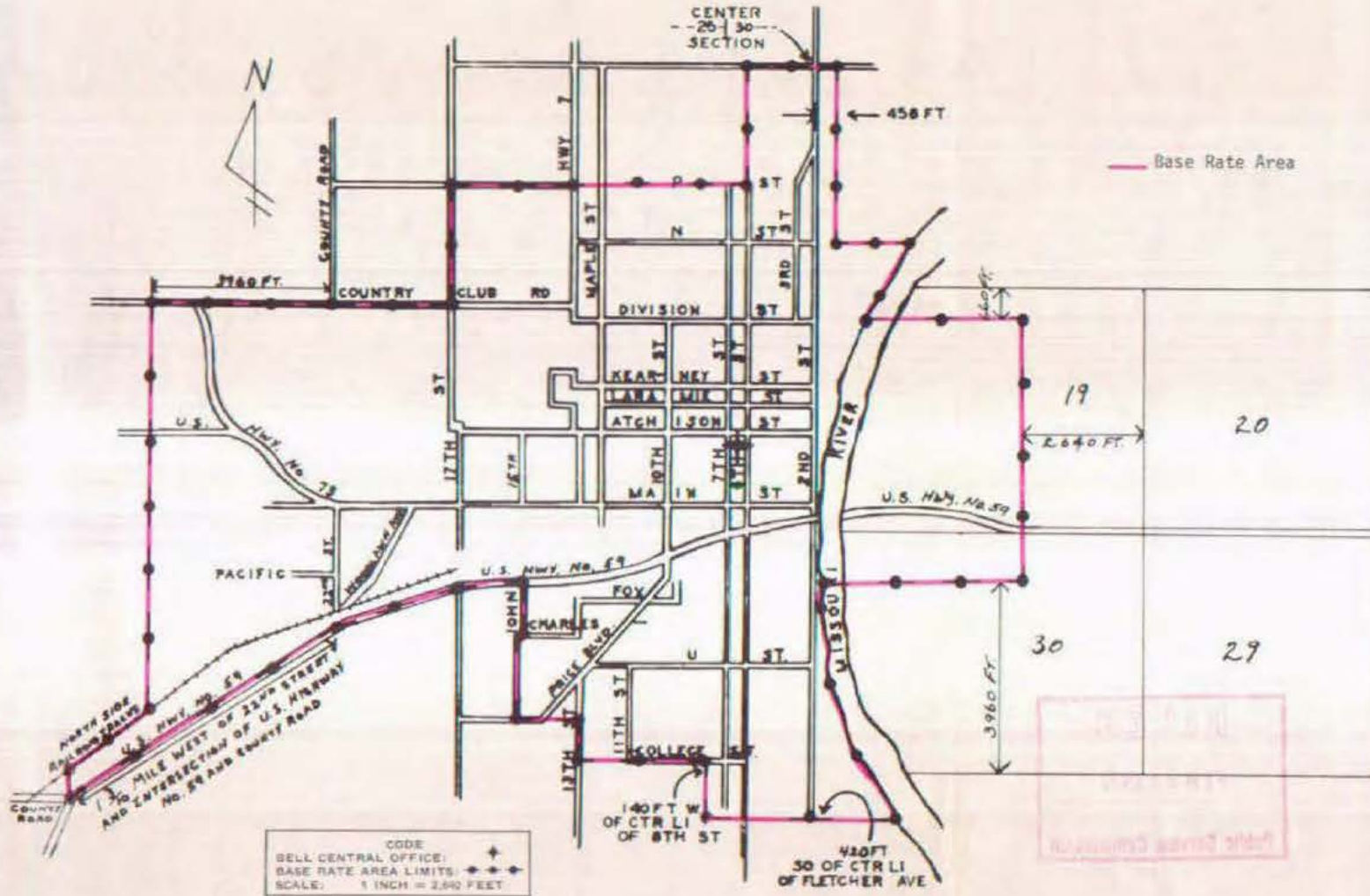
FILED MAR 19 1992

THE STATE CORPORATION COMMISSION OF KANSAS

NO SUPPLEMENT TO THIS TARIFF WILL BE ISSUED EXCEPT FOR THE PURPOSE OF CANCELLING THIS TARIFF.

Missouri Portion - Atchison, Kansas Exchange
ORIGINAL SHEET 2

P. S. C. Mo. No. 17
BASE RATE AREA MAP



Issued: JAN 28 1971

Effective: FEB 27 1971

By R. R. SHOCKLEY, Vice President, Missouri-Illinois
Southwestern Bell Telephone Company
St. Louis, Missouri

NO SUPPLEMENT TO THIS TARIFF WILL BE ISSUED EXCEPT FOR THE PURPOSE OF CANCELLING THIS TARIFF.

Missouri Portion - Atchison, Kansas Exchange

5th REVISED SHEET 3
REPLACING 4th REVISED SHEET 3

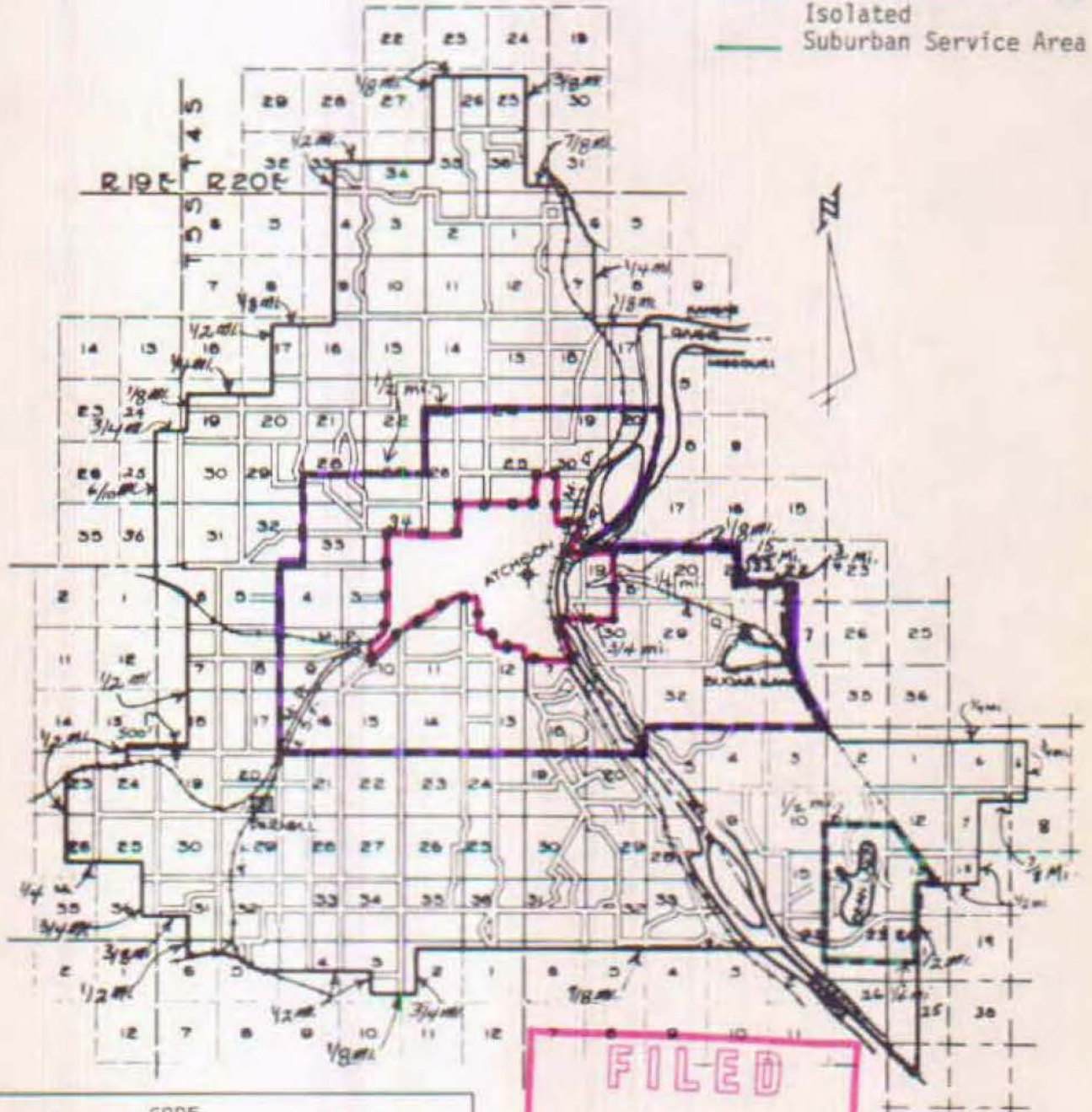
RECEIVED

JAN 25 1971


MISSOURI
Public Service Commission


P. S. C. Mo. No. 17
EXCHANGE AREA MAP


- Base Rate Area
- Suburban Service Area
- Isolated
- Suburban Service Area





CODE

BELL CENTRAL OFFICE: 

BASE RATE AREA LIMITS: 

SUBURBAN SERVICE AREA LIMITS: 

ISOLATED SUBURBAN SERVICE AREA LIMITS: 

EXCHANGE AREA LIMITS: 

SCALE: 3/8 INCH = 1 MILE

FILED

FEB 27 1971

Public Service Commission

Issued: JAN 28 1971

Effective: FEB 27 1971

By R. R. SHOCKLEY, Vice President, Missouri-Illinois
Southwestern Bell Telephone Company
St. Louis, Missouri