

SBC PSC MO #17  
Valley Park, Missouri  
14<sup>th</sup> Revised Sheet 2  
Replacing 13<sup>th</sup> Revised Sheet 2

# Non-Scannable Map

(Is viewable in the Data Center  
200 Madison Street, 1<sup>st</sup> Floor  
Jefferson City MO)

SBC PSC MO #17  
Versailles, Missouri  
Original Sheet 2  
Replacing Ozark Tel. Co.  
P.S.C. Mo. No. 1  
Original Sheet 2

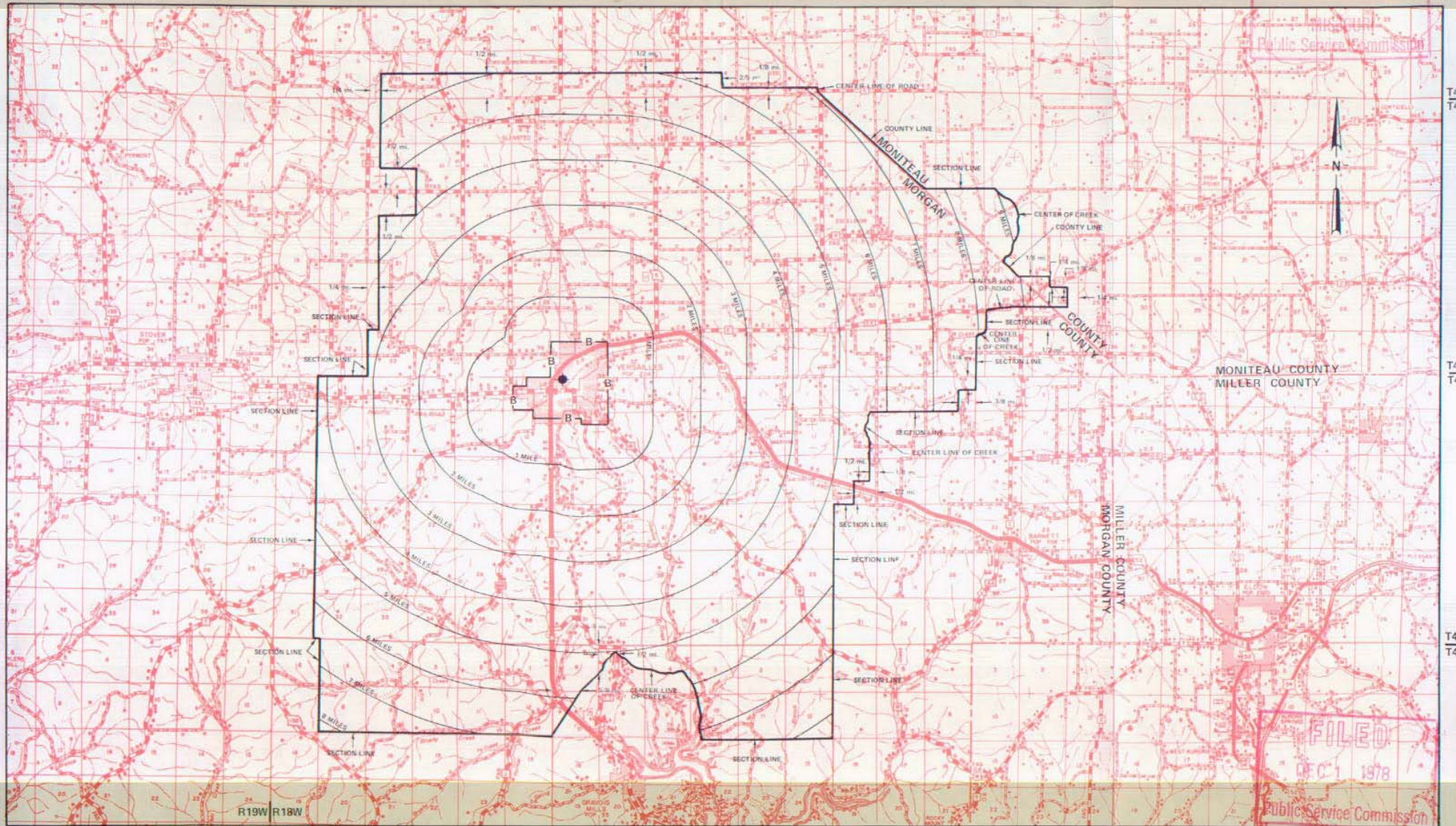
# Non-Scannable Map

(Is viewable in the Data Center  
200 Madison Street, 1<sup>st</sup> Floor  
Jefferson City MO)

NO SUPPLEMENT TO THIS TARIFF WILL BE ISSUED EXCEPT FOR THE PURPOSE OF CANCELING THIS TARIFF.

P. S. C. Mo. No. 17  
EXCHANGE AREA MAP

RECEIVED  
Versailles, Missouri  
15th REVISED SHEET 3  
REPLACING 14th REVISED SHEET 3  
FEB 14 1977  
Public Service Commission



By R. R. SHOCKLEY, Vice President, Missouri  
Southwestern Bell Telephone Company  
St. Louis, Missouri

R18W/R17W

R17W/R16W

R16W/R15W

R15W/R14W

Issued: February 15, 1977

FILED  
DEC 1 1978  
Public Service Commission

Effective: DEC 1 1978

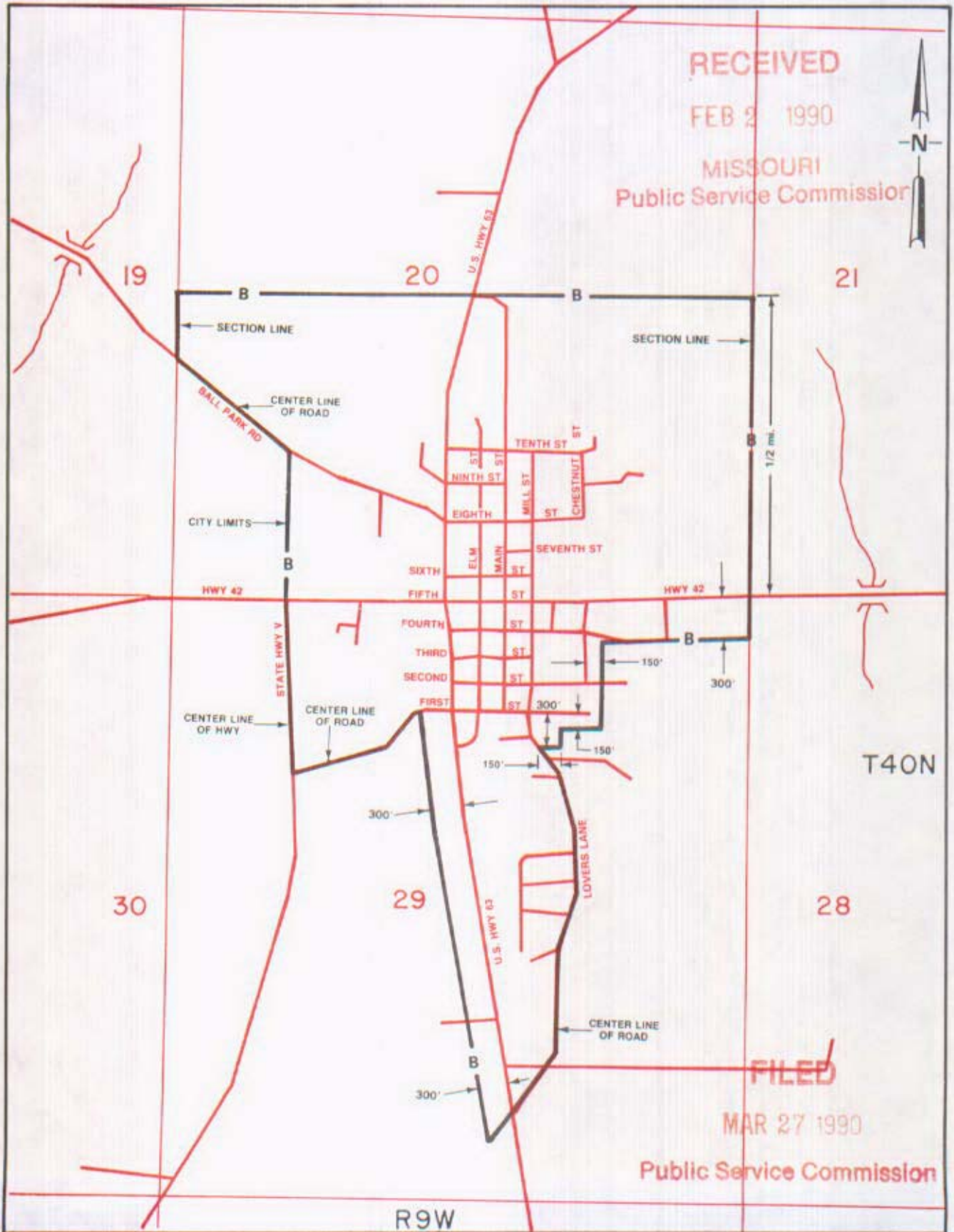


NO SUPPLEMENT TO THIS TARIFF WILL BE ISSUED EXCEPT FOR THE PURPOSE OF CANCELING THIS TARIFF.

Vienna, Missouri

# P. S. C. Mo. No. 17 BASE RATE AREA MAP

1st REVISED SHEET 2  
REPLACING ORIGINAL SHEET 2



**FEB 2 1990**

By R. D. BARRON, PRESIDENT, MISSOURI DIVISION  
Southwestern Bell Telephone Company  
St. Louis, Missouri

**MAR 27 1990**

Issued: \_\_\_\_\_

Effective: \_\_\_\_\_

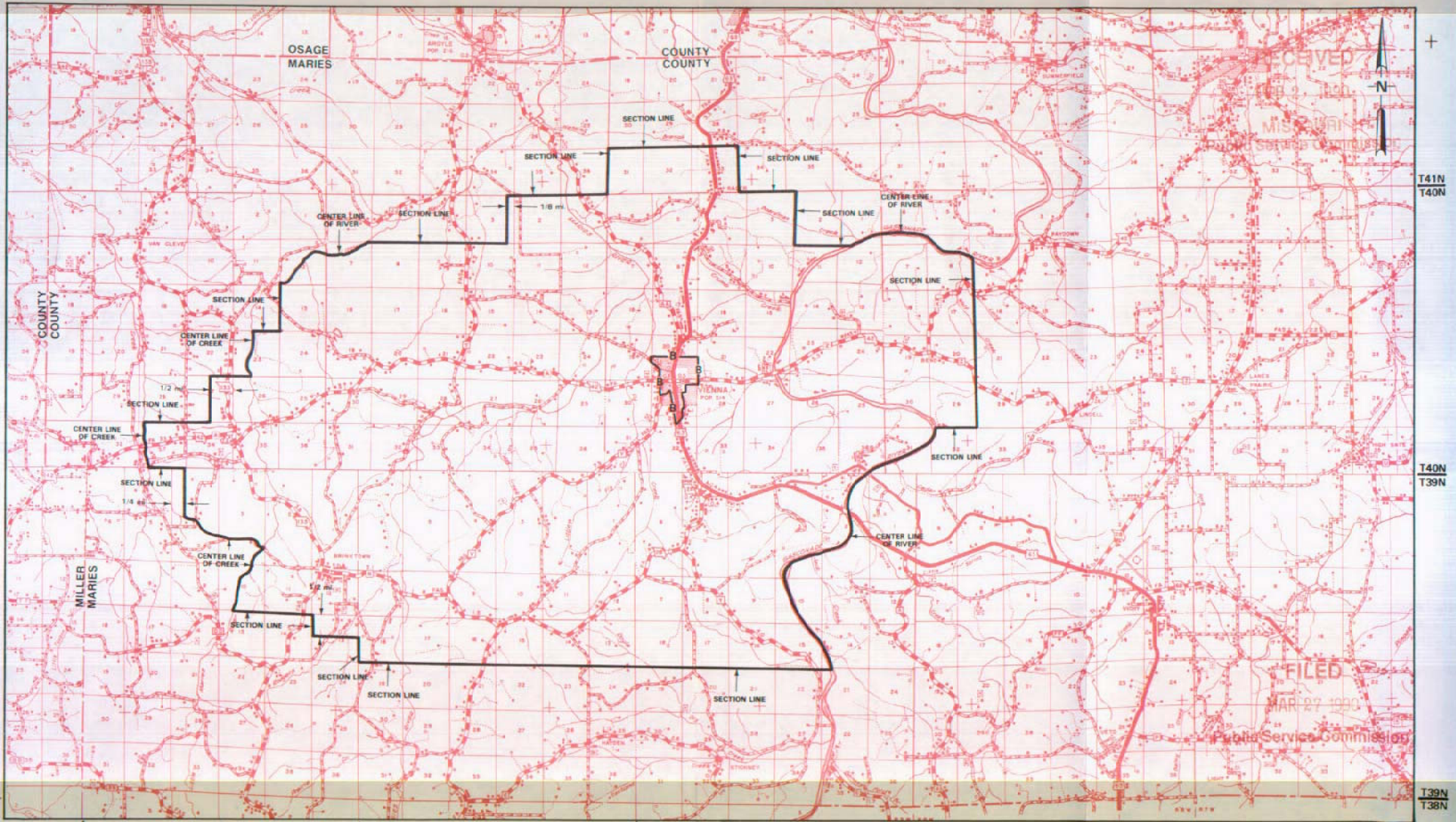


NO SUPPLEMENT TO THIS TARIFF WILL BE ISSUED EXCEPT FOR THE PURPOSE OF CANCELING THIS TARIFF.

### P. S. C. Mo. No. 17 EXCHANGE AREA MAP

Vienna, Missouri

7th REVISED SHEET 3  
REPLACING 6th REVISED SHEET 3



R12W | R11W  
**FEB 27 1990**  
Issued:

R11W | R10W  
R10W | R9W  
R9W | R8W  
R8W | R7W  
By R. D. BARRON, PRESIDENT, MISSOURI DIVISION  
Southwestern Bell Telephone Company  
St. Louis, Missouri

**MAR 27 1990**  
Effective:



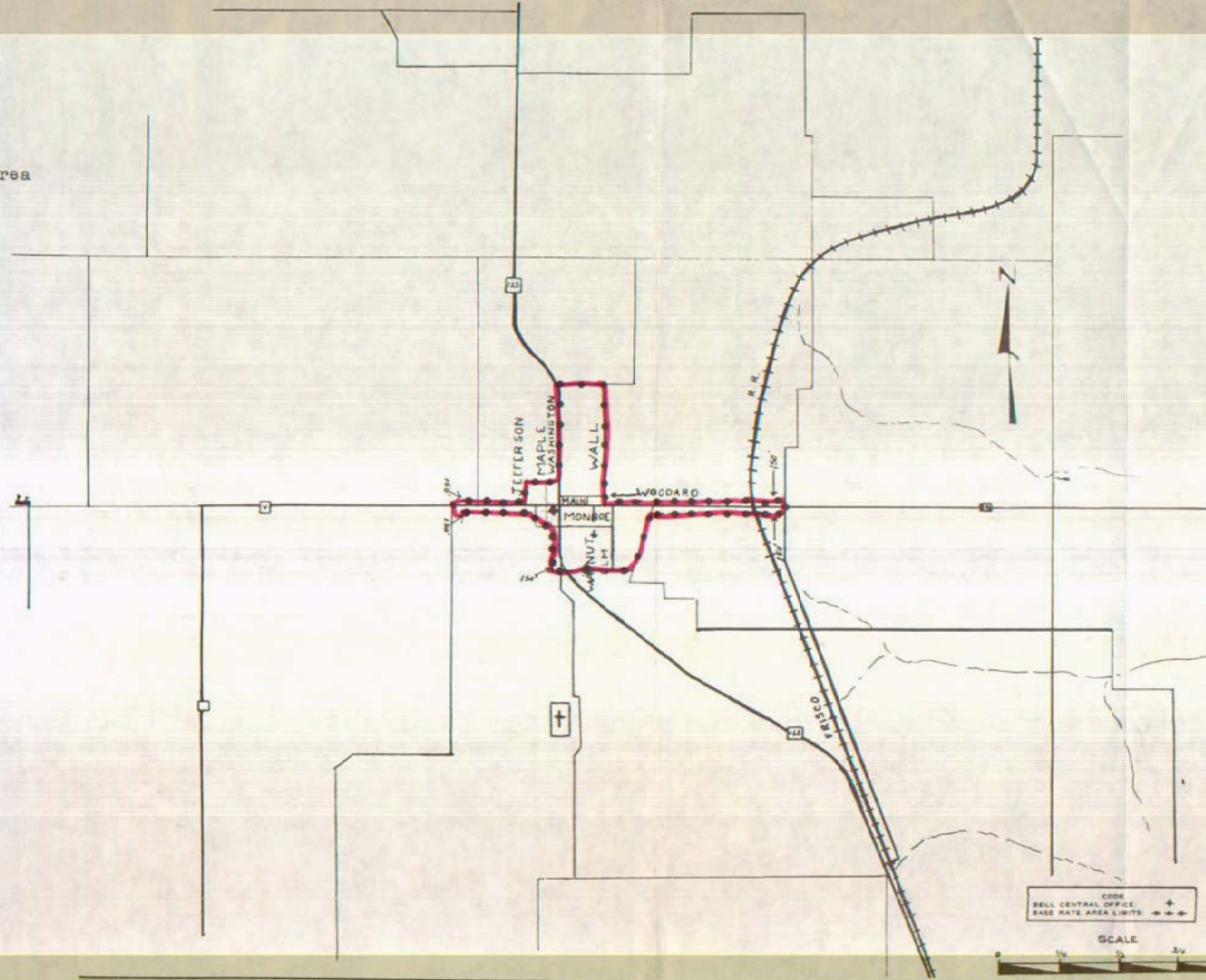
NO SUPPLEMENT TO THIS TARIFF WILL  
BE ISSUED EXCEPT FOR THE PURPOSE OF  
CANCELING THIS TARIFF.

P. S. C. Mo. No. 17  
BASE RATE AREA MAP

Walnut Grove, Missouri  
1st REVISED SHEET 2  
REPLACING ORIGINAL SHEET 2

RECEIVED  
JUL 23 1974  
MISSOURI  
Public Service Commission

Base Rate Area



FILED  
SEP 3 1974  
Public Service Commission

Issued: August 2, 1974

By R. R. SHOCKLEY, Vice President, Missouri-Illinois  
Southwestern Bell Telephone Company  
St. Louis, Missouri

Effective: September 3, 1974