

CANCELLED
June 29, 2007
TO-2002-185
Missouri Public
Service Commission

NO SUPPLEMENT TO THIS TARIFF WILL
BE ISSUED EXCEPT FOR THE PURPOSE OF
CANCELING THIS TARIFF.

P. S. C. Mo. No. 17
BASE RATE AREA MAP

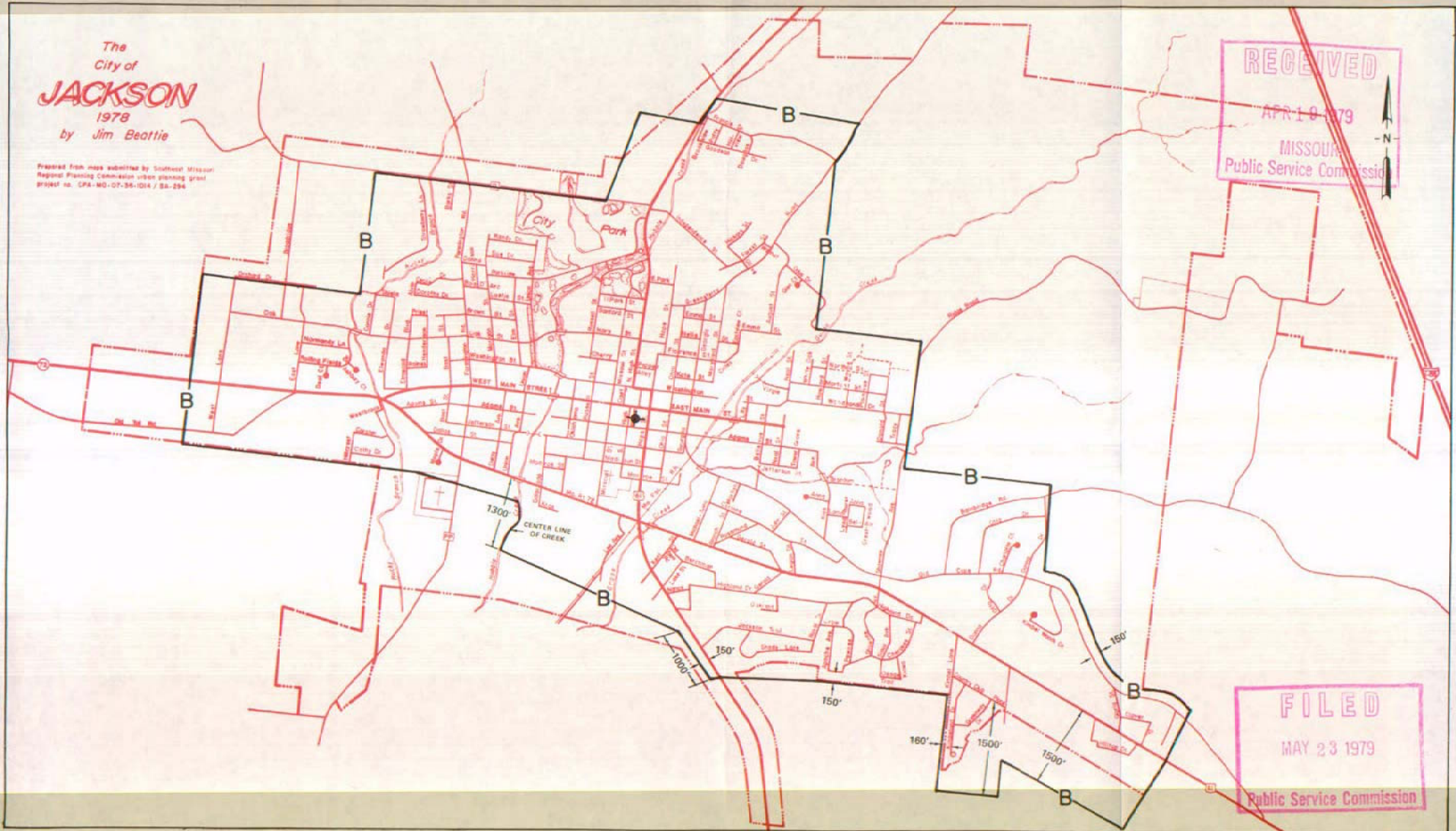
Jackson, Missouri

2nd REVISED SHEET 2
REPLACING 1st REVISED SHEET 2

The
City of
JACKSON
1978
by Jim Beattie

Prepared from maps submitted by Southwest Missouri
Regional Planning Commission urban planning grant
Project no. SPM-MO-07-34-1014 / SA-294

RECEIVED
APR 19 1979
MISSOURI
Public Service Commission



FILED
MAY 23 1979
Public Service Commission

By R. R. SHOCKLEY, Vice President, Missouri
Southwestern Bell Telephone Company
St. Louis, Missouri

Issued: APRIL 23, 1979

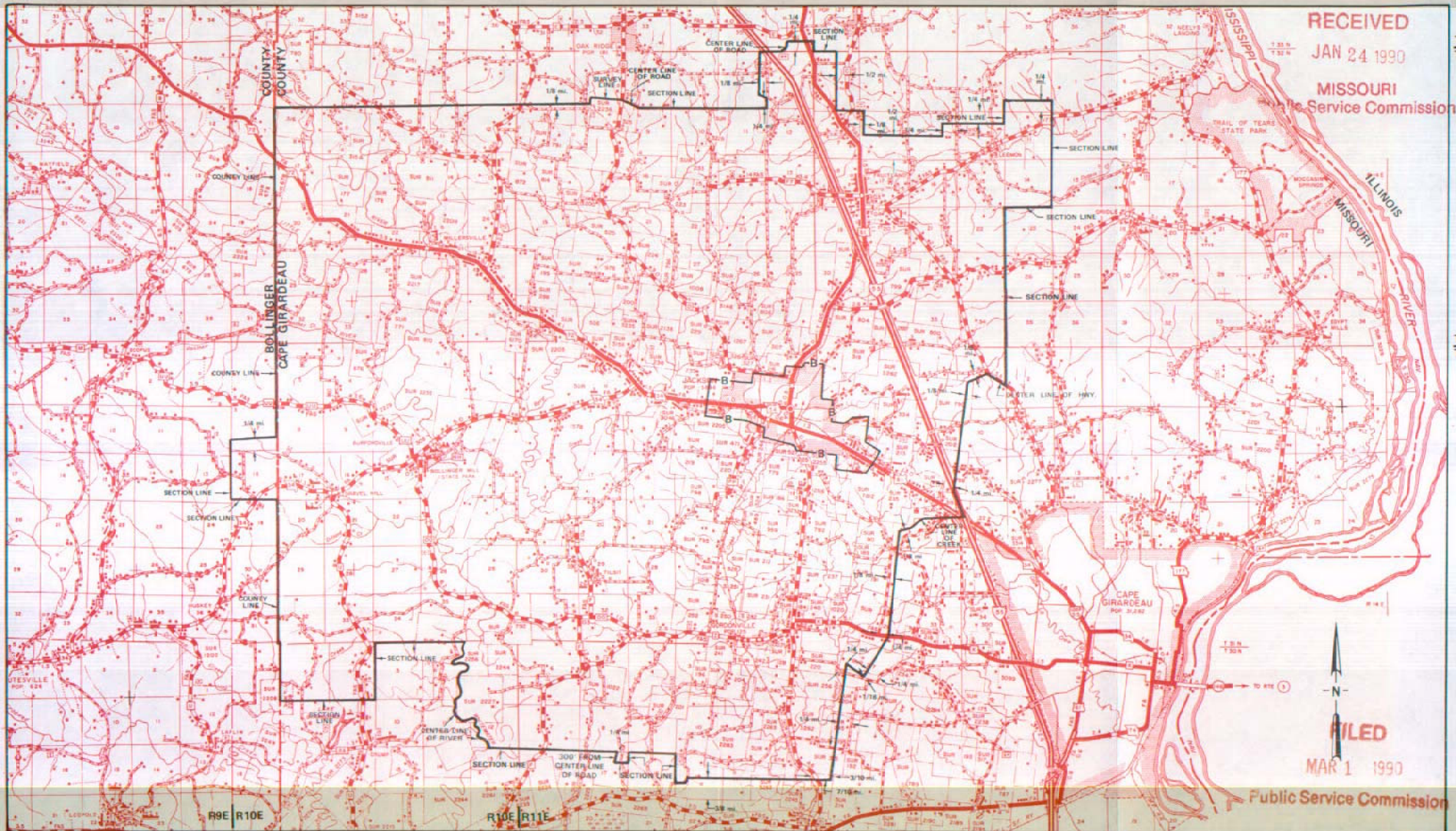
Effective: MAY 23, 1979

CANCELLED
June 29, 2007
TO-2002-185
Missouri Public
Service Commission

NO SUPPLEMENT TO THIS TARIFF WILL
BE ISSUED EXCEPT FOR THE PURPOSE OF
CANCELING THIS TARIFF.

P. S. C. Mo. No. 17
EXCHANGE AREA MAP

Jackson, Missouri
9th REVISED SHEET 3
REPLACING 8th REVISED SHEET 3



RECEIVED
JAN 24 1990
MISSOURI
Public Service Commission

FILED
MAR 1 1990

Public Service Commission

By R. D. BARRON, President, Missouri Division
Southwestern Bell Telephone Company
St. Louis, Missouri

Issued: January 29, 1990

Effective: March 1, 1990

No supplement to this tariff will be issued except for the purpose of canceling this tariff.

P.S.C. Mo. No. 17

JAMES RIVER, MISSOURI
2ND REVISED SHEET 3
REPLACING 1ST REVISED SHEET 3

This exchange is included in the Nixa exchange.
For all rates and charges refer to the Nixa exchange

RECEIVED
DEC 20 1961
MISSOURI
Public Service Comm.

FILED

JAN 19 1962

PUBLIC SERVICE COMMISSION

Issued: December 19, 1961

Effective: January 19, 1962

By F. B. HUNT, Vice President and General Manager
Southwestern Bell Telephone Company
St. Louis, Missouri

CANCELLED
June 29, 2007
TO-2002-185
Missouri Public
Service Commission

SBC PSC MO #17
Jasper, Missouri
1st Revised Sheet 2
Replacing Original Sheet 2

Non-Scannable Map

(Is viewable in the Data Center
200 Madison Street, 1st Floor
Jefferson City MO)

NO SUPPLEMENT TO THIS TARIFF WILL BE ISSUED EXCEPT FOR THE PURPOSE OF CANCELING THIS TARIFF.

P. S. C. Mo. No. 17

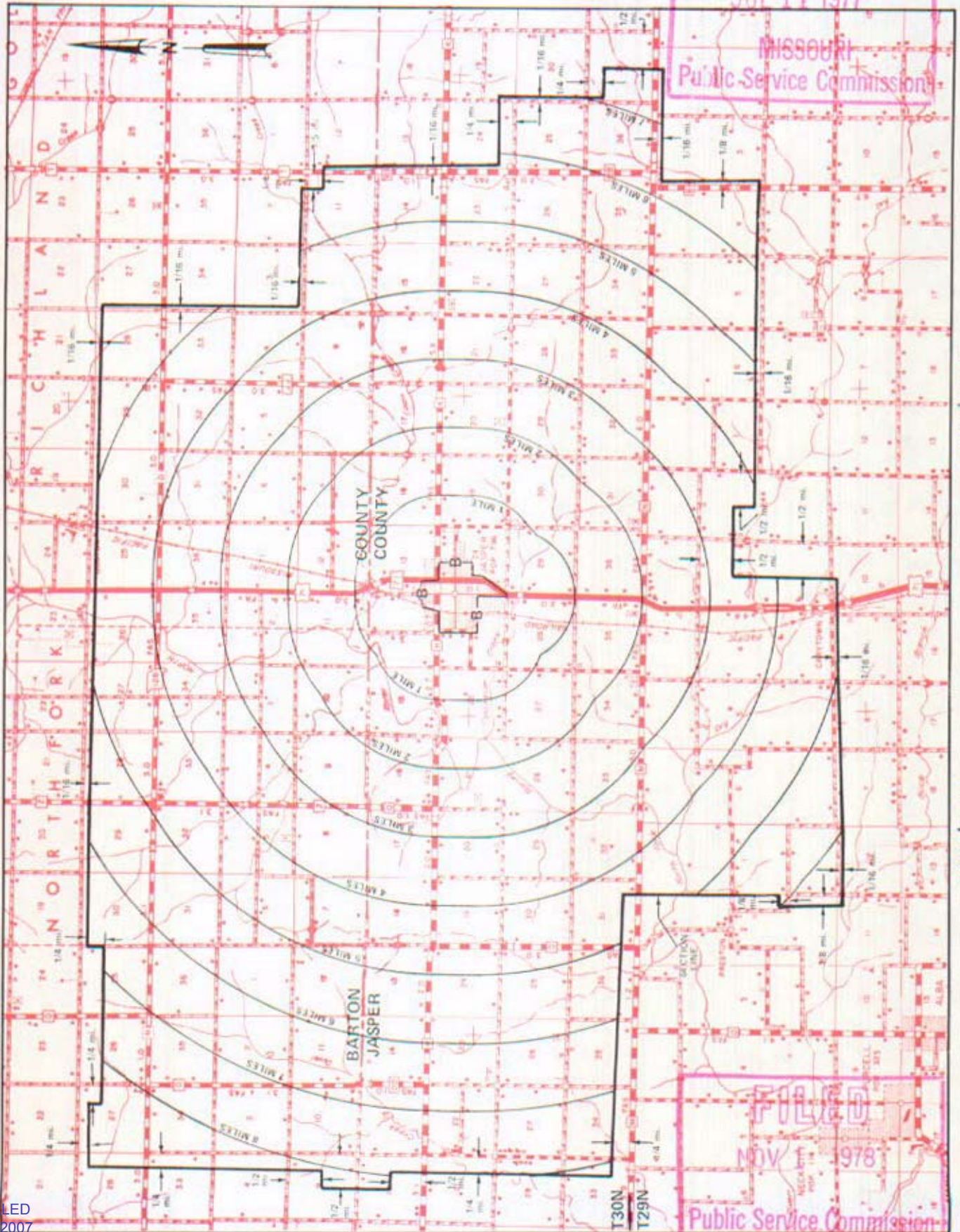
EXCHANGE AREA MAP

Jasper, Missouri

RECEIVED
6th REVISED SHEET 3
REPLACING 5th REVISED SHEET 3

JUL 11 1977

MISSOURI
Public Service Commission



T31N
T30N

By R. R. SHOCKLEY, Vice President, Missouri
Southwestern Bell Telephone Company

FILED
NOV 1 1978
Public Service Commission

NOV 1 - 1978

CANCELLED
June 29, 2007
TO-2002-185
Missouri Public
Service Commission

July 11 1977

No supplement to this tariff will be issued except for the purpose of canceling this tariff.

Local Exchange Tariff
4th Revised Sheet 2
Replacing 3rd Revised Sheet 2

RECEIVED

MAR 13 1998

MO. PUBLIC SERVICE COMM

RESERVED FOR FUTURE USE

FILED

APR 12 1998

**MISSOURI
Public Service Commission**

Issued: **MAR 13 1998**

Effective: **APR 12 1998**

By PRISCILLA HILL-ARDOIN, President-Missouri
Southwestern Bell Telephone Company
St. Louis, Missouri

SBC Missouri
Base Rate Area Map
Joplin
PSC MO No. 17
3rd Revised Sheet 2

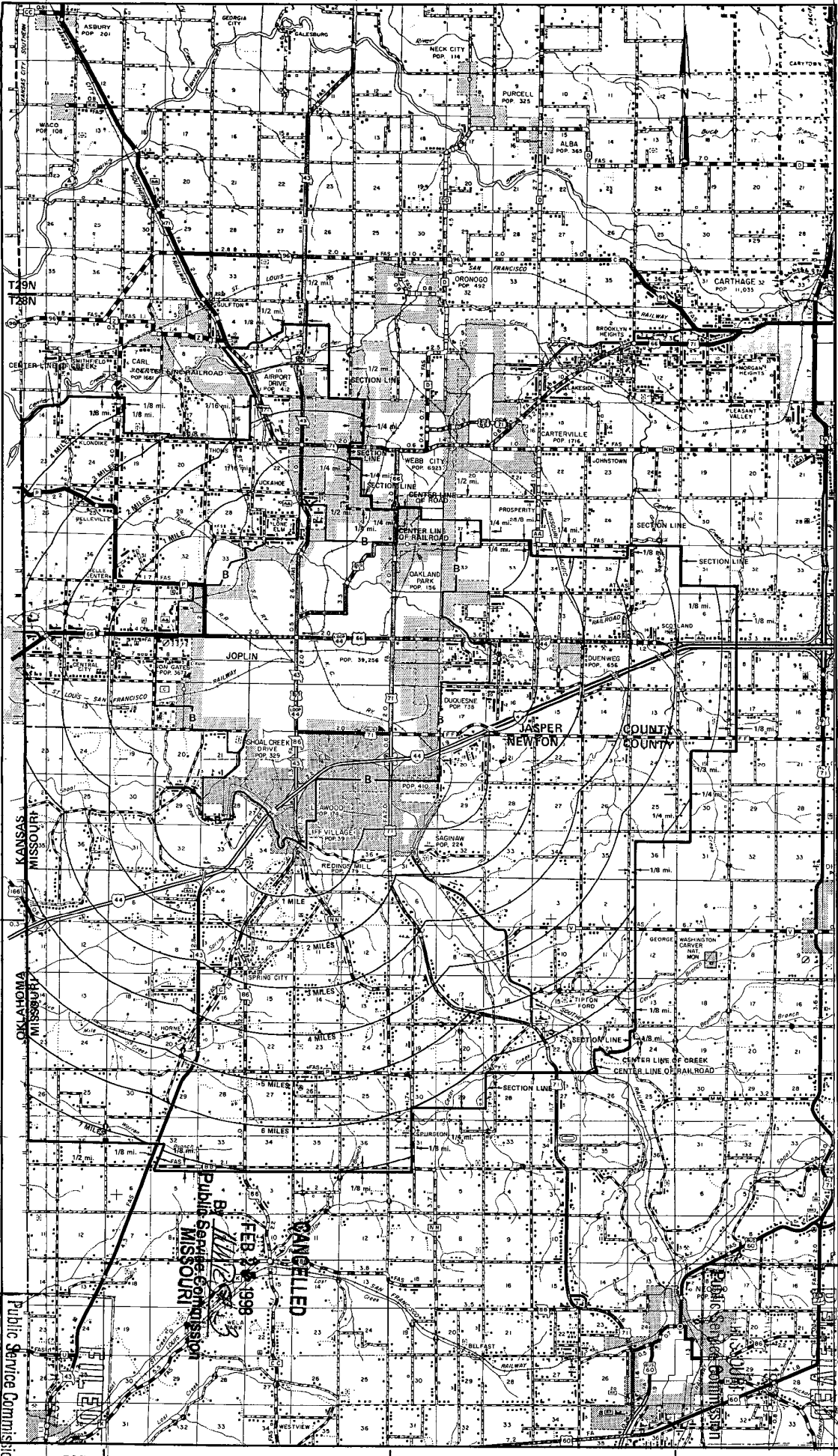
Non-Scannable Map

(Viewable in the Data Center
located at:
200 Madison Street, 1st Floor
Jefferson City MO)

NO SUPPLEMENT TO THIS TARIFF WILL BE ISSUED EXCEPT FOR THE PURPOSE OF CANCELING THIS TARIFF.

P. S. C. Mo. No. 17
EXCHANGE AREA MAP

Joplin, Missouri
10th REVISED SHEET 3
REPLACING 9th REVISED SHEET 3



Issued: March 1, 1977

By R. R. SHOCKLEY, Vice President, Missouri
Southwestern Bell Telephone Company
St. Louis, Missouri

T28N
T27N

T27N
T28N

Effective: JUL 8 1977

R34W R33W

R33W R32W

R32W R31W

CANCELLED
FEB 28 1999
Public Service Commission
MISSOURI

Public Service Commission

Public Service Commission