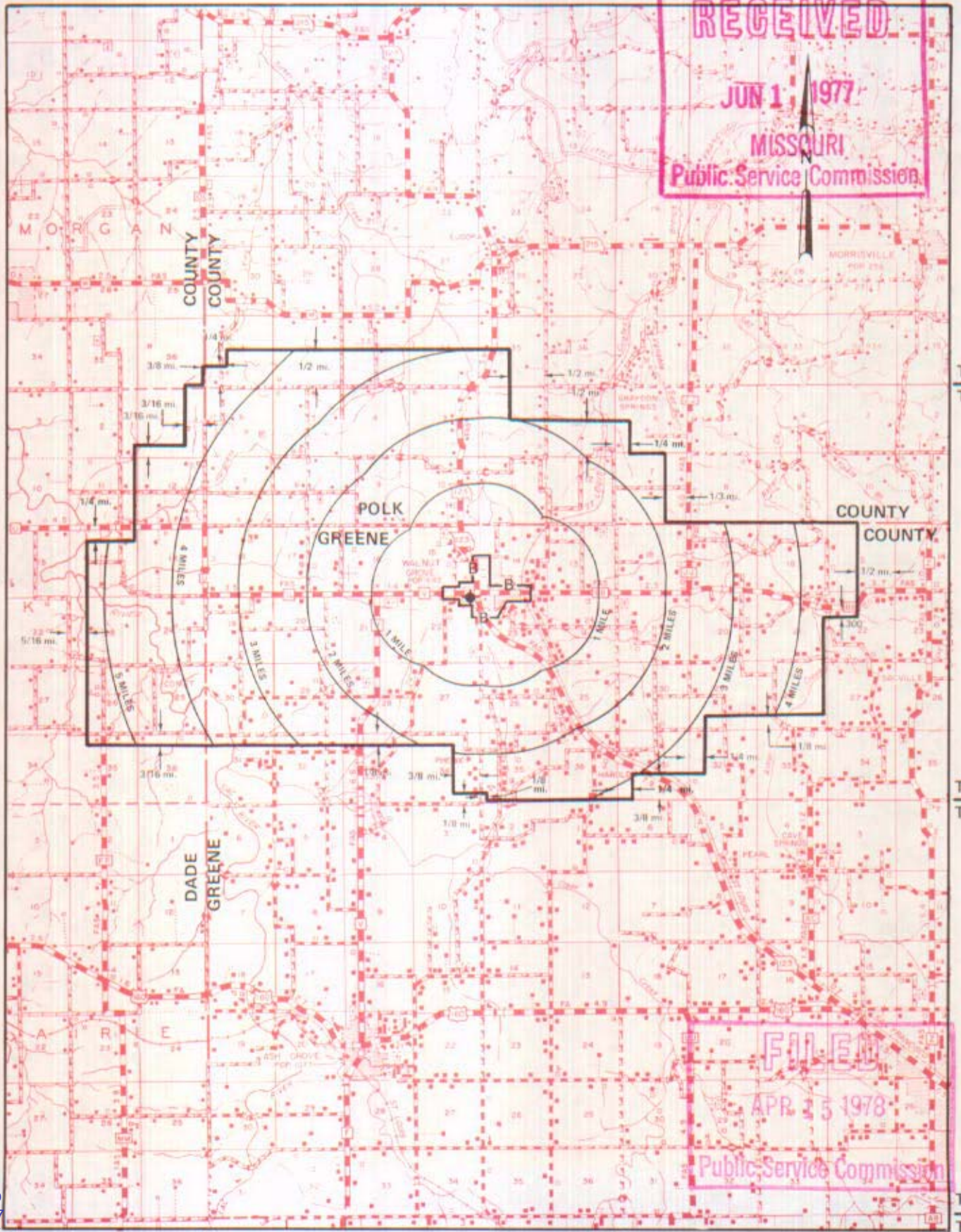


NO SUPPLEMENT TO THIS TARIFF WILL BE ISSUED EXCEPT FOR THE PURPOSE OF CANCELING THIS TARIFF.

P. S. C. Mo. No. 17
EXCHANGE AREA MAP

Walnut Grove, Missouri

6th REVISED SHEET 3
REPLACING 5th REVISED SHEET 3



RECEIVED
JUN 1 1977
MISSOURI
Public Service Commission

FILED
APR 15 1978
Public Service Commission

CANCELLED
June 29, 2007
TO-2002-185
Missouri Public
Service Commission

Issued: June 1, 1977

By R. R. SHOCKLEY, Vice President, Missouri
Southwestern Bell Telephone Company
St. Louis, Missouri

Effective: APR 15 1978

NO SUPPLEMENT TO THIS TARIFF WILL BE ISSUED EXCEPT FOR THE PURPOSE OF CANCELING THIS TARIFF.

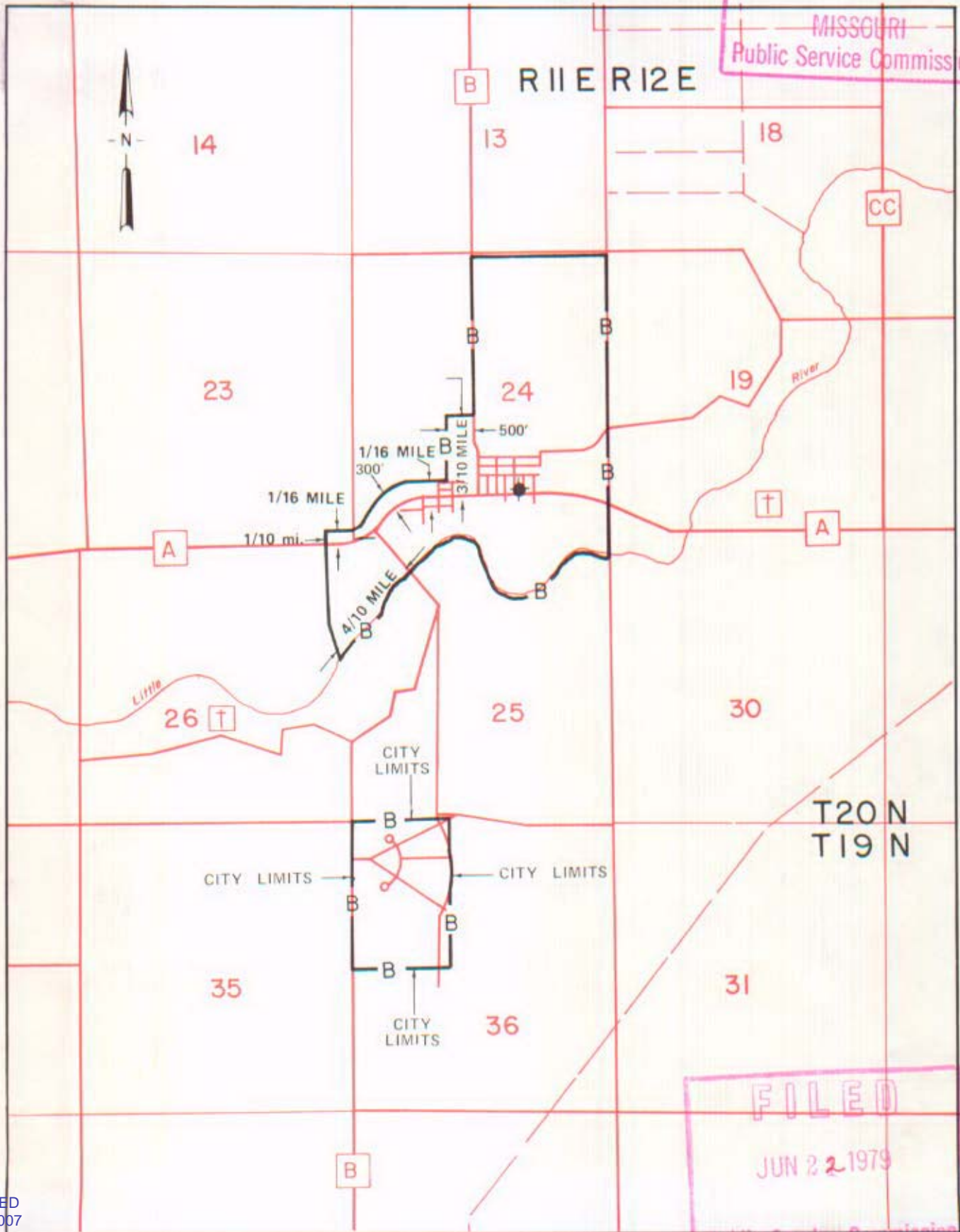
P. S. C. Mo. No. 17

BASE RATE AREA MAP

Wardell, Missouri
4th REVISED SHEET 2
REPLACING 3rd REVISED SHEET 2

MAY 11 1979

MISSOURI
Public Service Commission



FILED
JUN 22 1979
Public Service Commission

CANCELLED
June 29, 2007
TO-2002-185
Missouri Public
Service Commission

By R. R. SHOCKLEY, Vice President, Missouri
Southwestern Bell Telephone Company
St. Louis, Missouri

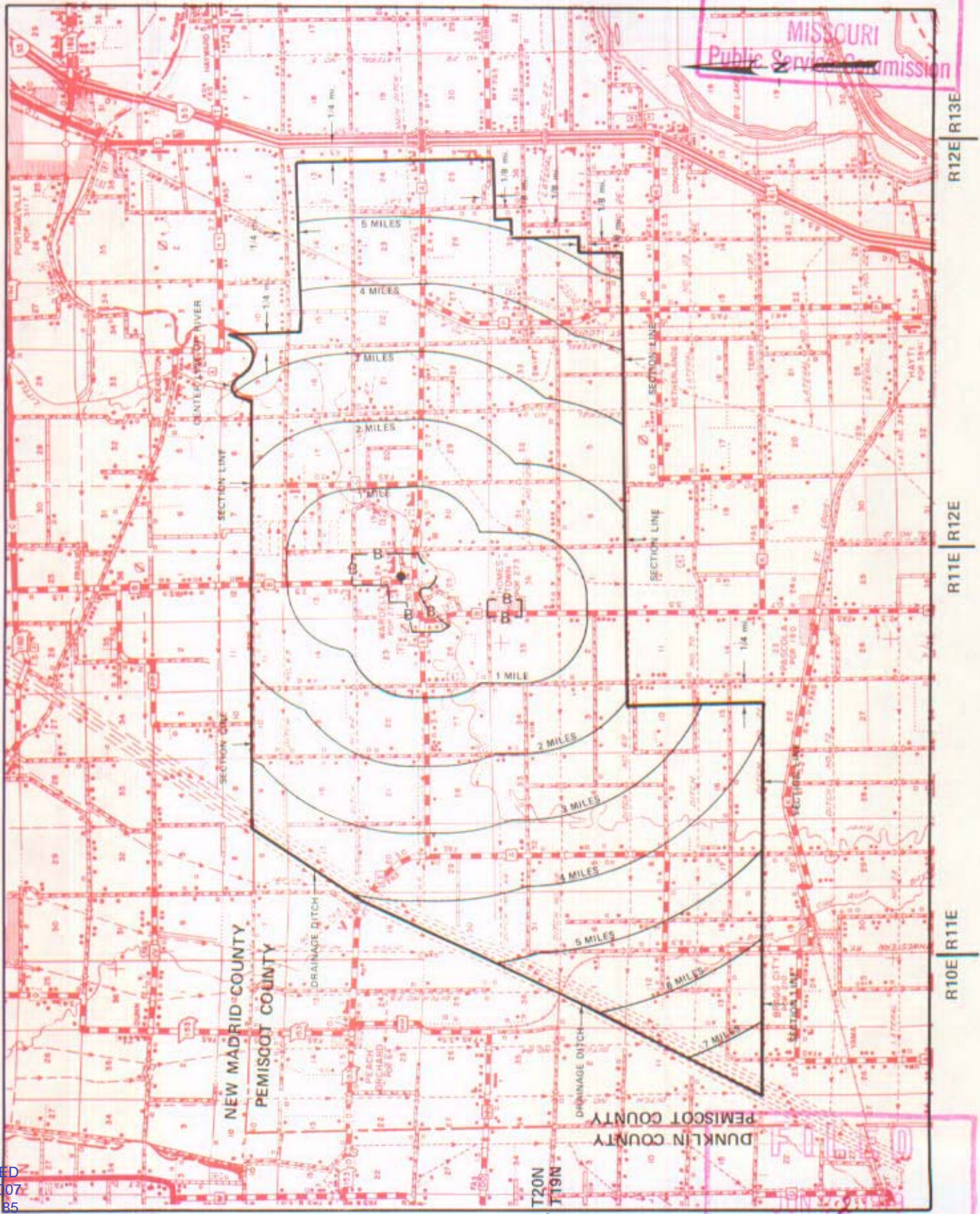
Issued: May 22, 1979

Effective: June 22, 1979

NO SUPPLEMENT TO THIS TARIFF WILL BE ISSUED EXCEPT FOR THE PURPOSE OF CANCELING THIS TARIFF.

P. S. C. Mo. No. 17 EXCHANGE AREA MAP

Wardell, Missouri
RECEIVED
6th REVISED SHEET 3
REPLACING 5th REVISED SHEET 3
MAY 11 1979
MISSOURI
Public Service Commission



T21N
T20N

T20N
T19N

R12E
R13E

R11E
R12E

R10E
R11E

CANCELLED
June 29, 2007
TO-2002-185
Missouri Public
Service Commission

By R. R. SHOCKLEY, Vice President, Missouri
Southwestern Bell Telephone Company
St. Louis, Missouri

FILED
Public Service Commission
Effective: June 22, 1979

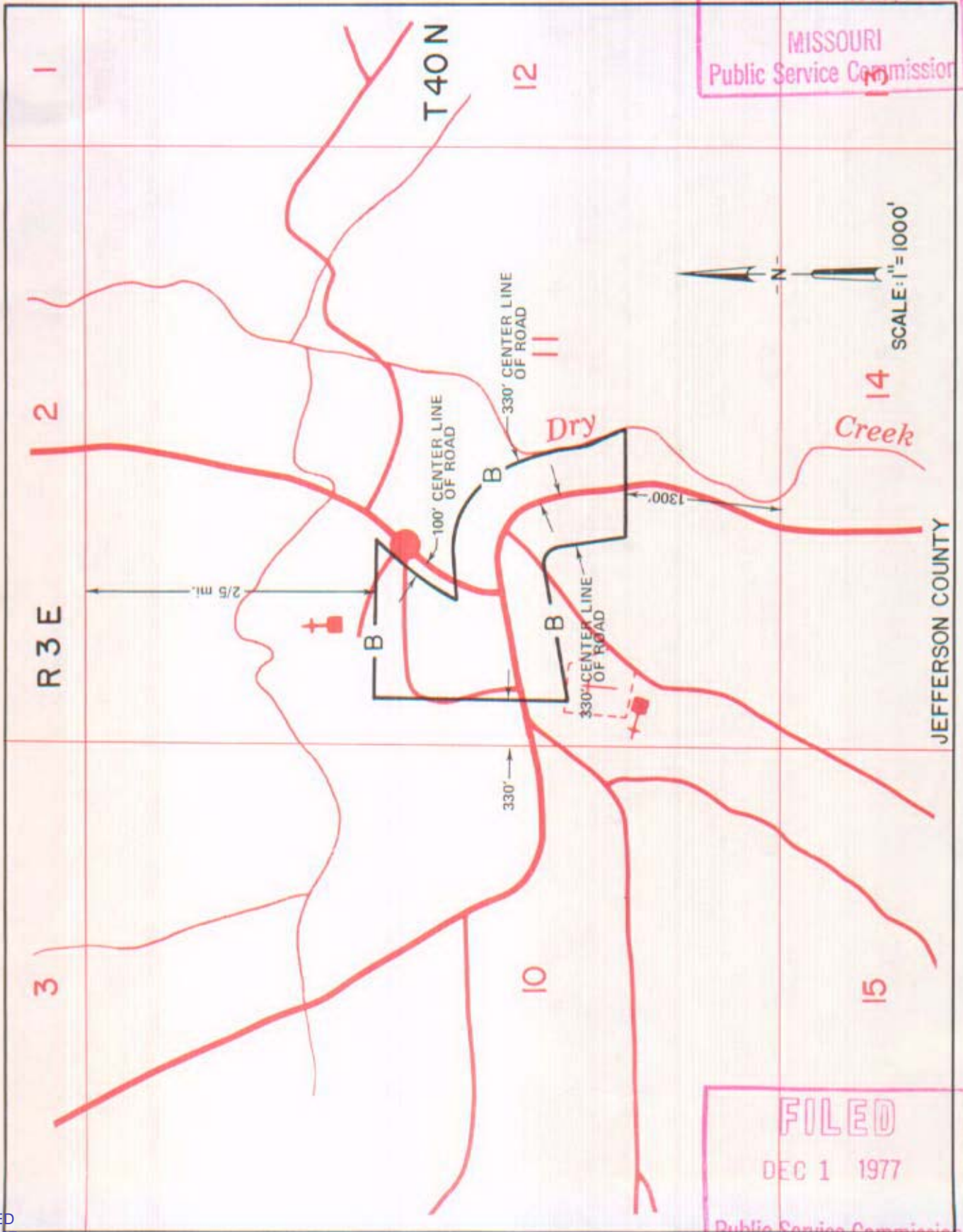
Issued: **May 22, 1979**

NO SUPPLEMENT TO THIS TARIFF WILL BE ISSUED EXCEPT FOR THE PURPOSE OF CANCELING THIS TARIFF.

P. S. C. Mo. No. 17

BASE RATE AREA MAP

Ware, Missouri
RECEIVED
1st REVISED SHEET 2
REPLACING ORIGINAL SHEET 2
MAY 20 1977
MISSOURI
Public Service Commission



FILED
DEC 1 1977
Public Service Commission

CANCELLED
June 29, 2007
TO-2002-185
Missouri Public
Service Commission

By R. R. SHOCKLEY, Vice President, Missouri
Southwestern Bell Telephone
St. Louis, Missouri

Issued: MAY 23 1977

Effective: DEC 1 1977

NO SUPPLEMENT TO THIS TARIFF WILL BE ISSUED EXCEPT FOR THE PURPOSE OF CANCELING THIS TARIFF.

P. S. C. Mo. No. 17

EXCHANGE AREA MAP

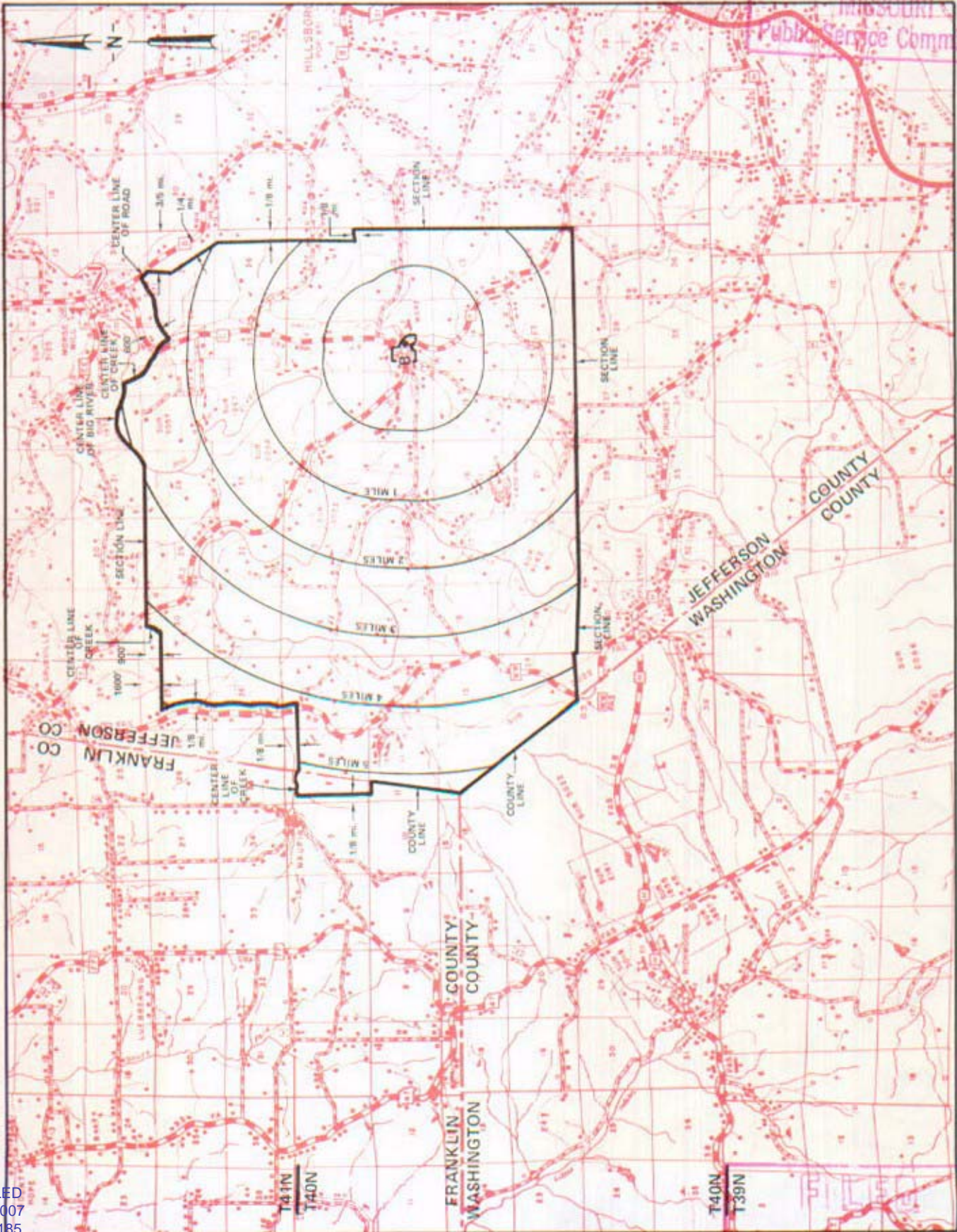
REPLACING 3rd REVISED SHEET 3

4th REVISED SHEET 3

MAY 20 1977

RECEIVED
Ware, Missouri

MISSOURI
Public Service Commission



CANCELLED
June 29, 2007
TO-2002-185
Missouri Public
Service Commission

By R. R. SHOCKLEY, Vice President, Missouri
Southwestern Bell Telephone Company
St. Louis, Missouri

Issued: May 23, 1977

DEC 1 1977
Public Service Commission
DEC 1 1977

NO SUPPLEMENT TO THIS TARIFF WILL BE ISSUED EXCEPT FOR THE PURPOSE OF CANCELING THIS TARIFF.

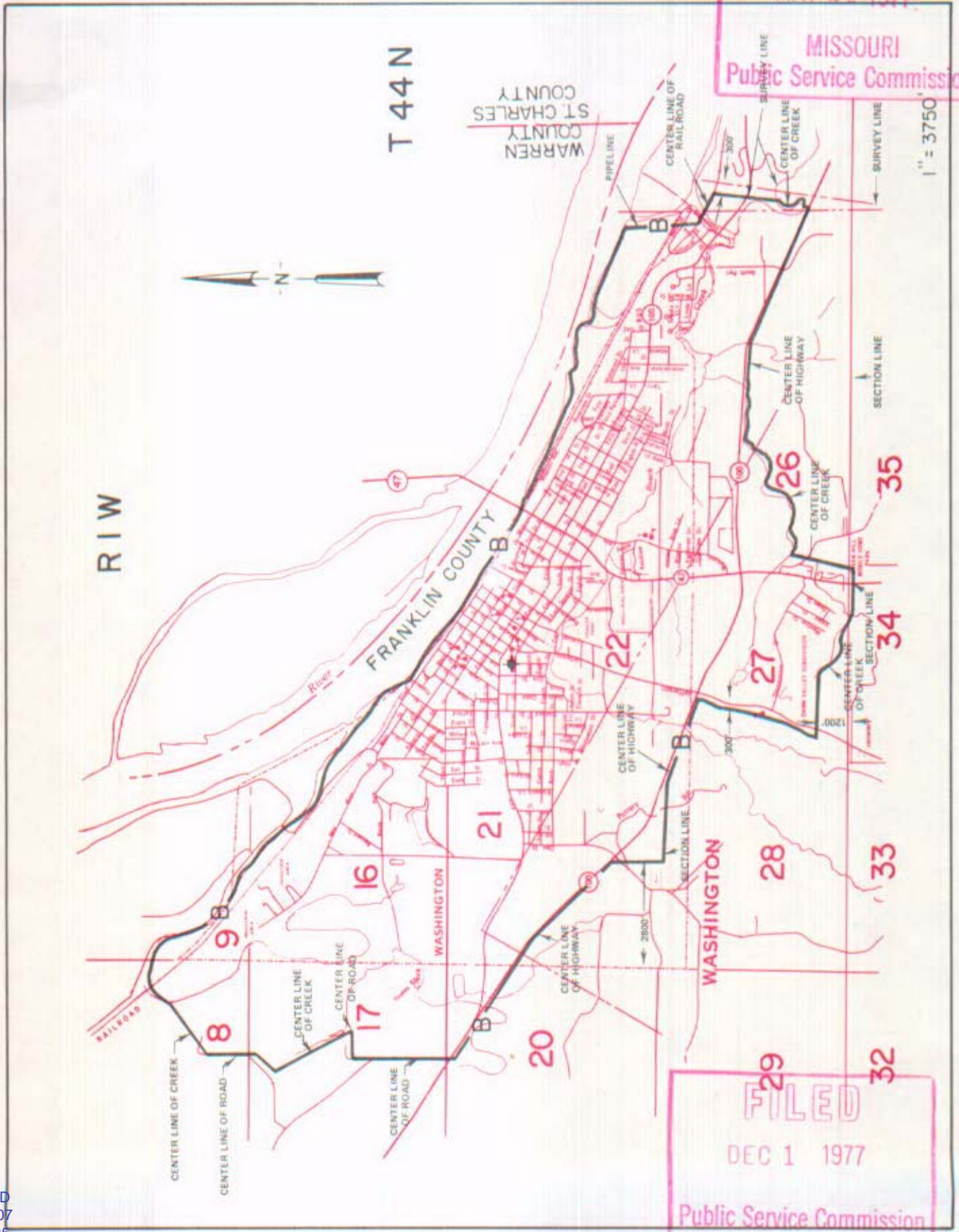
P. S. C. Mo. No. 17

BASE RATE AREA MAP

Washington, Missouri
RECEIVED
2nd REVISED SHEET 2
REPLACING 1st REVISED SHEET 2

MAY 20 1977

MISSOURI
Public Service Commission



FILED
DEC 1 1977
Public Service Commission

CANCELLED
June 29, 2007
TO-2002-185
Missouri Public
Service Commission

By R. R. SHOCKLEY, Vice President, Missouri
Southwestern Bell Telephone
St. Louis, Missouri

Issued: MAY 23 1977

Effective: DEC 1 1977

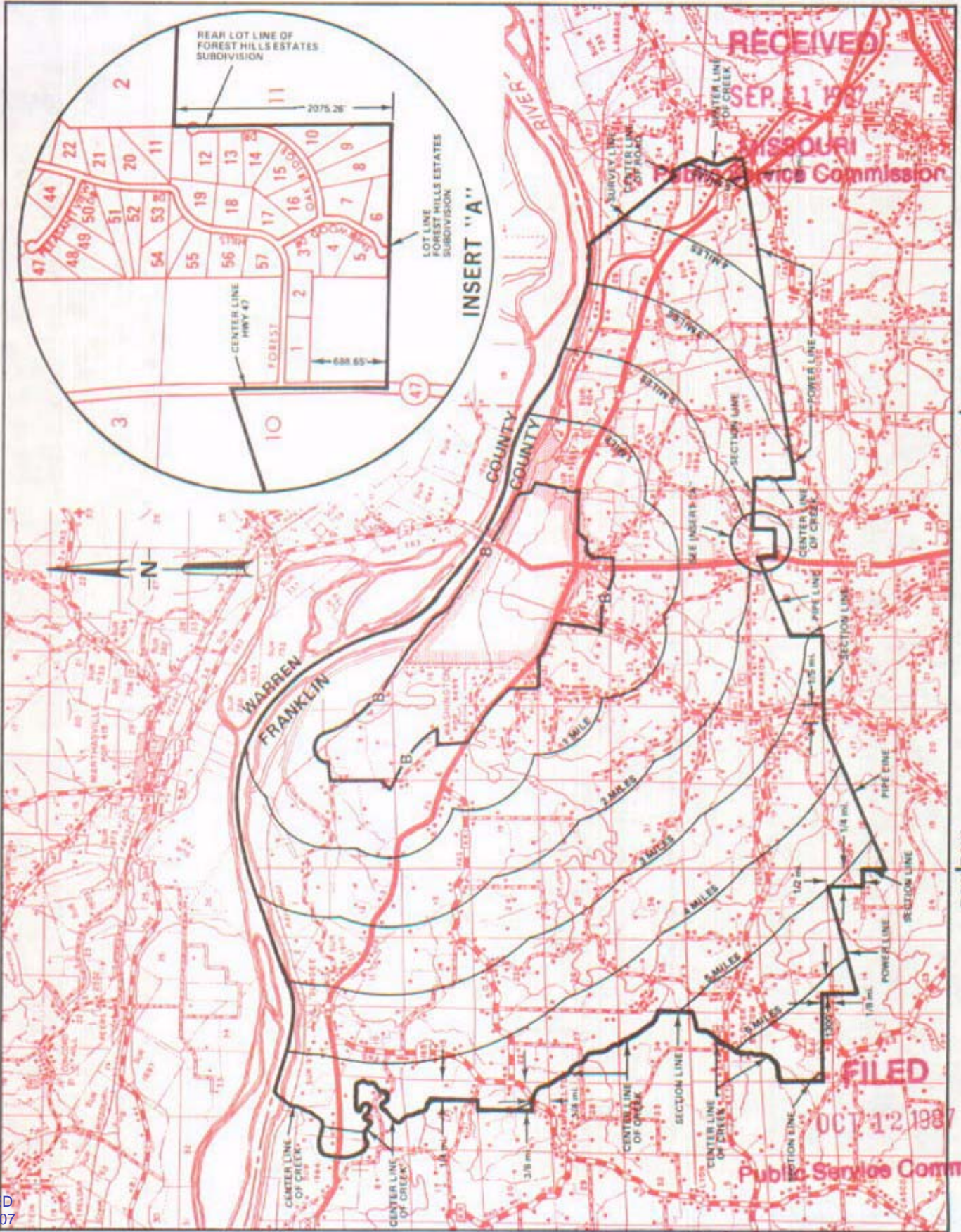
NO SUPPLEMENT TO THIS TARIFF WILL BE ISSUED EXCEPT FOR THE PURPOSE OF CANCELING THIS TARIFF.

P. S. C. Mo. No. 17

Washington, Missouri

7th REVISED SHEET 3
REPLACING 6th REVISED SHEET 3

EXCHANGE AREA MAP



R1W|R1E

R2W|R1W

CANCELLED
June 29, 2007
TO-2002-185
Missouri Public
Service Commission

Issued: SEP 11 1987

By R. D. BARRON, President, Missouri Division
Southwestern Bell Telephone Company
St. Louis, Missouri

Effective: OCT 12 1987

SBC PSC MO #17
Webb City, Missouri
4th Revised Sheet 2
Replacing 3rd Revised Sheet 2

Non-Scannable Map

(Is viewable in the Data Center
200 Madison Street, 1st Floor
Jefferson City MO)

SBC Missouri
Base Rate Area Map
Webb City
PSC MO No. 17
3rd Revised Sheet 2

Non-Scannable Map

(Viewable in the Data Center
located at:
200 Madison Street, 1st Floor
Jefferson City MO)

NO SUPPLEMENT TO THIS TARIFF WILL BE ISSUED EXCEPT FOR THE PURPOSE OF CANCELING THIS TARIFF.

P. S. C. Mo. No. 17 EXCHANGE AREA MAP

Webb City, Missouri

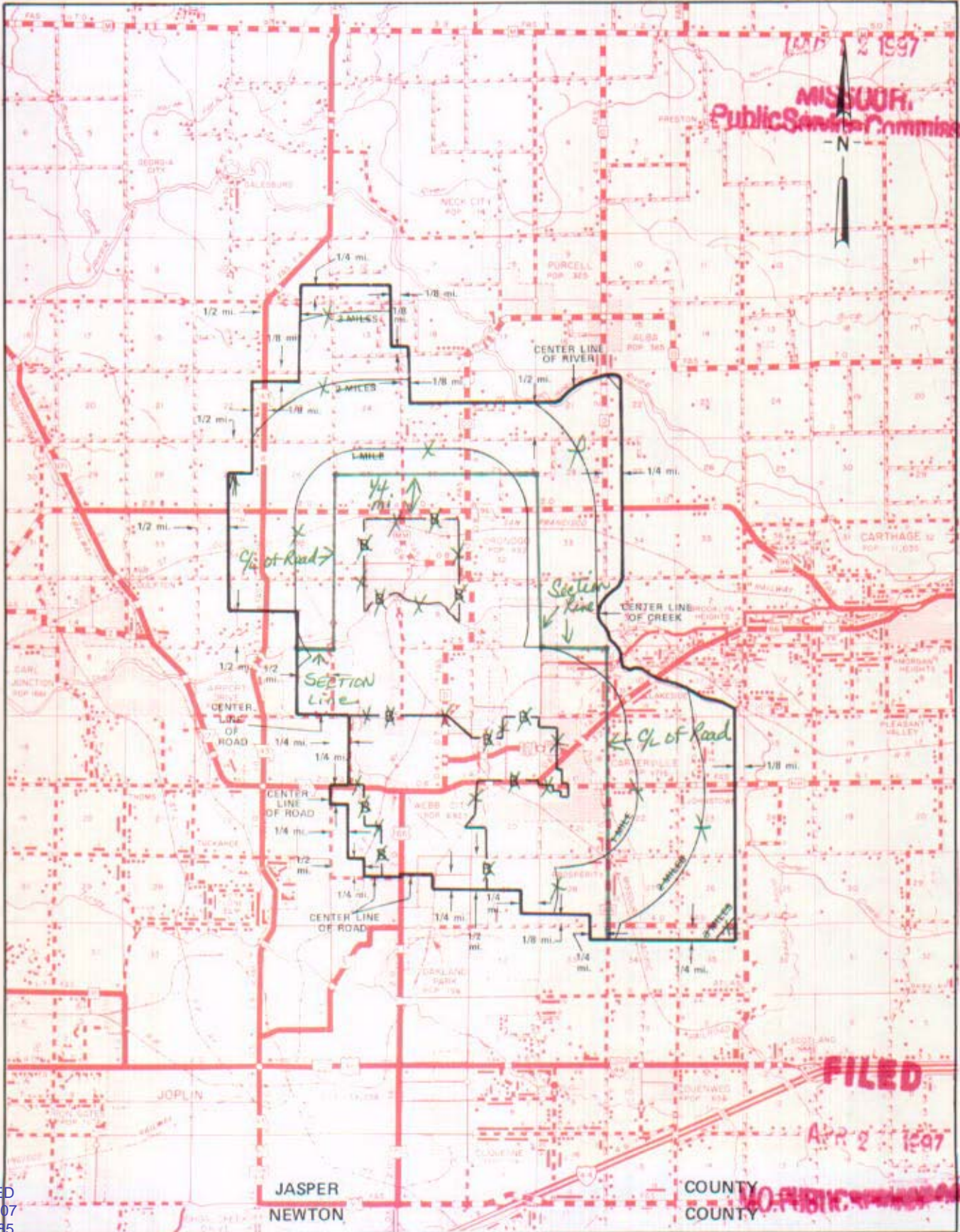
12th REVISED SHEET 3
REPLACING 10th REVISED SHEET 3

RECEIVED

T30N
T29N

T29N
T28N

T28N
T27N



MAR 2 1997
MISSOURI
Public Service Commission

FILED
APR 2 1997

CANCELLED
June 29, 2007
TO-2002-185
Missouri Public
Service Commission

03-14-97

R33W | R32W | R31W | R30W

By *R. R. SHOCKLEY*, Vice President, Missouri

Southwestern Bell Telephone Company

St. Louis, Missouri

COUNTY
COUNTY

By Karen E. Jennings, President - Missouri

04-27-97

~~NOV 01 1970~~

Issued: July 11, 1977

Effective: NOV 01 1970

WEBSTER GROVES

see

St. Louis District Exchange Rates

under

St. Louis

June 1, 1937

NO SUPPLEMENT TO THIS TARIFF WILL
BE ISSUED EXCEPT FOR THE PURPOSE OF
CANCELING THIS TARIFF.

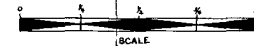
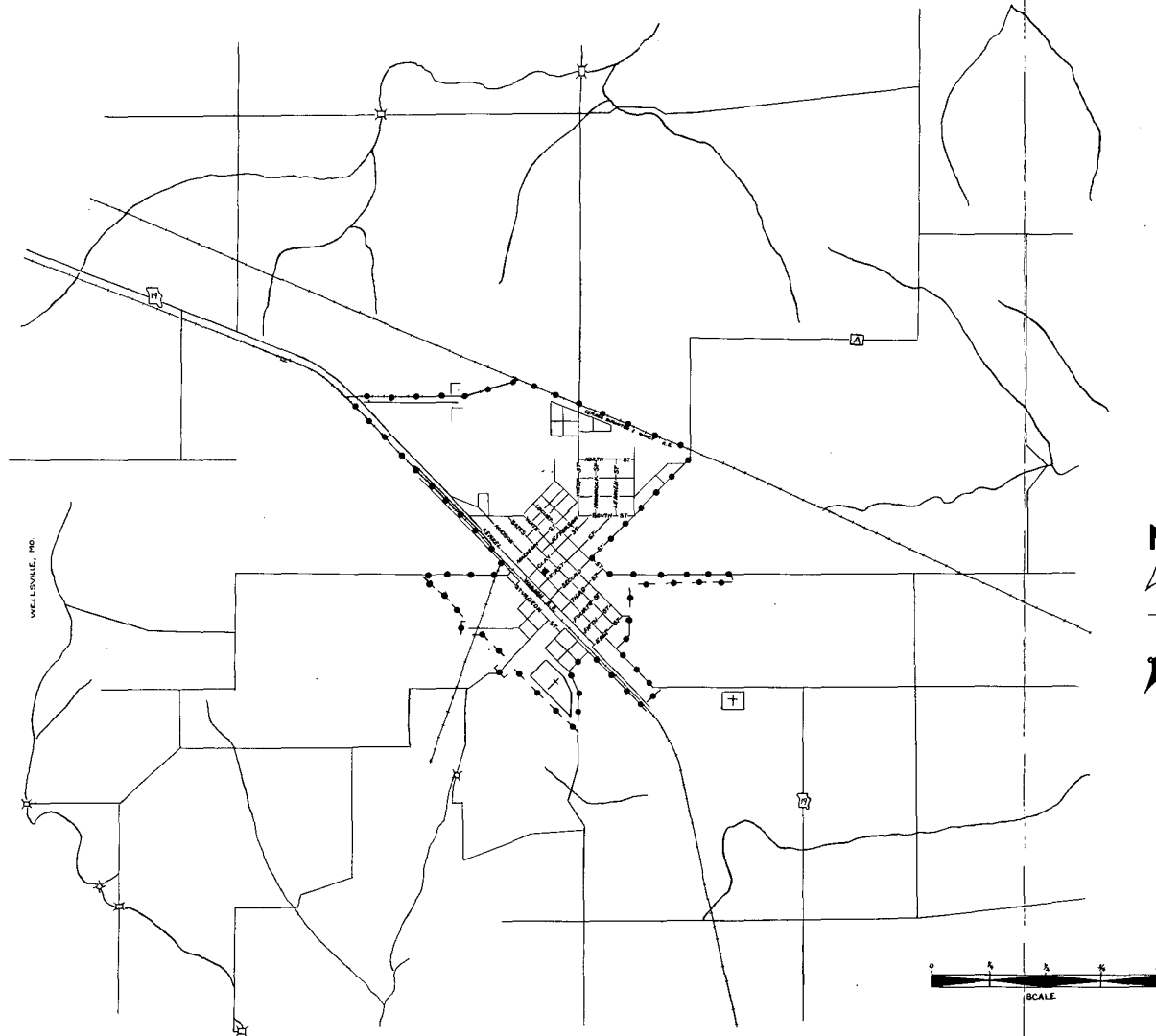
P. S. C. Mo. No. 17
BASE RATE AREA MAP

Wellsville, Missouri
ORIGINAL SHEET 2
REPLACING ORIGINAL SHEET 1-A

RECEIVED
JUL 21 1952
MISSOURI
Public Service Comm.

FILED
AUG 21 1952

PUBLIC SERVICE COMMISSION



CODE
BELL CENTRAL OFFICE: +
BASE RATE AREA LIMITS: ◆◆◆◆

CANCELLED
June 29, 2007
TO-2002-185
Missouri Public
Service Commission

Issued: July 21, 1952

By H. R. TOWLES, General Manager
Southwestern Bell Telephone Company
St. Louis, Missouri

Effective: August 21, 1952

NO SUPPLEMENT TO THIS TARIFF WILL BE ISSUED EXCEPT FOR THE PURPOSE OF CANCELING THIS TARIFF.

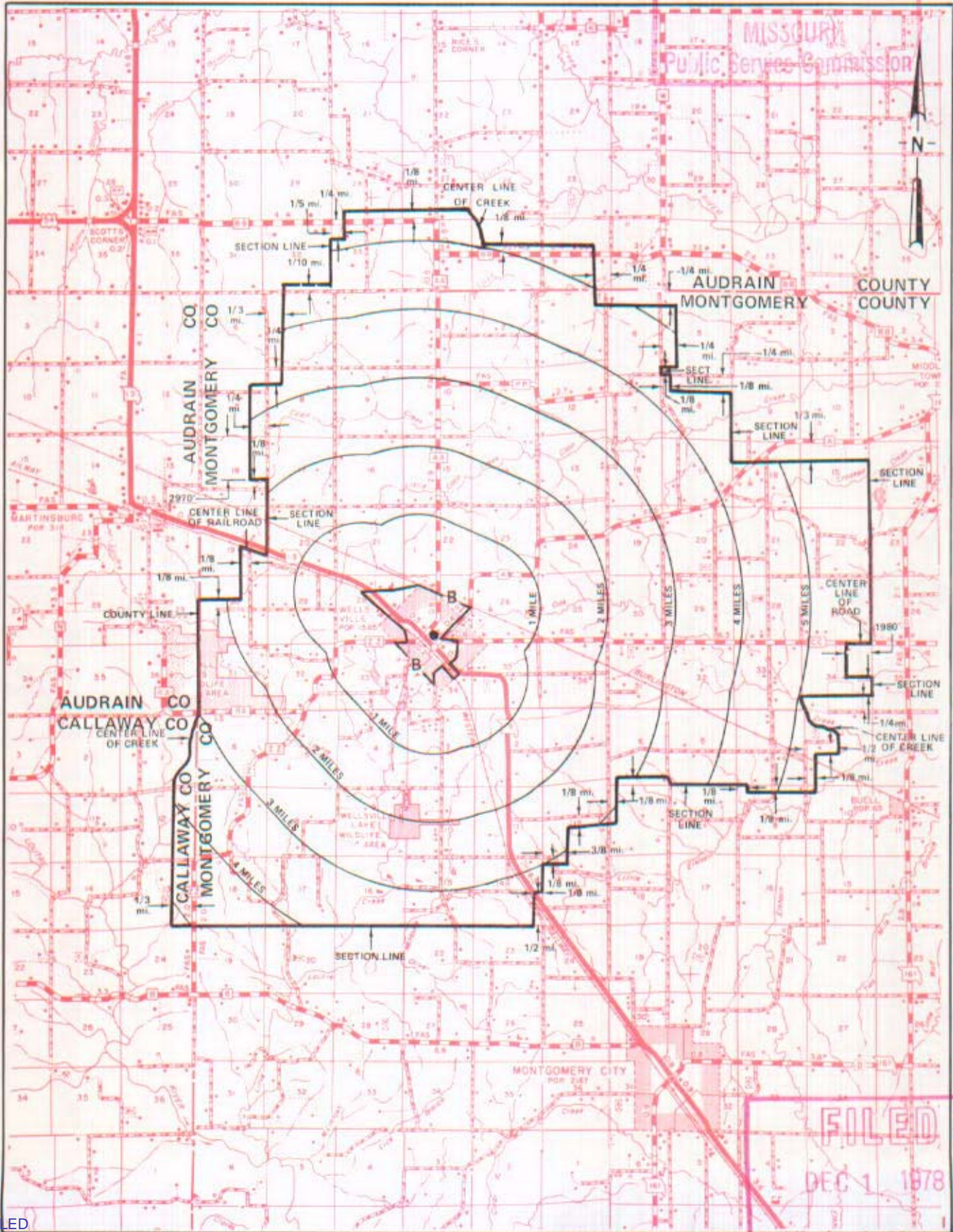
P. S. C. Mo. No. 17

EXCHANGE AREA MAP

Wellsville, Missouri
REPLACING 5th REVISED SHEET 3
4th REVISED SHEET 3

FEB 14 1977

MISSOURI
Public Service Commission



T51N
T50N

T50N
T49N

T49N
T48N

R7W | R6W

R6W | R5W

FILED
DEC 1 1978
Public Service Commission

By R. R. SHOCKLEY, Vice President, Missouri
Southwestern Bell Telephone Company

St. Louis, Missouri

Effective: DEC 1 1978

CANCELLED
June 29, 2007
TO-2002-185
Missouri Public
Service Commission

Issued: February 15, 1977

SBC PSC MO #17
Westphalia, Missouri
Original Sheet 2
Replacing Ozark Central Tel. Co.
P.S.C. Mo. No. 1
Original Sheet 2

Non-Scannable Map

**(Is viewable in the Data Center
200 Madison Street, 1st Floor
Jefferson City MO)**

NO SUPPLEMENT TO THIS TARIFF WILL BE ISSUED EXCEPT FOR THE PURPOSE OF CANCELING THIS TARIFF.

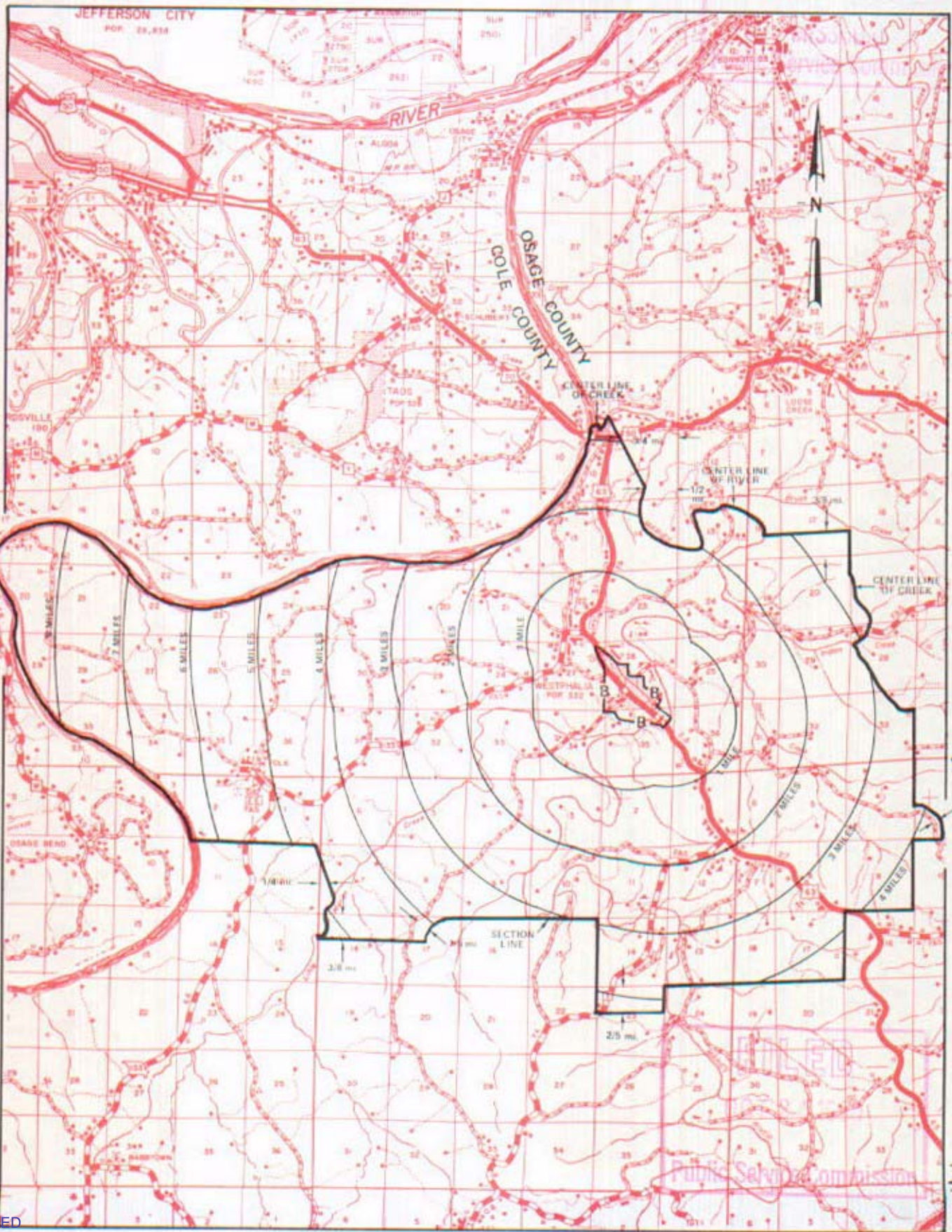
P. S. C. Mo. No. 17

Westphalia, Missouri

EXCHANGE AREA MAP

7th REVISED SHEET 3
REPLACING 6th REVISED SHEET 3

SEP 12 1980



CANCELLED
June 29, 2007
TO-2002-185
Missouri Public
Service Commission

Issued: SEPT 23, 1980

R11W | R10W R10W | R9W

By R. R. SHOCKLEY, Vice President, Missouri
Southwestern Bell Telephone Company
St. Louis, Missouri

Effective: OCT 24, 1980

No supplement to this tariff will be issued except for the purpose of canceling this tariff

WILLARD, MISSOURI
3rd Revised Sheet 2
Replacing 2nd Revised Sheet 2

BASE RATE AREA MAP

THIS AREA IS INCLUDED IN THE SPRINGFIELD METROPOLITAN EXCHANGE.

RECEIVED

MAY 25 1993

MO. PUBLIC SERVICE COMM.

FILED

JUL 07 1993
92-306

MO. PUBLIC SERVICE COMM.

Issued: **MAY 25 1993**

Effective: **JUL 07 1993**

By A. D. ROBERTSON, Assistant Vice President-External Affairs
Southwestern Bell Telephone Company
St. Louis, Missouri

No supplement to this
tariff will be issued
except for the purpose
of canceling this tariff

WILLARD, MISSOURI
14th Revised Sheet 3
Replacing 13th Revised Sheet 3

EXCHANGE AREA MAP

THIS AREA IS INCLUDED IN THE SPRINGFIELD METROPOLITAN EXCHANGE.

RECEIVED

MAY 25 1993

MO. PUBLIC SERVICE COMM.

FILED

JUL 07 1993
92-306

MO. PUBLIC SERVICE COMM.

Issued: **MAY 25 1993**

Effective: **JUL 07 1993**

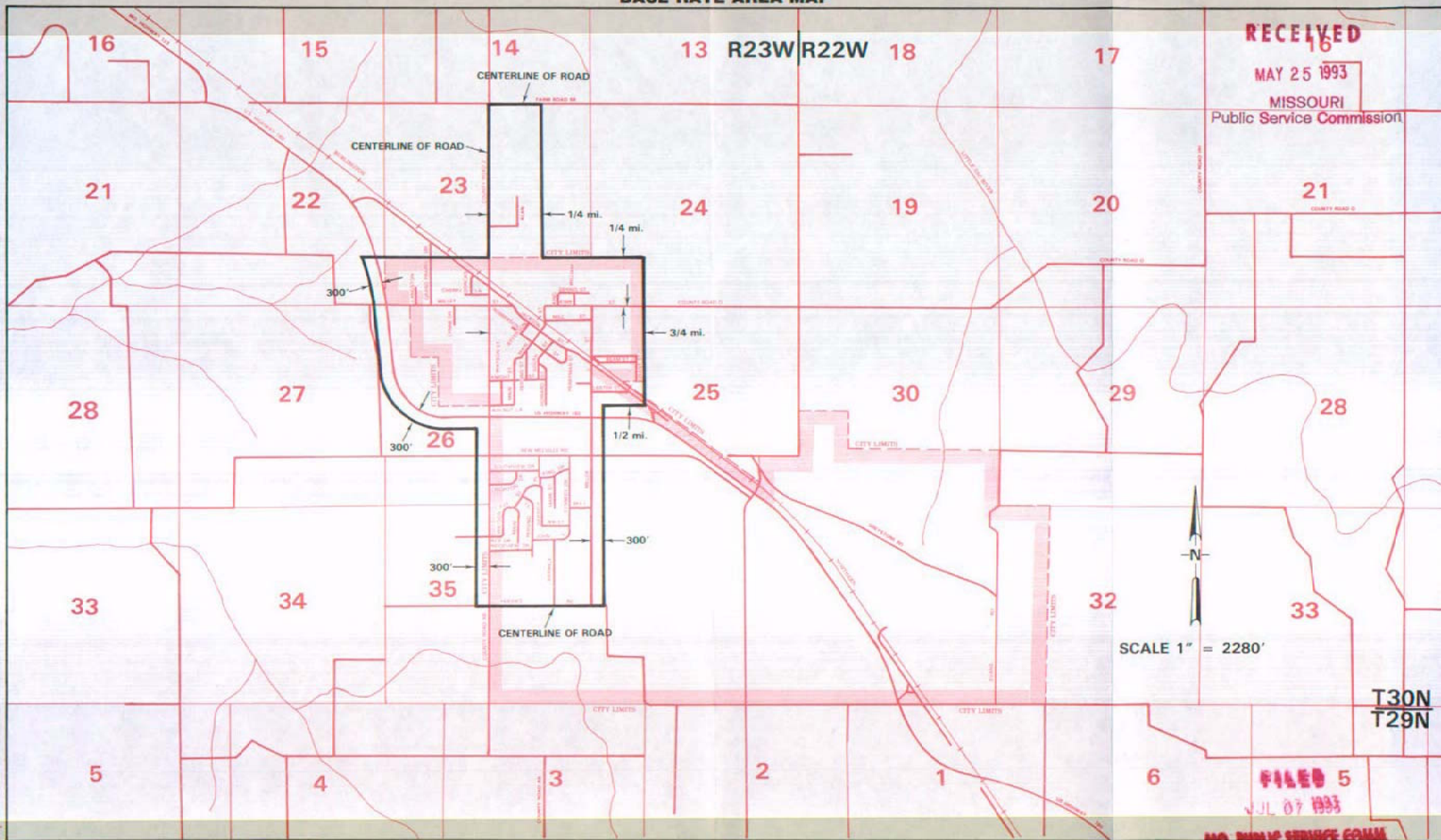
By A. D. ROBERTSON, Assistant Vice President-External Affairs
Southwestern Bell Telephone Company
St. Louis, Missouri

CANCELLED
June 29, 2007
TO-2002-185
Missouri Public
Service Commission

NO SUPPLEMENT TO THIS TARIFF WILL
BE ISSUED EXCEPT FOR THE PURPOSE OF
CANCELING THIS TARIFF.

SPRINGFIELD METROPOLITAN EXCHANGE
Willard Zone
ORIGINAL SHEET 8-A

P. S. C. Mo. No. 17
BASE RATE AREA MAP



By A. D. ROBERTSON, Assistant Vice President - External Affairs
Southwestern Bell Telephone Company
St. Louis, Missouri

Issued: MAY 25, 1993

Effective: JULY 7, 1993

CANCELLED
June 29, 2007
TO-2002-185
Missouri Public
Service Commission

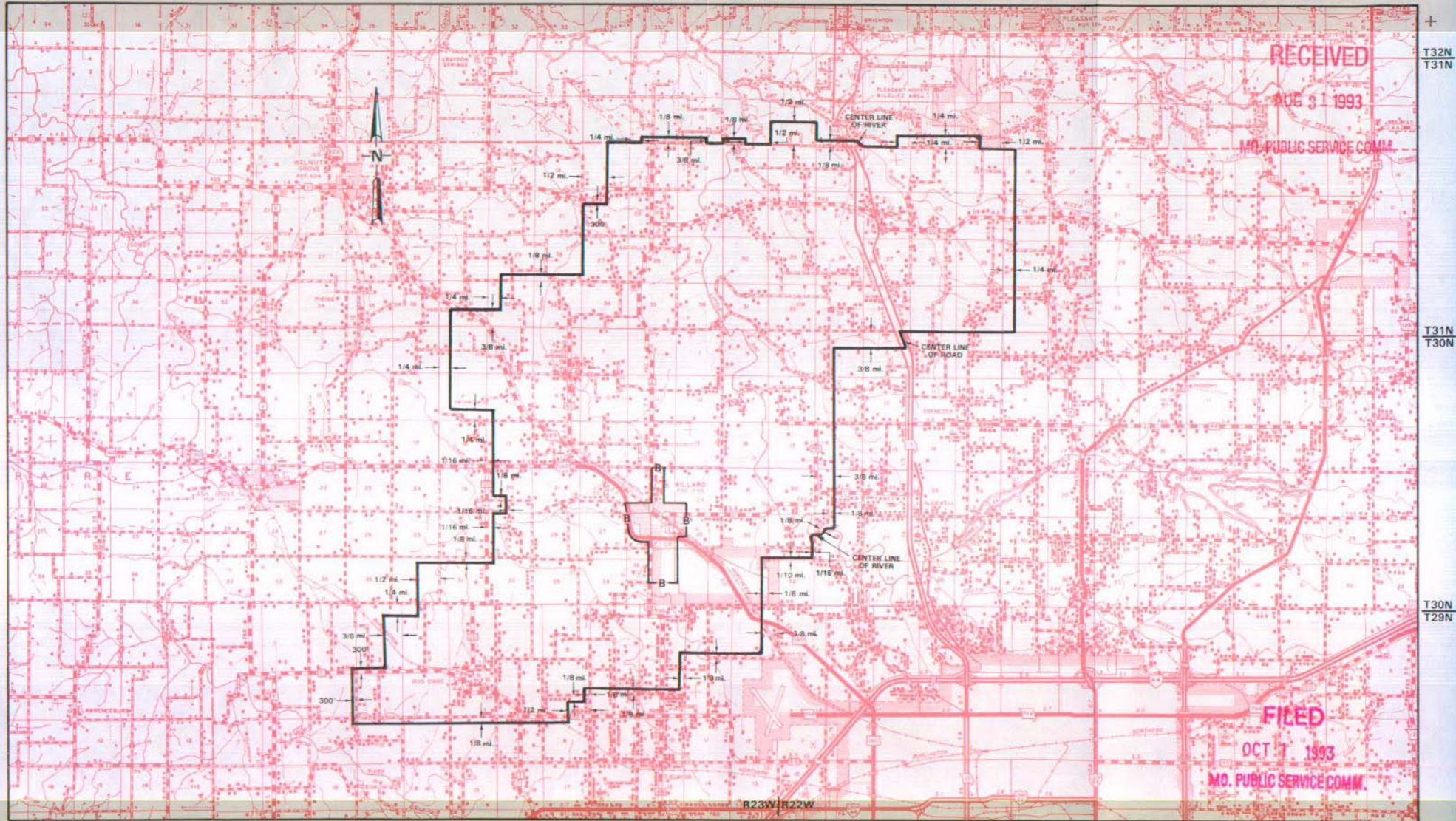
NO SUPPLEMENT TO THIS TARIFF WILL
BE ISSUED EXCEPT FOR THE PURPOSE OF
CANCELING THIS TARIFF.

SPRINGFIELD METROPOLITAN EXCHANGE

Willard Zone

1st REVISED SHEET 8-B
REPLACING ORIGINAL SHEET 8-B

**P. S. C. Mo. No. 17
ZONE AREA MAP**



R25W/R24W

R24W/R23W

By D. R. KAESHOFER, Division Manager-Regulatory & Industry Relations
Southwestern Bell Telephone Company
St. Louis, Missouri

R22W/R21W

R21W/R20W

Issued: SEPTEMBER 1, 1993

Effective: OCTOBER 1, 1993

CANCELLED
June 29, 2007
TO-2002-185
Missouri Public
Service Commission

SBC PSC MO #17

Wyatt, Missouri

Original Sheet 2

Replacing Southeast Missouri Telephone Company

P.S.C. Mo. No. 2

1st Revised Sheet 2

Non-Scannable Map

**(Is viewable in the Data Center
200 Madison Street, 1st Floor
Jefferson City MO)**

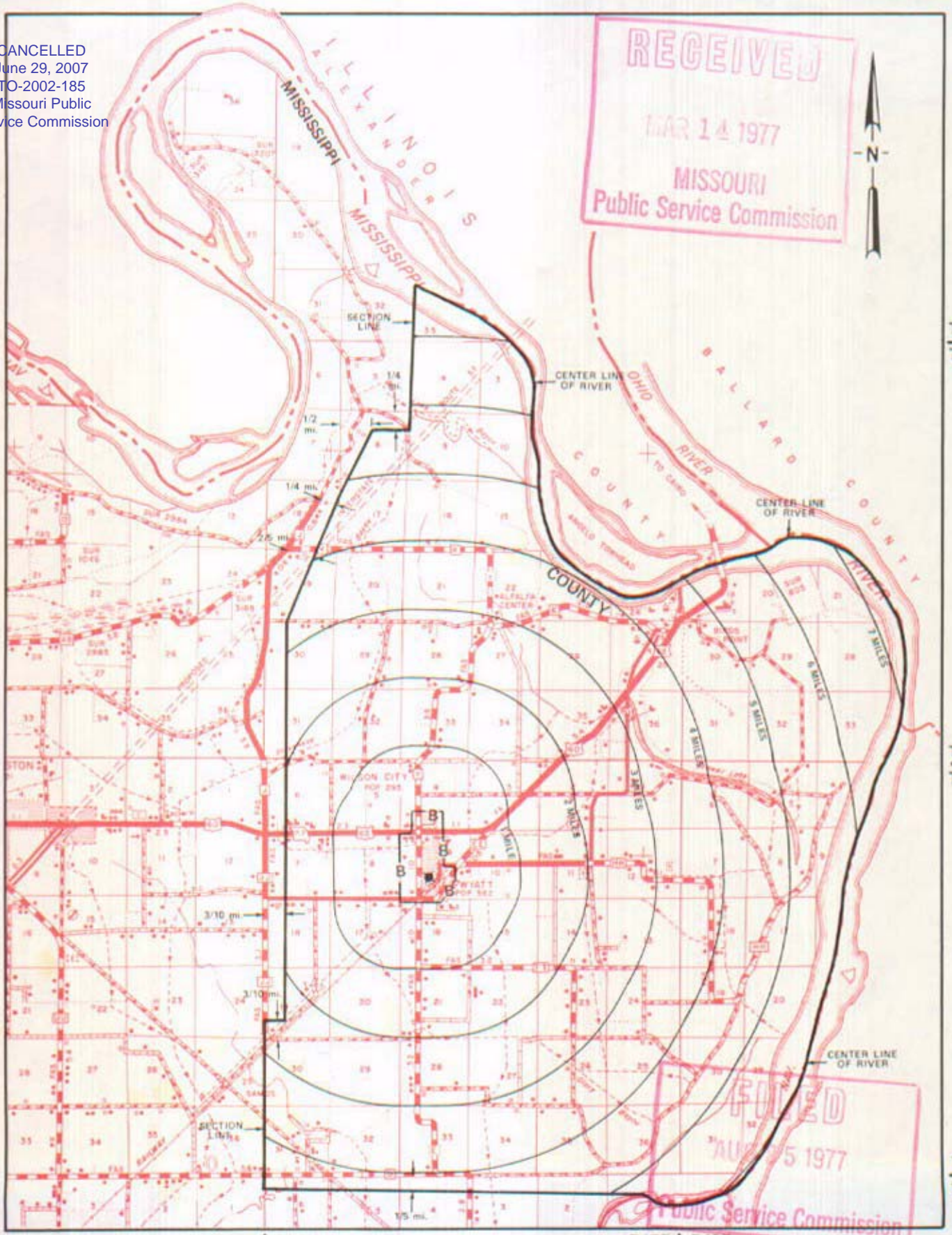
NO SUPPLEMENT TO THIS TARIFF WILL BE ISSUED EXCEPT FOR THE PURPOSE OF CANCELING THIS TARIFF.

P. S. C. Mo. No. 17
EXCHANGE AREA MAP

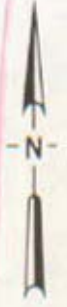
Wyatt, Missouri

2nd REVISED SHEET 3
REPLACING 1st REVISED SHEET 3

CANCELLED
June 29, 2007
TO-2002-185
Missouri Public
Service Commission



RECEIVED
MAR 14 1977
MISSOURI
Public Service Commission



T28N
T27N

T27N
T26N

T26N
T25N

R16E | R17E | R17E | R18E

By R. R. SHOCKLEY, Vice President, Missouri
Southwestern Bell Telephone Company

FOILED
AUG 25 1977
Public Service Commission