

Name of the Utility: Liberty Utilities (Missouri Water) LLC d/b/a Liberty Utilities  
Service Area: Missouri Service Areas (Northern Jefferson and Franklin Counties)

### Rules Governing Rendering of Water Service

Liberty Utilities (Missouri Water) LLC d/b/a Liberty Utilities hereby adopts, ratifies, and makes its own, in every respect, all tariffs filed with the Public Service Commission, State of Missouri, under the name Algonquin Water Resources of Missouri, LLC d/b/a Liberty Utilities, Algonquin Water Resources of Missouri, LLC d/b/a Liberty Water or KMB Utility Corporation, currently on file with and approved by the Commission, representing the rates, terms and conditions of the regulated water service previously provided by these companies or under these previous names.

- \* Indicates new rate or text
- + Indicates change

FILED  
Missouri Public  
Service Commission  
WN-2014-0035; YW-2014-0080

DATE OF ISSUE: August 15, 2013

DATE EFFECTIVE: September 14, 2013

ISSUED BY: Greg Sorensen, Vice President of Operations, 12725 W. Indian School Road, D-101.  
Avondale, AZ 85392

Name of the Utility: Algonquin Water Resources of Missouri LLC d/b/a Liberty Utilities  
Service Area: Missouri Service Areas (Northern Jefferson and Franklin Counties)

### Rules Governing Rendering of Water Service

Algonquin Water Resources of Missouri, LLC d/b/a Liberty Utilities hereby adopts, ratifies, and makes its own, in every respect, all tariffs filed with the Public Service Commission, State of Missouri, under the name Algonquin Water Resources of Missouri, LLC d/b/a Liberty Water or KMB Utility Corporation, currently on file with and approved by the Commission, representing the rates, terms and conditions of the regulated water service previously provided by these companies or under these previous names.

- \* Indicates new rate or text
- + Indicates change

FILED  
Missouri Public  
Service Commission  
WN-2012-0403; YW-2012-0779

DATE OF ISSUE: June 1, 2012

DATE EFFECTIVE: July 1, 2012

ISSUED BY: Greg Sorensen, Vice President of Operations, 12725 W. Indian School Road, D-101.  
Avondale, AZ 85392

CANCELLED  
September 14, 2013  
Missouri Public  
Service Commission  
WN-2014-0035; YW-2014-0080

Name of Utility: Algonquin Water Resources of Missouri LLC d/b/a Liberty Water  
Service Area: Missouri Service Areas (Northern Jefferson and Franklin Counties)

**Rules Governing Rendering of  
Water Service**

Algonquin Water Resources of Missouri, LLC d/b/a Liberty Water hereby adopts, ratifies, and makes it own, in every respect, all tariffs filed with the Public Service Commission, State of Missouri, under the name KMB Utility Corporation, currently on file with and approved by the Commission, representing the rates, terms and conditions of the regulated water service previously provided by KMB Utility Corporation.

\* Indicates new rate or text  
+ Indicates change

DATE OF ISSUE November 15, 2011 DATE EFFECTIVE December 15, 2011  
Month Day Year Month Day Year

ISSUED BY Greg Sorensen, Vice President of Service Delivery, 12725 W. Indian School Rd D-101, Avondale, AZ 85392  
name of officer title address

Name of the Utility: Liberty Utilities (Missouri Water) LLC d/b/a Liberty Utilities  
Service Area: Missouri Service Areas (Northern Jefferson and Franklin Counties)

**Rules Governing Rendering of  
Water Service**

**Liberty Utilities (Missouri Water) LLC**

**d/b/a**

**Liberty Utilities**

**Schedule of Rates, Rules and Regulations  
And Conditions of Service  
Governing the Provision and Taking of Water Service**

\* Indicates new rate or text  
+ Indicates change

**FILED**  
**Missouri Public**  
**Service Commission**  
**WN-2014-0035; YW-2014-0080**

DATE OF ISSUE: August 15, 2013

DATE EFFECTIVE: September 14, 2013

ISSUED BY:

Greg Sorensen, Vice President of Operations, 12725 W. Indian School Road, D-101. Avondale,  
AZ 85392

Name of the Utility: Algonquin Water Resources of Missouri LLC d/b/a Liberty Utilities  
Service Area: Missouri Service Areas (Northern Jefferson and Franklin Counties)

**Rules Governing Rendering of  
Water Service**

**Algonquin Water Resources of Missouri, LLC**  
**d/b/a**  
**Liberty Utilities**

**Schedule of Rates, Rules and Regulations  
And Conditions of Service  
Governing the Provision and Taking of Water Service**

\* Indicates new rate or text  
+ Indicates change

**CANCELLED**  
September 14, 2013  
Missouri Public  
Service Commission  
WN-2014-0035; YW-2014-0080

**FILED**  
Missouri Public  
Service Commission  
WN-2012-0403; YW-2012-0779

DATE OF ISSUE: June 1, 2012

DATE EFFECTIVE: July 1, 2012

ISSUED BY: Greg Sorensen, Vice President of Operations, 12725 W. Indian School Road, D-101. Avondale, AZ 85392

Name of Utility: Algonquin Water Resources of Missouri LLC d/b/a Liberty Water  
Service Area: Missouri Service Areas (Northern Jefferson and Franklin Counties)

<p>Rules Governing Rendering of Water Service</p>	
<p>Algonquin Water Resources of Missouri, LLC d/b/a Liberty Water</p> <p>Schedule of Rates, Rules and Regulations And Conditions of Service Governing the Provision and Taking of Water Service</p>	
<p>* Indicates new rate or text + Indicates change</p>	

DATE OF ISSUE November 15, 2011 DATE EFFECTIVE December 15, 2011  
Month Day Year Month Day Year

ISSUED BY Greg Sorensen, Vice President of Service Delivery, 12725 W. Indian School Rd D-101, Avondale, AZ 85392  
name of officer title address

KMB UTILITY CORPORATION  
Name of Issuing Corporation

For FRANCHISED AREAS  
Community, Town or City  
STATE OF MISSOURI

**RECEIVED**

TITLE PAGE

JAN 15 1991

MISSOURI  
Public Service Commission

# KMB UTILITY CORPORATION

## RATES RULES AND REGULATIONS APPLYING TO WATER SERVICE WITHIN FRANCHISED AREAS IN THE STATE OF MISSOURI

### FILED WITH THE MISSOURI PUBLIC SERVICE COMMISSION

**FILED**

FEB 15 1991  
91-52

Public Service Commission

\*Indicates new rate or text  
+Indicates change

DATE OF ISSUE JANUARY 15, 1991  
month day year

DATE EFFECTIVE FEBRUARY 15, 1991  
month day year

ISSUED BY Danny E. Dowell  
name of officer  
DANNY E. DOWELL

PRESIDENT  
title

P.O. BOX 29197  
ST. LOUIS, MO 63126  
address

**INDEX**

**RECEIVED**

Sheet No. 07 1994

<u>Title Page</u> .....	1
<u>Index</u> .....	2 MISSOURI
<u>Map of Service Area</u> .....	Public Service Commission
High Ridge Manor - Jefferson County .....	3
Crest View Acres - Franklin County .....	3A
Lakewood Hills - Jefferson County .....	3B
Hillshine Community - Franklin County .....	3C
City of Scotsdale - Jefferson County .....	3D
* Warren Woods Subdivision - Jefferson County .....	3E
<u>Legal Description of Service Area</u>	
High Ridge Manor - Jefferson County .....	4-5
Crest View Acres - Franklin County .....	5A
Lakewood Hills - Jefferson County .....	5B1-5B3
Hillshine Community - Franklin County .....	5C
City of Scotsdale - Jefferson County .....	5D
* Warren Woods Subdivision - Jefferson County .....	5E
<u>Schedule of Rates</u>	
High Ridge Manor - Jefferson County .....	6
Crest View Acres - Franklin County .....	6A
Lakewood Hills - Jefferson County .....	6B
Lakewood Hills Surcharge .....	6 B-1
Hillshine Community - Franklin County .....	6C
City of Scotsdale - Jefferson County .....	6D
* Warren Woods Subdivision - Jefferson County .....	6E
<u>Schedule of Service Charges</u> .....	
<u>Rule No.</u> 1 Definitions .....	8-9
2 General Rules and Regulations .....	10
3 Company Employees and Customer Relations .....	11
4 Applications for Service .....	12
5 Inside Piping and Customer Water Service Lines .....	13-15
6 Improper or Excessive Use .....	16-17
7 Discontinuance of Service by Company .....	18-20
8 Discontinuance of Water Service by Customer's Request .....	21
9 Interruptions in Service .....	22
10 Bills for Service .....	23-26
11 Meters and Meter Installation .....	27-29
12 Meter Tests and Test Fees .....	30
13 Bill Adjustments Based on Meter Tests .....	31
14 Extensions of Water Mains .....	32-35

**FILED**

\* Indicates new rate or text + Indicates change

MAR 25 1994  
 94-21  
 MISSOURI  
 Public Service Commission  
 MAR 25 1994

DATE OF ISSUE March 7, 1994 DATE EFFECTIVE                       
 month day year month day year

ISSUED BY Danny Edowell President P.O. Box 29197, St. Louis, MO 63126  
 DANNY E. DOWELL name of officer title address



<b>INDEX</b>		<b>Sheet No.</b>
<b>Title Page</b> .....		1
<b>Index</b> .....		2
<b>RECEIVED</b>		
<b>SEP 30 1993</b>		
<b>Map of Service Area</b>		
High Ridge Manor - Jefferson County .....		3
Crest View Acres - Franklin County .....		3A
Lakewood Hills - Jefferson County .....		3B
Hillshine Community - Franklin County .....		3C
City of Scotsdale - Jefferson County .....		3D
<b>Legal Description of Service Area</b>		
High Ridge Manor - Jefferson County .....		4-5
Crest View Acres - Franklin County .....		5A
Lakewood Hills - Jefferson County .....		5B1-5B3
Hillshine Community - Franklin County .....		5C
City of Scotsdale - Jefferson County .....		5D
<b>Schedule of Rates</b>		
High Ridge Manor - Jefferson County .....		6
Crest View Acres - Franklin County .....		6A
Lakewood Hills - Jefferson County .....		6B
* Lakewood Hills Surcharge .....		6 B-1
Hillshine Community - Franklin County .....		6C
City of Scotsdale - Jefferson County .....		6D
<b>Schedule of Service Charges</b>		
<b>Rule No.</b>		
1 Definitions .....		8-9
2 General Rules and Regulations .....		10
3 Company Employees and Customer Relations .....		11
4 Applications for Service .....		12
5 Inside Piping and Customer Water Service Lines .....		13-15
6 Improper or Excessive Use .....		16-17
7 Discontinuance of Service by Company .....		18-20
8 Discontinuance of Water Service by Customer's Request .....		21
9 Interruptions in Service .....		22
10 Bills for Service .....		23-26
11 Meters and Meter Installation .....		27-29
12 Meter Tests and Test Fees .....		30
13 Bill Adjustments Based on Meter Tests .....		31
14 Extensions of Water Mains .....		32

**CANCELLED**  
 MAR 25 1994  
 BY G. R. P. S. # 2  
 Public Service Commission  
 MISSOURI

\* Indicates new rate or text  
 + Indicates change

**FILED**  
 NOV 1 1993  
 94 - 1 11  
 MO. PUBLIC SERVICE COMM.

**KMB UTILITY CORPORATION**

For

**FRANCHISED AREAS**

Name of Issuing Corporation

Community, Town or City

**STATE OF MISSOURI**

**INDEX**

Sheet No. **RECEIVED**

<b>Title Page</b> .....	1
<b>Index</b> .....	JAN 23 1993
<b>Map of Service Area</b>	
High Ridge Manor - Jefferson County .....	MISSOURI
Crest View Acres - Franklin County .....	Public Service Commission
Lakewood Hills - Jefferson County .....	3B
Hillshine Community - Franklin County .....	3C
* City of Scotsdale - Jefferson County .....	3D
<b>Legal Description of Service Area</b>	
High Ridge Manor - Jefferson County .....	4-5
Crest View Acres - Franklin County .....	5A
Lakewood Hills - Jefferson County .....	5B1-5B3
Hillshine Community - Franklin County .....	5C
* City of Scotsdale - Jefferson County .....	5D
<b>Schedule of Rates</b>	
High Ridge Manor - Jefferson County .....	6
Crest View Acres - Franklin County .....	6A
Lakewood Hills - Jefferson County .....	6B
Hillshine Community - Franklin County .....	6C
* City of Scotsdale - Jefferson County .....	6D
<b>Schedule of Service Charges</b> .....	7
<b>Rule No.</b>	
1 Definitions .....	8-9
2 General Rules and Regulations .....	10
3 Company Employees and Customer Relations .....	11
4 Applications for Service .....	12
5 Inside Piping and Customer Water Service Lines .....	13-15
6 Improper or Excessive Use .....	16-17
7 Discontinuance of Service by Company .....	18-20
8 Discontinuance of Water Service by Customer's Request .....	21
9 Interruptions in Service .....	22
10 Bills for Service .....	23-26
11 Meters and Meter Installation .....	27-29
12 Meter Tests and Test Fees .....	30
13 Bill Adjustments Based on Meter Tests .....	31
14 Extensions of Water Mains .....	32-35
* Indicates new rate or text + Indicates change	

**CANCELLED**

NOV 01 1993  
BY S. R. S. 2  
Public Service Commission  
MISSOURI

**FILED**

MAR 12 1993

92-310

DATE OF ISSUE FEBRUARY 5, 1993 DATE EFFECTIVE MARCH 12, 1993  
month day year month day year

ISSUED BY Danny Edowell President P.O. Box 29197, St. Louis, MO 63126  
DANNY E. DOWELL name of officer title address

KMB UTILITY CORPORATION For FRANCHISED AREAS  
Name of Issuing Corporation Community, Town or City  
STATE OF MISSOURI

INDEX	<b>RECEIVED</b>
	NOV 20 1992
	<b>Sheet No. MISSOURI</b>
	<b>Public Service Commission</b>
<b>Title Page</b> .....	1
<b>Index</b> .....	2
<b>Map of Service Area</b>	
High Ridge Manor - Jefferson County .....	3
Crest View Acres - Franklin County .....	3A
Lakewood Hills - Jefferson County .....	3B
* Hillshine Community - Franklin County .....	3C
<b>Legal Description of Service Area</b>	
High Ridge Manor - Jefferson County .....	4-5
Crest View Acres - Franklin County .....	5A
Lakewood Hills - Jefferson County .....	5B1-5B3
* Hillshine Community - Franklin County .....	5C
<b>Schedule of Rates</b>	
High Ridge Manor - Jefferson County .....	6
Crest View Acres - Franklin County .....	6A
Lakewood Hills - Jefferson County .....	6B
* Hillshine Community .....	6C
<b>Schedule of Service Charges</b> .....	
<b>Rule No.</b>	
1 Definitions .....	8-9
2 General Rules and Regulations .....	10
3 Company Employees and Customer Relations .....	11
4 Applications for Service .....	12
5 Inside Piping and Customer Water Service Lines .....	13-15
6 Improper or Excessive Use .....	16-17
7 Discontinuance of Service by Company .....	18-20
8 Discontinuance of Water Service by Customer's Request .....	21
9 Interruptions in Service .....	22
10 Bills for Service .....	23-26
11 Meters and Meter Installation .....	27-29
12 Meter Tests and Test Fees .....	30
13 Bill Adjustments Based on Meter Tests .....	31
14 Extensions of Water Mains .....	32-35
* Indicates new rate or text	
+ Indicates change	

**CANCELLED**

MAR 13 1993

BY H. R.S. #2

Public Service Commission

MISSOURI

**FILED**

DEC 30 1992  
92 - 3 1 2

DATE OF ISSUE NOVEMBER 30, 1992 DATE EFFECTIVE DECEMBER 30, 1992  
month day year month day year

ISSUED BY Danny E. Dowell President P.O. Box 29197, St. Louis, MO 63126  
DANNY E. DOWELL name of officer title address

{ Revised }

{xxxxxxxx}

**KMB UTILITY CORPORATION**

For

**FRANCHISED AREAS**

Name of Issuing Corporation

Community, Town or City

**STATE OF MISSOURI**

**INDEX**

**RECEIVED**

MAY 20 1992

**MISSOURI**

Public Service Commission

**Title Page** ..... 1

**Index** ..... 2

**Map of Service Area**

High Ridge Manor - Jefferson County ..... 3

Crest View Acres - Franklin County ..... 3A

\* Lakewood Hills - Jefferson County ..... 3B

**Legal Description of Service Area**

High Ridge Manor - Jefferson County ..... 4-5

Crest View Acres - Franklin County ..... 5A

\* Lakewood Hills - Jefferson County ..... 5B1-5B3

**Schedule of Rates**

High Ridge Manor - Jefferson County ..... 6

Crest View Acres - Franklin County ..... 6A

\* Lakewood Hills - Jefferson County ..... 6B

**Schedule of Service Charges**

**Rule No.**

1 Definitions ..... 11

2 General Rules and Regulations ..... 12

3 Company Employees and Customer Relations ..... 13

4 Applications for Service ..... 14

5 Inside Piping and Customer Water Service Lines ..... 13-15

6 Improper or Excessive Use ..... 16-17

7 Discontinuance of Service by Company ..... 18-20

8 Discontinuance of Water Service by Customer's Request ..... 21

9 Interruptions in Service ..... 22

10 Bills for Service ..... 23-26

11 Meters and Meter Installation ..... 27-29

12 Meter Tests and Test Fees ..... 30

13 Bill Adjustments Based on Meter Tests ..... 31

14 Extensions of Water Mains ..... 32-35

**CANCELLED**

DEC 30 1992

BY 309 P.S.#2

Public Service Commission

**MISSOURI**

**FILED**

JUN 20 1992

92-154

MO. PUBLIC SERVICE COMM.

\* Indicates new rate or text

+ Indicates change

DATE OF ISSUE MAY 20 1992 ~~JANUARY 15 1991~~ DATE EFFECTIVE JUN 20 1992 ~~FEBRUARY 15 1991~~

month day year month day year

ISSUED BY Danny E. Dowell President P.O. Box 29197, St. Louis, MO 63126  
DANNY E. DOWELL name of officer title address

FORM NO. 13 P.S.C.MO. No. 1 1st {xxxxxxxx} SHEET No. 2  
 { Revised }  
 Cancelling P.S.C.MO. No. 1 { Original } SHEET No. 2  
 {xxxxxxxx}

KMB UTILITY CORPORATION For FRANCHISED AREAS  
 Name of Issuing Corporation Community, Town or City  
STATE OF MISSOURI

**INDEX**

**RECEIVED**  
FEB 14 1992

MO. PUBLIC SERVICE COMMISSION

<b>Title Page</b> .....	1
<b>Index</b> .....	2
<b>Map of Service Area</b>	
High Ridge Manor - Jefferson County .....	3
* Crest View Acres - Franklin County .....	3A
<b>Legal Description of Service Area</b>	
High Ridge Manor - Jefferson County .....	4-5
* Crest View Acres - Franklin County .....	5A
<b>Schedule of Rates</b>	
High Ridge Manor - Jefferson County .....	<b>CANCELLED</b> 6
* Crest View Acres - Franklin County .....	6A
<b>Schedule of Service Charges</b> .....	JUN 22 1992 7
<b>Rule No.</b>	
1 Definitions .....	8-9
2 General Rules and Regulations .....	10
3 Company Employees and Customer Relations .....	11
4 Applications for Service .....	12
5 Inside Piping and Customer Water Service Lines .....	13-15
6 Improper or Excessive Use .....	16-17
7 Discontinuance of Service by Company .....	18-20
8 Discontinuance of Water Service by Customer's Request .....	21
9 Interruptions in Service .....	22
10 Bills for Service .....	23-26
11 Meters and Meter Installation .....	27-29
12 Meter Tests and Test Fees .....	30
13 Bill Adjustments Based on Meter Tests .....	31
14 Extensions of Water Mains .....	32-35

**FILED**  
APR 14 1992  
92-122  
Public Service Commission

\* Indicates new rate or text  
+ Indicates change

DATE OF ISSUE 1/30/92 DATE EFFECTIVE APR 14 1992  
 month day year month day year

ISSUED BY Danny E. Dowell President P.O. Box 29197, St. Louis, MO 63126  
 DANNY E. DOWELL name of officer title address

KMB UTILITY CORPORATION  
Name of Issuing Corporation

For FRANCHISED AREAS  
Community, Town or City  
STATE OF MISSOURI

RECEIVED

INDEX

JAN 15 1991

MISSOURI  
Public Service Commission

Sheet No.

Title Page	1
Index	2
Map of Service Area	3
Legal Description of Service Area	4-5
Schedule of Rates	6
Schedule of Service Charges	7
Rule No.	
1	Definitions 8-9
2	General Rules and Regulations 10
3	Company Employees and Customer Relations 11
4	Applications for Service 12
5	Inside Piping and Customer Water Service Lines 13-15
6	Improper or Excessive Use 16-17
7	Discontinuance of Service by Company 18-20
8	Discontinuance of Water Service by Customer's Request 21
9	Interruptions in Service 22
10	Bills for Service 23-26
11	Meters and Meter Installation 27-29
12	Meter Tests and Test Fees 30
13	Bill Adjustments Based on Meter Tests 31
14	Extensions of Water Mains 32-35

CANCELLED

APR 16 1992

BY let R.S.

Public Service Commission  
FILED MISSOURI

FEB 15 1991  
91-52

Public Service Commission

\*Indicates new rate or text  
+Indicates change

DATE OF ISSUE JANUARY 15, 1991  
month day year

DATE EFFECTIVE FEBRUARY 15, 1991  
month day year

ISSUED BY Danny Edowell  
name of officer  
DANNY E. DOWELL

PRESIDENT  
title

P.O. BOX 29197  
ST. LOUIS, MO 63126  
address

{ Revised }

{xxxxxxxx}

**KMB UTILITY CORPORATION**

For

**FRANCHISED AREAS**

Name of Issuing Corporation

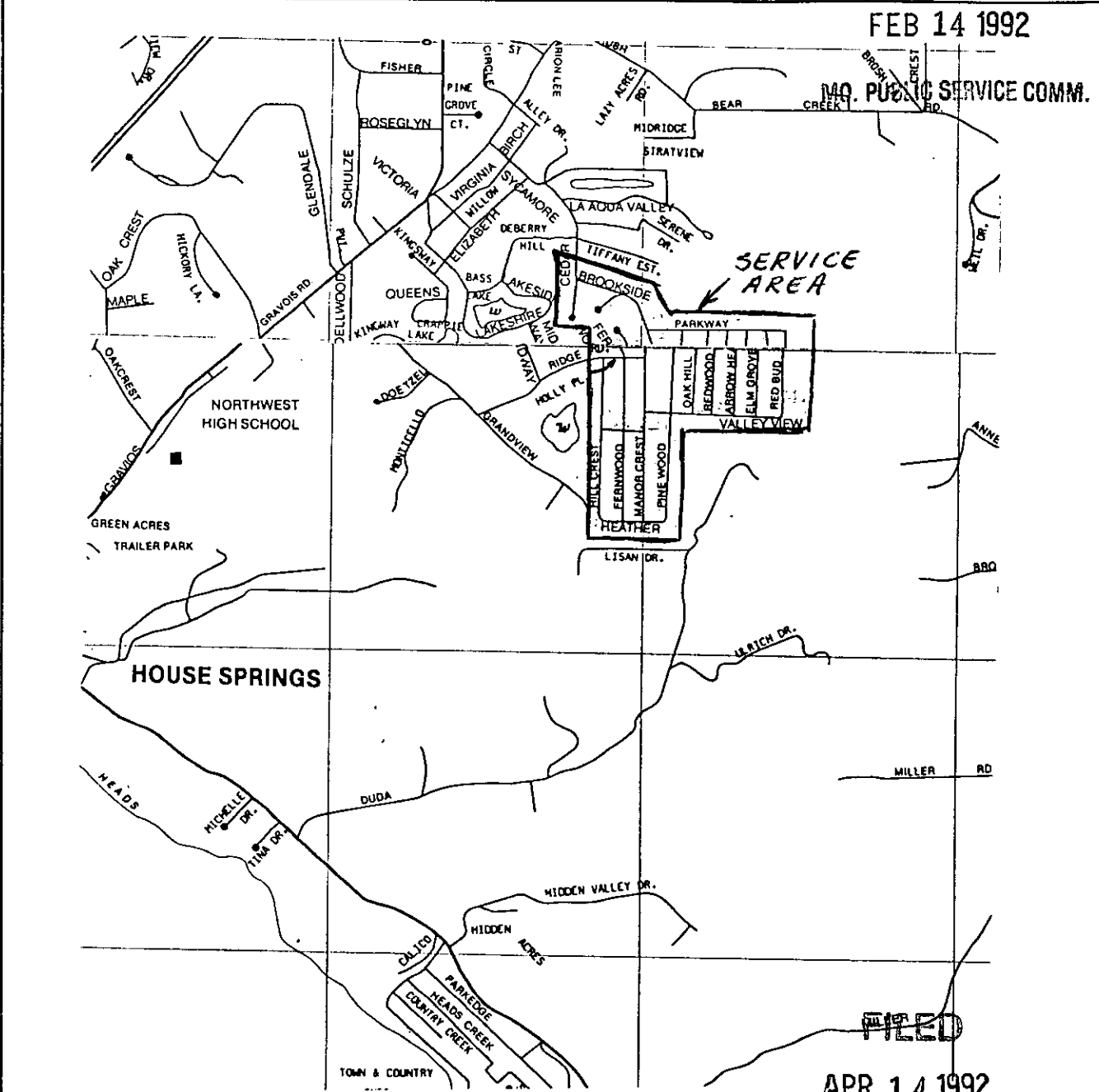
Community, Town or City

**STATE OF MISSOURI**

**MAP OF SERVICE AREA  
HIGH RIDGE MANOR (JEFFERSON COUNTY)**

**RECEIVED**

**FEB 14 1992**



\* Indicates new rate or text  
+ Indicates change

**FILED**  
**APR 14 1992**  
**92-122**  
**Public Service Commission**

DATE OF ISSUE 1/30/92

DATE EFFECTIVE 3/15/92

month day year

month day year

ISSUED BY

*Danny E. Dowell*

President P.O. Box 29197, St. Louis, MO 63126

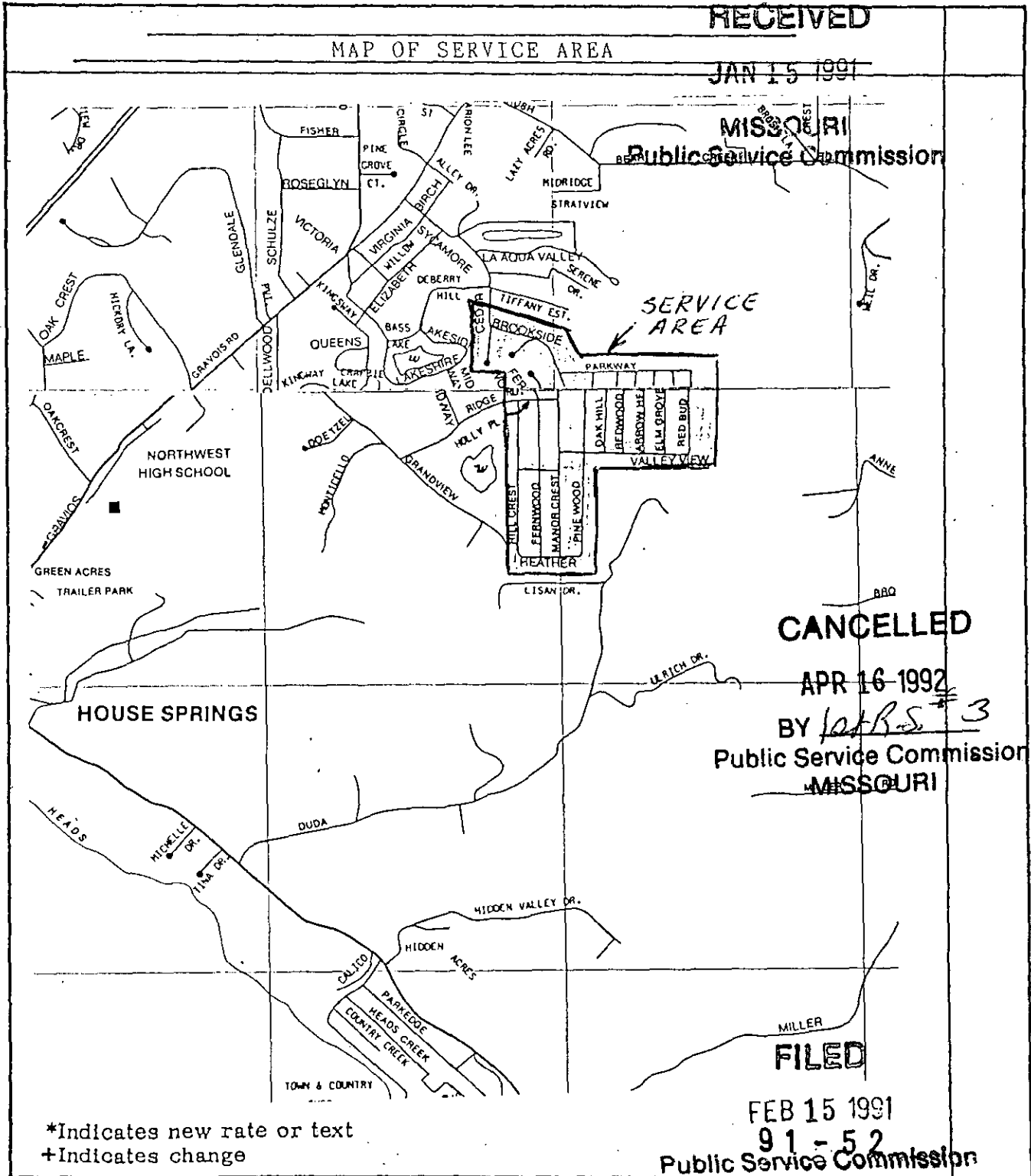
DANNY E. DOWELL name of officer

title

address

KMB UTILITY CORPORATION  
Name of Issuing Corporation

For FRANCHISED AREAS  
Community, Town or City  
STATE OF MISSOURI



DATE OF ISSUE JANUARY 15, 1991 DATE EFFECTIVE FEBRUARY 15, 1991  
month day year month day year

ISSUED BY Danny E. Dowell name of officer PRESIDENT title P.O. BOX 29197 address  
DANNY E. DOWELL title ST. LOUIS, MO 63126 address



{XXXXXXXXXX}

{ Revised }

**KMB UTILITY CORPORATION**

For \_\_\_\_\_

**FRANCHISED AREAS**

Name of Issuing Corporation

Community, Town or City

**STATE OF MISSOURI**

**MAP OF SERVICE AREA  
CREST VIEW ACRES (FRANKLIN COUNTY)**

**RECEIVED**

FEB 14 1992

WATER METER \_\_\_\_\_

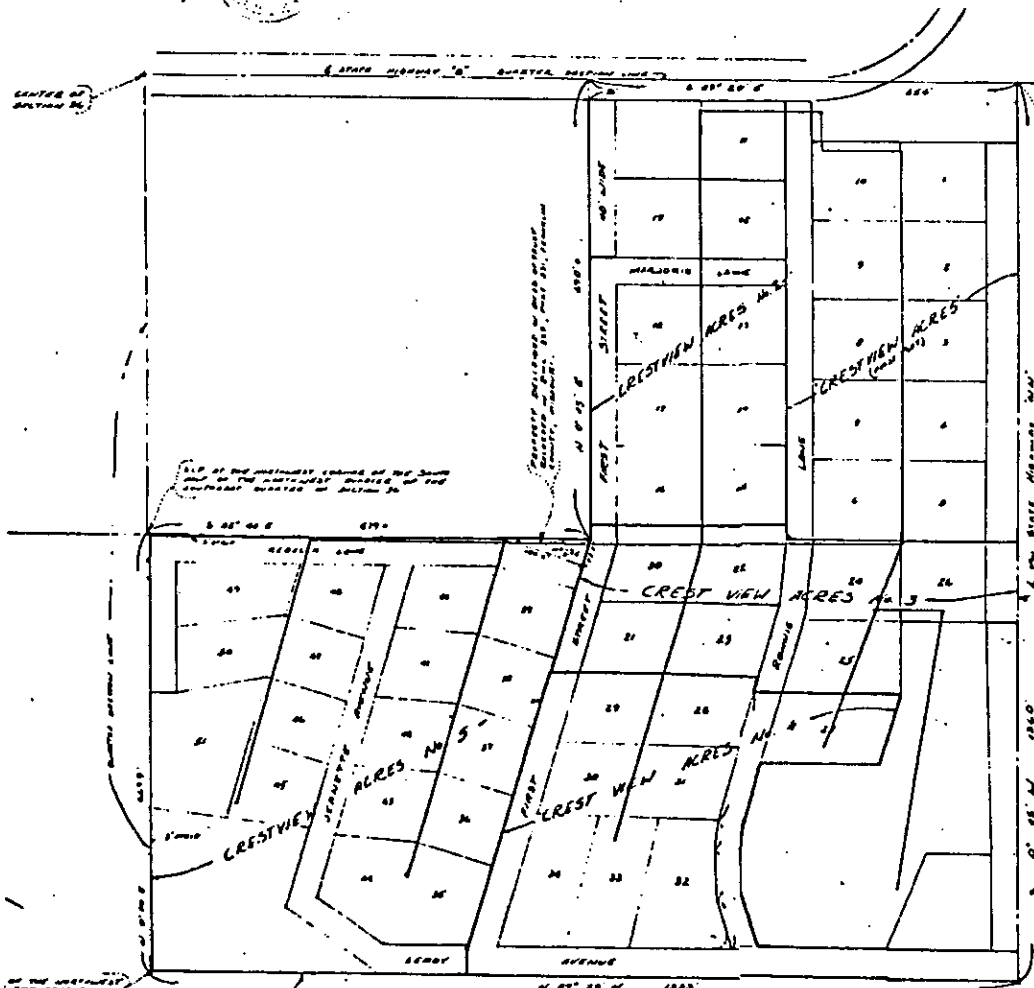
REMOVED BY 12/12/90

*[Signature]*

BY E. DOWELL JR. AS  
ENGINEER, MISSOURI  
PUBLIC SERVICE COMMISSION  
ST. LOUIS, MISSOURI 63126  
PHONE 781-6473

MISSOURI PUBLIC SERVICE COMMISSION

NO. 1000 OF THE MISSOURI STATUTES, AS AMENDED, PROVIDES THAT THE COMMISSION HAS THE SOLE AND EXCLUSIVE RIGHT TO GRANT FRANCHISES FOR THE SUPPLY OF UTILITY SERVICE.



\* Indicates new rate or text  
+ Indicates change

**FILED**

APR 14 1992  
92-122  
Public Service Commission

DATE OF ISSUE 1/30/92 DATE EFFECTIVE 2/15/92  
month day year month day year

ISSUED BY Danny Edowell President P.O. Box 29197, St. Louis, MO 63126  
DANNY E. DOWELL name of officer title address

{XXXXXXXXXX}

{ Revised }

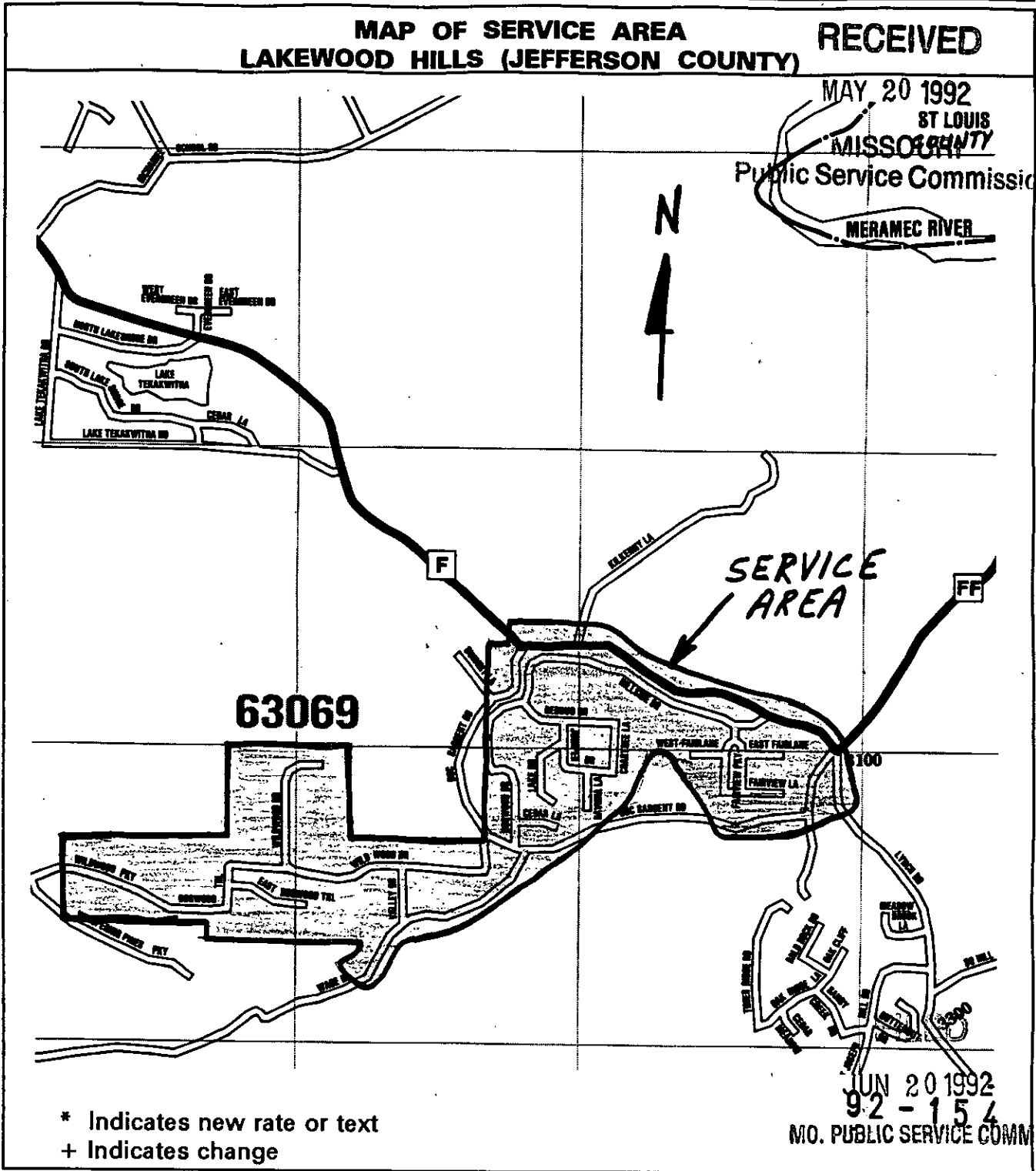
**KMB UTILITY CORPORATION** For \_\_\_\_\_

**FRANCHISED AREAS**

Name of Issuing Corporation

Community, Town or City

**STATE OF MISSOURI**



DATE OF ISSUE MAY 20 1992  
~~JANUARY 15 1991~~

DATE EFFECTIVE JUN 20 1992  
~~FEBRUARY 15 1991~~

ISSUED BY Danny E. Dowell  
DANNY E. DOWELL name of officer

President P.O. Box 29197, St. Louis, MO 63126  
address

**KMB UTILITY CORPORATION**

For \_\_\_\_\_

**FRANCHISED AREAS**

Name of Issuing Corporation

Community, Town or City

**STATE OF MISSOURI**

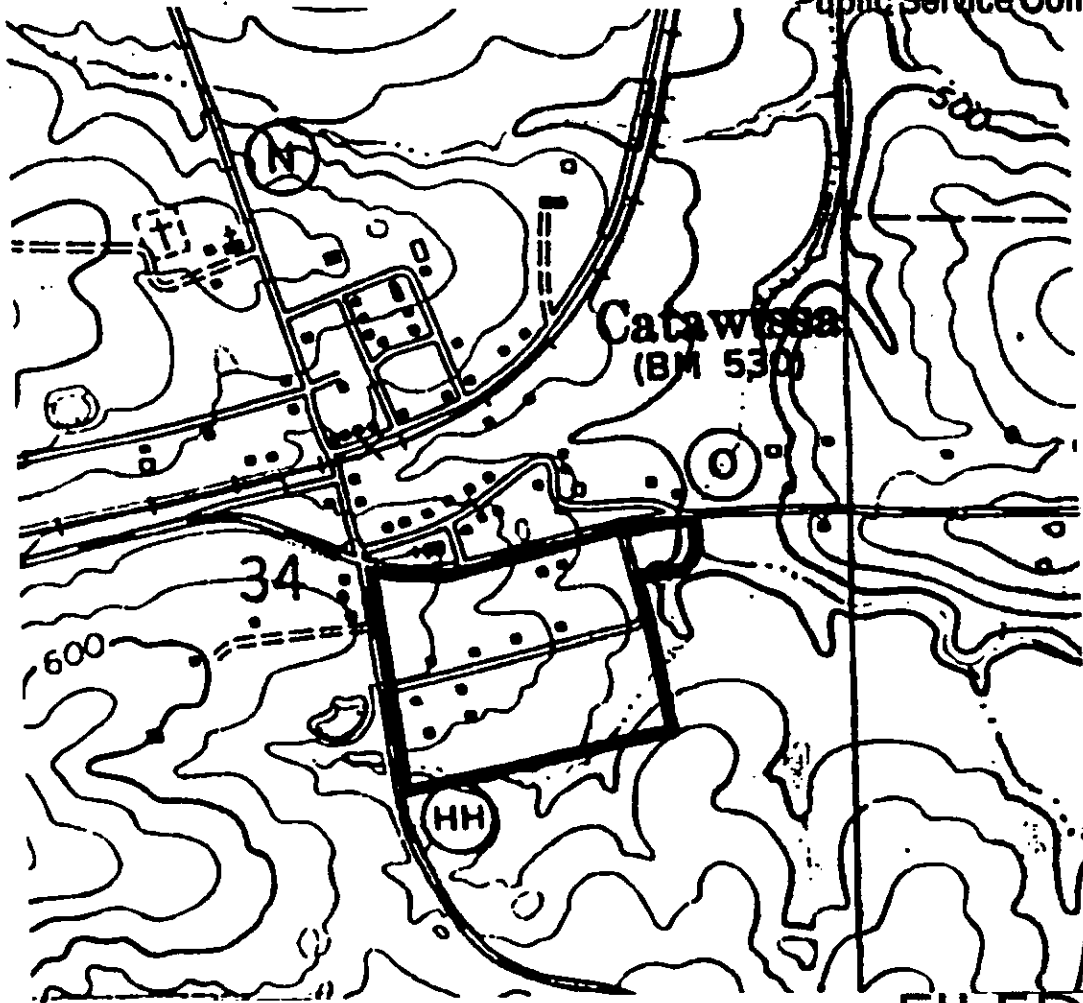
**MAP OF SERVICE AREA  
HILLSHINE COMMUNITY (FRANKLIN COUNTY)**

**RECEIVED**

NOV 20 1992

MISSOURI

Public Service Commission



**FILED**

DEC 30 1992

92 - 3 12

Public Service Commission

\* Indicates new rate or text  
+ Indicates change

DATE OF ISSUE NOVEMBER 30, 1992 DATE EFFECTIVE DECEMBER 30, 1992  
month day year month day year

ISSUED BY Danny E. Dowell President P.O. Box 29197, St. Louis, MO 63126  
DANNY E. DOWELL name of officer title address

{ xxxxxxxx }

{ Revised }

**KMB UTILITY CORPORATION** For \_\_\_\_\_

**FRANCHISED AREAS**

Name of Issuing Corporation

Community, Town or City

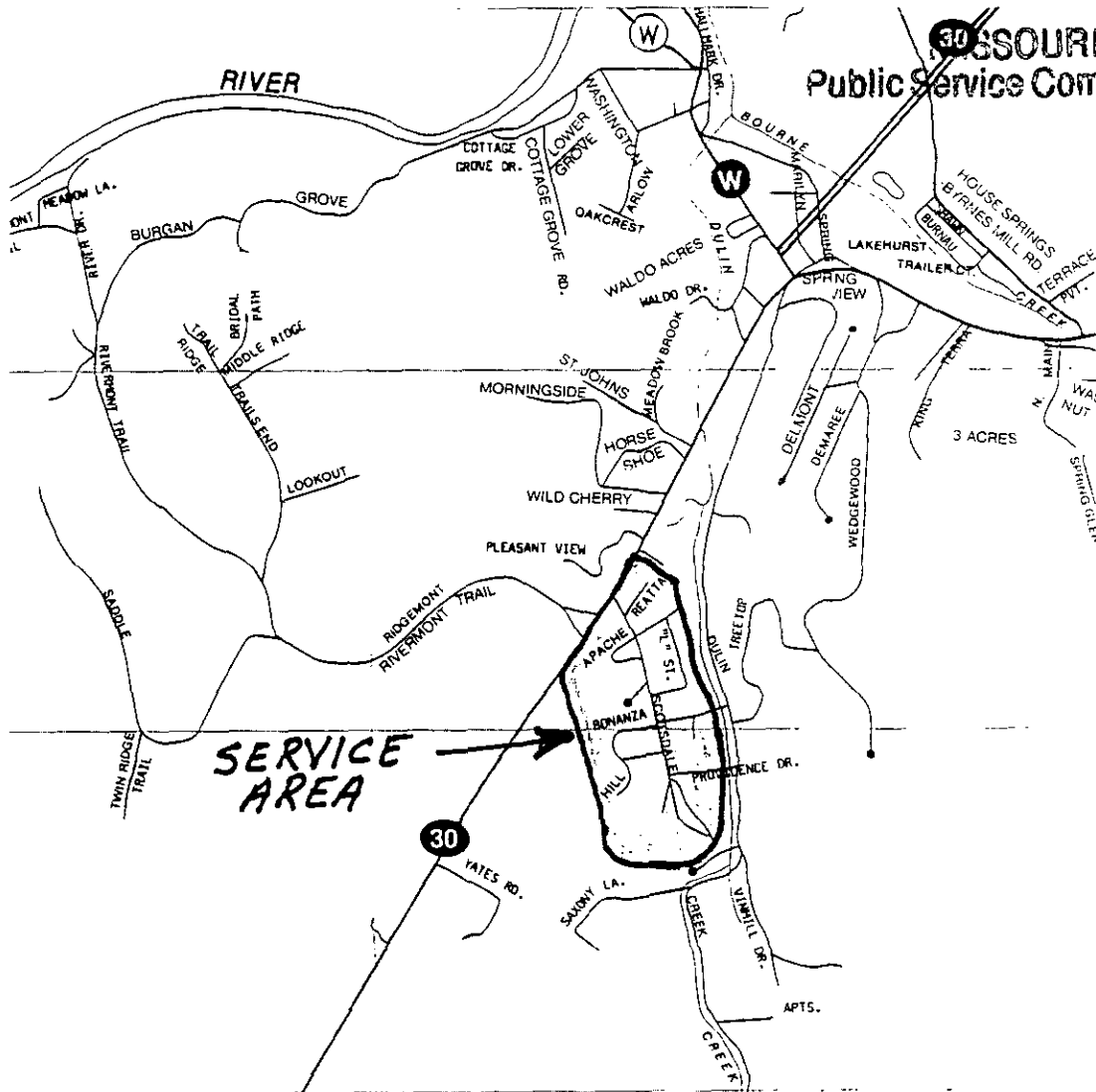
**STATE OF MISSOURI**

**MAP OF SERVICE AREA  
CITY OF SCOTSDALE (JEFFERSON COUNTY)**

**RECEIVED**

**JAN 29 1993**

**MISSOURI  
Public Service Commission**



**SERVICE AREA**

**FILED**

**MAR 12 1993**

**92 - 310**

**MO. PUBLIC SERVICE COM.**

\* Indicates new rate or text

+ Indicates change

DATE OF ISSUE FEBRUARY 5, 1993 DATE EFFECTIVE MARCH 12, 1993

month day year

month day year

ISSUED BY Danny Edowell President P.O. Box 29197, St. Louis, MO 63126

DANNY E. DOWELL name of officer title

address

**KMB UTILITY CORPORATION**

For

**FRANCHISED AREAS**

Name of Issuing Corporation

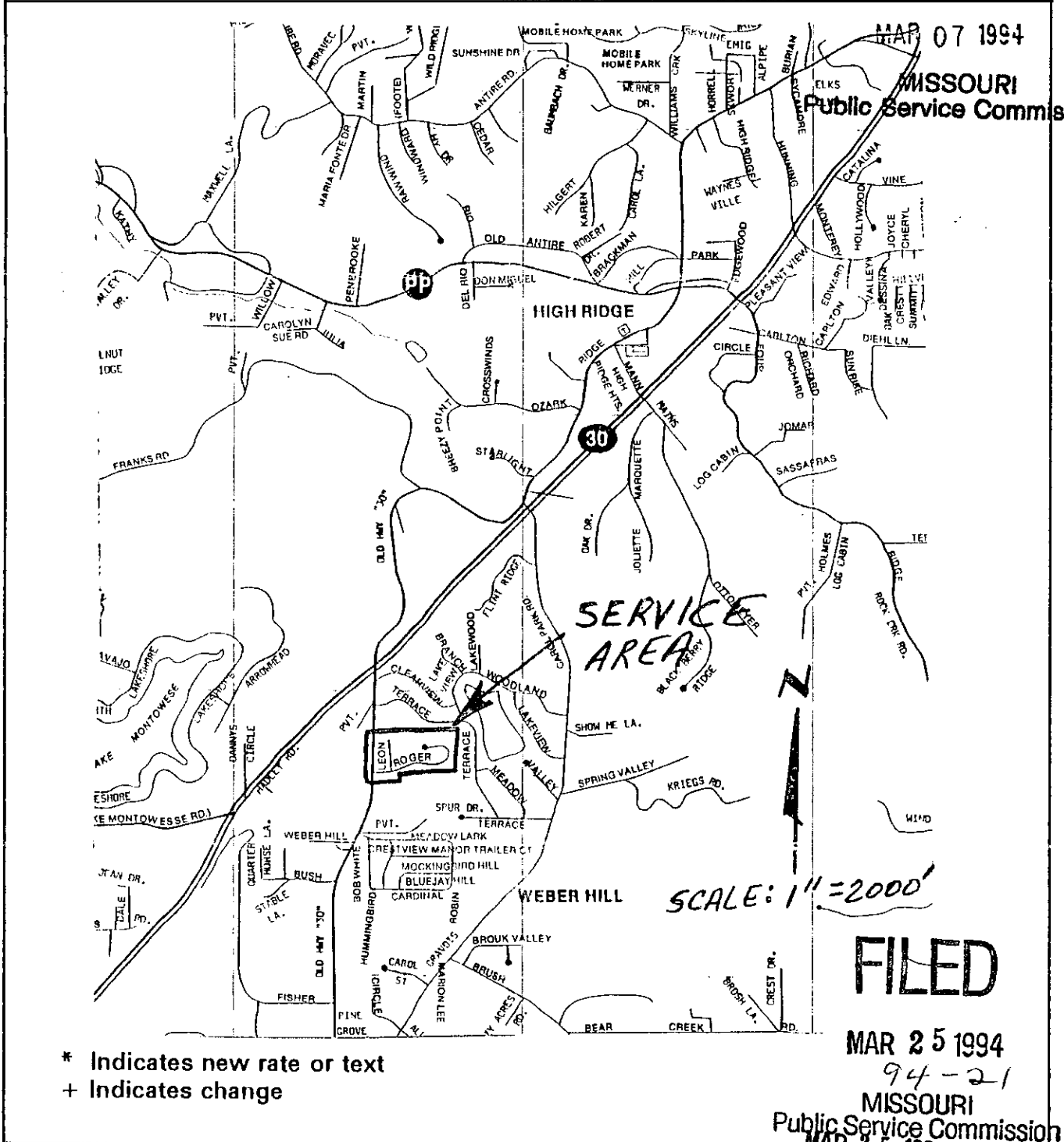
Community, Town or City

**Rules Governing Rendering of WATER Service**

**STATE OF MISSOURI**

**MAP OF SERVICE AREA  
WARREN WOODS SUBDIVISION (JEFFERSON COUNTY)**

**RECEIVED**



\* Indicates new rate or text  
 + Indicates change

**FILED**  
 MAR 25 1994  
 94-21  
 MISSOURI  
 Public Service Commission  
 MAR 25 1994

DATE OF ISSUE March 7, 1994 DATE EFFECTIVE March 7, 1994  
 month day year month day year  
 ISSUED BY Danny Dowell President P.O. Box 29197, St. Louis, MO 63126  
 DANNY E. DOWELL name of officer title address

**KMB UTILITY CORPORATION**

For

**FRANCHISED AREAS**

Name of Issuing Corporation

Community, Town or City

**STATE OF MISSOURI**

**LEGAL DESCRIPTION OF SERVICE AREA  
HIGH RIDGE MANOR (JEFFERSON COUNTY)**

**RECEIVED**

FEB 14 1992

MO. PUBLIC SERVICE COM. #

THE "RE-SUBDIVISION OF HIGH RIDGE MANOR"  
JEFFERSON COUNTY, MISSOURI  
RECORDED IN PLAT BOOK 26 PAGE 8 OF THE  
JEFFERSON COUNTY RECORDER OF DEEDS

The Northwest quarter of the Southeast quarter, and a part of the East half of the Southwest quarter, and a part of the Southeast quarter of the Northwest quarter, of Section Thirty-five (35), Township Forty-three (43) North, Range Four (4) East, described as follows: Beginning at the Southeast corner of the Southwest quarter of said Section, thence North 89 degrees 56 minutes 30 seconds West along the South line of said Section, a distance of 995.28 feet to the Southeast corner of Lot 2 of Land O' Lakes Subdivision No. 4 as platted and established, thence North 0 degrees 03 minutes 39 seconds West along the East line of Land O' Lakes Subdivision Nos. 4, 5, and No. 2 as platted and established, a distance of 2,649.06 to the Northeast corner of Lot 33 of Land O' Lakes Subdivision No. 2 as platted and established, thence South 89 degrees 30 minutes West along the North line of said Lot 33 a distance of 401.96 feet to the Northwest corner of said Lot 33, thence North 0 degrees 16 minutes West along the East line of part of Lot 19, Land O' Lakes Subdivision No. 2 and the East line of Lots 18 and 17, Land O' Lakes Subdivision No. 1, a distance of 532.40 feet to the Northeast corner of Lot 17, Land O' Lakes Subdivision No. 1, as platted and established, thence North 89 degrees 44 minutes East, a distance of 50.00 feet, thence North 0 degrees 16 minutes West a distance of 134.42 feet, thence South 37 degrees 56 minutes 50 seconds East, a distance of 158.29 feet, thence South 75 degrees 37 minutes 40 seconds East a distance of 825.14 feet, thence South 13 degrees 24 minutes 10 seconds East, a distance of 350.91 feet to a point

**FILED**

APR 14 1992  
92-122

Public Service Commission

- \* Indicates new rate or text
- + Indicates change

DATE OF ISSUE 1/30/92

DATE EFFECTIVE 2/15/92

month day year

month day year

ISSUED BY

*Danny Edowell*

President P.O. Box 29197, St. Louis, MO 63126

DANNY E. DOWELL name of officer title

address

FORM NO. 13

P.S.C.MO. No. 1

{ Original } SHEET No. 4  
{ ~~Revised~~ }

Cancelling P.S.C.MO. No. \_\_\_\_\_

{ Original } SHEET No. \_\_\_\_\_  
{ Revised }

KMB UTILITY CORPORATION  
Name of Issuing Corporation

For FRANCHISED AREAS  
Community, Town or City  
STATE OF MISSOURI

**RECEIVED**

LEGAL DESCRIPTION OF  
SERVICE AREA

**JAN 15 1991**

**MISSOURI**  
Public Service Commission

THE "RE-SUBDIVISION OF HIGH RIDGE MANOR"  
JEFFERSON COUNTY, MISSOURI  
RECORDED IN PLAT BOOK 26 PAGE 8 OF THE  
JEFFERSON COUNTY RECORDER OF DEEDS

The Northwest quarter of the Southeast quarter, and a part of the East half of the Southwest quarter, and a part of the Southeast quarter of the Northwest quarter of Section Thirty-five (35), Township Forty-three (43) North, Range Four (4) East, described as follows: Beginning at the Southeast corner of the Southwest quarter of said Section, thence North 89 degrees 56 minutes 30 seconds West along the South line of said Section, a distance of 995.28 feet to the Southeast corner of Lot 2 of Land O' Lakes Subdivision No. 4 as platted and established, thence North 0 degrees 03 minutes 39 seconds West along the East line of Land O' Lakes Subdivision Nos. 4, 5 and No. 2 as platted and established, a distance of 2,649.06 to the Northeast corner of Lot 33 of Land O' Lakes Subdivision No. 2 as platted and established, thence South 89 degrees 30 minutes West along the North line of said Lot 33 a distance of 401.96 feet to the Northwest corner of said Lot 33, thence North 0 degrees 16 minutes West along the East line of part of Lot 19, Land O' Lakes Subdivision No. 2 and the East line of Lots 18 and 17, Land O' Lakes Subdivision No. 1, a distance of 532.40 feet to the Northeast corner of Lot 17, Land O' Lakes Subdivision No. 1, as platted and established, thence North 89 degrees 44 minutes East, a distance of 50.00 feet, thence North 0 degrees 16 minutes West a distance of 134.42 feet, thence South 37 degrees 56 minutes 50 seconds East, a distance of 158.29 feet, thence South 75 degrees 37 minutes 40 seconds East a distance of 825.14 feet, thence South 13 degrees 24 minutes 10 seconds East, a distance of 350.91 feet to a point on the East and

**CANCELLED**

**FILED**

APR 16 1992

BY *LOKRS #4*

FEB 15 1991

91-52

\*Indicates new rate or text  
+Indicates change

Public Service Commission  
MISSOURI

Public Service Commission

DATE OF ISSUE JANUARY 15, 1991  
month day year

DATE EFFECTIVE FEBRUARY 15, 1991  
month day year

ISSUED BY Danny Edowell  
name of officer

PRESIDENT  
title

P.O. BOX 29197  
ST. LOUIS, MO 63126  
address

DANNY E. DOWELL

FORM NO. 13 P.S.C.MO. No. 1 1st {xxxxxxx} SHEET No. 5  
 { Revised }  
 Cancelling P.S.C.MO. No. 1 { Original } SHEET No. 5  
 {xxxxxxx}

---

**KMB UTILITY CORPORATION** For **FRANCHISED AREAS**  
 Name of Issuing Corporation Community, Town or City  
**STATE OF MISSOURI**

**LEGAL DESCRIPTION OF SERVICE AREA** FEB 14 1992  
**HIGH RIDGE MANOR (JEFFERSON COUNTY) (continued)**

MO. PUBLIC SERVICE COMM.

on the East and West centerline of said Section 35, thence North 89 degrees 20 minutes 50 seconds East along the centerline of said Section 35, a distance of 1,728.98 feet to the Northeast corner of the Northwest quarter of the Southeast quarter of said Section 35, thence South 0 degrees 23 minutes 35 seconds East along the East line of said quarter-quarter Section, a distance of 1,323.23 feet to the Southeast corner of said quarter-quarter Section, thence South 89 degrees 20 minutes 29 Seconds West along the South line of said quarter-quarter Section, a distance of 1,372.97 feet to the Southwest corner of said quarter-quarter Section, thence South 0 degrees 39 minutes 10 seconds East along the North and South centerline of said Section 35, a distance of 1,323.36 feet to the point of beginning, containing 111.84 acres.

Also: Thirty-four hundredths (0.34) of an acre, being part of Tract Three (3) of The William C. Weber Farm in Sections 34 and 35, Township 43 North, Range 4 East, plat of which is recorded in plat book 20, at page 21 of the Jefferson County Land Records, described as follows: Beginning at an iron pin in the east boundary line of said Tract Three (3), and marking the Northwest corner of Southeast quarter of the Northwest quarter of Section 35; proceed thence with the east boundary line of said Tract Three (3) North 0 degrees 35 minutes West 163.76 feet to the Southeast corner of a tract of land conveyed by Julie Weber to Eugene Skiles and wife, by deed dated October 12, 1959, recorded in book 291 at page 153 of the aforesaid records; thence with the southern boundary line of said Skiles tract South 89 degrees 19 minutes West 153.18 feet to the Southwest corner of said Skiles tract; thence South 38 degrees 30 minutes East 181.97 feet to a point in the East line of said Tract Three (3); thence North 0 degrees 25 minutes West 32.39 feet to the place of beginning.

**FILED**

APR 14 1992

92-122

Public Service Commission

APR 14 1992

\* Indicates new rate or text  
 + Indicates change

DATE OF ISSUE 1/30/92 DATE EFFECTIVE ~~2/1/92~~  
 month day year month day year

ISSUED BY Danny Edowell President P.O. Box 29197, St. Louis, MO 63126  
 DANNY E. DOWELL name of officer title address



FORM NO. 13

P.S.C.MO. No. 1

{ Original } SHEET No. 5  
{ Revised }

Cancelling P.S.C.MO. No. \_\_\_\_\_ { Original } SHEET No. \_\_\_\_\_  
{ Revised }

KMB UTILITY CORPORATION  
Name of Issuing Corporation

For FRANCHISED AREAS  
Community, Town or City

STATE OF MISSOURI

**RECEIVED**

LEGAL DESCRIPTION OF  
SERVICE AREA (Continued)

**JAN 15 1991**

**MISSOURI  
Public Service Commission**

West centerline of said Section 35, thence North 89 degrees 20 minutes 50 seconds East along the centerline of said Section 35, a distance of 1,728.98 feet to the Northeast corner of the Northwest quarter of the Southeast quarter of said Section 35, thence South 0 degrees 23 minutes 35 seconds East along the East line of said quarter-quarter Section, a distance of 1,323.23 feet to the Southeast corner of said quarter-quarter Section, thence South 89 degrees 20 minutes 29 seconds West along the South line of said quarter-quarter Section, a distance of 1,372.97 feet to the Southwest corner of said quarter-quarter Section, thence South 0 degrees 39 minutes 10 seconds East along the North and South centerline of said Section 35, a distance of 1,323.36 feet to the point of beginning, containing 111.84 acres.

Also: Thirty-four hundredths (0.34) of an acre, being part of Tract Three (3) of The William C. Weber Farm in Sections 34 and 35, Township 43 North, Range 4 East, plat of which is recorded in plat book 20, at page 21 of the Jefferson County Land Records, described as follows: Beginning at an iron pin in the east boundary line of said Tract Three (3), and marking the Northwest corner of Southeast quarter of the Northwest quarter of Section 35; proceed thence with the east boundary line of said Tract Three (3) North 0 degrees 35 minutes West 163.76 feet to the Southeast corner of a tract of land conveyed by Julie Weber to Eugene Skiles and wife, by deed dated October 12, 1959, recorded in book 291 at page 153 of the aforesaid records; thence with the southern boundary line of said Skiles tract South 89 degrees 19 minutes West 153.18 feet to the Southwest corner of said Skiles tract; thence South 38 degrees 30 minutes East 181.97 feet to a point in the East line of said Tract Three (3); thence North 0 degrees 25 minutes West 32.39 feet to the place of beginning.

**CANCELLED**

**FILED**

APR 16 1992

BY let R.S. #5

FEB 15 1991  
91-52

\*Indicates new rate or text  
+Indicates change

Public Service Commission  
**MISSOURI** Public Service Commission

DATE OF ISSUE JANUARY 15, 1991  
month day year

DATE EFFECTIVE FEBRUARY 15, 1991  
month day year

ISSUED BY Danny E. Dowell  
name of officer

PRESIDENT  
title

P.O. BOX 29197  
ST. LOUIS, MO 63126  
address

DANNY E. DOWELL

{xxxxxxxx}

{ Revised }

**KMB UTILITY CORPORATION**

For \_\_\_\_\_

**FRANCHISED AREAS**

Name of Issuing Corporation

Community, Town or City

**STATE OF MISSOURI**

**LEGAL DESCRIPTION OF SERVICE AREA**

**CREST VIEW ACRES (FRANKLIN COUNTY) RECEIVED**

FEB 14 1992

MO. PUBLIC SERVICE COMM.

**LEGAL DESCRIPTION OF  
CREST VIEW SERVICE AREA, FRANKLIN COUNTY, MISSOURI**

"A tract of land being part of the Northwest quarter of the Southeast quarter of Section 36, Township 43 North, Range 2 East, in Franklin County, Missouri, and more particularly described as follows:

Beginning at the Northeast corner of the Northwest quarter of the Southeast quarter of Section 36; thence South 0 degrees 45 minutes west along the quarter-quarter section line 1,360 feet, more or less, to the Southeast corner of the Northwest quarter of the Southeast quarter of Section 36; thence along the quarter-quarter section line North 89 degrees 20 minutes West, 1,333 feet, more or less, to the Southwest corner of the Northwest quarter of the Southeast quarter of Section 36; thence along the quarter section line North 0 degrees 50 minutes East, 669.9 feet to an O.I.P. at the Northwest corner of the South half of the Northwest quarter of the Southeast quarter of Section 36, as shown on Plat of "CREST VIEW ACRES No. 5"; thence South 88 degrees 40 minutes East, 679 feet, more of less, to the West line of First Street as recorded on Plat of "CREST VIEW ACRES No. 2"; thence North 0 degrees 45 minutes East, 690 feet, more or less to the quarter section line; thence along said quarter section line South 89 degrees 20 minutes East, 654 feet, more or less to the point of beginning, and containing 31 acres, more or less."

**FILED**

APR 14 1992  
92 - 127

Public Service Commission

- \* Indicates new rate or text
- + Indicates change

APR 14 1992

DATE OF ISSUE 1/30/92

DATE EFFECTIVE \_\_\_\_\_

month day year

month day year

ISSUED BY

*Danny E. Dowell*

President P.O. Box 29197, St. Louis, MO 63126

DANNY E. DOWELL name of officer title

address

{xxxxxxxx}

{ Revised }

**KMB UTILITY CORPORATION** For \_\_\_\_\_

**FRANCHISED AREAS**

Name of Issuing Corporation

Community, Town or City

**STATE OF MISSOURI**

**LEGAL DESCRIPTION OF SERVICE AREA RECEIVED  
LAKEWOOD HILLS (JEFFERSON COUNTY)**

MAY 20 1992

LEGAL DESCRIPTION OF **MISSOURI**  
LAKEWOOD HILLS SERVICE AREA, JEFFERSON COUNTY, MISSOURI **Public Service Commission**

All that part of the South 1/2 of Section 28, part of the North 1/2, and the Northwest 1/4 of the Southwest 1/4 in Section 33, and part of the South 1/2, and part of the Southeast 1/4 of Section 32 all in Township 43 North, Range 3 East described as follows: Beginning at an old stone marking the center of Section 32; thence North 89 degrees 29 minutes West with the quarter section line 675 feet; thence South 0 degrees 01 minute East 675.20 feet; thence South 89 degrees 30 minutes East 330.00 feet; thence South 0 degrees 01 minute East 330.00 feet; thence South 89 degrees 30 minutes East 1342.40 feet to a point; thence continuing South 89 degrees 30 minutes East to the intersection with the center line of Labarque Creek; thence with the center line of Labarque Creek in a Northeasterly direction to its intersection with the East-West quarter section line of Section 33; thence North 89 degrees 44 minutes West with said quarter section line to its intersection with the center line of Wade County Road; thence with the center of said County Road as follows: North 41 degrees 24 minutes East 52.93 feet, North 30 degrees 41 minutes East 320.73 feet, North 0 degrees 14 minutes East 24.4 feet, North 77 degrees 48 minutes East 217.39 feet, South 88 degrees 00 minutes East 175.76 feet, North 71 degrees 56 minutes East 108.45 feet, North 58 degrees 08 minutes East 209.50 feet, North 66 degrees 50 minutes East 170.89 feet, North 65 degrees 56 minutes East 298.37 feet, North 74 degrees 58 minutes East 184.68 feet and North 70 degrees 49 minutes East 113.60 feet; thence departing from said County Road North 18 degrees 53 minutes West 526.85 feet; thence North 44 degrees 46 minutes East 119.00 feet; thence North 14 degrees 43 minutes West 572.00 feet; thence South 70 degrees 00 minutes East 77.00 feet; thence South 41 degrees 20 minutes East 341.05 feet; thence South 47 degrees 00 minutes East 432.0 feet; thence South 15 degrees East 479.55 feet

**FILED**  
JUN 20 1992  
92-154  
MO. PUBLIC SERVICE COMM.

\* Indicates new rate or text

+ Indicates change

DATE OF ISSUE MAY 20 1992  
~~JANUARY 15 1991~~  
month day year

DATE EFFECTIVE JUN 20 1992  
~~FEBRUARY 15 1991~~  
month day year

ISSUED BY Danny E. Dowell President P.O. Box 29197, St. Louis, MO 63126  
DANNY E. DOWELL name of officer title address

{xxxxxxxx}

{ Revised }

**KMB UTILITY CORPORATION** For \_\_\_\_\_

**FRANCHISED AREAS**

Name of Issuing Corporation

Community, Town or City

**STATE OF MISSOURI**

**RECEIVED**

**LEGAL DESCRIPTION OF SERVICE AREA**  
**LAKWOOD HILLS (JEFFERSON COUNTY) (continued)** MAY 20 1992

to the center of the Wade County Road; thence with said County Road as follows: South 56 degrees 56 minutes East 105.04 feet; South 75 degrees 09 minutes East 210.15 feet; South 80 degrees 24 minutes East 364.00 feet; South 88 degrees 03 minutes East 131.09 feet; North 61 degrees 05 minutes East 194.66 feet; North 80 degrees 56 minutes East 131.98 feet; North 73 degrees 58 minutes East 168.20 feet; and North 84 degrees 38 minutes East 67.21 feet; thence departing from said County Road North 508.60 feet; thence North 89 degrees 58 minutes West 115.00 feet; thence North 18 degrees 15 minutes East 713.77 feet to the approximate center line of State Highway "F"; thence Westward with the approximate center of said State Highway 4,024.58 feet to the Northward extension of the center of the "Doc Sargent" County Road, from which point the Northwest corner of Section 33, Township 43 North, Range 3 East, bears South 74 degrees 25 minutes West 1,153.60 feet distant; thence departing from the center of said State Highway "F" and running with the center of said County Road as follows: South 4 degrees 35 minutes West 135.33 feet, South 21 degrees 28 minutes West 121.95 feet; and South 11 degrees 45 minutes West 61.06 feet to the North line of Section 33; thence South 89 degrees 54 minutes West with the North line of said Section 376.88 feet to an old stone marking the Northwest corner of East 1/2 of West 1/2 of the Northwest 1/4 of said section; thence South 0 degrees 06 minutes West with the West line of said East 1/2 of the West 1/2 of the Northwest 1/4 2716.00 feet to the East-West quarter section line; thence North 89 degrees 44 minutes West with said quarter section line 679.20 feet to a point in the West line of said Section 33; thence North 89 degrees 39 minutes West with the East-West quarter section line of Section 32 1344.40 feet to an old stone; thence North 0 degrees 31 minutes East 1366.40 feet to a stone pile; thence North 89 degrees 39 minutes West 1355.70 feet to an old stone in North-South quarter section line of Section 32; thence South 0 degrees 37 1/2 minutes West 1361.00 feet to the place of beginning.

MISSOURI  
Public Service Commission

**FILED**

JUN 20 1992  
92-154  
MO. PUBLIC SERVICE COMM.

- \* Indicates new rate or text
- + Indicates change

DATE OF ISSUE MAY 20 1992 DATE EFFECTIVE JUN 20 1992  
~~JANUARY 15, 1991~~ ~~FEBRUARY 15, 1991~~  
month day year month day year

ISSUED BY

*Danny E. Dowell*  
DANNY E. DOWELL name of officer

President P.O. Box 29197, St. Louis, MO 63126  
title address

FORM NO. 13

P.S.C.MO. No. 1

{ Original } SHEET No. 5B3

{xxxxxxxx}

Cancelling P.S.C.MO. No. \_\_\_\_\_

{ Original } SHEET No. \_\_\_\_\_

{ Revised }

**KMB UTILITY CORPORATION**

For \_\_\_\_\_

**FRANCHISED AREAS**

Name of Issuing Corporation

Community, Town or City

**STATE OF MISSOURI**

**LEGAL DESCRIPTION OF SERVICE AREA RECEIVED  
LAKEWOOD HILLS (JEFFERSON COUNTY) (continued)**

MAY 20 1992

Included within the above description are portions of Lakewood Hills Missouri Public Service Commission Gem Lake Addition as shown upon plat filed for record in the recorder's office of Jefferson County in plat book 27 at page 11; Lakewood Hills Crystal Lake Addition recorded in plat book 34 at page 17 and Lakewood Hills Whispering Pines Addition recorded in plat book 34 at page 19.

Also added to the above description, Lakewood Hills, Whispering Pines Addition Lots 6,7,8 and 9 and all of Lots 24,25,26,27 and 28 in Lakewood Hills, Whispering Pines Addition Plat Three of the Lakewood Hills Subdivision, Jefferson County, Missouri.

FILED

JUN 20 1992

MO. PUBLIC SERVICE COMM.

92-154

\* Indicates new rate or text  
+ Indicates change

DATE OF ISSUE MAY 20 1992  
~~DATE OF ISSUE FEBRUARY 15, 1991~~  
month day year

DATE EFFECTIVE JUN 20 1992  
~~DATE EFFECTIVE FEBRUARY 15, 1991~~  
month day year

ISSUED BY Danny Dowell President P.O. Box 29197, St. Louis, MO 63126  
DANNY E. DOWELL name of officer title address

{xxxxxxxx}

{ Revised }

**KMB UTILITY CORPORATION**

For \_\_\_\_\_

**FRANCHISED AREAS**

Name of Issuing Corporation

Community, Town or City

**STATE OF MISSOURI**

**LEGAL DESCRIPTION OF SERVICE AREA  
HILLSHINE COMMUNITY (FRANKLIN COUNTY)**

**RECEIVED**

NOV 20 1992

**MISSOURI**

Public Service Commission

LEGAL DESCRIPTION OF  
HILLSHINE COMMUNITY SERVICE AREA, FRANKLIN COUNTY, MISSOURI

The following described area located in Franklin County, Missouri (at Catawissa) and part of the North 1/2 of the Southeast 1/4 of Section 34, Range 2 East, Township 43 North. The area contained in a line beginning at Highway O and Meadow Drive North intersection, thence generally west on Highway O, 1190 feet to Highway HH, thence south on Highway HH approximately 500 feet to the intersection of Meadow Drive West and Highway HH, and thence continuing south on Highway HH another 465 feet, thence North 79 degrees 25 minutes east for 1240 feet, thence generally north 510 feet intersecting Meadow Drive, thence continuing generally north on Meadow Drive North to the Point of Beginning at the intersection of Highway O and Meadow Drive North; and also including the Catawissa Union Protestant Church located north of Highway O near the intersection of Highways O, N, and HH.

and also including: Part of the South half of the Southeast Quarter of Section 34, Township 43 north, Range 2 East of the 5th P.M., more fully described as follows: Beginning at a point in the East line of Meadow Drive, which is South 14 degrees 15 minutes East 20 feet and North 75 degrees 45 minutes East 50 feet from the Northeast corner of Lot 20 of Sunshine Acres Subdivision, thence North 75 degrees 45 minutes east to a point in the corner of a creek, thence following the centerline of said creek in a Northeastwardly direction to the intersection with the South line of Missouri Highway O, thence Westwardly on the South line of Missouri Highway O to its intersection with the east line of Meadow Drive, thence Southeastwardly on the East line of Meadow Drive to the point of beginning.

**FILED**

**DEC 30 1992**

92 - 3 1 2

Public Service Commission

\* Indicates new rate or text

+ Indicates change

DATE OF ISSUE NOVEMBER 30, 1992 DATE EFFECTIVE DECEMBER 30, 1992  
month day year month day year

ISSUED BY Danny E. Dowell President P.O. Box 29197, St. Louis, MO 63126  
DANNY E. DOWELL name of officer title address

FORM NO. 13

P.S.C.MO. No. 1

{ Original } SHEET No. 5D

{xxxxxxxx}

Cancelling P.S.C.MO. No. \_\_\_\_\_

{ Original } SHEET No. \_\_\_\_\_

{ Revised }

KMB UTILITY CORPORATION

For \_\_\_\_\_

FRANCHISED AREAS

Name of Issuing Corporation

Community, Town or City

STATE OF MISSOURI

**LEGAL DESCRIPTION OF SERVICE AREA  
CITY OF SCOTSDALE (JEFFERSON COUNTY)**

**RECEIVED**

JAN 29 1993

LEGAL DESCRIPTION OF  
CITY OF SCOTSDALE

MISSOURI  
Public Service Commission

A certain tract of real estate in the Southwest Quarter of Section Four (4), Township Forty-Two (42) North, Range 4 East, in Jefferson County Missouri. This area is platted and subdivided under the name of Scotsdale Subdivision.

**FILED**

MAR 12 1993  
92 - 3 10

MO. PUBLIC SERVICE COM. AL

\* Indicates new rate or text  
+ Indicates change

DATE OF ISSUE FEBRUARY 5, 1993  
month day year

DATE EFFECTIVE MARCH 12, 1993  
month day year

ISSUED BY Danny Edowell President P.O. Box 29197, St. Louis, MO 63126  
DANNY E. DOWELL name of officer title address

CANCELLED  
December 8, 2019  
Missouri Public  
Service Commission

FORM NO. 13 P.S.C.MO. No. 1 { Original } SHEET No. 5E  
Cancelling P.S.C.MO. No. \_\_\_\_\_ { xxxxxxxx } SHEET No. \_\_\_\_\_  
KMB UTILITY CORPORATION For FRANCHISED AREAS  
Name of Issuing Corporation Community, Town or City  
Rules Governing Rendering of WATER Service STATE OF MISSOURI

**LEGAL DESCRIPTION OF SERVICE AREA RECEIVED**  
**WARREN WOODS SUBDIVISION (JEFFERSON COUNTY)**

MAR 07 1994

Warren Woods Subdivision, a subdivision recorded in the Recorder of Deeds in Jefferson County, Missouri at Plat Book 21, Page 30 more particularly defined as follows:

Beginning at the Southwest corner of Warren Woods Subdivision, said point being along the right-of-way of Old Gravois Road and at the North line of Lot 5 of Bear Creek Subdivision; thence N 1° 56' E, 690 feet more or less to a point; thence N 89° 41' E, 1,163 feet more or less to a point; thence South, 580 feet more or less to a point; thence S 89° 26' W, 766 feet more or less to a point; thence S 0° 16' W, 104 feet more or less to a point; thence S 89° 26' W, 421 feet more or less to the point of beginning.

**FILED**

MAR 25 1994

94-21

MISSOURI  
Public Service Commission

MAR 25 1994

\* Indicates new rate or text  
+ Indicates change

DATE OF ISSUE March 7, 1994 DATE EFFECTIVE March 7, 1994  
month day year month day year  
ISSUED BY Danny Edowell President P.O. Box 29197, St. Louis, MO 63126  
DANNY E. DOWELL name of officer title address



P.S.C. MO No. 1

6th Revised Sheet No. 6

Canceling P.S.C. MO No. 1

5th Revised Sheet No. 6

KMB Utility Corporation  
Name of Issuing Company

For: High Ridge Manor (Jefferson County)  
Certificated Service Aea

**Rules Governing  
Rendering of Water Service**

**SCHEDULE OF WATER RATES**

Availability:

The following rate is applicable to all customers located in the Company's High Ridge Manor certificated service area that are adjacent to the Company's distribution mains using standard water service.

Rate Schedule:

Customer Charge	\$ 6.54 per month	+
Commodity Charge	\$ 2.44 per 1,000 gallons	+

The Customer Charge will be billed each customer monthly regardless of actual usage.

Taxes:

Any applicable Federal, State or local taxes shall be in addition to above charges.

Late Charges:

Billings will be made and distributed at monthly intervals. Bills will be rendered net, bearing the last date on which payment will then be considered delinquent. The period after which payment will then be considered delinquent is 21 days after rendition of the bill. A charge of \$5.00 or three percent (3%) per month times the unpaid balance, whichever is more, will be added to delinquent amounts.

Returned Check Charge

+

A returned check charge of \$20 per check will be paid on all checks returned from the bank for insufficient funds.

- \* Indicates New Rate or Text
- + Indicates Changed Rate or Text

**April 21, 2006**

Issue Date: January 4, 2006  
Month/Day/Year

Effective Date: February 21, 2006  
Month/Day/Year

Issued By: Ann Rudy President  
Name & Title of Issuing Officer

510 Dulin Creek Road House Springs MO 63501  
Company Mailing Address

KMB Utility Corporation For: High Ridge Manor (Jefferson County)  
Name of Issuing Company Community, Town or City

RULES GOVERNING  
RENDERING OF **WATER SERVICE** +

**SCHEDULE OF WATER RATES**

Availability: +

The following rates are applicable to all customers in the Company's High Ridge Manor certificated service area that are adjacent to the Company's distribution mains using standard water service.

Rate Schedule:

Customer Charge	\$ 8.34 per Month	+
Commodity Charge	\$ 3.11 per 1,000 gallons	+

The Customer Charge will be billed each customer monthly regardless of actual usage.\*

Taxes:

Any applicable Federal, State or local taxes shall be in addition to above charges.

Late Charges: +

Billings will be made and distributed at monthly intervals. Bills will be rendered net, bearing the last date on which payment will then be considered delinquent. The period after which the payment is considered delinquent is 21 days after rendition of the bill. A charge of \$5.00 or three percent (3%) per month times the unpaid balance, whichever is more, will be added to delinquent amounts.

Bad Check Charge: \*

A bad check charge of \$20 per check will be paid on all checks returned from the bank for insufficient funds.

\* Indicates new rate or text

+ Indicates change

Date of Issue 4/1/03

Date Effective 5/21/03

Issued By: Ann Rudy President 510 Dulin Creek Rd., House Springs MO 63501  
Name of Officer Title Address

**Cancelled**

**Filed**

**KMB UTILITY CORPORATION** For **FRANCHISED AREAS**  
Name of Issuing Corporation Community, Town or City  
**STATE OF MISSOURI**

SCHEDULE OF RATES  
HIGH RIDGE MANOR (JEFFERSON COUNTY)

**RECEIVED**

APR 16 1997

MISSOURI  
Public Service Commission

Availability:

The following rates are applicable to all customers adjacent to the Company's distribution mains using standard water service:

Rate Schedule:

Minimum Monthly Charge \$ 9.41 +  
Commodity Charge (per 1,000 gal.) \$ 3.05

**CANCELLED**

MAY 21 2003

by *SCHRS*  
Public Service Commission  
MISSOURI

Taxes:

Any applicable Federal, State, or Local Taxes shall be in addition to above charges.

Late Charges:

For any bill not paid within the period stated thereon, a late charge in the amount of \$3.00 per month, not to exceed three months or \$9.00 per customer, shall be added to the total amount due. +  
+  
+

The rates on this tariff sheet are subject to the terms and conditions of a Stipulation and Agreement approved by the Missouri Public Service Commission in Case Nos. WR-97-100 and SR-97-101. \*  
\*  
\*

**FILED**  
97-100  
APR 21 1997

97-101  
MO. PUBLIC SERVICE COMM

\* Indicates new rate or text  
+ Indicates change

DATE OF ISSUE April 16, 1997 DATE EFFECTIVE April 21, 1997

ISSUED BY *Danny E Dowell* month    day    year    President P.O. Box 403, Imperial, MO 63052  
DANNY E. DOWELL name of officer title address

FORM NO. 13

P.S.C.MO. No. 1 3rd {xxxxxxxx} SHEET No. 6

{ Revised }

Cancelling P.S.C.MO. No. 1 2nd {xxxxxxxx} SHEET No. 6

{ Revised }

KMB UTILITY CORPORATION For

FRANCHISED AREAS

Name of Issuing Corporation

Community, Town or City

STATE OF MISSOURI

**SCHEDULE OF RATES  
HIGH RIDGE MANOR (JEFFERSON COUNTY)**

**RECEIVED**

MAR 31 1995

Availability:

MISSOURI  
Public Service Commission

The following rates are applicable to all customers adjacent to the Company's distribution mains using standard water service:

Rate Schedule:

Minimum Monthly Charge \$ 8.80 +

Commodity Charge  
per 1,000 gallons \$ 3.05 +

Taxes: \*

Any applicable Federal, State, or Local Taxes shall be in addition to above charges.

**CANCELLED**

APR 21 1997  
BY H.R.S. #6  
Public Service Commission  
MISSOURI

**FILED**

MAY 22 1995  
95 - 296  
MO. PUBLIC SERVICE COMM

\* Indicates new rate or text  
+ Indicates change

DATE OF ISSUE APRIL 3, 1995 DATE EFFECTIVE MAY 22, 1995  
month day year month day year

ISSUED BY Danny E. Dowell President P.O. Box 29197, St. Louis, MO 63126  
name of officer title address

FORM NO. 13

P.S.C.MO. No. 1 2nd {xxxxxxxx} SHEET No. 6  
{ Revised }

Cancelling P.S.C.MO. No. 1 1st {xxxxxxxx} SHEET No. 6  
{ Revised }

KMB UTILITY CORPORATION For FRANCHISED AREAS  
Name of Issuing Corporation Community, Town or City

STATE OF MISSOURI

RECEIVED

**SCHEDULE OF RATES**  
**HIGH RIDGE MANOR (JEFFERSON COUNTY)**

SEP 30 1993

Availability:

MO. PUBLIC SERVICE COMM.

The following rates are applicable to all residential customers adjacent to the Company's distribution mains using standard water service:

Monthly Meter Charge \$ 8.27

Commodity Charge  
per 1,000 gallons \$ 2.65

CANCELLED

MAY 22 1995  
BY 3rd H.S.#6  
Public Service Commission  
MISSOURI

FILED

NOV 1 1993  
94-111  
MO. PUBLIC SERVICE COMM.

\* Indicates new rate or text  
+ Indicates change

DATE OF ISSUE OCTOBER 1, 1993 DATE EFFECTIVE NOVEMBER 1, 1993  
month day year month day year

ISSUED BY Danny Edowell President P.O. Box 29197, St. Louis, MO 63126  
DANNY E. DOWELL name of officer title address

**KMB UTILITY CORPORATION**

For

**FRANCHISED AREAS**

Name of Issuing Corporation

Community, Town or City

**STATE OF MISSOURI**

**SCHEDULE OF RATES  
HIGH RIDGE MANOR (JEFFERSON COUNTY)**

**RECEIVED**

Monthly Meter Charge \$ 6.96

JAN 17 1992

Commodity Charge  
per 1,000 gallons \$ 2.13

MISSOURI  
Public Service Commission

**CANCELLED**

NOV 01 1993  
BY J. R. S. # 6  
Public Service Commission  
MISSOURI

**FILED**

MAR 1 1992  
9.1 - 167  
MO. PUBLIC SERVICE COMM.

\* Indicates new rate or text  
+ Indicates change

DATE OF ISSUE FEBRUARY 1, 1992 DATE EFFECTIVE MARCH 1, 1992

month day year

month day year

ISSUED BY Danny E. Dowell President P.O. Box 29197, St. Louis, MO  
DANNY E. DOWELL name of officer title address

KMB UTILITY CORPORATION  
Name of Issuing Corporation

For FRANCHISED AREAS  
Community, Town or City

**RECEIVED**

JAN 15 1991

SCHEDULE OF RATES

MISSOURI

Public Service Commission

First 7,500 Gallons at \$1.20 Per 1,000 Gallons Per Month

All Usage After First 7,500 Gallons at \$1.00 Per 1,000 Gallons Per Month

Minimum Charge \$ 5.00 Per Month

**CANCELLED**

MAR 1 1992

BY 1st R.S. #6

Public Service Commission  
MISSOURI

**FILED**

FEB 15 1991

91 - 52

Public Service Commission

\*Indicates new rate or text  
+Indicates change

DATE OF ISSUE JANUARY 15, 1991  
month day year

DATE EFFECTIVE FEBRUARY 15, 1991  
month day year

ISSUED BY Danny E. Dowell  
name of officer  
DANNY E. DOWELL

PRESIDENT  
title

P.O. BOX 29197  
ST. LOUIS, MO 63126  
address

P.S.C. MO No. 1 Canceling P.S.C. MO No. 1 <u>KMB Utility Corporation</u> Name of Issuing Company	4th Revised Sheet No. <u>6A</u> 3rd Revised Sheet No. <u>6A</u> For: <u>Crestview Acres (Jefferson County)</u> Certificated Service Area						
<b>Rules &amp; Regulations          Rendering of Water Service</b>							
<b><u>SCHEDULE OF WATER RATES</u></b>							
<p><u>Availability:</u>          The following rate is applicable to all customers located in the Company's Crestview Acres certificated service area that are adjacent to the Company's distribution mains using standard water service.</p> <p><u>Rate Schedule:</u></p> <table style="width: 100%; border: none;"> <tr> <td style="padding-left: 20px;">Customer Charge</td> <td style="text-align: right;">\$12.45 per month</td> <td style="text-align: right;">+</td> </tr> <tr> <td style="padding-left: 20px;">Commodity Charge</td> <td style="text-align: right;">\$ 3.67 per 1,000 gallons</td> <td style="text-align: right;">+</td> </tr> </table> <p style="padding-left: 20px;">The Customer Charge will be billed each customer monthly regardless of actual usage.</p> <p><u>Taxes:</u>          Any applicable Federal, State or local taxes shall be in addition to above charges.</p> <p><u>Late Charges:</u>          Billings will be made and distributed at monthly intervals. Bills will be rendered net, bearing the last date on which payment will then be considered delinquent. The period after which payment will then be considered delinquent is 21 days after rendition of the bill. A charge of \$5.00 or three percent (3%) per month times the unpaid balance, whichever is more, will be added to delinquent amounts.</p> <p><u>Returned Check Charge</u>          A returned check charge of \$20 per check will be paid on all checks returned from the bank for insufficient funds.</p> <p style="margin-left: 20px;">* Indicates New Rate or Text          + Indicates Changed Rate or Text</p>		Customer Charge	\$12.45 per month	+	Commodity Charge	\$ 3.67 per 1,000 gallons	+
Customer Charge	\$12.45 per month	+					
Commodity Charge	\$ 3.67 per 1,000 gallons	+					

Issue Date: January 27, 2011  
 Month/Day/Year

Effective Date: February 1, 2011  
 Month/Day/Year

Issued By: Ann Rudy President  
 Name & Title of Issuing Officer

510 Dulin Creek Road House Springs MO 63501  
 Company Mailing Address



P.S.C. MO No. 1

3rd Revised Sheet No. 6A

Canceling P.S.C. MO No. 1

2nd Revised Sheet No. 6A

KMB Utility Corporation  
Name of Issuing Company

For: Crestview Acres (Franklin County)  
Certificated Service Area

**Rules Governing  
Rendering of Water Service**

**SCHEDULE OF WATER RATES**

Availability:

The following rate is applicable to all customers located in the Company's Crestview Acres certificated service area that are adjacent to the Company's distribution mains using standard water service.

Rate Schedule:

Customer Charge	\$ 8.81 per month	+
Commodity Charge	\$ 2.60 per 1,000 gallons	+

The Customer Charge will be billed each customer monthly regardless of actual usage.

Taxes:

Any applicable Federal, State or local taxes shall be in addition to above charges.

Late Charges:

Billings will be made and distributed at monthly intervals. Bills will be rendered net, bearing the last date on which payment will then be considered delinquent. The period after which payment will then be considered delinquent is 21 days after rendition of the bill. A charge of \$5.00 or three percent (3%) per month times the unpaid balance, whichever is more, will be added to delinquent amounts.

Returned Check Charge

+

A returned check charge of \$20 per check will be paid on all checks returned from the bank for insufficient funds.

\* Indicates New Rate or Text

+ Indicates Changed Rate or Text

April 21, 2006

Issue Date: January 4, 2006  
Month/Day/Year

Effective Date: February 21, 2006  
Month/Day/Year

Issued By: Ann Rudy President  
Name & Title of Issuing Officer

510 Dulin Creek Road House Springs MO 63501  
Company Mailing Address

CANCELLED  
February 1, 2011  
Missouri Public  
Service Commission  
WR-2010-0345; YW-2011-0214

WR-2006-0286

**Filed**  
Missouri Public  
Service Commission

KMB Utility Corporation For: Crestview Acres (Franklin County)  
 Name of Issuing Company Community, Town or City

RULES GOVERNING RENDERING OF WATER SERVICE		
+		
<b>SCHEDULE OF WATER RATES</b>		
<u>Availability:+</u>		
The following rates are applicable to all customers in the Company's Crestview Acres certificated service area that are adjacent to the Company's distribution mains using standard water service.		
<u>Rate Schedule:</u>		
Customer Charge	\$ 8.43 per Month	+
Commodity Charge	\$ 2.49 per 1,000 gallons	+
The Customer Charge will be billed each customer monthly regardless of actual usage.*		
<u>Taxes:</u>		
Any applicable Federal, State or local taxes shall be in addition to above charges.		
<u>Late Charges:+</u>		
Billings will be made and distributed at monthly intervals. Bills will be rendered net, bearing the last date on which payment will then be considered delinquent. The period after which the payment is considered delinquent is 21 days after rendition of the bill. A charge of \$5.00 or three percent (3%) per month times the unpaid balance, whichever is more, will be added to delinquent amounts.		
<u>Bad Check Charge: *</u>		
A bad check charge of \$20 per check will be paid on all checks returned from the bank for insufficient funds.		
* Indicates new rate or text + Indicates change		

Date of Issue 4/1/03 Date Effective 5/21/03  
 Issued By: Ann Rudy President 510 Dulin Creek Rd., House Springs MO 63501  
 Name of Officer Title Address

**Cancelled**

**KMB UTILITY CORPORATION** For **FRANCHISED AREAS**  
Name of Issuing Corporation Community, Town or City  
**STATE OF MISSOURI**

SCHEDULE OF RATES  
CRESTVIEW ACRES (FRANKLIN COUNTY)

**RECEIVED**

APR 16 1997

Availability:

MISSOURI  
Public Service Commission

The following rates are applicable to all customers adjacent to the Company's distribution mains using standard water service:

Rate Schedule:

**CANCELLED**

Minimum Monthly Charge \$ 10.14  
Commodity Charge (per 1,000 gal.) \$ 2.00

MAY 21 2003  
2nd R S 6A  
Public Service Commission  
MISSOURI +

Taxes:

Any applicable Federal, State, or Local Taxes shall be in addition to above charges. +  
+

Late Charges:

For any bill not paid within the period stated thereon, a late charge in the amount of \$3.00 per month, not to exceed three months or \$9.00 per customer, shall be added to the total amount due. +  
+  
+

The rates on this tariff sheet are subject to the terms and conditions of a Stipulation and Agreement approved by the Missouri Public Service Commission in Case Nos. WR-97-100 and SR-97-101. \*  
\*  
\*

\* Indicates new rate or text  
+ Indicates change

**FILED**  
97-100  
APR 21 1997  
97-101  
MO. PUBLIC SERVICE COMM

DATE OF ISSUE April 16, 1997 DATE EFFECTIVE April 21, 1997  
ISSUED BY Danny E. Powell President P.O. Box 403, Imperial, MO 63052  
DANNY E. POWELL name of officer title address

FORM NO. 13

P.S.C.MO. No. 1

{ Original } SHEET No. 6A

{xxxxxxxx}

Cancelling P.S.C.MO. No. \_\_\_\_\_

{ Original } SHEET No. \_\_\_\_\_

{ Revised }

KMB UTILITY CORPORATION For \_\_\_\_\_

FRANCHISED AREAS

Name of Issuing Corporation

Community, Town or City

STATE OF MISSOURI

**SCHEDULE OF RATES  
CREST VIEW ACRES (FRANKLIN COUNTY) RECEIVED**

Availability:

FEB 14 1992

The following rates are applicable to all residential customers adjacent to the Company's distribution mains using standard water service:

MO. PUBLIC SERVICE COMMISSION

Rate Schedule:

First 2,000 gallons or less per month	\$ 12.85
All over 2,000 gallons per 1,000 gallons	\$ 1.36

**CANCELLED**

APR 21 1997  
BY Let P.S. #6A  
Public Service Commission  
MISSOURI

**FILED**

APR 14 1992  
92-122  
Public Service Commission

\* Indicates new rate or text  
+ Indicates change

DATE OF ISSUE 1/30/92

DATE EFFECTIVE \_\_\_\_\_

month day year

month day year

ISSUED BY Danny E. Dowell

DANNY E. DOWELL name of officer title

President P.O. Box 29197, St. Louis, MO 63126

address

APR 14 1992

P.S.C. MO No. 1 Canceling P.S.C. MO No. 1 <u>KMB Utility Corporation</u> Name of Issuing Company	6th Revised Sheet No. <u>6B</u> 5th Revised Sheet No. <u>6B</u> For: <u>Lakewood Hills (Jefferson County)</u> Certificated Service Area						
<b>Rules &amp; Regulations          Rendering of Water Service</b>							
<b><u>SCHEDULE OF WATER RATES</u></b>							
<p><u>Availability:</u>          The following rate is applicable to all customers located in the Company's Lakeview Hills certificated service area that are adjacent to the Company's distribution mains using standard water service.</p> <p><u>Rate Schedule:</u></p> <table style="width: 100%; border: none;"> <tr> <td style="padding-left: 20px;">Customer Charge</td> <td style="text-align: right; padding-right: 20px;">\$13.53 per month</td> <td style="text-align: right;">+</td> </tr> <tr> <td style="padding-left: 20px;">Commodity Charge</td> <td style="text-align: right; padding-right: 20px;">\$ 3.51 per 1,000 gallons</td> <td style="text-align: right;">+</td> </tr> </table> <p style="padding-left: 20px;">The Customer Charge will be billed each customer monthly regardless of actual usage.</p> <p><u>Taxes:</u>          Any applicable Federal, State or local taxes shall be in addition to above charges.</p> <p><u>Late Charges:</u>          Billings will be made and distributed at monthly intervals. Bills will be rendered net, bearing the last date on which payment will then be considered delinquent. The period after which payment will then be considered delinquent is 21 days after rendition of the bill. A charge of \$5.00 or three percent (3%) per month times the unpaid balance, whichever is more, will be added to delinquent amounts.</p> <p><u>Returned Check Charge</u>          A returned check charge of \$20 per check will be paid on all checks returned from the bank for insufficient funds.</p> <p style="padding-left: 20px;">* Indicates New Rate or Text          + Indicates Changed Rate or Text</p>		Customer Charge	\$13.53 per month	+	Commodity Charge	\$ 3.51 per 1,000 gallons	+
Customer Charge	\$13.53 per month	+					
Commodity Charge	\$ 3.51 per 1,000 gallons	+					

Issue Date: January 27, 2011  
 Month/Day/Year

Effective Date: February 1, 2011  
 Month/Day/Year

Issued By: Ann Rudy President  
 Name & Title of Issuing Officer

510 Dulin Creek Road House Springs MO 63501  
 Company Mailing Address

P.S.C. MO No. 1

5th Revised Sheet No. 6B

Canceling P.S.C. MO No. 1

4th Revised Sheet No. 6B

KMB Utility Corporation  
Name of Issuing Company

For: Lakewood Hills (Jefferson County)  
Certificated Service Area

**Rules Governing  
Rendering of Water Service**

**SCHEDULE OF WATER RATES**

Availability:

The following rate is applicable to all customers located in the Company's Lakewood Hills certificated service area that are adjacent to the Company's distribution mains using standard water service.

Rate Schedule:

Customer Charge	\$12.32 per month	+
Commodity Charge	\$ 3.20 per 1,000 gallons	+

The Customer Charge will be billed each customer monthly regardless of actual usage.

Taxes:

Any applicable Federal, State or local taxes shall be in addition to above charges.

Late Charges:

Billings will be made and distributed at monthly intervals. Bills will be rendered net, bearing the last date on which payment will then be considered delinquent. The period after which payment will then be considered delinquent is 21 days after rendition of the bill. A charge of \$5.00 or three percent (3%) per month times the unpaid balance, whichever is more, will be added to delinquent amounts.

Returned Check Charge

A returned check charge of \$20 per check will be paid on all checks returned from the bank for insufficient funds.

- \* Indicates New Rate or Text
- + Indicates Changed Rate or Text

April 21, 2006

Issue Date: January 4, 2006  
Month/Day/Year

Effective Date: February 21, 2006  
Month/Day/Year

Issued By: Ann Rudy President  
Name & Title of Issuing Officer

510 Dulin Creek Road House Springs MO 63501  
Company Mailing Address

CANCELLED  
February 1, 2011  
Missouri Public  
Service Commission  
WR-2010-0345; YW-2011-0214

WR-2006-0286

**Filed**  
Missouri Public  
Service Commission

KMB Utility Corporation For: Lakewood Hills (Jefferson County)  
Name of Issuing Company Community, Town or City

RULES GOVERNING  
RENDERING OF **WATER SERVICE** +

**SCHEDULE OF WATER RATES**

Availability: +

The following rates are applicable to all customers in the Company's Lakewood Hills certificated service area that are adjacent to the Company's distribution mains using standard water service.

Rate Schedule:

Customer Charge	\$ 9.62 per Month	+
Commodity Charge	\$ 2.50 per 1,000 gallons	+

The Customer Charge will be billed each customer monthly regardless of actual usage.\*

Taxes:

Any applicable Federal, State or local taxes shall be in addition to above charges.

Late Charges: +

Billings will be made and distributed at monthly intervals. Bills will be rendered net, bearing the last date on which payment will then be considered delinquent. The period after which the payment is considered delinquent is 21 days after rendition of the bill. A charge of \$5.00 or three percent (3%) per month times the unpaid balance, whichever is more, will be added to delinquent amounts.

Bad Check Charge: \*

A bad check charge of \$20 per check will be paid on all checks returned from the bank for insufficient funds.

\* Indicates new rate or text

+ Indicates change

Date of Issue 4/1/03 Date Effective 5/21/03  
 Issued By: Ann Rudy President 510 Dulin Creek Rd., House Springs MO 63501  
 Name of Officer Title Address

**Cancelled**

**Filed**

{ Revised }

{ Revised }

**KMB UTILITY CORPORATION**

For

**FRANCHISED AREAS**

Name of Issuing Corporation

Community, Town or City

**STATE OF MISSOURI**

SCHEDULE OF RATES  
LAKEWOOD HILLS (JEFFERSON COUNTY)

**RECEIVED**

APR 16 1997

MISSOURI

Public Service Commission

Availability:

The following rates are applicable to all customers adjacent to the Company's distribution mains using standard water service:

**CANCELLED**

Rate Schedule:

Minimum Monthly Charge \$ 9.41

Commodity Charge (per 1,000 gal.) \$ 2.21

MAY 21 2003

4hrs 56B

Public Service Commission  
MISSOURI

Taxes:

Any applicable Federal, State, or Local Taxes shall be in addition to above charges.

Late Charges:

For any bill not paid within the period stated thereon, a late charge in the amount of \$3.00 per month, not to exceed three months or \$9.00 per customer, shall be added to the total amount due. +  
+  
+

The rates on this tariff sheet are subject to the terms and conditions of a Stipulation and Agreement approved by the Missouri Public Service Commission in Case Nos. WR-97-100 and SR-97-101. \*  
\*  
\*

- \* Indicates new rate or text
- + Indicates change

**FILED**  
97-100  
APR 21 1997  
97-101  
**MO. PUBLIC SERVICE COMM**

DATE OF ISSUE April 16, 1997

DATE EFFECTIVE April 21, 1997

ISSUED BY Danny E Powell President  
DANNY E. POWELL name of officer title

P.O. Box 403, Imperial, MO 63052  
address



FORM NO. 13

P.S.C.MO. No. 1 2nd {xxxxxxxx} SHEET No. 6B

Cancelling P.S.C.MO. No. 1 1st {xxxxxxxx} SHEET No. 6B

KMB UTILITY CORPORATION For FRANCHISED AREAS  
Name of Issuing Corporation Community, Town or City

STATE OF MISSOURI

**SCHEDULE OF RATES  
LAKEWOOD HILLS (JEFFERSON COUNTY)**

**RECEIVED**

MAR 31 1995

Availability:

MISSOURI  
Public Service Commission

The following rates are applicable to all customers adjacent to the Company's distribution mains using standard water service:

Rate Schedule:

Minimum Monthly Charge \$ 8.80 +

Commodity Charge \$ 1.73 +  
per 1,000 gallons

Taxes: \*

Any applicable Federal, State, or Local Taxes shall be in addition to above charges.

**CANCELLED**

APR 21 1997  
BY 3rd R.S. #6B  
Public Service Commission  
MISSOURI

**FILED**

MAY 22 1995  
95-296  
MO. PUBLIC SERVICE COMM

DATE OF ISSUE APRIL 3, 1995 DATE EFFECTIVE MAY 22, 1995  
month day year month day year

ISSUED BY Danny E. Dowell President P.O. Box 29197, St. Louis, MO 63126  
name of officer title address

FORM NO. 13

P.S.C.MO. No. 1 1st {xxxxxxxx} SHEET No. 6B

Cancelling P.S.C.MO. No. 1 { Original } SHEET No. 6B

{xxxxxxxx}

KMB UTILITY CORPORATION

For

FRANCHISED AREAS

Name of Issuing Corporation

Community, Town or City

STATE OF MISSOURI

**RECEIVED**

**SCHEDULE OF RATES  
LAKEWOOD HILLS (JEFFERSON COUNTY)**

**SEP 30 1993**

Availability:

**MO. PUBLIC SERVICE COMM.**

The following rates are applicable to all residential customers adjacent to the Company's distribution mains using standard water service:

<u>Monthly Meter Charge</u>	\$ 3.33
<u>Commodity Charge</u> per 1,000 gallons	1.11

**CANCELLED**

MAY 22 1995  
BY *[Signature]* B.S.# 6B  
Public Service Commission  
MISSOURI

**FILED**

NOV 1 1993  
94 - 1  
**MO. PUBLIC SERVICE COMM.**

\* Indicates new rate or text  
+ Indicates change

DATE OF ISSUE OCTOBER 1, 1993 DATE EFFECTIVE NOVEMBER 1, 1993  
month day year month day year

ISSUED BY *Danny E Dowell* President P.O. Box 29197, St. Louis, MO 63126  
DANNY E. DOWELL name of officer title address

FORM NO. 13

P.S.C.MO. No. 1

{ Original } SHEET No. 6B

{XXXXXXXXXX}

Cancelling P.S.C.MO. No. \_\_\_\_\_

{ Original } SHEET No. \_\_\_\_\_

{ Revised }

KMB UTILITY CORPORATION

For \_\_\_\_\_

FRANCHISED AREAS

Name of Issuing Corporation

Community, Town or City

STATE OF MISSOURI

**SCHEDULE OF RATES  
LAKEWOOD HILLS (JEFFERSON COUNTY) RECEIVED**

Availability:

MAY 20 1992

Any metered customer adjacent to Company's water distribution main using standard water service. MISSOURI Public Service Commission

Minimum charge per Quarter  
(includes 9,000 gallons of water)

\$11.98

Commodity Charge  
\$ .84 per 1,000 gallons used  
above 9,000 gallons per quarter

.84

**CANCELLED**

NOV 07 1993  
BY 1st R.S. #6B  
Public Service Commission  
MISSOURI

**FILED**

JUN 20 1992  
92-154  
MO. PUBLIC SERVICE COMM.

\* Indicates new rate or text  
+ Indicates change

DATE OF ISSUE MAY 20 1992  
~~FEBRUARY 15 1991~~  
month day year

DATE EFFECTIVE JUN 20 1992  
~~FEBRUARY 15 1991~~  
month day year

ISSUED BY Danny E. Dowell President P.O. Box 29197, St. Louis, MO 63126  
DANNY E. DOWELL name of officer title address

FORM NO. 13 P. S. C. MO. No. 1 3rd Revised Sheet No. 6B-1

Cancelling P. S. C. MO. No. 1 2nd Revised Sheet No. 6B-1

KMB Utility Corporation For: Lakewood Hills (Jefferson County)  
Name of Issuing Company Community, Town or City

RULES GOVERNING  
RENDERING OF **WATER SERVICE** +

Reserved For Future Use\*

\* Indicates new rate or text  
+ Indicates change

Date of Issue *4/1/03*

Date Effective *5/21/03*

Issued By: Ann Rudy President 510 Dulin Creek Rd., House Springs MO 63501  
Name of Officer Title Address

{ Revised }

{ Revised }

**KMB UTILITY CORPORATION**

For

**FRANCHISED AREAS**

Name of Issuing Corporation

Community, Town or City

**STATE OF MISSOURI**

**SURCHARGE RATE**

**LAKEWOOD HILLS (JEFFERSON COUNTY)**

**RECEIVED**

Monthly Surcharge for Customer:

\$5.32

**APR 16 1997**

+

**MISSOURI**

**Public Service Commission**

EIERA Loan Payment Surcharge: A monthly surcharge of \$5.32 will be added to each customer's bill. The proceeds from this surcharge will be accounted for separately from other Company funds and will be used solely for making the regular scheduled monthly principal and interest payments on the Company's EIERA loan. Any proceeds from this surcharge that are in excess of the regularly scheduled monthly EIERA loan payment will be used for the prepayment of the principal balance of the EIERA loan. In the event the proceeds from this surcharge are not sufficient to make the regularly scheduled monthly EIERA loan payment, the balance of the payment will be made using other Company funds. This surcharge will be reviewed annually and is subject to change by the Commission based upon changes in the number of customers, billing and collection history or for other such good cause as the Commission may order. This surcharge will terminate when the EIERA loan approved in Case No. WF-94-64 is paid off, or on November 1, 1998, whichever shall first occur.

**CANCELLED**

MAY 21 2003  
 By *Brek S. Bl*  
 Public Service Commission  
 MISSOURI

**FILED**  
 97-100  
 APR 21 1997  
 97-101

**MO. PUBLIC SERVICE COMM**

\* Indicates new rate or text

+ Indicates change

DATE OF ISSUE April 16, 1997

DATE EFFECTIVE April 21, 1997

ISSUED BY Danny Edowell President

P.O. Box 403, Imperial, MO 63052

DANNY E. DOWELL name of officer title

address

FORM NO. 13

P.S.C.MO. No. 1 1st { xxxxxx } SHEET No. 6B-1

{ Revised }

Cancelling P.S.C.MO. No. 1 { Original } SHEET No. 6B-1

{ xxxxxx }

KMB UTILITY CORPORATION For

FRANCHISED AREAS

Name of Issuing Corporation

Community, Town or City

STATE OF **MISSOURI**

**SURCHARGE RATE  
LAKEWOOD HILLS**

**MAY 31 1995**

Monthly Surcharge for Customer

\$ 6.00 PUBLIC SERVICE COMM.

This surcharge may be changed annually by the filing of a revision of this tariff sheet when the customer number changes significantly from 107 total customers. The surcharge will terminate when \$ 30,000 of principal has been paid on the EIERA loan or on November 1, 1998.

**CANCELLED**

APR 21 1997  
BY 2nd R.S. # 6B-1  
Public Service Commission  
MISSOURI

**FILED**  
**95 - 296**  
**JUL 1 1995**

\* Indicates new rate or text  
+ Indicates change

**MISSOURI  
Public Service Commission**

DATE OF ISSUE MAY 31, 1995 DATE EFFECTIVE JULY 1, 1995  
month day year month day year

ISSUED BY Danny Edowell President P.O. Box 29197, St. Louis, MO 63126  
DANNY E/DOWELL name of officer title address

FORM NO. 13

P.S.C.MO. No. 1

{ Original } SHEET No. 6B-1

{xxxxxxxx}

Cancelling P.S.C.MO. No. \_\_\_\_\_

{ Original } SHEET No. \_\_\_\_\_

{ Revised }

KMB UTILITY CORPORATION

For \_\_\_\_\_

FRANCHISED AREAS

Name of Issuing Corporation

Community, Town or City

STATE OF MISSOURI

**SURCHARGE RATE  
LAKEWOOD HILLS**

**RECEIVED**

Monthly Surcharge for Customer

\$ 6.10

SEP 30 1993

MO. PUBLIC SERVICE COMM.

This surcharge may be changed annually by the filing of a revision of this tariff sheet when the customer number changes significantly from the 110 total original customers. The surcharge will terminate when \$ 30,000 of principal has been paid on the EIERA loan or on November 1, 1998.

CANCELLED

JUL 11 1995  
BY let R.S. #6B1  
Public Service Commission  
MISSOURI

**FILED**

NOV 1 1993  
MO. PUBLIC SERVICE COMM.

\* Indicates new rate or text

+ Indicates change

DATE OF ISSUE OCTOBER 1, 1993  
month day year

DATE EFFECTIVE NOVEMBER 1, 1993  
month day year

ISSUED BY Danny E. Dowell  
DANNY E. DOWELL name of officer

President P.O. Box 29197, St. Louis, MO 63126  
title address

FORM NO. 13

P.S.C. MO No. 1	5th Revised Sheet No. <u>6C</u>
Canceling P.S.C. MO No. 1	4th Revised Sheet No. <u>6C</u>
<u>KMB Utility Corporation</u> Name of Issuing Company	For: <u>Hillshine Community (Jefferson County)</u> Certificated Service Area

**Rules & Regulations  
Rendering of Water Service**

**SCHEDULE OF WATER RATES**

**Availability:**

The following rate is applicable to all customers located in the Company's Hillshine Manor certificated service area that are adjacent to the Company's distribution mains using standard water service.

**Rate Schedule:**

Customer Charge	\$14.28 per month	+
Commodity Charge	\$ 2.77 per 1,000 gallons	+

The Customer Charge will be billed each customer monthly regardless of actual usage.

**Taxes:**

Any applicable Federal, State or local taxes shall be in addition to above charges.

**Late Charges:**

Billings will be made and distributed at monthly intervals. Bills will be rendered net, bearing the last date on which payment will then be considered delinquent. The period after which payment will then be considered delinquent is 21 days after rendition of the bill. A charge of \$5.00 or three percent (3%) per month times the unpaid balance, whichever is more, will be added to delinquent amounts.

**Returned Check Charge**

A returned check charge of \$20 per check will be paid on all checks returned from the bank for insufficient funds.

- \* Indicates New Rate or Text
- + Indicates Changed Rate or Text

Issue Date: January 27, 2011  
Month/Day/Year

Effective Date: February 1, 2011  
Month/Day/Year

Issued By: Ann Rudy President  
Name & Title of Issuing Officer

510 Dulin Creek Road House Springs MO 63501  
Company Mailing Address

FILED  
Missouri Public  
Service Commission  
WR-2010-0345; YW-2011-0214



P.S.C. MO No. 1

4th Revised Sheet No. 6C

Canceling P.S.C. MO No. 1

3rd Revised Sheet No. 6C

KMB Utility Corporation  
Name of Issuing Company

For: Hillshine Community (Jefferson County)  
Certificated Service Area

**Rules Governing  
Rendering of Water Service**

**SCHEDULE OF WATER RATES**

Availability:

The following rate is applicable to all customers located in the Company's Hillshine Community certificated service area that are adjacent to the Company's distribution mains using standard water service.

Rate Schedule:

Customer Charge	\$10.32 per month	+
Commodity Charge	\$ 2.00 per 1,000 gallons	+

The Customer Charge will be billed each customer monthly regardless of actual usage.

Taxes:

Any applicable Federal, State or local taxes shall be in addition to above charges.

Late Charges:

Billings will be made and distributed at monthly intervals. Bills will be rendered net, bearing the last date on which payment will then be considered delinquent. The period after which payment will then be considered delinquent is 21 days after rendition of the bill. A charge of \$5.00 or three percent (3%) per month times the unpaid balance, whichever is more, will be added to delinquent amounts.

Returned Check Charge

A returned check charge of \$20 per check will be paid on all checks returned from the bank for insufficient funds.

- \* Indicates New Rate or Text
- + Indicates Changed Rate or Text

**April 21, 2006**

Issue Date: January 4, 2006  
Month/Day/Year

Effective Date: February 21, 2006  
Month/Day/Year

Issued By: Ann Rudy President  
Name & Title of Issuing Officer

510 Dulin Creek Road House Springs MO 63501  
Company Mailing Address

KMB Utility Corporation For: Hillshine Community (Jefferson County)  
 Name of Issuing Company Community, Town or City

RULES GOVERNING RENDERING OF <b>WATER SERVICE</b> <span style="float: right;">+</span>							
<b>SCHEDULE OF WATER RATES</b>							
<p><u>Availability:</u>+</p> <p>The following rates are applicable to all customers in the Company's Hillshine Community certificated service area that are adjacent to the Company's distribution mains using standard water service.</p>							
<p><u>Rate Schedule:</u></p> <table style="width: 100%; border: none;"> <tr> <td style="padding-left: 20px;">Customer Charge</td> <td style="text-align: right;">\$ 10.11 per Month</td> <td style="text-align: right;">+</td> </tr> <tr> <td style="padding-left: 20px;">Commodity Charge</td> <td style="text-align: right;">\$ 1.96 per 1,000 gallons</td> <td style="text-align: right;">+</td> </tr> </table> <p>The Customer Charge will be billed each customer monthly regardless of actual usage.*</p>		Customer Charge	\$ 10.11 per Month	+	Commodity Charge	\$ 1.96 per 1,000 gallons	+
Customer Charge	\$ 10.11 per Month	+					
Commodity Charge	\$ 1.96 per 1,000 gallons	+					
<p><u>Taxes:</u></p> <p>Any applicable Federal, State or local taxes shall be in addition to above charges.</p>							
<p><u>Late Charges:</u>+</p> <p>Billings will be made and distributed at monthly intervals. Bills will be rendered net, bearing the last date on which payment will then be considered delinquent. The period after which the payment is considered delinquent is 21 days after rendition of the bill. A charge of \$5.00 or three percent (3%) per month times the unpaid balance, whichever is more, will be added to delinquent amounts.</p>							
<p><u>Bad Check Charge:</u> *</p> <p>A bad check charge of \$20 per check will be paid on all checks returned from the bank for insufficient funds.</p>							
<p>* Indicates new rate or text                  + Indicates change</p>							

Date of Issue 4/1/03 Date Effective 5/21/03  
 Issued By: Ann Rudy President 510 Dulin Creek Rd., House Springs MO 63501  
 Name of Officer Title Address

**Cancelled**

{ Revised }

{ Revised }

**KMB UTILITY CORPORATION**

For

**FRANCHISED AREAS**

Name of Issuing Corporation

Community, Town or City

**STATE OF MISSOURI**

SCHEDULE OF RATES  
HILLSHINE COMMUNITY (FRANKLIN COUNTY)

**RECEIVED**

APR 16 1997

MISSOURI

Public Service Commission

Availability:

The following rates are applicable to all customers adjacent to the Company's distribution mains using standard water service:

Rate Schedule:

**CANCELLED**

Minimum Monthly Charge \$ 9.41

Commodity Charge (per 1,000 gal.) \$ 2.21

MAY 21 2003

*Zrell Stoltz*  
Public Service Commission  
MISSOURI

Taxes:

Any applicable Federal, State, or Local Taxes shall be in addition to above charges.

Late Charges:

For any bill not paid within the period stated thereon, a late charge in the amount of \$3.00 per month, not to exceed three months or \$9.00 per customer, shall be added to the total amount due. + + +

The rates on this tariff sheet are subject to the terms and conditions of a Stipulation and Agreement approved by the Missouri Public Service Commission in Case Nos. WR-97-100 and SR-97-101. \* \* \*

- \* Indicates new rate or text
- + Indicates change

**FILED**  
97-100  
APR 21 1997  
97-101  
MO. PUBLIC SERVICE COMM

DATE OF ISSUE April 16, 1997

DATE EFFECTIVE April 21, 1997

ISSUED BY Danny Edowell President

P.O. Box 403, Imperial, MO 63052

DANNY E. DOWELL name of officer title

address

FORM NO. 13

P.S.C.MO. No. 1 1st {xxxxxxxx} SHEET No. 6C

{ Revised }

Cancelling P.S.C.MO. No. 1 { Original } SHEET No. 6C

{ xxxxxxx }

KMB UTILITY CORPORATION For

FRANCHISED AREAS

Name of Issuing Corporation

Community, Town or City  
STATE OF MISSOURI

**SCHEDULE OF RATES  
HILLSHINE COMMUNITY (FRANKLIN COUNTY)**

**RECEIVED**

MAR 31 1995

Availability:

MISSOURI  
Public Service Commission

The following rates are applicable to all residential customers adjacent to the Company's distribution mains using standard water service:

RATE SCHEDULE:

Minimum Monthly Charge \$ 8.80 +

Commodity Charge \$ 1.46 +  
per 1,000 gallons

Taxes: \*

Any applicable Federal, State, or Local Taxes shall be in addition to above charges.

**CANCELLED**

APR 21 1997  
BY 2nd P.S. #6C  
Public Service Commission  
MISSOURI

**FILED**

MAY 22 1995  
95 - 296  
MO. PUBLIC SERVICE COMM

\* Indicates new rate or text  
+ Indicates change

DATE OF ISSUE APRIL 3, 1995 DATE EFFECTIVE MAY 22, 1995  
month day year month day year

ISSUED BY Danny E. Dowell President P.O. Box 29197, St. Louis, MO 63126  
name of officer title address

FORM NO. 13

P.S.C.MO. No. 1

{ Original } SHEET No. 6C

{xxxxxxxx}

Cancelling P.S.C.MO. No. \_\_\_\_\_

{ Original } SHEET No. \_\_\_\_\_

{ Revised }

KMB UTILITY CORPORATION For \_\_\_\_\_

FRANCHISED AREAS

Name of Issuing Corporation

Community, Town or City

STATE OF MISSOURI

**RECEIVED**

**SCHEDULE OF RATES  
HILLSHINE COMMUNITY (FRANKLIN COUNTY)**

**NOV 20 1992**

**MISSOURI  
Public Service Commission**

Availability:

Available to any metered customer adjacent to the Company's water distribution mains using standard water service

Rate Schedule:

Minimum, includes 2000 gallons per month \$ 7.26

Over 2000 gallons per month per 1000 gallons \$ 1.36

Any applicable Federal, State or local taxes computed on billing basis shall be added as separate items in rendering each bill.

Delayed Payment Clause:

For a bill not paid within the period stated thereon, a charge of 8% per annum will be added.

**CANCELLED**

MAY 22 1995  
BY 1st A.S. #6C  
Public Service Commission  
MISSOURI

**FILED**

**DEC 30 1992**

**92 - 3 1 2**

**Public Service Commission**

\* Indicates new rate or text  
+ Indicates change

DATE OF ISSUE NOVEMBER 30, 1992 DATE EFFECTIVE DECEMBER 30, 1992  
month day year month day year

ISSUED BY Danny E. Dowell President P.O. Box 29197, St. Louis, MO 63126  
DANNY E. DOWELL name of officer title address

P.S.C. MO No. 1	5th Revised Sheet No. <u>6D</u>
Canceling P.S.C. MO No. 1	4th Revised Sheet No. <u>6D</u>
<u>KMB Utility Corporation</u> Name of Issuing Company	For: <u>Town of Scotsdale (Jefferson County)</u> Certificated Service Area

**Rules & Regulations  
Rendering of Water Service**

**SCHEDULE OF WATER RATES**

**Availability:**

The following rate is applicable to all customers located in the Company's Town of Scotsdale certificated service area that are adjacent to the Company's distribution mains using standard water service.

**Rate Schedule:**

Customer Charge	
Residential Service	\$42.42 per month
Commercial Service	\$51.48 per month
Commodity Charge	\$5.52 per 1,000 gallons in excess of 10,000 a month

The Customer Charge will be billed each customer monthly regardless of actual usage.

**Taxes:**

Any applicable Federal, State or local taxes shall be in addition to above charges.

**Late Charges:**

Billings will be made and distributed at monthly intervals. Bills will be rendered net, bearing the last date on which payment will then be considered delinquent. The period after which payment will then be considered delinquent is 21 days after rendition of the bill. A charge of \$5.00 or three percent (3%) per month times the unpaid balance, whichever is more, will be added to delinquent amounts.

**Returned Check Charge**

A returned check charge of \$20 per check will be paid on all checks returned from the bank for insufficient funds.

- \* Indicates New Rate or Text
- + Indicates Changed Rate or Text

Issue Date: January 27, 2011  
Month/Day/Year

Effective Date: February 1, 2011  
Month/Day/Year

Issued By: Ann Rudy President  
Name & Title of Issuing Officer

510 Dulin Creek Road House Springs MO 63501  
Company Mailing Address

FILED  
Missouri Public  
Service Commission  
WR-2010-0345; YW-2011-0214

P.S.C. MO No. 1  
Canceling P.S.C. MO No. 1

4th Revised Sheet No. 6D  
3rd Revised Sheet No. 6D

KMB Utility Corporation  
Name of Issuing Company

For: Town of Scotsdale (Jefferson County)  
Certificated Service Area

**Rules Governing  
Rendering of Water Service**

**SCHEDULE OF WATER RATES**

Availability:

The following rate is applicable to all customers located in the Company's Town of Scotsdale certificated service area that are adjacent to the Company's distribution mains using standard water service.

Rate Schedule:

Customer Charge		
Residential Service	\$30.22 per month	+
Commercial Service	\$36.67 per month	+
Commodity Charge	\$ 3.93 per 1,000 gallons for all gallons in excess of 10,000 a month	

The Customer Charge will be billed each customer monthly regardless of actual usage.

Taxes:

Any applicable Federal, State or local taxes shall be in addition to above charges.

Late Charges:

Billings will be made and distributed at monthly intervals. Bills will be rendered net, bearing the last date on which payment will then be considered delinquent. The period after which payment will then be considered delinquent is 21 days after rendition of the bill. A charge of \$5.00 or three percent (3%) per month times the unpaid balance, whichever is more, will be added to delinquent amounts.

Returned Check Charge

A returned check charge of \$20 per check will be paid on all checks returned from the bank for insufficient funds.

\* Indicates New Rate or Text

+ Indicates Changed Rate or Text

Issue Date: January 4, 2006  
Month/Day/Year

Effective Date: April 21, 2006  
February 21, 2006  
Month/Day/Year

Issued By: Ann Rudy President  
Name & Title of Issuing Officer

510 Dulin Creek Road House Springs MO 63501  
Company Mailing Address

KMB Utility Corporation For: Town Of Scotsdale (Jefferson County)  
Name of Issuing Company Community, Town or City

RULES GOVERNING  
RENDERING OF WATER SERVICE +

SCHEDULE OF WATER RATES

Availability:+

The following rates are applicable to all customers in the Company's Town of Scotsdale certificated service area that are adjacent to the Company's distribution mains using standard water service.

Rate Schedule:

Customer Charge			
Residential Service	\$ 31.50	per Month	+
Commercial Service	\$ 38.22	per Month	+
Commodity Charge	\$ 4.10	per 1,000 gallons for all gallons in excess of 10,000 a month	+

The Customer Charge will be billed each customer monthly regardless of actual usage.\*

Taxes:

Any applicable Federal, State or local taxes shall be in addition to above charges.

Late Charges:+

Billings will be made and distributed at monthly intervals. Bills will be rendered net, bearing the last date on which payment will then be considered delinquent. The period after which the payment is considered delinquent is 21 days after rendition of the bill. A charge of \$5.00 or three percent (3%) per month times the unpaid balance, whichever is more, will be added to delinquent amounts.

Bad Check Charge: \*

A bad check charge of \$20 per check will be paid on all checks returned from the bank for insufficient funds.

\* Indicates new rate or text  
+ Indicates change

Date of Issue 4/1/03

Date Effective 5/21/03

Issued By: Ann Rudy President 510 Dulin Creek Rd., House Springs MO 63501  
Name of Officer Title Address

**Cancelled**

**Filed**



**SCHEDULE OF RATES**  
**TOWN OF SCOTSDALE (JEFFERSON COUNTY)**

**RECEIVED**

APR 16 1997

MISSOURI  
Public Service Commission

Availability:  
 The following rates are applicable to all customers adjacent to the Company's distribution mains using standard water service:

Rate Schedule:

Residential Service	\$ 31.49	
Commercial Service	\$ 44.99	
\$4.50 per 1,000 gallons in excess of 10,000 gallons per month		

**CANCELLED**

MAY 21 2003  
by Brad R. SLD  
Public Service Commission  
MISSOURI

Taxes:  
 Any applicable Federal, State, or Local Taxes shall be in addition to above charges.

Late Charges:  
 For any bill not paid within the period stated thereon, a late charge in the amount of \$3.00 per month, not to exceed three months or \$9.00 per customer, shall be added to the total amount due.

The rates on this tariff sheet are subject to the terms and conditions of a Stipulation and Agreement approved by the Missouri Public Service Commission in Case Nos. WR-97-100 and SR-97-101.

**FILED**  
97-100  
APR 21 1997  
97-101  
MO. PUBLIC SERVICE COMM

\* Indicates new rate or text  
 + Indicates change

FORM NO. 13

P.S.C.MO. No. 1 1st {xxxxxxxx} SHEET No. 6D

Cancelling P.S.C.MO. No. 1 { Original } SHEET No. 6D

{xxxxxxxx}

**KMB UTILITY CORPORATION**

For

**FRANCHISED AREAS**

Name of Issuing Corporation

Community, Town or City

**STATE OF MISSOURI**

**SCHEDULE OF RATES**

**TOWN OF SCOTSDALE (JEFFERSON COUNTY)**

**RECEIVED**

MAR 31 1995

Availability:

MISSOURI  
Public Service Commission

The following rates are applicable to all customers adjacent to the Company's distribution mains using standard water service:

Rate Schedule:

Residential Service \$ 26.66 +

Commercial Service \$ 38.08 +

\$ 3.81 per 1,000 gallons in excess of 10,000 gallons per month. +

Taxes: \*

Any applicable Federal, State, or Local Taxes shall be in addition to above charges.

**CANCELLED**

APR 21 1997  
BY 2nd R.S. # 6D  
Public Service Commission  
MISSOURI

**FILED**

MAY 22 1995  
95-296

MO. PUBLIC SERVICE COMM

\* Indicates new rate or text

+ Indicates change

DATE OF ISSUE APRIL 3, 1995 DATE EFFECTIVE MAY 22, 1995  
month day year month day year

ISSUED BY Danny E. Dowell President P.O. Box 29197, St. Louis, MO 63126  
name of officer title address

FORM NO. 13

P.S.C.MO. No. 1

{ Original } SHEET No. 6D

{XXXXXXXXXX}

Cancelling P.S.C.MO. No. \_\_\_\_\_

{ Original } SHEET No. \_\_\_\_\_

{ Revised }

**KMB UTILITY CORPORATION**

For \_\_\_\_\_

**FRANCHISED AREAS**

Name of Issuing Corporation

Community, Town or City

**STATE OF MISSOURI**

**RECEIVED**

**SCHEDULE OF RATES  
CITY OF SCOTSDALE (JEFFERSON COUNTY) JAN 23 1993**

Availability:

**MISSOURI  
Public Service Commission**

This schedule is available to any customer adjacent to the company's water distribution main.

Rate Schedule:

Residential Service ..... \$ 20.89 per month

Commercial Service ..... \$ 24.14 per month

\$ 2.43 per 1,000 gallons in excess of 10,000 gallons per month.

Taxes:

Any applicable Federal, State or Local taxes computed on billing basis shall be added as separate items in rendering each bill.

Delayed Payment Clause:

Statements shall be rendered within five (5) days after the close of each month and are due on the date received and shall be considered delinquent twenty-one (21) days thereafter.

**CANCELLED**

MAY 22 1995  
BY 1st A.S. # 6D  
Public Service Commission  
MISSOURI

**FILED**

MAR 12 1993  
92 - 3 1 0  
MO. PUBLIC SERVICE COM. MA.

\* Indicates new rate or text  
+ Indicates change

DATE OF ISSUE FEBRUARY 5, 1993 DATE EFFECTIVE MARCH 12, 1993  
month day year month day year

ISSUED BY Danny Edowell President P.O. Box 29197, St. Louis, MO 63126  
DANNY E. DOWELL name of officer title address

P.S.C. MO No. 1 Canceling P.S.C. MO No. 1 <u>KMB Utility Corporation</u> Name of Issuing Company	4th Revised Sheet No. <u>6E</u> 3rd Revised Sheet No. <u>6E</u> For: <u>Warren Woods Subdivision (Jefferson County)</u> Certificated Service Area						
<b>Rules &amp; Regulations          Rendering of Water Service</b>							
<b><u>SCHEDULE OF WATER RATES</u></b>							
<p><u>Availability:</u>          The following rate is applicable to all customers located in the Company's Warren Woods Subdivision certificated service area that are adjacent to the Company's distribution mains using standard water service.</p> <p><u>Rate Schedule:</u></p> <p><u>Metered Rate (when available)</u></p> <table style="width: 100%; border: none;"> <tr> <td style="padding-left: 20px;">Customer Charge</td> <td style="padding-left: 20px;">\$23.39 per month</td> <td style="text-align: right;">+</td> </tr> <tr> <td style="padding-left: 20px;">Commodity Charge</td> <td style="padding-left: 20px;">\$ 5.29 per 1,000 gallons</td> <td style="text-align: right;">+</td> </tr> </table> <p><u>Taxes:</u>          Any applicable Federal, State or local taxes shall be in addition to above charges.</p> <p><u>Late Charges:</u>          Billings will be made and distributed at monthly intervals. Bills will be rendered net, bearing the last date on which payment will then be considered delinquent. The period after which payment will then be considered delinquent is 21 days after rendition of the bill. A charge of \$5.00 or three percent (3%) per month times the unpaid balance, whichever is more, will be added to delinquent amounts.</p> <p><u>Returned Check Charge</u>          A returned check charge of \$20 per check will be paid on all checks returned from the bank for insufficient funds.</p> <p>* Indicates New Rate or Text          + Indicates Changed Rate or Text</p>		Customer Charge	\$23.39 per month	+	Commodity Charge	\$ 5.29 per 1,000 gallons	+
Customer Charge	\$23.39 per month	+					
Commodity Charge	\$ 5.29 per 1,000 gallons	+					

Issue Date: January 27, 2011  
 Month/Day/Year

Effective Date: February 1, 2011  
 Month/Day/Year

Issued By: Ann Rudy President  
 Name & Title of Issuing Officer

510 Dulin Creek Road House Springs MO 63501  
 Company Mailing Address

**FILED**  
 Missouri Public  
 Service Commission  
 WR-2010-0345; YW-2011-0214

P.S.C. MO No. 1

3rd Revised Sheet No. 6E

Canceling P.S.C. MO No. 1

2nd Revised Sheet No. 6E

KMB Utility Corporation  
Name of Issuing Company

For: Warren Woods Subdivision (Jefferson County)  
Certificated Service Area

**Rules Governing  
Rendering of Water Service**

**SCHEDULE OF WATER RATES**

Applicability +

The following rates are applicable to customers in the Company's Warren Woods Subdivision certificated service area that are located adjacent to the Company's distribution mains and that are using standard water service. +

Rate Schedule

Metered Rate (when available) \*

Customer Charge	\$12.92 per month	*
Commodity Charge	\$ 2.92 per 1,000 gallons	*

Non-Metered Rate \*

Monthly Flat Rate + \$38.51 per month +

Taxes

Any applicable Federal, State or local taxes shall be in addition to above charges.

Late Charges

Billings will be made and distributed at monthly intervals. Bills will be rendered net, bearing the last date on which payment will then be considered delinquent. The period after which payment will then be considered delinquent is 21 days after rendition of the bill. A charge of \$5.00 or three percent (3%) per month times the unpaid balance, whichever is more, will be added to delinquent amounts.

Returned Check Charge +

A returned check charge of \$20 per check will be charged for all checks returned from the bank for insufficient funds. +

\* Indicates New Rate or Text  
+ Indicates Changed Rate or Text

Issue Date: January 4, 2006  
Month/Day/Year

Effective Date: April 21, 2006  
February 21, 2006  
Month/Day/Year

Issued By: Ann Rudy - President  
Name & Title of Issuing Officer

5108 Dulin Creek Road House Springs MO 63501  
Company Mailing Address

CANCELLED  
February 1, 2011  
Missouri Public  
Service Commission  
WR-2010-0345; YW-2011-0214

WR-2006-0286

**Filed**  
Missouri Public  
Service Commission

KMB Utility Corporation For: Warren Woods Subdivision (Jefferson County)  
Name of Issuing Company Community, Town or City

RULES GOVERNING  
RENDERING OF **WATER SERVICE** +

**SCHEDULE OF WATER RATES**

Availability:+

The following rates are applicable to all customers in the Company's Warren Woods Subdivision certificated service area that are adjacent to the Company's distribution mains using standard water service.

Rate Schedule:

Customer Charge \$ 38.13 per Month +

The Customer Charge will be billed each customer monthly regardless of actual usage.\*

Taxes:

Any applicable Federal, State or local taxes shall be in addition to above charges.

Late Charges:+

Billings will be made and distributed at monthly intervals. Bills will be rendered net, bearing the last date on which payment will then be considered delinquent. The period after which the payment is considered delinquent is 21 days after rendition of the bill. A charge of \$5.00 or three percent (3%) per month times the unpaid balance, whichever is more, will be added to delinquent amounts.

Bad Check Charge: \*

A bad check charge of \$20 per check will be paid on all checks returned from the bank for insufficient funds.

\* Indicates new rate or text

+ Indicates change

Date of Issue 4/1/03

Date Effective 5/21/03

Issued By: Ann Rudy President 510 Dulin Creek Rd., House Springs MO 63501

Name of Officer Title Address

**Cancelled**

**Filed**

{ Revised }

{ Revised }

**KMB UTILITY CORPORATION**

For

**FRANCHISED AREAS**

Name of Issuing Corporation

Community, Town or City

**STATE OF MISSOURI**

**SCHEDULE OF RATES**

**WARREN WOODS SUBDIVISION (JEFFERSON COUNTY)**

APR 16 1997

MISSOURI

Public Service Commission

Availability:

The following rates are applicable to all customers adjacent to the Company's distribution mains using standard water service:

**CANCELLED**

Rate Schedule:

Minimum Service Charge \$ 31.54

MAY 21 2003

*2nd R S Lee*

Public Service Commission

MISSOURI

Taxes:

Any applicable Federal, State, or Local Taxes shall be in addition to above charges.

Late Charges:

For any bill not paid within the period stated thereon, a late charge in the amount of \$3.00 per month, not to exceed three months or \$9.00 per customer, shall be added to the total amount due. + + +

The rates on this tariff sheet are subject to the terms and conditions of a Stipulation and Agreement approved by the Missouri Public Service Commission in Case Nos. WR-97-100 and SR-97-101. \* \* \*

- \* Indicates new rate or text
- + Indicates change

**FILED**  
97-100  
APR 21 1997  
97-101  
MO. PUBLIC SERVICE COMM

DATE OF ISSUE April 16, 1997

DATE EFFECTIVE April 21, 1997

ISSUED BY Danny E. Dowell President P.O. Box 403, Imperial, MO 63052  
DANNY E. DOWELL name of officer title address

FORM NO. 13 P.S.C.MO. No. 1 { Original } SHEET No. 6E  
 Cancelling P.S.C.MO. No. \_\_\_\_\_ { xxxxxxxx } SHEET No. \_\_\_\_\_  
KMB UTILITY CORPORATION For FRANCHISED AREAS  
 Name of Issuing Corporation Community, Town or City  
Rules Governing Rendering of WATER Service STATE OF MISSOURI

**SCHEDULE OF RATES**  
**WARREN WOODS SUBDIVISION (JEFFERSON COUNTY)**

**RECEIVED**

MAR 07 1994

Availability:

The following rates are applicable to all residential customers adjacent to the Company's distribution mains using standard water service: **Public Service Commission**

Monthly Service Charge \$ 27.50

Taxes:

Any applicable Federal, State or Local taxes shall be in addition to above charges.

**CANCELLED**

APR 21 1997  
 BY lat R.S. # 6E  
 Public Service Commission  
 MISSOURI

**FILED**

MAR 25 1994

94-21

MISSOURI

Public Service Commission

\* Indicates new rate or text  
 + Indicates change

DATE OF ISSUE March 7, 1994 DATE EFFECTIVE March 7, 1994  
 month day year month day year  
 ISSUED BY Danny Edowell President P.O. Box 29197, St. Louis, MO 63126  
 DANNY E. DOWELL name of officer title address



<p style="text-align: center;">P.S.C. MO No. 1 Canceling <u>KMB Utility Corporation</u> Name of Issuing Company</p>	<p style="text-align: center;">1<sup>st</sup> Revised Sheet No. <u>6F</u> Original Sheet No. <u>6F</u> For: <u>Service Areas in Tariff Language</u> Certificated Service Area</p>
<p><b>Rules &amp; Regulations Rendering of Water Service</b></p>	
<p><b>This Page Intentionally Left Blank *</b></p>	
<p>* Indicates New Rate or Text + Indicates Changed Rate or Text</p>	

Issue Date: January 27, 2011  
Month/Day/Year

Effective Date: February 1, 2011  
Month/Day/Year

Issued By: Ann Rudy President  
Name & Title of Issuing Officer

510 Dulin Creek Road House Springs MO 63501  
Company Mailing Address

FILED  
Missouri Public  
Service Commission  
WR-2010-0345; YW-2011-0214

Canceling

KMB Utility Corporation  
Name of Issuing Company

For: Service Areas Specified in Tariff Language  
Certificated Service Area

**Rules Governing  
Rendering of Water Service**

**Meter Replacement/Installation Surcharge \***

A monthly surcharge of \$1.50 will be added to the bills of any customer that has a meter replaced or that has a meter installed where one did not previously exist, pursuant to the provisions of the *Unanimous Supplemental Agreement Regarding Disposition of Small Water Company Rate Increase Request* ("Supplemental Agreement") filed in Commission Case No. WR-2006-0286. Specifically, this surcharge is applicable to all meter replacements or installations made in the Warren Woods, Hillshine and Crestview Acres service areas and ten specific meters located in the Cedar Hill service area, where such replacements and installations are made in accordance with the schedules set out in the Supplemental Agreement. This surcharge will be in effect for customers in the affected service areas that have an existing meter replaced or that receive a new meter installation from the month of the meter replacement or installation for a period of seven years from the effective date of this tariff sheet or until such time as the Company's rates change a result of a rate case, whichever occurs first. \*

The total proceeds from this surcharge will be accounted for separately from other Company funds and the portion of the proceeds that is equivalent to \$1.00/month/customer will be used to offset the Company's investment in the subject meter replacements and installations for ratemaking purposes. \*

All meter replacements and installations will be verified by the Commission Staff in accordance with the provisions of the Supplement Agreement referenced herein. To the extent that the replacement/installation schedule set out in the Supplemental Agreement for each affected service area is not met in its entirety, the provisions of this tariff sheet will cease immediately for all customers located in the service area where the schedule has not been met. \*

\* Indicates New Rate or Text

+ Indicates Changed Rate or Text

Issue Date: January 4, 2006  
Month/Day/Year

Effective Date: April 21, 2006  
February 21, 2006  
Month/Day/Year

Issued By: Ann Rudy – President  
Name & Title of Issuing Officer

5108 Dulin Creek Road House Springs MO 63501  
Company Mailing Address

P.S.C. MO No. 1  
Canceling P.S.C. MO No. 1

5<sup>th</sup> Revised Sheet No. 7  
4<sup>th</sup> Revised Sheet No. 7

KMB Utility Corporation  
Name of Issuing Company

For: Franchised Areas  
Certificated Service Area

### SCHEDULE OS SERVICE CHARGES

These charges are applicable to the Company's services provide for in the corresponding rules:

Service Fee:

Service fee shall be charged to any customer for which service was requested or discontinued when there is a Company owned meter setting or lockable valve located outside the customers dwelling.

Turn-On Charge after service discontinuance by Company for violation of the Company's Rules and Regulations (see Rule 7). \$50.00

Turn-Off or Turn-On Charges applicable to customers requesting temporary disconnection of services (see Rule 8). \$25.00

Discontinuance/Reconnection Fee:

Discontinuance/Reconnection fee with meter installed \$900.00 +

(Applicable for metered Customer what does not have Company owned meter)

Discontinuance/Reconnection fee with meter idler installed \$865.00 +

Discontinuance/Reconnection fee shall be charged to any existing customer for which service was discontinued for non-payment of water bill or other Rules violation, and there is no Company owned meter, meter setting or lockable valve located outside the customers dwelling. The fee may be collected by the Company a single time for each service. To avoid being charged the Discontinuance/Reconnection Fee, payment in full for delinquent water service must be made, or remediation of the specified rule violation must be made and demonstrated prior to Company's work crew arriving at the customers service location to begin discontinuance work. If payment is rendered or rule violation remediation is shown at the time the Company's work crew arrives to begin discontinuation work, the Company will complete the meter setting installation and the customer must pay the delinquent bill in addition to the Discontinuance/Reconnection fee.

New Service Connection:

Charge for new service connection with meter installed (Metered Customer):

Actual cost not to exceed \$900.00

Charge for new service connection with meter idler installed (Flat Rate Customer):

Actual cost not to exceed \$865.00

Includes materials: Corporation stop, saddle, pipe couplings, up to 50' of 3/4" service pipe, 5/8" x 3/4" meter yoke, meter or meter idler, meter box and lid.

Actual cost of extra pipe required over 50 feet, or cost due to larger pipe size, parts, or meter as may be required to provide service shall be an additional charge. Any rock excavation or road crossing shall be billed to the customer at Company's cost, including supervision and overhead.

\* Indicates New Rate or Text

+ Indicates Changed Rate or Text

Issue Date: January 27, 2011  
Month/Day/Year

Effective Date: February 1, 2011  
Month/Day/Year

Issued By: Ann Rudy President  
Name & Title of Issuing Officer

510 Dulin Creek Road House Springs MO 63501  
Company Mailing Address

FILED  
Missouri Public  
Service Commission  
WR-2010-0345; YW-2011-0214

P.S.C. MO No. 1

4th Revised Sheet No. 7

Canceling P.S.C. MO No. 1

3rd Revised Sheet No. 7

KMB Utility Corporation  
Name of Issuing Company

For: Franchised Area's  
Certificated Service Area

**SCHEDULE OF SERVICE CHARGES**

These charges are applicable to the Company's services provide for in the corresponding rules:

Service Fee:

Service fee shall be charged to any customer for which service was requested or discontinued when there is a Company owned meter setting or lockable valve located outside the customers dwelling.

Turn-On Charge after service disconnection by Company for violation of the Company's Rules and Regulations (see Rule 7). \$ 50.00

Turn-Off or Turn-On Charges applicable to customers requesting temporary disconnection of service (see Rule 8). \$ 25.00

Disconnection/Reconnection Fee:

Disconnection/Reconnection fee with meter installed \$900.00 +

(Applicable for metered Customer that does not have Company owned meter)

Disconnection/Reconnection fee with meter idler installed \$865.00 +

Disconnection/Reconnection fee shall be charged to any existing customer for which service was discontinued for non-payment of water bill or other Rules violation and there is no Company owned meter, meter setting or lockable valve located outside the customers dwelling. The fee may be collected by the Company a single time for each service. To avoid being charged the Disconnection/Reconnection Fee, payment in full for delinquent water service must be made prior to Company's work crew arriving at the customers service location to disconnect. If payment is rendered at the start of disconnection, the Company will complete the meter setting and the customer must pay the delinquent bill in addition to the Disconnection/Reconnection fee.

New Service Connection:

Charge for new service connection with meter installed (Metered Customer):

Actual cost not to exceed \$900.00

Charge for new service connection with meter idler installed (Flat Rate Customer):

Actual cost not to exceed \$865.00

Includes materials: Corporation stop, saddle, pipe couplings, up to 50' of 3/4" service pipe, 5/8" x 3/4" meter yoke, meter or meter idler, meter box and lid.

Actual cost of extra pipe required over 50 feet, or cost due to larger pipe size, parts, or meter as may be required to provide service shall be an additional charge. Any rock excavation or road crossings shall be billed to the customer at Company's cost, including supervision and overhead.

\* Indicates New Rate or Text

+ Indicates Changed Rate or Text

April 21, 2006

Issue Date: January 4, 2006  
Month/Day/Year

Effective Date: February 21, 2006  
Month/Day/Year

Issued By: Ann Rudy President  
Name & Title of Issuing Officer

510 Dulin Creek Road House Springs MO 63501  
Company Mailing Address

**KMB UTILITY CORPORATION**  
Name of Issuing Corporation

For **FRANCHISED AREAS**  
Community, Town or City  
**STATE OF MISSOURI**

**RECEIVED**

**SCHEDULE OF SERVICE CHARGES**

**NOV 14 1995**

These charges are applicable to the Company's services provided for **MO. PUBLIC SERVICE COMM.**  
the corresponding rules:

\* **SERVICE FEE:**

\* Service fee shall be charged to any customer for which service was requested or discontinued when there is a Company owned meter setting or lockable valve located outside the customers dwelling.

Turn-On Charge after service disconnection by Company for violation of the Company's Rules and Regulations (see Rule 7). **\$ 50.00**

\* Turn-Off or Turn-On Charges applicable to customers requesting temporary disconnection of service (see Rule 8). **\$ 25.00**

\* **DISCONNECTION/RECONNECTION FEE:**

\* Disconnection/Reconnection fee with meter installed **\$ 475.00**  
(Applicable for metered Customer that does not have Company owned meter)

\* Disconnection/Reconnection fee with meter idler installed **\$ 435.00**

\* Disconnection/Reconnection fee shall be charged to any existing customer for which service was discontinued for non-payment of water bill or other Rules violation and there is no Company owned meter, meter setting or lockable valve located outside the customers dwelling. The fee may be collected by the Company a single time for each service. To avoid being charged the Disconnection/Reconnection Fee, payment in full for delinquent water service must be made prior to Company's work crew arriving at the customers service location to disconnect. If payment is rendered at the start of disconnection, the Company will complete the meter setting and the customer must pay the delinquent bill in addition to the Disconnection/Reconnection fee.

\* **NEW SERVICE CONNECTION:**

\* Charge for new service connection with meter installed (Metered Customer) **\$ 475.00**

\* Charge for new service connection with meter idler installed (Flat Rate Customer) **\$ 435.00**

\* Includes materials: Corporation stop, saddle, pipe couplings, up to 50 feet of 3/4" service pipe, 5/8" x 3/4" meter yoke, meter or meter idler, meter box and lid.

\* Actual cost of extra pipe required over 50 feet, or cost due to larger pipe size, parts, or meter as may be required to provide service shall be an additional charge. Any rock excavation or road crossings shall be billed to the customer at Company's cost, including supervision and overhead.

\* Indicates new rate or text

+ Indicates change

**FILED**

**DEC 15 1995**

DATE OF ISSUE NOVEMBER 15, 1995 DATE EFFECTIVE DECEMBER 15, 1995  
month day year month day year

ISSUED BY Danny E. Dowell President P.O. Box 29197, St. Louis, MO 63126  
DANNY E. DOWELL name of officer title address

**Cancelled**

April 21, 2006

Missouri Public

Service Commission

**MO. PUBLIC SERVICE COMM.**

{ Revised }

{ Revised }

**KMB UTILITY CORPORATION**

For

**FRANCHISED AREAS**

Name of Issuing Corporation

Community, Town or City

**STATE OF MISSOURI**

**SCHEDULE OF SERVICE CHARGES**

These charges are applicable to the Company's services provided for in the corresponding rules:

**RECEIVED**

Reconnect Charge after service disconnection by Company for Violation of the Company's Rules and Regulations (see Rule 7). \$ 50.00

**MAR 31 1995**

Turn-Off and Turn-On Charges applicable to customers requesting temporary disconnection (see Rule 8). \$ 25.00

**MISSOURI  
Public Service Commission**

Service Connection:

Charge for new service connection \$ 325.00

Includes: Corporation stop, up to 50 feet of 3/4" service pipe, 5/8" x 3/4" meter yoke, meter box and lid, meter, custom backhoe work and labor.

Any excess over 50 feet of 3/4" service pipe or service pipe of a larger size shall be billed to the customer at Company's cost. Any rock excavation shall be billed to the customer at Company's cost, including supervision and overhead.

Late Charges: \*

For any bill not paid within the period stated thereon, a late charge in the amount of \$ 3.00 per month shall be added to the total amount due.

**CANCELLED**

**DEC 15 1995**  
BY 3rd R.S. #7  
Public Service Commission  
**MISSOURI**

**FILED**  
**MAY 22 1995**  
**95 - 296**  
**MO. PUBLIC SERVICE COMM**

\* Indicates new rate or text  
+ Indicates change

DATE OF ISSUE April 3, 1995 DATE EFFECTIVE May 22, 1995  
month day year month day year

ISSUED BY Danny E. Dowell President P.O. Box 29197, St. Louis, MO 63126  
name of officer title address

FORM NO. 13

P.S.C.MO. No. 1 1st {xxxxxxxx} SHEET No. 7  
{ Revised }

Cancelling P.S.C.MO. No. 1 { Original } SHEET No. 7  
{xxxxxxxx}

**KMB UTILITY CORPORATION**

For

**FRANCHISED AREAS**

Name of Issuing Corporation

Community, Town or City

**STATE OF MISSOURI**

**SCHEDULE OF SERVICE CHARGES**

**RECEIVED**

FEB 14 1992

These charges are applicable to the Company's services provided for in the corresponding rules: MO. PUBLIC SERVICE COMM.

Reconnect Charge after service disconnection by Company for violation of the Company's Rules and Regulations (see Rule 7). \$ 50.00

Turn-Off and Turn-On Charges applicable to customers requesting temporary disconnection (see Rule 8). \$ 25.00

Service Connection:

Charge for new service connection \$325.00

Includes: Corportation cock, up to 50 feet of 3/4" service pipe, 5/8" x 3/4" meter yoke, meter box and lid, meter, custom backhoe work and labor.

Any excess over 50 feet of 3/4" service pipe or service pipe of a larger size shall be billed to the customer at Company's cost. Any rock excavation shall be billed to the cutomer at Company's cost, including supervision and overhead.

**CANCELLED**

MAY 22 1995  
BY *[Signature]* B.S.# 7  
Public Service Commission  
MISSOURI

**FILED**

APR 14 1992  
92-127  
Public Service Commission

\* Indicates new rate or text  
+ Indicates change

DATE OF ISSUE 1/30/92

DATE EFFECTIVE ~~3/15/92~~

ISSUED BY *Danny E. Dowell* President P.O. Box 29197, St. Louis, MO 63126  
DANNY E. DOWELL name of officer title addressFORM NO. 13

APR 14 1992

month day year

FORM NO. 13 P.S.C.MO. No. 1 { Original } SHEET No. 7  
~~REVISED~~

Cancelling P.S.C.MO. No. \_\_\_\_\_ { Original } SHEET No. \_\_\_\_\_  
~~Revised~~

KMB UTILITY CORPORATION For FRANCHISED AREAS  
Name of Issuing Corporation Community, Town or City  
STATE OF MISSOURI

RECEIVED

SCHEDULE OF SERVICE CHARGES

JAN 15 1991

Discontinuance of Water Service by Company as Described in Rule 7 (Turn Off and Turn On Charges)	\$ 35.00	MISSOURI Public Service Commission
Discontinuance of Water Service at Customer's Request as Described in Rule 8 (Turn Off and Turn on Charges)	\$ 25.00	
Meter installation (TAP FEE) when connection is to serve an existing water service customer	\$ 50.00	
Meter installation (TAP FEE) when connection is to serve a future or new water service customer	\$ 325.00	

CANCELLED

APR 16 1992

BY John S. [Signature]  
Public Service Commission  
MISSOURI

FILED

FEB 15 1991  
91 - 52

Public Service Commission

\*Indicates new rate or text  
+Indicates change

DATE OF ISSUE JANUARY 15, 1991 DATE EFFECTIVE FEBRUARY 15, 1991  
month day year month day year

ISSUED BY Danny E. Dowell PRESIDENT P.O. BOX 29197  
name of officer title ST. LOUIS, MO 63126  
address

DANNY E. DOWELL



KMB UTILITY CORPORATION  
Name of Issuing Corporation

For FRANCHISED AREAS  
Community, Town or City

**RECEIVED**

JAN 15 1991

MISSOURI  
Public Service Commission

Rule 1 DEFINITIONS

- (a) The "COMPANY" is the KMB UTILITY CORPORATION acting through its officers, managers, or other duly authorized employees or agents.
- (b) The "CUSTOMER" is any person, firm, corporation or governmental body which has contracted with the Company for water service or is receiving service from Company, or whose facilities are connected for utilizing such service.
- (c) The word "UNIT" shall be used herein to define the standard user or property served and shall pertain to any building whether residential or commercial owned or leased. Mobile homes or rental units are considered as separate units for each single family or firm occupying same as a residence or place of business.
- (d) A "MAIN" is a pipeline which is owned and maintained by the Company, located on public property or private easements, and used to transport water throughout the Company's service area.
- (e) A "CUSTOMER'S WATER SERVICE LINE" is a pipe with appurtenances installed, owned and maintained by the customer, used to conduct water to the customer's unit from the property line or outdoor meter setting, including the connection to the meter setting. If the property line is in a street, then the said customer's water service line shall be deemed to begin at the edge of the street abutting the customer's property.
- (f) A "SERVICE CONNECTION" is the pipeline connecting the main to the customer's water service line at the property line, or outdoor meter setting including all necessary appurtenances.

\*Indicates new rate or text  
+Indicates change

FEB 15 1991  
91 - 52

Public Service Commission

DATE OF ISSUE JANUARY 15, 1991  
month day year

DATE EFFECTIVE FEBRUARY 15, 1991  
month day year

ISSUED BY Danny E. Dowell  
name of officer

PRESIDENT  
title

P.O. BOX 29197  
ST. LOUIS, MO 63126  
address

DANNY E. DOWELL

KMB UTILITY CORPORATION  
Name of Issuing Corporation

For FRANCHISED AREAS  
Community, Town or City  
STATE OF MISSOURI

JAN 15 1991

MISSOURI  
Public Service Commission

Rule 1 DEFINITIONS (Continued)

This service connection will be installed, owned, and maintained by the Company. If the property line is in a street, the said service connection shall be deemed to end at the edge of the street abutting the customer's property.

- (g) The "DATE OF CONNECTION" shall be the date of the permit for installation and connection issued by the Company. In the event no permit is taken and a connection is made, the date of connection may be the date of commencement of construction of the building upon the property.
- (h) The "METER SETTING" includes the meter box, meter yoke, lid, and appurtenances, all of which shall be owned and maintained by the Company.
- (i) The "METER" is a device used to measure and record the quantity of water that flows through; and is installed in the meter setting.
- (j) "DEVELOPER" means any person, firm, corporation, partnership or other entity that, directly or indirectly, holds title to, or sells or leases, or offers to sell or lease, or advertises for sale or lease, any lots in a subdivision.
- (k) "SUBDIVISION" means any land in this state which is divided or proposed to be divided into two or more lots or other divisions of land, whether contiguous or not, or uniform in size or not, for the purpose of sale or lease, and includes resubdivision thereof.

FILED

FEB 15 1991

91 - 52

Public Service Commission

\*Indicates new rate or text  
+Indicates change

DATE OF ISSUE JANUARY 15, 1991 DATE EFFECTIVE FEBRUARY 15, 1991  
month day year month day year

ISSUED BY Danny E. Dowell PRESIDENT P.O. BOX 29197  
name of officer title ST. LOUIS, MO 63126  
address

DANNY E. DOWELL

KMB UTILITY CORPORATION  
Name of Issuing Corporation

For FRANCHISED AREAS  
Community, Town or City  
STATE OF MISSOURI

JAN 15 1991

MISSOURI  
Public Service Commission

Rule 2 GENERAL

- (a) Every water customer, upon signing an application for any water service rendered by the Company, or upon taking of water service, shall be considered to have expressed consent to be bound by these rates, rules and regulations.
- (b) The Company's rules and regulations governing rendering of service are set forth in these numbered sheets. The rates applicable to appropriate water service or rate determination areas are set forth in rate schedules and constitute a part of these rules and regulations.
- (c) The Company reserves the right, subject to authority of the Public Service Commission of Missouri, to prescribe additional rates, rules or regulations or to alter existing rates, rules or regulations as it may from time to time deem necessary and proper.
- (d) After the effective date of these rules and regulations, all new facilities, construction contracts, and written agreements shall conform to these rules and regulations in accordance with the statutes of the State of Missouri and of the Public Service Commission of Missouri. Pre-existing facilities that do not comply with applicable rules and regulations may remain, provided that their existence does not constitute a service problem or improper use, and reconstruction is not practical.

FILED

FEB 15 1991  
91 - 52

Public Service Commission

\*Indicates new rate or text  
+Indicates change

DATE OF ISSUE JANUARY 15, 1991 DATE EFFECTIVE FEBRUARY 15, 1991  
month day year month day year

ISSUED BY Danny Edowell PRESIDENT P.O. BOX 29197  
name of officer title ST. LOUIS, MO 6312  
address

DANNY E. DOWELL

FORM NO. 13

P.S.C.MO. No. 1

{ Original } SHEET No. 11  
{ Revised }

Cancelling P.S.C.MO. No. \_\_\_\_\_

{ Original } SHEET No. \_\_\_\_\_  
{ Revised }

KMB UTILITY CORPORATION  
Name of Issuing Corporation

For FRANCHISED AREAS  
Community, Town or City  
STATE OF MISSOURI

RECEIVED

JAN 15 1991

Rule 3 COMPANY EMPLOYEES AND CUSTOMER RELATIONS

MISSOURI

- (a) Employees or agents of the Company <sup>Public Service Commission</sup> are expressly forbidden to demand or accept any compensation for any services rendered to its Customers except as covered in the Company's rules and regulations.
- (b) No employee or agent of the Company shall have the right or authority to bind it by any promise, agreement or representation contrary to the intent of these rules and regulations.

FILED

FEB 15 1991  
91-52

Public Service Commission

\*Indicates new rate or text  
+Indicates change

DATE OF ISSUE JANUARY 15, 1991  
month day year

DATE EFFECTIVE FEBRUARY 15, 1991  
month day year

ISSUED BY Danny E. Dowell  
name of officer

PRESIDENT title  
P.O. BOX 29197  
ST. LOUIS, MO 63126 address

DANNY E. DOWELL

KMB UTILITY CORPORATION  
Name of Issuing Corporation

For FRANCHISED AREAS  
Community, Town or City  
STATE OF MISSOURI

RECEIVED

JAN 15 1991

Rule 4 APPLICATIONS FOR SERVICE

MISSOURI

Public Service Commission

- (a) A written application for service, signed by the customer, stating the type of service required and accompanied by any other pertinent information, will be required from each customer before service is provided to any unit. Every customer, upon signing an application for any service rendered by the Company, or upon taking of service, shall be considered to have expressed consent to the Company's rates, rules and regulations.
- (b) If service is requested at a point not already served by a main of adequate capacity, a main of adequate size shall be extended as may be necessary according to the Company's rule for extension of water mains.
- (c) When, in order to provide the service requested, a main extension or other unusual construction or equipment expense is required, the Company shall require a written contract. Said contract may include, but not be limited to the obligations upon the Company and the Applicant, and shall specify a reasonable period of time necessary to provide such service.

FILED

FEB 15 1991

91-52  
Public Service Commission

\*Indicates new rate or text  
+Indicates change

DATE OF ISSUE JANUARY 15, 1991  
month day year

DATE EFFECTIVE FEBRUARY 15, 1991  
month day year

ISSUED BY Danny E. Dowell  
name of officer

PRESIDENT  
title

P.O. BOX 29197  
ST. LOUIS, MO 6312  
address

DANNY E. DOWELL

KMB UTILITY CORPORATION  
Name of Issuing Corporation

For FRANCHISED AREAS  
Community, Town or City  
STATE OF MISSOURI

RECEIVED

JAN 15 1991

Rule 5 INSIDE PIPING AND CUSTOMER WATER SERVICE LINES MISSOURI  
Public Service Commission

- (a) The Company will provide the Customer water service at the outdoor meter, or at the property line. Separate units shall be served through separate service lines.
- (b) The Service Connection from the water main to the Customer's property line, the meter installation and setting shall be constructed, owned and maintained by the Company. Service line construction and maintenance from the property line or meter setting, including the connection to the meter setting, to the building shall be the responsibility of the Customer, and is subject to inspection by the Company. Customers shall be responsible for the cost of repairing any damage to the Company's lines, meters, and meter installations caused by the Customer, his agent, or tenant.
- (c) Existing water service lines may be used in connecting with new buildings only when they are found by examination and testing not to constitute a hazard to the health and safety of any Customer or the Company's facilities.
- (d) The Customer's water service lines shall be brought to the unit at a depth of not less than 36 inches and have a minimum inside diameter of 3/4 of an inch upon entering the building. The service line shall be valved. This valve must be kept in good repair in order to shut off the water supply and drain the inside plumbing, if necessary.

FILED

FEB 15 1991

91 - 52

Public Service Commission

\*Indicates new rate or text  
+Indicates change

DATE OF ISSUE JANUARY 15, 1991 DATE EFFECTIVE FEBRUARY 15, 1991  
month day year month day year

ISSUED BY Danny E. Dowell PRESIDENT P.O. BOX 29197  
name of officer title ST. LOUIS, MO 63126  
address

DANNY E. DOWELL

KMB UTILITY CORPORATION  
Name of Issuing Corporation

For FRANCHISED AREAS  
Community, Town or City  
STATE OF MISSOURI

RECEIVED

JAN 15 1991

Rule 5 INSIDE PIPING AND CUSTOMER WATER SERVICE LINES (continued) MISSOURI Service Commission

- (e) The Customer's water service lines and inside piping shall be of material conforming to recognized standards for potable water service and shall have a pressure rating of at least 160 psi working pressure.
- (f) The Company will not install a service connection to a vacant lot.
- (g) Any change in the location of an existing service connection requested by the Customer shall be made at his expense.
- (h) The Company shall have the right to enter the Customer's premises for purposes of inspection to ensure compliance to these rules and regulations. The Company shall identify themselves and make these inspections only at reasonable hours.
- (i) Neither Customer's water service lines nor the Service Connection may be extended along public streets or roadways or through property of others in connecting with the Company's mains, except where the service connection is in the water main easement in order to be connected to the main. The service connection and service line must be laid in a straight line and at right angles to the main and the face of the structure or as nearly so as possible. Any deviation from this because of physical obstruction will be at the discretion of the Company.

FILED

FEB 15 1991  
91 - 52

Public Service Commission

\*Indicates new rate or text  
+Indicates change

DATE OF ISSUE JANUARY 15, 1991 DATE EFFECTIVE FEBRUARY 15, 1991  
month day year month day year

ISSUED BY Danny Edowell name of officer PRESIDENT title P.O. BOX 29197 address ST. LOUIS, MO 63126  
DANNY E. DOWELL

KMB UTILITY CORPORATION  
Name of Issuing Corporation

For FRANCHISED AREAS  
Community, Town or City  
STATE OF MISSOURI

JAN 15 1991

MISSOURI  
Public Service Commission

Rule 5 INSIDE PIPING AND CUSTOMER WATER SERVICE LINES (continued)

(j) Any customer having a plumbing arrangement, or a water-using device that could allow backsiphonage of any chemical, petroleum, process water, water from a questionable supply, or other substance that could create a health hazard or damage to the water system, shall be required to install and maintain a backflow prevention device. This rule may also apply to customers on whose premises it is impossible or impractical for the company to perform a cross connection survey. The device, installation, location and maintenance program shall be approved by the company.

**FILED**

FEB 15 1991

91 - 52

Public Service Commission

\*Indicates new rate or text  
+Indicates change

DATE OF ISSUE JANUARY 15, 1991 DATE EFFECTIVE FEBRUARY 15, 1991  
month day year month day year

ISSUED BY Danny Edowell  
name of officer

PRESIDENT  
title

P.O. BOX 29197  
ST. LOUIS, MO 63126  
address

DANNY E. DOWELL



KMB UTILITY CORPORATION  
Name of Issuing Corporation

For FRANCHISED AREAS  
Community, Town or City  
STATE OF MISSOURI

RECEIVED

JAN 15 1991

Rule 6 IMPROPER OR EXCESSIVE USE

MISSOURI

Public Service Commission

- (a) No Customer shall be wasteful of the water supplied to his premises by his willful action or inaction. It shall be the responsibility and duty of each Customer to maintain all piping and fixtures at his unit in a good and efficient state of repair at all times.
- (b) No Customer shall make or cause to be made a cross connection between the potable water supply and any source of chemical or bacterial contamination or any other water supply. The Company shall deny or discontinue service where Customer's Water Service Line or inside piping may, in the opinion of the Company, cause a cross-connection with non-potable water or otherwise jeopardize the health and safety of other Customers or the Company's facilities.
- (c) No Customer shall make or cause to be made a connection to a device that will result in excessive water demand or excessive shock, such as water-hammer, to the Company's mains.
- (d) No Customer shall tamper with, remove, or willfully damage a water meter or attempt to operate the shutoff cock on the meter yoke, or allow any such action.
- (e) No Customer shall attempt to take unmetered water from the Company mains either by an unauthorized tap or direct connection to service connection nor by connection to a fire hydrant.

FILED

FEB 15 1991  
91-52

Public Service Commission

\*Indicates new rate or text  
+Indicates change

DATE OF ISSUE JANUARY 15, 1991 DATE EFFECTIVE FEBRUARY 15, 1991  
month day year month day year

ISSUED BY Danny Edowell PRESIDENT title  
name of officer  
DANNY E. DOWELL  
P.O. BOX 29197 address  
ST. LOUIS, MO 63126

FORM NO. 13

P.S.C.MO. No. 1

{ Original } SHEET No. 17  
{ Revised }

Cancelling P.S.C.MO. No. \_\_\_\_\_

{ Original } SHEET No. \_\_\_\_\_  
{ Revised }

KMB UTILITY CORPORATION  
Name of Issuing Corporation

For FRANCHISED AREAS  
Community, Town or City  
STATE OF MISSOURI

RECEIVED

JAN 15 1991

MISSOURI

Rule 6 IMPROPER OR EXCESSIVE USE (continued) Missouri Public Service Commission

(f) Customers will not be permitted to supply water in any way to premises other than the service address, nor to permit others to use their hose or attachments, nor leave them exposed to use by others without permission from the water company.

FILED

FEB 15 1991

91 - 52

Public Service Commission

\*Indicates new rate or text  
+Indicates change

DATE OF ISSUE JANUARY 15, 1991  
month day year

DATE EFFECTIVE FEBRUARY 15, 1991  
month day year

ISSUED BY Danny Edowell  
name of officer  
DANNY E. DOWELL

PRESIDENT  
title

P.O. BOX 29197,  
ST. LOUIS, MO 63126  
address

KMB UTILITY CORPORATION  
Name of Issuing Corporation

For FRANCHISED AREAS  
Community, Town or City  
STATE OF MISSOURI

RECEIVED

JAN 15 1991

Rule 7 DISCONTINUANCE OF WATER SERVICE BY COMPANY

MISSOURI  
Public Service Commission

(a) The Company may discontinue service for any of the following reasons:

1. Nonpayment of a delinquent account not in dispute.
2. Failure to post a security deposit or guarantee acceptable to the utility.
3. Unauthorized interference, diversion or use of the utility service situated or delivered on or about the customer's premises.
4. Failure to comply with the terms and conditions of a settlement agreement.
5. Refusal to grant access at reasonable times to equipment installed upon the premises of the customer for the purpose of inspection, meter reading, maintenance or replacement.
6. Violation of any of these rules and regulations on file with and approved by the Commission, or for any condition which adversely affects the safety of the customer or other persons, or the integrity of the utility's delivery system.

(b) The Company may discontinue service after notice by first class mail is sent to the customer at least six (6) days prior to the date of the proposed discontinuance. If written notice is hand delivered to the customer, it shall be done at least forty-eight (48) hours prior to discontinuance. Service of notice by mail is complete upon mailing.

FILED

FEB 15 1991  
91 - 52

Public Service Commission

\*Indicates new rate or text  
+Indicates change

DATE OF ISSUE JANUARY 15, 1991 DATE EFFECTIVE FEBRUARY 15, 1991  
month day year month day year

ISSUED BY Danny E. Dowell PRESIDENT  
name of officer title  
DANNY E. DOWELL  
P.O. BOX 29197  
ST. LOUIS, MO 63126  
address

KMB UTILITY CORPORATION  
Name of Issuing Corporation

For FRANCHISED AREAS  
Community, Town or City  
STATE OF MISSOURI

RECEIVED

JAN 15 1991

Rule 7 DISCONTINUANCE OF WATER SERVICE BY COMPANY (continued)

MISSOURI  
Public Service Commission

- (c) The Company shall make reasonable effort to communicate with the customer regarding the reason(s) for discontinuance of service, and the resolution. If discontinuance of service would affect an occupant who is not the company's customer, or is not responsible for payment of the bill, then the Company shall make reasonable effort to inform such occupant(s) of the matter.
- (d) The Company shall postpone the discontinuance if personnel will not be available to restore service the same day, or if personnel will not be available to restore service the following day. The Company also shall postpone discontinuance if a medical emergency exists on the premises, however the postponement may be limited to 21 days, and the Company may require proof of a medical emergency.
- (e) Discontinuance of service will be made during reasonable hours. Company personnel shall identify themselves and announce the intentions to disconnect service, or leave a conspicuous notice of the disconnect.
- (f) The provisions of paragraphs (c) and (e) above may be waived if safety of Company personnel while at the premises is a consideration.
- (g) Discontinuance of service to a unit for any reason shall not prevent the Company from pursuing any lawful remedy by action at law or otherwise for the collection of monies due from the customer.
- (h) In case the Company discontinues its service for any violation of these Rules and Regulations, then any monies due the Company shall become immediately due and payable.

FILED

FEB 15 1991

91 - 52

Public Service Commission

\*Indicates new rate or text  
+Indicates change

DATE OF ISSUE JANUARY 15, 1991  
month day year

DATE EFFECTIVE FEBRUARY 15, 1991  
month day year

ISSUED BY DANNY E. DOWELL  
name of officer

PRESIDENT  
title

P.O. BOX 29197  
ST. LOUIS, MO 63126  
address

KMB UTILITY CORPORATION  
Name of Issuing Corporation

For FRANCHISED AREAS  
Community, Town or City  
STATE OF MISSOURI

RECEIVED

JAN 15 1991

MISSOURI

Rule 7 DISCONTINUANCE OF WATER SERVICE BY COMPANY (continued) **Public Service Commission**

- (i) The Company has the right to refuse or to discontinue service to any unit to protect itself against fraud or abuse.
- (j) The Company shall deal with customers and handle customer accounts in accordance with the Public Service Commission's Utility Billing Practices, 4CSR 240-13.

FILED

FEB 15 1991  
91 - 52

Public Service Commission

\*Indicates new rate or text  
+Indicates change

DATE OF ISSUE JANUARY 15, 1991 DATE EFFECTIVE FEBRUARY 15, 1991  
month day year month day year

ISSUED BY Danny Edowell PRESIDENT P.O. BOX 29197  
name of officer title ST. LOUIS, MO 63126  
address

DANNY E. DOWELL

KMB UTILITY CORPORATION  
Name of Issuing Corporation

For FRANCHISED AREAS  
Community, Town or City  
STATE OF MISSOURI

RECEIVED

JAN 15 1991

MISSOURI

Rule 8 DISCONTINUANCE OF WATER SERVICE AT CUSTOMER REQUEST **Public Service Commission**

- (a) Service will be discontinued at the Customer's request, by giving not less than twenty-four (24) hours notice to the Company during its regular office hours. The Company shall, on the requested day, read the Customer's meter and charges for water service rendered up to and including the time of discontinuance shall be computed and will become due and payable immediately.
- (b) A customer may request temporary discontinuance of service for any length of time for his own convenience; however, the customer shall still be charged for service at the appropriate rate during the time the service is turned off. Turn off and turn on charges are specified in the schedule of service charges.

FILED

FEB 15 1991

91 - 52

Public Service Commission

\*Indicates new rate or text  
+Indicates change

DATE OF ISSUE JANUARY 15, 1991  
month day year

DATE EFFECTIVE FEBRUARY 15, 1991  
month day year

ISSUED BY Danny E. Dowell  
name of officer  
DANNY E. DOWELL

PRESIDENT  
title

P.O. BOX 29197  
ST. LOUIS, MO 63126  
address

KMB UTILITY CORPORATION For FRANCHISED AREAS  
Name of Issuing Corporation Community, Town or City  
STATE OF MISSOURI

<b>RECEIVED</b>	
JAN 15 1991	
MISSOURI Public Service Commission	
<p>Rule 9 <u>INTERRUPTIONS IN SERVICE</u></p> <p>(a) The Company reserves the right to discontinue water in its mains at any time, without notice, for making emergency repairs to the water system.</p> <p>(b) Whenever service is interrupted for repairs, all customers affected by such interruptions will be notified in advance whenever it is possible to do so. Every effort will be made to minimize interruption of service.</p> <p>(c) No refunds of charges for water service will be made for interruptions of service unless due to willful misconduct of the Company.</p> <p>(d) In order to avoid service problems when extraordinary conditions exist, the Company reserves the right, at all times, to determine the limit of and regulate in a reasonable and non-discriminatory manner, and where practical, the maximum amounts of water drawn from the Company mains.</p>	
<b>FILED</b>	
FEB 15 1991 91 - 52	
Public Service Commission	
<p>*Indicates new rate or text +Indicates change</p>	

DATE OF ISSUE JANUARY 15, 1991 DATE EFFECTIVE FEBRUARY 15, 1991  
month day year month day year

ISSUED BY Danny E. Dowell PRESIDENT P.O. BOX 29197  
name of officer title ST. LOUIS, MO 63126  
address

KMB UTILITY CORPORATION  
Name of Issuing Corporation

For FRANCHISED AREAS  
Community, Town or City  
STATE OF MISSOURI

	<b>RECEIVED</b>
<p>Rule 10 <u>BILLS FOR SERVICE</u></p> <p>(a) The charges for water service shall be at the <del>rates</del> specified in the rate schedules on file with the <del>Missouri</del> Missouri Public Service Commission. Service charges for turn-off of service are set forth in the Schedule of Service Charges.</p> <p>(b) A Customer who has made application for water service to a unit shall be responsible for payment for all water service provided to him at said unit until the Customer notified the Company to discontinue service.</p> <p>(c) Each customer is responsible for furnishing the Company with his correct address. Failure to receive bills will not be considered an excuse for non-payment nor reason to permit an extension of the date when the account would be considered delinquent. Bills and notices relating to the Company or its business will be mailed or delivered to the mailing address entered in the Customer's application unless the Company is notified in writing by the Customer of a change of address.</p> <p>(d) Payments shall be made at the office of the Company or at such other places conveniently located as may be designated by the Company or by ordinary mail. However, payment must be received by the close of business on the date due.</p> <p>(e) The Company will not be bound by bills rendered under mistake of fact as to the quantity of service rendered or as a result of clerical error.</p>	<p>JAN 15 1991</p> <p>MISSOURI Public Service Commission</p>
<p>*Indicates new rate or text +Indicates change</p>	<p><b>FILED</b></p> <p>FEB 15 1991 91 - 52 Public Service Commission</p>

DATE OF ISSUE JANUARY 15, 1991 DATE EFFECTIVE FEBRUARY 15, 1991  
month day year month day year

ISSUED BY Danny E. Bowell PRESIDENT P.O. BOX 29197  
name of officer title ST. LOUIS, MO 63126  
address  
DANNY E. BOWELL



KMB UTILITY CORPORATION For FRANCHISED AREAS  
 Name of Issuing Corporation Community, Town or City  
 STATE OF MISSOURI

RULES AND REGULATIONS GOVERNING RENDERING OF WATER SERVICE	<b>JAN 15 1991</b> <b>MISSOURI</b> <b>Public Service Commission</b>
<p>(f) A separate bill shall be rendered for each Customer with itemization of all water service charges.</p> <p>(g) The Company shall have the right to render bills monthly. Bills shall be due and payable to it no later than twenty-one (21) calendar days from the date of rendition, unless such due date falls on a Sunday, a legal holiday, or other day when the office is closed, in which case the due date shall be extended to the next business day. All bills for service shall state the due date. Bills unpaid after the stated due date will be delinquent and the Company shall have the right to discontinue service in accordance with Rule 7. The Company shall not be required to restore or connect any new service for such delinquent Customers until the unpaid account due the Company under these Rules and Regulations has been paid in full or arrangements satisfactory to the Company have been made to pay said account.</p> <p>(h) When bills are rendered for a period of less than a complete billing period due to the connection or termination of service, the billing shall be the monthly minimum plus an amount based on the water used at the commodity (water usage) rate or one-half (1/2) of the flat rate if applicable.</p> <p>(i) Held for future use.</p>	
<b>FILED</b> <b>FEB 15 1991</b> <b>91-52</b> <b>Public Service Commission</b>	
*Indicates new rate or text +Indicates change	

DATE OF ISSUE JANUARY 15, 1991 DATE EFFECTIVE FEBRUARY 15, 1991  
month day year month day year  
 ISSUED BY Danny E. Dowell PRESIDENT P.O. BOX 29197  
name of officer title address  
DANNY E. DOWELL ST. LOUIS, MO 6312

KMB UTILITY CORPORATION  
Name of Issuing Corporation

For FRANCHISED AREAS  
Community, Town or City  
STATE OF MISSOURI

RECEIVED

JAN 15 1991

Rule 10 BILLS FOR SERVICE (continued)

MISSOURI

Public Service Commission

- (j) The Company may require a security deposit or other guarantee as a condition of new service if the customer: still has an unpaid account with a utility providing the same type of service accrued within the last five years; or has diverted or interfered with the same type of service in an unauthorized manner within the last five (5) years; or is unable to establish a credit rating with the Company. Adequate credit rating for a residential customer shall be established if the Customer: owns or is purchasing a home; or is and has been regularly employed full time for at least one year; or has an adequate and regular source of income; or can provide credit references from a commercial credit source.
- (k) The Company may require a security deposit or other guarantee of payment as a condition of continued service if: the water service of the Customer has been discontinued for non-payment of a delinquent account not in dispute; or the utility service to the unit has been diverted or interfered with in an unauthorized manner; or the Customer has failed to pay undisputed bills before the delinquency date for five (5) billing periods out of twelve (12) consecutive billing periods, or two (2) out of four (4) consecutive quarters.
- (l) The amount of a security deposit shall not exceed utility charges applicable to one (1) billing period plus thirty (30) days, computed on estimated or actual annual usage.
- (m) Interest at the rate of 6% per annum compounded annually shall be payable on all deposits, but shall not accrue after the utility has made reasonable effort to return the deposit. Interest may be credited to the customer's account.

FILED

FEB 15 1991  
91 - 52

Public Service Commission

\*Indicates new rate or text  
+Indicates change

DATE OF ISSUE JANUARY 15, 1991  
month day year

DATE EFFECTIVE FEBRUARY 15, 1991  
month day year

ISSUED BY Danny Edowell  
name of officer

PRESIDENT  
title

P.O. BOX 29197  
ST. LOUIS, MO 63126  
address

DANNY E. DOWELL

KMB UTILITY CORPORATION  
Name of Issuing Corporation

For FRANCHISED AREAS  
Community, Town or City  
STATE OF MISSOURI

RECEIVED

JAN 15 1991

Rule 10 BILLS FOR SERVICE (continued)

MISSOURI  
Public Service Commission

- (n) After a customer has paid proper and undisputed utility bills by the due dates, for a period not to exceed one year, credit shall be established or re-established, and the deposit and any interest due shall be refunded. The utility may withhold full refund of the deposit pending resolution of a disputed matter.
- (o) The utility shall give a receipt for deposits received, but shall also keep accurate records of deposits, including customer name, service address, amounts, interest, attempts to refund and dates of every activity regarding the deposit.
- (p) All billing matters shall be handled in accordance with the Commission's Utility Billing Practices, 4 CSR 240-13.

FILED

FEB 15 1991

91 - 52

Public Service Commission

\*Indicates new rate or text  
+Indicates change

DATE OF ISSUE JANUARY 15, 1991  
month day year

DATE EFFECTIVE FEBRUARY 15, 1991  
month day year

ISSUED BY Danny Edowell  
name of officer  
DANNY E. DOWELL

PRESIDENT  
title

P.O. BOX 29197  
ST. LOUIS, MO 63126  
address

KMB UTILITY CORPORATION  
Name of Issuing Corporation

For FRANCHISED AREAS  
Community, Town or City  
STATE OF MISSOURI

RECEIVED

JAN 15 1991

Rule 11 METERS AND METER INSTALLATIONS

MISSOURI  
Public Service Commission

- (a) All permanent service connections shall be metered. The Company's installed meter shall be the standard for measuring water used to determine the bill.
- (b) All meters and meter installations shall be furnished, installed, maintained and removed by the Company and shall remain its property.
- (c) The Company shall have the right to determine on the basis of the Customer's flow requirements the type and size of meter to be installed and location of same. If flow requirements increase or decrease subsequent to installation and a larger or smaller meter is requested by the Customer, the cost of installing such meter shall be paid by the Customer.
- (d) Service to any one Customer shall be furnished through a single metering installation. Where a building is occupied by more than one tenant, the building shall be served by one meter. The Customer may rearrange piping at his own expense so as to separate the units and meter his tenants as he chooses, then divide the bill accordingly.
- (e) The meters and meter installations furnished by the Company shall remain its property, and the owners of premises wherein they are located shall be held responsible for their safekeeping. For failure to protect same against damage, the Company may refuse to supply water until the Company is paid for such damage. The amount of the charge shall be the cost of the necessary replacement parts and the labor cost necessary to make the repair.

FILED

FEB 15 1991  
91 - 52

Public Service Commission

\*Indicates new rate or text  
+Indicates change

DATE OF ISSUE JANUARY 15, 1991 DATE EFFECTIVE FEBRUARY 15, 1991  
month day year month day year

ISSUED BY Danny E. Dowell PRESIDENT P.O. BOX 29197  
name of officer title ST. LOUIS, MO 63126  
address  
DANNY E. DOWELL

KMB UTILITY CORPORATION  
Name of Issuing Corporation

For FRANCHISED AREAS  
Community, Town or City  
STATE OF MISSOURI

RECEIVED

JAN 15 1991

Rule 11 METERS AND METER INSTALLATIONS (continued)

MISSOURI  
Public Service Commission

- (f) The meter will be installed at or near the Customer's property line; it shall be placed in a meter box vault constructed by the Company in accordance with its specifications. Company shall furnish and install suitable metering equipment for each Customer except where installation in a special setting is necessary, in which case the excess cost of installation shall be paid by the Customer.
- (g) The Customer shall promptly notify the Company of any defect in, or damage to, the Meter Setting.
- (h) Any change in the location of any existing meter or Meter Setting at the request of the Customer shall be made at the expense of the Customer, and with the approval of the Company.
- (i) If an existing basement meter location is determined inadequate or inaccessible by the Company, the Customer must provide for the installation of a meter to be located at or near the Customer's property line. The Customer shall obtain from the Company, or furnish the necessary meter installation appurtenances conforming to the Company's specifications, and said appurtenances and labor shall be paid for by the Customer.
- (j) Approved meter installation locations in dry basements, sufficiently heated to keep the meter from freezing, may remain provided the meter is readily accessible, at the Company's and Customer's convenience as determined by the Company, for servicing and reading and the meter space provided is located where the service line

FILED

FEB 15 1991  
91 - 52

\*Indicates new rate or text  
+Indicates change

Public Service Commission

DATE OF ISSUE JANUARY 15, 1991 DATE EFFECTIVE FEBRUARY 15, 1991  
month day year month day year

ISSUED BY Danny Edowell PRESIDENT  
name of officer title  
DANNY E. DOWELL  
P.O. BOX 29197  
ST. LOUIS, MO 63126  
address

KMB UTILITY CORPORATION  
Name of Issuing Corporation

For FRANCHISED AREAS  
Community, Town or City  
STATE OF MISSOURI

RECEIVED

JAN 15 1991

Rule 11 METERS AND METER INSTALLATIONS (continued)

MISSOURI  
Public Service Commission

enters the building. The Company may, at its discretion, require the Customer to install a remote reading device at an approved location, for the purpose of reading the meter. It is the responsibility of the Customer and/or the owner of the premises to provide a location for the water meter which, in the event of water discharge as a result of leakage from the meter or couplings, will not result in damage. The Water Company's liability for damages to any and all property caused by such leakage shall in no event exceed the price of water service to the affected premises for one average billing period in the preceding year. Where damage is not caused by the negligence of Company personnel at the premises, this limitation will not apply. If a customer refuses to provide an accessible location for a meter as determined by the Company, the Company will notify the Secretary of the Public Service Commission before ultimately refusing service or proceeding to discontinue service.

FILED

FEB 15 1991  
91-52

Public Service Commission

\*Indicates new rate or text  
+Indicates change

DATE OF ISSUE JANUARY 15, 1991 DATE EFFECTIVE FEBRUARY 15, 1991  
month day year month day year

ISSUED BY Danny Edowell PRESIDENT  
name of officer title  
DANNY E. DOWELL  
P.O. BOX 29197  
ST. LOUIS, MO 63126  
address

KMB UTILITY CORPORATION  
Name of Issuing Corporation

For FRANCHISED AREAS  
Community, Town or City  
STATE OF MISSOURI

RECEIVED

JAN 15 1991

Rule 12 METER TESTS AND TEST FEES

MISSOURI  
Public Service Commission

- (a) Any customer may request the Company to make a special test of the accuracy of the meter through which water is supplied to him. This test will be made in accordance with the standard regulations of the Commission.
- (b) The Company reserves the right to remove and test a meter at any time and to substitute another in its place. In case of a dispute involving a question as to the accuracy of the meter, a test will be made by the Company upon the request of the Customer without charge if the meter has not been tested within twelve (12) months preceding the requested test; otherwise, an approved charge will be made if the test indicates meter accuracy within five percent (5%) or less.
- (c) A meter test requested by the Customer may be witnessed by the Customer or his duly authorized representative, except for tests of meters larger than two (2) inch inlet, which will be conducted by the meter manufacturer. A certified copy of the test will be provided to the Customer.
- (d) If a test shall show an average error of more than five percent (5%), billings shall be adjusted as provided in the Rule for bill adjustments based on meter tests.

FILED

FEB 15 1991  
91 - 52

Public Service Commission

\*Indicates new rate or text  
+Indicates change

DATE OF ISSUE JANUARY 15, 1991  
month day year

DATE EFFECTIVE FEBRUARY 15, 1991  
month day year

ISSUED BY Danny Edowell  
name of officer

PRESIDENT  
title

P.O. BOX 29197  
ST. LOUIS, MO 63126  
address

DANNY E. DOWELL

KMB UTILITY CORPORATION  
Name of Issuing Corporation

For FRANCHISED AREAS  
Community, Town or City  
STATE OF MISSOURI

RECEIVED

JAN 15 1991

Rule 13 BILL ADJUSTMENTS BASED ON METER TESTS MISSOURI  
Public Service Commission

(a) Whenever any test by the Company of a meter while in service or upon its removal from service shall show such meter to have an average error of more than five percent (5%) on the test streams prescribed by the Commission, the Company shall adjust the Customer's bills by the amount of the actual average error of the meter and not the difference between the allowable error and the error as found. The period of adjustment on account of the under-registration or over-registration shall be determined as follows:

- (1) Where the period of error can be shown, the adjustment shall be made for such period.
- (2) Where the period of error cannot be shown, the error found shall be considered to have existed for three (3) months preceding the test.

(b) If the meter is found on any such test to under-register, the Company may render a bill to the Customer concerned for the estimated consumption not covered by bills previously rendered during the period of inaccuracy as above outlined. Such action shall be taken only when the Company was not at fault for allowing the inaccurate meter to remain in service.

(c) If the meter is found faster than allowable, the Company shall refund to the Customer concerned any overcharge caused thereby during the period of inaccuracy as above defined. Said refund may, at the Company's option, be in the form of a credit to the Customer's bill.

FILED

FEB 15 1991

91 - 52

Public Service Commission

\*Indicates new rate or text  
+Indicates change

DATE OF ISSUE JANUARY 15, 1991 DATE EFFECTIVE FEBRUARY 15, 1991  
month day year month day year

ISSUED BY Danny Edowell PRESIDENT ST. LOUIS, MO 63126  
name of officer title address  
DANNY E. DOWELL



KMB UTILITY CORPORATION  
Name of Issuing Corporation

For FRANCHISED AREAS  
Community, Town or City  
STATE OF MISSOURI

RECEIVED

JAN 15 1991

Rule 14 EXTENSION OF WATER MAINS

MISSOURI

Public Service Commission

(A) This rule shall govern the extension of mains by the Company in areas where there are no water mains in the streets and/or roadways. The Company will extend its mains along streets or roads within its certified area to serve new customers under the following terms and conditions:

(1) Upon receipt of a written application for a main extension, the Company will provide the Applicant(s) an itemized estimate of the cost of the proposed extension. Said estimate shall include the cost of all labor and materials required, including valves, fire hydrants, booster stations, storage facilities, reconstruction of existing mains (if necessary), and the direct costs associated with supervision, engineering, permits, and bookkeeping. Applicable income tax cost will be added to this estimate calculated at the maximum rate.

(2) Applicants shall enter into a contract with the Company for the installation of said extension and shall tender to the Company a contribution in-aid-of construction equal to the amount determined in A-1, plus the appropriate customer connection fee. The contract may allow the customer to contract with an independent contractor for the installation and supply of material, except that mains of 12" or greater diameter must be installed by the Company and the reconstruction of existing facilities must be done by the Company.

FILED

FEB 15 1991  
91 - 52

Public Service Commission

\*Indicates new rate or text  
+Indicates change

DATE OF ISSUE JANUARY 15, 1991  
month day year

DATE EFFECTIVE FEBRUARY 15, 1991  
month day year

ISSUED BY Danny Edowell  
name of officer  
DANNY E. DOWELL

PRESIDENT  
title

P.O. BOX 29197  
ST. LOUIS, MO 63126  
address

KMB UTILITY CORPORATION  
Name of Issuing Corporation

For FRANCHISED AREAS  
Community, Town or City  
STATE OF MISSOURI

RECEIVED

JAN 15 1991

MISSOURI

Rule 14 EXTENSION OF WATER MAINS (continued) Public Service Commission

(3) The cost to an Applicant or Applicants connecting to a main extension contributed by other Applicants shall be as follows:

(a) For single-family residential Applicants that are applying for service in a platted subdivision, the Company shall divide the actual cost of the extension (including income taxes) by the number of lots abutting said extension to determine the per lot extension cost. When counting lots, corner lots which abut existing mains shall be excluded.

(b) For single-family residential Applicants that are applying for service in areas that are unplatted in subdivision lots, the Applicants' cost shall be equal to the total cost of the main extension divided by the total length of the main extension in feet times 100 feet.

(c) For industrial, commercial, or multifamily residential Applicants, the cost will be equal to the amount calculated for a single-family residence in Paragraphs 3a or 3b above multiplied times the flow factors of the Applicants' meter. The flow factors of the various sizes of meters are as follows:

FILED

FEB 15 1991  
91-52

Public Service Commission

\*Indicates new rate or text  
+Indicates change

DATE OF ISSUE JANUARY 15, 1991 DATE EFFECTIVE FEBRUARY 15, 1991  
month day year month day year

ISSUED BY Danny E. Dowell PRESIDENT P.O. BOX 29197 ST. LOUIS, MO 63126  
name of officer title address

KMB UTILITY CORPORATION For FRANCHISED AREAS  
 Name of Issuing Corporation Community, Town or City  
STATE OF MISSOURI

<b>RECEIVED</b>															
JAN 15 1991															
Rule 14 <u>EXTENSION OF WATER MAINS</u> (continued)	<b>MISSOURI</b> Public Service Commission														
<table style="margin: auto;"> <thead> <tr> <th style="text-align: center;"><u>Meter Size</u></th> <th style="text-align: center;"><u>Flow Factor</u></th> </tr> </thead> <tbody> <tr> <td style="text-align: center;">5/8</td> <td style="text-align: center;">1</td> </tr> <tr> <td style="text-align: center;">1</td> <td style="text-align: center;">2.5</td> </tr> <tr> <td style="text-align: center;">1 1/2</td> <td style="text-align: center;">5</td> </tr> <tr> <td style="text-align: center;">2</td> <td style="text-align: center;">8</td> </tr> <tr> <td style="text-align: center;">3</td> <td style="text-align: center;">15</td> </tr> <tr> <td style="text-align: center;">4</td> <td style="text-align: center;">25</td> </tr> </tbody> </table>	<u>Meter Size</u>	<u>Flow Factor</u>	5/8	1	1	2.5	1 1/2	5	2	8	3	15	4	25	
<u>Meter Size</u>	<u>Flow Factor</u>														
5/8	1														
1	2.5														
1 1/2	5														
2	8														
3	15														
4	25														
<p>(4) Refunds of contributions shall be made to Applicant(s) as follows:</p> <p>(a) Should the actual cost of the extension be less than the estimated cost, the Company shall refund the difference as soon as the actual cost has been ascertained.</p> <p>(b) After the Company has closed its books for the year in which a contribution was made, it will determine its actual income tax cost associated with each extension and refund any excess income tax costs collected from each Applicant.</p> <p>(c) During the first ten years after the main extension is completed, the Company will refund to the Applicants who paid for the extension moneys collected from Applicants in accordance with paragraph 3 above. The refund shall be paid within a reasonable time after the money is collected.</p>															
<p><b>FILED</b></p> <p>FEB 15 1991 91 - 52</p> <p><b>Public Service Commission</b></p>															
<p>*Indicates new rate or text                  †Indicates change</p>															

DATE OF ISSUE JANUARY 15, 1991 DATE EFFECTIVE FEBRUARY 15, 1991  
month day year month day year

ISSUED BY Danny E. Dowell PRESIDENT P.O. BOX 29197  
name of officer title address  
 DANNY E. DOWELL ST. LOUIS, MO 63126

KMB UTILITY CORPORATION  
Name of Issuing Corporation

For FRANCHISED AREAS  
Community, Town or City  
STATE OF MISSOURI

RECEIVED

JAN 15 1991

Rule 14 EXTENSION OF WATER MAINS (continued).

MISSOURI  
Public Service Commission

(d) The sum of all refunds to any Applicant shall not exceed the total contribution, adjusted for taxes associated with the extension, which the Applicant has paid.

- (5) Extensions made under this rule shall be and remain the property of the Company.
- (6) The Company reserves the right to further extend the main and to connect mains on intersecting streets and easements and customers connected to such further extensions shall not entitle the applicant(s) paying for the original extension to a refund for the connection of such customers.
- (7) Extensions made under this rule shall be of company approved pipe sized to meet water service requirements. If the Company chooses to size the extension larger in order to meet the Company's overall system requirements, the additional cost caused by the large size of pipe shall be borne by the Company.
- (8) No interest will be paid by the Company of payments for the extension made by the Applicant(s).
- (9) If extensions are required on private roads, streets, through private property, or on private property adjacent to public right-of-way, a proper deed of easement must be furnished to the Company without cost to the Company, before the extension will be made.

FILED

FEB 15 1991

91 - 52

Public Service Commission

\*Indicates new rate or text  
+Indicates change

DATE OF ISSUE JANUARY 15, 1991 DATE EFFECTIVE FEBRUARY 15, 1991  
month day year month day year

ISSUED BY Danny E. Dowell PRESIDENT P.O. BOX 29197  
name of officer title ST. LOUIS, MO 63126  
address  
DANNY E. DOWELL