

SBC PSC MO #17
Neosho, Missouri
5th Revised Sheet 2
Replacing 4th Revised Sheet 2

Non-Scannable Map

(Is viewable in the Data Center
200 Madison Street, 1st Floor
Jefferson City MO)

NO SUPPLEMENT TO THIS TARIFF WILL BE ISSUED EXCEPT FOR THE PURPOSE OF CANCELING THIS TARIFF.

P. S. C. Mo. No. 17

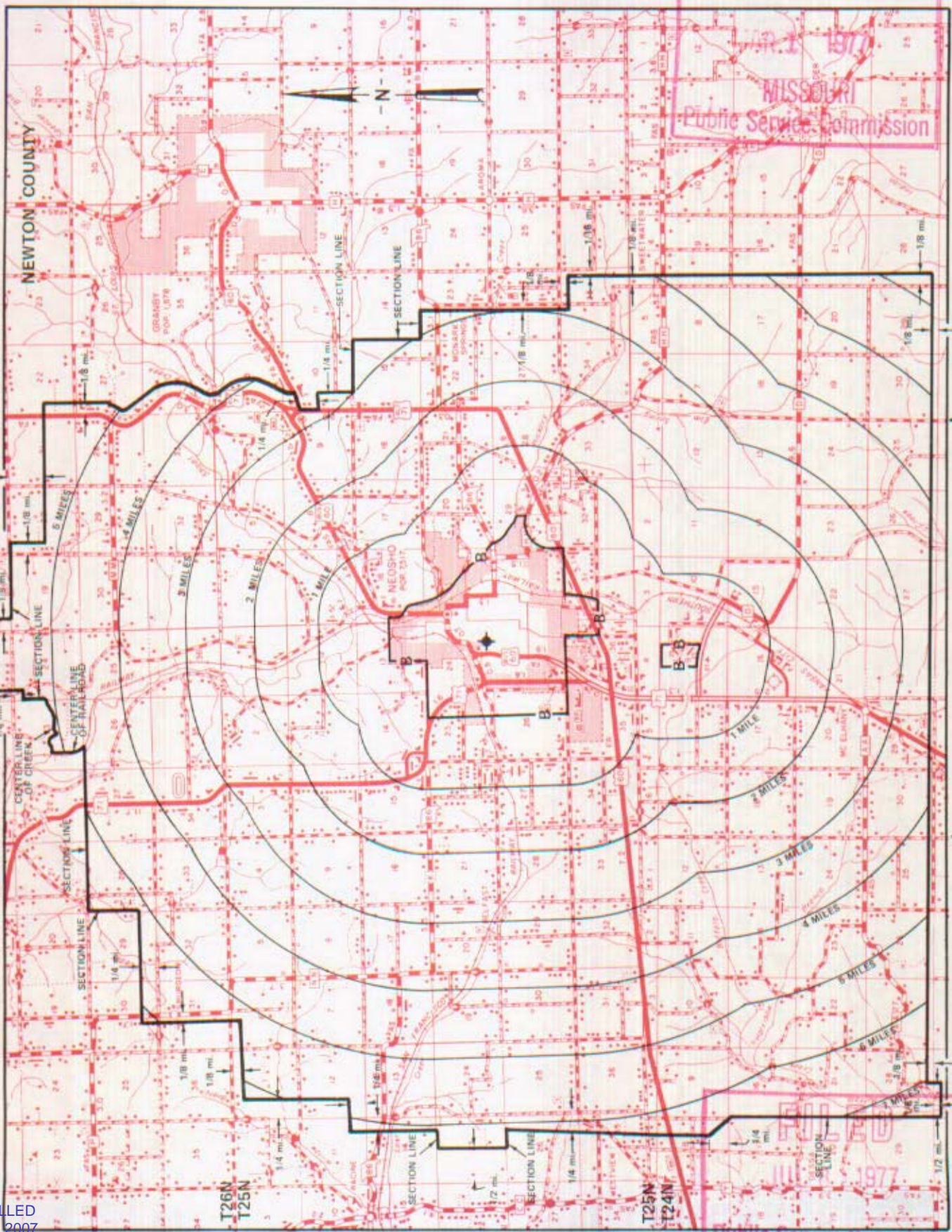
Neosho, Missouri

EXCHANGE AREA MAP

14th REVISED SHEET 3
REPLACING 13th REVISED SHEET 3

RECEIVED

MARCH 2 1977
MISSOURI
Public Service Commission



FILED
JUL 8 1977
Public Service Commission

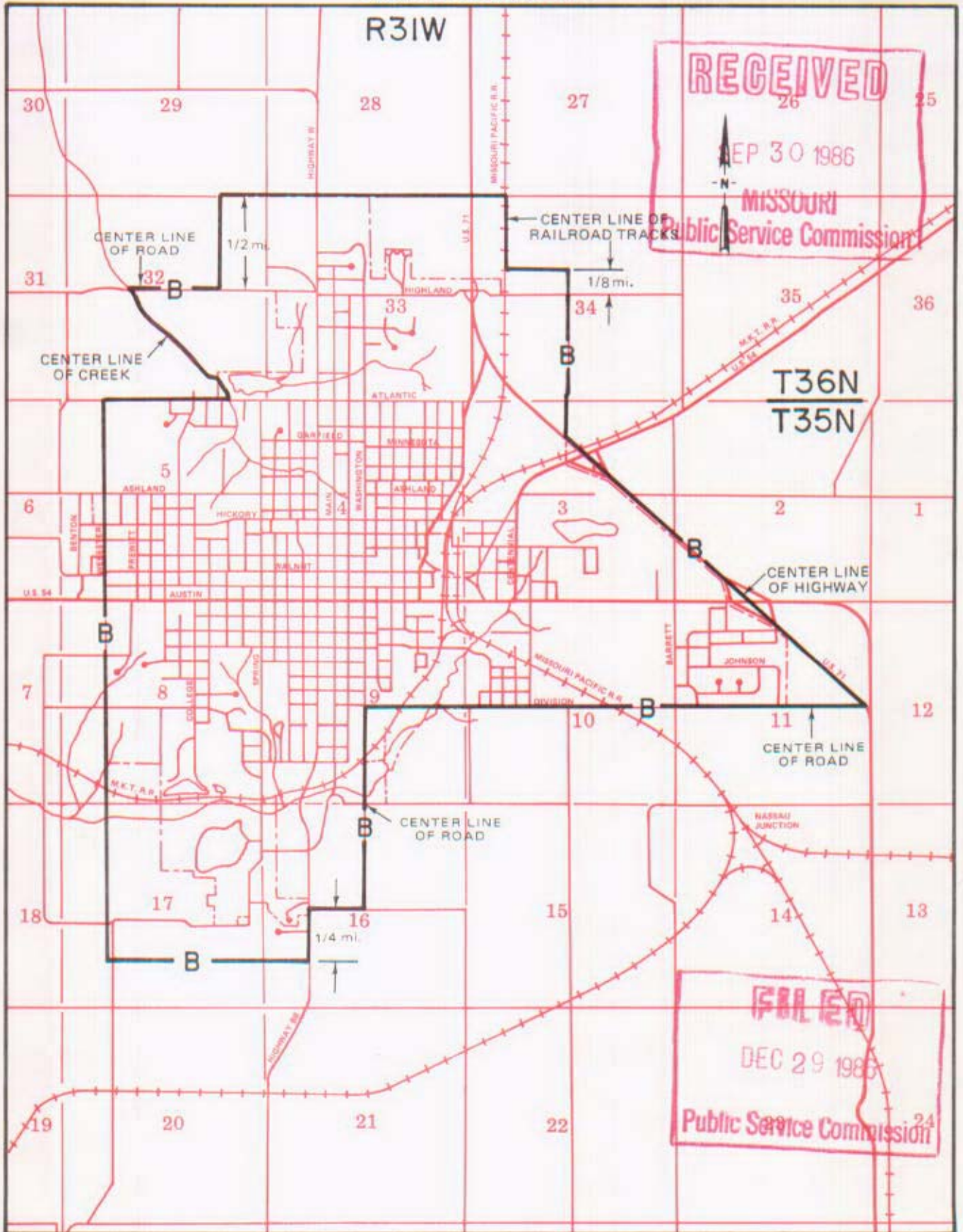
CANCELLED
June 29, 2007
TO-2002-185
Missouri Public
Service Commission

By R. R. SHOCKLEY, Vice President, Missouri
Southwestern Bell Telephone Company
St. Louis, Missouri

Issued: March 1, 1977

Effective: JUL 8 1977

BASE RATE AREA MAP



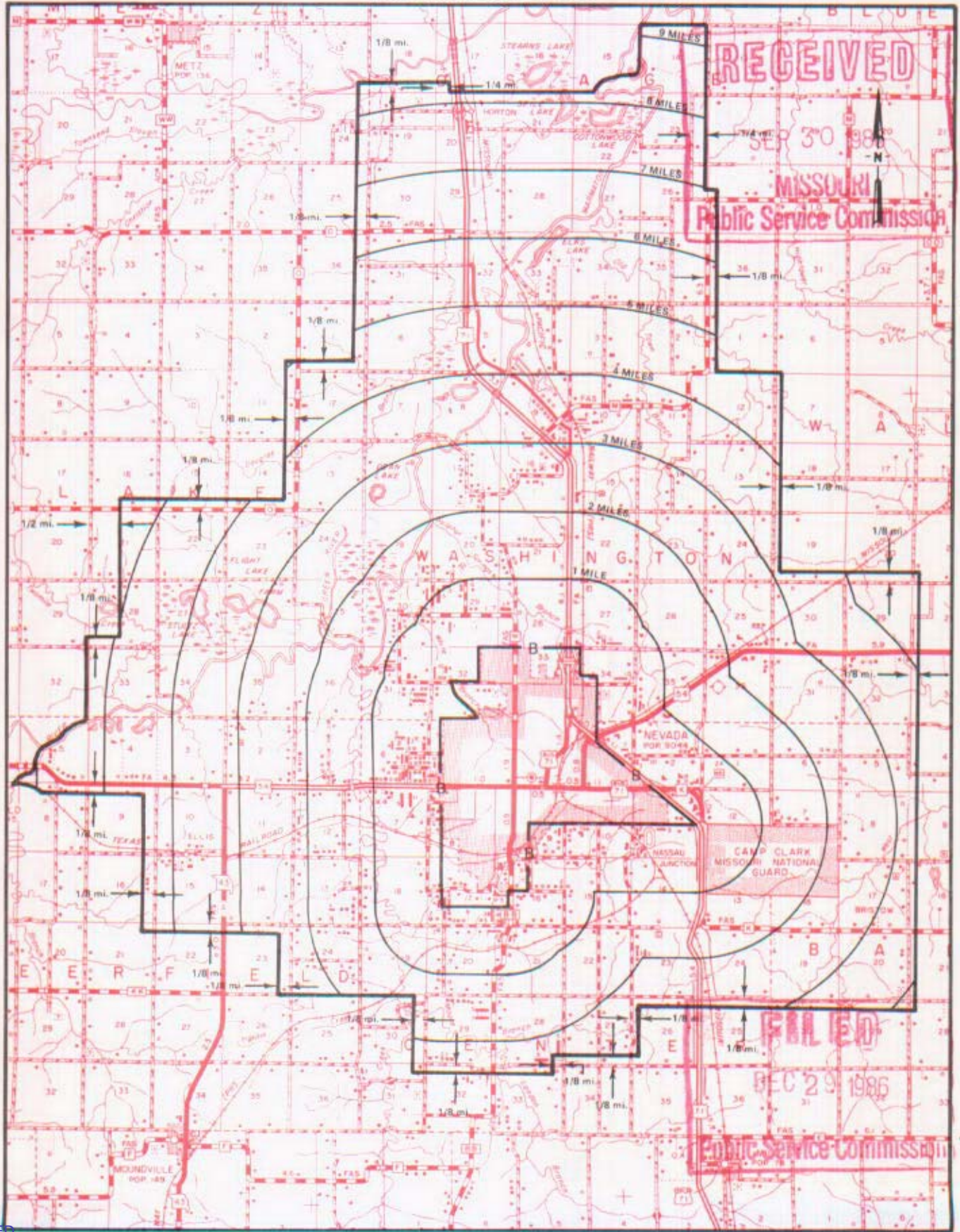
By R.D. BARRON, PRESIDENT—MISSOURI DIVISION
Southwestern Bell Telephone Company
St. Louis, Missouri

Issued: SEPTEMBER 30, 1986

Effective: DECEMBER 29, 1986

CANCELLED
June 29, 2007
TO-2002-186
Missouri Public
Service Commission

EXCHANGE AREA MAP



T37N
T36N

T36N
T35N

T35N
T34N

CANCELLED
June 29, 2007
TO-2002-185
Missouri Public
Service Commission

R32W | R31W | R31W | R30W

By R.D. BARRON, PRESIDENT—MISSOURI DIVISION
Southwestern Bell Telephone Company
St. Louis, Missouri

Issued: SEPTEMBER 30, 1986

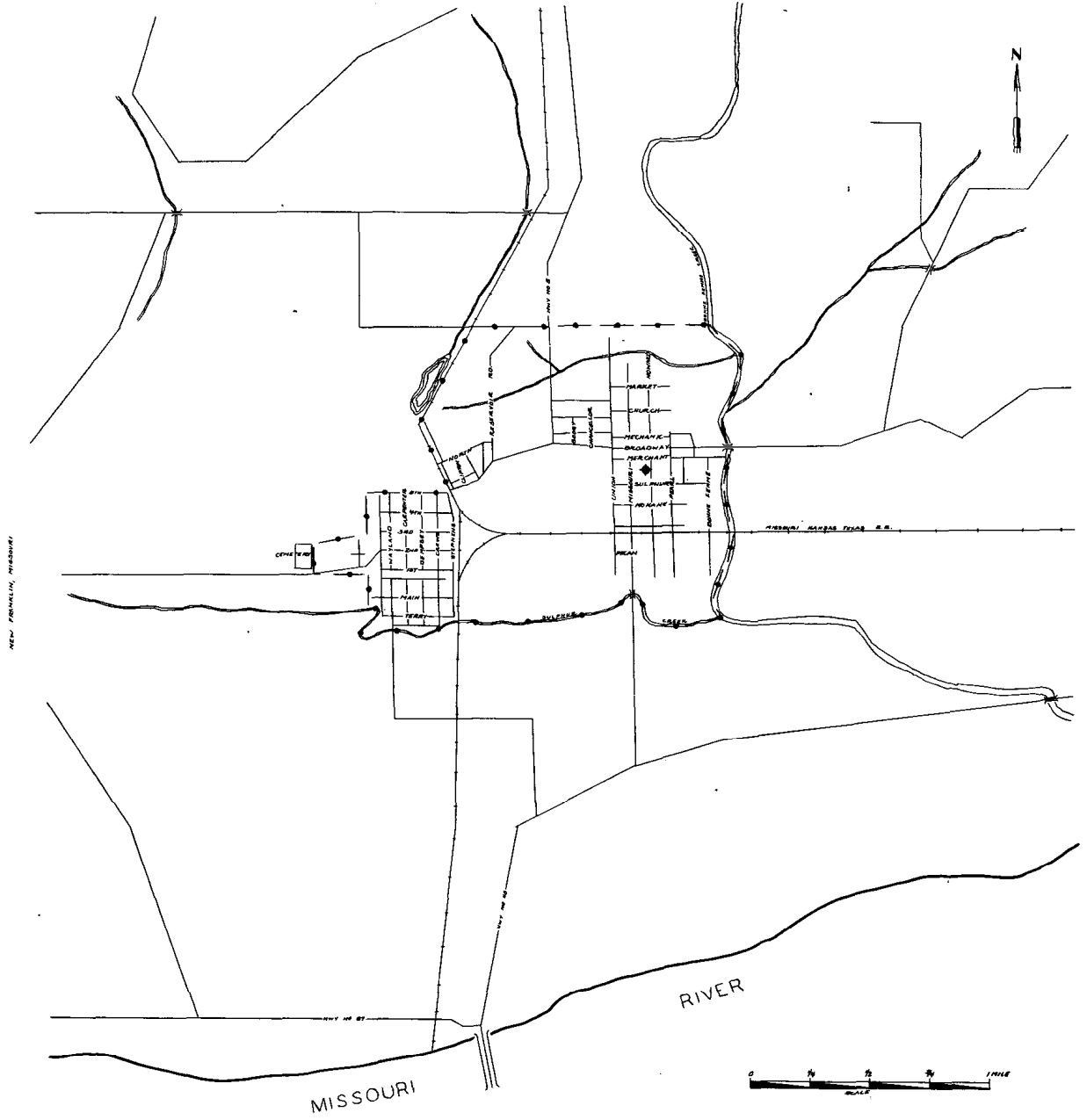
Effective: DECEMBER 29, 1986

NO SUPPLEMENT TO THIS TARIFF WILL BE ISSUED EXCEPT FOR THE PURPOSE OF CANCELING THIS TARIFF.

P. S. C.-Mo. No. 17

New Franklin, Missouri
ORIGINAL SHEET 2
REPLACING ORIGINAL SHEET 1-A

BASE RATE AREA MAP



CODE
 BELL CENTRAL OFFICE: ◆◆◆◆◆
 BASE RATE AREA LIMITS: ◆◆◆◆◆

Issued: June 27, 1950

By H. R. TOWLES, General Manager
Southwestern Bell Telephone Company
St. Louis, Missouri

Effective: July 6, 1950

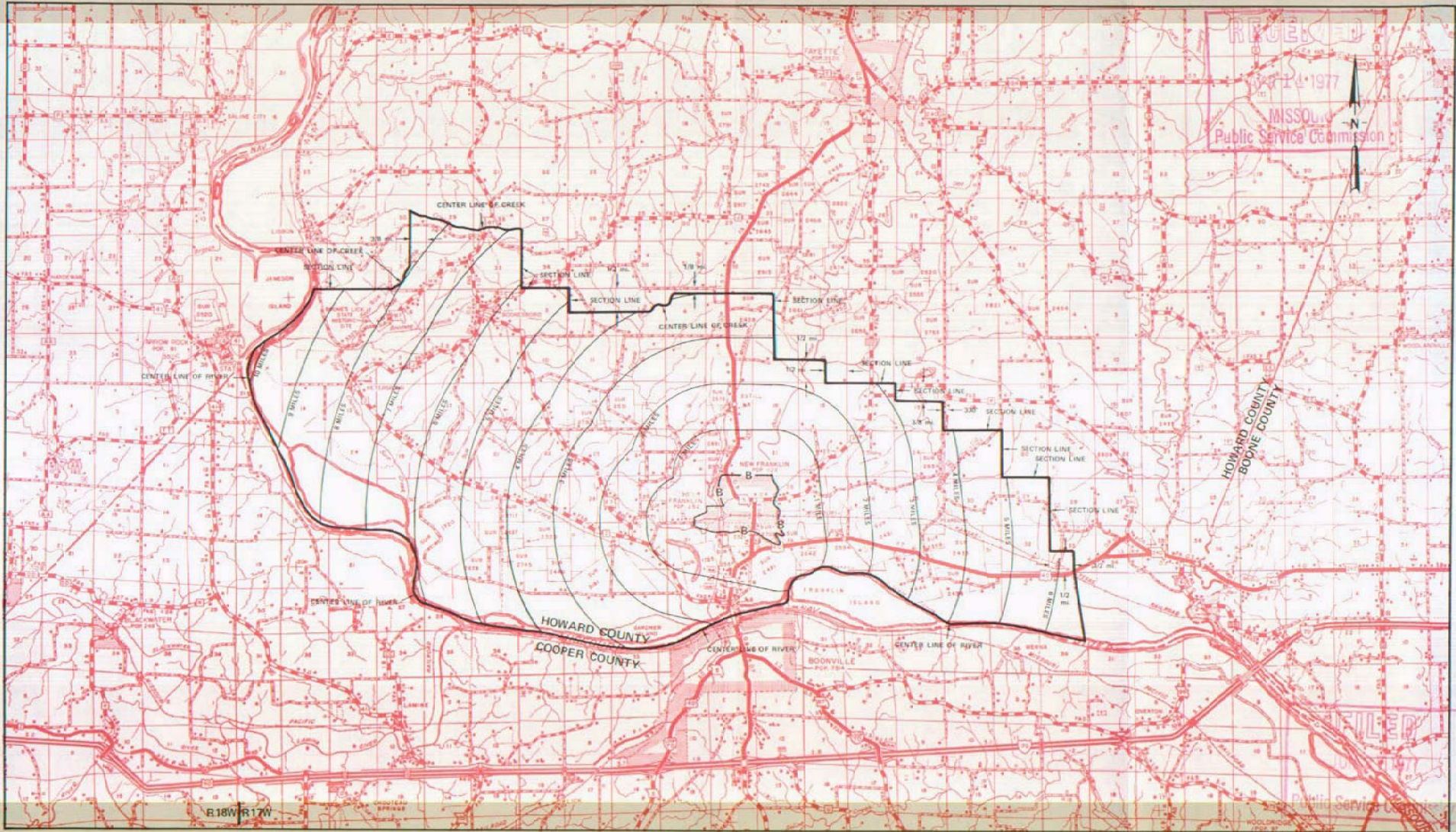
CANCELLED
June 29, 2007
TO-2002-185
Missouri Public
Service Commission

CANCELLED
June 29, 2007
TO-2002-185
Missouri Public
Service Commission

P. S. C. Mo. No. 17
EXCHANGE AREA MAP

New Franklin, Missouri
6th REVISED SHEET 3
REPLACING 5th REVISED SHEET 3

NO SUPPLEMENT TO THIS TARIFF WILL
BE ISSUED EXCEPT FOR THE PURPOSE OF
CANCELING THIS TARIFF.



By R. R. SHOCKLEY, Vice President, Missouri
Southwestern Bell Telephone Company
St. Louis, Missouri

Issued: April 11, 1977

Effective: June 27, 1977

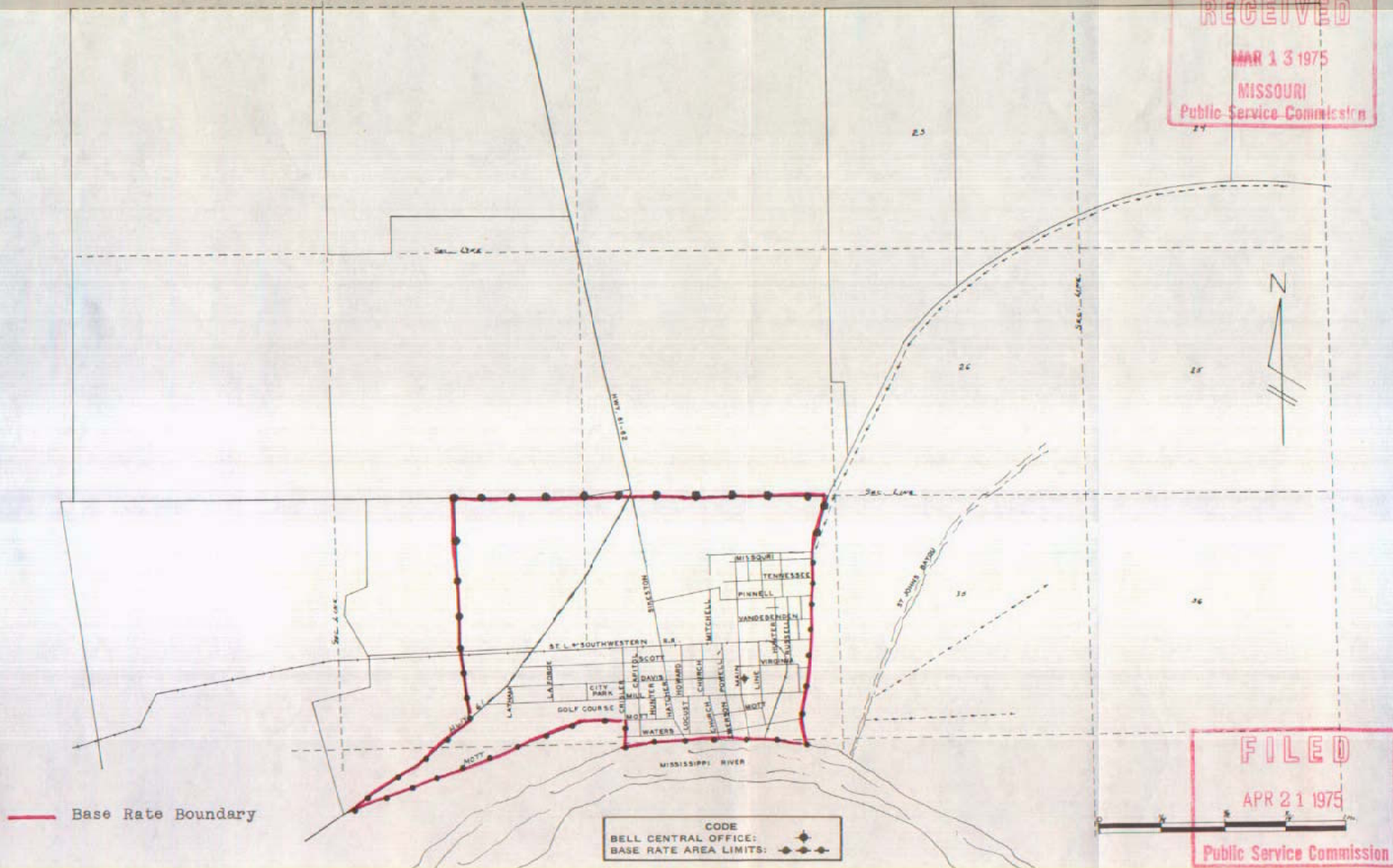
NO SUPPLEMENT TO THIS TARIFF WILL BE ISSUED EXCEPT FOR THE PURPOSE OF CANCELING THIS TARIFF.

CANCELLED
June 29, 2007
TO-2002-185
Missouri Public
Service Commission

P. S. C. Mo. No. 17
BASE RATE AREA MAP

New Madrid, Missouri
1st REVISED SHEET 2
REPLACING REVISED ORIGINAL SHEET 2

RECEIVED
MAR 13 1975
MISSOURI
Public Service Commission



FILED
APR 21 1975
Public Service Commission

Issued: March 21, 1975

By R. R. SHOCKLEY, Vice President, Missouri
Southwestern Bell Telephone Company
St. Louis, Missouri

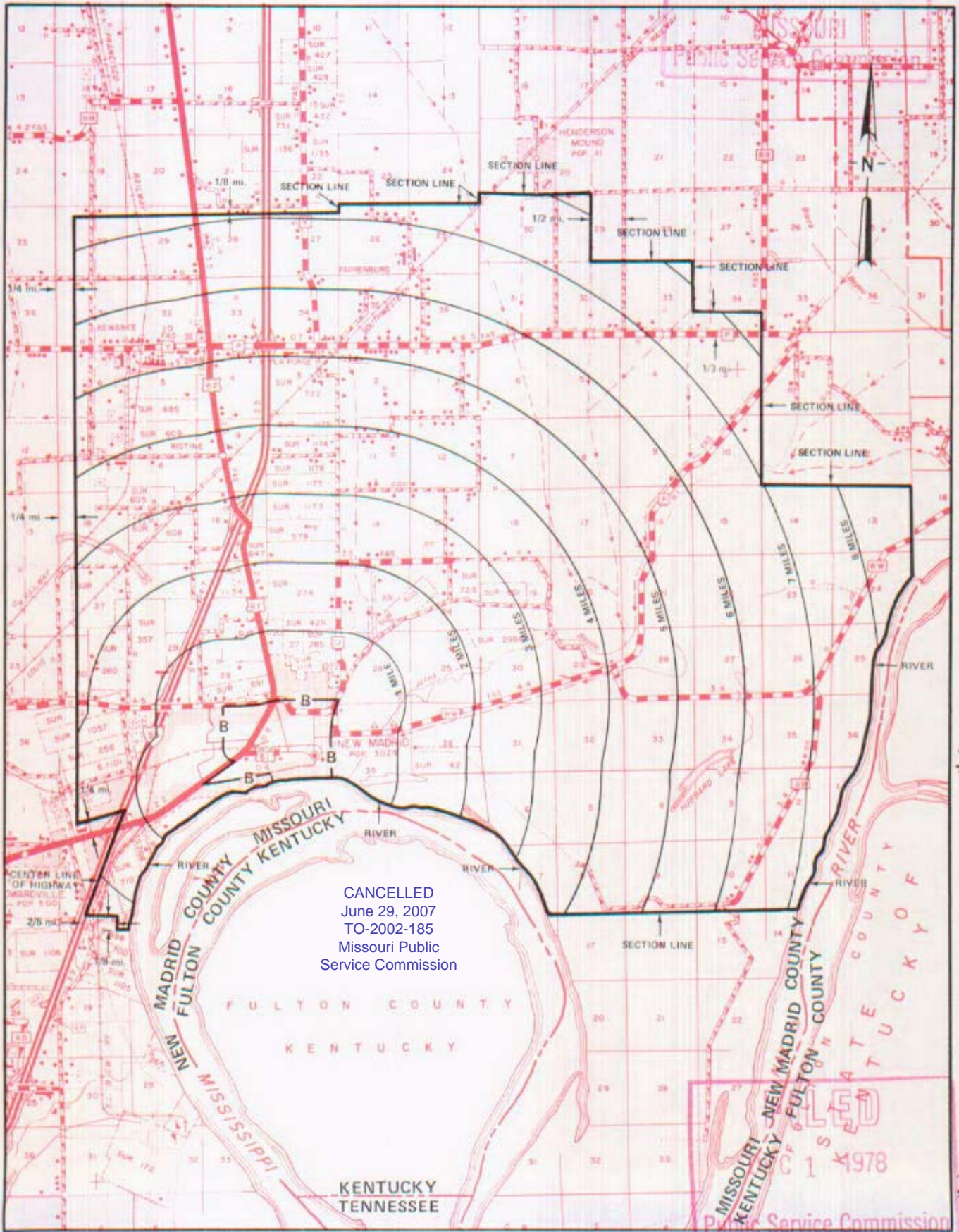
Effective: April 21, 1975

NO SUPPLEMENT TO THIS TARIFF WILL BE ISSUED EXCEPT FOR THE PURPOSE OF CANCELING THIS TARIFF.

P. S. C. Mo. No. 17 EXCHANGE AREA MAP

RECEIVED
New Madrid, Missouri
4th REVISED SHEET 3
REPLACING 3rd REVISED SHEET 3

FEB 14 1977



T24N
T23N

T23N
T22N

T22N
T21N

R13E | R14E

R14E | R15E

R15E | R16E

By R. R. SHOCKLEY, Vice President, Missouri
Southwestern Bell Telephone Company
St. Louis, Missouri

DEC 1 1978

Issued: February 15, 1977

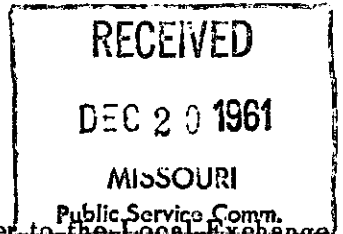
Effective: April 15, 1977

RECEIVED
MISSOURI PUBLIC SERVICE COMMISSION
C 1 1978

No supplement to this tariff will be issued except for the purpose of canceling this tariff.

P.S.C. Mo. No. 17

NIXA, MISSOURI
2ND REVISED SHEET 1
REPLACING 1ST REVISED SHEET 1



For local and general exchange rates applicable to Nixa, please refer to the Local Exchange Tariff Sheet 1, Sheet 1.1, Sheet 1.2, Sheet 1-D and the General Tariffs.

CANCELLED
June 29, 2007
TO-2002-185
Missouri Public
Service Commission

FILED

JAN 19 1962

PUBLIC SERVICE COMMISSION

Issued: December 19, 1961

Effective: January 19, 1962

By F. B. HUNT, Vice President and General Manager
Southwestern Bell Telephone Company
St. Louis, Missouri

No supplement to this
tariff will be issued
except for the purpose
of canceling this tariff

NIXA, MISSOURI
5th Revised Sheet 2
Replacing 4th Revised Sheet 2

BASE RATE AREA MAP

THIS AREA IS INCLUDED IN THE SPRINGFIELD METROPOLITAN EXCHANGE.

RECEIVED

MAY 25 1993

MO. PUBLIC SERVICE COMM

CANCELLED
June 29, 2007
TO-2002-185
Missouri Public
Service Commission

FILED

JUL 07 1993

92-306

MO. PUBLIC SERVICE COMM

Issued: MAY 25 1993

Effective: JUL 07 1993

By A. D. ROBERTSON, Assistant Vice President-External Affairs
Southwestern Bell Telephone Company
St. Louis, Missouri

No supplement to this
tariff will be issued
except for the purpose
of canceling this tariff

NIXA, MISSOURI
11th Revised Sheet 3
Replacing 10th Revised Sheet 3

EXCHANGE AREA MAP

THIS AREA IS INCLUDED IN THE SPRINGFIELD METROPOLITAN EXCHANGE.

RECEIVED

MAY 25 1993

MO. PUBLIC SERVICE COMM.

CANCELLED
June 29, 2007
TO-2002-185
Missouri Public
Service Commission

FILED

JUL 07 1993
92-306

MO. PUBLIC SERVICE COMM.

Issued: **MAY 25 1993**

Effective: **JUL 07 1993**

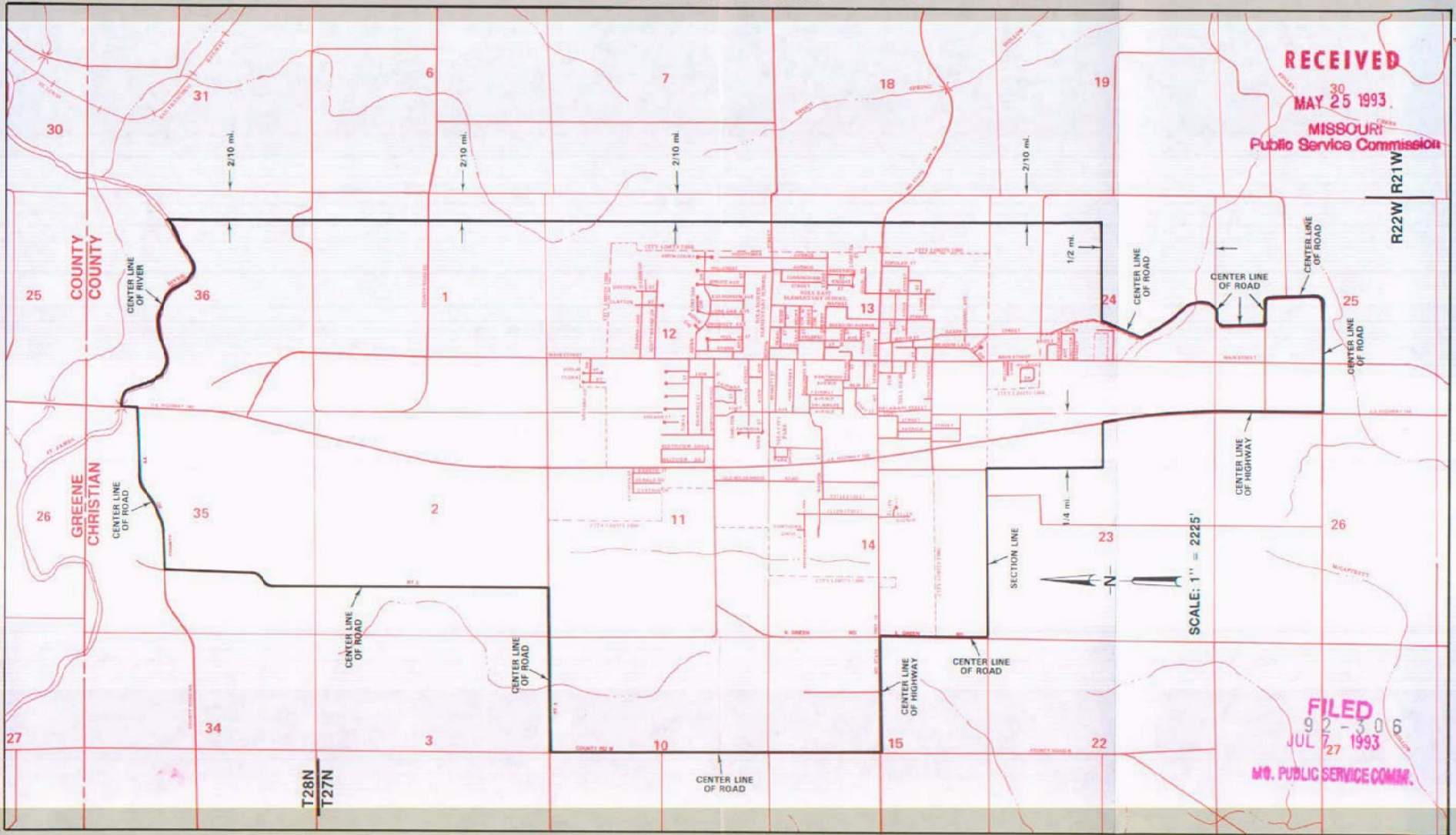
By A. D. ROBERTSON, Assistant Vice President-External Affairs
Southwestern Bell Telephone Company
St. Louis, Missouri

CANCELLED
June 29, 2007
TO-2002-185
Missouri Public
Service Commission

NO SUPPLEMENT TO THIS TARIFF WILL
BE ISSUED EXCEPT FOR THE PURPOSE OF
CANCELING THIS TARIFF.

P. S. C. Mo. No. 17
BASE RATE AREA MAP

SPRINGFIELD METROPOLITAN EXCHANGE
Nixa Zone
ORIGINAL SHEET 3-A



Issued: MAY 25, 1993

By A. D. ROBERTSON, Assistant Vice President - External Affairs
Southwestern Bell Telephone Company
St. Louis, Missouri

Effective: JULY 7, 1993

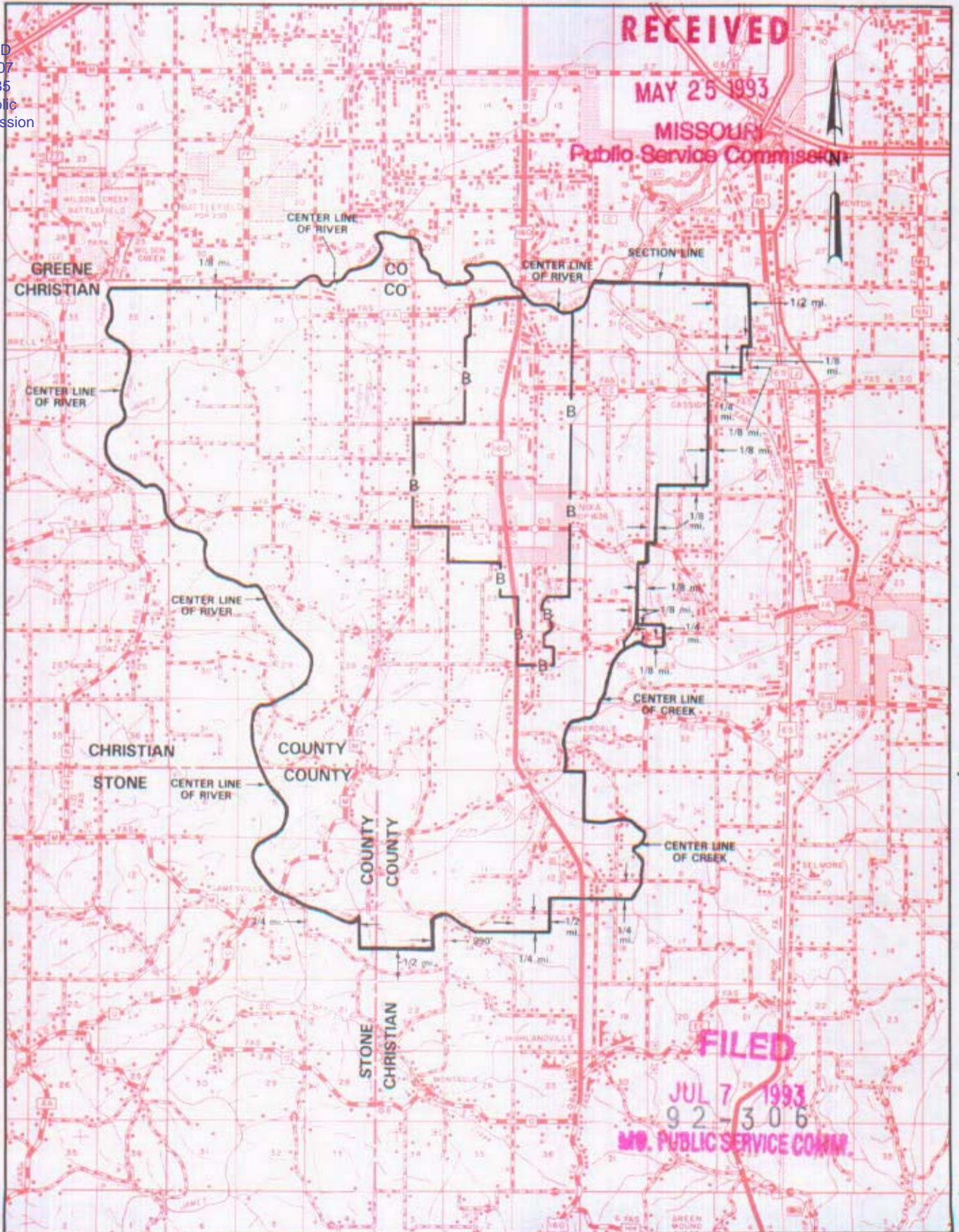
NO SUPPLEMENT TO THIS TARIFF WILL BE ISSUED EXCEPT FOR THE PURPOSE OF CANCELING THIS TARIFF.

SPRINGFIELD METROPOLITAN EXCHANGE

Nixa Zone

ORIGINAL SHEET 3-B

P. S. C. Mo. No. 17 ZONE AREA MAP



CANCELLED
June 29, 2007
TO 2002-185
Missouri Public
Service Commission

By A. D. ROBERTSON, Assistant Vice President - External Affairs
Southwestern Bell Telephone Company
St. Louis, Missouri

Issued: MAY 25, 1993

Effective: JULY 7, 1993

NO SUPPLEMENT TO THIS TARIFF WILL
BE ISSUED EXCEPT FOR THE PURPOSE OF
CANCELING THIS TARIFF.

P. S. C. Mo. No. 17
BASE RATE AREA MAP

South Nixa, Missouri

1st REVISED SHEET 2
REPLACING ORIGINAL SHEET 2

CANCELLED
June 29, 2007
70-2002-185
Missouri Public
Service Commission

RECEIVED
DEC - 7 1981
MISSOURI
Public Service Commission

THIS BASE RATE AREA IS INCLUDED IN THE NIXA EXCHANGE

FILED
DEC - 9 1981
81 - 208
Public Service Commission

DEC 07 1981

Issued: ~~XXXXXXXXXX~~

By R. R. SHOCKLEY, Vice President, Missouri
Southwestern Bell Telephone Company
St. Louis, Missouri

Effective: DEC 9, 1981

NO SUPPLEMENT TO THIS TARIFF WILL
BE ISSUED EXCEPT FOR THE PURPOSE OF
CANCELING THIS TARIFF.

P. S. C. Mo. No. 17
EXCHANGE AREA MAP

South Nixa, Missouri

5th REVISED SHEET 3
REPLACING 4th REVISED SHEET 3

CANCELLED
June 29, 2007
TO-2002-185
Missouri Public
Service Commission

RECEIVED
DEC - 7 1981
MISSOURI
Public Service Commission

T28N
T27N

THIS EXCHANGE IS INCLUDED IN THE NIXA EXCHANGE

T27N
T26N

FILED
DEC - 9 1981
81 - 208
Public Service Commission

T26N
T25N

R23W | R22W

R22W | R21W

DEC 07 1981

By R. R. SHOCKLEY, Vice President, Missouri
Southwestern Bell Telephone Company
St. Louis, Missouri

Effective: DEC 09 1981

Issued: _____