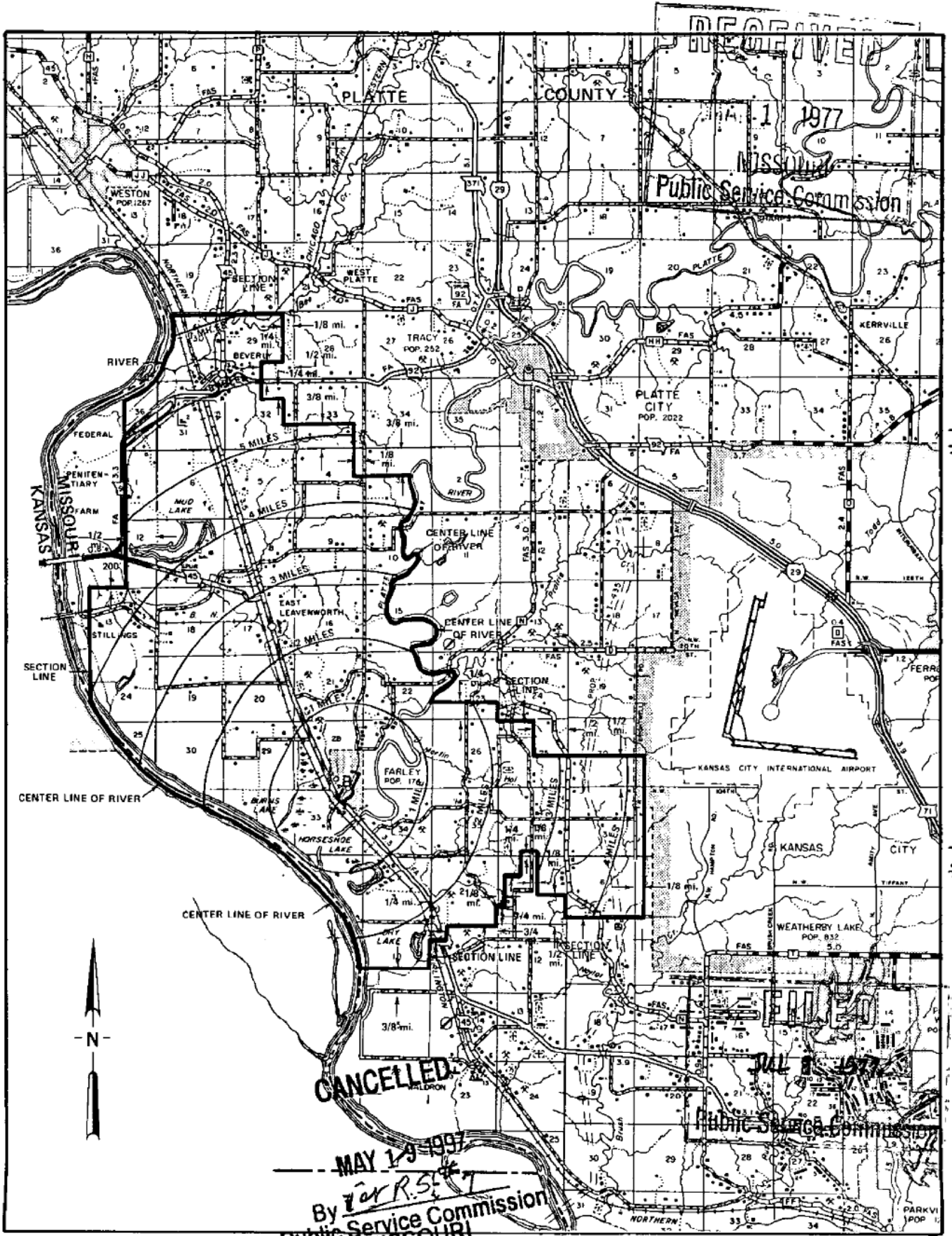


NO SUPPLEMENT TO THIS TARIFF WILL BE ISSUED EXCEPT FOR THE PURPOSE OF CANCELING THIS TARIFF.

P. S. C. Mo. No. 17  
EXCHANGE AREA MAP

Farley, Missouri

6th REVISED SHEET 3  
REPLACING 5th REVISED SHEET 3



T53N  
T52N

T52N  
T51N

R36W | R35W

R35W | R34W

By R. R. SHOCKLEY, Vice President, Missouri  
Southwestern Bell Telephone Company  
St. Louis, Missouri

Issued: March 1, 1977

Effective: JUL 8 1977

NO SUPPLEMENT TO THIS TARIFF WILL BE ISSUED EXCEPT FOR THE PURPOSE OF CANCELING THIS TARIFF.

### P. S. C. Mo. No. 17 EXCHANGE AREA MAP

Farmington, Missouri

REPLACING 1990 REVISED SHEET 3  
1991 REVISED SHEET 3

Missouri Public Commission

APR 19 1999

T37N  
T36N

CANCELLED

MISSOURI PUBLIC COMMISSION  
1993

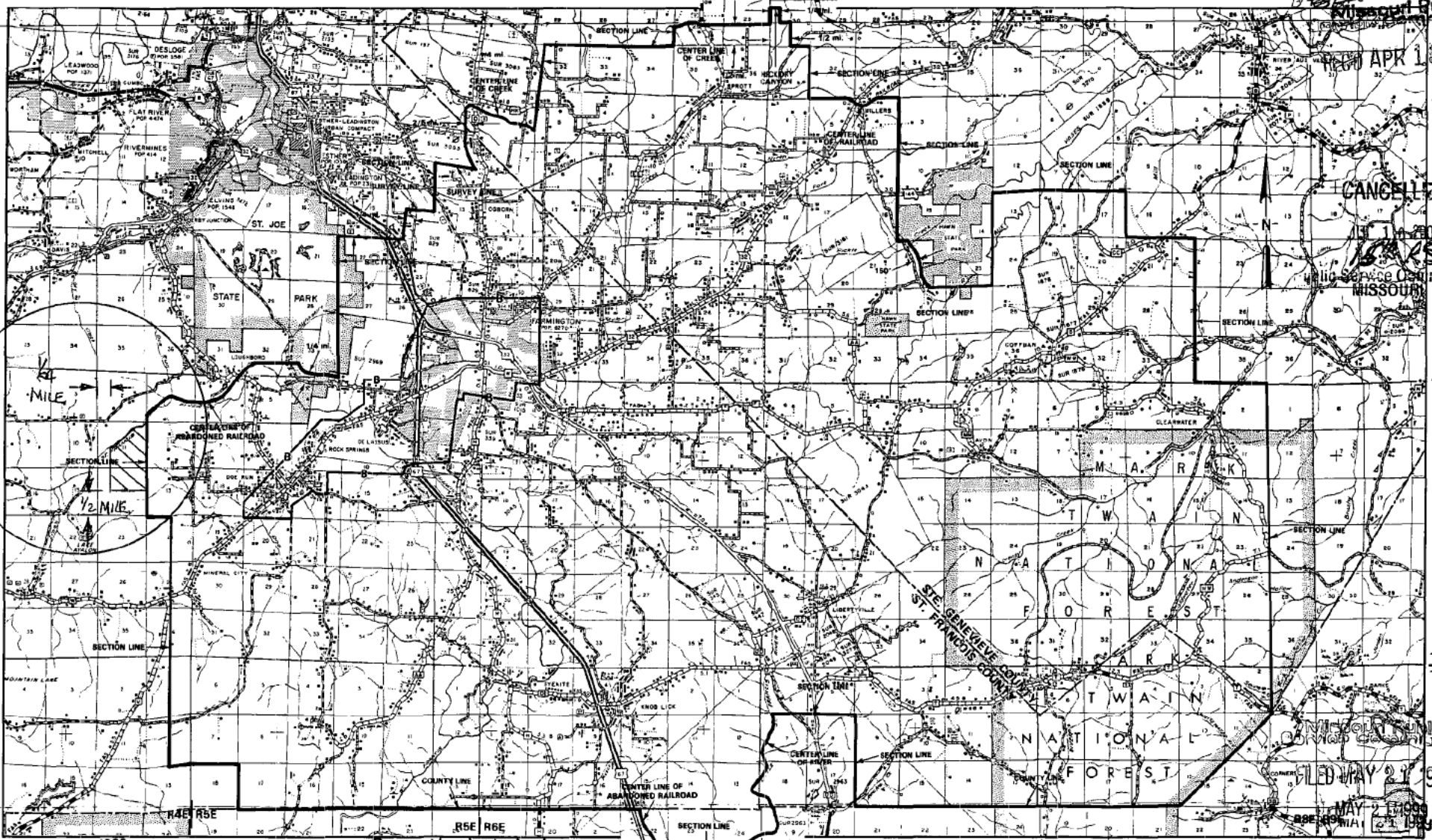
T38N  
T35N

T36N  
T34N

Missouri Public Commission

MAY 21 1999

MAY 2 1999



APR 19 1999

MAY 01 1992

Issued:

Priscilla Hill-Ardoin  
By R. D. BARRON, President, Missouri Division  
Southwestern Bell Telephone Company  
St. Louis, Missouri

R6E R7E

R7E R8E

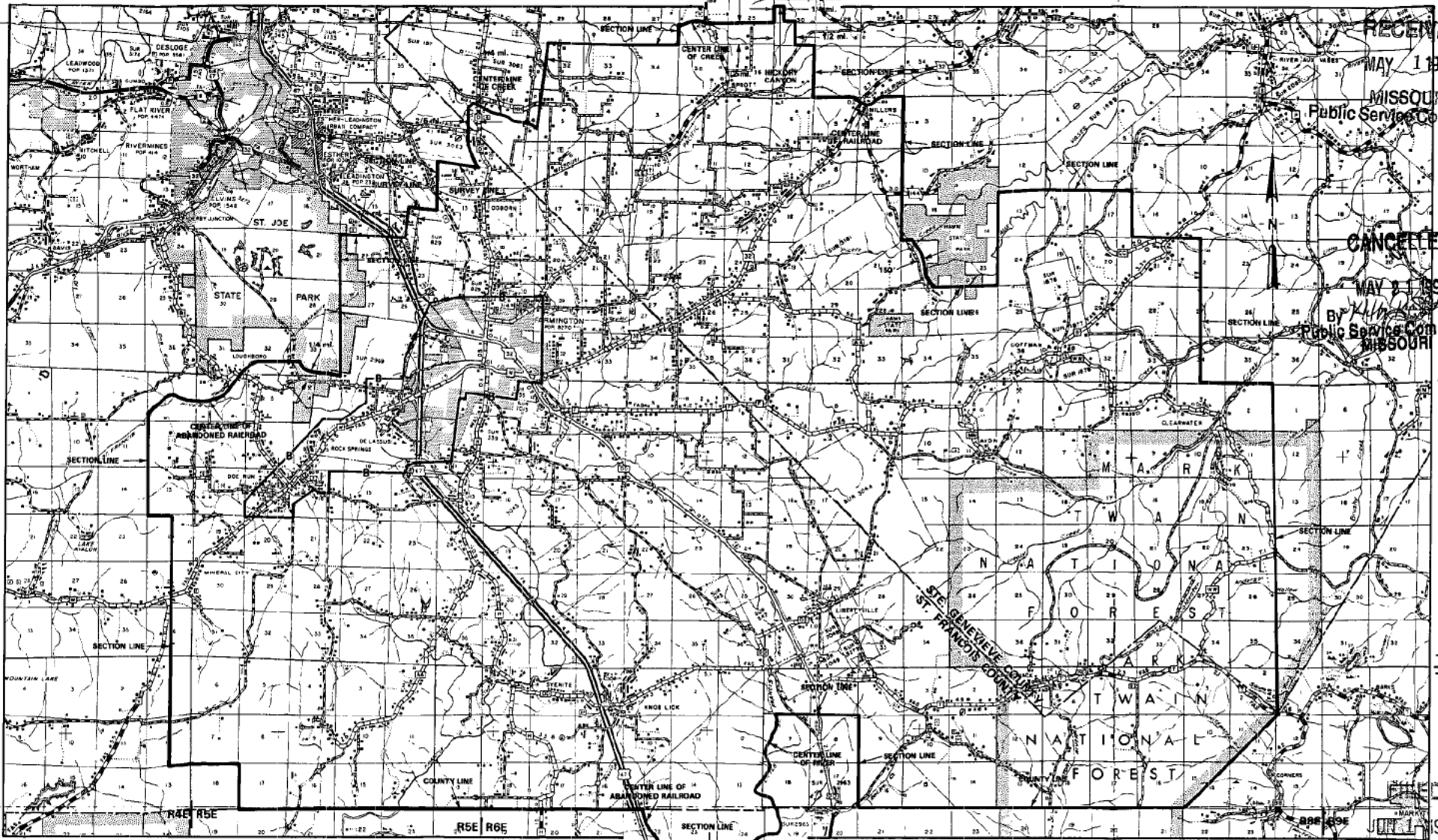
Effective: JUN 01 1992

NO SUPPLEMENT TO THIS TARIFF WILL BE ISSUED EXCEPT FOR THE PURPOSE OF CANCELING THIS TARIFF.

Farmington, Missouri

### P. S. C. Mo. No. 17 EXCHANGE AREA MAP

13th REVISED SHEET 3  
REPLACING 12th REVISED SHEET 3



RECEIVED  
MAY 1 1932

MISSOURI  
Public Service Commission

CANCELLED  
MAY 21 1939

By *[Signature]*  
Public Service Commission  
MISSOURI

T39N  
T35N

T35N  
T34N

JUN 1 1932

MAY 01 1932

Issued: \_\_\_\_\_

By R. D. BARRON, President, Missouri Division  
Southwestern Bell Telephone Company  
St. Louis, Missouri

R7E R8E

R6E R7E

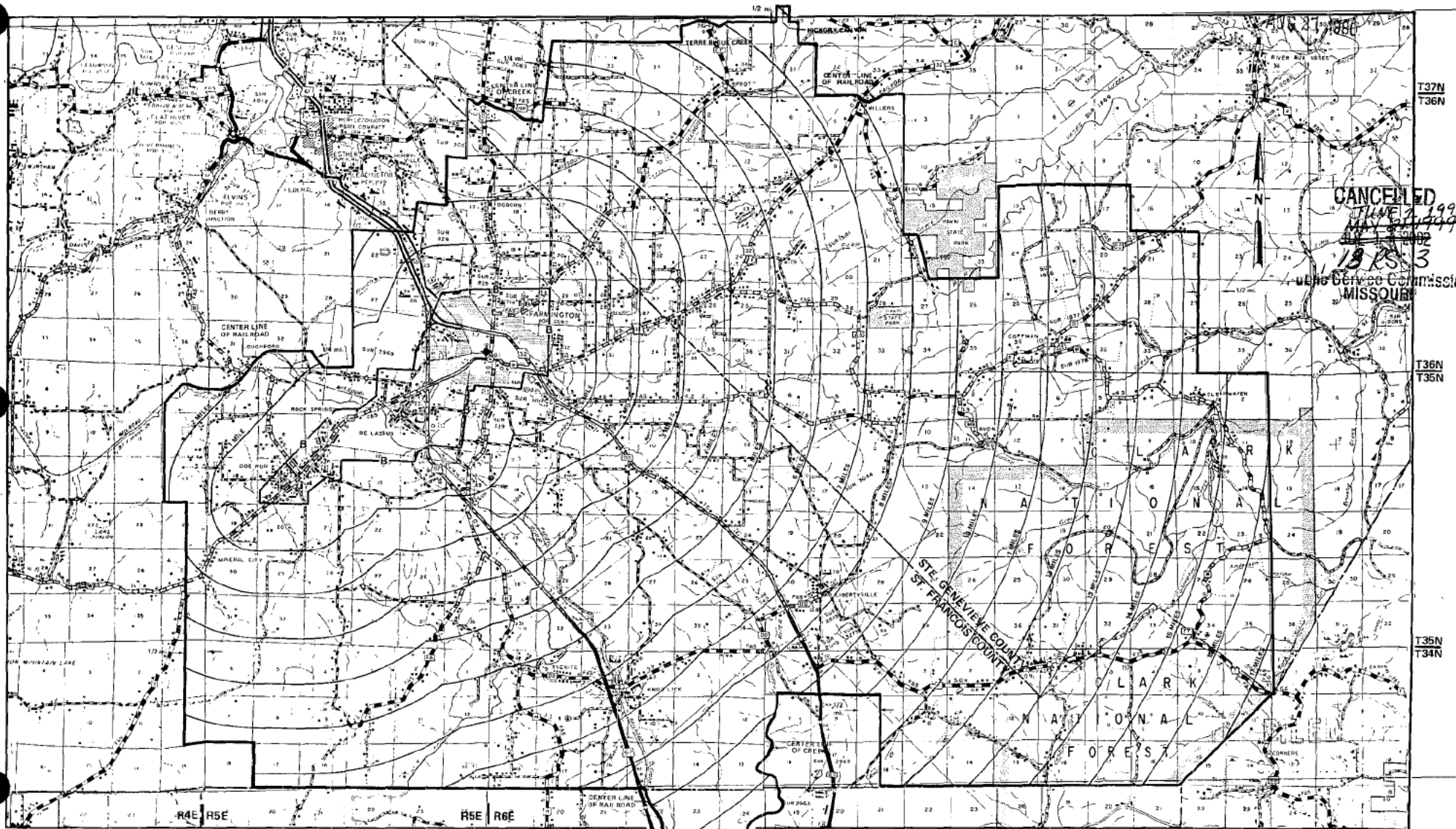
JUN 01 1932

Effective: \_\_\_\_\_

NO SUPPLEMENT TO THIS TARIFF WILL  
BE ISSUED EXCEPT FOR THE PURPOSE OF  
CANCELING THIS TARIFF.

P. S. C. Mo. No. 17  
EXCHANGE AREA MAP

Farmington, Missouri  
12th REVISED SHEET 3  
REPLACING 11th REVISED SHEET 3



By R. R. SHOCKLEY, Vice President, Missouri  
Southwestern Bell Telephone  
St. Louis, Missouri

Issued: AUG 21, 1980

Effective: SEPT 22, 1980



SBC PSC MO #17  
Fenton, Missouri  
15<sup>th</sup> Revised Sheet 2  
Replacing 14<sup>th</sup> Revised Sheet 2

# Non-Scannable Map

(Is viewable in the Data Center  
200 Madison Street, 1<sup>st</sup> Floor  
Jefferson City MO)

SBC Missouri  
Exchange Area Map  
Fenton  
PSC MO No. 17  
14<sup>th</sup> Revised Sheet 2

# Non-Scannable Map

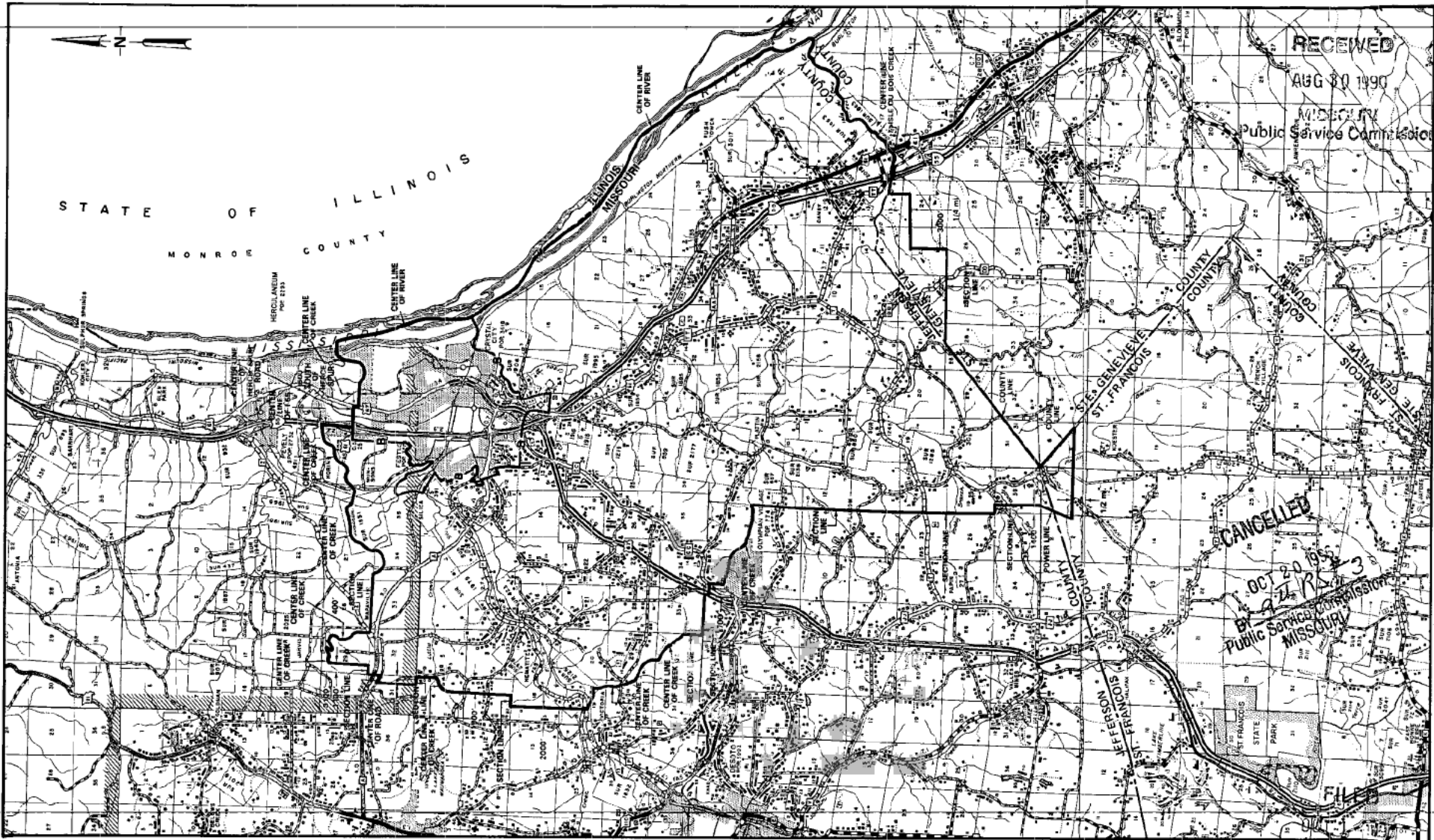
(Viewable in the Data Center  
located at:  
200 Madison Street, 1<sup>st</sup> Floor  
Jefferson City MO)

NO SUPPLEMENT TO THIS TARIFF WILL BE ISSUED EXCEPT FOR THE PURPOSE OF CANCELING THIS TARIFF.

### P. S. C. Mo. No. 17 EXCHANGE AREA MAP

Festus-Crystal City, Missouri

8th REVISED SHEET 3  
REPLACING 7th REVISED SHEET 3



RECEIVED

AUG 30 1990

MISSOURI  
Public Service Commission

CANCELLED

OCT 20 1990  
By *[Signature]*  
Public Service Commission  
Missouri

By R. D. BARRON, PRESIDENT, MISSOURI DIVISION  
Southwestern Bell Telephone Company  
St. Louis, Missouri

T41N  
T40N

T39N  
T38N

T38N  
T37N

Public Service Commission

Issued: August 30, 1990

Effective: October 1, 1990

**P.S.C. Mo. - No. 17**  
**LOCAL EXCHANGE - MISSOURI PORTION TARIFF**

Southwestern Bell Telephone  
Company d/b/a AT&T Missouri

Section 3  
43rd Revised Sheet 1  
Replacing 42nd Revised Sheet 1

**MISSOURI PORTION - FORT SCOTT, KANSAS EXCHANGE**

**I. GENERAL**

This Tariff is governed, except as otherwise specified herein, by all other Tariffs of the Southwestern Bell Telephone Company on file in the State of Missouri, which are hereby made a part of this Tariff. Unless otherwise specified, the charges quoted in this Tariff or in any other Missouri Tariff are for periods of one month, are payable monthly in advance and entitle the customer to exchange telephone service within the Fort Scott Exchange Area. This Exchange Area includes, in addition to the Missouri Portion, certain territory in the State of Kansas comprising the City of Fort Scott and vicinity, as shown on the Exchange Area Map for this exchange

**2. RATES**

- A. The rates for main service do not include a Telephone Company-provided instrument, except for Semi-Public Service, which includes one station equipped with a coin-collecting device.
- B. Within the Missouri portion of the exchange, rates will be frozen until March 1, 1995. Urban mileage charges as set forth in Paragraph C. and D. following, apply as applicable, in addition to exchange rates when service is provided outside the Base Rate Area. Exchange rates are as follows:

1. Flat Rate Service	<u>Current Rates(1)(2)</u>	
	<u>Business</u>	<u>Residence</u>
One-Party	\$75.50	\$ 24.00 (CR)
Lifeline	N/A	(3)
One-Party Multiline	75.50	N/A
PBX Trunk	75.50	14.70

- (1) For the period of November 26, 2008 through November 25, 2012, prices for residence basic local service in this exchange will be governed by Section 392.245.5(7) RSMo.
- (2) For the period of November 26, 2008 through November 25, 2012, prices for business basic local service in this exchange will be governed by Section 392.245.5(7) RSMo
- (3) A customer eligible under established criteria can receive a discount from his or her bill for residential essential local telecommunications services, in accordance with P.S.C. Mo. – No. 24, Local Exchange Tariff, Section 1.2.2.E, regarding Lifeline Service.

Issued: December 24, 2013

By JOHN SONDAG, President - Missouri  
St. Louis, Missouri

Effective: January 3, 2014

**CANCELLED**  
May 1, 2014  
Missouri Public  
Service Commission  
JI-2014-0379

**FILED**  
Missouri Public  
Service Commission  
JI-2014-0269



P.S.C. Mo. - No. 17  
LOCAL EXCHANGE - MISSOURI PORTION TARIFF

Southwestern Bell Telephone  
Company d/b/a AT&T Missouri

Section 3  
42nd Revised Sheet 1  
Replacing 41st Revised Sheet 1

MISSOURI PORTION - FORT SCOTT, KANSAS EXCHANGE

I. GENERAL

This Tariff is governed, except as otherwise specified herein, by all other Tariffs of the Southwestern Bell Telephone Company on file in the State of Missouri, which are hereby made a part of this Tariff. Unless otherwise specified, the charges quoted in this Tariff or in any other Missouri Tariff are for periods of one month, are payable monthly in advance and entitle the customer to exchange telephone service within the Fort Scott Exchange Area. This Exchange Area includes, in addition to the Missouri Portion, certain territory in the State of Kansas comprising the City of Fort Scott and vicinity, as shown on the Exchange Area Map for this exchange

2. RATES

- A. The rates for main service do not include a Telephone Company-provided instrument, except for Semi-Public Service, which includes one station equipped with a coin-collecting device.
- B. Within the Missouri portion of the exchange, rates will be frozen until March 1, 1995. Urban mileage charges as set forth in Paragraph C. and D. following, apply as applicable, in addition to exchange rates when service is provided outside the Base Rate Area. Exchange rates are as follows:

1. Flat Rate Service	Current Rates(1)(2)	
	Business	Residence
One-Party	\$75.50 (CR)	\$ 23.00
Lifeline	N/A	(3)
One-Party Multiline	75.50 (CR)	N/A
PBX Trunk	75.50 (CR)	14.70

- (1) For the period of November 26, 2008 through November 25, 2012, prices for residence basic local service in this exchange will be governed by Section 392.245.5(7) RSMo.
- (2) For the period of November 26, 2008 through November 25, 2012, prices for business basic local service in this exchange will be governed by Section 392.245.5(7) RSMo
- (3) A customer eligible under established criteria can receive a discount from his or her bill for residential essential local telecommunications services, in accordance with P.S.C. Mo. – No. 24, Local Exchange Tariff, Section 1.2.2.E, regarding Lifeline Service.

Issued: November 21, 2013

Effective: December 1, 2013

CANCELLED  
January 3, 2014  
Missouri Public  
Service Commission  
JI-2014-0269

By JOHN SONDAG, President - Missouri  
St. Louis, Missouri

FILED  
Missouri Public  
Service Commission  
JI-2014-0226

**P.S.C. Mo. - No. 17**  
**LOCAL EXCHANGE - MISSOURI PORTION TARIFF**

Southwestern Bell Telephone  
Company d/b/a AT&T Missouri

Section 3  
41st Revised Sheet 1  
Replacing 40th Revised Sheet 1

**MISSOURI PORTION - FORT SCOTT, KANSAS EXCHANGE**

**I. GENERAL**

This Tariff is governed, except as otherwise specified herein, by all other Tariffs of the Southwestern Bell Telephone Company on file in the State of Missouri, which are hereby made a part of this Tariff. Unless otherwise specified, the charges quoted in this Tariff or in any other Missouri Tariff are for periods of one month, are payable monthly in advance and entitle the customer to exchange telephone service within the Fort Scott Exchange Area. This Exchange Area includes, in addition to the Missouri Portion, certain territory in the State of Kansas comprising the City of Fort Scott and vicinity, as shown on the Exchange Area Map for this exchange

**2. RATES**

- A. The rates for main service do not include a Telephone Company-provided instrument, except for Semi-Public Service, which includes one station equipped with a coin-collecting device.
- B. Within the Missouri portion of the exchange, rates will be frozen until March 1, 1995. Urban mileage charges as set forth in Paragraph C. and D. following, apply as applicable, in addition to exchange rates when service is provided outside the Base Rate Area. Exchange rates are as follows:

1. Flat Rate Service	<u>Current Rates(1)(2)</u>	
	<u>Business</u>	<u>Residence</u>
One-Party	\$59.00 (CR)	\$ 23.00
Lifeline	N/A	(3)
One-Party Multiline	65.00 (CR)	N/A
PBX Trunk	65.00 (CR)	14.70

- (1) For the period of November 26, 2008 through November 25, 2012, prices for residence basic local service in this exchange will be governed by Section 392.245.5(7) RSMo.
- (2) For the period of November 26, 2008 through November 25, 2012, prices for business basic local service in this exchange will be governed by Section 392.245.5(7) RSMo
- (3) A customer eligible under established criteria can receive a discount from his or her bill for residential essential local telecommunications services, in accordance with P.S.C. Mo. – No. 24, Local Exchange Tariff, Section 1.2.2.E, regarding Lifeline Service.

Issued: June 25, 2013

Effective: July 5, 2013

**CANCELLED**  
December 1, 2013  
Missouri Public  
Service Commission  
JI-2014-0226

By JOHN SONDAG, President - Missouri  
St. Louis, Missouri

**FILED**  
Missouri Public  
Service Commission  
JI-2013-0608

**P.S.C. Mo. - No. 17**  
**LOCAL EXCHANGE - MISSOURI PORTION TARIFF**

Southwestern Bell Telephone  
Company d/b/a AT&T Missouri

Section 3  
40th Revised Sheet 1  
Replacing 39th Revised Sheet 1

**MISSOURI PORTION - FORT SCOTT, KANSAS EXCHANGE**

**I. GENERAL**

This Tariff is governed, except as otherwise specified herein, by all other Tariffs of the Southwestern Bell Telephone Company on file in the State of Missouri, which are hereby made a part of this Tariff. Unless otherwise specified, the charges quoted in this Tariff or in any other Missouri Tariff are for periods of one month, are payable monthly in advance and entitle the customer to exchange telephone service within the Fort Scott Exchange Area. This Exchange Area includes, in addition to the Missouri Portion, certain territory in the State of Kansas comprising the City of Fort Scott and vicinity, as shown on the Exchange Area Map for this exchange

**2. RATES**

- A. The rates for main service do not include a Telephone Company-provided instrument, except for Semi-Public Service, which includes one station equipped with a coin-collecting device.
- B. Within the Missouri portion of the exchange, rates will be frozen until March 1, 1995. Urban mileage charges as set forth in Paragraph C. and D. following, apply as applicable, in addition to exchange rates when service is provided outside the Base Rate Area. Exchange rates are as follows:

1. Flat Rate Service	<u>Current Rates(1)(2)</u>		
	<u>Business</u>	<u>Residence</u>	
One-Party	\$48.00	\$ 23.00	(CR)
Lifeline	N/A	(3)	
One-Party Multiline	62.00	N/A	(CR)
PBX Trunk	62.00 (CR)	14.70	

- (1) For the period of November 26, 2008 through November 25, 2012, prices for residence basic local service in this exchange will be governed by Section 392.245.5(7) RSMo.
- (2) For the period of November 26, 2008 through November 25, 2012, prices for business basic local service in this exchange will be governed by Section 392.245.5(7) RSMo
- (3) A customer eligible under established criteria can receive a discount from his or her bill for residential essential local telecommunications services, in accordance with P.S.C. Mo. – No. 24, Local Exchange Tariff, Section 1.2.2.E, regarding Lifeline Service.

Issued: December 24, 2012

Effective: January 3, 2013

CANCELLED  
July 5, 2013  
Missouri Public  
Service Commission  
JI-2013-0608

By JOHN SONDAG, President - Missouri  
St. Louis, Missouri

FILED  
Missouri Public  
Service Commission  
JI-2013-0285

**P.S.C. Mo. - No. 17**  
**LOCAL EXCHANGE - MISSOURI PORTION TARIFF**

Southwestern Bell Telephone  
Company d/b/a AT&T Missouri

Section 3  
39th Revised Sheet 1  
Replacing 38th Revised Sheet 1

**MISSOURI PORTION - FORT SCOTT, KANSAS EXCHANGE**

**I. GENERAL**

This Tariff is governed, except as otherwise specified herein, by all other Tariffs of the Southwestern Bell Telephone Company on file in the State of Missouri, which are hereby made a part of this Tariff. Unless otherwise specified, the charges quoted in this Tariff or in any other Missouri Tariff are for periods of one month, are payable monthly in advance and entitle the customer to exchange telephone service within the Fort Scott Exchange Area. This Exchange Area includes, in addition to the Missouri Portion, certain territory in the State of Kansas comprising the City of Fort Scott and vicinity, as shown on the Exchange Area Map for this exchange

**2. RATES**

- A. The rates for main service do not include a Telephone Company-provided instrument, except for Semi-Public Service, which includes one station equipped with a coin-collecting device.
- B. Within the Missouri portion of the exchange, rates will be frozen until March 1, 1995. Urban mileage charges as set forth in Paragraph C. and D. following, apply as applicable, in addition to exchange rates when service is provided outside the Base Rate Area. Exchange rates are as follows:

1. Flat Rate Service	<u>Current Rates(1)(2)</u>	
	<u>Business</u>	<u>Residence</u>
One-Party	\$39.00	\$ 19.50 (CR)
Lifeline	N/A	(3)
One-Party Multiline	54.50	N/A
PBX Trunk	54.50	14.70

- (1) For the period of November 26, 2008 through November 25, 2012, prices for residence basic local service in this exchange will be governed by Section 392.245.5(7) RSMo.
- (2) For the period of November 26, 2008 through November 25, 2012, prices for business basic local service in this exchange will be governed by Section 392.245.5(7) RSMo
- (3) A customer eligible under established criteria can receive a discount from his or her bill for residential essential local telecommunications services, in accordance with P.S.C. Mo. – No. 24, Local Exchange Tariff, Section 1.2.2.E, regarding Lifeline Service.

Issued: July 3, 2012

Effective: July 13, 2012

CANCELLED  
January 3, 2013  
Missouri Public  
Service Commission  
JI-2013-0285

By JOHN SONDAG, President - Missouri  
St. Louis, Missouri

FILED  
Missouri Public  
Service Commission  
JI-2013-0013

**P.S.C. Mo. - No. 17**  
**LOCAL EXCHANGE - MISSOURI PORTION TARIFF**

Southwestern Bell Telephone  
Company d/b/a AT&T Missouri

Section 3  
38th Revised Sheet 1  
Replacing 37th Revised Sheet 1

**MISSOURI PORTION - FORT SCOTT, KANSAS EXCHANGE**

**I. GENERAL**

This Tariff is governed, except as otherwise specified herein, by all other Tariffs of the Southwestern Bell Telephone Company on file in the State of Missouri, which are hereby made a part of this Tariff. Unless otherwise specified, the charges quoted in this Tariff or in any other Missouri Tariff are for periods of one month, are payable monthly in advance and entitle the customer to exchange telephone service within the Fort Scott Exchange Area. This Exchange Area includes, in addition to the Missouri Portion, certain territory in the State of Kansas comprising the City of Fort Scott and vicinity, as shown on the Exchange Area Map for this exchange

**2. RATES**

- A. The rates for main service do not include a Telephone Company-provided instrument, except for Semi-Public Service, which includes one station equipped with a coin-collecting device.
- B. Within the Missouri portion of the exchange, rates will be frozen until March 1, 1995. Urban mileage charges as set forth in Paragraph C. and D. following, apply as applicable, in addition to exchange rates when service is provided outside the Base Rate Area. Exchange rates are as follows:

1. Flat Rate Service	<u>Current Rates(1)(2)</u>	
	<u>Business</u>	<u>Residence</u>
One-Party	\$39.00 (CR)	\$ 16.50
Lifeline	N/A	(3)
One-Party Multiline	54.50 (CR)	N/A
PBX Trunk	54.50 (CR)	14.70

- (1) For the period of November 26, 2008 through November 25, 2012, prices for residence basic local service in this exchange will be governed by Section 392.245.5(7) RSMo.
- (2) For the period of November 26, 2008 through November 25, 2012, prices for business basic local service in this exchange will be governed by Section 392.245.5(7) RSMo
- (3) A customer eligible under established criteria can receive a discount from his or her bill for residential essential local telecommunications services, in accordance with P.S.C. Mo. – No. 24, Local Exchange Tariff, Section 1.2.2.E, regarding Lifeline Service.

Issued: June 25, 2012

Effective: July 5, 2012

CANCELLED  
July 13, 2012  
Missouri Public  
Service Commission  
JI-2013-0013

By JOHN SONDAG, President - Missouri  
St. Louis, Missouri

FILED  
Missouri Public  
Service Commission  
JI-2012-0834



**P.S.C. Mo. - No. 17**  
**LOCAL EXCHANGE - MISSOURI PORTION TARIFF**

Southwestern Bell Telephone  
Company d/b/a AT&T Missouri

Section 3  
37th Revised Sheet 1  
Replacing 36th Revised Sheet 1

**MISSOURI PORTION - FORT SCOTT, KANSAS EXCHANGE**

**I. GENERAL**

This Tariff is governed, except as otherwise specified herein, by all other Tariffs of the Southwestern Bell Telephone Company on file in the State of Missouri, which are hereby made a part of this Tariff. Unless otherwise specified, the charges quoted in this Tariff or in any other Missouri Tariff are for periods of one month, are payable monthly in advance and entitle the customer to exchange telephone service within the Fort Scott Exchange Area. This Exchange Area includes, in addition to the Missouri Portion, certain territory in the State of Kansas comprising the City of Fort Scott and vicinity, as shown on the Exchange Area Map for this exchange

**2. RATES**

- A. The rates for main service do not include a Telephone Company-provided instrument, except for Semi-Public Service, which includes one station equipped with a coin-collecting device.
- B. Within the Missouri portion of the exchange, rates will be frozen until March 1, 1995. Urban mileage charges as set forth in Paragraph C. and D. following, apply as applicable, in addition to exchange rates when service is provided outside the Base Rate Area. Exchange rates are as follows:

1. Flat Rate Service	<u>Current Rates(1)(2)</u>	
	<u>Business</u>	<u>Residence</u>
One-Party	\$34.00 (CR)	\$ 16.50
Lifeline	N/A	(3)
One-Party Multiline	43.00 (CR)	N/A
PBX Trunk	43.00 (CR)	14.70

- (1) For the period of November 26, 2008 through November 25, 2012, prices for residence basic local service in this exchange will be governed by Section 392.245.5(7) RSMo.
- (2) For the period of November 26, 2008 through November 25, 2012, prices for business basic local service in this exchange will be governed by Section 392.245.5(7) RSMo
- (3) A customer eligible under established criteria can receive a discount from his or her bill for residential essential local telecommunications services, in accordance with P.S.C. Mo. – No. 24, Local Exchange Tariff, Section 1.2.2.E, regarding Lifeline Service.

Issued: October 28, 2011

Effective: November 9, 2011

CANCELLED  
July 5, 2012  
Missouri Public  
Service Commission  
JI-2012-0834

By JOHN SONDAG, President - Missouri  
St. Louis, Missouri

**FILED**  
**Missouri Public**  
**Service Commission**  
**JI-2012-0194**

**P.S.C. Mo. - No. 17**  
**LOCAL EXCHANGE - MISSOURI PORTION TARIFF**

Southwestern Bell Telephone  
Company d/b/a AT&T Missouri

Section 3  
36th Revised Sheet 1  
Replacing 35th Revised Sheet 1

**MISSOURI PORTION - FORT SCOTT, KANSAS EXCHANGE**

**I. GENERAL**

This Tariff is governed, except as otherwise specified herein, by all other Tariffs of the Southwestern Bell Telephone Company on file in the State of Missouri, which are hereby made a part of this Tariff. Unless otherwise specified, the charges quoted in this Tariff or in any other Missouri Tariff are for periods of one month, are payable monthly in advance and entitle the customer to exchange telephone service within the Fort Scott Exchange Area. This Exchange Area includes, in addition to the Missouri Portion, certain territory in the State of Kansas comprising the City of Fort Scott and vicinity, as shown on the Exchange Area Map for this exchange

**2. RATES**

- A. The rates for main service do not include a Telephone Company-provided instrument, except for Semi-Public Service, which includes one station equipped with a coin-collecting device.
- B. Within the Missouri portion of the exchange, rates will be frozen until March 1, 1995. Urban mileage charges as set forth in Paragraph C. and D. following, apply as applicable, in addition to exchange rates when service is provided outside the Base Rate Area. Exchange rates are as follows:

1. Flat Rate Service	<u>Current Rates(1)(2)</u>	
	<u>Business</u>	<u>Residence</u>
One-Party	\$27.00	\$ 16.50 (CR)
Lifeline	N/A	(3)
One-Party Multiline	36.00	N/A
PBX Trunk	36.00	14.70

- (1) For the period of November 26, 2008 through November 25, 2012, prices for residence basic local service in this exchange will be governed by Section 392.245.5(7) RSMo.
- (2) For the period of November 26, 2008 through November 25, 2012, prices for business basic local service in this exchange will be governed by Section 392.245.5(7) RSMo
- (3) A customer eligible under established criteria can receive a discount from his or her bill for residential essential local telecommunications services, in accordance with P.S.C. Mo. – No. 24, Local Exchange Tariff, Section 1.2.2.E, regarding Lifeline Service.

Issued: July 1, 2011

**CANCELED**  
**November 9, 2011**  
**Missouri Public**  
**Service Commission**  
**JI-2012-0194**

By JOHN SONDAG, President - Missouri  
St. Louis, Missouri

Effective: July 13, 2011

**P.S.C. Mo. - No. 17**  
**LOCAL EXCHANGE - MISSOURI PORTION TARIFF**

Southwestern Bell Telephone  
Company d/b/a AT&T Missouri

Section 3  
35th Revised Sheet 1  
Replacing 34th Revised Sheet 1

**MISSOURI PORTION - FORT SCOTT, KANSAS EXCHANGE**

**I. GENERAL**

This Tariff is governed, except as otherwise specified herein, by all other Tariffs of the Southwestern Bell Telephone Company on file in the State of Missouri, which are hereby made a part of this Tariff. Unless otherwise specified, the charges quoted in this Tariff or in any other Missouri Tariff are for periods of one month, are payable monthly in advance and entitle the customer to exchange telephone service within the Fort Scott Exchange Area. This Exchange Area includes, in addition to the Missouri Portion, certain territory in the State of Kansas comprising the City of Fort Scott and vicinity, as shown on the Exchange Area Map for this exchange

**2. RATES**

- A. The rates for main service do not include a Telephone Company-provided instrument, except for Semi-Public Service, which includes one station equipped with a coin-collecting device.
- B. Within the Missouri portion of the exchange, rates will be frozen until March 1, 1995. Urban mileage charges as set forth in Paragraph C. and D. following, apply as applicable, in addition to exchange rates when service is provided outside the Base Rate Area. Exchange rates are as follows:

1. Flat Rate Service	<u>Current Rates(1)(2)</u>	
	<u>Business</u>	<u>Residence</u>
One-Party	\$27.00 (CR)	\$ 14.51
Lifeline	N/A	(3)
One-Party Multiline	36.00 (CR)	N/A
PBX Trunk	36.00 (CR)	14.70

- (1) For the period of November 26, 2008 through November 25, 2012, prices for residence basic local service in this exchange will be governed by Section 392.245.5(7) RSMo.
- (2) For the period of November 26, 2008 through November 25, 2012, prices for business basic local service in this exchange will be governed by Section 392.245.5(7) RSMo
- (3) A customer eligible under established criteria can receive a discount from his or her bill for residential essential local telecommunications services, in accordance with P.S.C. Mo. – No. 24, Local Exchange Tariff, Section 1.2.2.E, regarding Lifeline Service.

Issued: May 18, 2011

**CANCELED**  
**JI-2011-0671**  
**Missouri Public**  
**Service Commission**  
**JI-2011-0671**

By JOHN SONDAG, President - Missouri  
St. Louis, Missouri

Effective: May 28, 2011

**FILED**  
**Missouri Public**  
**Service Commission**  
**JI-2011-0578**

**P.S.C. Mo. - No. 17**  
**LOCAL EXCHANGE - MISSOURI PORTION TARIFF**

Southwestern Bell Telephone  
Company d/b/a AT&T Missouri

Section 3  
34th Revised Sheet 1  
Replacing 33rd Revised Sheet 1

**MISSOURI PORTION - FORT SCOTT, KANSAS EXCHANGE**

**I. GENERAL**

This Tariff is governed, except as otherwise specified herein, by all other Tariffs of the Southwestern Bell Telephone Company on file in the State of Missouri, which are hereby made a part of this Tariff. Unless otherwise specified, the charges quoted in this Tariff or in any other Missouri Tariff are for periods of one month, are payable monthly in advance and entitle the customer to exchange telephone service within the Fort Scott Exchange Area. This Exchange Area includes, in addition to the Missouri Portion, certain territory in the State of Kansas comprising the City of Fort Scott and vicinity, as shown on the Exchange Area Map for this exchange

**2. RATES**

- A. The rates for main service do not include a Telephone Company-provided instrument, except for Semi-Public Service, which includes one station equipped with a coin-collecting device.
- B. Within the Missouri portion of the exchange, rates will be frozen until March 1, 1995. Urban mileage charges as set forth in Paragraph C. and D. following, apply as applicable, in addition to exchange rates when service is provided outside the Base Rate Area. Exchange rates are as follows:

1. Flat Rate Service	<u>Current Rates(1)(2)</u>	
	<u>Business</u>	<u>Residence</u>
One-Party	\$22.00 (CR)	\$ 14.51
Lifeline	N/A	(3)
One-Party Multiline	34.00 (CR)	N/A
PBX Trunk	34.00 (CR)	14.70

- (1) For the period of November 26, 2008 through November 25, 2012, prices for residence basic local service in this exchange will be governed by Section 392.245.5(7) RSMo.
- (2) For the period of November 26, 2008 through November 25, 2012, prices for business basic local service in this exchange will be governed by Section 392.245.5(7) RSMo
- (3) A customer eligible under established criteria can receive a discount from his or her bill for residential essential local telecommunications services, in accordance with P.S.C. Mo. – No. 24, Local Exchange Tariff, Section 1.2.2.E, regarding Lifeline Service.

Issued: December 28, 2010

Effective: January 7, 2011

CANCELLED  
May 28, 2011  
Missouri Public  
Service Commission  
JI-2011-0578

By JOHN SONDAG, President - Missouri  
St. Louis, Missouri

FILED  
Missouri Public  
Service Commission  
JI-2011-0306

**P.S.C. Mo. - No. 17**  
**LOCAL EXCHANGE - MISSOURI PORTION TARIFF**

Southwestern Bell Telephone  
Company d/b/a AT&T Missouri

Section 3  
33rd Revised Sheet 1  
Replacing 32nd Revised Sheet 1

**MISSOURI PORTION - FORT SCOTT, KANSAS EXCHANGE**

**I. GENERAL**

This Tariff is governed, except as otherwise specified herein, by all other Tariffs of the Southwestern Bell Telephone Company on file in the State of Missouri, which are hereby made a part of this Tariff. Unless otherwise specified, the charges quoted in this Tariff or in any other Missouri Tariff are for periods of one month, are payable monthly in advance and entitle the customer to exchange telephone service within the Fort Scott Exchange Area. This Exchange Area includes, in addition to the Missouri Portion, certain territory in the State of Kansas comprising the City of Fort Scott and vicinity, as shown on the Exchange Area Map for this exchange

**2. RATES**

- A. The rates for main service do not include a Telephone Company-provided instrument, except for Semi-Public Service, which includes one station equipped with a coin-collecting device.
- B. Within the Missouri portion of the exchange, rates will be frozen until March 1, 1995. Urban mileage charges as set forth in Paragraph C. and D. following, apply as applicable, in addition to exchange rates when service is provided outside the Base Rate Area. Exchange rates are as follows:

1. Flat Rate Service	<u>Current Rates(1)(2)</u>	
	<u>Business</u>	<u>Residence</u>
One-Party	\$18.50	\$ 14.51 (CR)
Lifeline	N/A	(3)
One-Party Multiline	28.00	N/A
PBX Trunk	28.00	14.70

- (1) For the period of November 26, 2008 through November 25, 2012, prices for residence basic local service in this exchange will be governed by Section 392.245.5(7) RSMo.
- (2) For the period of November 26, 2008 through November 25, 2012, prices for business basic local service in this exchange will be governed by Section 392.245.5(7) RSMo
- (3) A customer eligible under established criteria can receive a discount from his or her bill for residential essential local telecommunications services, in accordance with P.S.C. Mo. – No. 24, Local Exchange Tariff, Section 1.2.2.E, regarding Lifeline Service.

Issued: June 29, 2010

Effective: July 9, 2010

CANCELLED  
January 7, 2011  
Missouri Public  
Service Commission  
JI-2011-0306

By DAVID NICHOLS, President - Missouri  
St. Louis, Missouri

FILED  
Missouri Public  
Service Commission  
JI-2010-0755



**P.S.C. Mo. - No. 17**  
**LOCAL EXCHANGE - MISSOURI PORTION TARIFF**

Southwestern Bell Telephone  
Company d/b/a AT&T Missouri

Section 3  
32nd Revised Sheet 1  
Replacing 31st Revised Sheet 1

**MISSOURI PORTION - FORT SCOTT, KANSAS EXCHANGE**

**I. GENERAL**

This Tariff is governed, except as otherwise specified herein, by all other Tariffs of the Southwestern Bell Telephone Company on file in the State of Missouri, which are hereby made a part of this Tariff. Unless otherwise specified, the charges quoted in this Tariff or in any other Missouri Tariff are for periods of one month, are payable monthly in advance and entitle the customer to exchange telephone service within the Fort Scott Exchange Area. This Exchange Area includes, in addition to the Missouri Portion, certain territory in the State of Kansas comprising the City of Fort Scott and vicinity, as shown on the Exchange Area Map for this exchange

**2. RATES**

- A. The rates for main service do not include a Telephone Company-provided instrument, except for Semi-Public Service, which includes one station equipped with a coin-collecting device.
- B. Within the Missouri portion of the exchange, rates will be frozen until March 1, 1995. Urban mileage charges as set forth in Paragraph C. and D. following, apply as applicable, in addition to exchange rates when service is provided outside the Base Rate Area. Exchange rates are as follows:

1. Flat Rate Service	<u>Current Rates(1)(2)</u>	
	<u>Business</u>	<u>Residence</u>
One-Party	\$18.50 (CR)	\$ 11.51
Lifeline	N/A	(3)
One-Party Multiline	28.00 (CR)	N/A
PBX Trunk	28.00 (CR)	14.70

- (1) For the period of November 26, 2008 through November 25, 2012, prices for residence basic local service in this exchange will be governed by Section 392.245.5(7) RSMo.
- (2) For the period of November 26, 2008 through November 25, 2012, prices for business basic local service in this exchange will be governed by Section 392.245.5(7) RSMo
- (3) A customer eligible under established criteria can receive a discount from his or her bill for residential essential local telecommunications services, in accordance with P.S.C. Mo. – No. 24, Local Exchange Tariff, Section 1.2.2.E, regarding Lifeline Service.

**P.S.C. Mo. - No. 17  
LOCAL EXCHANGE - MISSOURI PORTION TARIFF**

Southwestern Bell Telephone  
Company d/b/a AT&T Missouri

Section 3  
31st Revised Sheet 1  
Replacing 30th Revised Sheet 1

**MISSOURI PORTION - FORT SCOTT, KANSAS EXCHANGE**

(AT)

**I. GENERAL**

This Tariff is governed, except as otherwise specified herein, by all other Tariffs of the Southwestern Bell Telephone Company on file in the State of Missouri, which are hereby made a part of this Tariff. Unless otherwise specified, the charges quoted in this Tariff or in any other Missouri Tariff are for periods of one month, are payable monthly in advance and entitle the customer to exchange telephone service within the Fort Scott Exchange Area. This Exchange Area includes, in addition to the Missouri Portion, certain territory in the State of Kansas comprising the City of Fort Scott and vicinity, as shown on the Exchange Area Map for this exchange

**2. RATES**

- A. The rates for main service do not include a Telephone Company-provided instrument, except for Semi-Public Service, which includes one station equipped with a coin-collecting device.
- B. Within the Missouri portion of the exchange, rates will be frozen until March 1, 1995. Urban mileage charges as set forth in Paragraph C. and D. following, apply as applicable, in addition to exchange rates when service is provided outside the Base Rate Area. Exchange rates are as follows:

1. Flat Rate Service	Current Rates(1)(2)		(AT)
	Business	Residence	
One-Party	\$17.56	\$ 11.51	(CR)
Lifeline	N/A	(3)	(CT)
One-Party Multiline	20.60	N/A	
PBX Trunk	29.20	14.70	

- (1) For the period of November 26, 2008 through November 25, 2012, prices for residence basic local service in this exchange will be governed by Section 392.245.5(7) RSMo. (AT)
- (2) For the period of November 26, 2008 through November 25, 2012, prices for business basic local service in this exchange will be governed by Section 392.245.5(7) RSMo (AT)
- (3) A customer eligible under established criteria can receive a discount from his or her bill for residential essential local telecommunications services, in accordance with P.S.C. Mo. – No. 24, Local Exchange Tariff, Section 1.2.2.E, regarding Lifeline Service. (CT)

Issued: July 2, 2009

Effective: July 12, 2009

CANCELLED  
January 7, 2010  
Missouri Public  
Service Commission  
JI-2010-0424

By DAVID NICHOLS, President - Missouri  
St. Louis, Missouri

Filed  
Missouri Public  
Service Commission  
JI-2010-0004

No Supplement to this tariff will be issued except for the purpose of canceling this tariff.

Missouri Portion-  
Fort Scott, Kansas Exchange  
30th Revised Sheet 1  
Replacing 29th Revised Sheet 1

LOCAL EXCHANGE TARIFF

I. GENERAL

This Tariff is governed, except as otherwise specified herein, by all other Tariffs of the Southwestern Bell Telephone Company on file in the State of Missouri, which are hereby made a part of this Tariff. Unless otherwise specified, the charges quoted in this Tariff or in any other Missouri Tariff are for periods of one month, are payable monthly in advance and entitle the customer to exchange telephone service within the Fort Scott Exchange Area. This Exchange Area includes, in addition to the Missouri Portion, certain territory in the State of Kansas comprising the City of Fort Scott and vicinity, as shown on the Exchange Area Map for this exchange

II. RATES

- A. The rates for main service do not include a Telephone Company-provided instrument, except for Semi-Public Service, which includes one station equipped with a coin-collecting device.
- B. Within the Missouri portion of the exchange, rates will be frozen until March 1, 1995. Urban mileage charges as set forth in Paragraph C. and D. following, apply as applicable, in addition to exchange rates when service is provided outside the Base Rate Area. Exchange rates are as follows:

1. Flat Rate Service	Current Rates(1)	
	<u>Business</u>	<u>Residence</u>
One-Party	\$17.56(CR)	\$ 9.51(CR)
Lifeline	N/A	(2)
One-Party Multiline	20.60	N/A
PBX Trunk	29.20	14.70

- (1) See Sheet 1.02 for maximum allowable rates.
- (2) A customer eligible under established criteria can receive a discount from his or her bill for residential essential local telecommunications services, in accordance with P.S.C. Mo. – No. 24, Local Exchange Tariff, Section 1.2.2.E, regarding Lifeline Service.

Issued: October 17, 2005

Effective: December 1, 2005

By CINDY BRINKLEY, President-SBC Missouri  
Southwestern Bell Telephone, L.P., d/b/a SBC Missouri  
St. Louis, Missouri



Cancelled  
July 12, 2009  
Missouri Public  
Service Commission  
JI-2010-0004

No Supplement to this tariff will be issued except for the purpose of canceling this tariff.

Missouri Portion-  
Fort Scott, Kansas Exchange  
29th Revised Sheet 1  
Replacing 28th Revised Sheet 1

(RT)

LOCAL EXCHANGE TARIFF

I. GENERAL

This Tariff is governed, except as otherwise specified herein, by all other Tariffs of the Southwestern Bell Telephone Company on file in the State of Missouri, which are hereby made a part of this Tariff. Unless otherwise specified, the charges quoted in this Tariff or in any other Missouri Tariff are for periods of one month, are payable monthly in advance and entitle the customer to exchange telephone service within the Fort Scott Exchange Area. This Exchange Area includes, in addition to the Missouri Portion, certain territory in the State of Kansas comprising the City of Fort Scott and vicinity, as shown on the Exchange Area Map for this exchange

II. RATES

- A. The rates for main service do not include a Telephone Company-provided instrument, except for Semi-Public Service, which includes one station equipped with a coin-collecting device.
- B. Within the Missouri portion of the exchange, rates will be frozen until March 1, 1995. Urban mileage charges as set forth in Paragraph C. and D. following, apply as applicable, in addition to exchange rates when service is provided outside the Base Rate Area. Exchange rates are as follows:

		Current Rates(1)	
		<u>Business</u>	<u>Residence</u>
(CT)(CR)	1. Flat Rate Service		
	One-Party	\$17.91	\$ 9.70
	Lifeline	N/A	(2)
	One-Party Multiline	20.60	N/A
	PBX Trunk	29.20	14.70

**CANCELLED**

DEC 01 2005

By 30<sup>th</sup> RS 1  
Public Service Commission  
MISSOURI

- (1) See Sheet 1.02 for maximum allowable rates.
- (AT) (2) A customer eligible under established criteria can receive a discount from his or her bill for residential essential local telecommunications services, in accordance with P.S.C. Mo. – No. 24, Local Exchange Tariff, Section 1.2.2.E, regarding Lifeline Service.

Issued: April 1, 2005

Effective: May 1, 2005

By CINDY BRINKLEY, President-SBC Missouri  
Southwestern Bell Telephone, L.P., d/b/a SBC Missouri  
St. Louis, Missouri

TO-1998-0329

**FILED  
MO PSC**

No Supplement to this tariff will be issued except for the purpose of canceling this tariff.

Missouri Portion-  
Fort Scott, Kansas, Exchange  
28th Revised Sheet 1  
Replacing 27th Revised Sheet 1

SOUTHWESTERN BELL TELEPHONE COMPANY  
LOCAL EXCHANGE TARIFF

I. GENERAL

This Tariff is governed, except as otherwise specified herein, by all other Tariffs of the Southwestern Bell Telephone Company on file in the State of Missouri, which are hereby made a part of this Tariff. Unless otherwise specified, the charges quoted in this Tariff or in any other Missouri Tariff are for periods of one month, are payable monthly in advance and entitle the customer to exchange telephone service within the Fort Scott Exchange Area. This Exchange Area includes, in addition to the Missouri Portion, certain territory in the State of Kansas comprising the City of Fort Scott and vicinity, as shown on the Exchange Area Map for this exchange

II. RATES

- A. The rates for main service do not include a Telephone Company-provided instrument, except for Semi-Public Service, which includes one station equipped with a coin-collecting device.
- B. Within the Missouri portion of the exchange, rates will be frozen until March 1, 1995. Urban mileage charges as set forth in Paragraph C. and D. following, apply as applicable, in addition to exchange rates when service is provided outside the Base Rate Area. Exchange rates are as follows:

1. Flat Rate Service	Current Rates(1)	
	Business	Residence
One-Party	\$17.91(CR)	\$ 9.70(CR)
Lifeline(2)	N/A	6.20(CR)
One-Party Multiline	20.60	N/A
PBX Trunk	29.20	14.70

**CANCELLED**

**MAY 01 2005**

*294hRS1*

**Public Service Commission  
MISSOURI**

- (1) See Sheet 1.02 for maximum allowable rates.
- (2) See P.S.C. Mo. – No. 24, Local Exchange Tariff, Section 1.2.2.E, for description, terms and conditions related to Lifeline Service.

Issued: October 15, 2004

Effective: December 1, 2004

By CINDY BRINKLEY, President-SBC Missouri  
Southwestern Bell Telephone, L.P., d/b/a SBC Missouri  
St. Louis, Missouri

**FILED  
MO PSC**



No Supplement to this tariff will be issued except for the purpose of canceling this tariff.

Missouri Portion-  
Fort Scott, Kansas, Exchange  
27th Revised Sheet 1  
Replacing 26th Revised Sheet 1  
Missouri Public

SOUTHWESTERN BELL TELEPHONE COMPANY Service Commission  
LOCAL EXCHANGE TARIFF

REC'D MAY 10 2004

I. GENERAL

This Tariff is governed, except as otherwise specified herein, by all other Tariffs of the Southwestern Bell Telephone Company on file in the State of Missouri, which are hereby made a part of this Tariff. Unless otherwise specified, the charges quoted in this Tariff or in any other Missouri Tariff are for periods of one month, are payable monthly in advance and entitle the customer to exchange telephone service within the Fort Scott Exchange Area. This Exchange Area includes, in addition to the Missouri Portion, certain territory in the State of Kansas comprising the City of Fort Scott and vicinity, as shown on the Exchange Area Map for this exchange

II. RATES

- A. The rates for main service do not include a Telephone Company-provided instrument, except for Semi-Public Service, which includes one station equipped with a coin-collecting device.
- B. Within the Missouri portion of the exchange, rates will be frozen until March 1, 1995. Urban mileage charges as set forth in Paragraph C. and D. following, apply as applicable, in addition to exchange rates when service is provided outside the Base Rate Area. Exchange rates are as follows:

		Current Rates(1)	
		Business	Residence
1.	Flat Rate Service		
	One-Party	\$18.40	\$ 9.97
(AT)	Lifeline(2)	N/A	6.47(NR)
	One-Party Multiline	20.60	N/A
	PBX Trunk	29.20	14.70

**CANCELLED**

DEC 01 2004  
By *284RSI*  
Public Service Commission  
MISSOURI

- (1) See Sheet 1.02 for maximum allowable rates.
- (AT) (2) See P.S.C. Mo. – No. 24, Local Exchange Tariff, Section 1.2.2.E, for description, terms and conditions related to Lifeline Service.

Issued: May 10, 2004

Effective: June 9, 2004

By CINDY BRINKLEY, President-SBC Missouri  
Southwestern Bell Telephone, L.P., d/b/a SBC Missouri  
St. Louis, Missouri

Missouri Public  
Service Commission

FILED JUN 09 2004

No Supplement to this tariff will be issued except for the purpose of canceling this tariff.

Missouri Portion-  
Fort Scott, Kansas, Exchange  
26th Revised Sheet 1  
Replacing 25th Revised Sheet 1

SOUTHWESTERN BELL TELEPHONE COMPANY  
LOCAL EXCHANGE TARIFF

REC'D OCT 15 2003

I. GENERAL

Service Commission

This Tariff is governed, except as otherwise specified herein, by all other Tariffs of the Southwestern Bell Telephone Company on file in the State of Missouri, which are hereby made a part of this Tariff. Unless otherwise specified, the charges quoted in this Tariff or in any other Missouri Tariff are for periods of one month, are payable monthly in advance and entitle the customer to exchange telephone service within the Fort Scott Exchange Area. This Exchange Area includes, in addition to the Missouri Portion, certain territory in the State of Kansas comprising the City of Fort Scott and vicinity, as shown on the Exchange Area Map for this exchange

II. RATES

- A. The rates for main service do not include a Telephone Company-provided instrument, except for Semi-Public Service, which includes one station equipped with a coin-collecting device.
- B. Within the Missouri portion of the exchange, rates will be frozen until March 1, 1995. Urban mileage charges as set forth in Paragraph C. and D. following, apply as applicable, in addition to exchange rates when service is provided outside the Base Rate Area. Exchange rates are as follows:

	Current Rates(1)	
	Business	Residence
1. Flat Rate Service		
One-Party	\$18.40(CR)	\$ 9.97
One-Party Multiline	20.60	N/A
PBX Trunk	29.20	14.70

**CANCELLED**  
JUN 08 2004  
By *27 HRS*  
Public Service Commission  
MISSOURI

(1) See Sheet 1.02 for maximum allowable rates.

Issued: October 15, 2003

Effective: December 1, 2003

By CINDY BRINKLEY, President-SBC Missouri  
Southwestern Bell Telephone, L.P., d/b/a SBC Missouri  
St. Louis, Missouri

Missouri Public  
Service Commission

FILED DEC 01 2003

No Supplement to this tariff will be issued except for the purpose of canceling this tariff.

Missouri Portion-  
Fort Scott, Kansas, Exchange  
25th Revised Sheet 1  
Replacing 24th Revised Sheet 1

SOUTHWESTERN BELL TELEPHONE COMPANY  
LOCAL EXCHANGE TARIFF

Missouri Public  
Service Commission

I. GENERAL

REC'D OCT 15 2002

This Tariff is governed, except as otherwise specified herein, by all other Tariffs of the Southwestern Bell Telephone Company on file in the State of Missouri, which are hereby made a part of this Tariff. Unless otherwise specified, the charges quoted in this Tariff or in any other Missouri Tariff are for periods of one month, are payable monthly in advance and entitle the customer to exchange telephone service within the Fort Scott Exchange Area. This Exchange Area includes, in addition to the Missouri Portion, certain territory in the State of Kansas comprising the City of Fort Scott and vicinity, as shown on the Exchange Area Map for this exchange

II. RATES

- A. The rates for main service do not include a Telephone Company-provided instrument, except for Semi-Public Service, which includes one station equipped with a coin-collecting device.
- B. Within the Missouri portion of the exchange, rates will be frozen until March 1, 1995. Urban mileage charges as set forth in Paragraph C. and D. following, apply as applicable, in addition to exchange rates when service is provided outside the Base Rate Area. Exchange rates are as follows:

1. Flat Rate Service	Current Rates(1)	
	Business	Residence
One-Party	\$18.41(CR)	\$9.97(CR)
One-Party Multiline	20.60	N/A
PBX Trunk	29.20	14.70

**CANCELLED**

DEC 01 2003  
by 26th BS 1  
Public Service Commission  
MISSOURI

Missouri Public  
Service Commission

FILED DEC 01 2002

(MT)

(MT)

(CT)

(1) See Sheet 1.02 for maximum allowable rates.

Issued: October 15, 2002

Effective: December 1, 2002

By CINDY BRINKLEY, President-Missouri  
Southwestern Bell Telephone, L.P., d/b/a Southwestern Bell Telephone Company  
St. Louis, Missouri

No supplement to this tariff will be issued except for the purpose of canceling this tariff.

MISSOURI PORTION-FORT SCOTT, KANSAS, EXCHANGE

24th Revised Sheet 1

Replacing 23rd Revised Sheet

Missouri Public

SOUTHWESTERN BELL TELEPHONE COMPANY LOCAL EXCHANGE TARIFF

REC'D OCT 01 2001

I. GENERAL

Service Commission

This Tariff is governed, except as otherwise specified herein, by all other Tariffs of the Southwestern Bell Telephone Company on file in the State of Missouri, which are hereby made a part of this Tariff. Unless otherwise specified, the charges quoted in this Tariff or in any other Missouri Tariff are for periods of one month, are payable monthly in advance and entitle the customer to exchange telephone service within the Fort Scott Exchange Area. This Exchange Area includes, in addition to the Missouri Portion, certain territory in the State of Kansas comprising the City of Fort Scott and vicinity, as shown on the Exchange Area Map for this exchange.

II. RATES

- A. The rates for main service do not include a Telephone Company-provided instrument, except for Semi-Public Service, which includes one station equipped with a coin-collecting device.
- B. Within the Missouri portion of the exchange, rates will be frozen until March 1, 1995. Urban mileage charges as set forth in Paragraph C. and D. following, apply as applicable, in addition to exchange rates when service is provided outside the Base Rate Area. Exchange rates are as follows:

1. Flat Rate Service	Current rates (1)	
	Business	Residence
One-Party	\$18.24(CR)	\$9.89(CR)
One-Party Multiline	20.60	N/A
PBX Trunk	29.20	14.70

CANCELLED

DEC 01 2002

264KRS1  
Public Service Commission  
MISSOURI

- C. The following urban mileage charge applies to those customers provided exchange service located outside the base rate area:

Urban Mileage Charge, per line	Current rates (1)	
	USOC ILS1H	Monthly Rate \$4.53(CR)

- D. The following urban mileage charge applies to former two-party customers who were located two miles beyond the Suburban Service Area boundary prior to the conversion of the exchange to one-party service. The charge applies to "existing installations, at existing locations, for existing customers:"

Urban Mileage Charge, per line	Current rates (1)	
	USOC XUDV3	Monthly Rate \$3.39(CR)

(1) See Sheet 1.01 for maximum allowable rates.

Issued: October 1, 2001

Effective: December 1, 2001

By JAN NEWTON, President-Missouri  
Southwestern Bell Telephone Company  
St. Louis, Missouri

Missouri Public

FILED DEC 01 2001

Service Commission

No supplement to this tariff will be issued except for the purpose of canceling this tariff.

MISSOURI PORTION-FORT SCOTT, KANSAS, EXCHANGE  
 23rd Revised Sheet I  
 Replacing 22nd Revised Sheet I

SOUTHWESTERN BELL TELEPHONE COMPANY  
 LOCAL EXCHANGE TARIFF

Missouri Public Service Commission

REC'D OCT 02 2000

I. GENERAL

This Tariff is governed, except as otherwise specified herein, by all other Tariffs of the Southwestern Bell Telephone Company on file in the State of Missouri, which are hereby made a part of this Tariff. Unless otherwise specified, the charges quoted in this Tariff or in any other Missouri Tariff are for periods of one month, are payable monthly in advance and entitle the customer to exchange telephone service within the Fort Scott Exchange Area. This Exchange Area includes, in addition to the Missouri Portion, certain territory in the State of Kansas comprising the City of Fort Scott and vicinity, as shown on the Exchange Area Map for this exchange.

II. RATES

- A. The rates for main service do not include a Telephone Company-provided instrument, except for Semi-Public Service, which includes one station equipped with a coin-collecting device.
- B. Within the Missouri portion of the exchange, rates will be frozen until March 1, 1995. Urban mileage charges as set forth in Paragraph C. and D. following, apply as applicable, in addition to exchange rates when service is provided outside the Base Rate Area. Exchange rates are as follows:

(AT)

CURRENT RATES (1)

1. Flat Rate Service	<u>Business</u>	<u>Residence</u>
One-Party	\$18.38(CR)	\$9.96(CR)
One-Party Multiline	20.60	N/A
PBX Trunk	29.20	14.70

(RT)

- C. The following urban mileage charge applies to those customers provided exchange service located outside the base rate area:

(AT)

CURRENT RATES (1)

Urban Mileage Charge, per line	<u>USOC</u> ILSIH	<u>Monthly Rate</u> \$4.56(CR)
--------------------------------	----------------------	-----------------------------------

- D. The following urban mileage charge applies to former two-party customers who were located two miles beyond the Suburban Service Area boundary prior to the conversion of the exchange to one-party service. The charge applies to "existing installations, at existing locations, for existing customers:"

(AT)

**CANCELLED**

CURRENT RATES (1)

Urban Mileage Charge, per line	<u>USOC</u> XUDV3	<u>Monthly Rate</u> \$3.42(CR)
--------------------------------	----------------------	-----------------------------------

DEC 01 2001

Missouri Public Service Commission  
 MISSOURI

(AT)

(1) See Sheet 1.01 for maximum allowable rates.

FILED DEC 01 2000

Issued: October 2, 2000

Effective: December 1, 2000

By JAN NEWTON, President-Missouri  
 Southwestern Bell Telephone Company  
 St. Louis, Missouri

No supplement to this tariff will be issued except for the purpose of canceling this tariff.

MISSOURI PORTION-FORT SCOTT, KANSAS, EXCHANGE  
22nd Revised Sheet 1  
Replacing 21st Revised Sheet 1

**RECEIVED**

SOUTHWESTERN BELL TELEPHONE COMPANY  
LOCAL EXCHANGE TARIFF

JUL 31 1996

I. GENERAL

**MISSOURI  
Public Service Commission**

This Tariff is governed, except as otherwise specified herein, by the Tariffs of the Southwestern Bell Telephone Company on file in the State of Missouri, which are hereby made a part of this Tariff. Unless otherwise specified, the charges quoted in this Tariff or in any other Missouri Tariff are for periods of one month, are payable monthly in advance and entitle the customer to exchange telephone service within the Fort Scott Exchange Area. This Exchange Area includes, in addition to the Missouri Portion, certain territory in the State of Kansas comprising the City of Fort Scott and vicinity, as shown on the Exchange Area Map for this exchange.

II. RATES

- A. The rates for main service do not include a Telephone Company-provided instrument, except for Semi-Public Service, which includes one station equipped with a coin-collecting device.
- B. Within the Missouri portion of the exchange, rates will be frozen until March 1, 1995. Urban mileage charges as set forth in Paragraph C. and D. following, apply as applicable, in addition to exchange rates when service is provided outside the Base Rate Area. Exchange rates are as follows:

1. Flat Rate Service	<u>Business</u>	<u>Residence</u>
One-Party . . . . .	(CR) \$18.55	\$10.05
Semi-Public . . . . .	(C) 23.00	N/A
One-Party Multiline . . . . .	(CR) 20.60	N/A
PBX Trunk . . . . .	(CR) 29.20	14.70

- C. The following urban mileage charge applies to those customers provided exchange service located outside the base rate area:

	<u>USOC</u>	<u>Monthly Rate</u>
Urban Mileage Charge, per line	1LS1H	\$4.60

- D. The following urban mileage charge applies to former two-party customers who were located two miles beyond the Suburban Service Area boundary prior to the conversion of the exchange to one-party service. The charge applies to "existing installations, at existing locations, for existing customers:"

	<u>USOC</u>	<u>Monthly Rate</u>
Urban Mileage Charge, per line	XUDV3	\$3.45

**CANCELLED**

Issued:

JUL 31 1996

DEC 01 2000

Effective:

AUG 30 1996

**FILED**

By *23ra RSI*  
HORACE WILKINS, JR., President-Missouri  
Southwestern Bell Telephone Company  
St. Louis, Missouri

AUG 30 1996

**MO. PUBLIC SERVICE COMM**



No supplement to this tariff will be issued except for the purpose of canceling this tariff.

MISSOURI PORTION-FORT SCOTT, KANSAS EXCHANGE  
21st Revised Sheet 1  
Replacing 20th Revised Sheet 1

RECEIVED

SOUTHWESTERN BELL TELEPHONE COMPANY  
LOCAL EXCHANGE TARIFF

DEC 4 1992

I. GENERAL

MO. PUBLIC SERVICE COMM.

This Tariff is governed, except as otherwise specified herein, by all other Tariffs of the Southwestern Bell Telephone Company on file in the State of Missouri, which are hereby made a part of this Tariff. Unless otherwise specified, the charges quoted in this Tariff or in any other Missouri Tariff are for periods of one month, are payable monthly in advance and entitle the customer to exchange telephone service within the Fort Scott Exchange Area. This Exchange Area includes, in addition to the Missouri Portion, all territory in the State of Kansas comprising the City of Fort Scott and vicinity, as shown on the Exchange Area Map for this exchange.

CANCELLED

II. RATES

A. The rates for main service do not include a Telephone Company provided equipment, except for Semi-Public Service, which includes one station with a coin-collecting device.

AUG 30 1996  
BY *[Signature]*  
Public Service Commission  
MISSOURI

(CP) B. Within the Missouri portion of the exchange, rates will be frozen until March 1, 1995. Urban mileage charges as set forth in Paragraph C. and D. following, apply as applicable, in addition to exchange rates when service is provided outside the Base Rate Area. Exchange rates are as follows:

1. Flat Rate Service		Business	Residence
(RT)	One-Party . . . . .	\$16.80 (DR)	\$ 9.80 (DR)
	Semi-Public . . . . .	7.98	N/A
	One-Party Multiline . . . . .	18.60	N/A
(RT)	PBX Trunk . . . . .	26.10 (DR)	14.30 (DR)

(AT) C. The following urban mileage charge applies to those customers provided exchange service located outside the base rate area:

Urban Mileage Charge, per line	USOC 1LS1H	Monthly Rate (NR)
		\$4.60

D. The following urban mileage charge applies to former two-party customers who were located two miles beyond the Suburban Service Area boundary prior to the conversion of the exchange to one-party service. The charge applies to "existing installations, at existing locations, for existing customers":

Urban Mileage Charge, per line	USOC XUDV3	Monthly Rate (NR)
(AT)		\$3.45

FILED

JAN 21 1993

Issued: DEC 07 1992

Effective: ~~JAN 21 1993~~ MO. PUBLIC SERVICE COMM.  
JAN 21 1993

By A. D. ROBERTSON, Assistant Vice President-External Affairs  
Southwestern Bell Telephone Company  
St. Louis, Missouri

**P.S.C. Mo. - No. 17**  
**LOCAL EXCHANGE - MISSOURI PORTION TARIFF**

Southwestern Bell Telephone  
Company d/b/a AT&T Missouri

Section 3  
13th Revised Sheet 1.1  
Replacing 12th Revised Sheet 1.1

**MISSOURI PORTION - FORT SCOTT, KANSAS EXCHANGE**

**2. RATES (cont'd)**

- C. The following urban mileage charge applies to those customers provided exchange service located outside the base rate area:

	<u>Current Rates (1)(2)</u>		
	<u>USOC</u>	<u>Monthly Rate</u>	
Urban Mileage Charge, per line	1LS1H	\$1.94	(CR)

- D. The following urban mileage charge applies to former two-party customers who were located two miles beyond the Suburban Service Area boundary prior to the conversion of the exchange to one-party service. The charge applies to "existing installations, at existing locations, for existing customers":

	<u>Current Rates (1)(2)</u>		
	<u>USOC</u>	<u>Monthly Rate</u>	
Urban Mileage Charge, per line	XUDV3	\$3.26	

- (1) For the period of November 26, 2008 through November 25, 2012, prices for residence basic local service in this exchange will be governed by Section 392.245.5(7) RSMo.  
(2) For the period of November 26, 2008 through November 25, 2012, prices for business basic local service in this exchange will be governed by Section 392.245.5(7) RSMo.

Issued: August 2, 2013

Effective: August 3, 2013

CANCELLED  
May 1, 2014  
Missouri Public  
Service Commission  
JI-2014-0379

By JOHN SONDAG, President - Missouri  
St. Louis, Missouri

FILED  
Missouri Public  
Service Commission  
JI-2014-0053

**P.S.C. Mo. - No. 17**  
**LOCAL EXCHANGE - MISSOURI PORTION TARIFF**

Southwestern Bell Telephone  
Company d/b/a AT&T Missouri

Section 3  
12th Revised Sheet 1.1  
Replacing 11th Revised Sheet 1.1

---

11th Revised Sheet 1.1 was previously 11th Revised Sheet 1.01 (AT)

**MISSOURI PORTION - FORT SCOTT, KANSAS EXCHANGE** (AT)

**2. RATES (cont'd)**

- C. The following urban mileage charge applies to those customers provided exchange service located outside the base rate area:

	Current Rates (1)(2)		(AT)
	<u>USOC</u>	<u>Monthly Rate</u>	
Urban Mileage Charge, per line	1LS1H	\$4.36	

- D. The following urban mileage charge applies to former two-party customers who were located two miles beyond the Suburban Service Area boundary prior to the conversion of the exchange to one-party service. The charge applies to "existing installations, at existing locations, for existing customers":

	Current Rates (1)(2)		(AT)
	<u>USOC</u>	<u>Monthly Rate</u>	
Urban Mileage Charge, per line	XUDV3	\$3.26	

- (1) For the period of November 26, 2008 through November 25, 2012, prices for residence basic local service in this exchange will be governed by Section 392.245.5(7) RSMo. (AT)
- (2) For the period of November 26, 2008 through November 25, 2012, prices for business basic local service in this exchange will be governed by Section 392.245.5(7) RSMo. (AT)

---

Issued: July 2, 2009

Effective: July 12, 2009

**CANCELED**  
August 3, 2013  
Missouri Public  
Service Commission  
JI-2014-0053

By DAVID NICHOLS, President - Missouri  
St. Louis, Missouri

Filed  
Missouri Public  
Service Commission  
JI-2010-0004

(RT) No Supplement to this  
tariff will be issued  
except for the purpose  
of canceling this tariff.

LOCAL EXCHANGE TARIFF

II. RATES (cont'd)

- C. The following urban mileage charge applies to those customers provided exchange service located outside the base rate area:

	Current Rates(1)	
	<u>USOC</u>	<u>Monthly Rate</u>
Urban Mileage Charge, per line	1LS1H	\$4.36(CR)

- D. The following urban mileage charge applies to former two-party customers who were located two miles beyond the Suburban Service Area boundary prior to the conversion of the exchange to one-party service. The charge applies to "existing installations, at existing locations, for existing customers":

	Current Rates(1)	
	<u>USOC</u>	<u>Monthly Rate</u>
Urban Mileage Charge, per line	XUDV3	\$3.26(CR)

(1) See Sheet 1.02 for maximum allowable rates.

Issued: October 17, 2005

Effective: December 1, 2005

By CINDY BRINKLEY, President-Missouri  
Southwestern Bell Telephone, L.P., d/b/a Southwestern Bell Telephone  
St. Louis, Missouri



No Supplement to this tariff will be issued except for the purpose of canceling this tariff.

Missouri Portion-  
Fort Scott, Kansas, Exchange  
10th Revised Sheet 1.01  
Replacing 9th Revised Sheet 1.01

SOUTHWESTERN BELL TELEPHONE COMPANY  
LOCAL EXCHANGE TARIFF

II. RATES (cont'd)

C. The following urban mileage charge applies to those customers provided exchange service located outside the base rate area:

	Current Rates(1)	
	USOC	Monthly Rate
Urban Mileage Charge, per line	1LS1H	\$4.45(CR)

D. The following urban mileage charge applies to former two-party customers who were located two miles beyond the Suburban Service Area boundary prior to the conversion of the exchange to one-party service. The charge applies to "existing installations, at existing locations, for existing customers:"

	Current Rates(1)	
	USOC	Monthly Rate
Urban Mileage Charge, per line	XUDV3	\$3.33(CR)

**CANCELLED**

DEC 01 2005

By *11/18/05 RS 1.01*  
**Public Service Commission**  
**MISSOURI**

(1) See Sheet 1.02 for maximum allowable rates.

Issued: October 15, 2004

Effective: December 1, 2004

By CINDY BRINKLEY, President-Missouri  
Southwestern Bell Telephone, L.P., d/b/a Southwestern Bell Telephone Company  
St. Louis, Missouri

**FILED**  
**MO PSC**

No Supplement to this tariff will be issued except for the purpose of canceling this tariff.

Missouri Portion-  
Fort Scott, Kansas, Exchange  
9th Revised Sheet 1.01  
Replacing 8th Revised Sheet 1.01

SOUTHWESTERN BELL TELEPHONE COMPANY  
LOCAL EXCHANGE TARIFF

Missouri Public  
Service Commission

REC'D OCT 15 2002

(MT) II. RATES (cont'd)

C. The following urban mileage charge applies to those customers provided exchange service located outside the base rate area:

	Current Rates(1)	
	<u>USOC</u>	<u>Monthly Rate</u>
Urban Mileage Charge, per line	ILS1H	\$4.57(CR)

D. The following urban mileage charge applies to former two-party customers who were located two miles beyond the Suburban Service Area boundary prior to the conversion of the exchange to one-party service. The charge applies to "existing installations, at existing locations, for existing customers:"

	Current Rates(1)	
	<u>USOC</u>	<u>Monthly Rate</u>
Urban Mileage Charge, per line	XUDV3	\$3.42(CR)

**CANCELLED**

DEC 01 2004  
By JAWRS 1.01  
Public Service Commission  
MISSOURI

Missouri Public  
Service Commission

**FILED DEC 01 2002**

(MT) (1) See Sheet 1.02 for maximum allowable rates.

Issued: October 15, 2002

Effective: December 1, 2002

By CINDY BRINKLEY, President-Missouri  
Southwestern Bell Telephone, L.P., d/b/a Southwestern Bell Telephone Company  
St. Louis, Missouri

No supplement to this tariff will be issued except for the purpose of canceling this tariff.

MISSOURI PORTION-FORT SCOTT, KANSAS, EXCHANGE  
8th Revised Sheet 1.01  
Replacing 7th Revised Sheet 1.01

Missouri Public

SOUTHWESTERN BELL TELEPHONE COMPANY  
LOCAL EXCHANGE TARIFF

REC'D OCT 01 2001

MAXIMUM <sup>Service</sup> ~~Commission~~ <sup>rates</sup>

1. Flat Rate Service

Business

Residence

One-Party

\$18.24 (CR)

\$9.89 (CR)

MAXIMUM <sup>rates</sup>

Urban Mileage Charge, per line

USOC  
1LS1H

Monthly Rate  
\$4.53 (CR)

MAXIMUM <sup>rates</sup>

Urban Mileage Charge, per line

USOC  
XUDV3

Monthly Rate  
\$3.39 (CR)

**CANCELLED**

DEC 01 2002

941RS 1.01  
Missouri Public Service Commission  
MISSOURI

Issued: October 1, 2001

Effective: December 1, 2001

By JAN NEWTON, President-Missouri  
Southwestern Bell Telephone Company  
St. Louis, Missouri

Missouri Public

FILED DEC 01 2001

Service Commission



No supplement to this tariff will be issued except for the purpose of canceling this tariff.

MISSOURI PORTION-FORT SCOTT, KANSAS, EXCHANGE  
7th Revised Sheet 1.01  
Replacing 6th Revised Sheet 1.01

SOUTHWESTERN BELL TELEPHONE COMPANY  
LOCAL EXCHANGE TARIFF

Missouri Public  
Service Commission

REC'D OCT 02 2000

MAXIMUM RATES

1. Flat Rate Service	<u>Business</u>	<u>Residence</u>
One-Party	\$18.38	\$9.96

MAXIMUM RATES

Urban Mileage Charge, per line	<u>USOC</u> ILSIH	<u>Monthly Rate</u> \$4.56
--------------------------------	----------------------	-------------------------------

MAXIMUM RATES

Urban Mileage Charge, per line	<u>USOC</u> XUDV3	<u>Monthly Rate</u> \$3.42
--------------------------------	----------------------	-------------------------------

CANCELLED

DEC 01 2000  
842RS1.01  
Public Service Commission  
MISSOURI

Missouri Public  
Service Commission

FILED DEC 01 2000

Issued: October 2, 2000

Effective: December 1, 2000

By JAN NEWTON, President-Missouri  
Southwestern Bell Telephone Company  
St. Louis, Missouri

No supplement to this tariff will be issued except for the purpose of canceling this tariff.

MISSOURI PORTION-FORT SCOTT, KANSAS, EXCHANGE  
6th Revised Sheet 1.01  
Replacing 5th Revised Sheet 1.01

SOUTHWESTERN BELL TELEPHONE COMPANY  
LOCAL EXCHANGE TARIFF

RECEIVED

DEC 4 1992

MO. PUBLIC SERVICE COMM.

II. RATES-(Continued)

RT)

T)

CANCELLED

DEC 01 2000

By *Jm Qs 1.01*  
Public Service Commission,  
MISSOURI

FILED

JAN 21 1993

~~MO. PUBLIC SERVICE COMM.~~

Issued: DEC 07 1992

Effective: ~~JAN 07 1993~~  
JAN 21 1993

By A. D. ROBERTSON, Assistant Vice President-External Affairs  
Southwestern Bell Telephone Company  
St. Louis, Missouri

P.S.C. Mo. - No. 17  
LOCAL EXCHANGE - MISSOURI PORTION TARIFF

Southwestern Bell Telephone  
Company d/b/a AT&T Missouri

Section 3  
8th Revised Sheet 1.2  
Replacing 7th Revised Sheet 1.2

---

7th Revised Sheet 1.2 was previously 7th Revised Sheet 1.02 (AT)

(RT)

(RT)

---

Issued: July 2, 2009

By DAVID NICHOLS, President - Missouri  
St. Louis, Missouri

Effective: July 12, 2009

CANCELLED  
May 1, 2014  
Missouri Public  
Service Commission  
JI-2014-0379

Filed  
Missouri Public  
Service Commission  
JI-2010-0004

P.S.C. Mo. - No. 17

Missouri Portion-

Southwestern Bell Telephone  
Company d/b/a AT&T Missouri

Fort Scott, Kansas Exchange  
7th Revised Sheet 1.02  
Replacing 6th Revised Sheet 1.02

LOCAL EXCHANGE TARIFF

II. RATES (cont'd)

		Maximum Rates	
		Business	Residence
1.	Flat Rate Service		
	One-Party Lifeline	\$17.95(CR) N/A	\$9.72(CR) (1)
		USOC	Monthly Rate
	Urban Mileage Charge, per line	1LS1H	\$4.46(CR)
		USOC	Monthly Rate
	Urban Mileage Charge, per line	XUDV3	\$3.33(CR)

(1) A customer eligible under established criteria can receive a discount from his or her bill for residential essential local telecommunications services, in accordance with P.S.C. Mo. – No. 24, Local Exchange Tariff, Section 1.2.2.E, regarding Lifeline Service.

Issued: December 31, 2007

Effective: February 16, 2008

By CINDY BRINKLEY, President – Missouri  
St. Louis, Missouri

Cancelled  
July 12, 2009  
Missouri Public  
Service Commission  
JI-2010-0004

FILED  
Missouri Public  
Service Commission

P.S.C. Mo. - No. 17  
Missouri Portion-

Southwestern Bell Telephone, L.P.  
d/b/a AT&T Missouri

Fort Scott, Kansas Exchange  
6th Revised Sheet 1.02  
Replacing 5th Revised Sheet 1.02

LOCAL EXCHANGE TARIFF

---

II. RATES (cont'd)

	Maximum Rates	
	<u>Business</u>	<u>Residence</u>
1. Flat Rate Service		
One-Party Lifeline	\$17.60(CR) N/A	\$9.53(CR) (1)
	<u>USOC</u>	<u>Monthly Rate</u>
Urban Mileage Charge, per line	1LS1H	\$4.36
	<u>USOC</u>	<u>Monthly Rate</u>
Urban Mileage Charge, per line	XUDV3	\$3.26

(1) A customer eligible under established criteria can receive a discount from his or her bill for residential essential local telecommunications services, in accordance with P.S.C. Mo. – No. 24, Local Exchange Tariff, Section 1.2.2.E, regarding Lifeline Service.

---

Issued: October 17, 2006

Effective: December 1, 2006

By CINDY BRINKLEY, President – Missouri  
St. Louis, Missouri

CANCELLED  
February 16, 2008  
Missouri Public  
Service Commission

**Filed**  
Missouri Public  
Service Commission

No Supplement to this tariff will be issued except for the purpose of canceling this tariff.

Missouri Portion-  
Fort Scott, Kansas Exchange  
5th Revised Sheet 1.02  
Replacing 4th Revised Sheet 1.02

LOCAL EXCHANGE TARIFF

II. RATES (cont'd)

		<u>Maximum Rates</u>	
		<u>Business</u>	<u>Residence</u>
1.	Flat Rate Service		
	One-Party Lifeline	\$17.56(CR) N/A	\$9.51(CR) (1)
		<u>USOC</u>	<u>Monthly Rate</u>
	Urban Mileage Charge, per line	1LS1H	\$4.36(CR)
		<u>USOC</u>	<u>Monthly Rate</u>
	Urban Mileage Charge, per line	XUDV3	\$3.26(CR)

(1) A customer eligible under established criteria can receive a discount from his or her bill for residential essential local telecommunications services, in accordance with P.S.C. Mo. – No. 24, Local Exchange Tariff, Section 1.2.2.E, regarding Lifeline Service.

Issued: October 17, 2005

Effective: December 1, 2005

By CINDY BRINKLEY, President-SBC Missouri  
Southwestern Bell Telephone, L.P., d/b/a SBC Missouri  
St. Louis, Missouri

**Cancelled**

December 1, 2006

Missouri Public  
Service Commission

**Filed**

Missouri Public  
Service Commission

No Supplement to this tariff will be issued except for the purpose of canceling this tariff.

Missouri Portion-  
Fort Scott, Kansas Exchange  
4th Revised Sheet 1.02  
Replacing 3rd Revised Sheet 1.02

(RT)

LOCAL EXCHANGE TARIFF

II. RATES (cont'd)

		Maximum Rates	
		<u>Business</u>	<u>Residence</u>
(CT)(CR)	1. Flat Rate Service		
	One-Party Lifeline	\$17.91 N/A	\$9.70 (1)
		<u>USOC</u>	<u>Monthly Rate</u>
	Urban Mileage Charge, per line	1LS1H	\$4.45
		<u>USOC</u>	<u>Monthly Rate</u>
	Urban Mileage Charge, per line	XUDV3	\$3.33

**CANCELLED**

DEC 01 2005

By *547 RG 1.02*  
Public Service Commission  
MISSOURI

- (AT) (1) A customer eligible under established criteria can receive a discount from his or her bill for residential essential local telecommunications services, in accordance with P.S.C. Mo. – No. 24, Local Exchange Tariff, Section 1.2.2.E, regarding Lifeline Service.

Issued: April 1, 2005

Effective: May 1, 2005

By CINDY BRINKLEY, President-SBC Missouri  
Southwestern Bell Telephone, L.P., d/b/a SBC Missouri  
St. Louis, Missouri

TO-1998-0329

**FILED  
MO PSC**



No Supplement to this tariff will be issued except for the purpose of canceling this tariff.

Missouri Portion-  
Fort Scott, Kansas, Exchange  
3rd Revised Sheet 1.02  
Replacing 2nd Revised Sheet 1.02

SOUTHWESTERN BELL TELEPHONE COMPANY  
LOCAL EXCHANGE TARIFF

II. RATES (cont'd)

	Maximum Rates	
	<u>Business</u>	<u>Residence</u>
1. Flat Rate Service		
One-Party Lifeline(1)	\$17.91(CR) N/A	\$9.70(CR) 6.20(CR)
	<u>USOC</u>	<u>Monthly Rate</u>
Urban Mileage Charge, per line	1LS1H	\$4.45(CR)
	<u>USOC</u>	<u>Monthly Rate</u>
Urban Mileage Charge, per line	XUDV3	\$3.33(CR)

**CANCELLED**

MAY 01 2005  
By 44hRS 1.02  
Public Service Commission  
MISSOURI

(1) See P.S.C. Mo. – No. 24, Local Exchange Tariff, Section 1.2.2.E, for description, terms and conditions related to Lifeline Service.

Issued: October 15, 2004

Effective: December 1, 2004

By CINDY BRINKLEY, President-SBC Missouri  
Southwestern Bell Telephone, L.P., d/b/a SBC Missouri  
St. Louis, Missouri

**FILED  
MO PSC**

No Supplement to this tariff will be issued except for the purpose of canceling this tariff.

Missouri Portion-  
Fort Scott, Kansas, Exchange  
2nd Revised Sheet 1.02  
Replacing 1st Revised Sheet 1.02  
Missouri Public

SOUTHWESTERN BELL TELEPHONE COMPANY Service Commission  
LOCAL EXCHANGE TARIFF

REC'D MAY 10 2004

II. RATES (cont'd)

		Maximum Rates	
		Business	Residence
(AT)	1. Flat Rate Service		
	One-Party Lifeline(1)	\$18.40 N/A	\$9.97 6.47
		<u>USOC</u>	<u>Monthly Rate</u>
	Urban Mileage Charge, per line	1LS1H	\$4.57
		<u>USOC</u>	<u>Monthly Rate</u>
	Urban Mileage Charge, per line	XUDV3	\$3.42

**CANCELLED**

DEC 01 2004  
By *3rd RSl.02*  
Public Service Commission  
MISSOURI

(AT) (1) See P.S.C. Mo. – No. 24, Local Exchange Tariff, Section 1.2.2.E, for description, terms and conditions related to Lifeline Service.

Issued: May 10, 2004 Effective: June 9, 2004

By CINDY BRINKLEY, President-SBC Missouri  
Southwestern Bell Telephone, L.P., d/b/a SBC Missouri  
St. Louis, Missouri Missouri Public  
Service Commission

FILED JUN 09 2004

P.S.C. Mo.- No. 17

No Supplement to this tariff will be issued except for the purpose of canceling this tariff.

Missouri Portion-  
Fort Scott, Kansas, Exchange  
1st Revised Sheet 1.02  
Replacing Original Revised Sheet 1.02

SOUTHWESTERN BELL TELEPHONE COMPANY  
LOCAL EXCHANGE TARIFF

Missouri Public

REC'D OCT 15 2003

II. RATES (cont'd)

	Maximum Rates		Commission
	Business	Residence	
1. Flat Rate Service			
One-Party	\$18.40(CR)	\$9.97	
	<u>USOC</u>	<u>Monthly Rate</u>	
Urban Mileage Charge, per line	1LS1H	\$4.57	
	<u>USOC</u>	<u>Monthly Rate</u>	
Urban Mileage Charge, per line	XUDV3	\$3.42	

**CANCELLED**

JUN 09 2004  
By *Cindy Brinkley*  
Public Service Commission  
MISSOURI

Issued: October 15, 2003

Effective: December 1, 2003

By CINDY BRINKLEY, President-SBC Missouri  
Southwestern Bell Telephone, L.P., d/b/a SBC Missouri  
St. Louis, Missouri

Missouri Public  
Service Commission

FILED DEC 01 2003

No Supplement to this tariff will be issued except for the purpose of canceling this tariff.

Missouri Portion-  
Fort Scott, Kansas, Exchange  
Original Sheet 1.02

SOUTHWESTERN BELL TELEPHONE COMPANY  
LOCAL EXCHANGE TARIFF

Missouri Public  
Service Commission

REC'D OCT 15 2002

(MT) II. RATES (cont'd)

		Maximum Rates	
		<u>Business</u>	<u>Residence</u>
1.	Flat Rate Service		
	One-Party	\$18.41(CR)	\$9.97(CR)
		<u>USOC</u>	<u>Monthly Rate</u>
	Urban Mileage Charge, per line	ILS1H	\$4.57(CR)
		<u>USOC</u>	<u>Monthly Rate</u>
(MT)	Urban Mileage Charge, per line	XUDV3	\$3.42(CR)

CANCELLED

DEC 01 2003  
15 + \$1.02  
Missouri Public Service Commission  
MISSOURI

Missouri Public  
Service Commission

FILED DEC 01 2002

Issued: October 15, 2002

Effective: December 1, 2002

By CINDY BRINKLEY, President-Missouri  
Southwestern Bell Telephone, L.P., d/b/a Southwestern Bell Telephone Company  
St. Louis, Missouri

SBC Missouri  
Base Rate Area Map  
Fulton  
PSC MO No. 17  
3<sup>rd</sup> Revised Sheet 2

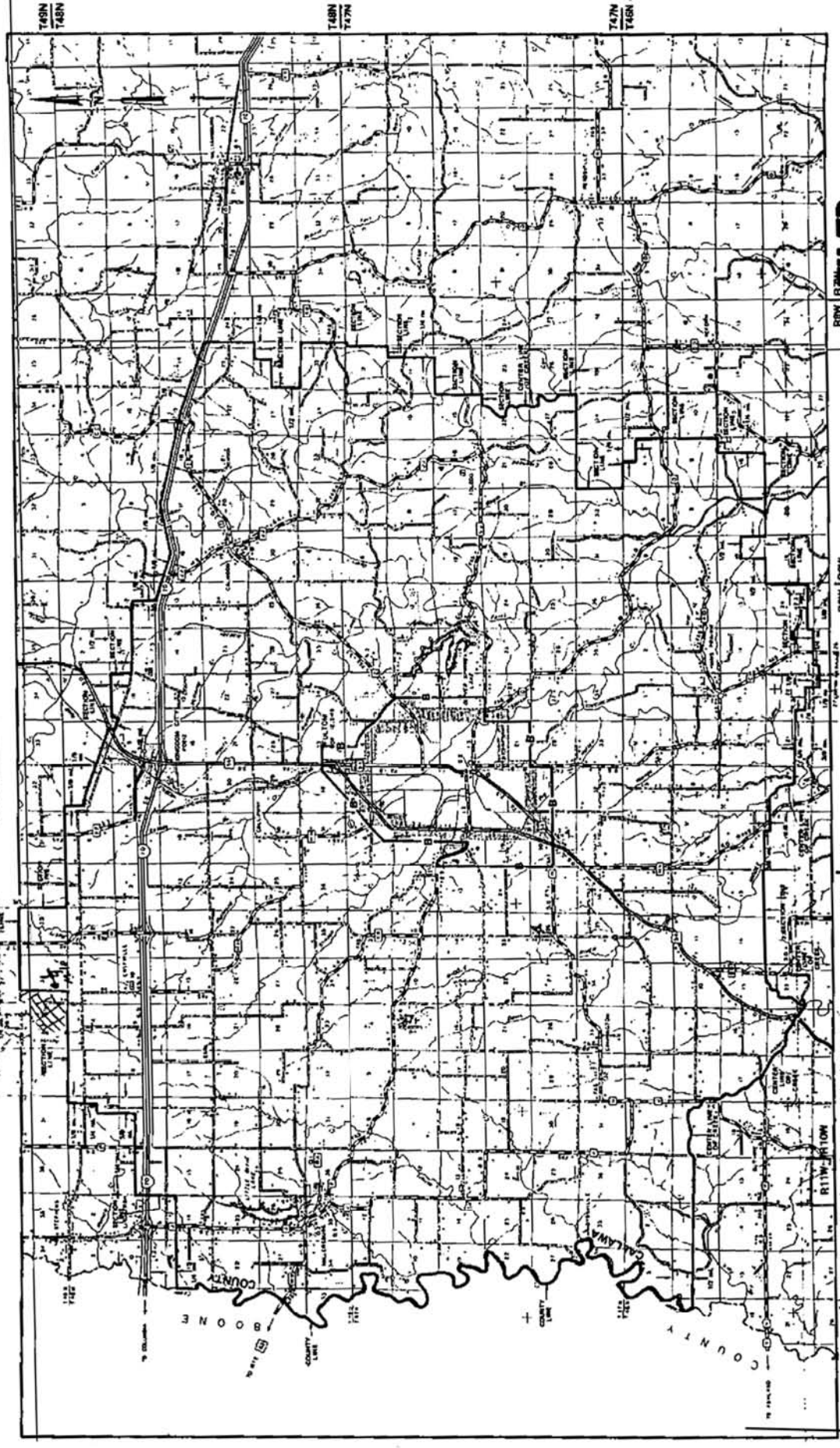
# Non-Scannable Map

(Viewable in the Data Center  
located at:  
200 Madison Street, 1<sup>st</sup> Floor  
Jefferson City MO)

Fulton, Missouri  
7 1/2" REVISED SHEET 3  
ICING, R. 3 REVISED SHEET 3

P. S. C. Mo. No. 17  
EXCHANGE AREA MAP

NO SUPPLEMENT TO THIS TARIFF WILL  
BE ISSUED EXCEPT FOR THE PURPOSE OF  
CANCELLING THIS TARIFF.



FILED  
Effective: 5-1-05  
MO PSC 05-14-2005

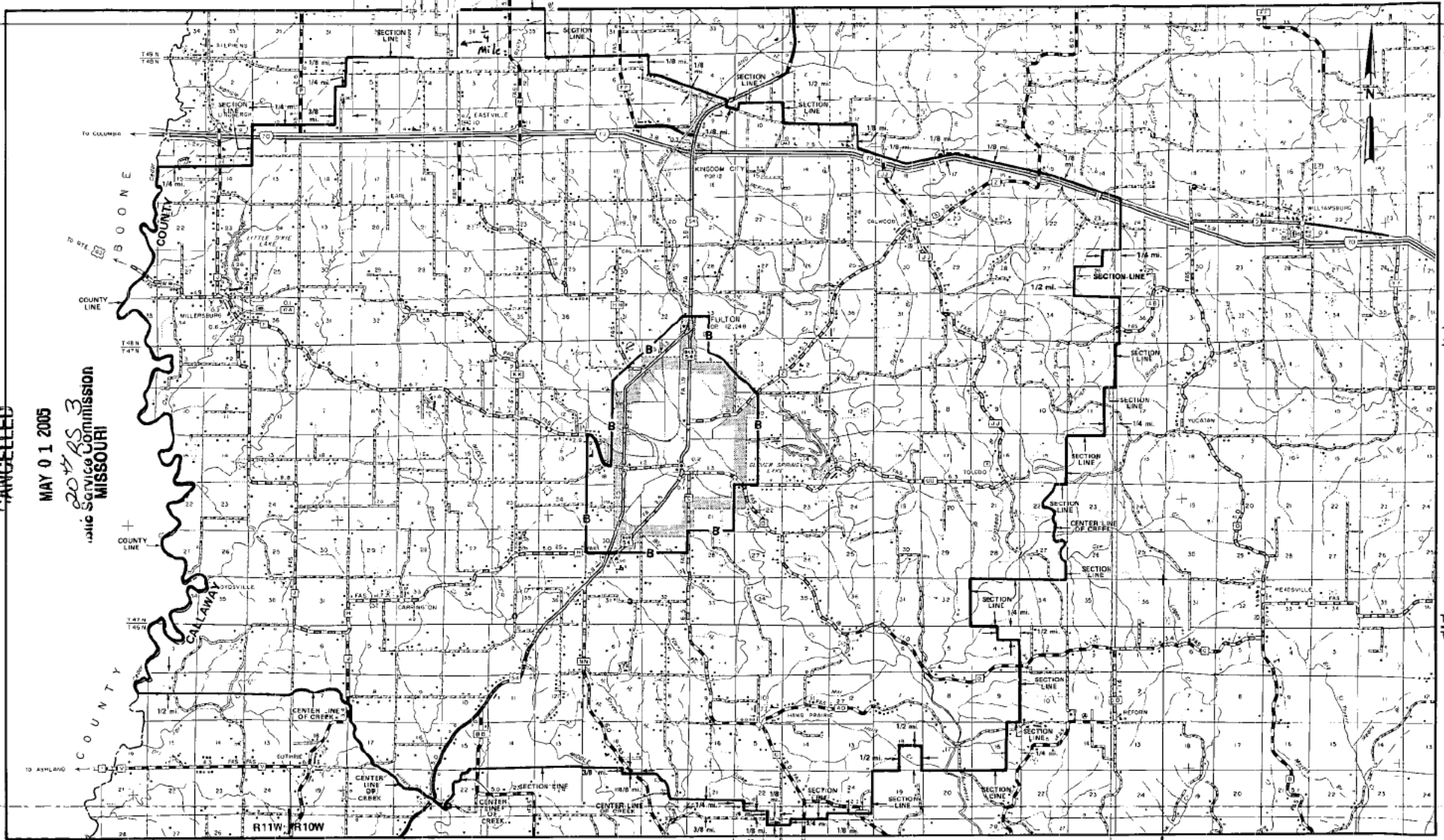
Cindy Bralley, President SBC Missouri  
Southwestern Bell Telephone, L.P. d/b/a SBC Missouri  
St. Louis, Missouri

Issued: 4-1-05

NO SUPPLEMENT TO THIS TARIFF WILL BE ISSUED EXCEPT FOR THE PURPOSE OF CANCELING THIS TARIFF.

### P. S. C. Mo. No. 17 EXCHANGE AREA MAP

**Fulton, Missouri**  
19th REVISED SHEET 3  
REPLACING 18th REVISED SHEET 3



CANCELLED  
 MAY 01 2005  
 PUBLIC SERVICE COMMISSION  
 MISSOURI

By PRISCILLA HILL-ARDOIN, President - Missouri  
Southwestern Bell Telephone Company  
St. Louis, Missouri

R10W | R9W

R9W | R8W

R8W | R7W

Issued: December 24, 1997

Effective: March 6, 1998



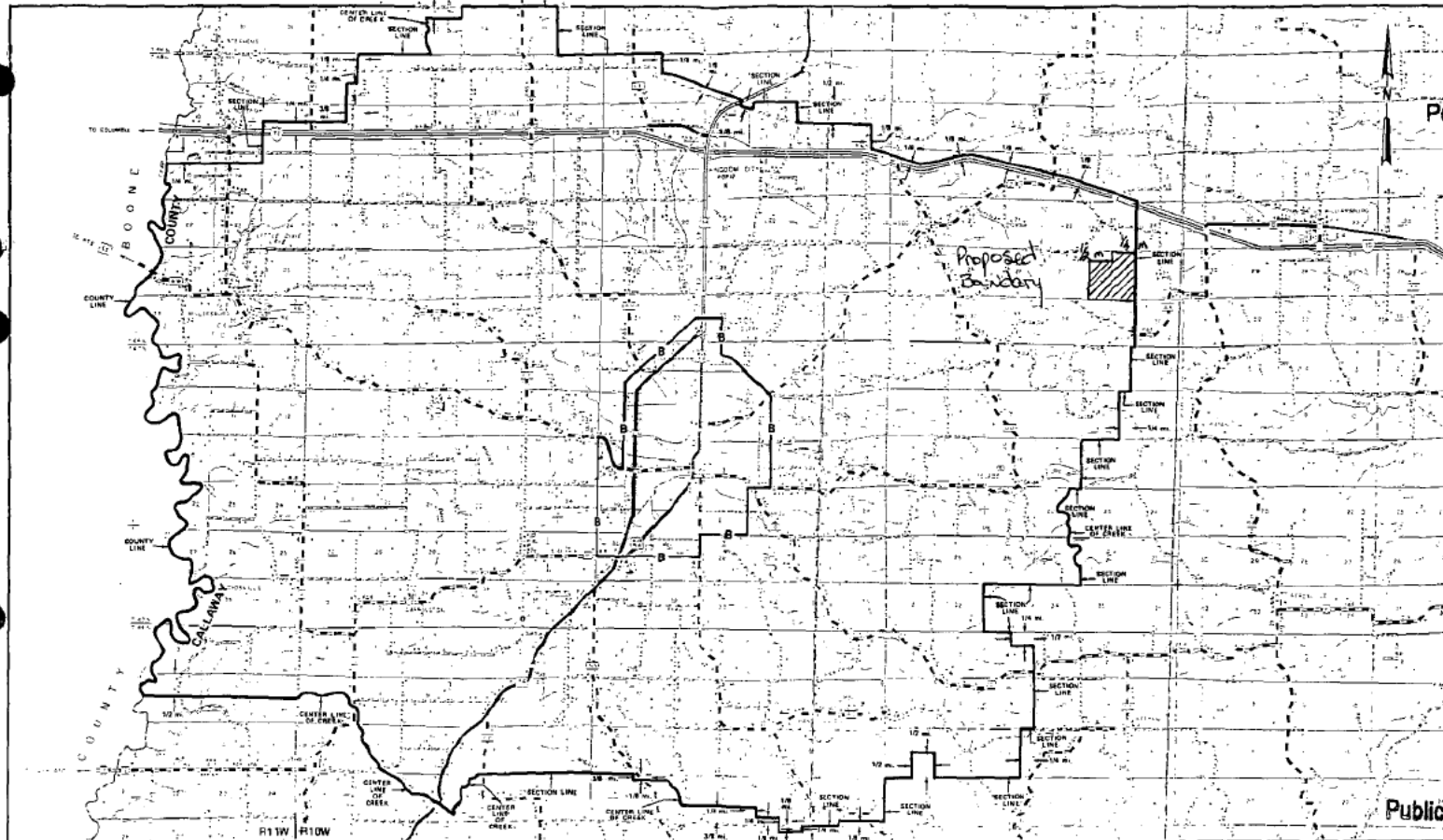
NO SUPPLEMENT TO THIS TARIFF WILL BE ISSUED EXCEPT FOR THE PURPOSE OF CANCELING THIS TARIFF.

P. S. C. Mo. No. 17  
EXCHANGE AREA MAP

Fulton, Missouri  
19 REVISED SHEET 3  
REPLACING 18 REVISED SHEET 3

**RECEIVED**

T49N  
T48N  
DEC 24 1997  
MISSOURI  
Public Service Commission



T48N  
T47N  
**CANCELLED**  
MAY 01 2005  
by *204 25 3*  
Public Service Commission  
MISSOURI

T47N  
T46N  
**FILED**  
MAR 06 1998  
MISSOURI  
Public Service Commission

ISSUED: DEC 06 1997  
M. H. SCHULTEIS, Division Manager, Regulatory & Industry Relations  
Southwestern Bell Telephone Company  
St. Louis, Missouri

R10W | R9W  
*Priscilla Hill-Ardem*

R9W | R8W

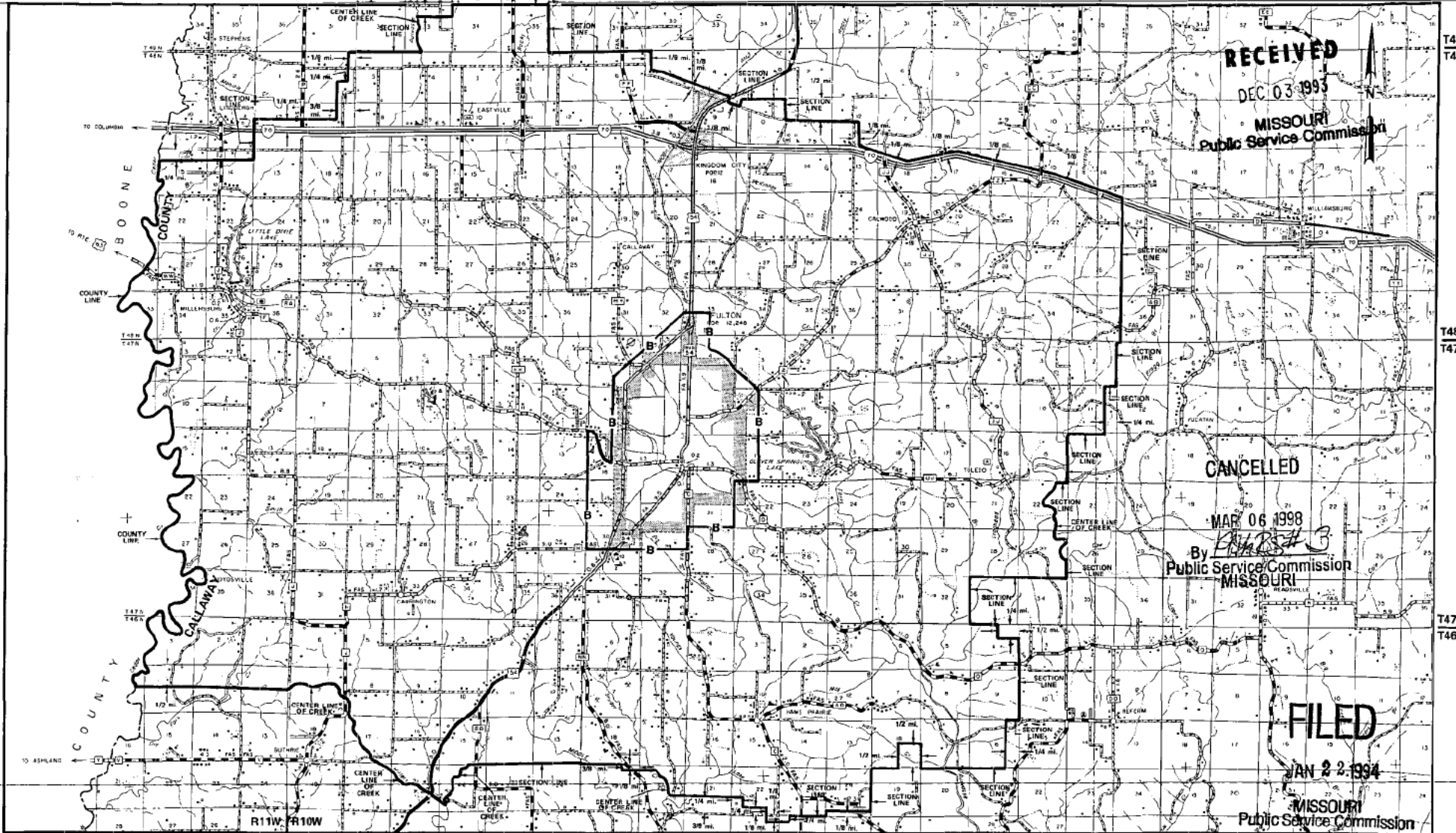
R8W | R7W

Effective: ~~DEC 06 1997~~  
MAR 06 1998

NO SUPPLEMENT TO THIS TARIFF WILL BE ISSUED EXCEPT FOR THE PURPOSE OF CANCELING THIS TARIFF.

P. S. C. Mo. No. 17  
**EXCHANGE AREA MAP**

**Fulton, Missouri**  
18th REVISED SHEET 3  
REPLACING 17th REVISED SHEET 3



**RECEIVED**  
DEC 03 1993  
MISSOURI  
Public Service Commission

**CANCELLED**  
MAR 06 1998  
By *[Signature]*  
Public Service Commission  
MISSOURI

**FILED**  
JAN 22 1994  
MISSOURI  
Public Service Commission

By M. H. SCHULTEIS, Division Manager-Regulatory & Industry Relations  
Southwestern Bell Telephone Company  
St. Louis, Missouri

R10W | R9W

R9W | R8W

R8W | R7W

issued: \_\_\_\_\_

Effective: **JAN 22 1994**

SBC Missouri  
Exchange Area Map  
Fredericktown  
PSC MO No. 17  
17<sup>th</sup> Revised Sheet 3

# Non-Scannable Map

(Viewable in the Data Center  
located at:  
200 Madison Street, 1<sup>st</sup> Floor  
Jefferson City MO)