

**ORCHARD FARM TELEPHONE COMPANY
d/b/a MISSOURICOM**

**PSC Mo. No. 7
Second Revised Sheet - Adoption Notice
Replaces First Revised Sheet – Adoption Notice**

ADOPTION NOTICE

GENERAL AND LOCAL EXCHANGE TARIFF

Orchard Farm Telephone Company d/b/a Missouriicom hereby adopts, ratifies, and makes its own in every respect, as if the same had been originally filed by it, all tariffs of Orchard Farm Telephone Company filed with and approved by the Missouri Public Service Commission before the effective date of this tariff.

(T)
|
(T)

This tariff contains the descriptions, regulations, and rates applicable to the furnishing of service and facilities for telecommunications services provided by Orchard Farm Telephone Company d/b/a Missouriicom within the State of Missouri. This tariff is on file with the Missouri Public Service Commission and copies may be inspected during normal business hours, at the Company's principal place of business.

(T)

CANCELLED - Missouri Public Service Commission - 10/31/2022 - TN-2023-0140 - YI-2023-0074

Issued: August 23, 2018

Issued by: Garrin Bott, President
101 Main Street, P.O. Box 175
New Florence, MO 63363-0175

Effective: September 2, 2018

FILED
Missouri Public
Service Commission
IN-2019-0055, JI-2019-0021

ADOPTION NOTICE

(T)

(D)

(D)

This tariff contains the descriptions, regulations, and rates applicable to the furnishing of service and facilities for telecommunications services provided by Orchard Farm Telephone Company within the State of Missouri. This tariff is on file with the Missouri Public Service Commission and copies may be inspected during normal business hours, at the Company's place of business.

(T)

ISSUED: September 29, 2014

EFFECTIVE: November 21, 2014

By: Garrin Bott, President

**P.S.C. MO. No. 6
Cancels P.S.C. MO No. 5**

ORCHARD FARM TELEPHONE COMPANY
d/b/a TDS TELECOM
Missouri

PSC MO No. 6
Original Sheet – Adoption Notice

TITLE PAGE

Orchard Farm Telephone Company d/b/a TDS Telecom hereby adopts, ratifies and makes its own in every respect, as if the same had been originally filed by it, all tariffs of Orchard Farm Telephone Company filed with and approved by the Missouri Public Service Commission before the effective date of this tariff.

This tariff contains the descriptions, regulations, and rates applicable to the furnishing of service and facilities for telecommunications services provided by Orchard Farm Telephone Company d/b/a TDS Telecom within the State of Missouri. This tariff is on file with the Missouri Public Service Commission and copies may be inspected during normal business hours, at the Company's place of business.

(N)

(N)

FILED
Missouri Public
Service Commission
IN-2014-0050; JI-2014-0093

ISSUED: August 22, 2013

EFFECTIVE: September 1, 2013

CANCELLED BY: Joel Dohmeier, Vice-President
November 21, 2014
Missouri Public
Service Commission
IN-2015-0079; JI-2015-0129

P.S.C. MO. No. 7

**ORCHARD FARM TELEPHONE COMPANY
d/b/a MISSOURICOM**

(T)

SECOND AMENDED TITLE PAGE
REPLACES FIRST AMENDED TITLE PAGE

(T)

(T)

ORCHARD FARM TELEPHONE COMPANY
d/b/a MISSOURICOM

(T)

SCHEDULE OF RATES
FOR
TELEPHONE SERVICE
APPLYING TO THE FOLLOWING TERRITORIES
ORCHARD FARM, MISSOURI

Issued: August 23, 2018

Effective: September 2, 2018

Issued by: Garrin Bott, President
101 Main Street, P.O. Box 175
New Florence, MO 63363-0175

FILED
Missouri Public
Service Commission
IN-2019-0055, JI-2019-0021

CANCELLED - Missouri Public Service Commission - 10/31/2022 - TN-2023-0140 - YI-2023-0074

P.S.C. MO. No. 7
Cancels P.S.C. MO. No. 6

ORCHARD FARM TELEPHONE COMPANY
Missouri

(T)

FIRST AMENDED TITLE PAGE
REPLACES ORIGINAL TITLE PAGE

ORCHARD FARM TELEPHONE COMPANY

(T)

SCHEDULE OF RATES
FOR
TELEPHONE SERVICE
APPLYING TO THE FOLLOWING TERRITORIES
ORCHARD FARM, MISSOURI

ISSUED: September 29, 2014

EFFECTIVE: November 21, 2014

By: Garrin Bott, President

CANCELLED
September 2, 2018
Missouri Public
Service Commission
IN-2019-0055, JI-2019-0021

FILED
Missouri Public
Service Commission
IN-2015-0079; JI-2015-0129

P.S.C. MO. No. 6
Cancels P.S.C. MO No. 5

ORCHARD FARM TELEPHONE COMPANY
d/b/a TDS TELECOM
Missouri

(N)

TITLE PAGE

ORCHARD FARM TELEPHONE COMPANY D/B/A TDS TELECOM

(N)

SCHEDULE OF RATES
FOR
TELEPHONE SERVICE
APPLYING TO THE FOLLOWING TERRITORIES
ORCHARD FARM, MISSOURI

FILED
Missouri Public
Service Commission
IN-2014-0050; JI-2014-0093

ISSUED: August 22, 2013

EFFECTIVE: September 1, 2013

CANCELLED BY: Joel Dohmeier, Vice-President
November 21, 2014
Missouri Public
Service Commission
IN-2015-0079; JI-2015-0129

Attachment B

**P.S.C. MO. No. 6
Cancels P.S.C. MO No. 5**

ORCHARD FARM TELEPHONE COMPANY
Missouri

TITLE PAGE

ORCHARD FARM TELEPHONE COMPANY
Name of Corporation

**SCHEDULE OF RATES
FOR
TELEPHONE SERVICE
APPLYING TO THE FOLLOWING TERRITORIES
ORCHARD FARM, MISSOURI**

CANCELLED
September 1, 2013
Missouri Public
Service Commission
IN-2014-0050; JI-2014-0093

ISSUED: February 27, 2013

EFFECTIVE: March 29, 2013

BY: Joel Dohmeier, Vice-President

FILED
Missouri Public
Service Commission
JI-2013-0374

GENERAL EXCHANGE TARIFF

P.S.C. MO No. 6
ORCHARD FARM TELEPHONE COMPANY.
d/b/a TDS Telecom
Missouri

Section 1
Original Contents Sheet 1

TABLE OF CONTENTS

SECTION 1	Table of Contents, General Subject Index and Symbols
SECTION 2	General Rules and Regulations
SECTION 3	Definitions
SECTION 4	Local Exchange Service
SECTION 5	Miscellaneous Service Arrangements
SECTION 6	Service Connection Charges
SECTION 7	Directory Services
SECTION 8	Optional Services
SECTION 9	Construction Charges
SECTION 10	Private Line Service
SECTION 11	Access Service

CANCELLED - Missouri Public Service Commission - 10/31/2022 - TN-2023-0140 - YI-2023-0074

ISSUED: February 27, 2013

EFFECTIVE: March, 29, 2013

By: Joel Dohmeier, Vice-President

FILED
Missouri Public
Service Commission
JI-2013-0374

GENERAL EXCHANGE TARIFF

P.S.C. MO No. 6
ORCHARD FARM TELEPHONE COMPANY.
d/b/a TDS Telecom
Missouri

Section 2
Original Sheet 1

GENERAL REGULATIONS

CONCURRENCE

Orchard Farm Telephone Company. d/b/a TDS Telecom hereby assents to, adopts and concurs in the General Regulations as set forth in Section 2 of Stoutland Telephone Company, d/b/a TDS Telecom tariff, on file with the Missouri Public Service Commission and makes itself a party thereto and obligates itself to observe the provisions therein with the exceptions listed below.

EXCEPTIONS

No Exceptions

CANCELLED - Missouri Public Service Commission - 10/31/2022 - TN-2023-0140 - YI-2023-0074

ISSUED: February 27, 2013

EFFECTIVE: March 29, 2013

By: Joel Dohmeier, Vice-President

FILED
Missouri Public
Service Commission
JI-2013-0374

GENERAL EXCHANGE TARIFF

P.S.C. MO No. 6
ORCHARD FARM TELEPHONE COMPANY.
d/b/a TDS Telecom
Missouri

Section 3
Original Sheet 1

DEFINITIONS

CONCURRENCE

Orchard Farm Telephone Company. d/b/a TDS Telecom hereby assents to, adopts and concurs in the Definitions as set forth in Section 3 of Stoutland Telephone Company, d/b/a TDS Telecom tariff, on file with the Missouri Public Service Commission and makes itself a party thereto and obligates itself to observe the provisions therein with the exceptions listed below.

EXCEPTIONS

No Exceptions

CANCELLED - Missouri Public Service Commission - 10/31/2022 - TN-2023-0140 - YI-2023-0074

ISSUED: February 27, 2013

EFFECTIVE: March 29, 2013

By: Joel Dohmeier, Vice-President

FILED
Missouri Public
Service Commission
JI-2013-0374

GENERAL EXCHANGE TARIFF

**P.S.C. MO. No. 7
ORCHARD FARM TELEPHONE COMPANY
d/b/a MISSOURICOM**

**Section 4
Third Revised Sheet 1
Cancels Second Revised Sheet 1**

LOCAL EXCHANGE SERVICE

CONCURRENCE

Orchard Farm Telephone Company d/b/a Missouriicom hereby assents to, adopts and (T)
concurs in the Local Exchange Service as set forth in Section 4 of Stoutland Telephone (T)
Company d/b/a Missouriicom on file with the Missouri Public Service Commission and
makes itself a party thereto and obligates itself to observe the provisions therein with
the exceptions listed below.

EXCEPTIONS

BASIC ACCESS LINE SERVICE

Local rates for Residential and Business services are available
at the Company's website:

<https://missouricom.co/tariff-charges/>

(N)
|
(N)

GENERAL EXCHANGE TARIFF

P.S.C. MO No. 7
ORCHARD FARM TELEPHONE COMPANY
Missouri

Section 4
Second Revised Sheet 1
Replaces First Revised Sheet 1

LOCAL EXCHANGE SERVICE

CONCURRENCE

Orchard Farm Telephone Company hereby assents to, adopts and concurs in the Local Exchange Service as set forth in Section 4 of Stoutland Telephone Company on file with the Missouri Public Service Commission and makes itself a party thereto and obligates itself to observe the provisions therein with the exceptions listed below.

EXCEPTIONS

BASIC ACCESS LINE SERVICE

B. RATES

	<u>Access</u>
Business One-Party	\$25.40
Residence One-Party	\$18.00

(l)

ISSUED: April 29, 2016

EFFECTIVE: June 1, 2016

By: Garrin Bott, President

CANCELLED
January 1, 2022
Missouri Public
Service Commission
JI-2022-0158

FILED
Missouri Public
Service Commission
JI-2016-0306

GENERAL EXCHANGE TARIFF

P.S.C. MO No. 7
ORCHARD FARM TELEPHONE COMPANY
Missouri

Section 4
First Revised Sheet 1
Replaces Original Sheet 1

LOCAL EXCHANGE SERVICE

CONCURRENCE

Orchard Farm Telephone Company hereby assents to, adopts and concurs in the Local Exchange Service as set forth in Section 4 of Stoutland Telephone Company on file with the Missouri Public Service Commission and makes itself a party thereto and obligates itself to observe the provisions therein with the exceptions listed below.

(T)
(T)

EXCEPTIONS

BASIC ACCESS LINE SERVICE

B. RATES

	<u>Access</u>
Business One-Party	\$25.40
Residence One-Party	\$16.00

(I)

(D)

(D)

ISSUED: April 29, 2015

EFFECTIVE: June 1, 2015

By: Garrin Bott, President

GENERAL EXCHANGE TARIFF

P.S.C. MO No. 6
ORCHARD FARM TELEPHONE COMPANY.
d/b/a TDS Telecom
Missouri

Section 4

Original Sheet 1

LOCAL EXCHANGE SERVICE

CONCURRENCE

Orchard Farm Telephone Company, d/b/a TDS Telecom hereby assents to, adopts and concurs in the Local Exchange Service as set forth in Section 4 of Stoutland Telephone Company, d/b/a TDS Telecom tariff, on file with the Missouri Public Service Commission and makes itself a party thereto and obligates itself to observe the provisions therein with the exceptions listed below.

EXCEPTIONS

BASIC ACCESS LINE SERVICE

B. RATES

Phase 1 Rates:

	Touch Tone	
	<u>Access</u>	
Business One-Party With Touch Tone	\$25.40 ²	(T)
Without Touch Tone	\$24.40	

Residence One-Party With Touch Tone	\$13.25 ^{2,3}	(T)
Without Touch Tone	\$12.25 ³	(T)

Coin Telephone Service		
Coin Box Telephone Service	\$24.90	
Customer Owned /Coin Operated Telephone Service	\$26.00	

Phase 2 Rates: Effective May 28, 2013

	Touch Tone	
	<u>Access</u>	
Business One-Party With Touch Tone	\$25.40 ²	
Without Touch Tone	\$24.40	
Residence One-Party With Touch Tone	\$14.00	(I)
Without Touch Tone	\$14.00	(I)

² Effective November 28, 2007, the Touch Tone Dial Service will be included as a mandatory element of local service for new customers. As of November 28, 2007, customers who are not subscribed to Touch tone Dial Service will neither receive nor be charged for such service, except if they directly request the service or in the event of service disconnection and subsequent reconnection.

³ Rates Effective through May 27, 2013 (T)

GENERAL EXCHANGE TARIFF

P.S.C. MO No. 7
ORCHARD FARM TELEPHONE COMPANY
Missouri

Section 4
First Revised Sheet 2
Replaces Original Sheet 2

LOCAL EXCHANGE SERVICE

EXCEPTIONS - Continued

(D)
|
(D)

SYSTEM PLUS CENTREX SERVICE (SPCS)

B. SYSTEM FEATURES

E. RATES AND CHARGES

b. The monthly rates for
Simulated Facility Trunks are:

	<u>Business Monthly Rate</u>	<u>Residence Monthly Rate</u>	
1) 1 to 6 Trunks, each	\$26.90	\$14.85	(I)
2) 7 and above, each	\$26.25	\$14.20	(I)

c. Individual Features:

1) Individual features will be provided in addition to the non-optional features included with the system, on a per line, per month, per feature basis.

e) Cancel Call Waiting NO CHARGE SPCCW

COMPANY PROVIDED OFF PREMISE EXTENSION

	<u>S&E Code</u>	<u>Per Month</u>
Business and Residence Telephone Mileage not to exceed ¼ mile	OPEXR	\$2.00
Mileage rates over ¼ mile will apply	OPEM4	\$3.00

ISSUED: April 29, 2016

EFFECTIVE: June 1, 2016

By: Garrin Bott, President

FILED
Missouri Public
Service Commission
JI-2016-0306

CANCELLED - Missouri Public Service Commission - 10/31/2022 - TN-2023-0140 - YI-2023-0074

GENERAL EXCHANGE TARIFF

P.S.C. MO No. 6
ORCHARD FARM TELEPHONE COMPANY.
d/b/a TDS Telecom
Missouri

Section 4
Original Sheet 2

LOCAL EXCHANGE SERVICE

EXCEPTIONS - Continued

PAYSTATION SERVICE

B. Rates

4. Each outgoing local message Coin Rate²
\$0.25

² Upon implementation of the FCC rules preempting state regulations of payphone rates, this subsection will not apply.

SYSTEM PLUS CENTREX SERVICE (SPCS)

B. SYSTEM FEATURES

E. RATES AND CHARGES

b. The monthly rates for Simulated Facility Trunks are:

	<u>Business Monthly Rate</u>	<u>Residence Monthly Rate</u>
1) 1 to 6 Trunks, each	\$24.90	\$12.85
2) 7 and above, each	\$24.25	\$12.20

c. Individual Features:

1) Individual features will be provided in addition to the non-optional features included with the system, on a per line, per month, per feature basis.

e) Cancel Call Waiting NO CHARGE SPCCW

COMPANY PROVIDED OFF PREMISE EXTENSION

	<u>S&E Code</u>	<u>Per Month</u>
Business and Residence Telephone Mileage not to exceed ¼ mile	OPEXR	\$2.00
Mileage rates over ¼ mile will apply	OPEM4	\$3.00

ISSUED: February 27, 2013

EFFECTIVE: March 29, 2013

By: Joel Dohmeier, Vice-President

GENERAL EXCHANGE TARIFF

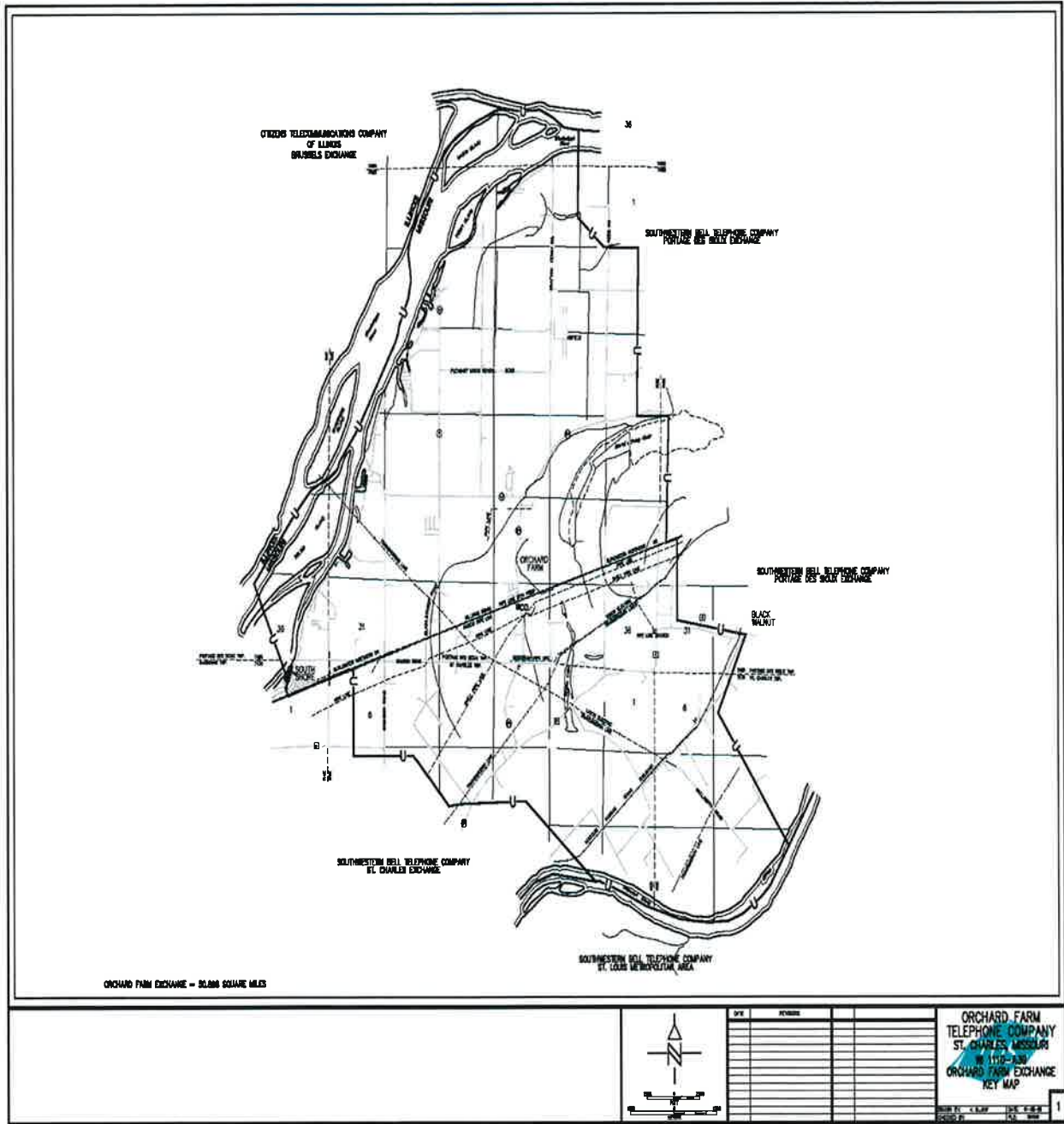
P.S.C. MO No. 6
ORCHARD FARM TELEPHONE COMPANY.
d/b/a TDS Telecom
Missouri

Section 4
Original Sheet 3

LOCAL EXCHANGE SERVICE

EXCHANGE BOUNDARY MAP

CANCELLED - Missouri Public Service Commission - 10/31/2022 - TN-2023-0140 - YI-2023-0074



ISSUED: February 27, 2013

EFFECTIVE: March 29, 2013

By: Joel Dohmeier, Vice-President

FILED
Missouri Public
Service Commission
JI-2013-0374

GENERAL EXCHANGE TARIFF

P.S.C. MO No. 6
ORCHARD FARM TELEPHONE COMPANY.
d/b/a TDS Telecom
Missouri

Section 4
Original Sheet 4

LOCAL EXCHANGE SERVICE

EXCEPTIONS - Continued

OPTIONAL METROPOLITAN CALLING AREA (MCA) SERVICE

1. Service Description
 - a. Metropolitan Calling Area (MCA) service is available in three distinct metropolitan areas in Missouri (i.e., St. Louis, Kansas City, and Springfield) as provided by the Missouri Public Service Commission in its December 23, 1992, Report and Order in Case No. TO-92-306.
 - b. The St. Louis Metropolitan Exchange, as defined in Southwestern Bell's tariff, is included in the St. Louis MCA. The basic local calling scope for each of these exchanges is the MCA-wide calling scope as described in this tariff.
 - c. In selected exchanges, MCA service is an optional service which provides the subscriber with an optional local calling area which includes the respective Metropolitan Exchange and certain customers in other exchanges where MCA service is also available.
 - d. In each MCA, exchanges (and Metropolitan Exchange Zones) are grouped into different MCA rate classifications.
2. Availability of Service
 - a. MCA is an optional service available to subscribers located in the Orchard Farm exchange.
3. Calling Scope
 - a. Service Areas
 1. St. Louis MCA

The total service area for the St. Louis MCA is comprised of the following groups:

 - a. MCA-1 Zone of Ferguson, Ladue, Mehlville, Overland, Riverview, Sappington and Webster Groves; and the MCA-2 Zone of Bridgeton, Creve Coeur, Florissant, Kirkwood, Oakville and Spanish Lake.

ISSUED: February 27, 2013

EFFECTIVE: March 29, 2013

By: Joel Dohmeier, Vice-President

FILED
Missouri Public
Service Commission
JI-2013-0374

CANCELLED - Missouri Public Service Commission - 10/31/2022 - TN-2023-0140 - YI-2023-0074

GENERAL EXCHANGE TARIFF

P.S.C. MO No. 6
ORCHARD FARM TELEPHONE COMPANY.
d/b/a TDS Telecom
Missouri

Section 4
Original Sheet 5

LOCAL EXCHANGE SERVICE

EXCEPTIONS - Continued

OPTIONAL METROPOLITAN CALLING AREA (MCA) SERVICE

3. Calling Scope (Continued)

a. Service Areas

1) St. Louis MCA

- (b) MCA-3 includes the following: exchanges of Portage Des Sioux, St. Charles, Chesterfield, Manchester, Valley Park, Fenton, Maxville, Imperial; and Orchard Farm Telephone Company's exchange of Orchard Farm.
- (c) MCA-4 includes the following: exchanges of Harvester, Pond, Eureka, High Ridge, Antonia, Herculaneum/Pevely; St. Peters, O'Fallon and Dardenne.
- (d) MCA-5 includes the following: exchanges of Gray Summit, Pacific, Cedar Hill, Ware, Hillsboro, Festus/Crystal City, Desoto, Beaufort, St. Clair, Union, Washington; Foristell, New Melle, Defiance, Augusta, Winfield, Moscow Mills and Troy.¹
- (e) MCA-6 includes the following exchanges of Foley, Holstein, Marthasville, Warrenton, and Wright City.²

b. Optional Calling Scopes

1) St. Louis MCA-3 calling scope

The calling scope for MCA subscribers in MCA-3 exchanges includes all customers in the Metropolitan Exchange, all customers in MCA-3 exchanges, and MCA subscribers in MCA-4, MCA-5 and MCA-6 exchanges.

2) St. Louis MCA-4 calling scope

The calling scope for MCA subscribers in MCA-4 exchanges includes all customers in the Metropolitan Exchange, all customers in MCA-3 and MCA-4 exchanges, and MCA subscribers in MCA-5 exchanges.

¹ Implementation of MCA-5 exchanges of Beaufont, St. Clair, Union and Washington its schedule for October 30, 2006.

² Implementation of MCA-6 its schedule for March 1, 2007.

ISSUED: February 27, 2013

EFFECTIVE: March 29, 2013

By: Joel Dohmeier, Vice-President

FILED
Missouri Public
Service Commission
JI-2013-0374

GENERAL EXCHANGE TARIFF

P.S.C. MO No. 6
ORCHARD FARM TELEPHONE COMPANY.
d/b/a TDS Telecom
Missouri

Section 4
Original Sheet 6

LOCAL EXCHANGE SERVICE

EXCEPTIONS - Continued

OPTIONAL METROPOLITAN CALLING AREA (MCA) SERVICE

3. Calling Scope (Continued)

b. Optional Calling Scopes

3) St. Louis MCA-5 calling scope

The calling scope for MCA subscribers in MCA-5 exchanges includes all customers in the Metropolitan Exchange, all customers in MCA-3 and MCA-4 exchanges, and MCA subscribers in MCA-5 exchanges.

4) St. Louis MCA-6 calling scope

The calling scope for MCA subscribers in MCA-6 exchanges includes all customers in the Metropolitan Exchange, all customers in MCA-Central, MCA-1 through 5 exchanges, and MCA subscribers in MCA-6 exchanges.

4. Regulations

- a. Unless otherwise specified in these regulations, MCA is offered to all classes and grades of residence and business customers located in an MCA exchange.
- b. Optional MCA Service is not offered in conjunction with Public, Semi-Public, Customer-Owned Pay Telephone or Cellular Service.
- c. MCA is designed and intended for the exclusive use of the end user customers of the Telephone Company. MCA is not to be shared, resold or used in configuration of customer-provided equipment with the intent of reselling the service. MCA is available to interexchange carriers or other telecommunications service providers for administrative trunks only.
- d. In situations where multiple access lines share the same working telephone number, if one such line subscribers to MCA service, then all lines must subscribe to MCA service.
- e. In situations where a hunting arrangement between access lines is provided by the Telephone Company, no MCA line may be configured to hunt to a non-MCA line.
- f. Unless otherwise specified, MCA is subject to the Rules and Regulations applying to all customer contracts as specified in the General Exchange Tariff of the Telephone Company. Furthermore, all Rules and Regulations governing Local Exchange Service apply to MCA service.
- g. The minimum service period for subscription to Optional MCA Service is one month.

ISSUED: February 27, 2013

EFFECTIVE: March 29, 2013

By: Joel Dohmeier, Vice-President

FILED
Missouri Public
Service Commission
JI-2013-0374

CANCELLED - Missouri Public Service Commission - 10/31/2022 - TN-2023-0140 - YI-2023-0074

GENERAL EXCHANGE TARIFF

P.S.C. MO No. 6
ORCHARD FARM TELEPHONE COMPANY,
d/b/a TDS Telecom
Missouri

Section 4

Original Sheet 7

LOCAL EXCHANGE SERVICE

EXCEPTIONS - Continued

OPTIONAL METROPOLITAN CALLING AREA (MCA) SERVICE

4. Regulations (Continued)

h. Rate Application

- 1) The MCA monthly rates specified apply on a per-line basis, except for Centrex type services, which are billed on a PBX trunk equivalent basis, as specified in the General Exchange tariff.
- 2) The MCA monthly rates are billed one month in advance.
- 3) Optional MCA rates and charges apply in addition to all other rates and charges paid by the customer for other services of the Telephone Company.

- i. Nonrecurring Service Equipment Charges are applicable on a per-line basis when a customer adds or deletes Optional MCA Service. These charges will be waived in an exchange for the first 60 days from the date that MCA Service becomes available in that exchange.

5. Rates and Charges

Phase 1 Rates:

(T)

a. Monthly Rates, per line:

	<u>Residence</u>	<u>Business</u>	
1) St. Louis MCA-3			
(a) Flat Rate Option	\$12.35 ¹	\$24.80	(T)

Phase 2 Rates: Effective May 28, 2013

(T)

a. Monthly Rates, per line:

1) St. Louis MCA-3			
(a) Flat Rate Option	\$11.60	\$24.80	(R)

b. Non-recurring Charges, per line

Service Order Charge, Subsequent	\$11.00	\$11.00	
Line Connection or Rearrangement Charge	\$20.00	\$20.00	

¹ Rates Effective through May 27, 2013

(T)

ISSUED: February 27, 2013

EFFECTIVE: March 29, 2013

By: Joel Dohmeier, Vice-President

FILED
Missouri Public
Service Commission
JI-2013-0374

CANCELLED - Missouri Public Service Commission - 10/31/2022 - TN-2023-0140 - YI-2023-0074

GENERAL EXCHANGE TARIFF

P.S.C. MO No. 7
ORCHARD FARM TELEPHONE COMPANY
Missouri

Section 5
First Revised Sheet 1
Replaces Original Sheet 1

MISCELLANEOUS SERVICES

CONCURRENCE

Orchard Farm Telephone Company hereby assents to, adopts and concurs in the Miscellaneous Services as set forth in Section 5 of Stoutland Telephone Company tariff on file with the Missouri Public Service Commission and makes itself a party thereto and obligates itself to observe the provisions therein with the exceptions listed below.

EXCEPTIONS

TOTAL TALK PACK

C.	RATES ¹		(D)
		<u>Rate Per Month</u>	(D)
1.	Residence ²		
	Local Bundle, per line		
	Basic Service	\$31.75	(I)
	Basic Service with Metropolitan Calling Area (MCA)	\$43.05	(I)
2.	Business ³		
	Local Bundle, per line		
	Basic Service	\$43.05	(I)
	Basic Service with Metropolitan Calling Area (MCA)	\$68.05	(I)

¹ Customers must also subscribe to Direct Long Distance.

² This service is grandfathered to existing customers effective January 7, 2009. The service will not be available to new customers after this date.

³ This service is grandfathered to existing customers effective December 30, 2010. The service will not be available to new customers after this date.

ISSUED: April 29, 2016

EFFECTIVE: June 1, 2016

By: Garrin Bott, President

FILED
Missouri Public
Service Commission
JI-2016-0306

CANCELLED - Missouri Public Service Commission - 10/31/2022 - TN-2023-0140 - YI-2023-0074

GENERAL EXCHANGE TARIFF

P.S.C. MO No. 6
ORCHARD FARM TELEPHONE COMPANY.
d/b/a TDS Telecom
Missouri

Section 5

Original Sheet 1

MISCELLANEOUS SERVICES

CONCURRENCE

Orchard Farm Telephone Company. d/b/a TDS Telecom hereby assents to, adopts and concurs in the Miscellaneous Services as set forth in Section 5 of Stoutland Telephone Company, d/b/a TDS Telecom tariff, on file with the Missouri Public Service Commission and makes itself a party thereto and obligates itself to observe the provisions therein with the exceptions listed below.

EXCEPTIONS

TOTAL TALK PACK

C. RATES¹

<u>Phase 1 Rates:</u>		<u>Rate Per Month</u>	(T)
1.	Residence ²		
	Local Bundle, per line		
	Basic Service	\$29.00 ⁴	(T)
	Basic Service with Metropolitan Calling Area (MCA)	\$41.05	
2.	Business ³		
	Local Bundle, per line		
	Basic Service	\$41.05	
	Basic Service with Metropolitan Calling Area (MCA)	\$66.05	
 <u>Phase 2 Rates: Effective May 28, 2013</u>		<u>Rate Per Month</u>	(T)
1.	Residence ²		
	Local Bundle, per line		
	Basic Service	\$29.75	(I)
	Basic Service with Metropolitan Calling Area (MCA)	\$41.05	
2.	Business ³		
	Local Bundle, per line		
	Basic Service	\$41.05	
	Basic Service with Metropolitan Calling Area (MCA)	\$66.05	

¹ Customers must also subscribe to TDS Long Distance's Total Talk Pack.
² This service is grandfathered to existing Residential customers effective January 7, 2009. The service will not be available to new customers after this date.
³ This service is grandfathered to existing Business customers effective December 30, 2010. This service will not be available to new customers after this date.
⁴ Rates Effective through May 27, 2013 (T)

ISSUED: February 27, 2013

EFFECTIVE: March 29, 2013

GENERAL EXCHANGE TARIFF

P.S.C. MO No. 7
ORCHARD FARM TELEPHONE COMPANY
Missouri

Section 5
First Revised Sheet 2
Replaces Original Sheet 2

MISCELLANEOUS SERVICES

EXCEPTIONS - Continued

STAR PACKAGES³

A. General

1. The STAR Packages are optional service bundles. Each package permits a customer to receive services and features for a flat monthly rate, for each STAR Package subscriber line provided. The STAR Package options include the following services:

- a) 3 STAR Expanded Package
Includes: Residential One-Party Line, Unlimited Metro Calling, Caller ID Deluxe, Call Waiting/Cancel Call Waiting, Call Forwarding and Preferred Call Forwarding.²

The 3 STAR Package can be upgraded to include Anonymous Call Rejection, Three-Way calling, Priority Ringing, Special Call Acceptance, and Personal Voicemail. The charge for this upgrade is set forth in C.2 following.

- b) 4 STAR Expanded Package
Includes: Residential One-Party Line, Unlimited Metro Calling, Caller ID Deluxe, Call Waiting/Cancel Call Waiting, Call Forwarding, Preferred Call Forwarding, Anonymous Call Rejection, and 300 Minutes of Direct Long Distance¹ calling.

The 4 STAR Package can be upgraded to include Three-Way calling, Priority Ringing, Special Call Acceptance, and Personal Voicemail. The charge for this upgrade is set forth in C.2 following.

- c) 5 STAR Expanded Package
Includes: Residential One-Party Line, Unlimited Metro Calling, Caller ID Deluxe, Call Waiting/Cancel Call Waiting, Call Forwarding, 3-Way Calling, Anonymous Call Rejection, Priority Ringing, Special Call Acceptance, Preferred Call Forwarding, Personal Voice Mail, and Unlimited Direct Long Distance¹ calling.

A. Rates

1.	Residence	<u>Rate Per Month</u>	
a)	3 STAR Expanded Package, per line	\$31.99 ³	(l)
b)	4 STAR Expanded Package, per line	\$41.99 ³	(l)
c)	5 STAR Expanded Package, per line	\$51.99 ³	(l)
2.	Package Upgrade	\$ 5.00	
3.	Package Change Fee	\$ 7.50	

¹ Customers must also subscribe to the corresponding Direct Long Distance Plan.

² Customers subscribing to Direct Long Distance will receive 30 minutes of calling at no charge.

³ This service is grandfathered to existing customers effective June 1, 2016. The service will not be available to new customers after this date.

ISSUED: April 29, 2016

EFFECTIVE: June 1, 2016

By: Garrin Bott, President

FILED
Missouri Public
Service Commission
JI-2016-0306

CANCELLED - Missouri Public Service Commission - 10/31/2022 - TN-2023-0140 - YI-2023-0074

GENERAL EXCHANGE TARIFF

P.S.C. MO No. 6
ORCHARD FARM TELEPHONE COMPANY,
d/b/a TDS Telecom
Missouri

Section 5
Original Sheet 2

MISCELLANEOUS SERVICES

EXCEPTIONS - Continued

STAR PACKAGES

A. General

1. The STAR Packages are optional service bundles. Each package permits a customer to receive services and features for a flat monthly rate, for each STAR Package subscriber line provided. The STAR Package options include the following services:

a) 3 STAR Expanded Package

Includes: Residential One-Party Line, Unlimited Metro Calling, Caller ID Deluxe, Call Waiting/Cancel Call Waiting, Call Forwarding and Preferred Call Forwarding.²

The 3 STAR Package can be upgraded to include Anonymous Call Rejection, Three-Way Calling, Priority Ringing, Special Call Acceptance, and Personal Voicemail³. The charge for this upgrade is set forth in C.2 following.

b) 4 STAR Expanded Package

Includes: Residential One-Party Line, Unlimited Metro Calling, Caller ID Deluxe, Call Waiting/Cancel Call Waiting, Call Forwarding, Preferred Call Forwarding, Anonymous Call Rejection, and 300 Minutes of TDS Long Distance¹ calling.

The 4 STAR Package can be upgraded to include Three-Way Calling, Priority Ringing, Special Call Acceptance and Personal Voicemail. The charge for this upgrade is set forth in C.2 following.

c) 5 STAR Expanded Package

Includes: Residential One-Party Line, Unlimited Metro Calling, Caller ID Deluxe, Call Waiting/Cancel Call Waiting, Call Forwarding, 3-Way Calling, Anonymous Call Rejection, Priority Ringing, Special Call Acceptance, Preferred Call Forwarding, Personal Voice Mail, and Unlimited TDS Long Distance¹ calling.

1 Customers must also subscribe to the corresponding TDS Long Distance STAR Plan.

2 Customers subscribing to TDS Long Distance STAR Plan will receive 30 minutes of calling at no charge.

C. Rates

	<u>Rate Per Month</u>
1. Residence	
a) 3 STAR Expanded Package, per line	\$29.99
b) 4 STAR Expanded Package, per line	\$39.99
c) 5 STAR Expanded Package, per line	\$49.99
2. Package Upgrade	\$5.00
3. Package Change Fee	\$7.50

ISSUED: February 27, 2013

EFFECTIVE: March 29, 2013

By: Joel Dohmeier, Vice-President

GENERAL EXCHANGE TARIFF

P.S.C. MO No. 7
ORCHARD FARM TELEPHONE COMPANY
Missouri

Section 5
Third Revised Sheet 3
Replaces Second Revised Sheet 3

MISCELLANEOUS SERVICES

EXCEPTIONS – Continued

(D)
—
(D)

STAR BUSINESS BUNDLES²

A. General

1. The STAR Business Bundles are optional offerings that package services and features together for a flat monthly rate that is applicable to each STAR Business Bundle subscriber line provided. This offering is available to 1–3 line business customers. There are 2 STAR Business Bundle options.

a) STAR Business Bundle – Expanded¹
Includes: Business One-Party Line, Touch Tone, 3 Features chosen from the following list: Caller ID Deluxe, Call Forwarding, Call Forward Remote Access, Call Waiting/Cancel Call Waiting, 3-Way Calling, or Voice Mail, and 200 Minutes of Metro Calling and Direct Long Distance³ calling.

b) STAR Business Bundle – Unlimited Expanded¹
Includes: Business One-Party Line, Touch Tone, 3 Features chosen from the following list: Caller ID Deluxe, Call Forwarding, Call Forward Remote Access, Call Waiting/Cancel Call Waiting, 3-Way Calling, or Voice Mail, and Unlimited Minutes of Metro Calling and Direct Long Distance³ calling.

(T)

C. Rates

Rate Per Month¹

1.	Business, Per Line	
	a) STAR Business Bundle Expanded	\$41.99 ²
	b) STAR Business Bundle Unlimited Expanded	\$61.99 ²
2.	Service Order Charge	\$10.00

¹ One, Two, and Three-Year Contract rates are also available.

² This service is grandfathered to existing customers effective June 1, 2016. The service will not be available to new customers after this date.

³ Customers must also subscribe to the corresponding Direct Long Distance plan.

ISSUED: August 2, 2016

EFFECTIVE: October 1, 2016

By: Garrin Bott, President

FILED
Missouri Public
Service Commission
JI-2017-0023

CANCELLED - Missouri Public Service Commission - 10/31/2022 - TN-2023-0140 - YI-2023-0074

GENERAL EXCHANGE TARIFF

P.S.C. MO No. 7
ORCHARD FARM TELEPHONE COMPANY
Missouri

Second Revised Sheet 3 Section 5
~~First Revised Sheet 3~~
~~Replaces Original Sheet 3~~

MISCELLANEOUS SERVICES

Replaced First Revised Sheet 3

EXCEPTIONS - Continued

SAFETY LINE SERVICE²

C. RATES AND CHARGES

Monthly Rate

Bundle Base Rate – DSL Market A	\$51.95 ¹	(I)
Bundle Base Rate – DSL Market B	\$57.20 ¹	(I)

¹ Other data speeds may be available for an additional charge

² This service is grandfathered to existing customers effective August 1, 2012. This service will not be available to new customers as of this date.

STAR BUSINESS BUNDLES²

A. General

1. The STAR Business Bundles are optional offerings that package services and features together for a flat monthly rate that is applicable to each STAR Business Bundle subscriber line provided. This offering is available to 1-3 line business customers. There are 2 STAR Business Bundle options.
 - a) STAR Business Bundle – Expanded¹
Includes: Business One-Party Line, Touch Tone, 3 Features chosen from the following list: Caller ID Deluxe, Call Forwarding, Call Forward Remote Access, Call Waiting/Cancel Call Waiting, 3-Way Calling, or Voice Mail, and 200 Minutes of Metro Calling and Direct Long Distance³ calling.
 - b) STAR Business Bundle – Expanded¹
Includes: Business One-Party Line, Touch Tone, 3 Features chosen from the following list: Caller ID Deluxe, Call Forwarding, Call Forward Remote Access, Call Waiting/Cancel Call Waiting, 3-Way Calling, or Voice Mail, and Unlimited Minutes of Metro Calling and Direct Long Distance³ calling.

C. Rates

	<u>Rate Per Month¹</u>	
1. Business, Per Line		
a) STAR Business Bundle Expanded	\$41.99 ²	(I)
b) STAR Business Bundle Unlimited Expanded	\$61.99 ²	(I)
2. Service Order Charge	\$10.00	

¹ One, Two, and Three-Year Contract rates are also available.

² This service is grandfathered to existing customers effective June 1, 2016. The service will not be available to new customers after this date.

³ Customers must also subscribe to the corresponding Direct Long Distance plan.

ISSUED: April 29, 2016

EFFECTIVE: June 1, 2016

By: Garrin Bott, President

GENERAL EXCHANGE TARIFF

P.S.C. MO No. 6
ORCHARD FARM TELEPHONE COMPANY.
d/b/a TDS Telecom
Missouri

Section 5
First Revised Sheet 3
Cancels Original Sheet 3

MISCELLANEOUS SERVICES

EXCEPTIONS - Continued

SAFETY LINE SERVICE ²

C. RATES AND CHARGES

	<u>Monthly Rate</u>	
Bundle Base Rate – DSL Market A	\$51.95 ¹	(l)
Bundle Base Rate – DSL Market B	\$57.20 ¹	(l)

¹ Other data speeds may be available for an additional charge.

² This service is grandfathered to existing customers effective August 1, 2012. This service will not be available to new customers as of this date.

STAR BUSINESS BUNDLES

A. General

1. The STAR Business Bundles are optional offerings that package services and features together for a flat monthly rate that is applicable to each STAR Business Bundle subscriber line provided. This offering is available to 1-3 line business customers. There are 2 STAR Business Bundle options.

- a) STAR Business Bundle – Expanded¹
Includes: Business One-Party Line, Touch Tone, 3 Features chosen from the following list: Caller ID Deluxe, Call Forwarding, Call Forward Remote Access, Call Waiting/Cancel Call Waiting, 3-Way Calling, or Voice Mail, and 200 Minutes of Metro Calling and TDS Long Distance² calling.
- b) STAR Business Bundle Unlimited – Expanded¹
Includes: Business One-Party Line, Touch Tone, 3 Features chosen from the following list: Caller ID Deluxe, Call Forwarding, Call Forward Remote Access, Call Waiting/Cancel Call Waiting, 3-Way Calling, or Voice Mail, and Unlimited Minutes of Metro Calling and TDS Long Distance² calling.

C. Rates

	<u>Rate Per Month¹</u>
1. Business, Per Line	
a) STAR Business Bundle Expanded	\$39.99
b) STAR Business Bundle Unlimited Expanded	\$59.99
	<u>Non-Recurring Charge</u>
2. Service Order Charge	\$10.00

¹ One, Two, and Three-Year Contract rates are also available.

ISSUED: September 6, 2013

EFFECTIVE: September 16, 2013

By: Joel Dohmeier, Vice-President

FILED
Missouri Public
Service Commission
JI-2014-0116

GENERAL EXCHANGE TARIFF

P.S.C. MO No. 6
ORCHARD FARM TELEPHONE COMPANY.
d/b/a TDS Telecom
Missouri

Section 5
Original Sheet 3

MISCELLANEOUS SERVICES

EXCEPTIONS - Continued

SAFETY LINE SERVICE ²

C. RATES AND CHARGES

Monthly Rate

Bundle Base Rate – DSL Market A	\$49.95 ¹
Bundle Base Rate – DSL Market B	\$55.20 ¹

¹ Other data speeds may be available for an additional charge.

² This service is grandfathered to existing customers effective August 1, 2012. This service will not be available to new customers as of this date.

STAR BUSINESS BUNDLES

A. General

1. The STAR Business Bundles are optional offerings that package services and features together for a flat monthly rate that is applicable to each STAR Business Bundle subscriber line provided. This offering is available to 1-3 line business customers. There are 2 STAR Business Bundle options.

- a) STAR Business Bundle – Expanded¹
Includes: Business One-Party Line, Touch Tone, 3 Features chosen from the following list: Caller ID Deluxe, Call Forwarding, Call Forward Remote Access, Call Waiting/Cancel Call Waiting, 3-Way Calling, or Voice Mail, and 200 Minutes of Metro Calling and TDS Long Distance² calling.
- b) STAR Business Bundle Unlimited – Expanded¹
Includes: Business One-Party Line, Touch Tone, 3 Features chosen from the following list: Caller ID Deluxe, Call Forwarding, Call Forward Remote Access, Call Waiting/Cancel Call Waiting, 3-Way Calling, or Voice Mail, and Unlimited Minutes of Metro Calling and TDS Long Distance² calling.

C. Rates

	<u>Rate Per Month¹</u>
1. Business, Per Line	
a) STAR Business Bundle Expanded	\$39.99
b) STAR Business Bundle Unlimited Expanded	\$59.99
	<u>Non-Recurring Charge</u>
2. Service Order Charge	\$10.00

¹ One, Two, and Three-Year Contract rates are also available.

ISSUED: February 27, 2013

EFFECTIVE: March 29, 2013

~~CANCELED~~
September 16, 2013
By: Joel Dohmeier, Vice-President
Missouri Public
Service Commission
JI-2014-0116

FILED
Missouri Public
Service Commission
JI-2013-0374

GENERAL EXCHANGE TARIFF

P.S.C. MO No. 7

Section 5

ORCHARD FARM TELEPHONE COMPANY

Third Revised Sheet 4 ~~First Revised Sheet 4~~

Missouri

Replaces Second Revised Sheet 4 ~~Replaces Original Sheet 4~~

MISCELLANEOUS SERVICES

EXCEPTIONS - Continued

SECURITY LINE SERVICE²

C. RATES AND CHARGES

Monthly Rate

Bundle Base Rate

\$41.95¹

(I)

CANCELLED - Missouri Public Service Commission - 10/31/2022 - TN-2023-0140 - YI-2023-0074

¹ Other data speeds may be available for an additional charge.

² This service is grandfathered to existing customers effective June 1, 2016. The service will not be available to new customers after this date.

ISSUED: April 29, 2016

EFFECTIVE: June 1, 2016

By: Garrin Bott, President

FILED
Missouri Public
Service Commission
JI-2016-0306

GENERAL EXCHANGE TARIFF

P.S.C. MO No. 6
ORCHARD FARM TELEPHONE COMPANY.
d/b/a TDS Telecom
Missouri

Section 5
Second Revised Sheet 4
Cancels First Revised Sheet 4

MISCELLANEOUS SERVICES

EXCEPTIONS - Continued

SECURITY LINE SERVICE

C. RATES AND CHARGES

Monthly Rate

Bundle Base Rate – DSL Market A
Bundle Base Rate – DSL Market B

\$41.95¹
\$47.20¹

(T)
(N)

¹ Other data speeds may be available for an additional charge.

ISSUED: September 20, 2013

EFFECTIVE: September 30, 2013

By: Joel Dohmeier, Vice-President

FILED
Missouri Public
Service Commission
JI-2014-0134

CANCELLED
June 1, 2016
Missouri Public
Service Commission
JI-2016-0306

GENERAL EXCHANGE TARIFF

P.S.C. MO No. 6
ORCHARD FARM TELEPHONE COMPANY.
d/b/a TDS Telecom
Missouri

Section 5
First Revised Sheet 4
Cancels Original Sheet 4

MISCELLANEOUS SERVICES

EXCEPTIONS - Continued

SECURITY LINE SERVICE

C. RATES AND CHARGES

Monthly Rate

Bundle Base Rate

\$41.95¹

(I)

¹ Other data speeds may be available for an additional charge.

ISSUED: September 6, 2013

EFFECTIVE: September 16, 2013

CANCELED

September 30, 2013
By: Joel Dohmeier, Vice-President
Missouri Public
Service Commission
JI-2014-0134

FILED
Missouri Public
Service Commission
JI-2014-0116

GENERAL EXCHANGE TARIFF

P.S.C. MO No. 6
ORCHARD FARM TELEPHONE COMPANY.
d/b/a TDS Telecom
Missouri

Section 5
Original Sheet 4

MISCELLANEOUS SERVICES

EXCEPTIONS - Continued

SECURITY LINE SERVICE

C. RATES AND CHARGES

Monthly Rate

Bundle Base Rate

\$39.95 ¹

¹ Other data speeds may be available for an additional charge.

ISSUED: February 27, 2013

EFFECTIVE: March 29, 2013

~~CANCELED~~
September 16, 2013
By: Joel Donmeier, Vice-President
Missouri Public
Service Commission
JI-2014-0116

FILED
Missouri Public
Service Commission
JI-2013-0374

GENERAL EXCHANGE TARIFF

P.S.C. MO No. 6
ORCHARD FARM TELEPHONE COMPANY.
d/b/a TDS Telecom
Missouri

Section 5
Second Revised Sheet 4
Cancels First Revised Sheet 4

MISCELLANEOUS SERVICES

EXCEPTIONS - Continued

SECURITY LINE SERVICE

C. RATES AND CHARGES

Monthly Rate

Bundle Base Rate – DSL Market A
Bundle Base Rate – DSL Market B

\$41.95¹
\$47.20¹

(T)
(N)

¹ Other data speeds may be available for an additional charge.

ISSUED: September 20, 2013

EFFECTIVE: September 30, 2013

By: Joel Dohmeier, Vice-President

FILED
Missouri Public
Service Commission
JI-2014-0134

CANCELLED
June 1, 2016
Missouri Public
Service Commission
JI-2016-0306

GENERAL EXCHANGE TARIFF

P.S.C. MO No. 6
ORCHARD FARM TELEPHONE COMPANY.
d/b/a TDS Telecom
Missouri

Section 5
First Revised Sheet 4
Cancels Original Sheet 4

MISCELLANEOUS SERVICES

EXCEPTIONS - Continued

SECURITY LINE SERVICE

C. RATES AND CHARGES

Monthly Rate

Bundle Base Rate

\$41.95¹

(I)

¹ Other data speeds may be available for an additional charge.

ISSUED: September 6, 2013

EFFECTIVE: September 16, 2013

CANCELED

September 30, 2013
By: Joel Dohmeier, Vice-President
Missouri Public
Service Commission
JI-2014-0134

FILED
Missouri Public
Service Commission
JI-2014-0116

GENERAL EXCHANGE TARIFF

P.S.C. MO No. 6
ORCHARD FARM TELEPHONE COMPANY.
d/b/a TDS Telecom
Missouri

Section 5
Original Sheet 4

MISCELLANEOUS SERVICES

EXCEPTIONS - Continued

SECURITY LINE SERVICE

C. RATES AND CHARGES

Monthly Rate

Bundle Base Rate

\$39.95 ¹

¹ Other data speeds may be available for an additional charge.

ISSUED: February 27, 2013

EFFECTIVE: March 29, 2013

~~CANCELED~~
September 16, 2013
By: Joel Donmeier, Vice-President
Missouri Public
Service Commission
JI-2014-0116

FILED
Missouri Public
Service Commission
JI-2013-0374

GENERAL EXCHANGE TARIFF

**P.S.C. MO. No. 7
ORCHARD FARM TELEPHONE COMPANY
d/b/a MISSOURICOM**

**Section 6
1st Revised Sheet 1
Cancels Original Sheet 1**

SERVICE CONNECTION CHARGES

CONCURRENCE

Orchard Farm Telephone Company d/b/a Missouriicom hereby assents to, adopts and concurs in (T)
the Service Connection Charges as set forth in Section 6 of Stoutland Telephone Company d/b/a (T)
Missouricom tariff, on file with the Missouri Public Service Commission and makes itself a
party thereto and obligates itself to observe the provisions therein with the excepts listed below.

(D)

CANCELLED - Missouri Public Service Commission - 10/31/2022 - TN-2023-0140 - YI-2023-0074

Issued: October 29, 2021

Garrin Bott, President
Orchard Farm Telephone Company d/b/a Missouriicom
101 Main Street, P.O. Box 175
New Florence, MO 63363-0175

Effective: December 1, 2021

**FILED
Missouri Public
Service Commission
JI-2022-0142**

GENERAL EXCHANGE TARIFF

P.S.C. MO No. 6
ORCHARD FARM TELEPHONE COMPANY.
d/b/a TDS Telecom
Missouri

Section 6
Original Sheet 1

SERVICE CONNECTION CHARGES

CONCURRENCE

Orchard Farm Telephone Company. d/b/a TDS Telecom hereby assents to, adopts and concurs in the Service Connection Charges as set forth in Section 6 of Stoutland Telephone Company, d/b/a TDS Telecom tariff, on file with the Missouri Public Service Commission and makes itself a party thereto and obligates itself to observe the provisions therein with the exceptions listed below.

EXCEPTIONS

B. SERVICE DESCRIPTIONS

- 1. Service Order Charge – Initial:
Initial Service Order charge applies to the work performed by the telephone company to establish a new customer into the billing system. It is also applicable for the connection of additional central office lines, trunks, or line segments to an established service. Transfer of service involving a request for a final bill or, if a final bill is not requested, a refusal of the future customer to accept full responsibility for the former customer's account.
- 4. Line Connection Charge:
Central Office Work is included in the Line Connection Charge.
- 5. Premise Visit Charge
Additional work operations such as premises visits made to deliver new telephone number designations or additional service orders processed to effect multiple completion dates requested by the customer will be charged for at levels not to exceed differential costs of labor and material.

D. RATES

	<u>Non-Recurring Rates</u>
1. Initial Service Order	\$20.00
2. Subsequent Service Order	\$11.00
3. Central Office Work	Included in Line Connection
4. Line Connection	\$20.00
5. Premise Visit	See Description Above
6. Rearrangement/Repair	\$20.00
7. Reconnect for Non-Payment	\$18.00
8. NSF Charge	\$15.00

CANCELLED
December 1, 2021
Missouri Public
Service Commission
JI-2022-0142

ISSUED: February 27, 2013

EFFECTIVE: March 29, 2013

By: Joel Dohmeier, Vice-President

FILED
Missouri Public
Service Commission
JI-2013-0374

GENERAL EXCHANGE TARIFF

P.S.C. MO No. 7
ORCHARD FARM TELEPHONE COMPANY
Missouri

Section 7
First Revised Sheet 1
Replaces Original Sheet 1

DIRECTORY SERVICES

HOLD FOR FUTURE USE

CANCELLED - Missouri Public Service Commission - 10/31/2022 - TN-2023-0140 - YI-2023-0074

(D)

(D)

ISSUED: February 17, 2016

EFFECTIVE: March 18, 2016

By: Garrin Bott, President

FILED
Missouri Public
Service Commission
JI-2016-0218

GENERAL EXCHANGE TARIFF

P.S.C. MO No. 6
ORCHARD FARM TELEPHONE COMPANY.
d/b/a TDS Telecom
Missouri

Section 7
Original Sheet 1

DIRECTORY SERVICES

CONCURRENCE

Orchard Farm Telephone Company. d/b/a TDS Telecom hereby assents to, adopts and concurs in the Directory Services as set forth in Section 7 of Stoutland Telephone Company, d/b/a TDS Telecom tariff, on file with the Missouri Public Service Commission and makes itself a party thereto and obligates itself to observe the provisions therein with the exceptions listed below.

EXCEPTIONS

DIRECTORY LISTINGS

C. RATES

Monthly
Rate

- | | |
|---|--------|
| 1. Primary Listings (See Condition 1) | |
| 2. Additional Line of Information , per listing | \$1.00 |
| 3. Additional Directory Listings, Business | \$2.00 |
| 4. Additional Directory Listings, Residence | \$1.00 |
| 5. Foreign Directory Listings, per listing ¹ | \$2.00 |
| 6. Non-Published Service, per listing ² | \$2.00 |
| 7. Non-listed Service, per listing ² | \$1.50 |

¹ A foreign or noncustomer listing may be furnished to customers requesting that their listing be included in the directory of an exchange other than that from which service is rendered.

² The charge will be omitted for customers having other listed service.

DIRECTORY ASSISTANCE SERVICE

D. RATES

Operator Assisted and Credit Card Calls:

The flat-rate Direct dialed Call to Directory Assistance applies in addition to the following surcharges for:

Operator-Assisted Calls	\$0.90
Credit Card Calls	\$0.90

ISSUED: February 27, 2013

CANCELLED
March 18, 2016
Missouri Public
Service Commission
JI-2016-0218

EFFECTIVE: March 29, 2013

By: Joel Dohmeier, Vice-President

FILED
Missouri Public
Service Commission
JI-2013-0374

GENERAL EXCHANGE TARIFF

P.S.C. MO. NO. 6
ORCHARD FARM TELEPHONE COMPANY
Missouri

Section 8

Original Sheet 1

OPTIONAL SERVICES

CONCURRENCE

Orchard Farm Telephone Company, d/b/a TDS Telecom hereby assents to, adopts and concurs in the Optional Services as set forth in Section 8 of Stoutland Telephone Company, d/b/a TDS Telecom tariff, on file with the Missouri Public Service Commission and makes itself a party thereto and obligates itself to observe the provisions therein with the exceptions listed below.

EXCEPTIONS

CUSTOM CALLING SERVICES

B. Service Descriptions

17. **Call Forward – Remote Access**

This service is an additive to the Call Forwarding service and allows the customer to activate and deactivate Call Forwarding from a telephone in another location. All calls forwarded are subject to transmission limitations and all applicable local and long distance charges.

D. Rates And Discounts

1. Rates

<u>One Service Per Line</u>	<u>Rate Per Month</u>	<u>Trans Code</u>	<u>Activation Code</u>	<u>Deactivation Code</u>
a. Call Forwarding	\$1.95	CCCF	*72	*73
d. Call Hold	2.00	CCCH	*52	N/A
e. 3-Way Calling	1.95	CCCC	N/A	N/A
f. Call Transfer	0.95	CCCT	N/A	N/A
g. Call Waiting/Cancel Call Waiting	2.75	CWCCW	N/A/*70	N/A
h. Home Intercom-Basic	0.95	CCHI	N/A	N/A
i. Warm Line	0.95	CCWL	N/A	N/A
j. Hotline	0.95	CCHT	N/A	N/A
k. Personal Ringing				
1) Second Directory Number	3.25	CPR2	N/A	N/A
2) Third Directory Number ¹	1.00 (incremental)	CPR3	N/A	N/A
l. Speed Call 8	1.95	CCSE	*74	N/A
m. Speed Call 30	2.75	CCST	*75	N/A
n. Do-Not-Disturb	0.95	CCDD	*78	*79
			(*10 for Override)	
o. Call Reminder	0.95	CCCR	*95	*96
q. Call Forward-Remote Access ¹ (Additive to Call Forwarding)	1.25	CCFM	N/A	N/A

ISSUED: February 27, 2013

EFFECTIVE: March 29, 2013

BY: Joel Dohmeier, Vice President

FILED
Missouri Public
Service Commission
JI-2013-0374

GENERAL EXCHANGE TARIFF

P.S.C. MO. NO. 6
ORCHARD FARM TELEPHONE COMPANY
Missouri

Section 8
Original Sheet 2

OPTIONAL SERVICES

CUSTOM CALLING SERVICES (Continued)

D. Rates And Discounts (Continued)

3. Pay-Per-Use Rates

	<u>Per Successful Activation</u>	<u>Monthly Cap</u>
a. Three-Way Calling	\$0.75	\$4.50
b. Call Forwarding	0.75	4.50

CANCELLED - Missouri Public Service Commission - 10/31/2022 - TN-2023-0140 - YI-2023-0074

ISSUED: February 27, 2013

EFFECTIVE: March 29, 2013

BY: Joel Dohmeier, Vice President

FILED
Missouri Public
Service Commission
JI-2013-0374

GENERAL EXCHANGE TARIFF

P.S.C. MO No. 6
ORCHARD FARM TELEPHONE COMPANY.
d/b/a TDS Telecom
Missouri

Section 9
Original Sheet 1

CONSTRUCTION CHARGES

CONCURRENCE

Orchard Farm Telephone Company. d/b/a TDS Telecom hereby assents to, adopts and concurs in the Construction Charges as set forth in Section 9 of Stoutland Telephone Company, d/b/a TDS Telecom tariff, on file with the Missouri Public Service Commission and makes itself a party thereto and obligates itself to observe the provisions therein with the exceptions listed below.

EXCEPTIONS

No Exceptions

CANCELLED - Missouri Public Service Commission - 10/31/2022 - TN-2023-0140 - YI-2023-0074

ISSUED: February 27, 2013

EFFECTIVE: March 29, 2013

By: Joel Dohmeier, Vice-President

FILED
Missouri Public
Service Commission
JI-2013-0374

GENERAL EXCHANGE TARIFF

P.S.C. MO No. 6
ORCHARD FARM TELEPHONE COMPANY.
d/b/a TDS Telecom
Missouri

Section 10
Original Sheet 1

PRIVATE LINE SERVICES

CONCURRENCE

Orchard Farm Telephone Company. d/b/a TDS Telecom hereby assents to, adopts and concurs in the Private Line Services as set forth in Section 10 of Stoutland Telephone Company, d/b/a TDS Telecom tariff, on file with the Missouri Public Service Commission and makes itself a party thereto and obligates itself to observe the provisions therein with the exceptions listed below.

EXCEPTIONS

No Exceptions

CANCELLED - Missouri Public Service Commission - 10/31/2022 - TN-2023-0140 - YI-2023-0074

ISSUED: February 27, 2013

EFFECTIVE: March 29, 2013

By: Joel Dohmeier, Vice-President

FILED
Missouri Public
Service Commission
JI-2013-0374

GENERAL EXCHANGE TARIFF

**P.S.C. MO. No. 7
ORCHARD FARM TELEPHONE COMPANY
d/b/a MISSOURICOM**

**Section 11
Fourth Revised Sheet 1
Cancels Third Revised Sheet 1**

ACCESS SERVICES

CONCURRENCE

Orchard Farm Telephone Company hereby assents to, adopts and concurs in the Access Services as set forth in Section 11 of Stoutland Telephone Company tariff, on file with the Missouri Public Service Commission and makes itself a party thereto and obligates itself to observe the provisions therein with the exceptions listed below.

EXCEPTIONS

D. RATES AND CHARGES

1.	<u>Common Line Access Service</u>		Tariff Section Reference
	(a) <u>Intrastate Carrier Common Line Access</u>	<u>Rate</u>	
	- Originating	\$0.02400	3.6
	- Terminating	\$0.00	3.6
2.	<u>Switched Access Service</u>		Tariff Section Reference
	(b) <u>Local Transport</u>	<u>Rate</u>	
	4. <u>Tandem Switched Transport</u>		
	b. <u>Tandem Switched Termination</u>		
	Per Access Minute Per Termination		6.2(A)(3)(c)
	- Originating	\$0.004178	
	(c) <u>End Office</u>		
	1. <u>Local Switching, Per Access Minute</u>		6.2(B)(1)
	- Originating	\$0.026700	(C)

**The Company concurs with the rates, terms and conditions of NECA's Tariff FCC No. 5 for this element, which can be viewed at <https://www.neca.org/member-services/tariff-5> (T)

Issued: June 15, 2021

Garrin Bott, President
101 Main Street, P.O. Box 175
New Florence, MO 63363-0175

Effective: July 1, 2021

FILED
Missouri Public
Service Commission
JI-2021-0240

CANCELLED - Missouri Public Service Commission - 10/31/2022 - TN-2023-0140 - YI-2023-0074

GENERAL EXCHANGE TARIFF

P.S.C. MO No. 7
ORCHARD FARM TELEPHONE COMPANY
Missouri

Section 11
Third Revised Sheet 1
Cancels Second Revised Sheet 1

ACCESS SERVICES

CONCURRENCE

Orchard Farm Telephone Company hereby assents to, adopts and concurs in the Access Services as set forth in Section 11 of Stoutland Telephone Company tariff, on file with the Missouri Public Service Commission and makes itself a party thereto and obligates itself to observe the provisions therein with the exceptions listed below.

EXCEPTIONS

D. RATES AND CHARGES

1.	<u>Common Line Access Service</u>		Tariff Section Reference
(a)	<u>Intrastate Carrier Common Line Access</u>	<u>Rate</u>	
	- Originating	\$0.02400	3.6
	- Terminating	\$0.00	3.6
2.	<u>Switched Access Service</u>		Tariff Section Reference
(b)	<u>Local Transport</u>	<u>Rate</u>	
4.	<u>Tandem Switched Transport</u>		
b.	<u>Tandem Switched Termination</u>		
	Per Access Minute Per Termination		6.2(A)(3)(c)
	- Originating	\$0.004178	
(c)	<u>End Office</u>		
1.	<u>Local Switching, Per Access Minute</u>		6.2(B)(1)
	- Terminating	\$0.013975	(R)

ISSUED: May 29, 2015

EFFECTIVE: July 1, 2015

By: Garrin Bott, President

CANCELLED
July 1, 2021
Missouri Public
Service Commission
JI-2021-0240

FILED
Missouri Public
Service Commission
JI-2015-0348

GENERAL EXCHANGE TARIFF

P.S.C. MO No. 6
ORCHARD FARM TELEPHONE COMPANY.
d/b/a TDS Telecom
Missouri

Section 11
Second Revised Sheet 1
Cancels First Revised Sheet 1

ACCESS SERVICES

CONCURRENCE

Orchard Farm Telephone Company, d/b/a TDS Telecom hereby assents to, adopts and concurs in the Access Services as set forth in Section 11 of Stoutland Telephone Company, d/b/a TDS Telecom tariff, on file with the Missouri Public Service Commission and makes itself a party thereto and obligates itself to observe the provisions therein with the exceptions listed below.

EXCEPTIONS

D. RATES AND CHARGES

1. Common Line Access Service

		Rate	Tariff Section Reference
(a)	<u>Intrastate Carrier Common Line Access</u>		
	-Originating	\$0.02400	3.6
	-Terminating	\$0.00	3.6

2. Switched Access Service

		Rate	Tariff Section Reference
(b)	<u>Local Transport</u>		

4. Tandem Switched Transport

b.	<u>Tandem Switched Termination</u>		
	Per Access Minute Per Termination		6.2.(A)(3)(c)
	-Originating	\$0.004178	

(c)	<u>End Office</u>		
	1. <u>Local Switching, Per Access Minute</u>		6.2.(B)(1)

	-Terminating	\$0.024091	(D) (R)
--	--------------	------------	------------

CANCELLED
July 1, 2015
Missouri Public
Service Commission
JI-2015-0348

ISSUED: May 30, 2014

EFFECTIVE: July 1, 2014

By: Joel Dohmeier, Vice-President

FILED
Missouri Public
Service Commission
JI-2014-0517

GENERAL EXCHANGE TARIFF

P.S.C. MO No. 6
ORCHARD FARM TELEPHONE COMPANY.
d/b/a TDS Telecom
Missouri

Section 11
First Revised Sheet 1
Cancels Original Sheet 1

ACCESS SERVICES

CONCURRENCE

Orchard Farm Telephone Company. d/b/a TDS Telecom hereby assents to, adopts and concurs in the Access Services as set forth in Section 11 of Stoutland Telephone Company, d/b/a TDS Telecom tariff, on file with the Missouri Public Service Commission and makes itself a party thereto and obligates itself to observe the provisions therein with the exceptions listed below.

EXCEPTIONS

D. RATES AND CHARGES

1. Common Line Access Service

		<u>Rate</u>	<u>Tariff Section Reference</u>
(a)	<u>Intrastate Carrier Common Line Access</u>		
	-Originating	\$0.02400	3.6
	-Terminating	\$0.00	3.6

2. Switched Access Service

		<u>Rate</u>	<u>Tariff Section Reference</u>
(b)	<u>Local Transport</u>		

4. Tandem Switched Transport

b.	<u>Tandem Switched Termination</u>		
	Per Access Minute Per Termination		6.2.(A)(3)(c)
	-Originating	\$0.004178	
	-Terminating	\$0.002171	

(c)	<u>End Office</u>		
	1. <u>Local Switching, Per Access Minute</u>		6.2.(B)(1)

-	Originating	\$0.026700	
-	Terminating	\$0.032650	

(I)

(D)

|

(D)

ISSUED: May 31, 2013

EFFECTIVE: July 2, 2013

CANCELLED
July 1, 2014
Missouri Public
Service Commission
JI-2014-0517

By: Joel Dohmeier, Vice-President

Filed
Missouri Public
Service Commission
JI-2013-0572

GENERAL EXCHANGE TARIFF

P.S.C. MO No. 6
ORCHARD FARM TELEPHONE COMPANY.
d/b/a TDS Telecom
Missouri

Section 11
Original Sheet 1

ACCESS SERVICES

CONCURRENCE

Orchard Farm Telephone Company. d/b/a TDS Telecom hereby assents to, adopts and concurs in the Access Services as set forth in Section 11 of Stoutland Telephone Company, d/b/a TDS Telecom tariff, on file with the Missouri Public Service Commission and makes itself a party thereto and obligates itself to observe the provisions therein with the exceptions listed below.

EXCEPTIONS

D. RATES AND CHARGES

1. Common Line Access Service

	<u>Rate</u>	<u>Tariff Section Reference</u>
(a) <u>Intrastate Carrier Common Line Access</u>		
-Originating	\$0.02400	3.6
-Terminating	\$0.00	3.6

2. Switched Access Service

	<u>Rate</u>	<u>Tariff Section Reference</u>
(b) <u>Local Transport</u>		
4. <u>Tandem Switched Transport</u>		
b. <u>Tandem Switched Termination</u>		
Per Access Minute Per Termination		6.2.(A)(3)(c)
-Originating	\$0.004178	
-Terminating	\$0.002090	
(c) <u>End Office</u>		
1. <u>Local Switching, Per Access Minute</u>		6.2.(B)(1)
- Originating	\$0.026700	
- Terminating	\$0.026700	
2. <u>Transitional Rate Element</u>		6.2(B)(2)
- Terminating	\$0.038899	

CANCELLED
July 2, 2013
Missouri Public
Service Commission
JI-2013-0572

ISSUED: February 27, 2013

EFFECTIVE: March 29, 2013

By: Joel Dohmeier, Vice-President

FILED
Missouri Public
Service Commission
JI-2013-0374

GENERAL EXCHANGE TARIFF

**P.S.C. MO. No. 7
ORCHARD FARM TELEPHONE COMPANY
d/b/a MISSOURICOM**

**Section 11
1st Revised Sheet 1.1
Cancels Original Sheet 1.1**

ACCESS SERVICES

D. RATES AND CHARGES

2. Switched Access Service (Cont'd)

(d) 8YY (Toll Free) Originating Access Services

(1) End Office Switching		(N)
<u>Local Switching</u> (per minute)		
July 1, 2021 – June 30, 2022	\$0.0267	
July 1, 2022 – June 30, 2023	\$0.01335	
After July 1, 2023	\$0.00	
<u>Information Surcharge</u> (per 100 access minutes)		
July 1, 2021 – June 30, 2022	\$0.0397	
July 1, 2022 – June 30, 2023	\$0.01985	
After July 1, 2023	\$0.00	
(2) Joint Tandem Switched Transport	**	(N)
(3) Toll Free Data Base Access	**	

**The Company concurs with the rates, terms and conditions of NECA's Tariff FCC No. 5 for this element, which can be viewed at <https://www.neca.org/member-services/tariff-5>

GENERAL EXCHANGE TARIFF

P.S.C. MO. No. 7
ORCHARD FARM TELEPHONE COMPANY
d/b/a MISSOURICOM

Section 11
Original Sheet 1.1

ACCESS SERVICES

D. RATES AND CHARGES

2. Switched Access Service (Cont'd)

(d) <u>8YY (Toll Free) Originating Access Services</u>	<u>Rate</u>	(N)
(1) Carrier Common Line (CCL)	**	 (N)
(2) End Office Switching	**	
(3) Joint Tandem Switched Transport	**	
(4) Toll Free Data Base Access	**	

**The Company concurs with the rates, terms and conditions of NECA's Tariff FCC No. 5 for this element, which can be viewed at <https://www.neca.org/member-services/tariff-5> (T)

Issued: June 15, 2021

Garrin Bott, President
101 Main Street, P.O. Box 175
New Florence, MO 63363-0175

Effective: July 1, 2021

CANCELLED
August 5, 2021
Missouri Public
Service Commission
JI-2022-0018

FILED
Missouri Public
Service Commission
JI-2021-0240

GENERAL EXCHANGE TARIFF

P.S.C. MO No. 6
ORCHARD FARM TELEPHONE COMPANY.
d/b/a TDS Telecom
Missouri

Section 11
Original Sheet 2

ACCESS SERVICES

EXCEPTIONS (Continued)

D. RATES AND CHARGES (Continued)

4 Billing and Collection Service

	<u>Rates</u>	<u>Tariff Section Reference</u>
j. Message Billed Service in which one or more messages or message service related elements are billed, per bill rendered to a customer end user account per month	\$0.58	8.2.1(G)

CANCELLED - Missouri Public Service Commission - 10/31/2022 - TN-2023-0140 - YI-2023-0074

ISSUED: February 27, 2013

EFFECTIVE: March 29, 2013

By: Joel Dohmeier, Vice-President

FILED
Missouri Public
Service Commission
JI-2013-0374