



October 1, 2021

Missouri Public Service Commission  
Governor Office Building  
200 Madison  
P.O. Box 360  
Jefferson City, MO 65102-0360

Dear Secretary:

Attached for electronic filing are revisions to the Embarras Missouri, Inc. d/b/a CenturyLink, Access Service Tariff, P.S.C. MO.-No. 26. These revisions are filed, in accordance with Missouri Public Service Commission Rules and Regulations and electronically submitted with an October 1, 2021 issue date and a proposed effective date of November 1, 2021.

This filing grandfathers certain low-bandwidth Private Line Services effective November 1, 2021. Newer technologies and services are available to customers in lieu of these technologically obsolete services. New orders and moves of existing services will be allowed to the extent permitted by existing term contracts. Existing terms will not be renewed upon expiration. Customers currently under a term commitment plan may retain their low-bandwidth services on a month-to-month basis upon expiration of their current term plan.

The list of tariff sheets reflecting the proposed revisions are provided in Attachment A following.

Should you have questions or need additional information regarding this filing, please contact me.

Sincerely,

A handwritten signature in cursive script that reads "Christina L. Chushuk".

Christina Chushuk  
Manager – Government Operations

Attachments

Pc: Office of Public Counsel (e-mail)

**CHRISTINA L. CHUSHUK**  
Tariff Manager  
Chris.Chushuk@lumen.com  
6810 W. 193<sup>rd</sup> St.  
Stilwell, KS, 66085  
voice: (913) 884-1111

MO2021-13

## Attachment A

The following tariff sheets are being revised:

Eighth Revised Page 11  
Sixth Revised Page 12  
Sixth Revised Page 281  
Fourth Revised Page 282  
Third Revised Page 291  
Third Revised Page 292  
Sixth Revised Page 264  
Sixth Revised Page 296  
Third Revised Page 299  
Second Revised Page 300  
Third Revised Page 301  
Third Revised Page 302  
Third Revised Page 303  
Second Revised Page 304  
Second Revised Page 305  
Third Revised Page 306  
Second Revised Page 307  
Third Revised Page 308  
Fourth Revised Page 310  
Fourth Revised Page 311  
Fifth Revised Page 317  
Sixth Revised Page 318  
Fourth Revised Page 318.1  
Fifth Revised Page 319  
Fourth Revised Page 320  
Sixth Revised Page 323  
Third Revised Page 327  
Third Revised Page 328  
Sixth Revised Page 329  
Fifth Revised Page 372.1  
Fourth Revised Page 372.7  
Tenth Revised Page 377  
Tenth Revised Page 378  
Eighth Revised Page 379  
Eighth Revised Page 380  
Third Revised Page 381  
Third Revised Page 382  
Third Revised Page 383  
Third Revised Page 384  
Third Revised Page 385  
Eighth Revised Page 386  
Seventh Revised Page 387  
Third Revised Page 388  
Seventh Revised Page 389  
Seventh Revised Page 390  
Thirteenth Revised Page 401  
Twelfth Revised Page 403

Eleventh Revised Page 408  
Tenth Revised Page 411  
Seventh Revised Page 417  
Fifth Revised Page 418  
Ninth Revised Page 428  
Seventh Revised Page 429  
Seventh Revised Page 430  
Seventh Revised Page 431  
Ninth Revised Page 431.3  
Eighth Revised Page 431.5  
Fourth Revised Page 431.6  
Second Revised Page 533  
Second Revised Page 534  
Third Revised Page 535  
Fourth Revised Page 536  
Third Revised Page 537  
Third Revised Page 538  
Third Revised Page 539

ACCESS SERVICE

TABLE OF CONTENTS (Cont'd)

	<u>Page No.</u>	
7.		<u>SPECIAL ACCESS SERVICE (Cont'd)</u>
7.2	294	<u>Service Descriptions</u>
7.2.1	296	Reserved For Future Use
7.2.2	298	Reserved For Future Use
7.2.3	299	Voice Grade - <b>GRANDFATHERED</b>
7.2.4		Reserved For Future Use
7.2.5		Reserved For Future Use
7.2.6	316	Reserved For Future Use
7.2.7	316	Reserved For Future Use
7.2.8	317	Digital Data - <b>GRANDFATHERED</b>
7.2.9	319	High Capacity
7.2.10	324	Clear Channel Capability
7.2.11	327	WATS Access Line (WAL) Service - <b>GRANDFATHERED</b>
7.2.12	329	Special Access Service Utilized for Connection with Switched Access Service
7.2.13	329.2	Reserved For Future Use
7.3	330	<u>Channel Interface and Network Channel Codes</u>
7.3.1	330	Glossary of Channel Interface Codes and Options
7.3.2	335	Impedance
7.3.3	336	Digital Hierarchy Channel Interface Codes (4DS)
7.3.4	336	Service Designator/Network Channel Code Conversion Table
7.3.5	339	Compatible Channel Interfaces
7.4	359	<u>Rate Regulations</u>
7.4.1	359	Type of Rates and Charges
7.4.2	362	Surcharge for Special Access Service
7.4.3	366	Reserved for Future Use
7.4.4	366	Minimum Periods
7.4.5	367	Moves
7.4.6	367	Mileage Measurement
7.4.7	368	Facility Hubs
7.4.8	371	Shared Use Digital High Capacity Services
7.4.9	372	Reserved for Future Use
7.4.10	372	Reserved for Future Use
7.4.11	372.1	Special Access Term Discount Plan

ACCESS SERVICE

TABLE OF CONTENTS (Cont'd)

	<u>Page No.</u>	
7.		<u>SPECIAL ACCESS SERVICE (Cont'd)</u>
7.5		<u>Rates and Charges</u> 373
7.5.1		Reserved For Future Use 373
7.5.2		Reserved For Future Use 375
7.5.3		Voice Grade Service - <b>GRANDFATHERED</b> 377 (C)
7.5.4		Reserved for Future Use
7.5.5		Reserved for Future Use
7.5.6		Reserved For Future Use 400
7.5.7		Reserved For Future Use 400
7.5.8		Digital Data - <b>GRANDFATHERED</b> 401 (C)
7.5.9		High Capacity 408
7.5.10		Reserved for Future Use 423
7.5.11		Reserved for Future Use 423
7.5.12		Special Access Surcharge 427
7.5.13		WATS Access Line Service - <b>GRANDFATHERED</b> 428 (C)
7.5.14		Special Access Term Discount Plan 431.1
7.6		<u>Individual Case Filings</u> 432
8.		<u>BILLING AND COLLECTION SERVICES</u> 433
8.1		<u>Recording and Message Processing Service</u> 433
8.1.1		General Description 434
8.1.2		Undertaking of the Telephone Company 436
8.1.3		Liability of the Telephone Company 442
8.1.4		Obligations of the Customer 442
8.1.5		Payment Arrangements and Audit Provision 444
8.1.6		Rate Regulations 447
8.1.7		Rates and Charges 448
8.2		<u>Billing Service</u> 456
8.2.1		Bill Processing Service 457
8.2.2		Purchase of Accounts Receivable 487

ISSUED:  
October 1, 2021

Chantel Miller  
Director Government Operations  
100 CenturyLink Dr.  
Monroe, LA 71203

EFFECTIVE:  
November 1, 2021

ACCESS SERVICE

7. Special Access Service (Cont'd)

7.1 General (Cont'd)

7.1.1 Channel Types (Cont'd)

For purposes of ordering channels, each has been identified as a type of Special Access Service. However, such identification is not intended to limit a customer's use of the channel nor to imply that the channel is limited to a particular use.

Following is a brief description of each type of channel:

**Voice Grade**<sup>[1]</sup> - A channel for the transmission of analog signals within an approximate bandwidth of 300-3000 Hz. (C)

<sup>[1]</sup> **Effective November 1, 2021 Voice Grade Services are grandfathered. Availability to current customers is limited to circuits in service at existing locations.** (N)  
(N)

ISSUED:  
October 1, 2021

Chantel Miller  
Director Government Operations  
100 CenturyLink Dr.  
Monroe, LA 71203

EFFECTIVE:  
November 1, 2021

MO2021-13

ACCESS SERVICE

7. Special Access Service (Cont'd)

7.1 General (Cont'd)

7.1.1 Channel Types (Cont'd)

**Digital Data** <sup>[1]</sup> - A channel for the digital transmission of synchronous serial data at rates of 2.4, 4.8, 9.6, 19.2, 56 or 64 kbps provided where facilities are available as determined by the Telephone Company.

(C)

High capacity - A channel for the digital transmission of isochronous serial digital data at a rate of 1.544, 3.152, 6.312, 44.736 or 274.176 Mbps provided where facilities are available as determined by the Telephone Company.

Detailed descriptions of each of the channel types are provided in 7.2 following.

The customer also has the option of ordering Voice Grade and analog and digital high capacity facilities (i.e., Group, Supergroup, Mastergroup, 1.544 Mbps, 3.152 Mbps, 6.312 Mbps, 44.736 Mbps and 274.176 Mbps) to a Telephone Company Hub for multiplexing to individual channels of a lower capacity or bandwidth. Descriptions of the types of multiplexing are available at the Hubs, as well as the number of individual channels which may be derived from each type of facility are set forth in 7.2 following. Additionally, the customer may specify optional features for the individual channels derived from the facility to further tailor the channel to meet specific communications requirements. Descriptions of the optional features and functions available are also set forth in 7.2 following.

**<sup>[1]</sup> Effective November 1, 2021 Digital Data Services are grandfathered. Availability to current customers is limited to circuits in service at existing locations.**

(N)  
(N)

ISSUED:  
October 1, 2021

Chantel Miller  
Director Government Operations  
100 CenturyLink Dr.  
Monroe, LA 71203

EFFECTIVE:  
November 1, 2021

MO2021-13

ACCESS SERVICE

7. Special Access Service (Cont'd)

7.1 General (Cont'd)

7.1.3 Service Configurations (Cont'd)

(B) Multipoint Service (Cont'd)

Applicable Rate Elements are:

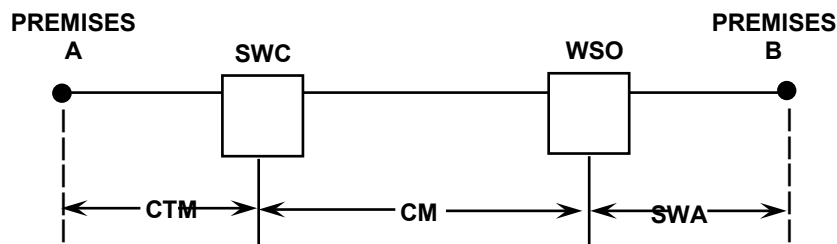
- Channel Terminations (4 applicable)
- Channel Mileage (5 sections, each from appropriate mileage band)
- Bridging (0.6 applicable, i.e., each bridge port)

(C) WATS Access Line Service <sup>[1]</sup>

(C)

WATS Access Line (WAL) provides a Voice Grade Channel Termination and Channel Mileage, where appropriate, between the End User premises and the WATS serving office and is used in conjunction with Switched Access Service as set forth in Paragraph 6.2.5, preceding.

The following diagram depicts a WATS Access Line service connecting a customer designated premises to the WATS serving office. The customer's serving wire center and the WATS serving office are located 10 miles apart.



- CTM - Channel Termination
- CM - Channel Mileage
- SWC - Serving Wire Center
- WSO - WATS Serving Office
- SWA - Switched Access

<sup>[1]</sup> Effective November 1, 2021 WATS Access Line Services are grandfathered. Availability to current customers is limited to circuits in service at existing locations.

(N)  
(N)

ACCESS SERVICE

7. Special Access Service (Cont'd)

7.1 General (Cont'd)

7.1.3 Service Configurations (Cont'd)

(C) **WATS Access Line Service**<sup>[1]</sup> (Cont'd)

(C)

Applicable rate elements for the WATS Access Line are:

- Channel Termination (1 Applicable)
- Channel Mileage (mileage band over 8 to 25 miles)
- Optional Features and Functions (when applicable)

In addition, a Special Access Surcharge, as set forth in 7.4.2, following may be applicable.

7.1.4 Alternate Use

Alternate Use occurs when a service is arranged by the Telephone Company so that the customer can select different types of transmission at different times. A customer may use a service in any privately beneficial manner. However, where technical or engineering changes are required to effectuate an alternate use, the Telephone Company will make such special arrangements available on an individual case basis.

The arrangement required to transfer the service from one operation to the other (i.e., the transfer relay and control leads) will be rated and provided on an individual case basis and filed in Section 12. Specialized Service or Arrangements. The customer will pay the stated tariff rates for the Access Service rate elements for the service ordered (i.e., Channel Terminations, Channel Mileage [as applicable] and Optional Features [if any]).

7.1.5 Special Facilities Routing

A customer may request that the facilities used to provide Special Access Service be specially routed. The regulations, Rates and Charges for Special Facilities Routing (i.e., Avoidance, Diversity and Cable-Only) are set forth in 11. following.

**<sup>[1]</sup> Effective November 1, 2021 WATS Access Line Services are grandfathered. Availability to current customers is limited to circuits in service at existing locations.**

(N)

(N)

ISSUED:  
October 1, 2021

Chantel Miller  
Director Government Operations  
100 CenturyLink Dr.  
Monroe, LA 71203

EFFECTIVE:  
November 1, 2021

MO2021-13



## ACCESS SERVICE

### 7. Special Access Service (Cont'd)

#### 7.1 General (Cont'd)

##### 7.1.8 Ordering Options and Conditions

Special Access Service is ordered under the Access Order provisions set forth in 5. preceding. Also included in that section are other charges which may be associated with ordering Special Access Service (e.g., Service Date Change Charges, Cancellation Charges, etc.).

#### 7.2 Service Descriptions

For the purposes of ordering, there are five categories of Special Access Service. These are:

**Voice Grade** <sup>[1]</sup> (VG)

(C)

**Digital Data** <sup>[1]</sup> (DA)

(C)

High Capacity (HC)

Each service consists of a basic channel to which a technical specifications package (customized or predefined), channel interface(s) and, when desired, optional features and functions are added to construct the service desired by the customer. Each of the components of the service is described in this section.

Customized technical specifications packages will be provided where technically feasible. If the Telephone Company determines that the requested parameter specifications are not compatible, the customer will be advised and given the opportunity to change the order.

When a customized channel is ordered the customer will be notified whether Additional Engineering Charges apply. In such cases, the customer will be given an estimate of the hours to be billed before any further action is taken on the order.

**[1] Effective November 1, 2021 Voice Grade and Digital Data Services are grandfathered. Availability to current customers is limited to circuits in service at existing locations.**

(N)

(N)

ISSUED:  
October 1, 2021

Chantel Miller  
Director Government Operations  
100 CenturyLink Dr.  
Monroe, LA 71203

EFFECTIVE:  
November 1, 2021

ACCESS SERVICE

7. Special Access Service (Cont'd)

7.2 Service Descriptions (Cont'd)

The optional features and functions available with each type of Special Access Service are described in this section. The optional features and functions information also indicates with which technical specifications packages they are available. Such information is displayed in a matrix with the optional feature or function listed down the left side and the technical specifications package listed across the top.

The Telephone Company will maintain existing transmission specifications on services installed prior to the effective date of this tariff, except that the existing services with performance specifications exceeding the standard listed in this provision will be maintained at the performance levels specified in this tariff. All services installed after the effective date of this tariff will conform to the transmission specification standards contained in this tariff or in the following Technical Reference for each category of service:

<b>Voice Grade</b> <sup>[1]</sup>	GR-3334 TR-NWT-000335 MDP-326-584	(C)
<b>Digital Data</b> <sup>[1]</sup>	TR-NWT-000341 and MDP-326-726	(C)
High Capacity	GR-342 GR-54	

7.2.1 Reserved for Future Use

<sup>[1]</sup> **Effective November 1, 2021 Voice Grade and Digital Data Services are grandfathered. Availability to current customers is limited to circuits in service at existing locations.** (N)  
(N)

ACCESS SERVICE

7. Special Access Service (Cont'd)

7.2 Service Descriptions (Cont'd)

7.2.2 Reserved for Future Use (Cont'd)

7.2.3 **Voice Grade Service** <sup>[1]</sup>

(C)

(A) Basic Channel Description

A Voice Grade channel is a channel which provides voice frequency transmission capability in the nominal frequency range of 300 to 3000 Hz and may be terminated two-wire or four-wire. Voice Grade channels are provided between customer designated premises or between a customer designated premises and a Telephone Hub.

<sup>[1]</sup> **Effective November 1, 2021 Voice Grade and Digital Data Services are grandfathered. Availability to current customers is limited to circuits in service at existing locations.**

(N)  
(N)

ISSUED:  
October 1, 2021

Chantel Miller  
Director Government Operations  
100 CenturyLink Dr.  
Monroe, LA 71203

EFFECTIVE:  
November 1, 2021

ACCESS SERVICE

7. Special Access Service (Cont'd)

7.2 Service Descriptions (Cont'd)

7.2.2 Voice Grade Service <sup>[1]</sup> (Cont'd)

(C)

(B) Technical Specifications Packages (Cont'd)

Parameter	Package VG-												
	C*	1	2	3	4	5	6	7	8	9	10	11	12
Attenuation													
Distortion	X	X	X	X	X	X	X	X	X	X	X	X	X
C-Message Noise	X	X	X	X	X	X	X	X	X	X	X	X	X
Echo Control	X	X	X	X		X		X	X			X	X
Envelope Delay													
Distortion	X						X	X	X	X	X	X	X
Frequency Shift	X						X	X	X	X	X	X	X
Impulse Noise	X					X	X	X	X	X	X	X	X
Intermodulation													
Distortion	X						X	X	X	X	X	X	
Loss Deviation	X	X	X	X	X	X	X	X	X	X	X	X	X
Phase Hits, Gain													
Hits, and													
Dropouts	X												
Phase Jitter	X						X	X	X	X	X	X	
Signal-to-C													
Message Noise					X								
Signal-to-C													
Notch Noise	X					X	X	X	X	X	X	X	X

\* The desired parameters are selected by the customer from the list of available parameters.

<sup>[1]</sup> **Effective November 1, 2021 Voice Grade Services are grandfathered. Availability to current customers is limited to circuits in service at existing locations.**

(N)  
(N)

ISSUED:  
October 1, 2021

Chantel Miller  
Director Government Operations  
100 CenturyLink Dr.  
Monroe, LA 71203

EFFECTIVE:  
November 1, 2021

ACCESS SERVICE

7. Special Access Service (Cont'd)

7.2 Service Descriptions (Cont'd)

7.2.3 **Voice Grade Service** <sup>[1]</sup> (Cont'd)

(C)

(B) Technical Specifications Packages (Cont'd)

The technical specifications for these parameters (except for dropouts, gain hits, and phase hits) are delineated in Technical Reference Publication TR-NWT-000335. The technical specifications for dropouts, phase hits, and gain hits are delineated in Technical Reference Publication MDP-326-584.

(C) Channel Interfaces

The following channel interfaces for Voice Grade service do not require signaling capability: AH, DA, DB, DD, DE, DS, NO, PR and TF.

The following channel interfaces for Voice Grade service require signaling capability: AB, AC, CT, DX, DY, EA, EB, EC, EX, GO, GS, LA, LB, LC, LO, LR, LS, RV and SF.

Compatible channel interfaces are set forth in 7.3.5(C) following.

<sup>[1]</sup> **Effective November 1, 2021 Voice Grade Services are grandfathered. Availability to current customers is limited to circuits in service at existing locations.**

(N)  
(N)

ISSUED:  
October 1, 2021

Chantel Miller  
Director Government Operations  
100 CenturyLink Dr.  
Monroe, LA 71203

EFFECTIVE:  
November 1, 2021

MO2021-13

ACCESS SERVICE

7. Special Access Service (Cont'd)

7.2 Service Descriptions (Cont'd)

7.2.3 **Voice Grade Service** <sup>[1]</sup> (Cont'd)

(C)

(D) Optional Features and Functions

(1) Central Office Bridging Capability

- (a) Voice Bridging (two-wire or four-wire)
- (b) Data Bridging (two-wire or four-wire)
- (c) Telephoto Bridging (two-wire or four-wire)
- (d) DATAPHONE Select-A-Station bridging with sequential arrangement ports or addressable arrangement ports
- (e) Telemetry and Alarm Bridging
  - Split Band, Active Bridging
  - Passive Bridging
  - Summation, active Bridging

(2) Reserved for Future Use

**<sup>[1]</sup> Effective November 1, 2021 Voice Grade Services are grandfathered. Availability to current customers is limited to circuits in service at existing locations.**

(N)

(N)

ISSUED:  
October 1, 2021

Chantel Miller  
Director Government Operations  
100 CenturyLink Dr.  
Monroe, LA 71203

EFFECTIVE:  
November 1, 2021

ACCESS SERVICE

7. Special Access Service (Cont'd)

7.2 Service Descriptions (Cont'd)

7.2.3 **Voice Grade Service** <sup>[1]</sup> (Cont'd)

(C)

(D) Optional Features and Functions (Cont'd)

(3) Conditioning

Conditioning provides more specific transmission characteristics for Voice Grade services.

More stringent specifications than those provided with C-Type conditioning are available separately for attenuation distortion and envelope delay distortion. The customer has the option of ordering Improved Attenuation Distortion and/or Improved Envelope Delay Distortion in lieu of C-Type conditioning.

For two-point services, the parameters apply to each service. For multipoint services, the parameters apply to each mid link or end link. C-Type conditioning and Data Capability may be combined on the same service.

**<sup>[1]</sup> Effective November 1, 2021 Voice Grade Services are grandfathered. Availability to current customers is limited to circuits in service at existing locations.**

(N)

(N)

ISSUED:  
October 1, 2021

Chantel Miller  
Director Government Operations  
100 CenturyLink Dr.  
Monroe, LA 71203

EFFECTIVE:  
November 1, 2021

MO2021-13

ACCESS SERVICE

7. Special Access Service (Cont'd)

7.2 Service Descriptions (Cont'd)

7.2.3 **Voice Grade Service** <sup>[1]</sup> (Cont'd)

(C)

(D) Optional Features and Functions (Cont'd)

(3) Conditioning (Cont'd)

(500) C-Type Conditioning

C-Type Conditioning is provided for the additional control of attenuation distortion and envelope delay distortion on data services. The attenuation distortion and envelope delay distortion specifications for C-Type Conditioning are:

<u>Attenuation Distortion (Frequency Response) Relative to 1004 Hz</u>	
<u>Frequency Range (Hz)</u>	<u>Variation (db)</u>
400-2800	-1.0 to +2.0
300-3000	-1.0 to +3.0
3000-3200	-2.0 to +6.0
<u>Envelope Delay Distortion</u>	
<u>Frequency Range (Hz)</u>	<u>Variation (micro- seconds)</u>
1000-2600	100
800-2600	200
600-2600	300
500-2800	600
500-3000	3000

<sup>[1]</sup> **Effective November 1, 2021 Voice Grade Services are grandfathered. Availability to current customers is limited to circuits in service at existing locations.**

(N)  
(N)



ACCESS SERVICE

7. Special Access Service (Cont'd)

7.2 Service Descriptions (Cont'd)

7.2.3 **Voice Grade Service** <sup>[1]</sup> (Cont'd)

(C)

(D) Optional Features and Functions (Cont'd)

(3) Conditioning (Cont'd)

(b) Reserved for Future Use

© Sealing Current Conditioning

Sealing Current Conditioning is provided to maintain continuity on dry metallic loops. It is usually associated with four-wire DA and NO type channel interfaces.

<sup>[1]</sup> **Effective November 1, 2021 Voice Grade Services are grandfathered. Availability to current customers is limited to circuits in service at existing locations.**

(N)

(N)

ISSUED:  
October 1, 2021

Chantel Miller  
Director Government Operations  
100 CenturyLink Dr.  
Monroe, LA 71203

EFFECTIVE:  
November 1, 2021

ACCESS SERVICE

7. Special Access Service (Cont'd)

7.2 Service Descriptions (Cont'd)

7.2.3 **Voice Grade Service** <sup>[1]</sup> (Cont'd)

(C)

(D) Optional Features and Functions (Cont'd)

(4) Customer Specified Premises Receive Level

This option allows the customer to specify the receive level at the Point of Termination. This level must be within a specific range on effective four-wire transmission. The ranges are delineated in Technical Reference Publication TR-NWT-000335.

(5) Improved Return Loss

(a) On Effective Four-Wire Transmission at Four-Wire Point of Termination (applicable to each two-wire port): Provides for a fixed 600 ohm impedance, variable level range and simplex reversal. Telephone Company equipment is required at the customer's premises where this option is ordered. The Improved Return Loss parameters are delineated in Technical Reference Publication TR-NWT-000335.

(b) On Effective Two-Wire Transmission at Two-Wire Point of Termination: Provides for more stringent Echo Control Specifications. In order for this option to be applicable, the transmission path must be four-wire at one POT and two-wire at the other POT. Placement of Telephone Company equipment may be required at the customer's premises with the two-wire POT. The Improved Return Loss parameters are delineated in Technical Reference Publication TR-NWT-000335.

<sup>[1]</sup> **Effective November 1, 2021 Voice Grade Services are grandfathered. Availability to current customers is limited to circuits in service at existing locations.**

(N)

(N)

ISSUED:  
October 1, 2021

Chantel Miller  
Director Government Operations  
100 CenturyLink Dr.  
Monroe, LA 71203

EFFECTIVE:  
November 1, 2021

ACCESS SERVICE

7. Special Access Service (Cont'd)

7.2 Service Descriptions (Cont'd)

7.2.3 **Voice Grade Service** <sup>[1]</sup> (Cont'd)

(C)

(D) Optional Features and Functions (Cont'd)

(6) Data Capability

Data Capability provides transmission characteristics suitable for data communications. Specifically, Data Capability provides for the control of Signal to C-Notched Noise Ratio and intermodulation distortion. It is available for two-point services or multipoint services.

The Signal to C-Notched Noise Ratio and inter-modulation distortion parameters for Data Capability are:

- Signal to C-Notched Noise Ratio is equal to or greater than 32dB
- Intermodulation distortion:
  - Signal to second order modulation products (R2) is equal to or greater than 38dB
  - Signal to third order modulation products (R3) is equal to or greater than 42dB

When a service equipped with Data Capability is used for voice communications, the quality of the voice transmission may not be satisfactory.

**<sup>[1]</sup> Effective November 1, 2021 Voice Grade Services are grandfathered. Availability to current customers is limited to circuits in service at existing locations.**

(N)

(N)

ISSUED:  
October 1, 2021

Chantel Miller  
Director Government Operations  
100 CenturyLink Dr.  
Monroe, LA 71203

EFFECTIVE:  
November 1, 2021

ACCESS SERVICE

7. Special Access Service (Cont'd)

7.2 Service Descriptions (Cont'd)

7.2.3 **Voice Grade Service**<sup>[1]</sup> (Cont'd)

(C)

(D) Optional Features and Functions (Cont'd)

(7) Telephoto Capability

Telephoto Capability provides transmission characteristics suitable for telephotographic communications. Specifically, Telephoto Capability is provided for the control of attenuation distortion and envelope delay distortion on telephotographic services. The attenuation distortion and envelope delay distortion parameters for Telephoto Capability are:

Attenuation Distortion  
(1004 Hz Reference)

Frequency Range (Hz)	Variation (dB)
500-3000	-0.5 to +1.5
300-3200	-1.0 to +2.5

Envelope Delay Distortion

Frequency Range (Hz)	Variation (mcs)
1000-2600	110
800-2800	180

(8) Signaling Capability

Signaling Capability provides for the process by which one customer premises alerts another customer premises on the same service with which it wishes to communicate.

(9) Reserved for Future Use

<sup>[1]</sup> **Effective November 1, 2021 Voice Grade Services are grandfathered. Availability to current customers is limited to circuits in service at existing locations.**

(N)

(N)

ACCESS SERVICE

7. Special Access Service (Cont'd)

7.2 Service Descriptions (Cont'd)

7.2.3 Voice Grade Service <sup>[1]</sup> (Cont'd)

(C)

(D) Optional Features and Functions (Cont'd)

The following table shows the technical specifications packages with which the optional features and functions are available.

	Available with Technical Specifications Package VG-												
	C	1	2	3	4	5	6	7	8	9	10	11	12
C-Type Conditioning Central Office Bridging Capability	X					X	X	X	X	X	X		
Central Office Multiplexing	X		X			X	X				X	X	X
Customer Specified Premises Receive Level	X		X	X				X	X	X			
Data Capability Improved Return Loss: For Effective Four-Wire Transmission	X						X	X			X		
For Effective Two-Wire Transmission	X	X	X	X	X	X	X	X	X	X	X	X	X
Sealing Current Conditioning Signaling Capability	X			X	X				X				
Telephoto Capability	X							X	X	X			
												X	

<sup>[1]</sup> **Effective November 1, 2021 Voice Grade Services are grandfathered. Availability to current customers is limited to circuits in service at existing locations.**

(N)  
(N)

ACCESS SERVICE

7. Special Access Service (Cont'd)

7.2 Service Descriptions (Cont'd)

7.2.3 **Voice Grade Service** <sup>[1]</sup> (Cont'd)

(C)

(E) Four-Wire/Two-Wire Conversions

When a customer requests that an effective four-wire channel be terminated with a two-wire channel interface at the customer designated premises, a four-wire to two-wire conversion is required. The rate for the conversion is included as part of the basic Channel Termination rate.

7.2.4 Reserved for Future Use

<sup>[1]</sup> **Effective November 1, 2021 Voice Grade Services are grandfathered. Availability to current customers is limited to circuits in service at existing locations.**

(N)  
(N)

ISSUED:  
October 1, 2021

Chantel Miller  
Director Government Operations  
100 CenturyLink Dr.  
Monroe, LA 71203

EFFECTIVE:  
November 1, 2021

MO2021-13

ACCESS SERVICE

7. Special Access Service (Cont'd)

7.2 Service Descriptions (Cont'd)

7.2.8 **Digital Data Service** <sup>[1]</sup>

(C)

(A) Basic Channel Description

A Digital Data channel is a channel for duplex four-wire transmission of synchronous serial data at the rate of 2.4, 4.8, 9.6, 19.2, 56 or 64 kbps. The actual bit rate is a function of the channel interface selected by the customer. The channel provides a synchronous service with timing provided by the Telephone Company through the Telephone Company's facilities to the customer in the received bit stream. Digital Data channels are provided between customer designated premises or between a customer designated premises and a Telephone Company Hub where appropriate digital facilities are available as determined by the Telephone Company.

A Digital Service Unit/Channel Service Unit (DSU/CSU) or appropriate digital terminating equipment provided by the customer is required at the customer's premise to provide the proper interface between the Telephone Company network and the customer's equipment. The interim program for interconnection of such equipment is set forth in Technical Reference Publication PUB AS No. 1.

(B) Technical Specifications Packages

<u>Parameter</u>	<u>Package DA-</u>			
	<u>1</u>	<u>2</u>	<u>3</u>	<u>4</u>
Error-Free Seconds	X	X	X	X

The Telephone Company will provide a channel capable of meeting a monthly average performance equal to or greater than 99.875% error-free seconds while the channel is in service, if it is measured through a CSU equivalent which is designed, manufactured, and maintained to conform with the specifications contained in Technical Reference Publication MDP-326-726.

<sup>[1]</sup> **Effective November 1, 2021 Digital Data Services are grandfathered. Availability to current customers is limited to circuits in service at existing locations.**

(N)

(N)

ACCESS SERVICE

7. Special Access Service (Cont'd)

7.2 Service Descriptions (Cont'd)

7.2.8 **Digital Data Service**<sup>[1]</sup> (Cont'd)

(C)

(C) Channel Interfaces

The following channel interfaces (CIs) define the bit rates that are available for a Digital Data channel:

<u>CI</u>	<u>Bit Rate</u>
DU-24	2.4 Kbps
DU-48	4.8 Kbps
DU-96	9.6 Kbps
DU-19	19.2 Kbps
DU-56	56.0 Kbps
DU-64	64.0 Kbps

Compatible channel interfaces are set forth in 7.3.5(H) following.

(D) Optional Features and Functions

(1) Central Office Bridging Capability

Provides for the parallel connection of one virtual circuit to another virtual circuit without interrupting the integrity or continuity of the first. This service is only available from a company-designated digital hub.

<sup>[1]</sup> **Effective November 1, 2021 Digital Data Services are grandfathered. Availability to current customers is limited to circuits in service at existing locations.**

(N)  
(N)

ISSUED:  
October 1, 2021

Chantel Miller  
Director Government Operations  
100 CenturyLink Dr.  
Monroe, LA 71203

EFFECTIVE:  
November 1, 2021

MO2021-13



ACCESS SERVICE

7. Special Access Service (Cont'd)

7.2 Service Descriptions (Cont'd)

7.2.8 **Digital Data Service**<sup>[1]</sup> (Cont'd)

(C)

(D) Optional Features and Functions (Cont'd)

(2) Data Amplification

Provides for data transmission when the customer is located beyond the normal range of 42 decibel (dB) loss for digital data service (56.0 kbps and 64.0 kbps). The dB loss is determined by the route and length of the cable in addition to the gauge of the cable from the last signaling point (usually, but not always the switching office) to the customer's premise. When the dB loss is greater than 42, a repeater and associated equipment must be installed to regenerate the digital signal for accurate and acceptable data transmission to occur.

**<sup>[1]</sup> Effective November 1, 2021 Digital Data Services are grandfathered. Availability to current customers is limited to circuits in service at existing locations.**

(N)  
(N)

ISSUED:  
October 1, 2021

Chantel Miller  
Director Government Operations  
100 CenturyLink Dr.  
Monroe, LA 71203

EFFECTIVE:  
November 1, 2021

ACCESS SERVICE

7. Special Access Service (Cont'd)

7.2 Service Descriptions (Cont'd)

7.2.8 **Digital Data Service** <sup>[1]</sup> (Cont'd)

(C)

(D) Optional Features and Functions (Cont'd)

The following table shows the technical specifications packages with which the optional features and functions are available.

	Available with Technical Specifications Package DA-			
	<u>1</u>	<u>2</u>	<u>3</u>	<u>4</u>
Central Office Bridging Capability	X	X	X	X
Data Amplification				X

7.2.9 High Capacity Service

(A) Basic Channel Description

A High Capacity channel is a channel for the transmission of nominal 1.544, 3.152, 6.312, 44.736, and 274.176 Mbps isochronous serial data. The actual bit rate and framing format is a function of the channel interface selected by the customer. High Capacity channels are provided between customer designated premises or between a customer designated premises and a Telephone Company Hub, where appropriate digital facilities are available as determined by the Telephone Company.

The customer must furnish the Digital Network Channel Terminating Equipment associated with the High Capacity channel at the customer's premises. The interim program for interconnection of such equipment is set forth in Technical Reference Publication PUB AS No. 1.

<sup>[1]</sup> **Effective November 1, 2021 Digital Data Services are grandfathered. Availability to current customers is limited to circuits in service at existing locations.**

(N)  
(N)

ACCESS SERVICE

7. Special Access Service (Cont'd)

7.2 Service Descriptions (Cont'd)

7.2.9 High Capacity Service (Cont'd)

(A) Basic Channel Description (Cont'd)

**Fractional DS1 channels** <sup>[1]</sup> provide simultaneous, two-way transmission at contiguous bit rates of 128.0, 256.0 and 384.0 kbps. Fractional DS1 channels operate over the combined bandwidth of adjacent channels to create a contiguous bit rate. Due to technical limitations associated with the provision of Fractional DS1, this service will be offered only in end offices where a compatible channel bank exists and the distance between the central office and the customer designated premises is less than or equal to 12,000 feet.

(C)

(B) Technical Specifications Packages

<u>Parameter</u>	<u>Package HC-</u>					
	<u>0</u>	<u>1</u>	<u>IC</u>	<u>2</u>	<u>3</u>	<u>4</u>
Error-Free Seconds	X	X				

A channel with technical specifications package HC1 will be capable of error-free second performance of 98.75% over a continuous 24 hour period as measured at the 1.544 Mbps rate through a CSU equivalent which is designed, manufactured, and maintained to conform with the specifications contained in Technical Reference Publication GR-54.

(C) Channel Interfaces

The following channel interface (CIs) defined the bit rates that are available for a High Capacity channel:

<u>CI</u>	<u>Bit Rate</u>
DS-15	1.544 Mbps (DS1)
DS-31	3.152 Mbps (DS1C)
DS-44	44.736 Mbps (DS3)

Compatible channel interfaces are set forth in 7.3.5(I) following.

<sup>[1]</sup> **Effective November 1, 2021 Fractional DS1 Services are grandfathered. Availability to current customers is limited to circuits in service at existing locations.**

(N)  
(N)

ACCESS SERVICE

7. Special Access Service (Cont'd)

7.2 Service Descriptions (Cont'd)

7.2.9 High Capacity Service (Cont'd)

(D) Optional Features and Functions (Cont'd)

(2) Central Office Multiplexing (Cont'd)

(c) **DS1 to Voice**<sup>[1]</sup> (C)

An arrangement that converts a 1.544 Mbps channel to 24 channels for use with Voice Grade Services. A channel(s) of this DS1 to the Hub can also be used for a Digital Data, or WATS Access Line Service.

(d) **DS1 to DS0**<sup>[1]</sup> (C)

An arrangement that converts a 1.544 Mbps channel to twenty-four 64.0 Kbps channels utilizing digital time division multiplexing.

<sup>[1]</sup> **Effective November 1, 2021 Voice Grade and Digital Data Services are grandfathered. Availability to current customers is limited to circuits in service at existing locations.** (N)  
(N)  
(N)

ACCESS SERVICE

7. Special Access Service (Cont'd)

7.2 Service Descriptions (Cont'd)

7.2.11 **WATS Access Line (WAL) Service** <sup>[1]</sup>

(C)

(A) Basic Channel Description

A WATS Access Line Service provides a channel for voice frequency transmission capability. The service provides a connection between a customer designated premises and a WATS serving office associated with the closed end of TFC Service, WATS or similar service. It is provided only for use with Feature Group C or D Switched Access Service as set forth in Section 6 preceding.

WAL Service is arranged for either originating calling only or terminating calling only. It is provided with either rotary dial or dual tone multifrequency address signaling and either loop start, ground start, E&M, or reverse battery supervisory signaling. The choice of the type of signaling is at the option of the customer

**<sup>[1]</sup> Effective November 1, 2021 WATS Access Line Services are grandfathered. Availability to current customers is limited to circuits in service at existing locations.**

(N)

(N)

ISSUED:  
October 1, 2021

Chantel Miller  
Director Government Operations  
100 CenturyLink Dr.  
Monroe, LA 71203

EFFECTIVE:  
November 1, 2021

ACCESS SERVICE

7. Special Access Service (Cont'd)

7.2 Service Descriptions (Cont'd)

7.2.11 **WATS Access Line (WAL) Service** <sup>[1]</sup> (Cont'd)

(C)

(A) Basic Channel Description (Cont'd)

Subject to the technical limitations identified in the Technical Publication GR-3334. WATS Access Line Service is provided as an effective two-wire, an effective four-wire or a DS1 (i.e., 1.544 Mbps) transmission path.

(B) Technical Specification Packages

<u>Parameters</u>	<u>Packages WAL</u>		
	<u>1</u>	<u>2</u>	<u>3</u>
Attenuation Distortion	X	X	
Bit error rate			X
C-Message Noise	X	X	
Echo Control	X	X	
Envelop Delay Distortion	X	X	
Frequency Shift	X	X	
Impulse Noise	X	X	
Intermodulation Distortion	X	X	
Loss Deviation	X	X	
Phase Jitter	X	X	
Signal-to-C	X	X	
Notch Noise			

(C) Channel Interfaces

The following interfaces are available with WAL Service:

LO, LS, DS, GO, GS RV, EA, EB, SF

Compatible channel interfaces are set forth in 7.3.5.(J)

<sup>[1]</sup> **Effective November 1, 2021 WATS Access Line Services are grandfathered. Availability to current customers is limited to circuits in service at existing locations.**

(N)

(N)

ACCESS SERVICE

7. Special Access Service (Cont'd)

7.2 Service Descriptions (Cont'd)

7.2.11 WATS Access Line (WAL) Service <sup>[1]</sup> (Cont'd)

(C)

(D) Optional Features and Functions

- (1) Two-wire and four wire Central office bridging capability.
- (2) Improved two-wire and four-wire voice transmission specifications.
- (3) Signaling Capability
- (4) Certain other options associated with WAL services are available as Local Switching optional features as defined in Section 6 preceding.

7.2.12 Special Access Service Utilized for Connection with Switched Access Service

(A) Basic Service Description

A special access service utilized for connection with a switched access service implemented as a voice grade dedicated communications path between the customer's end user and a WATS Serving Office (WSO) equipped with Feature Groups A, B, C or D service, together, form the functional parts that are the major building blocks of the WATS\* service. Switched access optional arrangements are available as set forth in Section 6.3. Both of these functional elements are necessary to provide service from the customer's end user to the customer's designated premises.

\* Use of the Terms "WATS" and/or "WATS like" is descriptive only and is not intended to restrict provision of a WSAC to a specific type of service.

**[1] Effective November 1, 2021 WATS Access Line Services are grandfathered. Availability to current customers is limited to circuits in service at existing locations.**

(N)

(N)

ACCESS SERVICE

7. Special Access Service (Cont'd)

7.4 Rate Regulations (Cont'd)

7.4.11 Special Access Term Discount Plan <sup>[1]</sup>

(C)

(A) General

The Special Access Term Discount Plan (TDP) applies to Special Access Digital Data Service (56.0 and 64.0 kbps), High Capacity DS1(1.544 Mbps) Service and DS1 to DS0 Multiplexing. The TDP provides the customer with discounted rates for the services listed. The customer agrees to a minimum service commitment per service when the TDP is established.

In order for a circuit to be eligible for TDP pricing, the customer must commit a channel termination and/or multiplexer associated with that circuit to a TDP. The commitment level for a circuit will be based on channel terminations and/or multiplexers. Customers may disconnect or move channel terminations and/or multiplexers within the state and not be subject to termination liability charges as long as the commitment levels are maintained.

(B) Commitment Level

All eligible special access rate elements for a given circuit (channel termination, channel mileage termination (fixed), channel mileage facility (per mile), or multiplexing) must be ordered for the same commitment period with the same service date for the same customer. A customer establishes a TDP by committing all or a portion of their in-service channel terminations and/or multiplexers to a minimum term of 3 years, up to a maximum term of 5 years. During the term of the selected TDP, the customer must maintain an in-service commitment threshold of not less than 90% nor more than 130% of the committed channel terminations and/or multiplexers.

<sup>[1]</sup> **Effective November 1, 2021 Digital Data Services are grandfathered. Availability to current customers is limited to circuits in service at existing locations. Customers will not be able to renew the Digital Data Circuits upon expiration of the term.**

(N)  
|  
(N)



ACCESS SERVICE

7. Special Access Service (Cont'd)

7.4 Rate Regulations (Cont'd)

7.4.11 Special Access Term Discount Plan (Cont'd)

(K) **Renewal of a TDP** <sup>[1]</sup>

(C)

At the end of the TDP service commitment period, the customer may subscribe to a new TDP at the prevailing rates set forth in Section 7.5.14 following. If the customer does not select a new TDP, the rates will convert to the prevailing month-to-month Digital Data or DS1 rates set forth in Section 7.5.8 and 7.5.9 following. The customer will have a 90 day grace period to renew their TDP before month-to-month rates will be assessed.

(L) **Cancellation Charges**

When a customer cancels an order for Special Access Services being provided under a TDP, cancellation charges, as set forth in 5.2.3 preceding, will be calculated using the nonrecurring charges associated with the month-to month rates for the service being cancelled.

<sup>[1]</sup> **Effective November 1, 2021 Digital Data Services are grandfathered. Availability to current customers is limited to circuits in service at existing locations. Customers will not be able to renew the Digital Data Circuits upon expiration of the term.**

(N)  
|  
(N)

ACCESS SERVICE

7. Special Access Service (Cont'd)

7.5 Rates and Charges (Cont'd)

7.5.3 **Voice Grade Service** <sup>[1]</sup>

(C)

	<u>Monthly Rates</u>	<u>Nonrecurring Charges</u>
(A) <u>Channel Termination</u>		
- Per point of termination		
- Two-wire	\$26.70 (I)	\$220.00 (I)
- Four-Wire	\$42.40 (I)	\$220.00 (I)
(B) <u>Reserved for Future Use</u>		
(C) <u>Reserved for Future Use</u>		

<sup>[1]</sup> **Effective November 1, 2021 Voice Grade Services are grandfathered. Availability to current customers is limited to circuits in service at existing locations.**

(N)  
(N)

ISSUED:  
October 1, 2021

Chantel Miller  
Director Government Operations  
100 CenturyLink Dr.  
Monroe, LA 71203

EFFECTIVE:  
November 1, 2021

MO2021-13

ACCESS SERVICE

7. Special Access Service (Cont'd)

7.5 Rates and Charges (Cont'd)

7.5.3 **Voice Grade Service** <sup>[1]</sup> (Cont'd)

(C)

(D) Channel Mileage

<u>Monthly Rates</u>	
<u>Fixed</u>	<u>Per Mile</u>
\$20.80*	\$1.60

\* The Telephone Company applies a 50% billing percentage to the channel mileage fixed rate on jointly owned voice grade circuits and 100% on wholly owned voice grade circuits.

**<sup>[1]</sup> Effective November 1, 2021 Voice Grade Services are grandfathered. Availability to current customers is limited to circuits in service at existing locations.**

(N)  
(N)

ISSUED:  
October 1, 2021

Chantel Miller  
Director Government Operations  
100 CenturyLink Dr.  
Monroe, LA 71203

EFFECTIVE:  
November 1, 2021

ACCESS SERVICE

7. Special Access Service (Cont'd)

7.5 Rates and Charges (Cont'd)

7.5.3 Voice Grade Service <sup>[1]</sup> (Cont'd)

(C)

	<u>Monthly Rates</u>	<u>Nonrecurring Charges</u>
--	--------------------------	---------------------------------

(E) Optional Features and Functions

(1) Bridging

(a) Voice Bridging

Two-Wire/Four-Wire

- Per port		
- Two-Wire	ICB	ICB
- Four-Wire	\$5.90	\$50.00

<sup>[1]</sup> **Effective November 1, 2021 Voice Grade Services are grandfathered. Availability to current customers is limited to circuits in service at existing locations.**

(N)  
(N)

ISSUED:  
October 1, 2021

Chantel Miller  
Director Government Operations  
100 CenturyLink Dr.  
Monroe, LA 71203

EFFECTIVE:  
November 1, 2021

ACCESS SERVICE

7. Special Access Service (Cont'd)

7.5 Rates and Charges (Cont'd)

7.5.3 **Voice Grade Service** <sup>[1]</sup> (Cont'd)

(C)

	<u>Monthly Rates</u>	<u>Nonrecurring Charges</u>
--	--------------------------	---------------------------------

(E) Optional Features and Functions (Cont'd)

(1) Bridging (Cont'd)

(b) Data Bridging

Two-Wire/Four-Wire

- Per port		
- Two-Wire	\$3.50 (I)	\$50.00 (I)
- Four-Wire	\$4.80 (I)	\$50.00 (I)

<sup>[1]</sup> **Effective November 1, 2021 Voice Grade Services are grandfathered. Availability to current customers is limited to circuits in service at existing locations.**

(N)

(N)

ISSUED:  
October 1, 2021

Chantel Miller  
Director Government Operations  
100 CenturyLink Dr.  
Monroe, LA 71203

EFFECTIVE:  
November 1, 2021

ACCESS SERVICE

7. Special Access Service (Cont'd)

7.5 Rates and Charges (Cont'd)

7.5.3 **Voice Grade Service** <sup>[1]</sup> (Cont'd)

Monthly  
Rates

Nonrecurring  
Charges

(C)

(E) Optional Features and Functions (Cont'd)

(1) Bridging (Cont'd)

(c) Telephoto Bridging

Two-Wire/Four-Wire

- Per port

- Two-Wire

ICB

ICB

- Four-Wire

ICB

ICB

<sup>[1]</sup> **Effective November 1, 2021 Voice Grade Services are grandfathered. Availability to current customers is limited to circuits in service at existing locations.**

(N)  
(N)

ISSUED:  
October 1, 2021

Chantel Miller  
Director Government Operations  
100 CenturyLink Dr.  
Monroe, LA 71203

EFFECTIVE:  
November 1, 2021

ACCESS SERVICE

7. Special Access Service (Cont'd)

7.5 Rates and Charges (Cont'd)

7.5.3 **Voice Grade Service** <sup>[1]</sup> (Cont'd)

(C)

	<u>Monthly Rates</u>	<u>Nonrecurring Charges</u>
(E) <u>Optional Features and Functions</u> (Cont'd)		
(1) Bridging (Cont'd)		
(d) <u>DATAPHONE Select-A-Station Bridging</u>		
Sequential Arrangement Ports		
- Per 2 Wire channel connected	ICB	ICB
- Per 4-Wire channel connected	ICB	ICB

<sup>[1]</sup> **Effective November 1, 2021 Voice Grade Services are grandfathered. Availability to current customers is limited to circuits in service at existing locations.**

(N)  
(N)

ISSUED:  
October 1, 2021

Chantel Miller  
Director Government Operations  
100 CenturyLink Dr.  
Monroe, LA 71203

EFFECTIVE:  
November 1, 2021

ACCESS SERVICE

7. Special Access Service (Cont'd)

7.5 Rates and Charges (Cont'd)

7.5.3 **Voice Grade Service** <sup>[1]</sup> (Cont'd)

(C)

<u>Monthly Rates</u>	<u>Nonrecurring Charges</u>
--------------------------	---------------------------------

(E) Optional Features and Functions (Cont'd)

(1) Bridging (Cont'd)

(d) DATAPHONE Select-A-Station Bridging (Cont'd)

Addressable Arrangement  
Ports

- Per 2 Wire channel connected	ICB	ICB
- Per 4-Wire channel connected	ICB	ICB

<sup>[1]</sup> **Effective November 1, 2021 Voice Grade Services are grandfathered. Availability to current customers is limited to circuits in service at existing locations.**

(N)

(N)

ISSUED:  
October 1, 2021

Chantel Miller  
Director Government Operations  
100 CenturyLink Dr.  
Monroe, LA 71203

EFFECTIVE:  
November 1, 2021



ACCESS SERVICE

7. Special Access Service (Cont'd)

7.5 Rates and Charges (Cont'd)

7.5.3 **Voice Grade Service** <sup>[1]</sup> (Cont'd)

Monthly  
Rates

Nonrecurring  
Charges

(C)

(E) Optional Features and Functions (Cont'd)

(1) Bridging (Cont'd)

(e) Telemetry and  
Alarm Bridging

Active Bridging  
Channel Connections

Split Bank

- Per channel  
connected

ICB

ICB

<sup>[1]</sup> **Effective November 1, 2021 Voice Grade Services are grandfathered. Availability to current customers is limited to circuits in service at existing locations.**

(N)  
(N)

ISSUED:  
October 1, 2021

Chantel Miller  
Director Government Operations  
100 CenturyLink Dr.  
Monroe, LA 71203

EFFECTIVE:  
November 1, 2021

ACCESS SERVICE

7. Special Access Service (Cont'd)

7.5 Rates and Charges (Cont'd)

7.5.3 **Voice Grade Service** <sup>[1]</sup> (Cont'd)

(C)

Monthly  
Rates

Nonrecurring  
Charges

(E) Optional Features and Functions (Cont'd)

(1) Bridging (Cont'd)

(e) Telemetry and  
Alarm Bridging (Cont'd)

Summation

- Per channel connected	ICB	ICB
-------------------------	-----	-----

Passive Bridging  
Channel Connections

- Per channel connected	ICB	ICB
-------------------------	-----	-----

<sup>[1]</sup> **Effective November 1, 2021 Voice Grade Services are grandfathered. Availability to current customers is limited to circuits in service at existing locations.**

(N)

(N)

ISSUED:  
October 1, 2021

Chantel Miller  
Director Government Operations  
100 CenturyLink Dr.  
Monroe, LA 71203

EFFECTIVE:  
November 1, 2021

ACCESS SERVICE

7. Special Access Service (Cont'd)

7.5 Rates and Charges (Cont'd)

7.5.3 Voice Grade Service <sup>[1]</sup> (Cont'd)

<u>Monthly Rates</u>	<u>Nonrecurring Charges</u>
----------------------	-----------------------------

(C)

(E) Optional Features and Functions (Cont'd)

(2) Conditioning

- Per point of termination

C-Type	\$1.70	\$50.00
--------	--------	---------

Sealing Current	None	None
-----------------	------	------

<sup>[1]</sup> **Effective November 1, 2021 Voice Grade Services are grandfathered. Availability to current customers is limited to circuits in service at existing locations.**

(N)  
(N)

ISSUED:  
October 1, 2021

Chantel Miller  
Director Government Operations  
100 CenturyLink Dr.  
Monroe, LA 71203

EFFECTIVE:  
November 1, 2021

ACCESS SERVICE

7. Special Access Service (Cont'd)

7.5 Rates and Charges (Cont'd)

7.5.3 Voice Grade Service <sup>[1]</sup> (Cont'd)

<u>Monthly Rates</u>	<u>Nonrecurring Charges</u>
--------------------------	---------------------------------

(C)

(E) Optional Features and Functions (Cont'd)

(3) Improved Return Loss  
for Effective Two-  
Wire or Four-Wire  
Transmission

- Per point of termination		
- Two-Wire	\$3.50	\$65.00
- Four-Wire	\$3.50	\$65.00

<sup>[1]</sup> **Effective November 1, 2021 Voice Grade Services are grandfathered. Availability to current customers is limited to circuits in service at existing locations.**

(N)  
(N)

ISSUED:  
October 1, 2021

Chantel Miller  
Director Government Operations  
100 CenturyLink Dr.  
Monroe, LA 71203

EFFECTIVE:  
November 1, 2021

ACCESS SERVICE

7. Special Access Service (Cont'd)

7.5 Rates and Charges (Cont'd)

7.5.3 Voice Grade Service<sup>[1]</sup> (Cont'd)

(C)

<u>Monthly Rates</u>	<u>Nonrecurring Charges</u>
--------------------------	---------------------------------

(E) Optional Features and Functions (Cont'd)

- |     |   |      |      |
|-----|---|------|------|
| (4) | Customer Specified<br>Receive Level<br>- Per Two-Wire<br>point of termination | None | None |
| (5) | Reserved for Future Use   |      |      |

<sup>[1]</sup> **Effective November 1, 2021 Voice Grade Services are grandfathered. Availability to current customers is limited to circuits in service at existing locations.**

(N)  
(N)

ISSUED:  
October 1, 2021

Chantel Miller  
Director Government Operations  
100 CenturyLink Dr.  
Monroe, LA 71203

EFFECTIVE:  
November 1, 2021

ACCESS SERVICE

7. Special Access Service (Cont'd)

7.5 Rates and Charges (Cont'd)

7.5.3 Voice Grade Service <sup>[1]</sup> (Cont'd)

	<u>Monthly Rates</u>	<u>Nonrecurring Charges</u>	(C)
(E) <u>Optional Features and Functions</u> (Cont'd)			
(6) Data Capability			
- Per point of termination	\$1.71	\$34.00	
(7) Telephoto Capability			
- Per point of termination	ICB	ICB	

<sup>[1]</sup> **Effective November 1, 2021 Voice Grade Services are grandfathered. Availability to current customers is limited to circuits in service at existing locations.** (N)  
(N)

ISSUED:  
October 1, 2021

Chantel Miller  
Director Government Operations  
100 CenturyLink Dr.  
Monroe, LA 71203

EFFECTIVE:  
November 1, 2021

ACCESS SERVICE

7. Special Access Service (Cont'd)

7.5 Rates and Charges (Cont'd)

7.5.3 **Voice Grade Service** <sup>[1]</sup> (Cont'd)

(C)

<u>Monthly Rates</u>	<u>Nonrecurring Charges</u>
----------------------	-----------------------------

(E) Optional Features and Functions (Cont'd)

(8) Signaling Capability

- Per point of termination

\$.85

\$54.00

**<sup>[1]</sup> Effective November 1, 2021 Voice Grade Services are grandfathered. Availability to current customers is limited to circuits in service at existing locations.**

(N)

(N)

ISSUED:  
October 1, 2021

Chantel Miller  
Director Government Operations  
100 CenturyLink Dr.  
Monroe, LA 71203

EFFECTIVE:  
November 1, 2021

ACCESS SERVICE

7. Special Access Service (Cont'd)

7.5 Rates and Charges (Cont'd)

7.5.8 **Digital Data Service** <sup>[1]</sup>

(C)

	<u>Monthly Rates</u>	<u>Nonrecurring Charges</u>
(A) <u>Channel Termination</u>		
- Per point of termination		
- All Speeds		
(2.4, 4.8, 9.6, 19.2 56.0, 64.0 Kbps)	\$130.00	\$360.00

<sup>[1]</sup> **Effective November 1, 2021 Digital Data Services are grandfathered. Availability to current customers is limited to circuits in service at existing locations.**

(N)  
(N)

ISSUED:  
October 1, 2021

Chantel Miller  
Director Government Operations  
100 CenturyLink Dr.  
Monroe, LA 71203

EFFECTIVE:  
November 1, 2021



ACCESS SERVICE

7. Special Access Service (Cont'd)

7.5 Rates and Charges (Cont'd)

7.5.8 Digital Data Service <sup>[1]</sup> (Cont'd)

(C)

		<u>Monthly Rates</u>	
		<u>Fixed</u>	<u>Per Mile</u>
(D)	<u>Channel Mileage</u>		
	- All Speeds		
	(2.4, 4.8, 9.6, 19.2 56.0, 64.0 Kbps)	\$36.70*	\$2.55
		<u>Monthly Rates</u>	<u>Nonrecurring Charges</u>
(E)	<u>Optional Features and Functions</u>		
	(1) Bridging Per Port	\$ 30.00	\$100.00
	(2) Data Amplification (56.0, 64.0 Kbps)	\$100.00	\$120.00

\* The Telephone Company applies a 50% billing percentage to the channel mileage fixed rate on jointly owned Digital Data circuits and applies 100% on wholly Digital Data owned circuits.

<sup>[1]</sup> **Effective November 1, 2021 Digital Data Services are grandfathered. Availability to current customers is limited to circuits in service at existing locations.**

(N)  
(N)

ISSUED:  
October 1, 2021

Chantel Miller  
Director Government Operations  
100 CenturyLink Dr.  
Monroe, LA 71203

EFFECTIVE:  
November 1, 2021

ACCESS SERVICE

7. Special Access Service (Cont'd)

7.5 Rates and Charges (Cont'd)

7.5.9 High Capacity Service

	<u>Monthly Rates</u>	<u>Nonrecurring Charges</u>	
(A) <u>Channel Termination</u>			
- Per point of termination			
- 1.544 Mbps	\$195.00	\$460.00	
- <b>128 kbps</b> <sup>[1]</sup>	\$162.00	\$440.00	(C)
- <b>256 kbps</b> <sup>[1]</sup>	\$173.00	\$440.00	(C)
- <b>384 kbps</b> <sup>[1]</sup>	\$183.00	\$440.00	(C)

<sup>[1]</sup> **Effective November 1, 2021 Fractional DS1 Services are grandfathered. Availability to current customers is limited to circuits in service at existing locations.** (N)  
(N)

ACCESS SERVICE

7. Special Access Service (Cont'd)

7.5 Rates and Charges (Cont'd)

7.5.9 High Capacity Service (Cont'd)

		<u>Monthly Rates</u>		
		<u>Fixed</u>	<u>Per Mile</u>	
(C)	<u>Channel Mileage</u>			
	(1) <u>1.544 Mbps</u>	\$105.00*	\$48.00	
	(2) <b><u>Fractional DS1</u></b> <sup>[1]</sup>			(C)
	128 kbps	\$75.00*	\$12.00	
	256 kbps	\$86.00*	\$23.00	
	384 kbps	\$96.00*	\$34.00	

\* The Telephone Company applies a 50% billing percentage to the channel mileage fixed rate on jointly owned High Capacity circuits and applies 100% on wholly Digital Data owned circuits.

<sup>[1]</sup> **Effective November 1, 2021 Fractional DS1 Services are grandfathered. Availability to current customers is limited to circuits in service at existing locations.** (N)  
(N)

ISSUED:  
October 1, 2021

Chantel Miller  
Director Government Operations  
100 CenturyLink Dr.  
Monroe, LA 71203

EFFECTIVE:  
November 1, 2021

ACCESS SERVICE

7. Special Access Service (Cont'd)

7.5 Rates and Charges (Cont'd)

7.5.9 High Capacity Service (Cont'd)

		<u>Monthly Rates</u>	<u>Nonrecurring Charges</u>	
(D)	<u>Optional Features and Functions</u> (Cont'd)			
(1)	Multiplexing (Cont'd)			
	DS1C to DS1			
	- Per arrangement	ICB	ICB	
	<b>DS1 to Voice*</b> <sup>[1]</sup>			
	- Per arrangement	ICB	ICB	(C)

ICB Rates and Charges are filed in 7.6 following.

\* A channel(s) of this DS1 to the Hub can be used for Digital Data or WATS Access Line Service.

<sup>[1]</sup> **Effective November 1, 2021 Voice Grade and Digital Data Services are grandfathered.** (N)  
**Availability to current customers is limited to circuits in service at existing locations.** (N)

ISSUED:  
October 1, 2021

Chantel Miller  
Director Government Operations  
100 CenturyLink Dr.  
Monroe, LA 71203

EFFECTIVE:  
November 1, 2021

ACCESS SERVICE

7. Special Access Service (Cont'd)

7.5 Rates and Charges (Cont'd)

7.5.9 High Capacity Service (Cont'd)

	<u>Monthly Rates</u>	<u>Nonrecurring Charges</u>	
(D) <u>Optional Features and Functions</u> (Cont'd)			
(1) Multiplexing (Cont'd)			
<b>DS1 to DS0</b> <sup>[1]</sup>			(C)
- Per arrangement	ICB	ICB	

<sup>[1]</sup> **Effective November 1, 2021 Voice Grade and Digital Data Services are grandfathered.** (N)  
**Availability to current customers is limited to circuits in service at existing locations.** (N)

ISSUED:  
October 1, 2021

Chantel Miller  
Director Government Operations  
100 CenturyLink Dr.  
Monroe, LA 71203

EFFECTIVE:  
November 1, 2021

ACCESS SERVICE

7. Special Access Service (Cont'd)

7.5 Rates and Charges (Cont'd)

7.5.13 WATS Access Line Service <sup>[1]</sup>

(C)

	<u>Monthly Rates</u>	<u>Nonrecurring Charges</u>
(A) <u>Channel Termination</u>		
- Per point of termination		
- Two-wire	\$23.00	\$205.00
- Four Wire	\$37.00	\$205.00
- DS1	ICB	ICB

<sup>[1]</sup> **Effective November 1, 2021 WATS Access Line Services are grandfathered. Availability to current customers is limited to circuits in service at existing locations.**

(N)  
(N)

ISSUED:  
October 1, 2021

Chantel Miller  
Director Government Operations  
100 CenturyLink Dr.  
Monroe, LA 71203

EFFECTIVE:  
November 1, 2021

MO2021-13

ACCESS SERVICE

7. Special Access Service (Cont'd)

7.5 Rates and Charges (Cont'd)

7.5.13 **WATS Access Line Service** <sup>[1]</sup> (Cont'd)

(C)

(B) Channel Mileage

		<u>Monthly Rates</u>	
		<u>Fixed</u>	<u>Per Mile</u>
(1)	Two-Wire/Four Wire	\$12.25	\$1.50
(2)	DS1	ICB	ICB

<sup>[1]</sup> **Effective November 1, 2021 WATS Access Line Services are grandfathered. Availability to current customers is limited to circuits in service at existing locations.**

(N)  
(N)

ISSUED:  
October 1, 2021

Chantel Miller  
Director Government Operations  
100 CenturyLink Dr.  
Monroe, LA 71203

EFFECTIVE:  
November 1, 2021

MO2021-13

ACCESS SERVICE

7. Special Access Service (Cont'd)

7.5 Rates and Charges (Cont'd)

7.5.13 WATS Access Line Service <sup>[1]</sup> (Cont'd)

(C)

	<u>Monthly Rates</u>	<u>Nonrecurring Charges</u>
(C) <u>Optional Features and Functions</u>		
(1) <u>WAL Bridging</u>		
Two-Wire/Four Wire		
- Per port		
- Two-wire	ICB	ICB
- Four Wire	\$6.00	\$50.00
(2) Improved two-wire and four-wire transmission specifications		
- per two-wire point of termination	\$3.40	\$60.00
- per four-wire point of termination	\$3.40	\$60.00

<sup>[1]</sup> **Effective November 1, 2021 WATS Access Line Services are grandfathered. Availability to current customers is limited to circuits in service at existing locations.**

(N)

(N)

ISSUED:  
October 1, 2021

Chantel Miller  
Director Government Operations  
100 CenturyLink Dr.  
Monroe, LA 71203

EFFECTIVE:  
November 1, 2021

MO2021-13



ACCESS SERVICE

7. Special Access Service (Cont'd)

7.5 Rates and Charges (Cont'd)

7.5.13 WATS Access Line Service <sup>[1]</sup> (Cont'd)

(C)

	<u>Monthly Rates</u>	<u>Nonrecurring Charges</u>
(C) <u>Optional Features and Functions</u> (Cont'd)		
(3) Signaling Capability		
- per point of termination	\$0.85	\$54.00

<sup>[1]</sup> **Effective November 1, 2021 WATS Access Line Services are grandfathered. Availability to current customers is limited to circuits in service at existing locations.**

(N)

(N)

ISSUED:  
October 1, 2021

Chantel Miller  
Director Government Operations  
100 CenturyLink Dr.  
Monroe, LA 71203

EFFECTIVE:  
November 1, 2021

ACCESS SERVICE

7. Special Access Service (Cont'd)

7.5 Rates and Charges (Cont'd)

7.5.14 **Special Access Term Discount Plan** <sup>[1]</sup> (Cont'd)

(C)

(A) Channel Termination (Cont'd)

(2) 56.0 kbps and 64.0 kbps

Monthly  
Rate

(a) Three (3) Year

- Per Point of Termination

\$88.00

(b) Five (5) Year

- Per Point of Termination

\$80.00

**<sup>[1]</sup> Effective November 1, 2021 Digital Data Services are grandfathered. Availability to current customers is limited to circuits in service at existing locations. Customers will not be able to renew the Digital Data Circuits upon expiration of the term.**

(N)  
|  
(N)

ISSUED:  
October 1, 2021

Chantel Miller  
Director Government Operations  
100 CenturyLink Dr.  
Monroe, LA 71203

EFFECTIVE:  
November 1, 2021

ACCESS SERVICE

7. Special Access Service (Cont'd)

7.5 Rates and Charges (Cont'd)

7.5.14 Special Access Term Discount Plan <sup>[1]</sup> (Cont'd)

(C)

(B) Channel Mileage (Cont'd)

(2) 56.0 kbps and 64.0 kbps

(a) Channel Mileage (Fixed - Per Month)

<u>Three (3)</u> <u>Year</u>	<u>Five (5)</u> <u>Year</u>
\$34.00	\$33.00

(b) Channel Mileage (Per Month - Per Mile)

<u>Three (3)</u> <u>Year</u>	<u>Five (5)</u> <u>Year</u>
\$2.40	\$2.30

<sup>[1]</sup> **Effective November 1, 2021 Digital Data Services are grandfathered. Availability to current customers is limited to circuits in service at existing locations. Customers will not be able to renew the Digital Data Circuits upon expiration of the term.**

(N)  
|  
(N)

ISSUED:  
October 1, 2021

Chantel Miller  
Director Government Operations  
100 CenturyLink Dr.  
Monroe, LA 71203

EFFECTIVE:  
November 1, 2021

ACCESS SERVICE

7. Special Access Service (Cont'd)

7.5 Rates and Charges (Cont'd)

7.5.14 Special Access Term Discount Plan (Cont'd)

(C) Multiplexing

(1) **DS1 to DS0** <sup>[1]</sup>

(C)

- Per Arrangement

Three (3)  
Year

Five (5)  
Year

ICB

ICB

<sup>[1]</sup> **Effective November 1, 2021 Digital Data Services are grandfathered. Availability to current customers is limited to circuits in service at existing locations. Customers will not be able to renew the Digital Data Circuits upon expiration of the term.**

(N)  
|  
(N)

ISSUED:  
October 1, 2021

Chantel Miller  
Director Government Operations  
100 CenturyLink Dr.  
Monroe, LA 71203

EFFECTIVE:  
November 1, 2021

ACCESS SERVICE

10. Special Federal Government Access Services (Cont'd)

10.8 Service Offerings to the Federal Government (Cont'd)

10.8.1 Type and Description

**(G) Voice Grade Special Access Services** <sup>[1]</sup>

(C)

(1) Voice Grade Secure Communications Type I

Approximate bandwidth of 10-50,000 Hertz. Furnished for two-point secure communications on two-wire or four-wire metallic facilities between a customer premises location and an end user's premises. Services are conditioned as follows:

T-3 Conditioning – The absolute loss (referenced to 1 milliwatt) with respect to frequency shall not exceed:

15 dB at 10 Hz  
13 dB at 100 Hz  
9 dB at 1,000 Hz  
20 dB at 10,000 Hz  
30 dB at 50,000 Hz

Additional conditioning (available in one or two directions on four-wire facilities only) to provide the following characteristics:

The absolute loss (referenced to one milliwatt) with respect to frequency shall not exceed:

0 dB at 1,000 Hz  
± 1 dB between 1,000 Hz and 40,000 Hz  
± 2 dB between 10 Hz and 50,000 Hz  
(+ means more loss)

The net loss of the conditioned service (with or without additional conditioning) shall not vary by more than four dB at 1,000 Hz from the levels specified above. Voice frequency signaling or supervisory tones can be transmitted.

<sup>[1]</sup> **Effective November 1, 2021 Voice Grade Services are grandfathered. Availability to current customers is limited to circuits in service at existing locations.**

(N)  
(N)

ISSUED:  
October 1, 2021

Chantel Miller  
Director Government Operations  
100 CenturyLink Dr.  
Monroe, LA 71203

EFFECTIVE:  
November 1, 2021

MO2021-13

ACCESS SERVICE

10. Special Federal Government Access Services (Cont'd)

10.8 Service Offerings to the Federal Government (Cont'd)

10.8.1 Type and Description (Cont'd)

(G) **Voice Grade Special Access Services** <sup>[1]</sup> (Cont'd)

(C)

(2) Voice Grade Secure Communications Type II

Approximate bandwidth 10-50,000 Hz. Furnished on four-wire metallic facilities for duplex operation for two-point secure communication between a customer premises on an end user's premises and an end user's premises. Services are conditioned as follows:

G-1 Conditioning - The absolute loss with respect to frequency and the net loss variation shall be the same as Voice Grade Secure Communications Type I services without additional conditioning. Voice frequency signaling or supervisory tones can be transmitted.

(3) Voice Grade Secure Communications Type III

Approximate bandwidth 10-50,000 Hz. Furnished on four-wire metallic facilities for duplex operation for two-point secure communication between an IC premises switch and an end user's premise. Services are conditioned as follows:

G-2 Conditioning - The absolute loss with respect to frequency and the net loss variation from the switch to an end user's premises shall be the same as Voice Grade Secure Communications Type I services without additional conditioning; from an end user's premises to the switch shall be the same as Voice Grade Secure Communications Type I services with additional conditioning. Voice frequency signaling or supervisory tones can be transmitted.

**<sup>[1]</sup> Effective November 1, 2021 Voice Grade Services are grandfathered. Availability to current customers is limited to circuits in service at existing locations.**

(N)  
(N)

ISSUED:  
October 1, 2021

Chantel Miller  
Director Government Operations  
100 CenturyLink Dr.  
Monroe, LA 71203

EFFECTIVE:  
November 1, 2021

ACCESS SERVICE

10. Special Federal Government Access Services (Cont'd)

10.8 Service Offerings to the Federal Government (Cont'd)

10.8.1 Type and Description (Cont'd)

(A) **Voice Grade Special Access Services** <sup>[1]</sup> (Cont'd)

(C)

(4) Voice Grade Secure Communications Type IV

Approximate bandwidth 10-50,000 Hz. Furnished on four-wire metallic facilities for duplex operation for two-point secure communication between two customer premises switches. Services are conditioned as follows:

G-3 Conditioning - The absolute loss with respect to frequency and the net loss variation shall be the same in both directions of trans-mission as Voice Grade Secure Communications Type I services with additional conditioning. Voice frequency signaling or supervisory tones can be transmitted.

(B) Reserved For Future Use

<sup>[1]</sup> **Effective November 1, 2021 Voice Grade Services are grandfathered. Availability to current customers is limited to circuits in service at existing locations.**

(N)  
(N)

ISSUED:  
October 1, 2021

Chantel Miller  
Director Government Operations  
100 CenturyLink Dr.  
Monroe, LA 71203

EFFECTIVE:  
November 1, 2021

ACCESS SERVICE

10. Special Federal Government Access Services (Cont'd)

10.8 Service Offerings to the Federal Government (Cont'd)

10.8.2 Mileage Application

Mileage, when used for rate application between two customer premises, shall be determined by the V and H Coordinates Method as set forth in National Exchange Carrier Association, Inc. Tariff F.C.C. No. 4 and administered as set forth in 7.4.6 preceding.

10.8.3 Rates and Charges

(A) **Voice Grade Special Access Service** <sup>[1]</sup>

(C)

The provision of T-3 and G conditioned services contemplates station and tandem switching operations, using customer provided equipment, as well as Special Access Service. Voice grade services, where required by the customer provided equipment or switching operation, are furnished in accordance with the applicable sections of this tariff.

<sup>[1]</sup> **Effective November 1, 2021 Voice Grade Services are grandfathered. Availability to current customers is limited to circuits in service at existing locations.**

(N)  
(N)

ISSUED:  
October 1, 2021

Chantel Miller  
Director Government Operations  
100 CenturyLink Dr.  
Monroe, LA 71203

EFFECTIVE:  
November 1, 2021



ACCESS SERVICE

10. Special Federal Government Access Services (Cont'd)

10.8 Service Offerings to the Federal Government (Cont'd)

10.8.3 Rates and Charges (Cont'd)

(A) **Voice Grade Special Access Service** <sup>[1]</sup> (Cont'd)

(C)

<u>Voice Grade Secure Communication</u>	<u>Monthly Rates</u>	<u>Nonrecurring Charges</u>	<u>Termination Charges</u>
Type I, each T-3 Conditioning	ICB	ICB	ICB
Add'l Conditioning, per service termination	ICB	ICB	ICB

<sup>[1]</sup> **Effective November 1, 2021 Voice Grade Services are grandfathered. Availability to current customers is limited to circuits in service at existing locations.**

(N)

(N)

ISSUED:  
October 1, 2021

Chantel Miller  
Director Government Operations  
100 CenturyLink Dr.  
Monroe, LA 71203

EFFECTIVE:  
November 1, 2021

ACCESS SERVICE

10. Special Federal Government Access Services (Cont'd)

10.8 Service Offerings to the Federal Government (Cont'd)

10.8.3 Rates and Charges (Cont'd)

(A) **Voice Grade Special Access Service** <sup>[1]</sup> (Cont'd)

(C)

<u>Voice Grade Secure Communication</u>	<u>Monthly Rates</u>	<u>Nonrecurring Charges</u>	<u>Termination Charges</u>
Type II, each G-1 Conditioning	ICB	ICB	ICB
Type III, each G-2 Conditioning,	ICB	ICB	ICB
Add'l Conditioning, per service termination	ICB	ICB	ICB

<sup>[1]</sup> **Effective November 1, 2021 Voice Grade Services are grandfathered. Availability to current customers is limited to circuits in service at existing locations.**

(N)

(N)

ISSUED:  
October 1, 2021

Chantel Miller  
Director Government Operations  
100 CenturyLink Dr.  
Monroe, LA 71203

EFFECTIVE:  
November 1, 2021

ACCESS SERVICE

10. Special Federal Government Access Services (Cont'd)

10.8 Service Offerings to the Federal Government (Cont'd)

10.8.3 Rates and Charges (Cont'd)

(A) **Voice Grade Special Access Service** <sup>[1]</sup> (Cont'd)

(C)

<u>Voice Grade Secure Communication</u>	<u>Monthly Rates</u>	<u>Nonrecurring Charges</u>	<u>Termination Charges</u>
Type IV, each G-3 Conditioning	ICB	ICB	ICB
Add'l Conditioning, per service termination	ICB	ICB	ICB

<sup>[1]</sup> **Effective November 1, 2021 Voice Grade Services are grandfathered. Availability to current customers is limited to circuits in service at existing locations.**

(N)  
(N)

ISSUED:  
October 1, 2021

Chantel Miller  
Director Government Operations  
100 CenturyLink Dr.  
Monroe, LA 71203

EFFECTIVE:  
November 1, 2021