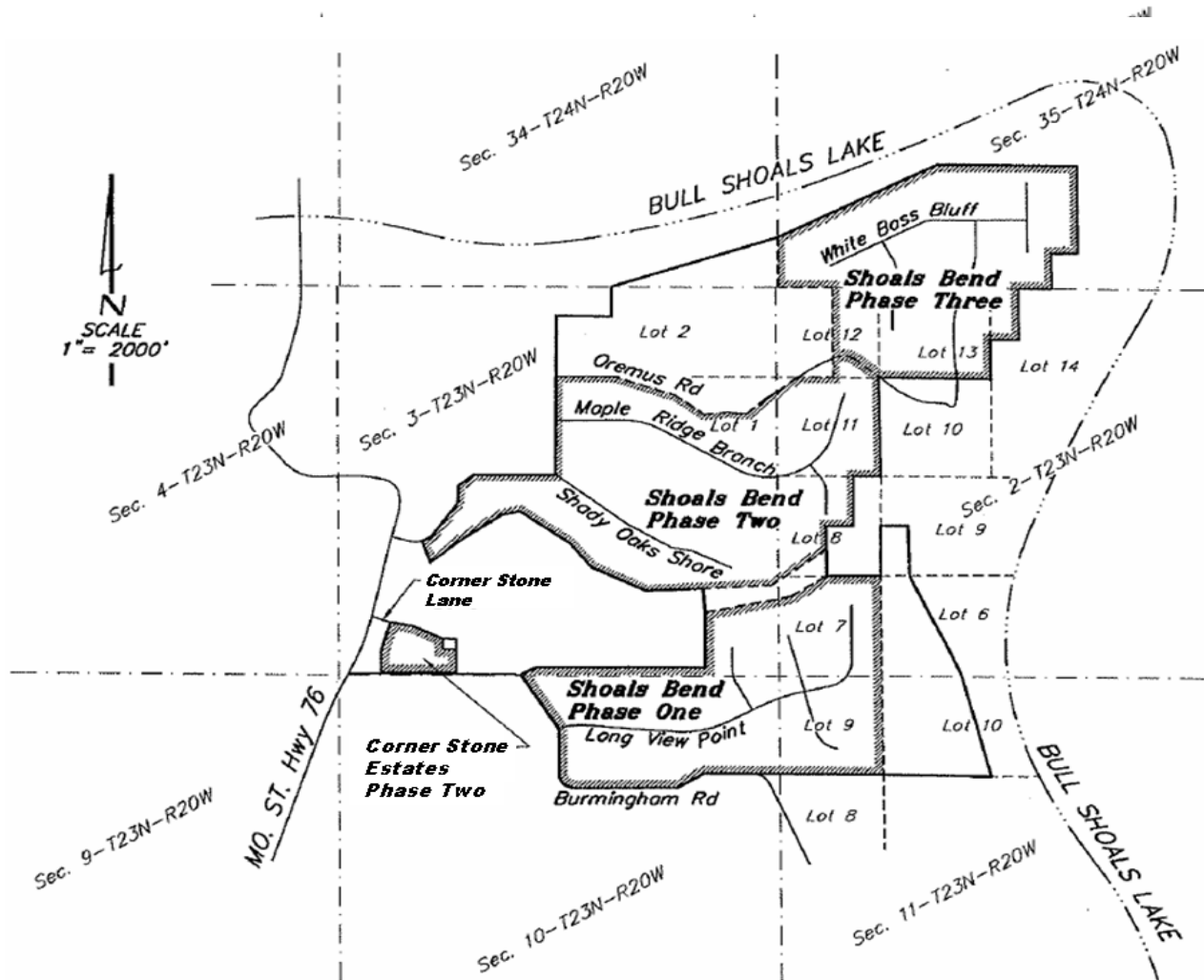


SHOALS BEND AND CORNER STONE ESTATES IN TANEY COUNTY
--

*Part of Sections 34 & 35 - T24N - R20W and
Part of Sections 2, 3, 10 & 11 - T23N - R20W
Taney County, Missouri*



Shoals Bend and Corner Stone Estates (As described in Case EO-2012-0192)

All of Lots 1 thru 26, inclusive, all of Solomon circle, a street 50 feet wide, all of Psalms Way, a street 50 feet wide, all in Corner Stone Estates at Shoals Bend Phase Two located in the South Half of the southwest Quarter of Section 3, Township 23 North, Range 20 West, and being a subdivision in the City of Forsyth, Taney County, Missouri, as per plat recorded in Slide Cabinet "I" at Page 19, in the official records of Taney County, Missouri.