

NOTES

- 1. Unless otherwise indicated, the ownership of all entities is 100%.
- 2. Alternate share, unit classes are depicted in red.

KEY



- 1. Liberty Owned Corporation or LLC 
- 2. Non -Liberty Owned Corporation or LLC 

Chart A

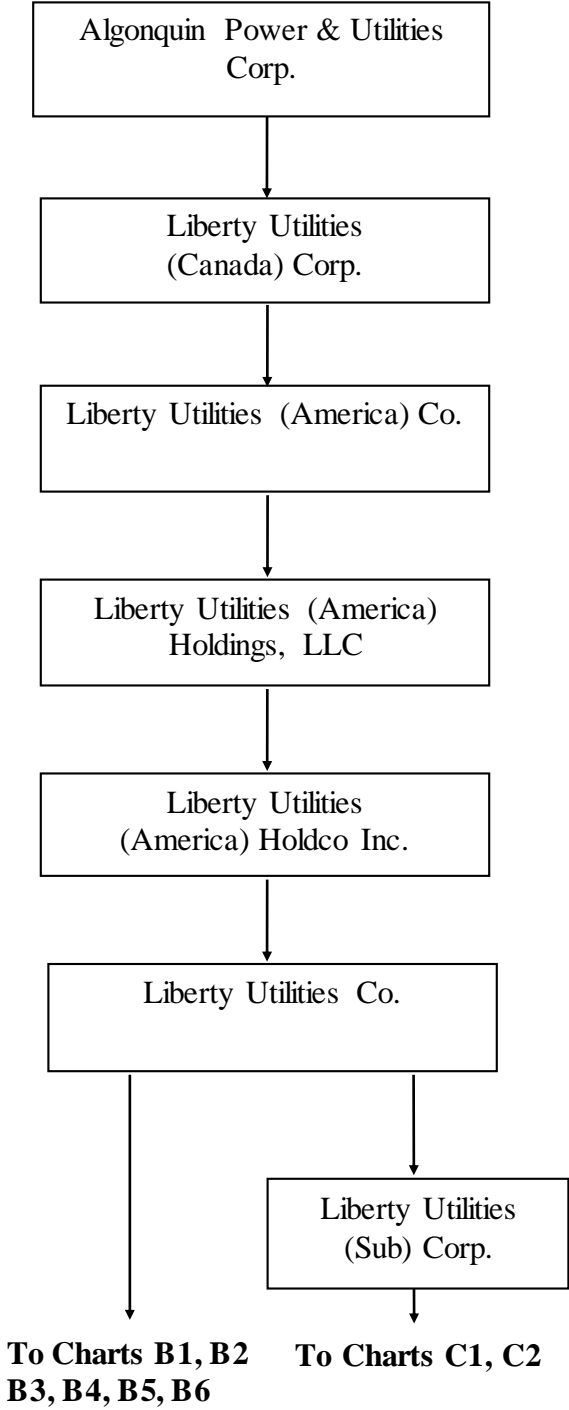


Chart B1

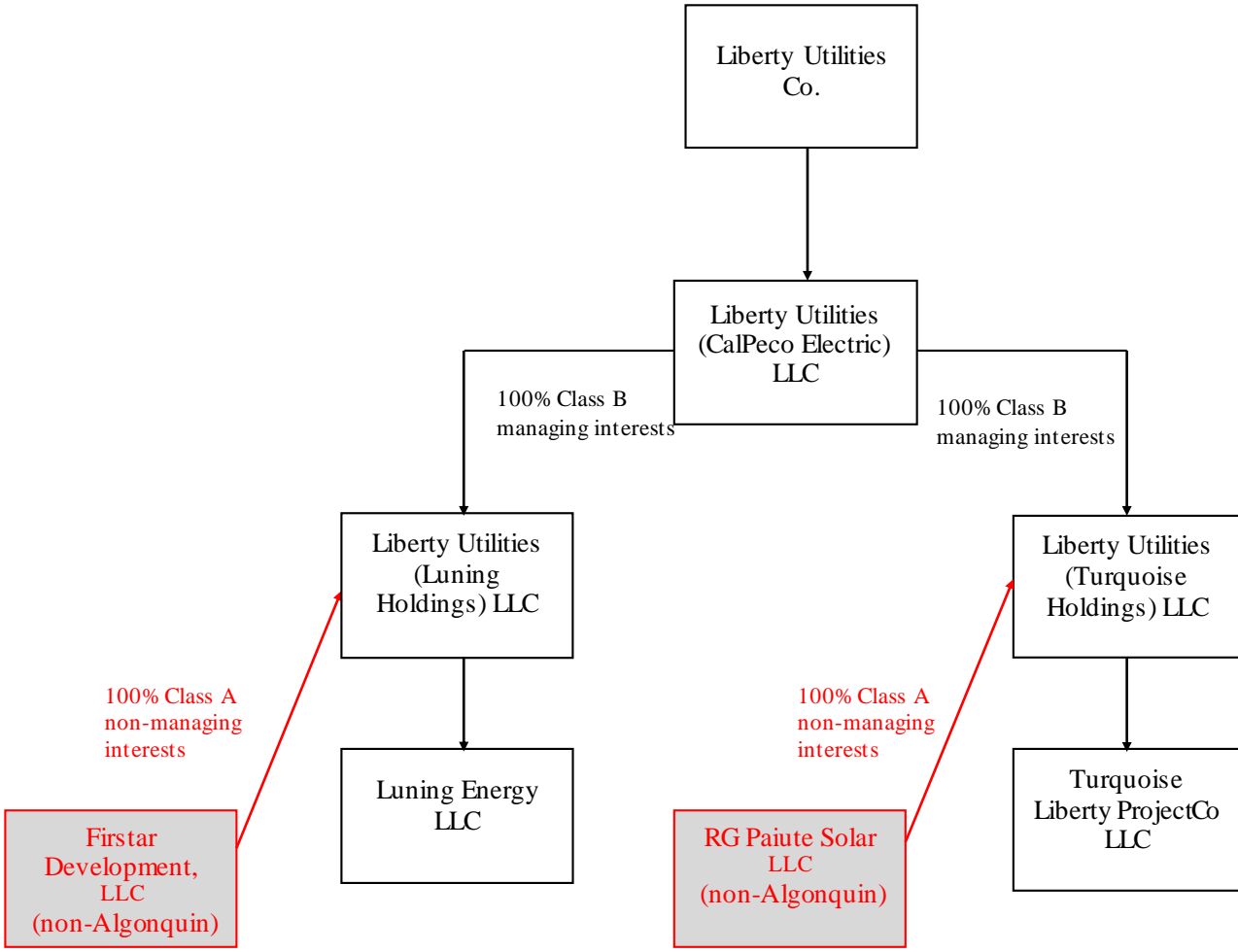


Chart B2

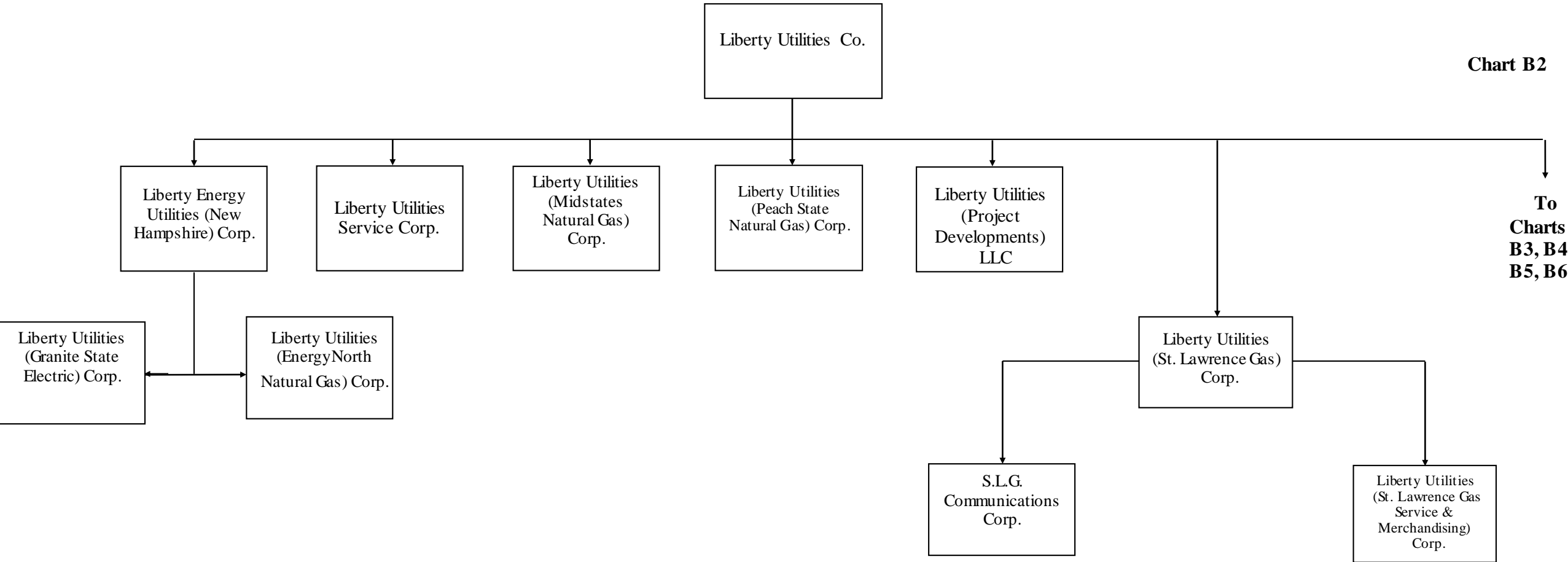
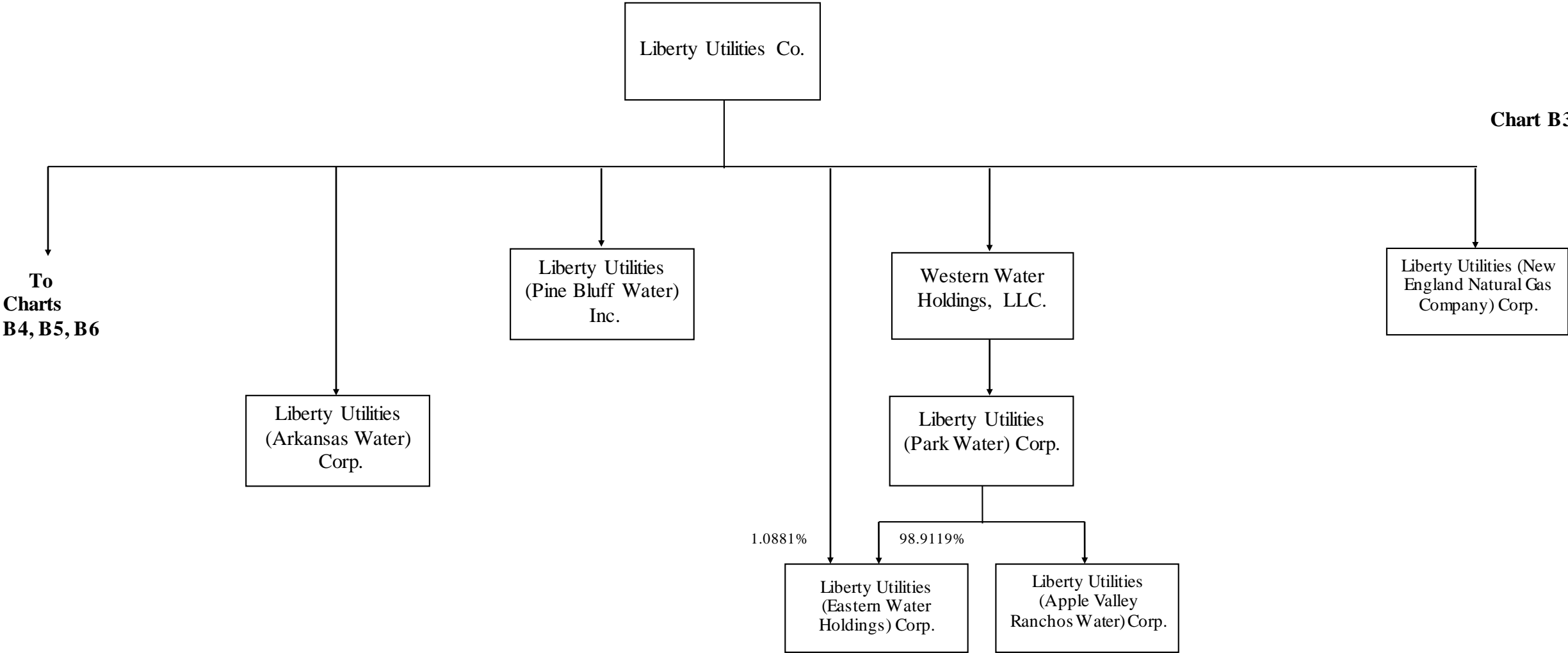


Chart B3



**To
Charts
B4, B5, B6**

Chart B4

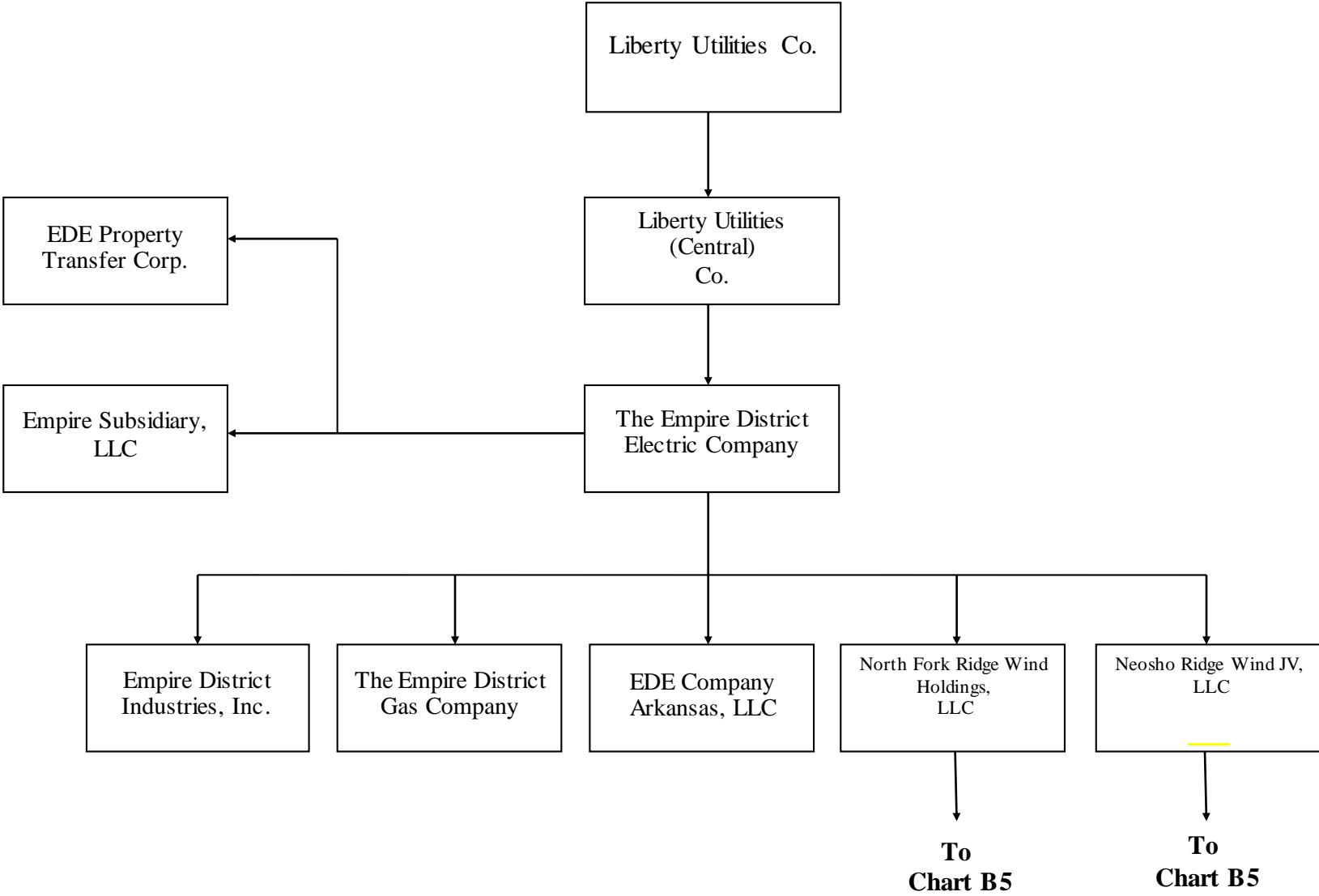


Chart B5

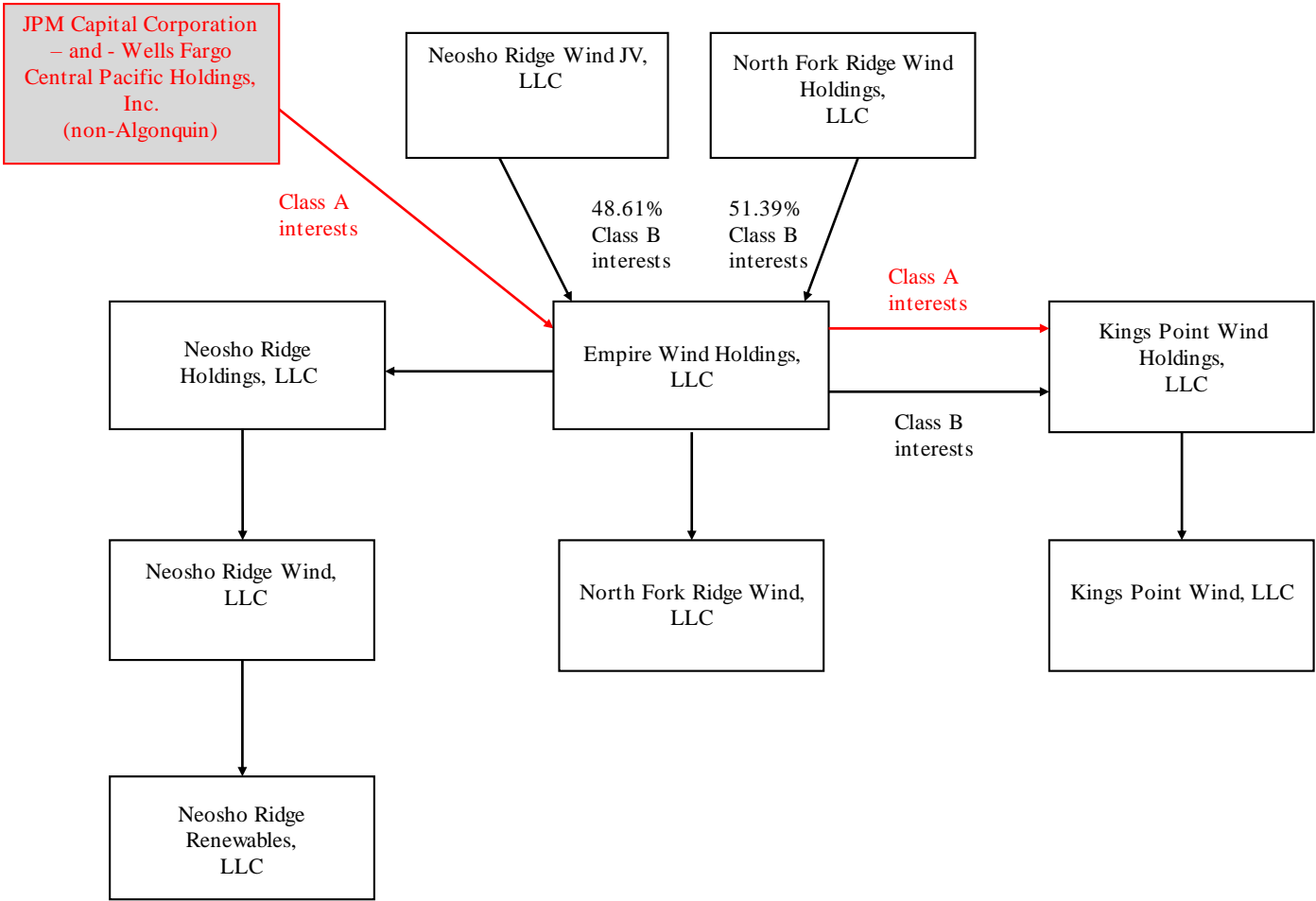


Chart B6

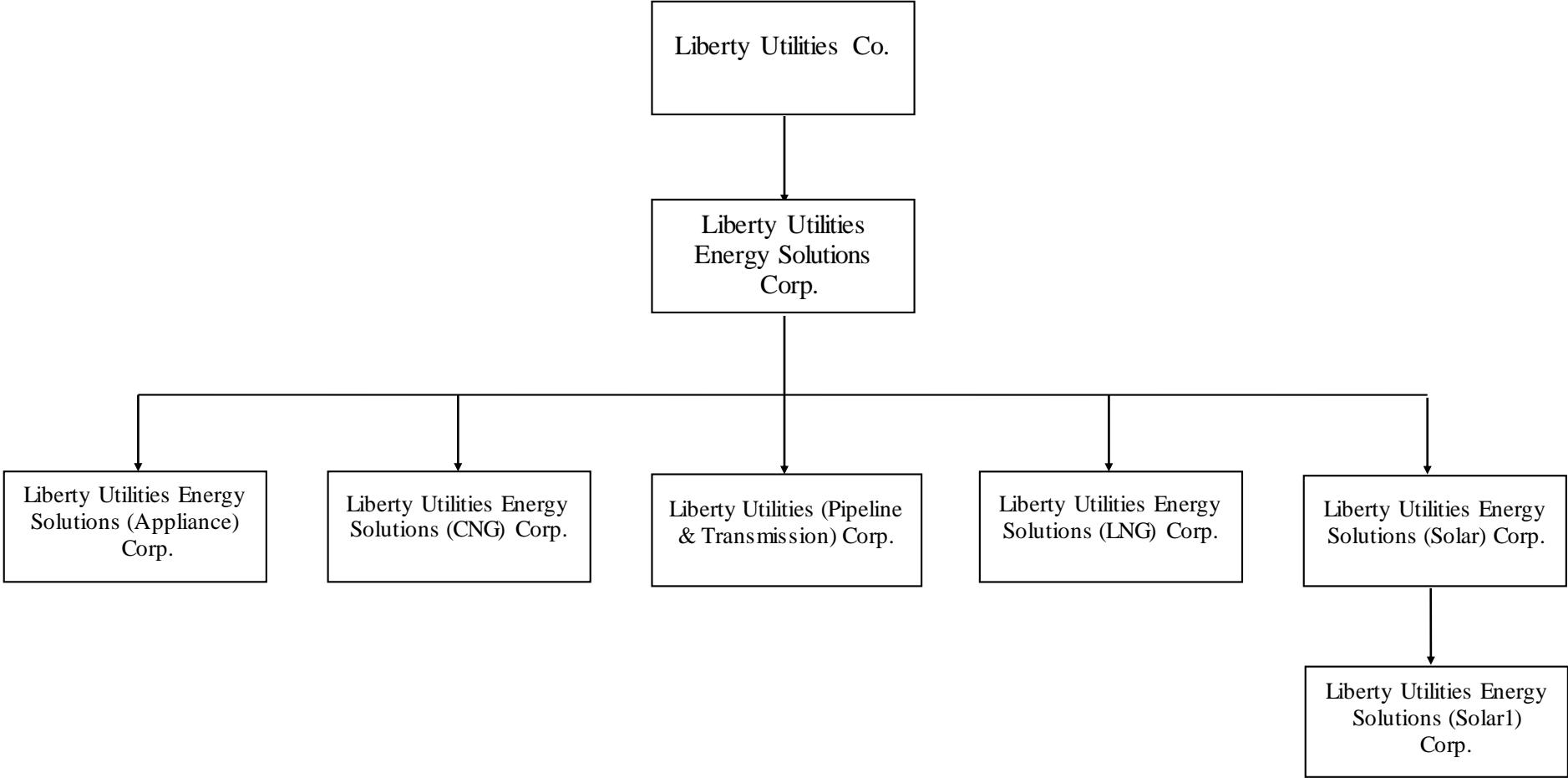
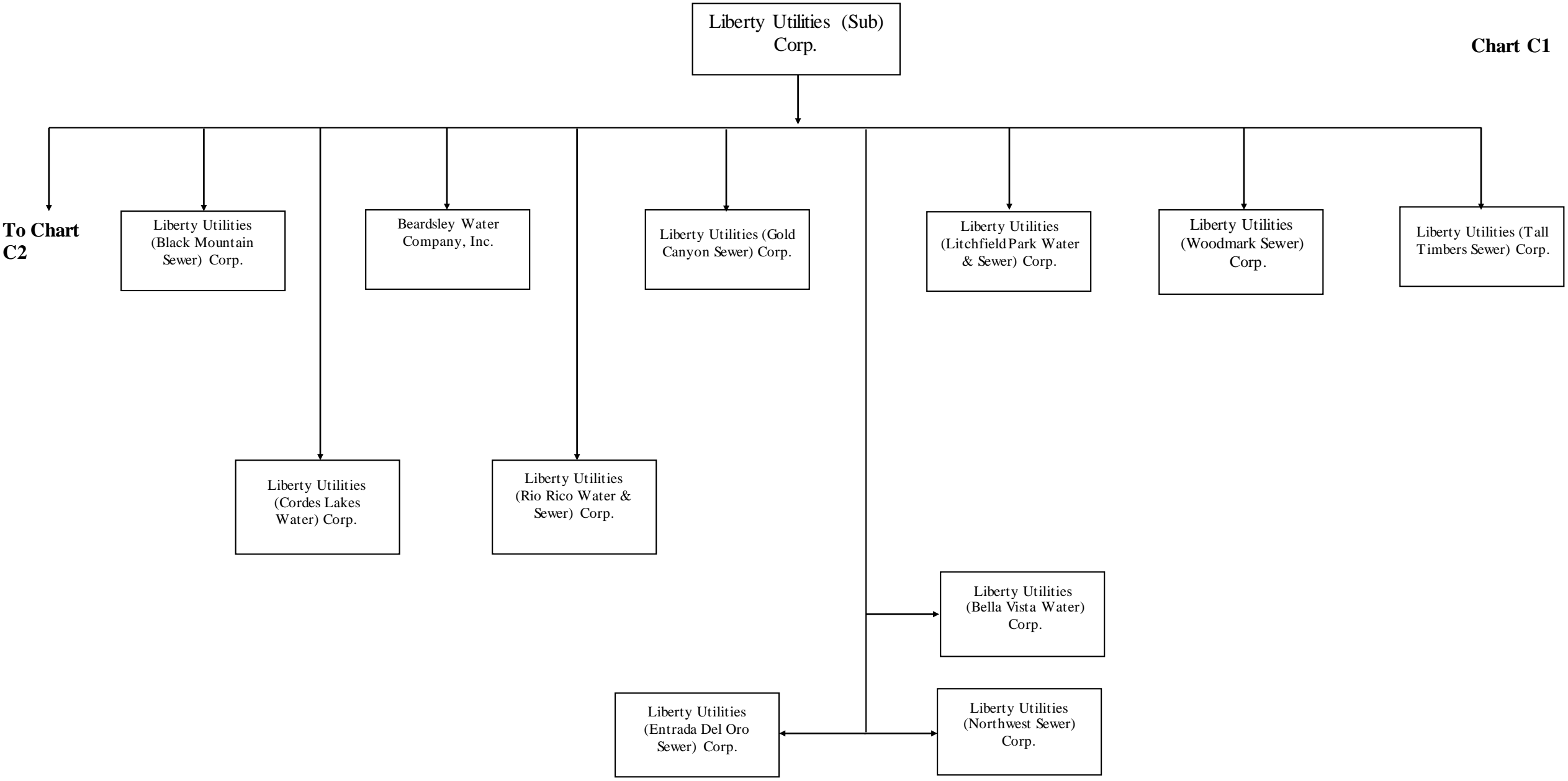


Chart C1



To Chart C2

Chart C2

