

AN ORDER GRANTING TO AMEREN TRANSMISSION COMPANY OF ILLINOIS AN ASSENT PURSUANT TO § 229.100, RSMo., FOR THE PURPOSE OF CONSTRUCTING AND OPERATING A 345-kV ELECTRIC TRANSMISSION LINE IN ADAIR COUNTY, MISSOURI.

NOW, THEREFORE, BE IT ORDAINED BY THE COUNTY COMMISSION OF ADAIR COUNTY, MISSOURI, AS FOLLOWS:

Section 1. The Adair County Commission grants an assent, pursuant to § 229.100, RSMo.,<sup>1</sup> to Ameren Transmission Company of Illinois for purposes of constructing and operating a 345-kV electric transmission line only within the route as described and attached hereto as **Exhibit A1** (Notice of Public Hearing, attached hereto) and **Exhibit A2** (Adair County Route Maps for Mark Twain Transmission Line Project, attached hereto).

Section 2. This assent is granted reserving all rights of the Adair County Commission with respect to future applications requesting the Adair County Commission's assent pursuant to § 229.100, RSMo. by ATXI or any other entity. This assent is further conditioned on Ameren Missouri and Ameren Transmission Company of Illinois not raising the voltage of the 161 kV circuit on the Teal Line option without first seeking an assent from the Adair County Commission.

PASSED AND APPROVED, this 5<sup>th</sup> day of September, 2017.

  
Stanley Pickens  
Presiding Commissioner

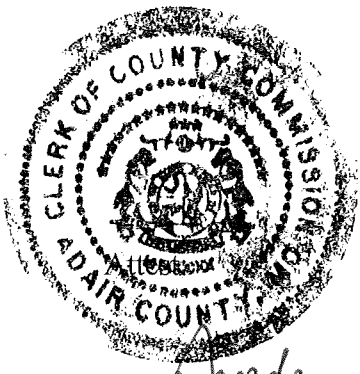
  
Bill King  
First District Commissioner

Mark Thompson, Second District  
Commissioner voted against the motion.

---

<sup>1</sup> Section 229.100, RSMo. provides as follows:

No person or persons, association, companies or corporations shall erect poles for the suspension of electric light, or power wires, or lay and maintain pipes, conductors, mains and conduits for any purpose whatever, through, on, under or across the public roads or highways of any county of this state, without first having obtained the assent of the county commission of such county therefor; and no poles shall be erected or such pipes, conductors, mains and conduits be laid or maintained, except under such reasonable rules and regulations as may be prescribed and promulgated by the county highway engineer, with the approval of the county commission.



*Sandra J. Collop*  
\_\_\_\_\_  
Sandra J. Collop  
County Clerk

## NOTICE OF PUBLIC HEARING OF THE ADAIR COUNTY COMMISSION

The Adair County Commission will conduct a public hearing regarding a request by the Ameren Transmission Company Illinois for an assent from the Adair County Commission pursuant to §229.100 RSMo for the proposed route of the **Mark Twain 345-kV electric transmission line project**. The hearing will be held at **6 PM on Tuesday, September 5, 2017** at the **Kirkville Middle School**.

The specific proposed Ameren Transmission Company of Illinois route for which the assent is being requested is as follows:

- Teal Line - From the border of Adair County with Schuyler County to the Teal Line's intersection with the Purple Line;
- Purple Line - From the Purple Line's intersection with the Teal Line to its intersection with the Orange Line;
- Orange Line - From the Orange Line's intersection with the Purple Line to the border of Adair County with Knox County; and
- New 345/161 kV Substation - On the Purple Line just north of the existing Adair 161 kV substation.

Assent is not being requested by Ameren Transmission Company of Illinois for any of the other possible routes that it had previously proposed. Ameren Transmission Company of Illinois is also not requesting assent for its previously proposed Zachary substation site. Finally, Ameren Transmission Company of Illinois is not requesting assent for the portion of the Orange Line located north of the Orange Line's intersection with the Purple Line.

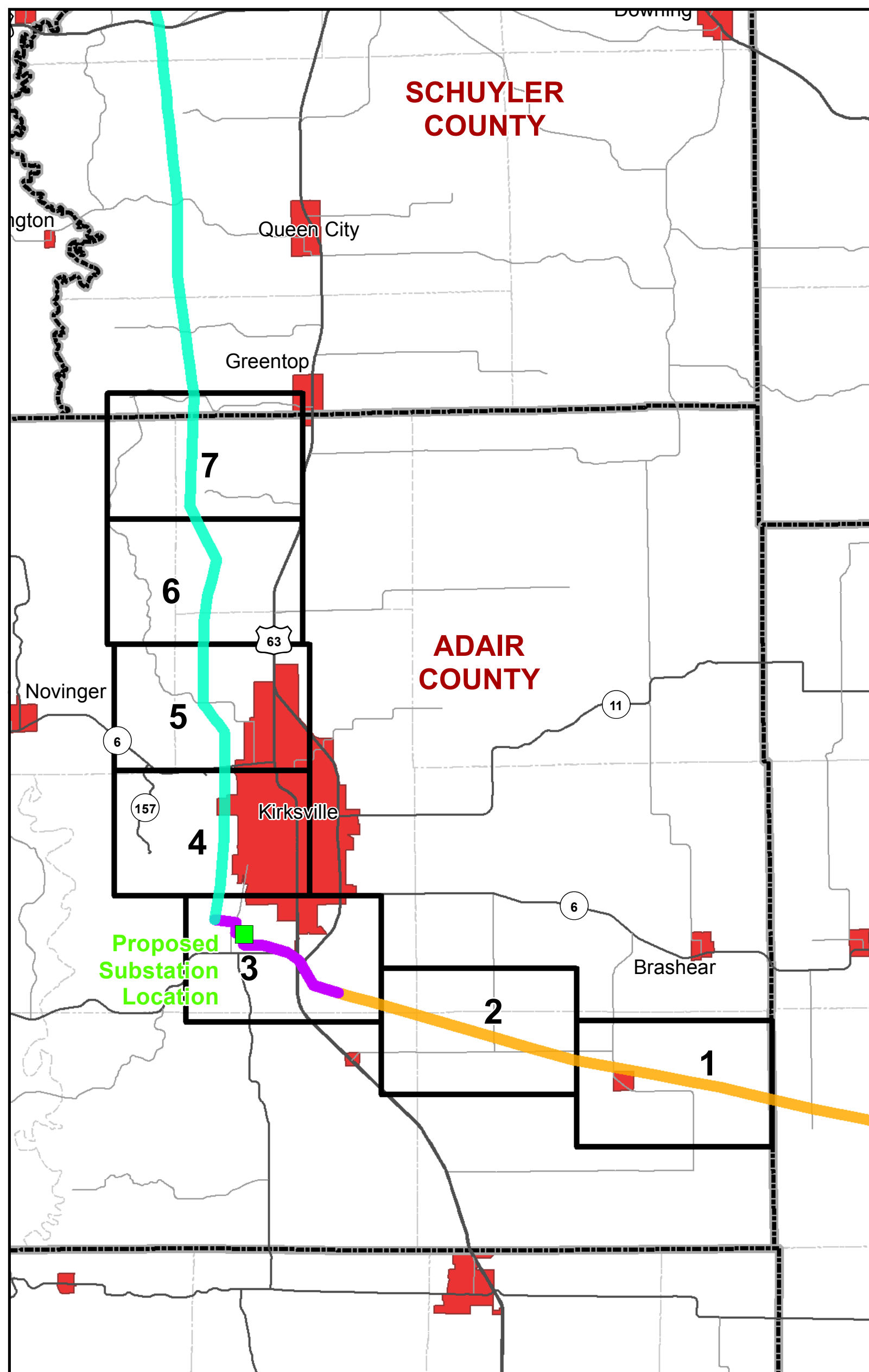
Maps identifying the Teal Line, Purple Line and the portion of the Orange Line for which assent is being requested can be reviewed at <https://www.ameren.com/mark-twain/maps> under the heading "Overview maps of the new route options".

**Members of the public who wish to ask questions or raise concerns during the public hearing with respect to the proposed route are asked to provide those questions or concerns in writing to the Adair County Commission by no later than Friday, August 25, 2017.** The questions and concerns should be sent to: Mark Twain Project Assent Hearing, c/o Adair County Commission, 106 W. Washington St., Kirkville, MO 63501.

# Mark Twain Transmission Project

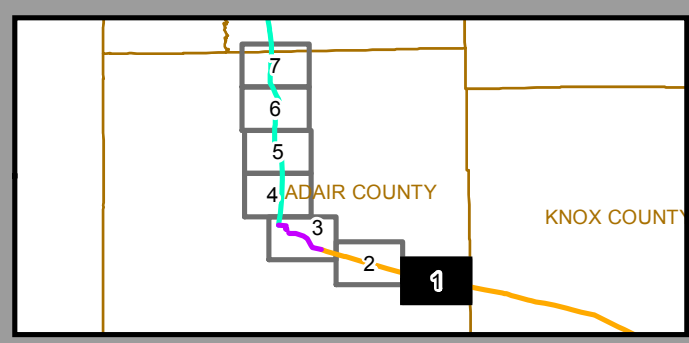
## New Proposed Routes & Substation Location

### Adair County



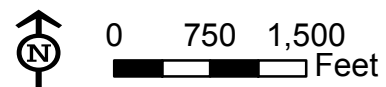
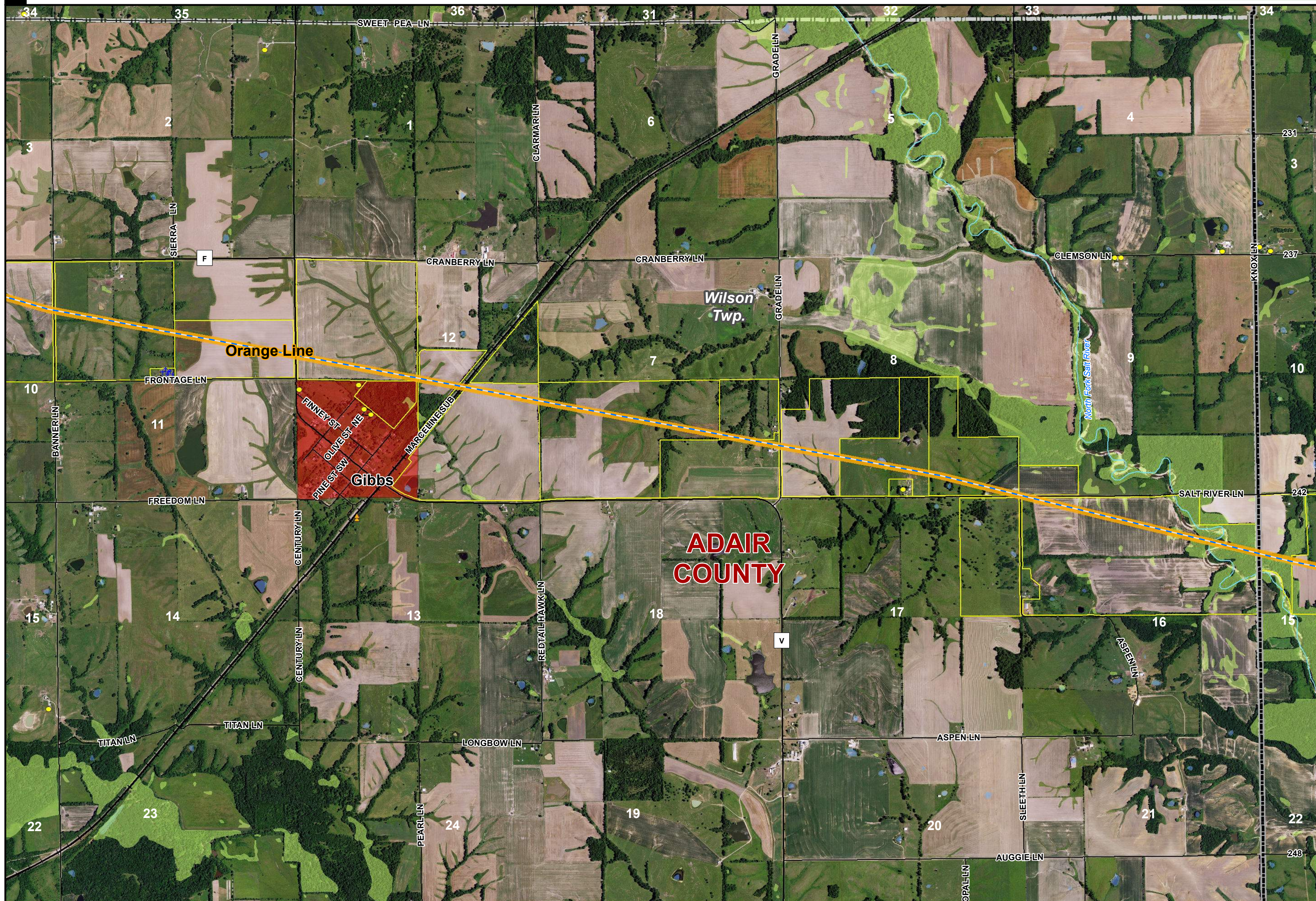
**This map is preliminary and is being provided for informational purposes only. All routes are subject to change.**

- Proposed 345 kV Segment - Teal Line
- Proposed 345 kV Segment - Purple Line
- Proposed 345 kV Segment - Orange Line
- Detailed Map Page
- Project Endpoint
- ⊙ VOR / VORTAC
- ✈ Airport (Private)
- ✈ Airport (Public)
- Residence
- State Boundary
- County Boundary
- Township
- City or Village
- Parcel Boundary
- Center Pivot Irrigation
- Missouri Conservation Area
- USDA NRCS Easement
- USFWS Easement
- Local Conservation or Recreation Lands
- Major Stream or River
- Lake
- Wetland (NWI)
- NRHP Site
- ✈ Cemetery
- ✈ Religious Facility
- ▲ FCC Licensed Tower
- ✈ Education Facility
- 63 US Highway
- 15 State Highway
- F State Route
- Local Road
- + + + + Railroad

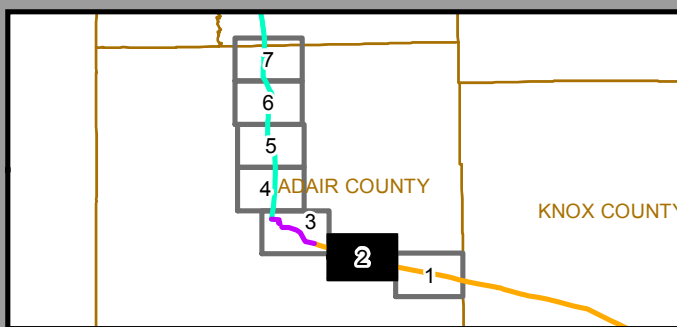


# Mark Twain Transmission Project

## New Proposed Routes – Adair County

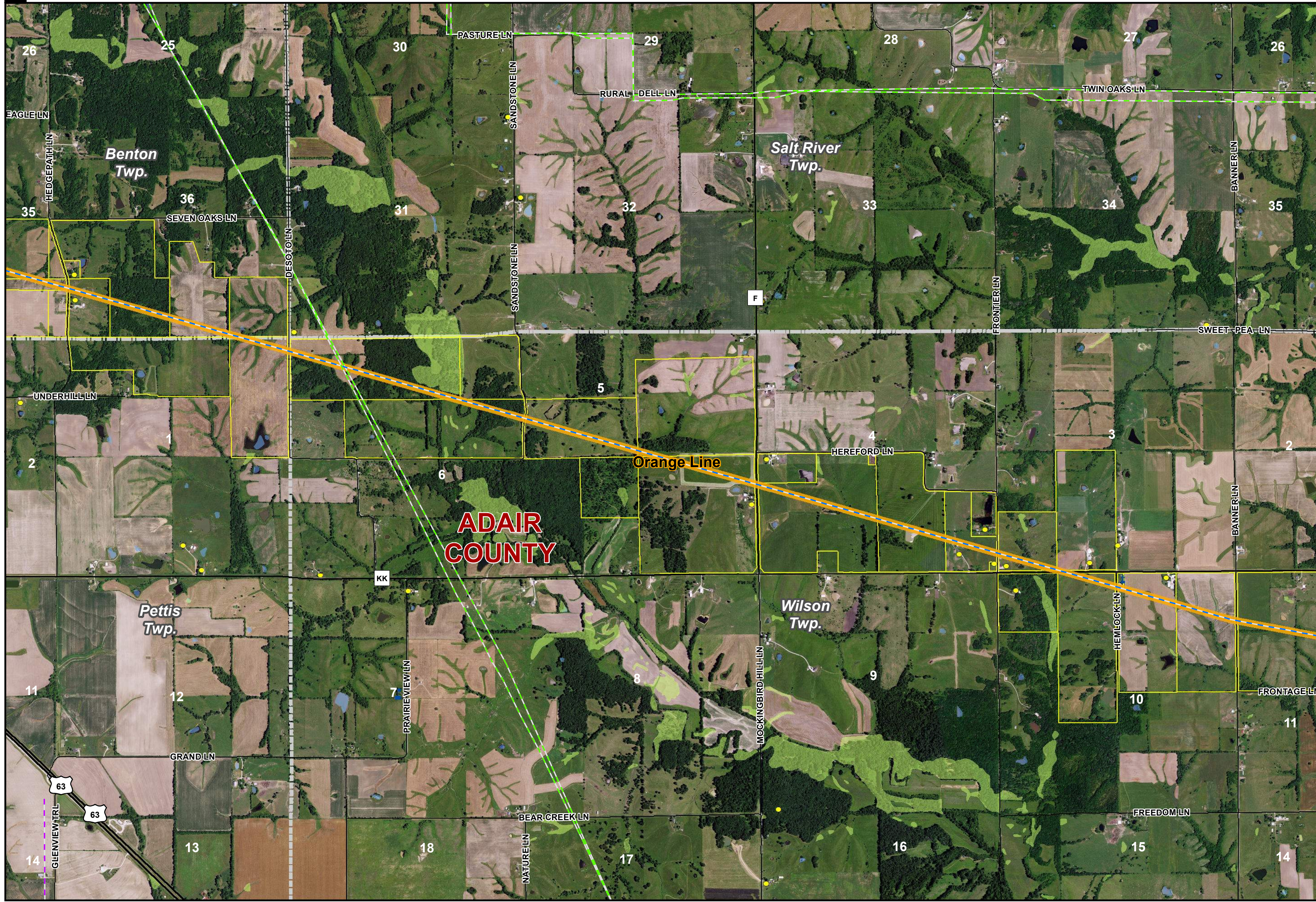


This map is preliminary and is being provided for informational purposes only. All routes are subject to change.



# Mark Twain Transmission Project

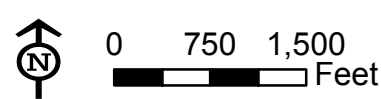
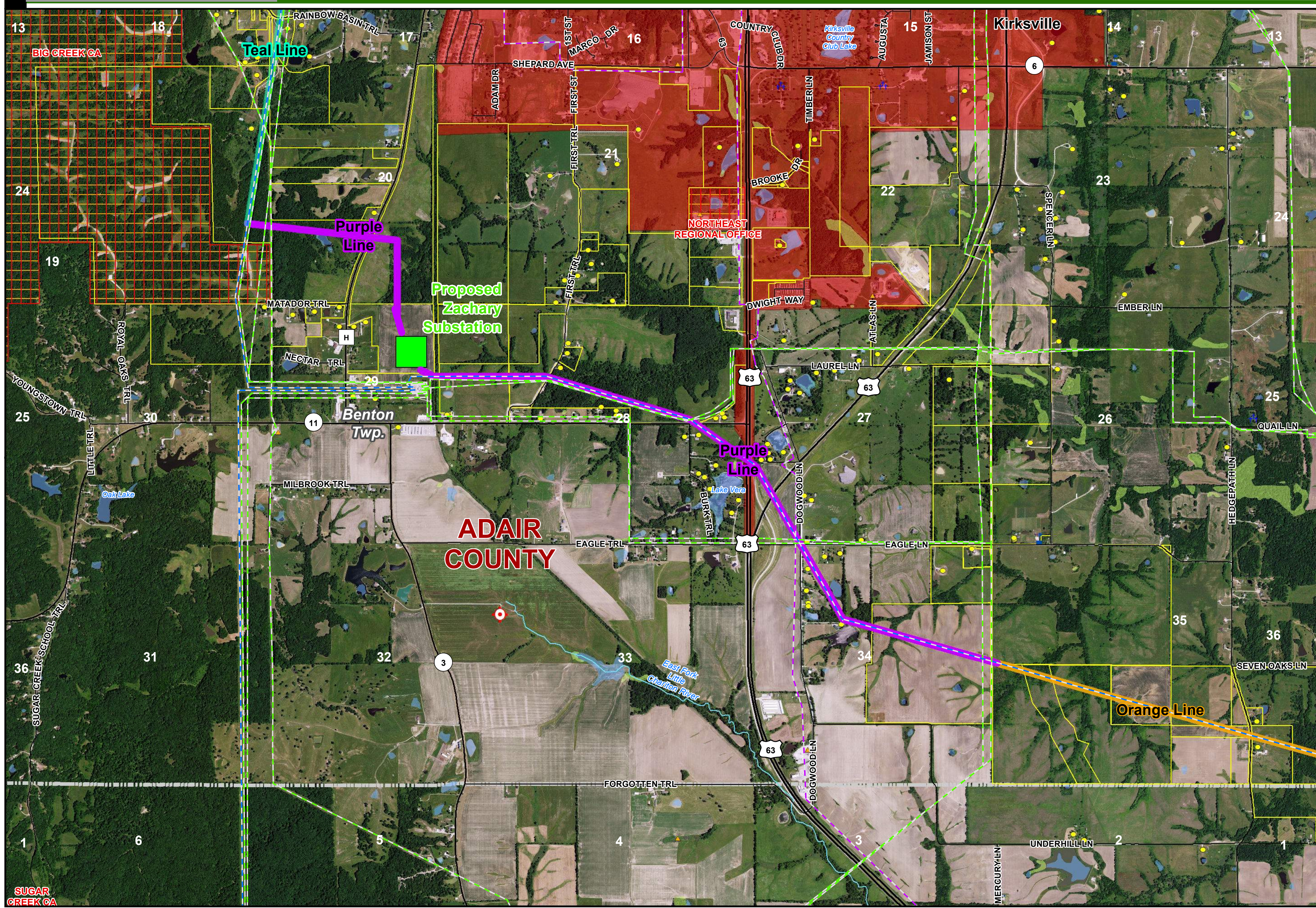
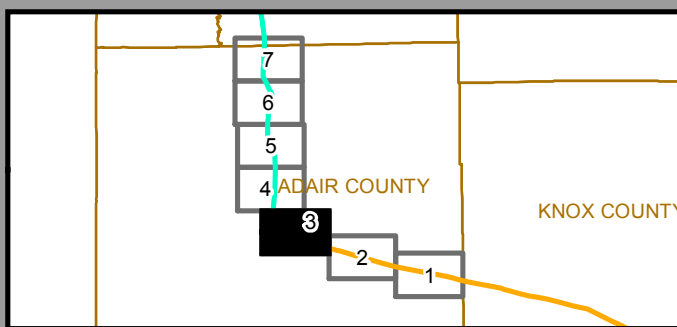
## New Proposed Routes – Adair County



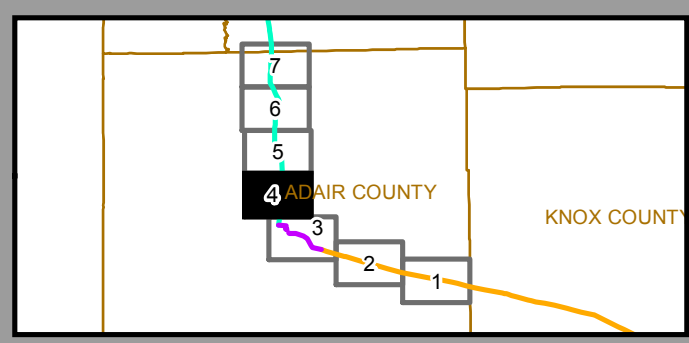
This map is preliminary and is being provided for informational purposes only. All routes are subject to change.

# Mark Twain Transmission Project

## New Proposed Routes – Adair County

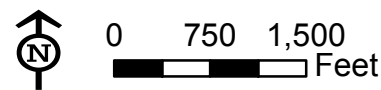
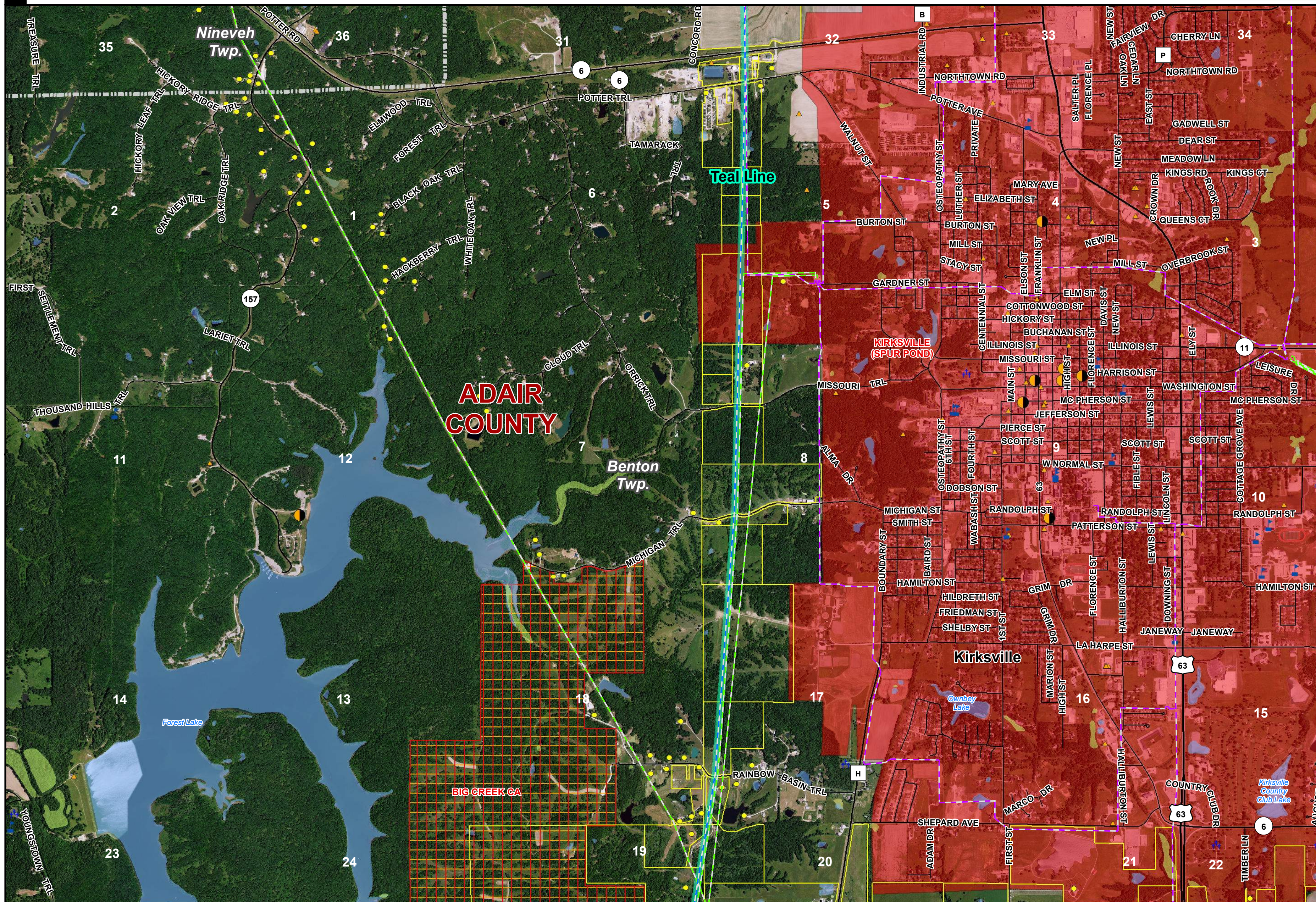


This map is preliminary and is being provided for informational purposes only. All routes are subject to change.



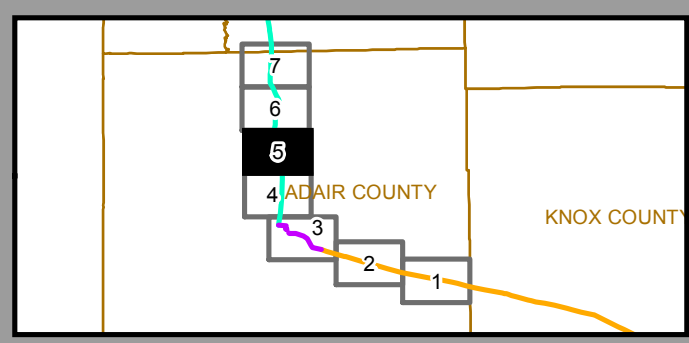
# Mark Twain Transmission Project

## New Proposed Routes – Adair County



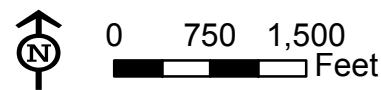
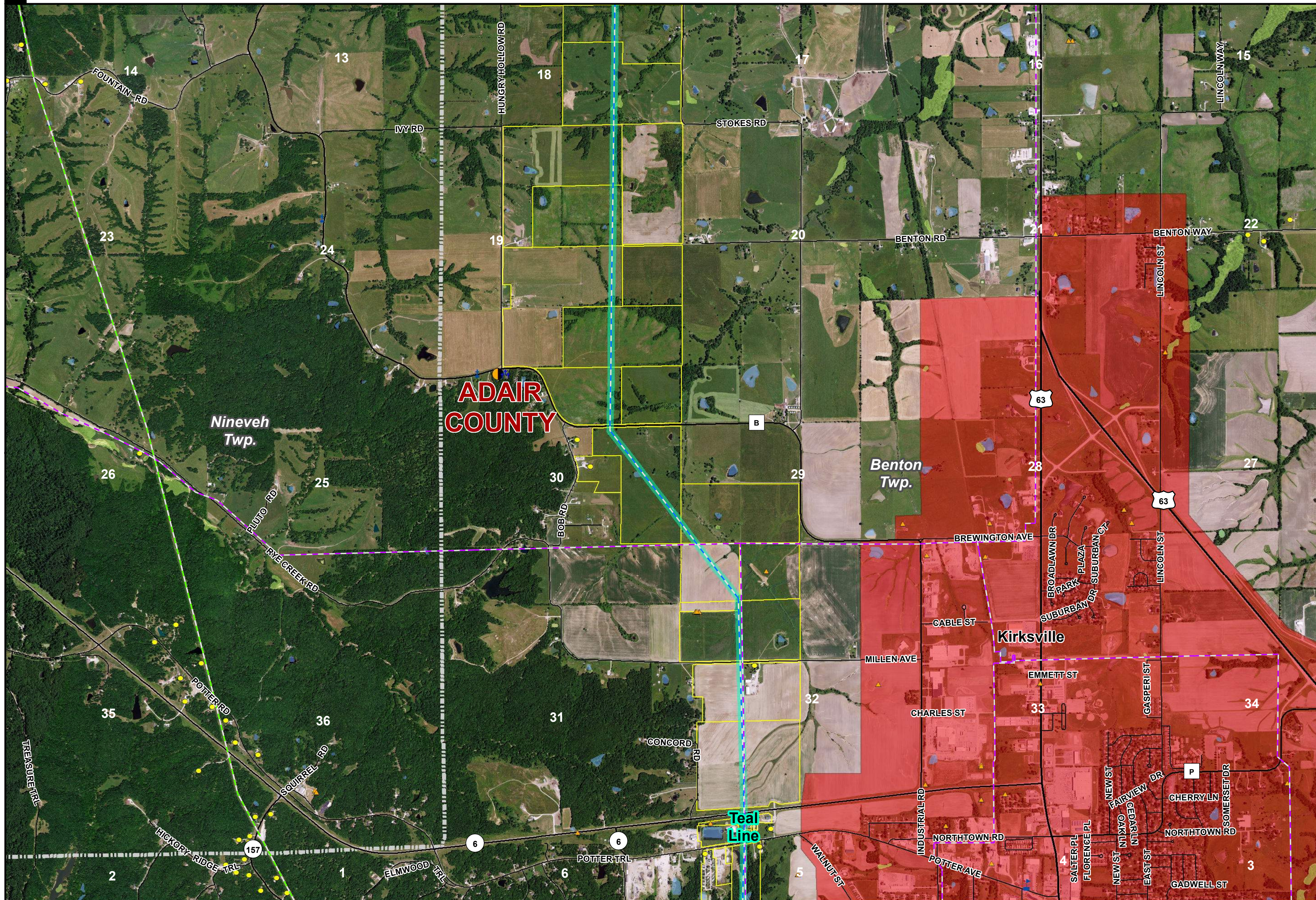
This map is preliminary and is being provided for informational purposes only. All routes are subject to change.



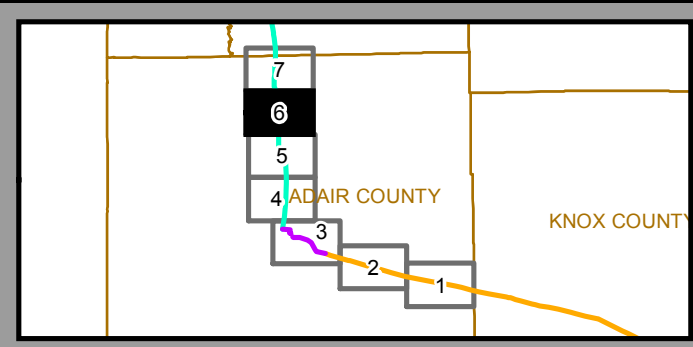


# Mark Twain Transmission Project

## New Proposed Routes – Adair County

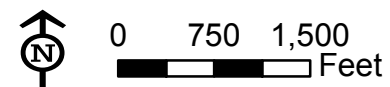
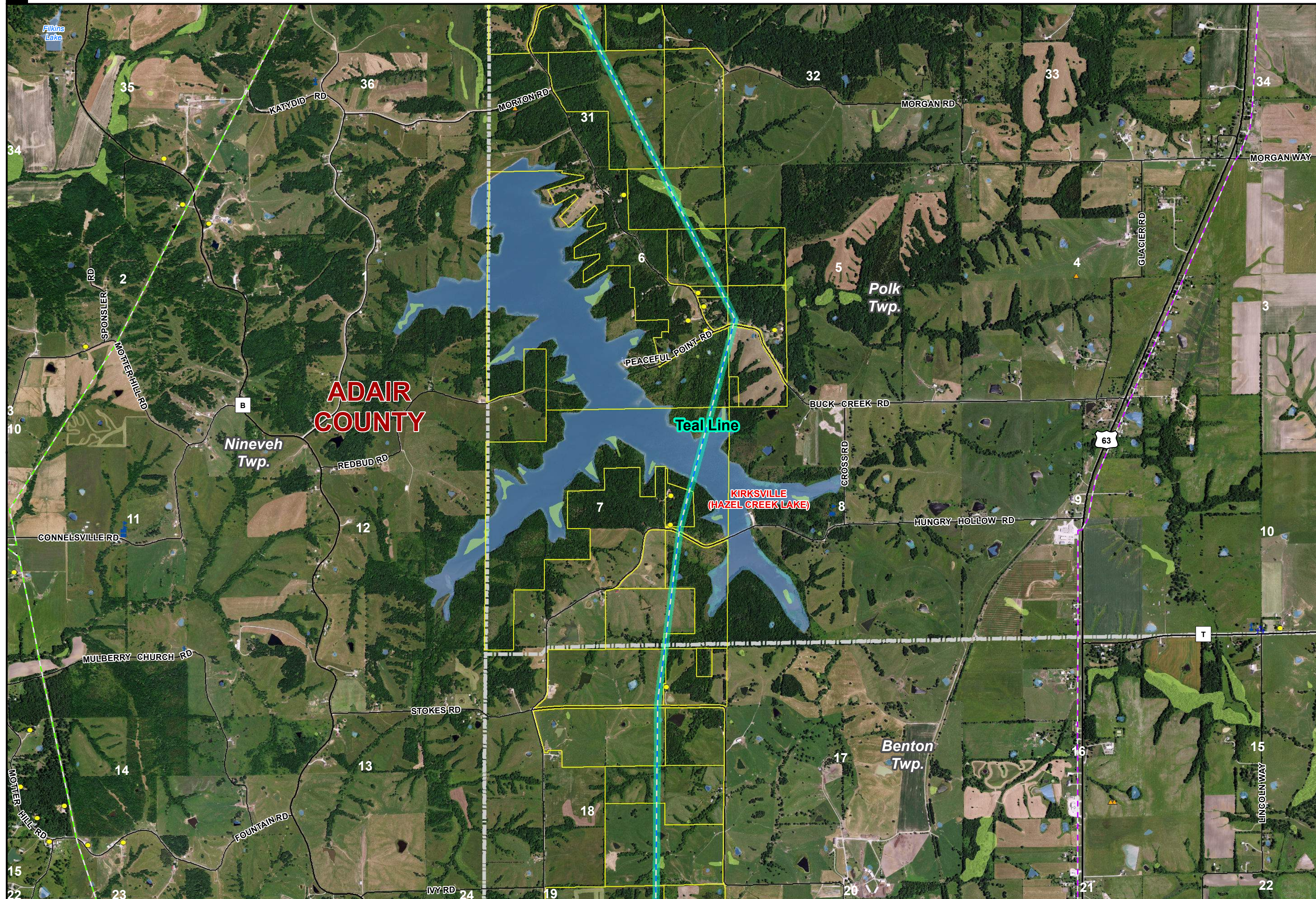


This map is preliminary and is being provided for informational purposes only. All routes are subject to change.

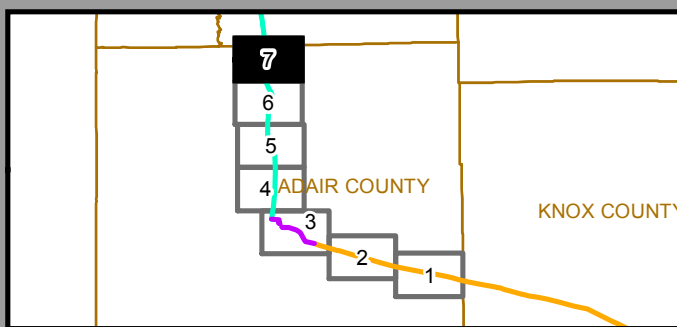


# Mark Twain Transmission Project

## New Proposed Routes – Adair County

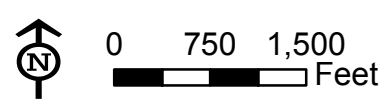
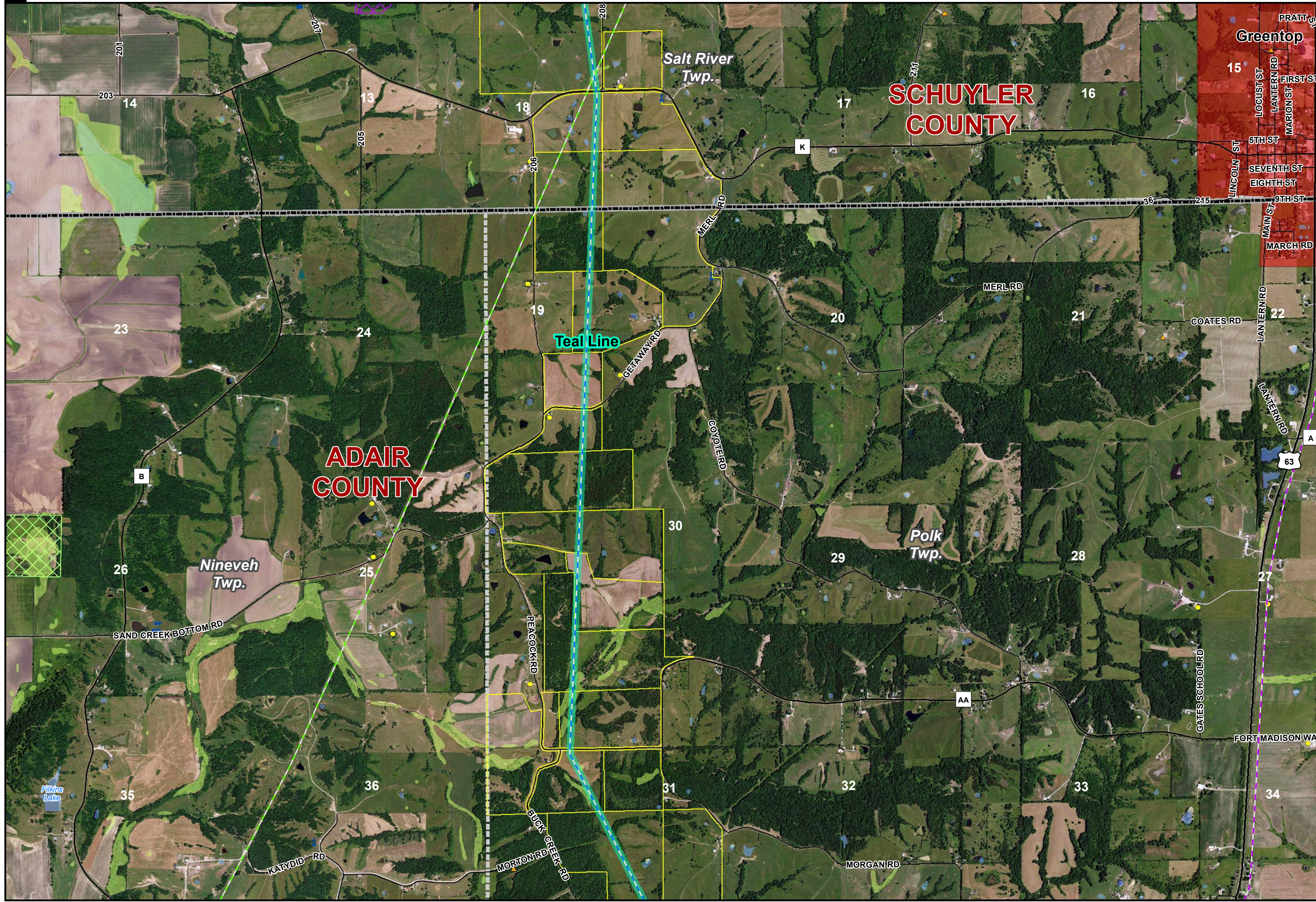


This map is preliminary and is being provided for informational purposes only. All routes are subject to change.



# Mark Twain Transmission Project

## New Proposed Routes – Adair County



This map is preliminary and is being provided for informational purposes only. All routes are subject to change.