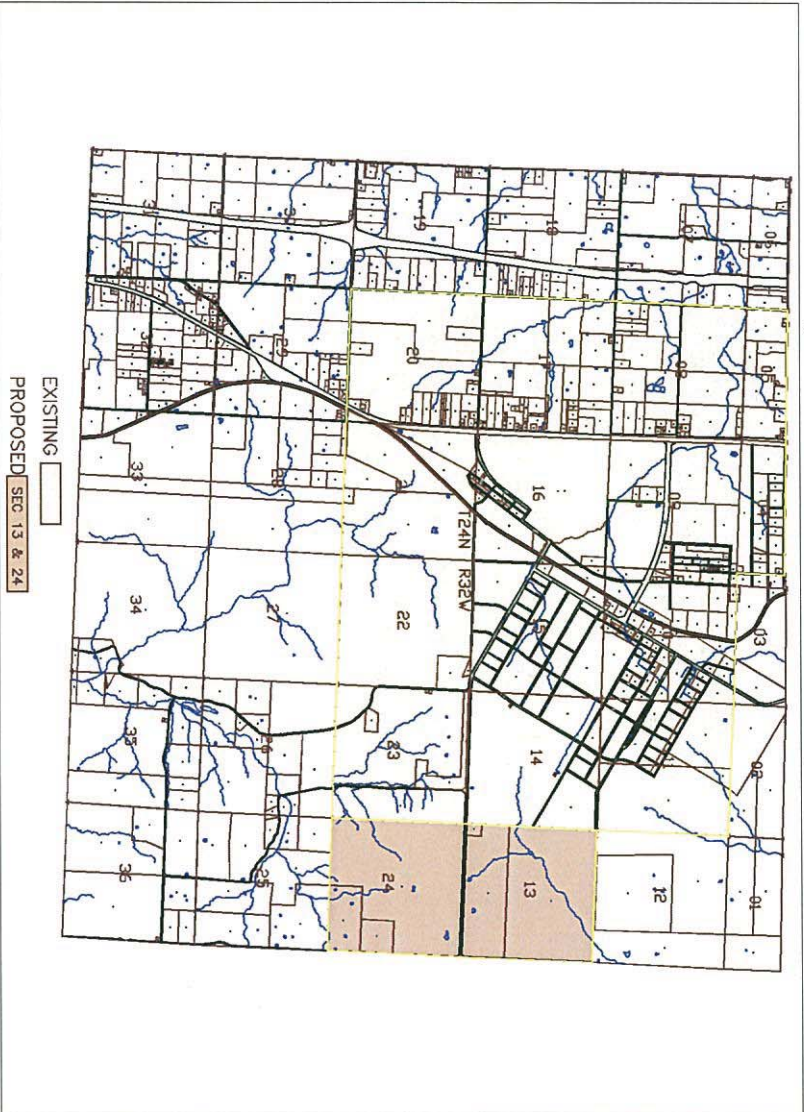




**NEWTON COUNTY**  
**SECTION 13 & 24, TOWNSHIP 24 NORTH, RANGE 32 WEST**

Appendix A



<b>MISSOURI GAS ENERGY</b> ENGINEERING DEPARTMENT 207 PINE ST KENNETT, MISSOURI 65708			
NEOSHO, MO (FORT CROWDER) MISSOURI GAS ENERGY CERTIFICATION REQUEST			
DWG#	DESCRIPTION	DATE BY	SHEET NO.
1			1 OF 1
2			
3			
REV#	DESIGNED BY		
L FENSKE	L FENSKE		
DATE	SCALE		
03/12/2013	N.T.S.		