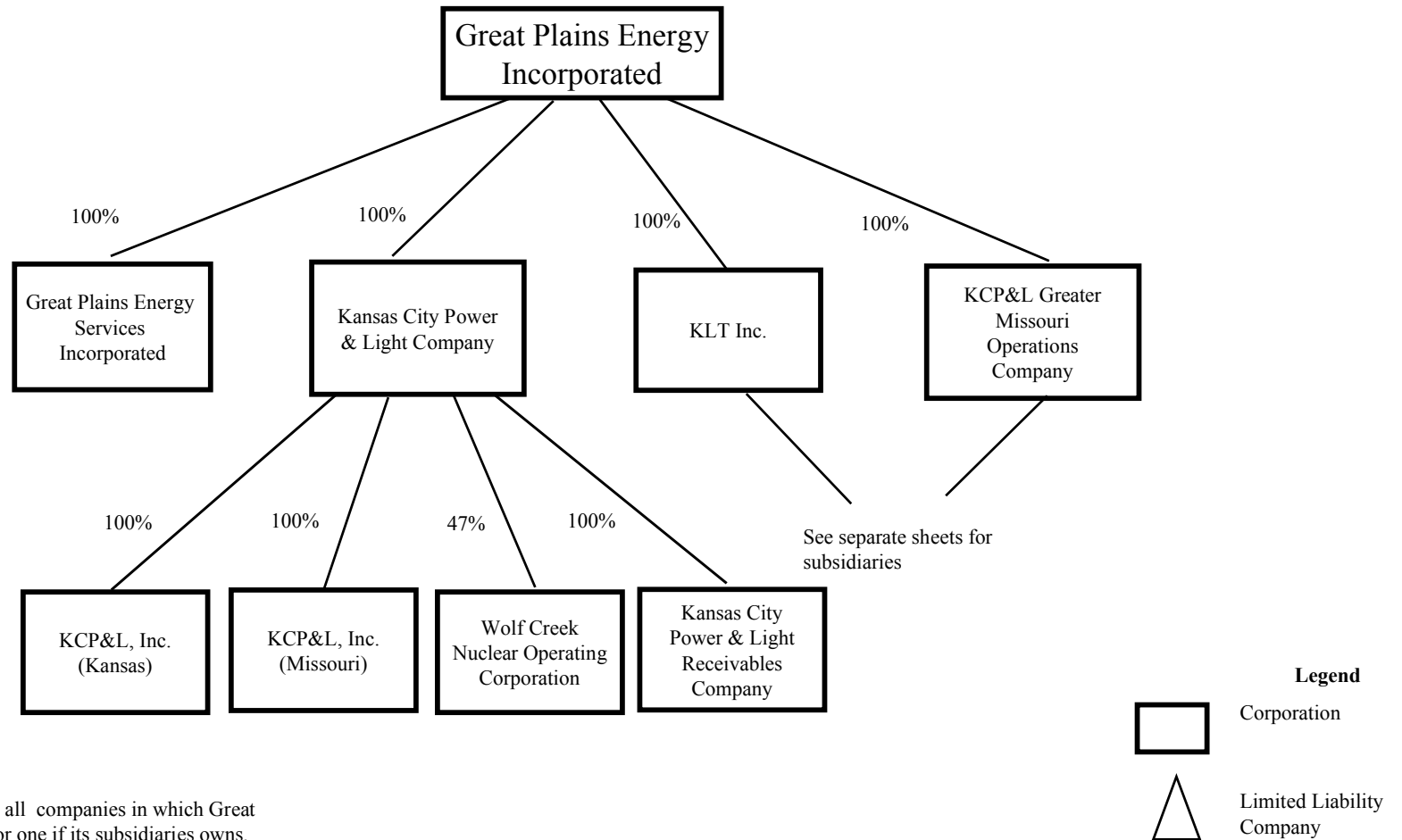


GREAT PLAINS ENERGY INCORPORATED

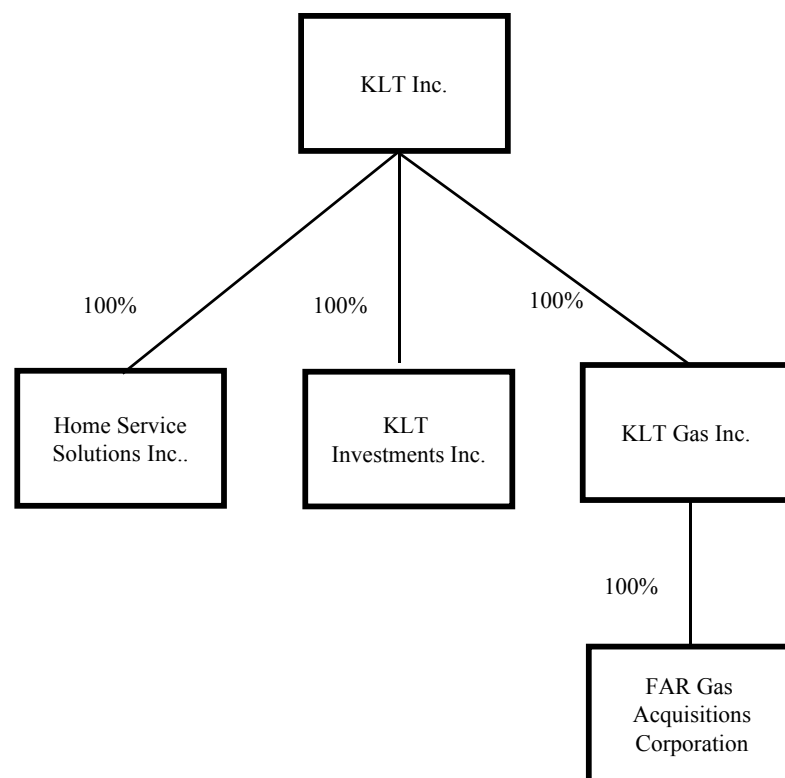
Organizational Structure



Note: This document shows all companies in which Great Plains Energy Incorporated or one of its subsidiaries owns, controls or holds with power to vote, directly or indirectly, 10% or more of the voting securities. Interests with no or limited voting rights in general or limited partnerships are either omitted or described in notes.

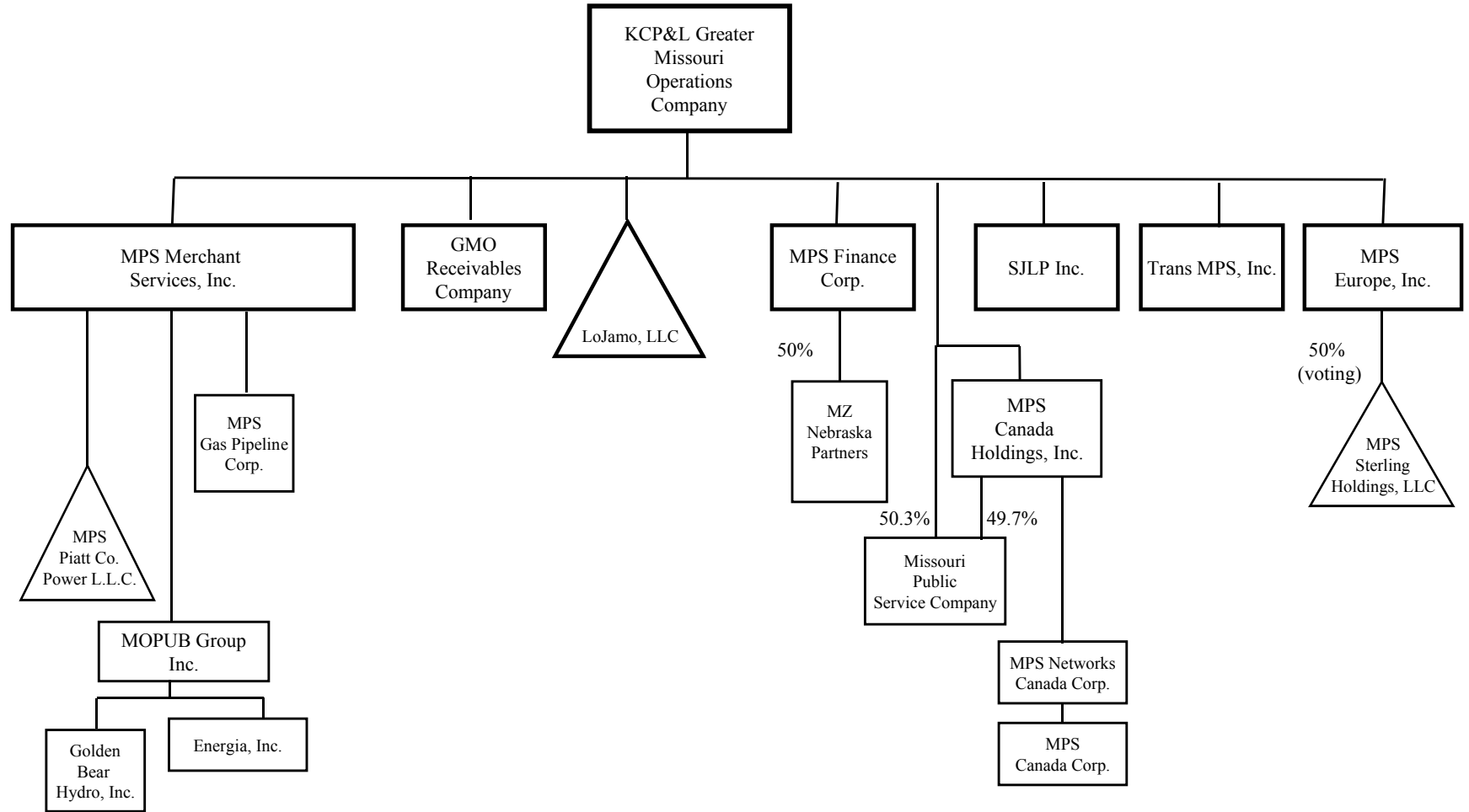
GREAT PLAINS ENERGY INCORPORATED

Organizational Structure



GREAT PLAINS ENERGY INCORPORATED

Organizational Structure



Notes: (a) All wholly-owned companies except where indicated
 (b) Golden Bear Hydro, Inc. and Energia, Inc. hold a 0.5% general partnership and 99.0% limited partnership interest, respectively, in G.B. Hydro Partners L.P. which in turn holds a 50% partnership interest in Mega Renewables.

May 11, 2010

GREAT PLAINS ENERGY INCORPORATED

Organizational Structure

Revisions to Organizational Structure Chart:

1. Original Issuance on September 22, 2004
2. Revised on February 11, 2005 to reformat and to reflect sale of Worry Free Service, Inc. and dissolution of Forest City Gathering, LLC.
3. Revised on March 14, 2005, to reflect that KLT Gas Inc. is not an Energy Affiliate.
4. Revised on October 12, 2005, to reflect dissolution of Advanced Measurement Solutions, Inc.
5. Revised on October 19, 2005, to reflect dissolution of Municipal Solutions, L.L.C. and Telemetry Solutions, L.L.C.
6. Revised on October 25, 2005, to reflect dissolution of Copier Solutions, LLC.
7. Revised on December 28, 2005 to reflect dissolution of Great Plains Power Incorporated and to correct the name of KLT Energy Services on slide 5.
8. Revised on May 24, 2006, to reflect dissolution of KLT Gas Operating Company.
9. Revised on June 6, 2006, to reflect merger of KLT Investments II Inc. into KLT Inc.
10. Revised on June 12, 2006, to reflect dissolution of Apache Canyon Gas, L.L.C.
11. Revised on June 26, 2006, to reflect merger of Forest City, LLC into KLT Gas Inc.
12. Revised on April 23, 2007, to reflect dissolution of Patrick KLT Gas, LLC.
13. Revised on June 11, 2007, to reflect issuance of stock by Gregory Acquisition Corp. to Great Plains Energy. Deleted slide depicting only KLT Inc. – KLT Telecom Inc.
14. Revised on October 1, 2007, to reflect creation of Strategic Receivables, LLC.
15. Revised on January 2, 2008, to reflect transfer of Home Service Solutions Inc. from Kansas City Power & Light to KLT Inc.
16. Revised on June 5, 2008, to reflect the sale of Strategic Energy and the dissolution of Custom Energy Holdings, L.L.C.
17. Revised on July 7, 2008, to reflect the merger of Innovative Energy Consultants, Inc. and KLT Energy Services Inc. into KLT Inc.
18. Revised on July 22, 2008, to reflect the acquisition of Aquila, Inc., effective July 14, 2008.
19. Revised on October 23, 2008, to reflect name changes of Aquila, Inc. and certain subsidiaries effective October 17, 2008.
20. Revised on December 31, 2008 to reflect dissolution of KLT Telecom Inc. effective December 31, 2008.
21. Revised on April 6, 2009, to reflect dissolution of Aquila Energy (Bermuda) Ltd. effective December 19, 2008, and to correct ownership interests in Missouri Public Service Company.
22. Revised on July 2, 2009, to reflect merger of MPS NZ, Limited into Trans MPS, Inc. on June 18, 2009, and the issuance of stock by KCP&L, Inc. (a Missouri corporation) and KCP&L, Inc. (a Kansas corporation) to Kansas City Power & Light Company.
23. Revised on November 20, 2009, to reflect merger of MPS Colorado, LLC into Trans MPS, Inc. effective August 21, 2009, termination of Levasy Jagdverein, LLC effective August 26, 2009, the pending liquidation of Aquila Energy Re Ltd., and clarification of interests in G.B. Hydro Partners, L.P. and Mega Renewables.
24. Revised on December 1, 2009, to reflect creation of GMO Receivables Company as a subsidiary of KCP&L Greater Missouri Operations Company.
25. Revised on December 7, 2009, to reflect the dissolution of Aquila Energy Re Ltd.
26. Revised on May 11, 2010, to reflect the merger of Everest Global Technologies Group LLC and Everest Holdings II, LLC into Trans MPS, Inc. effective March 31, 2010.

May 11, 2010