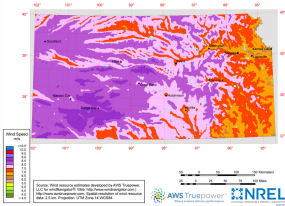
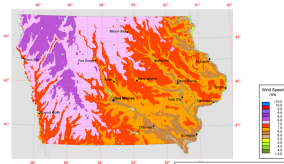


Kansas - Annual Average Wind Speed at 80 m



Iowa - Annual Average Wind Speed at 80 m



Source: Wind resource estimates developed by AWS TruPower, LLC for windNavigator® (web: <http://www.windnavigator.com/>) <http://www.aws-trupower.com>. Spatial resolution of wind resource data: 2.0 km. Projection: UTM Zone 18N WGS84.



AWS TruPower
Wind energy delivery performance



NREL
NATIONAL RENEWABLE ENERGY LABORATORY