

Company Name: KCPL  
Case Description: MO-Aquila Acquisition  
Case: EM-2007-0374

Response to Schallenberg Bob Interrogatories – Set MPSC\_20070905  
Date of Response:  
Responding Witness:

Question No. :0342

Please provide copies of all documents that GPE, KCPL, Aquila, and their representatives provided to Mr. Zabors during the period January 1, 2006 through December 31, 2007.

RESPONSE:

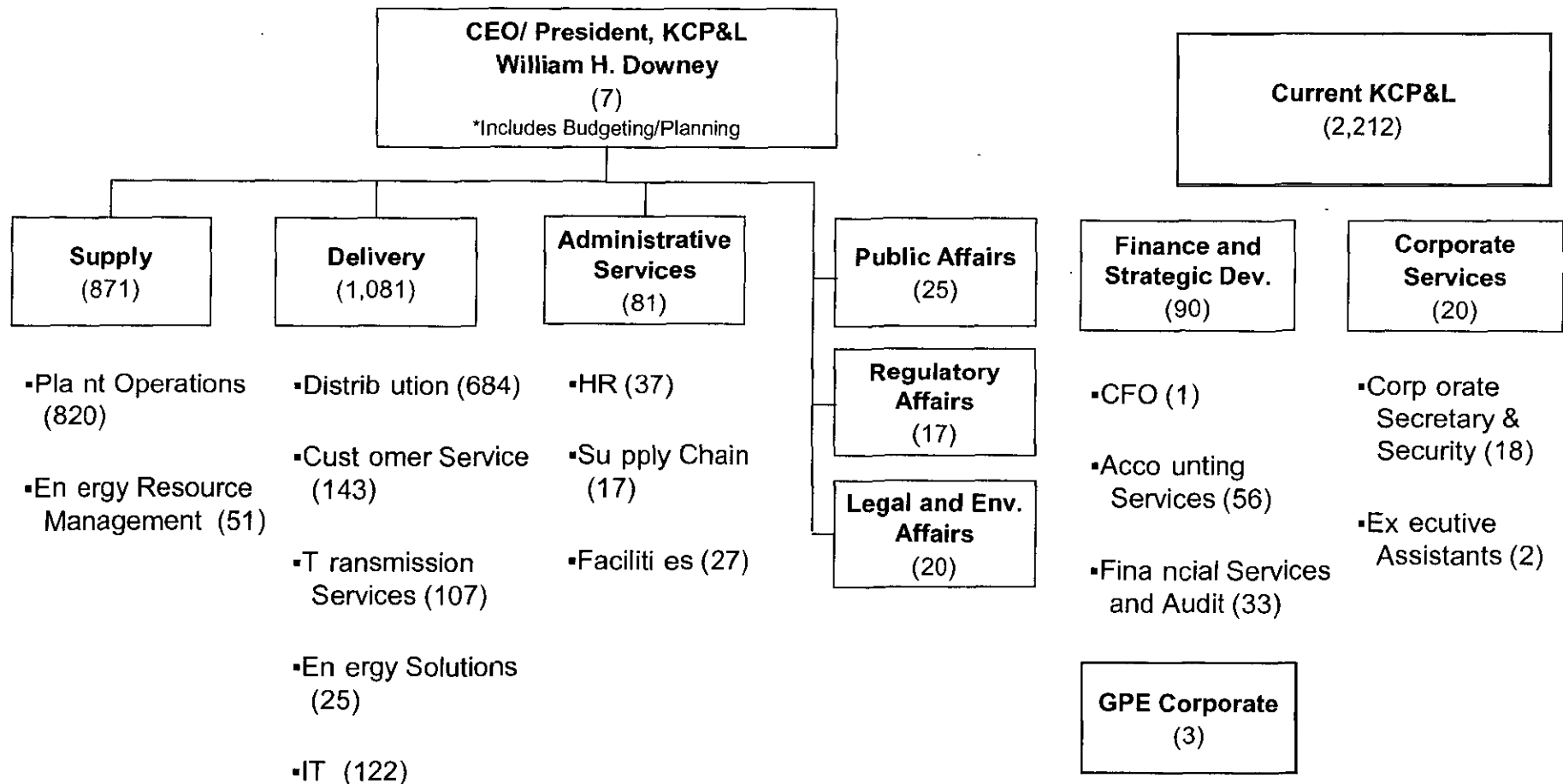
Documents received by Mr. Zabors from January 1, 2006 through September 17, 2007 will be sent on CD as they are too large to load into EFIS.

The CD will contain 169 documents considered HIGHLY CONFIDENTIAL and 273 public documents.

Staff Exhibit No. 131  
Case No(s) EM-2007-0374  
Date 4-28-08 Rptr XF

# Current KCP&L Organization Model

*Note: This is a functional organization chart. It does not reflect relationships among legal entities*



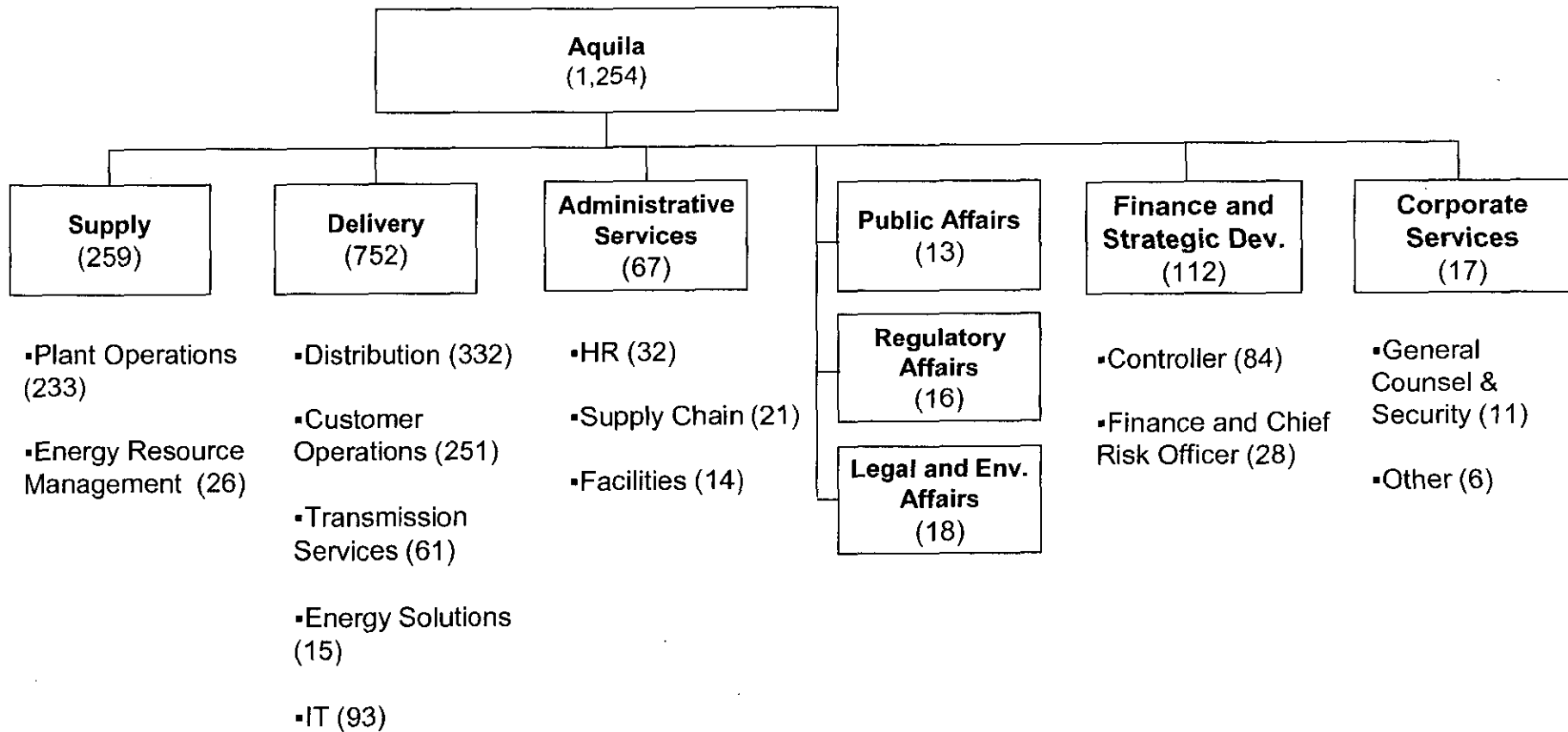
Based on KCPL Head Count as of 6/10/07

**Legend:** (Existing/ Incremental/ Combined)

Note: FTE counts include regular employees only – both part-time and full-time, excludes temps.

# Current Aquila MO Allocated Staffing Mapped to KCPL Organizational Entities

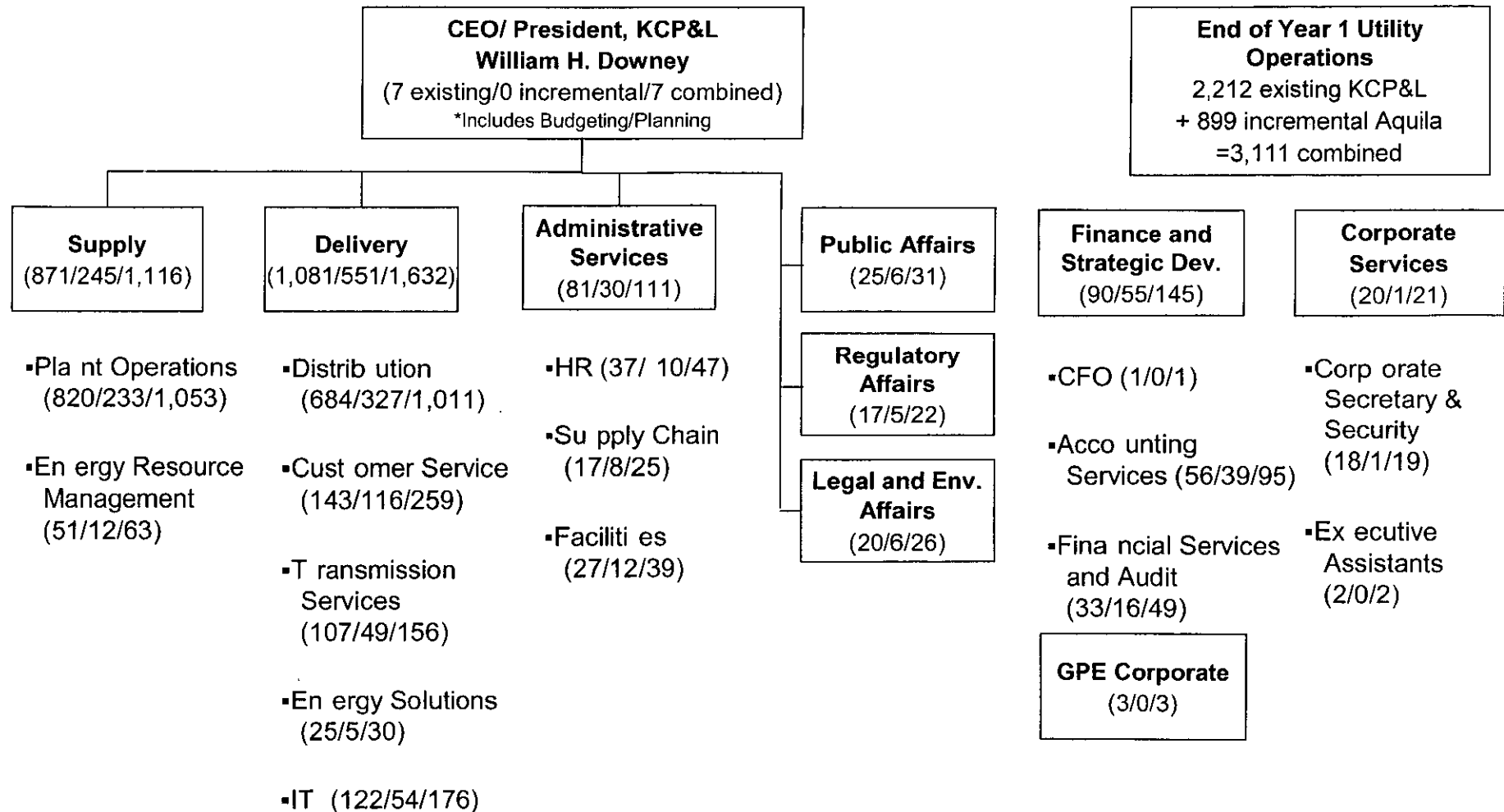
*Note: This is a functional organization chart. It does not reflect relationships among legal entities*



Based on Aquila Head Count as of 12/31/06

# Total Utility Operations of KCP&L (NewCo) on Day 1

*Note: This is a functional organization chart. It does not reflect relationships among legal entities*



**Legend:** (Existing/ Incremental/ Combined)

Note: FTE counts include regular employees only – both part-time and full-time, excludes temps.