

FORM NO. 13

P.S.C MO NO. 9

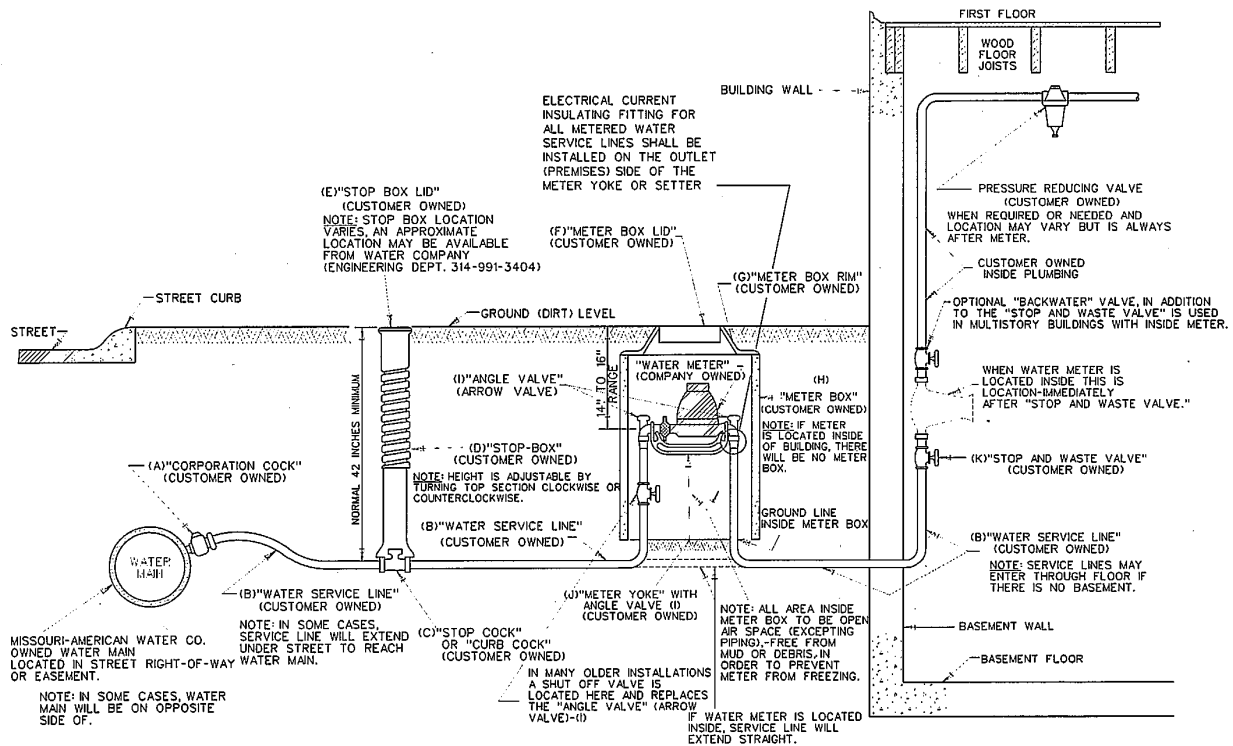
Original Appendix Sheet No. 1

Missouri-American Water Company
Name of Issuing Corporation

For

Missouri Service Area (St. Louis Operations only)
Community, Town or City

**TYPICAL CROSS-SECTION – DOMESTIC WATER SERVICE LINE
(RESIDENTIAL OR COMMERCIAL PREMISES)**



* Indicates new rate or text
+ Indicates change

DATE OF ISSUE: October 30, 2009

DATE OF EFFECTIVE: November 29, 2009

ISSUED BY: Frank Kartmann, President
727 Craig Road, St. Louis, MO 63141

FORM NO. 13

P.S.C MO NO. 9

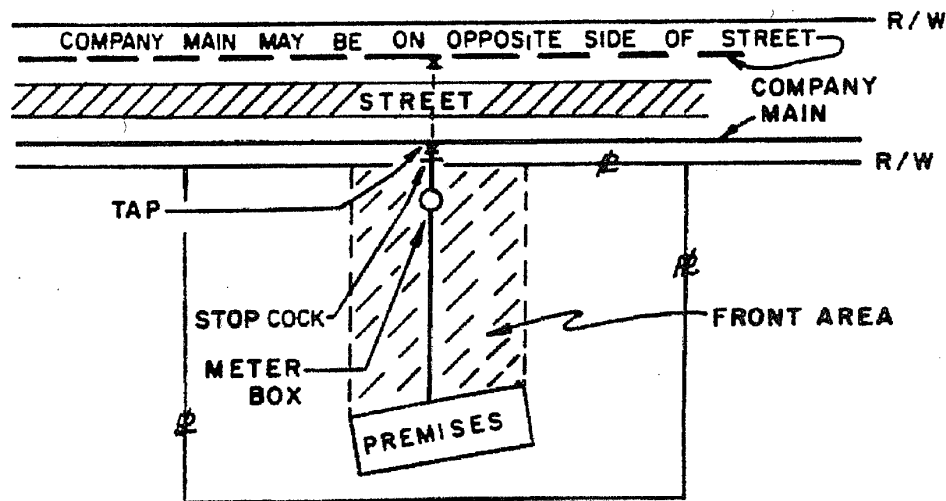
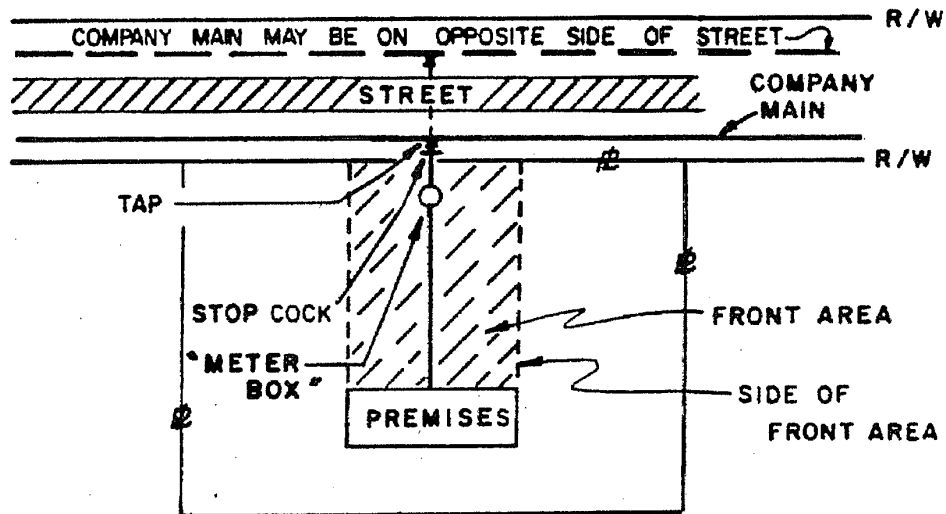
Original Appendix Sheet No. 2

Missouri-American Water Company
Name of Issuing Corporation

For

Missouri Service Area
Community, Town or City

INSTALLATION REQUIREMENT FOR WATER SERVICE LINE – COMPANY MAIN
PARALLEL TO STREET – PARALLEL TO FACE OF PREMISES



* Indicates new rate or text

+ Indicates change

DATE OF ISSUE: October 30, 2009

DATE OF EFFECTIVE: November 29, 2009

ISSUED BY: Frank Kartmann, President
727 Craig Road, St. Louis, MO 63141

FORM NO. 13

P.S.C MO NO. 9

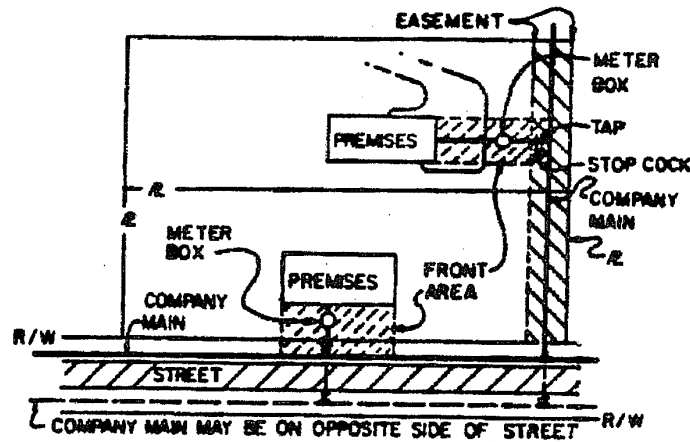
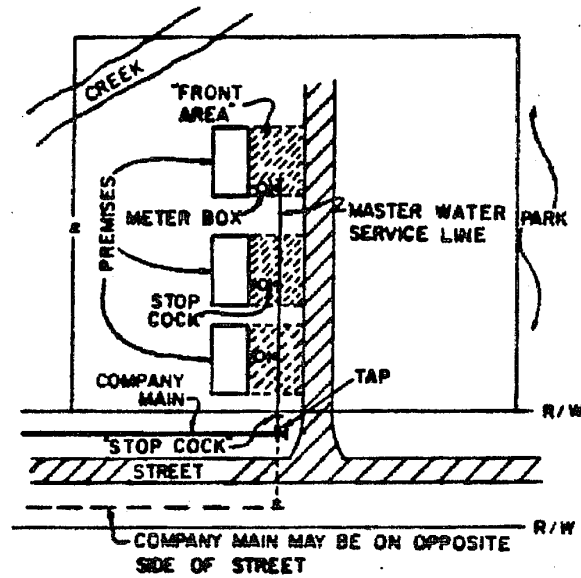
Original Appendix Sheet No. 3

Missouri-American Water Company
Name of Issuing Corporation

For

Missouri Service Area
Community, Town or City

INSTALLATION REQUIREMENT FOR WATER SERVICE LINE – COMPANY MAIN
PARALLEL TO STREET – PARALLEL TO FACE OF PREMISES



* Indicates new rate or text

+ Indicates change

DATE OF ISSUE: October 30, 2009

DATE OF EFFECTIVE: November 29, 2009

ISSUED BY: Frank Kartmann, President
727 Craig Road, St. Louis, MO 63141

FORM NO. 13

P.S.C MO NO. 9

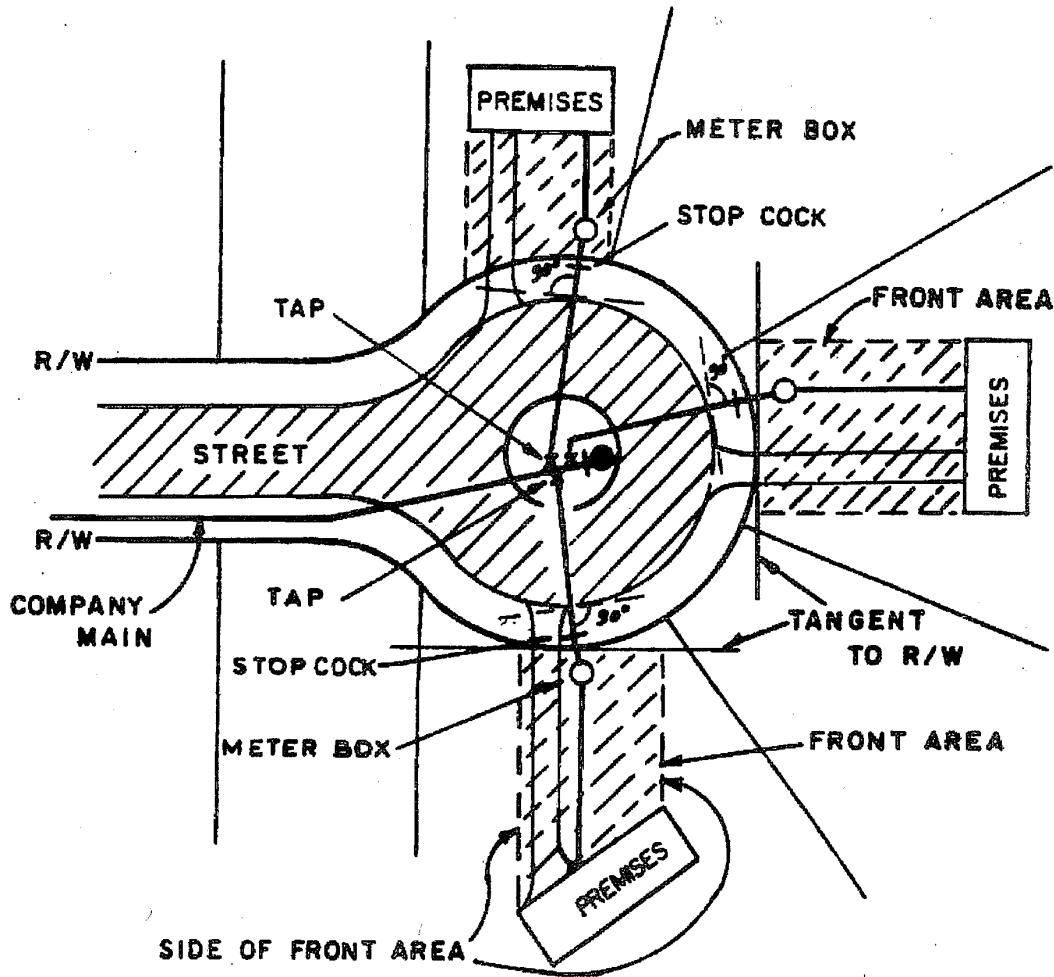
Original Appendix Sheet No. 4

Missouri-American Water Company
Name of Issuing Corporation

For

Missouri Service Area
Community, Town or City

INSTALLATION REQUIREMENTS FOR WATER SERVICE LINE – COMPANY MAIN NOT PARALLEL TO FACE OF PREMISES



* Indicates new rate or text
+ Indicates change

DATE OF ISSUE: October 30, 2009

DATE OF EFFECTIVE: November 29, 2009

ISSUED BY: Frank Kartmann, President
727 Craig Road, St. Louis, MO 63141

FORM NO. 13

P.S.C MO NO. 9

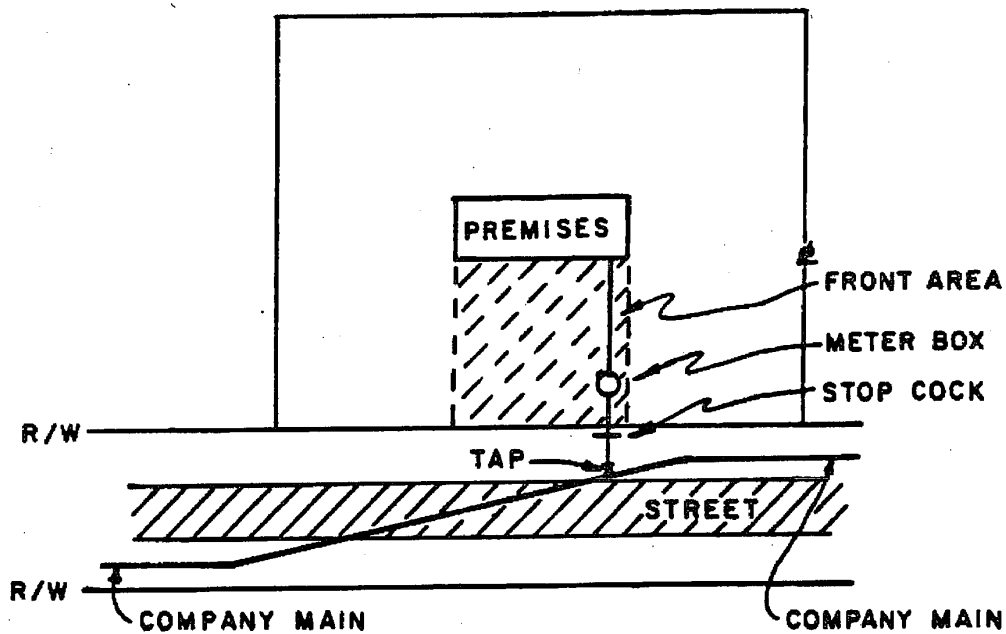
Original Appendix Sheet No. 5

Missouri-American Water Company
Name of Issuing Corporation

For

Missouri Service Area
Community, Town or City

**INSTALLATION REQUIREMENTS FOR WATER SERVICE LINE – COMPANY MAIN NOT
PARALLEL TO STREET – NOT PARALLEL TO FACE OF PREMISES**



* Indicates new rate or text
+ Indicates change

DATE OF ISSUE: October 30, 2009

DATE OF EFFECTIVE: November 29, 2009

ISSUED BY: Frank Kartmann, President
727 Craig Road, St. Louis, MO 63141

FORM NO. 13

P.S.C MO NO. 9

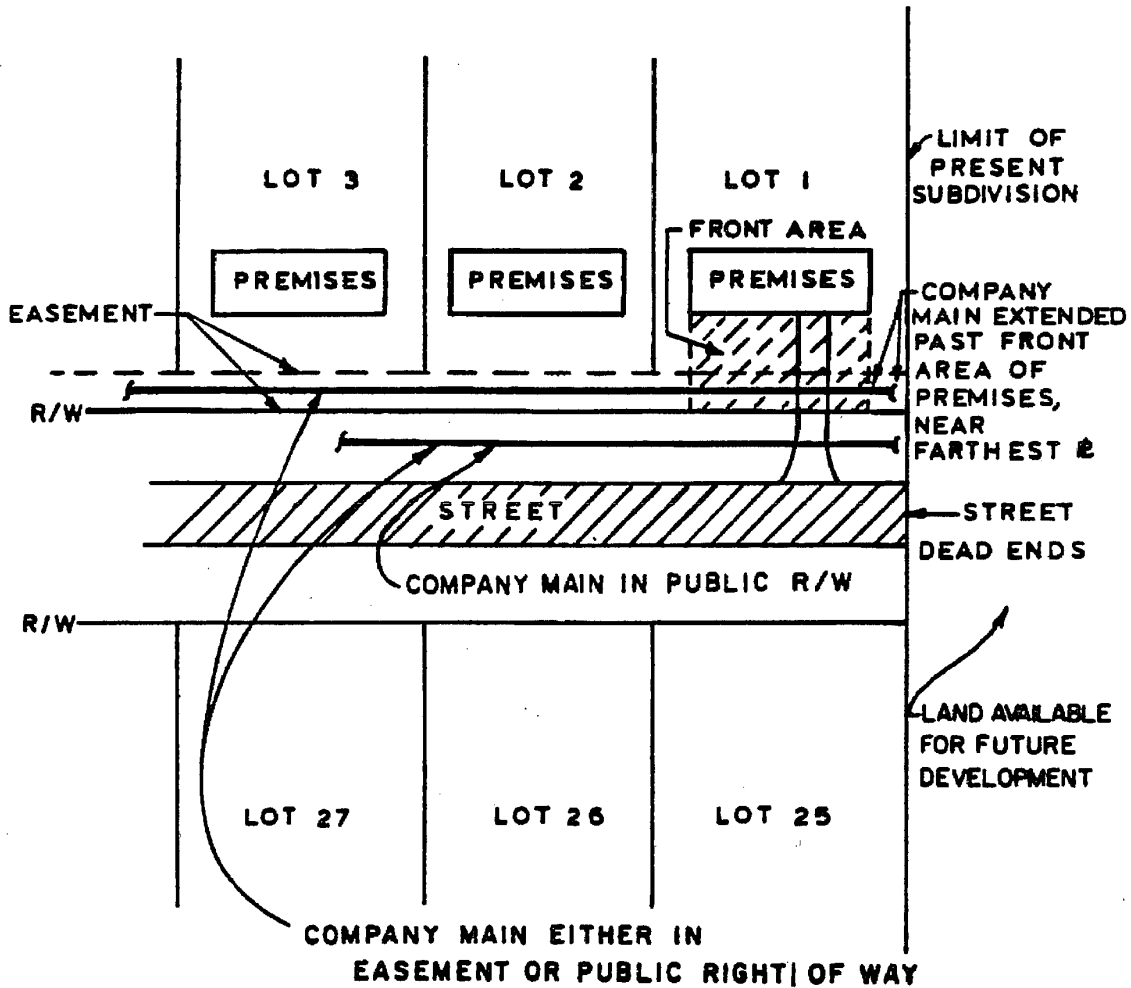
Original Appendix Sheet No. 6

Missouri-American Water Company
Name of Issuing Corporation

For

Missouri Service Area
Community, Town or City

**MAIN EXTENSION TERMINATION
NEW STREETS (EASEMENTS) – MULTI-LOT RESIDENTIAL SUBDIVISION – LAST LOT**



* Indicates new rate or text
+ Indicates change

DATE OF ISSUE: October 30, 2009

DATE OF EFFECTIVE: November 29, 2009

ISSUED BY: Frank Kartmann, President
727 Craig Road, St. Louis, MO 63141

FORM NO. 13

P.S.C MO NO. 9

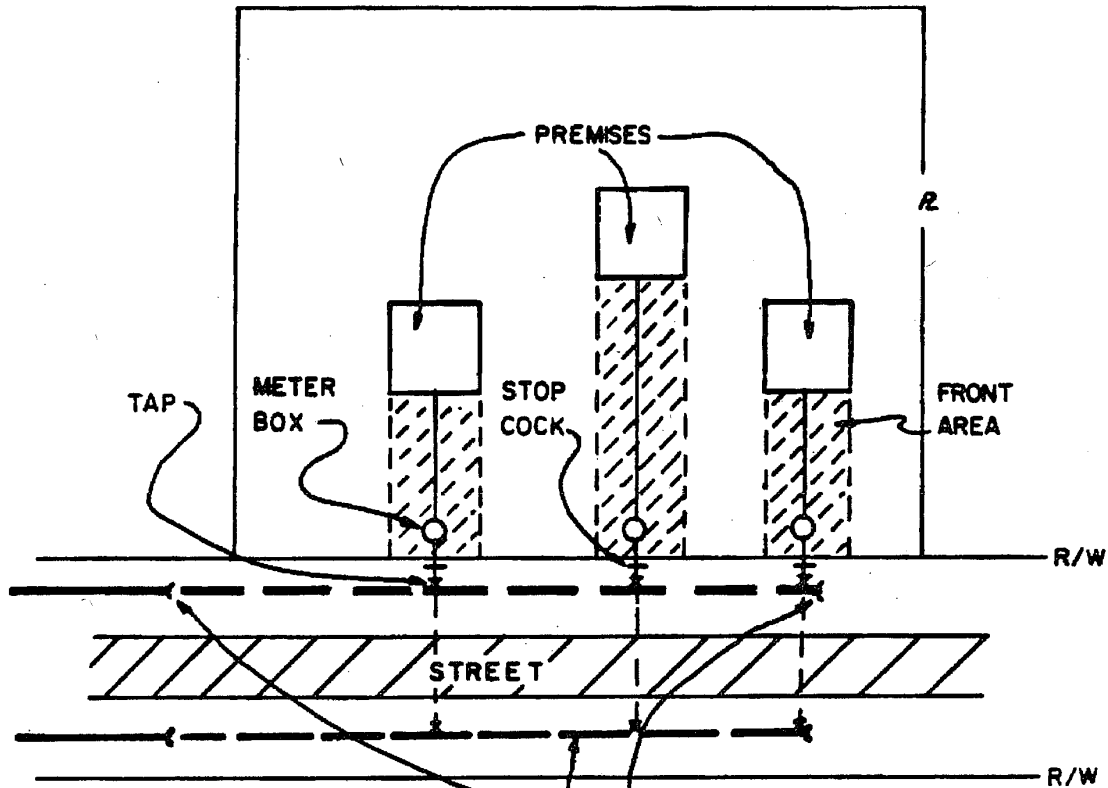
Original Appendix Sheet No. 7

Missouri-American Water Company
Name of Issuing Corporation

For

Missouri Service Area
Community, Town or City

**MAIN EXTENSION TERMINATION
EXISTING STREET (EASEMENT) – WATER SERVICE LINE TO INDIVIDUAL PREMISES**



COMPANY MAIN MAY BE ON
OPPOSITE SIDE OF STREET

REQUIRED COMPANY MAIN
EXTENSION - TO TERMINATE
OPPOSITE FRONT AREA OF
FARTHEST PREMISE TO BE
SERVED

* Indicates new rate or text
+ Indicates change

DATE OF ISSUE: October 30, 2009

DATE OF EFFECTIVE: November 29, 2009

ISSUED BY: Frank Kartmann, President
727 Craig Road, St. Louis, MO 63141

FORM NO. 13

P.S.C MO NO. 9

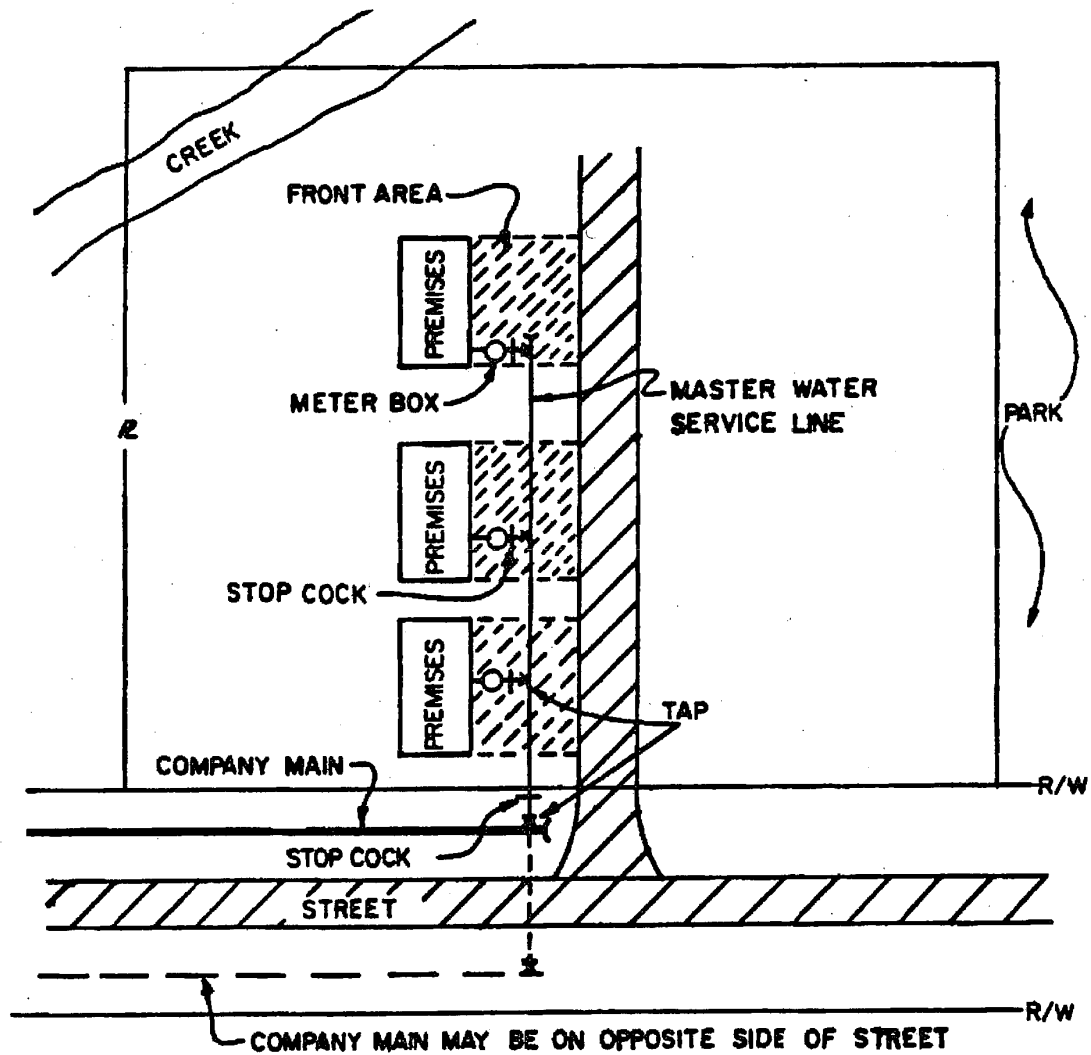
Original Appendix Sheet No. 8

Missouri-American Water Company
Name of Issuing Corporation

For

Missouri Service Area
Community, Town or City

INSTALLATION REQUIREMENT - MASTER WATER SERVICE LINE



* Indicates new rate or text

+ Indicates change

DATE OF ISSUE: October 30, 2009

DATE OF EFFECTIVE: November 29, 2009

ISSUED BY: Frank Kartmann, President
727 Craig Road, St. Louis, MO 63141

FORM NO. 13

P.S.C MO NO. 9

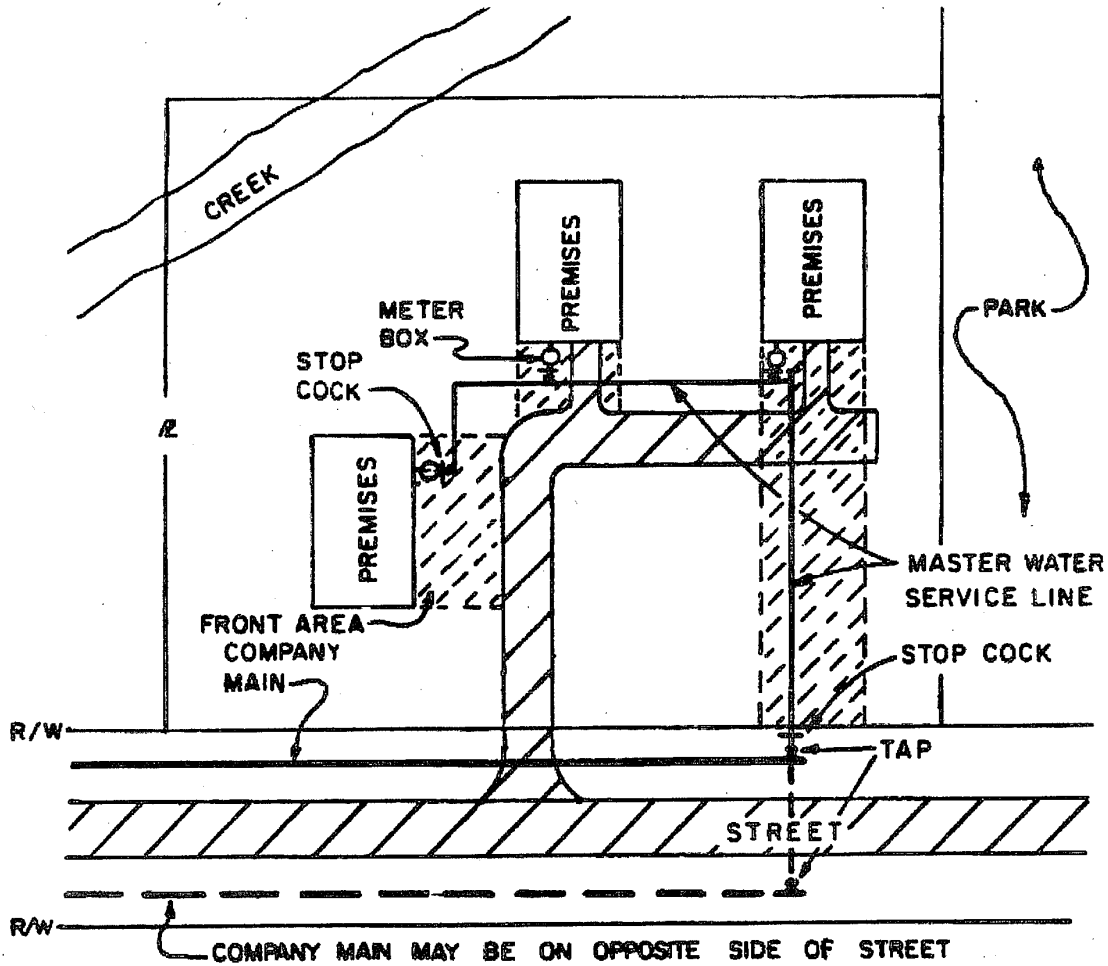
Original Appendix Sheet No. 9

Missouri-American Water Company
Name of Issuing Corporation

For

Missouri Service Area
Community, Town or City

INSTALLATION REQUIREMENT - MASTER WATER SERVICE LINE



* Indicates new rate or text
+ Indicates change

DATE OF ISSUE: October 30, 2009

DATE OF EFFECTIVE: November 29, 2009

ISSUED BY: Frank Kartmann, President
727 Craig Road, St. Louis, MO 63141

FORM NO. 13

P.S.C MO NO. 9

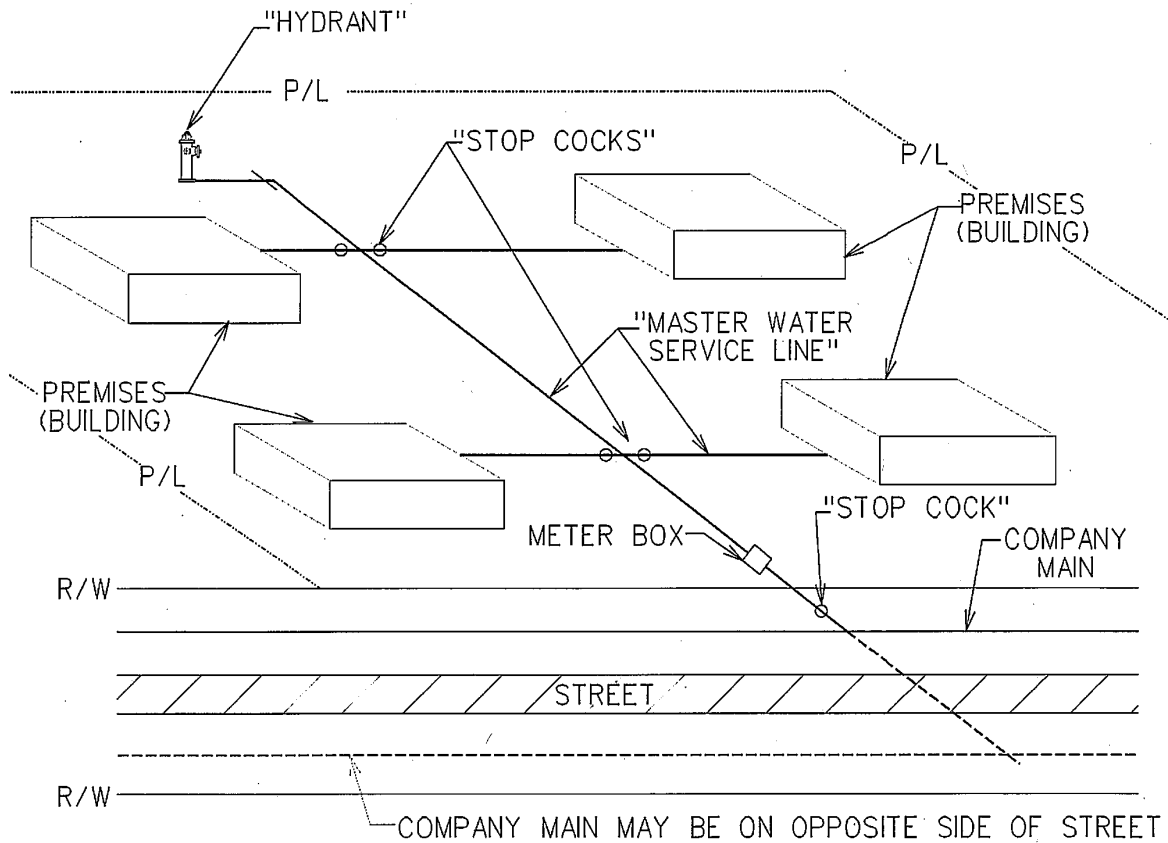
Original Appendix Sheet No. 10

Missouri-American Water Company
Name of Issuing Corporation

For

Missouri Service Area
Community, Town or City

**INSTALLATION REQUIREMENTS – MASTER WATER SERVICE LINE
COMMERCIAL OR MUTLI-FAMILY RESIDENTIAL – SINGLE OR MUTLI-STORY BUILDINGS
SERVED BY A METER(S)**



* Indicates new rate or text
+ Indicates change

DATE OF ISSUE: October 30, 2009

DATE OF EFFECTIVE: November 29, 2009

ISSUED BY: Frank Kartmann, President
727 Craig Road, St. Louis, MO 63141

FORM NO. 13

P.S.C MO NO. 9

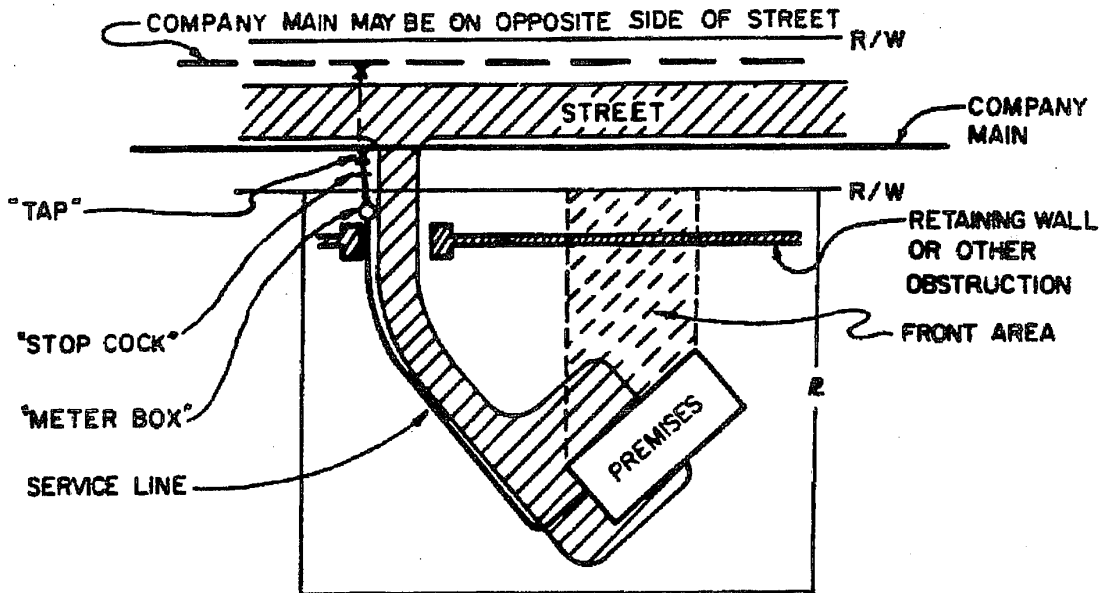
Original Appendix Sheet No. 11

Missouri-American Water Company
Name of Issuing Corporation

For

Missouri Service Area
Community, Town or City

**ALTERNATE INSTALLATION REQUIREMENTS – DOMESTIC WATER SERVICE LINE –
RESIDENTIAL SINGLE-FAMILY DWELLING**



* Indicates new rate or text

+ Indicates change

DATE OF ISSUE: October 30, 2009

DATE OF EFFECTIVE: November 29, 2009

ISSUED BY: Frank Kartmann, President
727 Craig Road, St. Louis, MO 63141

FORM NO. 13

P.S.C MO NO. 9

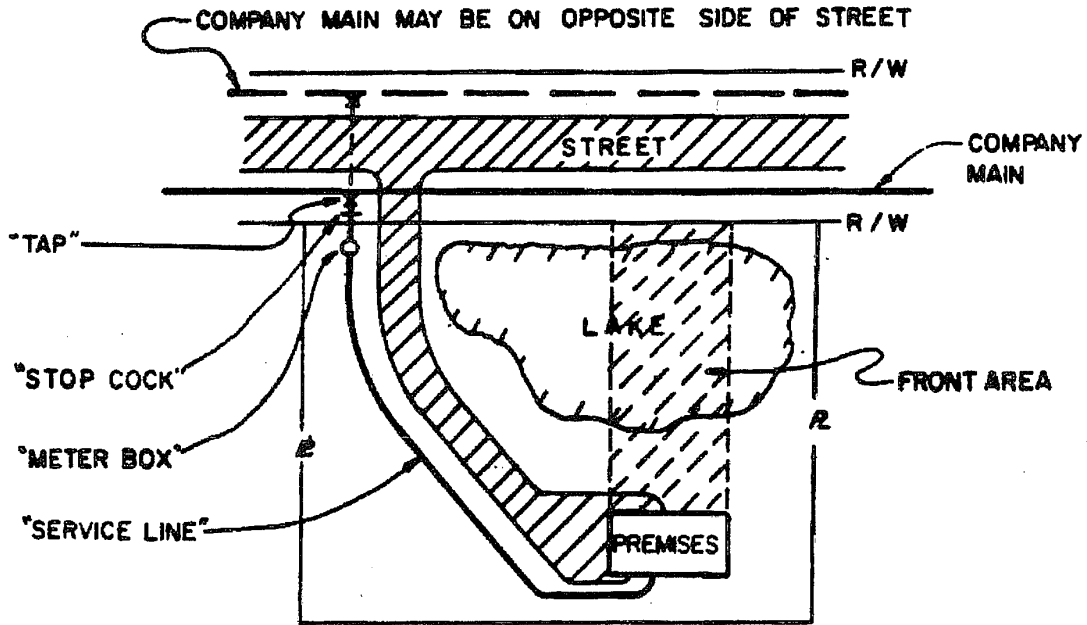
Original Appendix Sheet No. 12

Missouri-American Water Company
Name of Issuing Corporation

For

Missouri Service Area
Community, Town or City

ALTERNATE INSTALLATION REQUIREMENTS – DOMESTIC WATER SERVICE LINE –
RESIDENTIAL SINGLE-FAMILY DWELLING



* Indicates new rate or text

+ Indicates change

DATE OF ISSUE: October 30, 2009

DATE OF EFFECTIVE: November 29, 2009

ISSUED BY: Frank Kartmann, President
727 Craig Road, St. Louis, MO 63141

FORM NO. 13

P.S.C MO NO. 9

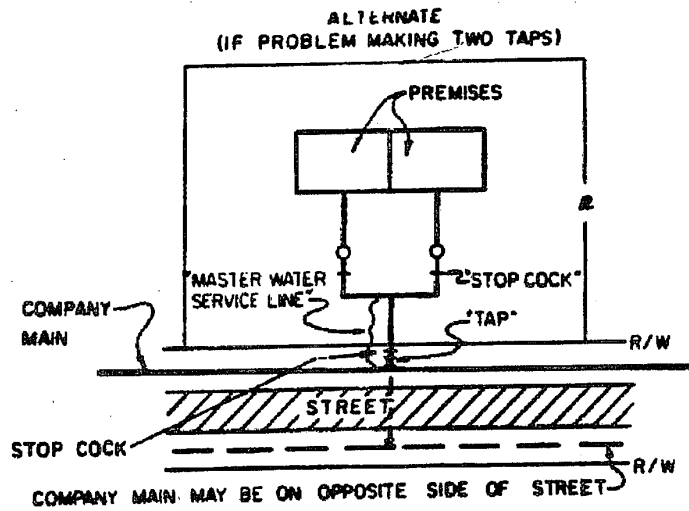
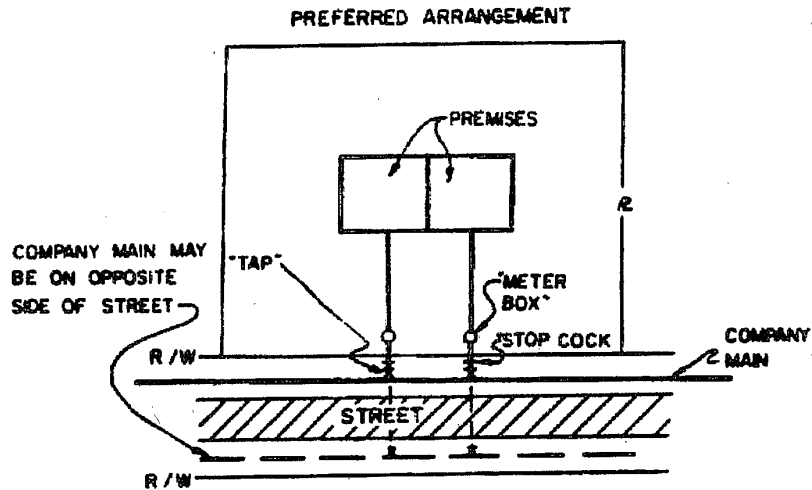
Original Appendix Sheet No. 13

Missouri-American Water Company
Name of Issuing Corporation

For

Missouri Service Area
Community, Town or City

**INSTALLATION REQUIREMENTS – DOMESTIC WATER SERVICE LINE
RESIDENTIAL - DUPLEX – HALVES OWNED OR RENTED**



* Indicates new rate or text

+ Indicates change

DATE OF ISSUE: October 30, 2009

DATE OF EFFECTIVE: November 29, 2009

ISSUED BY: Frank Kartmann, President
727 Craig Road, St. Louis, MO 63141

FORM NO. 13

P.S.C MO NO. 9

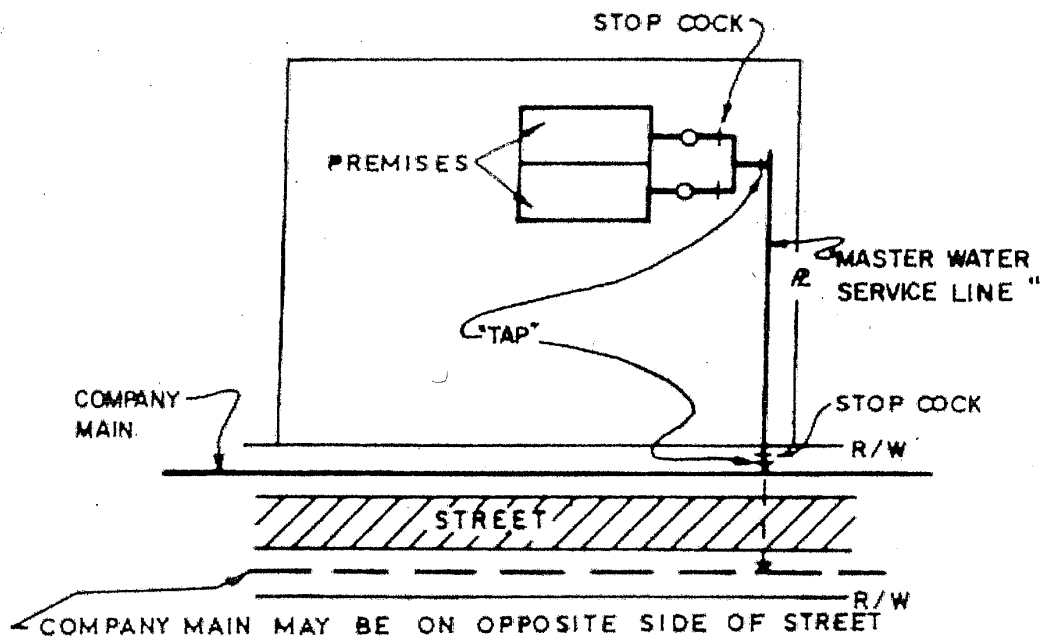
Original Appendix Sheet No. 14

Missouri-American Water Company
Name of Issuing Corporation

For

Missouri Service Area
Community, Town or City

**INSTALLATION REQUIREMENTS – DOMESTIC WATER SERVICE LINE
RESIDENTIAL DUPLEX – HALVES OWNED OR RENTED**



* Indicates new rate or text
+ Indicates change

DATE OF ISSUE: October 30, 2009

DATE OF EFFECTIVE: November 29, 2009

ISSUED BY: Frank Kartmann, President
727 Craig Road, St. Louis, MO 63141

FORM NO. 13

P.S.C MO NO. 9

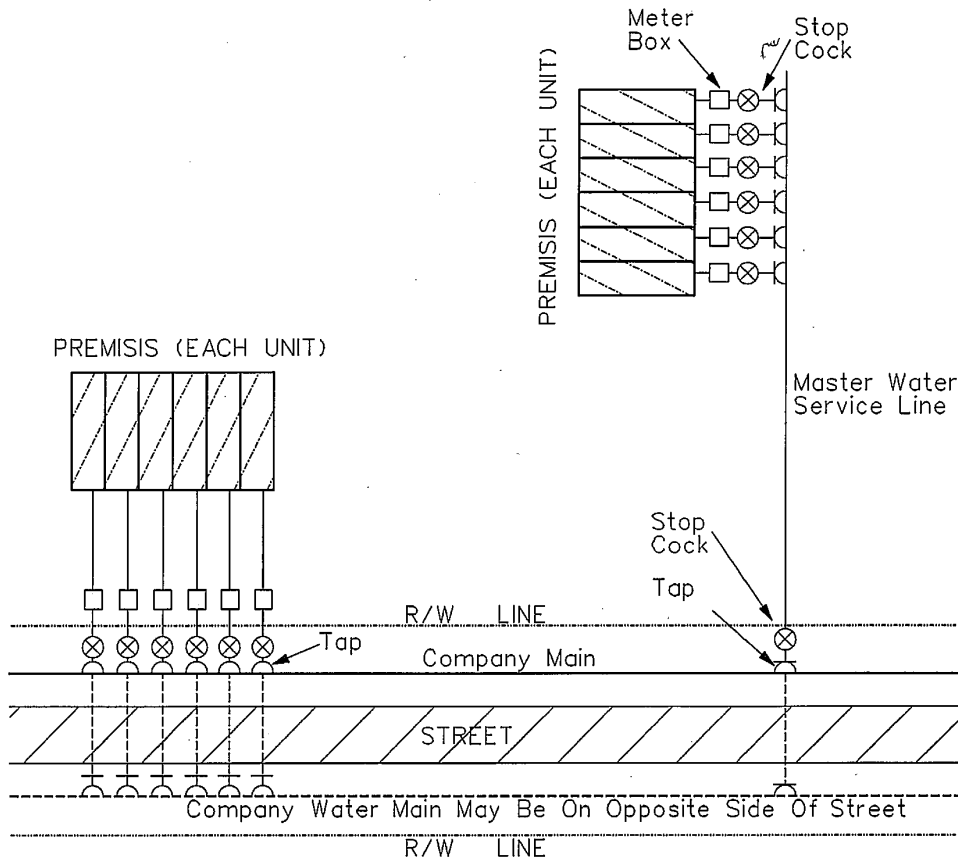
Original Appendix Sheet No. 15

Missouri-American Water Company
Name of Issuing Corporation

For

Missouri Service Area
Community, Town or City

**INSTALLATION REQUIREMENTS – DOMESTIC WATER SERVICE LINE – RESIDENTIAL
MULTI-FAMILY; MULTI-LEVEL BUILDINGS; LIVING QUARTER SEPARATELY OWNED**



NOTE: If responsibility for payment of water service rests with a single entity, such as a condominium association, then water service to each building could be through one meter.

* Indicates new rate or text
+ Indicates change

DATE OF ISSUE: October 30, 2009

DATE OF EFFECTIVE: November 29, 2009

ISSUED BY: Frank Kartmann, President
727 Craig Road, St. Louis, MO 63141

FORM NO. 13

P.S.C MO NO. 9

Original Appendix Sheet No. 16

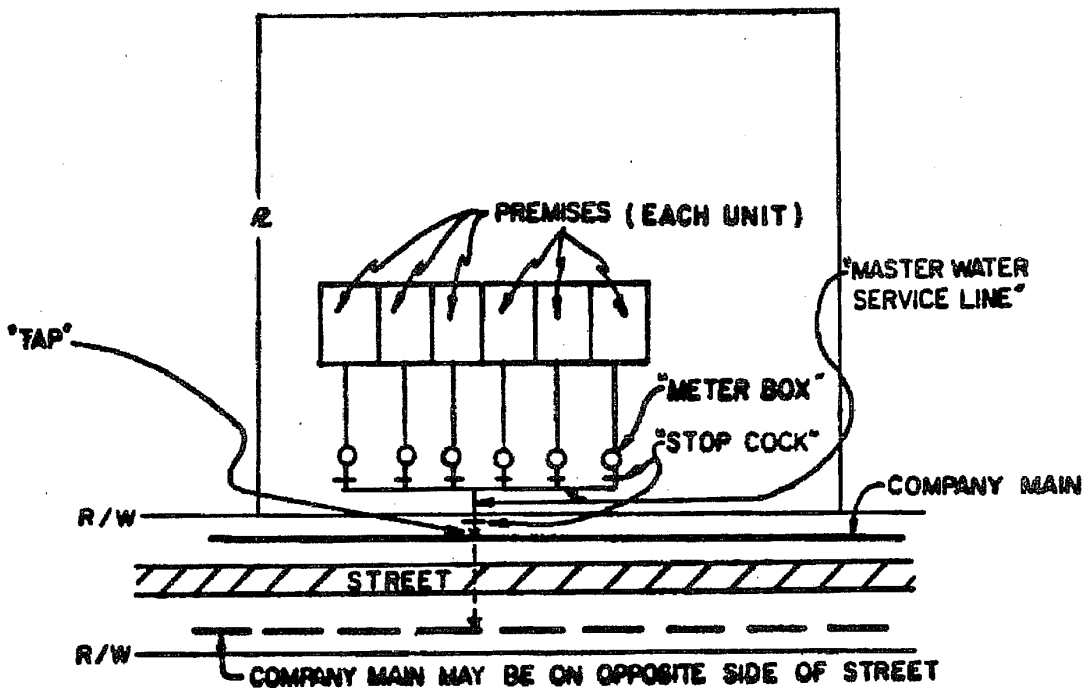
Missouri-American Water Company
Name of Issuing Corporation

For

Missouri Service Area
Community, Town or City

**INSTALLATION REQUIREMENTS – DOMESTIC WATER SERVICE LINE – RESIDENTIAL
MULTI-FAMILY; MULTI-LEVEL BUILDINGS – LIVING QUARTERS SEPARATELY OWNED**

**ALTERNATE ARRANGEMENT
(IF PROBLEM MAKING MULTIPLE TAPS)**



Note: If responsibility for payment of water service rests with a single entity, such as a condominium association, then water service to each building could be through one meter.

* Indicates new rate or text

+ Indicates change

DATE OF ISSUE: October 30, 2009

DATE OF EFFECTIVE: November 29, 2009

ISSUED BY: Frank Kartmann, President
727 Craig Road, St. Louis, MO 63141

FORM NO. 13

P.S.C MO NO. 9

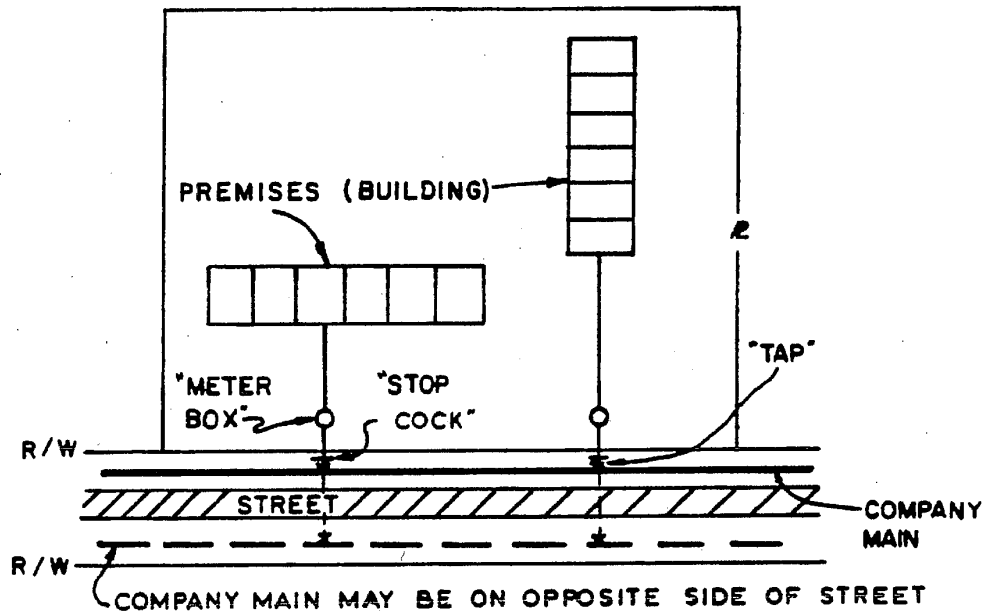
Original Appendix Sheet No. 17

Missouri-American Water Company
Name of Issuing Corporation

For /

Missouri Service Area
Community, Town or City

**INSTALLATION REQUIREMENTS – DOMESTIC WATER SERVICE LINE – RESIDENTIAL
MULTI-FAMILY; MULTI-LEVEL BUILDINGS – LIVING QUARTERS RENTED**



* Indicates new rate or text

+ Indicates change

DATE OF ISSUE: October 30, 2009

DATE OF EFFECTIVE: November 29, 2009

ISSUED BY: Frank Kartmann, President
727 Craig Road, St. Louis, MO 63141

FORM NO. 13

P.S.C MO NO. 9

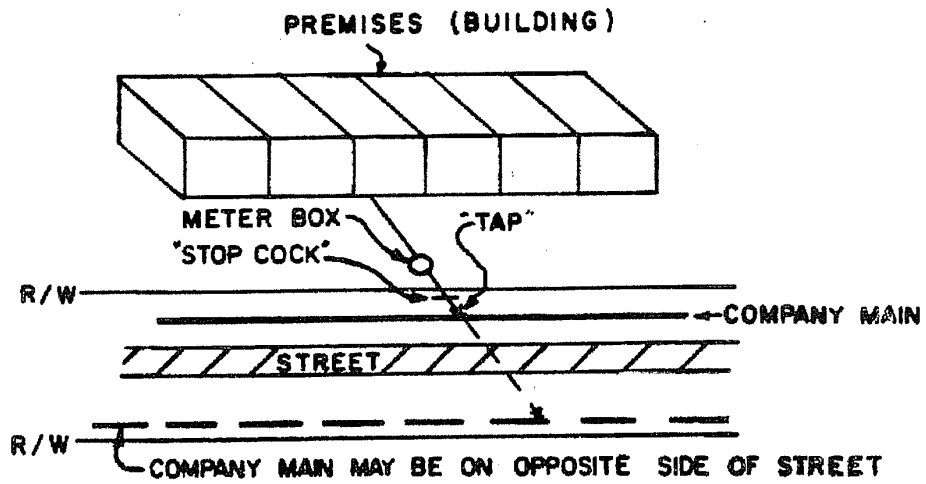
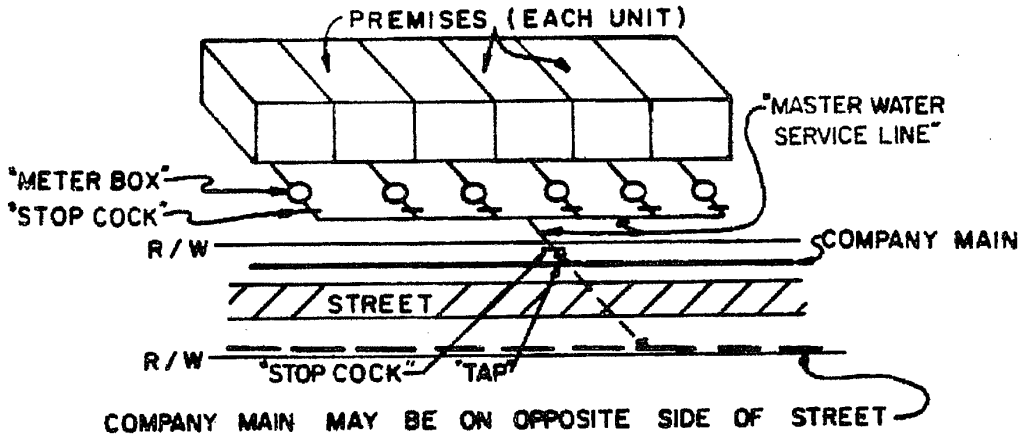
Original Appendix Sheet No. 18

Missouri-American Water Company
Name of Issuing Corporation

For

Missouri Service Area
Community, Town or City

**INSTALLATION REQUIREMENTS – DOMESTIC WATER SERVICE LINE
COMMERCIAL – SINGLE STORY**



* Indicates new rate or text

+ Indicates change

DATE OF ISSUE: October 30, 2009

DATE OF EFFECTIVE: November 29, 2009

ISSUED BY: Frank Kartmann, President
727 Craig Road, St. Louis, MO 63141

FORM NO. 13

P.S.C MO NO. 9

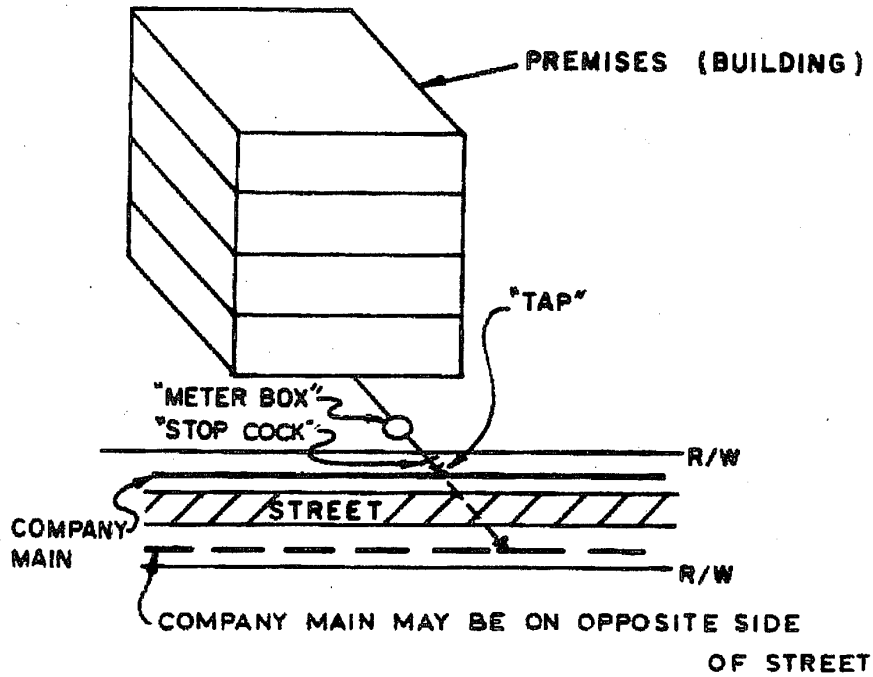
Original Appendix Sheet No. 19

Missouri-American Water Company
Name of Issuing Corporation

For

Missouri Service Area
Community, Town or City

**INSTALLATION REQUIREMENTS – DOMESTIC WATER SERVICE
COMMERCIAL – MULTI-STORY BUILDING**



* Indicates new rate or text

+ Indicates change

DATE OF ISSUE: October 30, 2009

DATE OF EFFECTIVE: November 29, 2009

ISSUED BY: Frank Kartmann, President
727 Craig Road, St. Louis, MO 63141

FORM NO. 13

P.S.C MO NO. 9

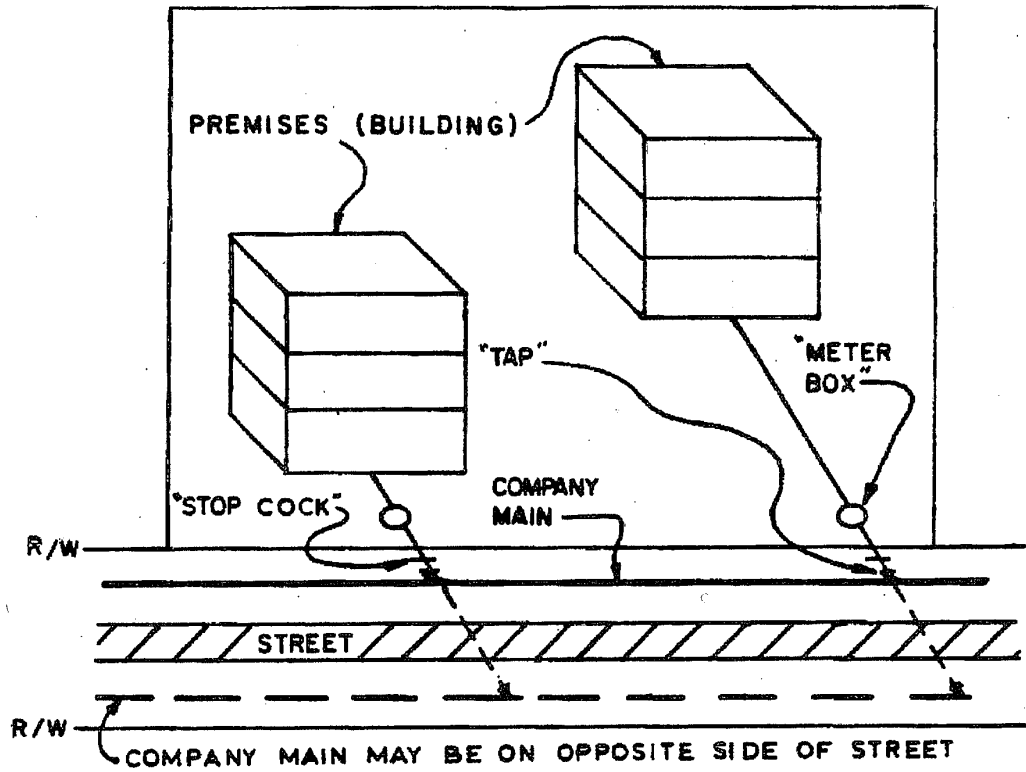
Original Appendix Sheet No. 20

Missouri-American Water Company
Name of Issuing Corporation

For

Missouri Service Area
Community, Town or City

**INSTALLATION REQUIREMENTS – DOMESTIC WATER SERVICE
COMMERCIAL – MULTI-STORY BUILDING**



* Indicates new rate or text
+ Indicates change

DATE OF ISSUE: October 30, 2009

DATE OF EFFECTIVE: November 29, 2009

ISSUED BY: Frank Kartmann, President
727 Craig Road, St. Louis, MO 63141

FORM NO. 13

P.S.C MO NO. 9

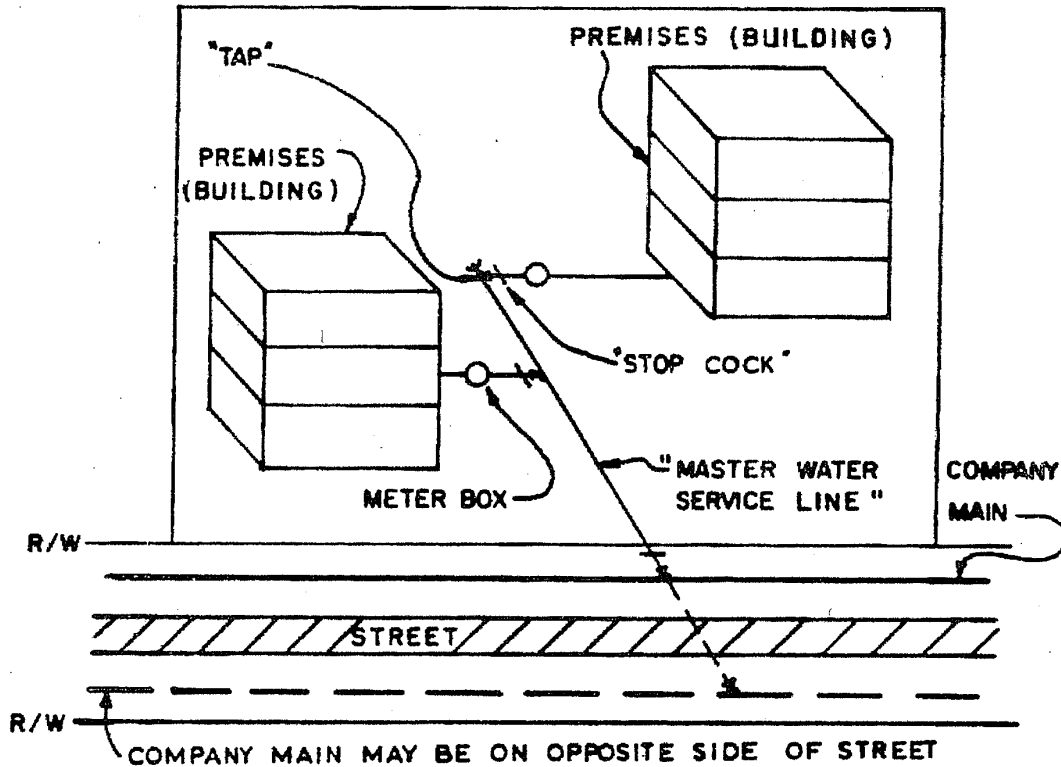
Original Appendix Sheet No. 21

Missouri-American Water Company
Name of Issuing Corporation

For

Missouri Service Area
Community, Town or City

**INSTALLATION REQUIREMENTS – DOMESTIC WATER SERVICE LINE
COMMERCIAL – MULTI-STORY BUILDING**



* Indicates new rate or text
+ Indicates change

DATE OF ISSUE: October 30, 2009

DATE OF EFFECTIVE: November 29, 2009

ISSUED BY: Frank Kartmann, President
727 Craig Road, St. Louis, MO 63141

FORM NO. 13

P.S.C MO NO. 9

Original Appendix Sheet No. 22

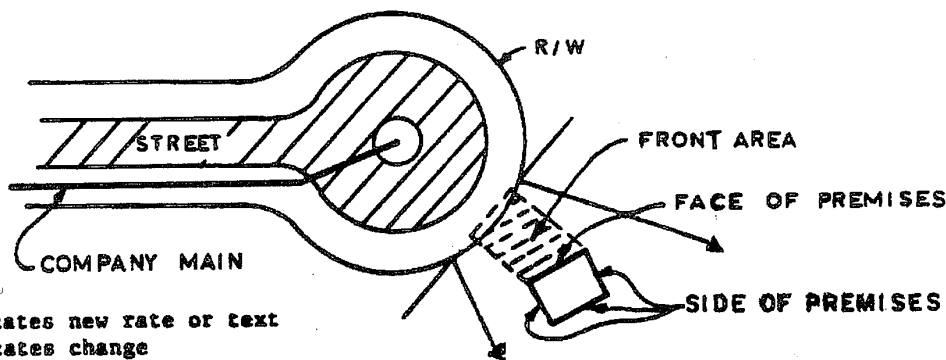
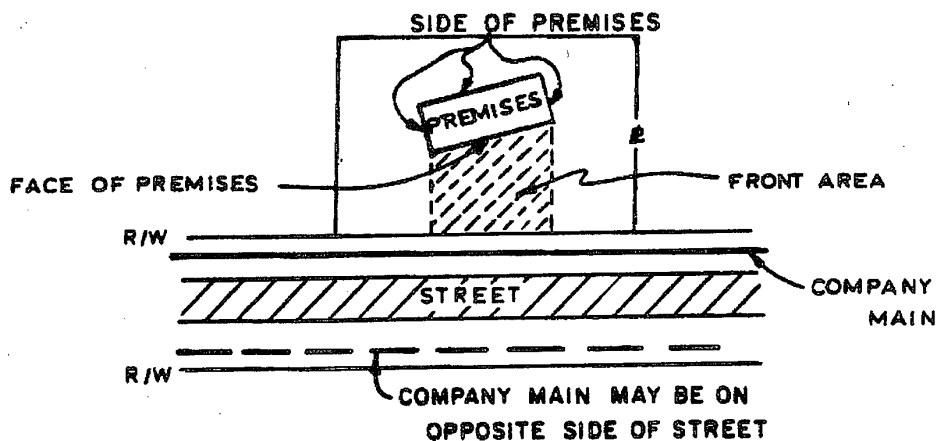
Missouri-American Water Company
Name of Issuing Corporation

For

Missouri Service Area
Community, Town or City

FACE OF A PREMISES

The "Face of a Premises" is the side of the premises nearest parallel to an existing Company main, or an extension thereof. In the case of a cul-de-sac (except as shown on Sheet 23), the "Face of a Premises" is the side of the premises nearest parallel to the straight line connecting the two front property corners of the property (nearest the street) upon which the premises is located.



*Indicates new rate or text
+Indicates change

* Indicates new rate or text
+ Indicates change

DATE OF ISSUE: October 30, 2009

DATE OF EFFECTIVE: November 29, 2009

ISSUED BY: Frank Kartmann, President
727 Craig Road, St. Louis, MO 63141

FORM NO. 13

P.S.C MO NO. 9

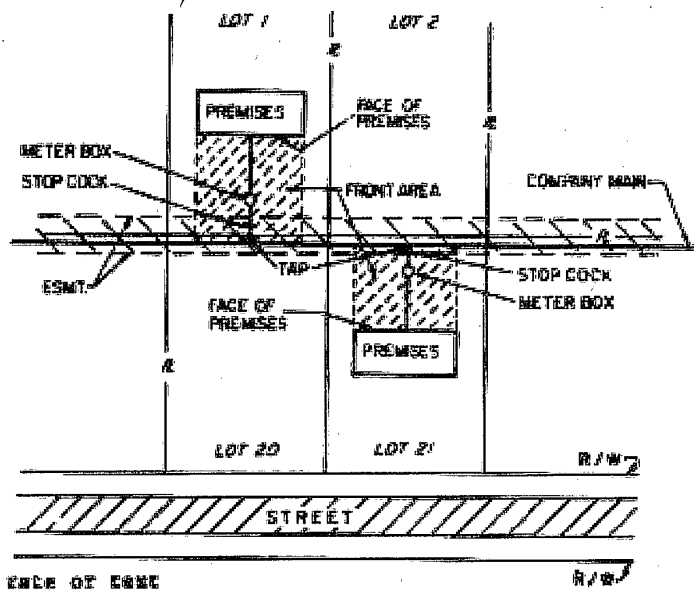
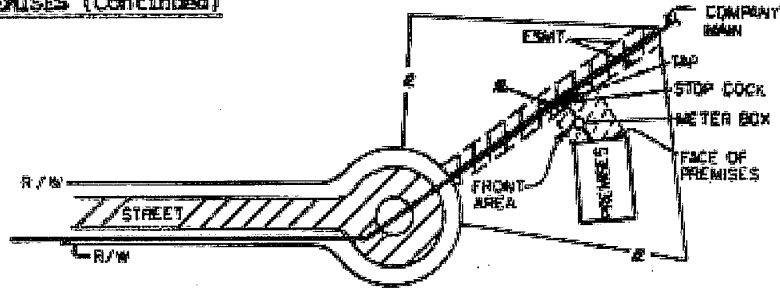
Original Appendix Sheet No. 23

Missouri-American Water Company
Name of Issuing Corporation

For

Missouri Service Area
Community, Town or City

FACE OF A PREMISES (Continued)



*Indicates new rate or text
+Indicates change

* Indicates new rate or text
+ Indicates change

DATE OF ISSUE: October 30, 2009

DATE OF EFFECTIVE: November 29, 2009

ISSUED BY: Frank Kartmann, President
727 Craig Road, St. Louis, MO 63141

FORM NO. 13

P.S.C MO NO. 9

Original Appendix Sheet No. 24

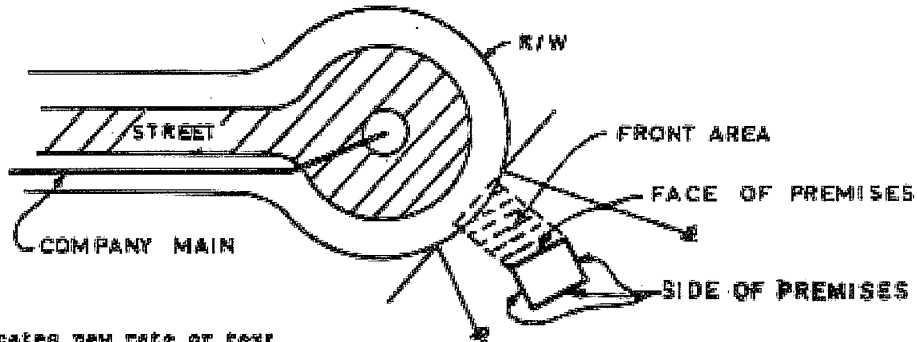
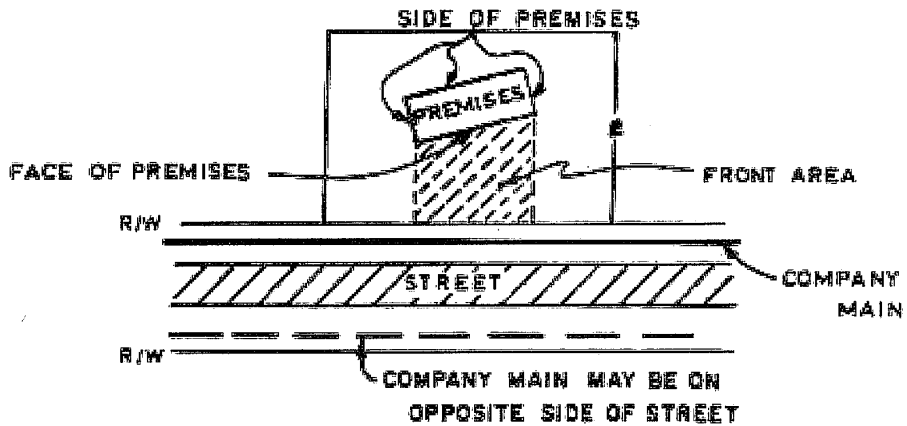
Missouri-American Water Company
Name of Issuing Corporation

For

Missouri Service Area
Community, Town or City

SIDE OF A PREMISES

The "Side of a Premises" is any side of a premises other than the "Face" of the same premises. (See sketch below.)



*Indicates new rate or text
+Indicates change

* Indicates new rate or text
+ Indicates change

DATE OF ISSUE: October 30, 2009

DATE OF EFFECTIVE: November 29, 2009

ISSUED BY: Frank Kartmann, President
727 Craig Road, St. Louis, MO 63141