

NOTES

1. Unless otherwise indicated, the ownership of all entities is 100%.
2. Alternate share, unit classes are depicted in red.

KEY

1. Liberty Owned Corporation or LLC
2. Non -Liberty Owned Corporation or LLC

Chart A

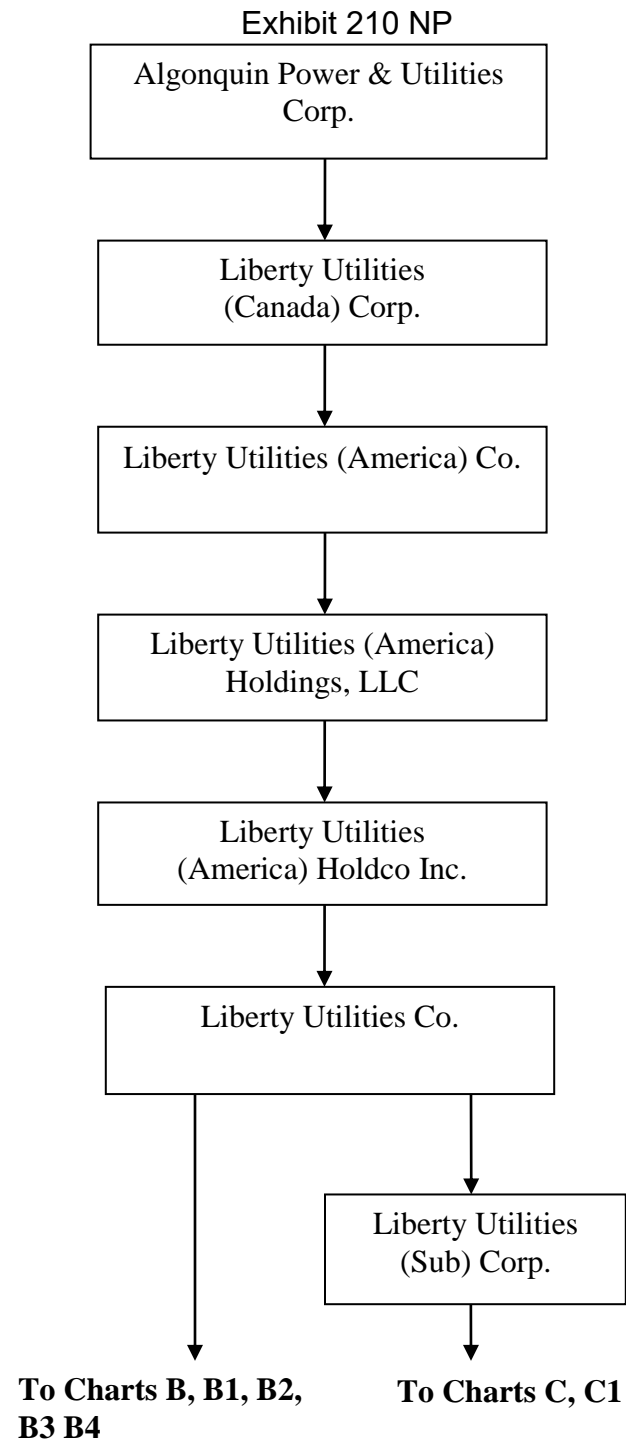


Chart B
(Continued on Charts B1, B2, B3, B4)

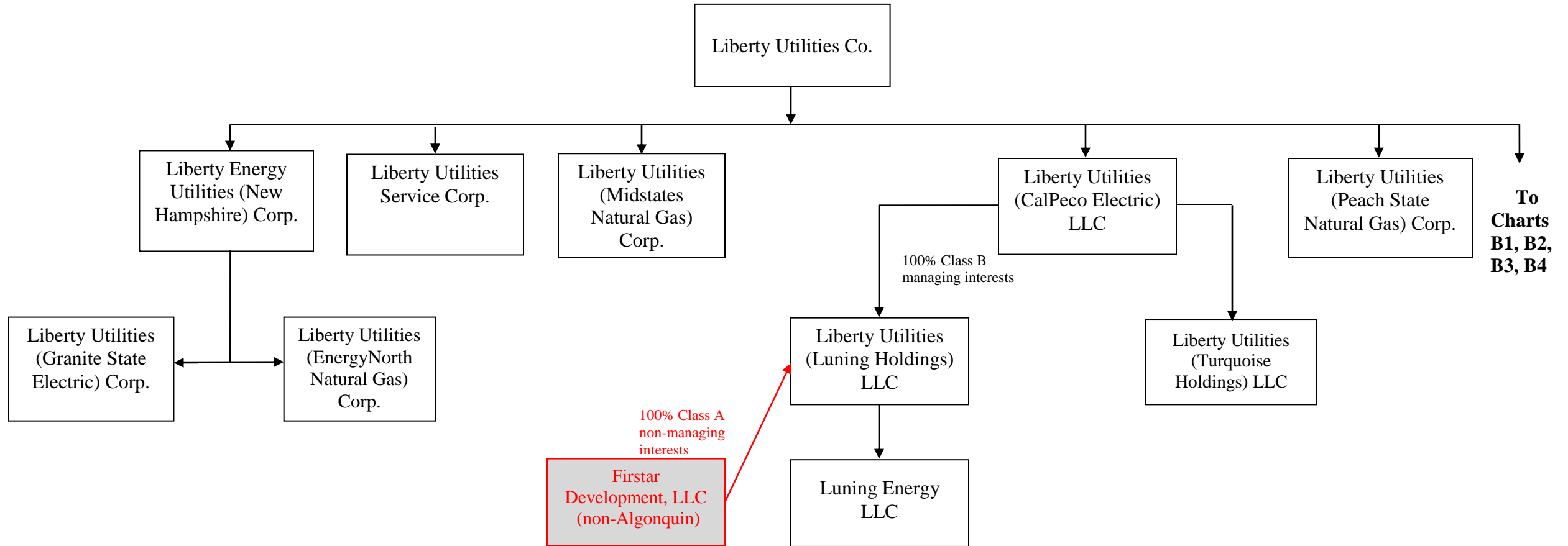
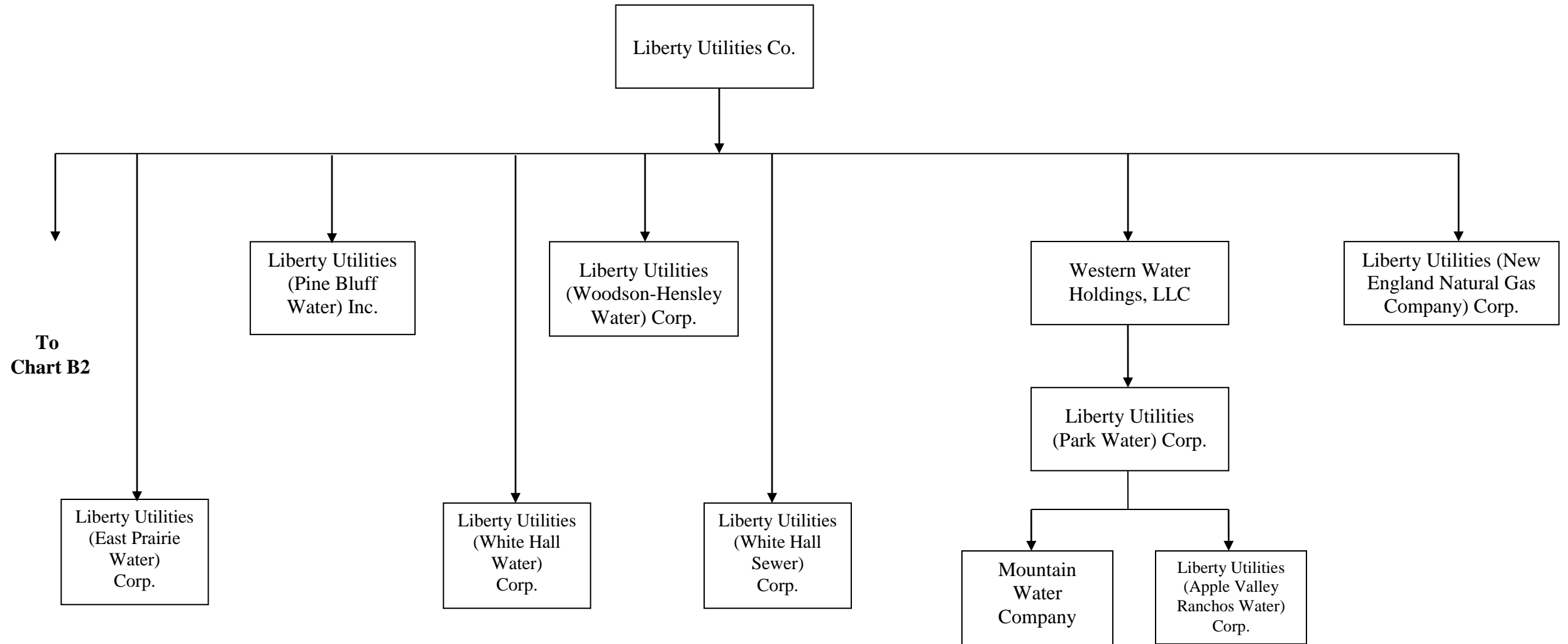


Chart B1



To
Chart B2

Chart B2

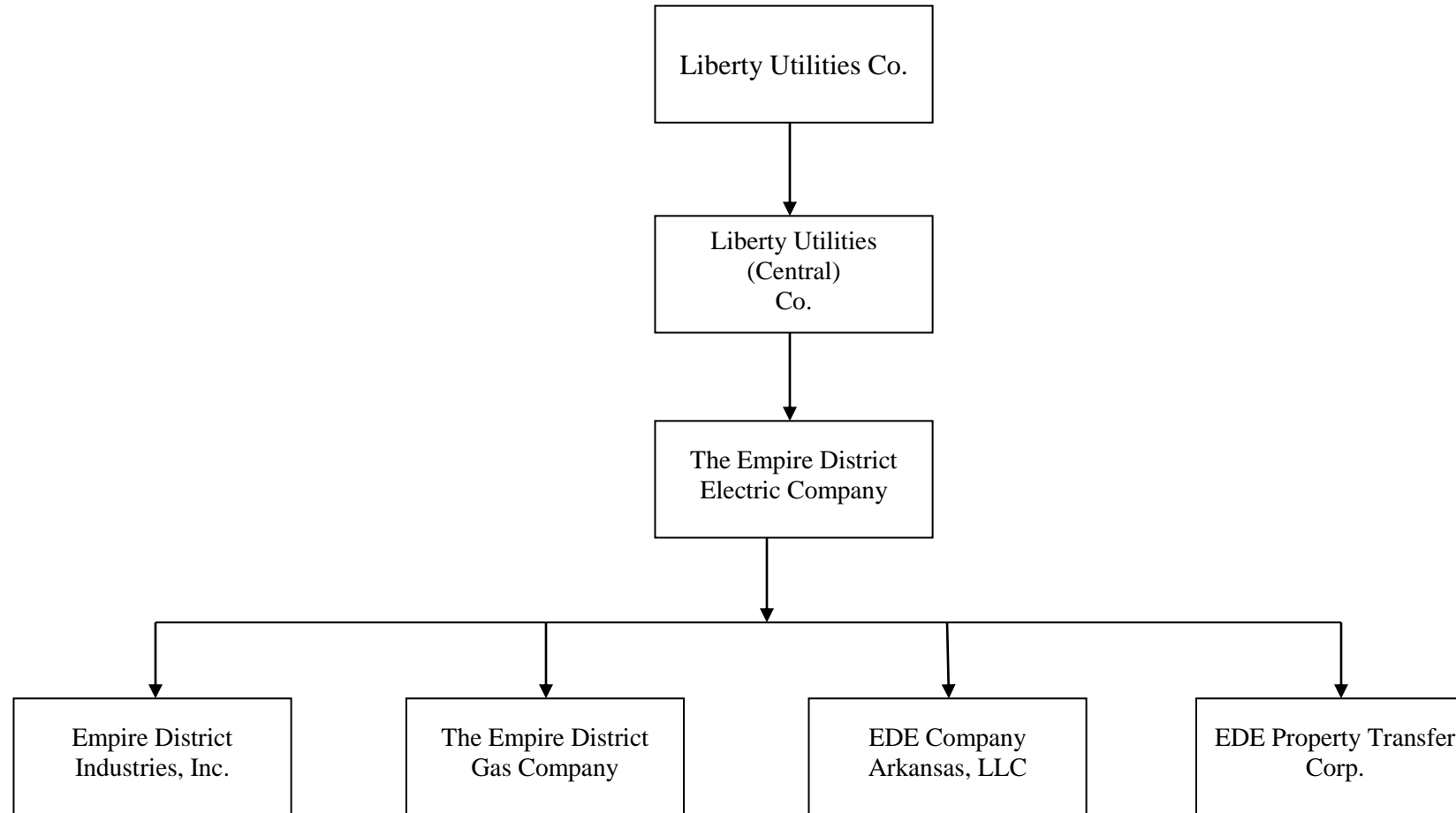


Chart B3

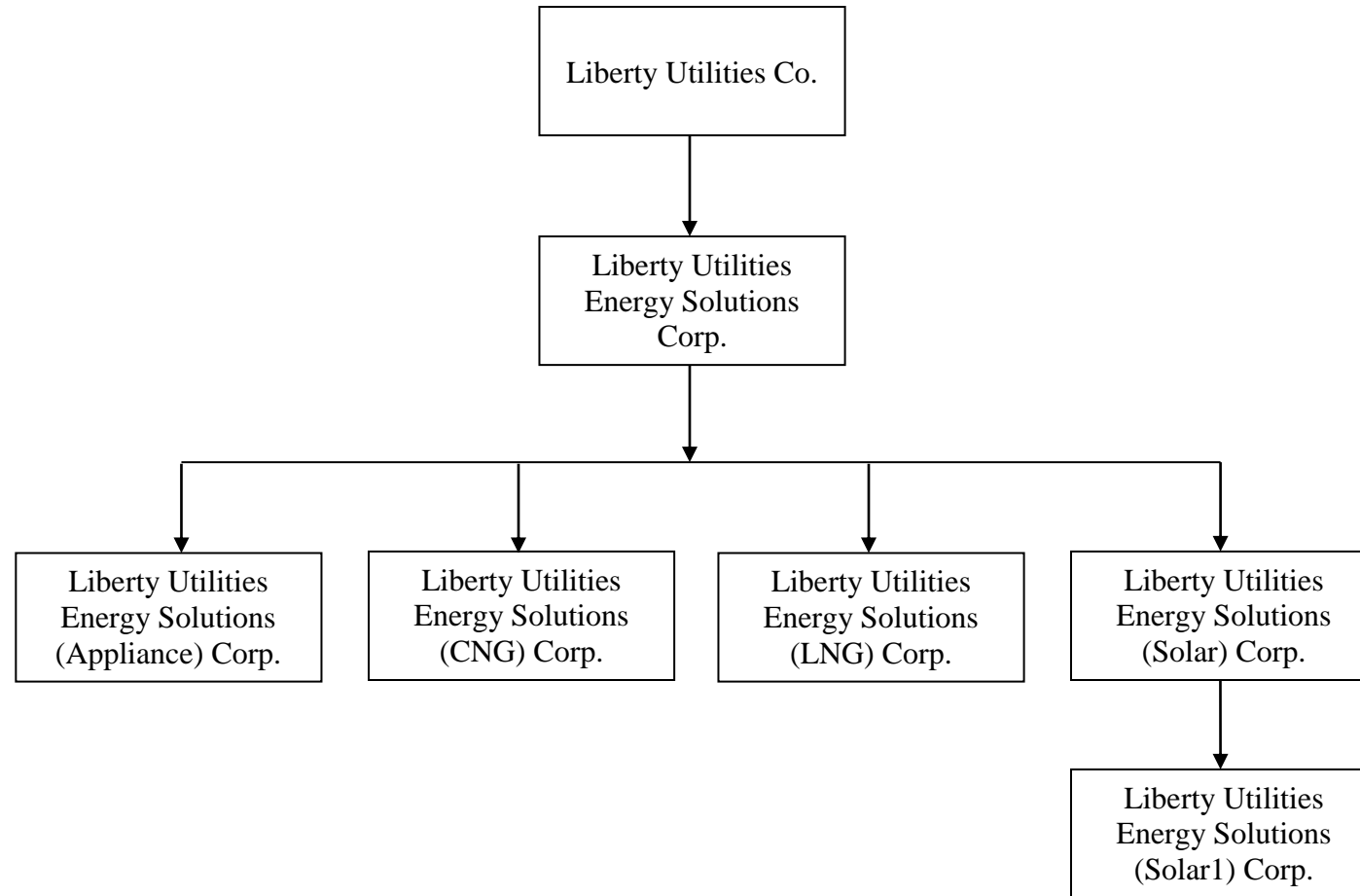


Chart B4

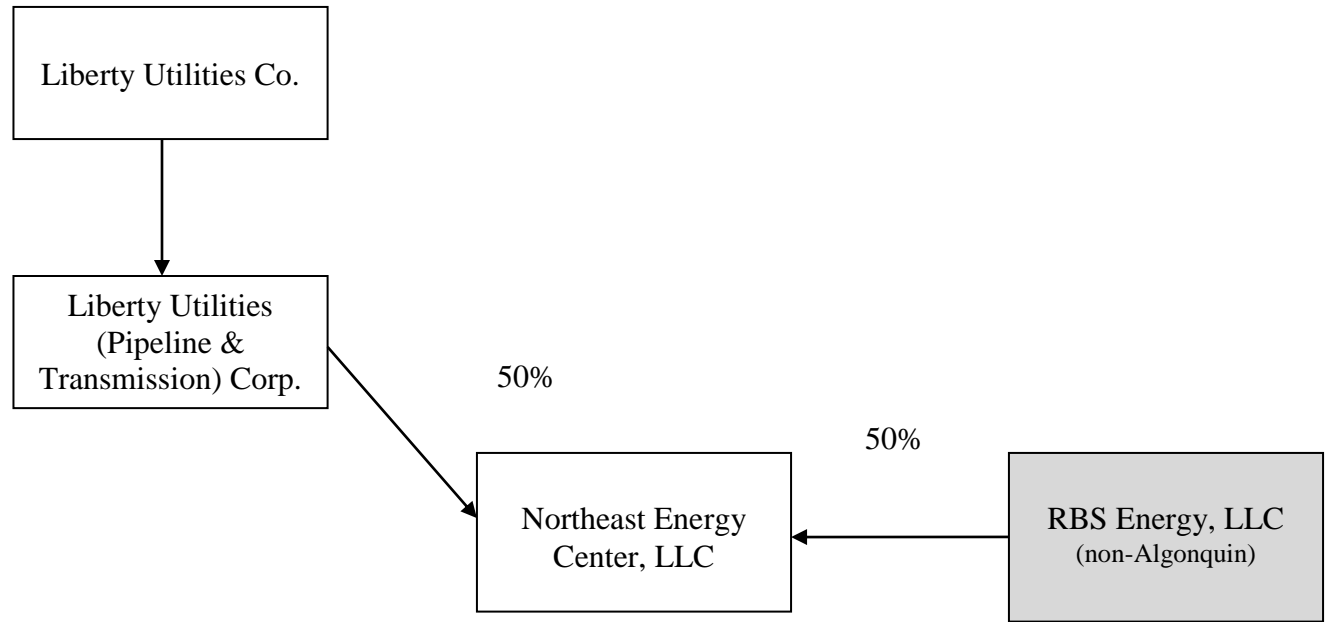
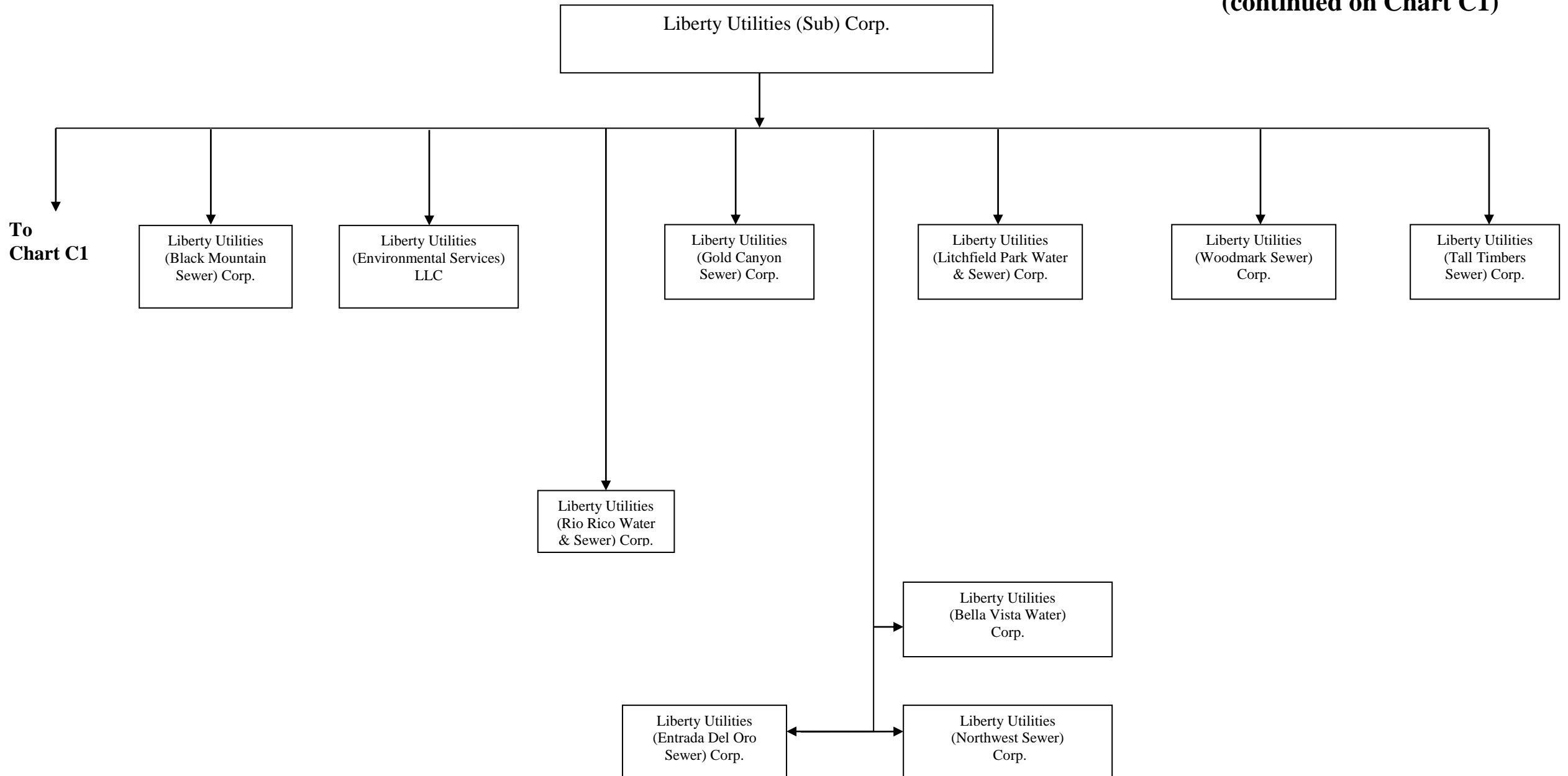


Chart C
(continued on Chart C1)



To
Chart C1

Chart C1

