

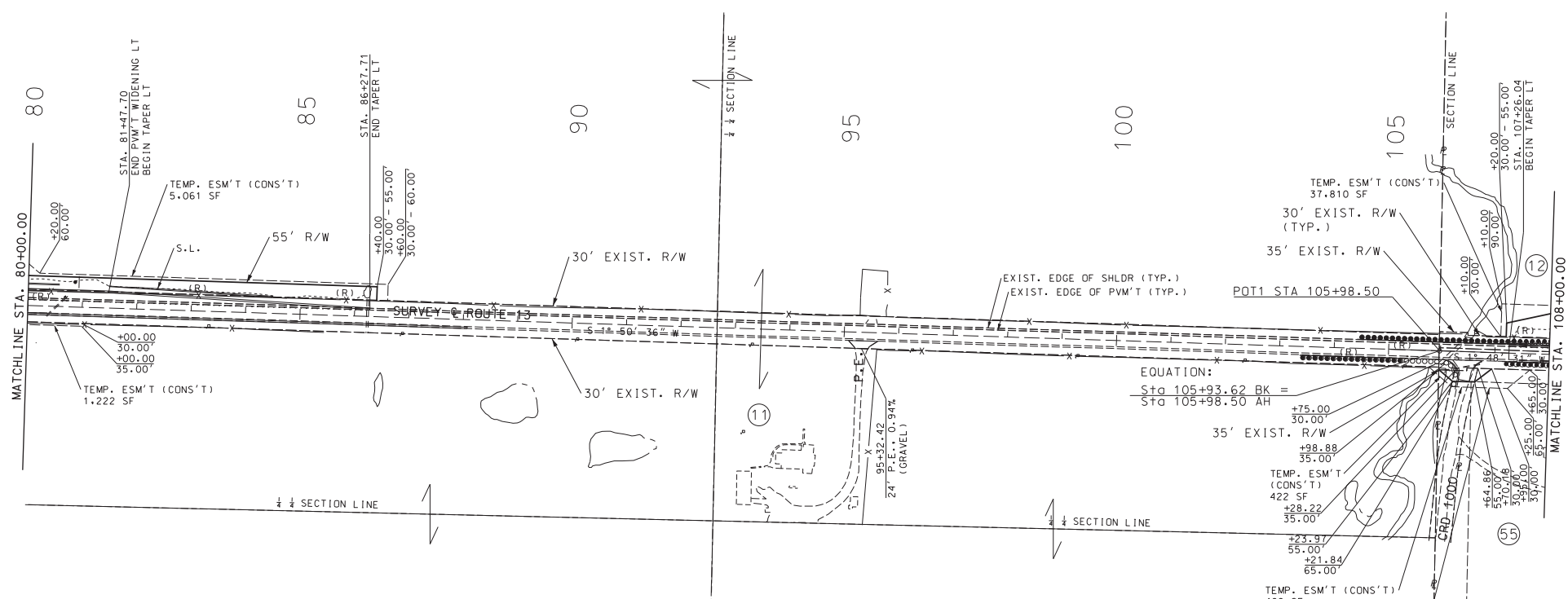
NE 1/4 SW 1/4  
SEC 36  
T48N R26W

SE 1/4 SW 1/4  
SEC 36  
T48N R26W

NW 1/4  
SEC 1  
T47N R26W

(11)  
DAVIS LEE &  
CAROL J DENNIS  
17,014 SF (0.39 AC) NEW R/W  
7,681 SF (0.18 AC) TEMP. ESM'T  
6,952,586 SF (159.61 AC) REMAINING  
03-70-36-00-000-0005.00

(12)  
RICKEY G &  
LYNDA C DYER  
86,429 SF (1.98 AC) NEW R/W  
40,626 SF (0.93 AC) TEMP. ESM'T  
2,903,034 SF (66.65 AC) REMAINING  
07-10-01-00-000-0003.00



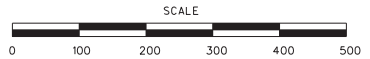
NW 1/4 SW 1/4  
SEC 36  
T48N R26W

SW 1/4 SW 1/4  
SEC 36  
T48N R26W

(108)  
JOHNSON COUNTY  
1,325 SF TEMP. ESM'T  
XXX.XX SF REMAINING

(55)  
BOURLAND  
PROPERTIES LLC  
2,749 SF (0.06 AC) TEMP. ESM'T  
338,897 SF (7.78 AC) REMAINING  
07-10-02-00-000-0001.00

RIGHT OF WAY SHEET  
SHEET 8 OF 20



DATE PREPARED	4/18/2023
ROUTE	13
STATE	MO
DISTRICT	KC
SHEET NO.	53
COUNTY	LAFAYETTE/JOHNSON
JOB NO.	J4P2333
CONTRACT ID.	
PROJECT NO.	
BRIDGE NO.	
DESCRIPTION	
DATE	
DATE	

MISSOURI HIGHWAYS AND TRANSPORTATION COMMISSION  
MoDOT  
105 WEST CAPITOL  
JEFFERSON CITY, MO 65102  
1-888-ASH-MODOT (1-888-275-6636)

IF A SEAL IS PRESENT ON THIS SHEET IT HAS BEEN ELECTRONICALLY SEALED AND DATED.



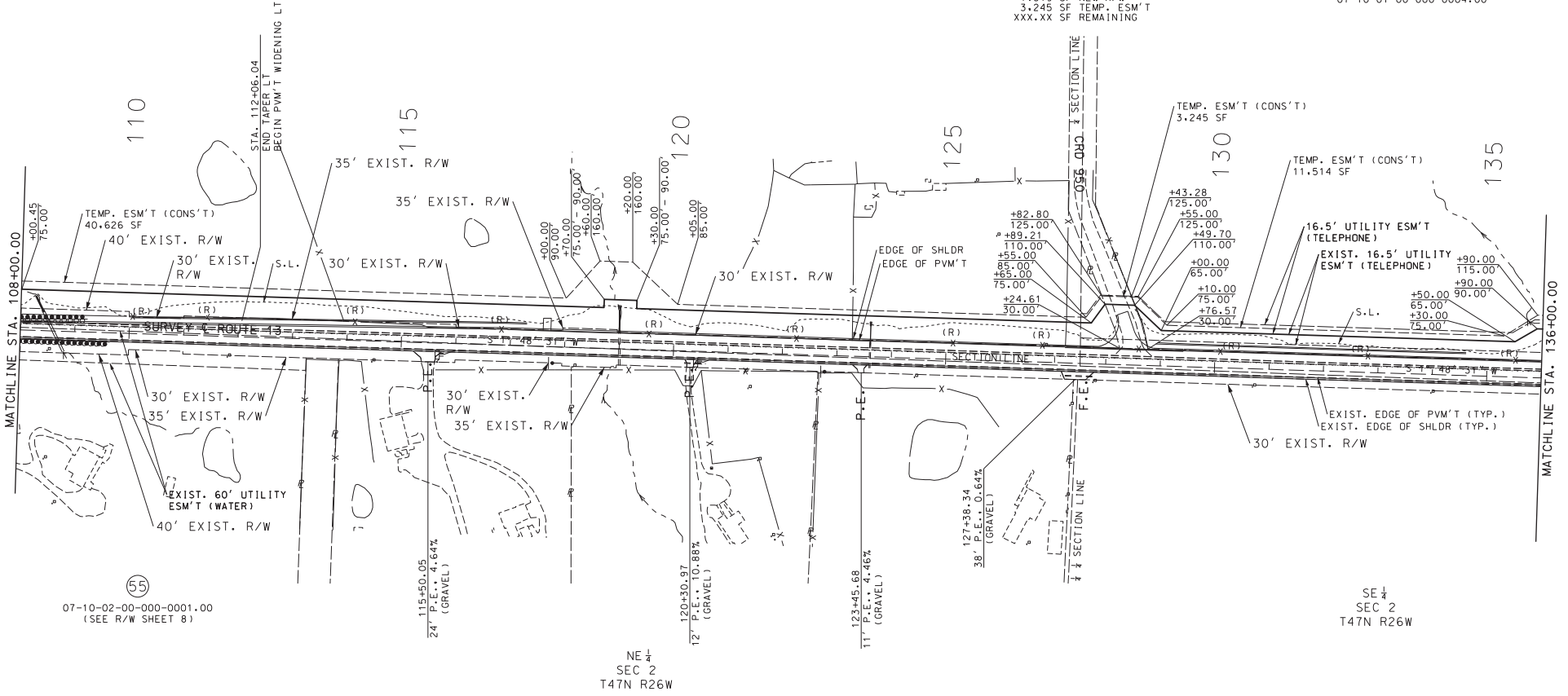
W 1/4 NW 1/4  
SEC 1  
T47N R26W

SW 1/4 SW 1/4  
SEC 1  
T47N R26W

(12)  
07-10-01-00-000-0003.00  
(SEE R/W SHEET 8)

(109)  
JOHNSON COUNTY  
1,819 SF NEW R/W  
3,245 SF TEMP. ESM'T  
XXX.XX SF REMAINING

(13)  
GEORGE E &  
LETHA SUE BOLAND  
101,837 SF (2.34 AC) NEW R/W  
35,050 SF (0.81 AC) TEMP. ESM'T  
6,867,763 SF (157.66 AC) REMAINING  
07-10-01-00-000-0004.00



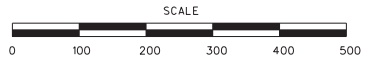
MATCHLINE STA. 108+00.00

MATCHLINE STA. 136+00.00

(55)  
07-10-02-00-000-0001.00  
(SEE R/W SHEET 8)

NE 1/4  
SEC 2  
T47N R26W

SE 1/4  
SEC 2  
T47N R26W



RIGHT OF WAY SHEET  
SHEET 9 OF 20

DATE PREPARED	4/18/2023
ROUTE	13
STATE	MO
DISTRICT	KC
SHEET NO.	54
COUNTY	LAFAYETTE/JOHNSON
JOB NO.	J4P2333
CONTRACT ID.	
PROJECT NO.	
BRIDGE NO.	
DESCRIPTION	
DATE	

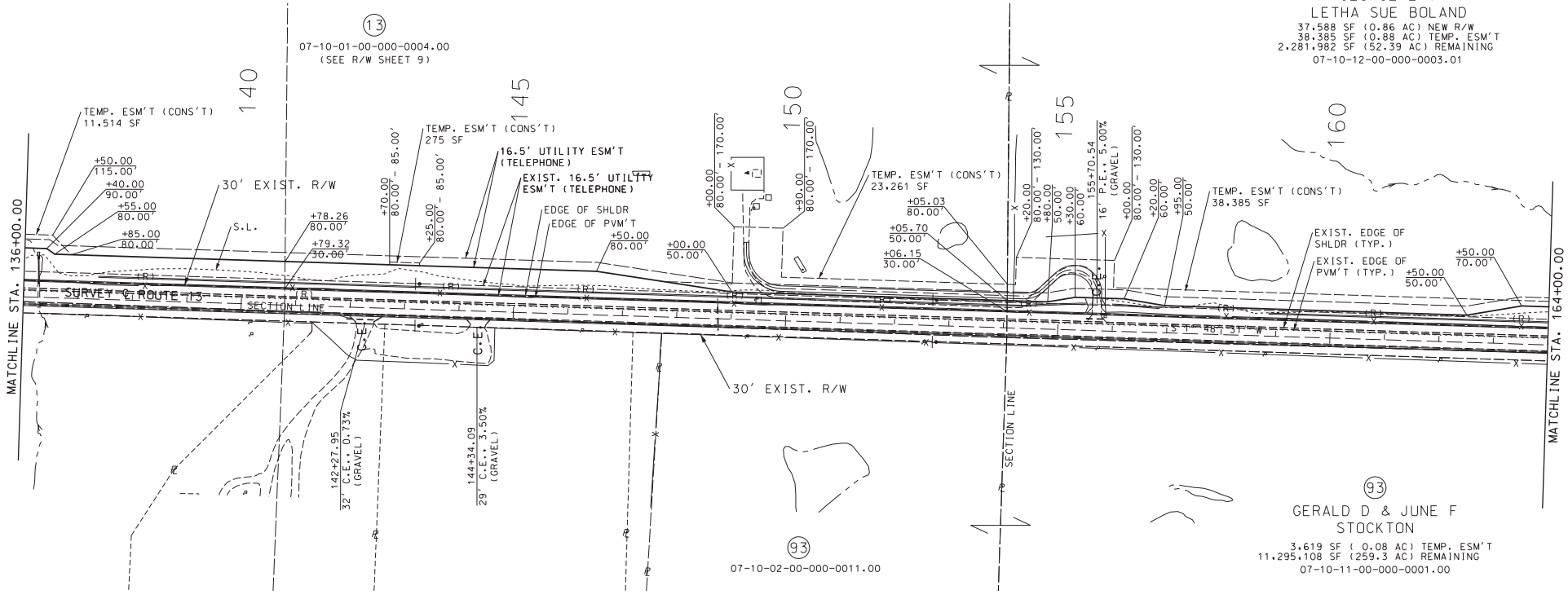
MISSOURI HIGHWAYS AND TRANSPORTATION COMMISSION  
  
 105 WEST CAPITOL  
 JEFFERSON CITY, MO 65102  
 1-888-ASK-MODOT (1-888-275-6636)

IF A SEAL IS PRESENT ON THIS SHEET IT HAS BEEN ELECTRONICALLY SEALED AND DATED.



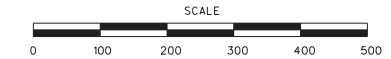
NW 1/4 SW 1/4  
SEC 1  
T47N R26W

NW 1/4 NW 1/4  
SEC 12  
T47N R26W



MATCHLINE STA. 136+00.00

MATCHLINE STA. 164+00.00



SE 1/4  
SEC 2  
T47N R26W

NE 1/4 NE 1/4  
SEC 11  
T47N R26W

DATE PREPARED 4/18/2023	
ROUTE 13	STATE MO
DISTRICT KC	SHEET NO. 55
COUNTY LAFAYETTE/JOHNSON	
JOB NO. J4P2333	
CONTRACT ID.	
PROJECT NO.	
BRIDGE NO.	

NO.	DESCRIPTION	DATE

MISSOURI HIGHWAYS AND TRANSPORTATION COMMISSION

105 WEST CAPITOL  
JEFFERSON CITY, MO 65102  
1-888-ASH-MODOT (1-888-275-6636)

RIGHT OF WAY SHEET  
SHEET 10 OF 20

IF A SEAL IS PRESENT ON THIS SHEET IT HAS BEEN ELECTRONICALLY SEALED AND DATED.



SW 1/4 NW 1/4  
SEC 12  
T47N R26W

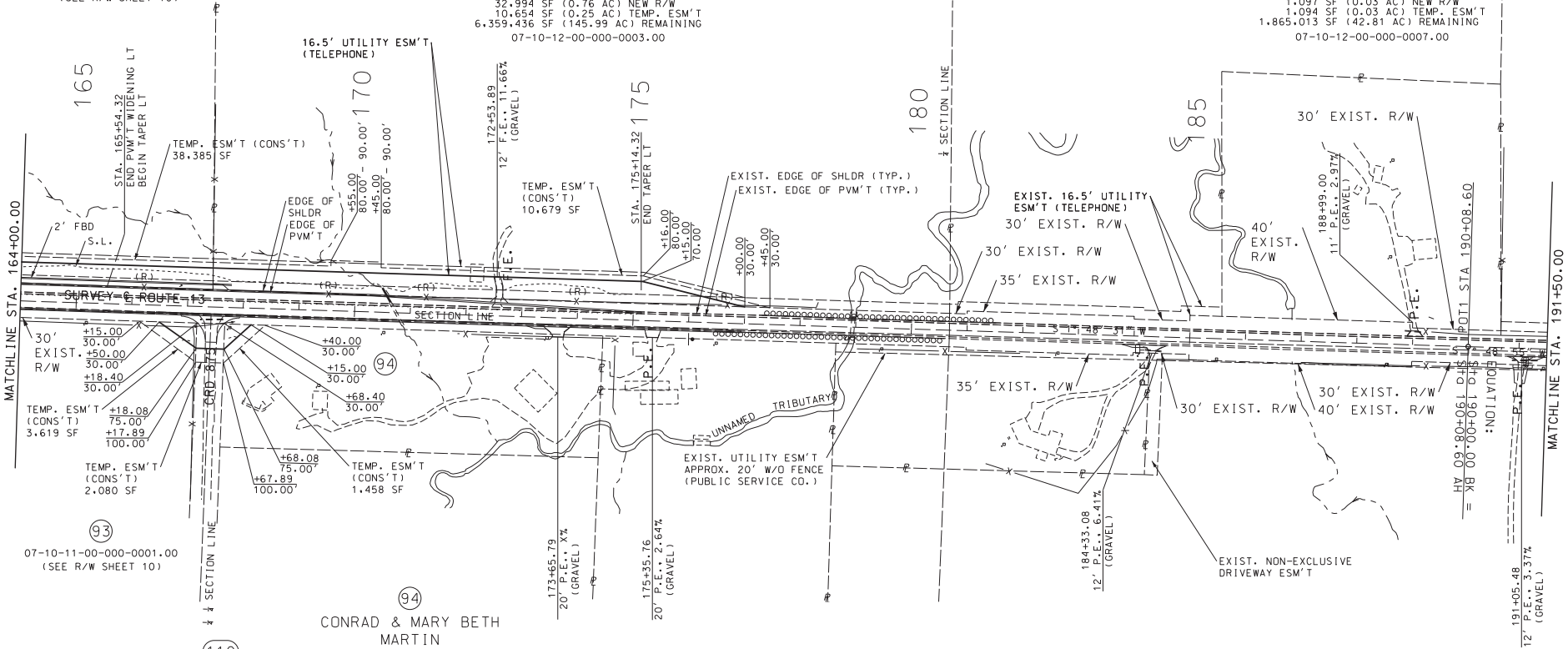
W 1/2 SW 1/4  
SEC 12  
T47N R26W

NW 1/4 NW 1/4  
SEC 12  
T47N R26W

13  
07-10-12-00-000-0003.01  
(SEE R/W SHEET 10)

14  
GERALD D &  
JUNE F STOCKTON  
32,994 SF (0.76 AC) NEW R/W  
10,654 SF (0.25 AC) TEMP. ESM'T  
6,359,436 SF (145.99 AC) REMAINING  
07-10-12-00-000-0003.00

15  
STEPHEN B &  
BARBARA DAY  
1,097 SF (0.03 AC) NEW R/W  
1,094 SF (0.03 AC) TEMP. ESM'T  
1,865,013 SF (42.81 AC) REMAINING  
07-10-12-00-000-0007.00



93  
07-10-11-00-000-0001.00  
(SEE R/W SHEET 10)

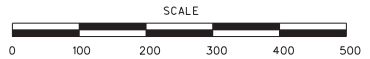
94  
CONRAD & MARY BETH  
MARTIN  
2,506 SF (0.06 AC) TEMP. ESM'T  
149,462 SF (3.43 AC) REMAINING  
UNKNOWN PARCEL ID

110  
JOHNSON COUNTY  
3,493 SF TEMP. ESM'T  
XXX.XX SF REMAINING

SE 1/4 NE 1/4  
SEC 11  
T47N R26W

E 1/2 SE 1/4  
SEC 11  
T47N R26W

RIGHT OF WAY SHEET  
SHEET 11 OF 20



DATE PREPARED	
ROUTE	STATE
13	MO
DISTRICT	SHEET NO.
KC	56
COUNTY	
LAFAYETTE/JOHNSON	
JOB NO.	
J4P2333	
CONTRACT ID.	
PROJECT NO.	
BRIDGE NO.	
DATE	DESCRIPTION

MISSOURI HIGHWAYS AND TRANSPORTATION  
COMMISSION

105 WEST CAPITOL  
JEFFERSON CITY, MO 65102  
1-888-ASK-MODOT (1-888-275-6636)

IF A SEAL IS PRESENT ON THIS SHEET, IT HAS BEEN ELECTRONICALLY SEALED AND DATED.

W 1/2 SW 1/4  
SEC 12  
T47N R26W

16 #  
DAY FAMILY TRUST  
14,217 SF (0.33 AC) NEW R/W  
10,724 SF (0.26 AC) TEMP. ESM'T  
1,874,109 SF (43.02 AC) REMAINING  
07-10-11-00-000-0010.00

17 #  
DAY FAMILY TRUST  
14,996 SF (0.34 AC) NEW R/W  
6,296 SF (0.15 AC) TEMP. ESM'T  
274,678 SF (6.31 AC) REMAINING  
07-10-12-00-000-0011.01

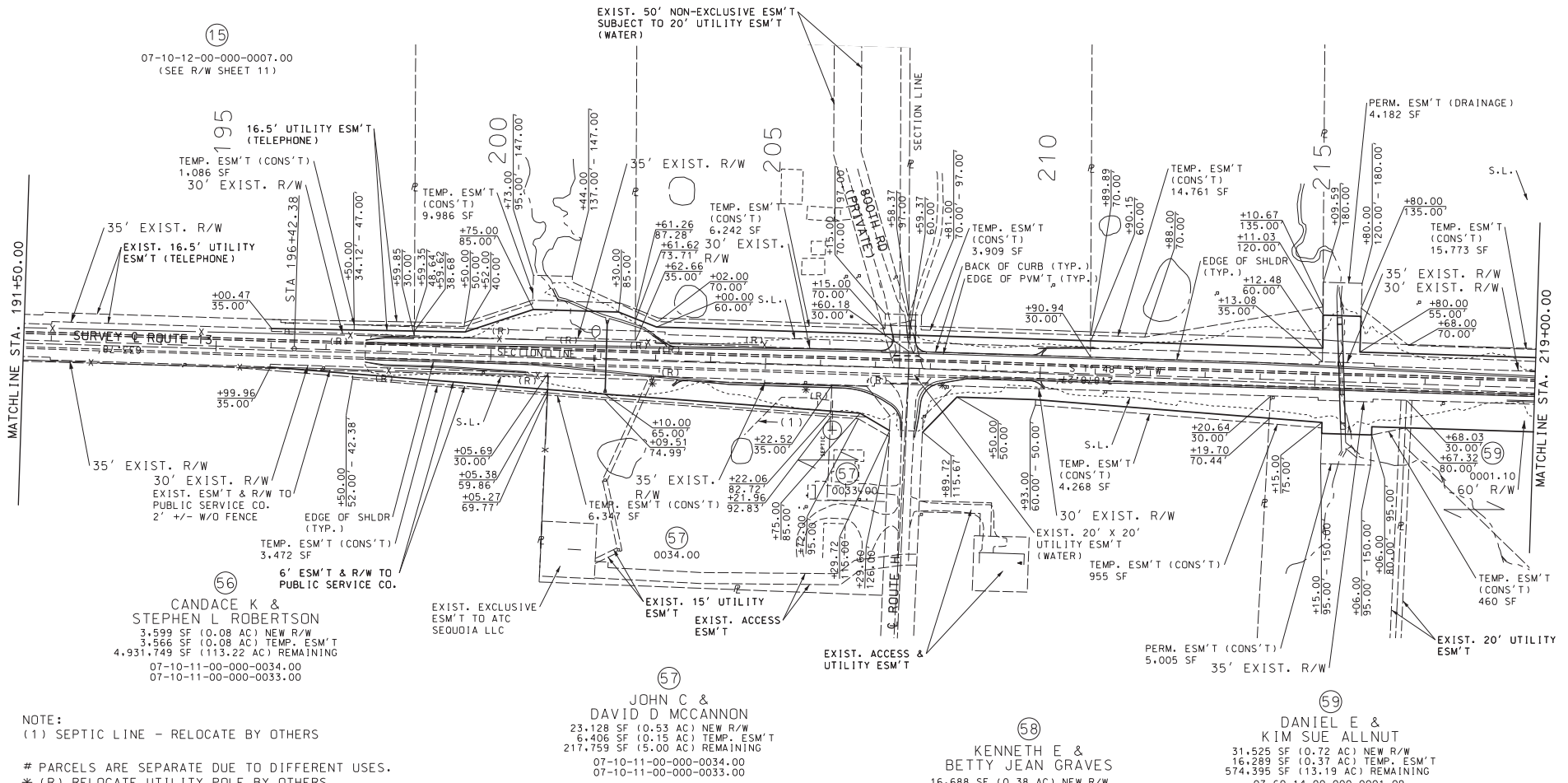
18 #  
PATRICK JAMES &  
TERESA MICHELLE BRITTON  
9,923 SF (0.23 AC) NEW R/W  
3,909 SF (0.09 AC) TEMP. ESM'T  
425,677 SF (9.77 AC) REMAINING  
07-60-13-00-000-0019.01

19 #  
JANET S BRITTON  
13,698 SF (0.31 AC) NEW R/W  
20,023 SF (0.46 AC) TEMP. ESM'T  
2,428,276 SF (55.75 AC) REMAINING  
07-60-13-00-000-0019.03

NW 1/4 NW 1/4  
SEC 13  
T47N R26W

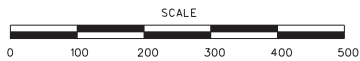
20 #  
JANET S BRITTON  
20,631 SF (0.47 AC) NEW R/W  
21,142 SF (0.49 AC) TEMP. ESM'T  
429,344 SF (9.86 AC) REMAINING  
07-60-13-00-000-0019.00

15 #  
07-10-12-00-000-0007.00  
(SEE R/W SHEET 11)



NOTE:  
(1) SEPTIC LINE - RELOCATE BY OTHERS

# PARCELS ARE SEPARATE DUE TO DIFFERENT USES.  
\* (R) RELOCATE UTILITY POLE BY OTHERS



E 1/2 SE 1/4  
SEC 11  
T47N R26W

58 #  
KENNETH E &  
BETTY JEAN GRAVES  
16,688 SF (0.38 AC) NEW R/W  
5,997 SF (0.14 AC) TEMP. ESM'T  
418,912 SF (9.62 AC) REMAINING  
07-60-14-00-000-0031.01

59 #  
DANIEL E &  
KIM SUE ALLNUT  
31,525 SF (0.72 AC) NEW R/W  
16,289 SF (0.37 AC) TEMP. ESM'T  
574,395 SF (13.19 AC) REMAINING  
07-60-14-00-000-0001.09  
07-60-14-00-000-0001.10

E 1/2 NE 1/4  
SEC 14  
T47N R26W

RIGHT OF WAY SHEET  
SHEET 12 OF 20

DATE PREPARED	4/18/2023
ROUTE	13
STATE	MO
DISTRICT	KC
SHEET NO.	57
COUNTY	LAFAYETTE/JOHNSON
JOB NO.	J4P2333
CONTRACT ID.	
PROJECT NO.	
BRIDGE NO.	

DESCRIPTION	DATE

MISSOURI HIGHWAYS AND TRANSPORTATION COMMISSION

105 WEST CAPITOL  
JEFFERSON CITY, MO 65102  
1-888-ASH-MODOT (1-888-275-6636)

IF A SEAL IS PRESENT ON THIS SHEET, IT HAS BEEN ELECTRONICALLY SEALED AND DATED.

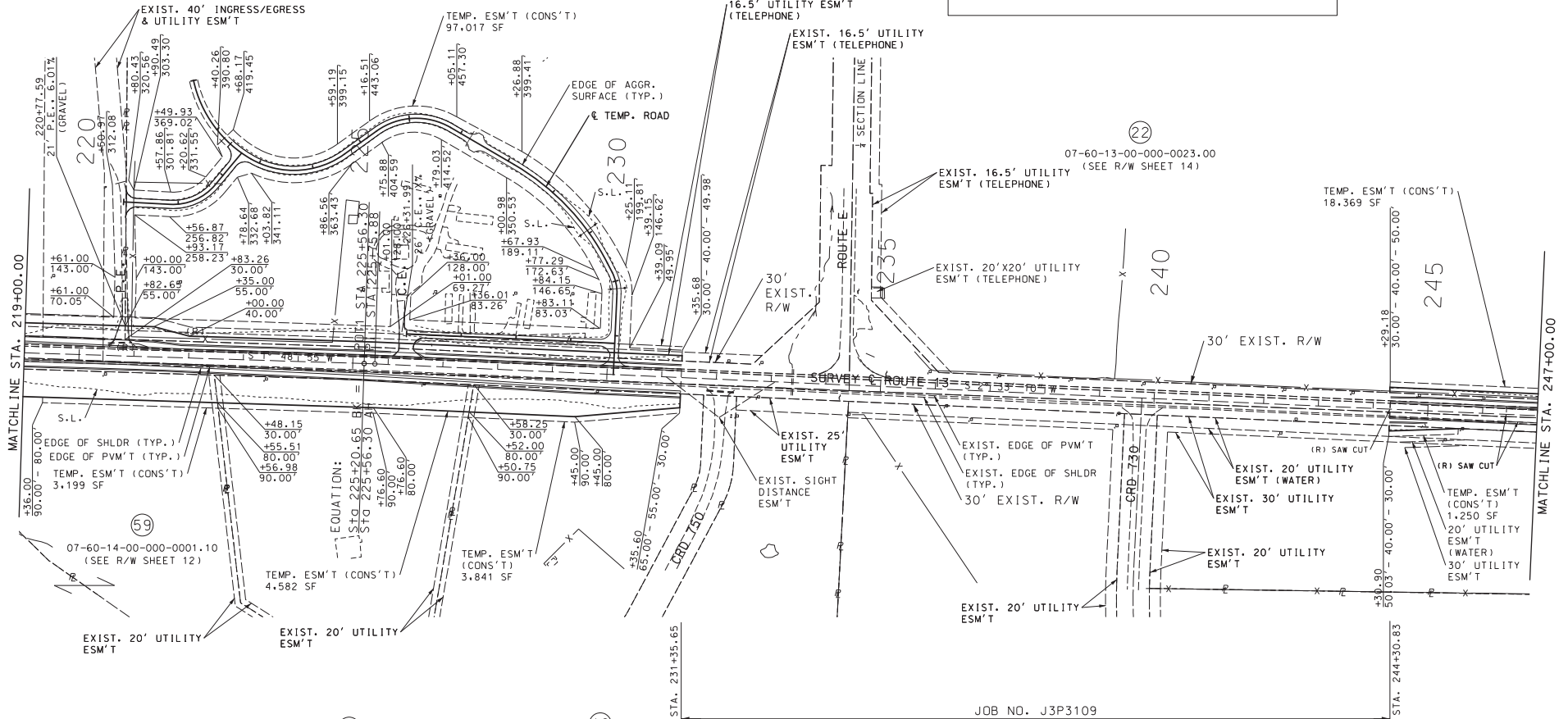
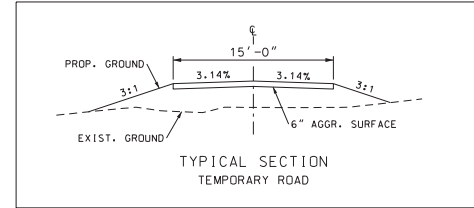
NOTE:  
SB AND NB TURN LANE IMPROVEMENTS AT ROUTE E  
UNAVAILABLE AT THIS TIME (JOB NO. J3P3109).

W 1/2 NW 1/4  
SEC 13  
T47N R26W

W 1/2 SW 1/4  
SEC 13  
T47N R26W

②0 #  
07-60-13-00-000-0019.00  
(SEE R/W SHEET 12)

②1  
JOHN A &  
PATTY EPPS  
20,524 SF (0.47 AC) NEW R/W  
84,046 SF (1.93 AC) TEMP. ESM'T  
1,721,876 SF (39.53 AC) REMAINING (AFTER J4P2333 ONLY)  
X.XXX.XXX SF (XX.XX AC) REMAINING (AFTER J4P2333 & J3P3109 ACQUISITIONS)  
07-60-13-00-000-0020.00



①1  
MARK ANDREW &  
BETHANN CAMPBELL HILL  
18,735 SF (0.43 AC) NEW R/W  
4,612 SF (0.11 AC) TEMP. ESM'T  
170,650 SF (3.92 AC) REMAINING  
07-60-14-00-000-0011.20

①2  
AMY GANINE  
CLEMENTS  
12,327 SF (0.28 AC) NEW R/W  
3,820 SF (0.09 AC) TEMP. ESM'T  
148,845 SF (3.42 AC) REMAINING (AFTER J4P2333 ONLY)  
XXX.XXX SF (X.XX AC) REMAINING (AFTER J4P2333 & J3P3109 ACQUISITIONS)  
07-60-14-00-000-0001.13

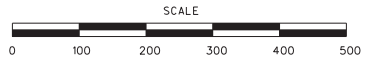
JOB NO. J3P3109  
(SEE JOB NO. J3P3109 FOR R/W DETAILS)

DATE PREPARED		4/18/2023	
ROUTE	13	STATE	MO
DISTRICT	KC	SHEET NO.	59
COUNTY			
LAFAYETTE/JOHNSON			
JOB NO.			
J4P2333			
CONTRACT ID.			
PROJECT NO.			
BRIDGE NO.			

DESCRIPTION	DATE

MISSOURI HIGHWAYS AND TRANSPORTATION  
COMMISSION  
M&T  
105 WEST CAPITOL  
JEFFERSON CITY, MO 65102  
1-888-ASK-MODOT (1-888-275-6636)

IF A SEAL IS PRESENT ON THIS SHEET IT HAS BEEN ELECTRONICALLY SEALED AND DATED.



(R) REMOVE EXIST. SHLDR & REBUILD W/ FULL DEPTH PVM'T

E 1/2 SE 1/4  
SEC 14  
T47N R26W  
RIGHT OF WAY SHEET  
SHEET 14 OF 20

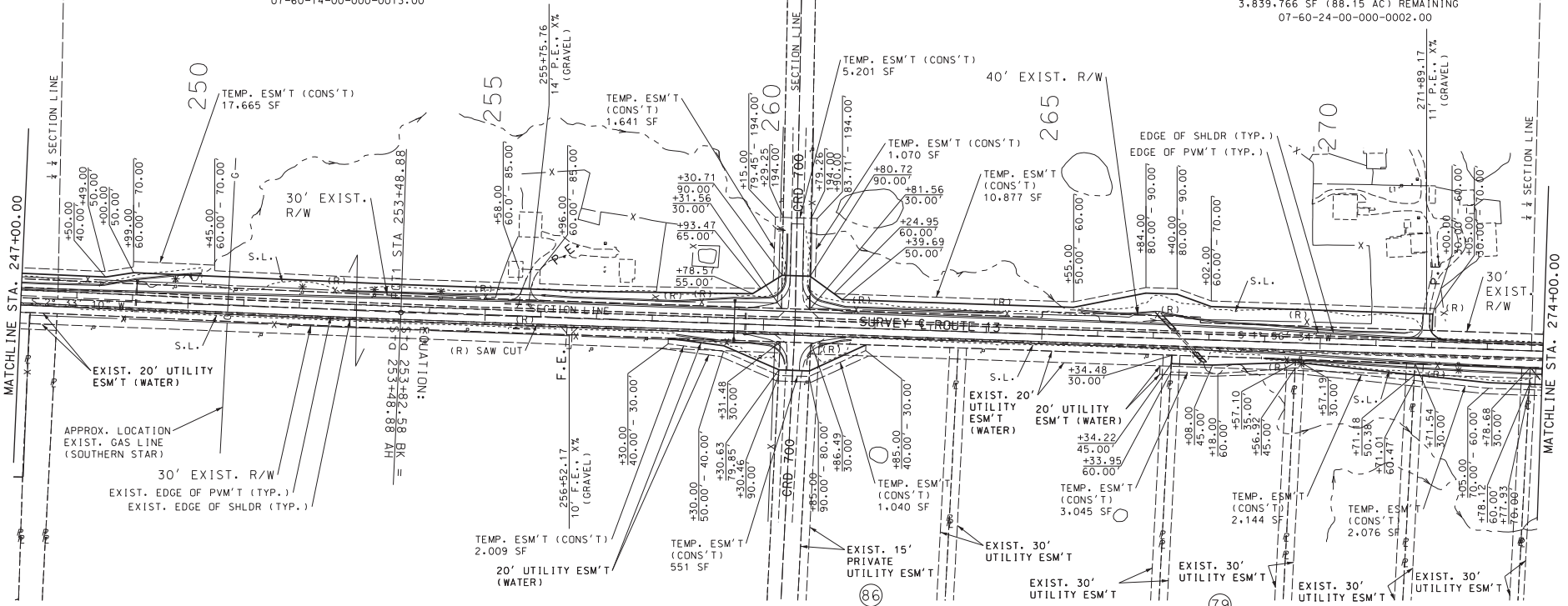
W 1/4 SW 1/4  
SEC 13  
T47N R26W

W 1/4 NW 1/4  
SEC 24  
T47N R26W

22  
AARON RAY &  
COLETTE EILEEN COLLETT  
25,348 SF ( 0.58 AC) NEW R/W LT  
12,872 SF ( 0.30 AC) TEMP. ESM'T LT  
6,944,252 SF (159.42 AC) REMAINING LT  
1,600 SF ( 0.04 AC) NEW R/W RT  
803 SF ( 0.02 AC) TEMP. ESM'T RT  
1,805,633 SF ( 41.45 AC) REMAINING RT  
07-60-13-00-000-0023.00  
07-60-14-00-000-0013.00

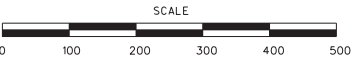
112  
JOHNSON COUNTY  
3,000 SF ( 0.07 AC) NEW R/W  
500 SF ( 0.01 AC) TEMP. ESM'T  
XXX.XX SF (XX.XX AC) REMAINING

23  
CAROLYN A MCCONNAUGHAY  
37,074 SF ( 0.85 AC) NEW R/W  
11,264 SF ( 0.26 AC) TEMP. ESM'T  
3,839,766 SF (88.15 AC) REMAINING  
07-60-24-00-000-0002.00



NOTE:  
(1) TEMP. EASEMENT (CONSTRUCTION)  
E 1/2 SE 1/4  
SEC 14  
T47N R26W

\* (R) RELOCATE UTILITY POLE BY OTHERS



(R) REMOVE EXIST. SHLDR & REBUILD W/ FULL DEPTH PVM'T

86  
JASON D &  
SARAH KAY COLLINS  
2,405 SF (0.06 AC) NEW R/W  
776 SF (0.02 AC) TEMP. ESM'T  
182,725 SF (4.19 AC) REMAINING  
07-60-23-00-000-0001.02

78  
JASON TIMOTHY  
OSTERMAN  
1,040 SF (0.02 AC) NEW R/W  
260,320 SF (5.98 AC) REMAINING  
07-60-23-00-000-0001.03

79  
COLEMAN &  
HALLIE BRYAN  
5,496 SF (0.13 AC) NEW R/W  
154,369 SF (3.54 AC) REMAINING  
07-60-23-00-000-0001.04

81  
MELVIN F &  
CAROLYN K HOFFMAN  
6,214 SF (0.14 AC) NEW R/W  
2,071 SF (0.05 AC) TEMP. ESM'T  
153,651 SF (3.53 AC) REMAINING  
07-60-23-00-000-0001.06

80  
FERNANDO &  
LAURA MARTINS  
6,431 SF (0.15 AC) NEW R/W  
2,144 SF (0.05 AC) TEMP. ESM'T  
153,434 SF (3.52 AC) REMAINING  
07-60-23-00-000-0001.05

E 1/2 NW 1/4  
SEC 23  
T47N R26W

RIGHT OF WAY SHEET  
SHEET 15 OF 20

Table with columns: DATE PREPARED (4/18/2023), ROUTE (13), STATE (MO), DISTRICT (KC), SHEET NO. (60), COUNTY (LAFAYETTE/JOHNSON), JOB NO. (J4P2333), CONTRACT ID., PROJECT NO., BRIDGE NO., DESCRIPTION, DATE, MISSOURI HIGHWAYS AND TRANSPORTATION COMMISSION, and MO DOT logo.

IF A SEAL IS PRESENT ON THIS SHEET IT HAS BEEN ELECTRONICALLY SEALED AND DATED.