

---

**Part 1 - Appendix 3A1**  
**Evergy Missouri West Reports**

---

**Missouri 4 CSR 240-22.030 (2)(D)(3) Reporting Requirements**  
**Load Analysis and Forecasting**

(2)(D) For each major class specified pursuant to subsection (2)(A), the utility shall provide , on a seasonal and annual basis for each year of the hisstorical period --

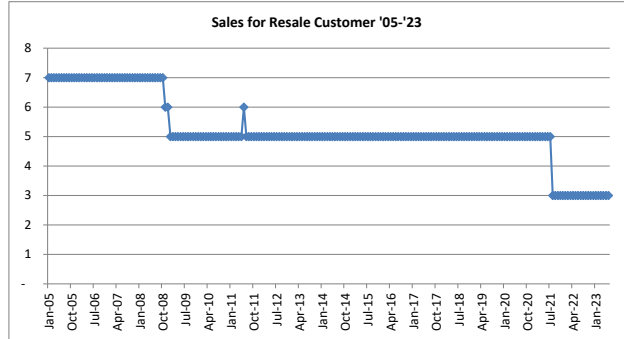
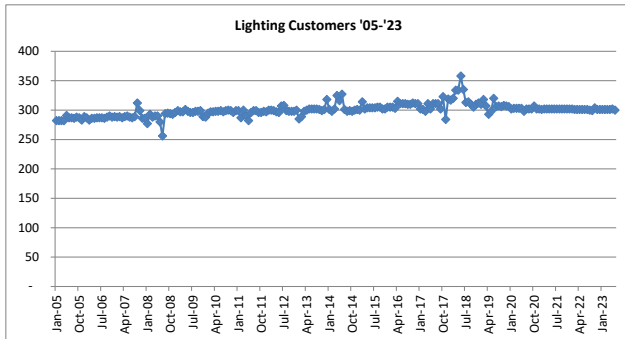
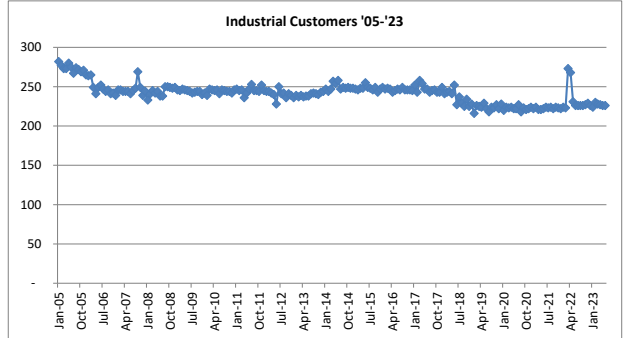
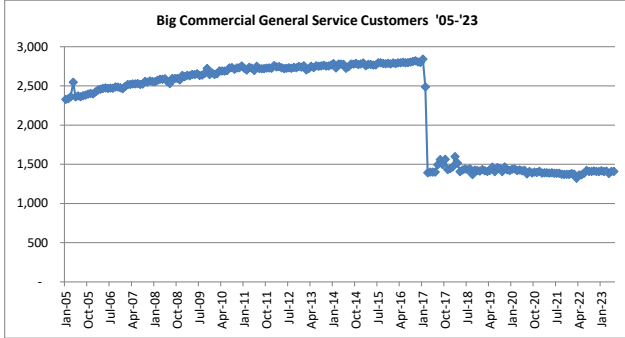
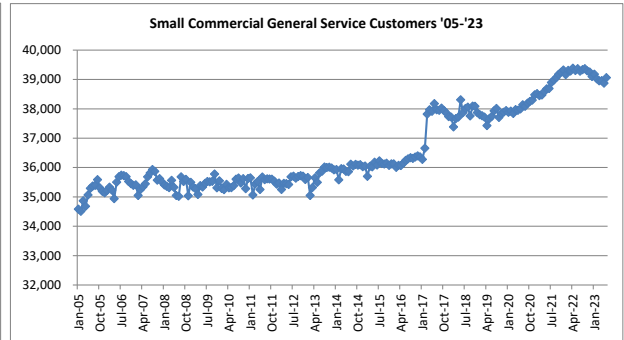
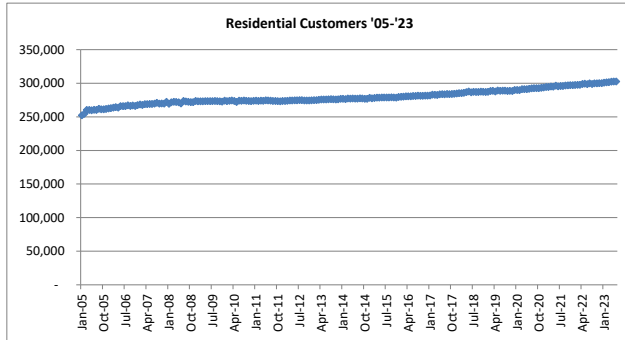
(2)(D)(3) Plots illustrating trends materially affecting electricity consumption over the historical period.

Compliance: See Plots 3A1-1 through 3A1-5 for base-case MO West forecast reports designed to comply with section (2)(D)(3) reporting requirements.

**Linked Files:**

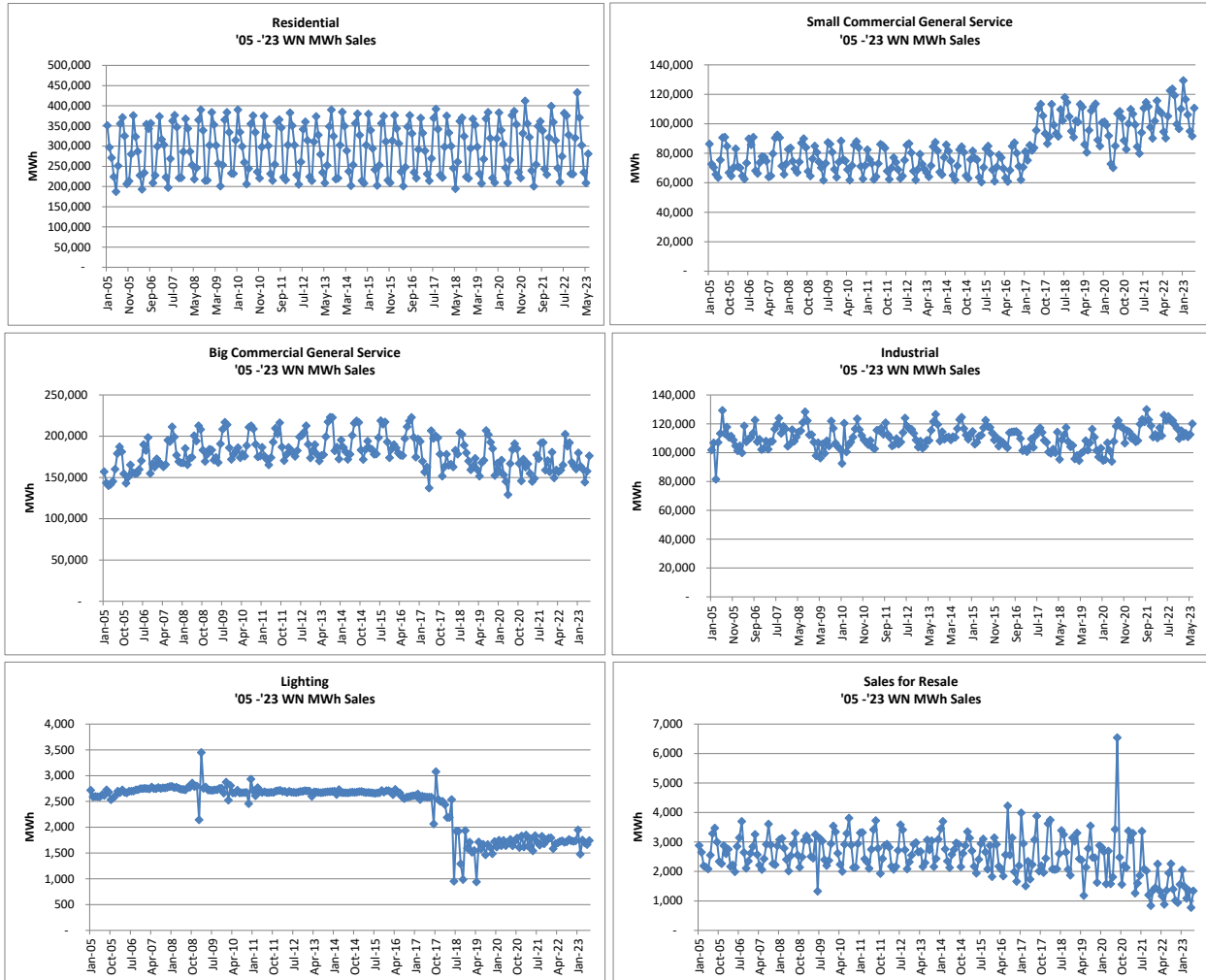
West\_2024RES\_Datalyzer  
West\_2024Com\_Datalyzer  
West\_2024IND\_Datalyzer  
West\_2024Other\_Datalyzer

Plot 3A1-1 Eversource Missouri West Class Customers



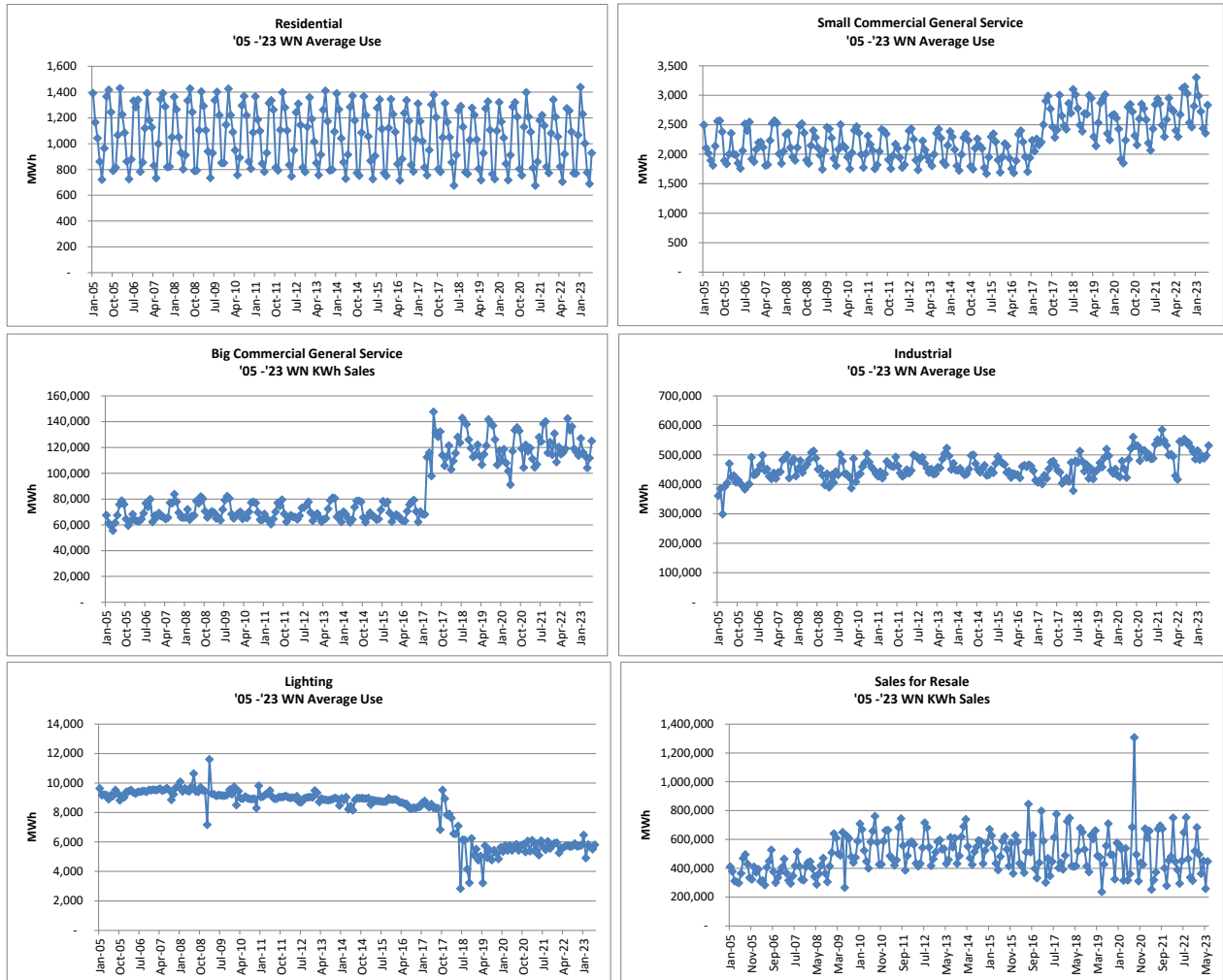
\*2017 decline in Big Commercial is due to rate switchers moving to Small Commercial and consolidation.

Plot 3A1-2 Eversource Missouri West Class Weather Normalized MWh Sales



\*2017 decline in Big Commercial is due to rate switchers moving to Small Commercial and consolidation.

Plot 3A1-3 Eversource Missouri West Class Weather Normalized Average Use



\*2017 increase in average usage in Big Commercial is due to rate switchers moving to Small Commercial and consolidation.

Plot 3A1-4 Evergy Missouri West Class Weather Normalized Peak Demand (MW)

