

**P.S.C. Mo. - No. 17
LOCAL EXCHANGE - MISSOURI PORTION TARIFF**

Southwestern Bell Telephone Company, LLC
d/b/a AT&T Missouri

Title Page
~~Original Sheet 1~~
6th Revised Sheet 1
Replacing 5th Revised Sheet 1

MISSOURI PORTION - CROSS-BOUNDARY EXCHANGE

TITLE SHEET

SOUTHWESTERN BELL TELEPHONE COMPANY, LLC d/b/a

AT&T MISSOURI

Southwestern Bell Telephone Company, LLC d/b/a AT&T Missouri
operates as a Competitive Telecommunications Company.

Effective May 1, 2024, Southwestern Bell Telephone Company, LLC Local Exchange-Missouri Portion Tariff (P.S.C. Mo. – No. 17) adopts the Boundary Maps currently filed with the Missouri Public Services Commission, and supersedes and replaces Southwestern Bell Telephone Company Local Exchange-Missouri Portion Tariff (P.S.C. Mo. – No.17) in its entirety.

Applying to its authorized territories within the State of Missouri.

Issued: April 1, 2024

By Craig Unruh, President - Missouri
St. Louis, Missouri

Effective: May 1, 2024

FILED - Missouri Public Service Commission - 05/01/2024 - TN-2024-0278 - JI-2024-0142

P.S.C. Mo. - No. 17
LOCAL EXCHANGE - MISSOURI PORTION TARIFF

Southwestern Bell Telephone Company, LLC
d/b/a AT&T Missouri

Section 1
~~Original Sheet 1~~
50th Revised Sheet 1
Replacing 49th Revised Sheet 1

The LOCAL EXCHANGE - MISSOURI PORTION TARIFF, P.S.C. Mo.-No. 17, Sections 1 through 6 have been withdrawn. Information regarding rates, terms and conditions for Sections 1 through 6 now appears in the Missouri Guidebook at att.com/servicepublications.

Boundary Maps for the Company's exchanges and base rate areas remain on file in this tariff at the Missouri Public Service Commission.

TRADEMARKS AND SERVICE MARKS

Telcordia® and Common Language® are registered trademarks and iconectiv, CLCI, CLEI, CLFI, CLLI, USOC, FID, NC, NCI and NC/NCI, are trademarks of Telcordia Technologies, Inc. The Common Language codes identified herein are the proprietary information of Telcordia Technologies, Inc. d/b/a iconectiv ("iconectiv") and are licensed to AT&T Services, Inc. The Common Language codes provided herein, if applicable, are solely for the purpose of this Tariff and may not be reproduced, stored or used for any other purpose without the express, written consent of iconectiv.

FILED - Missouri Public Service Commission - 05/01/2024 - TN-2024-0278 - JI-2024-0142

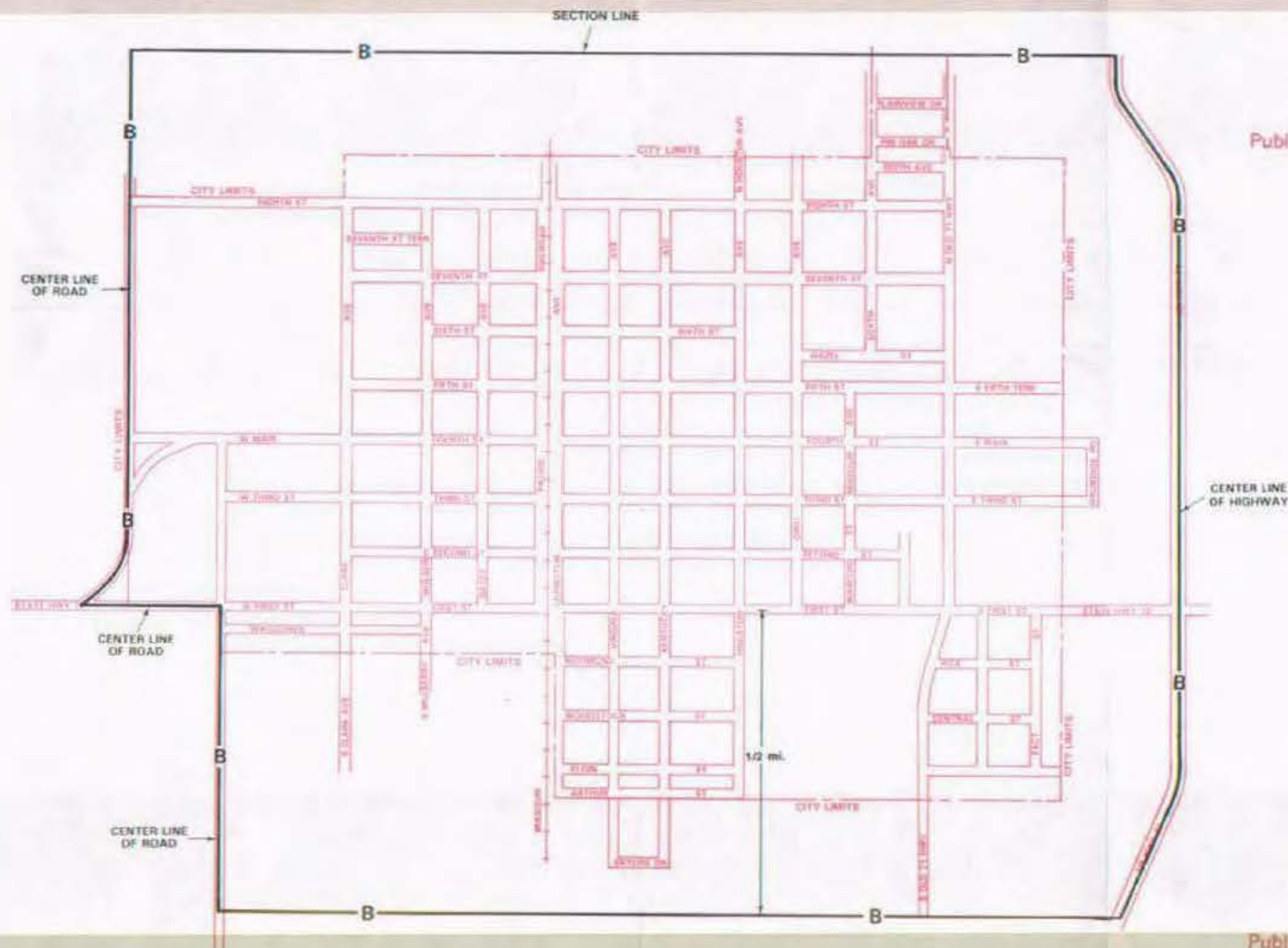
NO SUPPLEMENT TO THIS TARIFF WILL BE ISSUED EXCEPT FOR THE PURPOSE OF CANCELING THIS TARIFF.

P. S. C. Mo. No. 17
BASE RATE AREA MAP

Adrian, Missouri

1st REVISED SHEET 2
REPLACING ORIGINAL SHEET 2

RECEIVED
AUG 14 1991
MISSOURI
Public Service Commission



FILED
SEP 3 0 1991
Public Service Commission

Issued: AUG 23 1991

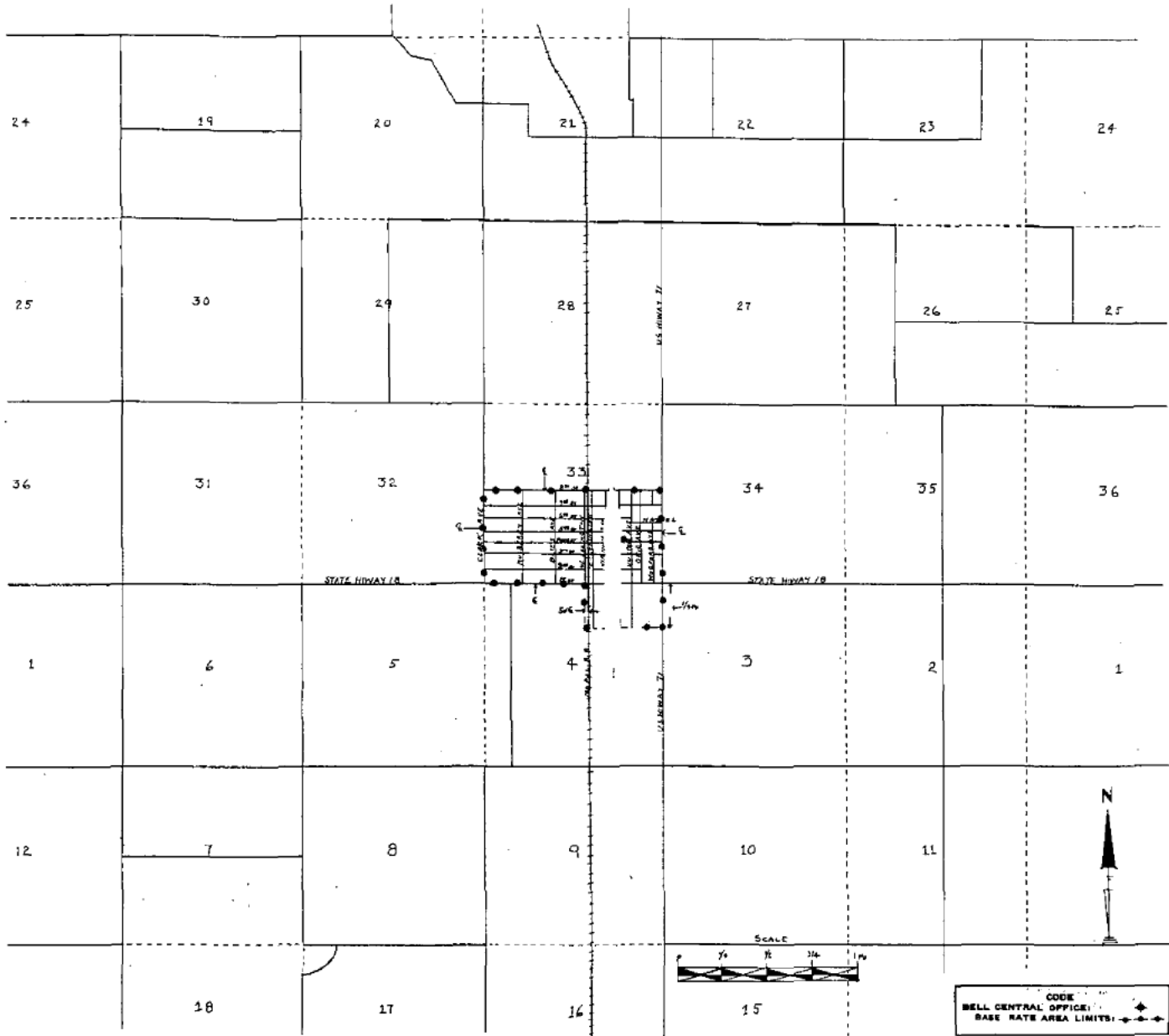
By R. D. BARRON, PRESIDENT, MISSOURI DIVISION
Southwestern Bell Telephone Company
St. Louis, Missouri

Effective: SEP 3 0 1991

NO SUPPLEMENT TO THIS TARIFF WILL BE ISSUED EXCEPT FOR THE PURPOSE OF CANCELING THIS TARIFF.

P. S. C. Mo. No. 17
BASE RATE AREA MAP

ST. LOUIS, MISSOURI
ORIGINAL SHEET 2
REPLACING WESTERN LIGHT & TELEPHONE
COMPANY'S P. S. C. No. 3
INITIAL RATE AREA MAP
REPLACES



Issued: June 1, 1955

By J. P. PETERSON, General Manager
Southwestern Bell Telephone Company
St. Louis, Missouri

Effective: July 1, 1955

NO SUPPLEMENT TO THIS TARIFF WILL BE ISSUED EXCEPT FOR THE PURPOSE OF CANCELING THIS TARIFF.

P. S. C. Mo. No. 17 EXCHANGE AREA MAP

Adrian, Missouri

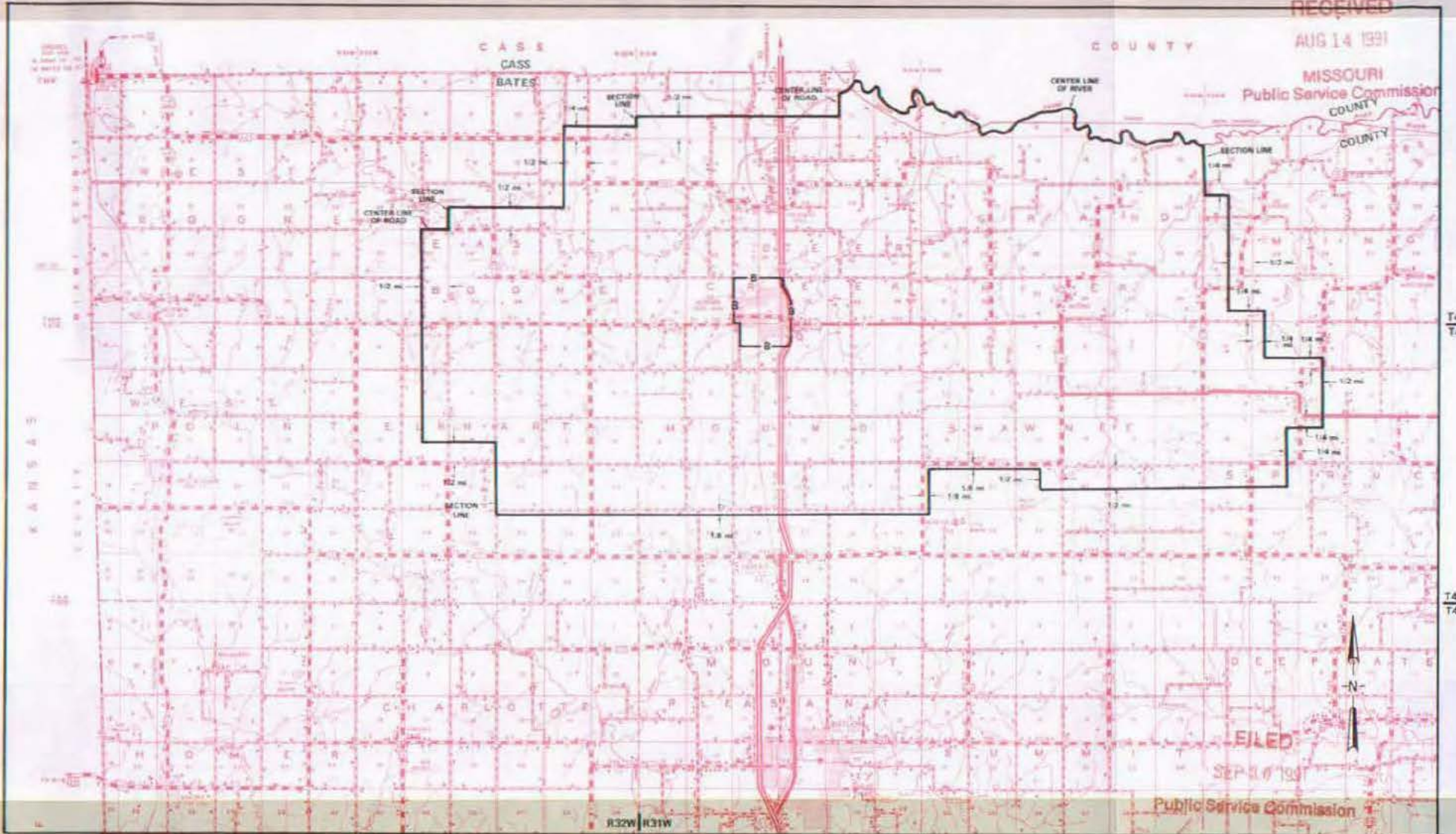
9th REVISED SHEET 3
REPLACING 8th REVISED SHEET 3

RECEIVED

AUG 14 1991

MISSOURI
Public Service Commission

COUNTY



FILED

SEP 3 1991

Public Service Commission

ISSUED: AUG 23 1991

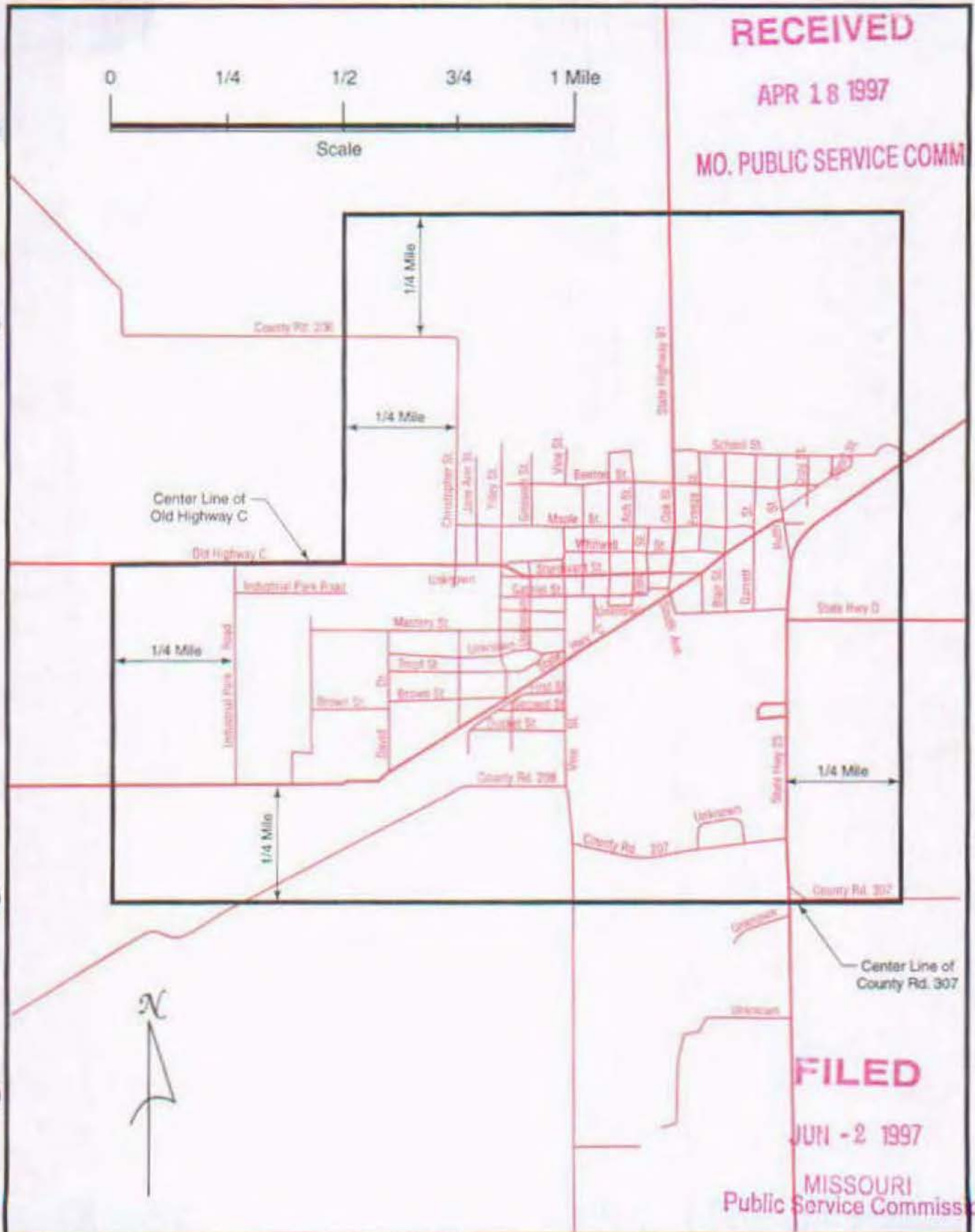
By R. D. BARRON, PRESIDENT, MISSOURI DIVISION
Southwestern Bell Telephone Company
St. Louis, Missouri

Effective: SEP 30 1991

NO SUPPLEMENT TO THIS TARIFF WILL BE ISSUED EXCEPT FOR THE PURPOSE OF CANCELLING THIS TARIFF.

P. S. C. Mo. No. 17
BASE RATE AREA MAP

Advance, Missouri
2nd REVISED SHEET 1-4
REPLACING 1st REVISED SHEET 1-4



RECEIVED
APR 18 1997
MO. PUBLIC SERVICE COMM

FILED
JUN - 2 1997
MISSOURI
Public Service Commission

Issued: April 18, 1997

By Karen E. Jennings, President Missouri
Southwestern Bell Telephone Company
St. Louis, Missouri

Effective: June 2, 1997

NO SUPPLEMENT TO THIS TARIFF WILL BE ISSUED EXCEPT FOR THE PURPOSE OF CANCELING THIS TARIFF.

P. S. C. Mo. No. 17
EXCHANGE AREA MAP

RECEIVED

Advance, Missouri

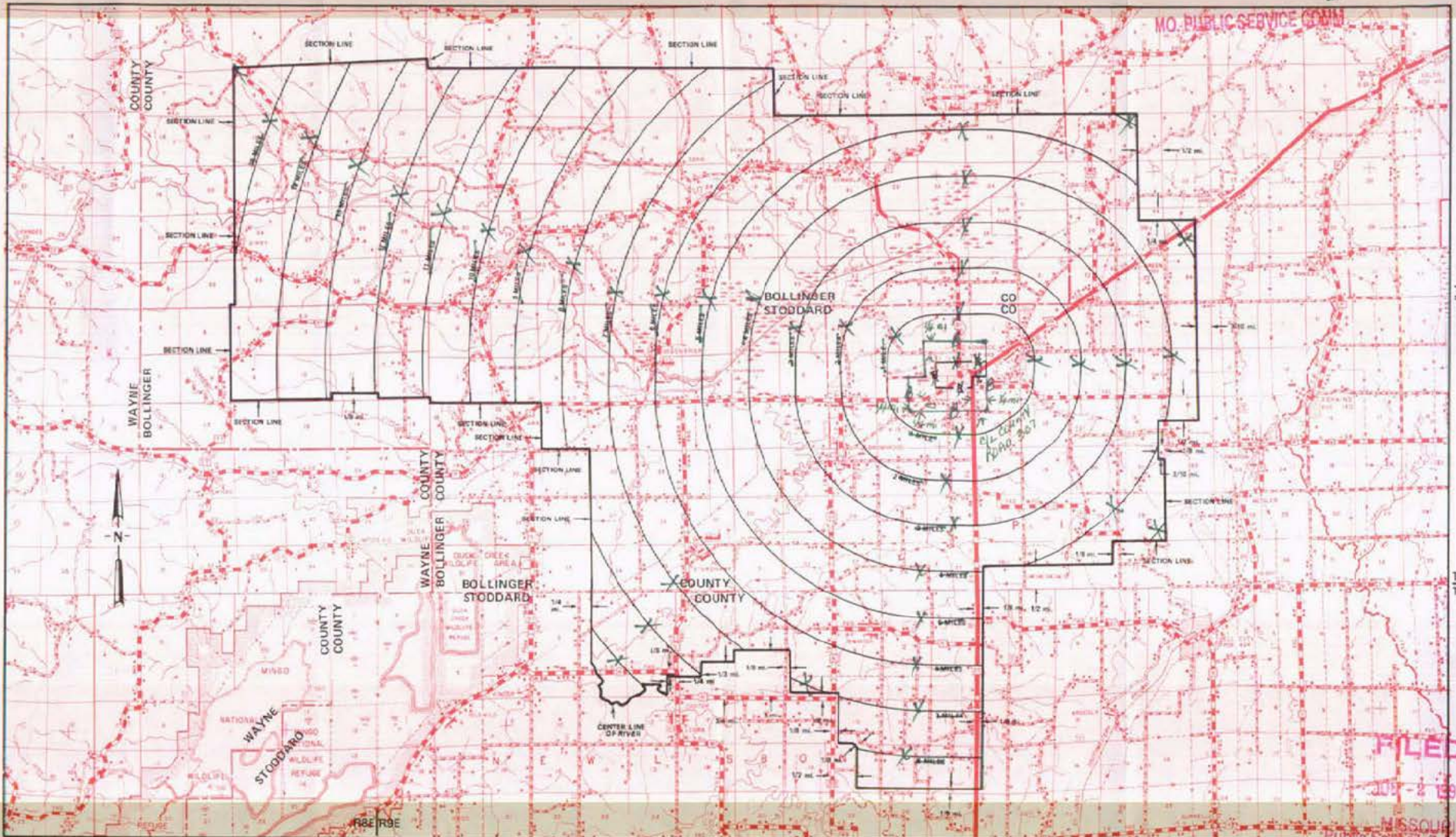
APR 18 1997

REVISED SHEET 3

REVISED SHEET 3

10

MO. PUBLIC SERVICE COM.



T29N
T28N

T28N
T27N

FILED

JUL - 2 1997

MISSOURI

R7E|R8E

By R. D. BARRON, President, Missouri Division
Southwestern Bell Telephone Company
St. Louis, Missouri

R9E|R10E

R10E|R11E

R11E|R12E

Issued: APRIL 6 1997
April 18, 1997

Effective: MAY 7 1994
June 2, 1997

NO SUPPLEMENT TO THIS TARIFF WILL
BE ISSUED EXCEPT FOR THE PURPOSE OF
CANCELING THIS TARIFF.

P. S. C. Mo. No. 17
BASE RATE AREA MAP

Agency, Missouri

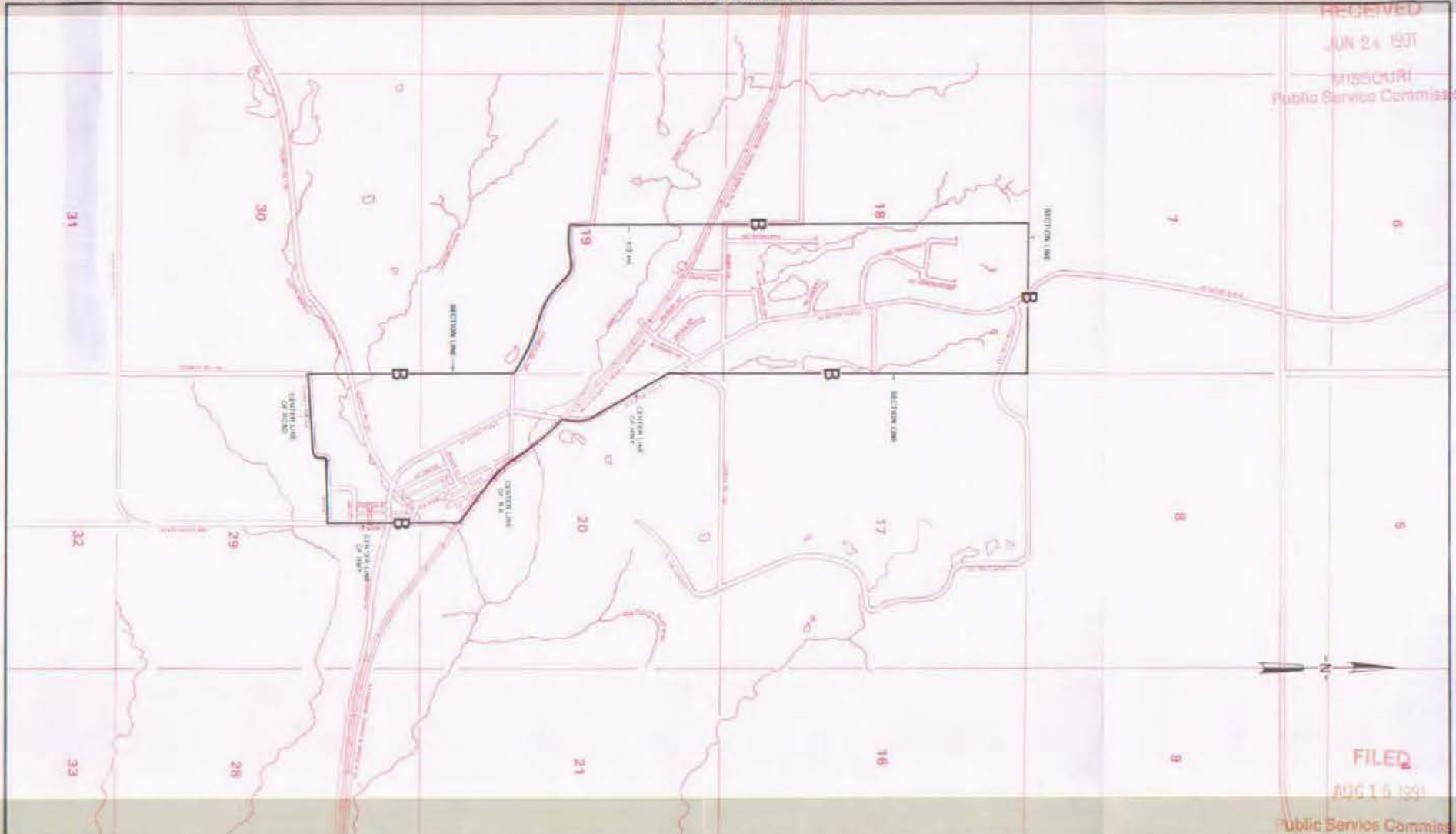
1st REVISED SHEET 2
REPLACING ORIGINAL SHEET 2

RECEIVED

JUN 24 1991

MISSOURI

Public Service Commission



FILED

AUG 15 1991

Public Service Commission

JUN 24 1991

Issued: _____

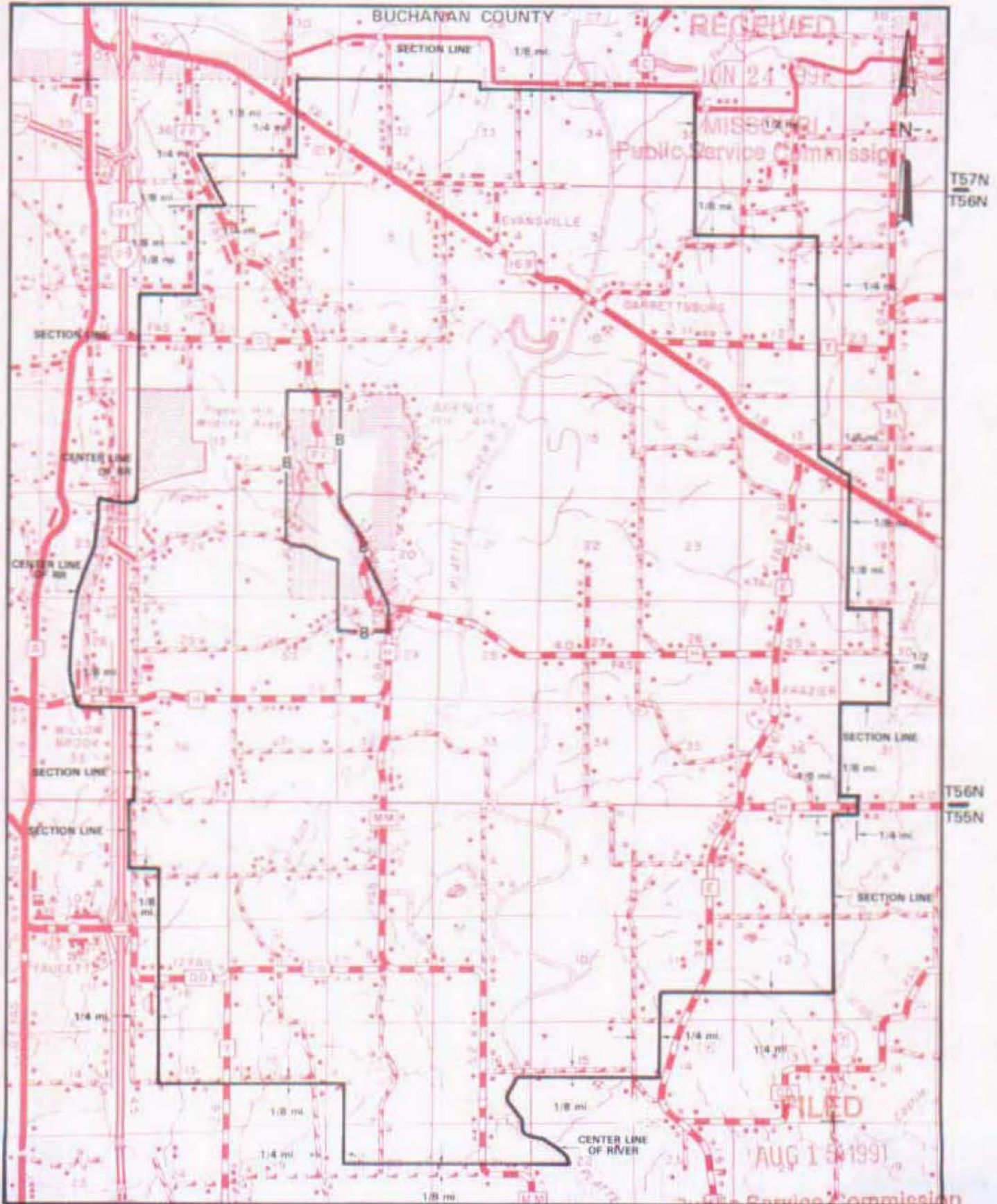
By R. O. BARRON, PRESIDENT, MISSOURI DIVISION
Southwestern Bell Telephone Company
St. Louis, Missouri

Effective: AUG 15 1991

NO SUPPLEMENT TO THIS TARIFF WILL BE ISSUED EXCEPT FOR THE PURPOSE OF CANCELING THIS TARIFF.

9th REVISED SHEET 3
REPLACING 8th REVISED SHEET 3

P. S. C. Mo. No. 17 EXCHANGE AREA MAP



Issued: JUN 24 1991 R35W | R34W

By R. D. BARRON, PRESIDENT, MISSOURI DIVISION
Southwestern Bell Telephone Company
St. Louis, Missouri

Effective: AUG 15 1991 R34W | R33W

SBC PSC MO #17
Altenburg – Frohna, Missouri
Original Sheet 2

Non-Scannable Map

(Is viewable in the Data Center
200 Madison Street, 1st Floor
Jefferson City MO)

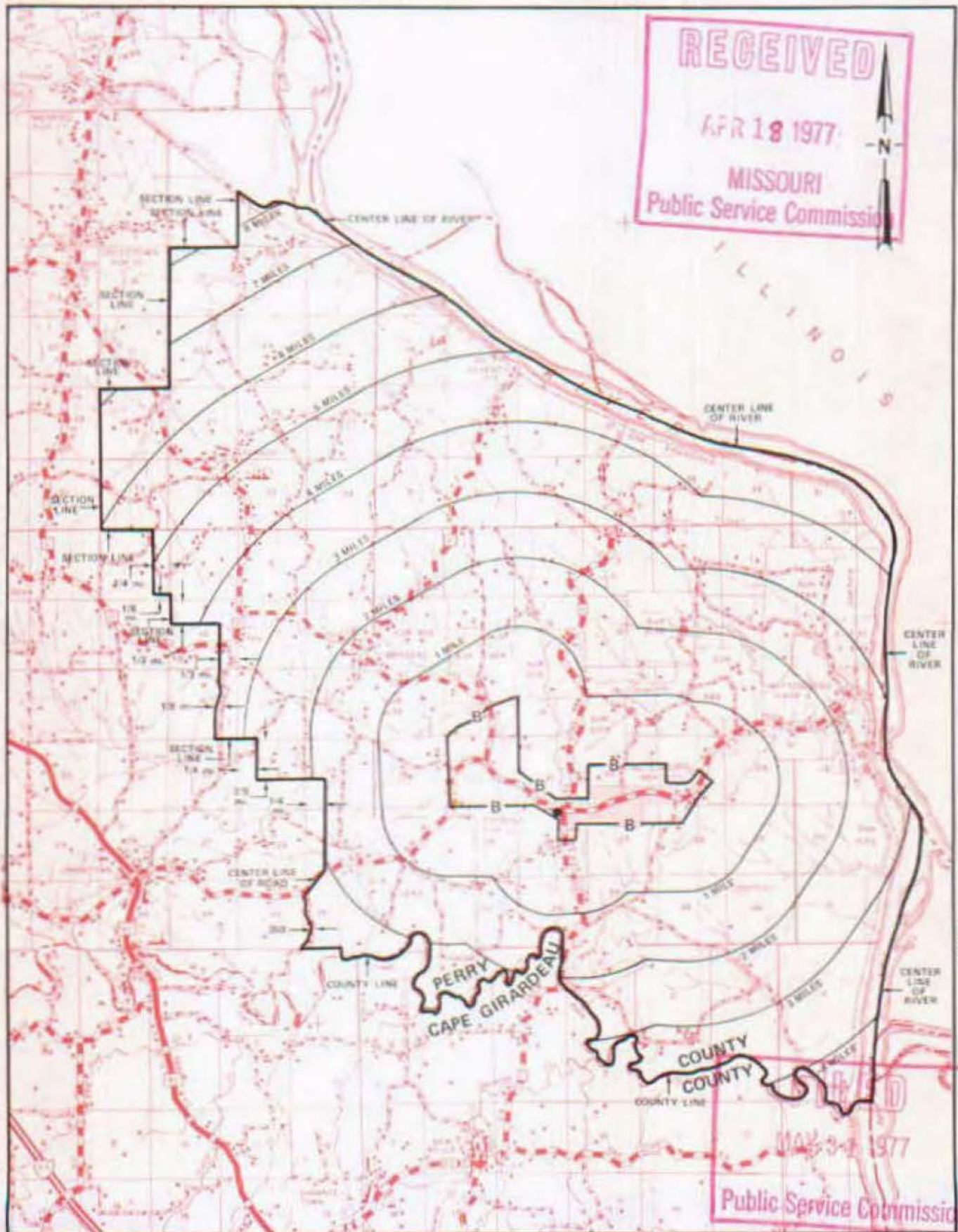
NO SUPPLEMENT TO THIS TARIFF WILL BE ISSUED EXCEPT FOR THE PURPOSE OF CANCELING THIS TARIFF.

P. S. C. Mo. No. 17

Altenburg-Frohna, Missouri

EXCHANGE AREA MAP

2nd REVISED SHEET 2
REPLACING 1st REVISED SHEET 2



T36N
T35N

T35N
T34N

T34N
T33N

R12E | R13E

R13E | R14E

By R. R. SHOCKLEY, Vice President, Missouri
Southwestern Bell Telephone Company

NO SUPPLEMENT TO THIS TARIFF WILL
BE ISSUED EXCEPT FOR THE PURPOSE
OF CANCELING THIS TARIFF.

P. S. C. Mo.-No. 17

ALTON, MISSOURI
1ST REVISED SHEET 2
CANCELING ORIGINAL SHEET 2

SOUTHWESTERN BELL TELEPHONE COMPANY
LOCAL EXCHANGE TARIFF

This exchange was sold to the South Missouri Telephone Company, effective August 1, 1961, and, therefore, all rates contained in Sheet 1-A of the Local Exchange Tariff and rate practices formerly authorized for this exchange are withdrawn.

RECEIVED
JUN 30 1961
MISSOURI
Public Service Comm.

FILED

AUG 1 - 1961

PUBLIC SERVICE COMMISSION

Issued under Order of the Public Service Commission Case No. 14208

Issued: July 1, 1961

Effective: August 1, 1961

By F. B. HUNT, Vice President and General Manager
St. Louis, Missouri

SOUTHWESTERN BELL TELEPHONE COMPANY
LOCAL EXCHANGE TARIFF

This exchange was sold to the South Missouri Telephone Company, effective August 1, 1961, and, therefore, all rates contained in Sheet 1-A of the Local Exchange Tariff and rate practices formerly authorized for this exchange are withdrawn.

RECEIVED
JUN 30 1961
MISSOURI
Public Service Comm.

FILED
AUG 1 - 1961

PUBLIC SERVICE COMMISSION

Issued under Order of the Public Service Commission Case No. 14208

Issued: July 1, 1961

Effective: August 1, 1961

By F. B. HUNT, Vice President and General Manager
St. Louis, Missouri

NO SUPPLEMENT TO THIS TARIFF WILL BE ISSUED EXCEPT FOR THE PURPOSE OF CANCELING THIS TARIFF.

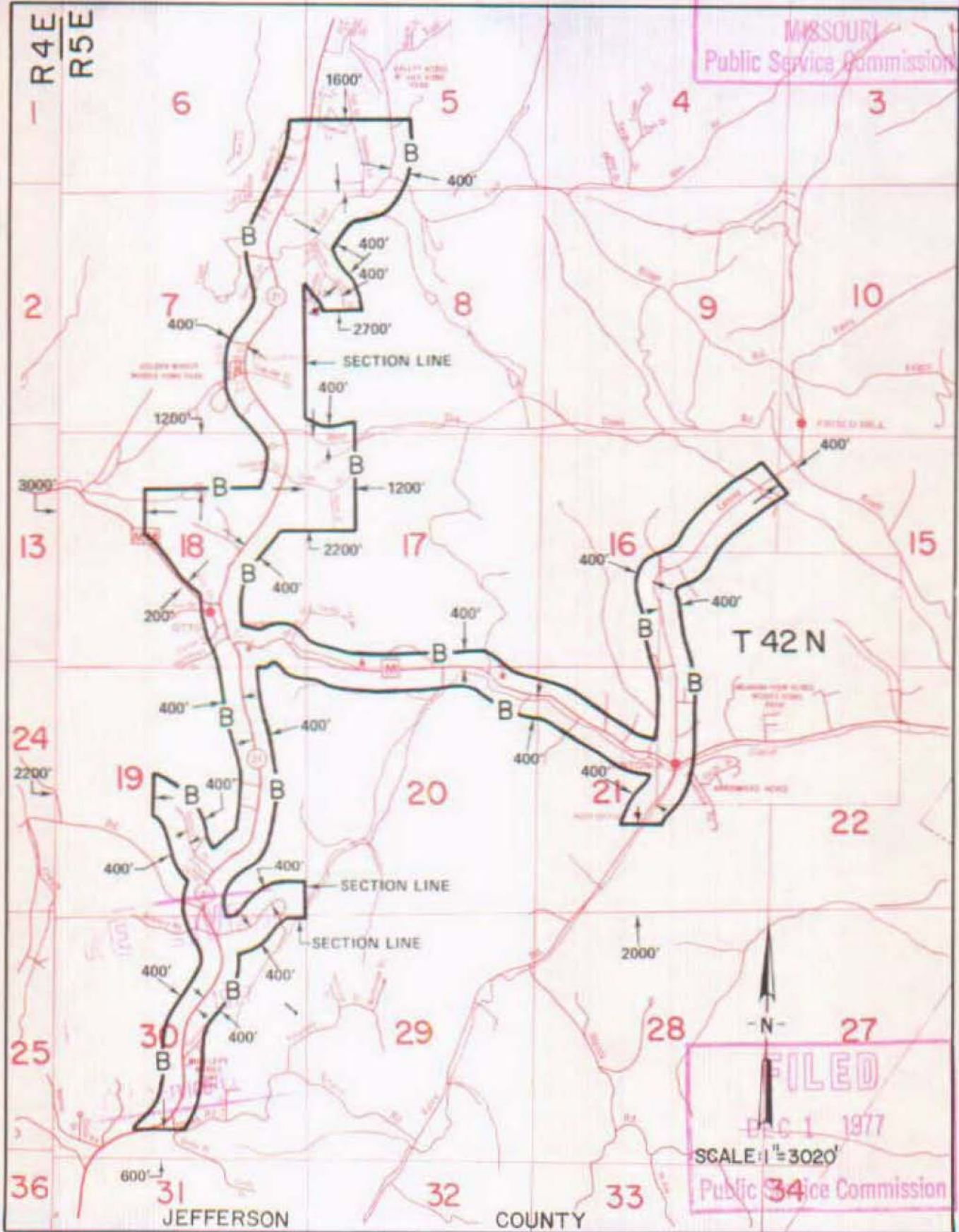
P. S. C. Mo. No. 17

BASE RATE AREA MAP

Antonia, Missouri
1st REVISED SHEET 2
REPLACING ORIGINAL SHEET 2

MAY 20 1977

MISSOURI
Public Service Commission



By R. R. SHOCKLEY, Vice President, Missouri
Southwestern Bell Telephone
St. Louis, Missouri

Issued: MAY 23 1977

Effective: DEC 1 1977

FILED
DEC 1 1977
Public Service Commission

NO SUPPLEMENT TO THIS TARIFF WILL BE ISSUED EXCEPT FOR THE PURPOSE OF CANCELING THIS TARIFF.

P. S. C. Mo. No. 17

Antonia, Missouri

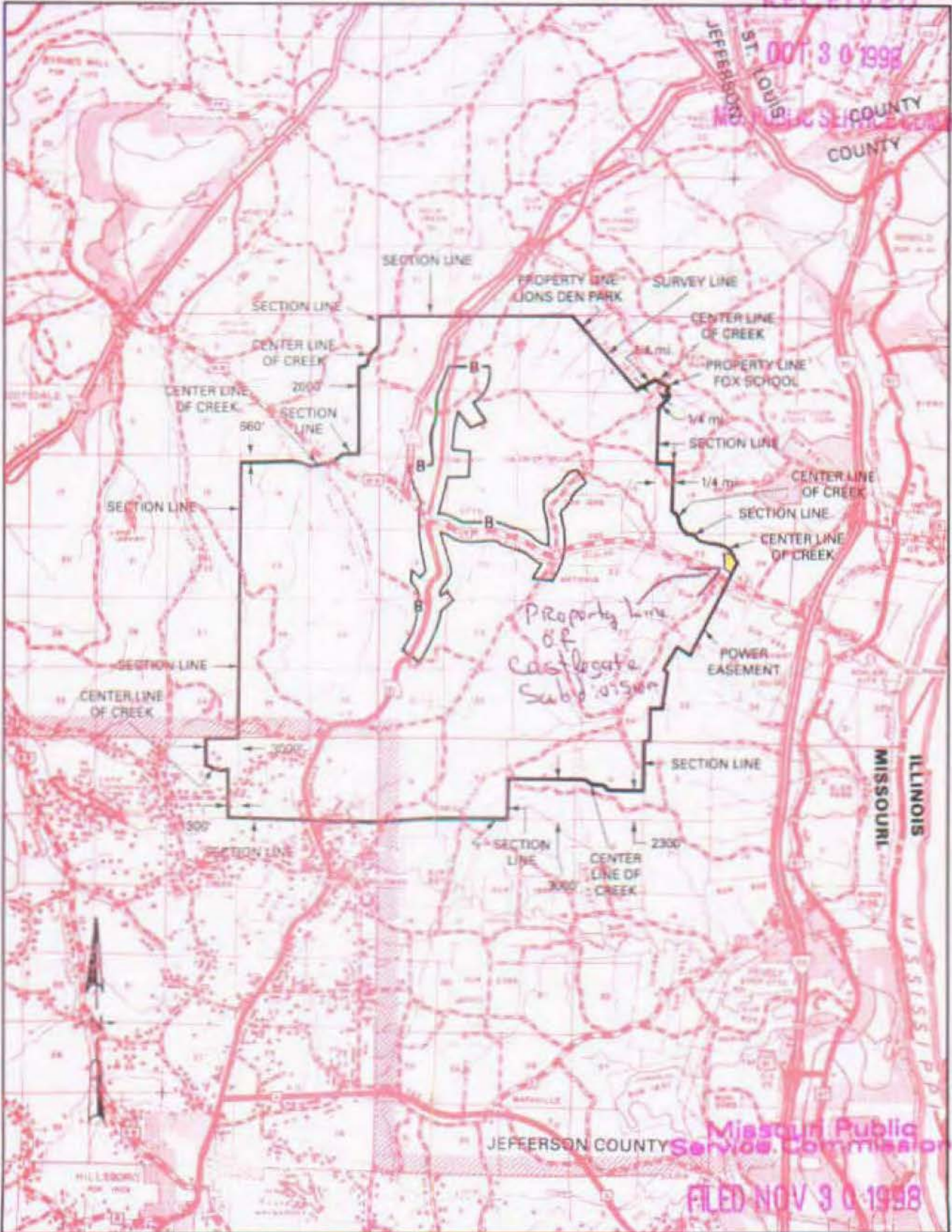
7th REVISED SHEET 3
REPLACING 6th REVISED SHEET 3

EXCHANGE AREA MAP

RECEIVED

OCT 30 1998

MISSOURI PUBLIC SERVICE COMMISSION
JEFFERSON COUNTY
ST. LOUIS COUNTY



T43N
T42N

T42N
T41N

T41N
T40N

OCT 30 1998

R4E | R5E
Priscilla Hill-Ardoin
By HORACE WILKINS, JR. President - Missouri
Southwestern Bell Telephone Company
St. Louis, Missouri

R5E | R6E
NOV 30 1998

Issued: ~~August 15, 1996~~

Effective: ~~September 15, 1996~~

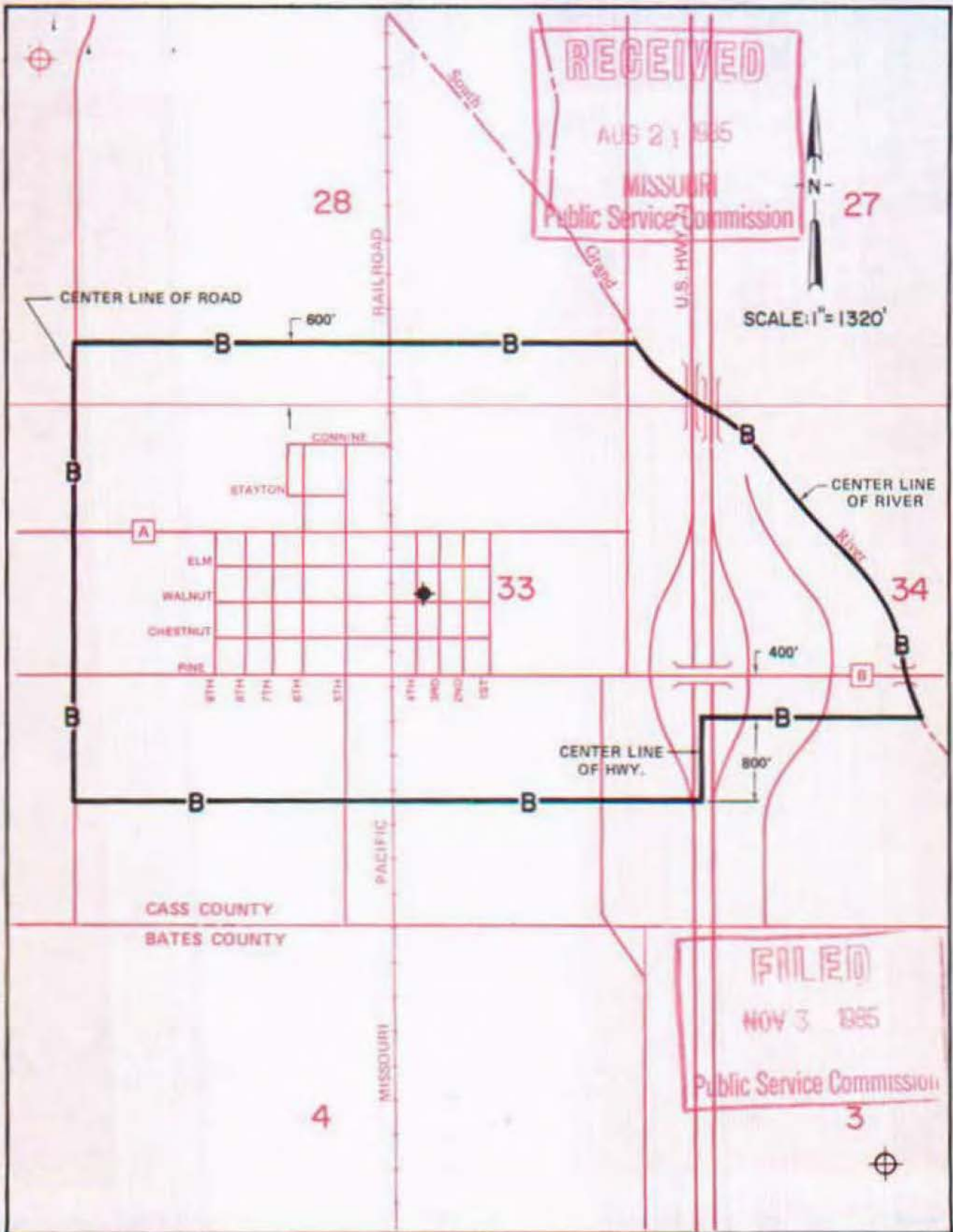
Missouri Public Service Commission
FILED NOV 30 1998

NO SUPPLEMENT TO THIS TARIFF WILL BE ISSUED EXCEPT FOR THE PURPOSE OF CANCELING THIS TARIFF.

P. S. C. Mo. No. 17 BASE RATE AREA MAP

Archie, Missouri

1st REVISED SHEET 2
REPLACING ORIGINAL SHEET 2



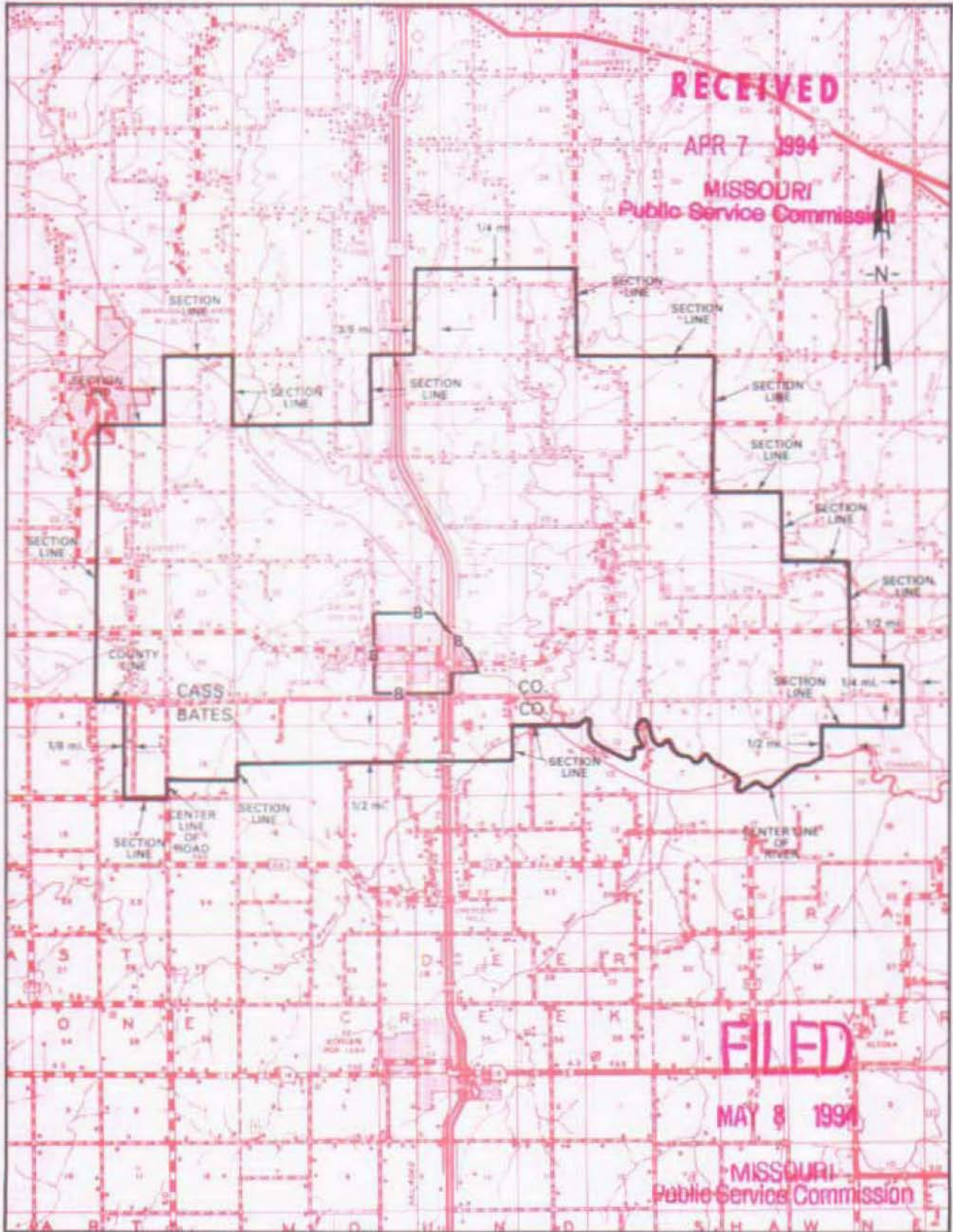
NO SUPPLEMENT TO THIS TARIFF WILL
BE ISSUED EXCEPT FOR THE PURPOSE OF
CANCELING THIS TARIFF.

P. S. C. Mo. No. 17

Archie, Missouri

8th REVISED SHEET 3
REPLACING 7th REVISED SHEET 3

EXCHANGE AREA MAP



R32W | R31W

R31W | R30W

By M. H. SCHULTEIS, Executive Director - External Affairs
Southwestern Bell Telephone Company
St. Louis, Missouri

Issued: April 8, 1994

Effective: May 8, 1994

SBC PSC MO #17
Argyle, Missouri
Original Sheet 2
Replacing Ozark Central
Telephone Company
P.S.C. Mo. No. 1
Original Sheet 2

Non-Scannable Map

(Is viewable in the Data Center
200 Madison Street, 1st Floor
Jefferson City MO)

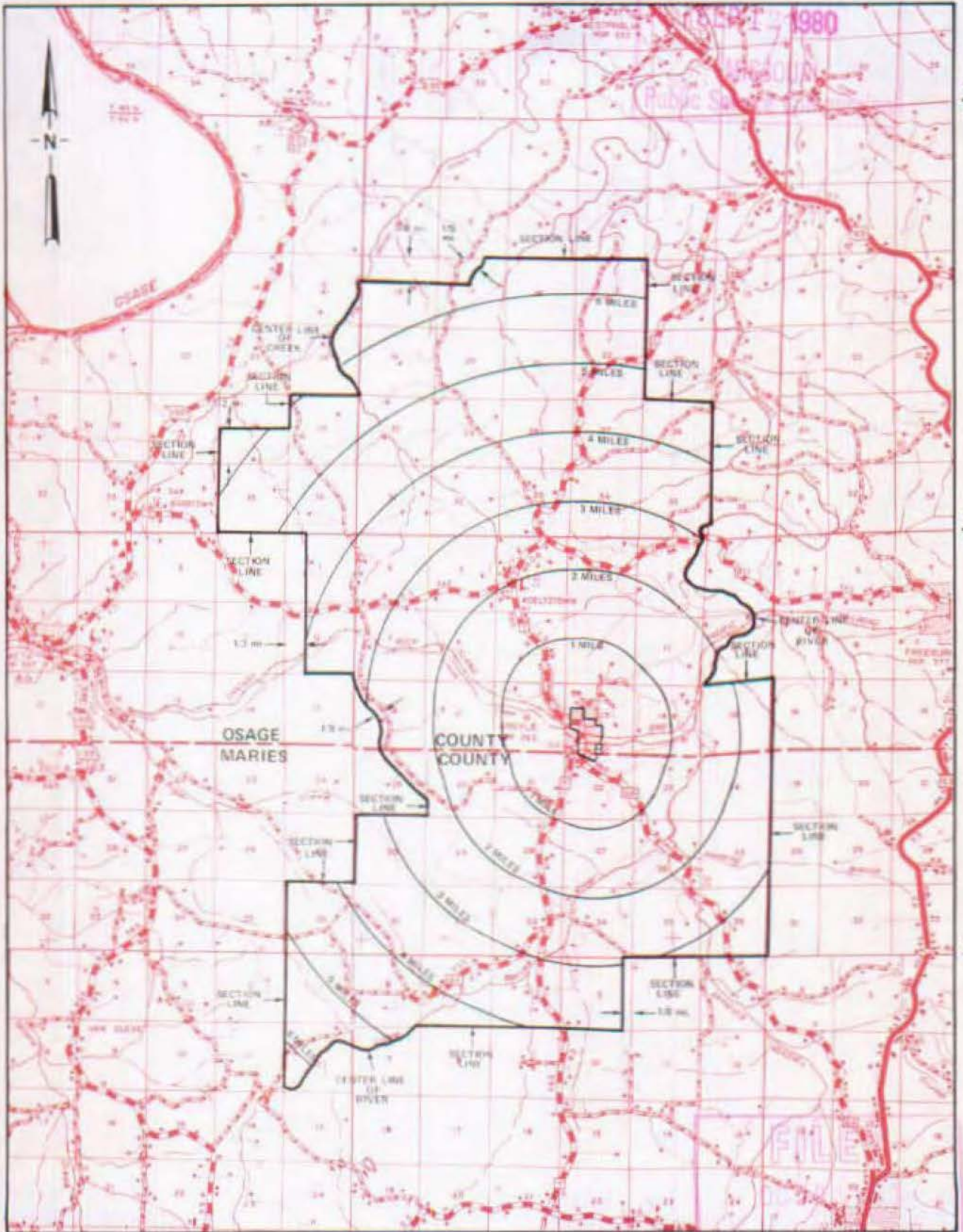
NO SUPPLEMENT TO THIS TARIFF WILL BE ISSUED EXCEPT FOR THE PURPOSE OF CANCELING THIS TARIFF.

P. S. C. Mo. No. 17

Argyle, Missouri

EXCHANGE AREA MAP

6th REVISED SHEET 3
REPLACING 4th REVISED SHEET 3



R11W | R10W

By R. R. SHOCKLEY, Vice President, Missouri
Southwestern Bell Telephone Company

St. Louis, Missouri

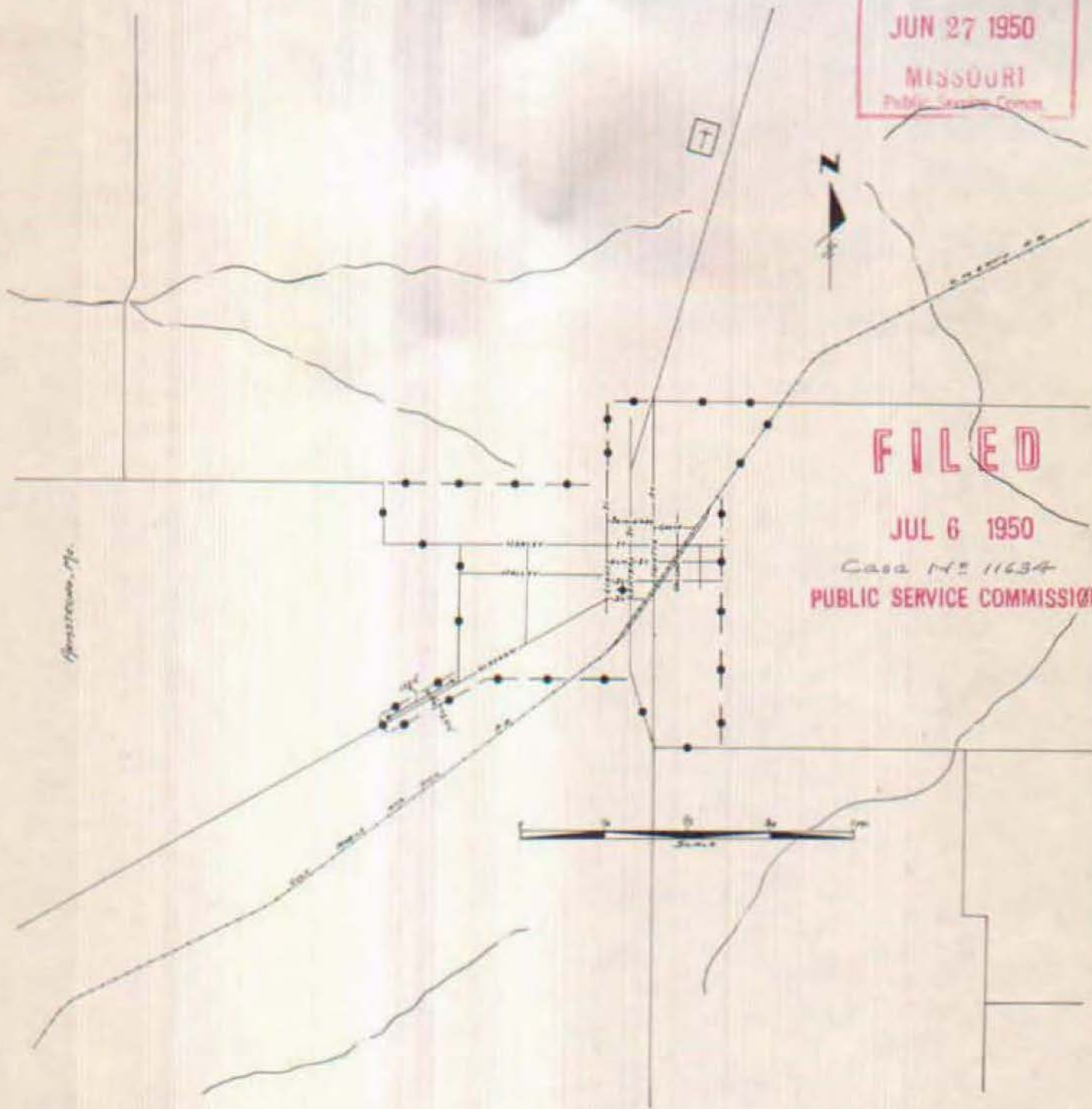
R10W | R9W
Public Service Commission

NO SUPPLEMENT TO THIS TARIFF WILL
BE ISSUED EXCEPT FOR THE PURPOSE OF
CANCELING THIS TARIFF.



Armstrong, Missouri
ORIGINAL SHEET 2
REPLACING ORIGINAL SHEET 1-A

P. S. C.-Mo. No. 17
BASE RATE AREA MAP

RECEIVED
JUN 27 1950
MISSOURI
Public Service Commission



FILED
JUL 6 1950
Case No 11634
PUBLIC SERVICE COMMISSION

CODE
BELL CENTRAL OFFICE: 
BASE RATE AREA LIMITS: 

Issued: June 27, 1950

Effective: July 6, 1950

By H. R. TOWLES, General Manager
Southwestern Bell Telephone Company
St. Louis, Missouri

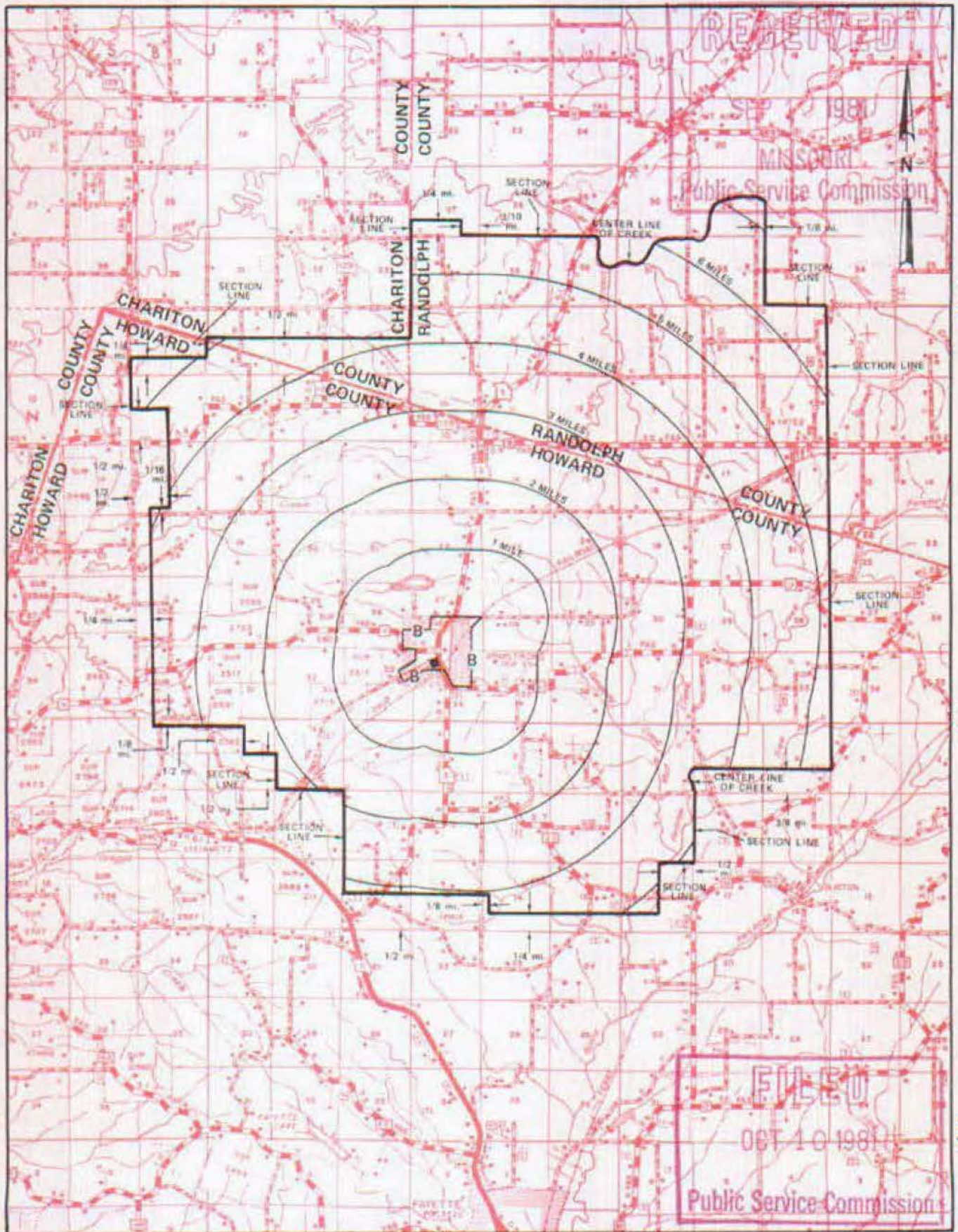
NO SUPPLEMENT TO THIS TARIFF WILL BE ISSUED EXCEPT FOR THE PURPOSE OF CANCELING THIS TARIFF.

P. S. C. Mo. No. 17

Armstrong, Missouri

EXCHANGE AREA MAP

8th REVISED SHEET 3
REPLACING 7th REVISED SHEET 3



R17W | R16W

R16W | R15W

By R. R. SHOCKLEY, Vice President, Missouri
Southwestern Bell Telephone Company

SBC PSC MO #17
Ash Grove, Missouri
Original Sheet 2
Replacing Western Light
& Telephone Company's
P.S.C. Mo. No. 6
Initial Rate Area Map
Greene County

Non-Scannable Map

(Is viewable in the Data Center
200 Madison Street, 1st Floor
Jefferson City MO)

LEGEND

N

CITY

EXCHANGE AREA BOUNDARY

BASE RATE AREA BOUNDARY

SCALE: 3/8" = 1 MILE

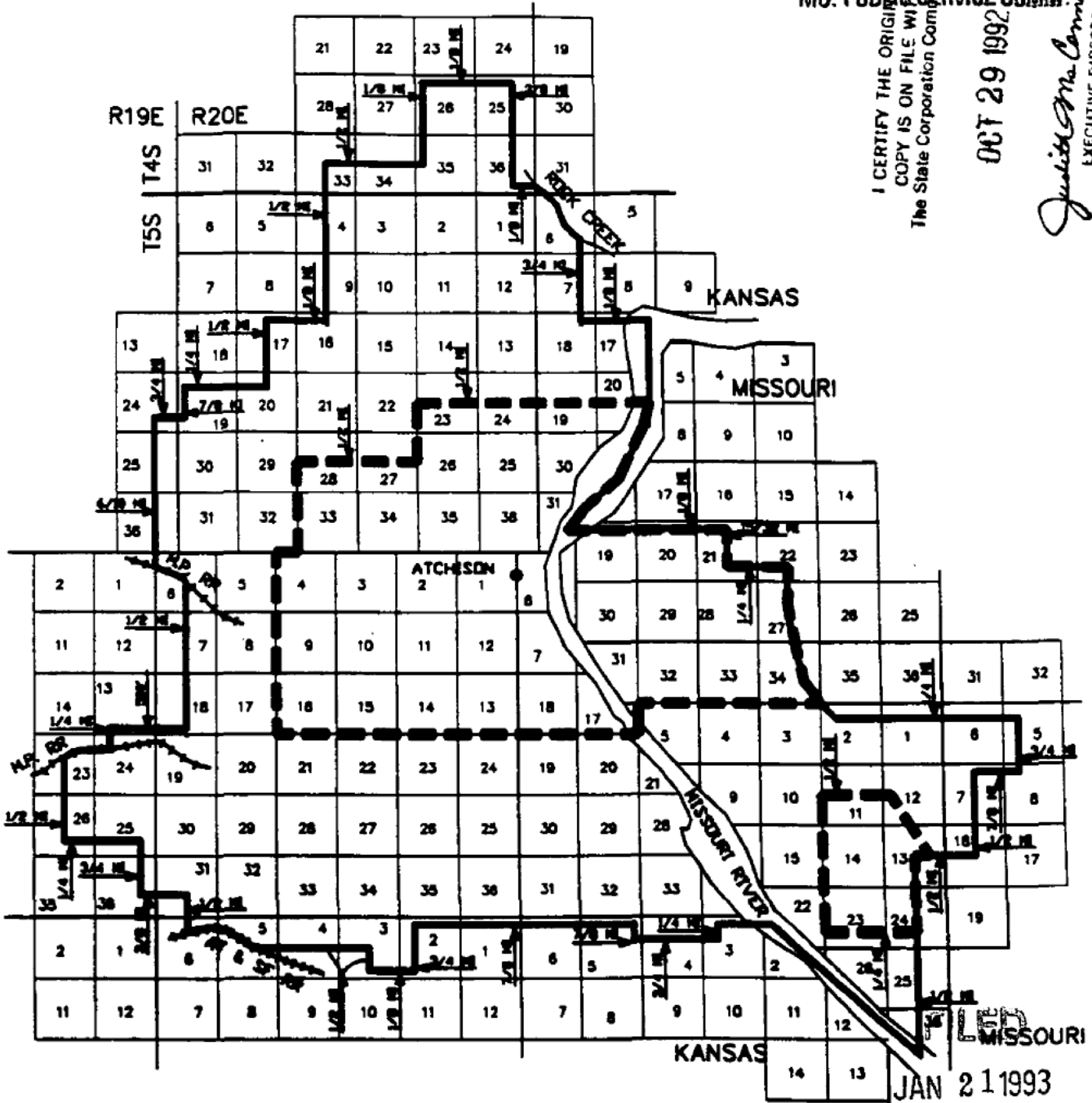
ATCHISON, KANSAS
 11th Revised Sheet 1-B
 Replacing 10th Revised Sheet 1-B

RECEIVED

DEC 4 1992

EXCHANGE AREA MAP

MO. PUBLIC SERVICE COMM.
 I CERTIFY THE ORIGINAL COPY IS ON FILE WITH The State Corporation Commission
 OCT 29 1992
Judith M. Connell
 EXECUTIVE DIRECTOR



FILED
 JAN 21 1993

MO. PUBLIC SERVICE COMM.
 JAN 22 1993

EFFECTIVE APR 8, 1992 THE ONLY GRADE OF SERVICE AVAILABLE IS ONE PARTY

ISSUED: MAR 18 1992 EFFECTIVE: APR 08 1992

BY: J.W. CALLAWAY, President - Kansas Division
 Southwestern Bell Telephone Company
 Topeka, Kansas

Commission Docket Number 166856

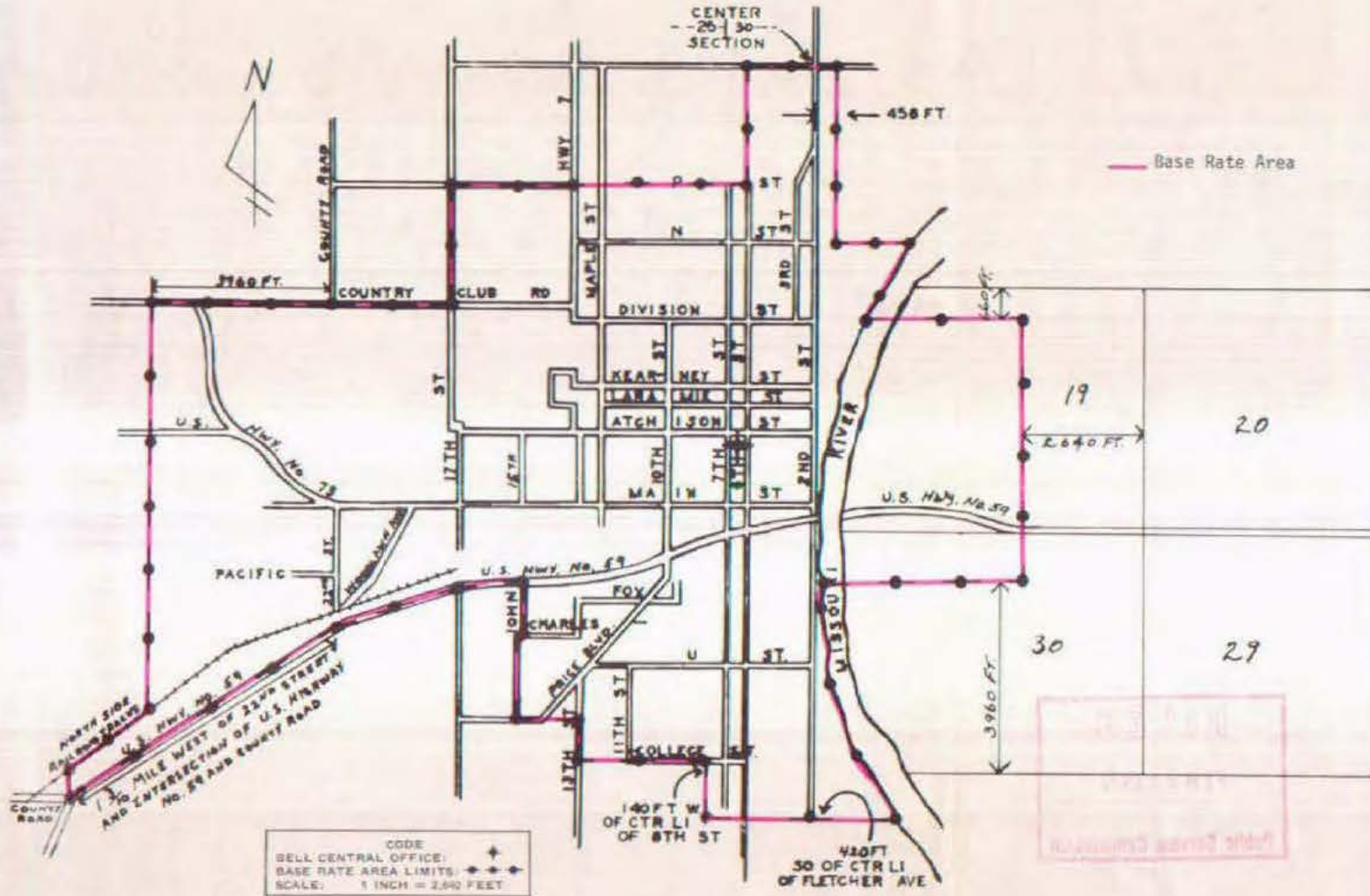
FILED MAR 19 1992

THE STATE CORPORATION COMMISSION
 OF KANSAS

NO SUPPLEMENT TO THIS TARIFF WILL BE ISSUED EXCEPT FOR THE PURPOSE OF CANCELLING THIS TARIFF.

Missouri Portion - Atchison, Kansas Exchange
ORIGINAL SHEET 2

P. S. C. Mo. No. 17
BASE RATE AREA MAP



Issued: JAN 28 1971

Effective: FEB 27 1971

By R. R. SHOCKLEY, Vice President, Missouri-Illinois
Southwestern Bell Telephone Company
St. Louis, Missouri

NO SUPPLEMENT TO THIS TARIFF WILL BE ISSUED EXCEPT FOR THE PURPOSE OF CANCELLING THIS TARIFF.

Missouri Portion - Atchison, Kansas Exchange

5th REVISED SHEET 3
REPLACING 4th REVISED SHEET 3

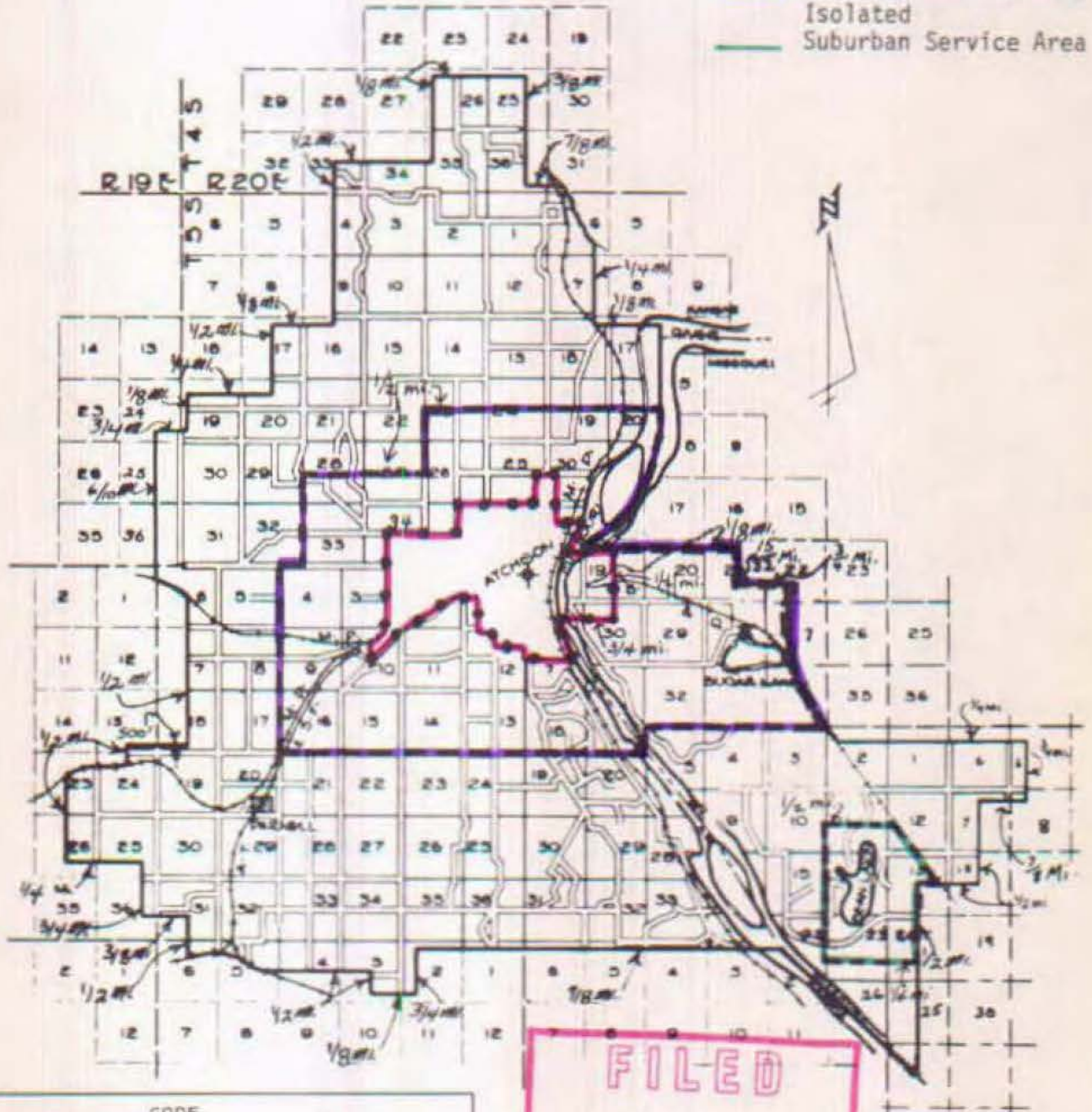
RECEIVED

JAN 25 1971


MISSOURI
Public Service Commission


P. S. C. Mo. No. 17
EXCHANGE AREA MAP


- Base Rate Area
- Suburban Service Area
- Isolated
- Suburban Service Area





CODE

BELL CENTRAL OFFICE: 

BASE RATE AREA LIMITS: 

SUBURBAN SERVICE AREA LIMITS: 

ISOLATED SUBURBAN SERVICE AREA LIMITS: 

EXCHANGE AREA LIMITS: 

SCALE: 3/8 INCH = 1 MILE

FILED

FEB 27 1971

Public Service Commission

Issued: JAN 28 1971

Effective: FEB 27 1971

By R. R. SHOCKLEY, Vice President, Missouri-Illinois
Southwestern Bell Telephone Company
St. Louis, Missouri