

NO SUPPLEMENT TO THIS TARIFF WILL BE ISSUED EXCEPT FOR THE PURPOSE OF CANCELING THIS TARIFF.

P. S. C. Mo. No. 17

BASE RATE AREA MAP

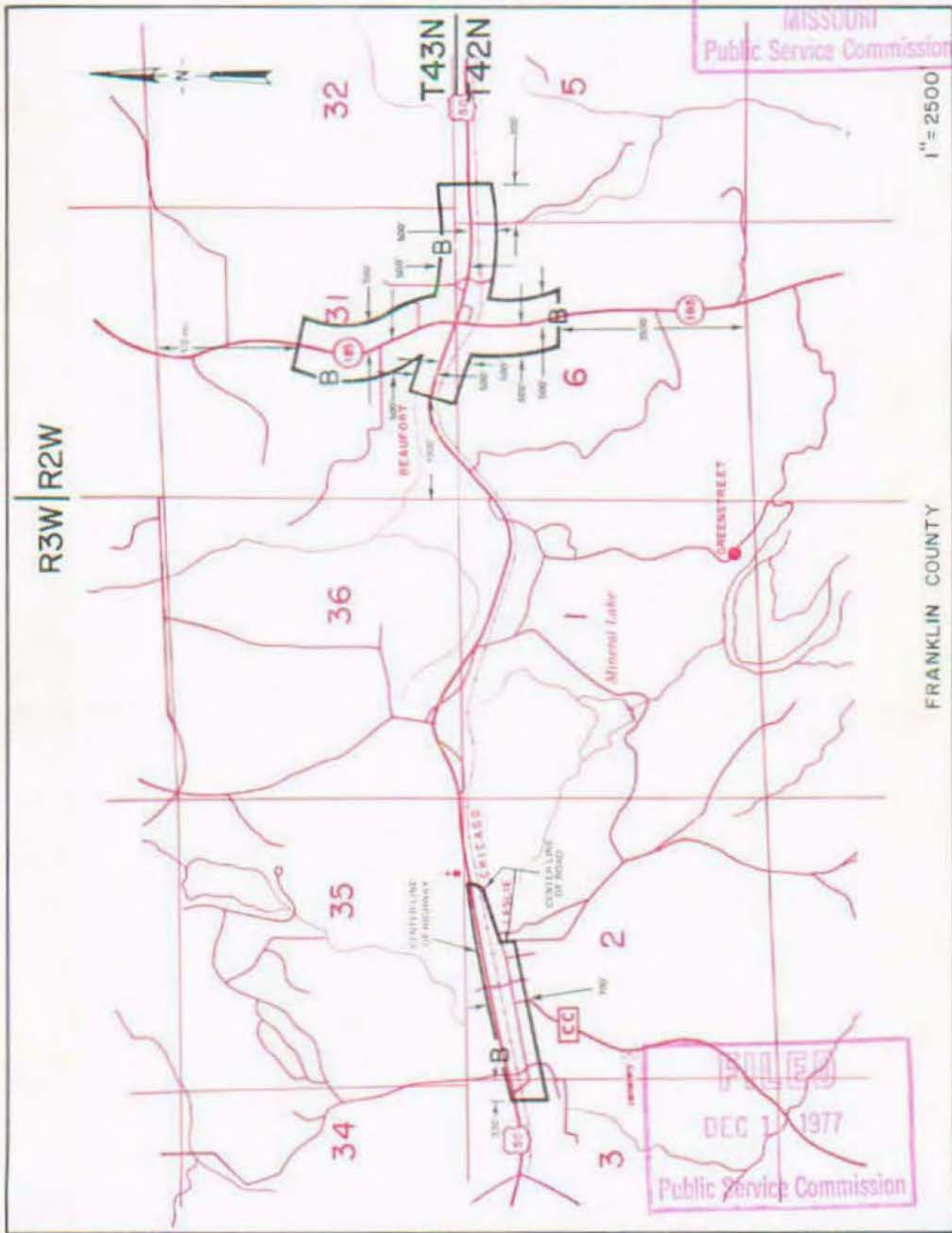
Beaufort, Missouri

OR REVISED SHEET 2,
REPLACING ORIGINAL SHEET 2

MAY 20 1977

MISSOURI
Public Service Commission

1" = 2500'



FILED
DEC 1 1977
Public Service Commission

By R. R. SHOCKLEY, Vice President, Missouri
Southwestern Bell Telephone

DEC 1 1977

NO SUPPLEMENT TO THIS TARIFF WILL BE ISSUED EXCEPT FOR THE PURPOSE OF CANCELING THIS TARIFF.

Beaufort, Missouri

P. S. C. Mo. No. 17

EXCHANGE AREA MAP REPLACING

8th Revised Sheet 3
7th Revised Sheet 3



R2W | R2W

R2W | R1W

Issued: January 30, 2006

By CINDY BRINKLEY, President-Missouri
Southwestern Bell Telephone, L.P., d/b/a AT&T Missouri
St. Louis, Missouri

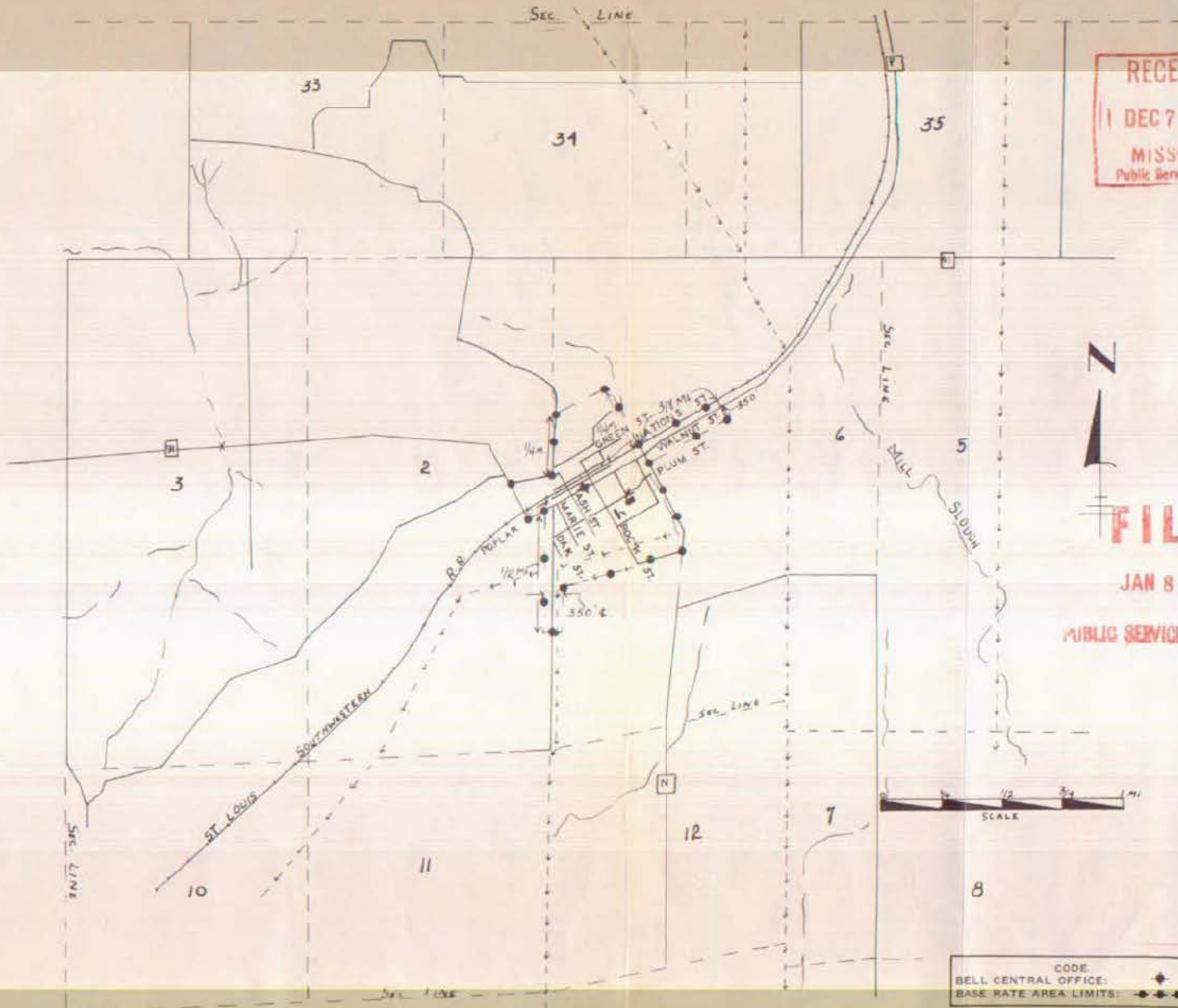
Effective: March 1, 2006

NO SUPPLEMENT TO THIS TARIFF WILL
BE ISSUED EXCEPT FOR THE PURPOSE OF
CANCELING THIS TARIFF.

P. S. C. Mo. No. 17
BASE RATE AREA MAP

Bell City, Missouri
ORIGINAL SHEET 2
REPLACING SOUTHEAST MISSOURI
TELEPHONE COMPANY P. S. C. Mo. No. 2
2nd REVISED SHEET 2

BELL CITY, MO.



RECEIVED
DEC 7 1955
MISSOURI
Public Service Comm.

FILED
JAN 8 1956
PUBLIC SERVICE COMMISSION

Issued: December 8, 1955

By J. R. PETERSON, General Manager
Southwestern Bell Telephone Company
St. Louis, Missouri

Effective: January 8, 1956

NO SUPPLEMENT TO THIS TARIFF WILL BE ISSUED EXCEPT FOR THE PURPOSE OF CANCELING THIS TARIFF.

P. S. C. Mo. No. 17
EXCHANGE AREA MAP

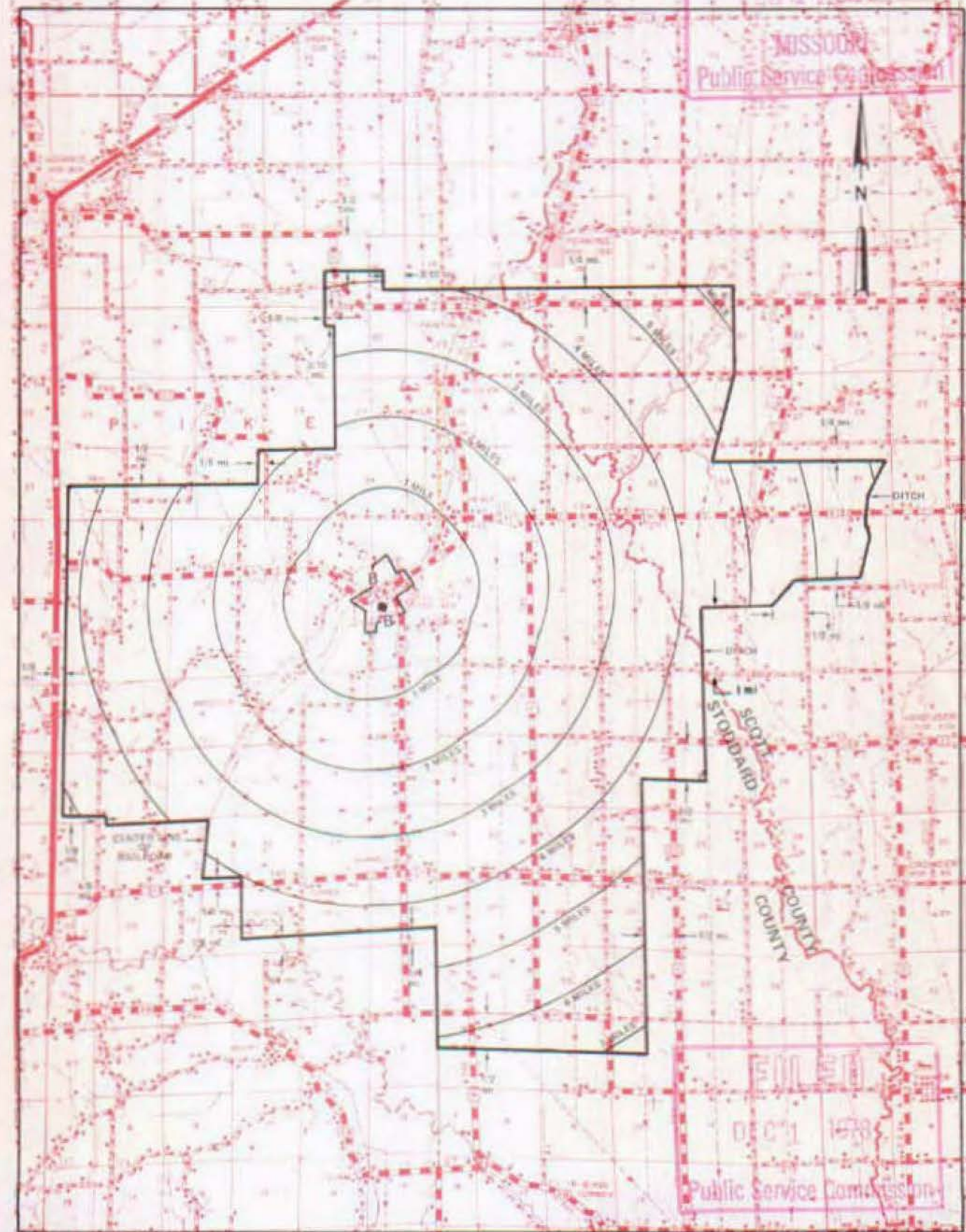
Bell City, Missouri
RECEIVED
4th REVISED SHEET 3
REPLACING 3rd REVISED SHEET 3
FEB 11 1977
MISSOURI
Public Service Commission

T29N
T28N



T28N
T27N

T27N
T26N



R9E | R10E

R10E | R11E

R11E | R12E

By R. R. SHOCKLEY, Vice President, Missouri
Southwestern Bell Telephone Company

FILED
DEC 1 1978
Public Service Commission

DEC 1 1978

SBC PSC MO #17

Benton, Missouri

Original Sheet 2

Replacing 1st Revised Sheet 1-A

Southeast Missouri Tele. Company

P.S.C. Mo. No. 2

Non-Scannable Map

(Is viewable in the Data Center
200 Madison Street, 1st Floor
Jefferson City MO)

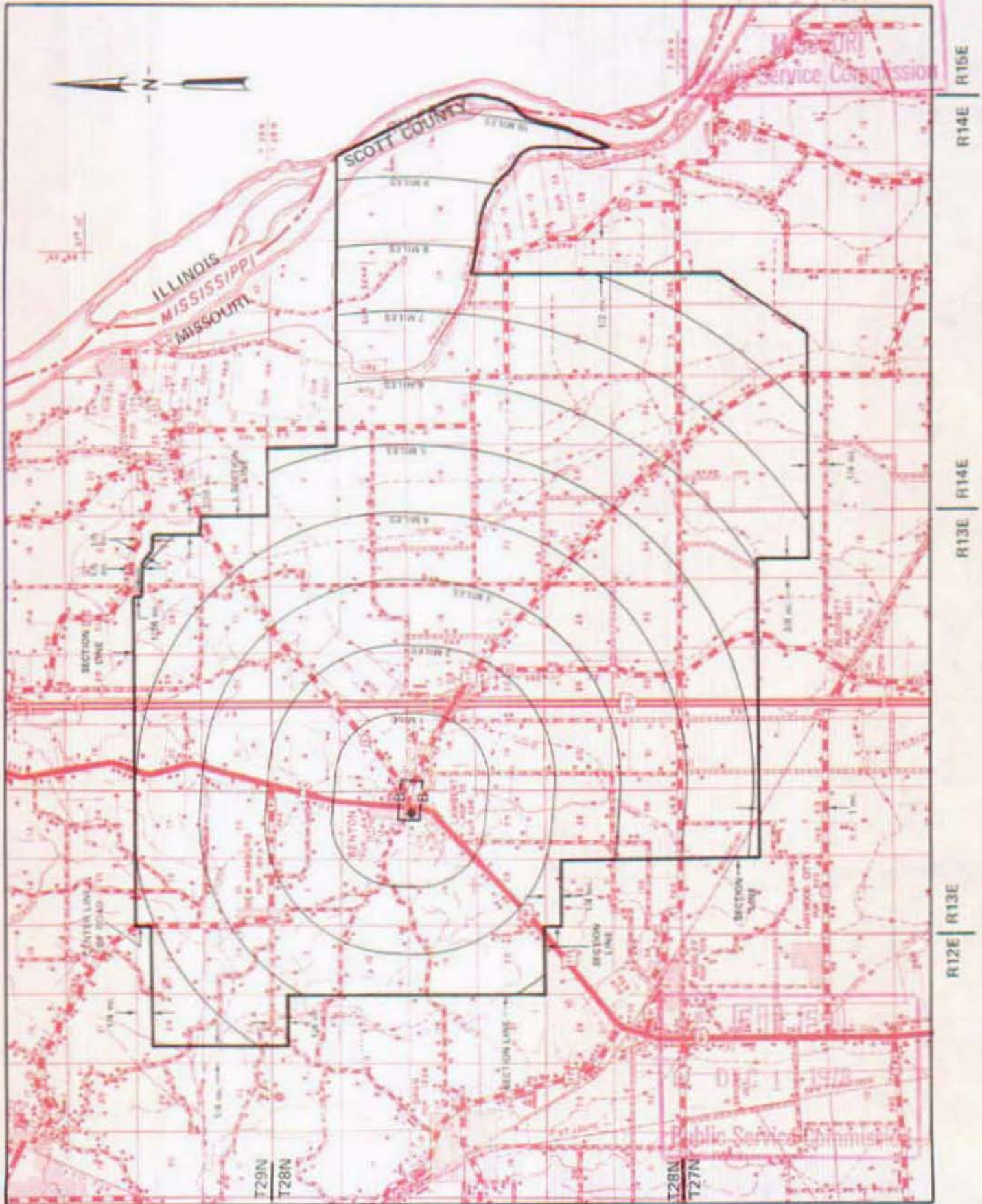
NO SUPPLEMENT TO THIS TARIFF WILL BE ISSUED EXCEPT FOR THE PURPOSE OF CANCELING THIS TARIFF.

P. S. C. Mo. No. 17 EXCHANGE AREA MAP

Benton, Missouri
REVISION
3rd REVISED SHEET 3
REPLACING 2nd REVISED SHEET 3

FEB 14 1977

MISSOURI
Public Service Commission



By R. R. SHOCKLEY, Vice President, Missouri
Southwestern Bell Telephone Company
St. Louis, Missouri

DEC 1 1978

Issued: February 15, 1977

Effective April 15, 1977

SBC PSC MO #17
Billings, Missouri
2nd Revised Sheet 2
Replacing 1st Revised Sheet 2

Non-Scannable Map

(Is viewable in the Data Center
200 Madison Street, 1st Floor
Jefferson City MO)

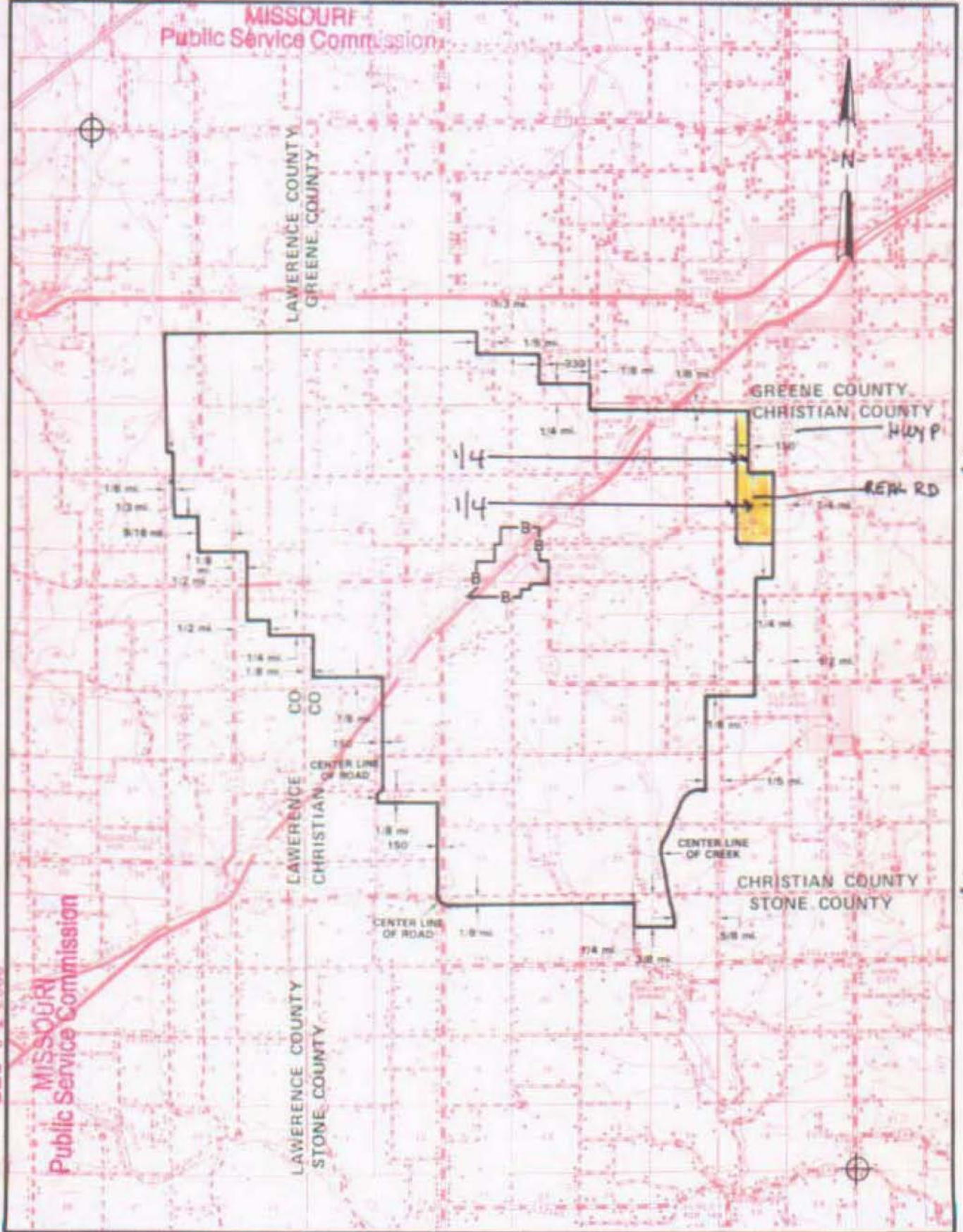
RECEIVED

Billings, Missouri

NO SUPPLEMENT TO THIS TARIFF WILL BE ISSUED EXCEPT FOR THE PURPOSE OF CANCELING THIS TARIFF.

P. S. C. Mo. No. 17 EXCHANGE AREA MAP

3rd REVISED SHEET 3 REPLACING 2nd REVISED SHEET 3



FILED
DEC 04 2000

MISSOURI Public Service Commission

R25W | R24W | R23W
B24W
PAN NEWTON

November 3, 2000

By R. D. BARRON, PRESIDENT, MISSOURI DIVISION
Southwestern Bell Telephone Company
St. Louis, Missouri

December 4, 2000

Issued: February 19, 1991

Effective: March 25, 1991

SBC PSC MO #17
Bismarck, Missouri
1st Revised Sheet 2
Replacing Original Sheet 2

Non-Scannable Map

(Is viewable in the Data Center
200 Madison Street, 1st Floor
Jefferson City MO)

NO SUPPLEMENT TO THIS TARIFF WILL BE ISSUED EXCEPT FOR THE PURPOSE OF CANCELING THIS TARIFF.

P. S. C. Mo. No. 17

Bismarck, Missouri

EXCHANGE AREA MAP

7th REVISED SHEET 3
REPLACING 7th REVISED SHEET 3

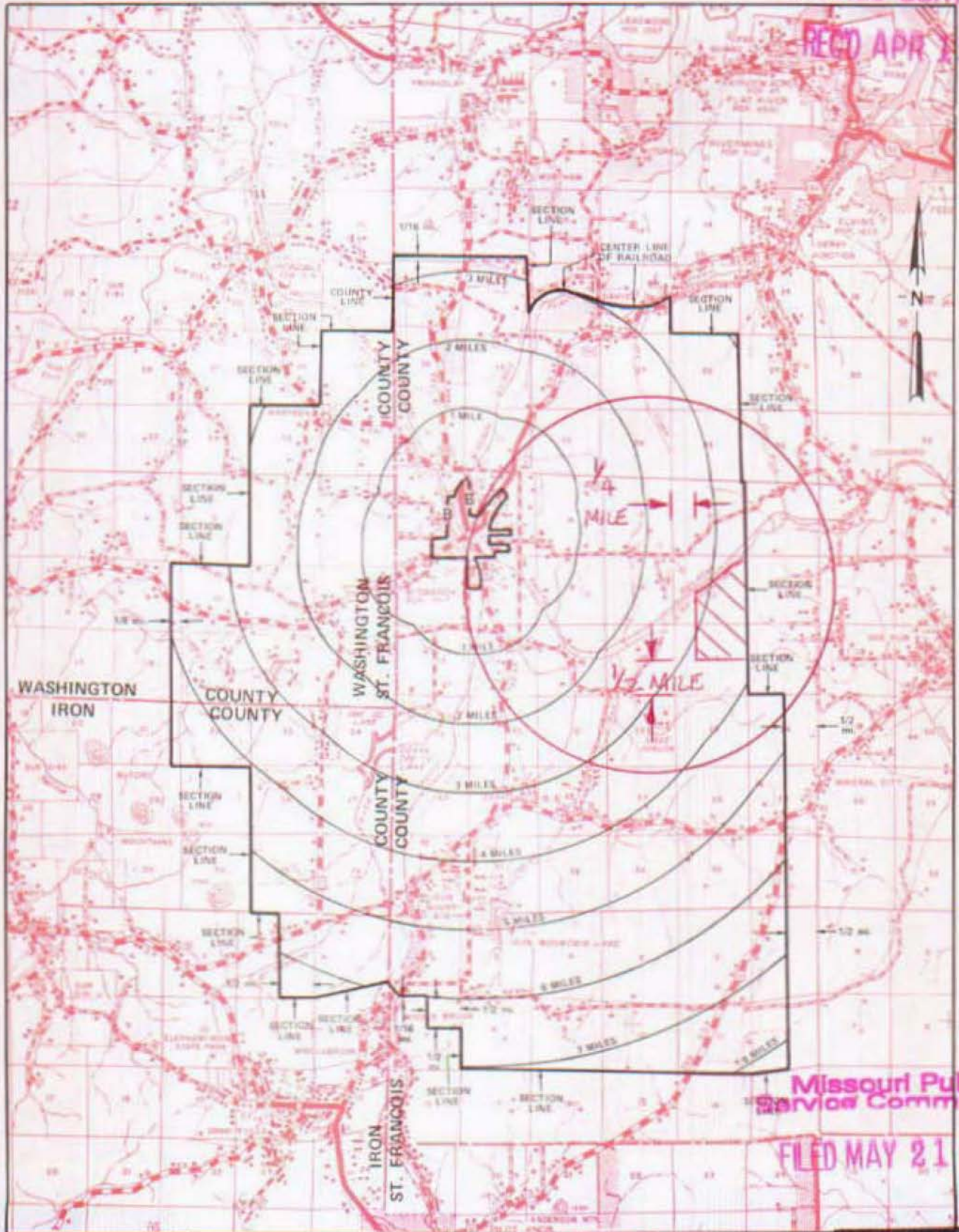
Missouri Public Service Commission

REC'D APR 19 1999

T37N

T36N

1999



T36N

T35N

T35N

T34N

Missouri Public Service Commission

FILED MAY 21 1999

APR 19 1999

R3E | R4E *Priscilla Hill-Ardoin*
By R. R. SHOCKLEY, Vice President, Missouri
Southwestern Bell Telephone Company

R4E | R5E MAY 19 1999

EFFECTIVE JUL 1 MAY 21 1999

May 10, 1977

SBC PSC MO #17
Bloomfield, Missouri
Original Sheet 2
Replacing 1st Revised Sheet 1-A

Non-Scannable Map

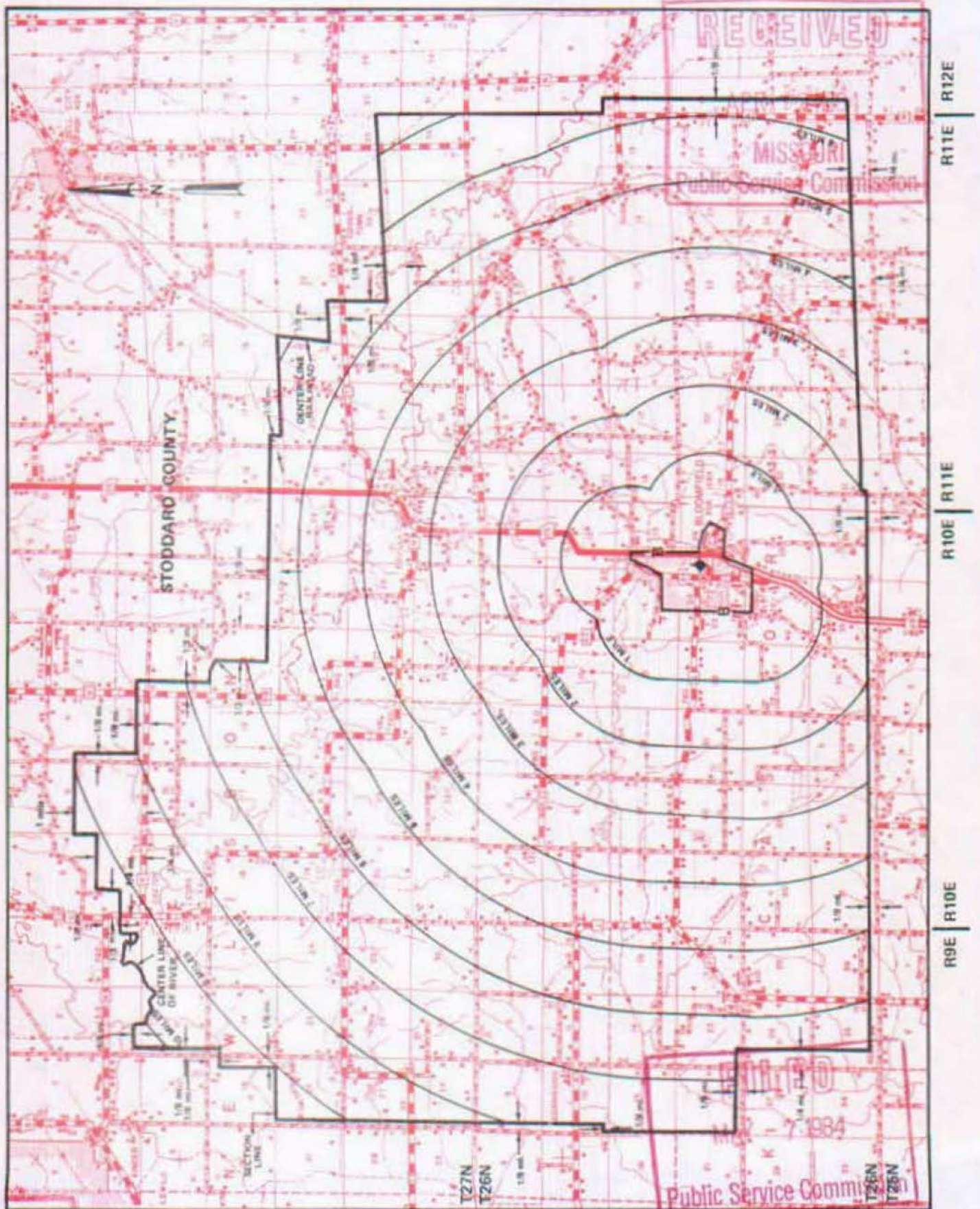
(Is viewable in the Data Center
200 Madison Street, 1st Floor
Jefferson City MO)

NO SUPPLEMENT TO THIS TARIFF WILL BE ISSUED EXCEPT FOR THE PURPOSE OF CANCELING THIS TARIFF.

P. S. C. Mo. No. 17 EXCHANGE AREA MAP

Bloomfield, Missouri

8th REVISED SHEET 3
REPLACING 7th REVISED SHEET 3



By R. D. BARRON, President, Missouri DIVISION
Southwestern Bell Telephone Company

NO SUPPLEMENT TO THIS TARIFF WILL BE ISSUED EXCEPT FOR THE PURPOSE OF CANCELING THIS TARIFF.

Missouri Portion - Blytheville, Arkansas

P. S. C. Mo. No. 17 EXCHANGE AREA MAP

RECEIVED
10th REVISED SHEET 2
REPLACING 9th REVISED SHEET 2
SEP 25 1978
MISSOURI
Public Service Commission



R11E R12E
R10E R11E

FILED
APR 1 - 1979
Public Service Commission

T17N
T16N

By R. R. SHOCKLEY, Vice President, Missouri
Southwestern Bell Telephone Company

APR 1 - 1979

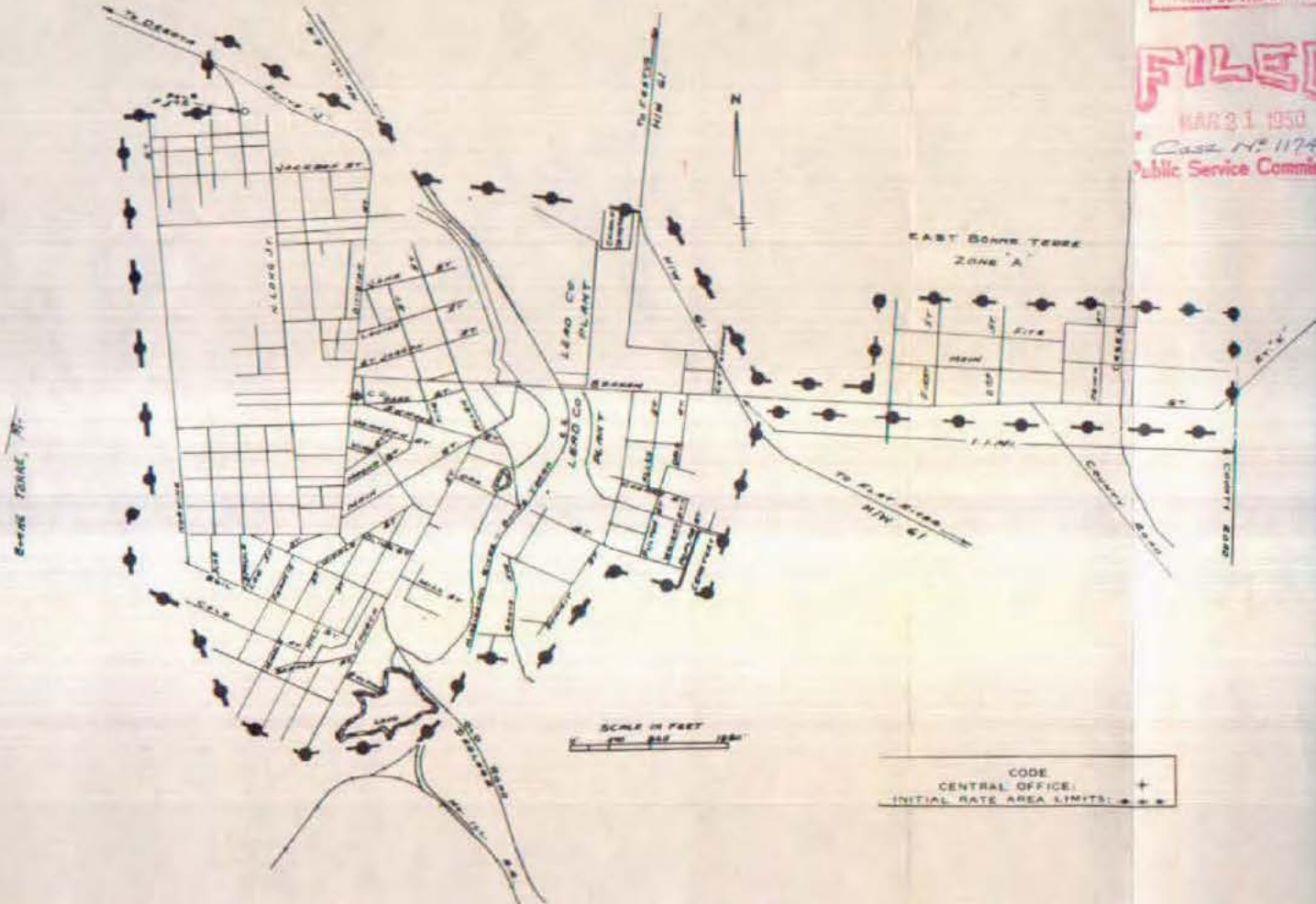
NO SUPPLEMENT TO THIS TARIFF WILL
BE ISSUED EXCEPT FOR THE PURPOSE OF
CANCELING THIS TARIFF.

Bonne Terre, Mo.
FIRST REVISED SHEET 1-A
REPLACING ORIGINAL SHEET 1-A

P. S. C. Mo. No. 2
SOUTHEAST MISSOURI TELEPHONE COMPANY
INITIAL RATE AREA MAP

RECEIVED
MAR 21 1950
MISSOURI
Public Service Comm.

FILED
MAR 21 1950
Case No. 11742
Public Service Commission



SCALE IN FEET
0 50 100

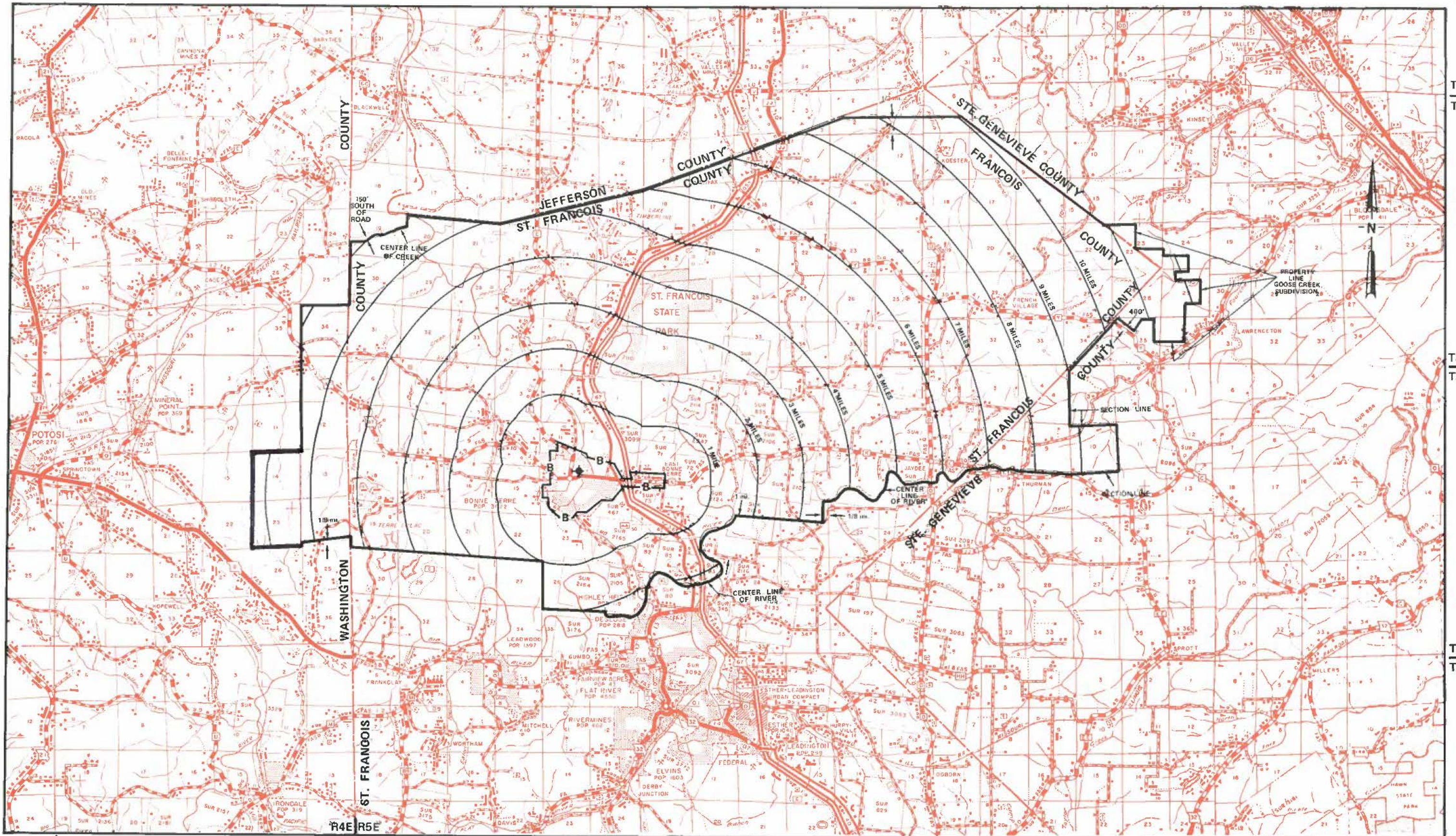
CODE
CENTRAL OFFICE: +
INITIAL RATE AREA LIMITS: - - -

Issued: March 20, 1950

By C. W. BOUTIN, President and General Manager
Cape Girardeau, Mo.

Effective: March 21, 1950

P. S. C. Mo. No. 17
EXCHANGE AREA MAP

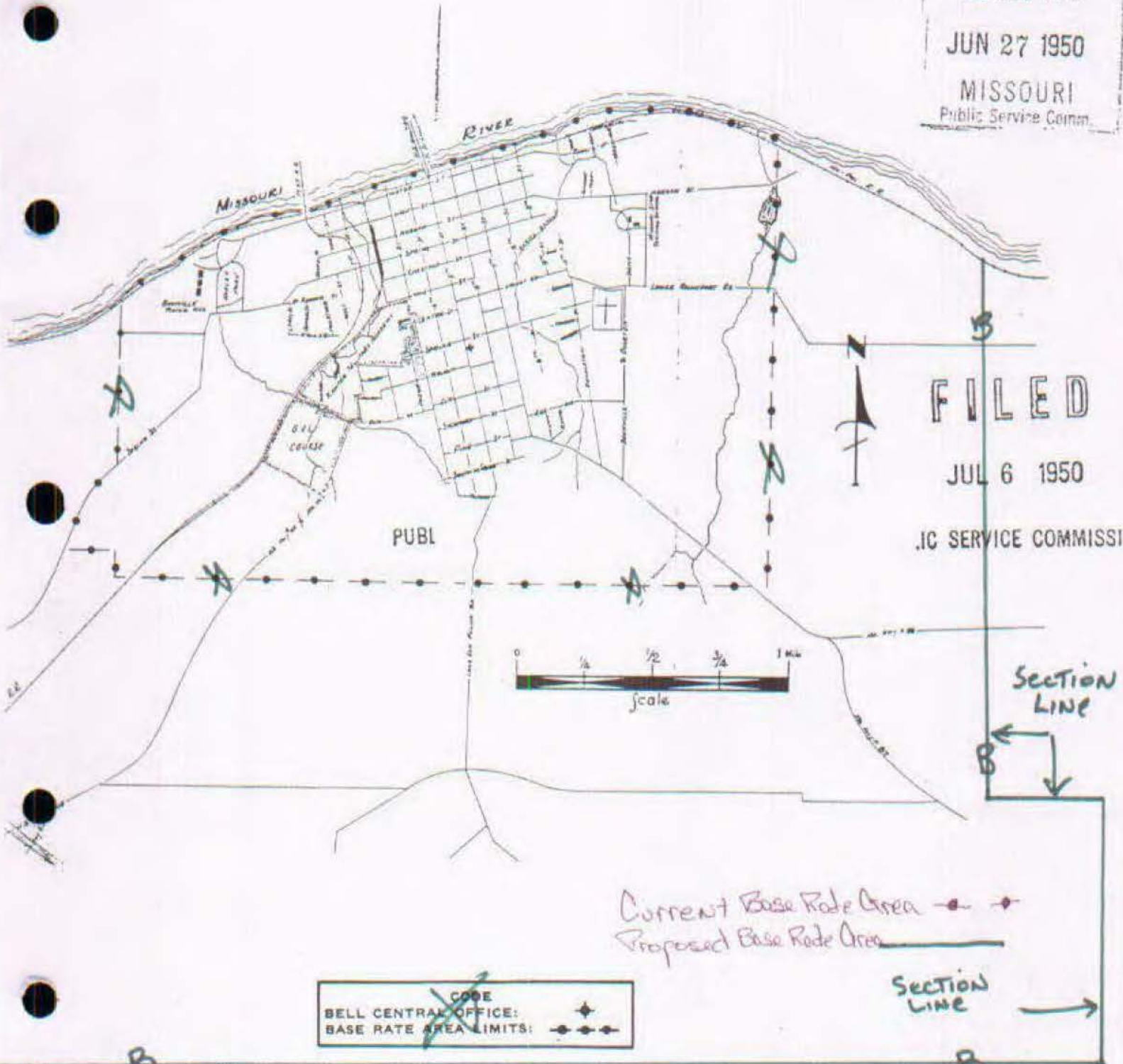


THIS TARIFF WILL
BE FOR THE PURPOSE OF
P.P.

2nd Boonville, Missouri
FIRST REVISED SHEET 2
REPLACING ORIGINAL SHEET 2
1st Revised

P. S. C.-Mo. No. 17
BASE RATE AREA MAP

RECEIVED
JUN 27 1950
MISSOURI
Public Service Comm.



FILED
JUL 6 1950
PUBLIC SERVICE COMMISSION

SEP 12 1998

Priscilla Hill-Arbin, President-Missouri
By H. R. TOWLES, General Manager
Southwestern Bell Telephone Company
St. Louis, Missouri

Effective: July 6, 1950
~~SEP 26 1998~~
OCT 12 1998

NO SUPPLEMENT TO THIS TARIFF WILL BE ISSUED EXCEPT FOR THE PURPOSE OF CANCELING THIS TARIFF.

P. S. C. Mo. No. 17
EXCHANGE AREA MAP

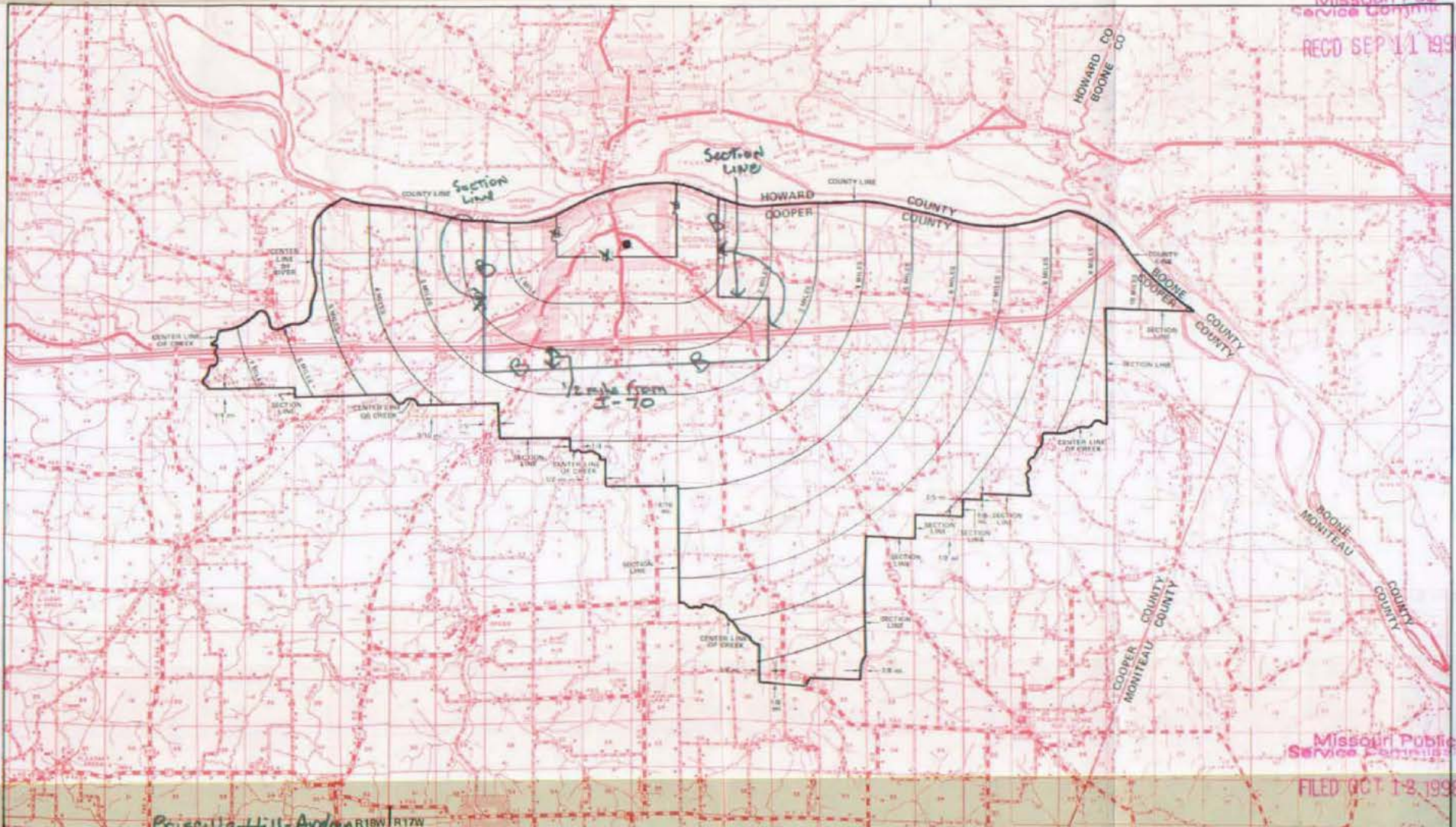
Current Base Rate Area — B —
Proposed Base Rate Area — B —

Boonville, Missouri

REPLACING REVISED SHEET 3
REPLACING REVISED SHEET 3

Missouri Public Service Commission

RECD SEP 11 1998



T49N
T48N

T49N
T47N

Missouri Public Service Commission

FILED OCT 12 1998

SEP 12 1998 R19W | R18W
By Priscilla Hill Avdan
Issued: August 26, 1997

By Priscilla Hill Avdan
Southwestern Bell Telephone Company
St. Louis, Missouri

R17W | R16W

R18W | R15W

R15W | R14W

SEP 12 1998
DEC 01 1998

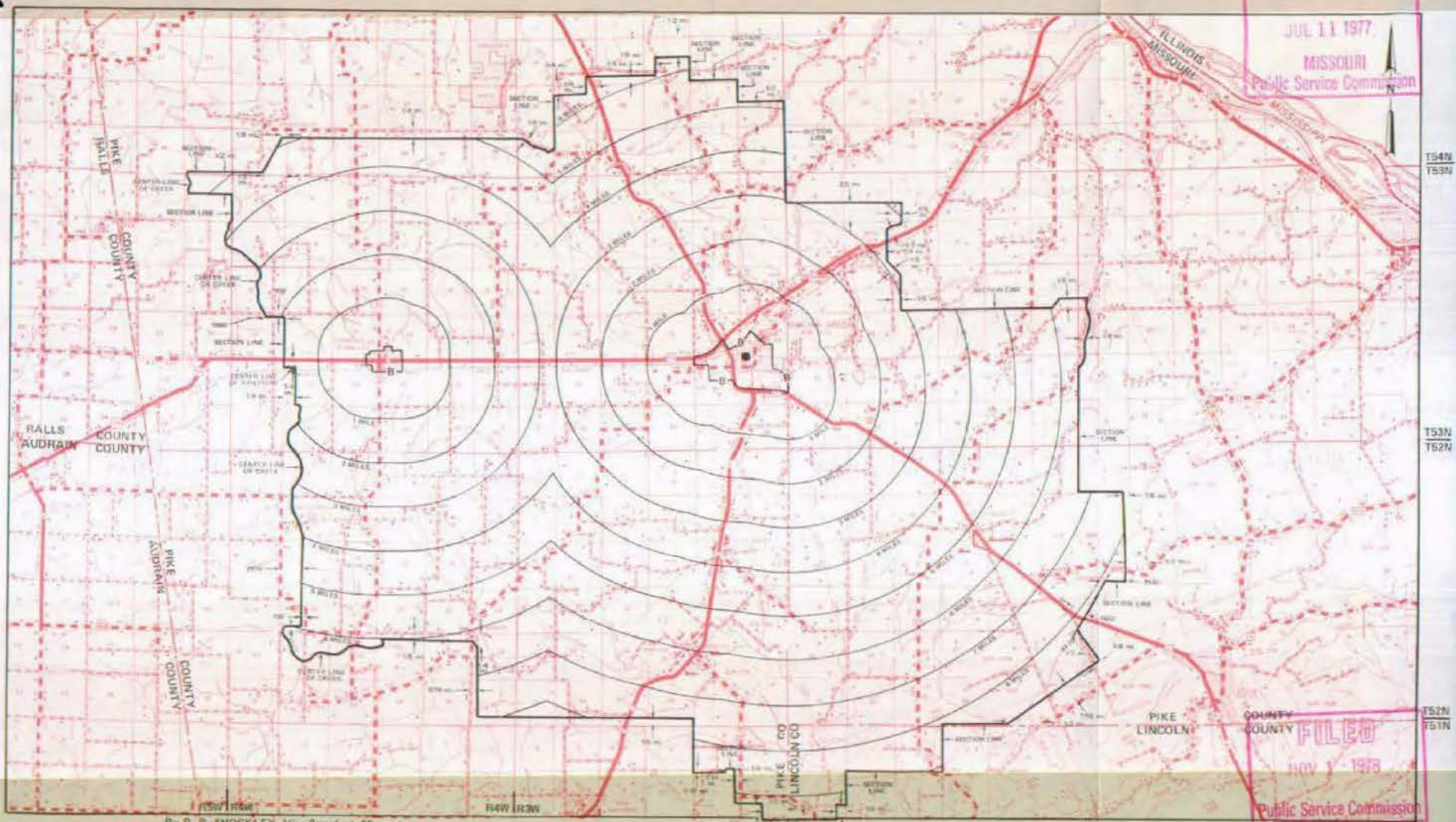
Effective: _____

NO SUPPLEMENT TO THIS TARIFF WILL BE ISSUED EXCEPT FOR THE PURPOSE OF CANCELING THIS TARIFF.

P. S. C. Mo. No. 17
EXCHANGE AREA MAP

Bowling Green, Missouri

RECEIVED
JUL 11 1977
MISSOURI
Public Service Commission



By R. R. SHOCKLEY, Vice President, Missouri
Southwestern Bell Telephone Company
St. Louis, Missouri

Issued: July 11, 1977

FILED
NOV 1 1978
Public Service Commission

Effective: NOV 1 - 1978

SBC PSC MO #17
Brookfield, Missouri
2nd Revised Sheet 2
Replacing 1st Sheet 2

Non-Scannable Map

(Is viewable in the Data Center
200 Madison Street, 1st Floor
Jefferson City MO)

NO SUPPLEMENT TO THIS TARIFF WILL BE ISSUED EXCEPT FOR THE PURPOSE OF CANCELING THIS TARIFF.

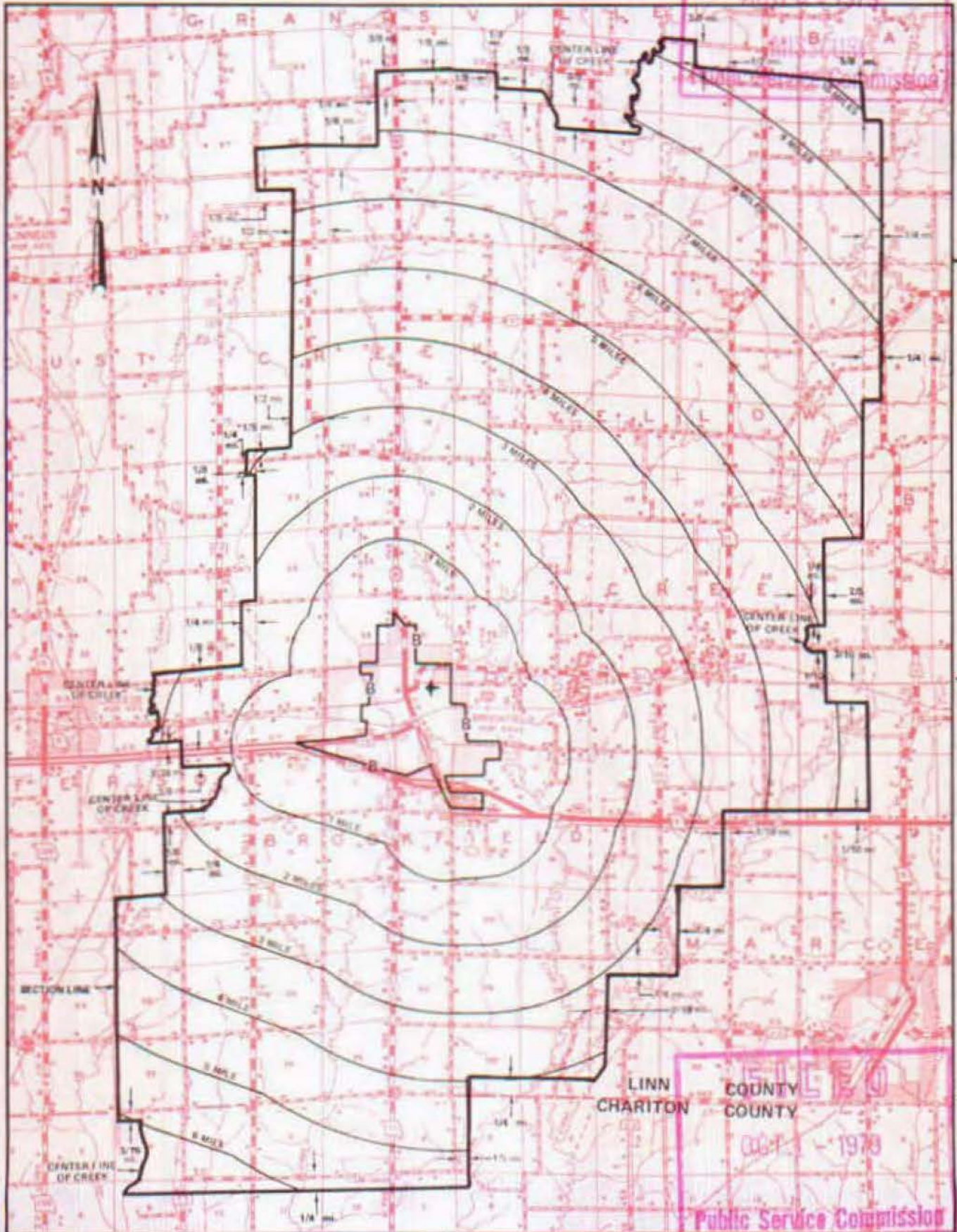
P. S. C. Mo. No. 17

EXCHANGE AREA MAP

Brookfield, Missouri

RECEIVED
16th REVISED SHEET 3
REPLACING 14th REVISED SHEET 3

AUG 24 1979



T59N
T58N

T58N
T57N

T57N
T56N

R20W | R19W

R19W | R18W

By R. R. SHOCKLEY, Vice President, Missouri
Southwestern Bell Telephone Company

OCT 1 1979