

SBC PSC MO #17  
Fayette, Missouri  
1<sup>st</sup> Revised Sheet 2  
Replacing Original Sheet 2

# Non-Scannable Map

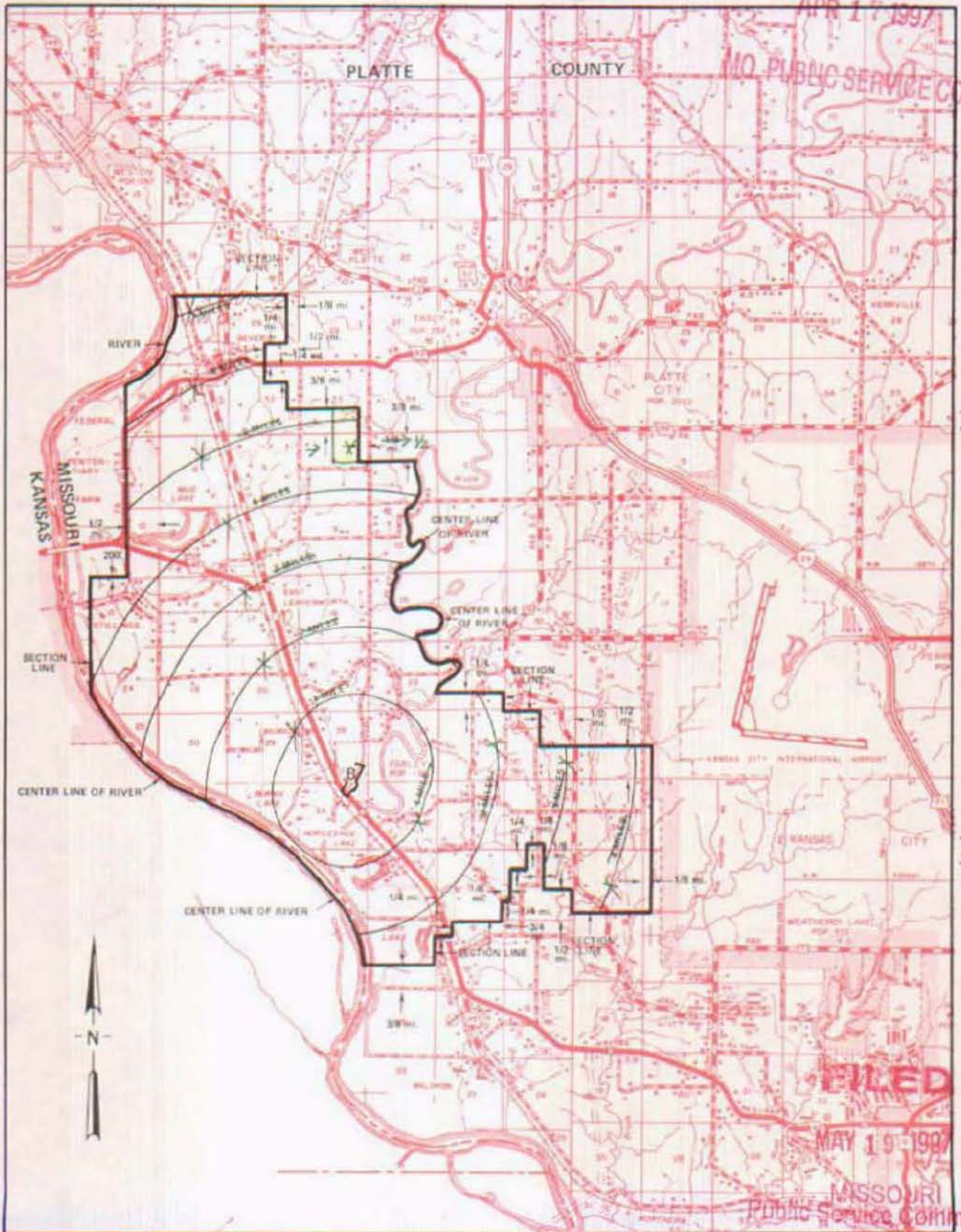
(Is viewable in the Data Center  
200 Madison Street, 1<sup>st</sup> Floor  
Jefferson City MO)

NO SUPPLEMENT TO THIS TARIFF WILL BE ISSUED EXCEPT FOR THE PURPOSE OF CANCELING THIS TARIFF.

P. S. C. Mo. No. 17  
EXCHANGE AREA MAP

REPLACING ~~REVISED SHEET 3~~  
~~REVISED SHEET 3~~

7 Farley, Missouri  
6  
APR 17 1997  
MO. PUBLIC SERVICE COMM



T53N  
T52N

T52N  
T51N

FILED

MAY 19 1997

MISSOURI  
Public Service Commission

R36W | R35W  
APR 16 1997

By *Karen Jennings*, R35W | R34W  
By R. R. SHOCKLEY, Vice President, Missouri  
Southwestern Bell Telephone Company  
St. Louis Missouri

MAY 19 1997

Issued: *March 1, 1972*

Effective: *3/1/77*

NO SUPPLEMENT TO THIS TARIFF WILL BE ISSUED EXCEPT FOR THE PURPOSE OF CANCELING THIS TARIFF.

Farley, Missouri

ORIGINAL SHEET 2

REPLACING FARLEY TELEPHONE COMPANY

P. S. C. Mo. No. 2

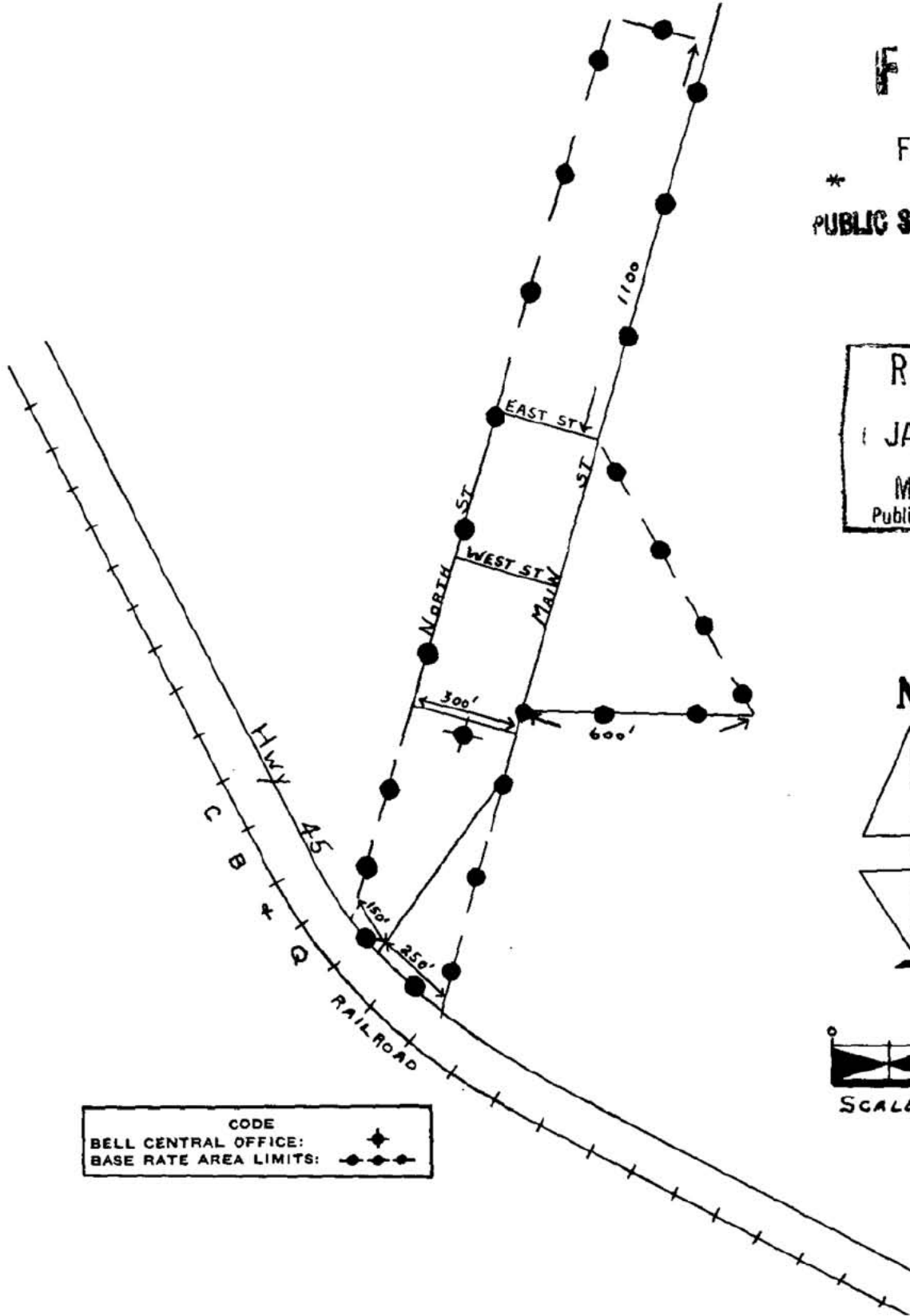
# P. S. C. Mo. No. 17 BASE RATE AREA MAP

# FILED

FEB-1-1955

\*  
**PUBLIC SERVICE COMMISSION**

RECEIVED  
JAN 25 1955  
MISSOURI  
Public Service Comm.



FARLEY Mo

CODE
BELL CENTRAL OFFICE: 
BASE RATE AREA LIMITS: 

Issued under Order of the Public Service Commission in Case No. 12805.

Issued: January 27, 1955

Effective: February 1, 1955

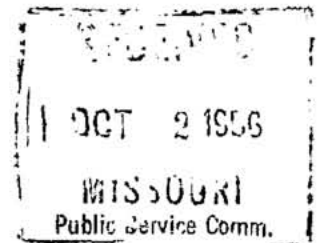
By J. R. PETERSON, General Manager  
Southwestern Bell Telephone Company  
St. Louis, Missouri

NO SUPPLEMENT TO THIS TARIFF WILL  
BE ISSUED EXCEPT FOR THE PURPOSE  
OF CANCELING THIS TARIFF.

P. S. C. Mo.-No. 17

**FARLEY, MISSOURI**  
1st REVISED SHEET 4  
(CANCELING ORIGINAL SHEET 4)

This sheet is canceled. For local and general exchange rates applicable to Farley, please refer to the Local Exchange Tariff Sheet 1 and 1-B, and the General Exchange Tariff.



NOV 4 1956

MISSOURI PUBLIC SERVICE COMMISSION

---

Issued: October 4, 1956

Effective: November 4, 1956

By J. R. PETERSON, General Manager  
Southwestern Bell Telephone Co.  
St. Louis, Missouri



SBC PSC MO #17  
Farmington, Missouri  
2<sup>nd</sup> Revised Sheet 2  
Replacing 1<sup>st</sup> Revised Sheet 2

# Non-Scannable Map

(Is viewable in the Data Center  
200 Madison Street, 1<sup>st</sup> Floor  
Jefferson City MO)

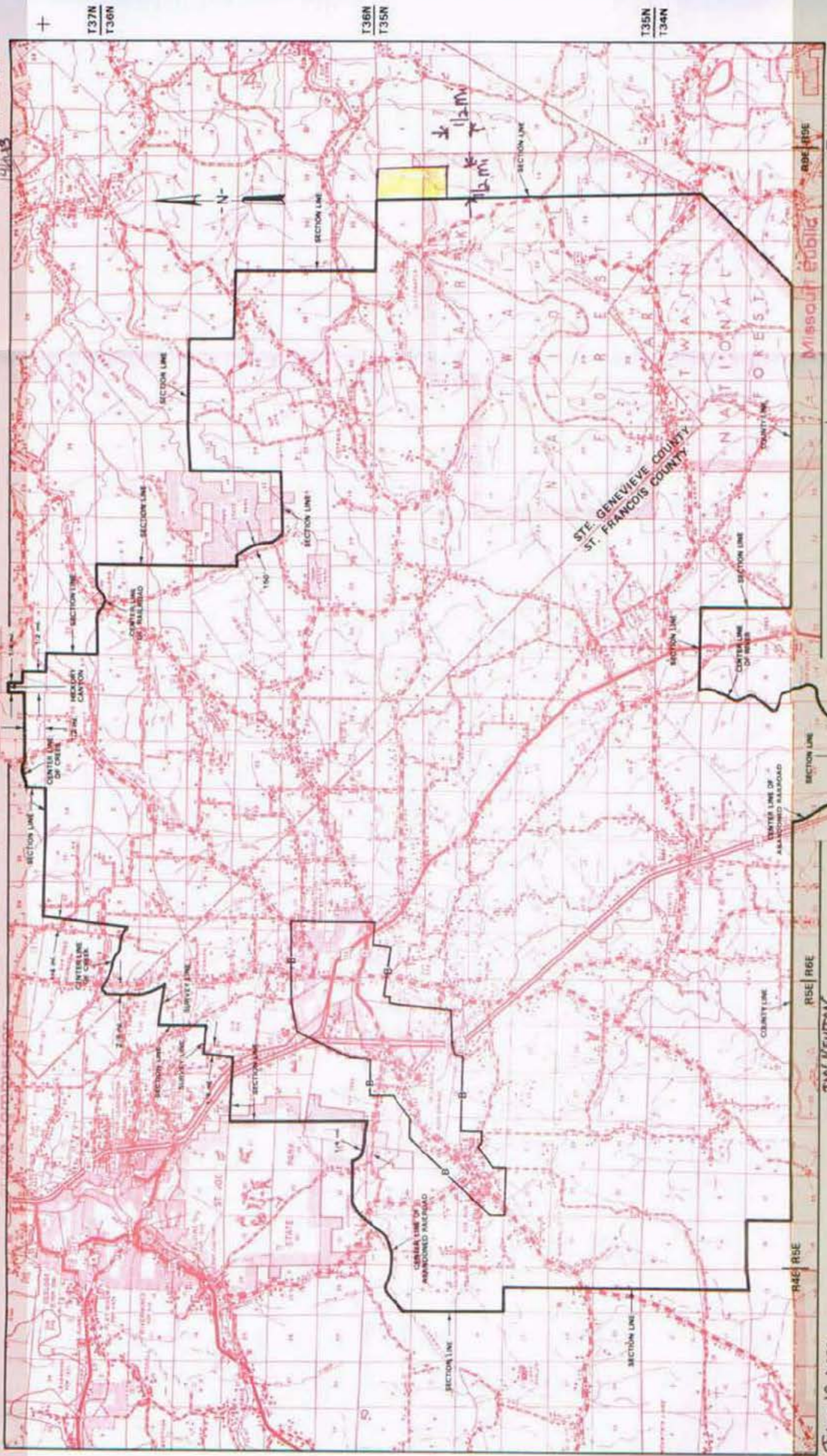
NO SUPPLEMENT TO THIS TARIFF WILL BE ISSUED EXCEPT FOR THE PURPOSE OF CANCELING THIS TARIFF.

Missouri Public

REC'D JUN 1 0 2002

### P. S. C. Mo. No. 17 EXCHANGE AREA MAP

Farmington, Missouri  
15th REVISED SHEET 3  
REPLACING 12th REVISED SHEET 3  
12/1/93



June 10, 2002  
MAY 01 1992  
Issued:

JAN NEWTON  
By: R. BARRON, President - Missouri Division  
Southwestern Bell Telephone Company, L.P., a BellSouth Company  
St. Louis, Missouri

Missouri Telephone Company

R7E R8E  
FILED JUL 1 0 2002

July 10, 2002  
JUN 01 1992  
Effective:

See Service Commission

No supplement to this  
tariff will be issued  
except for the purpose  
of canceling this tariff

FAIR GROVE, MISSOURI  
3rd Revised Sheet 2  
Replacing 2nd Revised Sheet 2

BASE RATE AREA MAP

THIS AREA IS INCLUDED IN THE SPRINGFIELD METROPOLITAN EXCHANGE.

RECEIVED

MAY 25 1993

MO. PUBLIC SERVICE COMM.

FILED

JUL 07 1993  
92-306

MO. PUBLIC SERVICE COMM.

Issued: MAY 25 1993

Effective: JUL 07 1993

By A. D. ROBERTSON, Assistant Vice President-External Affairs  
Southwestern Bell Telephone Company  
St. Louis, Missouri



NO SUPPLEMENT TO THIS TARIFF WILL BE ISSUED EXCEPT FOR THE PURPOSE OF CANCELING THIS TARIFF.

P. S. C. Mo. No. 17

Springfield Metropolitan Exchange

Fair Grove, Missouri

FAIR GROVE ZONE

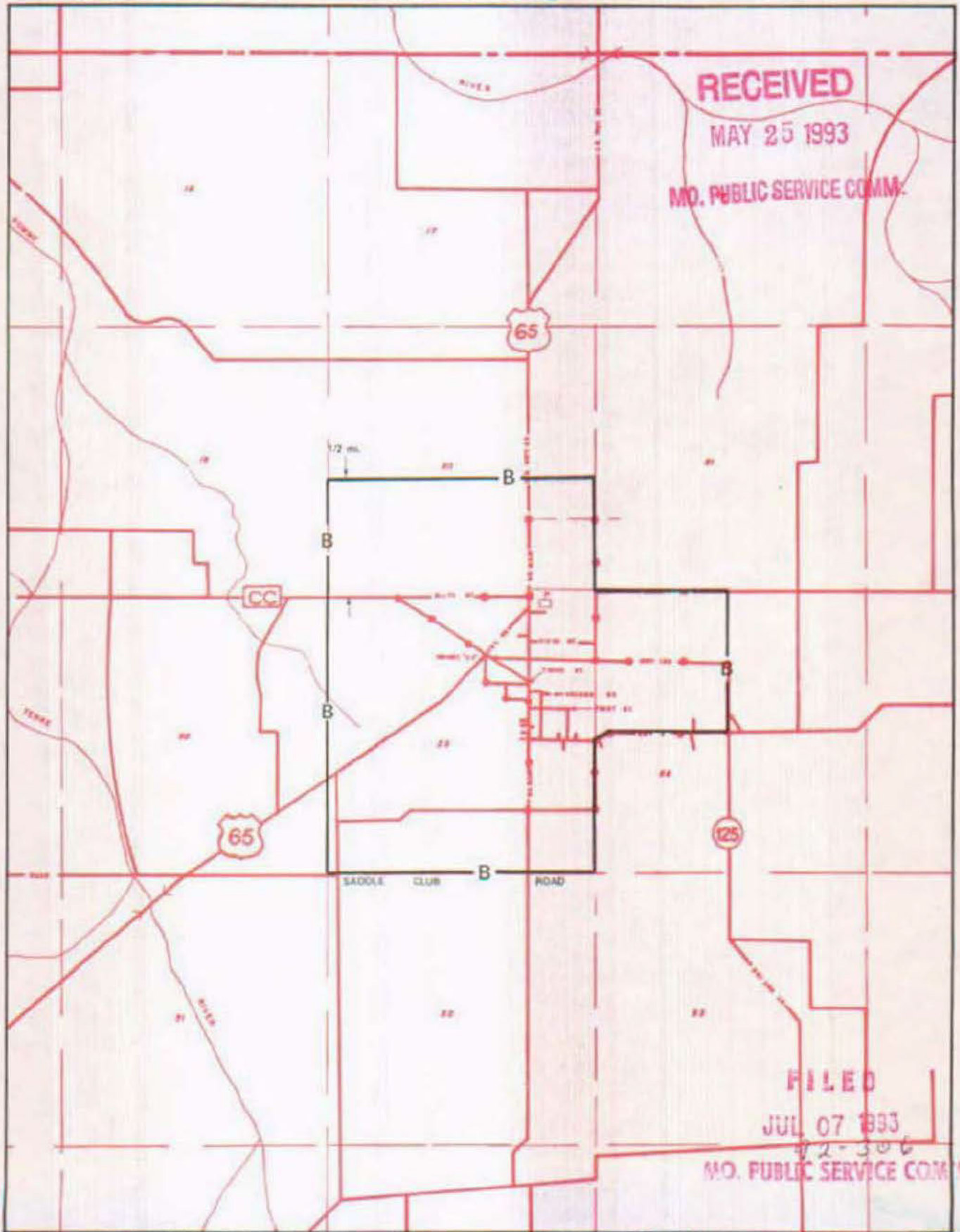
2nd REVISED SHEET 2

REPLACING 1st REVISED SHEET 2

Original Sheet 2-A

BASE RATE AREA MAP

— DENOTES PROPOSED REVISIONS



By A.D. ROBERTSON, Assistant Vice President - External Affairs

By R.D. BARRON, Vice President, Missouri Southwestern Bell Telephone Company

MAY 25, 1993

JULY 7, 1993

Issued: MARCH 17, 1993

APRIL 21, 1993



NO SUPPLEMENT TO THIS TARIFF WILL BE ISSUED EXCEPT FOR THE PURPOSE OF CANCELING THIS TARIFF.

Springfield Metropolitan Exchange

Fair Grove, Missouri

**FAIR GROVE ZONE**

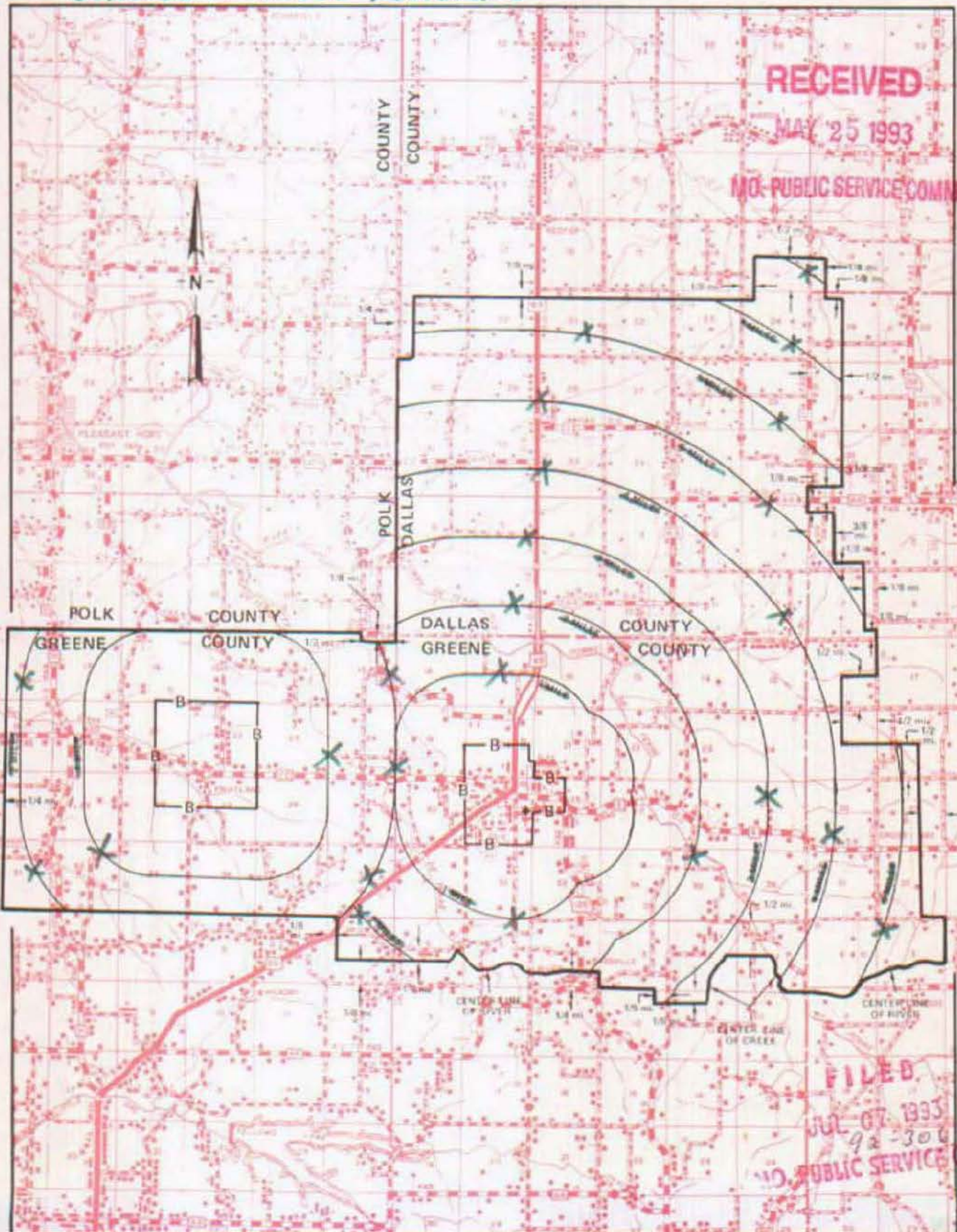
~~UNREVISED SHEET~~

~~REPLACING SIX REVISED SHEETS~~

Original Sheet 2-B

P. S. C. Mo. No. 17  
**EXCHANGE AREA MAP**

**— DENOTES PROPOSED REVISIONS**



T33N  
T32N

T32N  
T31N

T31N  
T30N

By **A. D. ROBERTSON,**

R21W | R20W Assistant Vice President | R20W | R19W

By **R. D. BARRON,** Vice President, Missouri  
Southwestern Bell Telephone Company

**External Affairs**

**MAY 25, 1993**

**JULY 7, 1993**

Issued: **MARCH 17, 1983**

APRIL 21, 1993



NO SUPPLEMENT TO THIS TARIFF WILL BE ISSUED EXCEPT FOR THE PURPOSE OF CANCELING THIS TARIFF.

P. S. C. Mo. No. 17  
**EXCHANGE AREA MAP**

Fair Grove, Missouri

REPLACING 9th REVISED SHEET 3  
8th REVISED SHEET 3

**RECEIVED**  
MAR 14 1983  
MISSOURI  
Public Service Commission

T33N  
T32N

**CANCELLED**

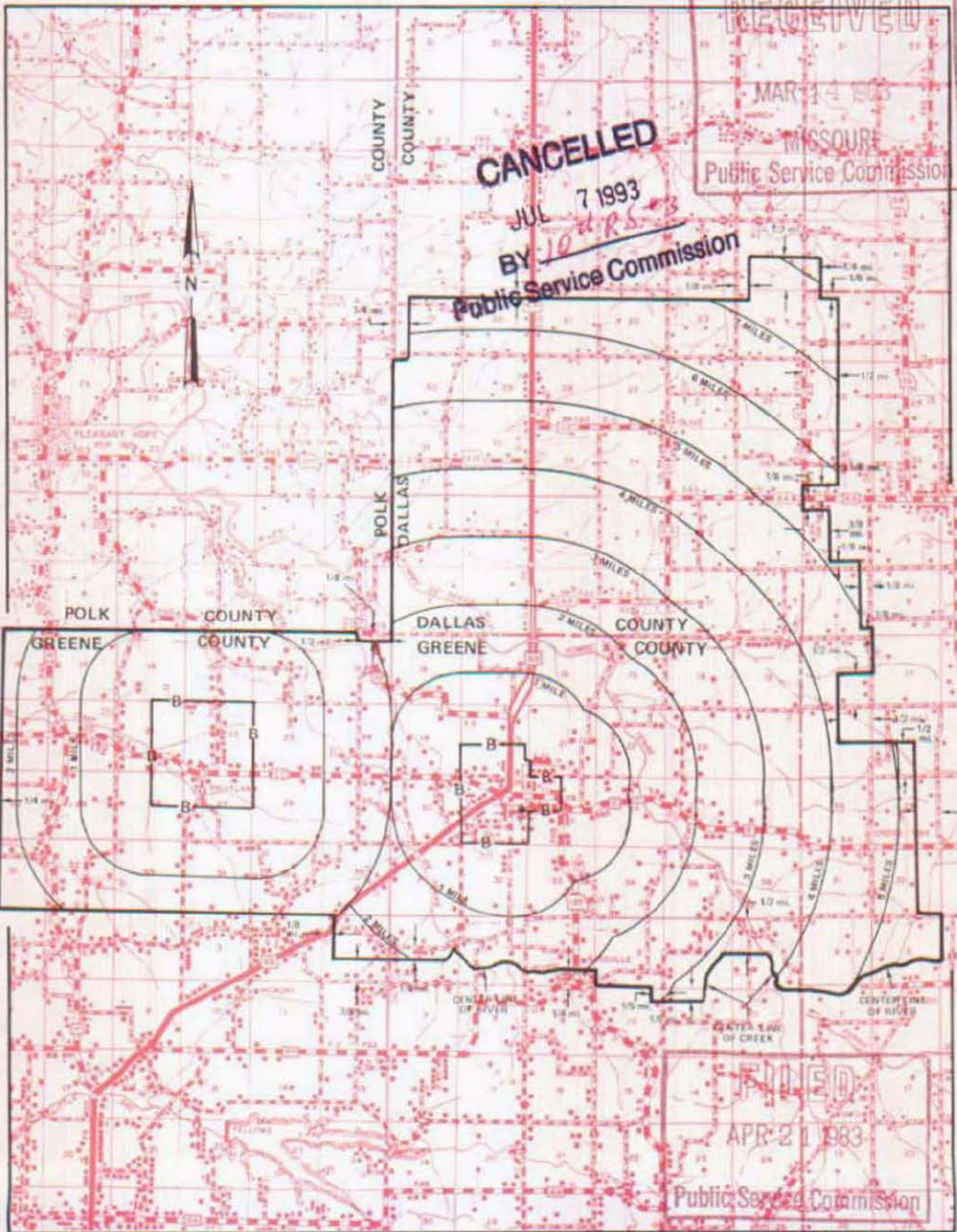
JUL 7 1993  
BY 104 RS-3

Public Service Commission

T32N  
T31N

T31N  
T30N

**FILED**  
APR 21 1983  
Public Service Commission



R21W | R20W

R20W | R19W

By R. D. BARRON, Vice President, Missouri  
Southwestern Bell Telephone Company

No supplement to this  
tariff will be issued  
except for the purpose  
of canceling this tariff

FAIR GROVE, MISSOURI  
10th Revised Sheet 3  
Replacing 9th Revised Sheet 3

EXCHANGE AREA MAP

RECEIVED

THIS AREA IS INCLUDED IN THE SPRINGFIELD METROPOLITAN EXCHANGE.

MAY 25 1993

MO. PUBLIC SERVICE COMM.

FILED

JUL 07 1993

92-306

MO. PUBLIC SERVICE COMM.

Issued: MAY 25 1993

Effective: JUL 07 1993

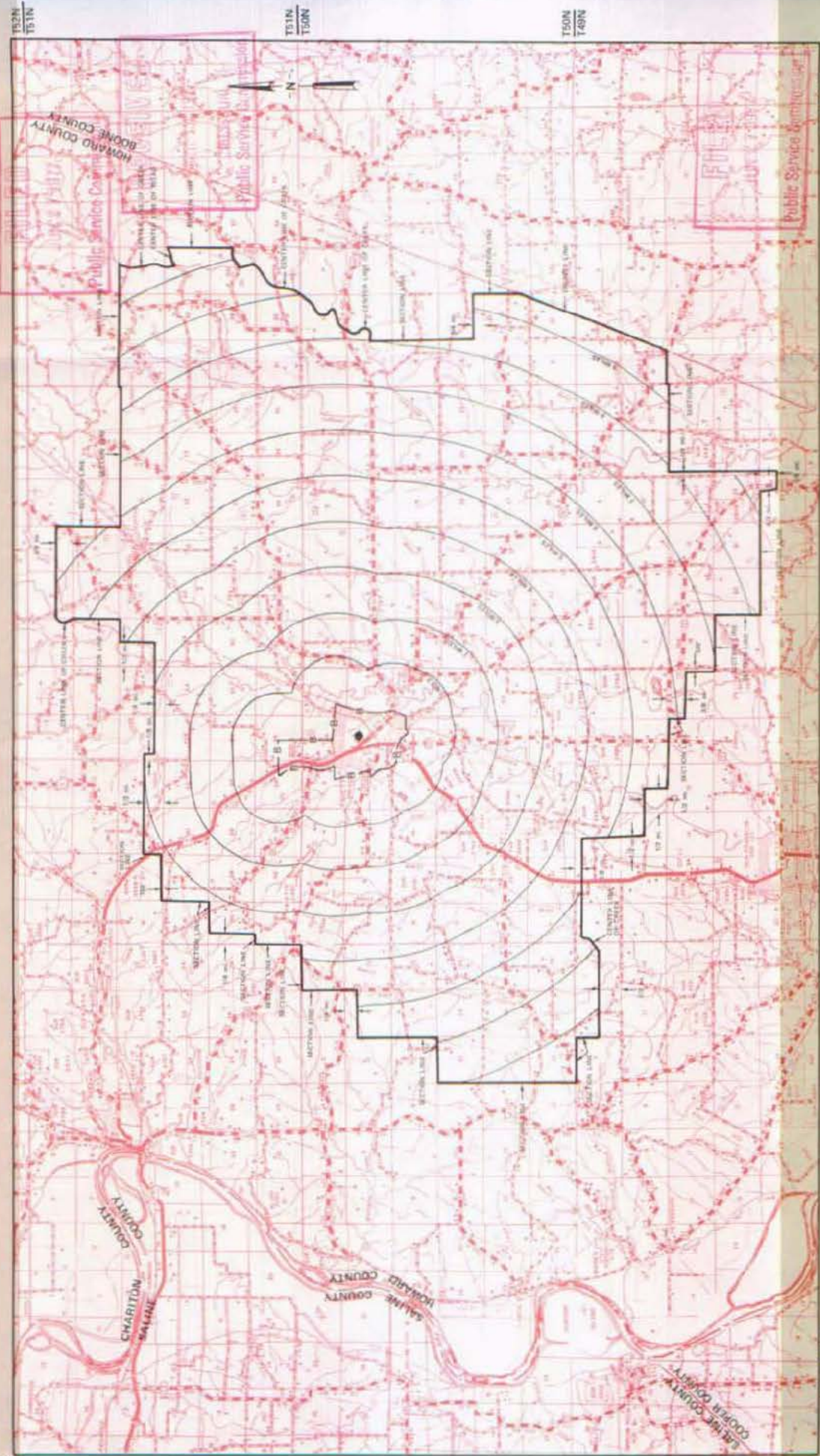
By A. D. ROBERTSON, Assistant Vice President-External Affairs  
Southwestern Bell Telephone Company  
St. Louis, Missouri



NO SUPPLEMENT TO THIS TARIFF WILL BE ISSUED EXCEPT FOR THE PURPOSE OF CANCELING THIS TARIFF.

### P. S. C. Mo. No. 17 EXCHANGE AREA MAP

Fayette, Missouri  
151A REVISED SHEET 3  
REPLACING 1966 REVISED SHEET 3



Issued: April 11, 1977

By R. B. SHOCKLEY, Vice President, Missouri  
Southwestern Bell Telephone Company  
St. Louis, Missouri

Effective: June 27, 1977

# ATTENTION

AT&T Missouri  
PSC MO No. 17  
Fenton, Missouri  
16<sup>th</sup> Revised Sheet 2 Replacing 15<sup>th</sup> Revised Sheet 2

This tariff page contains a map that is not available electronically.

To obtain a copy of the document, please send a written request to the Data Center.

E-mail: [datacenter-psc@psc.mo.gov](mailto:datacenter-psc@psc.mo.gov)

Regular Mail: Missouri Public Service Commission  
Data Center  
P.O. Box 360  
Jefferson City, MO 65102

Fax: 573-522-6176

Please call the Data Center at 573-751-7496 if you have any questions.

FERGUSON

see

St. Louis District Exchange RATES

under

"St. Louis"

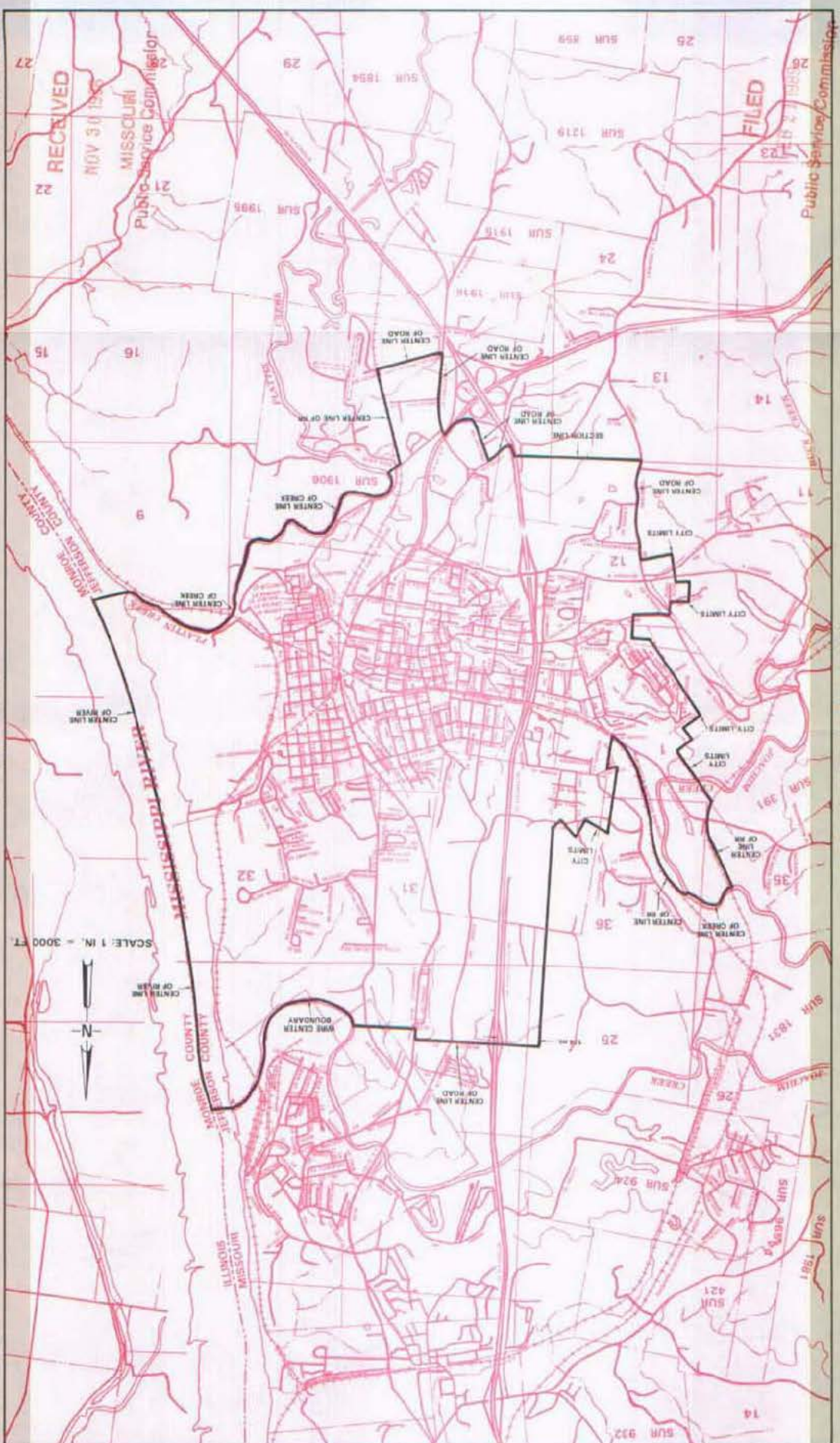
June 1, 1937



Festus - Crystal City, Missouri  
3rd REVISED SHEET 2  
REPLACING 2nd REVISED SHEET 2

P. S. C. Mo. No. 17  
BASE RATE AREA MAP

NO SUPPLEMENT TO THIS TARIFF WILL  
BE ISSUED EXCEPT FOR THE PURPOSE OF  
CANCELING THIS TARIFF.



RECEIVED  
NOV 30 1954  
MISSOURI  
Public Service Commission

FILED  
FEB 21 1959  
Public Service Commission

ISSUED: 5 1958  
By R. D. BARRON, President, Missouri Division  
Southwestern Bell Telephone Company  
St. Louis, Missouri

Effective: FEB 21 1959



**P. S. C. Mo. No. 17  
EXCHANGE AREA MAP**

**Festus-Crystal City, Missouri**

9th REVISED SHEET 3  
REPLACING 8th REVISED SHEET 3

NO SUPPLEMENT TO THIS TARIFF WILL  
BE ISSUED EXCEPT FOR THE PURPOSE OF  
CANCELING THIS TARIFF.



By **KAREN JENNINGS**, President - Missouri  
Southwestern Bell Telephone Company  
St. Louis, Missouri

Issued: September 20, 1996

Effective: October 20, 1996

140N  
141N  
142N  
143N  
144N  
145N  
146N  
147N  
148N  
149N

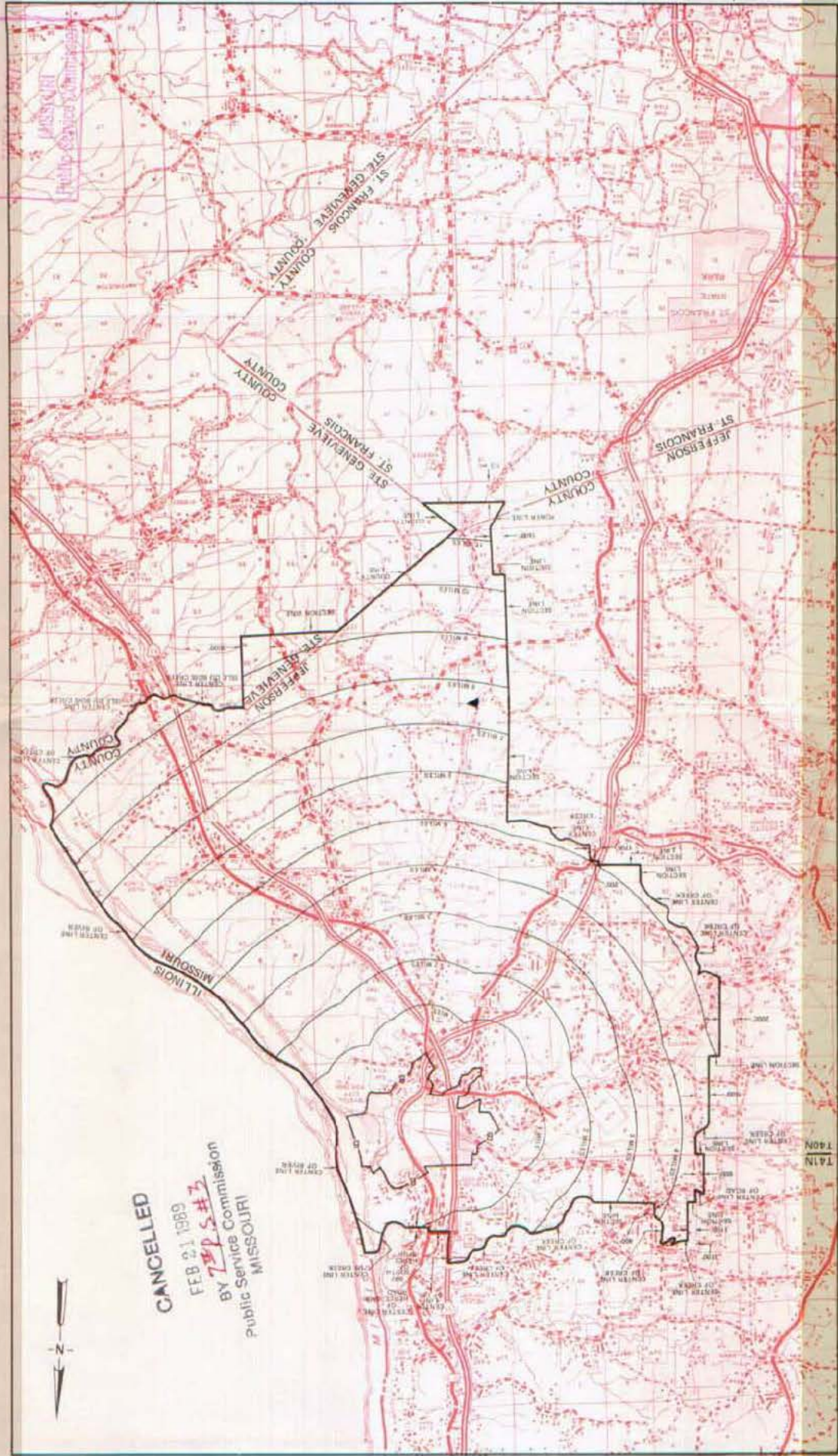
R4E R5E R6E R7E R8E R9E R4E R5E R6E R7E R8E R9E



NO SUPPLEMENT TO THIS TARIFF WILL BE ISSUED EXCEPT FOR THE PURPOSE OF CANCELING THIS TARIFF.

P. S. C. Mo. No. 17  
EXCHANGE AREA MAP

Eastern-Crystal City, Missouri  
**REVISED**  
REPLACING 7th REVISED SHEET 3  
REPLACING 7th REVISED SHEET 3



Effective: DEC 1 1977  
Public Service Commission

By R. R. SHOCKLEY, Vice President, Missouri  
Southwestern Bell Telephone Company  
St. Louis, Missouri

Issued: May 23, 1977

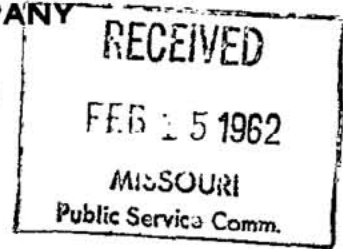


No supplement to this tariff will be issued except for the purpose of canceling this tariff.

P.S.C. Mo.—No. 17

FISK, MISSOURI  
1st Revised Sheet 1  
Replacing Original Sheet 1

**SOUTHWESTERN BELL TELEPHONE COMPANY**  
**LOCAL EXCHANGE TARIFF**  
SUPERSEDING ALL TARIFFS PREVIOUSLY ISSUED



For local rates applicable to Fisk please refer to the local exchange tariff Sheet 1 and Sheet 1-B.

FILED

MAR 18 1962

PUBLIC SERVICE COMMISSION

Issued: February 16, 1962

Effective: March 18, 1962

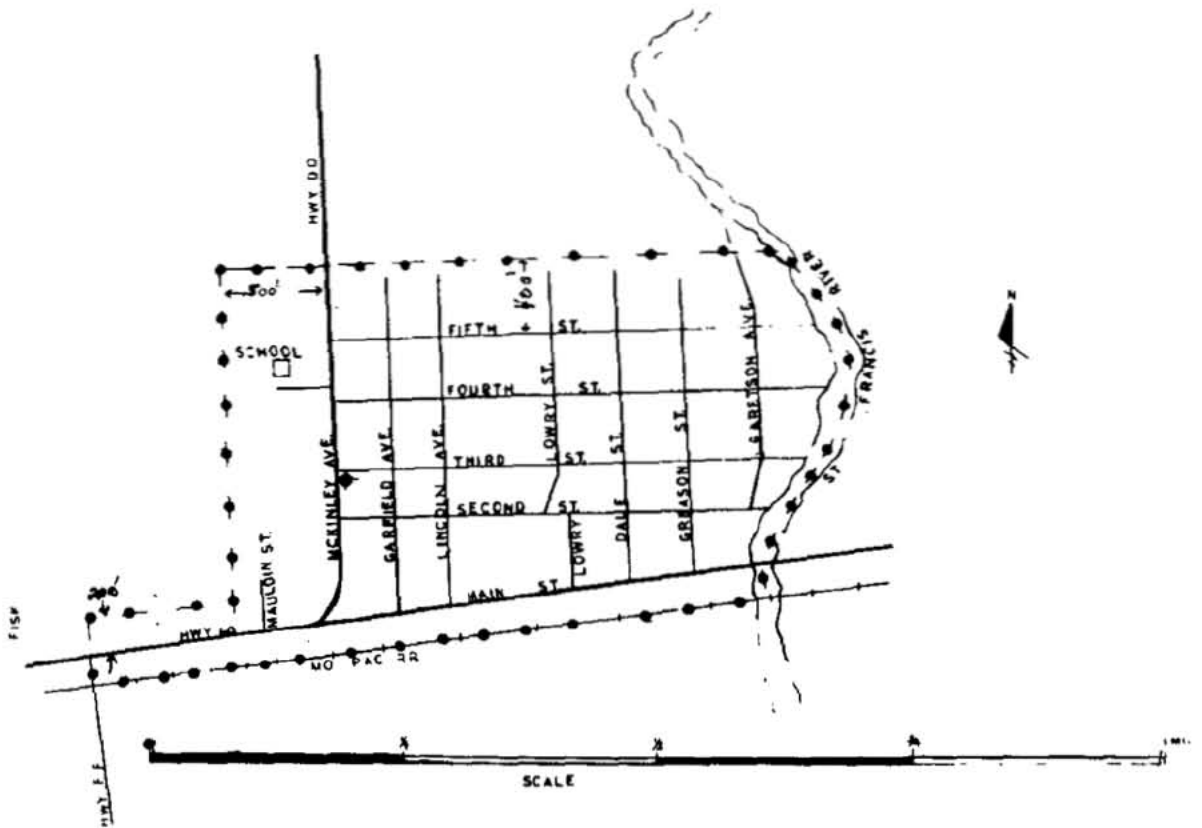
By F. B. HUNT, Vice President and General Manager  
Southwestern Bell Telephone Company  
St. Louis, Missouri

NO SUPPLEMENT TO THIS TARIFF WILL BE ISSUED EXCEPT FOR THE PURPOSE OF CANCELING THIS TARIFF.

Fisk, Misso... ORIGINAL SHEET

P. S. C. Mo. No. 17  
BASE RATE AREA MAP

RECEIVED  
MAR 7 - 1960  
MISSOURI  
Public Service Comm.



FILED

MAR 11 1960

Case No. 14,296  
PUBLIC SERVICE COMMISSION

CODE
BELL CENTRAL OFFICE: *
BASE RATE AREA LIMITS: —●—

ISSUED UNDER ORDER OF THE PUBLIC SERVICE COMMISSION IN CASE No. 14296.

Issued: March 11, 1960

Effective: March 11, 1960

By F. B. HUNT, Vice President and General Manager  
Southwestern Bell Telephone Company  
St. Louis, Missouri

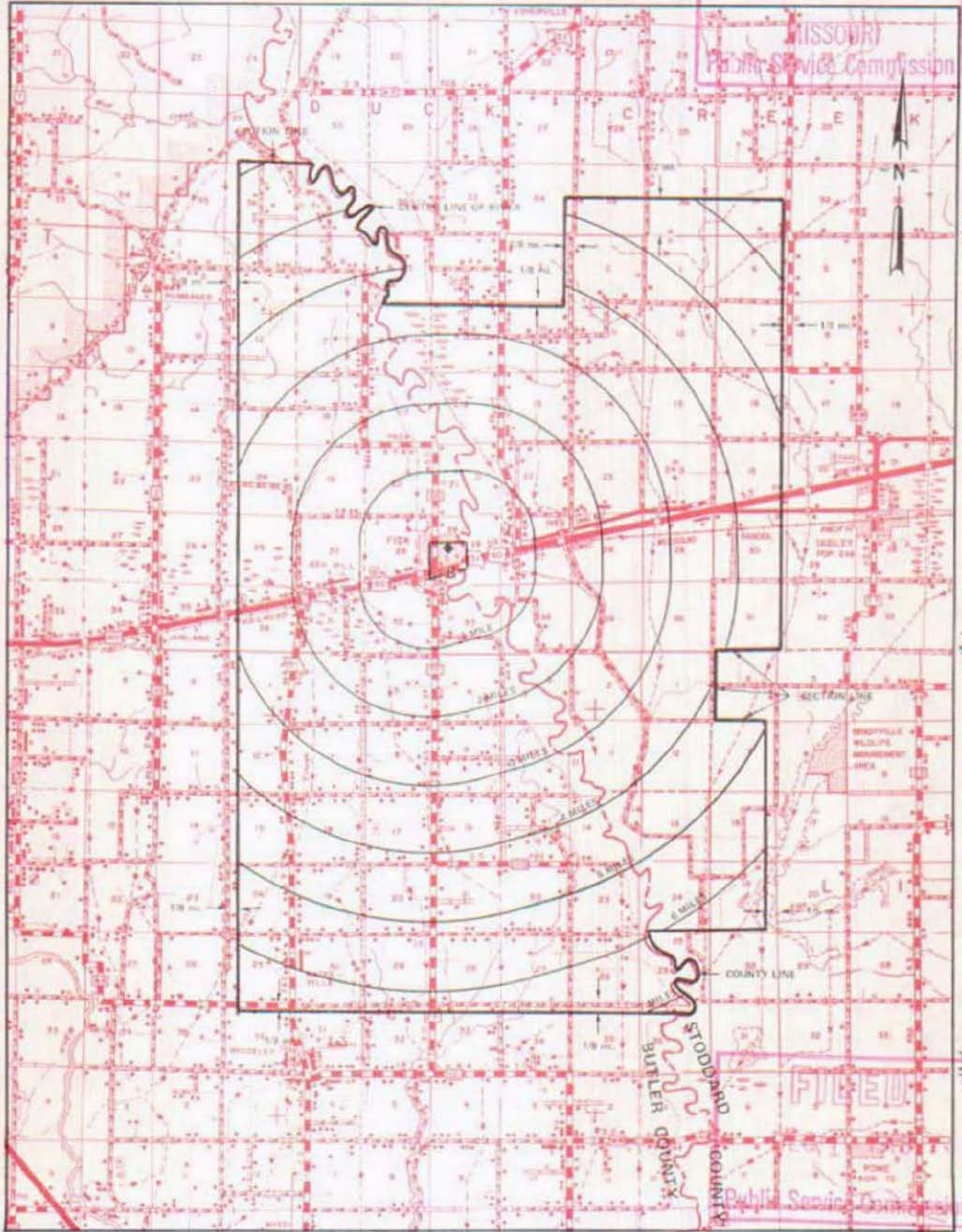
NO SUPPLEMENT TO THIS TARIFF WILL BE ISSUED EXCEPT FOR THE PURPOSE OF CANCELING THIS TARIFF.

P. S. C. Mo. No. 17

EXCHANGE AREA MAP

Fisk, Missouri  
RECEIVED  
5th REVISED SHEET 3  
REPLACING 4th REVISED SHEET 3  
FEB 14 1977

MISSOURI  
Public Service Commission



T26N  
T25N

T25N  
T24N

T24N  
T23N

R7E | R8E

R8E | R9E

By R. R. SHOCKLEY, Vice President, Missouri  
Southwestern Bell Telephone Company  
St. Louis, Missouri

Issued: February 15, 1977

Effective: DEC 1 1978

FILED  
Public Service Commission



SBC PSC MO #17  
Flat River, Missouri  
1<sup>st</sup> Revised Sheet 2  
Replacing Original Sheet 2

# Non-Scannable Map

(Is viewable in the Data Center  
200 Madison Street, 1<sup>st</sup> Floor  
Jefferson City MO)

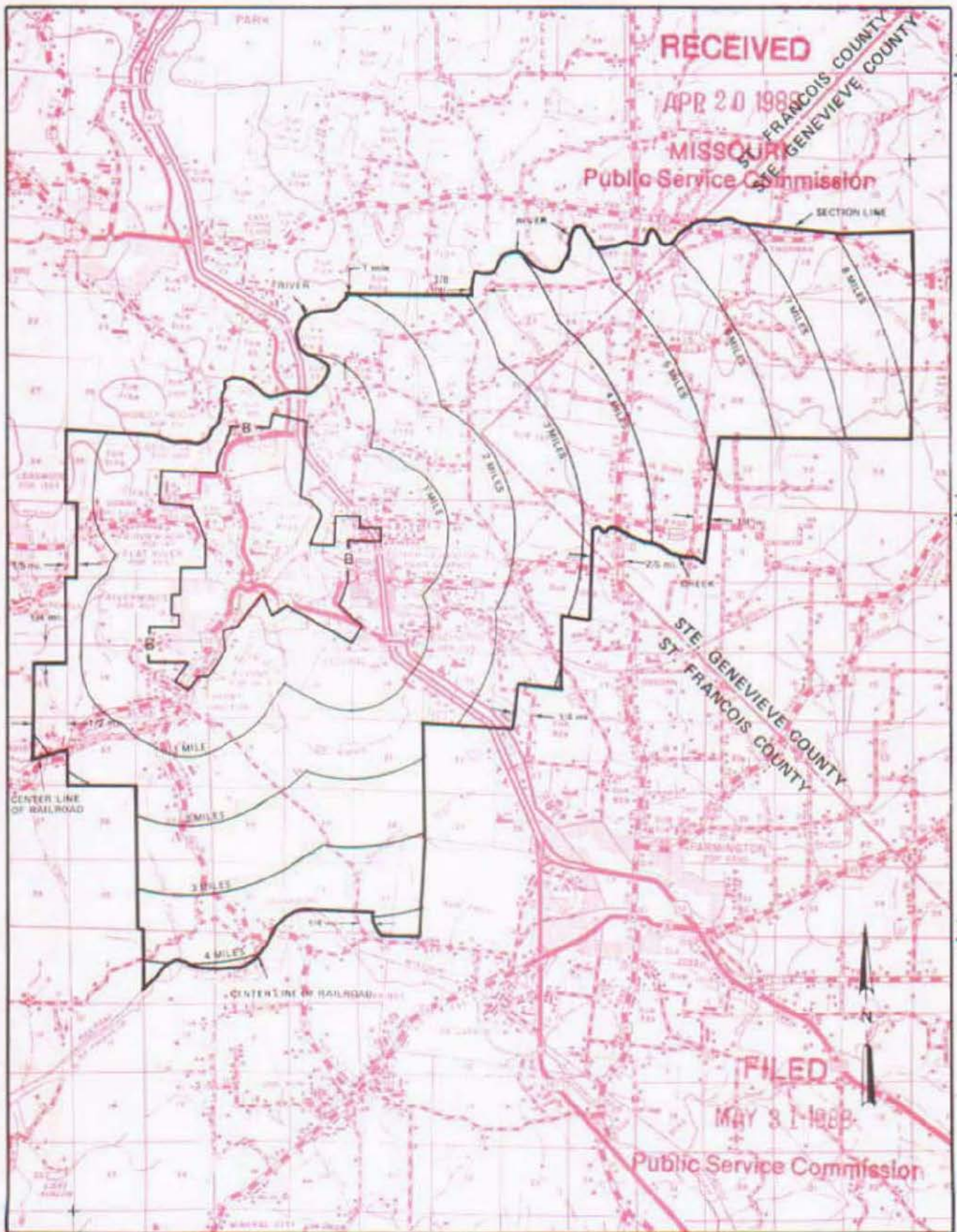
NO SUPPLEMENT TO THIS TARIFF WILL BE ISSUED EXCEPT FOR THE PURPOSE OF CANCELING THIS TARIFF.

P. S. C. Mo. No. 17

Flat River, Missouri

EXCHANGE AREA MAP

7th REVISED SHEET 3  
REPLACING 6th REVISED SHEET 3



R4E | R5E

R5E | R6E

By R. D. BARRON, President, Missouri Division  
Southwestern Bell Telephone Company  
St. Louis, Missouri

Issued: APRIL 29, 1988

Effective: MAY 31, 1988



**P.S.C. Mo. - No. 17**  
**LOCAL EXCHANGE - MISSOURI PORTION TARIFF**

Southwestern Bell Telephone  
Company d/b/a AT&T Missouri

Section 3  
43rd Revised Sheet 1  
Replacing 42nd Revised Sheet 1

**MISSOURI PORTION - FORT SCOTT, KANSAS EXCHANGE**

**I. GENERAL**

This Tariff is governed, except as otherwise specified herein, by all other Tariffs of the Southwestern Bell Telephone Company on file in the State of Missouri, which are hereby made a part of this Tariff. Unless otherwise specified, the charges quoted in this Tariff or in any other Missouri Tariff are for periods of one month, are payable monthly in advance and entitle the customer to exchange telephone service within the Fort Scott Exchange Area. This Exchange Area includes, in addition to the Missouri Portion, certain territory in the State of Kansas comprising the City of Fort Scott and vicinity, as shown on the Exchange Area Map for this exchange

**2. RATES**

- A. The rates for main service do not include a Telephone Company-provided instrument, except for Semi-Public Service, which includes one station equipped with a coin-collecting device.
- B. Within the Missouri portion of the exchange, rates will be frozen until March 1, 1995. Urban mileage charges as set forth in Paragraph C. and D. following, apply as applicable, in addition to exchange rates when service is provided outside the Base Rate Area. Exchange rates are as follows:

1. Flat Rate Service	<u>Current Rates(1)(2)</u>	
	<u>Business</u>	<u>Residence</u>
One-Party	\$75.50	\$ 24.00 (CR)
Lifeline	N/A	(3)
One-Party Multiline	75.50	N/A
PBX Trunk	75.50	14.70

- (1) For the period of November 26, 2008 through November 25, 2012, prices for residence basic local service in this exchange will be governed by Section 392.245.5(7) RSMo.
- (2) For the period of November 26, 2008 through November 25, 2012, prices for business basic local service in this exchange will be governed by Section 392.245.5(7) RSMo
- (3) A customer eligible under established criteria can receive a discount from his or her bill for residential essential local telecommunications services, in accordance with P.S.C. Mo. – No. 24, Local Exchange Tariff, Section 1.2.2.E, regarding Lifeline Service.

Issued: December 24, 2013

By JOHN SONDAG, President - Missouri  
St. Louis, Missouri

Effective: January 3, 2014

**FILED**  
**Missouri Public**  
**Service Commission**  
**JI-2014-0269**

**P.S.C. Mo. - No. 17**  
**LOCAL EXCHANGE - MISSOURI PORTION TARIFF**

Southwestern Bell Telephone  
Company d/b/a AT&T Missouri

Section 3  
13th Revised Sheet 1.1  
Replacing 12th Revised Sheet 1.1

**MISSOURI PORTION - FORT SCOTT, KANSAS EXCHANGE**

**2. RATES (cont'd)**

- C. The following urban mileage charge applies to those customers provided exchange service located outside the base rate area:

	Current Rates (1)(2)		
	USOC	Monthly Rate	
Urban Mileage Charge, per line	1LS1H	\$1.94	(CR)

- D. The following urban mileage charge applies to former two-party customers who were located two miles beyond the Suburban Service Area boundary prior to the conversion of the exchange to one-party service. The charge applies to "existing installations, at existing locations, for existing customers":

	Current Rates (1)(2)		
	USOC	Monthly Rate	
Urban Mileage Charge, per line	XUDV3	\$3.26	

- (1) For the period of November 26, 2008 through November 25, 2012, prices for residence basic local service in this exchange will be governed by Section 392.245.5(7) RSMo.  
(2) For the period of November 26, 2008 through November 25, 2012, prices for business basic local service in this exchange will be governed by Section 392.245.5(7) RSMo.

Issued: August 2, 2013

Effective: August 3, 2013

By JOHN SONDAG, President - Missouri  
St. Louis, Missouri

**FILED**  
**Missouri Public**  
**Service Commission**  
**JI-2014-0053**



**P.S.C. Mo. - No. 17**  
**LOCAL EXCHANGE - MISSOURI PORTION TARIFF**

Southwestern Bell Telephone  
Company d/b/a AT&T Missouri

Section 3  
8th Revised Sheet 1.2  
Replacing 7th Revised Sheet 1.2

---

7th Revised Sheet 1.2 was previously 7th Revised Sheet 1.02 (AT)

(RT)

(RT)

---


Issued: July 2, 2009


By DAVID NICHOLS, President - Missouri  
St. Louis, Missouri


Effective: July 12, 2009

Filed  
Missouri Public  
Service Commission  
JI-2010-0004

**LEGEND**

 **CITY**

 **EXCHANGE AREA BOUNDARY**

 **BASE RATE AREA BOUNDARY**

**SCALE: 3/8" = 1 MILE**

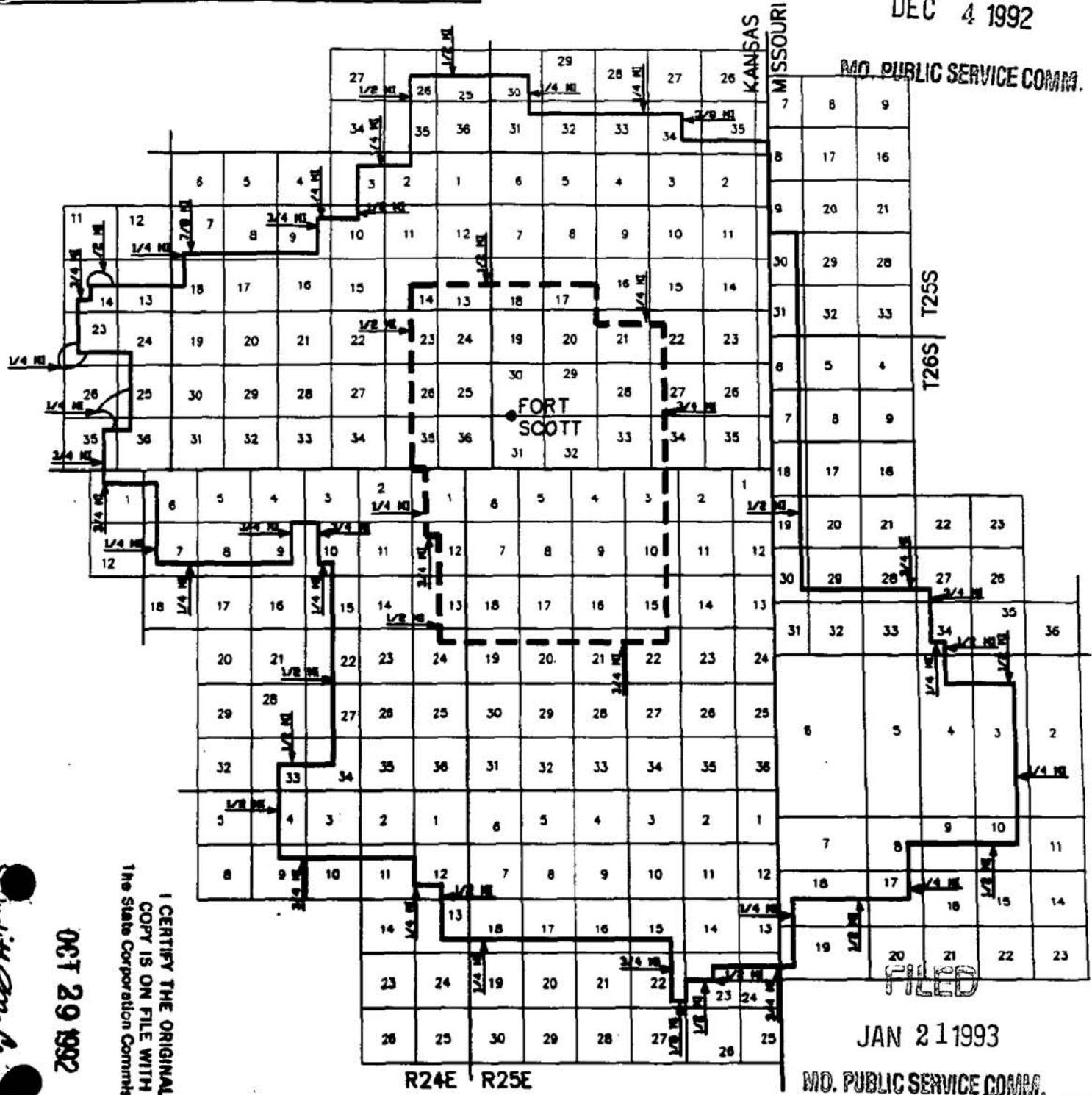
FT. SCOTT, KANSAS  
 17th Revised Sheet 1-B  
 Replacing 16th Revised Sheet 1-B

**EXCHANGE AREA MAP**

**RECEIVED**

DEC 4 1992

KAN PUBLIC SERVICE COMMISSION



*Quill McConell*  
 EXECUTIVE DIRECTOR

OCT 29 1992

I CERTIFY THE ORIGINAL COPY IS ON FILE WITH THE State Corporation Commission

FILED

JAN 21 1993

KAN. PUBLIC SERVICE COMMISSION  
 JAN 21 1993

EFFECTIVE SEPT. 16, 1992 THE ONLY GRADE OF SERVICE AVAILABLE IS ONE PARTY

ISSUED: AUG 18 1992

EFFECTIVE: SEP 16 1992

BY: J.W. CALLAWAY, President - Kansas Division  
 Southwestern Bell Telephone Company  
 Topeka, Kansas

SVE1317

Commission Docket No. 166856-U

FILED AUG 20 1992

THE STATE CORPORATION COMMISSION OF KANSAS

By *Quill McConell* SECRETARY



NO SUPPLEMENT TO THIS TARIFF WILL BE ISSUED EXCEPT FOR THE PURPOSE OF CANCELING THIS TARIFF.

P. S. C. Mo. No. 17

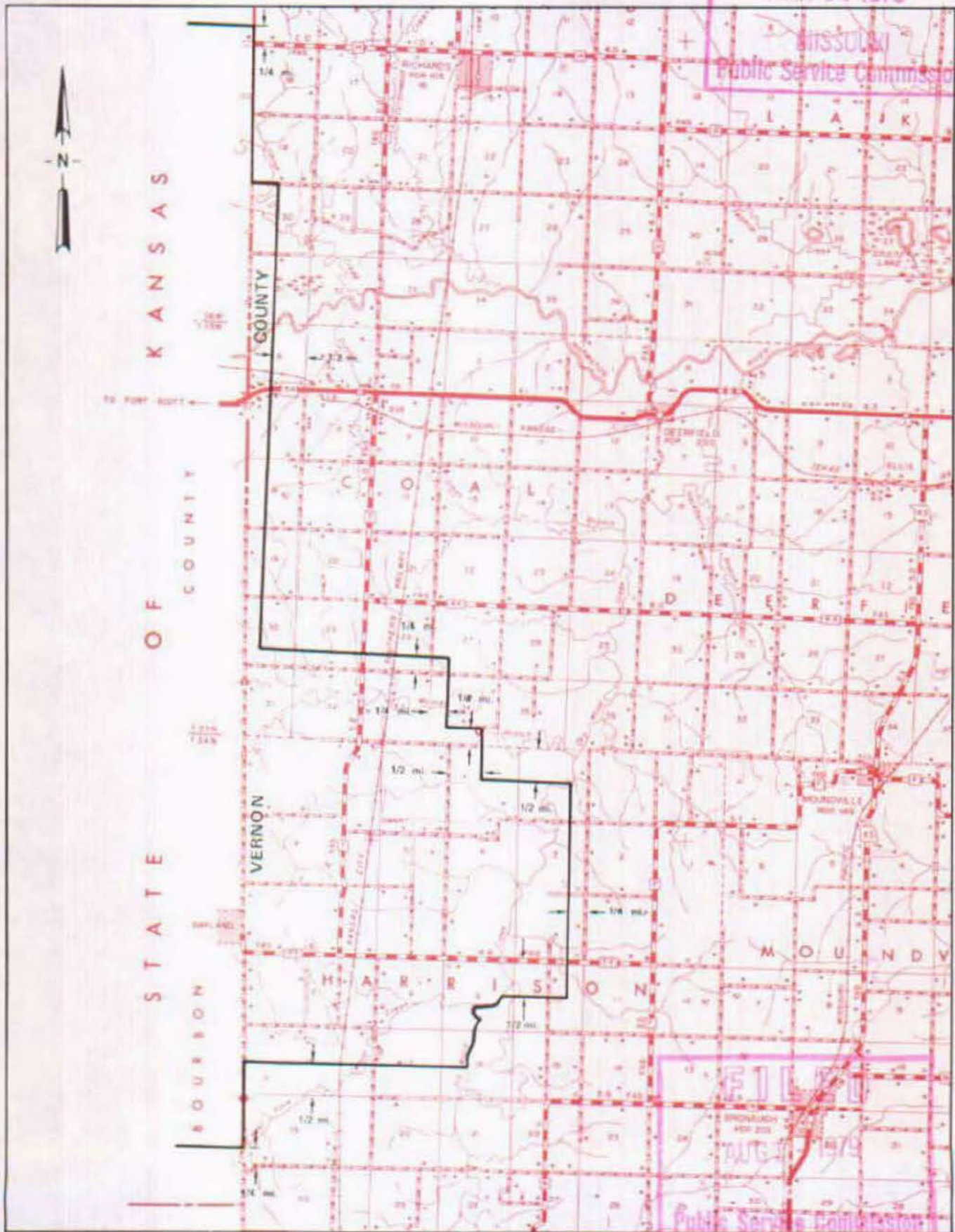
Missouri Portion  
Ft. Scott, Kansas

RECEIVED  
1st REVISED SHEET 2  
REPLACING ORIGINAL SHEET 2

EXCHANGE AND BASE RATE AREA MAP

MAR 30 1979

MISSOURI  
Public Service Commission



T36N  
T35N

T35N  
T34N

R34W | R33W

R33W | R32W

By R. R. SHOCKLEY, Vice President, Missouri  
Southwestern Bell Telephone Company

AUG 1 - 1979

RECEIVED  
AUG 1 1979  
MISSOURI  
Public Service Commission

SBC PSC MO #17  
Frankford, Missouri  
Original Sheet 2  
Replacing Western Light & Telephone  
Company's P.S.C. Mo. No. 6  
Original Sheet 5  
Pike County

# Non-Scannable Map

(Is viewable in the Data Center  
200 Madison Street, 1<sup>st</sup> Floor  
Jefferson City MO)



NO SUPPLEMENT TO THIS TARIFF WILL BE ISSUED EXCEPT FOR THE PURPOSE OF CANCELING THIS TARIFF.

P. S. C. Mo. No. 17  
EXCHANGE AREA MAP

Frankford, Missouri  
7th REVISED SHEET 3  
REPLACING 6th REVISED SHEET 3

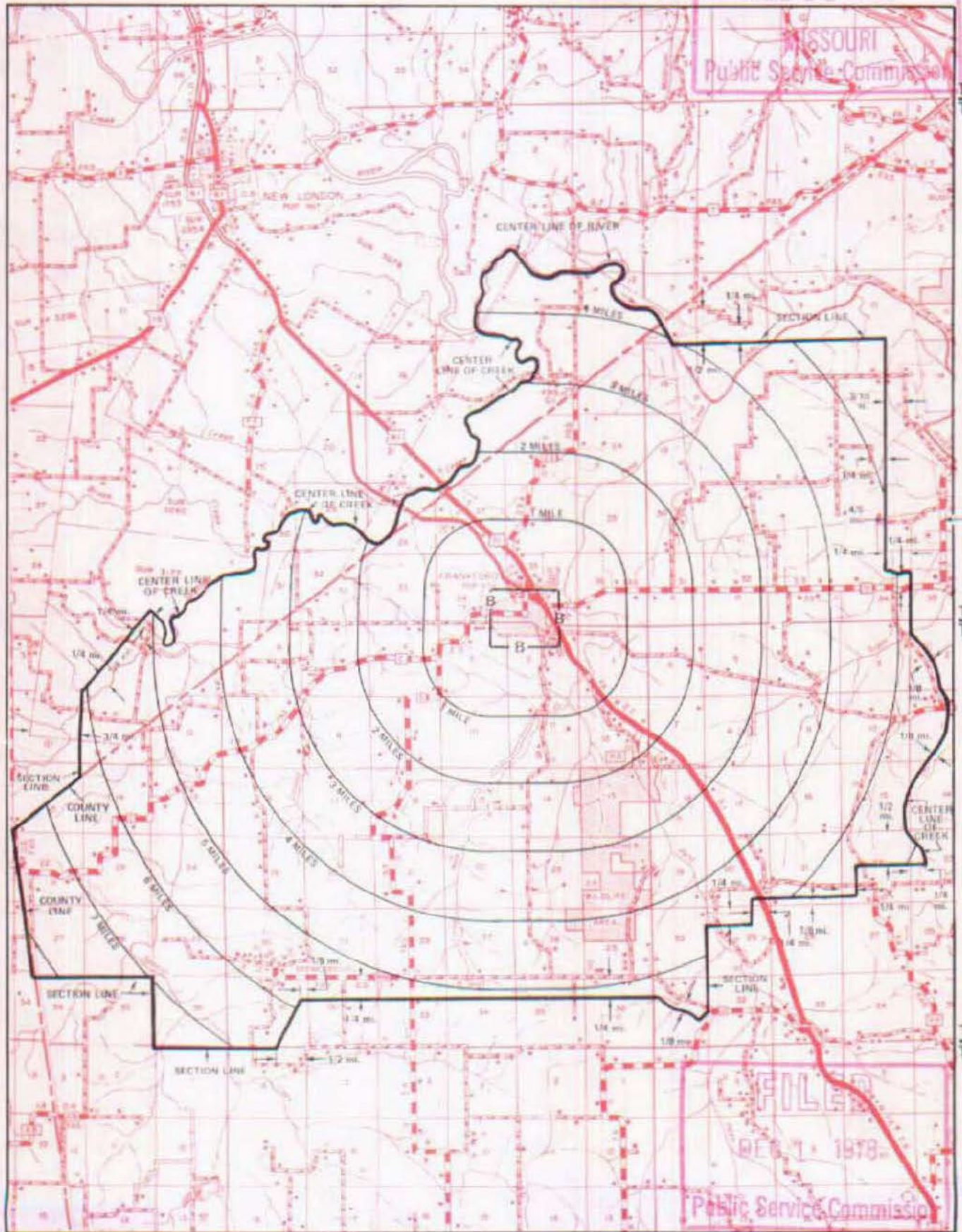
FEB 14 1977

MISSOURI  
Public Service Commission

T56N  
T55N

T55N  
T54N

T54N  
T53N



FILED  
DEC 7 1978  
Public Service Commission

R5W|R4W

R4W|R3W

By R. R. SHOCKLEY, Vice President, Missouri  
Southwestern Bell Telephone Company  
St. Louis, Missouri

DEC 1 1978

SBC PSC MO #17  
Fredericktown, Missouri  
2<sup>nd</sup> Revised Sheet 2  
Replacing 1<sup>st</sup> Revised Sheet 2

# Non-Scannable Map

(Is viewable in the Data Center  
200 Madison Street, 1<sup>st</sup> Floor  
Jefferson City MO)



SBC PSC MO #17  
Fredericktown, Missouri  
18<sup>th</sup> Revised Sheet 3  
Replacing 17<sup>th</sup> Revised Sheet 3

# Non-Scannable Map

(Is viewable in the Data Center  
200 Madison Street, 1<sup>st</sup> Floor  
Jefferson City MO)

SBC PSC MO #17  
Freeburg, Missouri  
Original Sheet 2  
Replacing Original Sheet 2  
Of the Ozark Central Telephone Company  
P.S.C. Mo. No. 1

# Non-Scannable Map

(Is viewable in the Data Center  
200 Madison Street, 1<sup>st</sup> Floor  
Jefferson City MO)



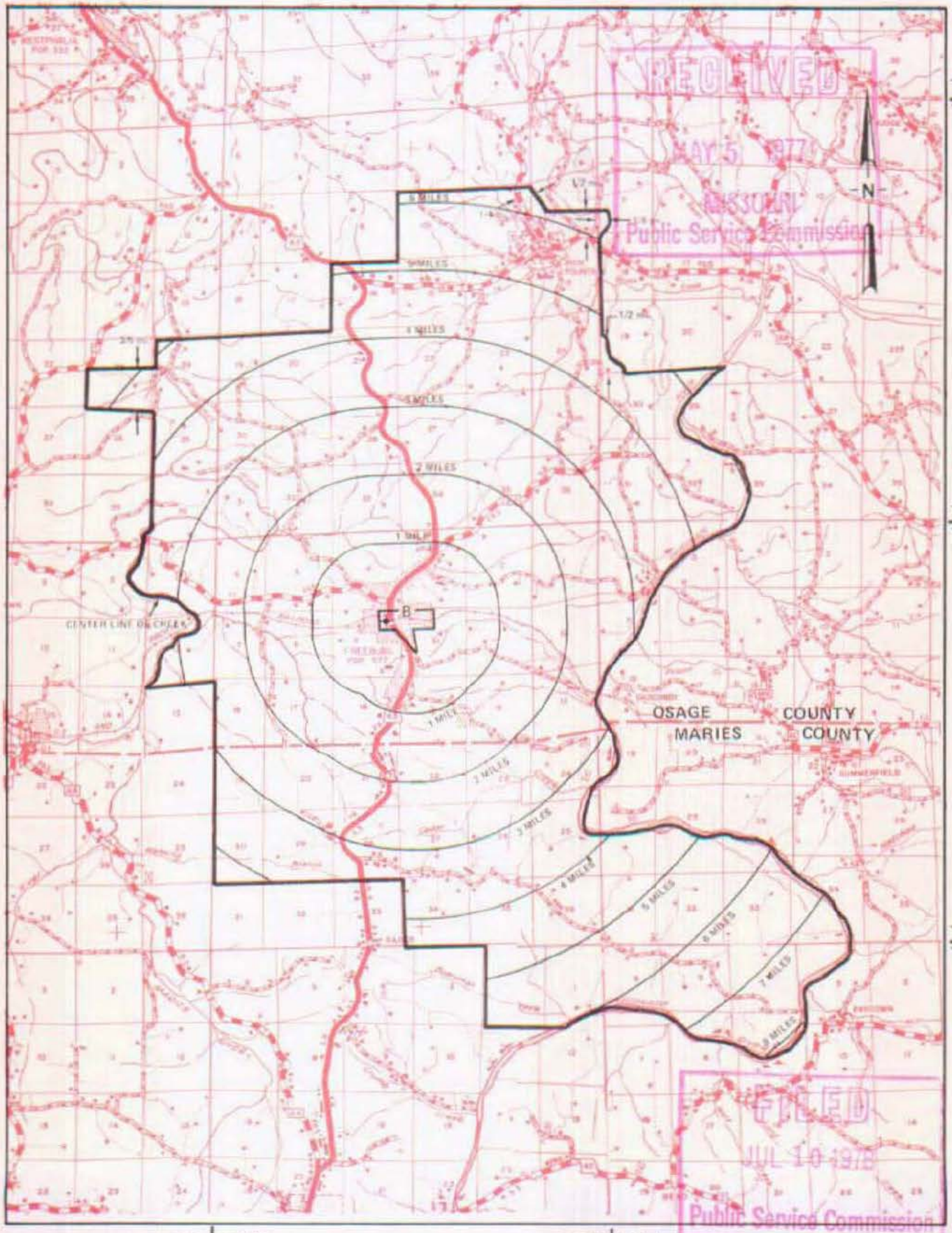
NO SUPPLEMENT TO THIS TARIFF WILL BE ISSUED EXCEPT FOR THE PURPOSE OF CANCELING THIS TARIFF.

P. S. C. Mo. No. 17

Freeburg, Missouri

EXCHANGE AREA MAP

7th REVISED SHEET 3 REPLACING 6th REVISED SHEET 3



T43N  
T42N

T42N  
T41N

T41N  
T40N

R11W | R10W

R10W | R9W

By R. R. SHOCKLEY, Vice President, Missouri  
Southwestern Bell Telephone Company  
St. Louis, Missouri

Issued: MAY 10 1977

Effective: JUL 10 1978

No supplement to this tariff will be issued except for the purpose of canceling this tariff.

P. S. C. Mo.-No. 17

FRUITLAND, MISSOURI  
1ST REVISED SHEET 2  
(REPLACING ORIGINAL SHEET 2)

This exchange is included in the Fair Grove Exchange.

For all rates and charges refer to the Fair Grove Exchange.



FILED

APR 30 1968

PUBLIC SERVICE COMMISSION

---

Issued: March 30, 1968

Effective: April 30, 1968

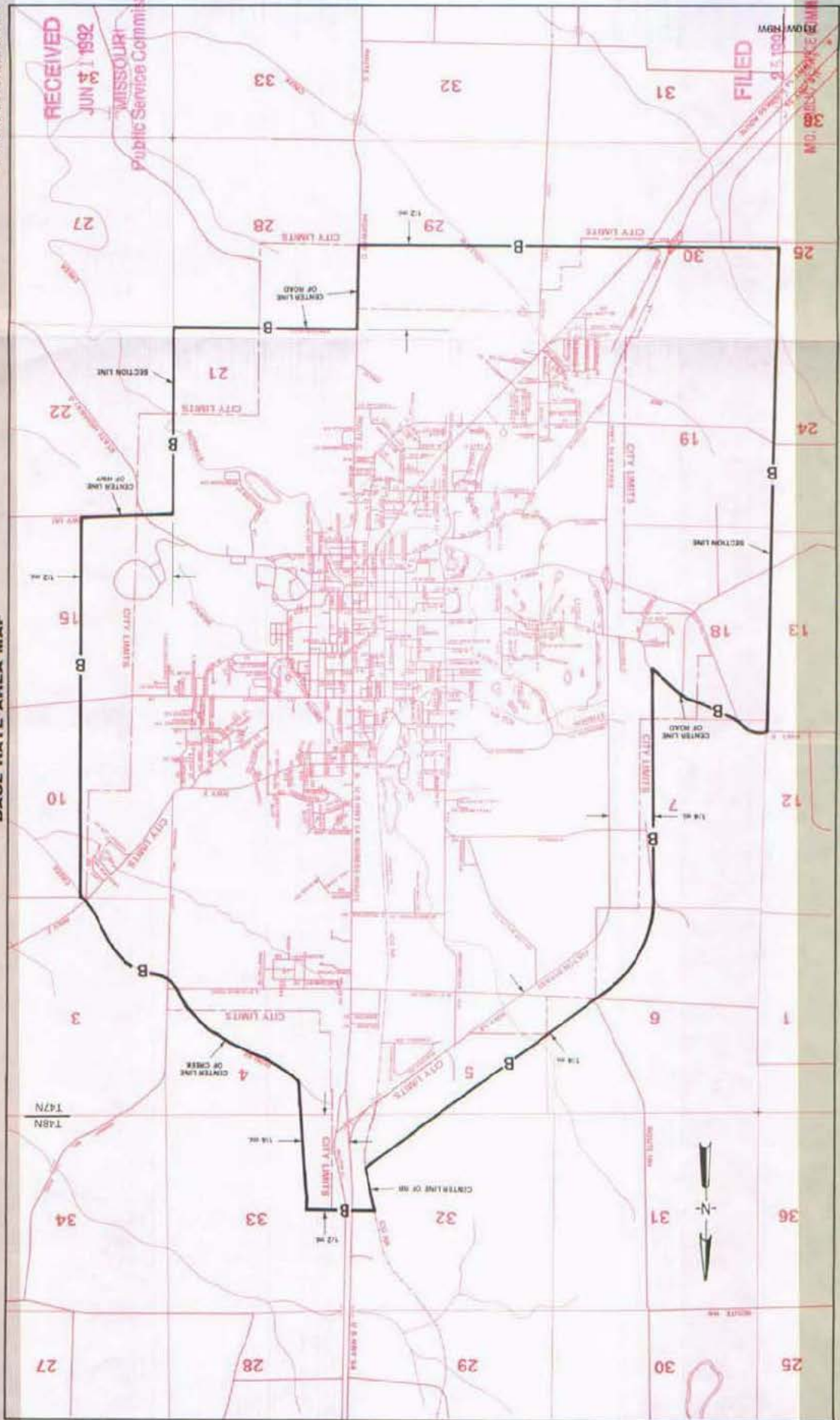
By R. R. SHOCKLEY, Vice President and General Manager  
Southwestern Bell Telephone Company  
St. Louis, Missouri



NO SUPPLEMENT TO THIS TARIFF WILL BE ISSUED EXCEPT FOR THE PURPOSE OF CANCELING THIS TARIFF.

P. S. C. Mo. No. 17  
BASE RATE AREA MAP

Fulton, Missouri  
4th REVISED SHEET ?  
REPLACING 3rd REVISED SHEET ?



RECEIVED  
JUN 4 1952

MISSOURI  
Public Service Commission

FILED  
JUN 5 1952

MISSOURI PUBLIC SERVICE COMMISSION

By R. D. BARRON, PRESIDENT, MISSOURI DIVISION  
Southwestern Bell Telephone Company  
St. Louis, Missouri

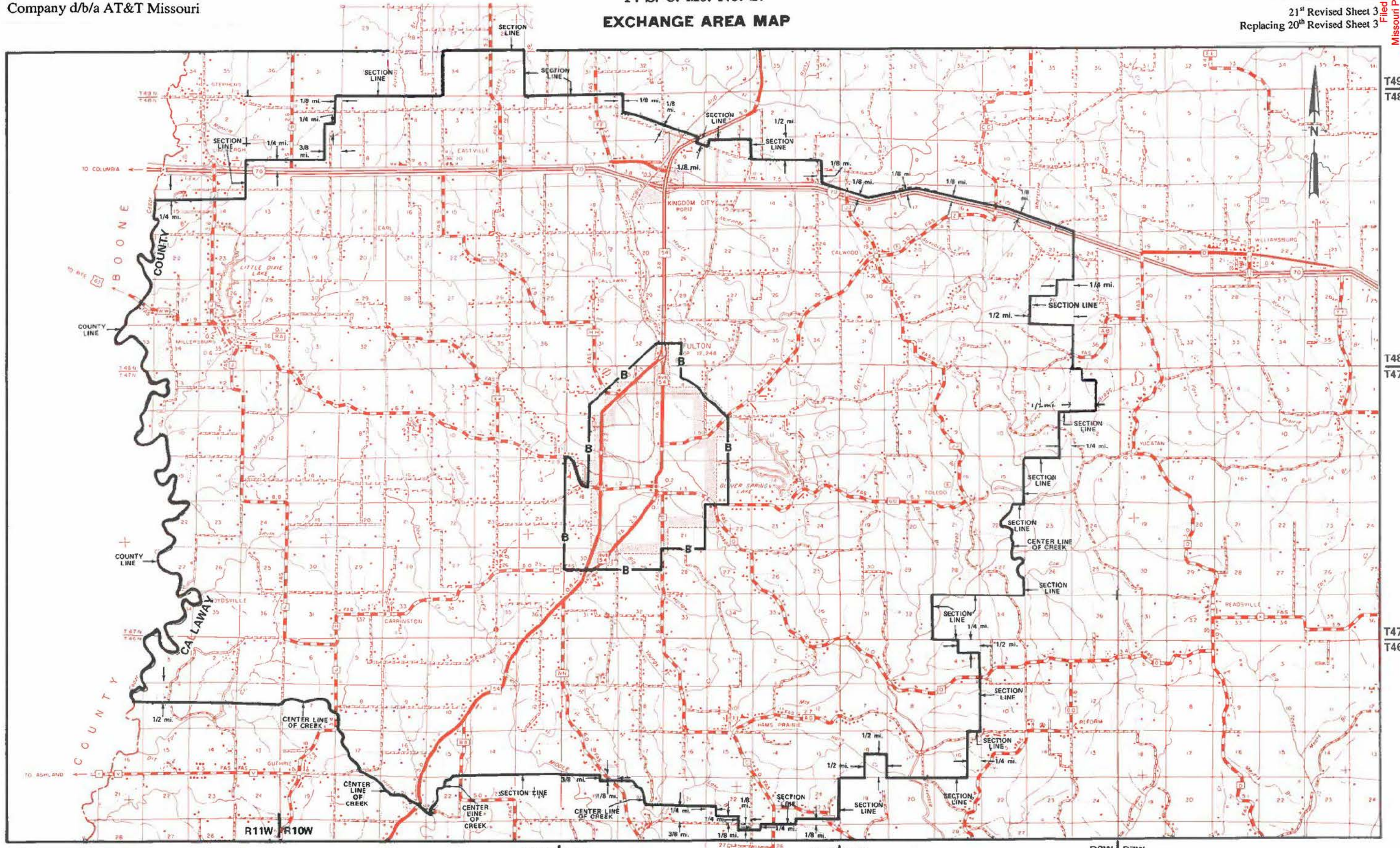
Issued: JUN 5 1952

Effective: JUL 2 5 1952



P. S. C. Mo. No. 17  
**EXCHANGE AREA MAP**

Filed  
Missouri Public  
Service Commission  
J1-2009-0601



T49N  
T48N

T48N  
T47N

T47N  
T46N

R11W | R10W

R10W | R9W

R9W | R8W

R8W | R7W