

SBC PSC MO #17

Gideon, Missouri

Original Sheet 2

Replacing Gideon, 1st Revised Sheet 1-A

And Clarkton, 1st Revised Sheet 1-A

Non-Scannable Map

(Is viewable in the Data Center
200 Madison Street, 1st Floor
Jefferson City MO)

NO SUPPLEMENT TO THIS TARIFF WILL BE ISSUED EXCEPT FOR THE PURPOSE OF CANCELING THIS TARIFF.

P. S. C. Mo. No. 17 EXCHANGE AREA MAP

Gideon, Missouri
RECEIVED
6th REVISED SHEET 3
REPLACING 5th REVISED SHEET 3

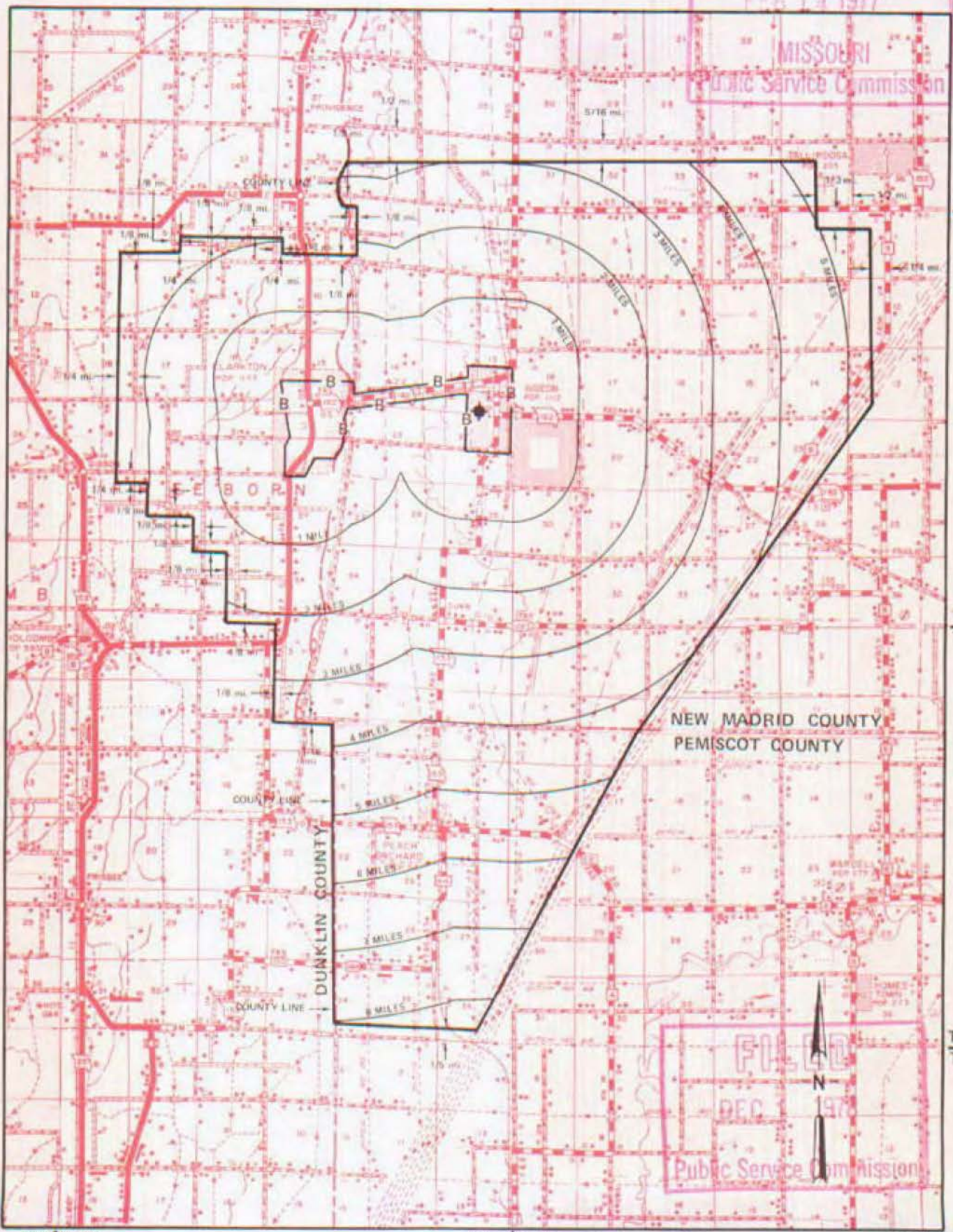
FEB 14 1977

MISSOURI
Public Service Commission

T23N
T22N

T22N
T21N

T21N
T20N



NEW MADRID COUNTY
PEMISCOT COUNTY

FILED
DEC 1 1978
Public Service Commission

R9E|R10E

R10E|R11E

R11E|R12E

By R. R. SHOCKLEY, Vice President, Missouri
Southwestern Bell Telephone Company
St. Louis, Missouri

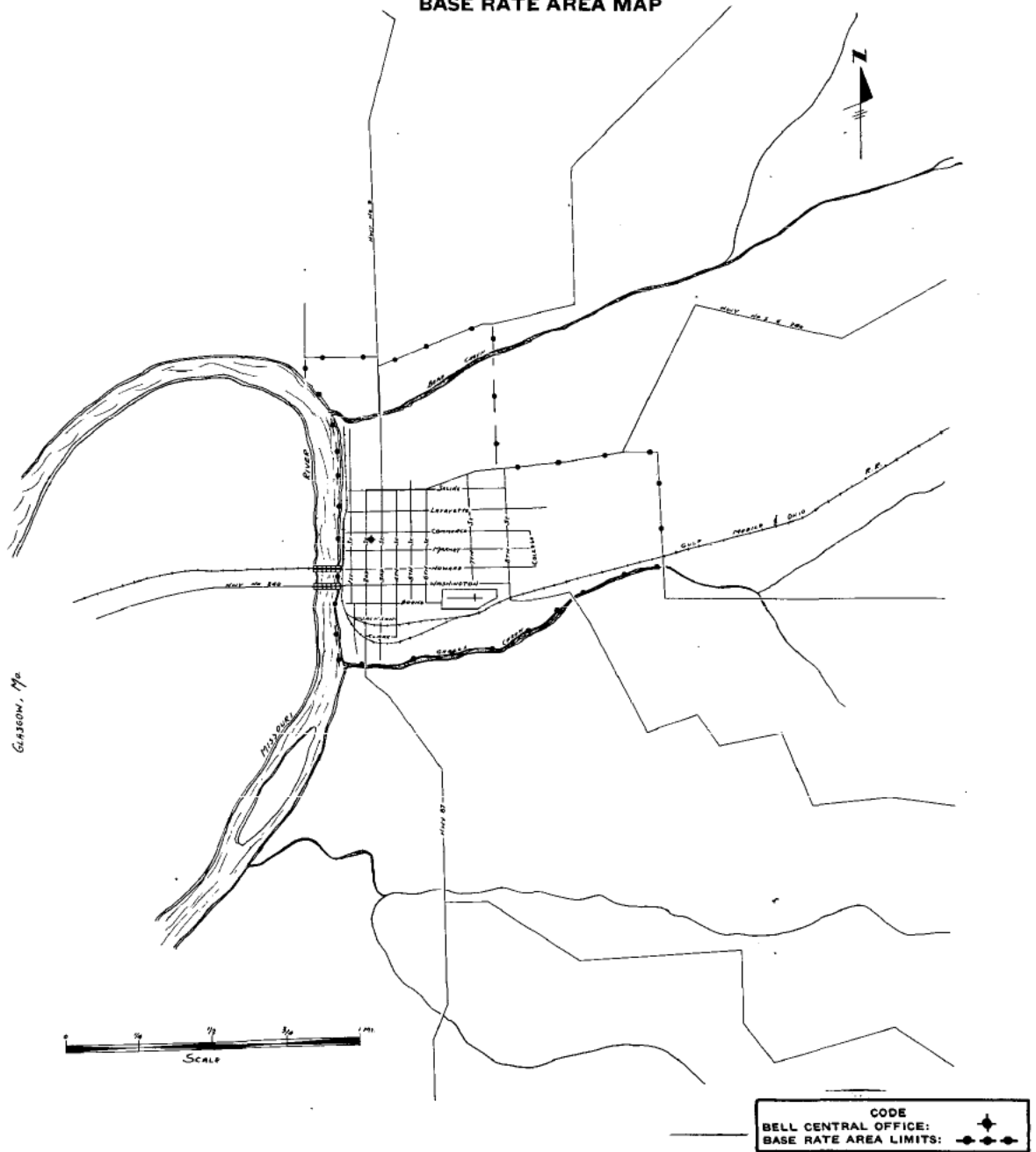
Issued: February 15, 1977

Effective: DEC 1 1978

NO SUPPLEMENT TO THIS TARIFF WILL
BE ISSUED EXCEPT FOR THE PURPOSE OF
CANCELING THIS TARIFF.

Glasgow, Missouri
ORIGINAL SHEET 2
REPLACING ORIGINAL SHEET 1-A

P. S. C.-Mo. No. 17
BASE RATE AREA MAP



Issued: June 27, 1950

Effective: July 6, 1950

By H. R. TOWLES, General Manager
Southwestern Bell Telephone Company
St. Louis, Missouri

NO SUPPLEMENT TO THIS TARIFF WILL BE ISSUED EXCEPT FOR THE PURPOSE OF CANCELING THIS TARIFF.

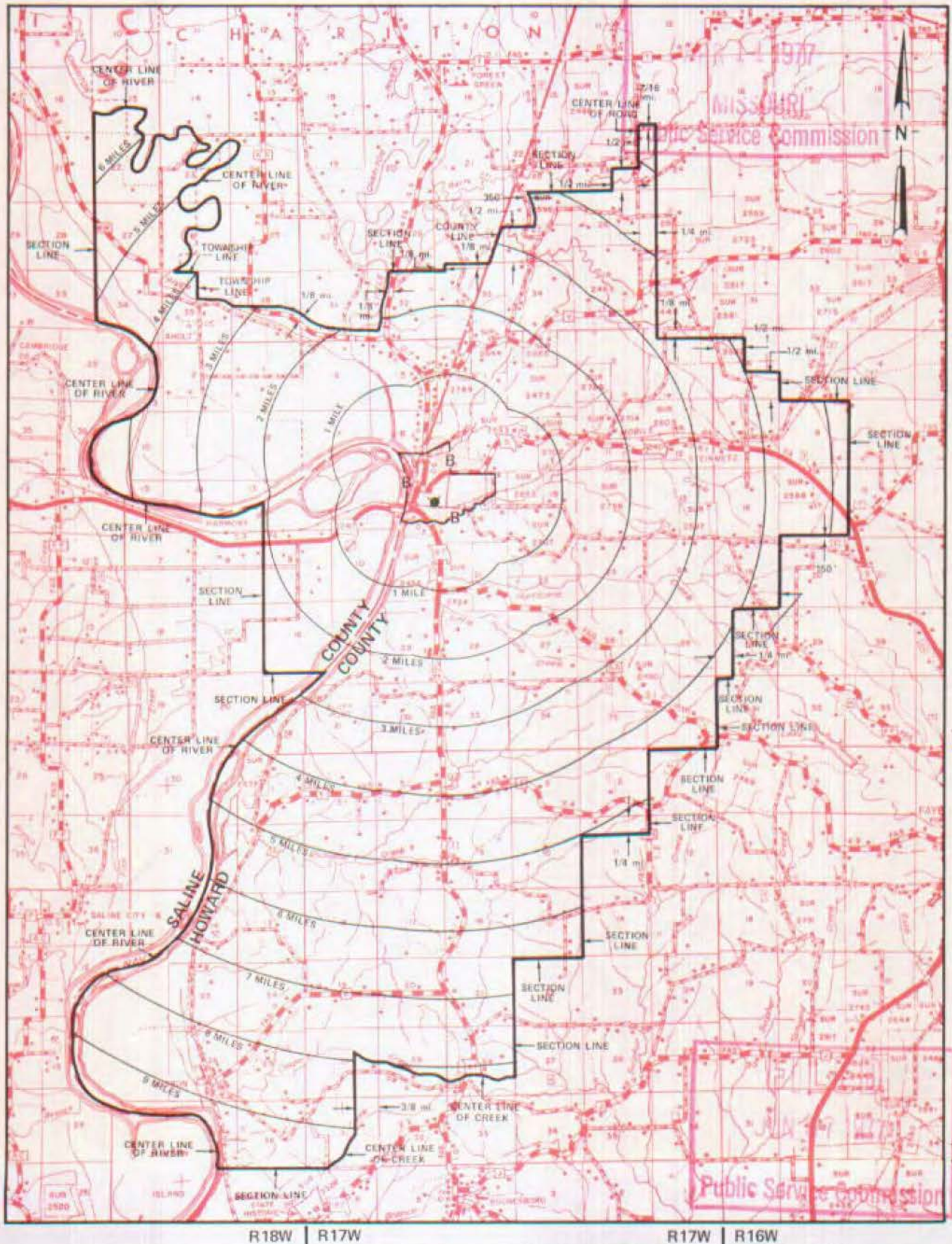
Glasgow, Missouri

P. S. C. Mo. No. 17

6th REVISED SHEET 3
REPLACING 5th REVISED SHEET 3

EXCHANGE AREA MAP

RECEIVED
APR 11 1977
MISSOURI
Public Service Commission



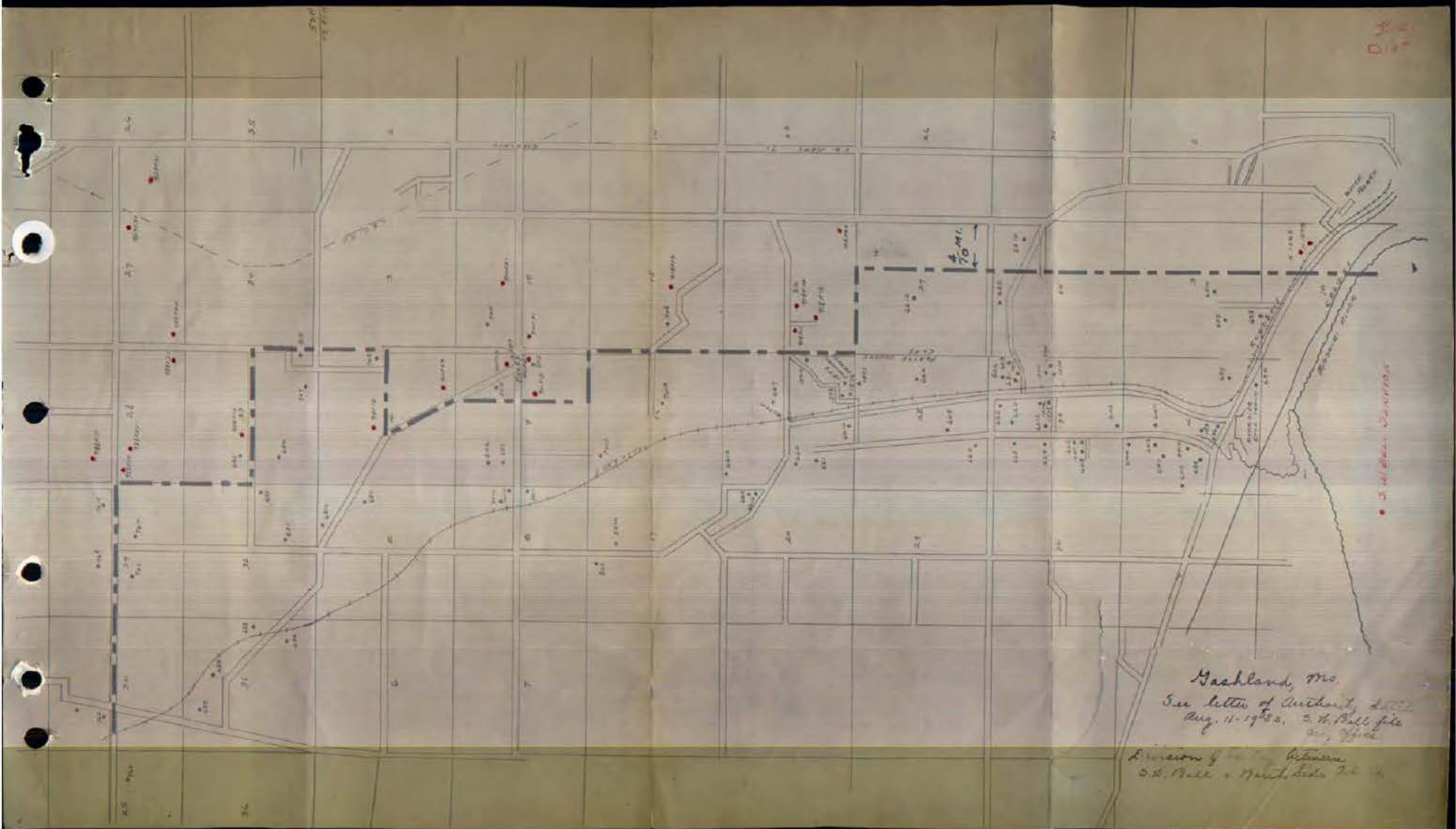
R18W | R17W | R17W | R16W

By R. R. SHOCKLEY, Vice President, Missouri
Southwestern Bell Telephone Company

Issued: April 11, 1977

St. Louis, Missouri

Effective: June 27, 1977



Gashland, Mo.
 See letter of Anthony Little
 Aug. 11-1900. S.H. Bell file
 Div. Office
 Division of Antiquities
 S.H. Bell - Special Agent in Charge

D.W.
 1900

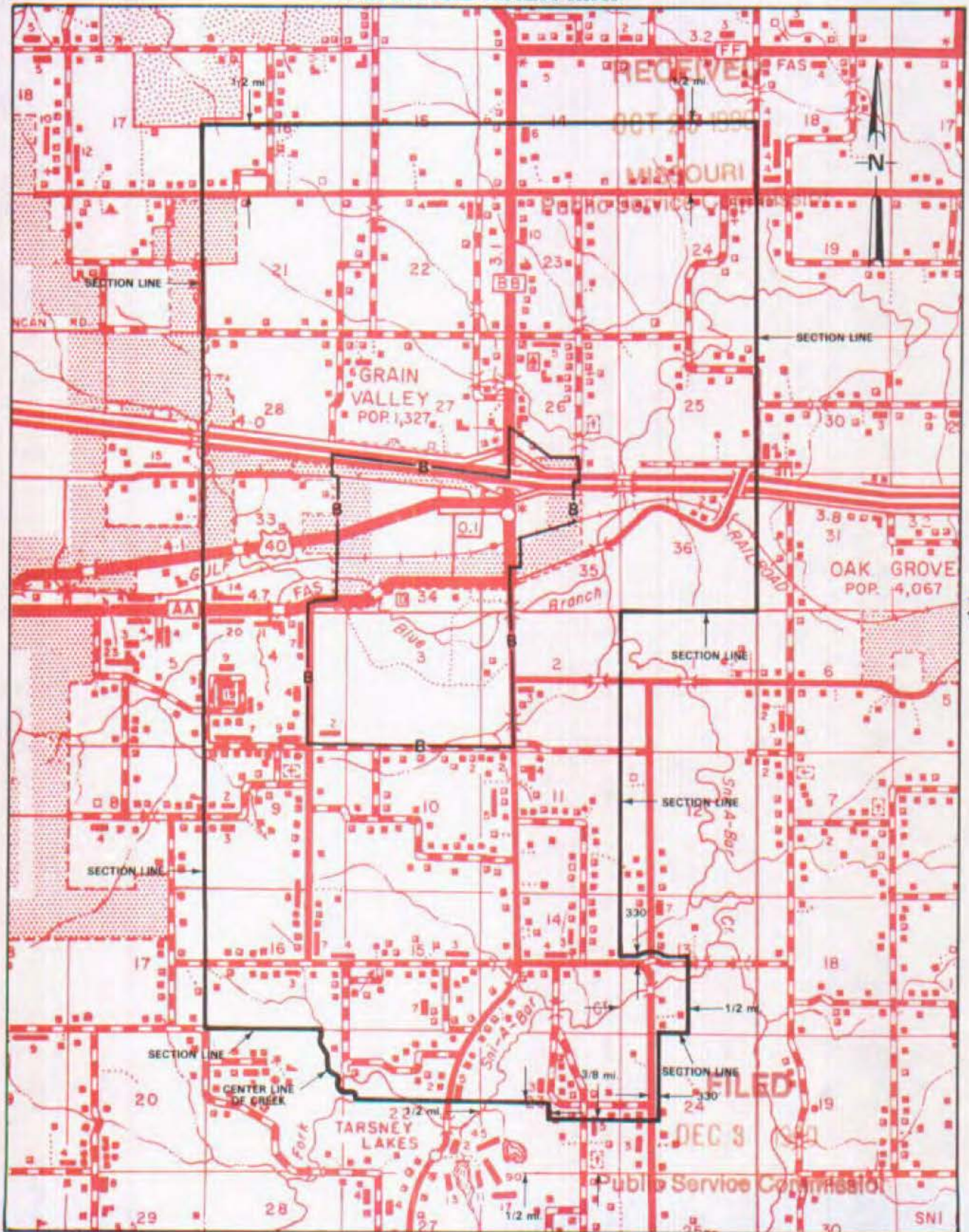
• S. H. Bell - 1900

NO SUPPLEMENT TO THIS TARIFF WILL BE ISSUED EXCEPT FOR THE PURPOSE OF CANCELING THIS TARIFF.

Grain Valley, Missouri

6th REVISED SHEET 3
REPLACING 5th REVISED SHEET 3

P. S. C. Mo. No. 17 EXCHANGE AREA MAP



Issued: NOV 0 1 1990

By R. D. BARRON, PRESIDENT, MISSOURI DIVISION
Southwestern Bell Telephone Company
St. Louis, Missouri

R30W/R29W

Effective: DEC 0 3 1990

NO SUPPLEMENT TO THIS TARIFF WILL BE ISSUED EXCEPT FOR THE PURPOSE OF CANCELING THIS TARIFF.

P. S. C. Mo. No. 17
BASE RATE AREA MAP

Grain Valley, Missouri

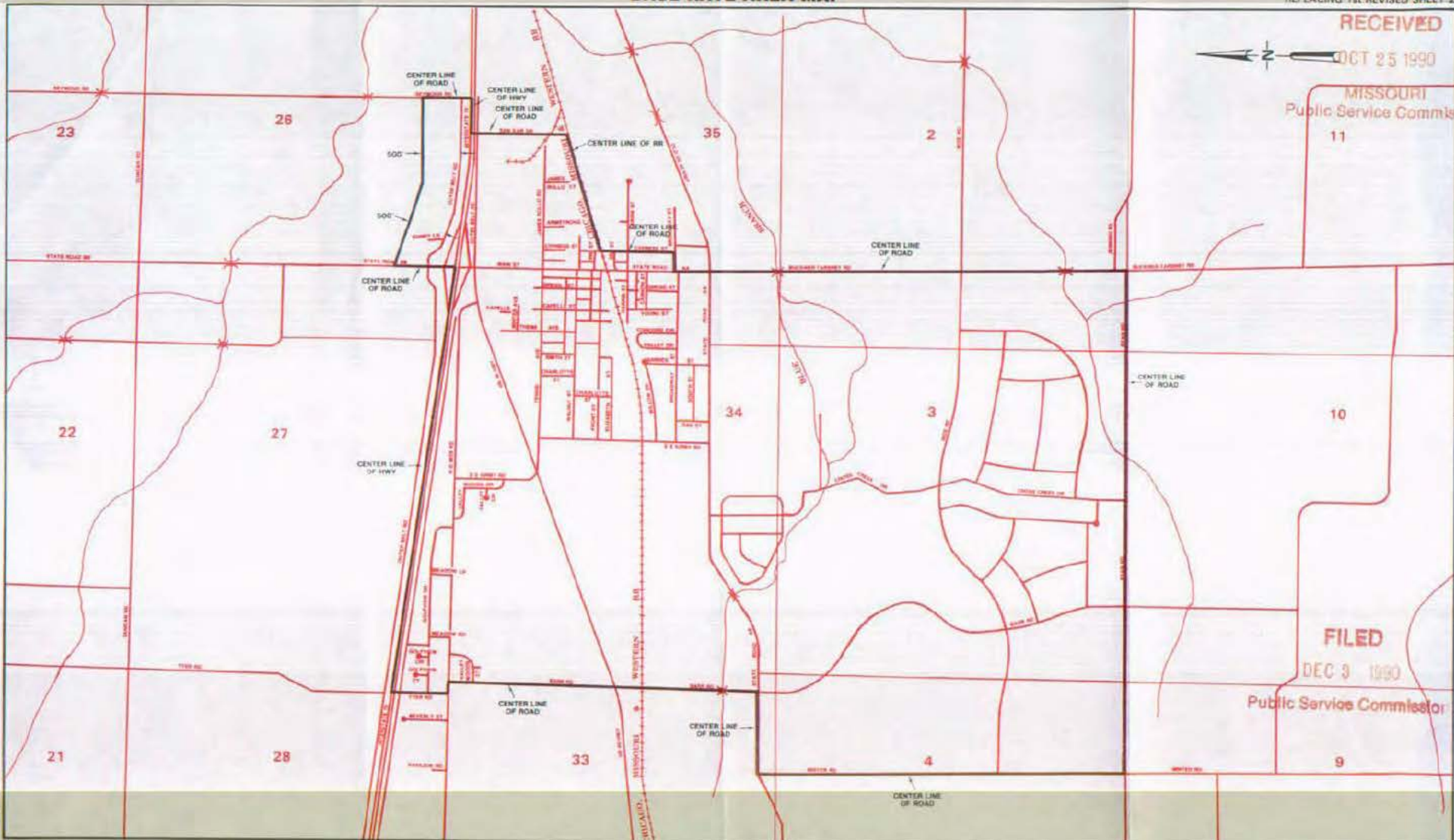
2nd REVISED SHEET 2
REPLACING 1st REVISED SHEET 2

RECEIVED

OCT 25 1990

MISSOURI
Public Service Commission

11



FILED

DEC 3 1990

Public Service Commission

9

NOV 0 1 1990

R30W | R29W
By R. D. BARRON, PRESIDENT, MISSOURI DIVISION
Southwestern Bell Telephone Company
St. Louis, Missouri

Effective: DEC 0 3 1990

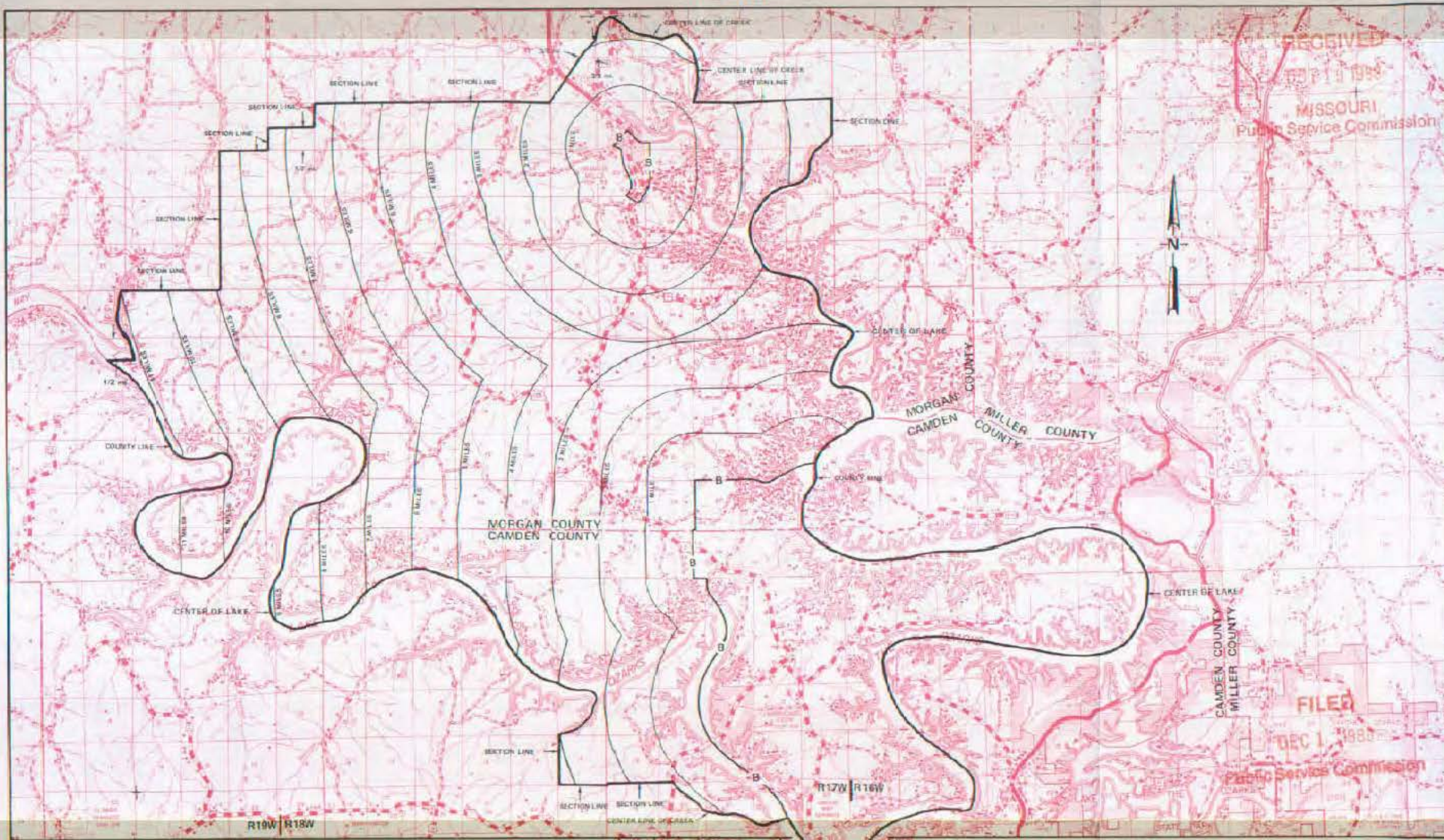
Issued: _____

NO SUPPLEMENT TO THIS TARIFF WILL BE ISSUED EXCEPT FOR THE PURPOSE OF CANCELING THIS TARIFF.

P. S. C. Mo. No. 17 EXCHANGE & BASE RATE AREA MAP

Gravois Mills, Missouri

6th REVISED SHEET 3
REPLACING 5th REVISED SHEET 3



By R. D. BARRON, President, Missouri Division
Southwestern Bell Telephone Company
St. Louis, Missouri

Issued: November 1, 1988

Effective: December 1, 1988

NO SUPPLEMENT TO THIS TARIFF WILL BE ISSUED EXCEPT FOR THE PURPOSE OF CANCELING THIS TARIFF.

P. S. C. Mo. No. 17

BASE RATE AREA MAP

Gray Summit, Missouri
RECEIVED
9th REVISED SHEET 2
REPLACING 3rd REVISED SHEET 2

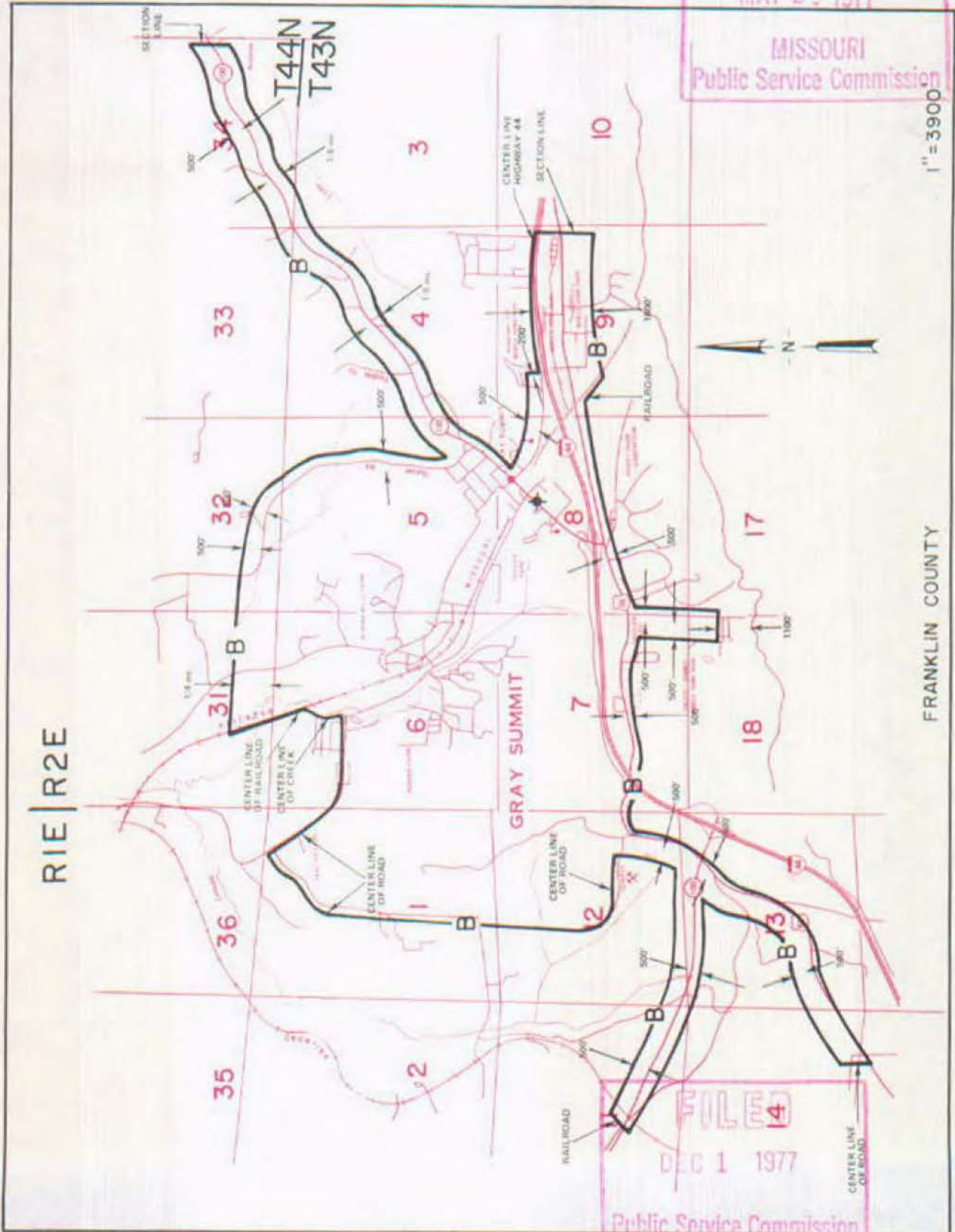
MAY 20 1977

MISSOURI
Public Service Commission

1" = 3900'

FRANKLIN COUNTY

R1E | R2E



RECEIVED
14
DEC 1 1977
Public Service Commission

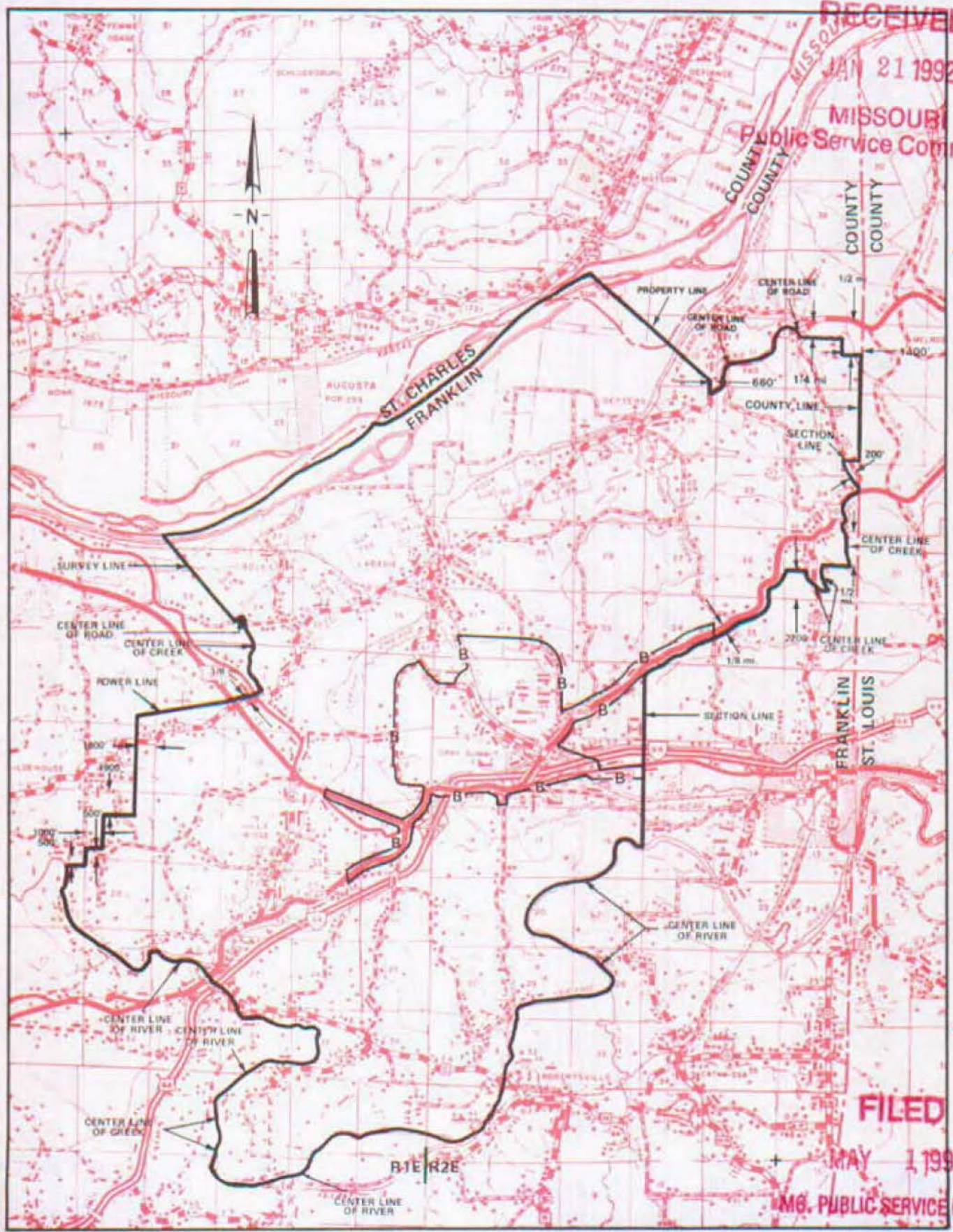
NO SUPPLEMENT TO THIS TARIFF WILL BE ISSUED EXCEPT FOR THE PURPOSE OF CANCELING THIS TARIFF.

P. S. C. Mo. No. 17

Gray Summit, Missouri

EXCHANGE AREA MAP

11th REVISED SHEET 3
REPLACING 10th REVISED SHEET 3



RECEIVED
JAN 21 1992
MISSOURI
Public Service Commission

T45N
T44N

T44N
T43N

T43N
T42N

FILED
MAY 1 1992
MO. PUBLIC SERVICE COMM.

JAN 23 1992

By **R. D. BARRON**, President, Missouri Division
Southwestern Bell Telephone Company

R2E | R3E
MAY 01 1992

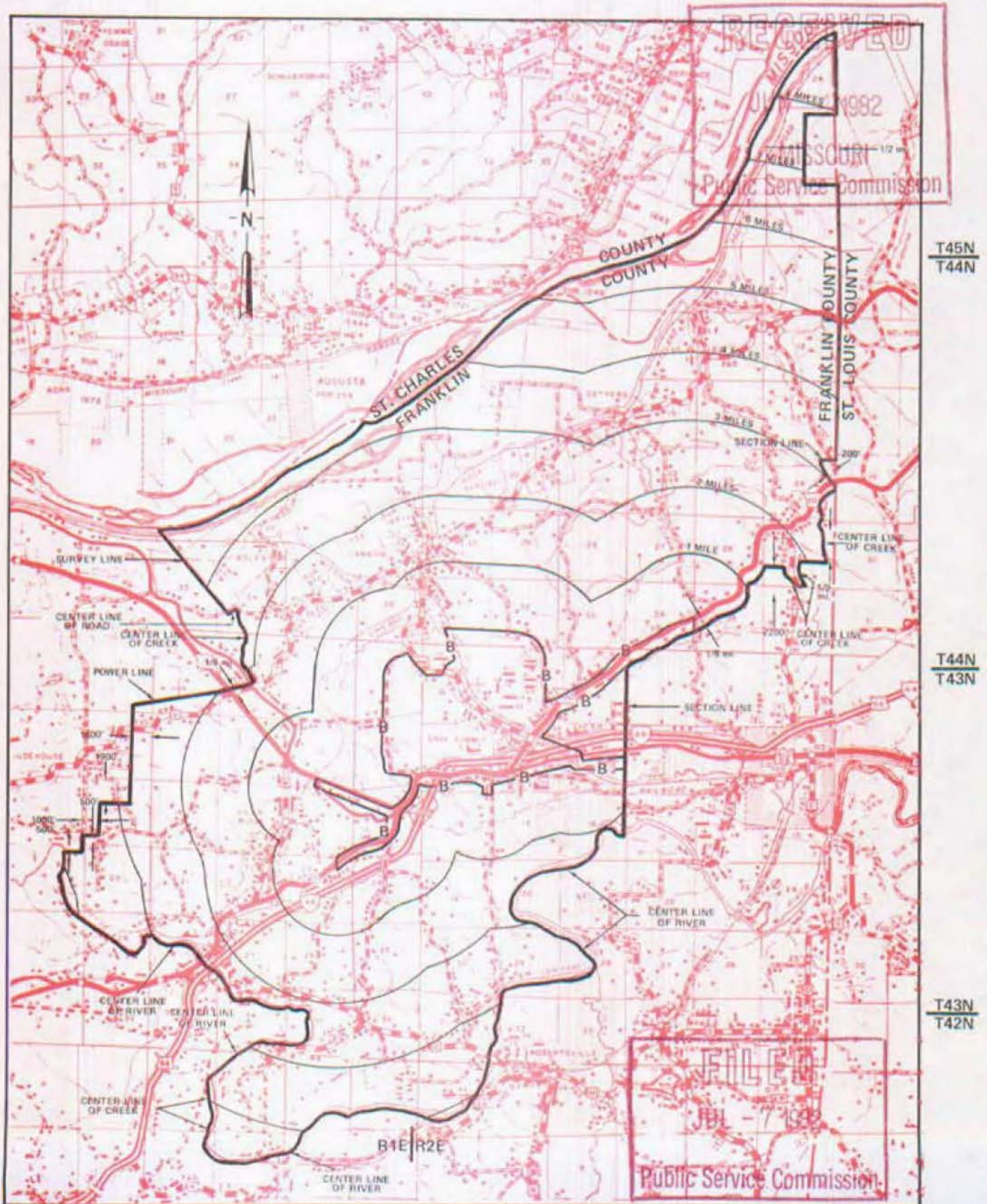
NO SUPPLEMENT TO THIS TARIFF WILL BE ISSUED EXCEPT FOR THE PURPOSE OF CANCELING THIS TARIFF.

P. S. C. Mo. No. 17

Gray Summit, Missouri

EXCHANGE AREA MAP

10th REVISED SHEET 3 REPLACING 9th REVISED SHEET 3



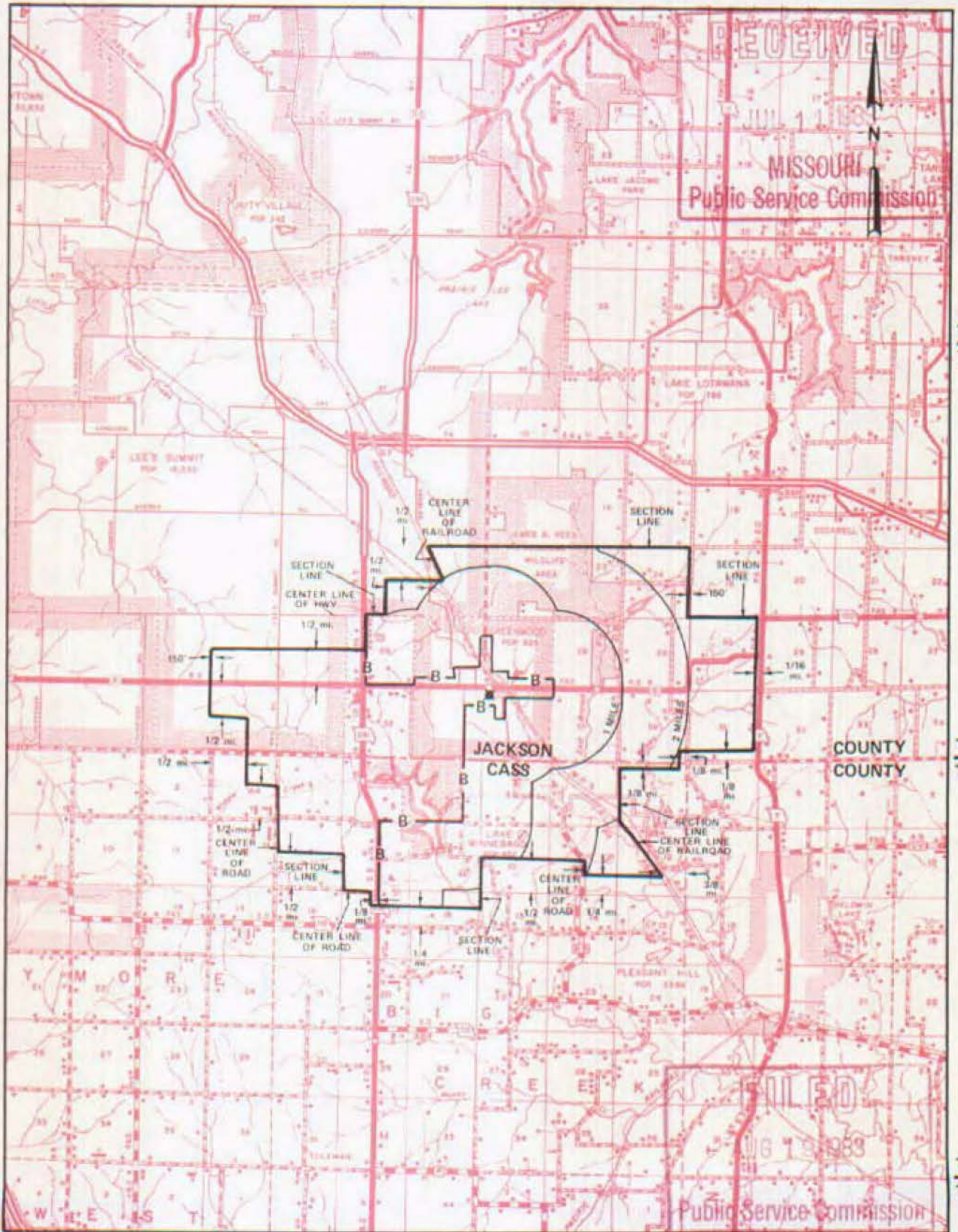
By R. D. BARRON, Vice President, Missouri Southwestern Bell Telephone Company

R2E | R3E

NO SUPPLEMENT TO THIS TARIFF WILL BE ISSUED EXCEPT FOR THE PURPOSE OF CANCELING THIS TARIFF.

P. S. C. Mo. No. 17 EXCHANGE AREA MAP

Greenwood, Missouri
7th REVISED SHEET 3
REPLACING 6th REVISED SHEET 3



T48N
T47N

T47N
T46N

T46N
T45N

R32W | R31W | R31W | R30W

By R. D. BARRON, Vice President, Missouri
Southwestern Bell Telephone Company
St. Louis, Missouri

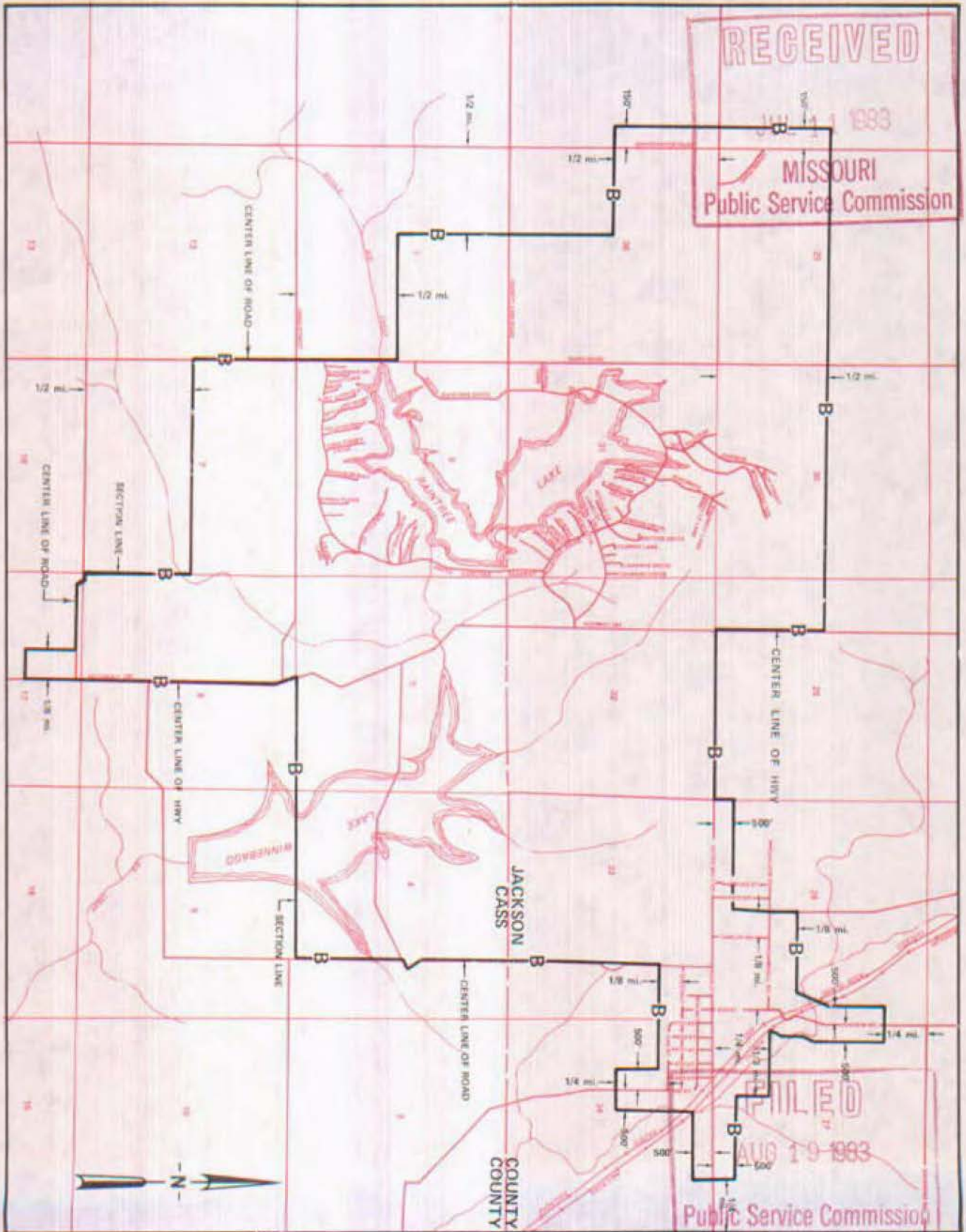
NO SUPPLEMENT TO THIS TARIFF WILL
BE ISSUED EXCEPT FOR THE PURPOSE OF
CANCELING THIS TARIFF.

P. S. C. Mo. No. 17

Greenwood, Missouri

3rd REVISED SHEET 2
REPLACING 2nd REVISED SHEET 2

BASE RATE AREA MAP



By R. D. BARRON, Vice President, Missouri
Southwestern Bell Telephone Company
St. Louis, Missouri

Issued: JULY 12, 1983

Effective: AUGUST 19, 1983