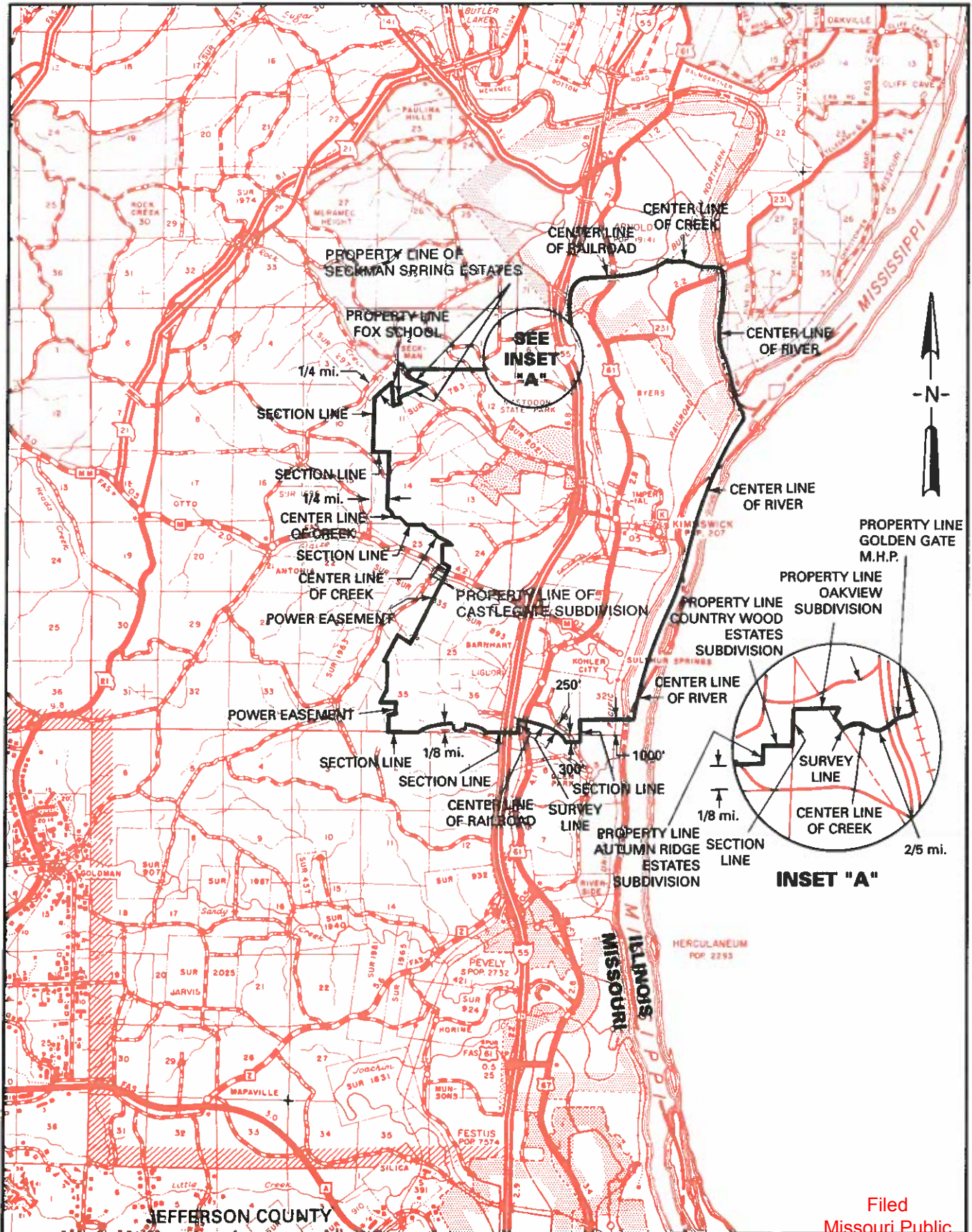


EXCHANGE AREA MAP

Replacing 6th Revised Sheet 3



R4E | R5E

R5E | R6E

Issued: November 17, 2008

By DAVID NICHOLS, President – Missouri
St. Louis, Missouri

Filed
Missouri Public
Service Commission
JI-2009-0374
Effective: December 17, 2008

NO SUPPLEMENT TO THIS TARIFF WILL BE ISSUED EXCEPT FOR THE PURPOSE OF CANCELING THIS TARIFF.

P. S. C. Mo. No. 17

Imperial, Missouri

6th REVISED SHEET 2
REPLACING 5th REVISED SHEET 2

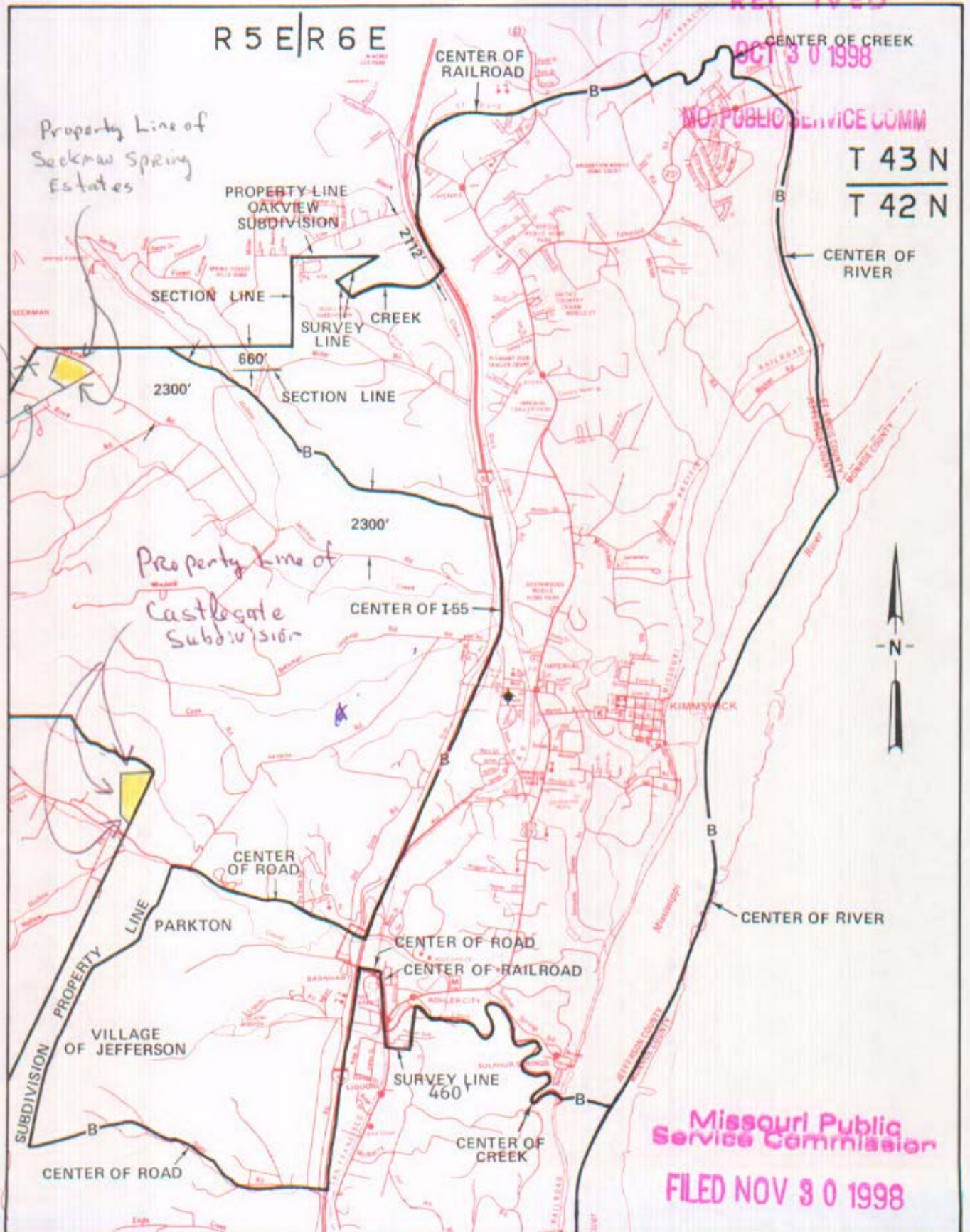
BASE RATE AREA MAP

RECEIVED

OCT 30 1998

NO PUBLIC SERVICE COMM

T 43 N
T 42 N



Missouri Public Service Commission

FILED NOV 30 1998

OCT 30 1998

~~AUG 21 1981~~

Priscilla Hilla-Ardoin

By R. R. SHOOKLEY, Vice President, Missouri

NOV 30 1998

~~SEP 21 1981~~

Issued: _____

Southwestern Bell Telephone
St. Louis, Missouri

Effective: _____

INDEPENDENCE

SEE

KANSAS CITY DISTRICT EXCHANGE

under Kansas City

Effective July 1, 1938