

NO SUPPLEMENT TO THIS TARIFF WILL
BE ISSUED EXCEPT FOR THE PURPOSE OF
CANCELING THIS TARIFF.

P. S. C. Mo. No. 17

Jackson, Missouri

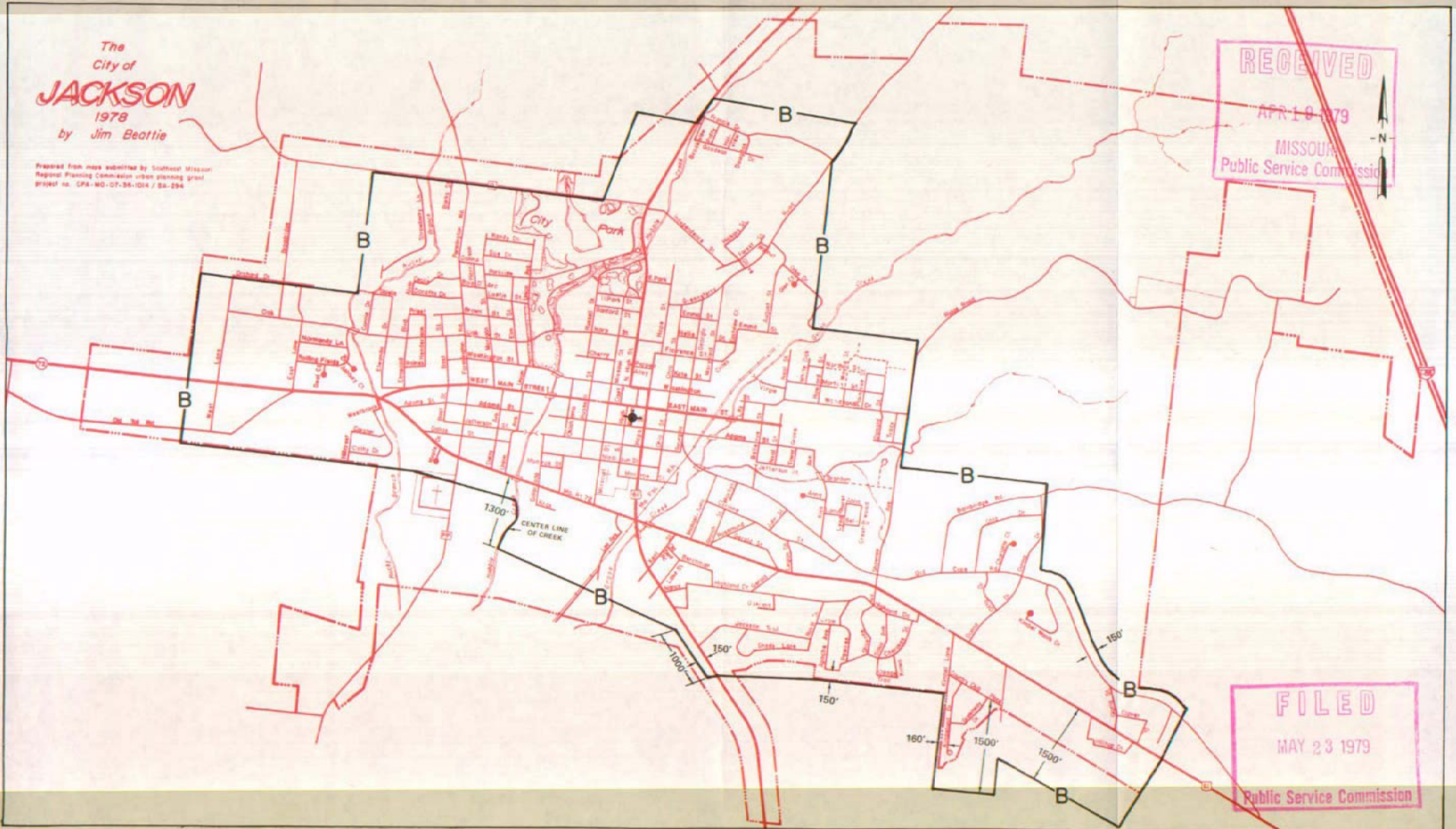
2nd REVISED SHEET 2
REPLACING 1st REVISED SHEET 2

BASE RATE AREA MAP

The
City of
JACKSON
1978
by Jim Beattie

Prepared from maps submitted by Southeast Missouri
Regional Planning Commission urban planning grant
Project no. CPA-MO-07-34-1014 / SA-294

RECEIVED
APR 19 1979
MISSOURI
Public Service Commission



FILED
MAY 23 1979
Public Service Commission

By R. R. SHOCKLEY, Vice President, Missouri
Southwestern Bell Telephone Company
St. Louis, Missouri

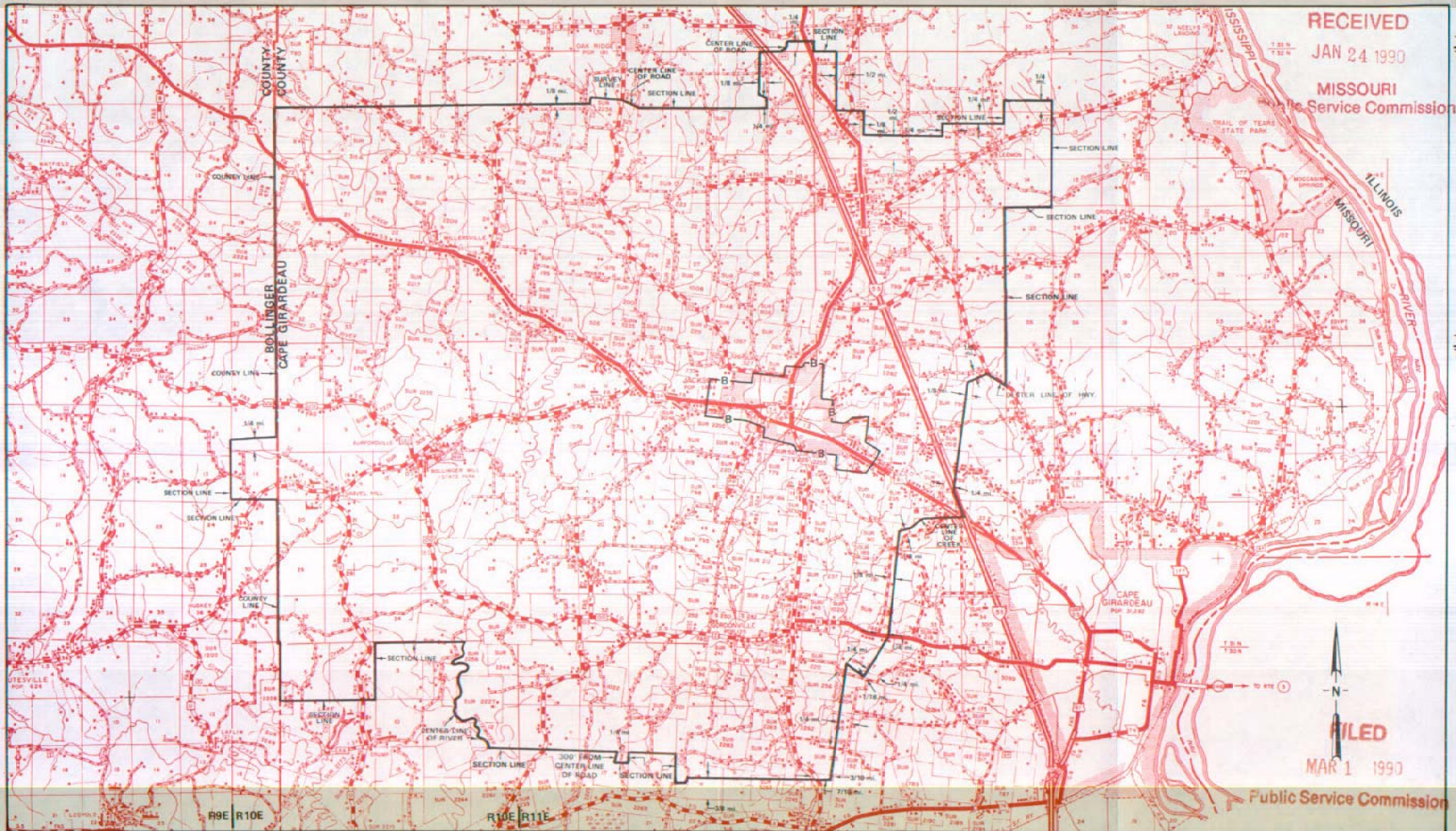
Issued: APRIL 23, 1979

Effective: MAY 23, 1979

NO SUPPLEMENT TO THIS TARIFF WILL BE ISSUED EXCEPT FOR THE PURPOSE OF CANCELING THIS TARIFF.

P. S. C. Mo. No. 17
EXCHANGE AREA MAP

Jackson, Missouri
9th REVISED SHEET 3
REPLACING 8th REVISED SHEET 3



RECEIVED
JAN 24 1990
MISSOURI
Public Service Commission

FILED
MAR 1 1990
Public Service Commission

T32N
T31N
T31N
T30N

By R. D. BARRON, President, Missouri Division
Southwestern Bell Telephone Company
St. Louis, Missouri

Issued: January 29, 1990

Effective: March 1, 1990

R11E R12E

R12E R13E

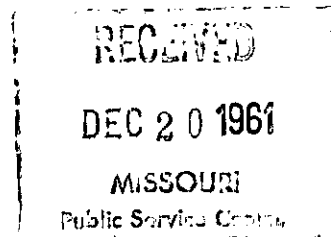
R13E R14E

No supplement to this tariff will be issued except for the purpose of canceling this tariff.

P.S.C. Mo. No. 17

JAMES RIVER, MISSOURI
2ND REVISED SHEET 3
REPLACING 1ST REVISED SHEET 3

This exchange is included in the Nixa exchange.
For all rates and charges refer to the Nixa exchange



FILED

JAN 19 1962

PUBLIC SERVICE COMMISSION

Issued: December 19, 1961

Effective: January 19, 1962

By F. B. HUNT, Vice President and General Manager
Southwestern Bell Telephone Company
St. Louis, Missouri

SBC PSC MO #17
Jasper, Missouri
1st Revised Sheet 2
Replacing Original Sheet 2

Non-Scannable Map

(Is viewable in the Data Center
200 Madison Street, 1st Floor
Jefferson City MO)

NO SUPPLEMENT TO THIS TARIFF WILL BE ISSUED EXCEPT FOR THE PURPOSE OF CANCELING THIS TARIFF.

P. S. C. Mo. No. 17

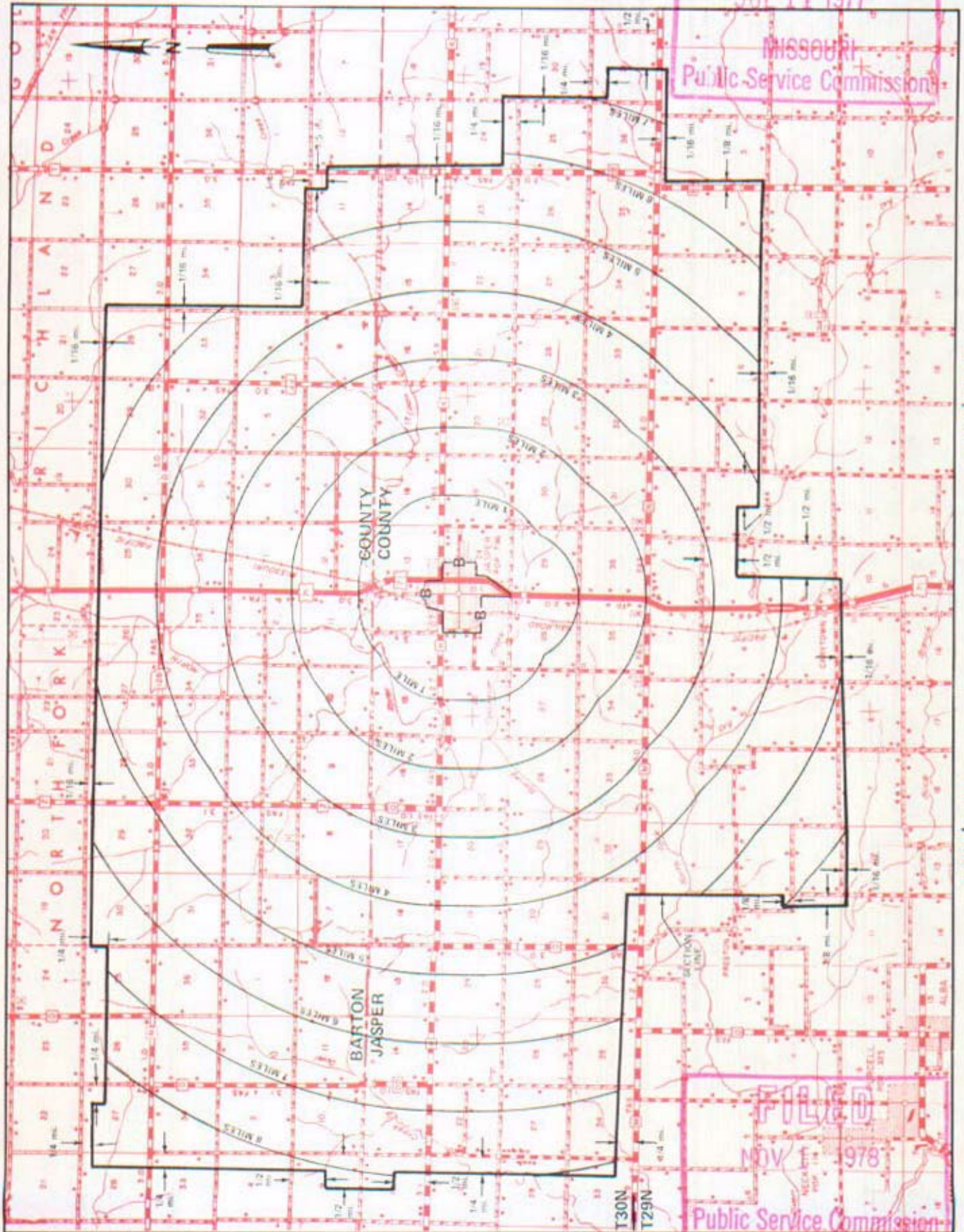
EXCHANGE AREA MAP

Jasper, Missouri

RECEIVED
6th REVISED SHEET 3
REPLACING 5th REVISED SHEET 3

JUL 11 1977

MISSOURI
Public Service Commission



T31N
T30N

By R. R. SHOCKLEY, Vice President, Missouri
Southwestern Bell Telephone Company

FILED
NOV 1 1978
Public Service Commission

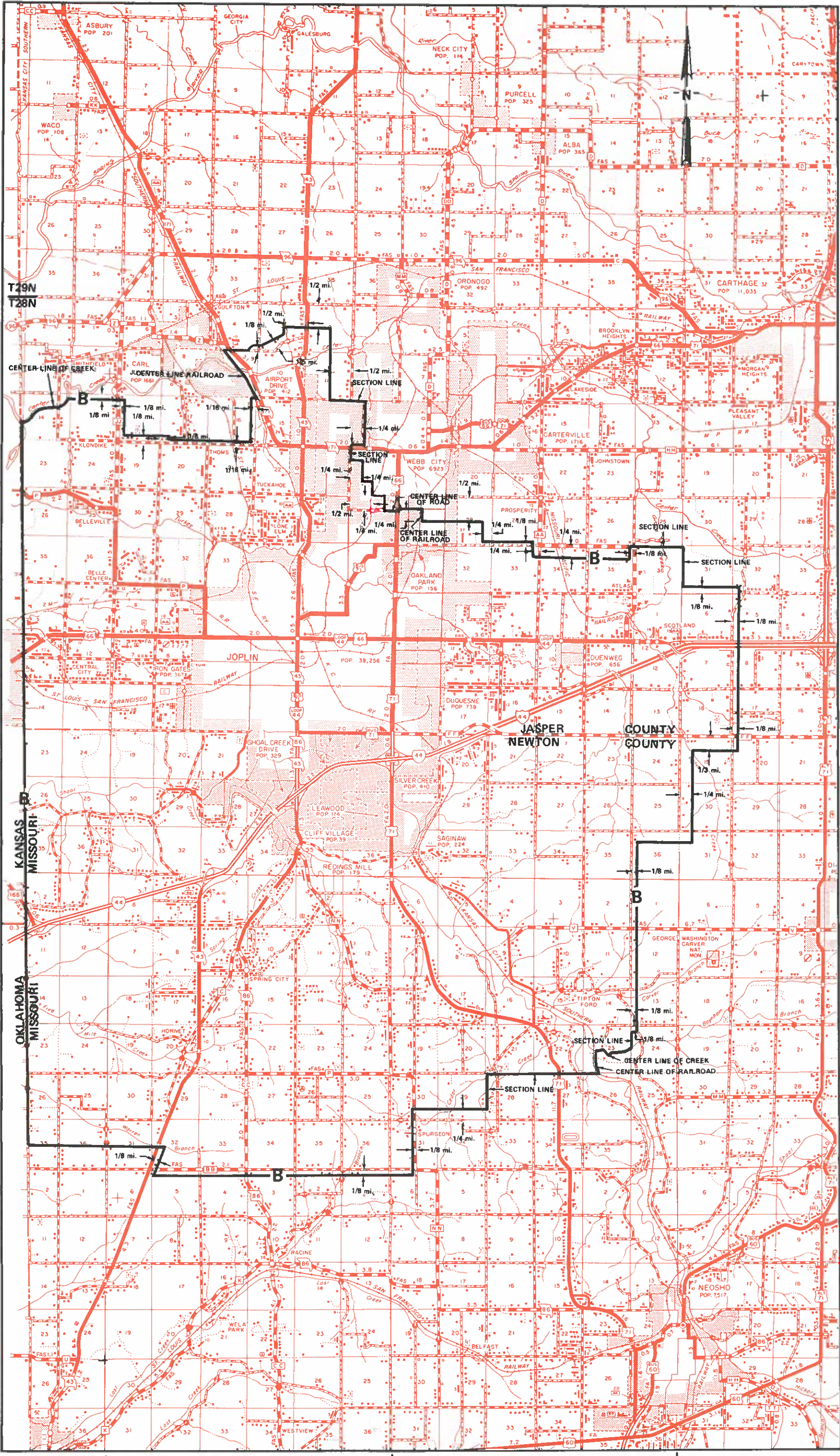
NOV 1 - 1978

NO SUPPLEMENT TO THIS TARIFF WILL BE ISSUED EXCEPT FOR THE PURPOSE OF CANCELING THIS TARIFF.

P. S. C. Mo. No. 17
EXCHANGE AREA MAP

Filed
Missouri Public
Service Commission
JI-2012-0133

Joplin, Missouri
12th Revised Sheet 3
Replacing 11th Revised Sheet 3



Issued: September 29, 2011

By JOHN SONDRAG, President - Missouri
St. Louis, Missouri

T28N
T27N

T27N
T26N

Effective: October 29, 2011

R34W | R33W

R33W | R32W

R32W | R31W