

No supplement to this tariff will be issued except for the purpose of canceling this tariff.

KANSAS CITY METROPOLITAN EXCHANGE
5th Revised Sheet 1
Replacing 4th Revised Sheet 1

RECEIVED

SOUTHWESTERN BELL TELEPHONE COMPANY
METROPOLITAN EXCHANGE TARIFF
Superseding All Tariffs Previously Issued

SEP 30 1993

I. Kansas City Metropolitan Exchange Service

MO. PUBLIC SERVICE COMM.

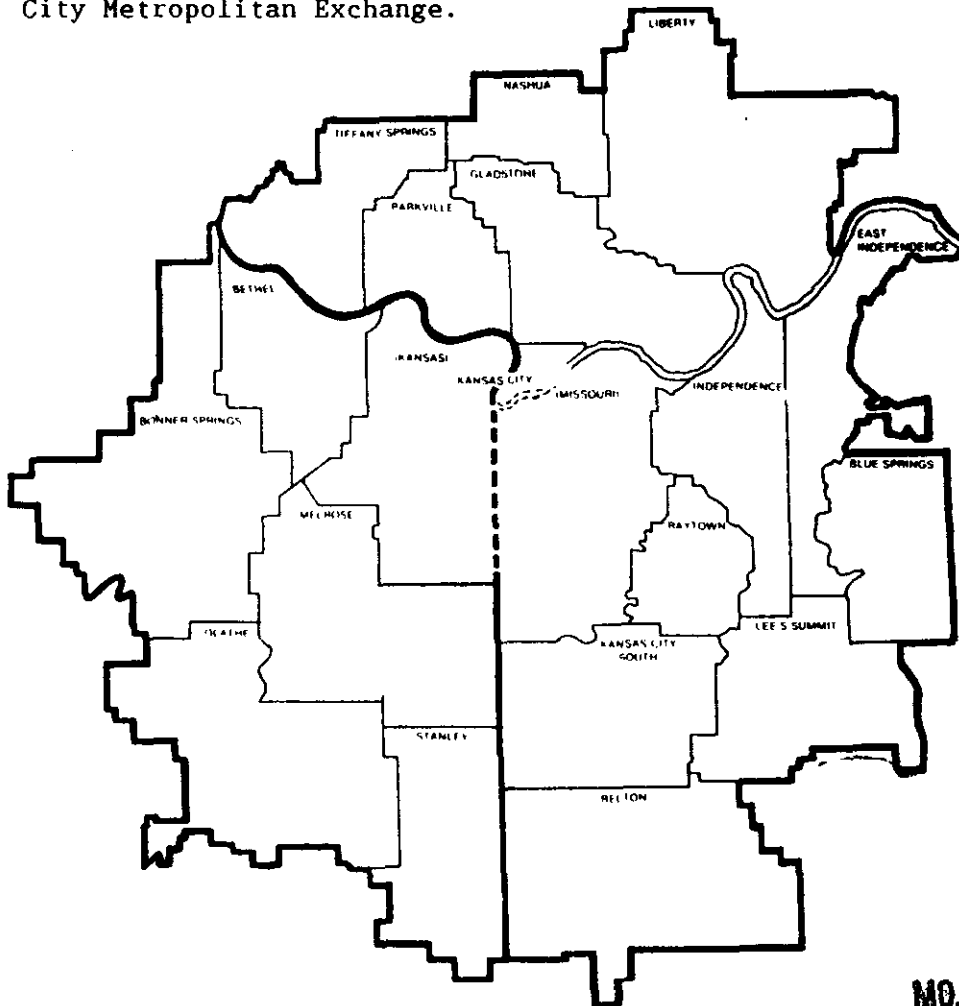
A. General

In the Kansas City Metropolitan Exchange there is a Principal Kansas City Zone, a group of Metropolitan Calling Area-1 (MCA-1) Zones and a group of Metropolitan Calling Area-2 (MCA-2) Zones. The rates specified for each zone in the Metropolitan Exchange entitle the customer to local service within the primary service area specified for that zone.

(CT)(RT)
(C)(CT)(RT)

B. Zones Included in the Metropolitan Exchange

The following schematic diagram shows the zones included in the Kansas City Metropolitan Exchange.



FILED

NOV 2 1993
92-306
MO. PUBLIC SERVICE COMM.

Issued: OCT 01 1993

Effective: NOV 02 1993

By D. R. KAESHOFER, Division Manager-Regulatory & Industry Relations
Southwestern Bell Telephone Company
St. Louis, Missouri

SBC PSC MO #17
Kansas City
Metropolitan Exchange
Belton Zone
7th Revised Sheet 6
Replacing 6th Revised Sheet 6

Non-Scannable Map

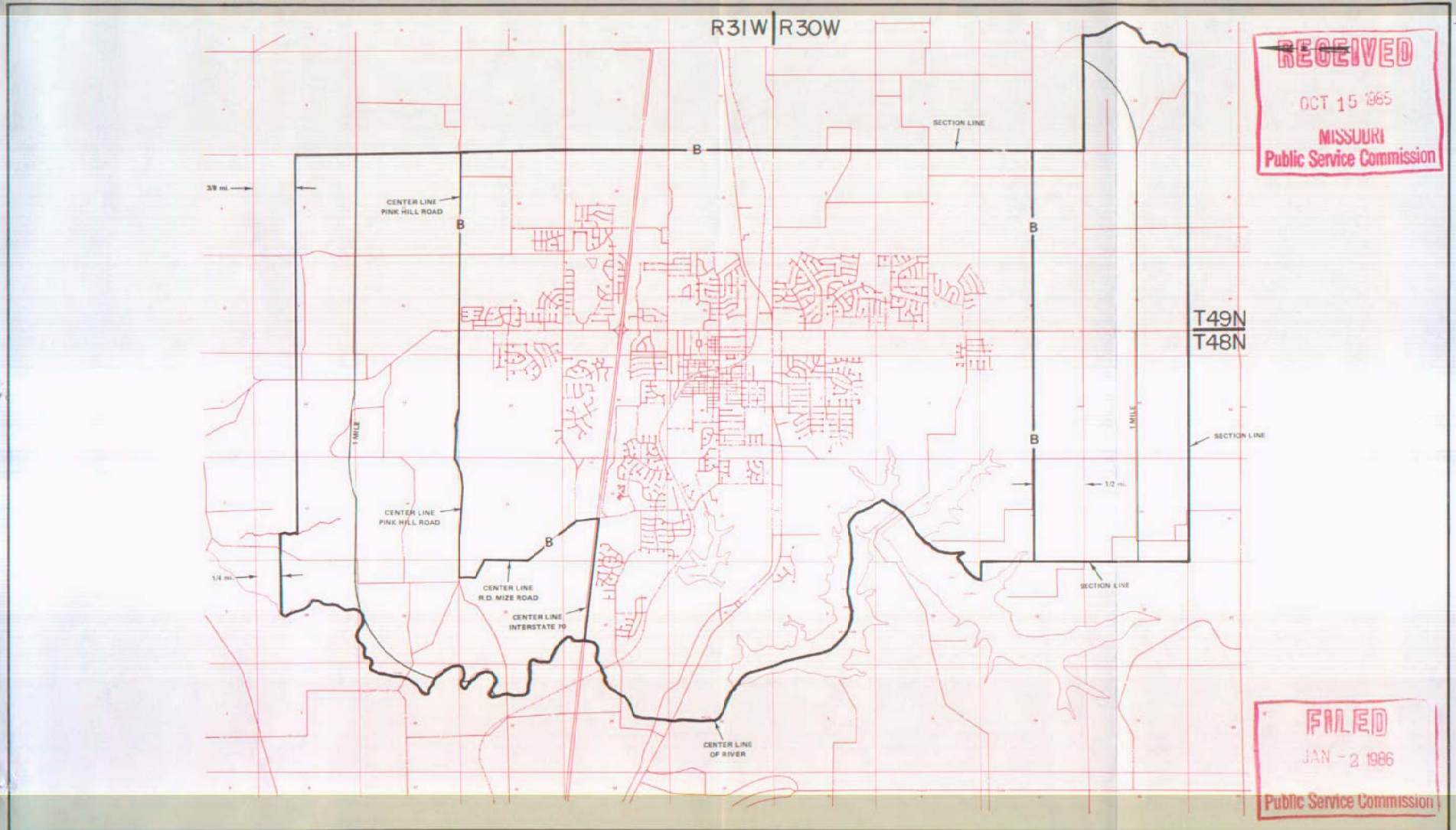
(Is viewable in the Data Center
200 Madison Street, 1st Floor
Jefferson City MO)

NO SUPPLEMENT TO THIS TARIFF WILL
BE ISSUED EXCEPT FOR THE PURPOSE OF
CANCELING THIS TARIFF.

P. S. C. Mo. No. 17

Kansas City Metropolitan Exchange
BLUE SPRINGS ZONE & BASE RATE AREA
1ST REVISED SHEET 6A
REPLACING ORIGINAL SHEET 6A

ZONE AND BASE RATE AREA MAP



By R.D. BARRON, PRESIDENT—MISSOURI DIVISION
Southwestern Bell Telephone Company
St. Louis, Missouri

Issued: October 14, 1985

Effective: January 2, 1986

SBC PSC MO #17
Kansas City
Metropolitan Exchange
East Independence Zone
6th Revised Sheet 7
Replacing 5th Revised Sheet 7

Non-Scannable Map

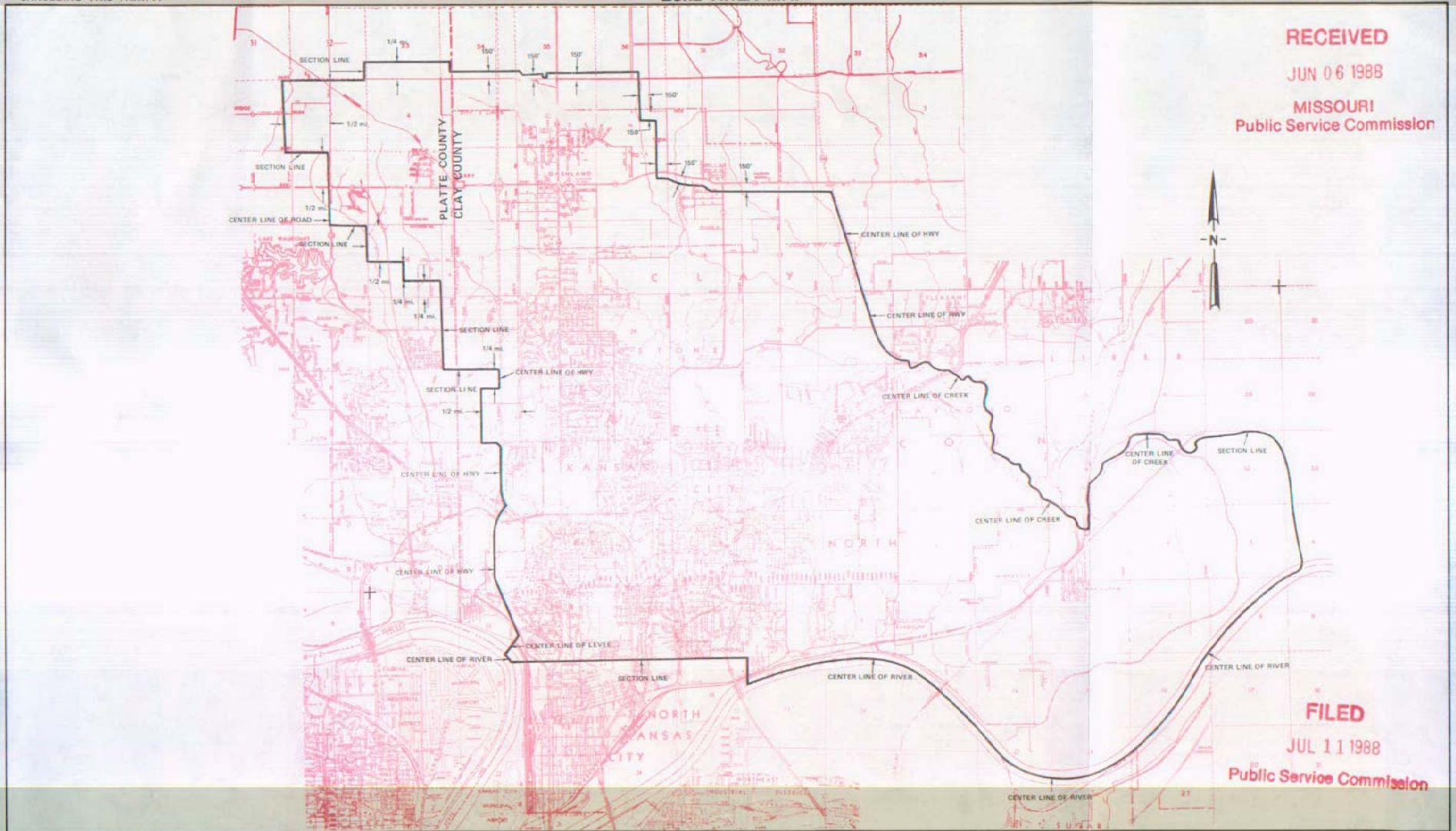
(Is viewable in the Data Center
200 Madison Street, 1st Floor
Jefferson City MO)

NO SUPPLEMENT TO THIS TARIFF WILL
BE ISSUED EXCEPT FOR THE PURPOSE OF
CANCELING THIS TARIFF.

P. S. C. Mo. No. 17
ZONE AREA MAP

Kansas City Metropolitan Exchange
GLADSTONE ZONE
12th REVISED SHEET 8
REPLACING 11th REVISED SHEET 8

RECEIVED
JUN 06 1988
MISSOURI
Public Service Commission



FILED
JUL 11 1988
Public Service Commission

Issued: JUNE 10, 1988

By R.D. BARRON, PRESIDENT—MISSOURI DIVISION
Southwestern Bell Telephone Company
St. Louis, Missouri

Effective: JULY 11, 1988

SBC PSC MO #17
Kansas City
Metropolitan Exchange
Independence Zone
9th Revised Sheet 9
Replacing 8th Revised Sheet 9

Non-Scannable Map

(Is viewable in the Data Center
200 Madison Street, 1st Floor
Jefferson City MO)

SBC PSC MO #17
Kansas City
Metropolitan Exchange
Kansas City Zone Area
2nd Revised Sheet 10
Replacing 1st Revised Sheet 10

Non-Scannable Map

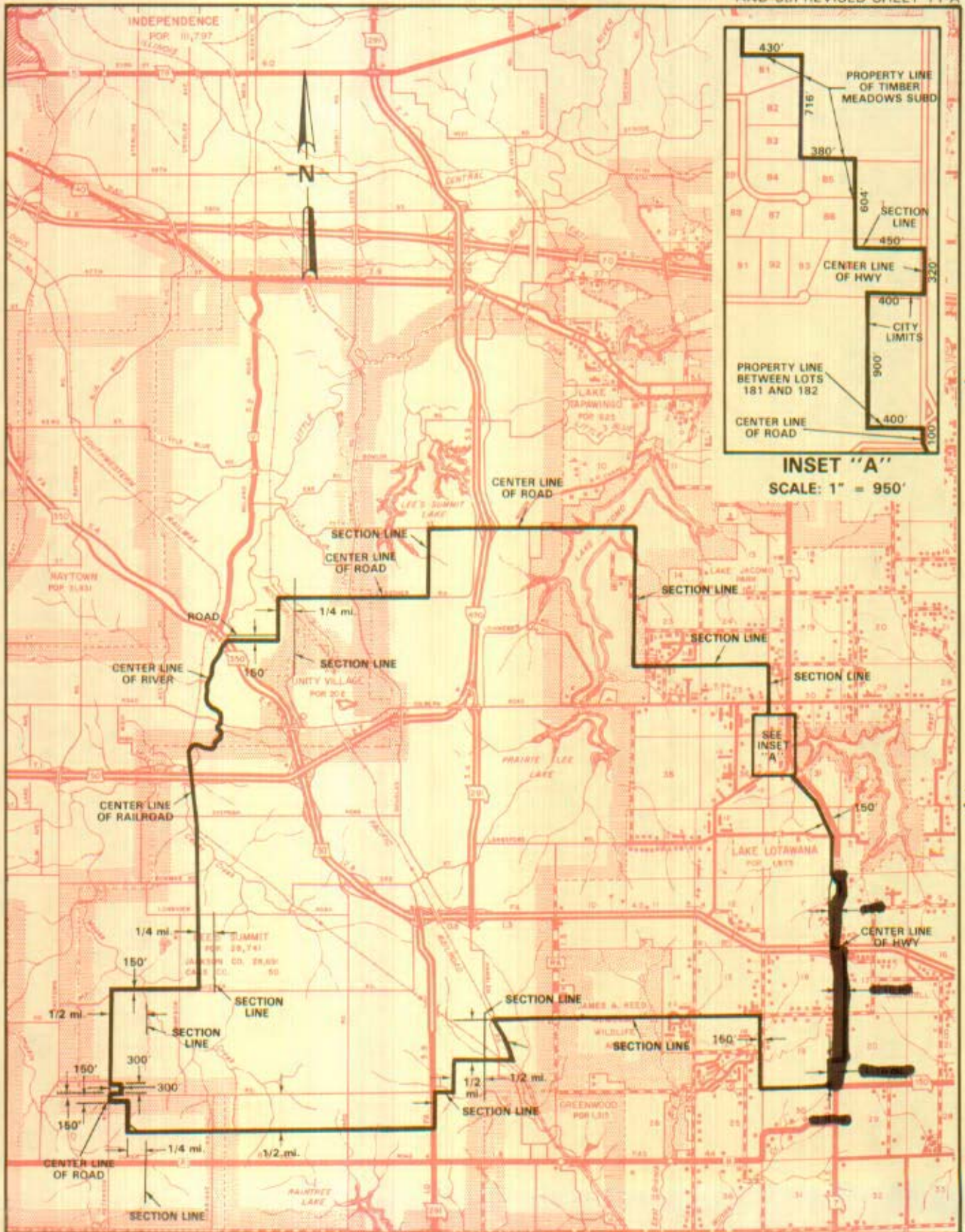
(Is viewable in the Data Center
200 Madison Street, 1st Floor
Jefferson City MO)

NO SUPPLEMENT TO THIS TARIFF WILL BE ISSUED EXCEPT FOR THE PURPOSE OF CANCELING THIS TARIFF.

Kansas City
Metropolitan Exchange
LEE'S SUMMIT ZONE

**P. S. C. Mo. No. 17
ZONE AREA MAP**

Should be 10th
9th
REPLACING 7th REVISIED SHEET 11-B
AND 5th REVISIED SHEET 11-A



T49N
T48N

T48N
T47N

Issued: January 19, 2007

By CINDY BRINKLEY, President - Missouri

Effective: February 18, 2007

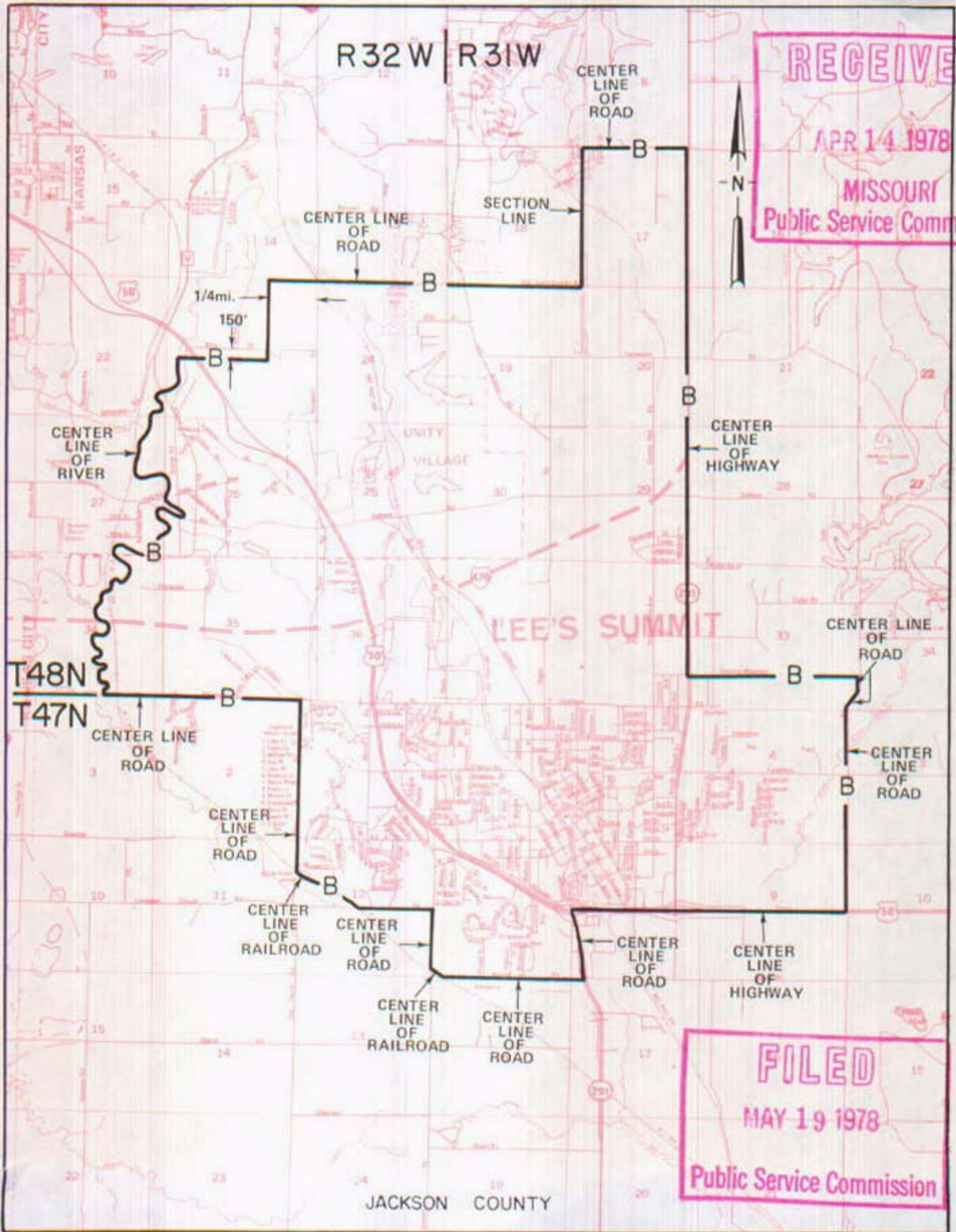
NO SUPPLEMENT TO THIS TARIFF WILL BE ISSUED EXCEPT FOR THE PURPOSE OF CANCELING THIS TARIFF.

P. S. C. Mo. No. 17

Kansas City Metropolitan Exchange
LEE'S SUMMIT ZONE

BASE RATE AREA MAP

5th REVISED SHEET 11-A
REPLACING 4th REVISED SHEET 11-A



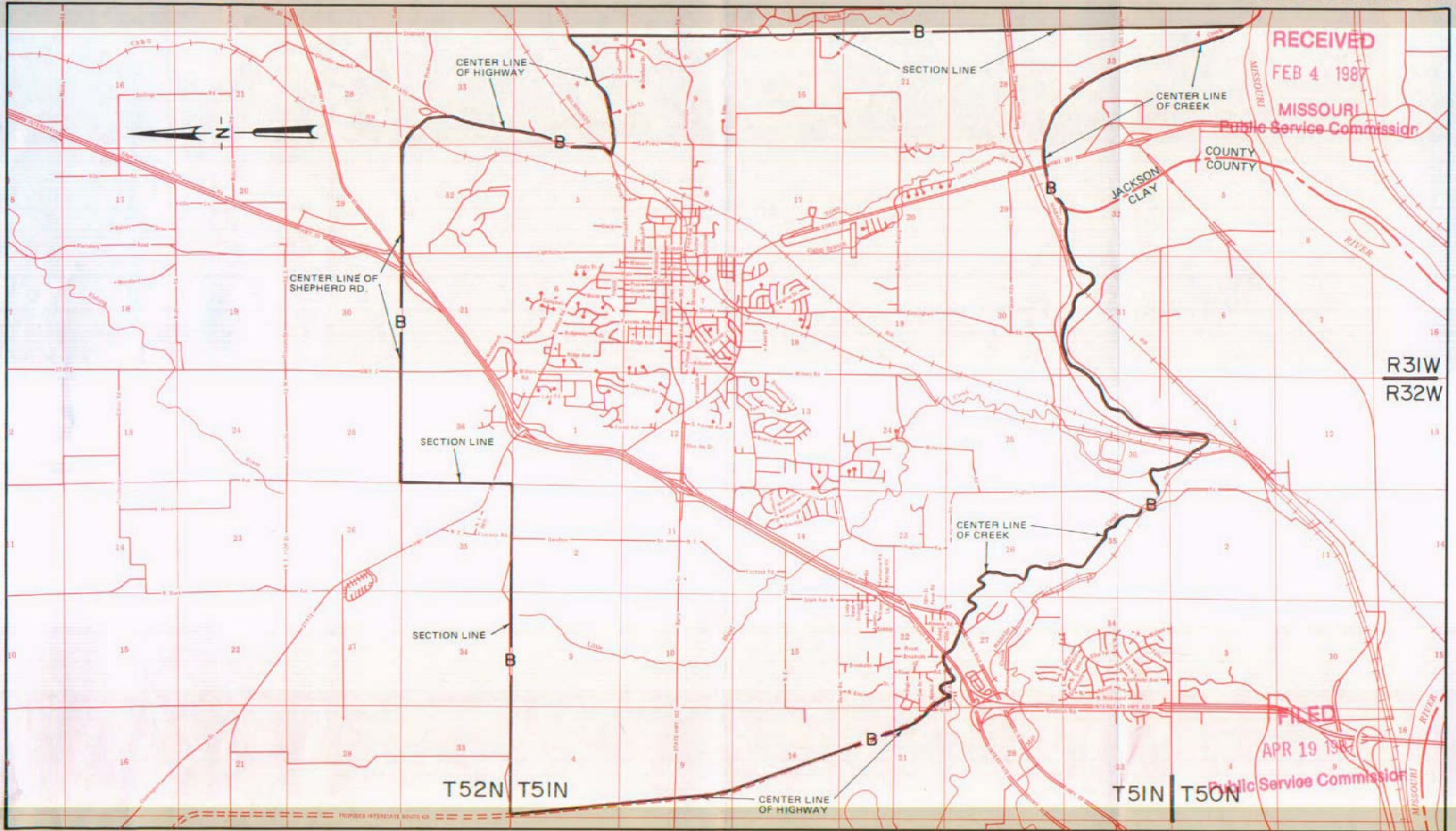
By R. R. SHOCKLEY, Vice President, Missouri
Southwestern Bell Telephone Company
St. Louis, Missouri

FILE # 7800 ⁰³³

NO SUPPLEMENT TO THIS TARIFF WILL BE ISSUED EXCEPT FOR THE PURPOSE OF CANCELING THIS TARIFF.

P. S. C. Mo. No. 17
BASE RATE AREA MAP

Kansas City
Metropolitan Exchange
LIBERTY ZONE
4th REVISED SHEET 12-A
REPLACING 3rd REVISED SHEET 12-A



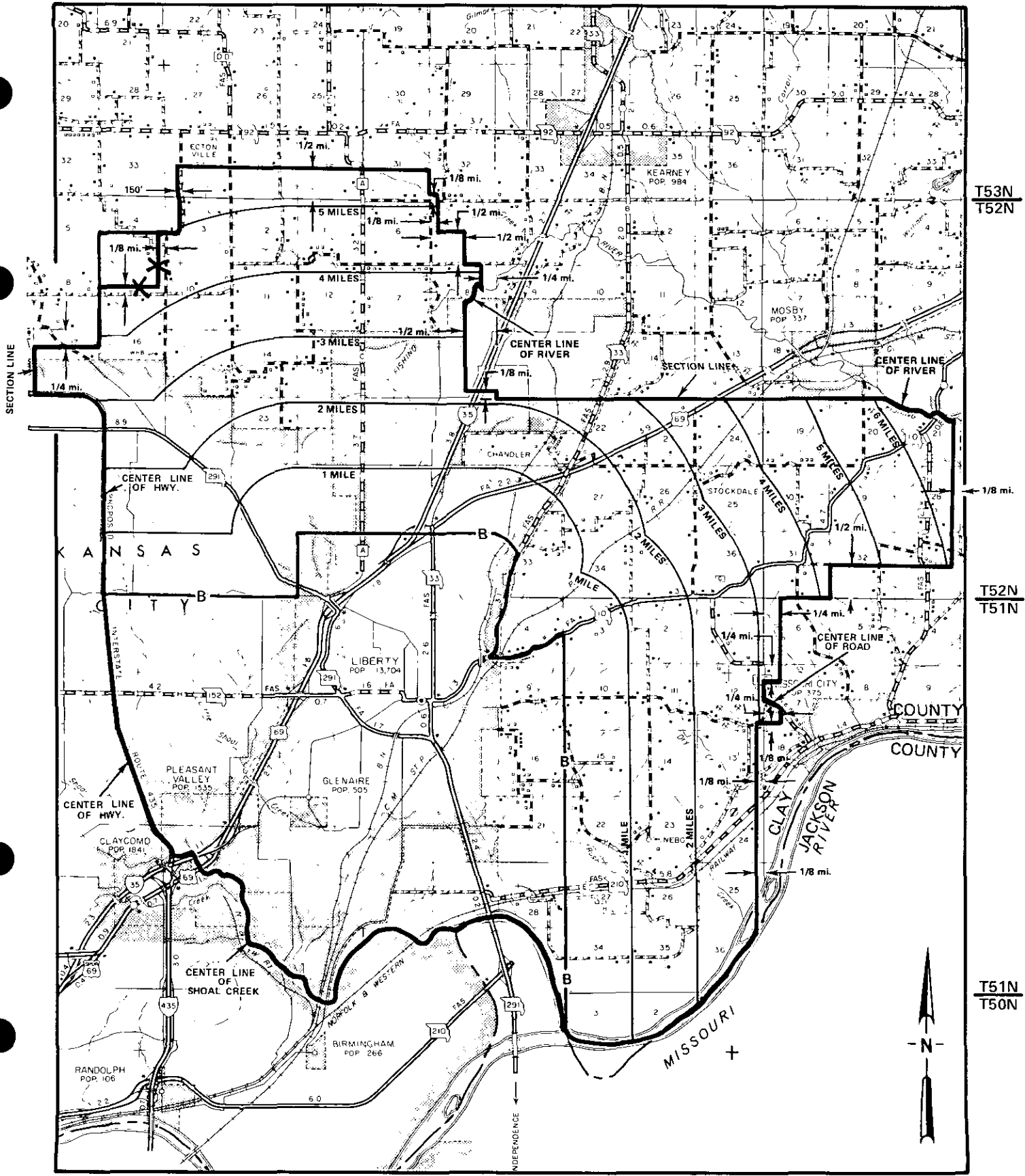
By R.D. BARRON, PRESIDENT—MISSOURI DIVISION
Southwestern Bell Telephone Company
St. Louis, Missouri

Issued: February 6, 1987

Effective: April 19, 1987

EXCHANGE AREA MAP

9th Revised Sheet 12-B
Replacing 8th Revised Sheet 12-B



T53N
T52N

T52N
T51N

T51N
T50N

R32W/R31W

R31W/R30W

Issued: July 12, 2007

By CINDY BRINKLEY, President - Missouri
St. Louis, Missouri

FILED Effective: August 11, 2007

Missouri Public
Service Commission

P. S. C. Mo. No. 17

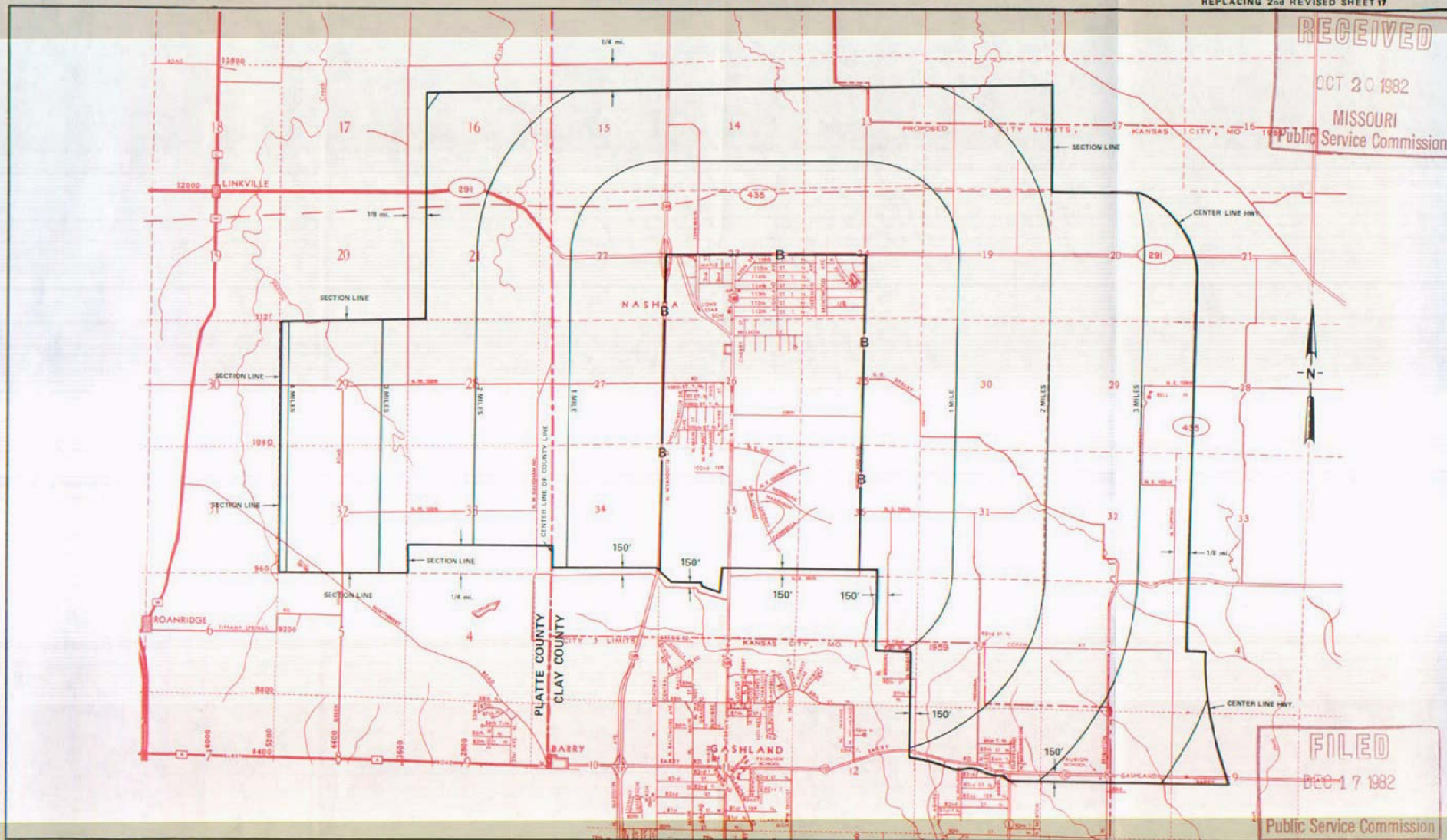
Kansas City Metropolitan Exchange

NO SUPPLEMENT TO THIS TARIFF WILL BE ISSUED EXCEPT FOR THE PURPOSE OF CANCELING THIS TARIFF.

ZONE AND BASE RATE AREA MAP

NASHUA ZONE AND BASE RATE AREA
3rd REVISED SHEET 17
REPLACING 2nd REVISED SHEET 17

RECEIVED
OCT 20 1982
MISSOURI
Public Service Commission



FILED
DEC 17 1982
Public Service Commission

Issued: OCTOBER 22, 1982

By R. D. BARRON, Vice President, Missouri
Southwestern Bell Telephone Company
St. Louis, Missouri

Effective: DECEMBER 17, 1982

NO SUPPLEMENT TO THIS TARIFF WILL BE ISSUED EXCEPT FOR THE PURPOSE OF CANCELING THIS TARIFF.

P. S. C. Mo. No. 17

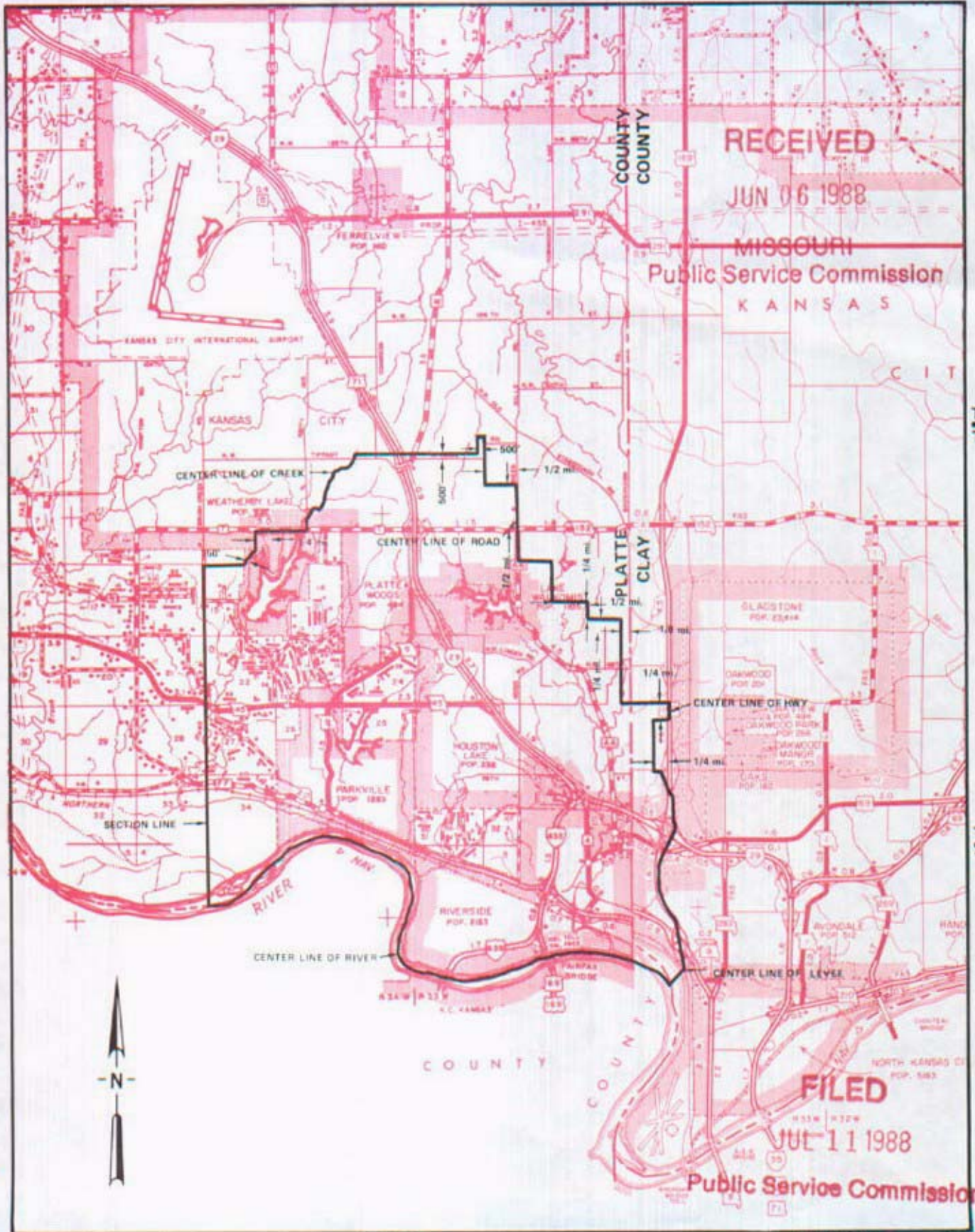
ZONE AREA MAP

Kansas City Metropolitan Exchange

PARKVILLE ZONE

11th REVISED SHEET 13

REPLACING 10th REVISED SHEET 13



T52N
T51N

T51N
T50N

R34W | R33W

R33W | R32W

By R. D. BARRON, President, Missouri Division
Southwestern Bell Telephone Company
St. Louis, Missouri

Issued: JUNE 10, 1988

Effective: JULY 11, 1988

NO SUPPLEMENT TO THIS TARIFF WILL BE ISSUED EXCEPT FOR THE PURPOSE OF CANCELING THIS TARIFF.

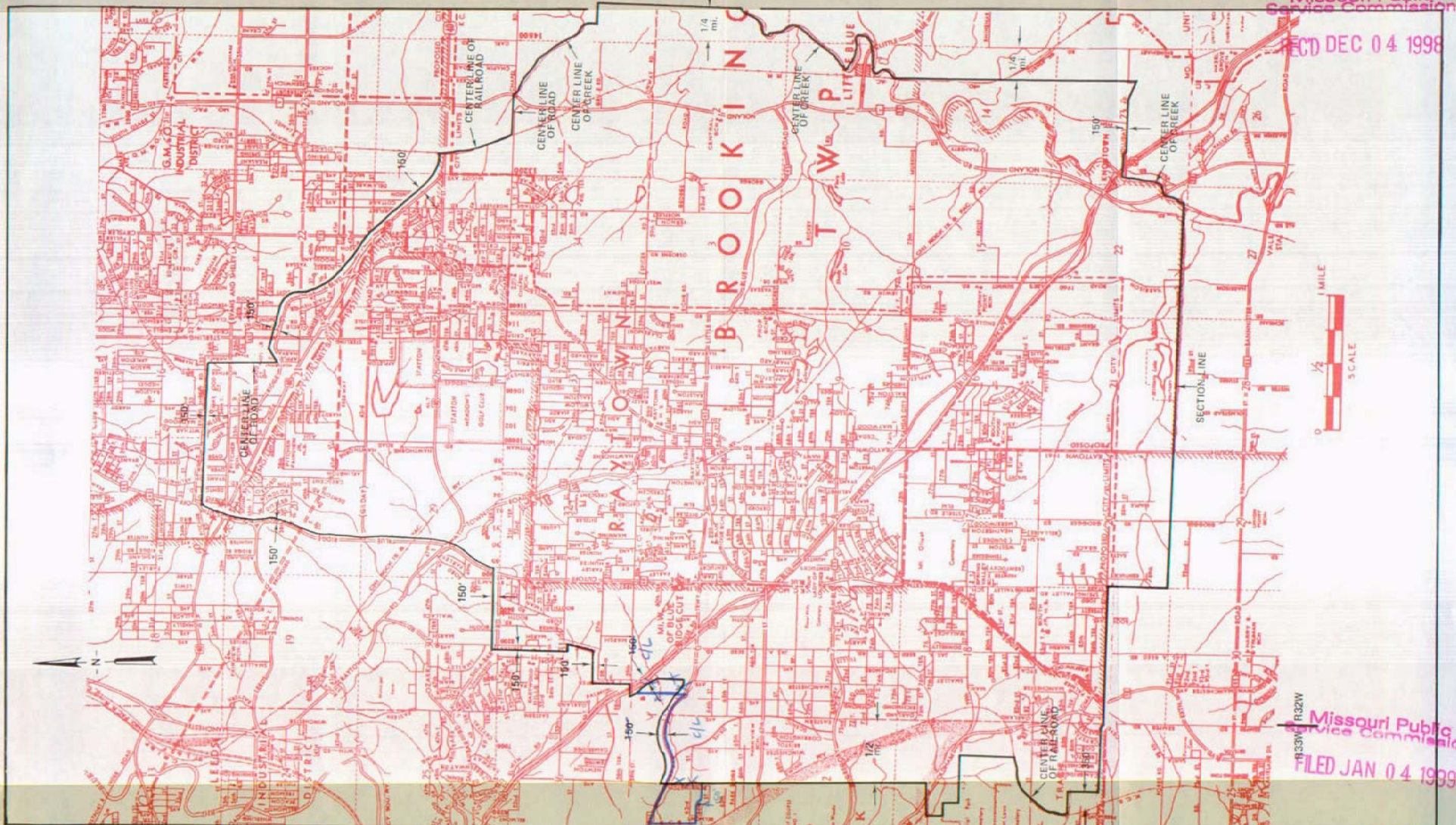
P. S. C. Mo. No. 17

ZONE AND BASE RATE AREA MAP

Kansas City
Metropolitan Exchange
RAY TOWN ZONE
REPLACING REVISED SHEET 14
REPLACING REVISED SHEET 14

Missouri Public
Service Commission

REC'D DEC 04 1998



Missouri Public
Service Commission

FILED JAN 04 1999

DEC 04 1998

Issued: FEBRUARY 7, 1980

By *RAY SHOCKLEY*, President, Missouri
Southwestern Bell Telephone Company
St. Louis, Missouri

Priscilla Hill-Ardoin

T49N
T48W

JAN 04 1999

Effective: MAR 10 1980

SBC PSC MO #17
Kansas City
Metropolitan Exchange
South Kansas City Base Rate Area
6th Revised Sheet 15
Replacing 5th Revised Sheet 15

Non-Scannable Map

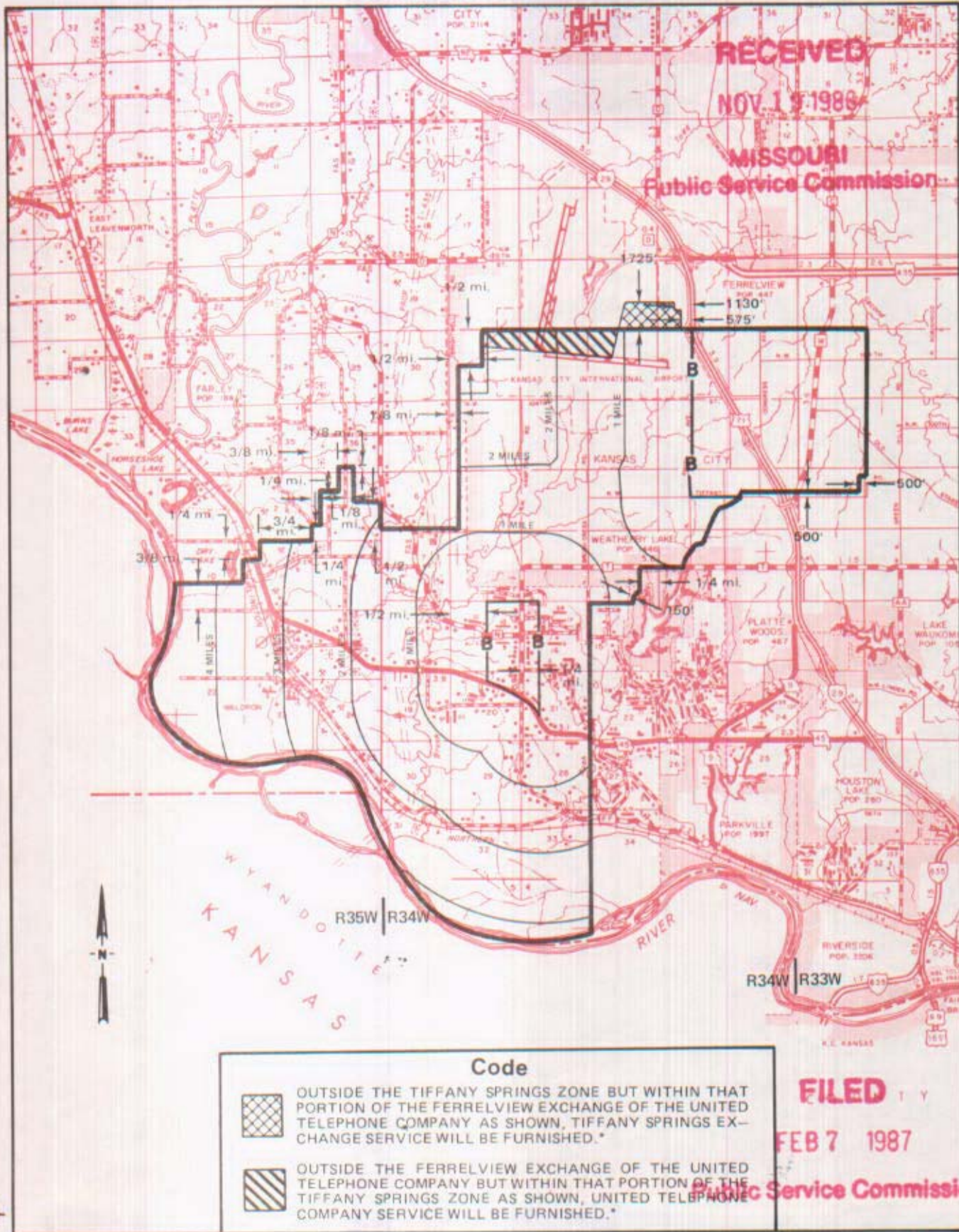
(Is viewable in the Data Center
200 Madison Street, 1st Floor
Jefferson City MO)

NO SUPPLEMENT TO THIS TARIFF WILL BE ISSUED EXCEPT FOR THE PURPOSE OF CANCELING THIS TARIFF.

P. S. C. Mo. No. 17
ZONE AND BASE RATE AREA

Kansas City Metropolitan Exchange
TIFFANY SPRINGS ZONE

6th REVISED SHEET 16
REPLACING 5th REVISED SHEET 16



Issued: November 19, 1986

By **R. D. BARRON**, President, Missouri Division
Southwestern Bell Telephone Company
St. Louis, Missouri

Effective: February 7, 1987

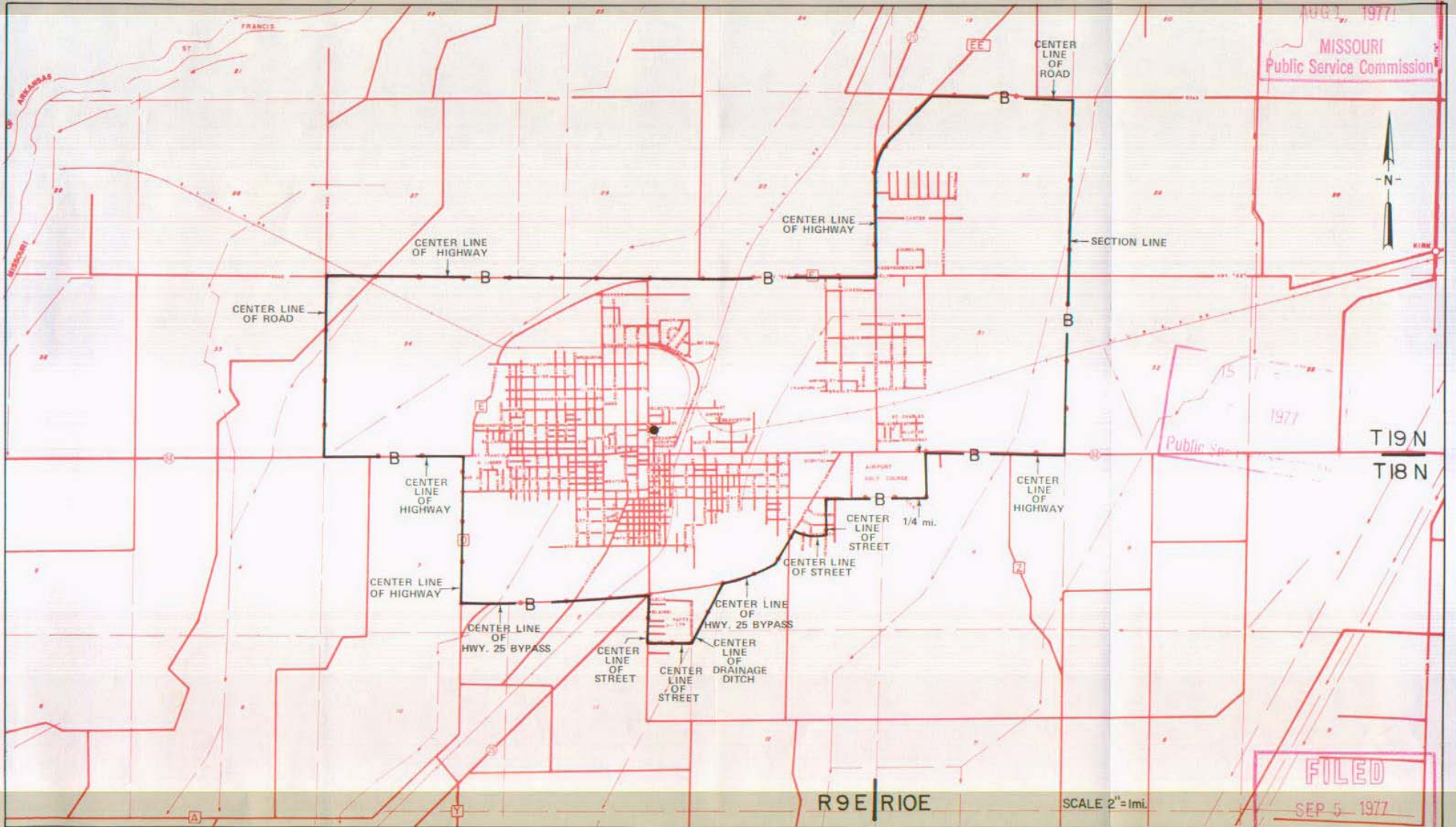
NO SUPPLEMENT TO THIS TARIFF WILL BE ISSUED EXCEPT FOR THE PURPOSE OF CANCELING THIS TARIFF.

P. S. C. Mo. No. 17
BASE RATE AREA MAP

Kennett, Missouri
RECEIVED
PUBLIC SERVICE COMMISSION
REPLACING 2ND REVISED SHEET 2

AUG 1 1977

MISSOURI
Public Service Commission



By R. R. SHOCKLEY, Vice President, Missouri
Southwestern Bell Telephone Company
St. Louis, Missouri

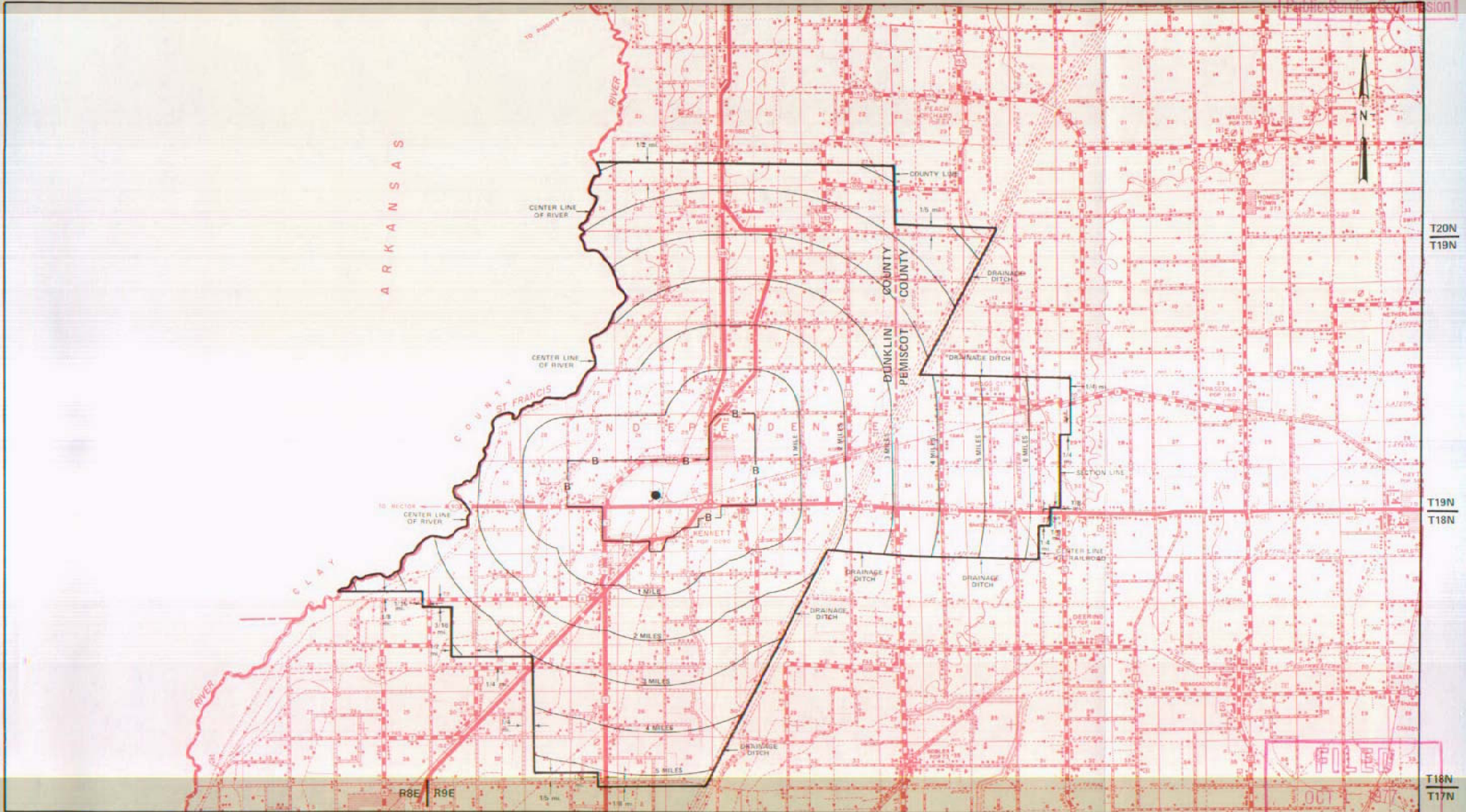
Issued: August 5, 1977

Public Service Commission
Effective: September 5, 1977

NO SUPPLEMENT TO THIS TARIFF WILL BE ISSUED EXCEPT FOR THE PURPOSE OF CANCELING THIS TARIFF.

P. S. C. Mo. No. 17
EXCHANGE AREA MAP

RECEIVED
Kennett, Missouri
APR 11 1977
2nd REVISED SHEET 3
REPLACING 1st REVISED SHEET 3
MISSOURI
Public Service Commission



By R. R. SHOCKLEY, Vice President, Missouri
Southwestern Bell Telephone Company
St. Louis, Missouri

Issued: April 15, 1977

FILED
OCT 1 1977
Public Service Commission
Effective: Oct 1, 1977

SBC PSC MO #17
Kirksville, Missouri
3rd Revised Sheet 2
Replacing 2nd Revised Sheet 2

Non-Scannable Map

(Is viewable in the Data Center
200 Madison Street, 1st Floor
Jefferson City MO)

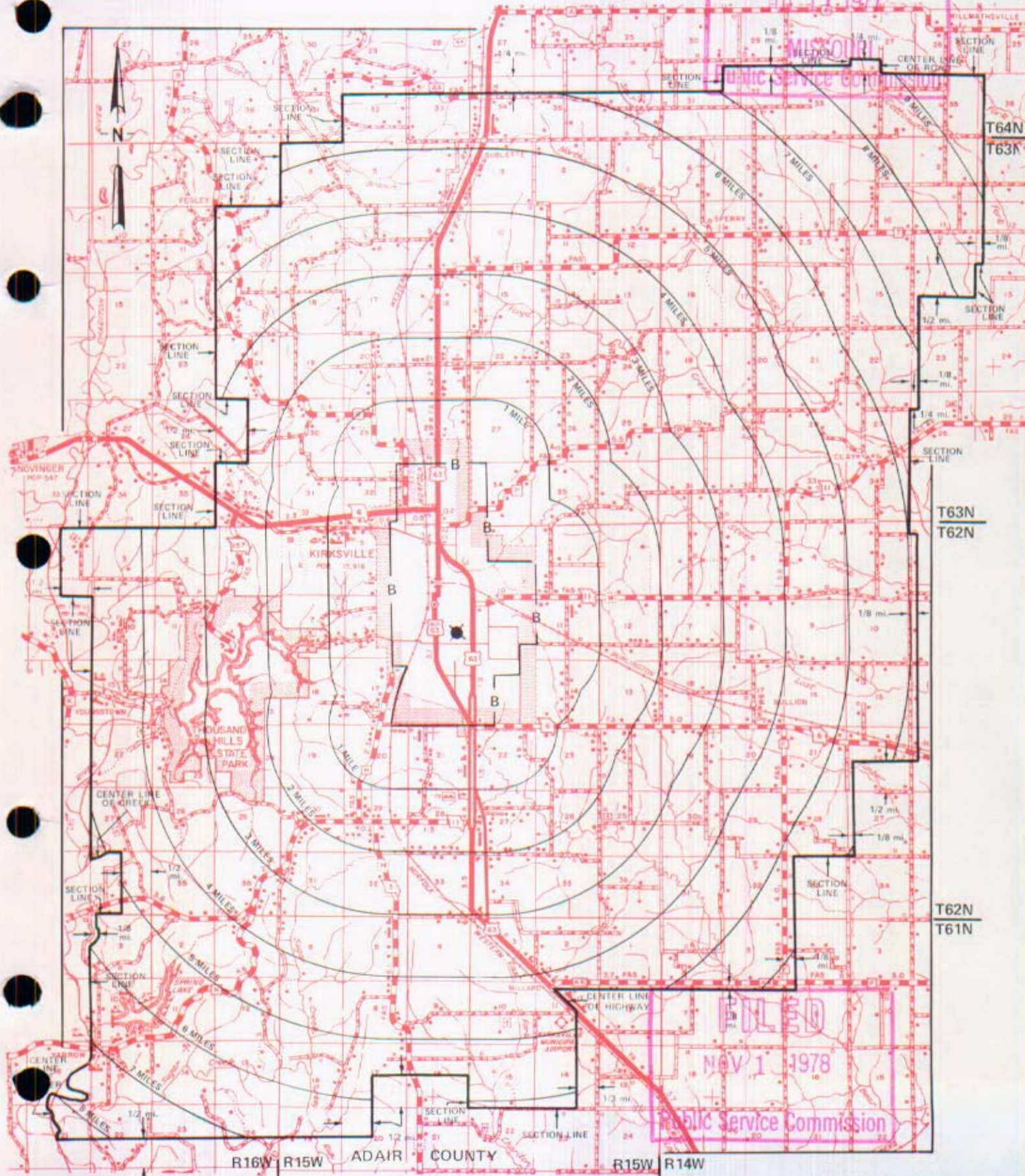
NO SUPPLEMENT TO THIS TARIFF WILL BE ISSUED EXCEPT FOR THE PURPOSE OF CANCELING THIS TARIFF.

P. S. C. Mo. No. 17

EXCHANGE AREA MAP

Kirkville, Missouri
16th REVISED SHEET 3
REPLACING 15th REVISED SHEET 3

411 11 1977



By R. R. SHOCKLEY, Vice President, Missouri
Southwestern Bell Telephone Company
St. Louis, Missouri

NOV 1 - 1978

Issued: July 11, 1977

Effective: _____

KIRKWOOD

see

St. Louis District Exchange Rates

under

"St. Louis"

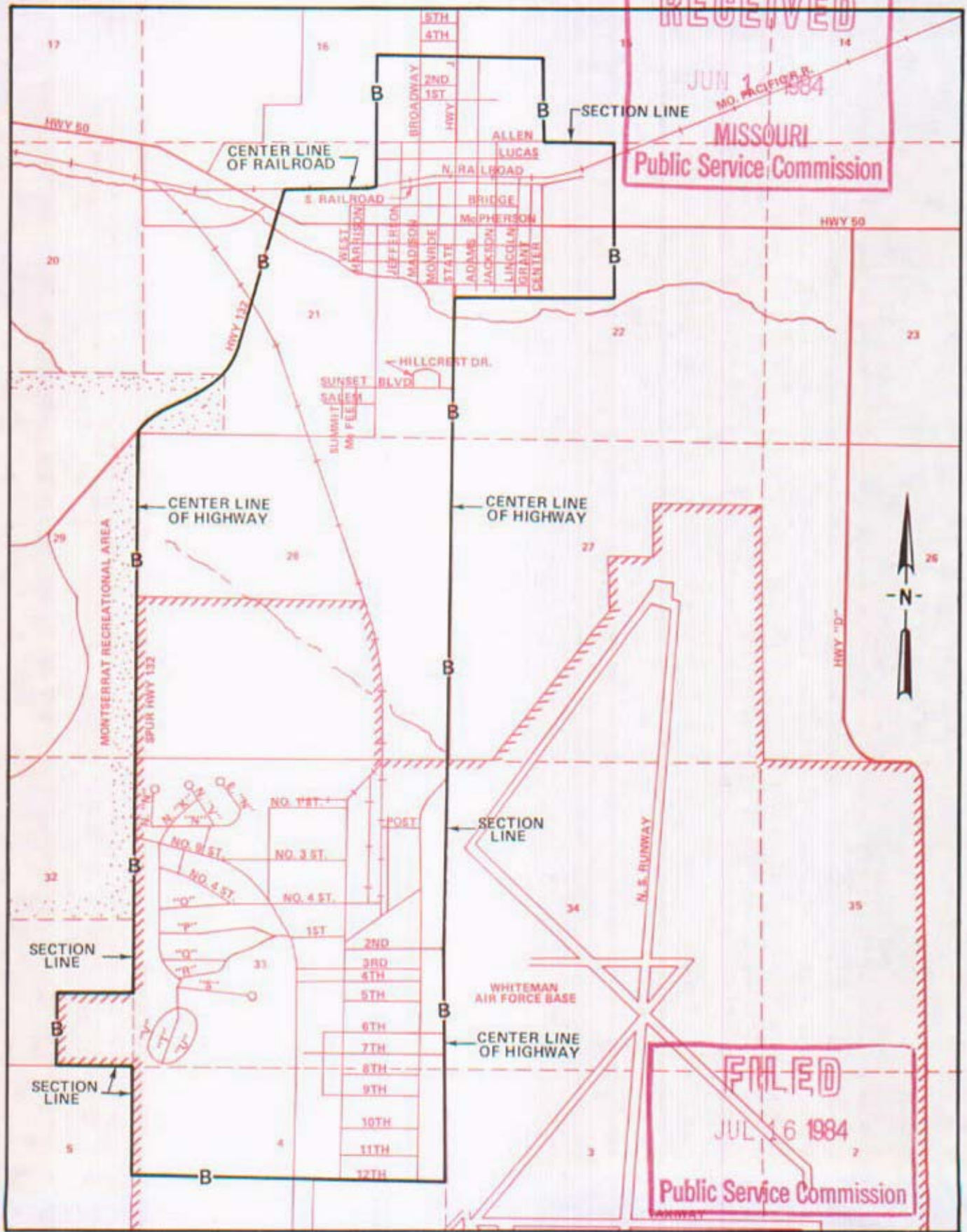
June 1, 1937

NO SUPPLEMENT TO THIS TARIFF WILL BE ISSUED EXCEPT FOR THE PURPOSE OF CANCELING THIS TARIFF.

P. S. C. Mo. No. 17

Knob Noster, Missouri
5th REVISED SHEET 2
REPLACING 4th REVISED SHEET 2

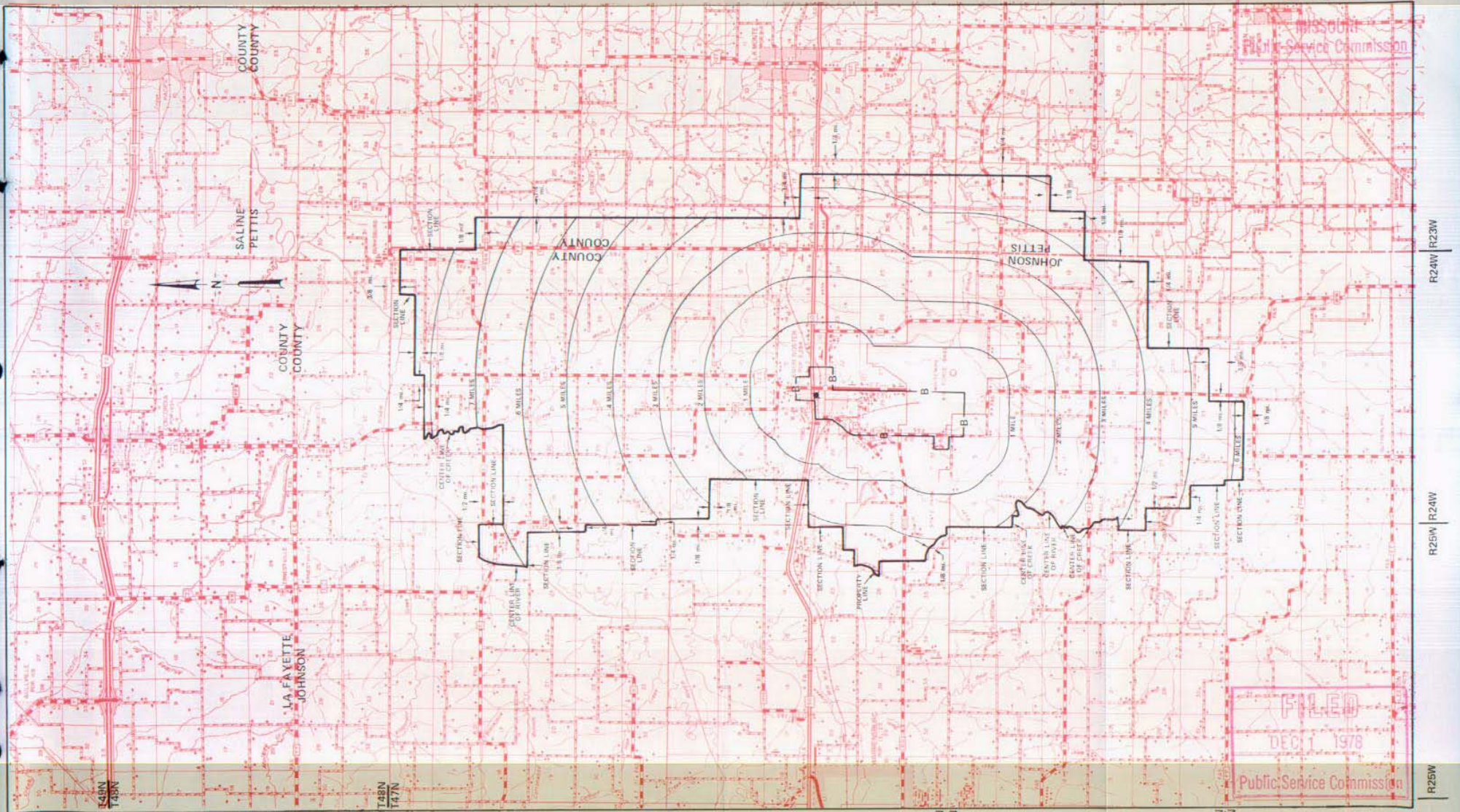
BASE RATE AREA MAP



NO SUPPLEMENT TO THIS TARIFF WILL BE ISSUED EXCEPT FOR THE PURPOSE OF CANCELING THIS TARIFF.

P. S. C. Mo. No. 17
EXCHANGE AREA MAP

Knob Noster, Missouri
RECEIVED
7th REVISED SHEET 3
REPLACING 6th REVISED SHEET 3
FEB 14 1977
Missouri
Public Service Commission



By R. R. SHOCKLEY, Vice President, Missouri
Southwestern Bell Telephone Company
St. Louis, Missouri

Issued: February 15, 1977

FILED
DEC 1 1978
Public Service Commission

Effective: DEC 1 1978