

LADUE

see

St. Louis District Exchange Rates

under

"St. Louis"

June 1, 1937

SBC PSC MO #17
Lake Ozark-Osage Beach, Missouri
Osage Beach Base Rate Area
Original Sheet 2-A
Replacing 2nd Revised Sheet 2
Of the Ozark Central Telephone Company
P.S.C. Mo. No. 1

Non-Scannable Map

**(Is viewable in the Data Center
200 Madison Street, 1st Floor
Jefferson City MO)**

SBC PSC MO #17
Lake Ozark-Osage Beach, Missouri
Lake Ozark- Base Rate Area
Original Sheet 2
Replacing Original Sheet 3
Of the Ozark Central Telephone Company
P.S.C. Mo. No. 1

Non-Scannable Map

(Is viewable in the Data Center
200 Madison Street, 1st Floor
Jefferson City MO)

SBC PSC MO #17

Lake Ozark-Osage Beach, Missouri

7th Revised Sheet 3

Replacing 6th Revised Sheet 3

Non-Scannable Map

(Is viewable in the Data Center
200 Madison Street, 1st Floor
Jefferson City MO)

SBC PSC MO #17
Lamar, Missouri
2nd Revised Sheet 2
Replacing 1st Revised Sheet 2

Non-Scannable Map

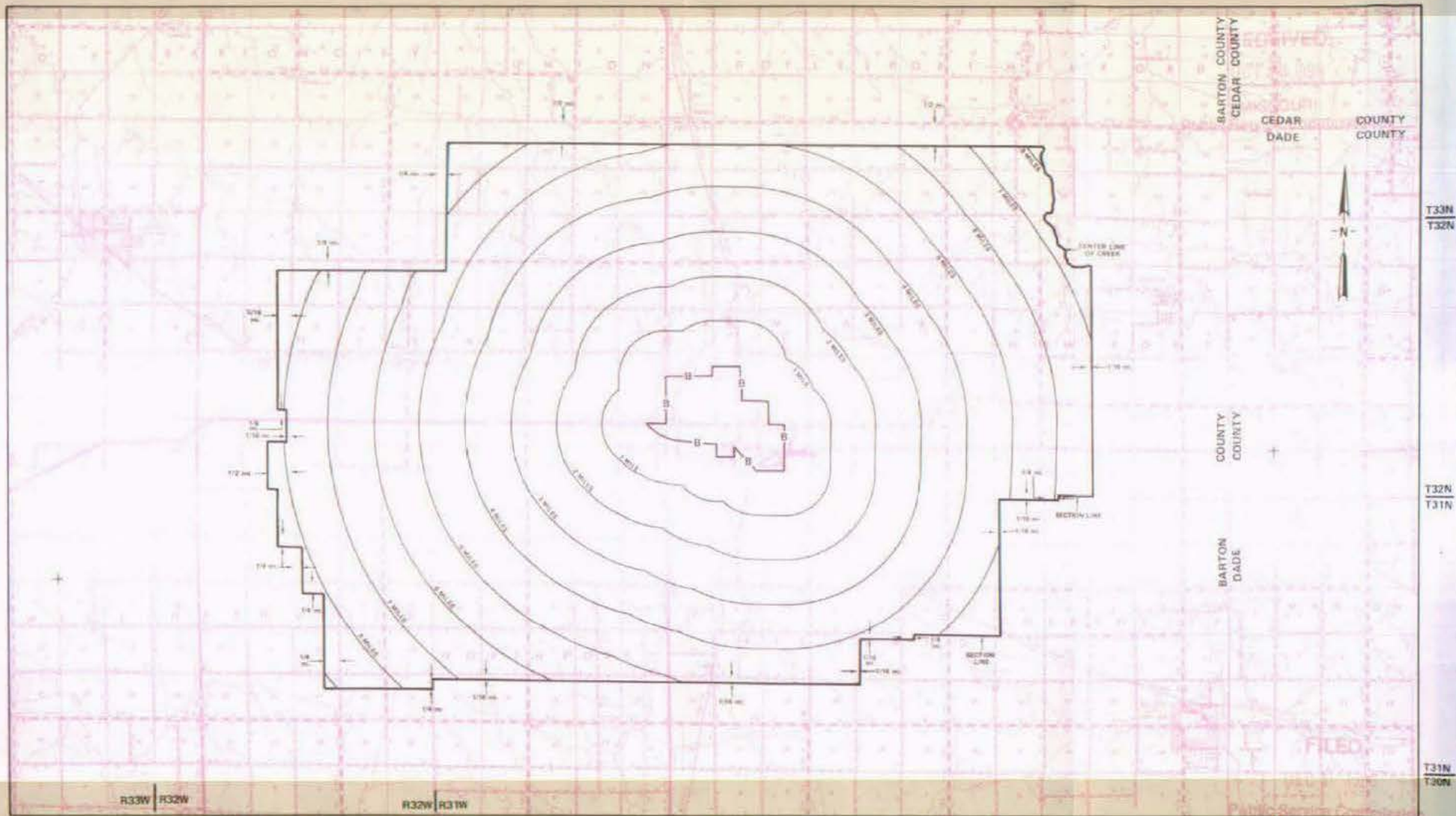
(Is viewable in the Data Center
200 Madison Street, 1st Floor
Jefferson City MO)

NO SUPPLEMENT TO THIS TARIFF WILL
BE ISSUED EXCEPT FOR THE PURPOSE OF
CANCELING THIS TARIFF.

P. S. C. Mo. No. 17
EXCHANGE AREA MAP

Lamar, Missouri

10th REVISED SHEET 3
REPLACING 9th REVISED SHEET 3



Issued: November 1, 1988

By R. D. BARRON, President, Missouri Division
Southwestern Bell Telephone Company
St. Louis, Missouri

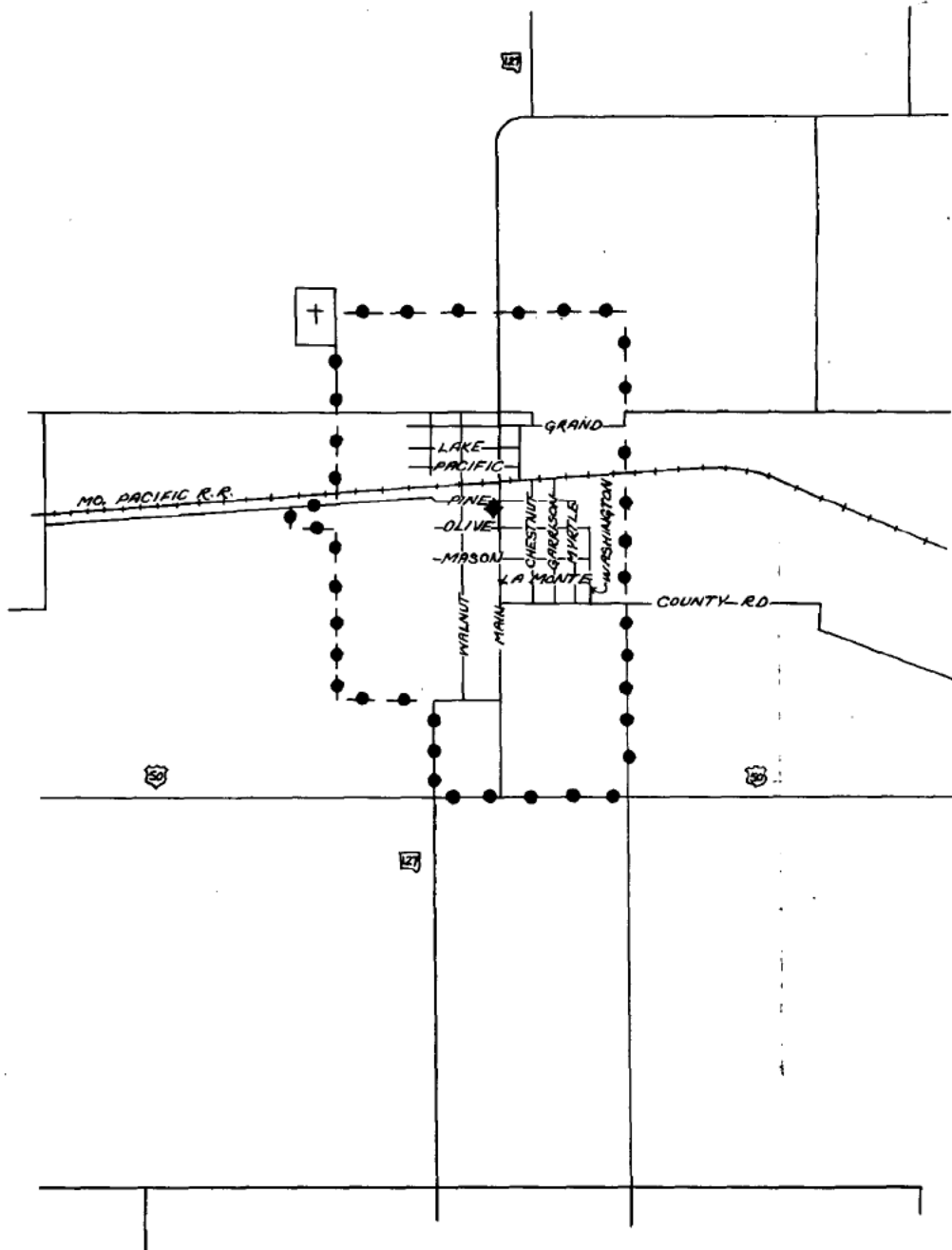
R31W | R30W

R30W | R29W

R29W | R28W

Effective: December 1, 1988

LA MONTE, MO.



CODE
BELL CENTRAL OFFICE: 
BASE RATE AREA LIMITS: 

Issued: March 19, 1952

Effective: April 18, 1952

By H. R. TOWLES, General Manager
Southwestern Bell Telephone Company
St. Louis, Missouri

NO SUPPLEMENT TO THIS TARIFF WILL BE ISSUED EXCEPT FOR THE PURPOSE OF CANCELING THIS TARIFF.

P. S. C. Mo. No. 17 EXCHANGE AREA MAP

La Monte, Missouri

5 4th REVISED SHEET 3
REPLACING 3rd REVISED SHEET 3

4

Missouri Public Service Commission

REC'D MAR 19 1999

T48N
T47N



JOHNSON COUNTY
PETTIS COUNTY

JOHNSON COUNTY
PETTIS COUNTY

Proposed NEW Boundary

T47N
T46N

T46N
T45N

Missouri Public Service Commission

FILED APR 19 1999

MAR 19 1999

R24W

R23W

R23W

R22W

APR 19 1999

By Priscilla Hill-Ardoin

By R. R. SHOCKLEY, Vice President, Missouri

Southwestern Bell Telephone Company

JUL 19 1978

May 10, 1977

Effective

SBC PSC MO #17
Lancaster, Missouri
1st Revised Sheet 2
Replacing Original Sheet 2

Non-Scannable Map

(Is viewable in the Data Center
200 Madison Street, 1st Floor
Jefferson City MO)

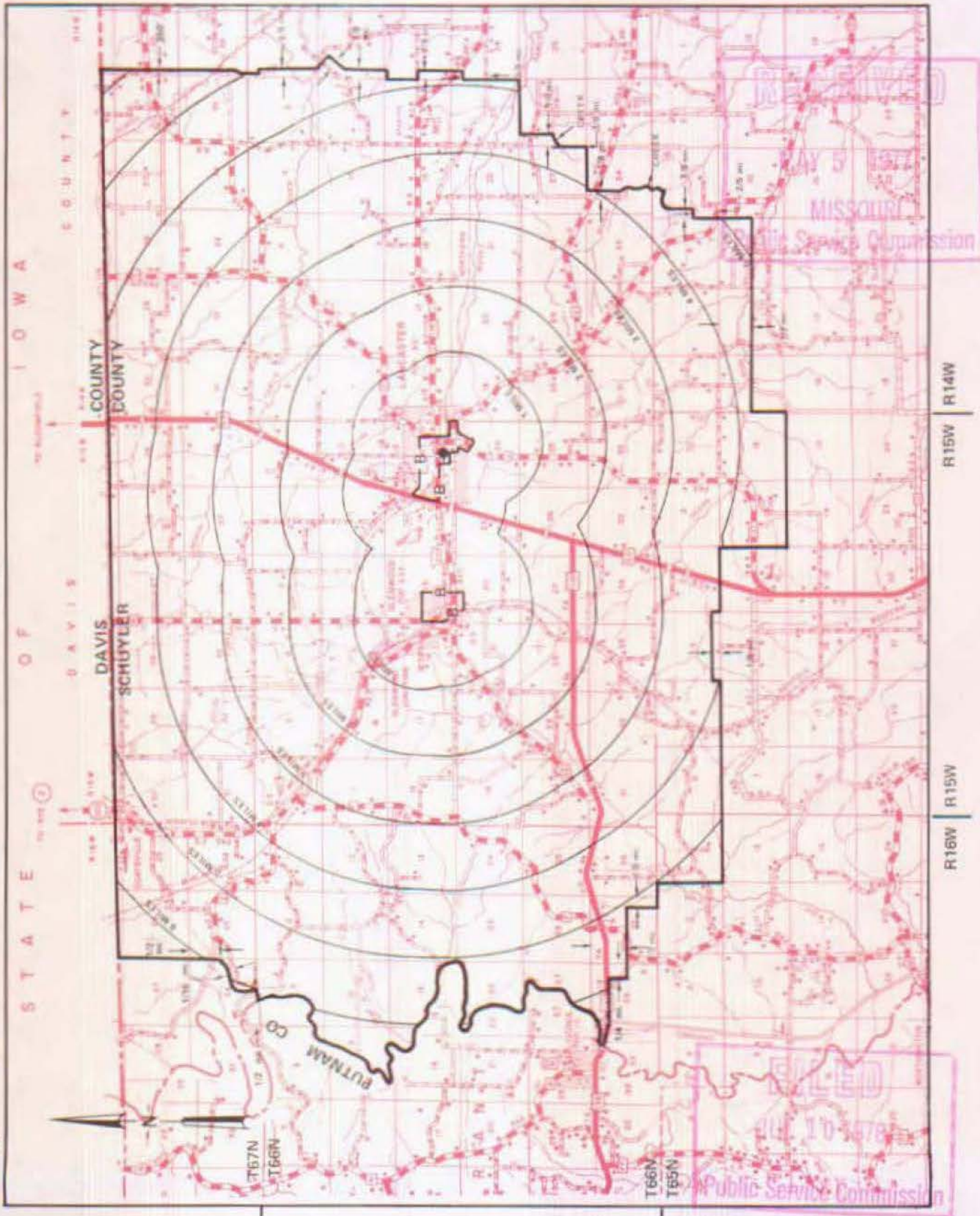
NO SUPPLEMENT TO THIS TARIFF WILL BE ISSUED EXCEPT FOR THE PURPOSE OF CANCELING THIS TARIFF.

P. S. C. Mo. No. 17

Lancaster, Missouri

EXCHANGE AREA MAP

6th REVISED SHEET 3
REPLACING 5th REVISED SHEET 3



By R. R. SHOCKLEY, Vice President, Missouri
Southwestern Bell Telephone Company

Issued: May 10, 1977

JUL 10 1978

SBC PSC MO #17
Leadwood, Missouri
2nd Revised Sheet 2
Replacing 1st Revised Sheet 2

Non-Scannable Map

(Is viewable in the Data Center
200 Madison Street, 1st Floor
Jefferson City MO)

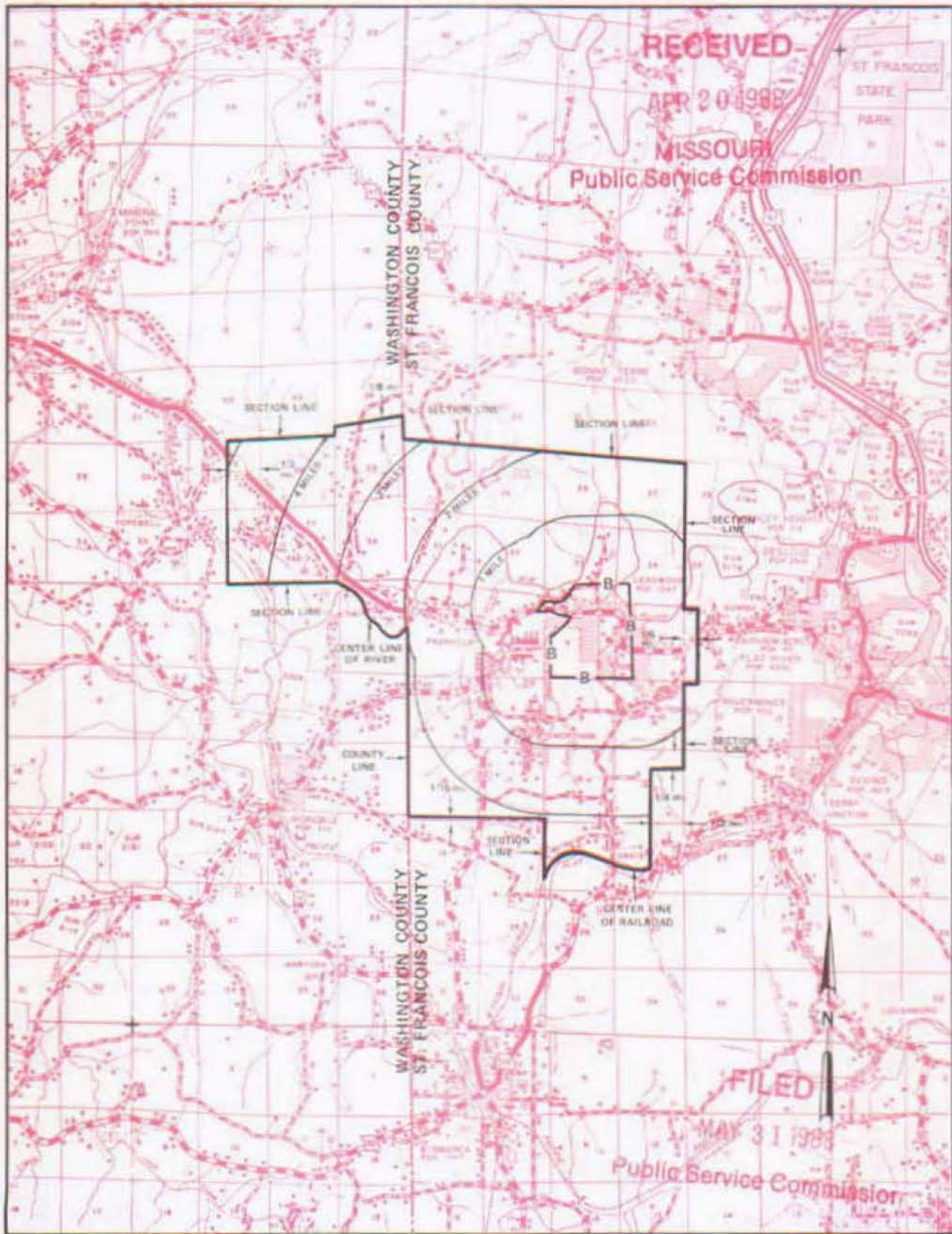
NO SUPPLEMENT TO THIS TARIFF WILL BE ISSUED EXCEPT FOR THE PURPOSE OF CANCELING THIS TARIFF.

P. S. C. Mo. No. 17

Leadwood, Missouri

7th REVISED SHEET 3
REPLACING 6th REVISED SHEET 3

EXCHANGE AREA MAP



T38N
T37N

T37N
T36N

T36N
T35N

R3E | R4E

R4E | R5E

By R. D. BARRON, President, Missouri Division
Southwestern Bell Telephone Company
St. Louis, Missouri

Issued: APRIL 29, 1988

Effective: MAY 31, 1988



**Southwestern Bell
Telephone**

100 North Tucker Boulevard
St. Louis, Missouri 63101
Phone (314) 247-9800

May 4, 1987

RECEIVED

MAY 6 1987

Mr. Ralph Gladden
Rate and Tariff Examiner
Missouri Public Service Commission
P.O. Box 360
Jefferson City, Missouri 65102

**MISSOURI
Public Service Commission**

Dear Mr. Gladden:

This concerns our previous discussions regarding the boundary discrepancy between the Farley Exchange, located in Missouri and the Missouri Portion of the Leavenworth-Lansing, Kansas Exchange. I have attached copies of both of these exchange area maps depicting the location of the discrepancy.

Our Kansas coordinates have agreed that the Farley, Missouri Exchange Map is correct and the Missouri Portion of the Leavenworth-Lansing, Kansas Exchange Area Map will require revisions. The Kansas Rate Administration office will take responsibility for correcting this map.

As soon as we receive these revised maps, I will file a corrected copy with the Commission.

If you have any questions concerning this matter, please contact me on (314) 247-5765.

Very truly yours,

Staff Manager
Rate Administration

Attachments

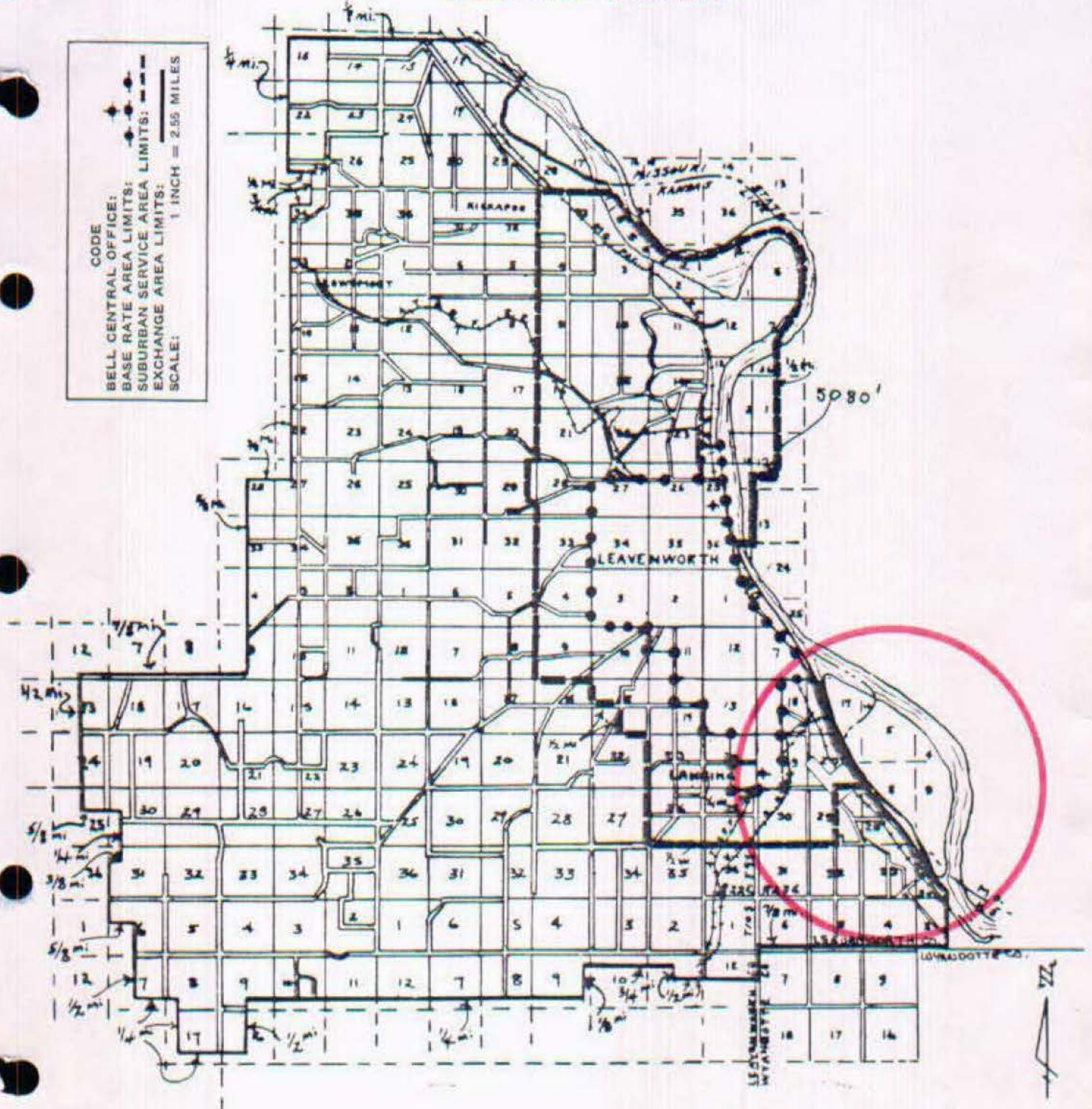
NO SUPPLEMENT TO THIS TARIFF WILL BE ISSUED EXCEPT FOR THE PURPOSE OF CANCELING THIS TARIFF.

Missouri Portion-Leavenworth-Lansing, Kansas Exchange

1st REVISED SHEET 2
REPLACING ORIGINAL SHEET 2

EXCHANGE AREA MAP

CODE
BELL CENTRAL OFFICE: 
BASE RATE AREA LIMITS: 
SUBURBAN SERVICE AREA LIMITS: 
EXCHANGE AREA LIMITS: 
SCALE: 1 INCH = 2.55 MILES



Issued: June 6, 1973

Effective: July 6, 1973

By R. R. SHOCKLEY, Vice President, Missouri-Illinois
Southwestern Bell Telephone Company
St. Louis, Missouri

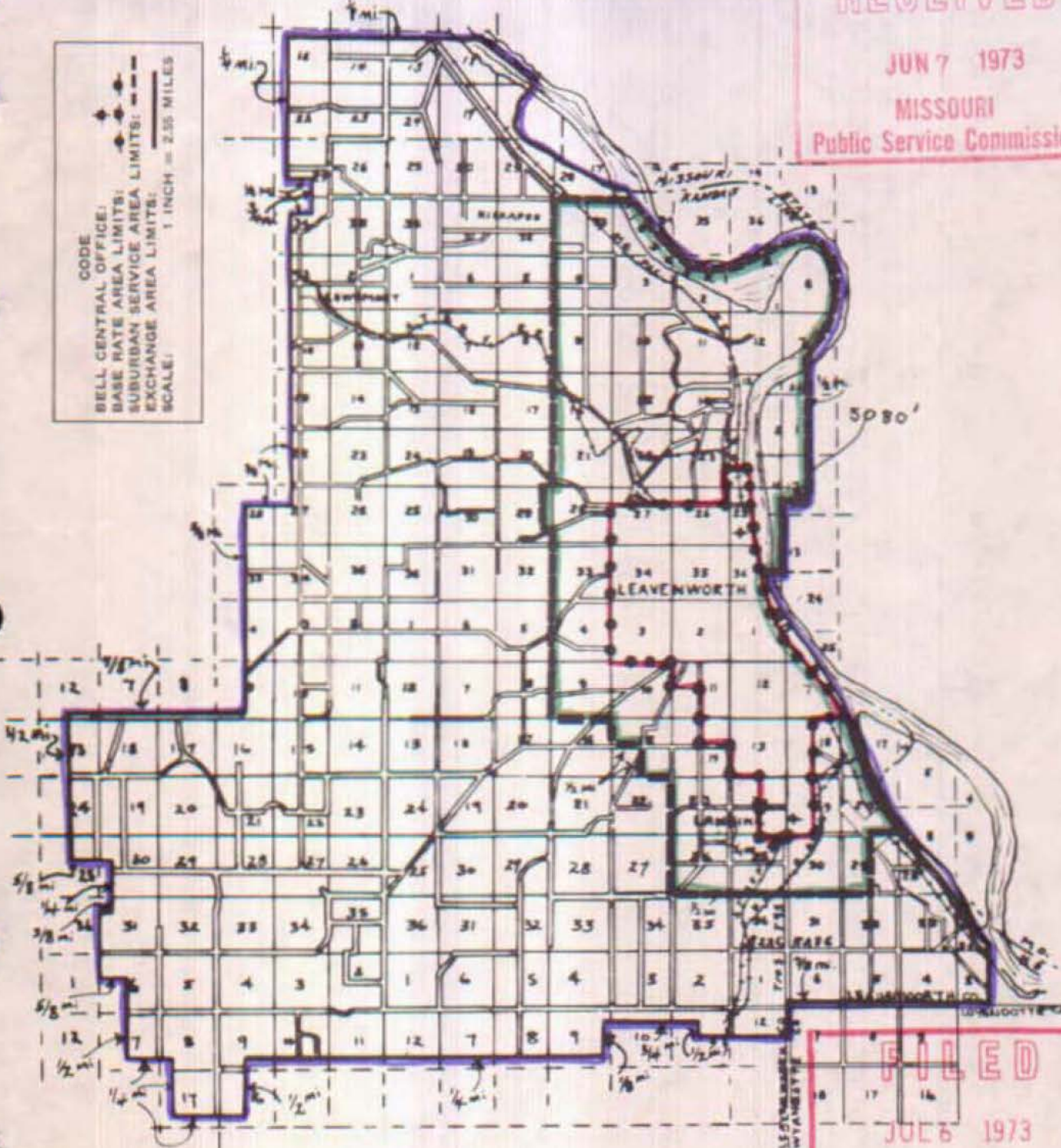
NO SUPPLEMENT TO THIS TARIFF WILL BE ISSUED EXCEPT FOR THE PURPOSE OF CANCELING THIS TARIFF.

Missouri Portion-Leavenworth-Lansing, Kansas Exchange
1st REVISED SHEET 2
REPLACING ORIGINAL SHEET 2

EXCHANGE AREA MAP

RECEIVED
JUN 7 1973
MISSOURI
Public Service Commission

CODE
BELL CENTRAL OFFICE:
BASE RATE AREA LIMITS:
SUBURBAN SERVICE AREA LIMITS:
EXCHANGE AREA LIMITS:
SCALE: 1 INCH = 2.55 MILES



- Exchange Boundary
- Base Rate Area Boundary
- Suburban Service Area

FILED
JUL 6 1973
Public Service Commission

Issued: June 6, 1973

Effective: July 6, 1973

By R. R. SHOCKLEY, Vice President, Missouri-Illinois
Southwestern Bell Telephone Company
St. Louis, Missouri

SBC PSC MO #17
Lilbourn, Missouri
1st Revised Sheet 2
Replacing Original Sheet 2

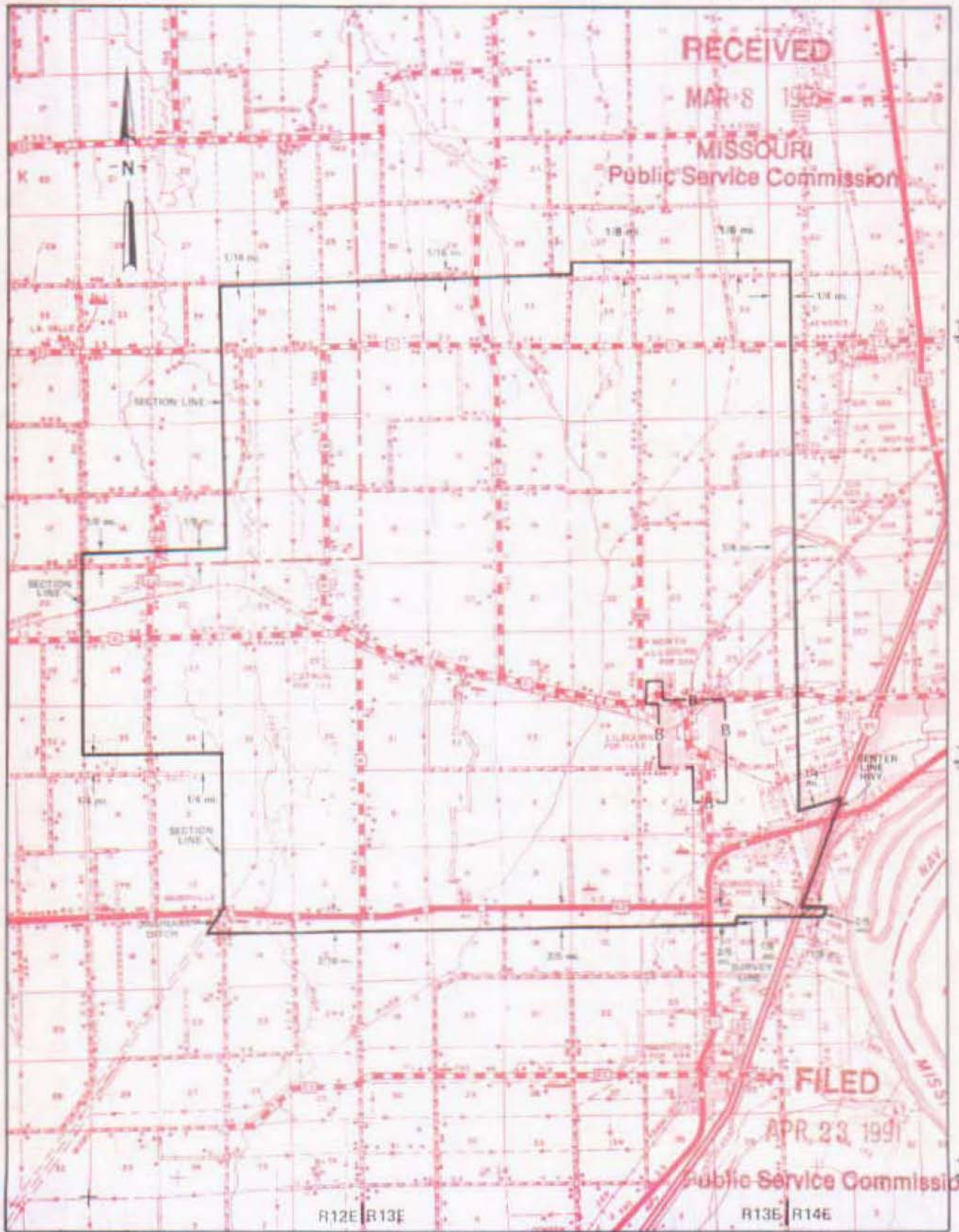
Non-Scannable Map

(Is viewable in the Data Center
200 Madison Street, 1st Floor
Jefferson City MO)

NO SUPPLEMENT TO THIS TARIFF WILL BE ISSUED EXCEPT FOR THE PURPOSE OF CANCELING THIS TARIFF.

P. S. C. Mo. No. 17
EXCHANGE AREA MAP

10th REVISED SHEET 3
REPLACING 9th REVISED SHEET 3



By R. D. BARRON, PRESIDENT, MISSOURI DIVISION
Southwestern Bell Telephone Company
St. Louis, Missouri

Issued: March 8, 1991

Effective: April 23, 1991

NO SUPPLEMENT TO THIS TARIFF WILL
BE ISSUED EXCEPT FOR THE PURPOSE OF
CANCELING THIS TARIFF.

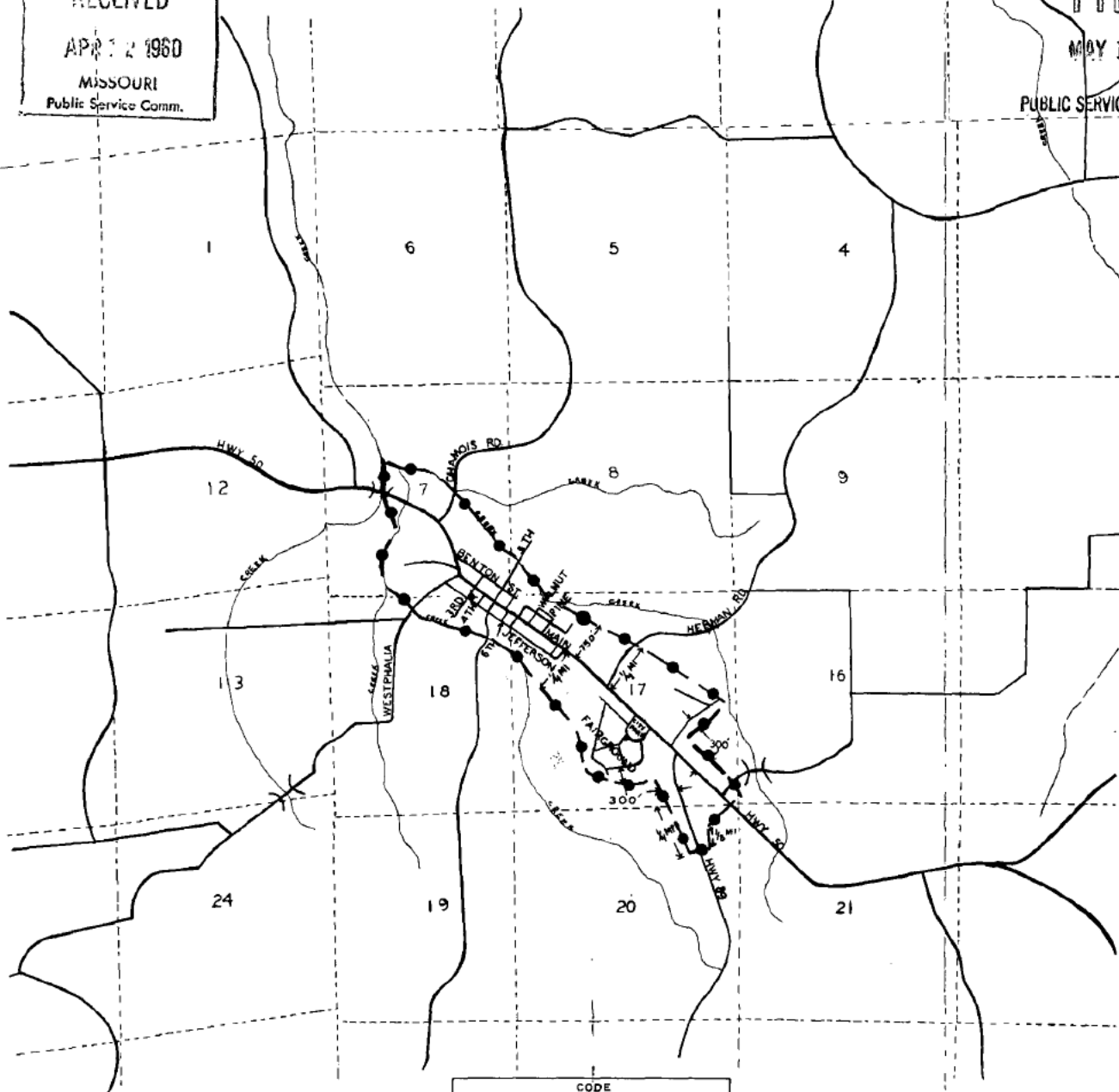
P. S. C. Mo. No. 17
BASE RATE AREA MAP

Linn, Missouri
1st REVISED SHEET 2
REPLACING ORIGINAL SHEET 2

RECEIVED
APR 12 1960
MISSOURI
Public Service Comm.

FILED
MAY 15 1960
PUBLIC SERVICE COMMISSION

LINN, MO.



CODE
BELL CENTRAL OFFICE:
BASE RATE AREA LIMITS:



Issued: April 15, 1960

By F. B. HUNT, Vice President and General Manager
Southwestern Bell Telephone Company
St. Louis, Missouri

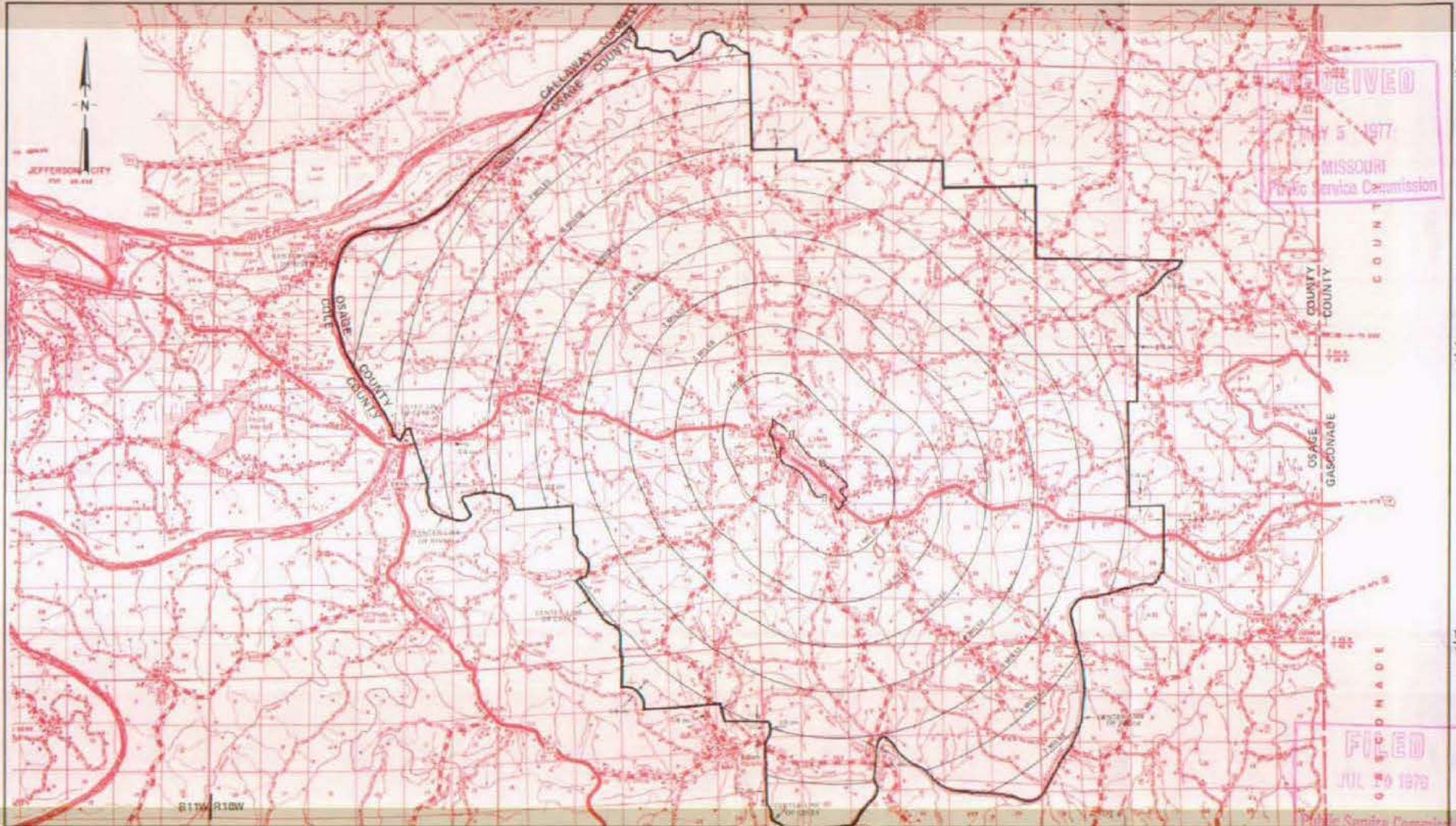
Effective: May 15, 1960

NO SUPPLEMENT TO THIS TARIFF WILL BE ISSUED EXCEPT FOR THE PURPOSE OF CANCELING THIS TARIFF.

P. S. C. Mo. No. 17
EXCHANGE AREA MAP

Linn, Missouri

5th REVISED SHEET 3
REPLACING 5th REVISED SHEET 3



RECEIVED
MAY 5 1977
MISSOURI
Public Service Commission

FILED
JUL 10 1978
Public Service Commission

T45N
T44N
T43N
T42N

By R. R. SHOCKLEY, Vice President, Missouri
Southwestern Bell Telephone
St. Louis, Missouri

Issued: MAY 10 1977

Effective: JUL 10 1978

NO SUPPLEMENT TO THIS TARIFF WILL BE ISSUED EXCEPT FOR THE PURPOSE OF CANCELING THIS TARIFF.

✓ LINN CREEK, MISSOURI
OSAGE BEACH-LINN CREEK
First Revised Sheet 5
Replacing Original Sheet 5

P.S.C. Mo. 1
(Canceling all Previous Schedules)
EXCHANGE AND INITIAL RATE AREA MAP

LINN CREEK, MO. - SCALE 1/2" = 1 MILE



DEC 18 1947
FILED
JAN 17 1948
St. Louis, Mo.

CODE
CENTRAL OFFICE: ◆
INITIAL RATE AREA LIMITS: ◆◆◆◆
EXCHANGE AREA LIMITS: ————
SCALE: 1/2 INCH = 1 MILE

Issued: December 17, 1947

Effective: January 17, 1948

By T. L. LEONARD, President
Ozark Central Telephone Company
St. Louis, Missouri

NO SUPPLEMENT TO THIS TARIFF WILL
BE ISSUED EXCEPT FOR THE PURPOSE
OF CANCELING THIS TARIFF.

LINN CREEK, MISSOURI
Linn Creek Zone
2ND REVISED SHEET 1
CANCELING 1ST REVISED SHEET 1



For rates and practices relating to Linn Creek, please refer to the Camdenton,
Missouri Local Exchange Tariff.

FILED

OCT 1 1950

PUBLIC SERVICE COMMISSION

Issued: August 28, 1950

Effective: October 1, 1950

By T. L. LEONARD, President
Ozark Central Telephone Company
St. Louis, Missouri

No supplement to this tariff will be issued except for the purpose of canceling this tariff.

P. S. C. Mo. - No. 17

LOCKWOOD, MISSOURI

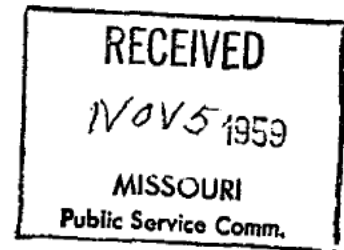
Original Sheet 1
Canceling Western Light and Telephone Company's
Local Exchange Tariffs P.S. C. MO. No. 3
4th Revised Sheet 1
4th Revised Sheet 2
1st Revised Sheet 3.01

For local rates applicable to Lockwood please refer to the local exchange tariff Sheet 1 and Sheet 1-C.

FILED

DEC 17 1959

PUBLIC SERVICE COMMISSION



Issued: November 17, 1959

Effective: December 17, 1959

By E. G. GREBER, Vice President and General Manager
Southwestern Bell Telephone Company
St. Louis, Missouri

**SBC PSC MO #17
Lockwood, Missouri**

Original Sheet 2

Replacing Western Light and Telephone Company

P.S.C. Mo. No. 3

Original Sheet 5

**Non-Scannable
Map**

**(Is viewable in the Data Center
200 Madison Street, 1st Floor
Jefferson City MO)**

NO SUPPLEMENT TO THIS TARIFF WILL BE ISSUED EXCEPT FOR THE PURPOSE OF CANCELING THIS TARIFF.

P. S. C. Mo. No. 17

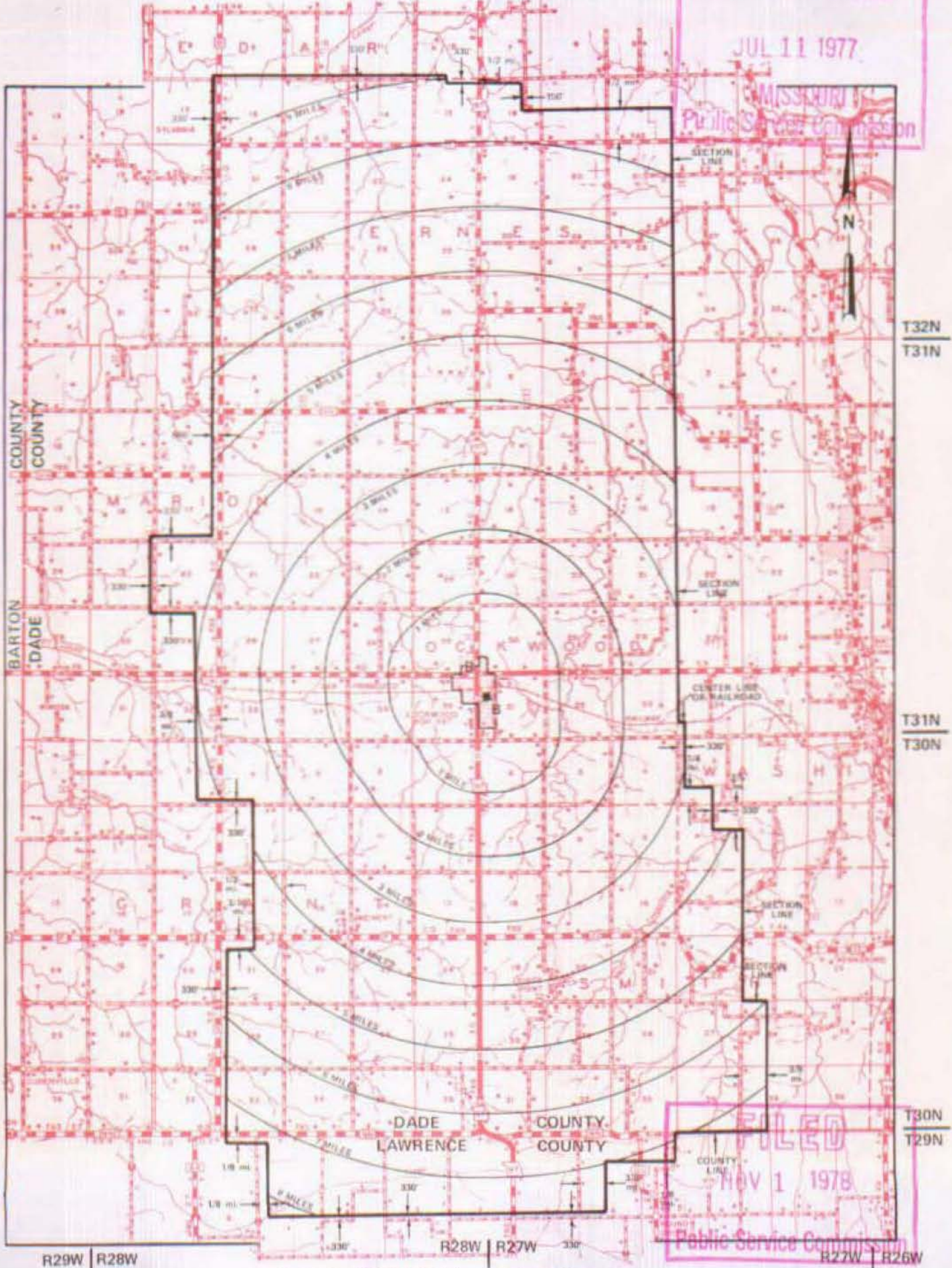
EXCHANGE AREA MAP

REPLACING 3rd REVISED SHEET

Lockwood, Missouri
4th REVISED SHEET
3rd REVISED SHEET

JUL 11 1977

MISSOURI
Public Service Commission



T32N
T31N

T31N
T30N

T30N
T29N

R29W | R28W

R28W | R27W

R27W | R26W

By R. R. SHOCKLEY, Vice President, Missouri
Southwestern Bell Telephone Company

FILED
NOV 1 1978
Public Service Commission

NOV 1 - 1978

NO SUPPLEMENT TO THIS TARIFF WILL
BE ISSUED EXCEPT FOR THE PURPOSE OF
CANCELING THIS TARIFF.

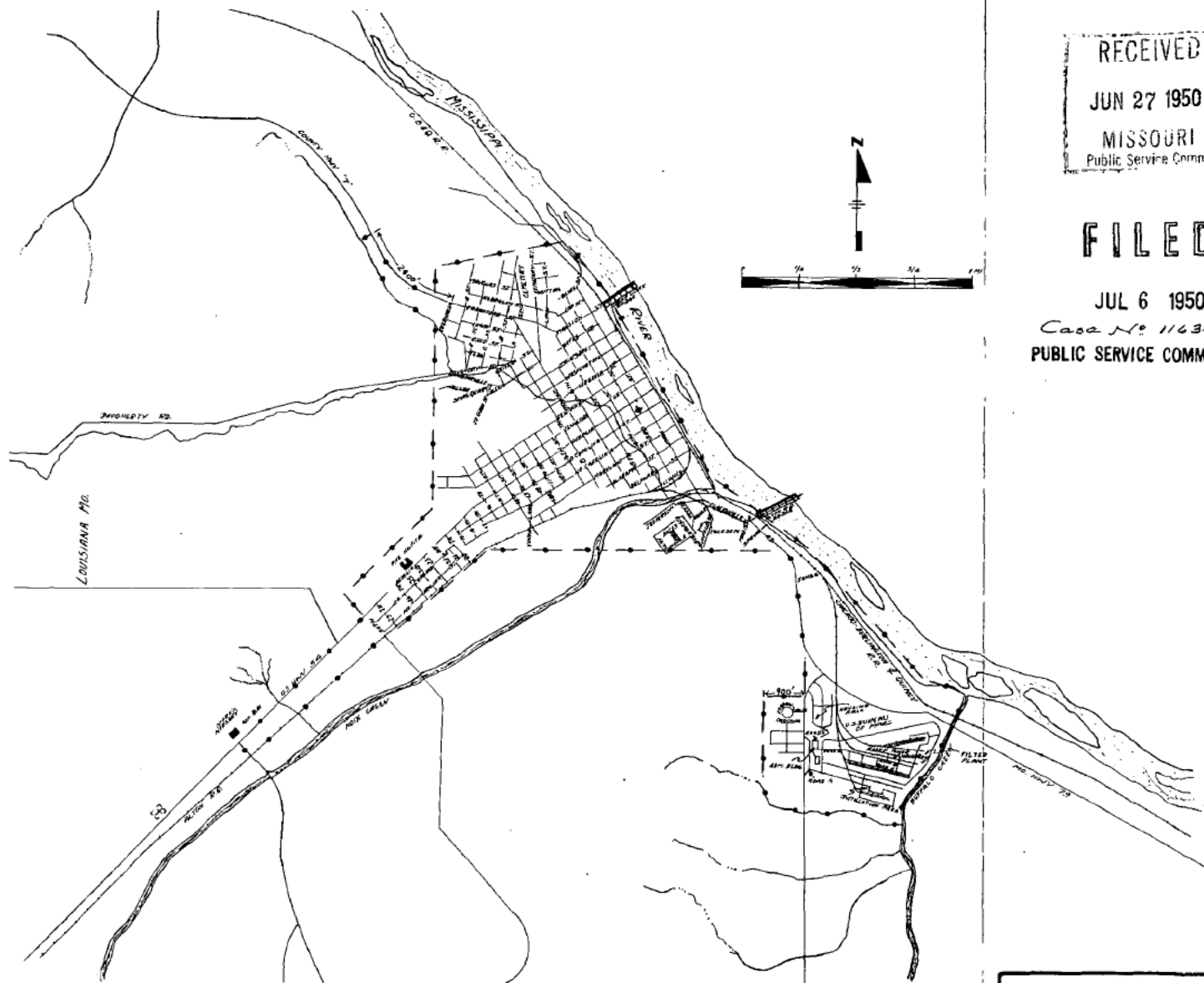
P. S. C.-Mo. No. 17
BASE RATE AREA MAP

Louisiana, Missouri
ORIGINAL SHEET 2
REPLACING ORIGINAL SHEET 1-A

RECEIVED
JUN 27 1950
MISSOURI
Public Service Comm.

FILED

JUL 6 1950
Case No 11634
PUBLIC SERVICE COMMISSION



Issued: June 27, 1950

By H. R. TOWLES, General Manager
Southwestern Bell Telephone Company
St. Louis, Missouri

Effective: July 6, 1950

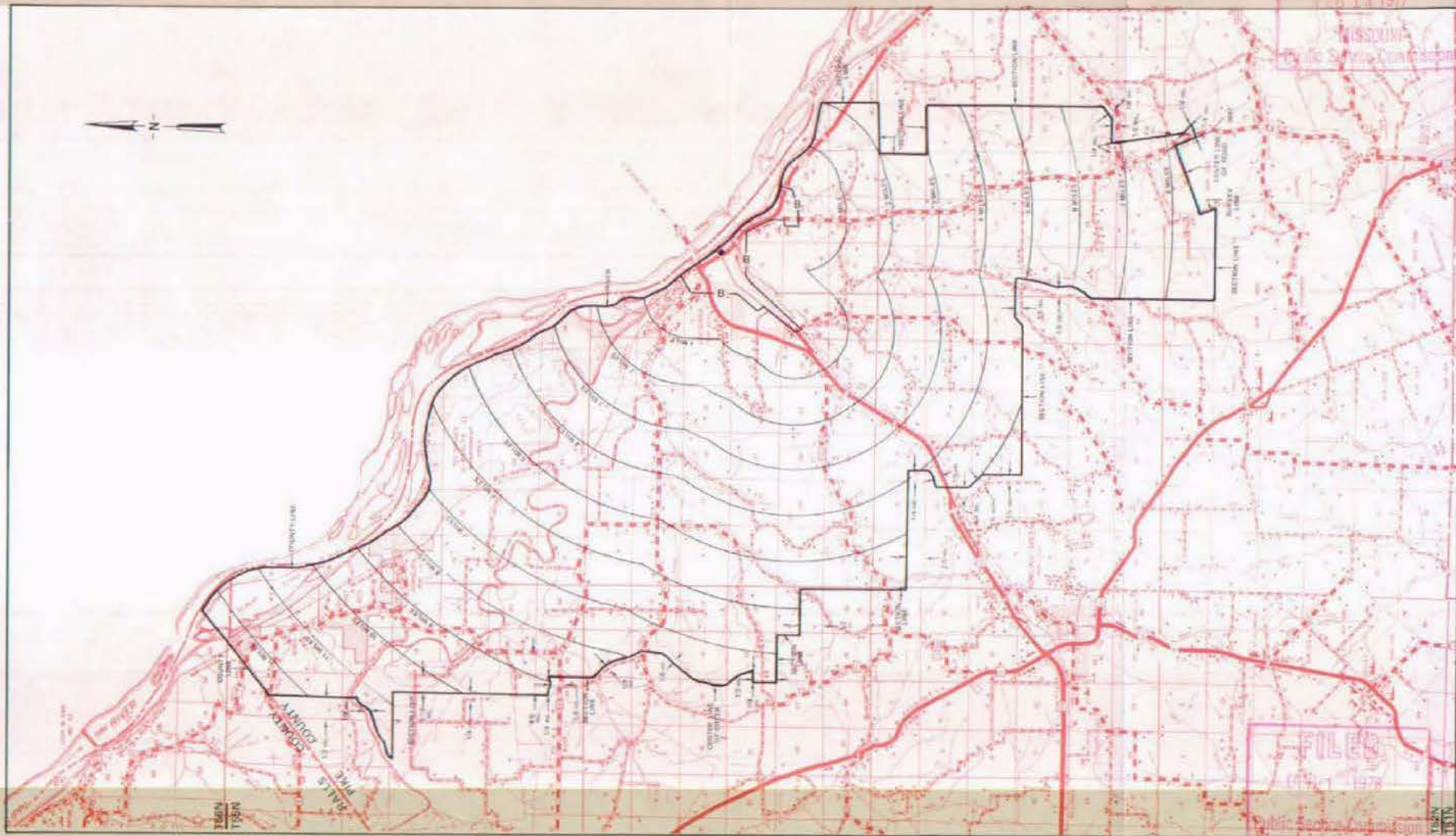
NO SUPPLEMENT TO THIS TARIFF WILL BE ISSUED EXCEPT FOR THE PURPOSE OF CANCELING THIS TARIFF.

P. S. C. Mo. No. 17
EXCHANGE AREA MAP

Louisiana, Missouri
17th REVISED SHEET
REPLACING 10th REVISED SHEET

FEB 14 1977

MISSOURI
Public Service Commission



By R. R. SHOCKLEY, Vice President, Missouri
Southwestern Bell Telephone Company
St. Louis, Missouri

Issued: February 15, 1977

Effective: DEC 1 1978