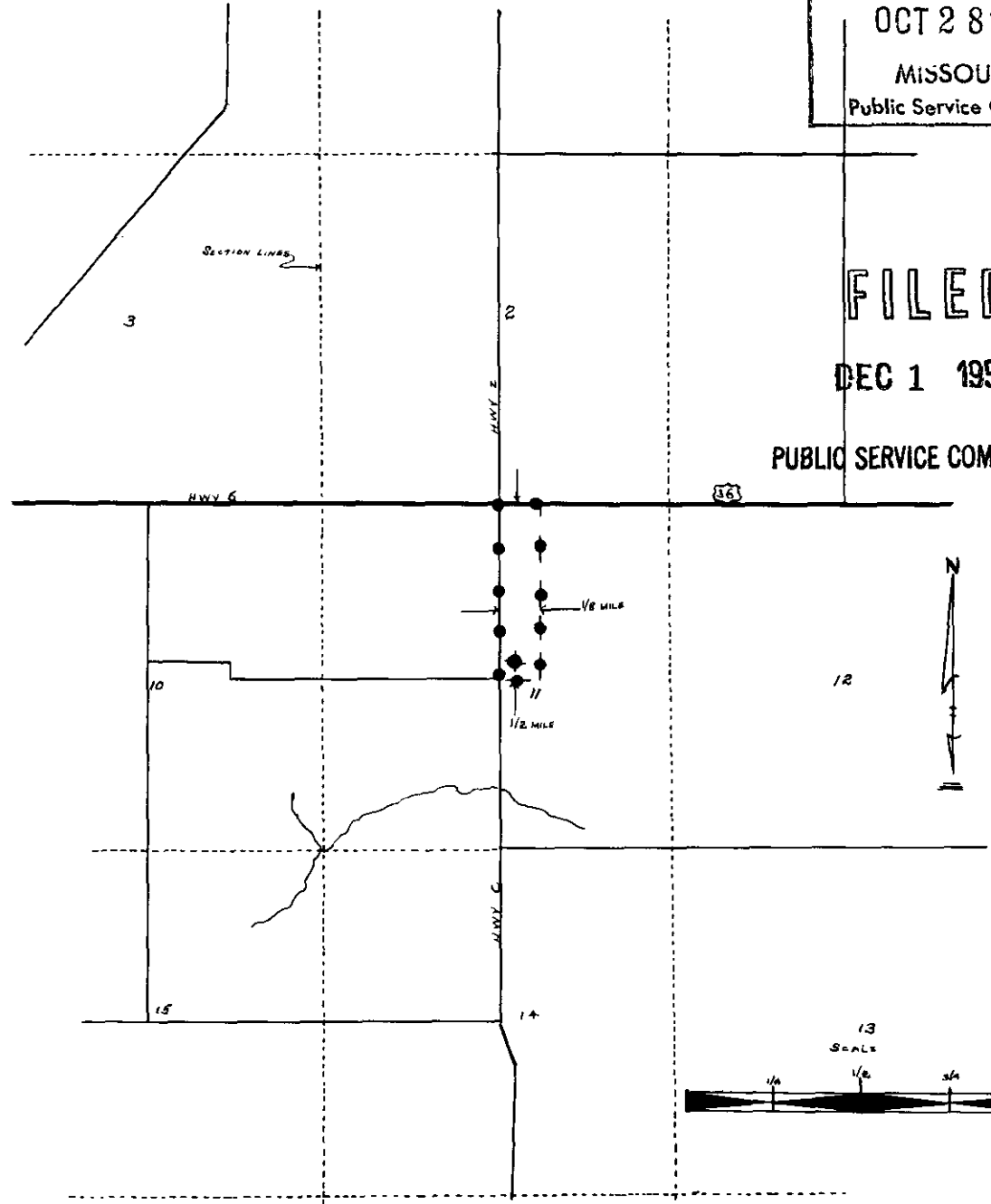


NO SUPPLEMENT TO THIS TARIFF WILL BE ISSUED EXCEPT FOR THE PURPOSE OF CANCELING THIS TARIFF.

San Antonio, Missouri
ORIGINAL SHEET 2

P. S. C. Mo. No. 17 BASE RATE AREA MAP

RECEIVED
OCT 28 1957
MISSOURI
Public Service Comm.



San Antonio, Mo.

PUBLIC SERVICE COMMISSION

FILED

DEC 1 1957

CODE
 BELL CENTRAL OFFICE: 
 BASE RATE AREA LIMITS: 

Issued: November 1, 1957

Effective: December 1, 1957

By E. G. GREBER, General Manager
Southwestern Bell Telephone Company
St. Louis, Mo.

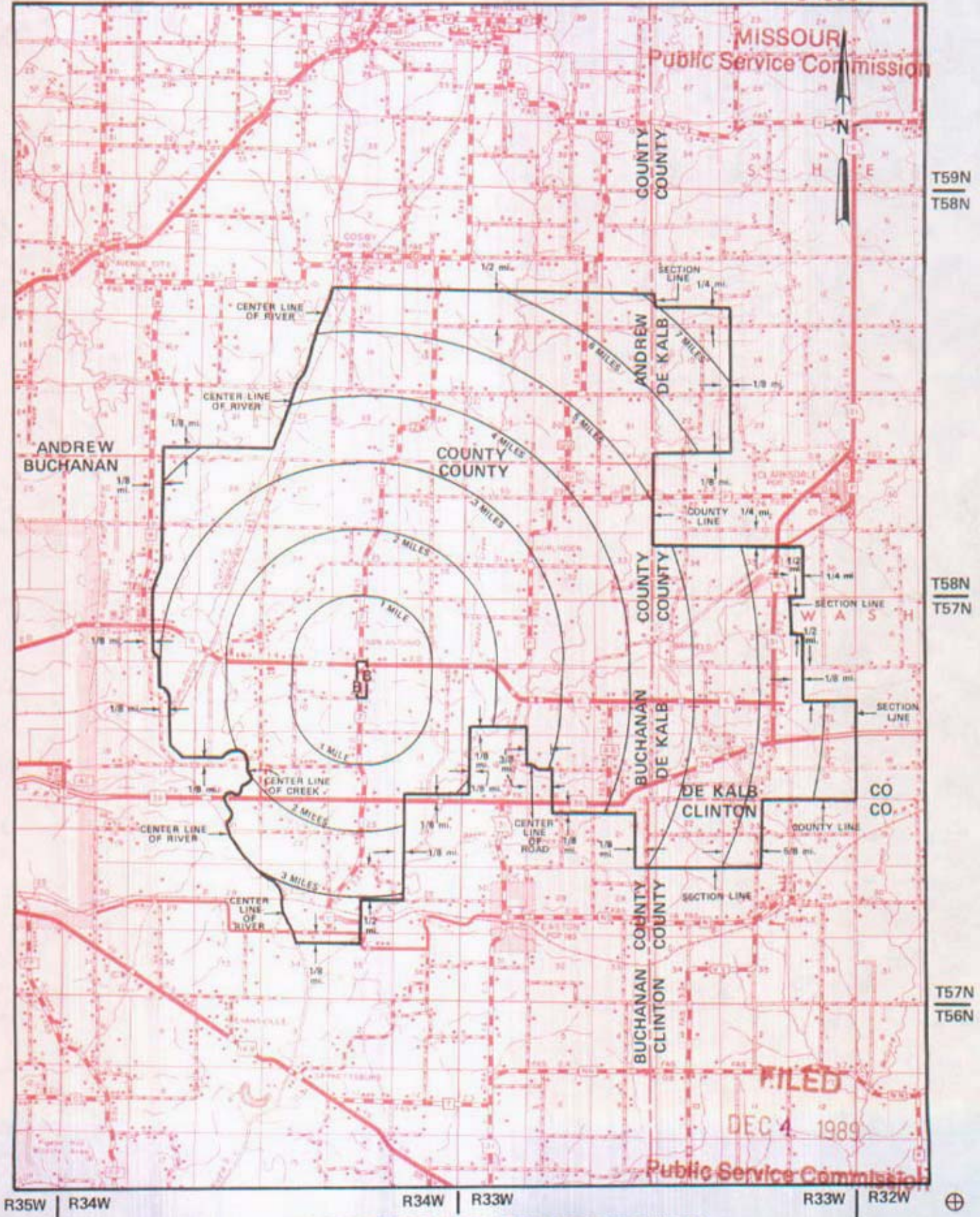
NO SUPPLEMENT TO THIS TARIFF WILL BE ISSUED EXCEPT FOR THE PURPOSE OF CANCELING THIS TARIFF.

San Antonio, Missouri

P. S. C. Mo. No. 17 EXCHANGE AREA MAP

7th REVISED SHEET 3
REPLACES 6th REVISED SHEET 3

NOV 3 1989



R35W | R34W | R34W | R33W | R33W | R32W

By R. D. BARRON, PRESIDENT, MISSOURI DIVISION
Southwestern Bell Telephone Company

FILED
DEC 4 1989

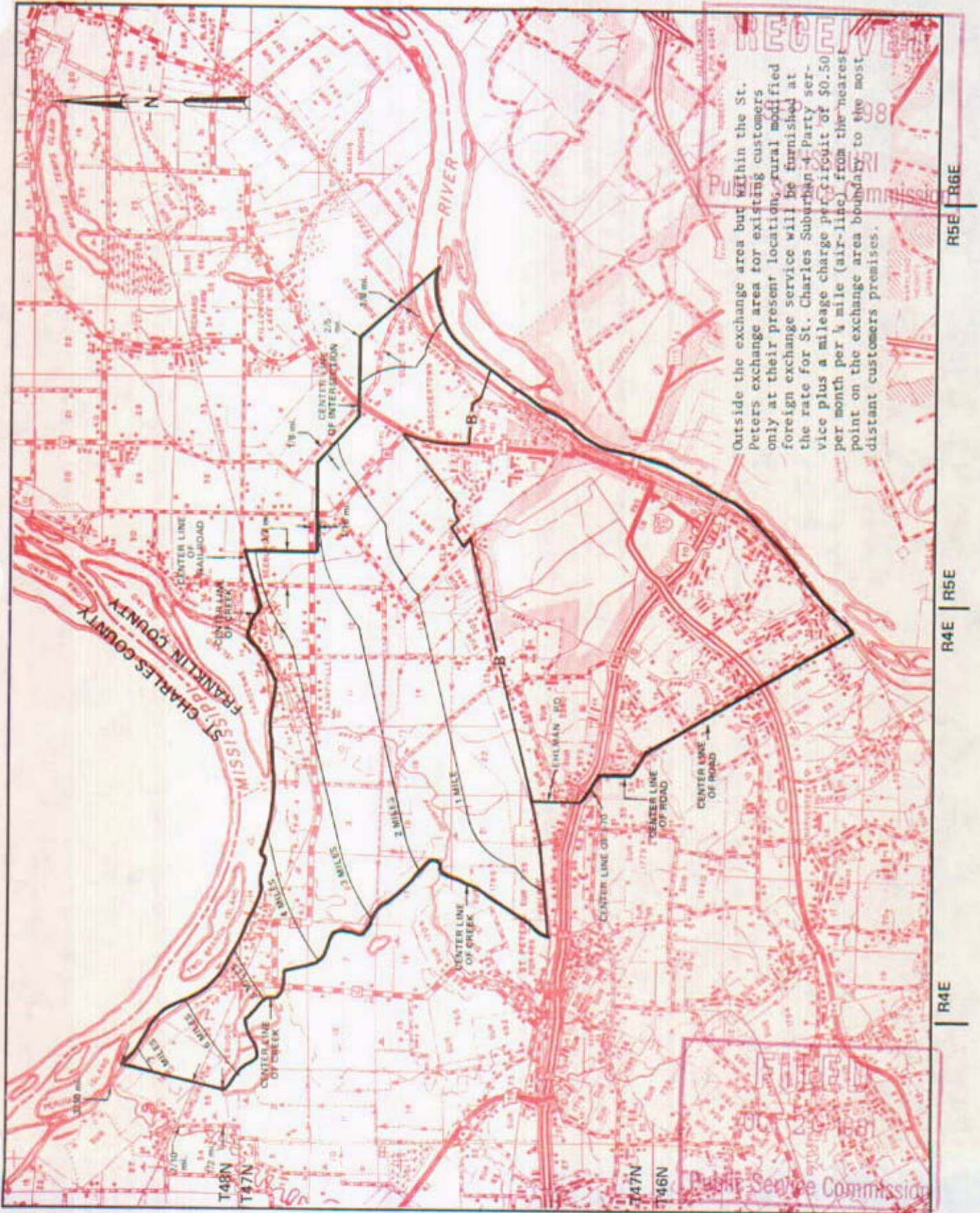
SBC PSC MO #17
St. Charles, Missouri
11th Revised Sheet 2
Replacing 10th Revised Sheet 2

Non-Scannable Map

(Is viewable in the Data Center
200 Madison Street, 1st Floor
Jefferson City MO)

EXCHANGE AREA MAP

20th REVISED SHEET 3
REPLACING 19th REVISED SHEET 3



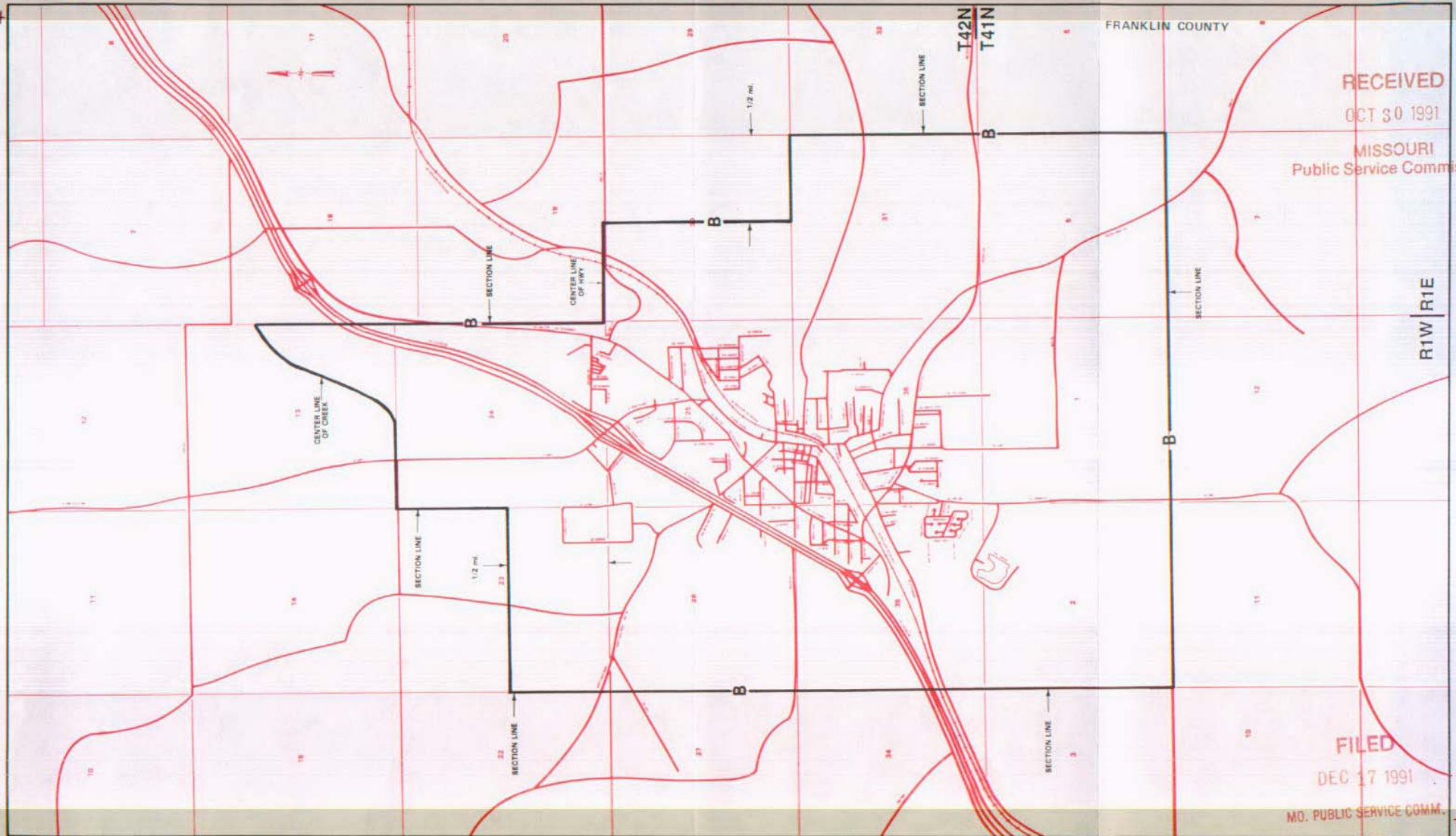
By R. R. SHOCKLEY, Vice President, Missouri
Southwestern Bell Telephone
St. Louis, Missouri

NO SUPPLEMENT TO THIS TARIFF WILL BE ISSUED EXCEPT FOR THE PURPOSE OF CANCELING THIS TARIFF.

P. S. C. Mo. No. 17 BASE RATE AREA MAP

St. Clair, Missouri

3rd REVISED SHEET 2
REPLACING 2nd REVISED SHEET 2



RECEIVED
OCT 30 1991
MISSOURI
Public Service Commission

FILED
DEC 17 1991
MO. PUBLIC SERVICE COMM.

Issued: NOV 0 8 1991

By R. D. BARRON, PRESIDENT, MISSOURI DIVISION
Southwestern Bell Telephone Company
St. Louis, Missouri

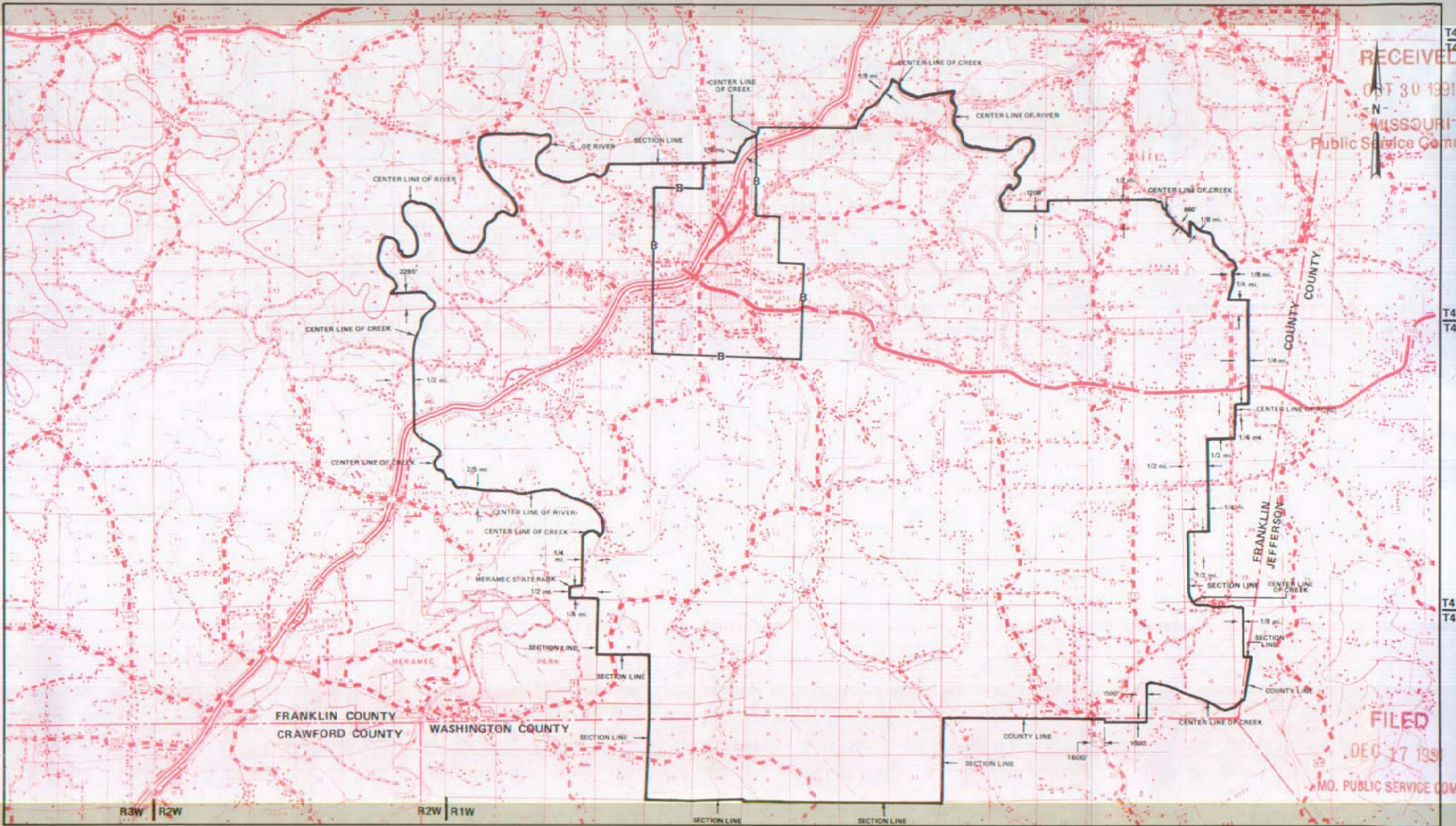
Effective: DEC 1 7 1991

NO SUPPLEMENT TO THIS TARIFF WILL BE ISSUED EXCEPT FOR THE PURPOSE OF CANCELING THIS TARIFF.

P. S. C. Mo. No. 17
EXCHANGE AREA MAP

St. Clair, Missouri

22nd REVISED SHEET 3
REPLACING 21st REVISED SHEET 3



T43N
T42N

T42N
T41N

T41N
T40N

R3W R2W

R2W R1W

R1W R1E

R1E R2E

R2E R3E

Issued: **NOV 08 1991**

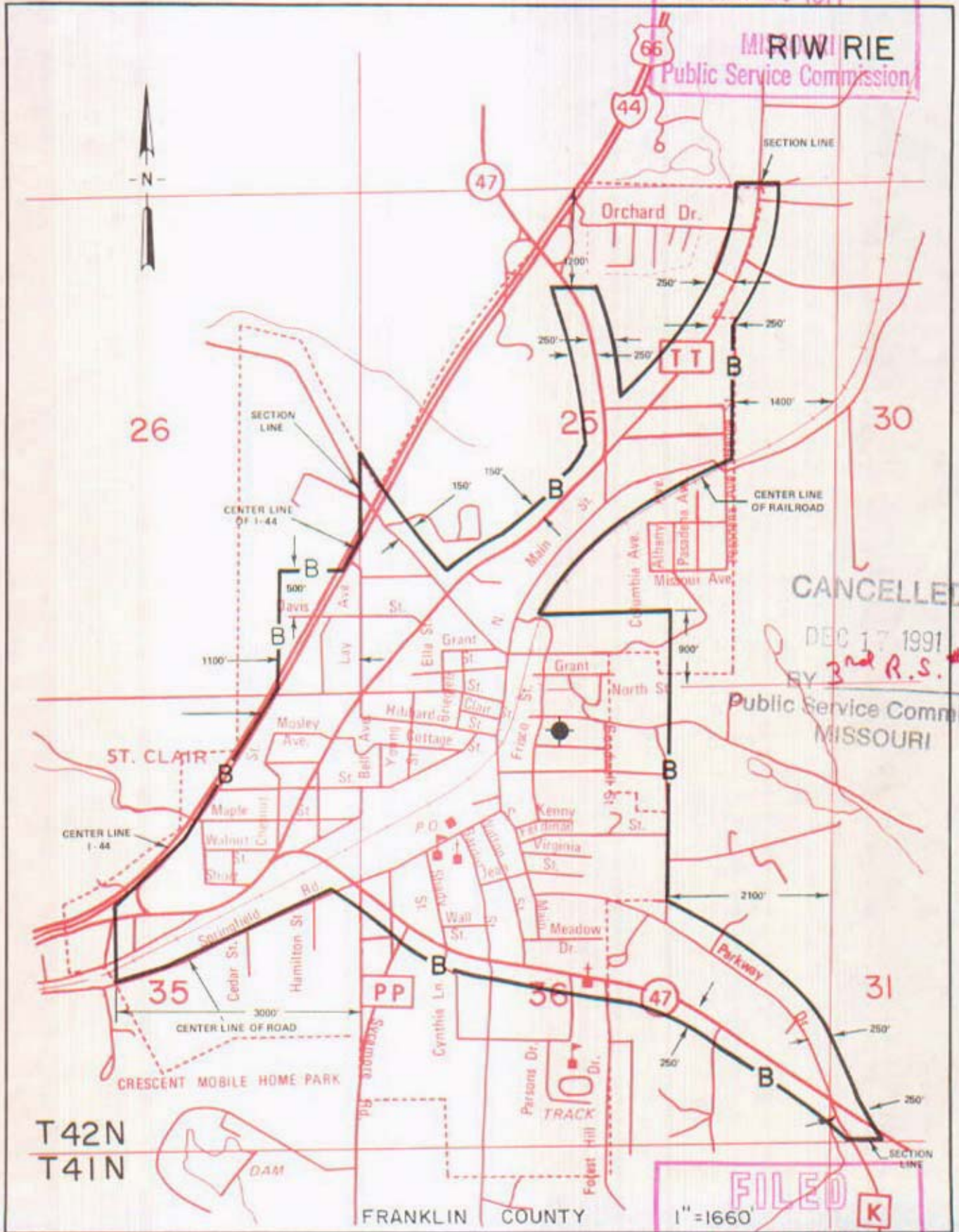
By R. D. BARRON, PRESIDENT, MISSOURI DIVISION
Southwestern Bell Telephone Company
St. Louis, Missouri

Effective: **DEC 17 1991**

NO SUPPLEMENT TO THIS TARIFF WILL BE ISSUED EXCEPT FOR THE PURPOSE OF CANCELING THIS TARIFF.

P. S. C. Mo. No. 17
BASE RATE AREA MAP

St. Clair, Missouri
RECEIVED
2nd REVISED SHEET 2
REPLACING 1st REVISED SHEET 2
MAY 20 1977



CANCELLED

DEC 17 1991
BY 3rd R.S. #2

Public Service Commission
MISSOURI

T42N
T41N

FILED
1" = 1660'
DEC 1 1977
K

By R. R. SHOCKLEY, Vice President, Missouri
Southwestern Bell Telephone Company
St. Louis, Missouri

Issued: May 23, 1977

Public Service Commission
Effective: DEC 1977

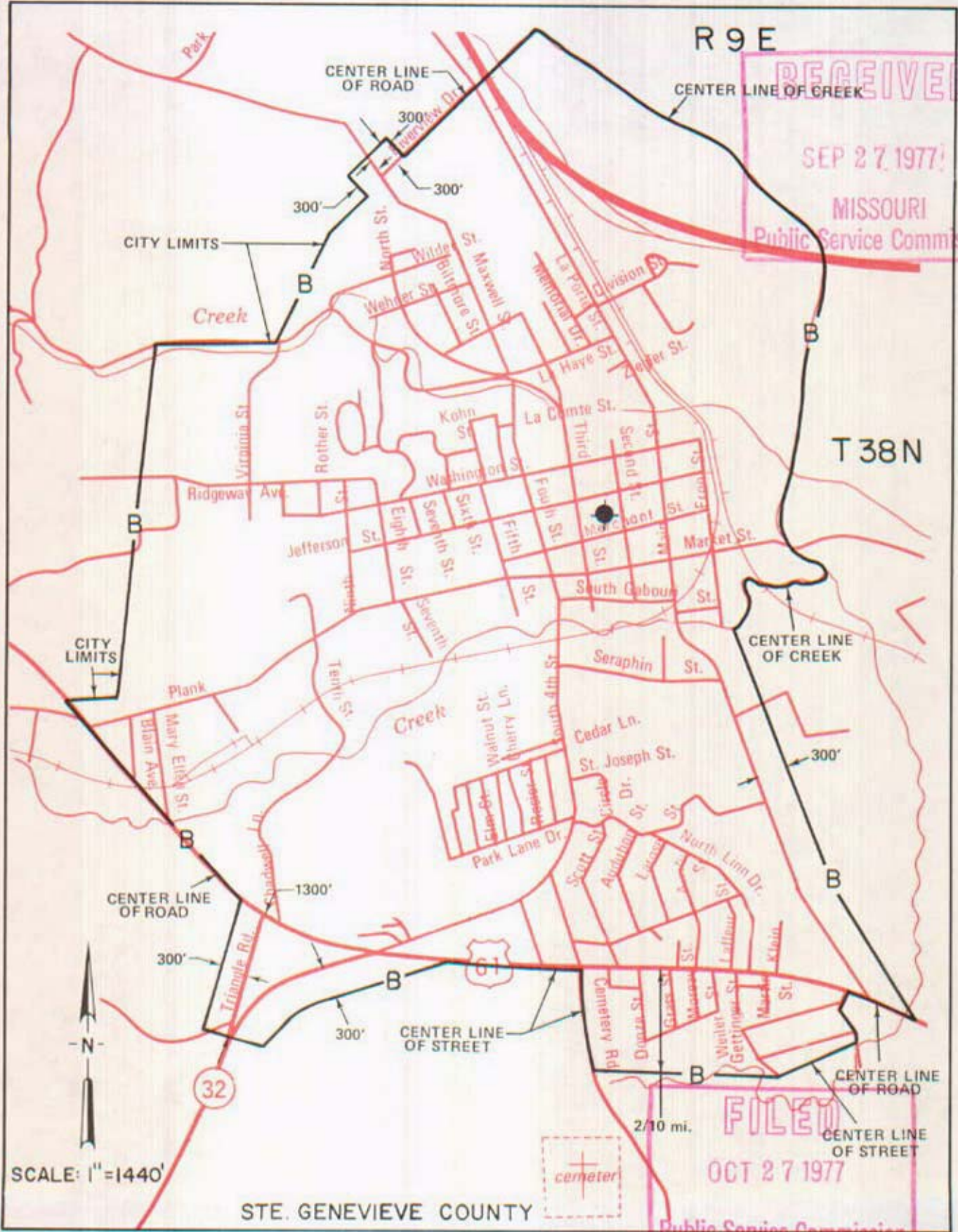
NO SUPPLEMENT TO THIS TARIFF WILL BE ISSUED EXCEPT FOR THE PURPOSE OF CANCELING THIS TARIFF.

P. S. C. Mo. No. 17

Ste. Genevieve, Missouri

1st REVISED SHEET 2
REPLACING ORIGINAL SHEET 2

BASE RATE AREA MAP



RECEIVED
 SEP 27 1977
 MISSOURI
 Public Service Commission

FILED
 OCT 27 1977
 Public Service Commission

STE. GENEVIEVE COUNTY

By R. R. SHOCKLEY, Vice President, Missouri

Southwestern Bell Telephone
St. Louis, Missouri

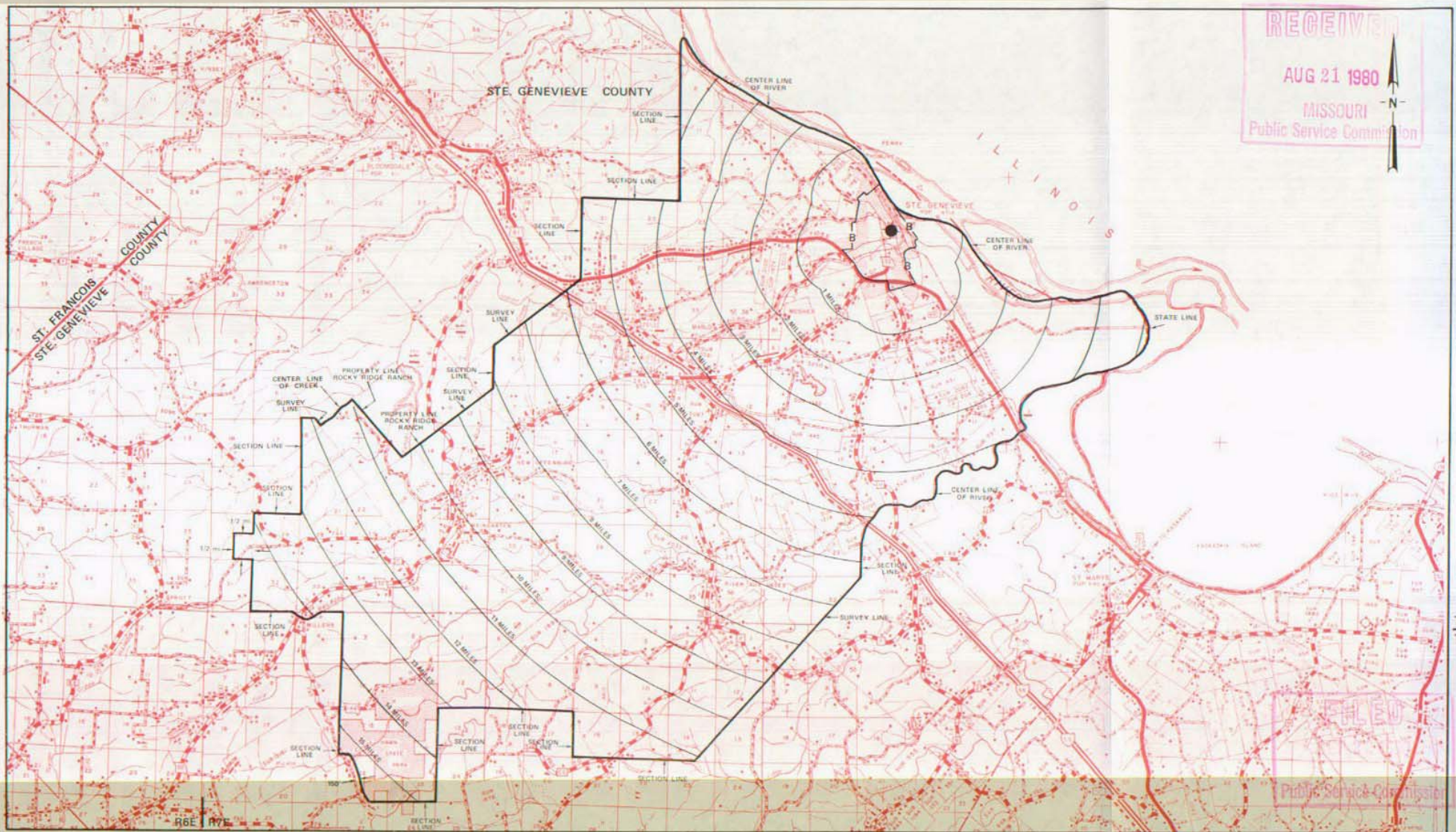
Issued: MAY 23 1977

Effective: OCT 27 1977

NO SUPPLEMENT TO THIS TARIFF WILL BE ISSUED EXCEPT FOR THE PURPOSE OF CANCELING THIS TARIFF.

P. S. C. Mo. No. 17
EXCHANGE AREA MAP

Ste. Genevieve, Missouri
8th REVISED SHEET 3
REPLACING 8th REVISED SHEET 3



RECEIVED
AUG 21 1980
MISSOURI
Public Service Commission

T39N
T38N

T38N
T37N

T37N
T36N

By R. R. SHOCKLEY, Vice President, Missouri
Southwestern Bell Telephone Company
St. Louis, Missouri

R7E | R8E

R8E | R9E

R9E | R10E

R10E | R11E

Issued: AUG 21, 1980

Effective: SEPT 22, 1980

NO SUPPLEMENT TO THIS TARIFF WILL
BE ISSUED EXCEPT FOR THE PURPOSE OF
CANCELING THIS TARIFF.

P. S. C. Mo. No. 17

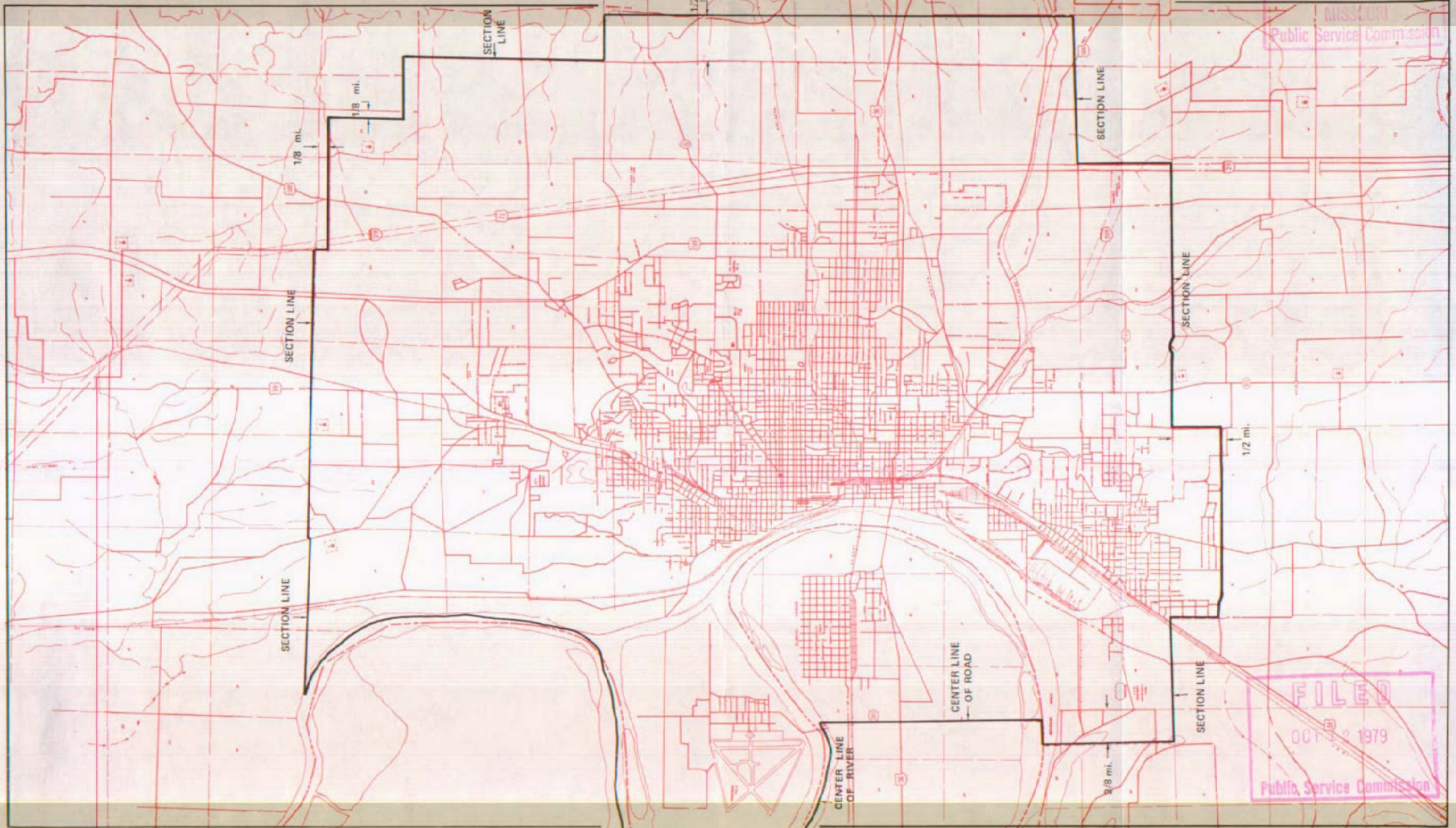
St. Joseph, Missouri-Elwood, Kansas

BASE RATE AREA MAP

6th REVISED SHEET 2
REPLACING 5th REVISED SHEET 2

SEP 12 1979

MISSOURI
Public Service Commission



By R. R. SHOCKLEY, Vice President, Missouri
Southwestern Bell Telephone Company
St. Louis, Missouri

Issued: SEP 12 1979

Effective: OCT 12 1979

FILED
OCT 12 1979
Public Service Commission

No supplement to this tariff will be issued except for the purpose of canceling this tariff.

ST. LOUIS METROPOLITAN EXCHANGE
4th Revised Sheet 1
Replacing 3rd Revised Sheet 1

RECEIVED

SOUTHWESTERN BELL TELEPHONE COMPANY
METROPOLITAN EXCHANGE TARIFF
Superseding All Tariffs Previously Issued

SEP 30 1993

- I. St. Louis Metropolitan Exchange Service
 - A. General

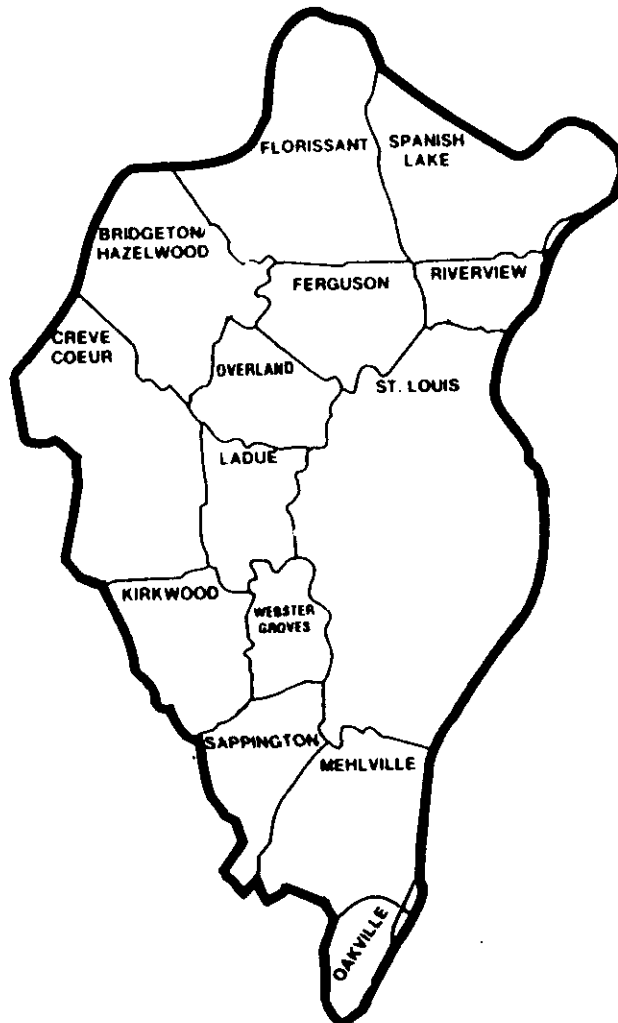
MO. PUBLIC SERVICE COMM.

(CT)(RT)(C)
(CT)(RT)

In the St. Louis Metropolitan Exchange there is a Principal St. Louis Zone, a group of Metropolitan Calling Area-1 (MCA-1) Zones and a group of Metropolitan Calling Area-2 (MCA-2) Zones.

The rates specified for each zone in the Metropolitan Exchange entitle the customer to local service within the primary service area specified for that zone.

- B. Zones Included in the Metropolitan Exchange
The following schematic diagram shows the St. Louis Metropolitan Exchange.



FILED

NOV 2 1993
92-306
MO. PUBLIC SERVICE COMM.

Issued: OCT 01 1993

Effective: NOV 02 1993

By D. R. KAESLOEFER, Division Manager-Regulatory & Industry Relations
Southwestern Bell Telephone Company
St. Louis, Missouri

SBC PSC MO #17
St. Louis Metropolitan Exchange
Bridgeton Zone
14th Revised Sheet 15
Replacing 13th Revised Sheet 15

Non-Scannable Map

(Is viewable in the Data Center
200 Madison Street, 1st Floor
Jefferson City MO)

SBC PSC MO #17

St. Louis Metropolitan Exchange

Creve Coeur Zone

20th Revised Sheet 7

Replacing 19th Revised Sheet 7

Non-Scannable Map

(Is viewable in the Data Center
200 Madison Street, 1st Floor
Jefferson City MO)

SBC PSC MO #17
St. Louis Metropolitan Exchange
Ferguson Zone
8th Revised Sheet 8
Replacing 7th Revised Sheet 8

Non-Scannable Map

(Is viewable in the Data Center
200 Madison Street, 1st Floor
Jefferson City MO)

SBC PSC MO #17

St. Louis Metropolitan Exchange

Florissant Zone

11th Revised Sheet 9

Replacing 10th Revised Sheet 9

Non-Scannable Map

(Is viewable in the Data Center
200 Madison Street, 1st Floor
Jefferson City MO)

SBC PSC MO #17
St. Louis Metropolitan Exchange
Kirkwood Zone
14th Revised Sheet 10
Replacing 13th Revised Sheet 10

Non-Scannable Map

(Is viewable in the Data Center
200 Madison Street, 1st Floor
Jefferson City MO)

SBC PSC MO #17

St. Louis Metropolitan Exchange

Ladue Zone

13th Revised Sheet 11

Replacing 12th Revised Sheet 11

Non-Scannable Map

(Is viewable in the Data Center
200 Madison Street, 1st Floor
Jefferson City MO)

SBC PSC MO #17
St. Louis Metropolitan Exchange
Mehlville Zone
10th Revised Sheet 12
Replacing 9th Revised Sheet 12

Non-Scannable Map

(Is viewable in the Data Center
200 Madison Street, 1st Floor
Jefferson City MO)

SBC PSC MO #17
St. Louis Metropolitan Exchange
Oakville Zone
6th Revised Sheet 13
Replacing 5th Revised Sheet 13

Non-Scannable Map

(Is viewable in the Data Center
200 Madison Street, 1st Floor
Jefferson City MO)

SBC PSC MO #17
St. Louis Metropolitan Exchange
Overland Zone
9th Revised Sheet 14
Replacing 8th Revised Sheet 14

Non-Scannable Map

(Is viewable in the Data Center
200 Madison Street, 1st Floor
Jefferson City MO)

SBC PSC MO #17
St. Louis Metropolitan Exchange
Riverview Zone
9th Revised Sheet 16
Replacing 8th Revised Sheet 16

Non-Scannable Map

(Is viewable in the Data Center
200 Madison Street, 1st Floor
Jefferson City MO)

SBC PSC MO #17
St. Louis Metropolitan Exchange
St. Louis Zone
14th Revised Sheet 17
Replacing 13th Revised Sheet 17

Non-Scannable Map

(Is viewable in the Data Center
200 Madison Street, 1st Floor
Jefferson City MO)

SBC PSC MO #17
St. Louis Metropolitan Exchange
Sappington Zone
9th Revised Sheet 18
Replacing 8th Revised Sheet 18

Non-Scannable Map

(Is viewable in the Data Center
200 Madison Street, 1st Floor
Jefferson City MO)

SBC PSC MO #17
St. Louis Metropolitan Exchange
Spanish Lake Zone
12th Revised Sheet 19
Replacing 11th Revised Sheet 19

Non-Scannable Map

(Is viewable in the Data Center
200 Madison Street, 1st Floor
Jefferson City MO)

SBC PSC MO #17
St. Louis Metropolitan Exchange
Webster Grove Zone
10th Revised Sheet 20
Replacing 9th Revised Sheet 20

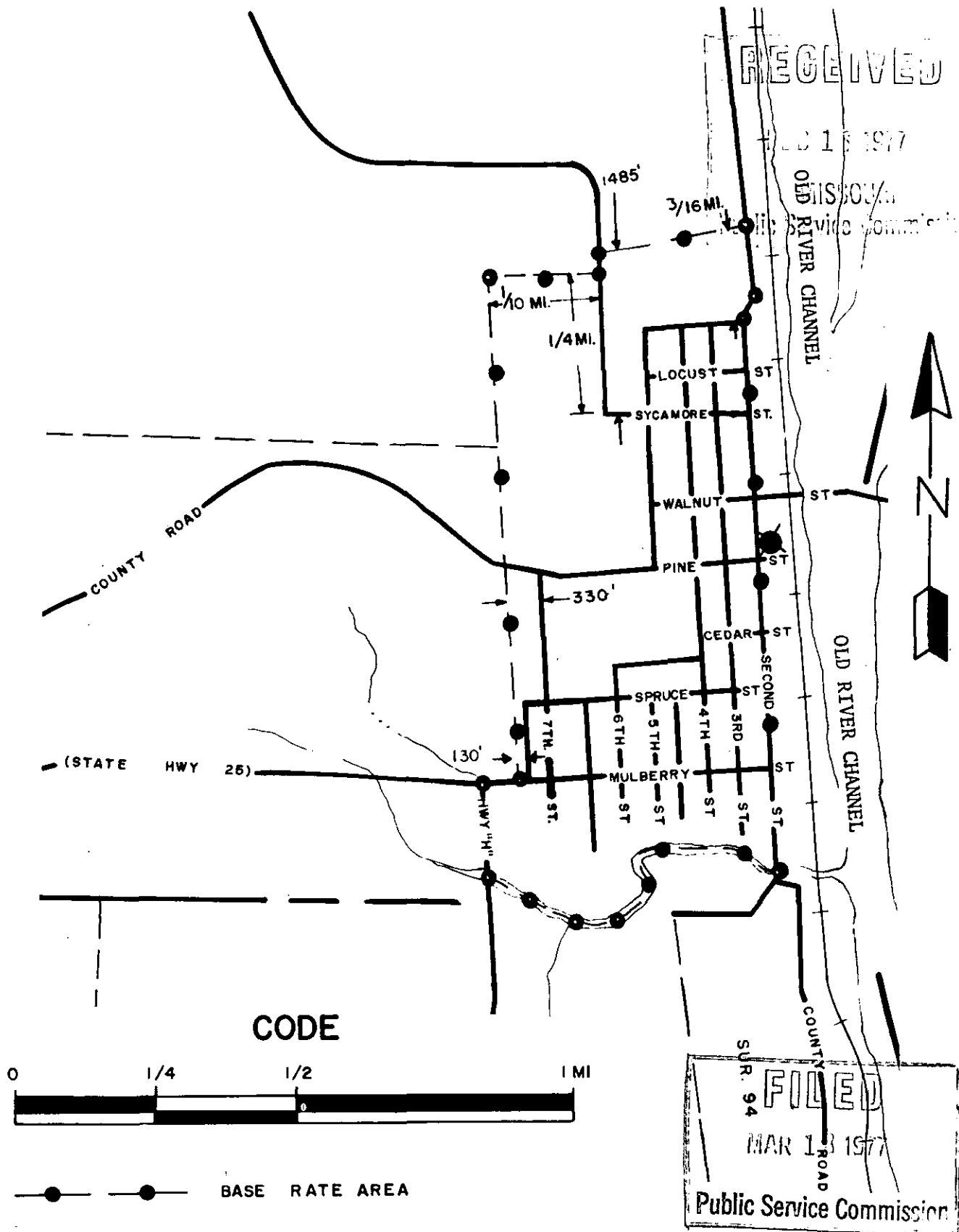
Non-Scannable Map

(Is viewable in the Data Center
200 Madison Street, 1st Floor
Jefferson City MO)

NO. SUPPLEMENT TO THIS TARIFF WILL BE ISSUED EXCEPT FOR THE PURPOSE OF CANCELING THIS TARIFF.

St. Marys, Missouri
1st REVISED SHEET 2
REPLACING ORIGINAL SHEET 2

P. S. C. Mo. No. 17
BASE RATE AREA MAP



Issued: February 18, 1977

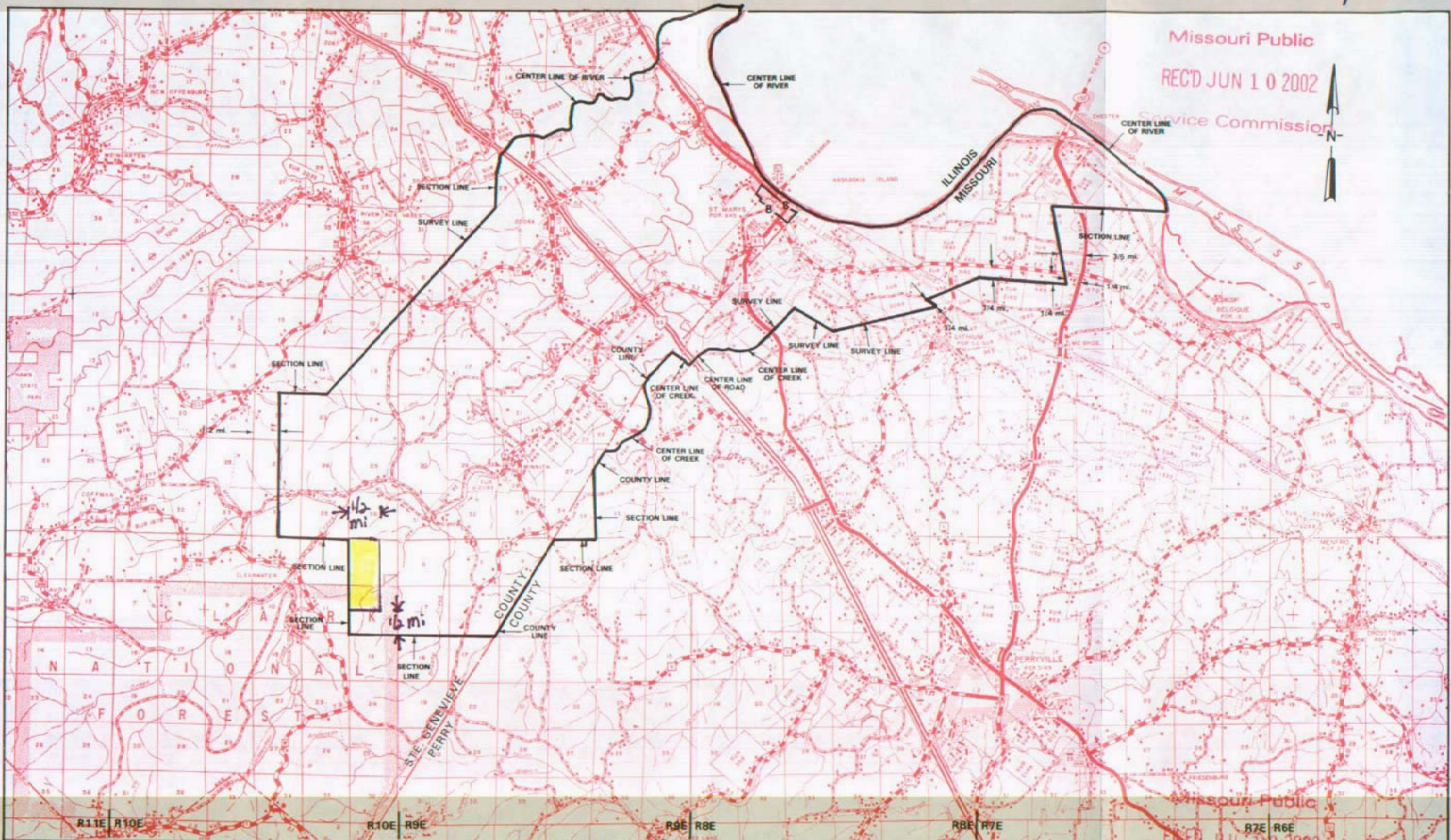
Effective: March 18, 1977

By R. R. SHOCKLEY, Vice President — Missouri
Southwestern Bell Telephone Company
St. Louis, Missouri

NO SUPPLEMENT TO THIS TARIFF WILL BE ISSUED EXCEPT FOR THE PURPOSE OF CANCELING THIS TARIFF.

P. S. C. Mo. No. 17 EXCHANGE AREA MAP

St. Marys, Missouri
3rd REVISION SHEET 3
REPLACING 2nd REVISION SHEET 3



Missouri Public
REC'D JUN 10 2002

Service Commission

Missouri Public
FEB JUL 10 2002

Service Commission

June 10, 2002
Issued: ~~November 12, 1994~~

By R. D. BARRON, President, Missouri Division, Southwestern Bell Telephone Company, St. Louis, Missouri
JAN NEWTON, President, Missouri Company LP, d/b/a Southwestern Bell Telephone Company

July 10, 2002
Effective: ~~December 18, 1994~~

SEPPINGTON

see

St. Louis District Exchange Rates

under

St. Louis

June 1, 1937

SBC PSC MO #17
Scott City, Missouri
2nd Revised Sheet 2
Replacing 1st Revised Sheet 2

Non-Scannable Map

(Is viewable in the Data Center
200 Madison Street, 1st Floor
Jefferson City MO)

NO SUPPLEMENT TO THIS TARIFF WILL BE ISSUED EXCEPT FOR THE PURPOSE OF CANCELING THIS TARIFF.

P. S. C. Mo. No. 17

Scott City, Missouri

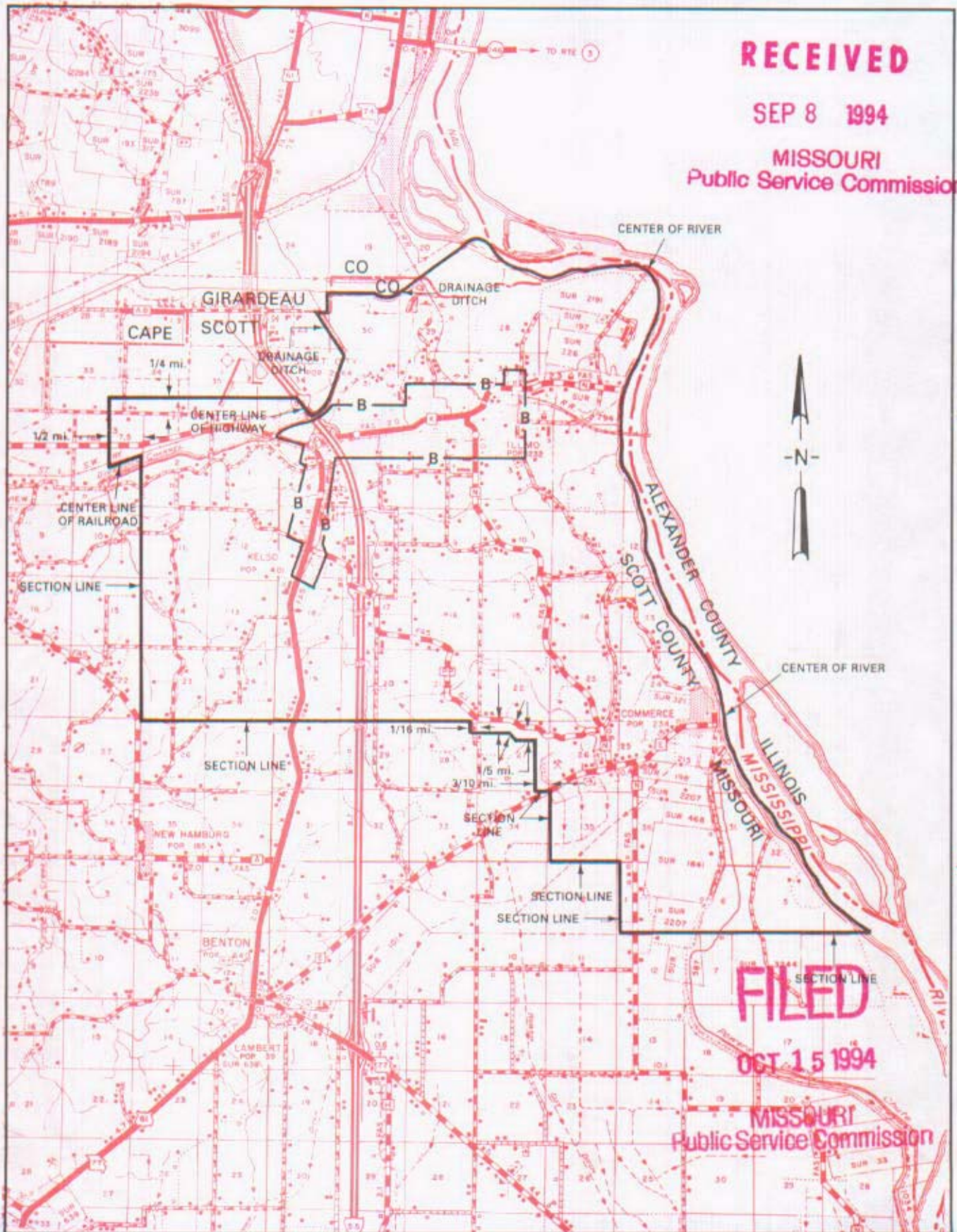
5th REVISED SHEET 3
REPLACING 4th REVISED SHEET 3

EXCHANGE AREA MAP

RECEIVED

SEP 8 1994

MISSOURI
Public Service Commission



T30N
T29N

T29N
T28N

FILED

OCT 15 1994

MISSOURI
Public Service Commission

R13E | R14E

R14E | R15E

Issued: September 15, 1994

By HORACE WILKINS, JR., President-Missouri
Southwestern Bell Telephone Company
St. Louis, Missouri

Effective: October 15, 1994

NO SUPPLEMENT TO THIS TARIFF WILL BE ISSUED EXCEPT FOR THE PURPOSE OF CANCELING THIS TARIFF.

P. S. C. Mo. No. 17 EXCHANGE AREA MAP

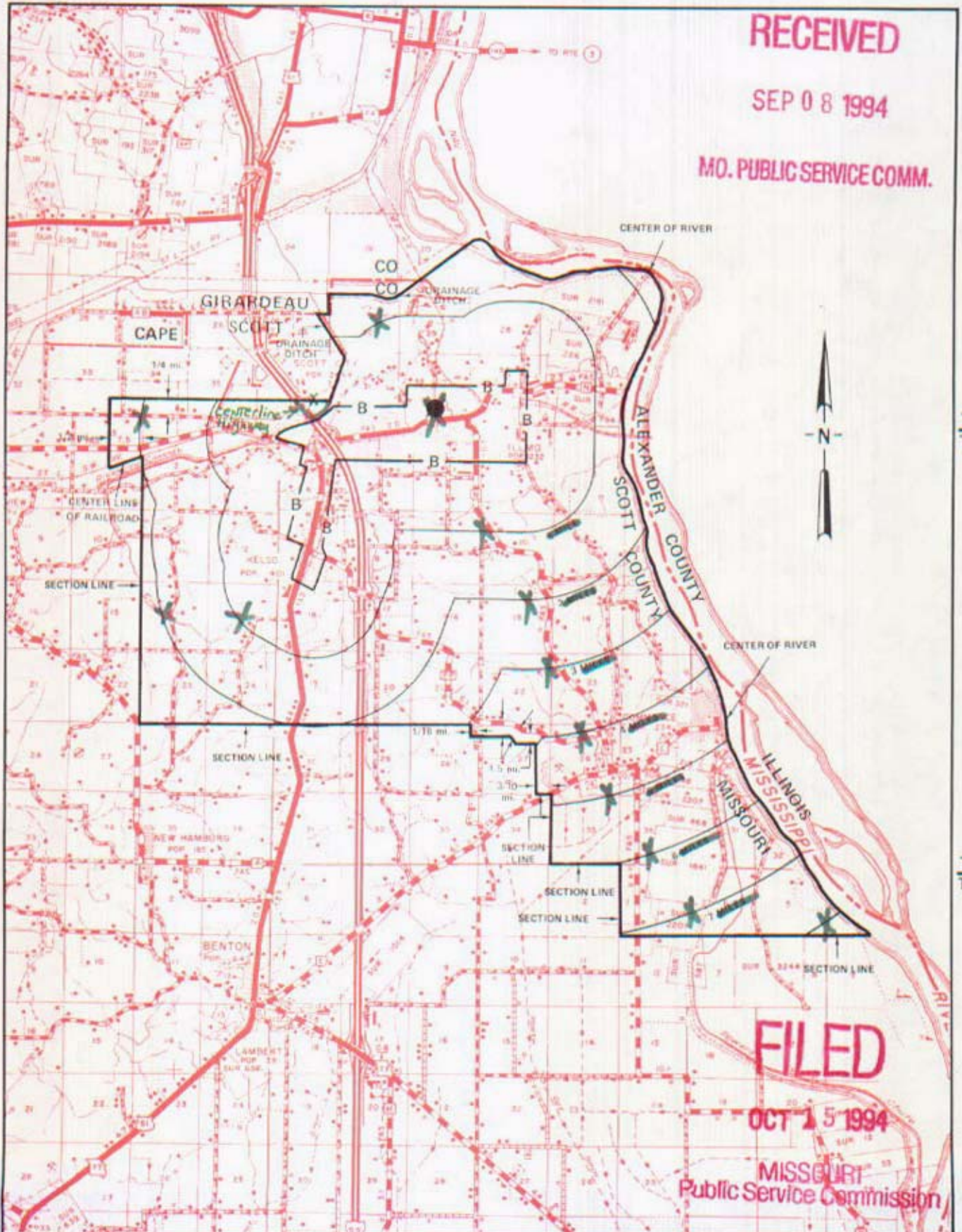
Scott City, Missouri

5th
4th
2nd
4th
REPLACING REVISED SHEET 3
REVISED SHEET 3

RECEIVED

SEP 08 1994

MO. PUBLIC SERVICE COMM.



T30N
T29N

T29N
T28N

FILED

OCT 15 1994

MISSOURI
Public Service Commission

SEP 15 1994

R13E | R14E

By *Horace Wilkins, Jr.*
R. R. SHOCKLEY, Vice President, Missouri
Southwestern Bell Telephone Company

R14E | R15E

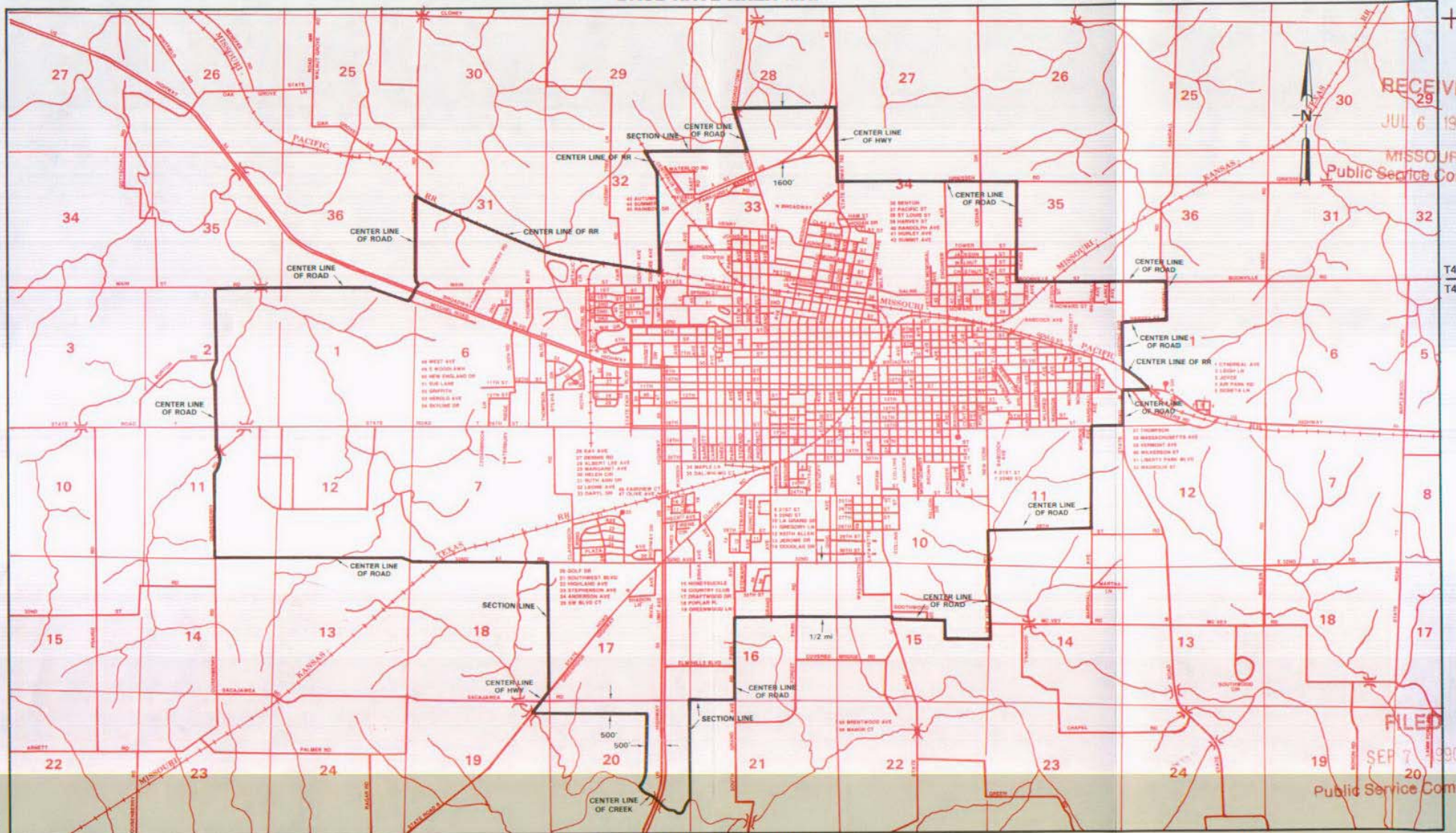
OCT 15 1994

~~DEC 1 1994~~

NO SUPPLEMENT TO THIS TARIFF WILL
BE ISSUED EXCEPT FOR THE PURPOSE OF
CANCELING THIS TARIFF.

P. S. C. Mo. No. 17 BASE RATE AREA MAP

Sedalia, Missouri
2nd REVISED SHEET 2
REPLACING 1st REVISED SHEET 2



RECEIVED
JUL 6 1990

MISSOURI
Public Service Commission

T46N
T45N

FILED
SEP 7 1990

Public Service Commission

Issued: JUL 09 1990

R22W | R21W

By R. D. BARRON, PRESIDENT, MISSOURI DIVISION
Southwestern Bell Telephone Company
St. Louis, Missouri

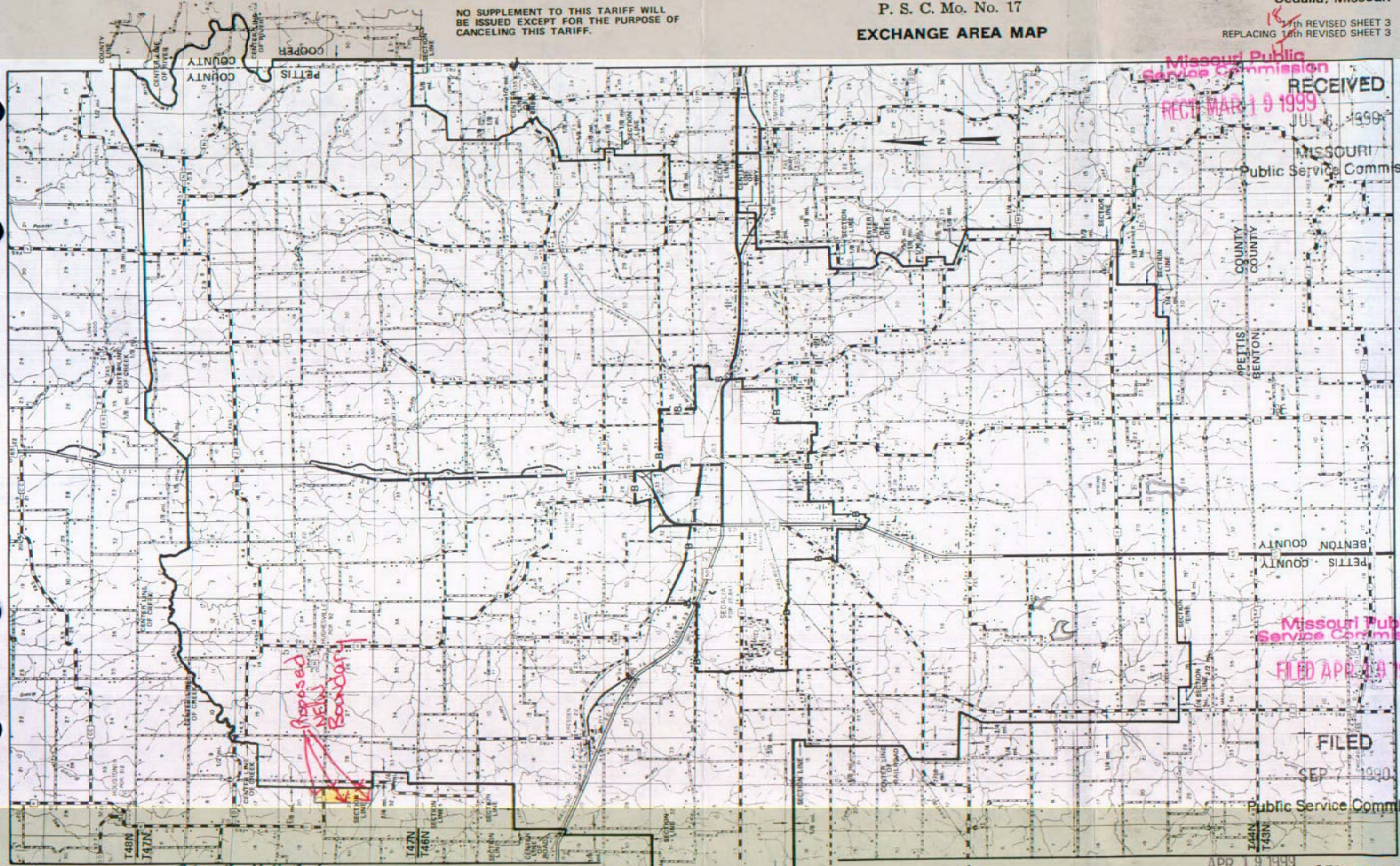
R21W | R20W

Effective: SEP 07 1990

NO SUPPLEMENT TO THIS TARIFF WILL BE ISSUED EXCEPT FOR THE PURPOSE OF CANCELING THIS TARIFF.

P. S. C. Mo. No. 17 EXCHANGE AREA MAP

Sedalia, Missouri
17th REVISED SHEET 3
REPLACING 16th REVISED SHEET 3



Missouri Public Service Commission
RECEIVED
REC'D MAR 19 1999
JUL 6 1999

MISSOURI Public Service Commission

Missouri Public Service Commission
FILED APR 19 1999

FILED

Public Service Commission

APR 19 1999
SEP 07 1990

MAR 19 1999
~~JUL 06 1990~~

By *Frisa, Hill, Sedam*
G. BARRON, PRESIDENT, MISSOURI DIVISION
Southwestern Bell Telephone Company
St. Louis, Missouri

Issued: _____

Effective: _____

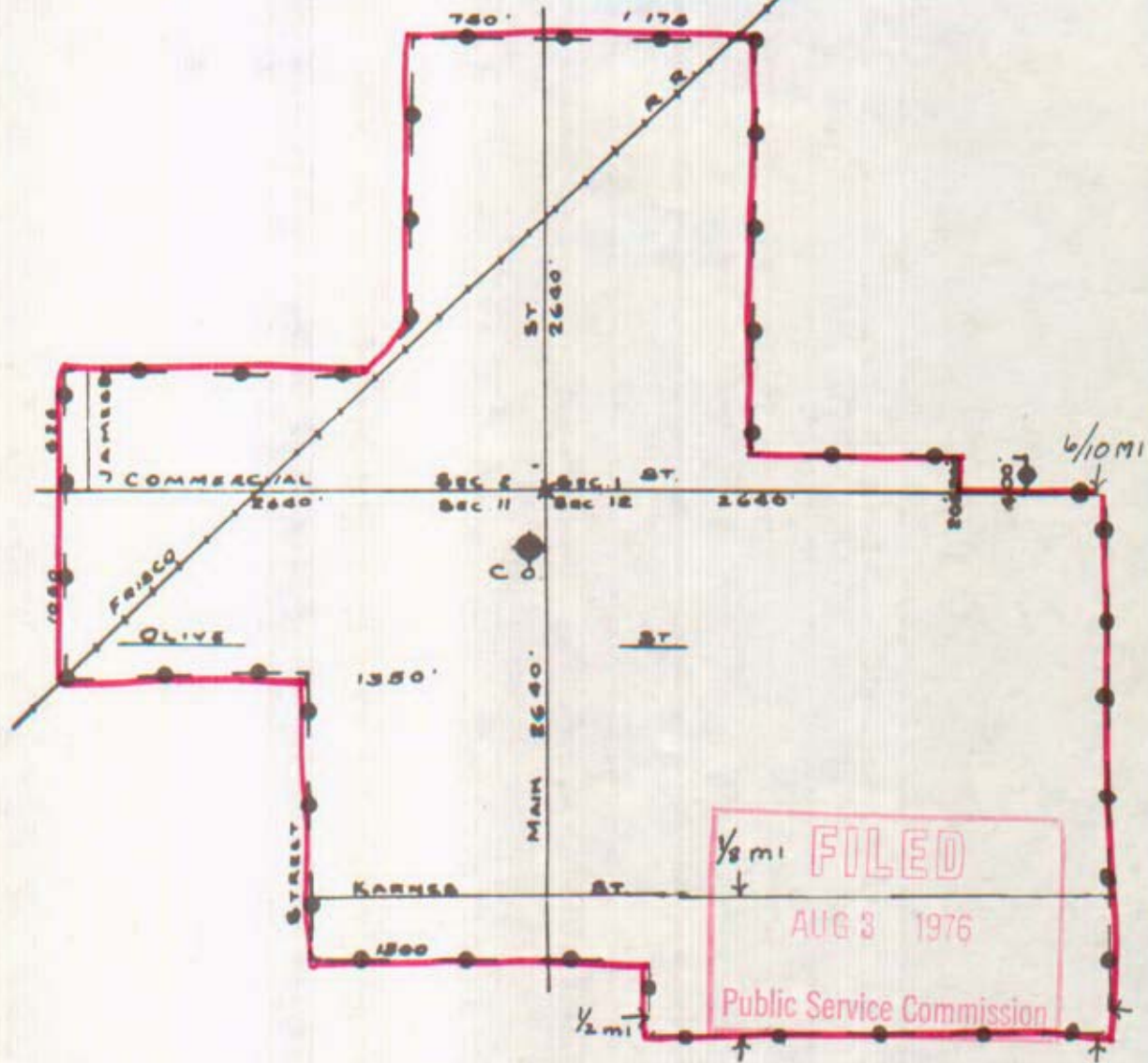
NO SUPPLEMENT TO THIS TARIFF WILL BE ISSUED EXCEPT FOR THE PURPOSE OF CANCELING THIS TARIFF.

Base Rate Area

P. S. C. Mo. No. 17

BASE RATE AREA MAP

RECEIVED
JUN 11 1976
MISSOURI
Public Service Commission



1/2 mi FILED
AUG 3 1976
Public Service Commission

BASE RATE AREA LIMITS: ●●●●●
SCALE: 5 INCHES = 1 MILE

Issued: July 2, 1976

By R. R. SHOCKLEY, Vice President — Missouri
Southwestern Bell Telephone Company
St. Louis, Missouri

Effective: August 3, 1976

Senath, MO.

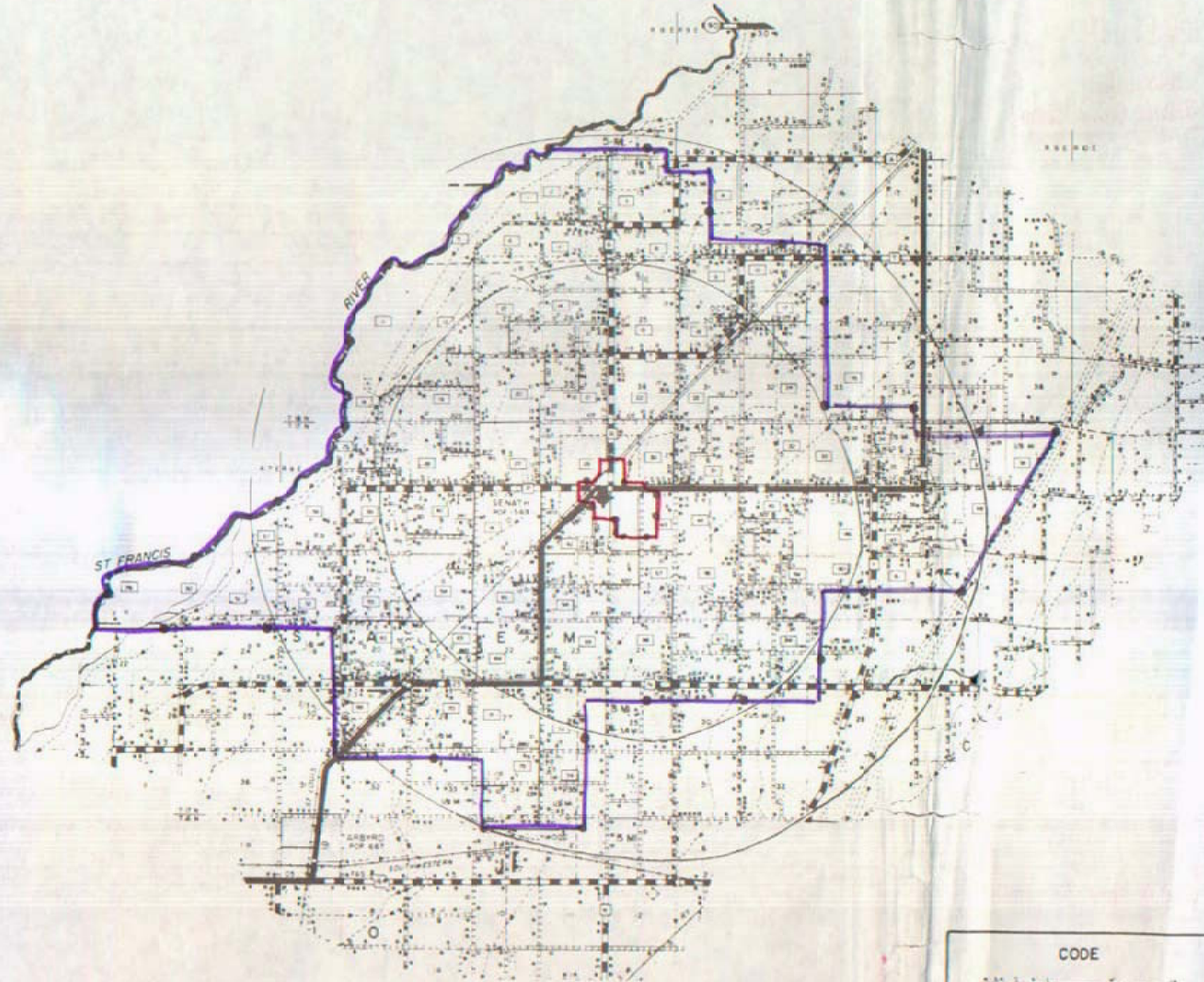
NO SUPPLEMENT TO THIS TARIFF WILL
BE ISSUED EXCEPT FOR THE PURPOSE OF
CANCELING THIS TARIFF.

P. S. C. Mo. No. 17
EXCHANGE AREA MAP

Senath, Missouri
3rd REVISED SHEET 3
REPLACING 2nd REVISED SHEET 3

— Base Rate Area
— Exchange Boundary

SENVATH, MO.



CODE

- EXCHANGE BOUNDARY
- BASE RATE AREA
- ◆ Central Office

Issued: July 2, 1976

Effective: August 3, 1976

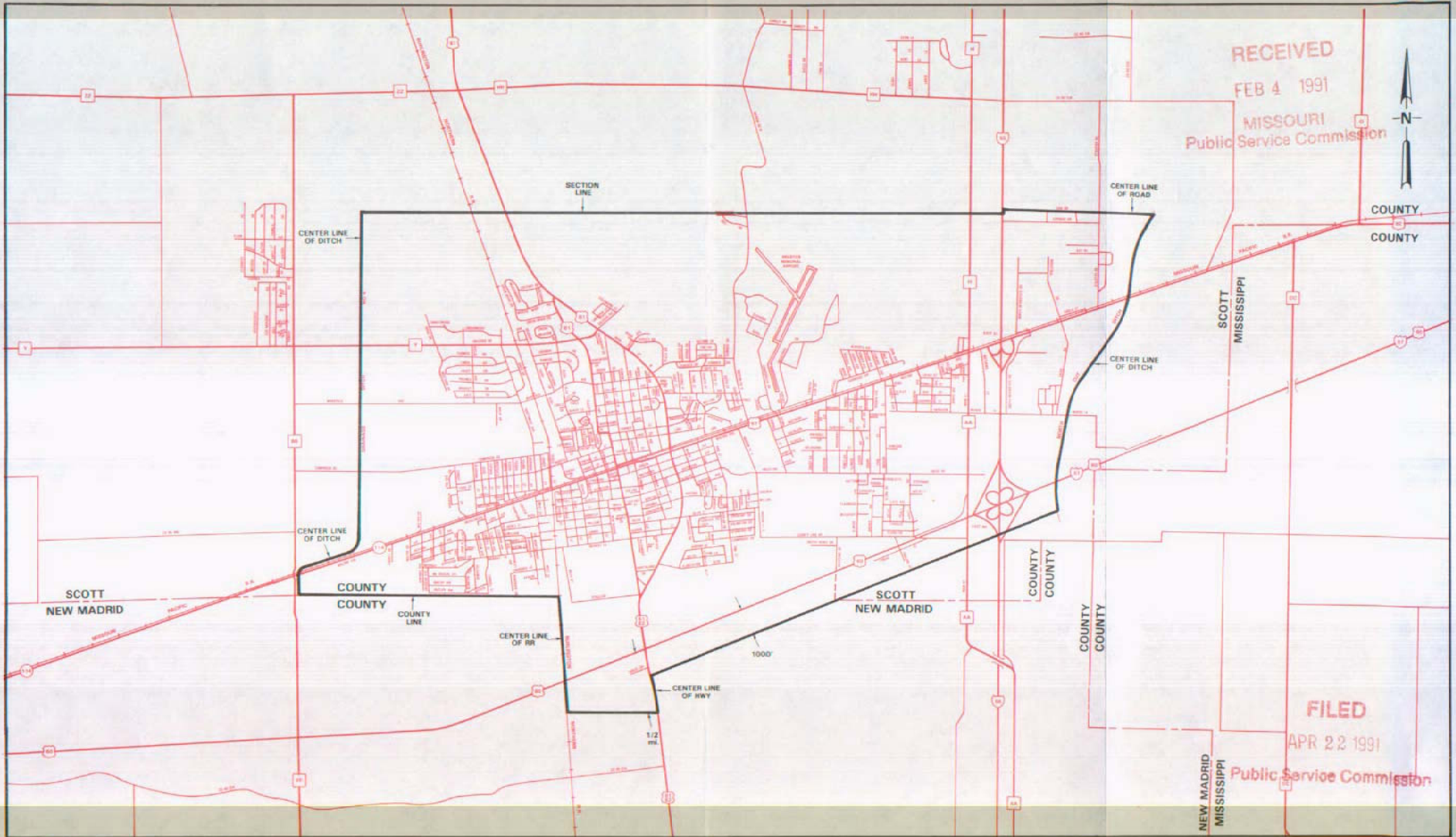
By R. R. SHOCKLEY, Vice President — Missouri
Southwestern Bell Telephone Company
St. Louis, Missouri

NO SUPPLEMENT TO THIS TARIFF WILL BE ISSUED EXCEPT FOR THE PURPOSE OF CANCELING THIS TARIFF.

P. S. C. Mo. No. 17
BASE RATE AREA MAP

Sikeston, Missouri

3rd REVISED SHEET 2
REPLACING 2nd REVISED SHEET 2



RECEIVED
FEB 4 1991
MISSOURI
Public Service Commission

FILED
APR 22 1991
Public Service Commission

FEB 11 1991

Issued: _____

By R. D. BARRON, PRESIDENT, MISSOURI DIVISION
Southwestern Bell Telephone Company
St. Louis, Missouri

APR 22 1991

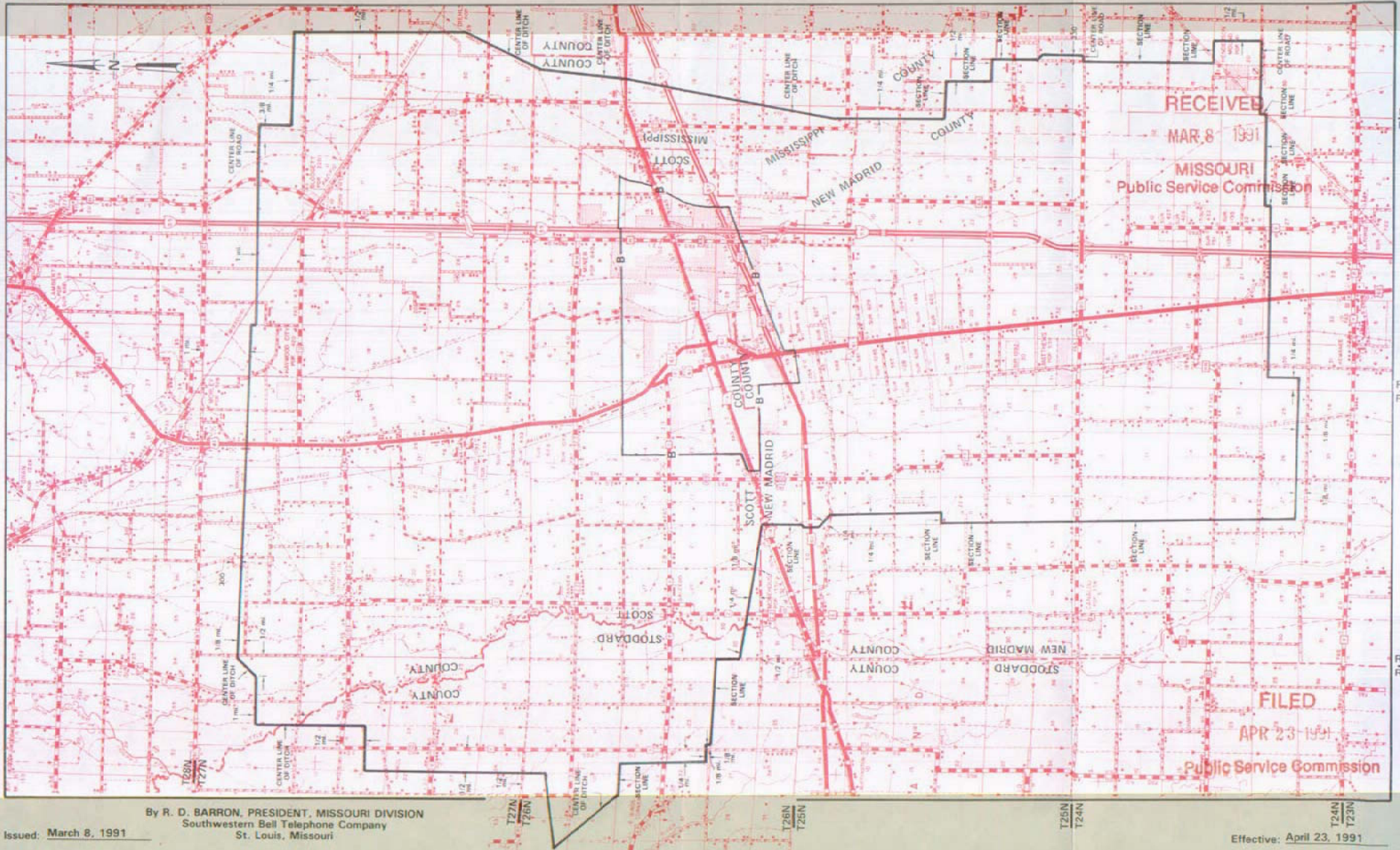
Effective: _____

P. S. C. Mo. No. 17
EXCHANGE AREA MAP

Sikeston, Missouri

10th REVISED SHEET 3
REPLACING 9th REVISED SHEET 3

NO SUPPLEMENT TO THIS TARIFF WILL
BE ISSUED EXCEPT FOR THE PURPOSE OF
CANCELING THIS TARIFF.

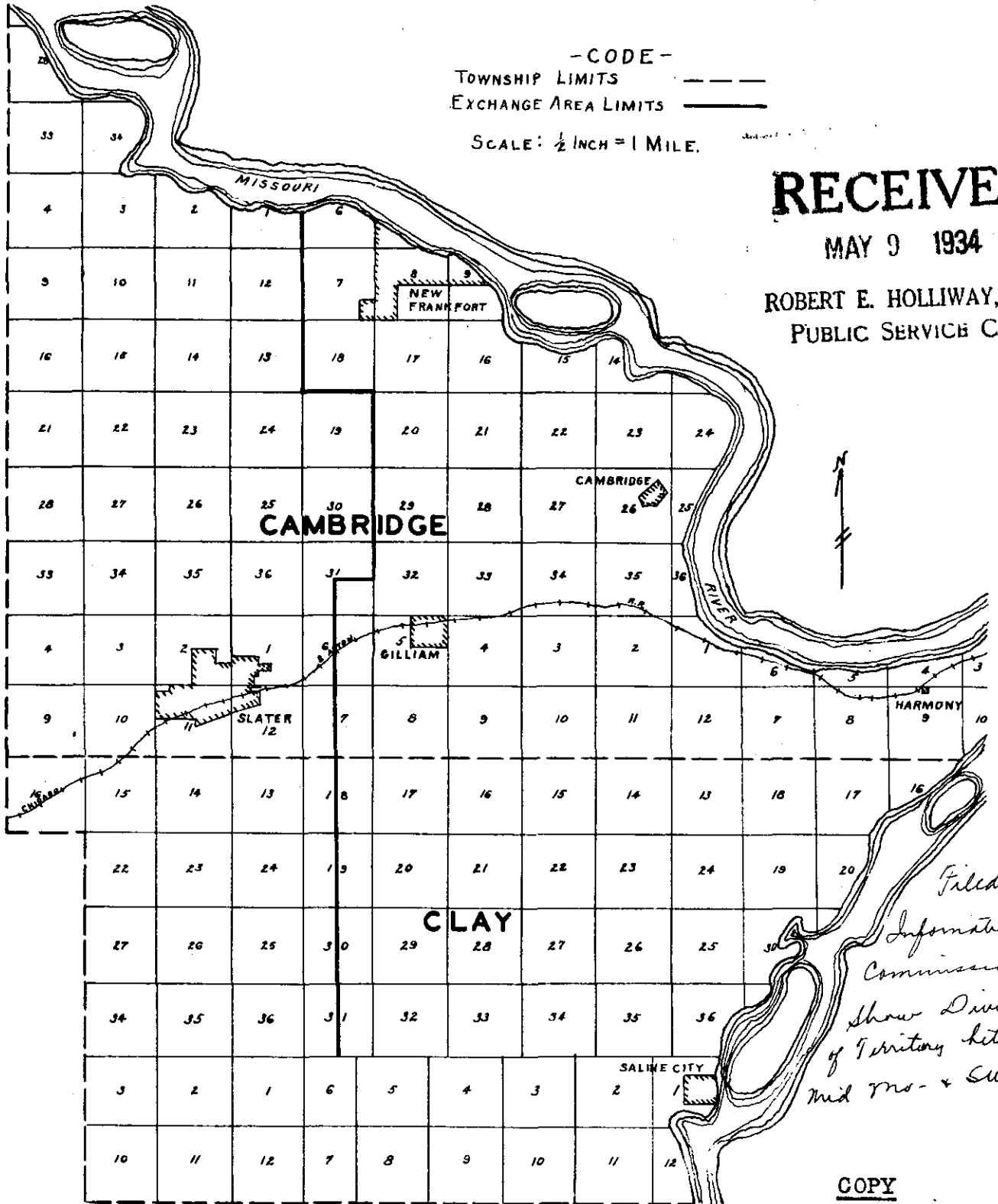


By R. D. BARRON, PRESIDENT, MISSOURI DIVISION
Southwestern Bell Telephone Company
St. Louis, Missouri

Issued: March 8, 1991

Effective: April 23, 1991

CAMBRIDGE and CLAY TOWNSHIPS, SALINE COUNTY, MO. Scale, 1/2" = 1 MI.



- CODE -
 TOWNSHIP LIMITS -----
 EXCHANGE AREA LIMITS _____
 SCALE: 1/2 INCH = 1 MILE.

RECEIVED

MAY 9 1934

ROBERT E. HOLLIWAY, Sec'y.
PUBLIC SERVICE COM.

*Filed for
 Information of
 Commission to
 show Division
 of Territory betw
 Mid Mo. + SW Bell.*

COPY

For the files of the Missouri
Public Service Commission

Approved for filing
Mid-Missouri Telephone Co.

(Sgd.) By Harold A. Jones
Manager

NO SUPPLEMENT TO THIS TARIFF WILL BE ISSUED EXCEPT FOR THE PURPOSE OF CANCELING THIS TARIFF.

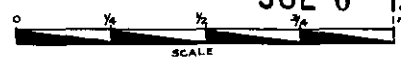
Slater, Missouri
ORIGINAL SHEET 2
REPLACING ORIGINAL SHEET 1-A

P. S. C.-Mo. No. 17
BASE RATE AREA MAP

RECEIVED
JUN 27 1950
MISSOURI
Public Service Comm.

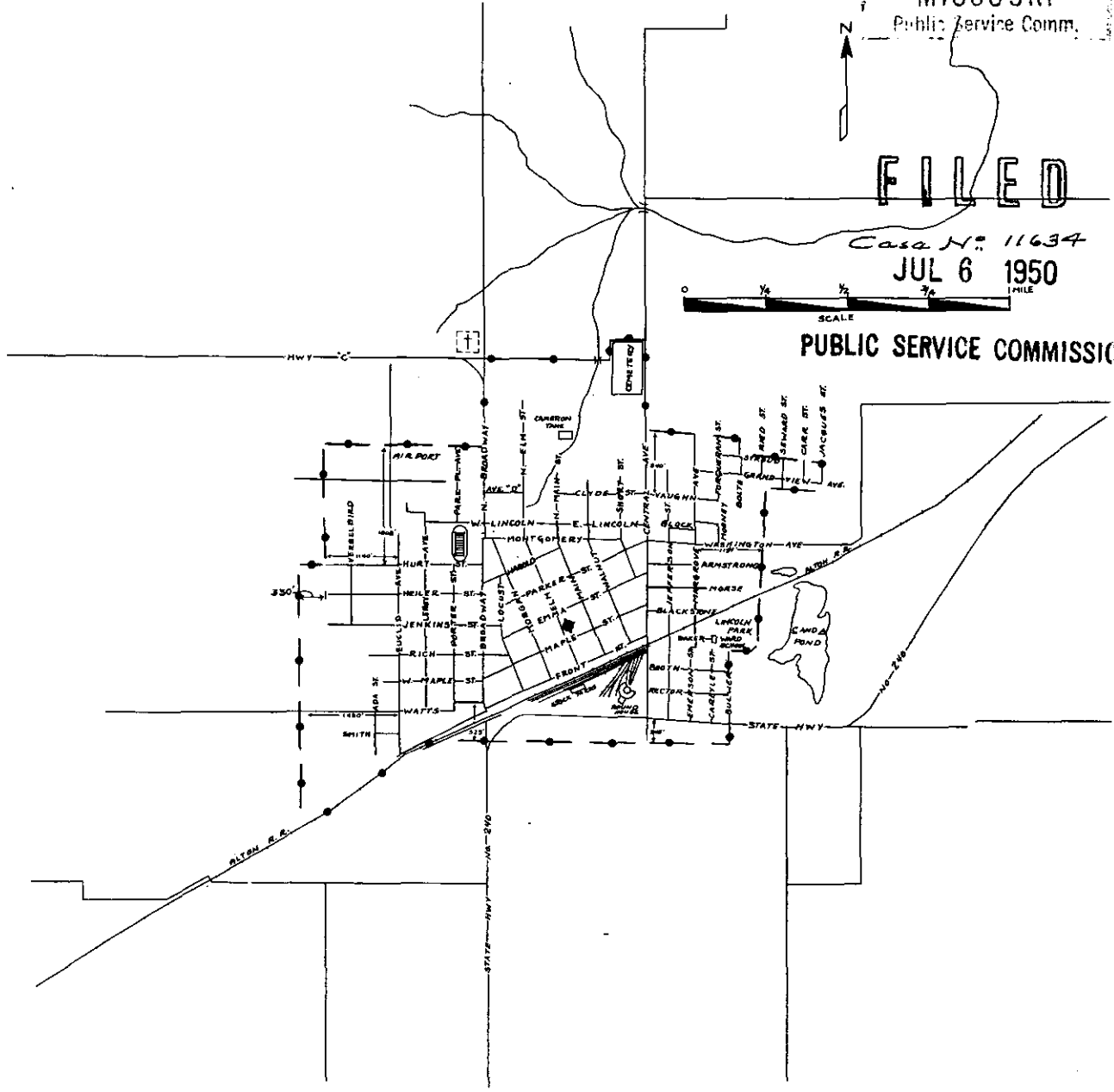
FILED

Case No. 11634
JUL 6 1950



PUBLIC SERVICE COMMISSION

SLATER, MO.



CODE
BELL CENTRAL OFFICE: 
BASE RATE AREA LIMITS: 

Issued: June 27, 1950

By H. R. TOWLES, General Manager
Southwestern Bell Telephone Company
St. Louis, Missouri

Effective: July 6, 1950

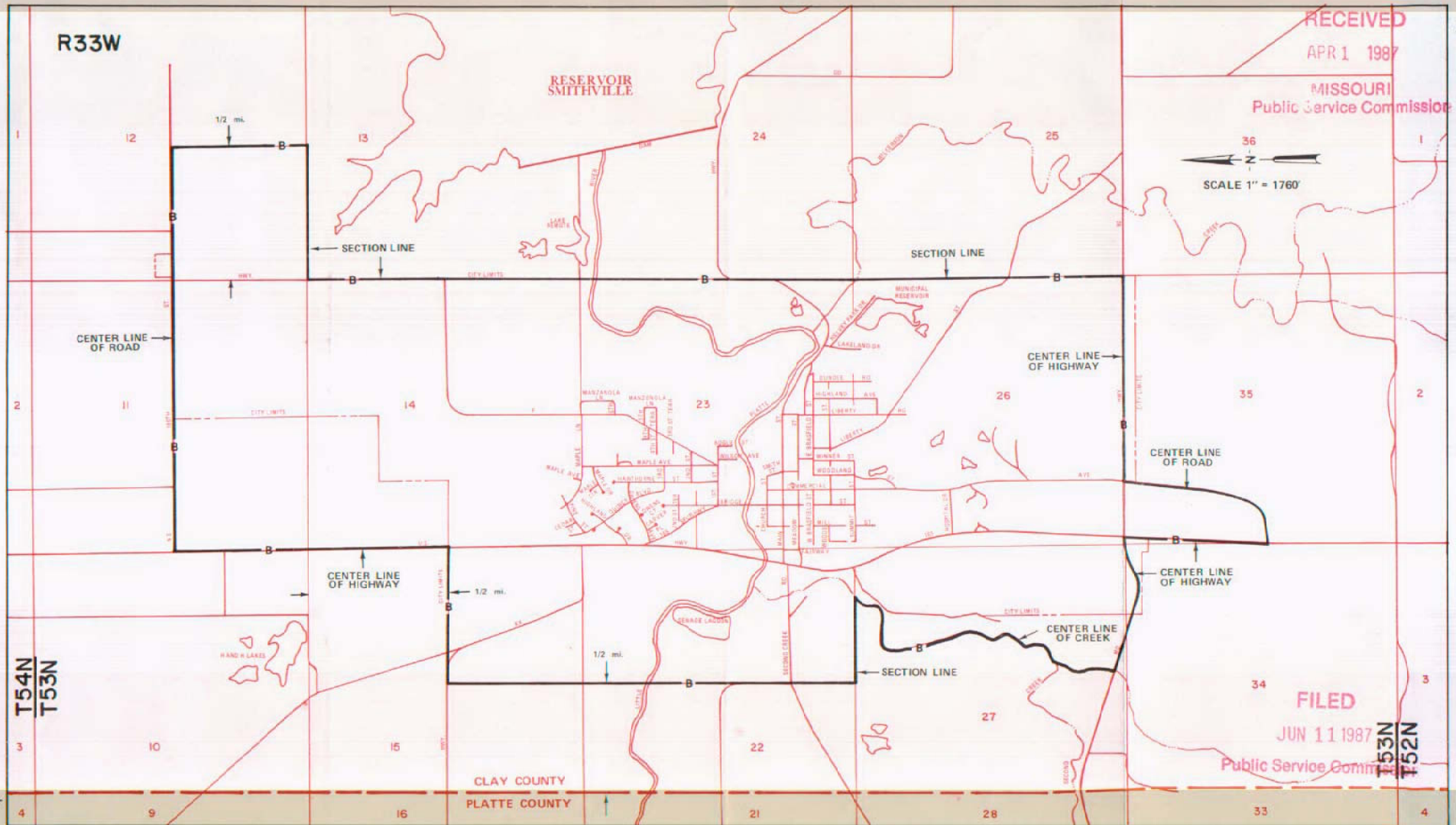
NO SUPPLEMENT TO THIS TARIFF WILL BE ISSUED EXCEPT FOR THE PURPOSE OF CANCELING THIS TARIFF.

P. S. C. Mo. No. 17

SMITHVILLE, MISSOURI

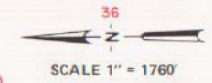
3rd REVISED SHEET 2
REPLACING 2nd REVISED SHEET 2

BASE RATE AREA MAP



RECEIVED
APR 1 1987

MISSOURI
Public Service Commission



FILED

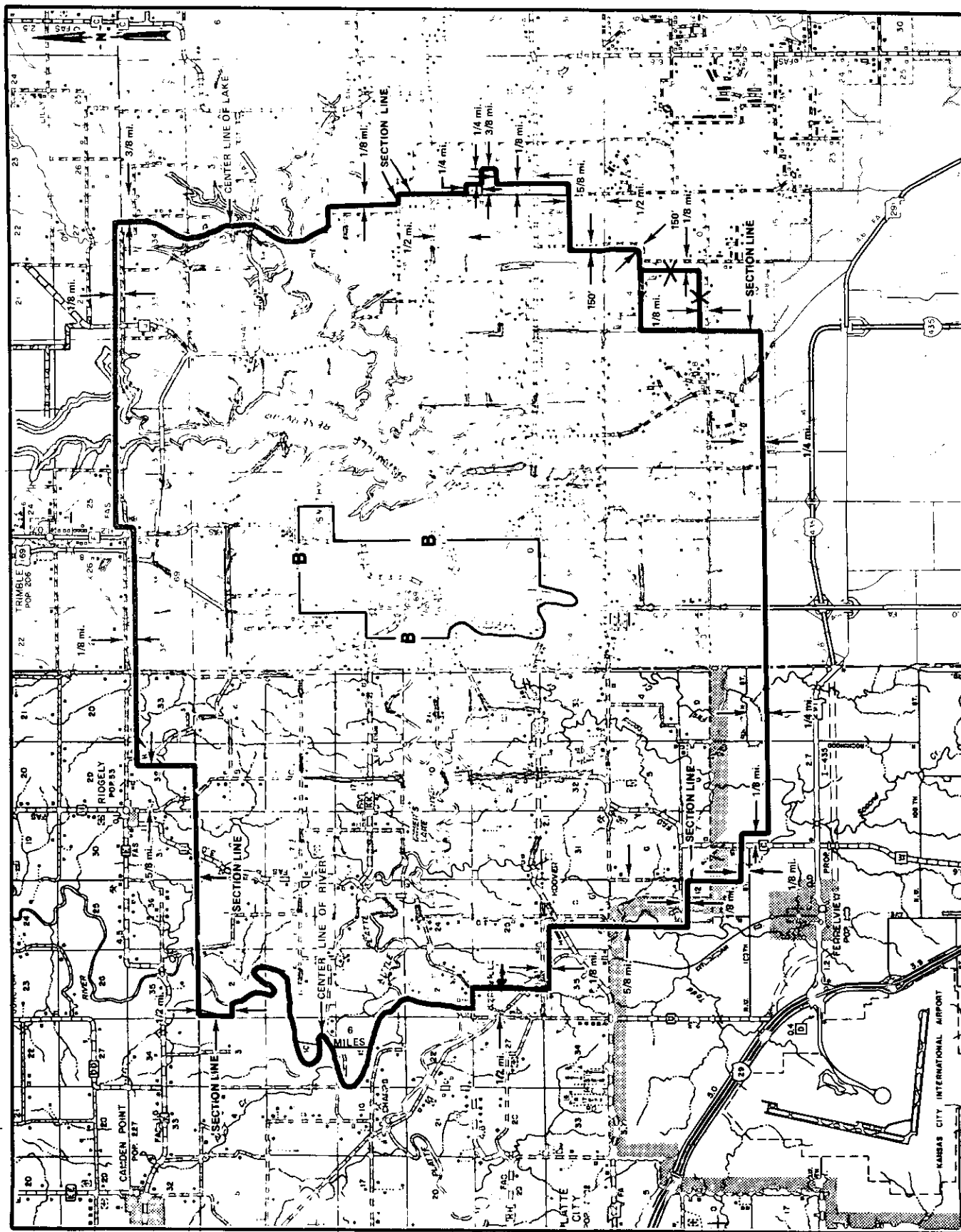
JUN 11 1987

Public Service Commission

T53N
T52N

MAR 31 1987 By R. D. BARRON, President, Missouri Division
Southwestern Bell Telephone Company
St. Louis, Missouri

Effective: JUN 11 1987



R32W | R31W

R33W | R32W

R34W | R33W

T54N
T53N

Issued: July 12, 2007

By CINDY BRINKLEY, President - Missouri
St. Louis, Missouri

FILED
Missouri Public
Service Commission

Effective August 11, 2007

SOUTH NIXA map (exchange area) will be found
following NIXA in Book 2.

SPANISH LAKE

see

St. Louis District Exchange Rates

under

St. Louis

June 1, 1937

No supplement to this tariff will be issued except for the purpose of canceling this tariff

SPRINGFIELD METROPOLITAN EXCHANGE
Original Sheet 1

SOUTHWESTERN BELL TELEPHONE COMPANY
METROPOLITAN EXCHANGE TARIFF

RECEIVED

Superseding All Tariffs Previously Issued

MAY 25 1993

I. Springfield Metropolitan Exchange Service

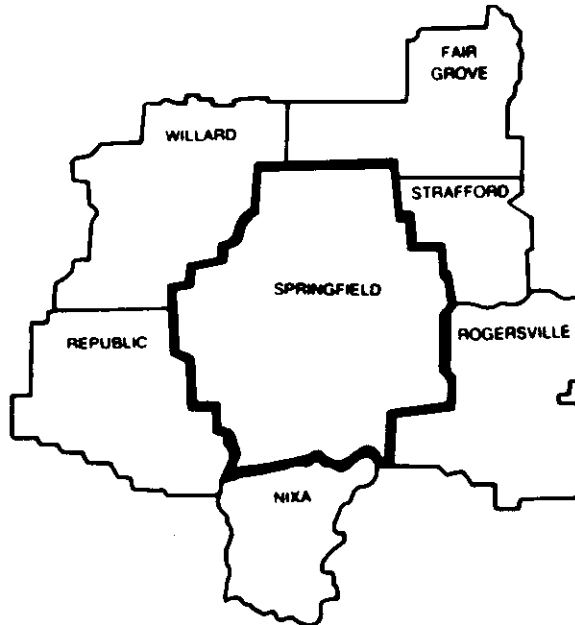
MO. PUBLIC SERVICE COMM.

A. General

In the Springfield Metropolitan Exchange there is a Principal Springfield Zone and a group of Metropolitan Calling Area-1 (MCA-1) Zones. The rates specified for each zone in the Metropolitan exchange entitle the customer to local service within the primary service area specified for that zone.

B. Zones included in the Metropolitan Exchange

The following schematic diagram shows the zones included in the Springfield Metropolitan exchange.



FILED

JUL 07 1993
92-306

MO. PUBLIC SERVICE COMM.

Issued: **MAY 25 1993**

Effective: **JUL 07 1993**

By A. D. ROBERTSON, Assistant Vice President-External Affairs
Southwestern Bell Telephone Company
St. Louis, Missouri

NO SUPPLEMENT TO THIS TARIFF WILL BE ISSUED EXCEPT FOR THE PURPOSE OF CANCELING THIS TARIFF.

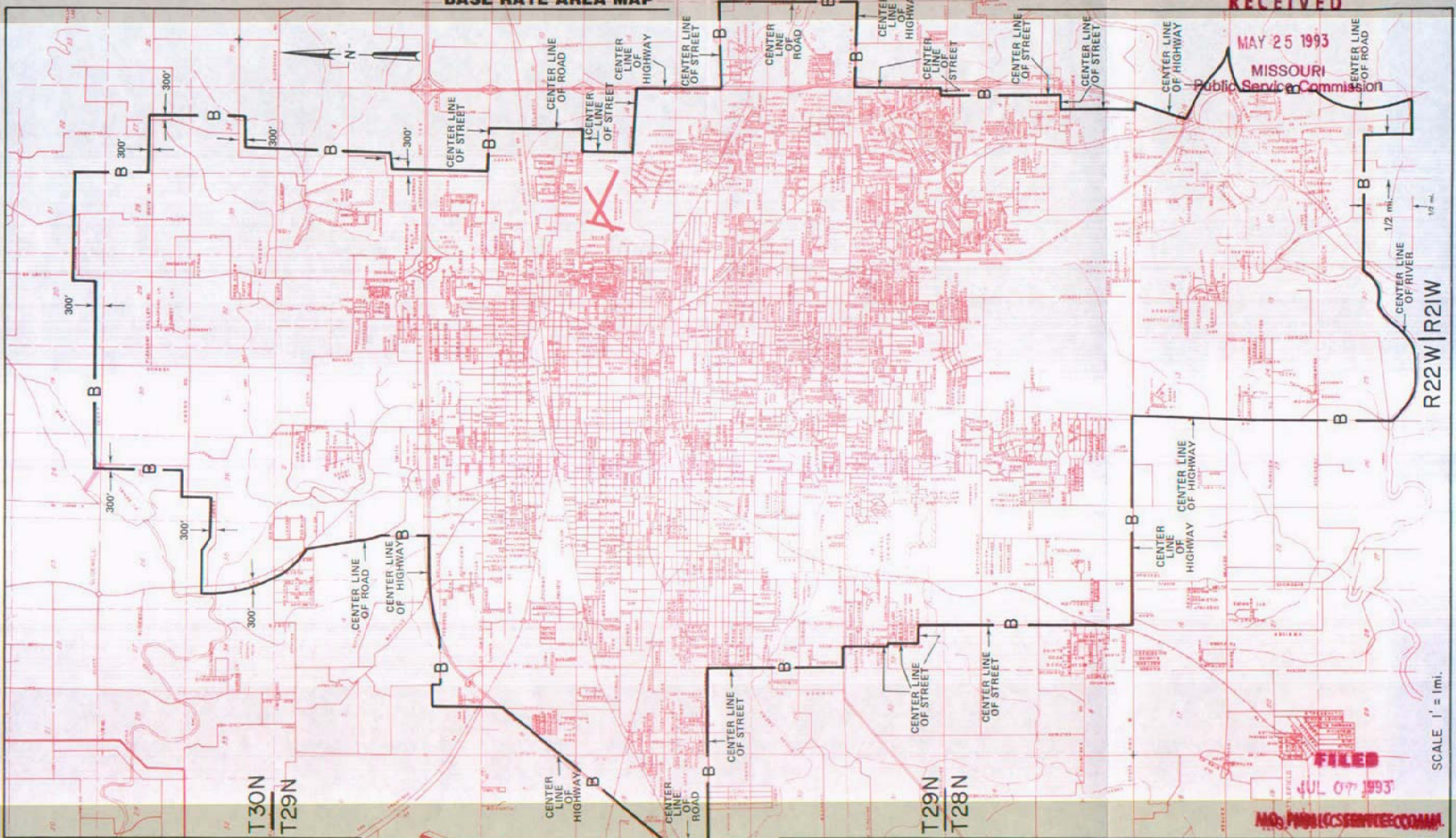
SPRINGFIELD METROPOLITAN EXCHANGE
Springfield Zone
ORIGINAL SHEET 6-A

P. S. C. Mo. No. 17
BASE RATE AREA MAP

RECEIVED

MAY 25 1993

MISSOURI
Public Service Commission



Issued: MAY 25, 1993

By A. D. ROBERTSON, Assistant Vice President - External Affairs
Southwestern Bell Telephone Company
St. Louis, Missouri

Effective: JULY 7, 1993

RECEIVED

NO SUPPLEMENT TO THIS TARIFF WILL BE ISSUED EXCEPT FOR THE PURPOSE OF CANCELING THIS TARIFF NOV 02 2000

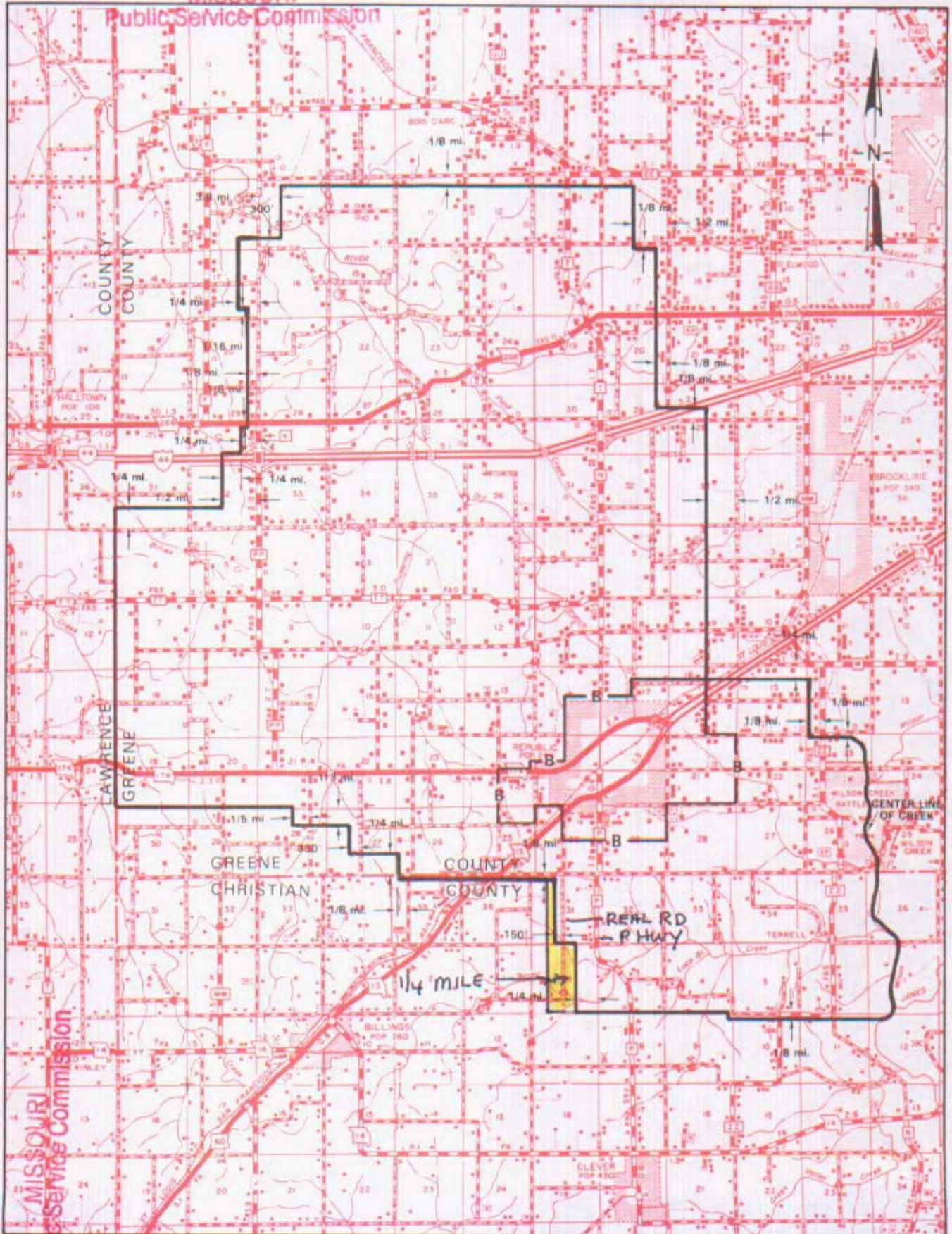
SPRINGFIELD METROPOLITAN EXCHANGE

P. S. C. Mo. No. 17
ZONE AREA MAP

Republic Zone
1st Revised Sheet 4-B
Replacing ORIGINAL SHEET 4-B

MISSOURI

Public Service Commission



T29N
T28N

T28W
T27W

FIED

DEC 04 2000

MISSOURI
Public Service Commission

R25W | R24W

JAN NEWTON - President R24W | R23W

R23W | R22W

November 3, 2000

By A. D. ROBERTSON, Assistant Vice President - External Affairs
Southwestern Bell Telephone Company
St. Louis, Missouri

December 4, 2000

Issued: MAY 25, 1993

Revised: MAY 25, 1993

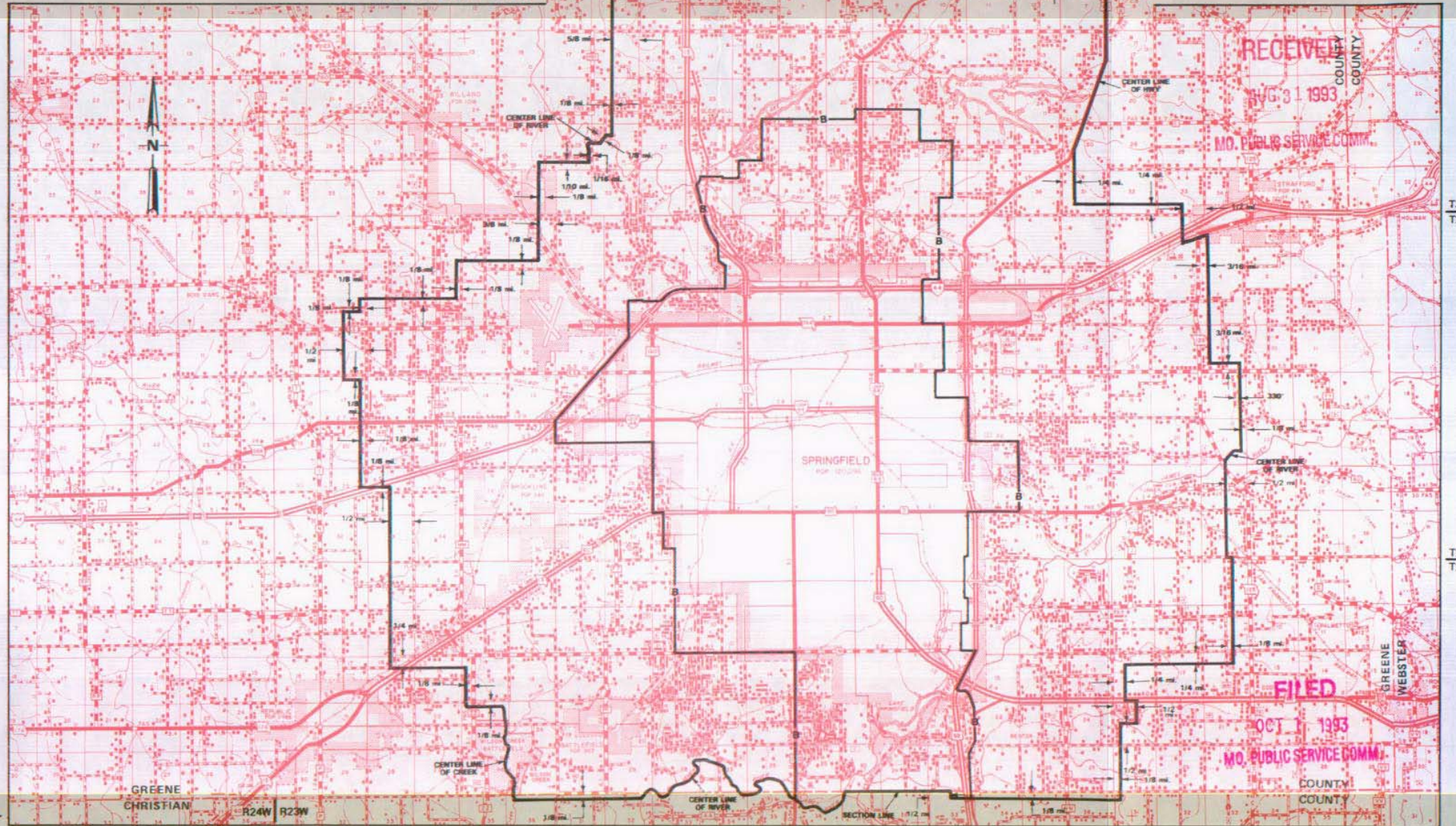
NO SUPPLEMENT TO THIS TARIFF WILL BE ISSUED EXCEPT FOR THE PURPOSE OF CANCELING THIS TARIFF.

P. S. C. Mo. No. 17 ZONE AREA MAP

SPRINGFIELD METROPOLITAN EXCHANGE

Springfield Zone

1st REVISED SHEET 6-B
REPLACING ORIGINAL SHEET 6-B



By D. R. KAESHOFER, Division Manager-Regulatory & Industry Relations
Southwestern Bell Telephone Company
St. Louis, Missouri

Issued: SEPTEMBER 1, 1993

Effective: OCTOBER 1, 1993

SBC PSC MO #17
Stanberry, Missouri
Corrected Original Sheet 2
Replacing Original Sheet 2

Non-Scannable Map

(Is viewable in the Data Center
200 Madison Street, 1st Floor
Jefferson City MO)

October 24, 1960

C
Mr. F. B. Hunt,
Vice President & General Manager,
Southwestern Bell Telephone Company
1010 Pine Street,
St. Louis, Missouri

O
Mr. C. W. Chastain, General Manager,
Grand River Mutual Telephone Corporation,
Princeton, Missouri

Gentlemen:

P
This is to advise that the Commission is agreeable to the proposal of Southwestern Bell Telephone Company to provide service to the following parties on an "Exception" basis:

- Y
1. Mr. Lester Miller has Alanthus service and is located in the Stanberry exchange area. Mrs. Miller stated they plan to discontinue the Alanthus service and order Stanberry service.
 2. Mr. Robert Miller also has Alanthus service and is located in the Stanberry exchange area. The Millers indicated they wished to retain the Alanthus service as long as possible since they have relatives in Alanthus. However, they will take Stanberry service when the present service is discontinued.
 3. Mr. Harvey Peterson has Stanberry service and is located in the Alanthus exchange area. Service was installed prior to 1960 but the exact date is not known. Mr. Peterson says he does not want Grand River service and if Stanberry service is discontinued he will do without a telephone.
 4. Mrs. M. T. Jansen, Sr., located in the Alanthus exchange area has had Stanberry service for about 30 years. Mr. Jansen says he will not accept Grand River service and wishes to retain the Stanberry service.
 5. Stanberry service was installed in the home of Mr. M. T. Jansen, Jr., on January 31, 1949. The Jensens advised that all their business is transacted in Stanberry and they have relatives in Stanberry. They definitely wish to retain the Stanberry service.

6. Stanberry telephone service was installed for Mr. Eugene Stall on January 28, 1957. The former owner of the farm had Stanberry service and the telephone was reconnected for Mr. Stall by mistake when it was not realized this farm is outside the Stanberry exchange boundary. Upon detecting this mistake, our business office records were noted so that in case Mr. Stall's telephone is disconnected Stanberry service will not be installed for the new owner of the farm. Mrs. Stall says they will not subscribe to other than Stanberry service and wish to retain their present service.

7. No second telephone service exists for Mr. Stall. There may previously have been a second Stanberry telephone in a now vacant house. However, none is there at present.

The above arrangements will be subject to the following provisions:

1. Any change of ownership or occupancy will cause discontinuance of Bell service to these locations.
2. Any change in directory listing or billing information shall be deemed evidence of change specified in "1". Names as shown in Mr. Hunt's letter are presumed to be those now being used for these purposes.
3. No establishments/^{not}now having telephone service from the Bell company will be provided Bell service.
4. Mr. Hunt's letter points out that Mr. Eugene Stall has only one service and that he has a second house which is vacant. It should be specifically understood that no Bell service is to be established at that vacant house.

It is to be understood that the Commission will permit this arrangement and that it will be notified when the present customers discontinue service and when present facilities providing said service have been removed, and no other subscriber or subscribers will be permitted to receive service under the present arrangement.

Very truly yours,

Patricia Nacy
Secretary

C
O
P
Y

NO SUPPLEMENT TO THIS TARIFF WILL BE ISSUED EXCEPT FOR THE PURPOSE OF CANCELING THIS TARIFF.

P. S. C. Mo. No. 17

EXCHANGE AREA MAP

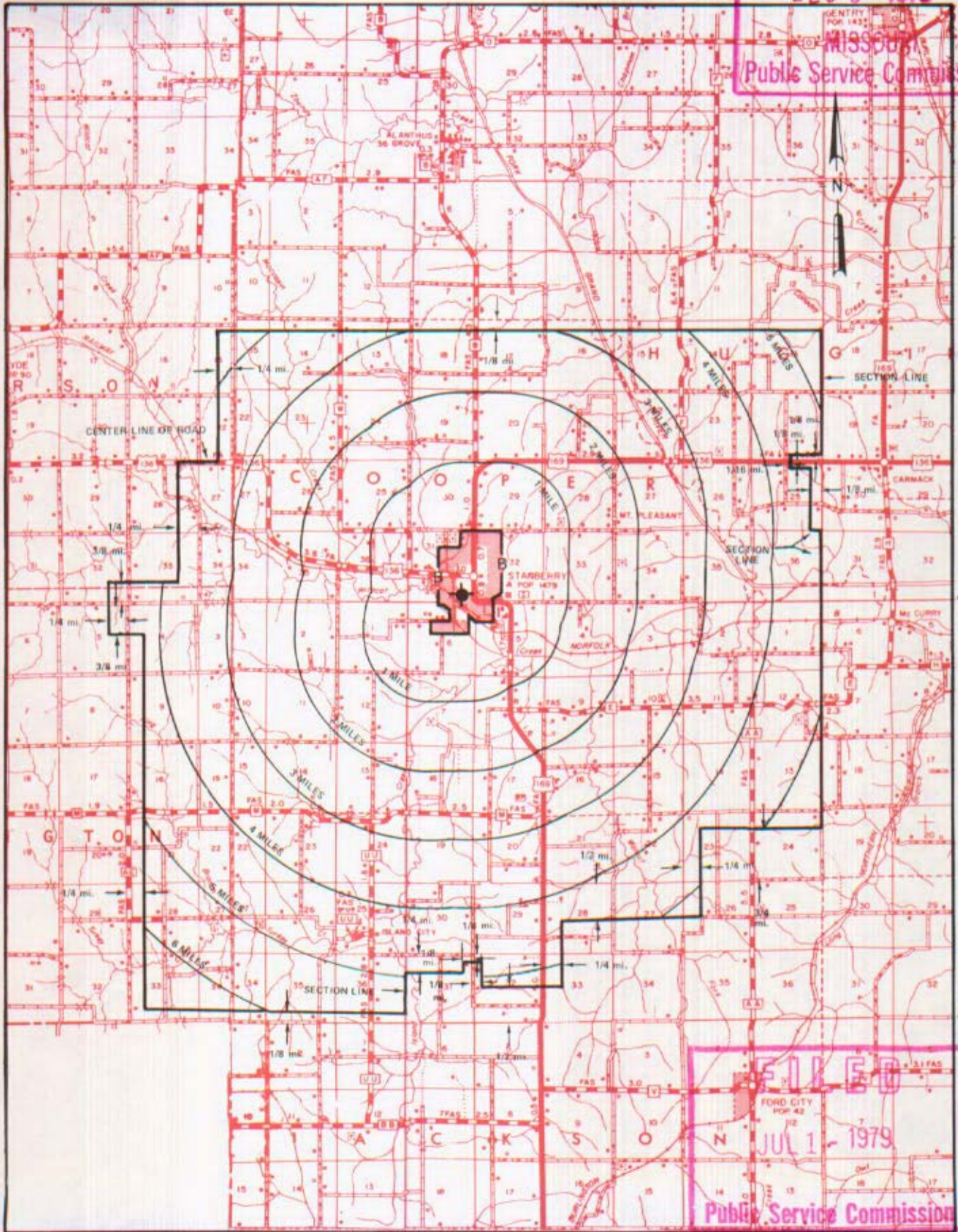
REPLACING 5th REVISED SHEET 3

Stanberry, Missouri

RECEIVED
5th REVISED SHEET 3

DEC 5 1978

Public Service Commission



T64N
T63N

T63N
T62N

T62N
T61N

FILED

JUL 1 - 1979

Public Service Commission

R33W | R32W

R32W | R31W

By R. R. SHOCKLEY, Vice President, Missouri
Southwestern Bell Telephone Company

St. Louis, Missouri

Issued: December 15, 1978

Effective: JUL 1 - 1979

No supplement to this
tariff will be issued
except for the purpose
of canceling this tariff

STRAFFORD, MISSOURI
5th Revised Sheet 2
Replacing 4th Revised Sheet 2

BASE RATE AREA MAP

THIS AREA IS INCLUDED IN THE SPRINGFIELD METROPOLITAN EXCHANGE.

RECEIVED

MAY 25 1993

MO. PUBLIC SERVICE COMM.

FILED

JUL 07 1993

MO. PUBLIC SERVICE COMM.

Issued: **MAY 25 1993**

Effective: **JUL 07 1993**

By A. D. ROBERTSON, Assistant Vice President-External Affairs
Southwestern Bell Telephone Company
St. Louis, Missouri

No supplement to this
tariff will be issued
except for the purpose
of canceling this tariff

STRAFFORD, MISSOURI
10th Revised Sheet 3
Replacing 9th Revised Sheet 3

EXCHANGE AREA MAP

THIS AREA IS INCLUDED IN THE SPRINGFIELD METROPOLITAN EXCHANGE.

RECEIVED

MAY 25 1993

MO. PUBLIC SERVICE COMM.

FILED

JUL 07 1993
92-306

MO. PUBLIC SERVICE COMM.

Issued: **MAY 25 1993**

Effective: **JUL 07 1993**

By A. D. ROBERTSON, Assistant Vice President-External Affairs
Southwestern Bell Telephone Company
St. Louis, Missouri

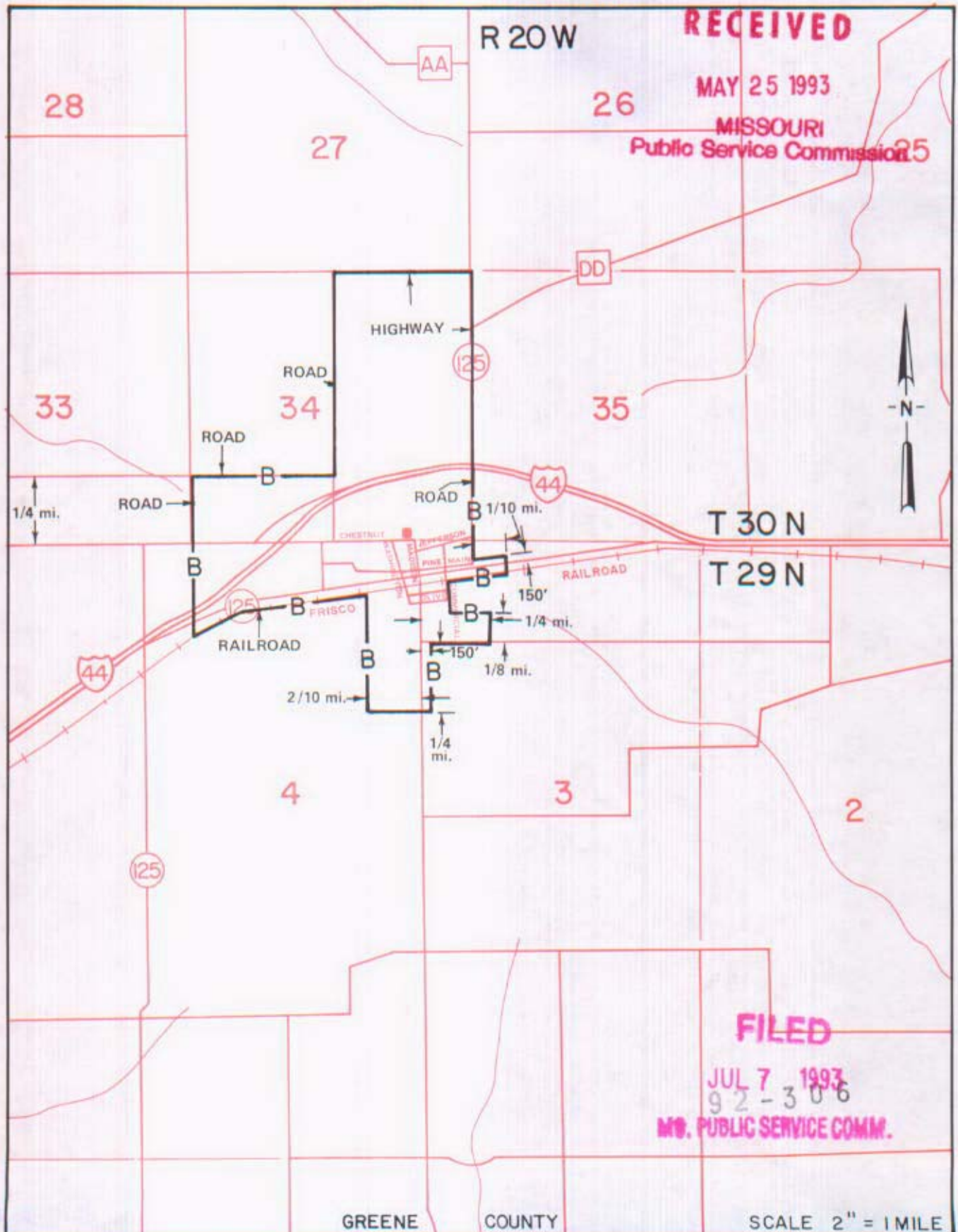
NO SUPPLEMENT TO THIS TARIFF WILL BE ISSUED EXCEPT FOR THE PURPOSE OF CANCELING THIS TARIFF.

SPRINGFIELD METROPOLITAN EXCHANGE

Strafford Zone

ORIGINAL SHEET 7-A

P. S. C. Mo. No. 17
BASE RATE AREA MAP



By A. D. ROBERTSON, Assistant Vice President - External Affairs
Southwestern Bell Telephone Company
St. Louis, Missouri

Issued: MAY 25, 1993

Effective: JULY 7, 1993

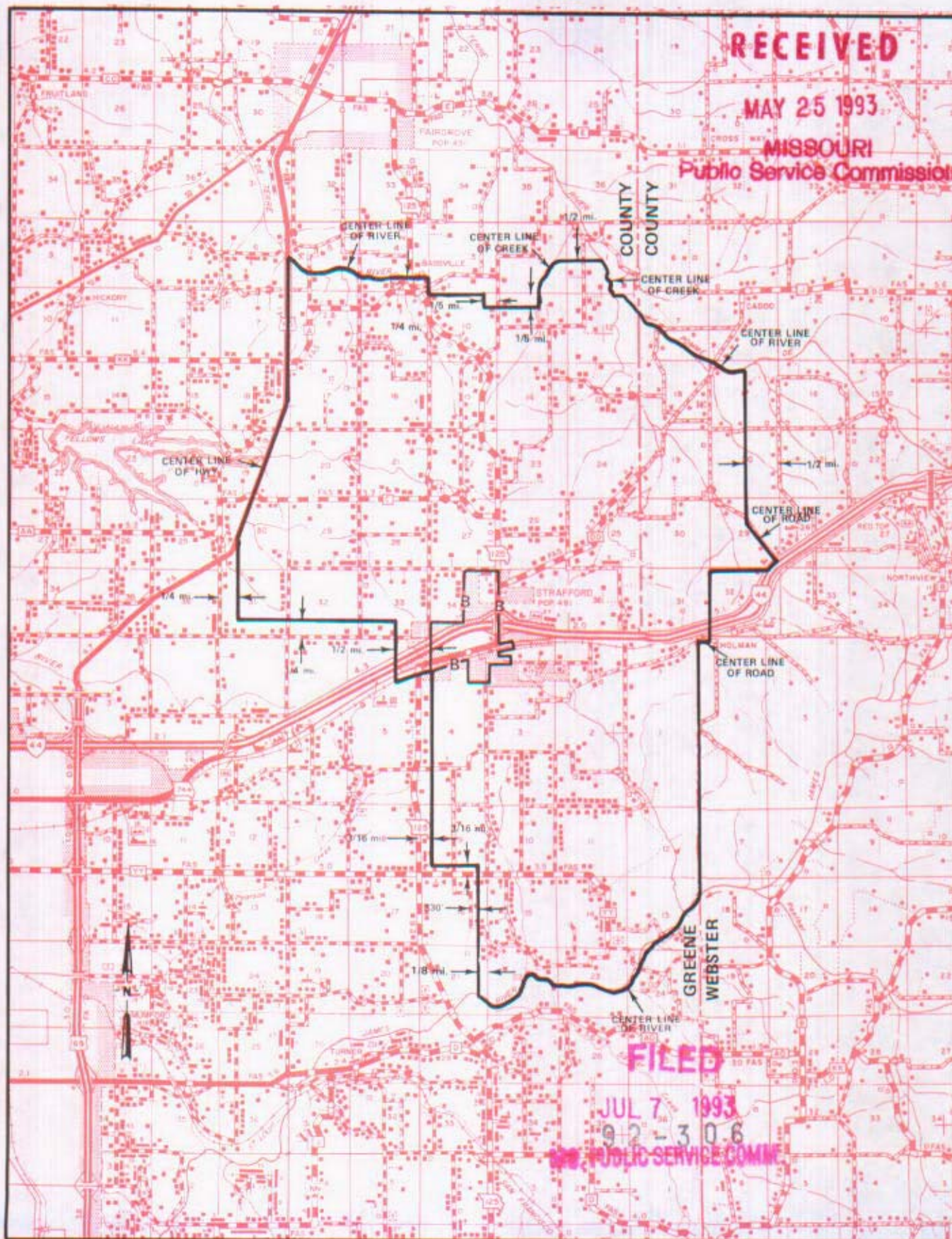
NO SUPPLEMENT TO THIS TARIFF WILL BE ISSUED EXCEPT FOR THE PURPOSE OF CANCELING THIS TARIFF.

SPRINGFIELD METROPOLITAN EXCHANGE

Strafford Zone

ORIGINAL SHEET 7-B

P. S. C. Mo. No. 17 ZONE AREA MAP



T31N
T30N

T30N
T29N

T29N
T28N

R21W | R20W

R20W | R19W

By A. D. ROBERTSON, Assistant Vice President - External Affairs
Southwestern Bell Telephone Company
St. Louis, Missouri

Issued: MAY 25, 1993

Effective: JULY 7, 1993