

SOUTHWESTERN BELL TELEPHONE COMPANY
LOCAL EXCHANGE TARIFF
SUPERSEDING ALL TARIFFS PREVIOUSLY ISSUED

This exchange was sold to Mr. A. J. Roberts on January 16, 1939; therefore, all rates, rules, and regulations formerly authorized for this exchange are hereby withdrawn.

Accepted, Kansas City, Mo.

RECEIVED

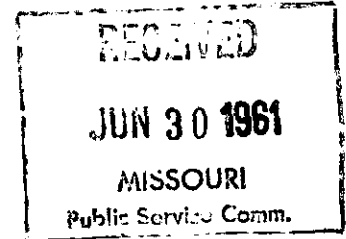
MAR 23 1939

ROBERT E. HOLLIWAY, Sec'y.
PUBLIC SERVICE COM.

FILED
MAR 24 1939
By *ak*
PUBLIC SERVICE COM.
OF MO.

SOUTHWESTERN BELL TELEPHONE COMPANY
LOCAL EXCHANGE TARIFF

This exchange was sold to the South Missouri Telephone Company, effective August 1, 1961, and, therefore, all rates contained in Sheet 1-E of the Local Exchange Tariff and rate practices formerly authorized for this exchange are withdrawn.



FILED

AUG 1 - 1961

PUBLIC SERVICE COMMISSION

Issued under Order of the Public Service Commission Case No. 14208

Issued: July 1, 1961

Effective: August 1, 1961

By F. B. HUNT, Vice President and General Manager
St. Louis, Missouri

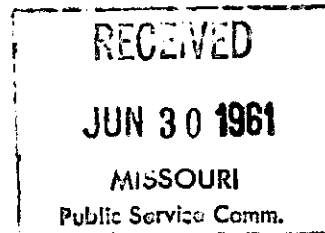
NO SUPPLEMENT TO THIS TARIFF WILL
BE ISSUED EXCEPT FOR THE PURPOSE
OF CANCELING THIS TARIFF.

P. S. C. Mo.-No. 17

THAYER, MISSOURI
1ST REVISED SHEET 3
CANCELING ORIGINAL SHEET 3

SOUTHWESTERN BELL TELEPHONE COMPANY
LOCAL EXCHANGE TARIFF

This exchange was sold to the South Missouri Telephone Company, effective August 1, 1961, and, therefore, all rates contained in Sheet 1-E of the Local Exchange Tariff and rate practices formerly authorized for this exchange are withdrawn.



FILED

AUG 1 - 1961

PUBLIC SERVICE COMMISSION

Issued under Order of the Public Service Commission Case No. 14208

Issued: July 1, 1961

Effective: August 1, 1961

By F. B. HUNT, Vice President and General Manager
St. Louis, Missouri

SBC PSC MO #17
Trenton, Missouri
1st Revised Sheet 2
Replacing Original Sheet 2

Non-Scannable Map

(Is viewable in the Data Center
200 Madison Street, 1st Floor
Jefferson City MO)

NO SUPPLEMENT TO THIS TARIFF WILL BE ISSUED EXCEPT FOR THE PURPOSE OF CANCELING THIS TARIFF.

P. S. C. Mo. No. 17

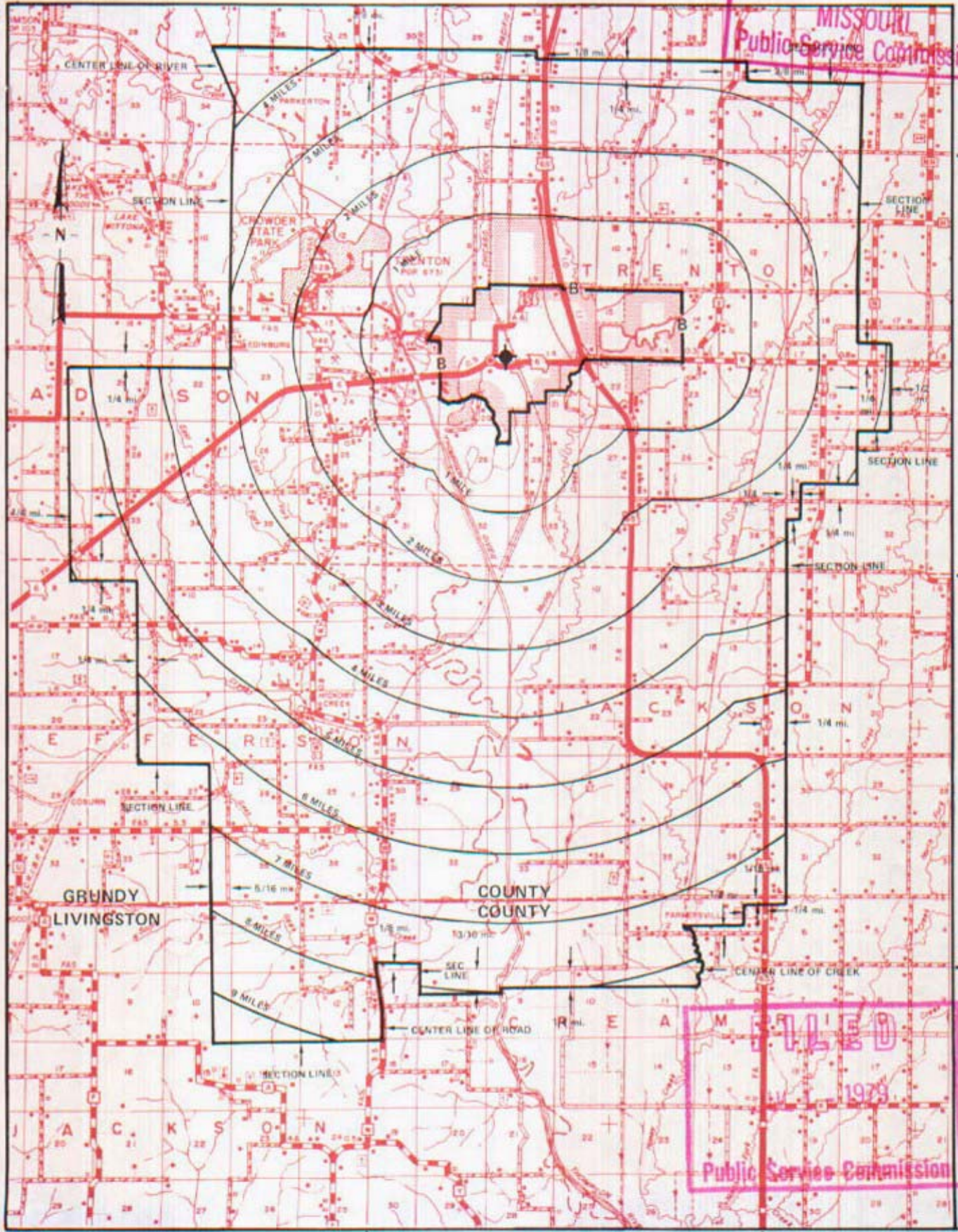
EXCHANGE AREA MAP

REPLACING 6th REVISED SHEET 3

7th REVISED SHEET 3

DEC 5 1978

MISSOURI
Public Service Commission



T62N
T61N

T61N
T60N

T60N
T59N

R25W | R24W

R24W | R23W

By R. R. SHOCKLEY, Vice President, Missouri
Southwestern Bell Telephone Company
St. Louis, Missouri

FILED
DEC 5 1978
Public Service Commission

Issued: December 15, 1978

Effective: JUL 1 - 1979

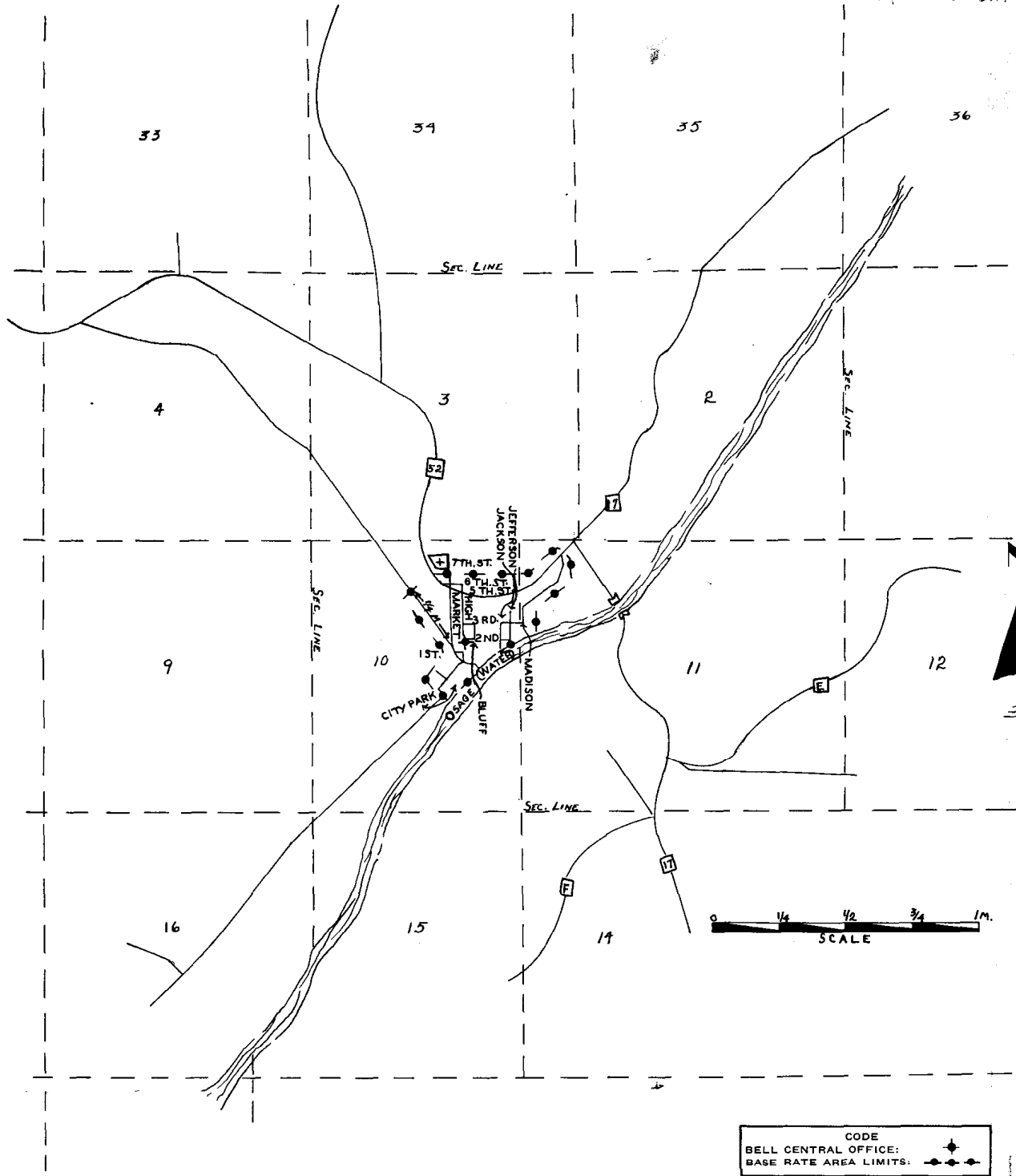
NO SUPPLEMENT TO THIS TARIFF WILL BE ISSUED EXCEPT FOR THE PURPOSE OF CANCELING THIS TARIFF.

P. S. C. Mo. No. 17

Tuscumbia, Missouri
ORIGINAL SHEET 2
REPLACING OZARK CENTRAL TELEPHONE COMPANY
P. S. C. Mo. No. 1
ORIGINAL SHEET 2

BASE RATE AREA MAP

TUSCUMBIA, MO.



Issued: September 8, 1955

Effective: October 8, 1955

By J. R. PETERSON, General Manager
Southwestern Bell Telephone Company
St. Louis, Missouri

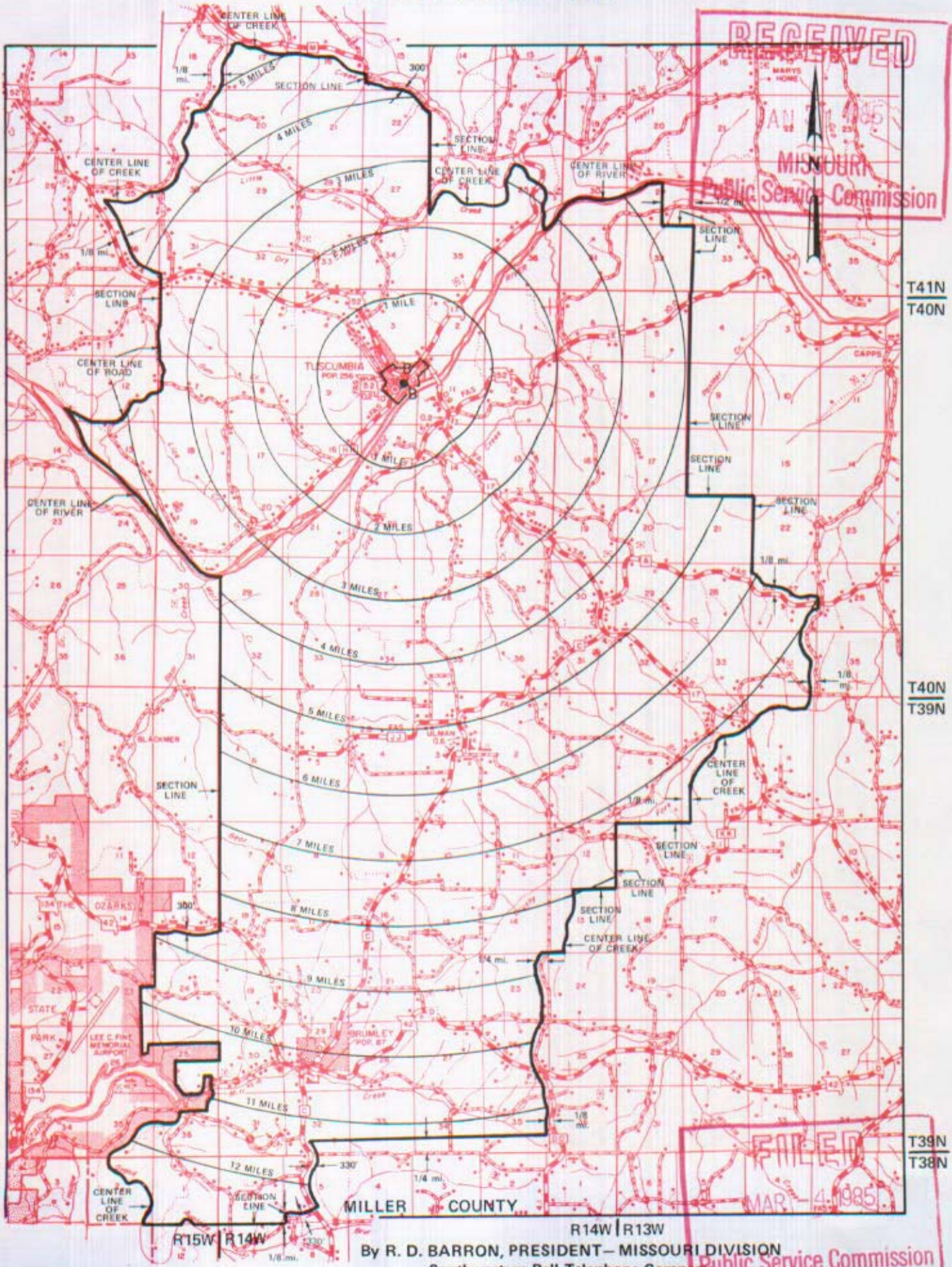
NO SUPPLEMENT TO THIS TARIFF WILL BE ISSUED EXCEPT FOR THE PURPOSE OF CANCELING THIS TARIFF.

P. S. C. Mo. No. 17

Tuscumbia, Missouri

13th REVISED SHEET 3
REPLACING 12th REVISED SHEET 3

EXCHANGE AREA MAP



By R. D. BARRON, PRESIDENT - MISSOURI DIVISION
Southwestern Bell Telephone Company
St. Louis, Missouri

Public Service Commission
Effective: MARCH 4, 1985

Issued: JANUARY 31, 1985