

NO SUPPLEMENT TO THIS TARIFF WILL BE ISSUED EXCEPT FOR THE PURPOSE OF CANCELING THIS TARIFF.

P. S. C. Mo. No. 17 BASE RATE AREA MAP

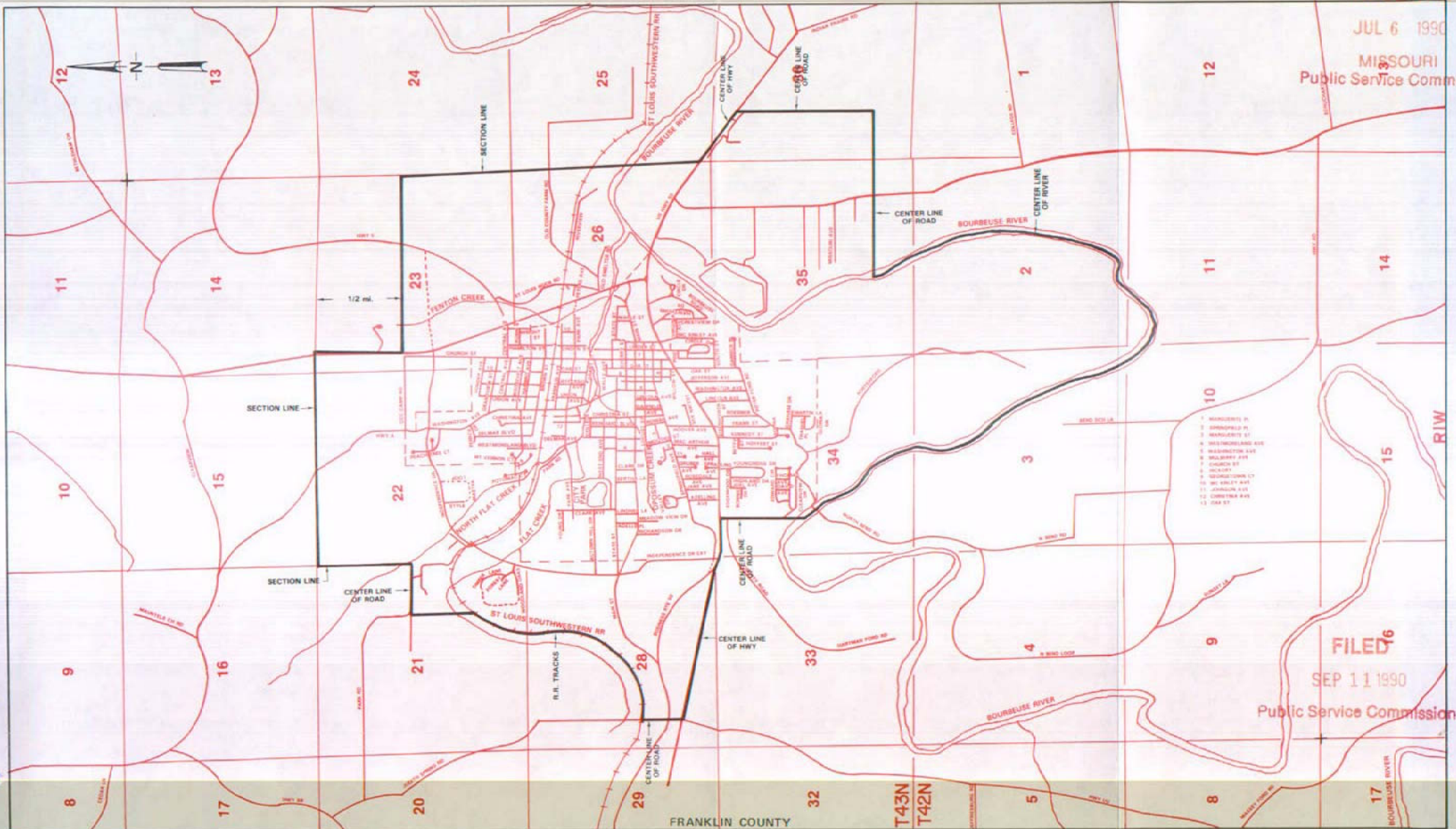
Union, Missouri

4th REVISED SHEET 2
REPLACING 3rd REVISED SHEET 2

RECEIVED

JUL 6 1990

MISSOURI
Public Service Commission



- 1. MARSHFIELD ST.
- 2. MARSHFIELD ST.
- 3. MARSHFIELD ST.
- 4. MARSHFIELD ST.
- 5. MARSHFIELD ST.
- 6. MARSHFIELD ST.
- 7. MARSHFIELD ST.
- 8. MARSHFIELD ST.
- 9. MARSHFIELD ST.
- 10. MARSHFIELD ST.
- 11. MARSHFIELD ST.
- 12. MARSHFIELD ST.
- 13. MARSHFIELD ST.
- 14. MARSHFIELD ST.
- 15. MARSHFIELD ST.
- 16. MARSHFIELD ST.
- 17. MARSHFIELD ST.
- 18. MARSHFIELD ST.
- 19. MARSHFIELD ST.
- 20. MARSHFIELD ST.
- 21. MARSHFIELD ST.
- 22. MARSHFIELD ST.
- 23. MARSHFIELD ST.
- 24. MARSHFIELD ST.
- 25. MARSHFIELD ST.
- 26. MARSHFIELD ST.
- 27. MARSHFIELD ST.
- 28. MARSHFIELD ST.
- 29. MARSHFIELD ST.
- 30. MARSHFIELD ST.
- 31. MARSHFIELD ST.
- 32. MARSHFIELD ST.
- 33. MARSHFIELD ST.
- 34. MARSHFIELD ST.
- 35. MARSHFIELD ST.
- 36. MARSHFIELD ST.

FILED 6

SEP 11 1990

Public Service Commission

JUL 16 1990

By R. D. BARRON, PRESIDENT, MISSOURI DIVISION
Southwestern Bell Telephone Company
St. Louis, Missouri

Effective: SEP 11 1990

Issued: _____

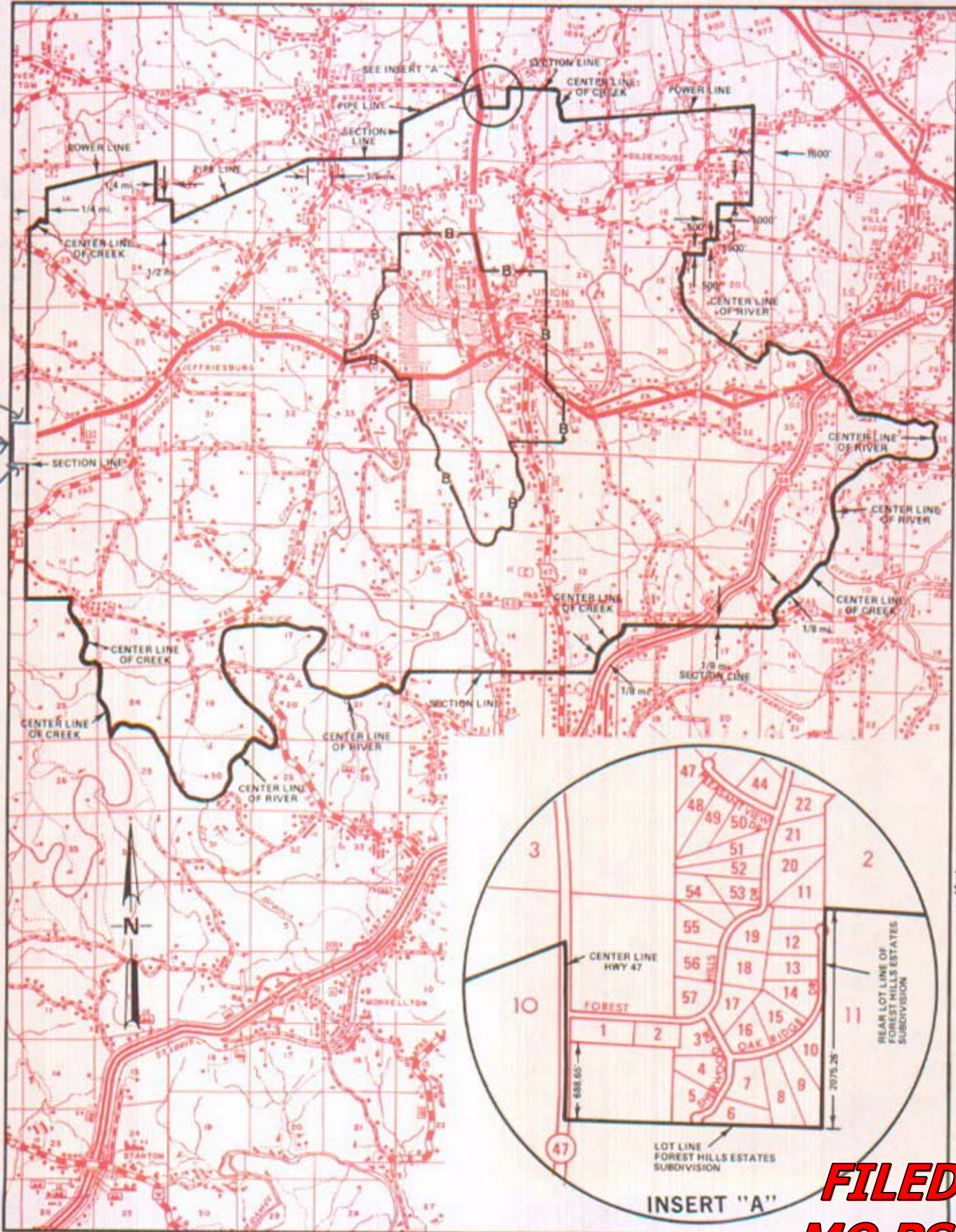
NO SUPPLEMENT TO THIS TARIFF WILL BE ISSUED EXCEPT FOR THE PURPOSE OF CANCELING THIS TARIFF.

P. S. C. Mo. No. 17

Union, Missouri

REPLACING 8th Revised Sheet 3
7th Revised Sheet 3

EXCHANGE AREA MAP



1,500' North
1,300' West
1,500' South

T44N
T43N

T43N
T42N

T42N
T41N

R2W | R1W

R1W | R2W

**FILED
MO PSC**

UNIONTOWN - SEE OLD APPLETON