

**P.S.C. Mo. - No. 17**

Southwestern Bell Telephone Company  
d/b/a AT&T Missouri

Missouri Portion-Cross-Boundary Exchange  
Adoption Notice  
3rd Revised Sheet 1  
Replacing 2nd Revised Sheet 1

**ADOPTION NOTICE**

---

Southwestern Bell Telephone Company d/b/a AT&T Missouri, hereby adopts, ratifies, and makes its own, (CT)  
in every respect as if the same had been originally filed by it, all schedules, rules, notices, concurrences,  
schedule agreements, divisions, authorities, or other instruments whatsoever filed with the Public Service (CT)  
Commission, State of Missouri, by Southwestern Bell Telephone, L.P. d/b/a/ AT&T Missouri and its (CT)  
predecessors prior to June 29, 2007. By this notice, Southwestern Bell Telephone Company d/b/a AT&T (CT)  
Missouri, also adopts and ratifies all supplements or amendments to any of the above schedules, etc., (CT)  
which Southwestern Bell Telephone, L.P., d/b/a AT&T Missouri and its predecessors have heretofore filed (CT)  
with said Commission.

---

Issued: June 26, 2007

By CINDY BRINKLEY, President – Missouri  
St. Louis, Missouri

Effective: ~~July 26, 2007~~  
**June 29, 2007**

**FILED**  
**Missouri Public**  
**Service Commission**  
**TO-2002-185**

CANCELLED - Missouri Public Service Commission - 05/01/2024 - TN-2024-0278 - JI-2024-0142

No Supplement to this tariff will be issued except for the purpose of canceling this tariff.

Missouri Portion-  
Cross-Boundary Exchange  
Adoption Notice  
2nd Revised Sheet 1  
Replacing 1st Revised Sheet 1

ADOPTION NOTICE

- (CT) Southwestern Bell Telephone, L.P., d/b/a AT&T Missouri, hereby adopts, ratifies, and makes its own, in every respect as if the same had been originally filed by it, all schedules, rules, notices, concurrences, schedule agreements, divisions, authorities, or other instruments whatsoever filed with the Public
- (RT) Service Commission, State of Missouri, by Southwestern Bell Telephone Company prior to December 30, 2001, the beginning of Southwestern Bell Telephone, L.P.'s possession. By this notice,
- (CT) Southwestern Bell Telephone, L.P., d/b/a AT&T Missouri, also adopts and ratifies all supplements or amendments to any of the above schedules, etc., which Southwestern Bell Telephone, L.P., d/b/a
- (AT) Southwestern Bell Telephone Company and d/b/a SBC Missouri, has heretofore filed with said Commission.

---

Issued: November 29, 2005

Effective: December 29, 2005

By CINDY BRINKLEY, President-Missouri  
Southwestern Bell Telephone, L.P., d/b/a AT&T Missouri  
St. Louis, Missouri

P.S.C. Mo.- No. 17

REC'D JAN 17 2003

No Supplement to this  
tariff will be issued  
except for the purpose  
of canceling this tariff.

Missouri Portion-  
Cross-Boundary Exchange  
Adoption Notice  
1st Revised Sheet  
Replacing Original Sheet

ADOPTION NOTICE

(CT)

Southwestern Bell Telephone, L.P., d/b/a SBC Missouri, hereby adopts, ratifies, and makes its own, in every respect as if the same had been originally filed by it, all schedules, rules, notices, concurrences, schedule agreements, divisions, authorities, or other instruments whatsoever filed with the Public Service Commission, State of Missouri, by Southwestern Bell Telephone, L.P., d/b/a Southwestern Bell Telephone Company prior to December 30, 2001, the beginning of Southwestern Bell Telephone, L.P.'s possession. By this notice, Southwestern Bell Telephone, L.P., d/b/a SBC Missouri, also adopts and ratifies all supplements or amendments to any of the above schedules, etc., which Southwestern Bell Telephone, L.P., d/b/a Southwestern Bell Telephone Company, has heretofore filed with said Commission.

(CT)

CANCELLED

DEC 16 2005  
2nd RS 1  
Public Service Commission  
MISSOURI

Issued: January 17, 2003

Effective: February 16, 2003

By CINDY BRINKLEY, President-Missouri  
Southwestern Bell Telephone, L.P., d/b/a SBC Missouri  
St. Louis, Missouri

No Supplement to this tariff will be issued except for the purpose of canceling this tariff.

Missouri Portion of Cross-Boundary Exchanges  
Adoption Notice  
Original Sheet 1

Missouri Public  
Service Commission

ADOPTION NOTICE

REC'D DEC 27 2001

Southwestern Bell Telephone, L.P. hereby adopts, ratifies, and makes its own, in every respect as if the same had been originally filed by it, all schedules, rules, notices, concurrences, schedule agreements, divisions, authorities or other instruments whatsoever filed with the Public Service Commission, State of Missouri, by Southwestern Bell Telephone Company prior to December 30, 2001, the beginning of Southwestern Bell Telephone, L.P.'s possession. By this notice, Southwestern Bell Telephone, L.P. also adopts and ratifies all supplements or amendments to any of the above schedules, etc., which Southwestern Bell Telephone Company has heretofore filed with said Commission.

**CANCELLED**

FEB 16 2003  
by ISTR Adoption  
Public Service Commission  
MISSOURI

Issued: December 27, 2001

Effective: ~~January 9, 2002~~

By: JAN NEWTON, President-Missouri Division  
Southwestern Bell Telephone Company  
St. Louis, Missouri

JAN 09 2002  
Missouri Public

FILED JAN 09 2002  
02 - 185  
Service Commission

P.S.C. Mo. - No. 17  
LOCAL EXCHANGE - MISSOURI PORTION TARIFF

Southwestern Bell Telephone  
Company d/b/a AT&T Missouri

Title Page  
5th Revised Sheet 1  
Replacing 4th Revised Sheet 1

MISSOURI PORTION - CROSS-BOUNDARY EXCHANGE

TITLE SHEET

SOUTHWESTERN BELL TELEPHONE COMPANY d/b/a

AT&T MISSOURI

(RT)

(RT)

(RT)

Southwestern Bell Telephone Company d/b/a AT&T Missouri  
operates as a Competitive Telecommunications Company.

Southwestern Bell Telephone Company d/b/a  
AT&T Missouri hereby adopts this tariff.

Applying to its authorized territories within the State of Missouri.

Issued: April 1, 2014

By JOHN SONDAG, President - Missouri  
St. Louis, Missouri

Effective: May 1, 2014

FILED  
Missouri Public  
Service Commission  
JI-2014-0379

CANCELLED - Missouri Public Service Commission - 05/01/2024 - TN-2024-0278 - JI-2024-0142

P.S.C. Mo. - No. 17  
LOCAL EXCHANGE - MISSOURI PORTION TARIFF

Southwestern Bell Telephone  
Company d/b/a AT&T Missouri

Title Page  
4th Revised Sheet 1  
Replacing 3rd Revised Sheet 1

---

**MISSOURI PORTION - CROSS-BOUNDARY EXCHANGE**

**TITLE SHEET**

SOUTHWESTERN BELL TELEPHONE COMPANY d/b/a  
AT&T MISSOURI

SCHEDULE OF RATES  
FOR  
TELEPHONE SERVICE

Southwestern Bell Telephone Company d/b/a AT&T Missouri (AT)  
operates as a Competitive Telecommunications Company. (AT)

Southwestern Bell Telephone Company d/b/a  
AT&T Missouri hereby adopts this tariff.

Applying to its authorized territories within the State of Missouri.

---

Issued: December 9, 2008

By DAVID NICHOLS, President - Missouri  
St. Louis, Missouri

Effective: January 8, 2009

**CANCELLED**  
May 1, 2014  
Missouri Public  
Service Commission  
JL-2014-0379

**FILED**  
Missouri Public  
Service Commission  
JI-2009-0420

**P.S.C. Mo. - No. 17**

Southwestern Bell Telephone Company  
d/b/a AT&T Missouri

Missouri Portion-Cross-Boundary Exchange  
Title Sheet  
3rd Revised Sheet 1  
Replacing 2nd Revised Sheet 1

---

SOUTHWESTERN BELL TELEPHONE COMPANY d/b/a  
AT&T MISSOURI

(CT)

SCHEDULE OF RATES  
FOR  
TELEPHONE SERVICE

Southwestern Bell Telephone Company d/b/a  
AT&T Missouri hereby adopts this tariff.

(CT)

Applying to its authorized territories within the State of Missouri.

---

Issued: June 26, 2007

By CINDY BRINKLEY, President – Missouri  
St. Louis, Missouri

Effective: ~~July 26, 2007~~

**June 29, 2007**

CANCELLED  
January 8, 2009  
Missouri Public  
Service Commission  
JI-2009-0420

FILED  
Missouri Public  
Service Commission  
TO-2002-185

No Supplement to this tariff will be issued except for the purpose of canceling this tariff.

P.S.C. Mo.- No. 17

Missouri Portion-of Cross-Boundary Exchanges

Title Sheet

2nd Revised Sheet 1

Replacing 1st Revised Sheet 1

SOUTHWESTERN BELL TELEPHONE, L.P. d/b/a

(CT)

AT&T MISSOURI

SCHEDULE OF RATES

FOR

TELEPHONE SERVICE

(CT)

Southwestern Bell Telephone, L.P., d/b/a  
AT&T Missouri hereby adopts this tariff.

Applying to its authorized territories within the State of Missouri.

---

Issued: November 29, 2005

Effective: December 29, 2005

By CINDY BRINKLEY, President-Missouri  
Southwestern Bell Telephone, L.P., d/b/a AT&T Missouri  
St. Louis, Missouri



REGD JAN 17 2003

P.S.C. Mo.- No. 17

Missouri Portion-of Cross-Boundary Exchanges

Title Sheet

1st Revised Sheet 1

Replacing Original Sheet 1

No Supplement to this  
tariff will be issued  
except for the purpose  
of canceling this tariff.

SOUTHWESTERN BELL TELEPHONE, L.P. d/b/a

(CT)

SBC MISSOURI

SCHEDULE OF RATES

FOR

TELEPHONE SERVICE

**CANCELLED**

**DEC 16 2005**

by 2nd RS 1  
**Public Service Commission**  
**MISSOURI**

(CT)

Southwestern Bell Telephone, L.P., d/b/a  
SBC Missouri hereby adopts this tariff.

Applying to its authorized territories within the State of Missouri.

Issued: January 17, 2003

Effective: February 16, 2003

By CINDY BRINKLEY, President-SBC Missouri  
Southwestern Bell Telephone, L.P., d/b/a SBC Missouri  
St. Louis, Missouri

FILED FEB 16 2003

No supplement to this tariff will be issued except for the purpose of canceling this tariff.

Missouri Portion of Cross-Boundary Exchanges  
Title Sheet  
Original Sheet 1

Missouri Public  
Service Commission

REC'D DEC 27 2001

SOUTHWESTERN BELL TELEPHONE, L.P. d/b/a

SOUTHWESTERN BELL TELEPHONE COMPANY

SCHEDULE OF RATES

FOR

TELEPHONE SERVICE

**CANCELLED**

FEB 16 2003

LEATHES  
Public Service Commission  
MISSOURI

Southwestern Bell Telephone, L.P., d/b/a  
Southwestern Bell Telephone Company hereby adopts this tariff.

Missouri Public

FILED JAN 09 2002

02-185  
Service Commission

Applying to its authorized territories within the State of Missouri.

Issued: December 27, 2001

Effective: [REDACTED]

By JAN NEWTON, President-Missouri  
Southwestern Bell Telephone Company  
St. Louis, Missouri

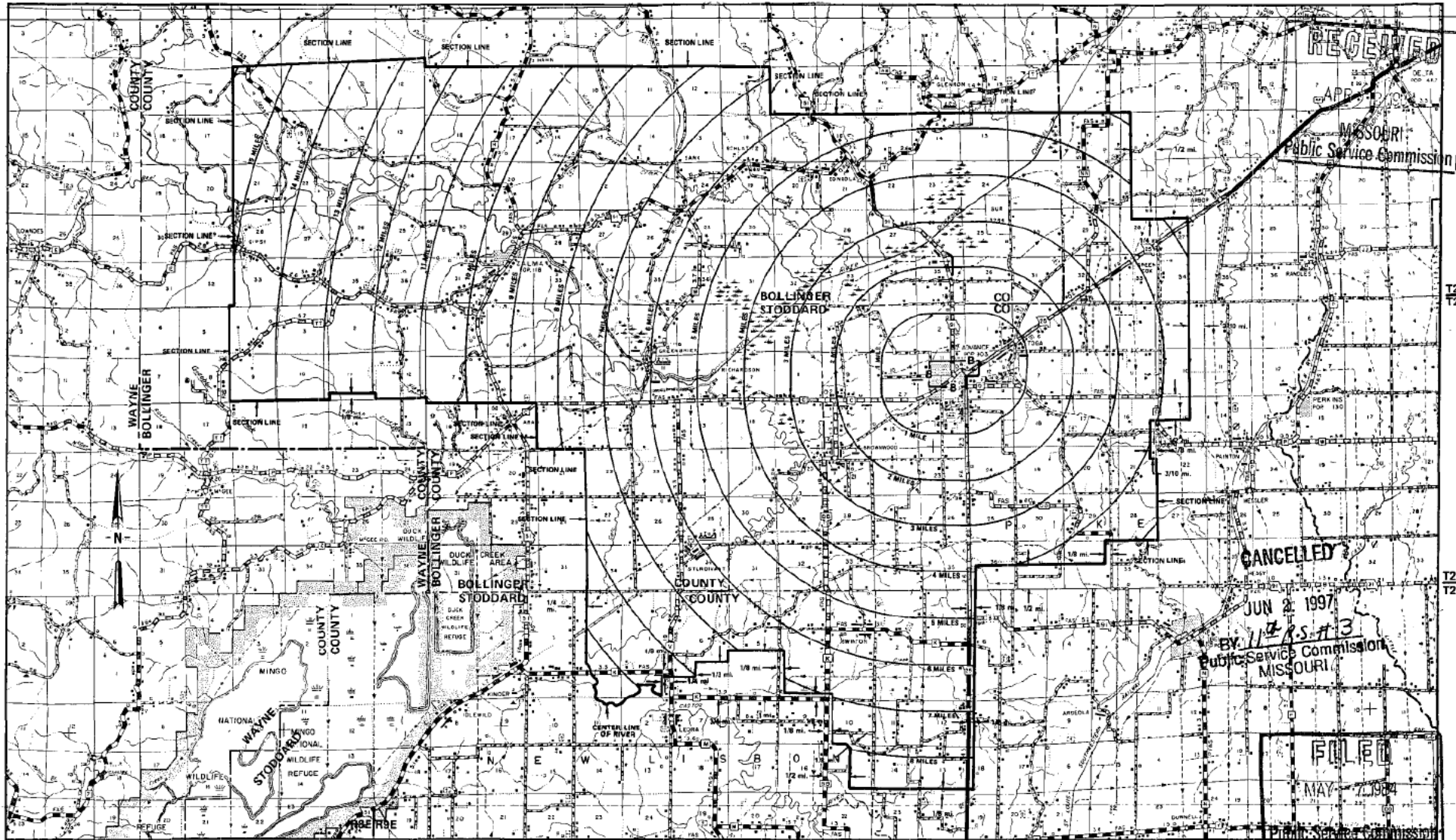
JAN 09 2002

NO SUPPLEMENT TO THIS TARIFF WILL BE ISSUED EXCEPT FOR THE PURPOSE OF CANCELING THIS TARIFF.

P. S. C. Mo. No. 17  
EXCHANGE AREA MAP

Advance, Missouri

10th REVISED SHEET 3  
REPLACING 9th REVISED SHEET 2



R7E|R8E

By R. D. BARRON, President, Missouri  
Southwestern Bell Telephone Company  
St. Louis, Missouri

R9E|R10E

R10E|R11E

R11E|R12E

Issued: APRIL 6, 1984

Effective: MAY 7, 1984

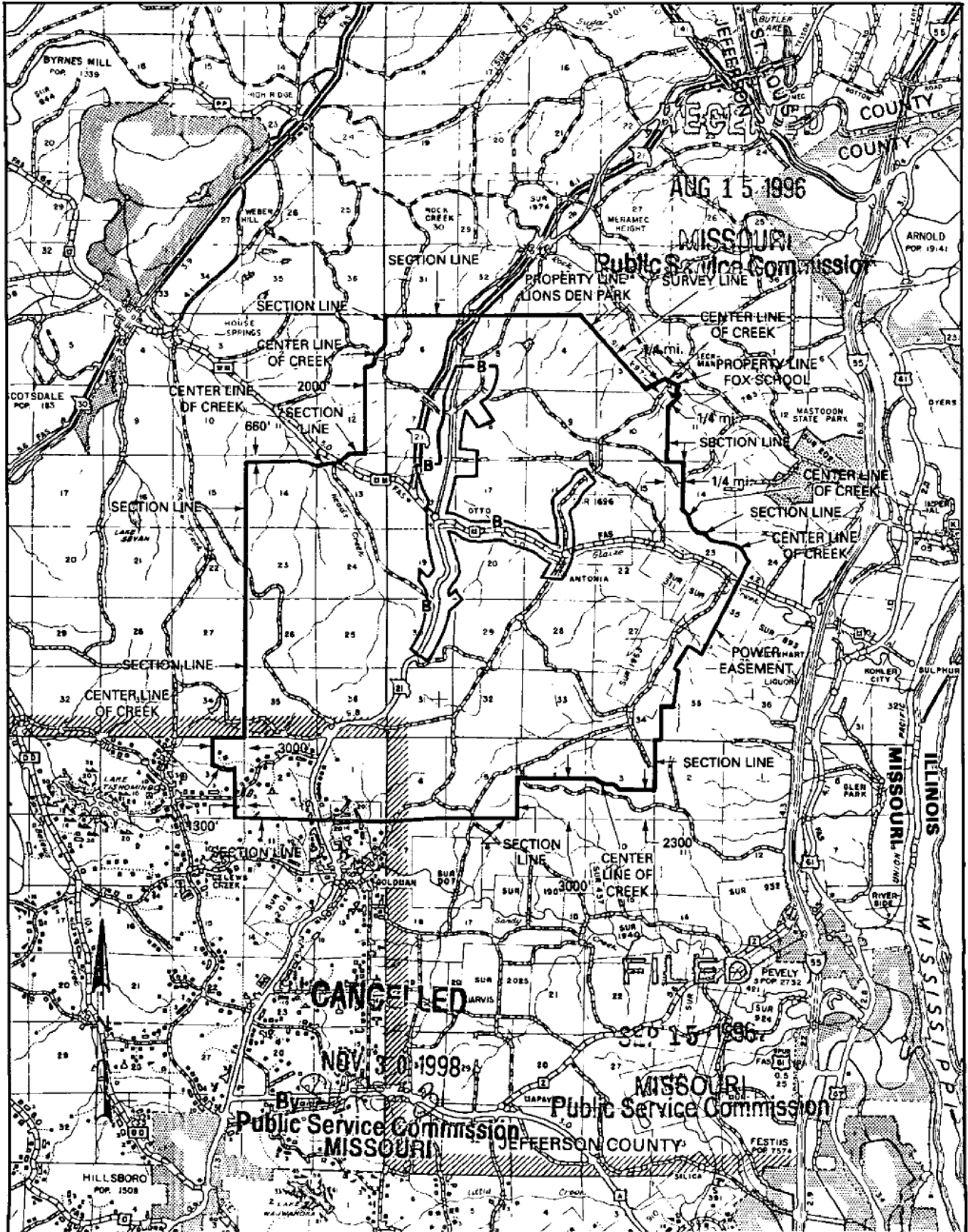
NO SUPPLEMENT TO THIS TARIFF WILL BE ISSUED EXCEPT FOR THE PURPOSE OF CANCELING THIS TARIFF.

P. S. C. Mo. No. 17

Antonia, Missouri

7th REVISED SHEET 3  
REPLACING 6th REVISED SHEET 3

# EXCHANGE AREA MAP



T43N  
T42N

T42N  
T41N

T41N  
T40N

**CANCELLED**  
NOV 30 1998

**FILED**  
SEP 15 1996

R4E | R5E

R5E | R6E

By HORACE WILKINS, JR. President - Missouri  
Southwestern Bell Telephone Company  
St. Louis, Missouri

Issued: August 15, 1996

Effective: September 15, 1996

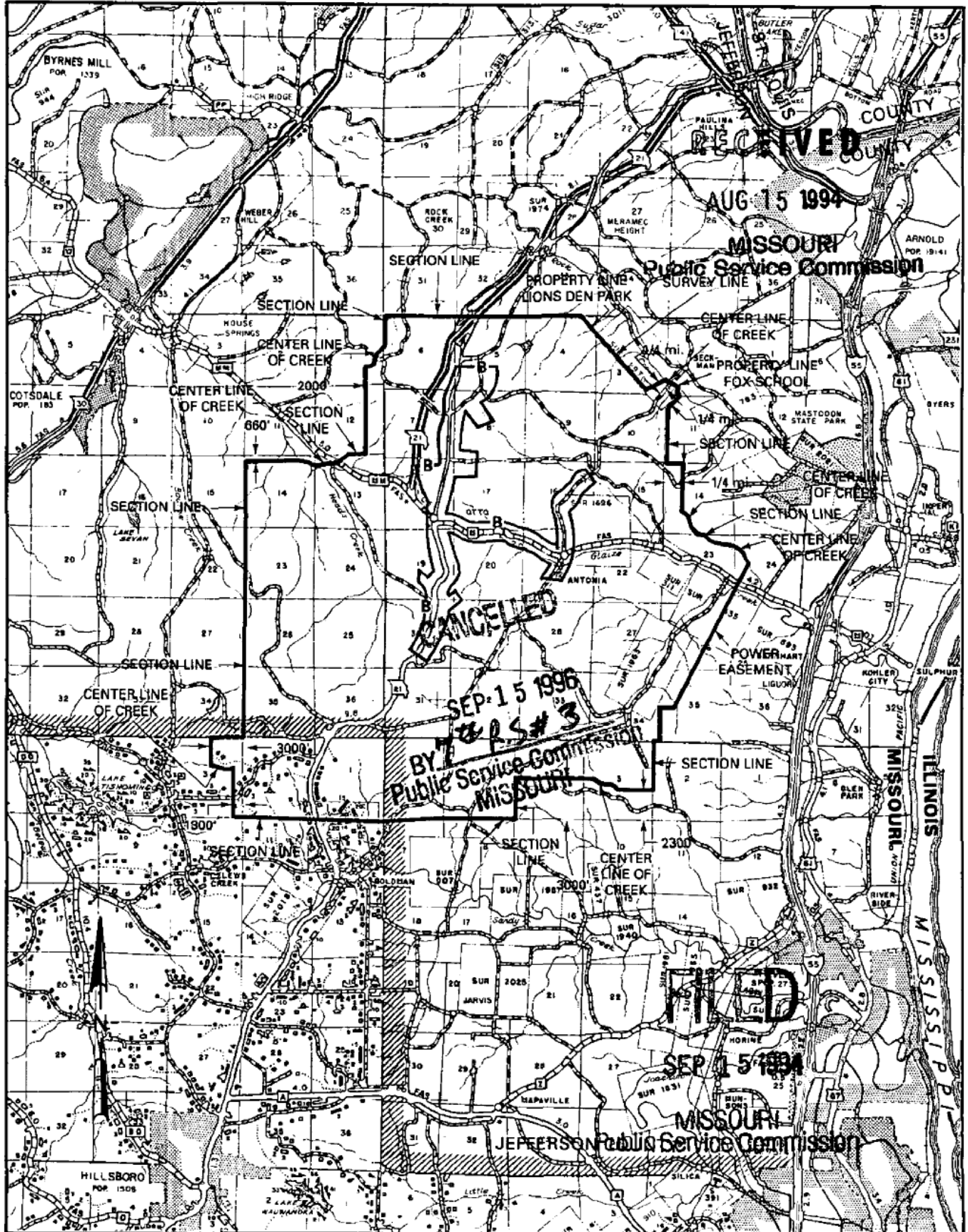
NO SUPPLEMENT TO THIS TARIFF WILL BE ISSUED EXCEPT FOR THE PURPOSE OF CANCELING THIS TARIFF.

P. S. C. Mo. No. 17

Antonia, Missouri

6th REVISED SHEET 3  
REPLACING 5th REVISED SHEET 3

### EXCHANGE AREA MAP



T43N  
T42N

T42N  
T41N

T41N  
T40N

R4E | R5E

R5E | R6E

By M. H. SCHULTEIS, Executive Director - External Affairs  
Southwestern Bell Telephone Company  
St. Louis, Missouri

Issued: August 15, 1994

Effective: September 15, 1994

**P.S.C. Mo. - No. 17**  
**LOCAL EXCHANGE - MISSOURI PORTION TARIFF**

Southwestern Bell Telephone  
Company d/b/a AT&T Missouri

Section 1  
49th Revised Sheet 1  
Replacing 48th Revised Sheet 1

---

The LOCAL EXCHANGE - MISSOURI PORTION TARIFF, P.S.C. Mo.-No. 17, Sections 1 through 6 have been withdrawn. Information regarding rates, terms and conditions for Sections 1 through 6 now appears in the Missouri Guidebook at [att.com/servicepublications](http://att.com/servicepublications).

Boundary Maps for the Company's exchanges and base rate areas remain on file in this tariff at the Missouri Public Service Commission.

**TRADEMARKS AND SERVICE MARKS**

Telcordia® and Common Language® are registered trademarks and iconectiv, CLCI, CLEI, CLFI, CLLI, USOC, FID, NC, NCI and NC/NCI, are trademarks of Telcordia Technologies, Inc. The Common Language codes identified herein are the proprietary information of Telcordia Technologies, Inc. d/b/a iconectiv ("iconectiv") and are licensed to AT&T Services, Inc. The Common Language codes provided herein, if applicable, are solely for the purpose of this Tariff and may not be reproduced, stored or used for any other purpose without the express, written consent of iconectiv.

(AT)

(AT)

CANCELLED - Missouri Public Service Commission - 05/01/2024 - TN-2024-0278 - JI-2024-0142

---

Issued: September 12, 2014

By JOHN SONDAG, President - Missouri  
St. Louis, Missouri

Effective: October 12, 2014

**FILED**  
**Missouri Public**  
**Service Commission**  
**JI-2015-0113**

**P.S.C. Mo. - No. 17**  
**LOCAL EXCHANGE - MISSOURI PORTION TARIFF**

Southwestern Bell Telephone  
Company d/b/a AT&T Missouri

Section 1  
48th Revised Sheet 1  
Replacing 47th Revised Sheet 1

---

The LOCAL EXCHANGE - MISSOURI PORTION TARIFF, P.S.C. Mo.-No. 17, Sections 1 through 6 have (CT)  
been withdrawn. Information regarding rates, terms and conditions for Sections 1 through 6 now appears in (CT)  
the Missouri Guidebook at [att.com/servicepublications](http://att.com/servicepublications). (CT)

Boundary Maps for the Company's exchanges and base rate areas remain on file in this tariff at the Missouri (CT)  
Public Service Commission. (CT)

(RT)

(RT)

---

Issued: April 1, 2014  
**CANCELED**  
October 12, 2014  
Missouri Public  
Service Commission  
JI-2015-0113

By JOHN SONDRAG, President - Missouri  
St. Louis, Missouri

Effective: May 1, 2014  
**FILED**  
Missouri Public  
Service Commission  
JI-2014-0379

P.S.C. Mo. - No. 17  
LOCAL EXCHANGE - MISSOURI PORTION TARIFF

Southwestern Bell Telephone  
Company d/b/a AT&T Missouri

Section 1  
47th Revised Sheet 1  
Replacing 46th Revised Sheet 1

MISSOURI PORTION - ATCHISON, KANSAS EXCHANGE

1. GENERAL

This Tariff is governed, except as otherwise specified herein, by all other Tariffs of the Southwestern Bell Telephone Company on file in the State of Missouri, which are hereby made a part of this Tariff. Unless otherwise specified, the charges quoted in this Tariff or in any other Missouri Tariff are for periods of one month, are payable monthly in advance and entitle the customer to exchange telephone service within the Atchison Exchange Area. This Exchange Area includes, in addition to the Missouri Portion, certain territory in the State of Kansas comprising the City of Atchison and vicinity, as shown on the Exchange Area Map for this exchange.

2. RATES

- A. The rates for main service do not include a Telephone Company-provided instrument, except for Semi-Public Service, which includes one station equipped with a coin-collecting device.
- B. Within the Missouri portion of the exchange, rates will be frozen until March 1, 1995. Urban mileage charges as set forth in Paragraph C. and D. following, apply as applicable, in addition to exchange rates when service is provided outside the Base Rate Area. Exchange rates are as follows:

1. Flat Rate Service	Current Rates(1)(2)	
	<u>Business</u>	<u>Residence</u>
One-Party	\$75.50	\$ 24.00 (CR)
Lifeline	N/A	(3)
One-Party Multiline	75.50	N/A
PBX Trunk	75.50	14.70

- (1) For the period of November 26, 2008 through November 25, 2012, prices for residence basic local service in this exchange will be governed by Section 392.245.5(7) RSMo.
- (2) For the period of November 26, 2008 through November 25, 2012, prices for business basic local service in this exchange will be governed by Section 392.245.5(7) RSMo.
- (3) A customer eligible under established criteria can receive a discount from his or her bill for residential essential local telecommunications services, in accordance with P.S.C. Mo. – No. 24, Local Exchange Tariff, Section 1.2.2.E, regarding Lifeline Service.

Issued: December 24, 2013

By JOHN SONDRAG, President - Missouri  
St. Louis, Missouri

Effective: January 3, 2014

CANCELLED  
May 1, 2014  
Missouri Public  
Service Commission  
JI-2014-0379

FILED  
Missouri Public  
Service Commission  
JI-2014-0269



**P.S.C. Mo. - No. 17**  
**LOCAL EXCHANGE - MISSOURI PORTION TARIFF**

Southwestern Bell Telephone  
Company d/b/a AT&T Missouri

Section 1  
46th Revised Sheet 1  
Replacing 45th Revised Sheet 1

**MISSOURI PORTION - ATCHISON, KANSAS EXCHANGE**

**1. GENERAL**

This Tariff is governed, except as otherwise specified herein, by all other Tariffs of the Southwestern Bell Telephone Company on file in the State of Missouri, which are hereby made a part of this Tariff. Unless otherwise specified, the charges quoted in this Tariff or in any other Missouri Tariff are for periods of one month, are payable monthly in advance and entitle the customer to exchange telephone service within the Atchison Exchange Area. This Exchange Area includes, in addition to the Missouri Portion, certain territory in the State of Kansas comprising the City of Atchison and vicinity, as shown on the Exchange Area Map for this exchange.

**2. RATES**

- A. The rates for main service do not include a Telephone Company-provided instrument, except for Semi-Public Service, which includes one station equipped with a coin-collecting device.
- B. Within the Missouri portion of the exchange, rates will be frozen until March 1, 1995. Urban mileage charges as set forth in Paragraph C. and D. following, apply as applicable, in addition to exchange rates when service is provided outside the Base Rate Area. Exchange rates are as follows:

1. Flat Rate Service	<u>Current Rates(1)(2)</u>	
	<u>Business</u>	<u>Residence</u>
One-Party	\$75.50 (CR)	\$ 23.00
Lifeline	N/A	(3)
One-Party Multiline	75.50 (CR)	N/A
PBX Trunk	75.50 (CR)	14.70

- (1) For the period of November 26, 2008 through November 25, 2012, prices for residence basic local service in this exchange will be governed by Section 392.245.5(7) RSMo.
- (2) For the period of November 26, 2008 through November 25, 2012, prices for business basic local service in this exchange will be governed by Section 392.245.5(7) RSMo.
- (3) A customer eligible under established criteria can receive a discount from his or her bill for residential essential local telecommunications services, in accordance with P.S.C. Mo. – No. 24, Local Exchange Tariff, Section 1.2.2.E, regarding Lifeline Service.

Issued: November 21, 2013

Effective: December 1, 2013

**CANCELLED**  
January 3, 2014  
Missouri Public  
Service Commission  
JI-2014-0269

By JOHN SONDAG, President - Missouri  
St. Louis, Missouri

**FILED**  
Missouri Public  
Service Commission  
JI-2014-0226

P.S.C. Mo. - No. 17  
LOCAL EXCHANGE - MISSOURI PORTION TARIFF

Southwestern Bell Telephone  
Company d/b/a AT&T Missouri

Section 1  
45th Revised Sheet 1  
Replacing 44th Revised Sheet 1

MISSOURI PORTION - ATCHISON, KANSAS EXCHANGE

1. GENERAL

This Tariff is governed, except as otherwise specified herein, by all other Tariffs of the Southwestern Bell Telephone Company on file in the State of Missouri, which are hereby made a part of this Tariff. Unless otherwise specified, the charges quoted in this Tariff or in any other Missouri Tariff are for periods of one month, are payable monthly in advance and entitle the customer to exchange telephone service within the Atchison Exchange Area. This Exchange Area includes, in addition to the Missouri Portion, certain territory in the State of Kansas comprising the City of Atchison and vicinity, as shown on the Exchange Area Map for this exchange.

2. RATES

- A. The rates for main service do not include a Telephone Company-provided instrument, except for Semi-Public Service, which includes one station equipped with a coin-collecting device.
- B. Within the Missouri portion of the exchange, rates will be frozen until March 1, 1995. Urban mileage charges as set forth in Paragraph C. and D. following, apply as applicable, in addition to exchange rates when service is provided outside the Base Rate Area. Exchange rates are as follows:

1. Flat Rate Service	Current Rates(1)(2)	
	<u>Business</u>	<u>Residence</u>
One-Party	\$59.00 (CR)	\$ 23.00
Lifeline	N/A	(3)
One-Party Multiline	65.00 (CR)	N/A
PBX Trunk	65.00 (CR)	14.70

- (1) For the period of November 26, 2008 through November 25, 2012, prices for residence basic local service in this exchange will be governed by Section 392.245.5(7) RSMo.
- (2) For the period of November 26, 2008 through November 25, 2012, prices for business basic local service in this exchange will be governed by Section 392.245.5(7) RSMo.
- (3) A customer eligible under established criteria can receive a discount from his or her bill for residential essential local telecommunications services, in accordance with P.S.C. Mo. – No. 24, Local Exchange Tariff, Section 1.2.2.E, regarding Lifeline Service.

Issued: June 25, 2013

Effective: July 5, 2013

CANCELLED  
December 1, 2013  
Missouri Public  
Service Commission  
JI-2014-0226

By JOHN SONDRAG, President - Missouri  
St. Louis, Missouri

FILED  
Missouri Public  
Service Commission  
JI-2013-0608

P.S.C. Mo. - No. 17  
LOCAL EXCHANGE - MISSOURI PORTION TARIFF

Southwestern Bell Telephone  
Company d/b/a AT&T Missouri

Section 1  
44th Revised Sheet 1  
Replacing 43rd Revised Sheet 1

MISSOURI PORTION - ATCHISON, KANSAS EXCHANGE

1. GENERAL

This Tariff is governed, except as otherwise specified herein, by all other Tariffs of the Southwestern Bell Telephone Company on file in the State of Missouri, which are hereby made a part of this Tariff. Unless otherwise specified, the charges quoted in this Tariff or in any other Missouri Tariff are for periods of one month, are payable monthly in advance and entitle the customer to exchange telephone service within the Atchison Exchange Area. This Exchange Area includes, in addition to the Missouri Portion, certain territory in the State of Kansas comprising the City of Atchison and vicinity, as shown on the Exchange Area Map for this exchange.

2. RATES

- A. The rates for main service do not include a Telephone Company-provided instrument, except for Semi-Public Service, which includes one station equipped with a coin-collecting device.
- B. Within the Missouri portion of the exchange, rates will be frozen until March 1, 1995. Urban mileage charges as set forth in Paragraph C. and D. following, apply as applicable, in addition to exchange rates when service is provided outside the Base Rate Area. Exchange rates are as follows:

1. Flat Rate Service	Current Rates(1)(2)		
	Business	Residence	
One-Party Lifeline	\$48.00	\$ 23.00	(CR)
One-Party Multiline	N/A	(3)	
PBX Trunk	62.00	N/A	(CR)
	62.00 (CR)	14.70	

- (1) For the period of November 26, 2008 through November 25, 2012, prices for residence basic local service in this exchange will be governed by Section 392.245.5(7) RSMo.
- (2) For the period of November 26, 2008 through November 25, 2012, prices for business basic local service in this exchange will be governed by Section 392.245.5(7) RSMo.
- (3) A customer eligible under established criteria can receive a discount from his or her bill for residential essential local telecommunications services, in accordance with P.S.C. Mo. – No. 24, Local Exchange Tariff, Section 1.2.2.E, regarding Lifeline Service.

Issued: December 24, 2012

Effective: January 3, 2013

CANCELLED  
July 5, 2013  
Missouri Public  
Service Commission  
JI-2013-0608

By JOHN SONDAG, President - Missouri  
St. Louis, Missouri

FILED  
Missouri Public  
Service Commission  
JI-2013-0285

**P.S.C. Mo. - No. 17**  
**LOCAL EXCHANGE - MISSOURI PORTION TARIFF**

Southwestern Bell Telephone  
Company d/b/a AT&T Missouri

Section 1  
43rd Revised Sheet 1  
Replacing 42nd Revised Sheet 1

**MISSOURI PORTION - ATCHISON, KANSAS EXCHANGE**

**1. GENERAL**

This Tariff is governed, except as otherwise specified herein, by all other Tariffs of the Southwestern Bell Telephone Company on file in the State of Missouri, which are hereby made a part of this Tariff. Unless otherwise specified, the charges quoted in this Tariff or in any other Missouri Tariff are for periods of one month, are payable monthly in advance and entitle the customer to exchange telephone service within the Atchison Exchange Area. This Exchange Area includes, in addition to the Missouri Portion, certain territory in the State of Kansas comprising the City of Atchison and vicinity, as shown on the Exchange Area Map for this exchange.

**2. RATES**

- A. The rates for main service do not include a Telephone Company-provided instrument, except for Semi-Public Service, which includes one station equipped with a coin-collecting device.
- B. Within the Missouri portion of the exchange, rates will be frozen until March 1, 1995. Urban mileage charges as set forth in Paragraph C. and D. following, apply as applicable, in addition to exchange rates when service is provided outside the Base Rate Area. Exchange rates are as follows:

1. Flat Rate Service	<u>Current Rates(1)(2)</u>	
	<u>Business</u>	<u>Residence</u>
One-Party	\$39.00	\$ 19.50 (CR)
Lifeline	N/A	(3)
One-Party Multiline	54.50	N/A
PBX Trunk	54.50	14.70

- (1) For the period of November 26, 2008 through November 25, 2012, prices for residence basic local service in this exchange will be governed by Section 392.245.5(7) RSMo.
- (2) For the period of November 26, 2008 through November 25, 2012, prices for business basic local service in this exchange will be governed by Section 392.245.5(7) RSMo.
- (3) A customer eligible under established criteria can receive a discount from his or her bill for residential essential local telecommunications services, in accordance with P.S.C. Mo. – No. 24, Local Exchange Tariff, Section 1.2.2.E, regarding Lifeline Service.

Issued: July 3, 2012

Effective: July 13, 2012

CANCELLED  
January 3, 2013  
Missouri Public  
Service Commission  
JI-2013-0285

By JOHN SONDAG, President - Missouri  
St. Louis, Missouri

FILED  
Missouri Public  
Service Commission  
JI-2013-0013

P.S.C. Mo. - No. 17  
LOCAL EXCHANGE - MISSOURI PORTION TARIFF

Southwestern Bell Telephone  
Company d/b/a AT&T Missouri

Section 1  
42nd Revised Sheet 1  
Replacing 41st Revised Sheet 1

MISSOURI PORTION - ATCHISON, KANSAS EXCHANGE

1. GENERAL

This Tariff is governed, except as otherwise specified herein, by all other Tariffs of the Southwestern Bell Telephone Company on file in the State of Missouri, which are hereby made a part of this Tariff. Unless otherwise specified, the charges quoted in this Tariff or in any other Missouri Tariff are for periods of one month, are payable monthly in advance and entitle the customer to exchange telephone service within the Atchison Exchange Area. This Exchange Area includes, in addition to the Missouri Portion, certain territory in the State of Kansas comprising the City of Atchison and vicinity, as shown on the Exchange Area Map for this exchange.

2. RATES

- A. The rates for main service do not include a Telephone Company-provided instrument, except for Semi-Public Service, which includes one station equipped with a coin-collecting device.
- B. Within the Missouri portion of the exchange, rates will be frozen until March 1, 1995. Urban mileage charges as set forth in Paragraph C. and D. following, apply as applicable, in addition to exchange rates when service is provided outside the Base Rate Area. Exchange rates are as follows:

1. Flat Rate Service	Current Rates(1)(2)	
	<u>Business</u>	<u>Residence</u>
One-Party	\$39.00 (CR)	\$ 16.50
Lifeline	N/A	(3)
One-Party Multiline	54.50 (CR)	N/A
PBX Trunk	54.50 (CR)	14.70

- (1) For the period of November 26, 2008 through November 25, 2012, prices for residence basic local service in this exchange will be governed by Section 392.245.5(7) RSMo.
- (2) For the period of November 26, 2008 through November 25, 2012, prices for business basic local service in this exchange will be governed by Section 392.245.5(7) RSMo.
- (3) A customer eligible under established criteria can receive a discount from his or her bill for residential essential local telecommunications services, in accordance with P.S.C. Mo. – No. 24, Local Exchange Tariff, Section 1.2.2.E, regarding Lifeline Service.

Issued: June 25, 2012

Effective: July 5, 2012

CANCELLED  
July 13, 2012  
Missouri Public  
Service Commission  
JI-2013-0013

By JOHN SONDAG, President - Missouri  
St. Louis, Missouri

FILED  
Missouri Public  
Service Commission  
JI-2012-0834

P.S.C. Mo. - No. 17  
LOCAL EXCHANGE - MISSOURI PORTION TARIFF

Southwestern Bell Telephone  
Company d/b/a AT&T Missouri

Section 1  
41st Revised Sheet 1  
Replacing 40th Revised Sheet 1

MISSOURI PORTION - ATCHISON, KANSAS EXCHANGE

1. GENERAL

This Tariff is governed, except as otherwise specified herein, by all other Tariffs of the Southwestern Bell Telephone Company on file in the State of Missouri, which are hereby made a part of this Tariff. Unless otherwise specified, the charges quoted in this Tariff or in any other Missouri Tariff are for periods of one month, are payable monthly in advance and entitle the customer to exchange telephone service within the Atchison Exchange Area. This Exchange Area includes, in addition to the Missouri Portion, certain territory in the State of Kansas comprising the City of Atchison and vicinity, as shown on the Exchange Area Map for this exchange.

2. RATES

- A. The rates for main service do not include a Telephone Company-provided instrument, except for Semi-Public Service, which includes one station equipped with a coin-collecting device.
- B. Within the Missouri portion of the exchange, rates will be frozen until March 1, 1995. Urban mileage charges as set forth in Paragraph C. and D. following, apply as applicable, in addition to exchange rates when service is provided outside the Base Rate Area. Exchange rates are as follows:

1. Flat Rate Service	Current Rates(1)(2)	
	<u>Business</u>	<u>Residence</u>
One-Party	\$34.00	\$ 16.50
Lifeline	N/A	(3)
One-Party Multiline	43.00	N/A
PBX Trunk	43.00	14.70

(RT)  
(RT)  
(RT)

- (1) For the period of November 26, 2008 through November 25, 2012, prices for residence basic local service in this exchange will be governed by Section 392.245.5(7) RSMo.
- (2) For the period of November 26, 2008 through November 25, 2012, prices for business basic local service in this exchange will be governed by Section 392.245.5(7) RSMo.
- (3) A customer eligible under established criteria can receive a discount from his or her bill for residential essential local telecommunications services, in accordance with P.S.C. Mo. – No. 24, Local Exchange Tariff, Section 1.2.2.E, regarding Lifeline Service.

Issued: November 15, 2011

Effective: December 15, 2011

CANCELLED  
July 5, 2012  
Missouri Public  
Service Commission  
JI-2012-0834

By JOHN SONDRAG, President - Missouri  
St. Louis, Missouri

FILED  
Missouri Public  
Service Commission  
JI-2012-0259

**P.S.C. Mo. - No. 17  
LOCAL EXCHANGE - MISSOURI PORTION TARIFF**

Southwestern Bell Telephone  
Company d/b/a AT&T Missouri

Section 1  
40th Revised Sheet 1  
Replacing 39th Revised Sheet 1

**MISSOURI PORTION - ATCHISON, KANSAS EXCHANGE**

**1. GENERAL**

This Tariff is governed, except as otherwise specified herein, by all other Tariffs of the Southwestern Bell Telephone Company on file in the State of Missouri, which are hereby made a part of this Tariff. Unless otherwise specified, the charges quoted in this Tariff or in any other Missouri Tariff are for periods of one month, are payable monthly in advance and entitle the customer to exchange telephone service within the Atchison Exchange Area. This Exchange Area includes, in addition to the Missouri Portion, certain territory in the State of Kansas comprising the City of Atchison and vicinity, as shown on the Exchange Area Map for this exchange.

**2. RATES**

- A. The rates for main service do not include a Telephone Company-provided instrument, except for Semi-Public Service, which includes one station equipped with a coin-collecting device.
- B. Within the Missouri portion of the exchange, rates will be frozen until March 1, 1995. Urban mileage charges as set forth in Paragraph C. and D. following, apply as applicable, in addition to exchange rates when service is provided outside the Base Rate Area. Exchange rates are as follows:

		Current Rates(1)(2)	
		Business	Residence
1.	Flat Rate Service		
	One-Party	\$34.00 (CR)	\$ 16.50
	Lifeline	N/A	(3)
	One-Party Multiline	43.00 (CR)	N/A
	PBX Trunk	43.00 (CR)	14.70
2.	Message Rate Service	Rate	
	Business One-Party	\$26.00 (CR)	85      \$ .06

- (1) For the period of November 26, 2008 through November 25, 2012, prices for residence basic local service in this exchange will be governed by Section 392.245.5(7) RSMo.
- (2) For the period of November 26, 2008 through November 25, 2012, prices for business basic local service in this exchange will be governed by Section 392.245.5(7) RSMo.
- (3) A customer eligible under established criteria can receive a discount from his or her bill for residential essential local telecommunications services, in accordance with P.S.C. Mo. – No. 24, Local Exchange Tariff, Section 1.2.2.E, regarding Lifeline Service.

Issued: October 28, 2011

Effective: November 9, 2011

**CANCELED**  
December 15, 2011  
Missouri Public  
Service Commission  
JI-2012-0259

By JOHN SONDAG, President - Missouri  
St. Louis, Missouri

**FILED**  
Missouri Public  
Service Commission  
JI-2012-0194

**P.S.C. Mo. - No. 17**  
**LOCAL EXCHANGE - MISSOURI PORTION TARIFF**

Southwestern Bell Telephone  
 Company d/b/a AT&T Missouri

Section 1  
 39th Revised Sheet 1  
 Replacing 38th Revised Sheet 1

**MISSOURI PORTION - ATCHISON, KANSAS EXCHANGE**

**1. GENERAL**

This Tariff is governed, except as otherwise specified herein, by all other Tariffs of the Southwestern Bell Telephone Company on file in the State of Missouri, which are hereby made a part of this Tariff. Unless otherwise specified, the charges quoted in this Tariff or in any other Missouri Tariff are for periods of one month, are payable monthly in advance and entitle the customer to exchange telephone service within the Atchison Exchange Area. This Exchange Area includes, in addition to the Missouri Portion, certain territory in the State of Kansas comprising the City of Atchison and vicinity, as shown on the Exchange Area Map for this exchange.

**2. RATES**

- A. The rates for main service do not include a Telephone Company-provided instrument, except for Semi-Public Service, which includes one station equipped with a coin-collecting device.
- B. Within the Missouri portion of the exchange, rates will be frozen until March 1, 1995. Urban mileage charges as set forth in Paragraph C. and D. following, apply as applicable, in addition to exchange rates when service is provided outside the Base Rate Area. Exchange rates are as follows:

		Current Rates(1)(2)	
		Business	Residence
1.	Flat Rate Service		
	One-Party	\$27.00	\$ 16.50 (CR)
	Lifeline	N/A	(3)
	One-Party Multiline	36.00	N/A
	PBX Trunk	36.00	14.70
	2. Message Rate Service	Rate	Local Message Allowance
	Business One-Party	\$25.50	85
			Additional Local Allowance
			\$.06

- (1) For the period of November 26, 2008 through November 25, 2012, prices for residence basic local service in this exchange will be governed by Section 392.245.5(7) RSMo.
- (2) For the period of November 26, 2008 through November 25, 2012, prices for business basic local service in this exchange will be governed by Section 392.245.5(7) RSMo.
- (3) A customer eligible under established criteria can receive a discount from his or her bill for residential essential local telecommunications services, in accordance with P.S.C. Mo. – No. 24, Local Exchange Tariff, Section 1.2.2.E, regarding Lifeline Service.



P.S.C. Mo. - No. 17  
LOCAL EXCHANGE - MISSOURI PORTION TARIFF

Southwestern Bell Telephone  
Company d/b/a AT&T Missouri

Section 1  
38th Revised Sheet 1  
Replacing 37th Revised Sheet 1

MISSOURI PORTION - ATCHISON, KANSAS EXCHANGE

1. GENERAL

This Tariff is governed, except as otherwise specified herein, by all other Tariffs of the Southwestern Bell Telephone Company on file in the State of Missouri, which are hereby made a part of this Tariff. Unless otherwise specified, the charges quoted in this Tariff or in any other Missouri Tariff are for periods of one month, are payable monthly in advance and entitle the customer to exchange telephone service within the Atchison Exchange Area. This Exchange Area includes, in addition to the Missouri Portion, certain territory in the State of Kansas comprising the City of Atchison and vicinity, as shown on the Exchange Area Map for this exchange.

2. RATES

- A. The rates for main service do not include a Telephone Company-provided instrument, except for Semi-Public Service, which includes one station equipped with a coin-collecting device.
- B. Within the Missouri portion of the exchange, rates will be frozen until March 1, 1995. Urban mileage charges as set forth in Paragraph C. and D. following, apply as applicable, in addition to exchange rates when service is provided outside the Base Rate Area. Exchange rates are as follows:

		<u>Current Rates(1)(2)</u>	
		<u>Business</u>	<u>Residence</u>
1.	Flat Rate Service		
	One-Party	\$27.00 (CR)	\$ 14.51
	Lifeline	N/A	(3)
	One-Party Multiline	36.00 (CR)	N/A
	PBX Trunk	36.00 (CR)	14.70
2.	Message Rate Service	<u>Local Message Allowance</u>	<u>Additional Local Allowance</u>
	Business One-Party	<u>Rate</u> \$25.50 (CR)	85 \$.06

- (1) For the period of November 26, 2008 through November 25, 2012, prices for residence basic local service in this exchange will be governed by Section 392.245.5(7) RSMo.
- (2) For the period of November 26, 2008 through November 25, 2012, prices for business basic local service in this exchange will be governed by Section 392.245.5(7) RSMo.
- (3) A customer eligible under established criteria can receive a discount from his or her bill for residential essential local telecommunications services, in accordance with P.S.C. Mo. – No. 24, Local Exchange Tariff, Section 1.2.2.E, regarding Lifeline Service.

Issued: May 18, 2011

CANCELED  
JI-2011-0671  
Missouri Public  
Service Commission  
JI-2011-0671

By JOHN SONDAG, President - Missouri  
St. Louis, Missouri

Effective: May 28, 2011

FILED  
Missouri Public  
Service Commission  
JI-2011-0578

**P.S.C. Mo. - No. 17**  
**LOCAL EXCHANGE - MISSOURI PORTION TARIFF**

Southwestern Bell Telephone  
 Company d/b/a AT&T Missouri

Section 1  
 37th Revised Sheet 1  
 Replacing 36th Revised Sheet 1

**MISSOURI PORTION - ATCHISON, KANSAS EXCHANGE**

**1. GENERAL**

This Tariff is governed, except as otherwise specified herein, by all other Tariffs of the Southwestern Bell Telephone Company on file in the State of Missouri, which are hereby made a part of this Tariff. Unless otherwise specified, the charges quoted in this Tariff or in any other Missouri Tariff are for periods of one month, are payable monthly in advance and entitle the customer to exchange telephone service within the Atchison Exchange Area. This Exchange Area includes, in addition to the Missouri Portion, certain territory in the State of Kansas comprising the City of Atchison and vicinity, as shown on the Exchange Area Map for this exchange.

**2. RATES**

- A. The rates for main service do not include a Telephone Company-provided instrument, except for Semi-Public Service, which includes one station equipped with a coin-collecting device.
- B. Within the Missouri portion of the exchange, rates will be frozen until March 1, 1995. Urban mileage charges as set forth in Paragraph C. and D. following, apply as applicable, in addition to exchange rates when service is provided outside the Base Rate Area. Exchange rates are as follows:

		Current Rates(1)(2)	
		Business	Residence
1.	Flat Rate Service		
	One-Party	\$22.00 (CR)	\$ 14.51
	Lifeline	N/A	(3)
	One-Party Multiline	34.00 (CR)	N/A
	PBX Trunk	34.00 (CR)	14.70
		Local Message	Additional Local
2.	Message Rate Service	Rate	Allowance
	Business One-Party	\$25.00	85
			\$.06

- (1) For the period of November 26, 2008 through November 25, 2012, prices for residence basic local service in this exchange will be governed by Section 392.245.5(7) RSMo.
- (2) For the period of November 26, 2008 through November 25, 2012, prices for business basic local service in this exchange will be governed by Section 392.245.5(7) RSMo.
- (3) A customer eligible under established criteria can receive a discount from his or her bill for residential essential local telecommunications services, in accordance with P.S.C. Mo. – No. 24, Local Exchange Tariff, Section 1.2.2.E, regarding Lifeline Service.

Issued: December 28, 2010

Effective: January 7, 2011

CANCELLED  
 May 28, 2011  
 Missouri Public  
 Service Commission  
 JI-2011-0578

By JOHN SONDRAG, President - Missouri  
 St. Louis, Missouri

FILED  
 Missouri Public  
 Service Commission  
 JI-2011-0306

**P.S.C. Mo. - No. 17  
LOCAL EXCHANGE - MISSOURI PORTION TARIFF**

Southwestern Bell Telephone  
Company d/b/a AT&T Missouri

Section 1  
36th Revised Sheet 1  
Replacing 35th Revised Sheet 1

**MISSOURI PORTION - ATCHISON, KANSAS EXCHANGE**

**1. GENERAL**

This Tariff is governed, except as otherwise specified herein, by all other Tariffs of the Southwestern Bell Telephone Company on file in the State of Missouri, which are hereby made a part of this Tariff. Unless otherwise specified, the charges quoted in this Tariff or in any other Missouri Tariff are for periods of one month, are payable monthly in advance and entitle the customer to exchange telephone service within the Atchison Exchange Area. This Exchange Area includes, in addition to the Missouri Portion, certain territory in the State of Kansas comprising the City of Atchison and vicinity, as shown on the Exchange Area Map for this exchange.

**2. RATES**

- A. The rates for main service do not include a Telephone Company-provided instrument, except for Semi-Public Service, which includes one station equipped with a coin-collecting device.
- B. Within the Missouri portion of the exchange, rates will be frozen until March 1, 1995. Urban mileage charges as set forth in Paragraph C. and D. following, apply as applicable, in addition to exchange rates when service is provided outside the Base Rate Area. Exchange rates are as follows:

		Current Rates(1)(2)	
		Business	Residence
1.	Flat Rate Service		
	One-Party	\$18.50	\$ 14.51 (CR)
	Lifeline	N/A	(3)
	One-Party Multiline	31.00	N/A
	PBX Trunk	31.00	14.70
	2. Message Rate Service	Rate	Local Message Allowance
	Business One-Party	\$25.00	Additional Local Allowance
			85
			\$.06

- (1) For the period of November 26, 2008 through November 25, 2012, prices for residence basic local service in this exchange will be governed by Section 392.245.5(7) RSMo.
- (2) For the period of November 26, 2008 through November 25, 2012, prices for business basic local service in this exchange will be governed by Section 392.245.5(7) RSMo.
- (3) A customer eligible under established criteria can receive a discount from his or her bill for residential essential local telecommunications services, in accordance with P.S.C. Mo. – No. 24, Local Exchange Tariff, Section 1.2.2.E, regarding Lifeline Service.

Issued: June 29, 2010

Effective: July 9, 2010

CANCELLED  
January 7, 2011  
Missouri Public  
Service Commission  
JI-2011-0306

By DAVID NICHOLS, President - Missouri  
St. Louis, Missouri

FILED  
Missouri Public  
Service Commission  
JI-2010-0755

**P.S.C. Mo. - No. 17**  
**LOCAL EXCHANGE - MISSOURI PORTION TARIFF**

Southwestern Bell Telephone  
Company d/b/a AT&T Missouri

Section 1  
35th Revised Sheet 1  
Replacing 34th Revised Sheet 1

**MISSOURI PORTION - ATCHISON, KANSAS EXCHANGE**

**1. GENERAL**

This Tariff is governed, except as otherwise specified herein, by all other Tariffs of the Southwestern Bell Telephone Company on file in the State of Missouri, which are hereby made a part of this Tariff. Unless otherwise specified, the charges quoted in this Tariff or in any other Missouri Tariff are for periods of one month, are payable monthly in advance and entitle the customer to exchange telephone service within the Atchison Exchange Area. This Exchange Area includes, in addition to the Missouri Portion, certain territory in the State of Kansas comprising the City of Atchison and vicinity, as shown on the Exchange Area Map for this exchange.

**2. RATES**

- A. The rates for main service do not include a Telephone Company-provided instrument, except for Semi-Public Service, which includes one station equipped with a coin-collecting device.
- B. Within the Missouri portion of the exchange, rates will be frozen until March 1, 1995. Urban mileage charges as set forth in Paragraph C. and D. following, apply as applicable, in addition to exchange rates when service is provided outside the Base Rate Area. Exchange rates are as follows:

		<u>Current Rates(1)(2)</u>	
		<u>Business</u>	<u>Residence</u>
1.	Flat Rate Service		
	One-Party	\$18.50 (CR)	\$ 11.51
	Lifeline	N/A	(3)
	One-Party Multiline	31.00 (CR)	N/A
	PBX Trunk	31.00 (CR)	14.70
2.	Message Rate Service	<u>Local Message</u>	<u>Additional Local</u>
		<u>Rate</u>	<u>Allowance</u>
	Business One-Party	\$25.00 (CR)	85
			\$.06

- (1) For the period of November 26, 2008 through November 25, 2012, prices for residence basic local service in this exchange will be governed by Section 392.245.5(7) RSMo.
- (2) For the period of November 26, 2008 through November 25, 2012, prices for business basic local service in this exchange will be governed by Section 392.245.5(7) RSMo.
- (3) A customer eligible under established criteria can receive a discount from his or her bill for residential essential local telecommunications services, in accordance with P.S.C. Mo. – No. 24, Local Exchange Tariff, Section 1.2.2.E, regarding Lifeline Service.

**P.S.C. Mo. - No. 17  
LOCAL EXCHANGE - MISSOURI PORTION TARIFF**

Southwestern Bell Telephone  
Company d/b/a AT&T Missouri

Section 1  
34th Revised Sheet 1  
Replacing 33rd Revised Sheet 1

**MISSOURI PORTION - ATCHISON, KANSAS EXCHANGE**

(AT)

**1. GENERAL**

This Tariff is governed, except as otherwise specified herein, by all other Tariffs of the Southwestern Bell Telephone Company on file in the State of Missouri, which are hereby made a part of this Tariff. Unless otherwise specified, the charges quoted in this Tariff or in any other Missouri Tariff are for periods of one month, are payable monthly in advance and entitle the customer to exchange telephone service within the Atchison Exchange Area. This Exchange Area includes, in addition to the Missouri Portion, certain territory in the State of Kansas comprising the City of Atchison and vicinity, as shown on the Exchange Area Map for this exchange.

**2. RATES**

- A. The rates for main service do not include a Telephone Company-provided instrument, except for Semi-Public Service, which includes one station equipped with a coin-collecting device.
- B. Within the Missouri portion of the exchange, rates will be frozen until March 1, 1995. Urban mileage charges as set forth in Paragraph C. and D. following, apply as applicable, in addition to exchange rates when service is provided outside the Base Rate Area. Exchange rates are as follows:

		Current Rates(1)(2)		(AT)
		Business	Residence	
1.	Flat Rate Service			
	One-Party	\$17.56	\$ 11.51	(CR)
	Lifeline	N/A	(3)	(CT)
	One-Party Multiline	20.60	N/A	
	PBX Trunk	29.20	14.70	
		Local Message	Additional Local	
		Allowance	Allowance	
2.	Message Rate Service	Rate		
	Business One-Party	\$12.78	85	\$.06

- (1) For the period of November 26, 2008 through November 25, 2012, prices for residence basic local service in this exchange will be governed by Section 392.245.5(7) RSMo. (AT)
- (2) For the period of November 26, 2008 through November 25, 2012, prices for business basic local service in this exchange will be governed by Section 392.245.5(7) RSMo. (AT)
- (3) A customer eligible under established criteria can receive a discount from his or her bill for residential essential local telecommunications services, in accordance with P.S.C. Mo. – No. 24, Local Exchange Tariff, Section 1.2.2.E, regarding Lifeline Service. (CT)

Issued: July 2, 2009

Effective: July 12, 2009

CANCELLED  
January 7, 2010  
Missouri Public  
Service Commission  
JI-2010-0424

By DAVID NICHOLS, President - Missouri  
St. Louis, Missouri

Filed  
Missouri Public  
Service Commission  
JI-2010-0004

No Supplement to this tariff will be issued except for the purpose of canceling this tariff.

Missouri Portion-  
Atchison, Kansas Exchange  
33rd Revised Sheet 1  
Replacing 32nd Revised Sheet 1

LOCAL EXCHANGE TARIFF

I. GENERAL

This Tariff is governed, except as otherwise specified herein, by all other Tariffs of the Southwestern Bell Telephone Company on file in the State of Missouri, which are hereby made a part of this Tariff. Unless otherwise specified, the charges quoted in this Tariff or in any other Missouri Tariff are for periods of one month, are payable monthly in advance and entitle the customer to exchange telephone service within the Atchison Exchange Area. This Exchange Area includes, in addition to the Missouri Portion, certain territory in the State of Kansas comprising the City of Atchison and vicinity, as shown on the Exchange Area Map for this exchange.

II. RATES

- A. The rates for main service do not include a Telephone Company-provided instrument, except for Semi-Public Service, which includes one station equipped with a coin-collecting device.
- B. Within the Missouri portion of the exchange, rates will be frozen until March 1, 1995. Urban mileage charges as set forth in Paragraph C. and D. following, apply as applicable, in addition to exchange rates when service is provided outside the Base Rate Area. Exchange rates are as follows:

		<u>Current Rates(1)</u>	
		<u>Business</u>	<u>Residence</u>
1.	Flat Rate Service		
	One-Party	\$17.56(CR)	\$ 9.51(CR)
	Lifeline	N/A	(2)
	One-Party Multiline	20.60	N/A
	PBX Trunk	29.20	14.70
		<u>Local Message</u>	<u>Additional Local</u>
2.	Message Rate Service	<u>Allowance</u>	<u>Allowance</u>
	Business One-Party	\$12.78(CR)	85
			\$.06

- (1) See Sheet 2 for maximum allowable rates.
- (2) A customer eligible under established criteria can receive a discount from his or her bill for residential essential local telecommunications services, in accordance with P.S.C. Mo. – No. 24, Local Exchange Tariff, Section 1.2.2.E, regarding Lifeline Service.

Issued: October 17, 2005

Effective: December 1, 2005

By CINDY BRINKLEY, President-SBC Missouri  
Southwestern Bell Telephone, L.P., d/b/a SBC Missouri  
St. Louis, Missouri

No Supplement to this tariff will be issued except for the purpose of canceling this tariff.

Missouri Portion- Atchison, Kansas Exchange 32nd Revised Sheet 1 Replacing 31st Revised Sheet 1

(RT)

LOCAL EXCHANGE TARIFF

I. GENERAL

This Tariff is governed, except as otherwise specified herein, by all other Tariffs of the Southwestern Bell Telephone Company on file in the State of Missouri, which are hereby made a part of this Tariff. Unless otherwise specified, the charges quoted in this Tariff or in any other Missouri Tariff are for periods of one month, are payable monthly in advance and entitle the customer to exchange telephone service within the Atchison Exchange Area. This Exchange Area includes, in addition to the Missouri Portion, certain territory in the State of Kansas comprising the City of Atchison and vicinity, as shown on the Exchange Area Map for this exchange.

II. RATES

- A. The rates for main service do not include a Telephone Company-provided instrument, except for Semi-Public Service, which includes one station equipped with a coin-collecting device.
- B. Within the Missouri portion of the exchange, rates will be frozen until March 1, 1995. Urban mileage charges as set forth in Paragraph C. and D. following, apply as applicable, in addition to exchange rates when service is provided outside the Base Rate Area. Exchange rates are as follows:

		<u>Current Rates(1)</u>	
		<u>Business</u>	<u>Residence</u>
(CT)(CR)	1. Flat Rate Service		
	One-Party	\$17.91	\$ 9.70
	Lifeline	N/A	(2)
	One-Party Multiline PBX Trunk	20.60 29.20	N/A 14.70
		<u>Local Message Allowance</u>	<u>Additional Local Allowance</u>
	2. Message Rate Service	<u>Rate</u>	
	Business One-Party	\$13.03	85 \$.06

- (1) See Sheet 2 for maximum allowable rates.
- (AT) (2) A customer eligible under established criteria can receive a discount from his or her bill for residential essential local telecommunications services, in accordance with P.S.C. Mo. - No. 24, Local Exchange Tariff, Section 1.2.2.E, regarding Lifeline Service.

Issued: April 1, 2005

Effective: May 1, 2005

**CANCELLED**

By CINDY BRINKLEY, President-SBC Missouri  
Southwestern Bell Telephone, L.P., d/b/a SBC Missouri  
St. Louis, Missouri

DEC 01 2005  
By 33<sup>rd</sup> RS 1  
Public Service Commission  
MISSOURI

TO-1998-0329

**FILED  
MO PSC**

No Supplement to this tariff will be issued except for the purpose of canceling this tariff.

Missouri Portion-  
Atchison, Kansas, Exchange  
31st Revised Sheet 1  
Replacing 30th Revised Sheet 1

SOUTHWESTERN BELL TELEPHONE COMPANY  
LOCAL EXCHANGE TARIFF

I. GENERAL

This Tariff is governed, except as otherwise specified herein, by all other Tariffs of the Southwestern Bell Telephone Company on file in the State of Missouri, which are hereby made a part of this Tariff. Unless otherwise specified, the charges quoted in this Tariff or in any other Missouri Tariff are for periods of one month, are payable monthly in advance and entitle the customer to exchange telephone service within the Atchison Exchange Area. This Exchange Area includes, in addition to the Missouri Portion, certain territory in the State of Kansas comprising the City of Atchison and vicinity, as shown on the Exchange Area Map for this exchange.

II. RATES

- A. The rates for main service do not include a Telephone Company-provided instrument, except for Semi-Public Service, which includes one station equipped with a coin-collecting device.
- B. Within the Missouri portion of the exchange, rates will be frozen until March 1, 1995. Urban mileage charges as set forth in Paragraph C. and D. following, apply as applicable, in addition to exchange rates when service is provided outside the Base Rate Area. Exchange rates are as follows:

		Current Rates(1)	
		Business	Residence
1. Flat Rate Service	<p><b>CANCELLED</b></p> <p>MAY 01 2005</p> <p>32nd RS 1</p> <p>Public Service Commission</p> <p>MISSOURI</p>		
One-Party Lifeline(2)		\$17.91(CR)	\$ 9.70(CR)
One-Party Multiline		N/A	6.20(CR)
PBX Trunk		20.60	N/A
		29.20	14.70
2. Message Rate Service	Rate	Local Message Allowance	Additional Local Allowance
Business One-Party	\$13.03(CR)	85	\$ .06

- (1) See Sheet 2 for maximum allowable rates.
- (2) See P.S.C. Mo. – No. 24, Local Exchange Tariff, Section 1.2.2.E, for description, terms and conditions related to Lifeline Service.

Issued: October 15, 2004

Effective: December 1, 2004

By CINDY BRINKLEY, President-SBC Missouri  
Southwestern Bell Telephone, L.P., d/b/a SBC Missouri  
St. Louis, Missouri

**FILED**  
**MO PSC**



(C) No Supplement to this tariff will be issued except for the purpose of canceling this tariff.

Missouri Portion-  
Atchison, Kansas, Exchange  
30th Revised Sheet 1  
Replacing 29th Revised Sheet 1  
Missouri Public

SOUTHWESTERN BELL TELEPHONE COMPANY Service Commission  
LOCAL EXCHANGE TARIFF

REC'D MAY 10 2004

I. GENERAL

This Tariff is governed, except as otherwise specified herein, by all other Tariffs of the Southwestern Bell Telephone Company on file in the State of Missouri, which are hereby made a part of this Tariff. Unless otherwise specified, the charges quoted in this Tariff or in any other Missouri Tariff are for periods of one month, are payable monthly in advance and entitle the customer to exchange telephone service within the Atchison Exchange Area. This Exchange Area includes, in addition to the Missouri Portion, certain territory in the State of Kansas comprising the City of Atchison and vicinity, as shown on the Exchange Area Map for this exchange.

II. RATES

- A. The rates for main service do not include a Telephone Company-provided instrument, except for Semi-Public Service, which includes one station equipped with a coin-collecting device.
- B. Within the Missouri portion of the exchange, rates will be frozen until March 1, 1995. Urban mileage charges as set forth in Paragraph C. and D. following, apply as applicable, in addition to exchange rates when service is provided outside the Base Rate Area. Exchange rates are as follows:

		Current Rates(1)	
		Business	Residence
(AT)	1. Flat Rate Service		
	One-Party	\$18.40	\$ 9.97
	Lifeline(2)	N/A	6.47(NR)
	One-Party Multiline	20.60	N/A
	PBX Trunk	29.20	14.70
	2. Message Rate Service		
		<u>Rate</u>	<u>Local Message Allowance</u>
	Business One-Party	\$13.39	85
			<u>Additional Local Allowance</u>
			\$ .06

**CANCELLED**  
DEC 01 2004  
316 RSD  
Public Service Commission  
MISSOURI

- (1) See Sheet 2 for maximum allowable rates.
- (AT) (2) See P.S.C. Mo. – No. 24, Local Exchange Tariff, Section 1.2.2.E, for description, terms and conditions related to Lifeline Service.

Issued: May 10, 2004

Effective: June 9, 2004

By CINDY BRINKLEY, President-SBC Missouri  
Southwestern Bell Telephone, L.P., d/b/a SBC Missouri  
St. Louis, Missouri

Missouri Public  
Service Commission

FILED JUN 09 2004

No Supplement to this tariff will be issued except for the purpose of canceling this tariff.

Missouri Portion-  
Atchinson, Kansas, Exchange  
29th Revised Sheet 1  
Replacing 28th Revised Sheet 1  
Missouri Public

SOUTHWESTERN BELL TELEPHONE COMPANY  
LOCAL EXCHANGE TARIFF

REC'D OCT 15 2003

I. GENERAL

This Tariff is governed, except as otherwise specified herein, by all other Tariffs of the *Service Commission* Southwestern Bell Telephone Company on file in the State of Missouri, which are hereby made a part of this Tariff. Unless otherwise specified, the charges quoted in this Tariff or in any other Missouri Tariff are for periods of one month, are payable monthly in advance and entitle the customer to exchange telephone service within the Atchison Exchange Area. This Exchange Area includes, in addition to the Missouri Portion, certain territory in the State of Kansas comprising the City of Atchison and vicinity, as shown on the Exchange Area Map for this exchange.

II. RATES

- A. The rates for main service do not include a Telephone Company-provided instrument, except for Semi-Public Service, which includes one station equipped with a coin-collecting device.
- B. Within the Missouri portion of the exchange, rates will be frozen until March 1, 1995. Urban mileage charges as set forth in Paragraph C. and D. following, apply as applicable, in addition to exchange rates when service is provided outside the Base Rate Area. Exchange rates are as follows:

		Current Rates(1)	
		Business	Residence
1.	Flat Rate Service		
	One-Party	\$18.40(CR)	\$ 9.97
	One-Party Multiline	20.60	N/A
	PBX Trunk	29.20	14.70
(CT)	2. Message Rate Service	<u>Rate</u>	<u>Local Message Allowance</u> <u>Additional Local Allowance</u>
	Business One-Party	\$13.39(CR)	85                      \$ .06

(1) See Sheet 2 for maximum allowable rates.

**CANCELLED**

JUN 09 2004  
L. BOHRER  
Public Service Commission  
MISSOURI

Issued: October 15, 2003

Effective: December 1, 2003

By CINDY BRINKLEY, President-SBC Missouri  
Southwestern Bell Telephone, L.P., d/b/a SBC Missouri  
St. Louis, Missouri

Missouri Public  
Service Commission

FILED DEC 01 2003

No Supplement to this tariff will be issued except for the purpose of canceling this tariff.

Missouri Portion-  
Atchison, Kansas, Exchange  
28th Revised Sheet 1  
Replacing 27th Revised Sheet 1

SOUTHWESTERN BELL TELEPHONE COMPANY  
LOCAL EXCHANGE TARIFF

Missouri Public  
Service Commission

REC'D OCT 15 2002

I. GENERAL

This Tariff is governed, except as otherwise specified herein, by all other Tariffs of the Southwestern Bell Telephone Company on file in the State of Missouri, which are hereby made a part of this Tariff. Unless otherwise specified, the charges quoted in this Tariff or in any other Missouri Tariff are for periods of one month, are payable monthly in advance and entitle the customer to exchange telephone service within the Atchison Exchange Area. This Exchange Area includes, in addition to the Missouri Portion, certain territory in the State of Kansas comprising the City of Atchison and vicinity, as shown on the Exchange Area Map for this exchange.

II. RATES

- A. The rates for main service do not include a Telephone Company-provided instrument, except for Semi-Public Service, which includes one station equipped with a coin-collecting device.
- B. Within the Missouri portion of the exchange, rates will be frozen until March 1, 1995. Urban mileage charges as set forth in Paragraph C. and D. following, apply as applicable, in addition to exchange rates when service is provided outside the Base Rate Area. Exchange rates are as follows:

		Current Rates(1)	
		<u>Business</u>	<u>Residence</u>
1. Flat Rate Service	<b>CANCELLED</b>		
One-Party	DEC 01 2003	\$18.41(CR)	\$9.97(CR)
One-Party Multiline	by 29th RS 1	20.60	N/A
PBX Trunk	Public Service Commission MISSOURI	29.20	14.70
2. Message Rate Service	<u>Rate</u>	<u>Local Message Allowance</u>	<u>Add'l Local Allowance</u>
Business One-Party	\$13.40(CR)	85	\$0.06

Missouri Public  
Service Commission

(1) See Sheet 2 for maximum allowable rates.

FILED DEC 01 2002

Issued: October 15, 2002

Effective: December 1, 2002

By CINDY BRINKLEY, President-Missouri  
Southwestern Bell Telephone, L.P., d/b/a Southwestern Bell Telephone Company  
St. Louis, Missouri

MISSOURI PORTION-ATCHISON, KANSAS, EXCHANGE  
27th Revised Sheet 1  
Replacing 26th Revised Sheet 1

No supplement to this tariff will be issued except for the purpose of canceling this tariff.

SOUTHWESTERN BELL TELEPHONE COMPANY  
LOCAL EXCHANGE TARIFF

Missouri Public  
REC'D OCT 01 2001

I. GENERAL

This Tariff is governed, except as otherwise specified herein, by all other Tariffs of the Southwestern Bell Telephone Company on file in the State of Missouri, which are hereby made a part of this Tariff. Unless otherwise specified, the charges quoted in this Tariff or in any other Missouri Tariff are for periods of one month, are payable monthly in advance and entitle the customer to exchange telephone service within the Atchison Exchange Area. This Exchange Area includes, in addition to the Missouri Portion, certain territory in the State of Kansas comprising the City of Atchison and vicinity, as shown on the Exchange Area Map for this exchange.

Service Commission

II. RATES

A. The rates for main service do not include a Telephone Company-provided instrument, except for Semi-Public Service, which includes one station equipped with a coin-collecting device.

B. Within the Missouri portion of the exchange, rates will be frozen until March 1, 1995. Urban mileage charges as set forth in Paragraph C. and D. following, apply as applicable, in addition to exchange rates when service is provided outside the Base Rate Area. Exchange rates are as follows:

**CANCELLED**

Current rates (1)

1. Flat Rate Service		<u>Business</u>	<u>Residence</u>
One-Party		\$18.24 (CR)	\$9.89(CR)
One-Party Multi		20.60	N/A
PBX Trunk		29.20	14.70
2. Message Rate Service		<u>Local Message Allowance</u>	<u>Add'l. Local Allowance</u>
	<u>Rate</u>		
Business One-Party	\$13.28(CR)	85	\$.06

DEC 01 2002  
28 WRSI  
Missouri Public Service Commission  
MISSOURI

(1) See Sheet 2 for maximum allowable rates.

Issued: October 1, 2001

Effective: December 1, 2001

By JAN NEWTON, President-Missouri  
Southwestern Bell Telephone Company  
St. Louis, Missouri

Missouri Public  
FILED DEC 01 2001

Service Commission

No supplement to this tariff will be issued except for the purpose of canceling this tariff.

MISSOURI PORTION-ATCHISON, KANSAS, EXCHANGE  
 26th Revised Sheet 1  
 Replacing 25th Revised Sheet 1

SOUTHWESTERN BELL TELEPHONE COMPANY  
 LOCAL EXCHANGE TARIFF

Missouri Public Service Commission

REC'D OCT 02 2000

I. GENERAL

This Tariff is governed, except as otherwise specified herein, by all other Tariffs of the Southwestern Bell Telephone Company on file in the State of Missouri, which are hereby made a part of this Tariff. Unless otherwise specified, the charges quoted in this Tariff or in any other Missouri Tariff are for periods of one month, are payable monthly in advance and entitle the customer to exchange telephone service within the Atchison Exchange Area. This Exchange Area includes, in addition to the Missouri Portion, certain territory in the State of Kansas comprising the City of Atchison and vicinity, as shown on the Exchange Area Map for this exchange.

II. RATES

A. The rates for main service do not include a Telephone Company-provided instrument, except for Semi-Public Service, which includes one station equipped with a coin-collecting device.

B. Within the Missouri portion of the exchange, rates will be frozen until March 1, 1995. Urban mileage charges as set forth in Paragraph C. and D. following, apply as applicable, in addition to exchange rates when service is provided outside the Base Rate Area. Exchange rates are as follows:

**CANCELLED**

Current rates (1)

		<u>Business</u>	<u>Residence</u>
1. Flat Rate Service			
One-Party		\$18.38(CR)	\$9.96(CR)
One-Party Multiline		20.60	N/A
PBX Trunk		29.20	14.70
2. Message Rate Service			
	<u>Rate</u>	<u>Local Message Allowance</u>	<u>Add'l. Local Allowance</u>
Business One-Party	\$13.38(CR)	85	\$.06

DEC 01 2001  
 27 MRS  
 Missouri Public Service Commission  
 MISSOURI

Missouri Public Service Commission

(RT)

(AT) (1) See Sheet 2 for maximum allowable rates.

FILED DEC 01 2000

Issued: October 2, 2000

Effective: December 1, 2000

By JAN NEWTON, President-Missouri  
 Southwestern Bell Telephone Company  
 St. Louis, Missouri

No supplement to this tariff will be issued except for the purpose of canceling this tariff.

MISSOURI PORTION-ATCHISON, KANSAS, EXCHANGE  
25th Revised Sheet 1  
Replacing 24th Revised Sheet 1

RECEIVED

SOUTHWESTERN BELL TELEPHONE COMPANY  
LOCAL EXCHANGE TARIFF

DEC 4 1992

MO. PUBLIC SERVICE COMM.

I. GENERAL

This Tariff is governed, except as otherwise specified herein, by all other Tariffs of the Southwestern Bell Telephone Company on file in the State of Missouri, which are hereby made a part of this Tariff. Unless otherwise specified, the charges quoted in this Tariff or in any other Missouri Tariff are for periods of one month, are payable monthly in advance and entitle the customer to exchange telephone service within the Atchison Exchange Area. This Exchange Area includes, in addition to the Missouri Portion, certain territory in the State of Kansas comprising the City of Atchison and vicinity, as shown on the Exchange Area Map for this exchange.

II. RATES

A. The rates for main service do not include a Telephone Company-provided instrument, except for Semi-Public Service, which includes one station equipped with a coin-collecting device.

(CP) B. Within the Missouri portion of the exchange, rates will be frozen until March 1, 1995. Urban mileage charges as set forth in Paragraph C. and D. following, apply as applicable, in addition to exchange rates when service is provided outside the Base Rate Area. Exchange rates are as follows:

		<u>Business</u>	<u>Residence</u>
1. Flat Rate Service			
(RT) One-Party . . . . .		\$18.55 (DR)	\$10.05 (DR)
(RT) Semi-Public . . . . .		7.98 (DR)	N/A (DR)
One-Party Multiline . . . . .		20.60	N/A
PBX Trunk . . . . .		29.20	14.70

2. Message Rate Service	<u>Rate</u>	<u>Local Message Allowance</u>	<u>Add'l Local Message</u>
Business One-Party	\$13.50	85	\$ .06

CANCELLED

(RT) (DR) (DR) (DR) (DR)

DEC 01 2000

By *26th RSI*  
Public Service Commission (DR) (DR) (DR) (DR)  
MISSOURI

Issued: DEC 07 1992

Effective: ~~JAN 01 1993~~ JAN 21 1993 FILED

By A. D. ROBERTSON, Assistant Vice President-External Affairs. JAN 21 1993  
Southwestern Bell Telephone Company  
St. Louis, Missouri

MO. PUBLIC SERVICE COMM.

**P.S.C. Mo. - No. 17**  
**LOCAL EXCHANGE - MISSOURI PORTION TARIFF**

Southwestern Bell Telephone  
Company d/b/a AT&T Missouri

Section 1  
12th Revised Sheet 1.1  
Replacing 11th Revised Sheet 1.1

---

**MISSOURI PORTION - ATCHISON, KANSAS EXCHANGE**

**2. RATES (cont'd)**

- C. The following urban mileage charge applies to those customers provided exchange service located outside the base rate area:

	<u>Current Rates(1)(2)</u>		
	<u>USOC</u>	<u>Monthly Rate</u>	
Urban Mileage Charge, per line	1LS1H	\$1.94	(CR)

- D. The following urban mileage charge applies to former two-party customers who were located two miles beyond the Suburban Service Area boundary prior to the conversion of the exchange to one-party service. The charge applies to "existing installations, at existing locations, for existing customer".

	<u>USOC</u>	<u>Monthly Rate</u>
Urban Mileage Charge, per line	XUDV3	\$3.26

- (1) For the period of November 26, 2008 through November 25, 2012, prices for residence basic local service in this exchange will be governed by Section 392.245.5(7) RSMo.  
(2) For the period of November 26, 2008 through November 25, 2012, prices for business basic local service in this exchange will be governed by Section 392.245.5(7) RSMo.

---

Issued: August 2, 2013

Effective: August 3, 2013

**CANCELLED**  
May 1, 2014  
Missouri Public  
Service Commission  
JI-2014-0379

By JOHN SONDAG, President - Missouri  
St. Louis, Missouri

**FILED**  
Missouri Public  
Service Commission  
JI-2014-0053

P.S.C. Mo. - No. 17  
LOCAL EXCHANGE - MISSOURI PORTION TARIFF

Southwestern Bell Telephone  
Company d/b/a AT&T Missouri

Section 1  
11th Revised Sheet 1.1  
Replacing 10th Revised Sheet 1.1

---

10th Revised Sheet 1.1 was previously 10th Revised Sheet 1.01 (AT)

**MISSOURI PORTION - ATCHISON, KANSAS EXCHANGE** (AT)

**2. RATES (cont'd)**

- C. The following urban mileage charge applies to those customers provided exchange service located outside the base rate area:

	Current Rates(1)(2)		(AT)
	<u>USOC</u>	<u>Monthly Rate</u>	
Urban Mileage Charge, per line	1LS1H	\$4.36	

- D. The following urban mileage charge applies to former two-party customers who were located two miles beyond the Suburban Service Area boundary prior to the conversion of the exchange to one-party service. The charge applies to "existing installations, at existing locations, for existing customer".

	<u>USOC</u>	<u>Monthly Rate</u>
Urban Mileage Charge, per line	XUDV3	\$3.26

- (1) For the period of November 26, 2008 through November 25, 2012, prices for residence basic local service in this exchange will be governed by Section 392.245.5(7) RSMo. (CT)  
(AT)
- (2) For the period of November 26, 2008 through November 25, 2012, prices for business basic local service in this exchange will be governed by Section 392.245.5(7) RSMo. (AT)  
(AT)

---

Issued: July 2, 2009

Effective: July 12, 2009

**CANCELED**  
August 3, 2013  
Missouri Public  
Service Commission  
JI-2014-0053

By DAVID NICHOLS, President - Missouri  
St. Louis, Missouri

Filed  
Missouri Public  
Service Commission  
JI-2010-0004



No Supplement to this  
tariff will be issued  
except for the purpose  
of canceling this tariff.

(RT)

LOCAL EXCHANGE TARIFF

II. RATES (cont'd)

- C. The following urban mileage charge applies to those customers provided exchange service located outside the base rate area:

	Current Rates(1)	
	<u>USOC</u>	<u>Monthly Rate</u>
Urban Mileage Charge, per line	1LS1H	\$4.36(CR)

- D. The following urban mileage charge applies to former two-party customers who were located two miles beyond the Suburban Service Area boundary prior to the conversion of the exchange to one-party service. The charge applies to “existing installations, at existing locations, for existing customer”.

	<u>USOC</u>	<u>Monthly Rate</u>
Urban Mileage Charge, per line	XUDV3	\$3.26(CR)

(1) See Sheet 2 for maximum allowable rates.

Issued: October 17, 2005

Effective: December 1, 2005

By CINDY BRINKLEY, President-Missouri  
Southwestern Bell Telephone, L.P., d/b/a Southwestern Bell Telephone Company  
St. Louis, Missouri

No Supplement to this tariff will be issued except for the purpose of canceling this tariff.

Missouri Portion-  
Atchison, Kansas, Exchange  
9th Revised Sheet 1.01  
Replacing 8th Revised Sheet 1.01

SOUTHWESTERN BELL TELEPHONE COMPANY  
LOCAL EXCHANGE TARIFF

II. RATES (cont'd)

- C. The following urban mileage charge applies to those customers provided exchange service located outside the base rate area:

	Current Rates(1)	
	<u>USOC</u>	<u>Monthly Rate</u>
Urban Mileage Charge, per line	1LS1H	\$4.45(CR)

- D. The following urban mileage charge applies to former two-party customers who were located two miles beyond the Suburban Service Area boundary prior to the conversion of the exchange to one-party service. The charge applies to "existing installations, at existing locations, for existing customer".

	<u>USOC</u>	<u>Monthly Rate</u>
Urban Mileage Charge, per line	XUDV3	\$3.33(CR)

**CANCELLED**

DEC 01 2005  
By 1047 RS 1.01  
Public Service Commission  
MISSOURI

(1) See Sheet 2 for maximum allowable rates.

Issued: October 15, 2004

Effective: December 1, 2004

By CINDY BRINKLEY, President-Missouri  
Southwestern Bell Telephone, L.P., d/b/a Southwestern Bell Telephone Company  
St. Louis, Missouri

**FILED  
MO PSC**

No Supplement to this tariff will be issued except for the purpose of canceling this tariff.

Missouri Portion-  
Atchison, Kansas, Exchange  
8th Revised Sheet 1.01  
Replacing 7th Revised Sheet 1.01

SOUTHWESTERN BELL TELEPHONE COMPANY  
LOCAL EXCHANGE TARIFF

Missouri Public  
Service Commission

II. RATES (cont'd)

REC'D OCT 15 2002

- C. The following urban mileage charge applies to those customers provided exchange service located outside the base rate area:

	Current Rates(1)	
	<u>USOC</u>	<u>Monthly Rate</u>
Urban Mileage Charge, per line	1LS1H	\$4.57(CR)

- D. The following urban mileage charge applies to former two-party customers who were located two miles beyond the Suburban Service Area boundary prior to the conversion of the exchange to one-party service. The charge applies to "existing installations, at existing locations, for existing customer".

	<u>USOC</u>	<u>Monthly Rate</u>
Urban Mileage Charge, per line	XUDV3	\$3.42(CR)

**CANCELLED**

DEC 01 2004  
944RS 1.01  
Public Service Commission  
MISSOURI

Missouri Public  
Service Commission

(1) See Sheet 2 for maximum allowable rates.

FILED DEC 01 2002

Issued: October 15, 2002

Effective: December 1, 2002

By CINDY BRINKLEY, President-Missouri  
Southwestern Bell Telephone, L.P., d/b/a Southwestern Bell Telephone Company  
St. Louis, Missouri

No supplement to this tariff will be issued except for the purpose of canceling this tariff.

MISSOURI PORTION-ATCHISON, KANSAS, EXCHANGE  
7th Revised Sheet 1.01  
Replacing 6th Revised Sheet 1.01

Missouri Public

SOUTHWESTERN BELL TELEPHONE COMPANY  
LOCAL EXCHANGE TARIFF

REC'D OCT 01 2001

II. RATES-(Continued)

Service Commission

C. The following urban mileage charge applies to those customers provided exchange service located outside the base rate area:

	<u>Current rates (1)</u>	
	<u>USOC</u>	<u>Monthly Rate</u>
Urban Mileage Charge, per line	ILSIH	\$4.53(CR)

D. The following urban mileage charge applies to former two-party customers who were located two miles beyond the Suburban Service Area boundary prior to the conversion of the exchange to one-party service. The charge applies to "existing installations, at existing locations, for existing customer":

	<u>USOC</u>	<u>Monthly Rate</u>
Urban Mileage Charge, per line	XUDV3	\$3.39(CR)

**CANCELLED**

DEC 01 2002

*SubRS 1.01*

Public Service Commission  
MISSOURI

(1) See Sheet 2 for maximum allowable rates.

Issued: October 1, 2001

Effective: December 1, 2001

By JAN NEWTON, President-Missouri  
Southwestern Bell Telephone Company  
St. Louis, Missouri

Missouri Public

FILED DEC 01 2001

Service Commission

No supplement to this tariff will be issued except for the purpose of canceling this tariff.

MISSOURI PORTION-ATCHISON, KANSAS, EXCHANGE  
6th Revised Sheet 1.01  
Replacing 5th Revised Sheet 1.01

SOUTHWESTERN BELL TELEPHONE COMPANY  
LOCAL EXCHANGE TARIFF

Missouri Public  
Service Commission

II. RATES-(Continued)

REC'D OCT 02 2000

C. The following urban mileage charge applies to those customers provided exchange service located outside the base rate area:

(AT)

	<u>CURRENT RATES (1)</u>	
	<u>USOC</u>	<u>Monthly Rate</u>
Urban Mileage Charge, per line	ILSIH	\$4.56(CR)

D. The following urban mileage charge applies to former two-party customers who were located two miles beyond the Suburban Service Area boundary prior to the conversion of the exchange to one-party service. The charge applies to "existing installations, at existing locations, for existing customer":

	<u>USOC</u>	<u>Monthly Rate</u>
Urban Mileage Charge, per line	XUDV3	\$3.42(CR)

CANCELLED

DEC 01 2001  
74hrs 1.01  
Public Service Commission  
MISSOURI

Missouri Public  
Service Commission

FILED DEC 01 2000

(AT)

(1) See Sheet 2 for maximum allowable rates.

Issued: October 2, 2000

Effective: December 1, 2000

By JAN NEWTON, President-Missouri  
Southwestern Bell Telephone Company  
St. Louis, Missouri

No supplement to this tariff will be issued except for the purpose of canceling this tariff.

MISSOURI PORTION-ATCHISON, KANSAS, EXCHANGE  
5th Revised Sheet 1.01  
Replacing 4th Revised Sheet 1.01

SOUTHWESTERN BELL TELEPHONE COMPANY  
LOCAL EXCHANGE TARIFF

RECEIVED  
DEC 4 1992

II. RATES--(Continued)

(RT) Footnotes:--(Continued)

MO. PUBLIC SERVICE COMM.

(RT)

(AT) C. The following urban mileage charge applies to those customers provided exchange service located outside the base rate area:

	<u>USOC</u>		<u>Monthly Rate</u>
Urban Mileage Charge, per line	1LS1H	(NR)	\$4.60

D. The following urban mileage charge applies to former two-party customers who were located two miles beyond the Suburban Service Area boundary prior to the conversion of the exchange to one-party service. The charge applies to "existing installations, at existing locations, for existing customers":

	<u>USOC</u>		<u>Monthly Rate</u>
(AT) Urban Mileage Charge, per line	XUDV3	(NR)	\$3.45

CANCELLED

FILED

DEC 01 2000  
By *RS181*  
Public Service Commission  
MISSOURI

JAN 21 1993  
MO. PUBLIC SERVICE COMM.

JAN 21 1993

Issued: DEC 07 1992

Effective: ~~JAN 07 1993~~  
JAN 12 1993

By A. D. ROBERTSON, Assistant Vice President-External Affairs  
Southwestern Bell Telephone Company  
St. Louis, Missouri

P.S.C. Mo. - No. 17  
LOCAL EXCHANGE - MISSOURI PORTION TARIFF

Southwestern Bell Telephone  
Company d/b/a AT&T Missouri

Section 1  
10th Revised Sheet 2  
Replacing 9th Revised Sheet 2

---

(RT)

(RT)

---

Issued: July 2, 2009

By DAVID NICHOLS, President - Missouri  
St. Louis, Missouri

Effective: July 12, 2009

CANCELLED  
May 1, 2014  
Missouri Public  
Service Commission  
JI-2014-0379

Filed  
Missouri Public  
Service Commission  
JI-2010-0004

**P.S.C. Mo. - No. 17  
Missouri Portion-**

Southwestern Bell Telephone  
Company d/b/a AT&T Missouri

Atchison, Kansas Exchange  
9th Revised Sheet 2  
Replacing 8th Revised Sheet 2

**LOCAL EXCHANGE TARIFF**

**II. RATES (cont'd)**

		Maximum Rates	
		Business	Residence
1.	Flat Rate Service		
	One-Party Lifeline	\$17.95(CR) N/A	\$9.72(CR) (1)
		USOC	Monthly Rate
	Urban Mileage Charge, per line	1LS1H	\$4.46(CR)
		USOC	Monthly Rate
	Urban Mileage Charge, per line	XUDV3	\$3.33(CR)
2.	Message Rate Service	Local Message Allowance	Additional Local Allowance
	Business One-Party	Rate \$12.78	85 \$.06

(1) A customer eligible under established criteria can receive a discount from his or her bill for residential essential local telecommunications services, in accordance with P.S.C. Mo. – No. 24, Local Exchange Tariff, Section 1.2.2.E, regarding Lifeline Service.

Issued: December 31, 2007

Effective: February 16, 2008

By CINDY BRINKLEY, President – Missouri  
St. Louis, Missouri

Cancelled  
July 12, 2009  
Missouri Public  
Service Commission  
JI-2010-0004

FILED  
Missouri Public  
Service Commission



**P.S.C. Mo. - No. 17  
Missouri Portion-**

Southwestern Bell Telephone, L.P.  
d/b/a AT&T Missouri

Atchison, Kansas Exchange  
8th Revised Sheet 2  
Replacing 7th Revised Sheet 2

**LOCAL EXCHANGE TARIFF**

**II. RATES (cont'd)**

		<u>Maximum Rates</u>	
		<u>Business</u>	<u>Residence</u>
1.	Flat Rate Service		
	One-Party Lifeline	\$17.60(CR) N/A	\$9.53(CR) (1)
		<u>USOC</u>	<u>Monthly Rate</u>
	Urban Mileage Charge, per line	1LS1H	\$4.36
		<u>USOC</u>	<u>Monthly Rate</u>
	Urban Mileage Charge, per line	XUDV3	\$3.26
2.	Message Rate Service	<u>Local Message Allowance</u>	<u>Additional Local Allowance</u>
	Business One-Party	85	\$.06
		<u>Rate</u>	
	Business One-Party	\$12.78	

(1) A customer eligible under established criteria can receive a discount from his or her bill for residential essential local telecommunications services, in accordance with P.S.C. Mo. – No. 24, Local Exchange Tariff, Section 1.2.2.E, regarding Lifeline Service.

Issued: October 17, 2006

Effective: December 1, 2006

By CINDY BRINKLEY, President – Missouri  
St. Louis, Missouri

CANCELLED  
February 16, 2008  
Missouri Public  
Service Commission

**Filed**  
Missouri Public  
Service Commission

No Supplement to this tariff will be issued except for the purpose of canceling this tariff.

Missouri Portion-  
Atchison, Kansas Exchange  
7th Revised Sheet 2  
Replacing 6th Revised Sheet 2

LOCAL EXCHANGE TARIFF

II. RATES (cont'd)

		<u>Maximum Rates</u>	
		<u>Business</u>	<u>Residence</u>
1.	Flat Rate Service		
	One-Party	\$17.56(CR)	\$9.51(CR)
	Lifeline	N/A	(1)
		<u>USOC</u>	<u>Monthly Rate</u>
	Urban Mileage Charge, per line	1LS1H	\$4.36(CR)
		<u>USOC</u>	<u>Monthly Rate</u>
	Urban Mileage Charge, per line	XUDV3	\$3.26(CR)
2.	Message Rate Service	<u>Rate</u>	<u>Local Message Allowance</u>
	Business One-Party	\$12.78(CR)	85
			<u>Additional Local Allowance</u>
			\$0.06

(1) A customer eligible under established criteria can receive a discount from his or her bill for residential essential local telecommunications services, in accordance with P.S.C. Mo. – No. 24, Local Exchange Tariff, Section 1.2.2.E, regarding Lifeline Service.

Issued: October 17, 2005

Effective: December 1, 2005

By CINDY BRINKLEY, President-SBC Missouri  
Southwestern Bell Telephone, L.P., d/b/a SBC Missouri  
St. Louis, Missouri

**Cancelled**

December 1, 2006

Missouri Public  
Service Commission

**Filed**

Missouri Public  
Service Commission

No Supplement to this tariff will be issued except for the purpose of canceling this tariff.

Missouri Portion-  
Atchison, Kansas Exchange  
6th Revised Sheet 2  
Replacing 5th Revised Sheet 2

(RT)

LOCAL EXCHANGE TARIFF

II. RATES (cont'd)

		<u>Maximum Rates</u>	
		<u>Business</u>	<u>Residence</u>
(CT)(CR)	1. Flat Rate Service		
	One-Party Lifeline	\$17.91 N/A	\$9.70 (1)
		<u>USOC</u>	<u>Monthly Rate</u>
	Urban Mileage Charge, per line	1LS1H	\$4.45
		<u>USOC</u>	<u>Monthly Rate</u>
	Urban Mileage Charge, per line	XUDV3	\$3.33
	2. Message Rate Service	<u>Rate</u>	<u>Local Message Allowance</u> <u>Additional Local Allowance</u>
	Business One-Party	\$13.03	85      \$ .06

**CANCELLED**

DEC 01 2005

By *JRS 2*  
Public Service Commission  
MISSOURI

- (AT) (1) A customer eligible under established criteria can receive a discount from his or her bill for residential essential local telecommunications services, in accordance with P.S.C. Mo. – No. 24, Local Exchange Tariff, Section 1.2.2.E, regarding Lifeline Service.

Issued: April 1, 2005

Effective: May 1, 2005

By CINDY BRINKLEY, President-SBC Missouri  
Southwestern Bell Telephone, L.P., d/b/a SBC Missouri  
St. Louis, Missouri

TO-1998-0329

**FILED  
MO PSC**

No Supplement to this tariff will be issued except for the purpose of canceling this tariff.

Missouri Portion-  
Atchison, Kansas, Exchange  
5th Revised Sheet 2  
Replacing 4th Revised Sheet 2

SOUTHWESTERN BELL TELEPHONE COMPANY  
LOCAL EXCHANGE TARIFF

II. RATES (cont'd)

		<u>Maximum Rates</u>	
		<u>Business</u>	<u>Residence</u>
1.	Flat Rate Service		
	One-Party Lifeline(1)	\$17.91(CR) N/A	\$9.70(CR) 6.20(CR)
		<u>USOC</u>	<u>Monthly Rate</u>
	Urban Mileage Charge, per line	1LS1H	\$4.45(CR)
		<u>USOC</u>	<u>Monthly Rate</u>
	Urban Mileage Charge, per line	XUDV3	\$3.33(CR)
2.	Message Rate Service	<u>Rate</u>	<u>Local Message Allowance</u>
	Business One-Party	\$13.03(CR)	85
			<u>Additional Local Allowance</u>
			\$.06

**CANCELLED**

MAY 01 2005  
by *WARS 2*  
Public Service Commission  
MISSOURI

(1) See P.S.C. Mo. – No. 24, Local Exchange Tariff, Section 1.2.2.E, for description, terms and conditions related to Lifeline Service.

Issued: October 15, 2004

Effective: December 1, 2004

By CINDY BRINKLEY, President-SBC Missouri  
Southwestern Bell Telephone, L.P., d/b/a SBC Missouri  
St. Louis, Missouri

**FILED  
MO PSC**

(C) No Supplement to this tariff will be issued except for the purpose of canceling this tariff.

Missouri Portion-  
Atchison, Kansas, Exchange  
4th Revised Sheet 2  
Replacing 3rd Revised Sheet 2  
Missouri Public

SOUTHWESTERN BELL TELEPHONE COMPANY Service Commission  
LOCAL EXCHANGE TARIFF

REC'D MAY 10 2004

II. RATES (cont'd)

		Maximum Rates	
		<u>Business</u>	<u>Residence</u>
(AT)	1. Flat Rate Service		
	One-Party Lifeline(1)	\$18.40 N/A	\$9.97 6.47(NR)
		<u>USOC</u>	<u>Monthly Rate</u>
	Urban Mileage Charge, per line	1LS1H	\$4.57
		<u>USOC</u>	<u>Monthly Rate</u>
	Urban Mileage Charge, per line	XUDV3	\$3.42
		<u>Local Message Allowance</u>	<u>Additional Local Allowance</u>
	2. Message Rate Service		
	Business One-Party	\$13.39	85 \$0.06

**CANCELLED**

DEC 01 2004  
by SMRS2  
Public Service Commission  
MISSOURI

(AT) (1) See P.S.C. Mo. - No. 24, Local Exchange Tariff, Section 1.2.2.E, for description, terms and conditions related to Lifeline Service.

Issued: May 10, 2004

Effective: June 9, 2004

By CINDY BRINKLEY, President-SBC Missouri  
Southwestern Bell Telephone, L.P., d/b/a SBC Missouri  
St. Louis, Missouri

Missouri Public  
Service Commission

FILED JUN 09 2004

No Supplement to this tariff will be issued except for the purpose of canceling this tariff.

Missouri Portion-  
Atchinson, Kansas, Exchange  
3rd Revised Sheet 2  
Replacing 2nd Revised Sheet 2

SOUTHWESTERN BELL TELEPHONE COMPANY  
LOCAL EXCHANGE TARIFF

Missouri Public

II. RATES (cont'd)

REC'D OCT 15 2003  
Maximum Rates

	<u>Business</u>	<u>Residence</u>	
1. Flat Rate Service			<b>Service Commission</b>
One-Party	\$18.40(CR)	\$9.97	
	<u>USOC</u>	<u>Monthly Rate</u>	
Urban Mileage Charge, per line	1LSIH	\$4.57	
	<u>USOC</u>	<u>Monthly Rate</u>	
Urban Mileage Charge, per line	XUDV3	\$3.42	
2. Message Rate Service	<u>Rate</u>	<u>Local Message Allowance</u>	<u>Additional Local Allowance</u>
Business One-Party	\$13.39(CR)	85	\$0.06

**CANCELLED**  
JUN 09 2004  
by *YHRS 2*  
Public Service Commission  
MISSOURI

Issued: October 15, 2003

Effective: December 1, 2003

By CINDY BRINKLEY, President-SBC Missouri  
Southwestern Bell Telephone, L.P., d/b/a SBC Missouri  
St. Louis, Missouri

Missouri Public  
Service Commission

FILED DEC 01 2003

No Supplement to this tariff will be issued except for the purpose of canceling this tariff.

Missouri Portion-  
Atchison, Kansas, Exchange  
2nd Revised Sheet 2  
Replacing 1st Revised Sheet 2

SOUTHWESTERN BELL TELEPHONE COMPANY  
LOCAL EXCHANGE TARIFF

Missouri Public  
Service Commission

II. RATES

REC'D OCT 15 2002

	Maximum Rates		
	<u>Business</u>	<u>Residence</u>	
1. Flat Rate Service			
One-Party	\$18.41(CR)	\$9.97(CR)	
	<u>USOC</u>	<u>Monthly Rate</u>	
Urban Mileage Charge, per line	1LS1H	\$4.57(CR)	
	<u>USOC</u>	<u>Monthly Rate</u>	
Urban Mileage Charge, per line	XUDV3	\$3.42(CR)	
2. Message Rate Service	<u>Rate</u>	<u>Local Message Allowance</u>	<u>Add'l Local Allowance</u>
Business One-Party	\$13.40(CR)	85	\$ .06

CANCELLED  
DEC 01 2003  
3rd RSZ  
Missouri Public Service Commission  
MISSOURI

Missouri Public  
Service Commission

FILED DEC 01 2002

Issued: October 15, 2002

Effective: December 1, 2002

By CINDY BRINKLEY, President-Missouri  
Southwestern Bell Telephone, L.P., d/b/a Southwestern Bell Telephone Company  
St. Louis, Missouri

No supplement to this tariff will be issued except for the purpose of canceling this tariff.

MISSOURI PORTION-ATCHISON, KANSAS, EXCHANGE  
 1<sup>st</sup> Revised Sheet 2  
 Replacing Original Sheet 2

**Missouri Public**

SOUTHWESTERN BELL TELEPHONE COMPANY  
 LOCAL EXCHANGE TARIFF

REC'D OCT 01 2001

**Service Commission**

MAXIMUM Rates

1. Flat Rate Service		<u>Business</u>	<u>Residence</u>
One-Party		\$18.24 (CR)	\$9.89 (CR)
Urban Mileage Charge, per line		<u>USOC</u> ILSIH	<u>Monthly Rate</u> \$4.53 (CR)
Urban Mileage Charge, per line		<u>USOC</u> XUDV3	<u>Monthly Rate</u> \$3.39 (CR)
2. Message Rate Service		<u>Local Message Allowance</u>	<u>Add'l. Local Allowance</u>
Business One-Party	<u>Rate</u>	85	\$0.06
	\$13.28 (CR)		

**CANCELLED**

DEC 01 2002

2nd RSZ  
 Public Service Commission  
 MISSOURI

Issued: October 1, 2001

Effective: December 1, 2001

By JAN NEWTON, President-Missouri  
 Southwestern Bell Telephone Company  
 St. Louis, Missouri

**Missouri Public**

FILED DEC 01 2001

**Service Commission**



No supplement to this tariff will be issued except for the purpose of canceling this tariff.

MISSOURI PORTION-ATCHISON, KANSAS, EXCHANGE  
Original Sheet 2

Missouri Public Service Commission

SOUTHWESTERN BELL TELEPHONE COMPANY LOCAL EXCHANGE TARIFF  
REC'D OCT 02 2000

MAXIMUM rates

1. Flat Rate Service		<u>Business</u>	<u>Residence</u>
One-Party		\$18.38	\$9.96
		<u>USOC</u>	<u>Monthly Rate</u>
Urban Mileage Charge, per line		ILS1H	\$4.56
		<u>USOC</u>	<u>Monthly Rate</u>
Urban Mileage Charge, per line		XUDV3	\$3.42
2. Message Rate Service		<u>Local Message Allowance</u>	<u>Add'l. Local Allowance</u>
Business One-Party	<u>Rate</u>	85	\$0.06
	\$13.38		

**CANCELLED**  
DEC 01 2001  
by ISTRS2  
Public Service Commission  
MISSOURI

Missouri Public Service Commission

FILED DEC 01 2000

Issued: October 2, 2000

Effective: December 1, 2000

By JAN NEWTON, President-Missouri  
Southwestern Bell Telephone Company  
St. Louis, Missouri