

NO SUPPLEMENT TO THIS TARIFF WILL BE ISSUED EXCEPT FOR THE PURPOSE OF CANCELING THIS TARIFF.

P. S. C. Mo. No. 17

EXCHANGE AREA MAP

REPLACING 7th REVISED SHEET 3
6th REVISED SHEET 3

MAY 20 1977

MISSOURI
Public Service Commission



T44N
T43N

T43N
T42N

T42N
T41N

R4W | R3W

R3W | R2W

DEC 1 1977 R2W | R1W

By R. R. SHOCKLEY, Vice President, Missouri
Southwestern Bell Telephone Company

May 23 1977

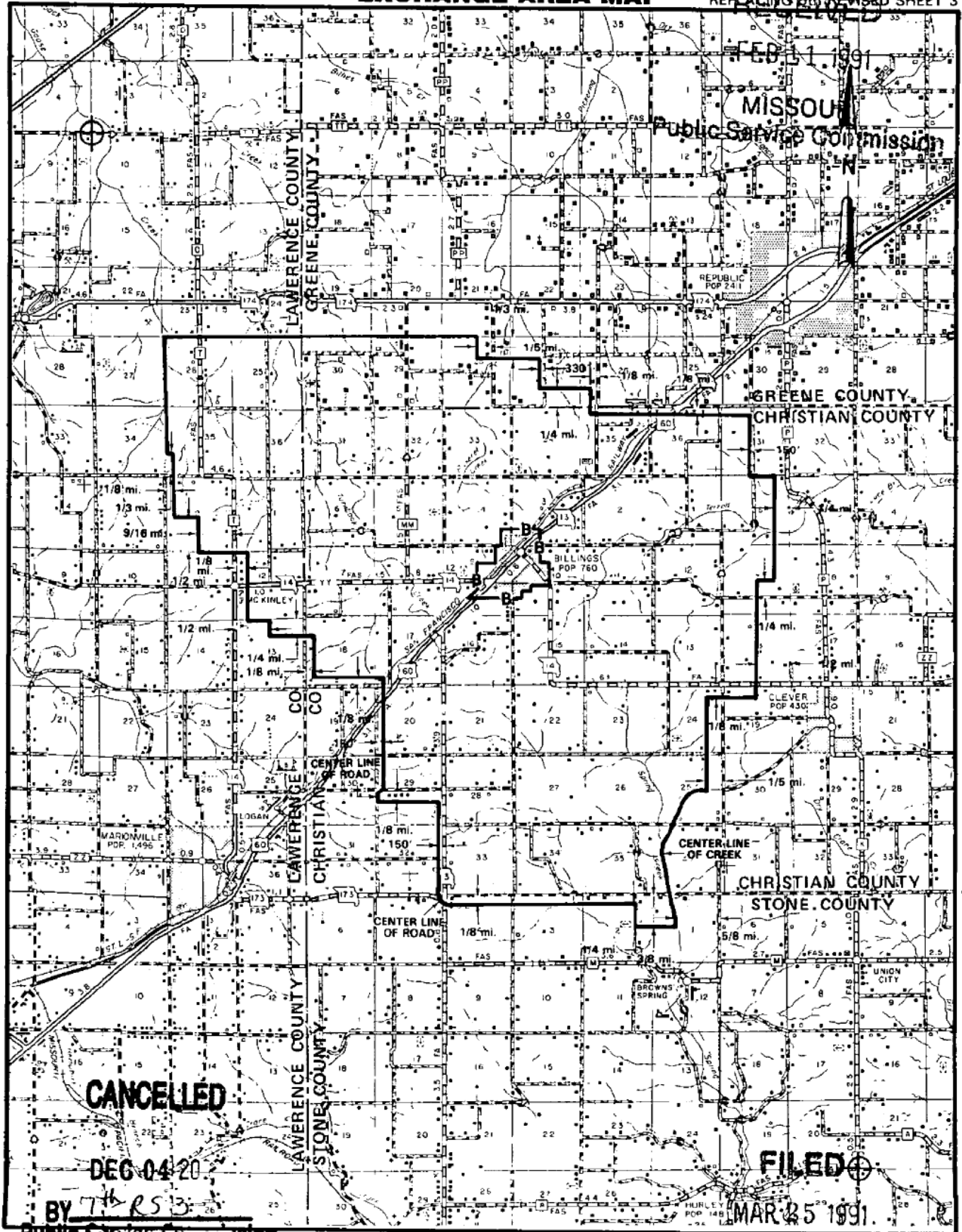
Public Service Commission DEC 1 1977

NO SUPPLEMENT TO THIS TARIFF WILL BE ISSUED EXCEPT FOR THE PURPOSE OF CANCELING THIS TARIFF.

P. S. C. Mo. No. 17 EXCHANGE AREA MAP

6th REVISED SHEET 3
REPLACING 5th REVISED SHEET 3

Billings, Missouri



T29N
T28N

T28N
T27N

T27N
T26N

CANCELLED
 DEC 04 20
 BY 7th RS 3
 Public Service Commission
 MISSOURI

FILED
 MAR 25 1991
 Public Service Commission

By R. D. BARRON, PRESIDENT, MISSOURI DIVISION
 Southwestern Bell Telephone Company
 St. Louis, Missouri

Issued: February 19, 1991

Effective: March 25, 1991

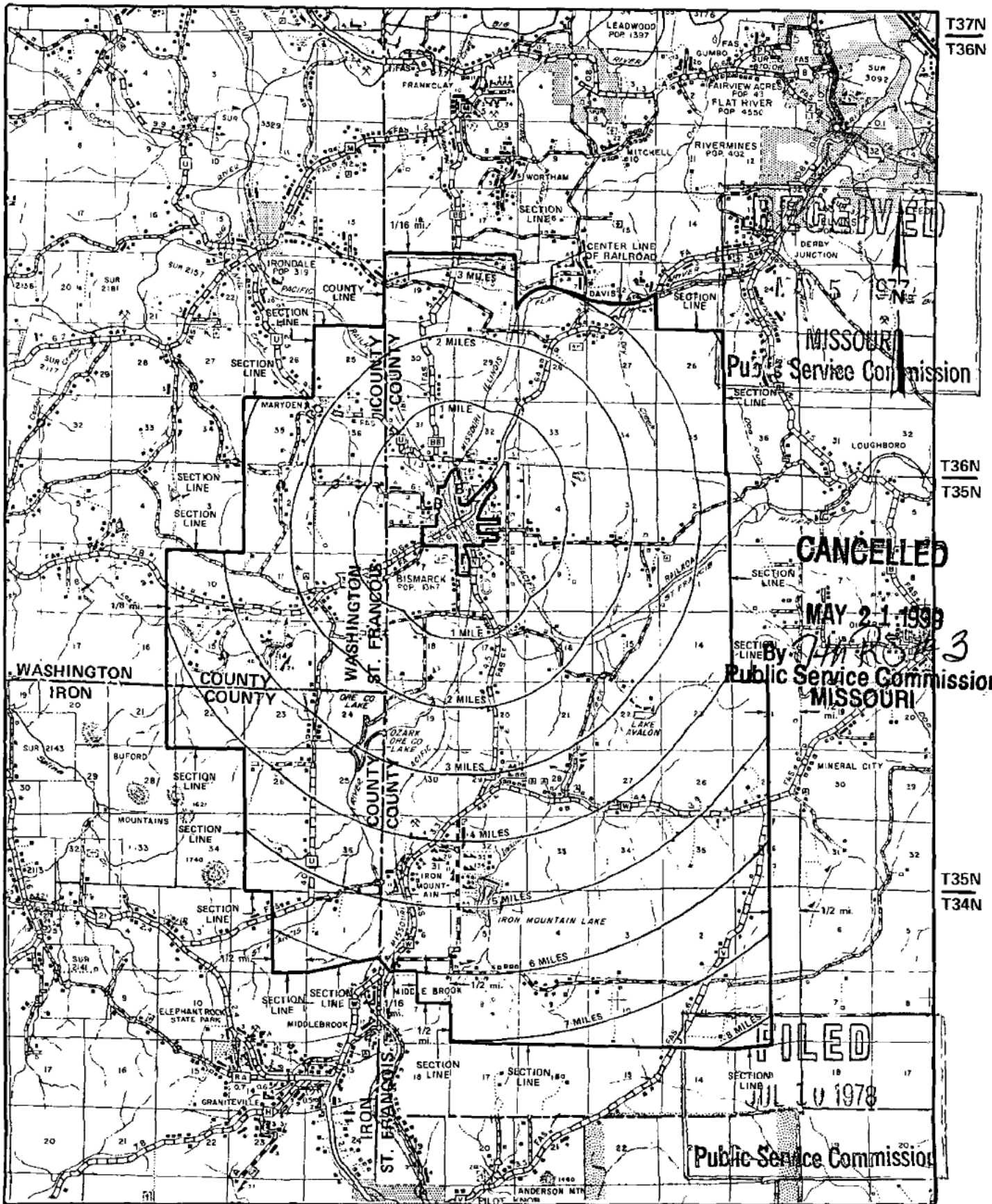
NO SUPPLEMENT TO THIS TARIFF WILL BE ISSUED EXCEPT FOR THE PURPOSE OF CANCELING THIS TARIFF.

P. S. C. Mo. No. 17

Bismarck, Missouri

6th REVISED SHEET 3
REPLACING 5th REVISED SHEET 3

EXCHANGE AREA MAP



R3E | R4E

R4E | R5E

By R. R. SHOCKLEY, Vice President, Missouri
Southwestern Bell Telephone Company
St. Louis, Missouri

Issued: May 10, 1977

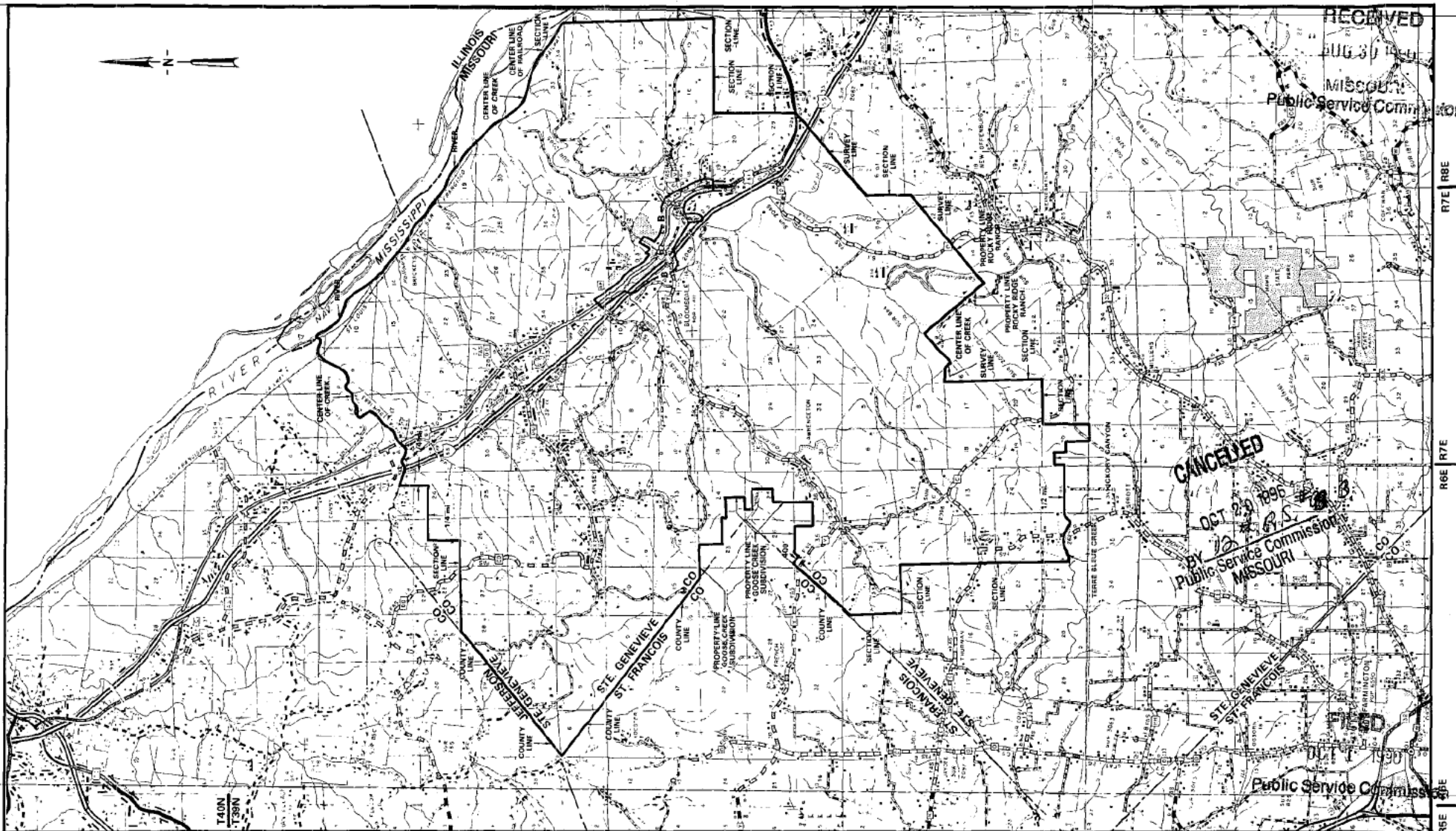
Effective: JUL 10 1978

NO SUPPLEMENT TO THIS TARIFF WILL BE ISSUED EXCEPT FOR THE PURPOSE OF CANCELING THIS TARIFF.

P. S. C. Mo. No. 17 EXCHANGE AREA MAP

Bloomdsale, Missouri

11th REVISED SHEET 3
REPLACING 10th REVISED SHEET 3



RECEIVED
AUG 30 1990

Missouri
Public Service Commission

CANCELED
OCT 29 1995
By *[Signature]*
Public Service Commission
MISSOURI

FILED
OCT 1 1990
Public Service Commission

By R. D. BARRON, PRESIDENT, MISSOURI DIVISION
Southwestern Bell Telephone Company
St. Louis, Missouri

Issued: August 30, 1990

Effective: October 1, 1990

P.S.C. Mo. - No. 17
LOCAL EXCHANGE - MISSOURI PORTION TARIFF

Southwestern Bell Telephone
Company d/b/a AT&T Missouri

Section 2
32nd Revised Sheet 1
Replacing 31st Revised Sheet 1

MISSOURI PORTION - BLYTHEVILLE, ARKANSAS EXCHANGE

1. GENERAL

This Tariff is governed, except as otherwise specified herein, by all other Tariffs of the Southwestern Bell Telephone Company on file in the State of Missouri, which are hereby made a part of this Tariff. Unless otherwise specified, the charges quoted in this Tariff or in any other Missouri Tariff are for periods of one month, are payable monthly in advance and entitle the customer to exchange telephone service within the Blytheville Exchange Area and Extended Area Service to the Dell, Arkansas, Exchange.

This exchange area includes, in addition in the Missouri portion, certain territory in the State of Arkansas comprising the City of Blytheville and vicinity, as shown on the exchange area map for this exchange.

2. RATES

The rates for main and extension service do not include a Telephone Company-provided instrument, except for Semi-Public Service, which includes one station equipped with a coin-collecting device.

2.1 Within the Base Rate Area, As shown on The Related Exchange Area Map:

<u>Class of Service</u>	<u>Current Monthly Rates(1)(2)</u>	
Urban Service		
Business		
Flat Rate -		
One-Party Line	\$75.50	(CR)
Multiline	75.50	(CR)
PBX Trunk	43.00	

(1) For the period of November 26, 2008 through November 25, 2012, prices for residence basic local service in this exchange will be governed by Section 392.245.5(7) RSMo.

(2) For the period of November 26, 2008 through November 25, 2012, prices for business basic local service in this exchange will be governed by Section 392.245.5(7) RSMo.

P.S.C. Mo. - No. 17
LOCAL EXCHANGE - MISSOURI PORTION TARIFF

Southwestern Bell Telephone
Company d/b/a AT&T Missouri

Section 2
31st Revised Sheet 1
Replacing 30th Revised Sheet 1

MISSOURI PORTION - BLYTHEVILLE, ARKANSAS EXCHANGE

1. GENERAL

This Tariff is governed, except as otherwise specified herein, by all other Tariffs of the Southwestern Bell Telephone Company on file in the State of Missouri, which are hereby made a part of this Tariff. Unless otherwise specified, the charges quoted in this Tariff or in any other Missouri Tariff are for periods of one month, are payable monthly in advance and entitle the customer to exchange telephone service within the Blytheville Exchange Area and Extended Area Service to the Dell, Arkansas, Exchange.

This exchange area includes, in addition in the Missouri portion, certain territory in the State of Arkansas comprising the City of Blytheville and vicinity, as shown on the exchange area map for this exchange.

2. RATES

The rates for main and extension service do not include a Telephone Company-provided instrument, except for Semi-Public Service, which includes one station equipped with a coin-collecting device.

2.1 Within the Base Rate Area, As shown on The Related Exchange Area Map:

<u>Class of Service</u>	<u>Current Monthly Rates(1)(2)</u>	
Urban Service		
Business		
Flat Rate -		
One-Party Line	\$59.00	(CR)
Multiline	65.00	(CR)
PBX Trunk	43.00	

- (1) For the period of November 26, 2008 through November 25, 2012, prices for residence basic local service in this exchange will be governed by Section 392.245.5(7) RSMo.
(2) For the period of November 26, 2008 through November 25, 2012, prices for business basic local service in this exchange will be governed by Section 392.245.5(7) RSMo.

Issued: June 25, 2013

Effective: July 5, 2013

CANCELLED
December 1, 2013
Missouri Public
Service Commission
JI-2014-0226

By JOHN SONDRAG, President - Missouri
St. Louis, Missouri

FILED
Missouri Public
Service Commission
JI-2013-0608

P.S.C. Mo. - No. 17
LOCAL EXCHANGE - MISSOURI PORTION TARIFF

Southwestern Bell Telephone
Company d/b/a AT&T Missouri

Section 2
30th Revised Sheet 1
Replacing 29th Revised Sheet 1

MISSOURI PORTION - BLYTHEVILLE, ARKANSAS EXCHANGE

1. GENERAL

This Tariff is governed, except as otherwise specified herein, by all other Tariffs of the Southwestern Bell Telephone Company on file in the State of Missouri, which are hereby made a part of this Tariff. Unless otherwise specified, the charges quoted in this Tariff or in any other Missouri Tariff are for periods of one month, are payable monthly in advance and entitle the customer to exchange telephone service within the Blytheville Exchange Area and Extended Area Service to the Dell, Arkansas, Exchange.

This exchange area includes, in addition in the Missouri portion, certain territory in the State of Arkansas comprising the City of Blytheville and vicinity, as shown on the exchange area map for this exchange.

2. RATES

The rates for main and extension service do not include a Telephone Company-provided instrument, except for Semi-Public Service, which includes one station equipped with a coin-collecting device.

2.1 Within the Base Rate Area, As shown on The Related Exchange Area Map:

<u>Class of Service</u>	<u>Current Monthly Rates(1)(2)</u>	
Urban Service		
Business		
Flat Rate -		
One-Party Line	\$48.00	(CR)
Multiline	62.00	(CR)
PBX Trunk	43.00	

- (1) For the period of November 26, 2008 through November 25, 2012, prices for residence basic local service in this exchange will be governed by Section 392.245.5(7) RSMo.
(2) For the period of November 26, 2008 through November 25, 2012, prices for business basic local service in this exchange will be governed by Section 392.245.5(7) RSMo.

Issued: December 24, 2012

Effective: January 3, 2013

CANCELLED
July 5, 2013
Missouri Public
Service Commission
JI-2013-0608

By JOHN SONDAG, President - Missouri
St. Louis, Missouri

FILED
Missouri Public
Service Commission
JI-2013-0285

P.S.C. Mo. - No. 17
LOCAL EXCHANGE - MISSOURI PORTION TARIFF

Southwestern Bell Telephone
Company d/b/a AT&T Missouri

Section 2
29th Revised Sheet 1
Replacing 28th Revised Sheet 1

MISSOURI PORTION - BLYTHEVILLE, ARKANSAS EXCHANGE

1. GENERAL

This Tariff is governed, except as otherwise specified herein, by all other Tariffs of the Southwestern Bell Telephone Company on file in the State of Missouri, which are hereby made a part of this Tariff. Unless otherwise specified, the charges quoted in this Tariff or in any other Missouri Tariff are for periods of one month, are payable monthly in advance and entitle the customer to exchange telephone service within the Blytheville Exchange Area and Extended Area Service to the Dell, Arkansas, Exchange.

This exchange area includes, in addition in the Missouri portion, certain territory in the State of Arkansas comprising the City of Blytheville and vicinity, as shown on the exchange area map for this exchange.

2. RATES

The rates for main and extension service do not include a Telephone Company-provided instrument, except for Semi-Public Service, which includes one station equipped with a coin-collecting device.

2.1 Within the Base Rate Area, As shown on The Related Exchange Area Map:

<u>Class of Service</u>	<u>Current Monthly Rates(1)(2)</u>	
Urban Service		
Business		
Flat Rate -		
One-Party Line	\$39.00	(CR)
Multiline	54.50	(CR)
PBX Trunk	43.00	

- (1) For the period of November 26, 2008 through November 25, 2012, prices for residence basic local service in this exchange will be governed by Section 392.245.5(7) RSMo.
(2) For the period of November 26, 2008 through November 25, 2012, prices for business basic local service in this exchange will be governed by Section 392.245.5(7) RSMo.

Issued: June 25, 2012

By JOHN SONDRAG, President - Missouri
St. Louis, Missouri

Effective: July 5, 2012

CANCELLED
January 3, 2013
Missouri Public
Service Commission
JI-2013-0285

FILED
Missouri Public
Service Commission
JI-2012-0834

P.S.C. Mo. - No. 17
LOCAL EXCHANGE - MISSOURI PORTION TARIFF

Southwestern Bell Telephone
Company d/b/a AT&T Missouri

Section 2
28th Revised Sheet 1
Replacing 27th Revised Sheet 1

MISSOURI PORTION - BLYTHEVILLE, ARKANSAS EXCHANGE

1. GENERAL

This Tariff is governed, except as otherwise specified herein, by all other Tariffs of the Southwestern Bell Telephone Company on file in the State of Missouri, which are hereby made a part of this Tariff. Unless otherwise specified, the charges quoted in this Tariff or in any other Missouri Tariff are for periods of one month, are payable monthly in advance and entitle the customer to exchange telephone service within the Blytheville Exchange Area and Extended Area Service to the Dell, Arkansas, Exchange.

This exchange area includes, in addition in the Missouri portion, certain territory in the State of Arkansas comprising the City of Blytheville and vicinity, as shown on the exchange area map for this exchange.

2. RATES

The rates for main and extension service do not include a Telephone Company-provided instrument, except for Semi-Public Service, which includes one station equipped with a coin-collecting device.

2.1 Within the Base Rate Area, As shown on The Related Exchange Area Map:

<u>Class of Service</u>	<u>Current Monthly Rates(1)(2)</u>	
Urban Service		
Business		
Flat Rate -		
One-Party Line	\$34.00	(CR)
Multiline	43.00	(CR)
PBX Trunk	43.00	(CR)

- (1) For the period of November 26, 2008 through November 25, 2012, prices for residence basic local service in this exchange will be governed by Section 392.245.5(7) RSMo.
(2) For the period of November 26, 2008 through November 25, 2012, prices for business basic local service in this exchange will be governed by Section 392.245.5(7) RSMo.

Issued: October 28, 2011

Effective: November 9, 2011

CANCELLED
July 5, 2012
Missouri Public
Service Commission
JI-2012-0834

By JOHN SONDAG, President - Missouri
St. Louis, Missouri

FILED
Missouri Public
Service Commission
JI-2012-0194

P.S.C. Mo. - No. 17
LOCAL EXCHANGE - MISSOURI PORTION TARIFF

Southwestern Bell Telephone
Company d/b/a AT&T Missouri

Section 2
27th Revised Sheet 1
Replacing 26th Revised Sheet 1

MISSOURI PORTION - BLYTHEVILLE, ARKANSAS EXCHANGE

1. GENERAL

This Tariff is governed, except as otherwise specified herein, by all other Tariffs of the Southwestern Bell Telephone Company on file in the State of Missouri, which are hereby made a part of this Tariff. Unless otherwise specified, the charges quoted in this Tariff or in any other Missouri Tariff are for periods of one month, are payable monthly in advance and entitle the customer to exchange telephone service within the Blytheville Exchange Area and Extended Area Service to the Dell, Arkansas, Exchange.

This exchange area includes, in addition in the Missouri portion, certain territory in the State of Arkansas comprising the City of Blytheville and vicinity, as shown on the exchange area map for this exchange.

2. RATES

The rates for main and extension service do not include a Telephone Company-provided instrument, except for Semi-Public Service, which includes one station equipped with a coin-collecting device.

2.1 Within the Base Rate Area, As shown on The Related Exchange Area Map:

<u>Class of Service</u>	<u>Current Monthly Rates(1)(2)</u>	
Urban Service		
Business		
Flat Rate -		
One-Party Line	\$27.00	(CR)
Multiline	36.00	
PBX Trunk	31.32	

(1) For the period of November 26, 2008 through November 25, 2012, prices for residence basic local service in this exchange will be governed by Section 392.245.5(7) RSMo.

(2) For the period of November 26, 2008 through November 25, 2012, prices for business basic local service in this exchange will be governed by Section 392.245.5(7) RSMo.

P.S.C. Mo. - No. 17
LOCAL EXCHANGE - MISSOURI PORTION TARIFF

Southwestern Bell Telephone
Company d/b/a AT&T Missouri

Section 2
26th Revised Sheet 1
Replacing 25th Revised Sheet 1

MISSOURI PORTION - BLYTHEVILLE, ARKANSAS EXCHANGE

1. GENERAL

This Tariff is governed, except as otherwise specified herein, by all other Tariffs of the Southwestern Bell Telephone Company on file in the State of Missouri, which are hereby made a part of this Tariff. Unless otherwise specified, the charges quoted in this Tariff or in any other Missouri Tariff are for periods of one month, are payable monthly in advance and entitle the customer to exchange telephone service within the Blytheville Exchange Area and Extended Area Service to the Dell, Arkansas, Exchange.

This exchange area includes, in addition in the Missouri portion, certain territory in the State of Arkansas comprising the City of Blytheville and vicinity, as shown on the exchange area map for this exchange.

2. RATES

The rates for main and extension service do not include a Telephone Company-provided instrument, except for Semi-Public Service, which includes one station equipped with a coin-collecting device.

2.1 Within the Base Rate Area, As shown on The Related Exchange Area Map:

<u>Class of Service</u>	<u>Current Monthly Rates(1)(2)</u>	
Urban Service		
Business		
Flat Rate -		
One-Party Line	\$26.00	(CR)
Multiline	36.00	(CR)
PBX Trunk	31.32	

(1) For the period of November 26, 2008 through November 25, 2012, prices for residence basic local service in this exchange will be governed by Section 392.245.5(7) RSMo.

(2) For the period of November 26, 2008 through November 25, 2012, prices for business basic local service in this exchange will be governed by Section 392.245.5(7) RSMo.

P.S.C. Mo. - No. 17
LOCAL EXCHANGE - MISSOURI PORTION TARIFF

Southwestern Bell Telephone
Company d/b/a AT&T Missouri

Section 2
25th Revised Sheet 1
Replacing 24th Revised Sheet 1

MISSOURI PORTION - BLYTHEVILLE, ARKANSAS EXCHANGE

(AT)

1. GENERAL

This Tariff is governed, except as otherwise specified herein, by all other Tariffs of the Southwestern Bell Telephone Company on file in the State of Missouri, which are hereby made a part of this Tariff. Unless otherwise specified, the charges quoted in this Tariff or in any other Missouri Tariff are for periods of one month, are payable monthly in advance and entitle the customer to exchange telephone service within the Blytheville Exchange Area and Extended Area Service to the Dell, Arkansas, Exchange.

This exchange area includes, in addition in the Missouri portion, certain territory in the State of Arkansas comprising the City of Blytheville and vicinity, as shown on the exchange area map for this exchange.

2. RATES

The rates for main and extension service do not include a Telephone Company-provided instrument, except for Semi-Public Service, which includes one station equipped with a coin-collecting device.

2.1 Within the Base Rate Area, As shown on The Related Exchange Area Map:

<u>Class of Service</u>	<u>Current Monthly Rates(1)(2)</u>	(AT)
Urban Service		
Business		
Flat Rate -		
One-Party Line	\$24.71	
Multiline	31.32	
PBX Trunk	31.32	

- (1) For the period of November 26, 2008 through November 25, 2012, prices for residence basic local service in this exchange will be governed by Section 392.245.5(7) RSMo. (AT)
- (2) For the period of November 26, 2008 through November 25, 2012, prices for business basic local service in this exchange will be governed by Section 392.245.5(7) RSMo. (AT)

Issued: July 2, 2009

By DAVID NICHOLS, President - Missouri
St. Louis, Missouri

Effective: July 12, 2009

CANCELLED
January 7, 2010
Missouri Public
Service Commission
JI-2010-0424

Filed
Missouri Public
Service Commission
JI-2010-0004

No Supplement to this tariff will be issued except for the purpose of canceling this tariff.

Missouri Portion-
Blytheville, Arkansas Exchange
24th Revised Sheet 1
Replacing 23rd Revised Sheet 1

(RT)

LOCAL EXCHANGE TARIFF

1.1. GENERAL

This Tariff is governed, except as otherwise specified herein, by all other Tariffs of the Southwestern Bell Telephone Company on file in the State of Missouri, which are hereby made a part of this Tariff. Unless otherwise specified, the charges quoted in this Tariff or in any other Missouri Tariff are for periods of one month, are payable monthly in advance and entitle the customer to exchange telephone service within the Blytheville Exchange Area and Extended Area Service to the Dell, Arkansas, Exchange.

This exchange area includes, in addition in the Missouri portion, certain territory in the State of Arkansas comprising the City of Blytheville and vicinity, as shown on the exchange area map for this exchange.

1.2 RATES

The rates for main and extension service do not include a Telephone Company-provided instrument, except for Semi-Public Service, which includes one station equipped with a coin-collecting device.

1.2.1 Within the Base Rate Area, As shown on The Related Exchange Area Map:

<u>Class of Service</u>	<u>Current Monthly Rates(1)</u>
Urban Service	
Business	
Flat Rate -	
One-Party Line	\$24.71(CR)
Multiline	31.32
PBX Trunk	31.32

(1) See Sheet 2 for maximum allowable rates.

Issued: October 17, 2005

Effective: December 1, 2005

By CINDY BRINKLEY, President-SBC Missouri
Southwestern Bell Telephone, L.P., d/b/a SBC Missouri
St. Louis, Missouri

No Supplement to this tariff will be issued except for the purpose of canceling this tariff.

Missouri Portion-
Blytheville, Arkansas, Exchange
23rd Revised Sheet 1
Replacing 22nd Revised Sheet 1

SOUTHWESTERN BELL TELEPHONE COMPANY
LOCAL EXCHANGE TARIFF

1.1. GENERAL

This Tariff is governed, except as otherwise specified herein, by all other Tariffs of the Southwestern Bell Telephone Company on file in the State of Missouri, which are hereby made a part of this Tariff. Unless otherwise specified, the charges quoted in this Tariff or in any other Missouri Tariff are for periods of one month, are payable monthly in advance and entitle the customer to exchange telephone service within the Blytheville Exchange Area and Extended Area Service to the Dell, Arkansas, Exchange.

This exchange area includes, in addition in the Missouri portion, certain territory in the State of Arkansas comprising the City of Blytheville and vicinity, as shown on the exchange area map for this exchange.

1.2 RATES

The rates for main and extension service do not include a Telephone Company-provided instrument, except for Semi-Public Service, which includes one station equipped with a coin-collecting device.

1.2.1 Within the Base Rate Area, As shown on The Related Exchange Area Map:

<u>Class of Service</u>	<u>Current Monthly Rates(1)</u>
Urban Service	
Business	
Flat Rate -	
One-Party Line	\$25.21(CR)
Multiline	31.32
PBX Trunk	31.32

CANCELLED

DEC 01 2005

By 24th RS 1
Public Service Commission
MISSOURI

(1) See Sheet 2 for maximum allowable rates.

Issued: October 15, 2004

Effective: December 1, 2004

By CINDY BRINKLEY, President-SBC Missouri
Southwestern Bell Telephone, L.P., d/b/a SBC Missouri
St. Louis, Missouri

**FILED
MO PSC**

No Supplement to this tariff will be issued except for the purpose of canceling this tariff.

Missouri Portion-
Blytheville, Arkansas, Exchange
22nd Revised Sheet 1
Replacing 21st Revised Sheet 1
Missouri Public

**SOUTHWESTERN BELL TELEPHONE COMPANY
LOCAL EXCHANGE TARIFF**

REC'D OCT 15 2003

1.1. GENERAL

This Tariff is governed, except as otherwise specified herein, by all other Tariffs of the **Service Commission** Southwestern Bell Telephone Company on file in the State of Missouri, which are hereby made a part of this Tariff. Unless otherwise specified, the charges quoted in this Tariff or in any other Missouri Tariff are for periods of one month, are payable monthly in advance and entitle the customer to exchange telephone service within the Blytheville Exchange Area and Extended Area Service to the Dell, Arkansas, Exchange.

This exchange area includes, in addition in the Missouri portion, certain territory in the State of Arkansas comprising the City of Blytheville and vicinity, as shown on the exchange area map for this exchange.

1.2 RATES

The rates for main and extension service do not include a Telephone Company-provided instrument, except for Semi-Public Service, which includes one station equipped with a coin-collecting device.

1.2.1 Within the Base Rate Area, As shown on The Related Exchange Area Map:

<u>Class of Service</u>	<u>Current Monthly Rates(1)</u>
Urban Service	
Business	
Flat Rate -	
One-Party Line	\$25.90(CR)
Multiline	31.32
PBX Trunk	31.32

CANCELLED

DEC 01 2004
By 23rd RSI
Public Service Commission
MISSOURI

(1) See Sheet 2 for maximum allowable rates.

Issued: October 15, 2003

Effective: December 1, 2003

By CINDY BRINKLEY, President-SBC Missouri
Southwestern Bell Telephone, L.P., d/b/a SBC Missouri
St. Louis, Missouri

**Missouri Public
Service Commission**

FILED DEC 01 2003

No Supplement to this tariff will be issued except for the purpose of canceling this tariff.

Missouri Portion-
Blytheville Arkansas, Exchange
21st Revised Sheet 1
Replacing 20th Revised Sheet 1

SOUTHWESTERN BELL TELEPHONE COMPANY
LOCAL EXCHANGE TARIFF

Missouri Public
Service Commission

REC'D OCT 15 2002

1.1. GENERAL

This Tariff is governed, except as otherwise specified herein, by all other Tariffs of the Southwestern Bell Telephone Company on file in the State of Missouri, which are hereby made a part of this Tariff. Unless otherwise specified, the charges quoted in this Tariff or in any other Missouri Tariff are for periods of one month, are payable monthly in advance and entitle the customer to exchange telephone service within the Blytheville Exchange Area and Extended Area Service to the Dell, Arkansas, Exchange.

This exchange area includes, in addition in the Missouri portion, certain territory in the State of Arkansas comprising the City of Blytheville and vicinity, as shown on the exchange area map for this exchange.

1.2 RATES

The rates for main and extension service do not include a Telephone Company-provided instrument, except for Semi-Public Service, which includes one station equipped with a coin-collecting device.

1.2.1 Within the Base Rate Area, As shown on The Related Exchange Area Map:

<u>Class of Service</u>	<u>Current Monthly Rates(1)</u>
Urban Service	
Business	
Flat Rate -	
One-Party Line	\$25.91(CR)
Multiline	31.32
PBX Trunk	31.32

CANCELLED

DEC 01 2003

2nd fl
Missouri Public Service Commission
MISSOURI

Missouri Public
Service Commission

FILED DEC 01 2002

(1) See Sheet 2 for maximum allowable rates.

Issued: October 15, 2002

Effective: December 1, 2002

By CINDY BRINKLEY, President-Missouri
Southwestern Bell Telephone, L.P., d/b/a Southwestern Bell Telephone Company
St. Louis, Missouri

No supplement to this tariff will be issued except for the purpose of canceling this tariff.

MISSOURI PORTION- BLYTHEVILLE,
 ARKANSAS, EXCHANGE
 20th Revised Sheet 1
 Replacing 19th Revised Sheet 1

SOUTHWESTERN BELL TELEPHONE COMPANY
 LOCAL EXCHANGE TARIFF

Missouri Public

REC'D OCT 01 2001

1.1 GENERAL

Service Commission

This Tariff is governed, except as otherwise specified herein, by all other Tariffs of the Southwestern Bell Telephone Company on file in the State of Missouri, which are hereby made a part of this Tariff. Unless otherwise specified, the charges quoted in this Tariff or in any other Missouri Tariff are for periods of one month, are payable monthly in advance and entitle the customer to exchange telephone service within the Blytheville Exchange Area and Extended Area Service to the Dell, Arkansas, Exchange.

This exchange area includes, in addition in the Missouri portion, certain territory in the State of Arkansas comprising the City of Blytheville and vicinity, as shown on the exchange area map for this exchange.

1.2 RATES

The rates for main and extension service do not include a Telephone Company-provided instrument, except for Semi-Public Service, which includes one station equipped with a coin-collecting device.

1.2.1 Within the Base Rate Area, As shown on The Related Exchange Area Map:

<u>CLASS OF SERVICE</u>	<u>CURRENT MONTHLY RATES (1)</u>
Urban Service	
Business	
Flat Rate -	
One-Party Line	\$25.68(CR)
Multiline	31.32
PBX Trunk	31.32

CANCELLED

DEC 01 2002
 219RS1
 Public Service Commission
 MISSOURI

(1) See Sheet 2 for maximum allowable rates.

Issued: October 1, 2001

Effective: December 1, 2001

By JAN NEWTON, President-Missouri
 Southwestern Bell Telephone Company
 St. Louis, Missouri

Missouri Public

FILED DEC 01 2001

Service Commission

No supplement to this tariff will be issued except for the purpose of canceling this tariff.

MISSOURI PORTION- BLYTHEVILLE,
 ARKANSAS, EXCHANGE
 19th Revised Sheet 1
 Replacing 18th Revised Sheet 1

SOUTHWESTERN BELL TELEPHONE COMPANY
 LOCAL EXCHANGE TARIFF **Missouri Public Service Commission**

REC'D OCT 02 2000

1.1 GENERAL

This Tariff is governed, except as otherwise specified herein, by all other Tariffs of the Southwestern Bell Telephone Company on file in the State of Missouri, which are hereby made a part of this Tariff. Unless otherwise specified, the charges quoted in this Tariff or in any other Missouri Tariff are for periods of one month, are payable monthly in advance and entitle the customer to exchange telephone service within the Blytheville Exchange Area and Extended Area Service to the Dell, Arkansas, Exchange.

This exchange area includes, in addition in the Missouri portion, certain territory in the State of Arkansas comprising the City of Blytheville and vicinity, as shown on the exchange area map for this exchange.

1.2 RATES

The rates for main and extension service do not include a Telephone Company-provided instrument, except for Semi-Public Service, which includes one station equipped with a coin-collecting device.

1.2.1 Within the Base Rate Area, As shown on The Related Exchange Area Map:

(AT)

<u>Class Of Service</u>	<u>Current Monthly Rates (1)</u>
Urban Service	
Business	
Flat Rate -	
One-Party Line	\$25.87(CR)
Multiline	31.32
PBX Trunk	31.32

CANCELLED

DEC 01 2001
 Public Service Commission
 MISSOURI

Missouri Public Service Commission

FILED DEC 01 2000

(AT)

(1) See Sheet 2 for maximum allowable rates.

Issued: October 2, 2000

Effective: December 1, 2000

By JAN NEWTON, President-Missouri
 Southwestern Bell Telephone Company
 St. Louis, Missouri

No supplement to this tariff will be issued except for the purpose of canceling this tariff.

MISSOURI PORTION-BLYTHEVILLE, ARKANSAS, EXCHANGE
18th Revised Sheet 1
Replacing 17th Revised Sheet 1

SOUTHWESTERN BELL TELEPHONE COMPANY
LOCAL EXCHANGE TARIFF

1.1 GENERAL

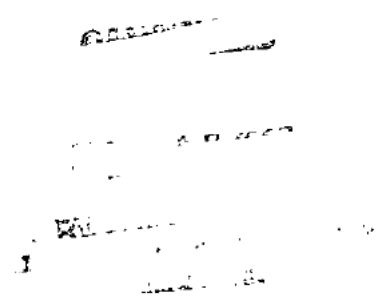
This Tariff is governed, except as otherwise specified herein, by all other Tariffs of the Southwestern Bell Telephone Company on file in the State of Missouri, which are hereby made a part of this Tariff. Unless otherwise specified, the charges quoted in this Tariff or in any other Missouri Tariff are for periods of one month, are payable monthly in advance and entitle the customer to exchange telephone service within the Blytheville Exchange Area and Extended Area Service to the Dell, Arkansas, Exchange.

This exchange area includes, in addition in the Missouri portion, certain territory in the State of Arkansas comprising the City of Blytheville and vicinity, as shown on the exchange area map for this exchange.

1.2 RATES

The rates for main and extension service do not include a Telephone Company-provided instrument except for Semi-Public Service, which includes one station equipped with a coin-collecting device.

(RT)
(RT)
(RT)
(RT)



1.2.1 Within The Base Rate Area, As Shown On The Related Exchange Area Map:

<u>Class of Service</u>	<u>Monthly Rates</u>
Urban Service	
Business	
Flat Rate -	
One-Party Line	(CR) \$26.11
Multiline.	(CR) 31.32
PBX Trunk	31.32

CANCELLED

DEC 01 2000

By: *R.D.S.*
Public Service Commission
MISSOURI

(DR)
(MR)

FILED

Issued: AUG 25 1988

Effective: ~~SEP 30 1988~~
DEC 1 1988

DEC 1 1988

By R. D. BARRON, President-Missouri Division
Southwestern Bell Telephone Company
St. Louis, Missouri

Public Service Commission

P.S.C. Mo. - No. 17
LOCAL EXCHANGE - MISSOURI PORTION TARIFF

Southwestern Bell Telephone
Company d/b/a AT&T Missouri

Section 2
23rd Revised Sheet 1.1
Replacing 22nd Revised Sheet 1.1

MISSOURI PORTION - BLYTHEVILLE, ARKANSAS EXCHANGE

2. RATES (cont'd)

2.1 Within the Base Rate Area, As shown on The Related Exchange Area Map: (cont'd)

<u>Class of Service</u>	<u>Current Monthly Rates(1)(2)</u>	
Urban Service (cont'd)		
Residence		
Flat Rate -	\$24.00	
One-Party Line	(3)	(CR)
Multiline	15.00	
PBX Trunk	15.00	

- (1) For the period of November 26, 2008 through November 25, 2012, prices for residence basic local service in this exchange will be governed by Section 392.245.5(7) RSMo.
- (2) For the period of November 26, 2008 through November 25, 2012, prices for business basic local service in this exchange will be governed by Section 392.245.5(7) RSMo.
- (3) A customer eligible under established criteria can receive a discount from his or her bill for residential essential local telecommunications services, in accordance with P.S.C. Mo. – No. 24, Local Exchange Tariff, Section 1.2.2.E, regarding Lifeline Service.

Issued: December 24, 2013

CANCELLED
May 1, 2014
Missouri Public
Service Commission
JI-2014-0379

By JOHN SONDAG, President - Missouri
St. Louis, Missouri

Effective: January 3, 2014

FILED
Missouri Public
Service Commission
JI-2014-0269

P.S.C. Mo. - No. 17
LOCAL EXCHANGE - MISSOURI PORTION TARIFF

Southwestern Bell Telephone
Company d/b/a AT&T Missouri

Section 2
22nd Revised Sheet 1.1
Replacing 21st Revised Sheet 1.1

MISSOURI PORTION - BLYTHEVILLE, ARKANSAS EXCHANGE

2. RATES (cont'd)

2.1 Within the Base Rate Area, As shown on The Related Exchange Area Map: (cont'd)

<u>Class of Service</u>	<u>Current Monthly Rates(1)(2)</u>	
Urban Service (cont'd)		
Residence		
Flat Rate -	\$23.00	(CR)
One-Party Line	(3)	
Multiline	15.00	
PBX Trunk	15.00	

- (1) For the period of November 26, 2008 through November 25, 2012, prices for residence basic local service in this exchange will be governed by Section 392.245.5(7) RSMo.
- (2) For the period of November 26, 2008 through November 25, 2012, prices for business basic local service in this exchange will be governed by Section 392.245.5(7) RSMo.
- (3) A customer eligible under established criteria can receive a discount from his or her bill for residential essential local telecommunications services, in accordance with P.S.C. Mo. – No. 24, Local Exchange Tariff, Section 1.2.2.E, regarding Lifeline Service.

Issued: December 24, 2012

CANCELLED
January 3, 2014
Missouri Public
Service Commission
JI-2014-0269

By JOHN SONDAG, President - Missouri
St. Louis, Missouri

Effective: January 3, 2013

FILED
Missouri Public
Service Commission
JI-2013-0285

P.S.C. Mo. - No. 17
LOCAL EXCHANGE - MISSOURI PORTION TARIFF

Southwestern Bell Telephone
Company d/b/a AT&T Missouri

Section 2
21st Revised Sheet 1.1
Replacing 20th Revised Sheet 1.1

MISSOURI PORTION - BLYTHEVILLE, ARKANSAS EXCHANGE

2. RATES (cont'd)

2.1 Within the Base Rate Area, As shown on The Related Exchange Area Map: (cont'd)

<u>Class of Service</u>	<u>Current Monthly Rates(1)(2)</u>	
Urban Service (cont'd)		
Residence		
Flat Rate -	\$21.00	(CR)
One-Party Line	(3)	
Multiline	15.00	
PBX Trunk	15.00	

- (1) For the period of November 26, 2008 through November 25, 2012, prices for residence basic local service in this exchange will be governed by Section 392.245.5(7) RSMo.
- (2) For the period of November 26, 2008 through November 25, 2012, prices for business basic local service in this exchange will be governed by Section 392.245.5(7) RSMo.
- (3) A customer eligible under established criteria can receive a discount from his or her bill for residential essential local telecommunications services, in accordance with P.S.C. Mo. – No. 24, Local Exchange Tariff, Section 1.2.2.E, regarding Lifeline Service.

Issued: July 3, 2012

By JOHN SONDAG, President - Missouri
St. Louis, Missouri

Effective: July 13, 2012

CANCELLED
January 3, 2013
Missouri Public
Service Commission
JI-2013-0285

FILED
Missouri Public
Service Commission
JI-2013-0013

P.S.C. Mo. - No. 17
LOCAL EXCHANGE - MISSOURI PORTION TARIFF

Southwestern Bell Telephone
Company d/b/a AT&T Missouri

Section 2
20th Revised Sheet 1.1
Replacing 19th Revised Sheet 1.1

MISSOURI PORTION - BLYTHEVILLE, ARKANSAS EXCHANGE

2. RATES (cont'd)

2.1 Within the Base Rate Area, As shown on The Related Exchange Area Map: (cont'd)

<u>Class of Service</u>	<u>Current Monthly Rates(1)(2)</u>	
Urban Service (cont'd)		
Residence		
Flat Rate -	\$18.50	
One-Party Line	(3)	(CR)
Multiline	15.00	
PBX Trunk	15.00	

- (1) For the period of November 26, 2008 through November 25, 2012, prices for residence basic local service in this exchange will be governed by Section 392.245.5(7) RSMo.
- (2) For the period of November 26, 2008 through November 25, 2012, prices for business basic local service in this exchange will be governed by Section 392.245.5(7) RSMo.
- (3) A customer eligible under established criteria can receive a discount from his or her bill for residential essential local telecommunications services, in accordance with P.S.C. Mo. – No. 24, Local Exchange Tariff, Section 1.2.2.E, regarding Lifeline Service.

Issued: July 1, 2011

Effective: July 13, 2011

CANCELLED
July 13, 2012
Missouri Public
Service Commission
JI-2013-0013

By JOHN SONDAG, President - Missouri
St. Louis, Missouri

FILED
Missouri Public
Service Commission
JI-2011-0671

P.S.C. Mo. - No. 17
LOCAL EXCHANGE - MISSOURI PORTION TARIFF

Southwestern Bell Telephone
Company d/b/a AT&T Missouri

Section 2
19th Revised Sheet 1.1
Replacing 18th Revised Sheet 1.1

MISSOURI PORTION - BLYTHEVILLE, ARKANSAS EXCHANGE

2. RATES (cont'd)

2.1 Within the Base Rate Area, As shown on The Related Exchange Area Map: (cont'd)

<u>Class of Service</u>	<u>Current Monthly Rates(1)(2)</u>	
Urban Service (cont'd)		
Residence		
Flat Rate -	\$16.83	(CR)
One-Party Line	(3)	
Multiline	15.00	
PBX Trunk	15.00	

- (1) For the period of November 26, 2008 through November 25, 2012, prices for residence basic local service in this exchange will be governed by Section 392.245.5(7) RSMo.
- (2) For the period of November 26, 2008 through November 25, 2012, prices for business basic local service in this exchange will be governed by Section 392.245.5(7) RSMo.
- (3) A customer eligible under established criteria can receive a discount from his or her bill for residential essential local telecommunications services, in accordance with P.S.C. Mo. – No. 24, Local Exchange Tariff, Section 1.2.2.E, regarding Lifeline Service.

Issued: June 29, 2010

CANCELED
JI-2011-0671
Missouri Public
Service Commission
JI-2011-0671

By DAVID NICHOLS, President - Missouri
St. Louis, Missouri

Effective: July 9, 2010

FILED
Missouri Public
Service Commission
JI-2010-0755

P.S.C. Mo. - No. 17
LOCAL EXCHANGE - MISSOURI PORTION TARIFF

Southwestern Bell Telephone
Company d/b/a AT&T Missouri

Section 2
18th Revised Sheet 1.1
Replacing 17th Revised Sheet 1.1

17th Revised Sheet 1.1 was previously 17th Revised Sheet 1.01 (AT)

MISSOURI PORTION - BLYTHEVILLE, ARKANSAS EXCHANGE (AT)

2. RATES (cont'd)

2.1 Within the Base Rate Area, As shown on The Related Exchange Area Map: (cont'd)

<u>Class of Service</u>	<u>Current Monthly Rates(1)(2)</u>	(AT)
Urban Service (cont'd)		
Residence		
Flat Rate -		
One-Party Line	\$13.83	(CR)
Multiline	(3)	(CT)
PBX Trunk	15.00	
	15.00	

- (1) For the period of November 26, 2008 through November 25, 2012, prices for residence basic local service in this exchange will be governed by Section 392.245.5(7) RSMo. (AT)
- (2) For the period of November 26, 2008 through November 25, 2012, prices for business basic local service in this exchange will be governed by Section 392.245.5(7) RSMo. (AT)
- (3) A customer eligible under established criteria can receive a discount from his or her bill for residential essential local telecommunications services, in accordance with P.S.C. Mo. – No. 24, Local Exchange Tariff, Section 1.2.2.E, regarding Lifeline Service. (CT)

No Supplement to this tariff will be issued except for the purpose of canceling this tariff.

Missouri Portion-
Blytheville, Arkansas Exchange
17th Revised Sheet 1.01
Replacing 16th Revised Sheet 1.01

LOCAL EXCHANGE TARIFF

1.2 RATES (cont'd)

1.2.1 Within the Base Rate Area, As shown on The Related Exchange Area Map: (cont'd)

<u>Class of Service</u>	<u>Current Monthly Rates(1)</u>
Urban Service (cont'd)	
Residence	
Flat Rate -	
One-Party Line	\$11.83(CR)
Lifeline	(2)
Multiline	15.00
PBX Trunk	15.00

- (1) See Sheet 2 for maximum allowable rates.
- (2) A customer eligible under established criteria can receive a discount from his or her bill for residential essential local telecommunications services, in accordance with P.S.C. Mo. – No. 24, Local Exchange Tariff, Section 1.2.2.E, regarding Lifeline Service.

Issued: October 17, 2005

Effective: December 1, 2005

By CINDY BRINKLEY, President-SBC Missouri
Southwestern Bell Telephone, L.P., d/b/a SBC Missouri
St. Louis, Missouri

No Supplement to this tariff will be issued except for the purpose of canceling this tariff.

Missouri Portion-
Blytheville, Arkansas Exchange
16th Revised Sheet 1.01
Replacing 15th Revised Sheet 1.01

(RT)

LOCAL EXCHANGE TARIFF

1.2 RATES (cont'd)

1.2.1 Within the Base Rate Area, As shown on The Related Exchange Area Map: (cont'd)

	<u>Class of Service</u>	<u>Current Monthly Rates(1)</u>
	Urban Service (cont'd)	
	Residence	
	Flat Rate -	
(CT)(CR)	One-Party Line	\$12.07
	Lifeline	(2)
	Multiline	15.00
	PBX Trunk	15.00

CANCELLED

DEC 01 2005

By *17th RS 1.01*
Public Service Commission
MISSOURI

- (1) See Sheet 2 for maximum allowable rates.
- (AT) (2) A customer eligible under established criteria can receive a discount from his or her bill for residential essential local telecommunications services, in accordance with P.S.C. Mo. - No. 24, Local Exchange Tariff, Section 1.2.2.E, regarding Lifeline Service.

Issued: April 1, 2005

Effective: May 1, 2005

By CINDY BRINKLEY, President-SBC Missouri
Southwestern Bell Telephone, L.P., d/b/a SBC Missouri
St. Louis, Missouri

TO-1998-0329

FILED
MO PSC

No Supplement to this tariff will be issued except for the purpose of canceling this tariff.

Missouri Portion-
Blytheville, Arkansas, Exchange
15th Revised Sheet 1.01
Replacing 14th Revised Sheet 1.01

SOUTHWESTERN BELL TELEPHONE COMPANY
LOCAL EXCHANGE TARIFF

1.2 RATES (cont'd)

1.2.1 Within the Base Rate Area, As shown on The Related Exchange Area Map: (cont'd)

<u>Class of Service</u>	<u>Current Monthly Rates(1)</u>
Urban Service (cont'd)	
Residence	
Flat Rate -	
One-Party Line	\$12.07(CR)
Lifeline(2)	8.57(CR)
Multiline	15.00
PBX Trunk	15.00

CANCELLED

MAY 01 2005
By *Walters 1.01*
Public Service Commission
MISSOURI

- (1) See Sheet 2 for maximum allowable rates.
- (2) See P.S.C. Mo. – No. 24, Local Exchange Tariff, Section 1.2.2.E, for description, terms and conditions related to Lifeline Service.

Issued: October 15, 2004

Effective: December 1, 2004

By CINDY BRINKLEY, President-SBC Missouri
Southwestern Bell Telephone, L.P., d/b/a SBC Missouri
St. Louis, Missouri

**FILED
MO PSC**

No Supplement to this tariff will be issued except for the purpose of canceling this tariff.

Missouri Portion-
Blytheville, Arkansas, Exchange
14th Revised Sheet 1.01
Replacing 13th Revised Sheet 1.01
Missouri Public

SOUTHWESTERN BELL TELEPHONE COMPANY Service Commission
LOCAL EXCHANGE TARIFF

REC'D MAY 10 2004

1.2 RATES (cont'd)

1.2.1 Within the Base Rate Area, As shown on The Related Exchange Area Map: (cont'd)

	<u>Class of Service</u>	<u>Current Monthly Rates(1)</u>
	Urban Service (cont'd)	
	Residence	
	Flat Rate -	
(AT)	One-Party Line	\$12.40
	Lifeline(2)	8.90(NR)
	Multiline	15.00
	PBX Trunk	15.00

CANCELLED

DEC 01 2004
By *SWRS 1.01*
Public Service Commission
MISSOURI

- (1) See Sheet 2 for maximum allowable rates.
- (AT) (2) See P.S.C. Mo. – No. 24, Local Exchange Tariff, Section 1.2.2.E, for description, terms and conditions related to Lifeline Service.

Issued: May 10, 2004

Effective: June 9, 2004

By CINDY BRINKLEY, President-SBC Missouri
Southwestern Bell Telephone, L.P., d/b/a SBC Missouri
St. Louis, Missouri

Missouri Public
Service Commission

FILED JUN 09 2004

No Supplement to this tariff will be issued except for the purpose of canceling this tariff.

Missouri Portion-
Blytheville, Arkansas, Exchange
13th Revised Sheet 1.01
Replacing 12th Revised Sheet 1.01

SOUTHWESTERN BELL TELEPHONE COMPANY
LOCAL EXCHANGE TARIFF

Missouri Public

1.2 RATES (cont'd)

1.2.1 Within the Base Rate Area, As shown on The Related Exchange Area Map: (cont'd)

REC'D OCT 15 2003

Class of Service

Current Monthly Rates (1) Service Commission

Urban Service (cont'd)

Residence

Flat Rate -

One-Party Line

\$12.40(CR)

Multiline

15.00

PBX Trunk

15.00

CANCELLED

JUN 09 2004
1,144/251.01
Public Service Commission
MISSOURI

(1) See Sheet 2 for maximum allowable rates.

Issued: October 15, 2003

Effective: December 1, 2003

By CINDY BRINKLEY, President-SBC Missouri
Southwestern Bell Telephone, L.P., d/b/a SBC Missouri
St. Louis, Missouri

Missouri Public
Service Commission

FILED DEC 01 2003

No Supplement to this tariff will be issued except for the purpose of canceling this tariff.

Missouri Portion-
Blytheville, Arkansas, Exchange
12th Revised Sheet 1.01
Replacing 11th Revised Sheet 1.01

SOUTHWESTERN BELL TELEPHONE COMPANY
LOCAL EXCHANGE TARIFF

Missouri Public
Service Commission

1.2 RATES (cont'd)

REC'D OCT 15 2002

1.2.1 Within the Base Rate Area, As shown on The Related Exchange Area Map: (cont'd)

<u>Class of Service</u>	<u>Current Monthly Rates(1)</u>
Urban Service (cont'd)	
Residence	
Flat Rate -	
One-Party Line	\$12.41(CR)
Multiline	15.00
PBX Trunk	15.00

CANCELLED

DEC 01 2003
by 134RS/1.01
Public Service Commission
MISSOURI

Missouri Public
Service Commission

(1) See Sheet 2 for maximum allowable rates.

FILED DEC 01 2002

Issued: October 15, 2002

Effective: December 1, 2002

By CINDY BRINKLEY, President-Missouri
Southwestern Bell Telephone, L.P., d/b/a Southwestern Bell Telephone Company
St. Louis, Missouri

No supplement to this tariff will be issued except for the purpose of canceling this tariff.

MISSOURI PORTION- BLYTHEVILLE,
ARKANSAS, EXCHANGE
11th Revised Sheet 1.01
Replacing 10th Revised Sheet 1.01

SOUTHWESTERN BELL TELEPHONE COMPANY
LOCAL EXCHANGE TARIFF

Missouri Public

REC'D OCT 01 2001

1.2 RATES-(Continued)

1.2.1 Within the Base Rate Area, As shown on The Related Exchange Area Map-(Continued).

Service Commission

CLASS OF SERVICE

CURRENT MONTHLY RATES (1)

Urban Service-(Continued)

Residence

Flat Rate -

One-Party Line

\$12.30(CR)

Multiline

15.00

PBX Trunk

15.00

CANCELLED

DEC 01 2002

12th RS 1.01
Public Service Commission
MISSOURI

(1) See Sheet 2 for maximum allowable rates.

Issued: October 1, 2001

Effective: December 1, 2001

By JAN NEWTON, President-Missouri
Southwestern Bell Telephone Company
St. Louis, Missouri

Missouri Public

FILED DEC 01 2001

Service Commission

No supplement to this tariff will be issued except for the purpose of canceling this tariff.

MISSOURI PORTION- BLYTHEVILLE, ARKANSAS, EXCHANGE
10th Revised Sheet 1.01
Replacing 9th Revised Sheet 1.01

SOUTHWESTERN BELL TELEPHONE COMPANY **Missouri Public Service Commission**
LOCAL EXCHANGE TARIFF

1.2 RATES-(Continued)

REC'D OCT 02 2000

1.2.1 Within the Base Rate Area, As shown on The Related Exchange Area Map-(Continued):

(AT) CLASS OF SERVICE CURRENT MONTHLY RATES (1)

Urban Service-(Continued)

(RT)
|
(RT)

(DR)
|
(DR)

Residence	
Flat Rate -	
One-Party Line	\$12.39(CR)
Multiline	15.00
PBX Trunk	15.00

CANCELLED

DEC 01 2001
By *11/4/RS* \$1.01
Public Service Commission
MISSOURI
Missouri Public Service Commission

FILED DEC 01 2000

(RT)
(RT)
(CT)

(1) See Sheet 2 for maximum allowable rates.

Issued: October 2, 2000

Effective: December 1, 2000

By JAN NEWTON, President-Missouri
Southwestern Bell Telephone Company
St. Louis, Missouri

No supplement to this tariff will be issued except for the purpose of canceling this tariff.

RECEIVED
 MISSOURI PORTION-BLYTHEVILLE,
 ARKANSAS, EXCHANGE
 9th Revised Sheet 1.01
 Replacing 8th Revised Sheet 1.01

SOUTHWESTERN BELL TELEPHONE COMPANY
 LOCAL EXCHANGE TARIFF

MISSOURI
Public Service Commission

1.2 RATES-(Continued)

1.2.1 Within The Base Rate Area, As Shown On The Related Exchange Area Map:-
 (Continued)

Class of Service	Monthly Rates
Urban Service-(Continued)	
Semi-Public Rate -	
One-Party Line (1)	\$15.43
Extension Line (2), each	
Regular	
Rotary Dial	1.90
TOUCH-TONE Dial	3.45
With Coin-Collecting Device (2)	
Rotary Dial	4.05
TOUCH-TONE Dial	4.80
Residence	
Flat Rate -	
One-Party Line	12.51
	(DR)
Multiline	15.00
PBX Trunk	15.00

(RT)

CANCELLED

DEC 01 2000
 By 10th RSI.01
 Public Service Commission
 MISSOURI

- (1) Local messages originating at semi-public and public telephone are charged at 10 cents each.
- (2) Obsolete-applicable to existing installations at existing locations for existing customers.

FILED

Issued: FEB 07 1997

Effective: ~~MAR 10 1997~~ MAR 17 1997

By KAREN JENNINGS, President-Missouri
 Southwestern Bell Telephone Company
 St. Louis, Missouri

MO.PUBLICSERVICECOMM

No supplement to this tariff will be issued except for the purpose of canceling this tariff.

MISSOURI PORTION-BLYTHEVILLE,
ARKANSAS, EXCHANGE
8th Revised Sheet 1.01
Replacing 7th Revised Sheet 1.01

SOUTHWESTERN BELL TELEPHONE COMPANY
LOCAL EXCHANGE TARIFF

1.2 RATES-(Continued)

1.2.1 Within The Base Rate Area, As Shown On The Related Exchange Area Map:-
(Continued)

<u>Class of Service</u>	<u>Monthly Rates</u>
Urban Service-(Continued)	
Semi-Public Rate -	
One-Party Line(1)	(CR) \$15.43
Extension Line(2), each	
Regular	
Rotary Dial	(CR) 1.90
TOUCH-TONE Dial	(CR) 3.45
With Coin-Collecting Device(2)	
Rotary Dial	(CR) 4.05
TOUCH-TONE Dial	(CR) 4.80
Residence	
Flat Rate -	
One-Party Line	(CR) 12.51
Two-Party Line	(CR) 10.00
Multiline.	(CR) 15.00
(DR) PBX Trunk.	15.00
(NR)	

CANCELLED

MAR 17 1987
BY 9th P.S. # 1.01
Public Service Commission
MISSOURI

- (1) Local messages originating at semi-public and public telephones are charged at 10 cents each.
- (2) Obsolete-applicable to existing installations at existing locations for existing customers.

Issued: AUG 25 1988

Effective: ~~SEP 20 1988~~ FILED
DEC 1 1988

By R. D. Barron, President-Missouri Division
Southwestern Bell Telephone Company
St. Louis, Missouri

DEC 1 1988

Public Service Commission

P.S.C. Mo. - No. 17
LOCAL EXCHANGE - MISSOURI PORTION TARIFF

Southwestern Bell Telephone
Company d/b/a AT&T Missouri

Section 2
12th Revised Sheet 1.2
Replacing 11th Revised Sheet 1.2

11th Revised Sheet 1.2 was previously 11th Revised Sheet 1.02 (AT)

MISSOURI PORTION - BLYTHEVILLE, ARKANSAS EXCHANGE (AT)

2. RATES (cont'd)

2.1 Within the Base Rate Area, As shown on The Related Exchange Area Map: (cont'd)

<u>Class of Service</u>	<u>Current Monthly Rates(4)(5)</u>	(AT)
Suburban Service (1)		
Flat Rate -		
Business – 4-Party (3)	\$19.68	
Residence – 4-Party (3)	10.94	(CR)
Rural Service (1)		
Flat Rate -		
Business – 4-Party (2)	22.35	
Residence – 4-Party (2)	13.64	(CR)

- (1) Applicable where service offered.
- (2) Rate applicable only in an area six to nine miles beyond the base rate area. Beyond nine miles, but not more than 12 miles beyond the base rate area, an additional 24 cent monthly charge applies. Beyond 12 miles from the base rate area, an additional 24 cent monthly charge applies.
- (3) Beyond three miles airline distance of the base rate area boundary, additional monthly charges apply per main suburban telephone—24 cents per one-half mile or fraction thereof airline distance.
- (4) For the period of November 26, 2008 through November 25, 2012, prices for residence basic local service in this exchange will be governed by Section 392.245.5(7) RSMo. (AT)
- (5) For the period of November 26, 2008 through November 25, 2012, prices for business basic local service in this exchange will be governed by Section 392.245.5(7) RSMo. (AT)

Issued: July 2, 2009

Effective: July 12, 2009

CANCELLED
May 1, 2014
Missouri Public
Service Commission
JI-2014-0379

By DAVID NICHOLS, President - Missouri
St. Louis, Missouri

Filed
Missouri Public
Service Commission
JI-2010-0004

No Supplement to this tariff will be issued except for the purpose of canceling this tariff.

Missouri Portion-
Blytheville, Arkansas, Exchange
11th Revised Sheet 1.02
Replacing 10th Revised Sheet 1.02

(RT)

LOCAL EXCHANGE TARIFF

1.2. RATES (cont'd)

1.2.1 Within the Base Rate Area, As shown on The Related Exchange Area Map: (cont'd)

<u>Class of Service</u>	<u>Current Monthly Rates(4)</u>
Suburban Service (1)	
Flat Rate -	
Business – 4-Party (3)	\$19.68(CR)
Residence – 4-Party (3)	8.94(CR)
Rural Service (1)	
Flat Rate -	
Business – 4-Party (2)	22.35(CR)
Residence – 4-Party (2)	11.64(CR)

- (1) Applicable where service offered.
- (2) Rate applicable only in an area six to nine miles beyond the base rate area. Beyond nine miles, but not more than 12 miles beyond the base rate area, an additional 24 cent monthly charge applies. Beyond 12 miles from the base rate area, an additional 24 cent monthly charge applies.
- (3) Beyond three miles airline distance of the base rate area boundary, additional monthly charges apply per main suburban telephone—24 cents per one-half mile or fraction thereof airline distance.
- (4) See Sheet 2 for maximum allowable rates.

Issued: October 17, 2005

Effective: December 1, 2005

By CINDY BRINKLEY, President-SBC Missouri
Southwestern Bell Telephone, L.P., d/b/a SBC Missouri
St. Louis, Missouri

No Supplement to this tariff will be issued except for the purpose of canceling this tariff.

Missouri Portion-
Blytheville, Arkansas, Exchange
10th Revised Sheet 1.02
Replacing 9th Revised Sheet 1.02

SOUTHWESTERN BELL TELEPHONE COMPANY
LOCAL EXCHANGE TARIFF

1.2. RATES (cont'd)

1.2.1 Within the Base Rate Area, As shown on The Related Exchange Area Map: (cont'd)

<u>Class of Service</u>	<u>Current Monthly Rates(4)</u>
Suburban Service (1)	
Flat Rate -	
Business - 4-Party (3)	\$20.08(CR)
Residence - 4-Party (3)	9.12(CR)
Rural Service (1)	
Flat Rate -	
Business - 4-Party (2)	22.79(CR)
Residence - 4-Party (2)	11.87(CR)

CANCELLED

DEC 01 2005

By 114th RS 1.02
Public Service Commission
MISSOURI

- (1) Applicable where service offered.
- (2) Rate applicable only in an area six to nine miles beyond the base rate area. Beyond nine miles, but not more than 12 miles beyond the base rate area, an additional 24 (CR) cent monthly charge applies. Beyond 12 miles from the base rate area, an additional 24 (CR) cent monthly charge applies.
- (3) Beyond three miles airline distance of the base rate area boundary, additional monthly charges apply per main suburban telephone—24(CR) cents per one-half mile or fraction thereof airline distance.
- (4) See Sheet 2 for maximum allowable rates.

Issued: October 15, 2004

Effective: December 1, 2004

By CINDY BRINKLEY, President-SBC Missouri
Southwestern Bell Telephone, L.P., d/b/a SBC Missouri
St. Louis, Missouri

**FILED
MO PSC**

No Supplement to this tariff will be issued except for the purpose of canceling this tariff.

Missouri Portion-
Blytheville, Arkansas, Exchange
9th Revised Sheet 1.02
Replacing 8th Revised Sheet 1.02

Missouri Public

SOUTHWESTERN BELL TELEPHONE COMPANY
LOCAL EXCHANGE TARIFF

REC'D OCT 15 2003

1.2. RATES (cont'd)

1.2.1 Within the Base Rate Area, As shown on The Related Exchange Area Map: (cont'd) Services Commission

<u>Class of Service</u>	<u>Current Monthly Rates(4)</u>
Suburban Service (1)	
Flat Rate -	
Business - 4-Party (3)	\$20.63(CR)
Residence - 4-Party (3)	9.37
Rural Service (1)	
Flat Rate -	
Business - 4-Party (2)	23.42(CR)
Residence - 4-Party (2)	12.20(CR)

CANCELLED

DEC 01 2004
By LAUREN S. 1.02
Public Service Commission
MISSOURI

- (1) Applicable where service offered.
- (2) Rate applicable only in an area six to nine miles beyond the base rate area. Beyond nine miles, but not more than 12 miles beyond the base rate area, an additional 25 cent monthly charge applies. Beyond 12 miles from the base rate area, an additional 25 cent monthly charge applies.
- (3) Beyond three miles airline distance of the base rate area boundary, additional monthly charges apply per main suburban telephone—25 cents per one-half mile or fraction thereof airline distance.
- (4) See Sheet 2 for maximum allowable rates.

Issued: October 15, 2003

Effective: December 1, 2003

By CINDY BRINKLEY, President-SBC Missouri
Southwestern Bell Telephone, L.P., d/b/a SBC Missouri
St. Louis, Missouri

Missouri Public
Service Commission

FILED DEC 01 2003

No Supplement to this tariff will be issued except for the purpose of canceling this tariff.

Missouri Portion-
Blytheville, Arkansas, Exchange
8th Revised Sheet 1.02
Replacing 7th Revised Sheet 1.02

SOUTHWESTERN BELL TELEPHONE COMPANY **Missouri Public Service Commission**
LOCAL EXCHANGE TARIFF

1.2. RATES (cont'd)

REC'D OCT 15 2002

1.2.1 Within the Base Rate Area, As shown on The Related Exchange Area Map: (cont'd)

(AT)	<u>Class of Service</u>	<u>Current Monthly Rates(4)</u>
	Suburban Service (1)	
	Flat Rate -	
	Business - 4-Party (3)	\$20.64(CR)
	Residence - 4-Party (3)	9.37(CR)
	Rural Service (1)	
	Flat Rate -	
	Business - 4-Party (2)	23.43(CR)
	Residence - 4-Party (2)	12.21(CR)

CANCELLED

DEC 01 2003
9th BS1.02
Public Service Commission
PROC 2003

Missouri Public Service Commission

FILED DEC 01 2002

- (1) Applicable where service offered.
- (2) Rate applicable only in an area six to nine miles beyond the base rate area. Beyond nine miles, but not more than 12 miles beyond the base rate area, an additional 25 cent monthly charge applies. Beyond 12 miles from the base rate area, an additional 25 cent monthly charge applies.
- (3) Beyond three miles airline distance of the base rate area boundary, additional monthly charges apply per main suburban telephone—25 cents per one-half mile or fraction thereof airline distance.
- (4) See Sheet 2 for maximum allowable rates.

Issued: October 15, 2002

Effective: December 1, 2002

By CINDY BRINKLEY, President-Missouri
Southwestern Bell Telephone, L.P., d/b/a Southwestern Bell Telephone Company
St. Louis, Missouri

No supplement to this tariff will be issued except for the purpose of canceling this tariff.

MISSOURI PORTION- BLYTHEVILLE,
ARKANSAS, EXCHANGE
7th Revised Sheet 1.02
Replacing 6th Revised Sheet 1.02

SOUTHWESTERN BELL TELEPHONE COMPANY
LOCAL EXCHANGE TARIFF

Missouri Public

REC'D OCT 01 2001

1.2 RATES-(Continued)

Service Commission

1.2.2 Outside The Base Rate Area, But Within The Exchange Area:

Current Monthly Rates (4)

Suburban Service (1)

Flat Rate -

Business - 4-Party (3)
Residence - 4-Party (3)

\$20.46(CR)
9.29(CR)

Rural Service (1)

Flat Rate -

Business - 4-Party (2)
Residence - 4-Party (2)

23.22(CR)
12.10(CR)

CANCELLED

DEC 01 2002

844 RSI.02
Missouri Service Commission
MISSOURI

- (1) Applicable where service offered.
- (2) Rate applicable only in an area six to nine miles beyond the base rate area. Beyond nine miles, but not more than 12 miles beyond the base rate area, an additional 25 cent monthly charge applies. Beyond 12 miles from the base rate area, an additional 25 cent monthly charge applies.
- (3) Beyond three miles airline distance of the base rate area boundary, additional monthly charges apply per main suburban telephone—25 cents per one-half mile or fraction thereof airline distance.
- (4) See Sheet 2 for maximum allowable rates.

Issued: October 1, 2001

Effective: December 1, 2001

By JAN NEWTON, President-Missouri
Southwestern Bell Telephone Company
St. Louis, Missouri

Missouri Public

FILED DEC 01 2001

Service Commission

No supplement to this tariff will be issued except for the purpose of canceling this tariff.

MISSOURI PORTION- BLYTHEVILLE, ARKANSAS, EXCHANGE
6th Revised Sheet 1.02
Replacing 5th Revised Sheet 1.02

SOUTHWESTERN BELL TELEPHONE COMPANY Missouri Public
LOCAL EXCHANGE TARIFF Service Commission

REC'D OCT 02 2000

1.2 RATES-(Continued)

1.2.2 Outside The Base Rate Area, But Within The Exchange Area:

(AT)

Current Monthly Rates (4)

Suburban Service (1)

Flat Rate -

Business - 4-Party (3)	\$20.61(CR)
Residence - 4-Party (3)	9.36(CR)

Rural Service (1)

Flat Rate -

Business - 4-Party (2)	23.40(CR)
Residence - 4-Party (2)	12.19(CR)

CANCELLED

DEC 01 2001
By *JHRS 1.02*
Public Service Commission
MISSOURI

- (1) Applicable where service offered.
- (2) Rate applicable only in an area six to nine miles beyond the base rate area. Beyond nine miles, but not more than 12 miles beyond the base rate area, an additional 25 cent monthly charge applies. Beyond 12 miles from the base rate area, an additional 25 cent monthly charge applies.
- (3) Beyond three miles airline distance of the base rate area boundary, additional monthly charges apply per main suburban telephone—25 cents per one-half mile or fraction thereof airline distance.
- (4) See Sheet 2 for maximum allowable rates.

(AT)

Issued: October 2, 2000

Effective: December 1, 2000

By JAN NEWTON, President-Missouri
Southwestern Bell Telephone Company
St. Louis, Missouri

Missouri Public
Service Commission

FILED DEC 01 2000

No supplement to this tariff will be issued except for the purpose of canceling this tariff.

MISSOURI PORTION-BLYTHEVILLE, ARKANSAS, EXCHANGE
5th Revised Sheet 1.02
Replacing 4th Revised Sheet 1.02

SOUTHWESTERN BELL TELEPHONE COMPANY
LOCAL EXCHANGE TARIFF

1.2 RATES--(Continued)

1.2.2 Outside The Base Rate Area, But Within The Exchange Area:

<u>Class of Service</u>	<u>Monthly Rates</u>
Suburban Service(1)	
Flat Rate -	
Business - 4-Party(3)	(CR) \$20.80
Residence - 4-Party(3).	(CR) 9.45
Rural Service(1)	
Flat Rate -	
Business - 4-Party(2)	(CR) 23.62
Residence - 4-Party(2).	(CR) 12.30

CANCELLED

DEC 01 2000

By 6th RSI.02
Public Service Commission
MISSOURI

(RT)

- (FC) (1) Applicable where service is offered.
- (FC) (2) Rate applicable only in an area six to nine miles beyond the base rate area. Beyond nine miles, but not more than 12 miles beyond the base rate area, an additional 25-cent monthly charge applies. Beyond 12 miles from the base rate area, an additional 25-cent monthly charge applies.
- (FC) (3) Beyond three miles airline distance of the base rate area boundary, additional monthly charges apply per main suburban telephone--25 cents per one-half mile or fraction thereof airline distance.

Issued: AUG 25 1988

Effective: ~~SEP 29 1988~~
DEC 1 1988

FILED

DEC 1 1988

By R. D. BARRON, President-Missouri Division
Southwestern Bell Telephone Company
St. Louis, Missouri

Public Service Commission

P.S.C. Mo. - No. 17
LOCAL EXCHANGE - MISSOURI PORTION TARIFF

Southwestern Bell Telephone
Company d/b/a AT&T Missouri

Section 2
9th Revised Sheet 2
Replacing 8th Revised Sheet 2

(RT)

(RT)

Issued: July 2, 2009

By DAVID NICHOLS, President - Missouri
St. Louis, Missouri

Effective: July 12, 2009

CANCELLED
May 1, 2014
Missouri Public
Service Commission
JI-2014-0379

Filed
Missouri Public
Service Commission
JI-2010-0004

P.S.C. Mo. - No. 17

Missouri Portion-

Southwestern Bell Telephone
Company d/b/a AT&T Missouri

Blytheville, Arkansas Exchange
8th Revised Sheet 2
Replacing 7th Revised Sheet 2

LOCAL EXCHANGE TARIFF

1.2. RATES (cont'd)

1.2.1 Within the Base Rate Area, As shown on The Related Exchange Area Map: (cont'd)

Class of Service	Maximum Rates
Urban Service	
Business	
Flat Rate -	
One-Party Line	\$25.26(CR)
Residence	
Flat Rate -	
One-Party Line	12.10(CR)
Lifeline(1)	8.57
Suburban Service	
Flat Rate -	
Business – 4-Party	20.12(CR)
Residence – 4-Party	9.14(CR)
Rural Service	
Flat Rate -	
Business – 4-Party	22.85(CR)
Residence – 4-Party	11.90(CR)

(1) See P.S.C. Mo. – No. 24, Local Exchange Tariff, Section 1.2.2.E, for description, terms and conditions related to Lifeline Service.

Issued: December 31, 2007

Effective: February 16, 2008

By CINDY BRINKLEY, President – Missouri
St. Louis, Missouri

Cancelled
July 12, 2009
Missouri Public
Service Commission
JI-2010-0004

FILED
Missouri Public
Service Commission

P.S.C. Mo. - No. 17
Missouri Portion-

Southwestern Bell Telephone, L.P.
d/b/a AT&T Missouri

Blytheville, Arkansas Exchange
7th Revised Sheet 2
Replacing 6th Revised Sheet 2

LOCAL EXCHANGE TARIFF

1.2. RATES (cont'd)

1.2.1 Within the Base Rate Area, As shown on The Related Exchange Area Map: (cont'd)

<u>Class of Service</u>	<u>Maximum Rates</u>
Urban Service	
Business	
Flat Rate -	
One-Party Line	\$24.77(CR)
Residence	
Flat Rate -	
One-Party Line	11.86(CR)
Lifeline(1)	8.57
Suburban Service	
Flat Rate -	
Business – 4-Party	19.72(CR)
Residence – 4-Party	8.96(CR)
Rural Service	
Flat Rate -	
Business – 4-Party	22.40(CR)
Residence – 4-Party	11.67(CR)

(1) See P.S.C. Mo. – No. 24, Local Exchange Tariff, Section 1.2.2.E, for description, terms and conditions related to Lifeline Service.

Issued: October 17, 2006

Effective: December 1, 2006

By CINDY BRINKLEY, President – Missouri
St. Louis, Missouri

CANCELLED
February 16, 2008
Missouri Public
Service Commission

Filed
Missouri Public
Service Commission

No Supplement to this tariff will be issued except for the purpose of canceling this tariff.

Missouri Portion-
Blytheville, Arkansas, Exchange
6th Revised Sheet 2
Replacing 5th Revised Sheet 2

(RT)

LOCAL EXCHANGE TARIFF

1.2. RATES (cont'd)

1.2.1 Within the Base Rate Area, As shown on The Related Exchange Area Map: (cont'd)

<u>Class of Service</u>	<u>Maximum Rates</u>
Urban Service	
Business	
Flat Rate -	
One-Party Line	\$24.71(CR)
Residence	
Flat Rate -	
One-Party Line	11.83(CR)
Lifeline(1)	8.57
Suburban Service	
Flat Rate -	
Business – 4-Party	19.68(CR)
Residence – 4-Party	8.94(CR)
Rural Service	
Flat Rate -	
Business – 4-Party	22.35(CR)
Residence – 4-Party	11.64(CR)

(1) See P.S.C. Mo. – No. 24, Local Exchange Tariff, Section 1.2.2.E, for description, terms and conditions related to Lifeline Service.

Issued: October 17, 2005

Effective: December 1, 2005

By CINDY BRINKLEY, President-SBC Missouri
Southwestern Bell Telephone, L.P., d/b/a SBC Missouri
St. Louis, Missouri

Cancelled

December 1, 2006

Missouri Public
Service Commission

Filed

Missouri Public
Service Commission

No Supplement to this tariff will be issued except for the purpose of canceling this tariff.

Missouri Portion-
Blytheville, Arkansas, Exchange
5th Revised Sheet 2
Replacing 4th Revised Sheet 2

SOUTHWESTERN BELL TELEPHONE COMPANY
LOCAL EXCHANGE TARIFF

1.2. RATES (cont'd)

1.2.1 Within the Base Rate Area, As shown on The Related Exchange Area Map: (cont'd)

<u>Class of Service</u>	<u>Maximum Rates</u>
Urban Service	
Business	
Flat Rate -	
One-Party Line	\$25.21(CR)
Residence	
Flat Rate -	
One-Party Line	12.07
Lifeline(1)	8.57
Suburban Service	
Flat Rate -	
Business - 4-Party	20.08
Residence - 4-Party	9.12
Rural Service	
Flat Rate -	
Business - 4-Party	22.79
Residence - 4-Party	11.87(CR)

CANCELLED

DEC 01 2005
By *67 RS 2*
Public Service Commission
MISSOURI

(1) See P.S.C. Mo. - No. 24, Local Exchange Tariff, Section 1.2.2.E, for description, terms and conditions related to Lifeline Service.

Issued: October 15, 2004

Effective: December 1, 2004

By CINDY BRINKLEY, President-SBC Missouri
Southwestern Bell Telephone, L.P., d/b/a SBC Missouri
St. Louis, Missouri

**FILED
MO PSC**

No Supplement to this tariff will be issued except for the purpose of canceling this tariff.

Missouri Portion-
Blytheville, Arkansas, Exchange
4th Revised Sheet 2
Replacing 3rd Revised Sheet 2
Missouri Public

SOUTHWESTERN BELL TELEPHONE COMPANY Service Commission
LOCAL EXCHANGE TARIFF

REC'D MAY 10 2004

1.2. RATES (cont'd)

1.2.1 Within the Base Rate Area, As shown on The Related Exchange Area Map: (cont'd)

(CT)	<u>Class of Service</u>	<u>Maximum Rates</u>
	Urban Service	
	Business	
	Flat Rate -	
	One-Party Line	\$25.90
	Residence	
	Flat Rate -	
	One-Party Line	12.40
(AT)	Lifeline(1)	8.90(NR)
	Suburban Service	
	Flat Rate -	
	Business - 4-Party	20.63
	Residence - 4-Party	9.37
	Rural Service	
	Flat Rate -	
	Business - 4-Party	23.42
	Residence - 4-Party	12.20

CANCELLED

DEC 01 2004
By *SMRS2*
Public Service Commission
MISSOURI

(RT)
(FC)(AT) (1) See P.S.C. Mo. - No. 24, Local Exchange Tariff, Section 1.2.2.E, for description, terms and conditions related to Lifeline Service.

Issued: May 10, 2004

Effective: June 9, 2004

By CINDY BRINKLEY, President-SBC Missouri
Southwestern Bell Telephone, L.P., d/b/a SBC Missouri
St. Louis, Missouri

Missouri Public
Service Commission

FILED JUN 09 2004

No Supplement to this tariff will be issued except for the purpose of canceling this tariff.

Missouri Portion-
Blytheville, Arkansas, Exchange
3rd Revised Sheet 2
Replacing 2nd Revised Sheet 2
MISSOURI Public

SOUTHWESTERN BELL TELEPHONE COMPANY
LOCAL EXCHANGE TARIFF

REC'D OCT 15 2003

1.2. RATES (cont'd)

1.2.1 Within the Base Rate Area, As shown on The Related Exchange Area Map: (cont'd)

Service Commission

<u>Class of Service</u>	<u>Current Monthly Rates(1)</u>
Urban Service	
Business	
Flat Rate -	
One-Party Line	\$25.90(CR)
Residence	
Flat Rate -	
One-Party Line	12.40(CR)
Suburban Service	
Flat Rate -	
Business - 4-Party	20.63(CR)
Residence - 4-Party	9.37
Rural Service	
Flat Rate -	
Business - 4-Party	23.42(CR)
Residence - 4-Party	12.20(CR)

CANCELLED

JUN 09 2004
by *YMB*
Public Service Commission
MISSOURI

(AT) (1) See Sheet 2 for maximum allowable rates.

Issued: October 15, 2003

Effective: December 1, 2003

By CINDY BRINKLEY, President-SBC Missouri
Southwestern Bell Telephone, L.P., d/b/a SBC Missouri
St. Louis, Missouri

Missouri Public
Service Commission

FILED DEC 01 2003

No Supplement to this tariff will be issued except for the purpose of canceling this tariff.

Missouri Portion-
Blytheville, Arkansas, Exchange
2nd Revised Sheet 2
Replacing 1st Revised Sheet 2

SOUTHWESTERN BELL TELEPHONE COMPANY
LOCAL EXCHANGE TARIFF

Missouri Public
Service Commission

1.2 RATES (cont'd)

REC'D OCT 15 2002

1.2.1 Within the Base Rate Area, As shown on The Related Exchange Area Map: (cont'd)

<u>Class of Service</u>	<u>Current Monthly Rates(1)</u>
Urban Service	
Business	
Flat Rate -	
One-Party Line	\$25.91(CR)
Residence	
Flat Rate -	
One-Party Line	12.41(CR)
Suburban Service	
Flat Rate -	
Business - 4-Party	20.64(CR)
Residence - 4-Party	9.37(CR)
Rural Service	
Flat Rate -	
Business - 4-Party	23.43(CR)
Residence - 4-Party	12.21(CR)

CANCELLED

DEC 01 2003
3rd RS 2
Missouri Public Service Commission
MISSOURI

Missouri Public
Service Commission

FILED DEC 01 2002

Issued: October 15, 2002

Effective: December 1, 2002

By CINDY BRINKLEY, President-Missouri
Southwestern Bell Telephone, L.P., d/b/a Southwestern Bell Telephone Company
St. Louis, Missouri

No supplement to this tariff will be issued except for the purpose of canceling this tariff.

MISSOURI PORTION- BLYTHEVILLE,
ARKANSAS, EXCHANGE
1st Revised Sheet 2
Replacing Original Sheet 2

Missouri Public

SOUTHWESTERN BELL TELEPHONE COMPANY
LOCAL EXCHANGE TARIFF

REC'D OCT 01 2001

1.2 RATES-(Continued)

Service Commission

Class of Service

Maximum Monthly Rates

Urban Service

Business

Flat Rate -

One-Party Line

\$25.68 (CR)

Residence

Flat Rate -

One-Party Line

12.30 (CR)

(RT)

Suburban Service

Flat Rate -

Business - 4-Party

20.46 (CR)

Residence - 4-Party

9.29 (CR)

Rural Service

Flat Rate -

Business - 4-Party

23.22 (CR)

Residence - 4-Party

12.10 (CR)

CANCELLED

DEC 01 2002

2nd RSZ
Missouri Service Commission
MISSOURI

Issued: October 1, 2001

Effective: December 1, 2001

By JAN NEWTON, President-Missouri
Southwestern Bell Telephone Company
St. Louis, Missouri

Missouri Public

FILED DEC 01 2001

Service Commission

No supplement to this tariff will be issued except for the purpose of canceling this tariff.

MISSOURI PORTION- BLYTHEVILLE, ARKANSAS, EXCHANGE
Original Sheet 2

SOUTHWESTERN BELL TELEPHONE COMPANY
LOCAL EXCHANGE TARIFF

Missouri Public Service Commission

REC'D OCT 02 2000

1.2 RATES-(Continued)

<u>Class of Service</u>	<u>Maximum Monthly Rates</u>
Urban Service	
Business	
Flat Rate -	
One-Party Line	\$25.87
Residence	
Flat Rate -	
One-Party Line	12.39
Two-Party Line	9.91
Suburban Service	
Flat Rate -	
Business - 4-Party	20.61
Residence - 4-Party	9.36
Rural Service	
Flat Rate -	
Business - 4-Party	23.40
Residence - 4-Party	12.19

CANCELLED

DEC 01 2000

19252
Public Service Commission
MISSOURI

Missouri Public Service Commission

FILED DEC 01 2000

Issued: October 2, 2000

Effective: December 1, 2000

By JAN NEWTON, President-Missouri
Southwestern Bell Telephone Company
St. Louis, Missouri

NO SUPPLEMENT TO THIS TARIFF WILL BE ISSUED EXCEPT FOR THE PURPOSE OF CANCELING THIS TARIFF.

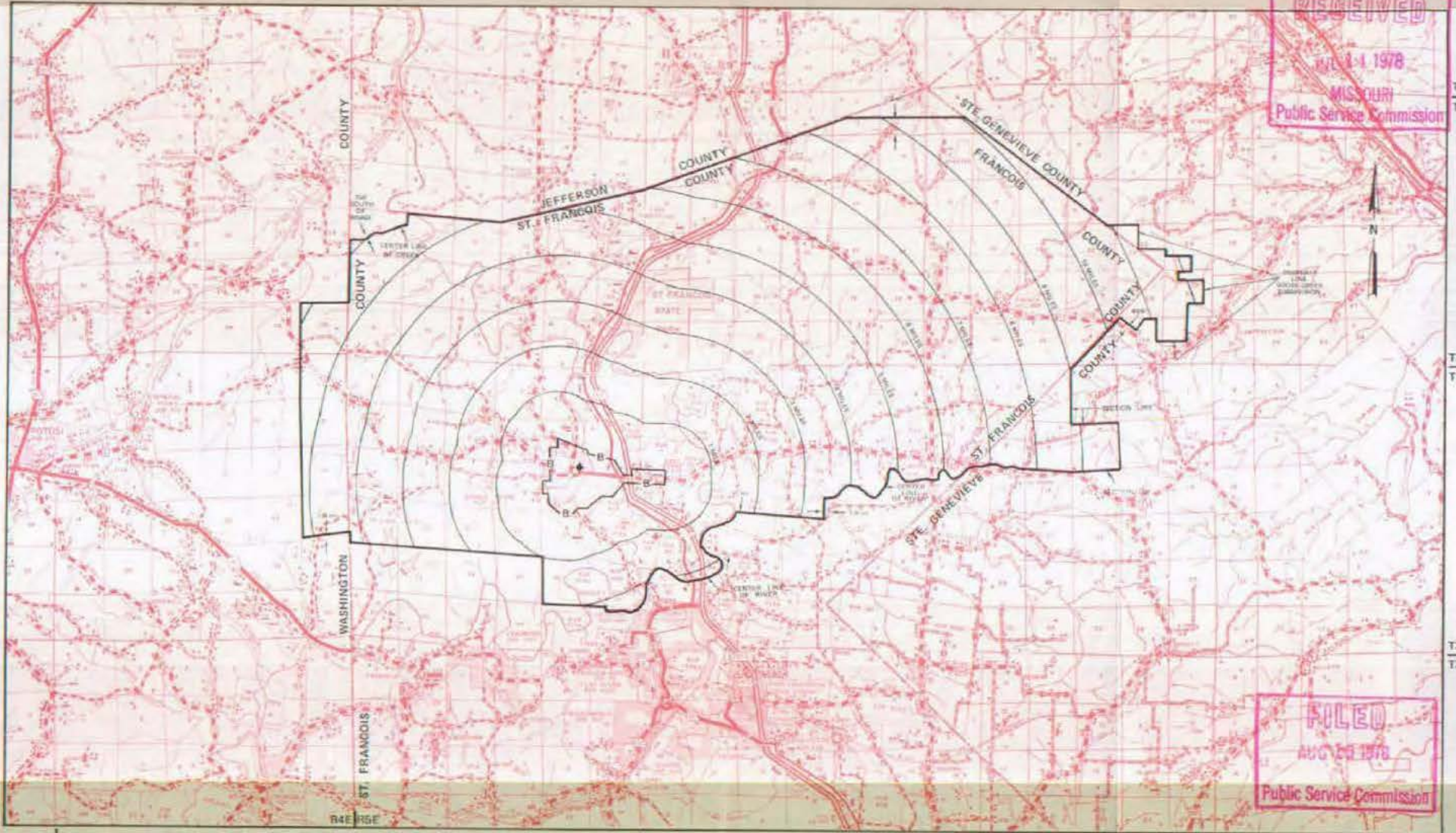
CANCELLED
April 13, 2012
Missouri Public
Service Commission
JI-2012-0438

P. S. C. Mo. No. 17
EXCHANGE AREA MAP

Bonne Terre, Missouri

8th REVISED SHEET 3
REPLACING 7th REVISED SHEET 3

RECEIVED
JUL 14 1978
MISSOURI
Public Service Commission



FILED
AUG 15 1978
Public Service Commission

By R. R. SHOCKLEY, Vice President, Missouri
Southwestern Bell Telephone
St. Louis, Missouri

Issued: JULY 14, 1978

Effective: AUGUST 15, 1978